

An Overview of IPUMS NHGIS

Geographic U.S. Census Data from 1790 to 2020

Jonathan Schroeder

[@j_p_schroeder](#)

IPUMS Webinar Series – May 19, 2022

Webinar plan

- What Is IPUMS NHGIS?
- Data Finder Demo
 - Walkthrough: Find, Select, Download
 - Ways to Explore
- Key Resources
 - Summary Tables; GIS Files; Time Series & Crosswalks
 - API & ipumsr
 - User Support
- Q&A



NHGIS GEOMARKER NATIONAL HISTORICAL GIS

HOME | SELECT DATA | MY DATA | SUPPORT



IPUMS NHGIS

- ABOUT
- REGISTER
- DONATE TO NHGIS

DATA

- BROWSE AND SELECT DATA
- DOWNLOAD OR REVISE MY DATA
- API

SUPPLEMENTAL DATA

- GEOGRAPHIC CROSSWALKS
- ENVIRONMENTAL SUMMARIES
- PRIVACY-PROTECTED DEMO DATA
- SABINS SCHOOL AREAS

DOCUMENTATION

- DATA AVAILABILITY
- OVERVIEW OF DATASETS
- TABULAR DATA SOURCES
- TIME SERIES TABLES
- GIS FILES
- REVISION HISTORY

SUPPORT

- FAQ

USER GUIDE

- MAPPING OPTIONS

- USER FORUM

USER GUIDE

WEBINARS

- [Intro to IPUMS NHGIS: Geographic U.S. Census Data from 1790 to the Present](#) - November 9, 2018
- [NHGIS Time Series Tables: Geographic Census Data Harmonized Across Time](#) - November 20, 2019

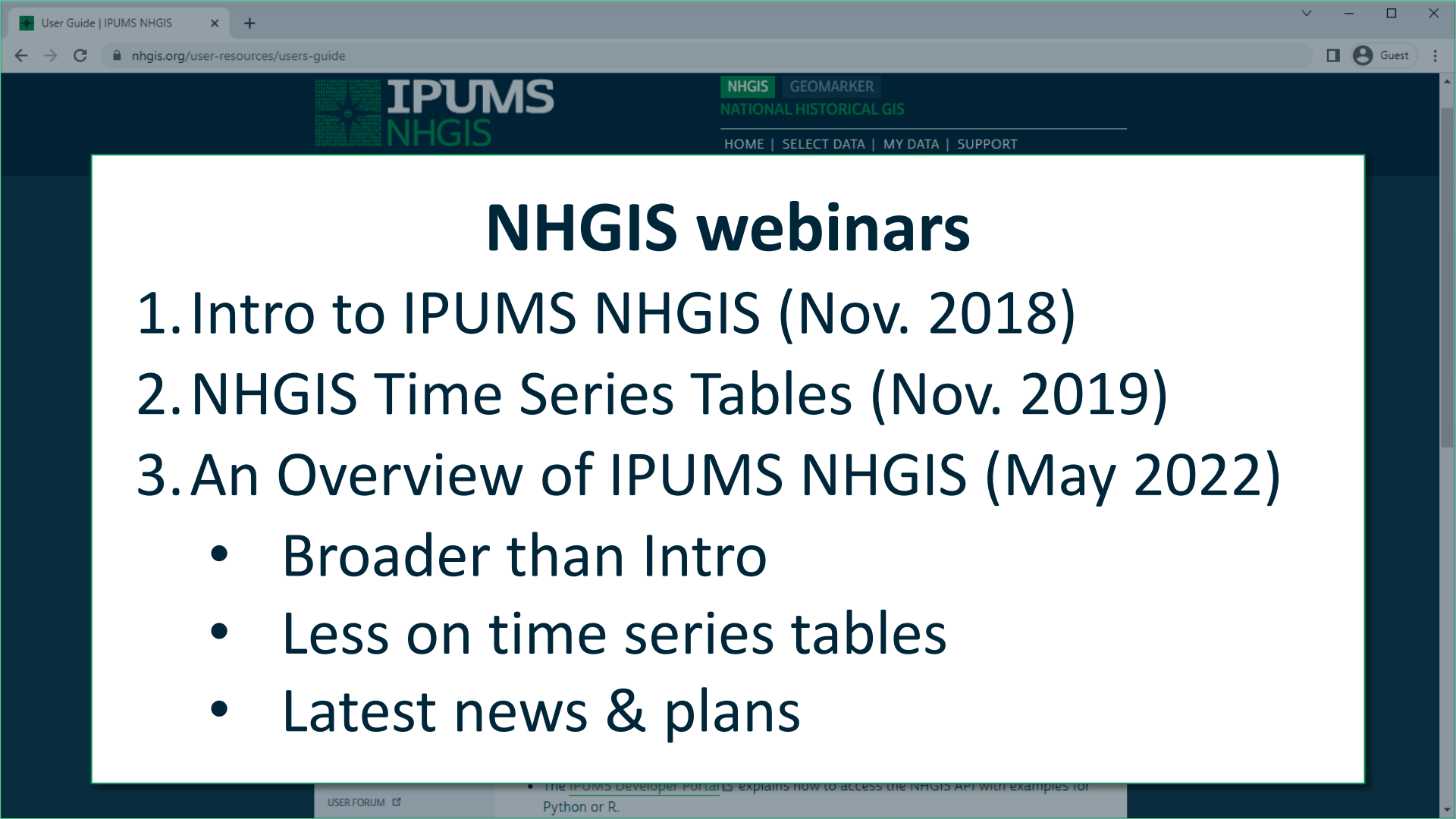
VIDEO TUTORIALS

- [NHGIS Data Finder](#) (general overview)
- [NHGIS Filter Options](#)
- [NHGIS Data Layout Options](#)
- [Join NHGIS Spatial and Census Data](#)

MAPPING OPTIONS

FOR DEVELOPERS & R USERS

- The [ipumsr package](#) facilitates using IPUMS data, including NHGIS data, in R.
- The [IPUMS Developer Portal](#) explains how to access the NHGIS API with examples for Python or R.



NHGIS webinars

1. Intro to IPUMS NHGIS (Nov. 2018)
2. NHGIS Time Series Tables (Nov. 2019)
3. An Overview of IPUMS NHGIS (May 2022)
 - Broader than Intro
 - Less on time series tables
 - Latest news & plans

IPUMS

ABOUT | PROJECTS | SUPPORT | IMPACT | BLOG

IPUMS provides census and survey data from around the world integrated across time and space. IPUMS integration and documentation makes it easy to study change, conduct comparative research, merge information across data types, and analyze individuals within family and community contexts. Data and services available free of charge.



U.S. Census and American Community Survey microdata from 1850 to the present. [Learn More](#)

VISIT SITE



Current Population Survey microdata including basic monthly surveys and supplements from 1962 to the present. [Learn More](#)

VISIT SITE



World's largest collection of census microdata covering over 100 countries, contemporary and historical. [Learn More](#)

VISIT SITE

2022 DATA-INTENSIVE RESEARCH CONFERENCE

July 20-21
Contextualizing Work and Health across the Life Course

REGISTER



Health survey data for Africa and Asia, including harmonized data collections for DHS and PMA. [Learn More](#)

VISIT SITE



Tabular U.S. Census data and GIS boundary files from 1790 to the present. [Learn More](#)

VISIT SITE



Tabular and GIS data from population, housing, and agricultural censuses around the world. [Learn More](#)
Find additional spatial population & environmental data in [IPUMS Terra](#).

VISIT SITE

CENSUS BUREAU PLANS MAJOR CHANGES TO PUBLIC DATA

New data may be unusable for research and planning

LEARN MORE

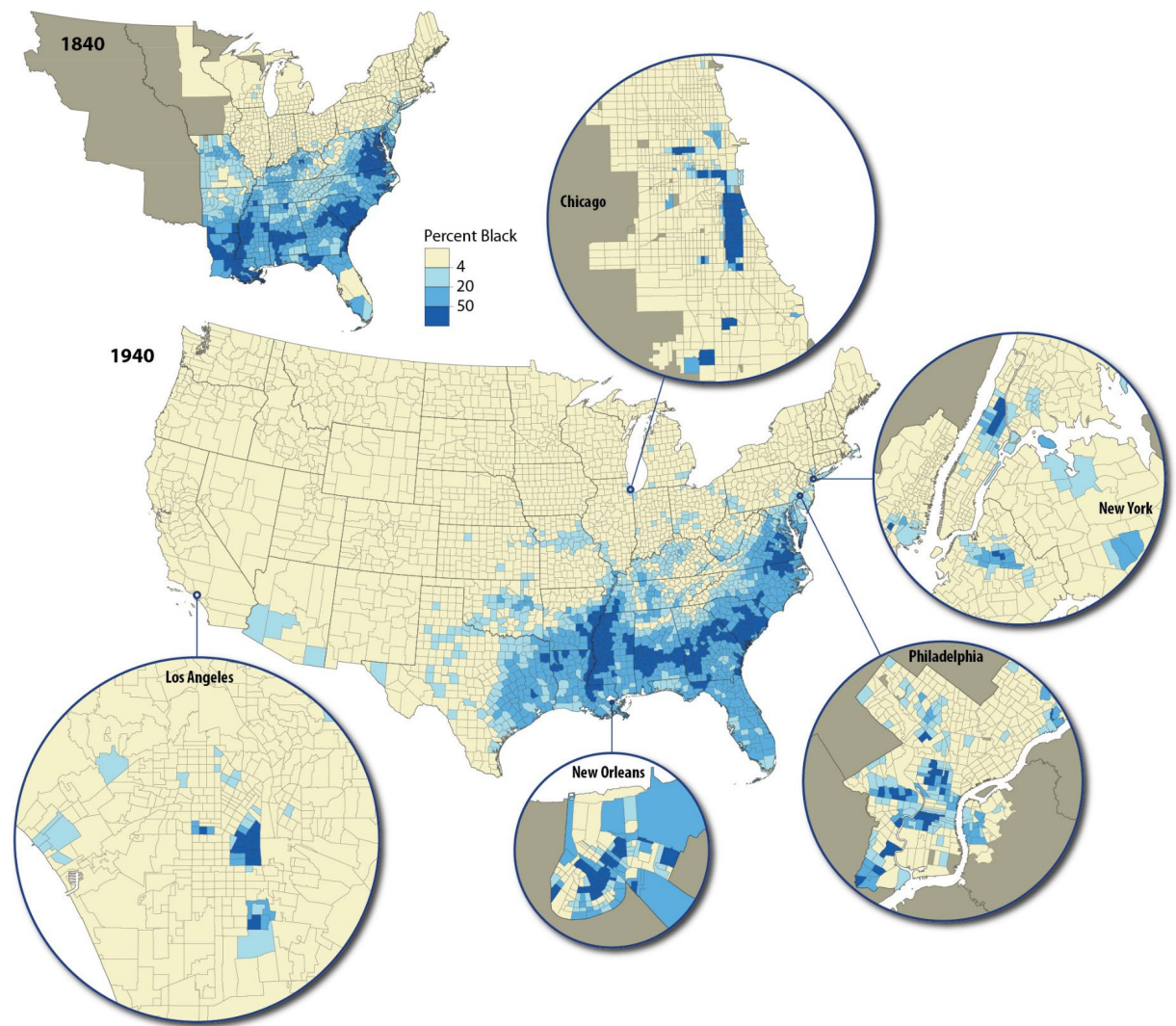


CALENDAR

Webinar: [Did The COVID-19 Pandemic Impact Contraceptive Use? An Introduction To Longitudinal Analysis Using PMA Data](#)

NHGIS

- Geographic U.S. census & survey data
- Summary tables *and* GIS files
- 1790 to the present



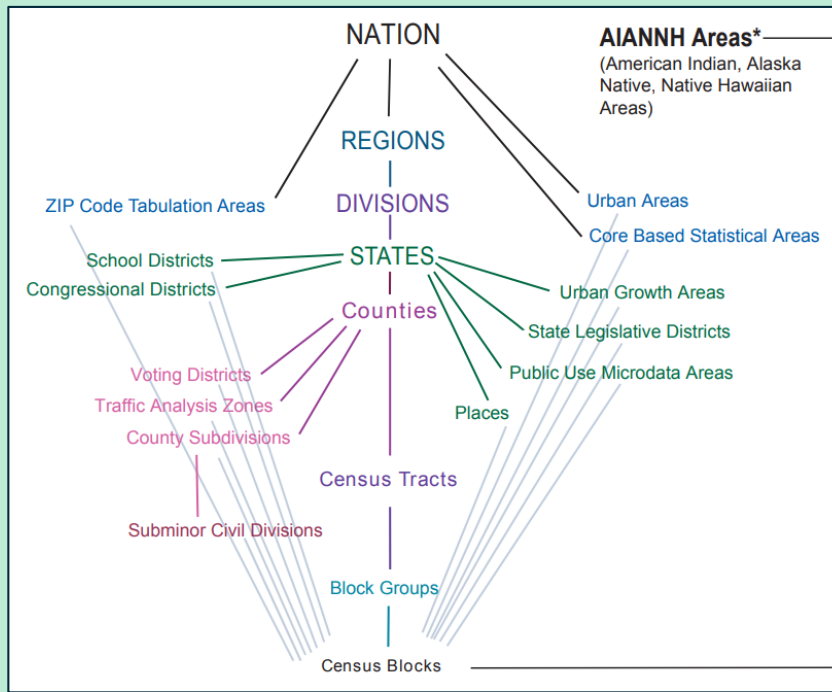
Observation units of census & survey data

Microdata: *Respondents*



- + Flexible classification, modeling & cross-tabulation
- Restricted geographic detail
- Limited sample sizes

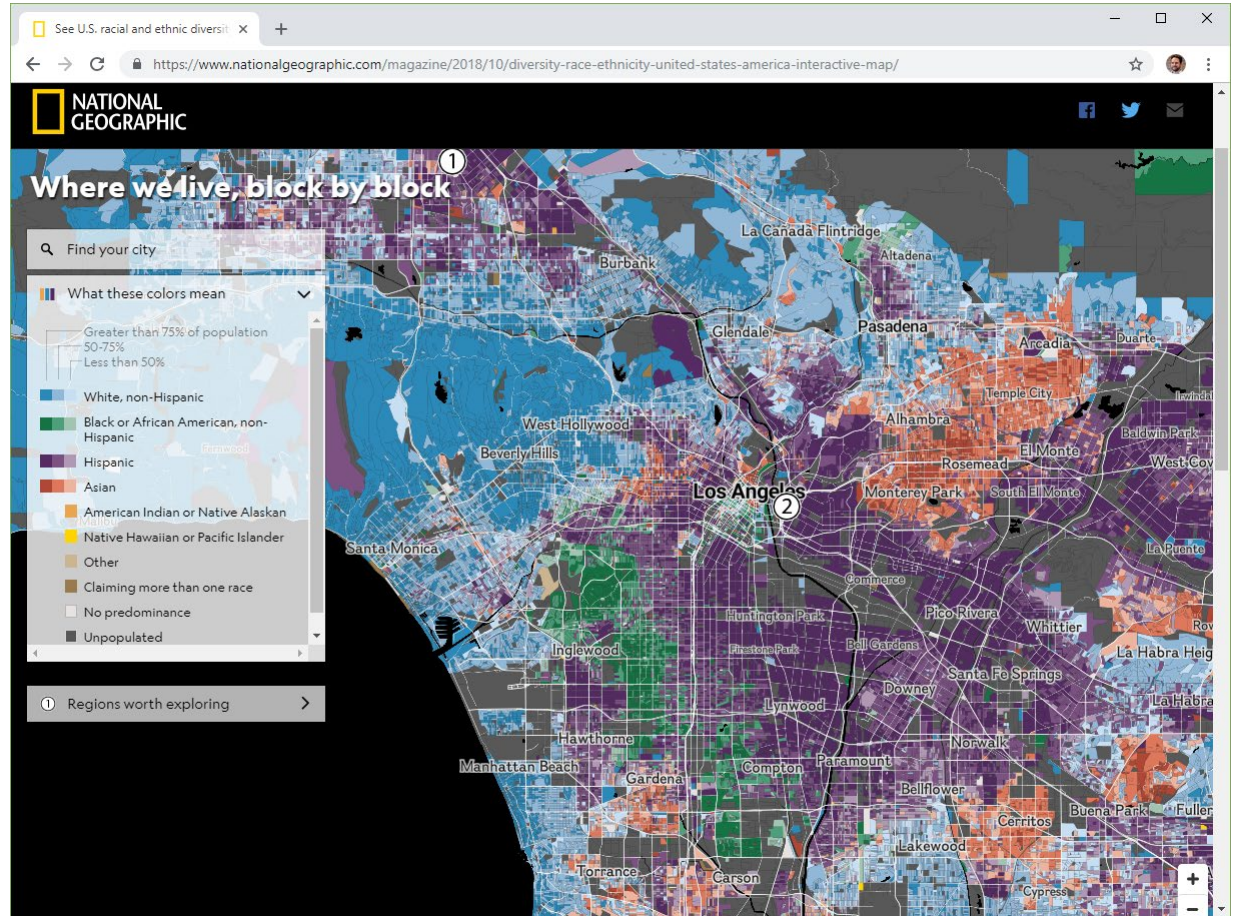
Summary data: *Areas*



<https://www.census.gov/geo/reference/hierarchy.html>

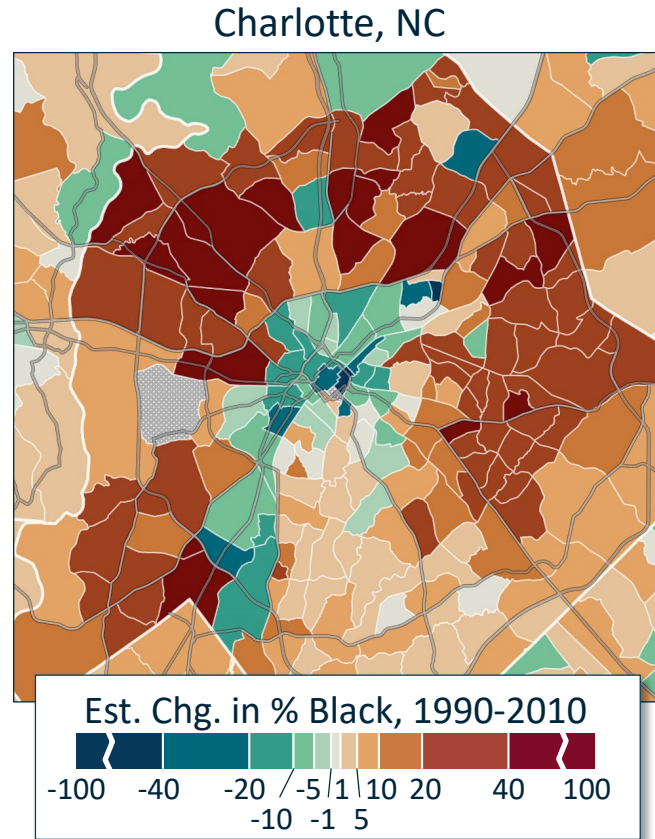
NHGIS

- All summary levels down to census blocks



NHGIS

- All summary levels down to census blocks
- Time series & geographic crosswalks
- A data source, not a mapping or analysis tool

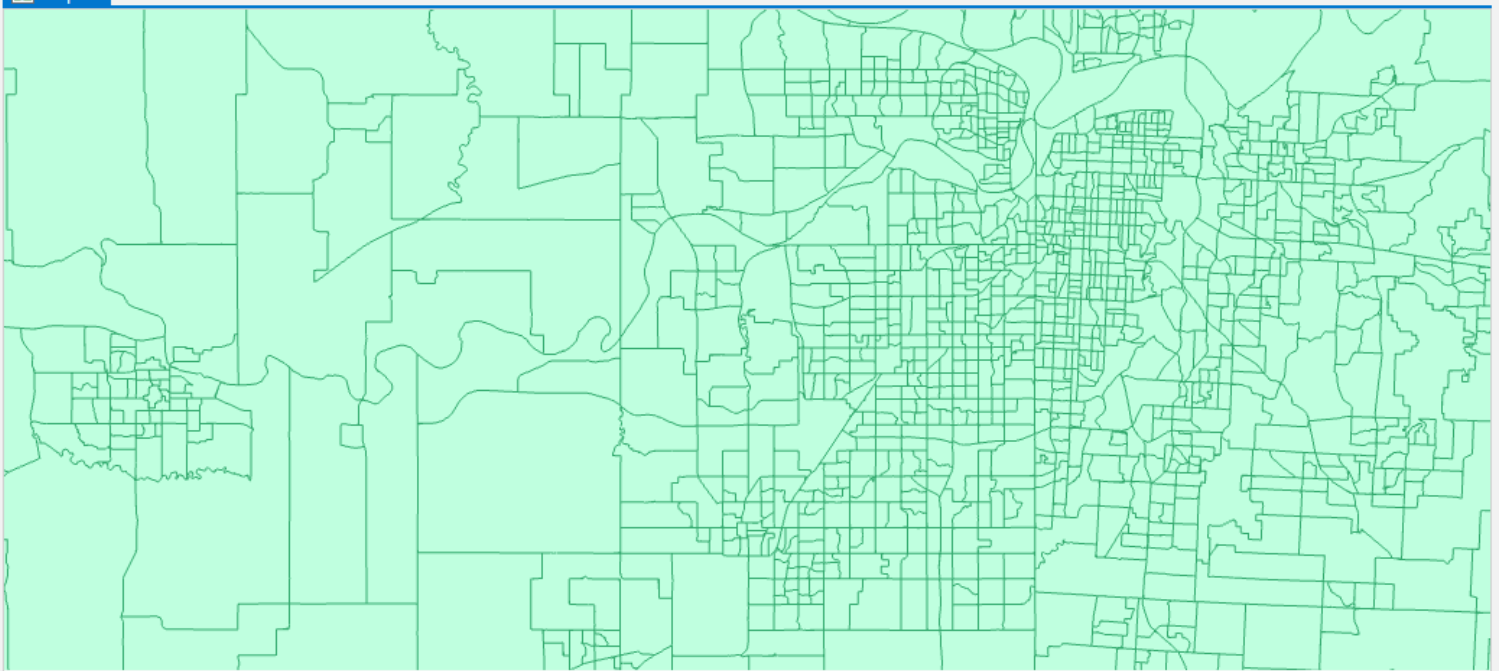


Contents

Search

Selection

- Map
 - US_blk_grp_2015
- Standalone Tables
 - nhgis0845_ds215_20155_blk_grp.csv



1:441,113 10,518,487.64W 4,667,167.48N m Selected Features: 0

nhgis0845_ds215_20155_blk_grp.csv

Field: Add Calculate Selection: Select By Attributes Zoom To Switch Clear Delete Copy

GISJOIN	YEAR	REGIONA	DIVISIONA	STATE	STATEA	COUNTY	COUNTYA
G20000109526001	2011-2015	<Null>	<Null>	Kansas	20	Allen County	
G20000109527001	2011-2015	<Null>	<Null>	Kansas	20	Allen County	

Educational Attainment in America

Kyle Walker, TCU Center for Urban Studies

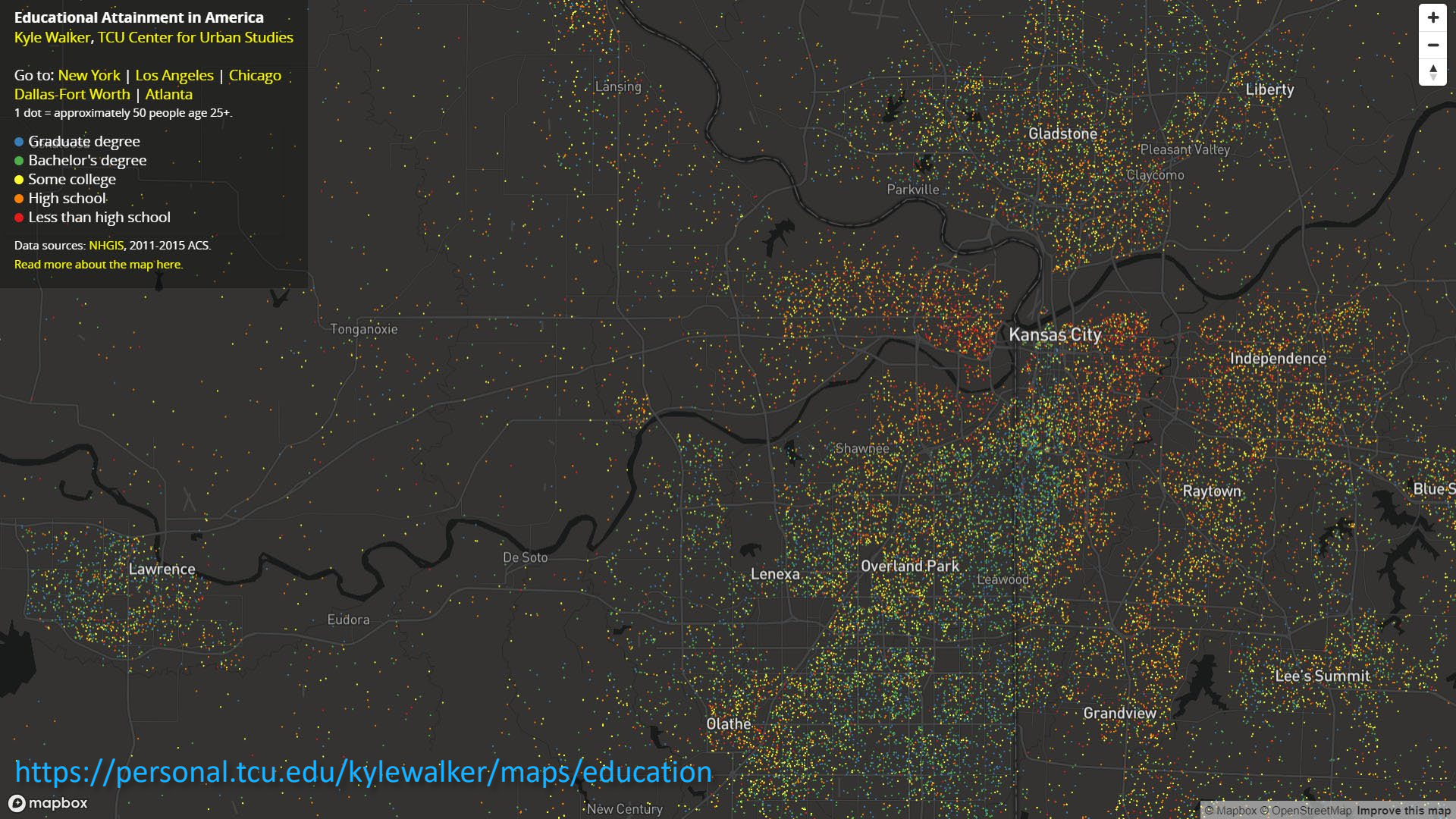
Go to: [New York](#) | [Los Angeles](#) | [Chicago](#)
[Dallas-Fort Worth](#) | [Atlanta](#)

1 dot = approximately 50 people age 25+.

- Graduate degree
- Bachelor's degree
- Some college
- High school
- Less than high school

Data sources: [NHGIS, 2011-2015 ACS](#).

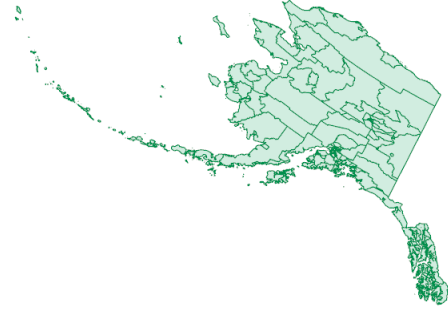
[Read more about the map here.](#)



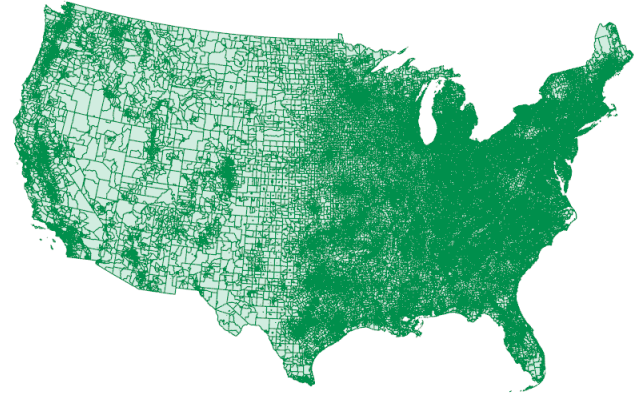
<https://personal.tcu.edu/kylewalker/maps/education>

NHGIS

- Nationwide extent for most levels
- Principally funded by NSF & NIH grants...
- **FREE**



2020 block group boundaries





NHGIS GEOMARKER
NATIONAL HISTORICAL GIS

HOME | SELECT DATA | MY DATA | SUPPORT



IPUMS NHGIS

ABOUT

REGISTER

DONATE TO NHGIS

DATA

BROWSE AND SELECT DATA

DOWNLOAD OR REVISE MY DATA

API

SUPPLEMENTAL DATA

GEOGRAPHIC CROSSWALKS

ENVIRONMENTAL SUMMARIES

PRIVACY-PROTECTED DEMO DATA

SABINS SCHOOL AREAS

DOCUMENTATION

DATA AVAILABILITY

OVERVIEW OF DATASETS

TABULAR DATA SOURCES

TIME SERIES TABLES

GIS FILES

REVISION HISTORY

DOWNLOAD U.S. CENSUS DATA TABLES & MAPPING FILES

The National Historical Geographic Information System (NHGIS) provides easy access to summary tables and time series of population, housing, agriculture, and economic data, along with GIS-compatible boundary files, for years from 1790 through the present and for all levels of U.S. census geography, including states, counties, tracts, and blocks. [Read more.](#)

START HERE: [Get Data](#)

WHAT IS IPUMS?

IPUMS provides census and survey data from around the world integrated across time and space. IPUMS integration and documentation makes it easy to study change, conduct comparative research, merge information across data types, and analyze individuals within family and community context. Data and services are available free of charge. [Learn more about IPUMS.](#)

NHGIS GEOMARKER
NATIONAL HISTORICAL GIS

HOME | SELECT DATA | MY DATA | SUPPORT

DATA CART

0 SOURCE TABLES
0 TIME SERIES TABLES
0 GIS FILES

SHOW SELECTIONS

CONTINUE

FILTER > OPTIONS > REVIEW

APPLY FILTERS ?

HOW TO USE THE DATA FINDER 

GEOGRAPHIC LEVELS

YEARS

TOPICS

DATASETS

No filters selected.



NHGIS GEOMARKER
NATIONAL HISTORICAL GIS

HOME | SELECT DATA | MY DATA | SUPPORT

DATA CART

0 SOURCE TABLES
0 TIME SERIES TABLES
0 GIS FILES

SHOW SELECTIONS

CONTINUE

FILTER > OPTIONS > REVIEW

APPLY FILTERS ?

HOW TO USE THE DATA FINDER

GEOGRAPHIC LEVELS

YEARS

TOPICS



INCLUDES ▾

Journey to Work

DATASETS

RESET FILTERS

SELECT DATA ?

2496 SOURCE TABLES

7 TIME SERIES TABLES

1166 GIS FILES

1 << PAGE 1 OF 125 >> 20 ▾

VIEW 1 - 20 OF 2,496

	POPULARITY	TABLE NAME	UNIVERSE	CLASSIFICATIONS	YEAR - DATASET	BREAKDOWNS
+		NT51. Working Persons 14 and Over by Means of Transportation to Work	Workers 14 Years and Over (includes Armed Forces)	Means of Transportation to Work (8)	1960_tPH	
+		NB37. Employed Population by Means of Transportation to Work (from printed report)	Employed Persons	Means of Transportation to Work (8)	1960_tPH	
+		NT36. Means of Transportation to Work	Workers	Means of Transportation to Work (9)	1970_Cnt4Pb	Race/Ethnicity , Spatial
+		NT0C. Location of Work	Locations of Workplace for Workers 16 Years and Over in Commuter Flow		1980_JTW	Work Location
+		NT001. Workers 16 Years of Age and Older in Commuter Flow	Workers 16 Years and Over in Commuter Flow		1980_JTW	Work Location



NHGIS GEOMARKER
NATIONAL HISTORICAL GIS

HOME | SELECT DATA | MY DATA | SUPPORT

DATA CART

0 SOURCE TABLES
0 TIME SERIES TABLES
0 GIS FILES

SHOW SELECTIONS

CONTINUE

FILTER > OPTIONS > REVIEW

APPLY FILTERS ?

HOW TO USE THE DATA FINDER

GEOGRAPHIC LEVELS

YEARS

TOPICS



INCLUDES

Journey to Work

DATASETS

RESET FILTERS

SELECT DATA ?

2496 SOURCE TABLES

7 TIME SERIES TABLES

1166 GIS FILES

← << PAGE 1 OF 1 >> > 20 ▾

VIEW 1 - 7 OF 7

	POPULARITY	SEQUENCE	TABLE NAME	GEOGRAPHIC INTEGRATION	YEARS	GEOGRAPHIC LEVELS
+		6500.01	CS4. Workers of Working Age* by Means of Transportation to Work [9]	Nominal	1970, 1980, 1990, 2000, 2008-2012	STATE , COUNTY , CTY_SUB , PLACE
+		6500.02	AC2. Workers 16 Years and Over by Means of Transportation to Work [18]	Nominal	1980, 1990, 2000, 2008-2012	STATE , COUNTY , CTY_SUB , PLACE
+		6500.03	CS3. Workers 16 Years and Over by Means of Transportation to Work [20]	Nominal	1990, 2000, 2008-2012	NATION , REGION , DIVISION , STATE , COUNTY , TRACT , CTY_SUB , PLACE
+		6500.04	CWO. Total Commuters (Workers 16 Years and Over Who Did Not Work at Home)	Nominal	1980, 1990, 2000, 2008-2012	NATION , REGION , DIVISION , STATE , COUNTY , TRACT , CTY_SUB , PLACE
+		6510.01	CS0. Commuters by Travel Time to Work [8]	Nominal	1980, 1990, 2000, 2008-2012	NATION , REGION , DIVISION , STATE , COUNTY , TRACT , CTY_SUB , PLACE
+		6510.02	CS1. Commuters by Travel Time to Work [12]	Nominal	1990, 2000, 2008-2012	NATION , REGION , DIVISION , STATE , COUNTY , TRACT , CTY_SUB , PLACE



NHGIS GEOMARKER
NATIONAL HISTORICAL GIS

HOME | SELECT DATA | MY DATA | SUPPORT

DATA CART

0 SOURCE TABLES
0 TIME SERIES TABLES
0 GIS FILES

SHOW SELECTIONS

CONTINUE

FILTER > OPTIONS > REVIEW

APPLY FILTERS ?

HOW TO USE THE DATA FINDER

GEOGRAPHIC LEVELS

YEARS

TOPICS



INCLUDES ▾

Journey to Work

DATASETS

RESET FILTERS

SELECT DATA ?

2496 SOURCE TABLES

7 TIME SERIES TABLES

1166 GIS FILES

PAGE 1 OF 59 20 ▾

VIEW 1 - 20 OF 1,166

	POPULARITY	YEAR ↕	GEOGRAPHIC LEVEL	EXTENT	BASIS
+		1960	Census Tract	United States	2000 TIGER/Line +
+		1960	Census Tract	United States	2008 TIGER/Line +
+		1970	State	United States	2000 TIGER/Line +
+		1970	County	United States	2000 TIGER/Line +
+		1970	County	United States	2008 TIGER/Line +
+		1970	Census Tract	United States	2000 TIGER/Line +
+		1970	Census Tract	United States	2008 TIGER/Line +
+		1970	Place (Points)	United States	GNIS, TIGER/Line & Census Maps

Educational Attainment in America

Kyle Walker, TCU Center for Urban Studies

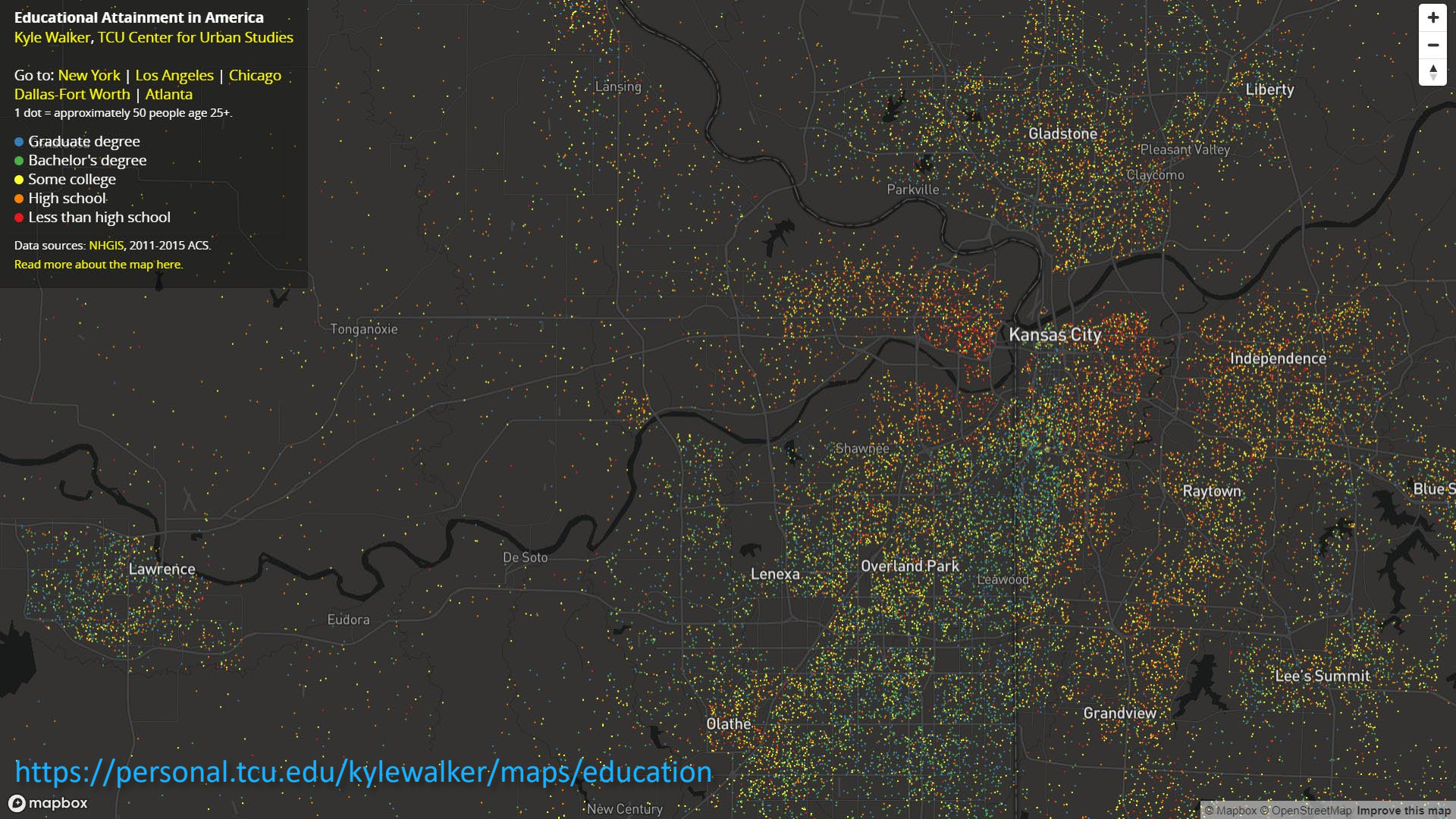
Go to: [New York](#) | [Los Angeles](#) | [Chicago](#)
[Dallas-Fort Worth](#) | [Atlanta](#)

1 dot = approximately 50 people age 25+.

- Graduate degree
- Bachelor's degree
- Some college
- High school
- Less than high school

Data sources: [NHGIS, 2011-2015 ACS](#).

[Read more about the map here.](#)



<https://personal.tcu.edu/kylewalker/maps/education>



NHGIS GEOMARKER NATIONAL HISTORICAL GIS

HOME | SELECT DATA | MY DATA | SUPPORT

DATA CART

- 0 SOURCE TABLES
- 0 TIME SERIES TABLES
- 0 GIS FILES

SHOW SELECTIONS CONTINUE

FILTER » OPTIONS » REVIEW

APPLY FILTERS ?

HOW TO USE THE DATA FINDER

- GEOGRAPHIC LEVELS** ✓ BLCK_GRP
- YEARS** ✓ 2011-2015
- TOPICS** ✓ INCLUDES Educational Attainment
- DATASETS**

RESET FILTERS

SELECT DATA ?

17 SOURCE TABLES | 0 TIME SERIES TABLES | 53 GIS FILES

PAGE 1 OF 1 100

VIEW 1 - 17 OF 17

	POPULARITY	TABLE NAME	UNIVERSE	CLASSIFICATIONS	YEAR - DATASET	BREAKDOWNS
+	<div style="width: 100%;"></div>	B14005 - Sex by School Enrollment by Educational Attainment by Employment Status for the Population 16 to 19 Years	Population 16 to 19 years	Educational Attainment (2), Labor Force, Employment and Armed Forces Status (3), School Enrollment (2), Sex (2)	2011_2015_ACS5a	Spatial
+	<div style="width: 100%;"></div>	B15002 - Sex by Educational Attainment for the Population 25 Years and Over	Population 25 years and over	Educational Attainment (16), Sex (2)	2011_2015_ACS5a	Spatial
+	<div style="width: 100%;"></div>	B15003 - Educational Attainment for the Population 25 Years and Over	Population 25 years and over	Educational Attainment (24)	2011_2015_ACS5a	Spatial



NHGIS GEOMARKER NATIONAL HISTORICAL GIS

HOME | SELECT DATA | MY DATA | SUPPORT

DATA CART

- 0 SOURCE TABLES
- 0 TIME SERIES TABLES
- 0 GIS FILES

SHOW SELECTIONS CONTINUE

FILTER » OPTIONS » REVIEW

APPLY FILTERS ?

HOW TO USE THE DATA FINDER

- GEOGRAPHIC LEVELS** ✓ BLCK_GRP
- YEARS** ✓ 2011-2015
- TOPICS** ✓ INCLUDES ▾ Educational Attainment
- DATASETS**

RESET FILTERS

SELECT DATA ?

17 SOURCE TABLES | 0 TIME SERIES TABLES | 53 GIS FILES

PAGE 1 OF 1 100 ▾

VIEW 1 - 17 OF 17

POPULARITY	TABLE NAME	UNIVERSE	CLASSIFICATIONS	YEAR - DATASET	BREAKDOWNS
	B14005 - Sex by School Enrollment by Educational Attainment by Employment Status for the Population 16 to 19 Years	Population 16 to 19 years	Educational Attainment (2), Labor Force, Employment and Armed Forces Status (3), School Enrollment (2), Sex (2)	2011_2015_ACS5a	Spatial
	B15002 - Sex by Educational Attainment for the Population 25 Years and Over	Population 25 years and over	Educational Attainment (16), Sex (2)	2011_2015_ACS5a	Spatial
	B15003 - Educational Attainment for the Population 25 Years and Over	Population 25 years and over	Educational Attainment (24)	2011_2015_ACS5a	Spatial

DATA CART

- 0 SOURCE TABLES
- 0 TIME SERIES TABLES
- 0 GIS FILES

SHOW SELECTIONS CONTINUE

FILTER » OPTIONS » REVIEW

APPLY FILTERS ?

HOW TO USE THE DATA FINDER

- GEOGRAPHIC LEVELS** ✓ BLCK_GRP
- YEARS** ✓ 2011-2015
- TOPICS** ✓ INCLUDES ▾ Educational Attainment
- DATASETS**

RESET FILTERS

SELECT DATA ?

17 SOURCE TABLES | 0 TIME SERIES TABLES | 53 GIS FILES

PAGE 1 OF 1 | 100 ▾

VIEW 1 - 17 OF 17

POPULARITY	TABLE NAME	UNIVERSE	CLASSIFICATIONS	YEAR - DATASET	BREAKDOWNS
+	B15003. Educational Attainment for the Population 25 Years and Over	Population 25 years and over	Educational Attainment (24)	2011_2015_ACS5a	Spatial
+	B15002. Sex by Educational Attainment for the Population 25 Years and Over	Population 25 years and over	Educational Attainment (16). Sex (2)	2011_2015_ACS5a	Spatial
+	C15010. Field of Bachelor's Degree for First Major for the Population 25 Years and Over	Population 25 years and over with a bachelor's degree or higher attainment	Field of Bachelor's Degree (5)	2011_2015_ACS5a	Spatial

DATA CART

- 0 SOURCE TABLES
- 0 TIME SERIES TABLES
- 0 GIS FILES

SHOW SELECTIONS CONTINUE

FILTER » OPTIONS » REVIEW

APPLY FILTERS ?

HOW TO USE THE DATA FINDER

- GEOGRAPHIC LEVELS** ✓ BLCK_GRP
- YEARS** ✓ 2011-2015
- TOPICS** ✓ INCLUDES ▾ Educational Attainment
- DATASETS**




RESET FILTERS

SELECT DATA ?

17 SOURCE TABLES | 0 TIME SERIES TABLES | 53 GIS FILES

PAGE 1 OF 1 | 100

VIEW 1 - 17 OF 17

POPULARITY	TABLE NAME	UNIVERSE	CLASSIFICATIONS	YEAR - DATASET	BREAKDOWNS
	B15003. Educational Attainment for the Population 25 Years and Over	Population 25 years and over	Educational Attainment (24)	2011_2015_ACS5a	Spatial
	B15002. Sex by Educational Attainment for the Population 25 Years and Over	Population 25 years and over	Educational Attainment (16). Sex (2)	2011_2015_ACS5a	Spatial
	C15010. Field of Bachelor's Degree for First Major for the Population 25 Years and Over	Population 25 years and over with a bachelor's degree or higher attainment	Field of Bachelor's Degree (5)	2011_2015_ACS5a	Spatial

FILTER » OPTIONS » REVIEW

APPLY FILTERS ?

HOW TO USE THE DATA FINDER

- GEOGRAPHIC LEVELS ✓ BLCK_GRP
- YEARS ✓ 2011-2015
- TOPICS ✓ INCLUDES ▾ Educational Attainment
- DATASETS

RESET FILTERS

SELECT DATA ?

17 SOURCE TABLES | 0 TIME SERIES TABLES | 53 GIS FILES

PAGE 1 OF 1 | 20

VIEW 1 - 17 OF 17

POPULARITY	TABLE NAME	UNIVERSE	CLASSIFICATIONS	YEAR - DATASET	BREAKDOWNS
<input checked="" type="checkbox"/>	B15003. Educational Attainment for the Population 25 Years and Over	Population 25 years and over	Educational Attainment (24)	2011_2015_ACS5a	Spatial
<input type="checkbox"/>	B15002. Sex by Educational Attainment for the Population 25 Years and Over	Population 25 years and over	Educational Attainment (16). Sex (2)	2011_2015_ACS5a	Spatial
<input type="checkbox"/>	C15010. Field of Bachelor's Degree for First Major for the Population 25 Years and Over	Population 25 years and over with a bachelor's degree or higher attainment	Field of Bachelor's Degree (5)	2011_2015_ACS5a	Spatial



NHGIS GEOMARKER NATIONAL HISTORICAL GIS

HOME | SELECT DATA | MY DATA | SUPPORT

DATA CART CLEAR X

1 SOURCE TABLE
0 TIME SERIES TABLES
0 GIS FILES

[SHOW SELECTIONS](#) [CONTINUE](#)

FILTER » OPTIONS » REVIEW

APPLY FILTERS ?

HOW TO USE THE DATA FINDER

GEOGRAPHIC LEVELS ✓ BLCK_GRP

YEARS ✓ 2011-2015

TOPICS ✓ **INCLUDES** ▾ Educational Attainment

DATASETS

[RESET FILTERS](#)

SELECT DATA ?

17 SOURCE TABLES | 0 TIME SERIES TABLES | **53 GIS FILES**

PAGE 1 OF 1 100 ▾

VIEW 1 - 53 OF 53

	POPULARITY	YEAR	GEOGRAPHIC LEVEL	EXTENT	BASIS
		2015	Block Group	United States	2015 TIGER/Line +
		2015	Block Group	Alabama	2015 TIGER/Line +
		2015	Block Group	Alaska	2015 TIGER/Line +
		2015	Block Group	Arizona	2015 TIGER/Line +
		2015	Block Group	Arkansas	2015 TIGER/Line +



NHGIS GEOMARKER NATIONAL HISTORICAL GIS

HOME | SELECT DATA | MY DATA | SUPPORT

DATA CART CLEAR X

- 1 SOURCE TABLE
- 0 TIME SERIES TABLES
- 1 GIS FILE

[SHOW SELECTIONS](#) **CONTINUE**

FILTER > OPTIONS > REVIEW

APPLY FILTERS ?

HOW TO USE THE DATA FINDER

GEOGRAPHIC LEVELS ✓ BLCK_GRP

YEARS ✓ 2011-2015

TOPICS ✓ **INCLUDES** ▼ Educational Attainment

DATASETS

[RESET FILTERS](#)

SELECT DATA ?

17 SOURCE TABLES | 0 TIME SERIES TABLES | 53 GIS FILES

PAGE 1 OF 1 100 ▼

VIEW 1 - 53 OF 53

	POPULARITY	YEAR	GEOGRAPHIC LEVEL	EXTENT	BASIS
<input checked="" type="checkbox"/>		2015	Block Group	United States	2015 TIGER/Line +
<input type="checkbox"/>		2015	Block Group	Alabama	2015 TIGER/Line +
<input type="checkbox"/>		2015	Block Group	Alaska	2015 TIGER/Line +
<input type="checkbox"/>		2015	Block Group	Arizona	2015 TIGER/Line +
<input type="checkbox"/>		2015	Block Group	Arkansas	2015 TIGER/Line +



NHGIS GEOMARKER NATIONAL HISTORICAL GIS

HOME | SELECT DATA | MY DATA | SUPPORT

DATA CART CLEAR X

- 1 SOURCE TABLE
- 0 TIME SERIES TABLES
- 1 GIS FILE

[SHOW SELECTIONS](#) [CONTINUE](#)

FILTER > OPTIONS > REVIEW

DATA OPTIONS ?

SOURCE TABLES

SELECT GEOGRAPHIC LEVELS

DATASET	SELECTIONS			
	TABLES	GEOGRAPHIC LEVELS	BREAKDOWNS	YEARS
2015 American Community Survey: 5-Year Data [2011-2015, Block Groups & Larger Areas]	1 table	1 of 87	Spatial: 1 of 19	1 of 1

GIS FILES

YEAR	GEOGRAPHIC LEVEL	EXTENT	BASIS
<input checked="" type="checkbox"/> 2015	Block Group	United States	2015 TIGER/Line +

REVIEW AND SUBMIT ?

TABLE FILE STRUCTURE ?

- Comma delimited (best for GIS)
 - Include additional descriptive header row (best for spreadsheets)
- Fixed width (best for statistical packages)

SOURCE TABLES

1 source table

GEOGRAPHIC EXTENTS (0 OF 52 SELECTED) No geographic extent selected

BREAKDOWN/DATA TYPE LAYOUT ?

- Combine different breakdowns/data types into a single data file
- Separate different breakdowns/data types into distinct data files

TIME SERIES TABLES

None selected

GIS FILES

1 GIS file

GEOGRAPHIC EXTENT OF BLOCK AND/OR BLOCK GROUP TABLES

All

Due to the large number of U.S. blocks, please select "All" for a block-level extract only if you need data from every state.

- Alabama (010)
- Alaska (020)
- Arizona (040)
- Arkansas (050)
- California (060)
- Colorado (080)
- Connecticut (090)
- Delaware (100)
- District Of Columbia (110)
- Florida (120)
- Georgia (130)
- Hawaii (150)
- Idaho (160)
- Illinois (170)
- Indiana (180)
- Iowa (190)
- Kansas (200)
- Kentucky (210)
- Louisiana (220)
- Maine (230)
- Maryland (240)
- Massachusetts (250)
- Michigan (260)
- Minnesota (270)
- Mississippi (280)

CANCEL SUBMIT

GEOGRAPHIC EXTENT OF BLOCK AND/OR BLOCK GROUP TABLES

All

Due to the large number of U.S. blocks, please select "All" for a block-level extract only if you need data from every state.

- Alabama (010)
- Alaska (020)
- Arizona (040)
- Arkansas (050)
- California (060)
- Colorado (080)
- Connecticut (090)
- Delaware (100)
- District Of Columbia (110)
- Florida (120)
- Georgia (130)
- Hawaii (150)
- Idaho (160)
- Illinois (170)
- Indiana (180)
- Iowa (190)
- Kansas (200)
- Kentucky (210)
- Louisiana (220)
- Maine (230)
- Maryland (240)
- Massachusetts (250)
- Michigan (260)
- Minnesota (270)
- Mississippi (280)

CANCEL **SUBMIT**

REVIEW AND SUBMIT ?

TABLE FILE STRUCTURE ?

- Comma delimited (best for GIS)
- Include additional descriptive header row (best for spreadsheets)
- Fixed width (best for statistical packages)

SOURCE TABLES

1 source table

GEOGRAPHIC EXTENTS (52 OF 52 SELECTED)

BREAKDOWN/DATA TYPE LAYOUT ?

- Combine different breakdowns/data types into a single data file
- Separate different breakdowns/data types into distinct data files

TIME SERIES TABLES

None selected

GIS FILES

1 GIS file

DESCRIPTION ?

SUBMIT

REVIEW AND SUBMIT ?

TABLE FILE STRUCTURE ?

- Comma delimited (best for GIS)
 - Include additional descriptive header row (best for spreadsheets)
- Fixed width (best for statistical packages)

SOURCE TABLES

1 source table

GEOGRAPHIC EXTENTS (52 OF 52 SELECTED)

BREAKDOWN/DATA TYPE LAYOUT ?

- Combine different breakdowns/data types into a single data file
- Separate different breakdowns/data types into distinct data files

TIME SERIES TABLES

None selected

GIS FILES

1 GIS file

DESCRIPTION ?

2011-2015 educational attainment for block groups

SUBMIT

IPUMS



LOG IN TO IPUMS NHGIS

EMAIL ADDRESS

PASSWORD

[IPUMS](#) uses a **common user management system** for several data projects: IPUMS International, IPUMS USA, IPUMS CPS, IPUMS Higher Ed, NHGIS, IPUMS Health Surveys, IPUMS Time Use, and IPUMS Terra.

If you already have an account with any of these projects, sign in here. If you've not yet registered for IPUMS NHGIS, you will be directed to the project registration page after signing in.

If you do not have an account for any IPUMS project, you may create one [here](#).

HELP

> [Forgot your password?](#)

> [Create an account](#) — *only for users who do not have an IPUMS account*

EXTRACTS HISTORY ?

NHGIS will send you an email when your data extract is ready to download. It may take a few minutes. Large requests may take longer.

EXTRACT #	DATE CREATED	STATUS ?	DOWNLOAD DATA	REVISE EXTRACT	DESCRIPTION (CLICK TO EDIT)
892	2022-May-18	🔄 STARTED		REVISE	2011-2015 educational attainment for block groups
891	2022-May-18	✅ COMPLETED	TABLES ↓ 4.44 KB	REVISE	20195 total pop, sample pop
890	2022-May-13	✅ COMPLETED	TABLES ↓ 34.7 MB	REVISE	20195 and 2020 totpop & hisp, tracts & BGs
889	2022-May-03	🕒 EXPIRED	RESUBMIT	REVISE	20205 WI BG
888	2022-Apr-28	🕒 EXPIRED	RESUBMIT	REVISE	20205 test 5
887	2022-Apr-28	🕒 EXPIRED	RESUBMIT	REVISE	20155 test
886	2022-Apr-28	🕒 EXPIRED	RESUBMIT	REVISE	20205 test 4
885	2022-Apr-28	🕒 EXPIRED	RESUBMIT	REVISE	Retry 879: 2 20205 tables for states

EXTRACTS HISTORY ?

NHGIS will send you an email when your data extract is ready to download. It may take a few minutes. Large requests may take longer.

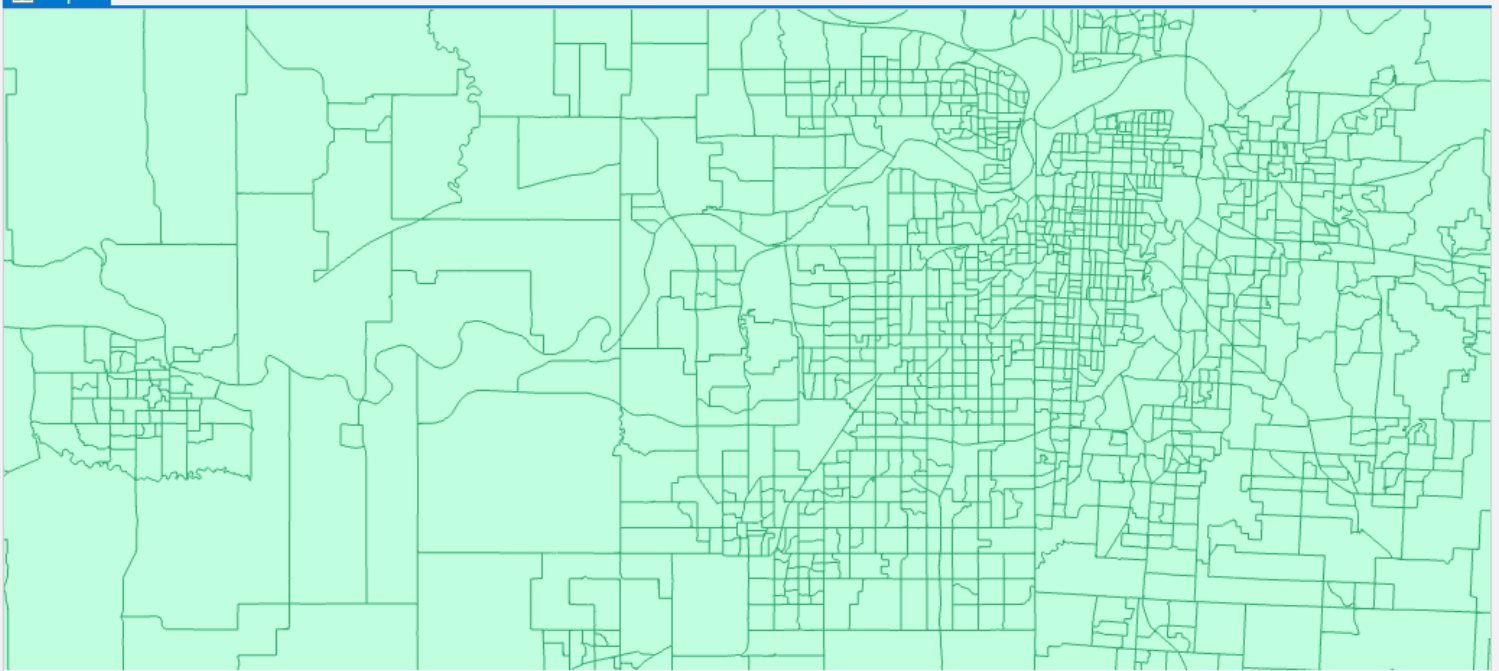
EXTRACT #	DATE CREATED	STATUS ?	DOWNLOAD DATA	REVISE EXTRACT	DESCRIPTION (CLICK TO EDIT)
892	2022-May-18	✓ COMPLETED	<div style="border: 2px dashed red; padding: 5px; display: inline-block;"> TABLES ↓ 12.8 MB GIS FILES ↓ 650 MB </div>	REVISE	2011-2015 educational attainment for block groups
891	2022-May-18	✓ COMPLETED	TABLES ↓ 4.44 KB	REVISE	20195 total pop, sample pop
890	2022-May-13	✓ COMPLETED	TABLES ↓ 34.7 MB	REVISE	20195 and 2020 totpop & hisp, tracts & BGs
889	2022-May-03	🕒 EXPIRED	RESUBMIT	REVISE	20205 WI BG
888	2022-Apr-28	🕒 EXPIRED	RESUBMIT	REVISE	20205 test 5
887	2022-Apr-28	🕒 EXPIRED	RESUBMIT	REVISE	20155 test
886	2022-Apr-28	🕒 EXPIRED	RESUBMIT	REVISE	20205 test 4
885	2022-Apr-28	🕒 EXPIRED	RESUBMIT	REVISE	Retrv 879: 2 20205 tables for states

Contents

Search

Selection

- Map
 - US_blk_grp_2015
- Standalone Tables
 - nhgis0845_ds215_20155_blk_grp.csv



1:441,113 10,518,487.64W 4,667,167.48N m Selected Features: 0

nhgis0845_ds215_20155_blk_grp.csv

Field: Add Calculate Selection: Select By Attributes Zoom To Switch Clear Delete Copy

GISJOIN	YEAR	REGIONA	DIVISIONA	STATE	STATEA	COUNTY	COUNTYA
G20000109526001	2011-2015	<Null>	<Null>	Kansas	20	Allen County	
G20000109527001	2011-2015	<Null>	<Null>	Kansas	20	Allen County	



NHGIS GEOMARKER NATIONAL HISTORICAL GIS

HOME | SELECT DATA | MY DATA | SUPPORT

DATA CART

- 0 SOURCE TABLES
- 0 TIME SERIES TABLES
- 0 GIS FILES

SHOW SELECTIONS CONTINUE

FILTER » OPTIONS » REVIEW

APPLY FILTERS ?

HOW TO USE THE DATA FINDER

GEOGRAPHIC LEVELS ✓ BLCK_GRP

YEARS ✓ 2011-2015

TOPICS ✓ INCLUDES ▾ Educational Attainment

DATASETS

RESET FILTERS

SELECT DATA ?

17 SOURCE TABLES | 0 TIME SERIES TABLES | 53 GIS FILES

PAGE 1 OF 1 100 VIEW 1 - 17 OF 17

	POPULARITY	TABLE NAME	UNIVERSE	CLASSIFICATIONS	YEAR - DATASET	BREAKDOWNS
+		B14005 - Sex by School Enrollment by Educational Attainment by Employment Status for the Population 16 to 19 Years	Population 16 to 19 years	Educational Attainment (2), Labor Force, Employment and Armed Forces Status (3), School Enrollment (2), Sex (2)	2011_2015_ACS5a	Spatial
+		B15002 - Sex by Educational Attainment for the Population 25 Years and Over	Population 25 years and over	Educational Attainment (16), Sex (2)	2011_2015_ACS5a	Spatial
+		B15003 - Educational Attainment for the Population 25 Years and Over	Population 25 years and over	Educational Attainment (24)	2011_2015_ACS5a	Spatial

DATA TABLE DETAILS

Table: B14005. Sex by School Enrollment by Educational Attainment by Employment Status for the Population 16 to 19 Years

Universe: Population 16 to 19 years

Variables in table (29) :

- Total
- Male
- Male: Enrolled in school
- Male: Enrolled in school: Employed
- Male: Enrolled in school: Unemployed
- Male: Enrolled in school: Not in labor force
- Male: Not enrolled in school
- Male: Not enrolled in school: High school graduate (includes equivalency)
- Male: Not enrolled in school: High school graduate (includes equivalency): Employed
- Male: Not enrolled in school: High school graduate (includes equivalency): Unemployed
- Male: Not enrolled in school: High school graduate (includes equivalency): Not in labor force
- Male: Not enrolled in school: Not high school graduate
- Male: Not enrolled in school: Not high school graduate: Employed
- Male: Not enrolled in school: Not high school graduate: Unemployed
- Male: Not enrolled in school: Not high school graduate: Not in labor force
- Female
- Female: Enrolled in school
- Female: Enrolled in school: Employed
- Female: Enrolled in school: Unemployed
- Female: Enrolled in school: Not in labor force
- Female: Not enrolled in school

FILTER » OPTIONS » REV

APPLY FILTERS ?

GEOGRAPHIC LEVELS

YEARS

TOPICS

DATASETS

RESET FILTERS

SELECT DATA ?

17 SOURCE TABLES

	POPULARITY	TAB
+		B14005. Sex by School Enrollment by Educational Attainment by Employment Status for the Population 16 to 19 Years
+		B15003. Educational Attainment for the Population 25 Years and Over
+		B15003. Educational Attainment for the Population 25 Years and Over

CONTINUE

VIEW 1 - 17 OF 17

BREAKDOWNS

Spatial

Spatial

Spatial

DATA CART

- 0 SOURCE TABLES
- 0 TIME SERIES TABLES
- 0 GIS FILES

SHOW SELECTIONS CONTINUE

FILTER » OPTIONS » REVIEW

APPLY FILTERS ?

HOW TO USE THE DATA FINDER

- GEOGRAPHIC LEVELS** ✓ BLCK_GRP
- YEARS** ✓ 2011-2015
- TOPICS** ✓ INCLUDES ▾ Educational Attainment
- DATASETS**

RESET FILTERS

SELECT DATA ?

17 SOURCE TABLES | 0 TIME SERIES TABLES | 53 GIS FILES

PAGE 1 OF 1 | 100 | VIEW 1 - 17 OF 17

	POPULARITY	TABLE NAME	UNIVERSE	CLASSIFICATIONS	YEAR - DATASET	BREAKDOWNS
+		B14005 - Sex by School Enrollment by Educational Attainment by Employment Status for the Population 16 to 19 Years	Population 16 to 19 years	Educational Attainment (2), Labor Force, Employment and Armed Forces Status (3), School Enrollment (2), Sex (2)	2011_2015_ACS5a	Spatial
+		B15002 - Sex by Educational Attainment for the Population 25 Years and Over	Population 25 years and over	Educational Attainment (16), Sex (2)	2011_2015_ACS5a	Spatial
+		B15003 - Educational Attainment for the Population 25 Years and Over	Population 25 years and over	Educational Attainment (24)	2011_2015_ACS5a	Spatial

CLASSIFICATION DETAILS ✕

Educational Attainment (2)

- High school graduate (includes equivalency)
- Not high school graduate

FILTER » OPTIONS » REV

APPLY FILTERS ?

- GEOGRAPHIC LEVELS
- YEARS
- TOPICS
- DATASETS

RESET FILTERS

SELECT DATA ?

17 SOURCE TABLES

	POPULARITY	TAB
+		B14 Sta
+		B15
+		B15003. Educational Attainment for the Population 25 Years and Over

CONTINUE

VIEW 1 - 17 OF 17

BREAKDOWNS

Spatial

Spatial

Spatial

Population 25 years and over	Educational Attainment (24)	2011_2015_ACS5a	Spatial
------------------------------	-----------------------------	-----------------	---------

CLASSIFICATION DETAILS ✕

Educational Attainment (16)

- No schooling completed
- Nursery to 4th grade
- 5th and 6th grade
- 7th and 8th grade
- 9th grade
- 10th grade
- 11th grade
- 12th grade, no diploma
- High school graduate (includes equivalency)
- Some college, less than 1 year
- Some college, 1 or more years, no degree
- Associate degree
- Bachelor's degree
- Master's degree
- Professional school degree
- Doctorate degree

FILTER » **OPTIONS** » **REV**

APPLY FILTERS ?

- GEOGRAPHIC LEVELS
- YEARS
- TOPICS
- DATASETS

RESET FILTERS

SELECT DATA ?

17 SOURCE TABLES

	POPULARITY	TAB
		B14 Sta
		B15
		B15003. Educational Attainment for the Population 25 Years and Over

CONTINUE

VIEW 1 - 17 OF 17

BREAKDOWNS

- [Spatial](#)
- [Spatial](#)
- [Spatial](#)

B15003. Educational Attainment for the Population 25 Years and Over	Population 25 years and over	Educational Attainment (24)	2011_2015_ACS5a	Spatial
---	------------------------------	-----------------------------	-----------------	---------



NHGIS GEOMARKER NATIONAL HISTORICAL GIS

HOME | SELECT DATA | MY DATA | SUPPORT

DATA CART

- 0 SOURCE TABLES
- 0 TIME SERIES TABLES
- 0 GIS FILES

SHOW SELECTIONS CONTINUE

FILTER » OPTIONS » REVIEW

APPLY FILTERS ?

HOW TO USE THE DATA FINDER

GEOGRAPHIC LEVELS ✓ BLCK_GRP

YEARS ✓ 2011-2015

TOPICS ✓ INCLUDES ▾ Educational Attainment

DATASETS

RESET FILTERS

SELECT DATA ?

17 SOURCE TABLES | 0 TIME SERIES TABLES | 53 GIS FILES

PAGE 1 OF 1 100 VIEW 1 - 17 OF 17

	POPULARITY	TABLE NAME	UNIVERSE	CLASSIFICATIONS	YEAR - DATASET	BREAKDOWNS
+	<div style="width: 100%; height: 10px; background-color: #ccc;"></div>	B14005 - Sex by School Enrollment by Educational Attainment by Employment Status for the Population 16 to 19 Years	Population 16 to 19 years	Educational Attainment (2), Labor Force, Employment and Armed Forces Status (3), School Enrollment (2), Sex (2)	2011_2015_ACS5a	Spatial
+	<div style="width: 10%; height: 10px; background-color: #333;"></div>	B15002 - Sex by Educational Attainment for the Population 25 Years and Over	Population 25 years and over	Educational Attainment (16), Sex (2)	2011_2015_ACS5a	Spatial
+	<div style="width: 100%; height: 10px; background-color: #333;"></div>	B15003 - Educational Attainment for the Population 25 Years and Over	Population 25 years and over	Educational Attainment (24)	2011_2015_ACS5a	Spatial

DATASET DETAILS

2011_2015_ACS5a

2015 American Community Survey: 5-Year Data [2011-2015, Block Groups & Larger Areas]

Dataset group: 2015 American Community Survey

Group is comprised of 5 datasets derived from the US Census Bureau's 2015 American Community Survey (ACS) Summary Files. One dataset contains the 1-Year Summary File, providing estimates of 2015 population and housing characteristics for areas with a population of 65,000 or more. The 5-Year Summary File provides estimates of average characteristics from 2011 through 2015. NHGIS divides it into 4 datasets, each providing tables for a different set of geographic levels.

Available breakdown variables:

Geographic Component

Available geographic levels:

- Nation
- Region
- Division
- State
- State (by American Indian Area/Alaska Native Area/Hawaiian Home Land)
- State (by American Indian Area/Alaska Native Area/Hawaiian Home Land--Tribal Subdivision/Remainder)
- State (by Metropolitan Statistical Area/Micropolitan Statistical Area)
- State (by Metropolitan Statistical Area/Micropolitan Statistical Area--Metropolitan Division)
- State (by Combined Statistical Area)
- State (by Combined Statistical Area--Metropolitan Statistical Area/Micropolitan Statistical Area)
- State (by New England City and Town Area)
- State (by New England City and Town Area--New England City and Town Area Division)

FILTER » OPTIONS » REV

APPLY FILTERS ?

GEOGRAPHIC LEVELS

YEARS

TOPICS

DATASETS

RESET FILTERS

SELECT DATA ?

17 SOURCE TABLES

	POPULARITY	TAB
+		B14 Sta
+		B15
+		B15003 Educational Attainment for the Population 25 Years and Over

CONTINUE

VIEW 1 - 17 OF 17

BREAKDOWNS

Spatial

Spatial

Spatial

			Population 25 years and over	Educational Attainment (24)	2011_2015_ACS5a	Spatial
--	--	--	------------------------------	-----------------------------	-----------------	---------



NHGIS GEOMARKER NATIONAL HISTORICAL GIS

HOME | SELECT DATA | MY DATA | SUPPORT

DATA CART

- 0 SOURCE TABLES
- 0 TIME SERIES TABLES
- 0 GIS FILES

SHOW SELECTIONS CONTINUE

FILTER » OPTIONS » REVIEW

APPLY FILTERS ?

HOW TO USE THE DATA FINDER

GEOGRAPHIC LEVELS ✓ BLCK_GRP

YEARS ✓ 2011-2015

TOPICS ✓ INCLUDES ▾ Educational Attainment

DATASETS

RESET FILTERS

SELECT DATA ?

17 SOURCE TABLES | 0 TIME SERIES TABLES | 53 GIS FILES

PAGE 1 OF 1 100 ▾

VIEW 1 - 17 OF 17

	POPULARITY	TABLE NAME	UNIVERSE	CLASSIFICATIONS	YEAR - DATASET	BREAKDOWNS
+		B14005 - Sex by School Enrollment by Educational Attainment by Employment Status for the Population 16 to 19 Years	Population 16 to 19 years	Educational Attainment (2), Labor Force, Employment and Armed Forces Status (3), School Enrollment (2), Sex (2)	2011_2015_ACS5a	Spatial
+		B15002 - Sex by Educational Attainment for the Population 25 Years and Over	Population 25 years and over	Educational Attainment (16), Sex (2)	2011_2015_ACS5a	Spatial
+		B15003 - Educational Attainment for the Population 25 Years and Over	Population 25 years and over	Educational Attainment (24)	2011_2015_ACS5a	Spatial

BREAKDOWN DETAILS

Geographic Subarea (2010 Census and American Community Survey)

- o Total area
- o Urban
- o Rural
- o American Indian Reservation and Trust Land--Federal
- o American Indian Reservation and Trust Land--State
- o Oklahoma Tribal Statistical Area
- o Tribal Designated Statistical Area
- o Alaska Native Village Statistical Area
- o State Designated Tribal Statistical Area
- o Hawaiian Home Land
- o In metropolitan or micropolitan statistical area
- o In metropolitan statistical area
- o In metropolitan statistical area--in principal city
- o In metropolitan statistical area--not in principal city
- o In micropolitan statistical area
- o In micropolitan statistical area--in principal city
- o In micropolitan statistical area--not in principal city
- o Not in metropolitan or micropolitan statistical area
- o Not in metropolitan statistical area

FILTER » OPTIONS » REV

APPLY FILTERS ?

GEOGRAPHIC LEVELS

YEARS

TOPICS

DATASETS

RESET FILTERS

SELECT DATA ?

17 SOURCE TABLES

POPULARITY TABLE

B14 Sta

B15

B15003. Educational Attainment for the Population 25 Years and Over

Population 25 years and over

Educational Attainment (24)

2011_2015_ACS5a

VIEW 1 - 17 OF 17

BREAKDOWNS

Spatial

Spatial

Spatial



NHGIS GEOMARKER
NATIONAL HISTORICAL GIS

HOME | SELECT DATA | MY DATA | SUPPORT

DATA CART

0 SOURCE TABLES
0 TIME SERIES TABLES
0 GIS FILES

SHOW SELECTIONS

CONTINUE

FILTER > OPTIONS > REVIEW

APPLY FILTERS ?

HOW TO USE THE DATA FINDER

GEOGRAPHIC LEVELS

YEARS

TOPICS



INCLUDES ▾

Journey to Work

DATASETS

RESET FILTERS

SELECT DATA ?

2496 SOURCE TABLES

7 TIME SERIES TABLES

1166 GIS FILES

1 20 ▾
PAGE 1 OF 59

VIEW 1 - 20 OF 1166

	POPULARITY	YEAR	GEOGRAPHIC LEVEL	EXTENT	BASIS
+		1960	Census Tract	United States	2000 TIGER/Line
+		1960	Census Tract	United States	2008 TIGER/Line
+		1970	State	United States	2000 TIGER/Line
+		1970	County	United States	2000 TIGER/Line
+		1970	County	United States	2008 TIGER/Line
+		1970	Census Tract	United States	2000 TIGER/Line
+		1970	Census Tract	United States	2008 TIGER/Line
+		1970	Place (Points)	United States	GNIS, TIGER/Line & Census Maps



NHGIS GEOMARKER NATIONAL HISTORICAL GIS

HOME | SELECT DATA | MY DATA | SUPPORT

DATA CART

- 0 SOURCE TABLES
- 0 TIME SERIES TABLES
- 0 GIS FILES

SHOW SELECTIONS CONTINUE

FILTER > OPTIONS > REVIEW

APPLY FILTERS ?

HOW TO USE THE DATA FINDER

- GEOGRAPHIC LEVELS
- YEARS
- TOPICS
- DATASETS

INCLUDES Journey to Work

RESET FILTERS

SELECT DATA ?

- 2496 SOURCE TABLES
- 7 TIME SERIES TABLES
- 1166 GIS FILES

PAGE 1 OF 1 20

POPULARITY	SEQUENCE	TABLE NAME	GEOGRAPHIC INTEGRATION	YEARS	GEOGRAPHIC LEVELS
	6500.01	CS4. Workers of Working Age* by Means of Transportation to Work [9]	Nominal	1970, 1980, 1990, 2000, 2008-2012	STATE, COUNTY, CTY, SUB, PLACE
	6500.02	AC2. Workers 16 Years and Over by Means of Transportation to Work [18]	Nominal	1980, 1990, 2000, 2008-2012	STATE, COUNTY, CTY, SUB, PLACE
	6500.03	CS3. Workers 16 Years and Over by Means of Transportation to Work [20]	Nominal	1990, 2000, 2008-2012	NATION, REGION, DIVISION, STATE, COUNTY, TRACT, CTY, SUB, PLACE
	6500.04	CW0. Total Commuters (Workers 16 Years and Over Who Did Not Work at Home)	Nominal	1980, 1990, 2000, 2008-2012	NATION, REGION, DIVISION, STATE, COUNTY, TRACT, CTY, SUB, PLACE
	6510.01	CS0. Commuters by Travel Time to Work [8]	Nominal	1980, 1990, 2000, 2008-2012	NATION, REGION, DIVISION, STATE, COUNTY, TRACT, CTY, SUB, PLACE
	6510.02	CS1. Commuters by Travel Time to Work [12]	Nominal	1990, 2000, 2008-2012	NATION, REGION, DIVISION, STATE, COUNTY, TRACT, CTY, SUB, PLACE



NHGIS GEOMARKER
NATIONAL HISTORICAL GIS

HOME | SELECT DATA | MY DATA | SUPPORT

DATA CART

- 0 SOURCE TABLES
- 0 TIME SERIES TABLES
- 0 GIS FILES

SHOW SELECTIONS CONTINUE

FILTER » OPTIONS » REVIEW

APPLY FILTERS ?

HOW TO USE THE DATA FINDER

- GEOGRAPHIC LEVELS**
- YEARS
- TOPICS
- DATASETS

No filters selected.

FILTER > OPTIONS > REVIEW

APPLY FILTERS ?

- GEOGRAPHIC LEVELS
- YEARS
- TOPICS
- DATASETS

GEOGRAPHIC LEVELS

SHOW COMPOUND GEOGRAPHIC LEVELS ?

MOST POPULAR	NATION + Nation
ALL	STATE + State
STANDARD LARGE AREA UNITS	COUNTY + County (by State)
SMALL AREA STATISTICAL UNITS	CENSUS TRACT + Census Tract (by State--County)
PLACES / CITIES	BLOCK GROUP + Block Group (by State--County--Census Tract)
COUNTY SUBDIVISIONS	BLOCK + Block (by State--County--Census Tract)
METROPOLITAN AND URBAN / RURAL	COUNTY SUBDIVISION + County Subdivision (by State--County)
ZIP CODE AREAS	PLACE + Place (by State)
SCHOOL AREAS	CONSOLIDATED CITY + Consolidated City (by State)
LEGISLATIVE / ELECTION AREAS	CORE BASED (METROPOLITAN/MICROPOLITAN) STATISTICAL AREA [2003-PRESENT] + Metropolitan Statistical Area/Micropolitan Statistical Area
NATIVE AMERICAN / ALASKAN / HAWAIIAN	METROPOLITAN STATISTICAL AREA/CONSOLIDATED METROPOLITAN STATISTICAL AREA [1990-2000] + Metropolitan Statistical Area/Consolidated Metropolitan Statistical Area
NHGIS TIME SERIES LEVELS	URBAN AREA [1970-PRESENT] + Urban Area
	5-DIGIT ZIP CODE TABULATION AREA [2000-PRESENT] + 5-Digit ZIP Code Tabulation Area
	5-DIGIT ZIP CODE [1980-2002] + 5-Digit ZIP Code

CANCEL SUBMIT

LOG IN | REGISTER | IPUMS.ORG

DATA CART

- SOURCE TABLES
- TIME SERIES TABLES
- GIS FILES

HOW SELECTIONS

IPUMS NHGIS

FILTER » OPTIONS » REVIEW

APPLY FILTERS ?

- GEOGRAPHIC LEVELS
- YEARS
- TOPICS
- DATASETS

GEOGRAPHIC LEVELS

SHOW COMPOUND GEOGRAPHIC LEVELS ?

MOST POPULAR	CORE BASED (METROPOLITAN/MICROPOLITAN) STATISTICAL AREA [2003-PRESENT] + Metropolitan Statistical Area/Micropolitan Statistical Area + Metropolitan Statistical Area/Micropolitan Statistical Area (by Combined Statistical Area)
ALL	
STANDARD LARGE AREA UNITS	METROPOLITAN DIVISION [2003-PRESENT] + Metropolitan Division (by Metropolitan Statistical Area/Micropolitan Statistical Area)
SMALL AREA STATISTICAL UNITS	COMBINED STATISTICAL AREA [2003-PRESENT] + Combined Statistical Area
PLACES / CITIES	METROPOLITAN STATISTICAL AREA/CONSOLIDATED METROPOLITAN STATISTICAL AREA [1990-2000] + Metropolitan Statistical Area/Consolidated Metropolitan Statistical Area + Metropolitan Statistical Area/Consolidated Metropolitan Statistical Area [500000 or more persons] + Metropolitan Statistical Area/Consolidated Metropolitan Statistical Area [250000 or more persons]
COUNTY SUBDIVISIONS	PRIMARY METROPOLITAN STATISTICAL AREA [1990-2000] + Consolidated Metropolitan Statistical Area--Primary Metropolitan Statistical Area + Consolidated Metropolitan Statistical Area [250000 or more persons]--Primary Metropolitan Statistical Area + Consolidated Metropolitan Statistical Area [500000 or more persons]--Primary Metropolitan Statistical Area + Primary Metropolitan Statistical Area (by Metropolitan Statistical Area/Consolidated Metropolitan Statistical Area)
METROPOLITAN AND URBAN / RURAL	METROPOLITAN STATISTICAL AREA/PRIMARY METROPOLITAN STATISTICAL AREA [2000 EEO] + Metropolitan Statistical Area/Primary Metropolitan Statistical Area
ZIP CODE AREAS	STANDARD METROPOLITAN STATISTICAL AREA [1950-1980] + Standard Metropolitan Statistical Area
SCHOOL AREAS	STANDARD CONSOLIDATED STATISTICAL AREA [1980] + Standard Consolidated Statistical Area
LEGISLATIVE / ELECTION AREAS	NEW ENGLAND CITY AND TOWN AREA [2003-PRESENT] + New England City and Town Area + New England City and Town Area (by Combined New England City and Town Area)
NATIVE AMERICAN / ALASKAN / HAWAIIAN	NEW ENGLAND CITY AND TOWN AREA DIVISION [2003-PRESENT] + New England City and Town Area Division (by New England City and Town Area)
NHGIS TIME SERIES LEVELS	COMBINED NEW ENGLAND CITY AND TOWN AREA [2003-PRESENT] + Combined New England City and Town Area

CANCEL SUBMIT

DATA CART

- SOURCE TABLES
- TIME SERIES TABLES
- GIS FILES

HOW SELECTIONS

GEOGRAPHIC LEVELS

SHOW COMPOUND GEOGRAPHIC LEVELS ?

GEOGRAPHIC LEVEL DETAILS

LEVEL: METROPOLITAN STATISTICAL AREA/MICROPOLITAN STATISTICAL AREA
UNIT CLASS: CORE BASED (METROPOLITAN/MICROPOLITAN) STATISTICAL AREA [2003-PRESENT]
NHGIS ID: CBSA
NHGIS CODE: 310

YEARS FOR WHICH GIS FILES ARE AVAILABLE:
2009, 2010, 2011, 2012, 2013, 2014, 2015, 2016, 2017, 2018, 2019, 2020

NUMBER OF TIME SERIES TABLES FOR THIS LEVEL: 111

DATASETS WITH SOURCE TABLES FOR THIS LEVEL:

Table with 3 columns: Group, Code, Dataset. Rows include 2009 American Community Survey, 2010 American Community Survey, and 2010 Census with various codes and dataset descriptions.

LEVELS

Combined New England City and Town Area

CANCEL

SUBMIT

IPUMS NHGIS

FILTER » OPTIONS » REVIEW

APPLY FILTERS ?

- GEOGRAPHIC LEVELS
- YEARS
- TOPICS
- DATASETS

GEOGRAPHIC LEVELS

SHOW COMPOUND GEOGRAPHIC LEVELS ?

MOST POPULAR	<p>CORE BASED (METROPOLITAN/MICROPOLITAN) STATISTICAL AREA [2003-PRESENT]</p> <ul style="list-style-type: none"> + Metropolitan Statistical Area/Micropolitan Statistical Area Metropolitan Statistical Area/Micropolitan Statistical Area (by Combined Statistical Area)
ALL	
STANDARD LARGE AREA UNITS	<p>METROPOLITAN DIVISION [2003-PRESENT]</p> <ul style="list-style-type: none"> + Metropolitan Division (by Metropolitan Statistical Area/Micropolitan Statistical Area)
SMALL AREA STATISTICAL UNITS	<p>COMBINED STATISTICAL AREA [2003-PRESENT]</p> <ul style="list-style-type: none"> + Combined Statistical Area
PLACES / CITIES	<p>METROPOLITAN STATISTICAL AREA/CONSOLIDATED METROPOLITAN STATISTICAL AREA [1990-2000]</p> <ul style="list-style-type: none"> + Metropolitan Statistical Area/Consolidated Metropolitan Statistical Area Metropolitan Statistical Area/Consolidated Metropolitan Statistical Area [500000 or more persons] Metropolitan Statistical Area/Consolidated Metropolitan Statistical Area [250000 or more persons]
COUNTY SUBDIVISIONS	<p>PRIMARY METROPOLITAN STATISTICAL AREA [1990-2000]</p> <ul style="list-style-type: none"> + Consolidated Metropolitan Statistical Area--Primary Metropolitan Statistical Area Consolidated Metropolitan Statistical Area [250000 or more persons]--Primary Metropolitan Statistical Area Consolidated Metropolitan Statistical Area [500000 or more persons]--Primary Metropolitan Statistical Area Primary Metropolitan Statistical Area (by Metropolitan Statistical Area/Consolidated Metropolitan Statistical Area)
METROPOLITAN AND URBAN / RURAL	<p>METROPOLITAN STATISTICAL AREA/PRIMARY METROPOLITAN STATISTICAL AREA [2000 EEO]</p> <ul style="list-style-type: none"> Metropolitan Statistical Area/Primary Metropolitan Statistical Area
ZIP CODE AREAS	<p>STANDARD METROPOLITAN STATISTICAL AREA [1950-1980]</p> <ul style="list-style-type: none"> + Standard Metropolitan Statistical Area
SCHOOL AREAS	<p>STANDARD CONSOLIDATED STATISTICAL AREA [1980]</p> <ul style="list-style-type: none"> + Standard Consolidated Statistical Area
LEGISLATIVE / ELECTION AREAS	<p>NEW ENGLAND CITY AND TOWN AREA [2003-PRESENT]</p> <ul style="list-style-type: none"> + New England City and Town Area New England City and Town Area (by Combined New England City and Town Area)
NATIVE AMERICAN / ALASKAN / HAWAIIAN	<p>NEW ENGLAND CITY AND TOWN AREA DIVISION [2003-PRESENT]</p> <ul style="list-style-type: none"> + New England City and Town Area Division (by New England City and Town Area)
NHGIS TIME SERIES LEVELS	<p>COMBINED NEW ENGLAND CITY AND TOWN AREA [2003-PRESENT]</p> <ul style="list-style-type: none"> + Combined New England City and Town Area

CANCEL
SUBMIT

LOG IN | REGISTER | IPUMS.ORG

DATA CART

SOURCE TABLES

TIME SERIES TABLES

GIS FILES

HOW SELECTIONS



FILTER > OPTIONS > REVIEW

APPLY FILTERS ?

- GEOGRAPHIC LEVELS
- YEARS
- TOPICS
- DATASETS

GEOGRAPHIC LEVELS

HIDE COMPOUND GEOGRAPHIC LEVELS ?

MOST POPULAR	<p>CORE BASED (METROPOLITAN/MICROPOLITAN) STATISTICAL AREA [2003-PRESENT]</p> <ul style="list-style-type: none"> Metropolitan Statistical Area/Micropolitan Statistical Area Metropolitan Statistical Area/Micropolitan Statistical Area (by Combined Statistical Area) Metropolitan Statistical Area/Micropolitan Statistical Area (by State) Metropolitan Statistical Area/Micropolitan Statistical Area (by State--Combined Statistical Area)
ALL	
STANDARD LARGE AREA UNITS	<p>METROPOLITAN DIVISION [2003-PRESENT]</p> <ul style="list-style-type: none"> Metropolitan Division (by Metropolitan Statistical Area/Micropolitan Statistical Area) Metropolitan Division (by State--Metropolitan Statistical Area/Micropolitan Statistical Area)
SMALL AREA STATISTICAL UNITS	<p>COMBINED STATISTICAL AREA [2003-PRESENT]</p> <ul style="list-style-type: none"> Combined Statistical Area Combined Statistical Area (by State)
PLACES / CITIES	
COUNTY SUBDIVISIONS	<p>METROPOLITAN STATISTICAL AREA/CONSOLIDATED METROPOLITAN STATISTICAL AREA [1990-2000]</p> <ul style="list-style-type: none"> Metropolitan Statistical Area/Consolidated Metropolitan Statistical Area Metropolitan Statistical Area/Consolidated Metropolitan Statistical Area [500000 or more persons] Metropolitan Statistical Area/Consolidated Metropolitan Statistical Area [250000 or more persons]
METROPOLITAN AND URBAN / RURAL	<p>PRIMARY METROPOLITAN STATISTICAL AREA [1990-2000]</p> <ul style="list-style-type: none"> Consolidated Metropolitan Statistical Area--Primary Metropolitan Statistical Area Consolidated Metropolitan Statistical Area [250000 or more persons]--Primary Metropolitan Statistical Area Consolidated Metropolitan Statistical Area [500000 or more persons]--Primary Metropolitan Statistical Area Primary Metropolitan Statistical Area (by Metropolitan Statistical Area/Consolidated Metropolitan Statistical Area)
ZIP CODE AREAS	<p>METROPOLITAN STATISTICAL AREA/PRIMARY METROPOLITAN STATISTICAL AREA [2000 EEO]</p> <ul style="list-style-type: none"> Metropolitan Statistical Area/Primary Metropolitan Statistical Area
SCHOOL AREAS	
LEGISLATIVE / ELECTION AREAS	<p>STANDARD METROPOLITAN STATISTICAL AREA [1950-1980]</p> <ul style="list-style-type: none"> Standard Metropolitan Statistical Area Standard Metropolitan Statistical Area (by State)
NATIVE AMERICAN / ALASKAN / HAWAIIAN	<p>STANDARD CONSOLIDATED STATISTICAL AREA [1980]</p> <ul style="list-style-type: none"> Standard Consolidated Statistical Area Consolidated Area (by State)
NHGIS TIME SERIES LEVELS	<p>NEW ENGLAND CITY AND TOWN AREA [2003-PRESENT]</p> <ul style="list-style-type: none"> New England City and Town Area New England City and Town Area (by Combined New England City and Town Area)

CANCEL
SUBMIT

- DATA CART
- SOURCE TABLES
- TIME SERIES TABLES
- GIS FILES
- HOW SELECTIONS



FILTER > OPTIONS > REVIEW

APPLY FILTERS

- GEOGRAPHIC LEVELS
- YEARS**
- TOPICS
- DATASETS

YEARS

Dimmed choices are not available given your other filter selections.

DECENNIAL YEARS

- 2020
- 2010
- 2000
- 1990
- 1980
- 1970
- 1960
- 1950
- 1940
- 1930
- 1920
- 1910
- 1900
- 1890
- 1880
- 1870
- 1860
- 1850
- 1840
- 1830
- 1820
- 1810
- 1800
- 1790

NON-DECENNIAL YEARS

- | | | | |
|-------------------------------|-------------------------------|-------------------------------|-------------------------------|
| <input type="checkbox"/> 2019 | <input type="checkbox"/> 1986 | <input type="checkbox"/> 1954 | <input type="checkbox"/> 1922 |
| <input type="checkbox"/> 2018 | <input type="checkbox"/> 1985 | <input type="checkbox"/> 1953 | <input type="checkbox"/> 1921 |
| <input type="checkbox"/> 2017 | <input type="checkbox"/> 1984 | <input type="checkbox"/> 1952 | <input type="checkbox"/> 1919 |
| <input type="checkbox"/> 2016 | <input type="checkbox"/> 1983 | <input type="checkbox"/> 1951 | <input type="checkbox"/> 1918 |
| <input type="checkbox"/> 2015 | <input type="checkbox"/> 1982 | <input type="checkbox"/> 1949 | <input type="checkbox"/> 1917 |
| <input type="checkbox"/> 2014 | <input type="checkbox"/> 1981 | <input type="checkbox"/> 1948 | <input type="checkbox"/> 1916 |
| <input type="checkbox"/> 2013 | <input type="checkbox"/> 1979 | <input type="checkbox"/> 1947 | <input type="checkbox"/> 1915 |
| <input type="checkbox"/> 2012 | <input type="checkbox"/> 1978 | <input type="checkbox"/> 1946 | <input type="checkbox"/> 1906 |
| <input type="checkbox"/> 2011 | <input type="checkbox"/> 1977 | <input type="checkbox"/> 1945 | <input type="checkbox"/> 1886 |
| <input type="checkbox"/> 2009 | <input type="checkbox"/> 1976 | <input type="checkbox"/> 1944 | <input type="checkbox"/> 1885 |
| <input type="checkbox"/> 2007 | <input type="checkbox"/> 1975 | <input type="checkbox"/> 1943 | <input type="checkbox"/> 1884 |
| <input type="checkbox"/> 2006 | <input type="checkbox"/> 1974 | <input type="checkbox"/> 1942 | <input type="checkbox"/> 1883 |
| <input type="checkbox"/> 2005 | <input type="checkbox"/> 1973 | <input type="checkbox"/> 1941 | <input type="checkbox"/> 1882 |
| <input type="checkbox"/> 2004 | <input type="checkbox"/> 1972 | <input type="checkbox"/> 1939 | <input type="checkbox"/> 1881 |
| <input type="checkbox"/> 2003 | <input type="checkbox"/> 1971 | <input type="checkbox"/> 1938 | <input type="checkbox"/> 1879 |
| <input type="checkbox"/> 2002 | <input type="checkbox"/> 1969 | <input type="checkbox"/> 1937 | <input type="checkbox"/> 1878 |
| <input type="checkbox"/> 2001 | <input type="checkbox"/> 1968 | <input type="checkbox"/> 1936 | <input type="checkbox"/> 1877 |
| <input type="checkbox"/> 1999 | <input type="checkbox"/> 1967 | <input type="checkbox"/> 1935 | <input type="checkbox"/> 1876 |
| <input type="checkbox"/> 1998 | <input type="checkbox"/> 1966 | <input type="checkbox"/> 1934 | <input type="checkbox"/> 1875 |
| <input type="checkbox"/> 1997 | <input type="checkbox"/> 1965 | <input type="checkbox"/> 1933 | <input type="checkbox"/> 1874 |
| <input type="checkbox"/> 1996 | <input type="checkbox"/> 1964 | <input type="checkbox"/> 1932 | <input type="checkbox"/> 1873 |
| <input type="checkbox"/> 1995 | <input type="checkbox"/> 1963 | <input type="checkbox"/> 1931 | <input type="checkbox"/> 1872 |
| <input type="checkbox"/> 1994 | <input type="checkbox"/> 1962 | <input type="checkbox"/> 1929 | <input type="checkbox"/> 1871 |
| <input type="checkbox"/> 1993 | <input type="checkbox"/> 1961 | <input type="checkbox"/> 1928 | <input type="checkbox"/> 1869 |
| <input type="checkbox"/> 1992 | <input type="checkbox"/> 1959 | <input type="checkbox"/> 1927 | <input type="checkbox"/> 1868 |
| <input type="checkbox"/> 1991 | <input type="checkbox"/> 1958 | <input type="checkbox"/> 1926 | <input type="checkbox"/> 1867 |
| <input type="checkbox"/> 1989 | <input type="checkbox"/> 1957 | <input type="checkbox"/> 1925 | |
| <input type="checkbox"/> 1988 | <input type="checkbox"/> 1956 | <input type="checkbox"/> 1924 | |
| <input type="checkbox"/> 1987 | <input type="checkbox"/> 1955 | <input type="checkbox"/> 1923 | |

5-YEAR RANGES

- 2016-2020
- 2015-2019
- 2014-2018
- 2013-2017
- 2012-2016
- 2011-2015
- 2010-2014
- 2009-2013
- 2008-2012
- 2007-2011
- 2006-2010
- 2005-2009

3-YEAR RANGES

- 2011-2013
- 2010-2012
- 2009-2011
- 2008-2010

SCHOOL YEARS

- School Year 2011-2012
- School Year 2010-2011
- School Year 2009-2010

CANCEL SUBMIT

DATA CART

SOURCE TABLES

TIME SERIES TABLES

GIS FILES

HOW SELECTIONS



FILTER > OPTIONS > REVIEW

APPLY FILTERS ?

- GEOGRAPHIC LEVELS
- YEARS
- TOPICS**
- DATASETS

TOPICS

SELECTED TOPIC FILTERS ?

No Topic Filters have been selected

Dimmed choices are not available given your other filter selections.

TABLE TOPIC FILTER ?

BREAKDOWN FILTER ?

POPULATION		GENERAL	<input checked="" type="checkbox"/> Total Population
HOUSING		CORE DEMOGRAPHICS	
AGRICULTURE	<input checked="" type="checkbox"/>	<input checked="" type="checkbox"/> Age	<input checked="" type="checkbox"/> Sex
BUSINESS AND INDUSTRY	<input checked="" type="checkbox"/>	<input checked="" type="checkbox"/> Marriage	<input checked="" type="checkbox"/> Births and Fertility
OTHER SUBJECTS	<input checked="" type="checkbox"/>	<input checked="" type="checkbox"/> Deaths	
TECHNICAL	<input checked="" type="checkbox"/>	RACE, ETHNICITY, AND ORIGINS	
	<input checked="" type="checkbox"/>	<input checked="" type="checkbox"/> Race	<input checked="" type="checkbox"/> Hispanic Origin
	<input checked="" type="checkbox"/>	<input checked="" type="checkbox"/> Ancestry	<input checked="" type="checkbox"/> Nativity and Place of Birth
	<input checked="" type="checkbox"/>	<input checked="" type="checkbox"/> Citizenship	<input checked="" type="checkbox"/> Year of Entry
	<input checked="" type="checkbox"/>	<input checked="" type="checkbox"/> Language	
	<input checked="" type="checkbox"/>	GEOGRAPHY	
	<input checked="" type="checkbox"/>	<input checked="" type="checkbox"/> Urban, Rural, and Farm Status	<input checked="" type="checkbox"/> Place and Metropolitan Status

CANCEL SUBMIT

- DATA CART
- SOURCE TABLES
 - TIME SERIES TABLES
 - GIS FILES
 - HOW SELECTIONS



FILTER » OPTIONS » REVIEW

APPLY FILTERS ?

- GEOGRAPHIC LEVELS
- YEARS
- TOPICS
- DATASETS**

DATASETS

ALL	2020 CENSUS	+ 2020_PL9471	PL. 94-171 Redistricting Data Summary File
SERIES TYPE:	2020 AMERICAN COMMUNITY SURVEY	+ 2016_2020_ACS5a	5-Year Data [2016-2020, Block Groups & Larger Areas]
DECENNIAL CENSUS		+ 2016_2020_ACS5b	5-Year Data [2016-2020, Tracts & Larger Areas]
		+ 2016_2020_ACS5c	5-Year Data [2016-2020, Summary by Residence 1 Year Ago]
		+ 2016_2020_ACS5d	5-Year Data [2016-2020, Summary by Place of Work]
AMERICAN COMMUNITY SURVEY	2019 AMERICAN COMMUNITY SURVEY	+ 2019_ACS1	1-Year Data
		+ 2015_2019_ACS5a	5-Year Data [2015-2019, Block Groups & Larger Areas]
		+ 2015_2019_ACS5b	5-Year Data [2015-2019, Tracts & Larger Areas]
		+ 2015_2019_ACS5c	5-Year Data [2015-2019, Summary by Residence 1 Year Ago]
		+ 2015_2019_ACS5d	5-Year Data [2015-2019, Summary by Place of Work]
AGRICULTURE	2018 AMERICAN COMMUNITY SURVEY	+ 2018_ACS1	1-Year Data
		+ 2014_2018_ACS5a	5-Year Data [2014-2018, Block Groups & Larger Areas]
		+ 2014_2018_ACS5b	5-Year Data [2014-2018, Tracts & Larger Areas]
		+ 2014_2018_ACS5c	5-Year Data [2014-2018, Summary by Residence 1 Year Ago]
		+ 2014_2018_ACS5d	5-Year Data [2014-2018, Summary by Place of Work]
RELIGIOUS BODIES	2017 AMERICAN COMMUNITY SURVEY	+ 2017_ACS1	1-Year Data
		+ 2013_2017_ACS5a	5-Year Data [2013-2017, Block Groups & Larger Areas]
		+ 2013_2017_ACS5b	5-Year Data [2013-2017, Tracts & Larger Areas]
		+ 2013_2017_ACS5c	5-Year Data [2013-2017, Summary by Residence 1 Year Ago]
		+ 2013_2017_ACS5d	5-Year Data [2013-2017, Summary by Place of Work]
VITAL STATISTICS	2016 AMERICAN COMMUNITY SURVEY	+ 2016_ACS1	1-Year Data
		+ 2012_2016_ACS5a	5-Year Data [2012-2016, Block Groups & Larger Areas]
		+ 2012_2016_ACS5b	5-Year Data [2012-2016, Tracts & Larger Areas]
		+ 2012_2016_ACS5c	5-Year Data [2012-2016, Summary by Residence 1 Year Ago]
		+ 2012_2016_ACS5d	5-Year Data [2012-2016, Summary by Place of Work]
COUNTY BUSINESS PATTERNS	2015 AMERICAN COMMUNITY SURVEY	+ 2015_ACS1	1-Year Data
OTHER			
MODERN CENSUS SUMMARY FILES:			
CORE FILES: 100% COUNT			
CORE FILES: SAMPLE BASED			
SPECIAL & SUPPLEMENTAL FILES			

CANCEL SUBMIT

DATA CART

- SOURCE TABLES
- TIME SERIES TABLES
- GIS FILES
- HOW SELECTIONS

IPUMS NHGIS

FILTER » OPTIONS » REVIEW

APPLY FILTERS ?

GEOGRAPHIC LEVELS

YEARS

TOPICS

DATASETS

DATASETS

<input type="checkbox"/>	1870__cAg	Agriculture Data [US, States & Counties]
<input type="checkbox"/>	1870__cMfg	Manufacturing Data [US, States & Counties]
<input type="checkbox"/>	1870__cPAX	Population, Agriculture & Other Data [US, States & Counties]
<input type="checkbox"/>	1870__sPHX	Population, Housing & Other Data [US & States]
<input type="checkbox"/>	1870__sRN	Race & Nativity Data [US & States]
<input type="checkbox"/>	1870__sROG	Religious Bodies, Occupation & Government Data [US & States]
<input checked="" type="checkbox"/>	1867-2010 VITAL STATISTICS	
<input checked="" type="checkbox"/>	1867__cM	Marriage & Divorce Data [Counties]
1860 CENSUS		
<input type="checkbox"/>	1860__cAg	Agriculture Data [US, States & Counties]
<input type="checkbox"/>	1860__cPAX	Population, Agriculture & Other Data [US, States & Counties]
<input type="checkbox"/>	1860__sPAX	Population, Agriculture & Other Data [US & States]
1850-1959 CENSUS OF AGRICULTURE		
<input type="checkbox"/>	1850__1959__cFV	Farm Real Estate Values [States & Counties]
1850 CENSUS		
<input type="checkbox"/>	1850__cAg	Agriculture Data [US, States & Counties]
<input type="checkbox"/>	1850__cPAX	Population, Agriculture & Other Data [US, States & Counties]
<input type="checkbox"/>	1850__sPAX	Population, Agriculture & Other Data [US & States]
1840 CENSUS		
<input type="checkbox"/>	1840__cAg	Agriculture Data [US, States & Counties]
<input type="checkbox"/>	1840__cMfg	Manufacturing Data [US, States & Counties]
<input type="checkbox"/>	1840__cPopX	Population & Other Data [US, States & Counties]
1830 CENSUS		
<input type="checkbox"/>	1830__cPop	Population Data [US, States & Counties]
1820 CENSUS		
<input type="checkbox"/>	1820__cPop	Population Data [US, States & Counties]
1810 CENSUS		
<input type="checkbox"/>	1810__cPop	Population Data [US, States & Counties]
1800 CENSUS		
<input type="checkbox"/>	1800__cPop	Population Data [US, States & Counties]
1790 CENSUS		
<input type="checkbox"/>	1790__cPop	Population Data [US, States & Counties]

LOG IN | REGISTER | IPUMS.ORG

DATACART

SOURCE TABLES

TIME SERIES TABLES

GIS FILES

HOW SELECTIONS

CANCEL SUBMIT

DATASETS

1867-2010 VITAL STATISTICS



1867__2010__cMD

Marriage & Divorce Data [Counties]

1860 CENSUS



1860__cAg

Agriculture Data [US, States & Counties]



1860__cPAX

Population, Agriculture & Other Data [US, States & Counties]



1860__sPAX

Population, Agriculture & Other Data [US & States]

DATASET GROUP: 1867-2010 VITAL STATISTICS

Group consists of 1 dataset provided by the National Center for Family and Marriage Research (NCFMR) at Bowling Green State University. NCFMR researchers derived the 2000 and 2010 data from county court record information obtained through individual state or county agencies. They derived the earlier data from print reports from the U.S. Bureau of Labor (1867-1886), the U.S. Census Bureau (1890, 1900, 1916, 1922-1932), the National Office of Vital Statistics (1949-1950, 1952, 1957-1958), and the National Center for Health Statistics (1959-1987). NHGIS researchers reformatted the data and enriched the metadata for redistribution.

1810 CENSUS



1810__cPop

Population Data [US, States & Counties]

1800 CENSUS



1800__cPop

Population Data [US, States & Counties]

CANCEL

SUBMIT



IPUMS NHGIS

[ABOUT](#)

[REGISTER](#)

[DONATE TO NHGIS](#)

DATA

[BROWSE AND SELECT DATA](#)

[DOWNLOAD OR REVISE MY DATA](#)

[API](#)

SUPPLEMENTAL DATA

[GEOGRAPHIC CROSSWALKS](#)

[ENVIRONMENTAL SUMMARIES](#)

[PRIVACY-PROTECTED DEMO DATA](#)

[SABINS SCHOOL AREAS](#)

DOCUMENTATION

DATA AVAILABILITY

[OVERVIEW OF DATASETS](#)

[TABULAR DATA SOURCES](#)

[TIME SERIES TABLES](#)

[GIS FILES](#)

[REVISION HISTORY](#)

SUPPORT

[FAQ](#)

[USER GUIDE](#)

[USER FORUM](#)

RESEARCH

DATA AVAILABILITY

[Summary tables](#)

[Time series tables](#)

[GIS files](#)

[Geographic crosswalks](#)

SUMMARY TABLES

NHGIS includes summary tables from all U.S. decennial censuses, from the American Community Survey, and from a selection of other sources.

Highlights:

- Decennial census data (1790-2020)
 - County and state tables since 1790
 - Census tract tables since 1910
 - Tables for all original census summary levels, down to census blocks, since 1970
- American Community Survey data
 - 5-year periods from 2005-2009 through 2016-2020
 - 1-year periods from 2010 through 2019
 - The only 2020 ACS 1-year summary data published by the Census Bureau are the [Experimental Data Tables](#), specially designed to address deficiencies in the 2020 sample due to the COVID-19 pandemic. NHGIS has not added the

[GIS FILES](#)[REVISION HISTORY](#)

SUPPORT

[FAQ](#)[USER GUIDE](#)[USER FORUM](#)

RESEARCH

[CITING IPUMS NHGIS](#)[IPUMS BIBLIOGRAPHY](#)

- American Community Survey data
 - 5-year periods from 2005-2009 through 2016-2020
 - 1-year periods from 2010 through 2019
 - The only 2020 ACS 1-year summary data published by the Census Bureau are the [Experimental Data Tables](#), specially designed to address deficiencies in the 2020 sample due to the COVID-19 pandemic. NHGIS has not added the Experimental Data Tables because they include only nation- and state-level data for a smaller range of subjects than standard 1-Year Summary Files.
- County Business Patterns data (1970-2002, annual)
- Vital statistics
 - Birth and death data for counties and states (1915-2007, annual)
 - Marriage and divorce data for counties (70 years between 1867 and 2010)
- Agricultural census data (1840-1950)
- Religious bodies data (1850-1952)
- Manufacturing census data (1840-1940)
- 2010 Census data for [SABINS](#) school attendance areas
- Environmental summaries*
 - Land cover for counties and census tracts (2001, 2006, 2011)
 - Precipitation and temperature for counties (1895-2014)

The NHGIS [Data Finder](#) allows users to explore which tables are available by geographic level, by year, by topic, and/or by source dataset.

More details:

- [Overview of NHGIS Datasets](#)
- [NHGIS Data Table Availability by Topic and Source](#) (PDF)

*The environmental summaries are not available via the Data Finder. Users may download them directly from the [Environmental Summaries](#) page.

[▲ Back to Top](#)

TIME SERIES TABLES

Summary tables by level

Years	States & counties
1790-1900	X

Summary tables by level

Years	States & counties	Census tracts
1790-1900	X	--
1910-1960	X	X

Summary tables by level

Years	States & counties	Census tracts	<i>All census levels down to blocks</i>
1790-1900	X	--	--
1910-1960	X	X	--
1970-2020	X	X	X

Summary tables by level

Years	States & counties	Census tracts*	All census levels down to blocks
1790-1900	X	--	--
1910-1960	X	X	--
1970-2020	X	X	X

*Tract coverage... 1910: 8 cities →
1990: nationwide

- County Business Patterns data (1970-2002, annual)
- Vital statistics
 - Birth and death data for counties and states (1915-2007, annual)
 - Marriage and divorce data for counties (70 years between 1867 and 2010)
- Agricultural census data (1840-1950)
- Religious bodies data (1850-1952)
- Manufacturing census data (1840-1940)
- 2010 Census data for [SABINS](#) school attendance areas
- Environmental summaries*
 - Land cover for counties and census tracts (2001, 2006, 2011)
 - Precipitation and temperature for counties (1895-2014)

The NHGIS [Data Finder](#) allows users to explore which tables are available by geographic level, by year, by topic, and/or by source dataset.

More details:

- [Overview of NHGIS Datasets](#)
- [NHGIS Data Table Availability by Topic and Source](#) (PDF)

*The environmental summaries are not available via the Data Finder. Users may download them directly from the [Environmental Summaries](#) page.

- County Business Patterns data (1970-2002, annual)
- Vital statistics
 - Birth and death data for counties and states (1915-2007, annual)
 - Marriage and divorce data for counties (70 years between 1867 and 2010)
- Agricultural census data (1840-1950)
- Religious bodies data (1850-1952)
- Manufacturing census data (1840-1940)
- 2010 Census data for [SABINS](#) school attendance areas
- Environmental summaries*
 - Land cover for counties and census tracts (2001, 2006, 2011)
 - Precipitation and temperature for counties (1895-2014)

The NHGIS [Data Finder](#) allows users to explore which tables are available by geographic level, by year, by topic, and/or by source dataset.

More details:

- [Overview of NHGIS Datasets](#)
- [NHGIS Data Table Availability by Topic and Source](#) (PDF)

*The environmental summaries are not available via the Data Finder. Users may download them directly from the [Environmental Summaries](#) page.



NHGIS GEOMARKER
NATIONAL HISTORICAL GIS

HOME | SELECT DATA | MY DATA | SUPPORT



IPUMS NHGIS

ABOUT

REGISTER [↗](#)

DONATE TO NHGIS [↗](#)

DATA

BROWSE AND SELECT DATA

DOWNLOAD OR REVISE MY DATA

API [↗](#)

SUPPLEMENTAL DATA

GEOGRAPHIC CROSSWALKS

ENVIRONMENTAL SUMMARIES

PRIVACY-PROTECTED DEMO DATA

SABINS SCHOOL AREAS

DOCUMENTATION

DATA AVAILABILITY

OVERVIEW OF DATASETS

TABULAR DATA SOURCES

TIME SERIES TABLES

GIS FILES

REVISION HISTORY

SUPPORT

FAQ

USER GUIDE

USER FORUM [↗](#)

RESEARCH

DOWNLOAD U.S. CENSUS DATA TABLES & MAPPING FILES

The **National Historical Geographic Information System (NHGIS)** provides easy access to summary tables and time series of population, housing, agriculture, and economic data, along with GIS-compatible boundary files, for years from 1790 through the present and for all levels of U.S. census geography, including states, counties, tracts, and blocks. [Read more.](#)

START HERE:

Get Data

WHAT IS IPUMS?

IPUMS provides census and survey data from around the world integrated across time and space. IPUMS integration and documentation makes it easy to study change, conduct comparative research, merge information across data types, and analyze individuals within family and community context. Data and services are available free of charge. [Learn more about IPUMS.](#)

NHGIS NEWS

[2016-2020 ACS 5-YEAR SUMMARY FILE NOW AVAILABLE](#) | [GEOGRAPHIC CROSSWALKS FOR 2010-2020 ACS DATA](#)

| [PRIVACY-PROTECTED 2010 CENSUS DEMONSTRATION DATA ON AGE, SEX, RACE, ETHNICITY, AND MORE](#)

| [FIRST RELEASE OF 1960 BLOCK BOUNDARIES](#) | [TIME SERIES EXTENDED TO 2020 CENSUS & 2019 ACS](#)

| [BLOG POST: BETTER MAPS WITH CENSUS CENTERS OF POPULATION](#)



NHGIS GEOMARKER NATIONAL HISTORICAL GIS

HOME | SELECT DATA | MY DATA | SUPPORT



IPUMS NHGIS

- ABOUT
REGISTER
DONATE TO NHGIS

DATA

- BROWSE AND SELECT DATA
DOWNLOAD OR REVISE MY DATA
API

SUPPLEMENTAL DATA

- GEOGRAPHIC CROSSWALKS
ENVIRONMENTAL SUMMARIES
PRIVACY-PROTECTED DEMO DATA
SABINS SCHOOL AREAS

DOCUMENTATION

- DATA AVAILABILITY

OVERVIEW OF DATASETS

- TABULAR DATA SOURCES
TIME SERIES TABLES

OVERVIEW OF NHGIS DATASETS

NHGIS summary tables are organized into datasets distinguished by the years, geographic levels and topics they cover; by the data source and survey coverage (e.g., sample-based vs. 100% count); and by the breakdown variables available.

NHGIS datasets are in turn organized into dataset groups, each of which corresponds to a single census program or to specific data measurement or release years.

NHGIS DATASET GROUPS

Table with 2 columns: ACS Groups and survey years (2020, 2019, 2018, 2017, 2016 American Community Survey).

1970 CENSUS

The 6 datasets in the 1970 Census dataset group correspond to the first 4 series ("Counts") of the Summary Computer Tape Files of the 1970 Census of Population and Housing. Note: this is the oldest NHGIS dataset group derived entirely from computer files produced by the US Census Bureau, involving no transcription from print sources.

Code	Dataset	# Tables	# Geog. Levels	Breakdowns (# Categories)
1970_Cnt1	Count 1 - 100% Data [Block Groups, Enum. Districts, Cong. Districts, etc.]	107	8	--
1970_Cnt2	Count 2 - 100% Data [Tracts, Urban Areas, Metro Areas, etc.]	241	11	Geographic Subarea (15)
1970_Cnt3	Count 3 - 100% Data [Blocks & Tracts: Restricted to Areas with Block Statistics]	83	2	--
1970_Cnt4Pa	Count 4Pa - Sample-Based Population Data	28	11	Geographic Subarea (15)
1970_Cnt4Pb	Count 4Pb - Sample-Based Population Data with Race/Ethnicity Breakdown	112	11	Geographic Subarea (20), Race/Ethnicity (4)
1970_Cnt4H	Count 4H - Sample-Based Housing Data	485	11	Geographic Subarea (20)



NHGIS GEOMARKER
NATIONAL HISTORICAL GIS

HOME | SELECT DATA | MY DATA | SUPPORT



IPUMS NHGIS

ABOUT

REGISTER

DONATE TO NHGIS

DATA

BROWSE AND SELECT DATA

DOWNLOAD OR REVISE MY DATA

API

SUPPLEMENTAL DATA

GEOGRAPHIC CROSSWALKS

ENVIRONMENTAL SUMMARIES

PRIVACY-PROTECTED DEMO DATA

SABINS SCHOOL AREAS

DOCUMENTATION

DATA AVAILABILITY

OVERVIEW OF DATASETS

TABULAR DATA SOURCES

TIME-SERIES TABLES

GIS FILES

REVISION HISTORY

SUPPORT

FAQ

TABULAR DATA SOURCES

Documentation for the digital sources of NHGIS data tables:

- [Secondary Sources \(1790-2010\)](#)
 - [1790-1960](#)
 - [1910, 1920 & 1930 Tract & Enumeration District Data](#)
 - [1915-1972 Vital Statistics: Natality & Mortality Data"](#)
 - [1970-2007 Vital Statistics: Natality & Mortality Data](#)
 - [1867-2010 Vital Statistics: Marriage & Divorce Data](#)
 - [1920-1935 Census of Agriculture Data](#)
 - [1920-1936 Bank Deposit Data](#)
 - [1940, 1950 & 1960 Tract Data](#)
- [Decennial Census Summary Files \(1960-2020\)](#)
 - [1960](#)
 - [1970](#)
 - [1980](#)
 - [1990](#)
 - [2000](#)
 - [2010](#)
 - [2020](#)

Forthcoming...

- ACS
 - 1-Year Summary File: September+
 - 5-Year Summary File: December+
- 2020 census summary files
 - Demographic & Housing Characteristics (DHC)
 - May 2023
 - Detailed DHC-A, Detailed DHC-B, Supplemental-DHC
 - Starting August 2023



IPUMS NHGIS

ABOUT

REGISTER [↗](#)

DONATE TO NHGIS [↗](#)

DATA

BROWSE AND SELECT DATA

DOWNLOAD OR REVISE MY DATA

API [↗](#)

SUPPLEMENTAL DATA

GEOGRAPHIC CROSSWALKS

ENVIRONMENTAL SUMMARIES

PRIVACY-PROTECTED DEMO DATA

SABINS SCHOOL AREAS

DOCUMENTATION

DATA AVAILABILITY

OVERVIEW OF DATASETS

TABULAR DATA SOURCES

TIME SERIES TABLES

GIS FILES

REVISION HISTORY

SUPPORT

FAQ

USER GUIDE

USER FORUM [↗](#)

PRIVACY-PROTECTED 2010 CENSUS DEMONSTRATION DATA

The IPUMS NHGIS Privacy-Protected Demonstration Data link together two versions of 2010 Census summary tables:

1. Original tables from the 2010 Census Summary Files
2. New tables based on experimental runs of the Census Bureau's 2020 Disclosure Avoidance System (DAS) applied to the original 2010 Census responses

The 2020 DAS represents a major change in the Census Bureau's approach to protecting privacy. The Privacy-Protected Demonstration Data facilitate assessments of the new framework, enabling a broad range of users to investigate and provide feedback about the quality of data produced by different DAS versions, including both preliminary trial versions and the final production system.

- [Purpose](#)
- [Feedback and Questions](#)
- [Technical Details](#)
- Versions
 - [Vintage 2019-10-29](#)
 - [Vintage 2020-05-27](#)
 - [Coverage](#)
 - [Parameters](#)
 - [Data Files](#)



NHGIS GEOMARKER NATIONAL HISTORICAL GIS

HOME | SELECT DATA | MY DATA | SUPPORT



- IPUMS NHGIS**
- ABOUT
- REGISTER
- DONATE TO NHGIS
- DATA**
- BROWSE AND SELECT DATA
- DOWNLOAD OR REVISE MY DATA
- API
- SUPPLEMENTAL DATA**
- GEOGRAPHIC CROSSWALKS
- ENVIRONMENTAL SUMMARIES
- PRIVACY-PROTECTED DEMO DATA
- SABINS SCHOOL AREAS
- DOCUMENTATION**
- DATA AVAILABILITY**
- OVERVIEW OF DATASETS
- TABULAR DATA SOURCES
- TIME SERIES TABLES
- GIS FILES
- REVISION HISTORY
- SUPPORT**
- FAQ
- USER GUIDE
- USER FORUM
- RESEARCH**

DATA AVAILABILITY

- [Summary tables](#)
- [Time series tables](#)
- [GIS files](#)
- [Geographic crosswalks](#)

SUMMARY TABLES

NHGIS includes summary tables from all U.S. decennial censuses, from the American Community Survey, and from a selection of other sources.

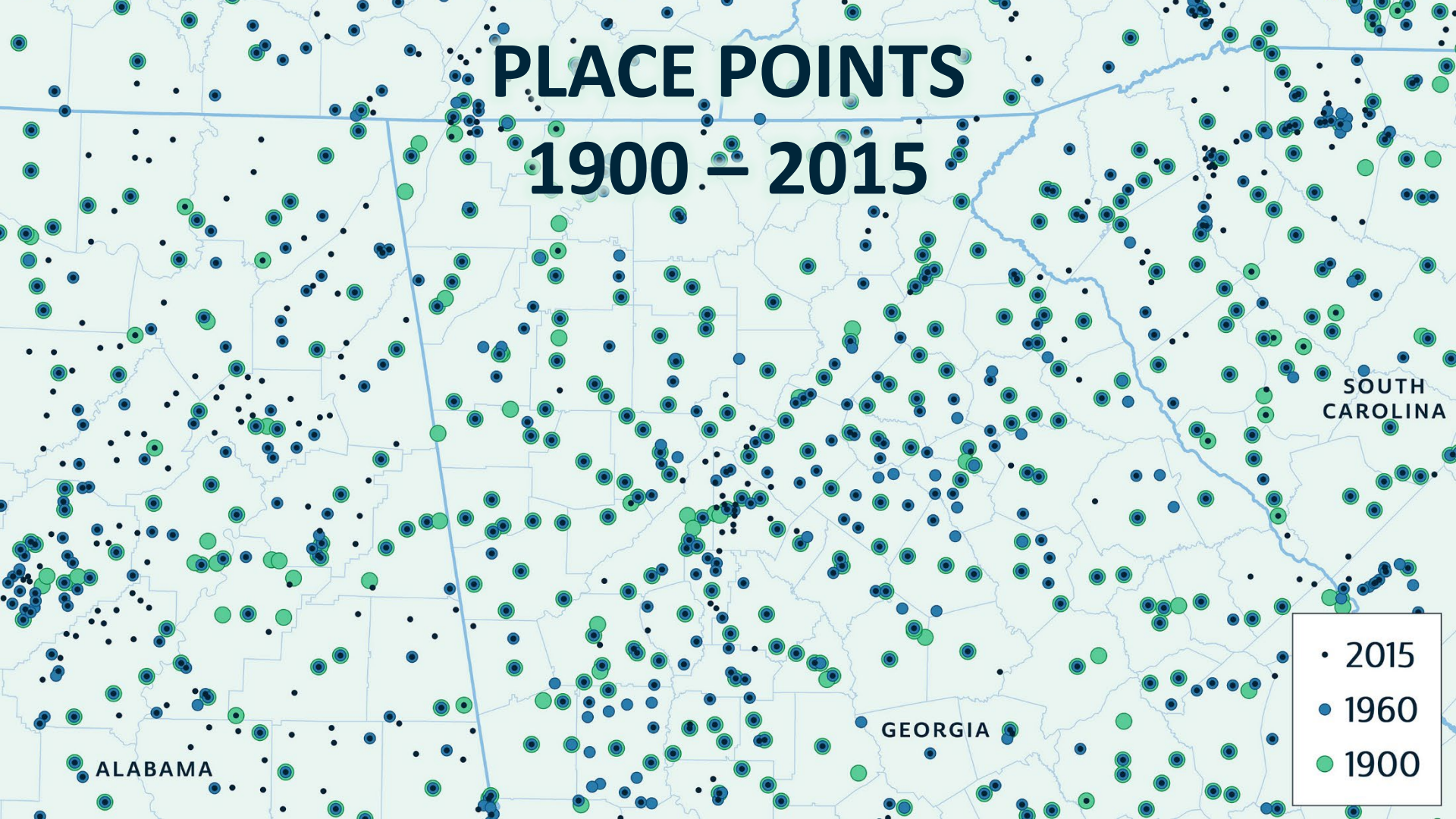
Highlights:

- Decennial census data (1790-2020)
 - County and state tables since 1790
 - Census tract tables since 1910
 - Tables for all original census summary levels, down to census blocks, since 1970
- American Community Survey data
 - 5-year periods from 2005-2009 through 2016-2020
 - 1-year periods from 2010 through 2019
 - The only 2020 ACS 1-year summary data published by the Census Bureau are the [Experimental Data Tables](#), specially designed to address deficiencies in the 2020 sample due to the COVID-19 pandemic. NHGIS has not added the

GIS File Availability by Geographic Unit and Year

Primary Census Divisions	2020	2012-2019	2011	2010	2009	2000	1990	1980	1950-1970	1910-1940	1790-1900
Nation	X	X	X	X ^m	X	X ^a					
Region	X	X	X	X ^m	X	X ^a					
Division	X	X	X	X ^m	X	X ^a					
State [map] [list]	X	X	X	X ^m	X	X ^b	X	X	X	X	X
County [map] [list]	X	X	X	X ^m	X	X ^c	X ^d	X ^d	X ^d	X ^d	X ^d
Census Tract [map] [list] [interactive map]	X	X	X	X ^m	*	X ^c	X ^d	X ^d	X ^d	X ^d	
Block Group	X	X	X	X ^m	*	X ^b	X				
Block	X			X ^m		X ^b	X	X ^{e,n}			
Civil / Urban / Metropolitan Units	2020	2012-2019	2011	2010	2009	2000	1990	1980	1950-1970	1910-1940	1790-1900
County Subdivision	X	X	X	X ^m	X	X ^b	X	X ^e			
Subminor Civil Division [map]	X	X	X	X ^m		X ^a					
Place (Boundary Files) [map] [interactive map]	X	X	X	X ^m	X	X ^b	X	X ^e			
Place (Point Files)		X ^l	X	X	X	X	X	X	X	X	1900
Consolidated City [map]	X	X	X	X ^m	X	X ^a					
Urban Area [map]	X	X		X	X	X	X				
Core Based (Metropolitan/Micropolitan) Statistical Area	X	X	X	X	X						
Metropolitan Division	X	X	X	X	X						
Combined Statistical Area	X	X	X	X	X						
Metropolitan Statistical Area/ Consolidated Metropolitan Statistical						X	X				

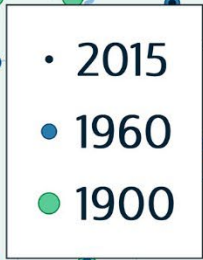
PLACE POINTS 1900 – 2015

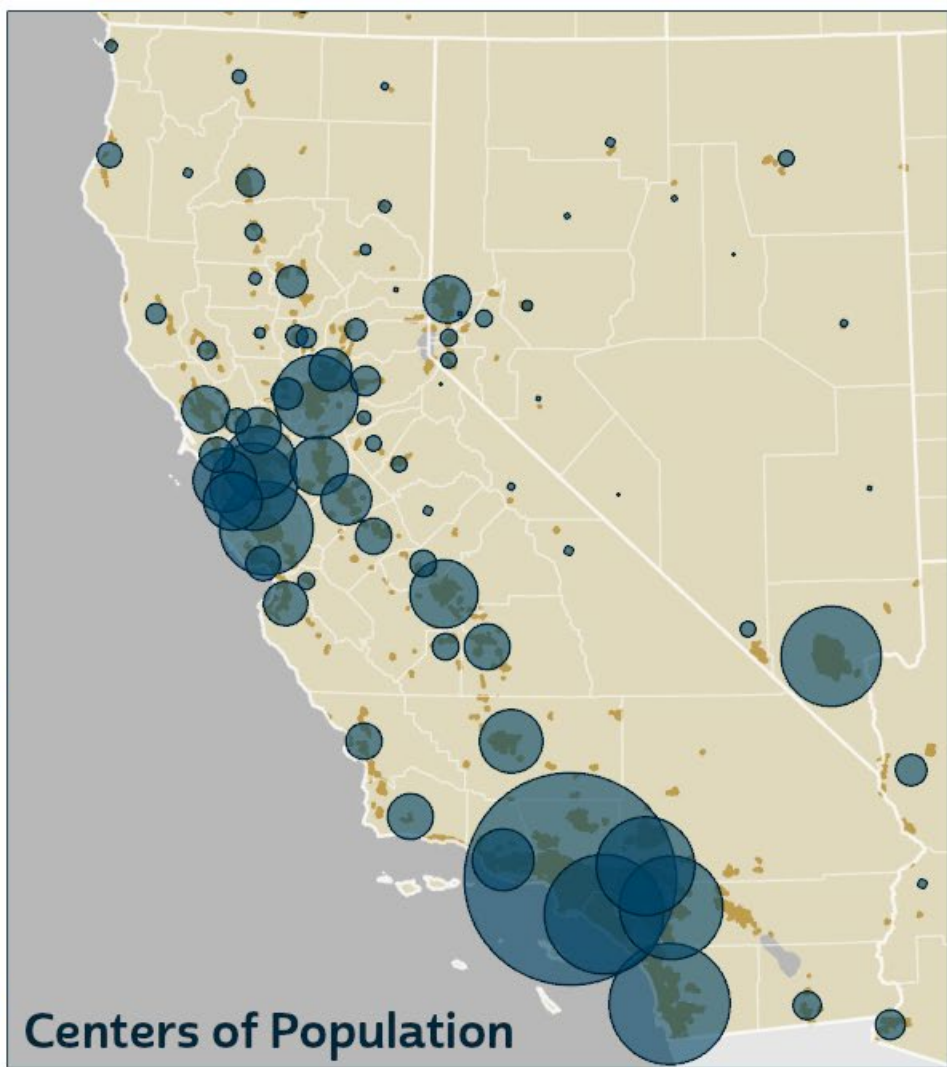


SOUTH
CAROLINA

GEORGIA

ALABAMA



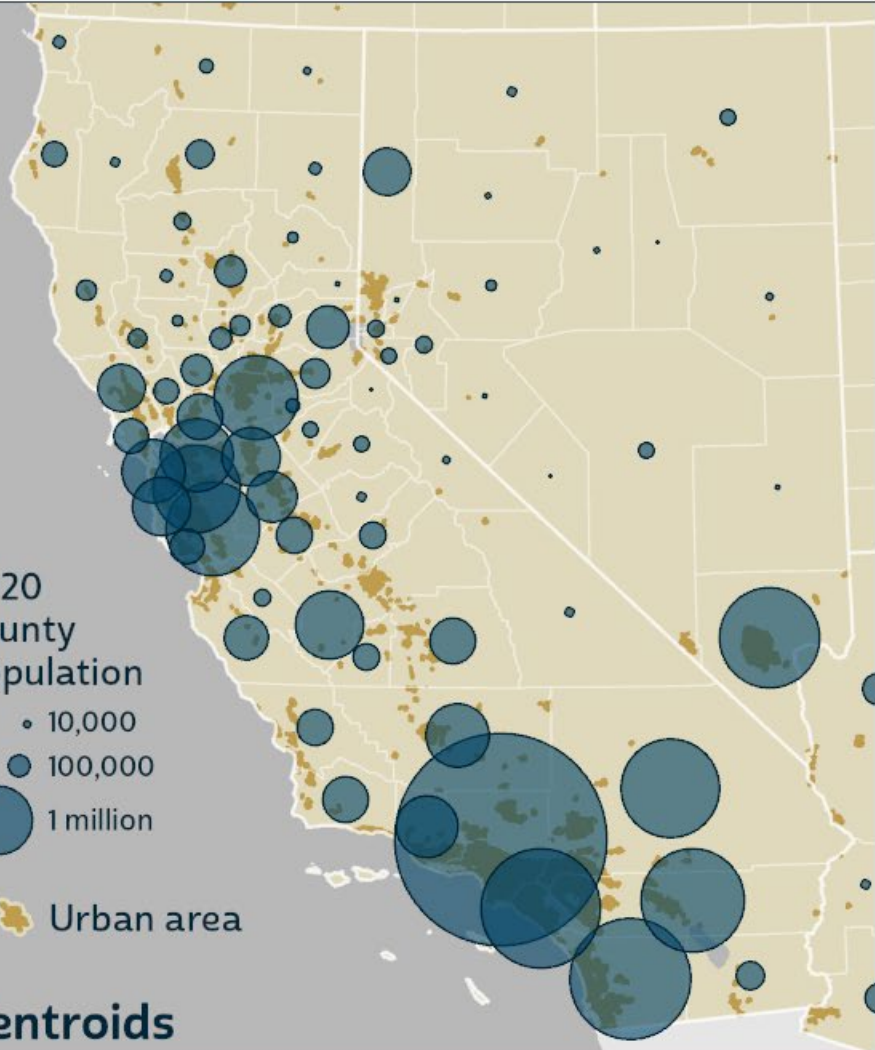


2020
county
population

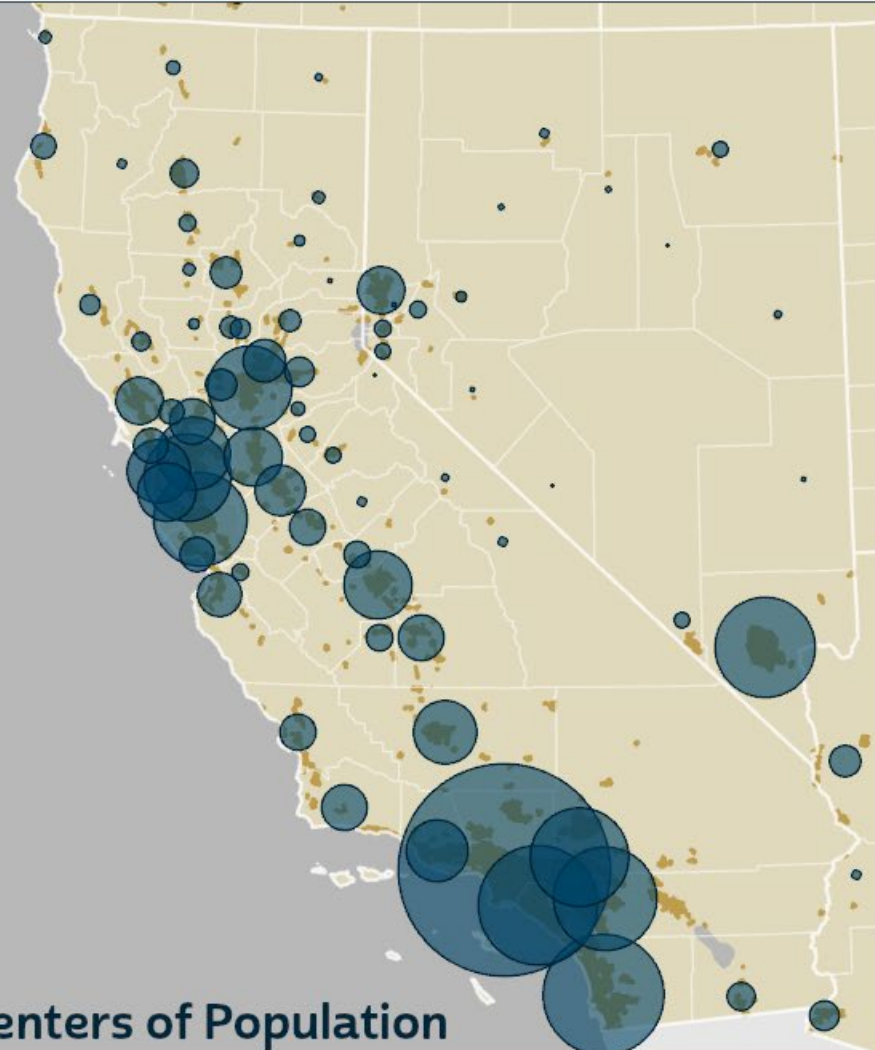
- 10,000
- 100,000
- 1 million

Urban area

Centroids

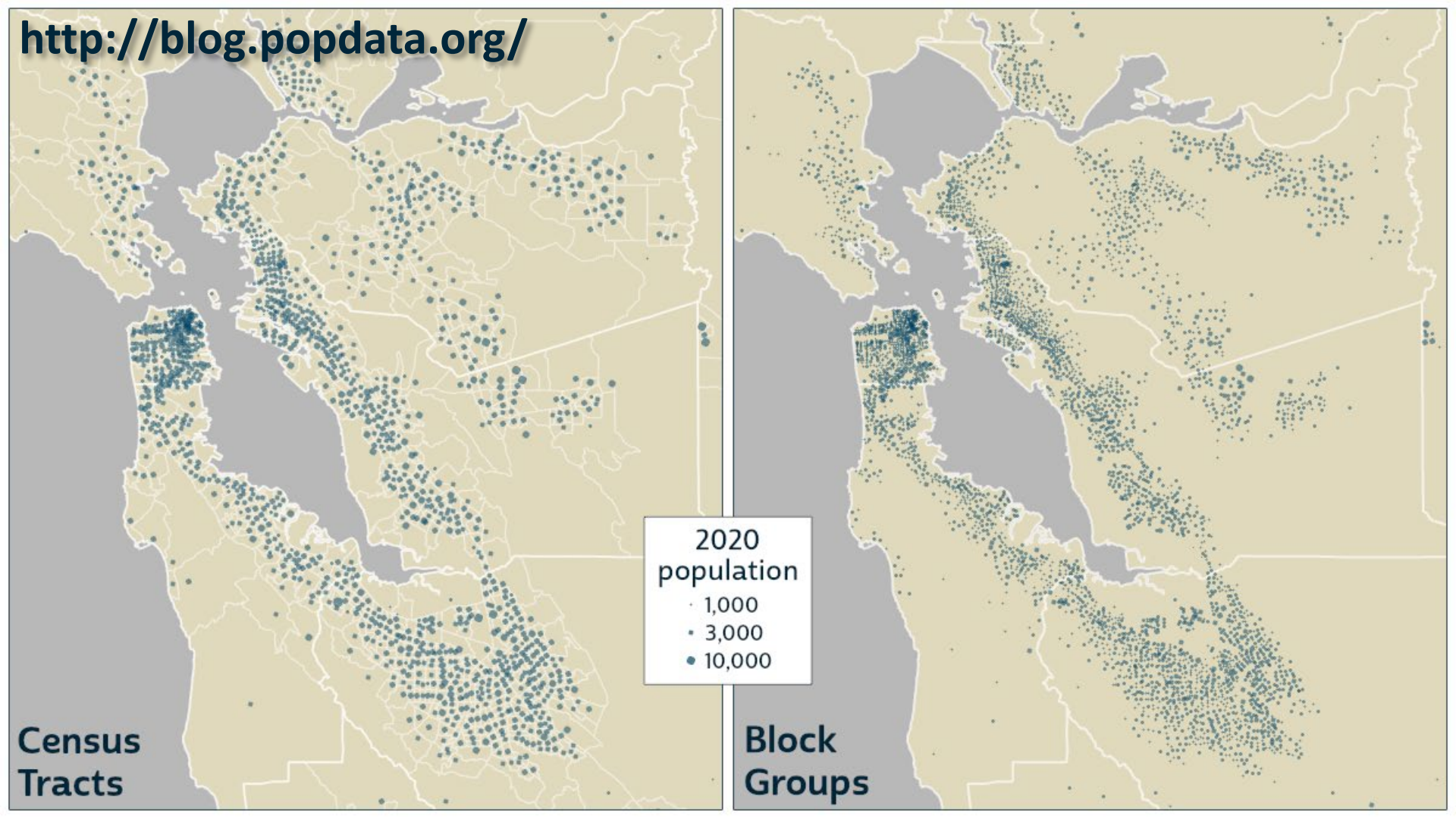


Centers of Population



Census
Tracts

Block
Groups





IPUMS NHGIS

ABOUT

REGISTER

DONATE TO NHGIS

DATA

BROWSE AND SELECT DATA

DOWNLOAD OR REVISE MY DATA

API

SUPPLEMENTAL DATA

GEOGRAPHIC CROSSWALKS

ENVIRONMENTAL SUMMARIES

PRIVACY-PROTECTED DEMO DATA

SABINS SCHOOL AREAS

DOCUMENTATION

DATA AVAILABILITY

OVERVIEW OF DATASETS

TABULAR DATA SOURCES

TIME SERIES TABLES

GIS FILES

1980 BLOCK BOUNDARIES

PLACE POINTS

REVISION HISTORY

SUPPORT

FAQ

USER GUIDE

GIS FILES

- [File format and geometry](#)
- [Geometry years](#)
- [Derivation](#)
 - [Standard procedures for boundary files](#)
 - [1980 and earlier boundaries based on 2000 TIGER/Line files](#)
 - [1980 place and county subdivision boundaries](#)
 - [1980 block boundaries](#)
 - [2000 boundaries based on 2010 TIGER/Line files](#)
 - [2009 and later boundaries](#)
 - [2010 boundaries based on 2020 TIGER/Line files](#)
 - [School attendance areas](#)
 - [Centers of population](#)
 - [Place points](#)
- [Realigned boundaries based on 2008 TIGER/Line files](#)
- [Census Bureau TIGER/Line Technical Documentation](#)

For an overview of the geographic units and years covered by NHGIS GIS files, see [Data Availability](#).

FILE FORMAT AND GEOMETRY

NHGIS provides its geometry files for geographic information systems (GIS) as *shapefiles*, a standard spatial data file format. The shapefile format was originally defined for use in Esri

IPUMS NHGIS

ABOUT

REGISTER [↗](#)

DONATE TO NHGIS [↗](#)

DATA

BROWSE AND SELECT DATA

DOWNLOAD OR REVISE MY DATA

API [↗](#)

SUPPLEMENTAL DATA

GEOGRAPHIC CROSSWALKS

ENVIRONMENTAL SUMMARIES

PRIVACY-PROTECTED DEMO DATA

SABINS SCHOOL AREAS

DOCUMENTATION

DATA AVAILABILITY

OVERVIEW OF DATASETS

TABULAR DATA SOURCES

TIME SERIES TABLES

RIS FILES

1980 BLOCK BOUNDARIES

PLACE POINTS

REVISION HISTORY

SUPPORT

FAQ

USER GUIDE

USER FORUM [↗](#)

RESEARCH

CITING IPUMS NHGIS

IPUMS BIBLIOGRAPHY

1980 BLOCK BOUNDARIES

NHGIS has released Version 1.0 of our 1980 block shapefiles, depicting 1980 census block boundaries in [48 metropolitan areas](#) throughout the U.S.

These files provide a more accurate and complete representation of 1980 block boundaries than is available from the U.S. Census Bureau's 1992 TIGER/Line Files, the only previously existing source of nationwide digital 1980 block definitions.

We currently provide the boundary files through this web page along with documentation and census summary statistics for 1980 blocks. In the future, we will provide both the boundary files and summary tables through the [NHGIS Data Finder](#) [↗](#).

- [Overview](#)
- [Technical Details](#)
 - [Basics](#)
 - [Geographic Coverage](#)
 - [Data for Whole Collection Blocks, Not Tabulation Blocks](#)
- [Download: Boundaries](#)
- [Download: Statistics](#)
- [Feedback and Questions](#)
- [Citation and Use](#)
- [Credits](#)

OVERVIEW

The U.S. Census Bureau's [1992 TIGER/Line Files](#) [↗](#) include both 1990 and 1980 census block boundaries, but the 1980 blocks are badly incomplete and often inaccurate. Of the 2.5 million blocks that appear in the 1980 census summary tables, about 765,000 do not appear in the 1992 TIGER/Line Files, and there are missing cases in nearly every county where block data were provided.

Covered Metro Areas By Population

Rank	Standard Metropolitan Statistical Area	1980 Population
3.	Chicago, Ill.	7,103,624
4.	Philadelphia, Pa.-N.J.	4,716,818
6.	San Francisco-Oakland, Calif.	3,250,630
15.	Minneapolis-St. Paul, Minn.-Wis.	2,113,533
19.	Cleveland, Ohio	1,898,825
20.	San Diego, Calif.	1,861,846
22.	Denver-Boulder, Colo.	1,620,902
23.	Seattle-Everett, Wash.	1,607,469
26.	Phoenix, Ariz.	1,509,052
27.	Cincinnati, Ohio-Ky.-Ind.	1,401,491
28.	Milwaukee, Wis.	1,397,143
29.	Kansas City, Mo.-Kans.	1,327,106
34.	Indianapolis, Ind.	1,166,575
35.	Columbus, Ohio	1,093,316
45.	Birmingham, Ala.	847,487
51.	Toledo, Ohio-Mich.	791,599
52.	Honolulu, Hawaii	762,565



IPUMS NHGIS

- ABOUT
- REGISTER
- DONATE TO NHGIS

DATA

- BROWSE AND SELECT DATA
- DOWNLOAD OR REVISE MY DATA
- API

SUPPLEMENTAL DATA

- GEOGRAPHIC CROSSWALKS
- ENVIRONMENTAL SUMMARIES
- PRIVACY-PROTECTED DEMO DATA
- SABINS SCHOOL AREAS

DOCUMENTATION

- DATA AVAILABILITY
- OVERVIEW OF DATASETS
- TABULAR DATA SOURCES

TIME SERIES TABLES

- 1990 BLOCK DATA STANDARDIZED TO 2010 GEOGRAPHY
- 2000 BLOCK DATA STANDARDIZED TO 2010 GEOGRAPHY

- GIS FILES
- REVISION HISTORY

SUPPORT

- FAQ

TIME SERIES TABLES

- [What are time series tables?](#)
- [How to access time series tables](#)
- [An example: *Persons by Sex* tables](#)
- [Integration methods](#)
 - [Attribute integration](#)
 - [Geographic integration](#)
 1. [Nominally integrated tables](#)
 2. [Geographically standardized tables](#)
- [Table coverage](#)
 - [Topic coverage](#)
 - [Year coverage](#)
 - [Geographic coverage](#)
- [Table layouts](#)
- [Current table details](#)
- [Webinar](#)
- [Credits](#)
- [References](#)

WHAT ARE TIME SERIES TABLES?

Nominal integration

	A	B	C	D	E	F	G	H	I	J
1	GISJOIN	STATE	STATEA	BL1AA1970	BL1AA1980	BL1AA1990	BL1AA2000	BL1AA125	BL1AA125M	BL1AB1970
2	GIS Join Match Code	State Name	State Code	1970: Persons: Male ~ Never married	1980: Persons: Male ~ Never married	1990: Persons: Male ~ Never married	2000: Persons: Male ~ Never married	2008-2012: Persons: Male ~ Never married	2008-2012: Persons: Male ~ Never married	1970: Persons: Male ~ Now married
3	G010	Alabama	10	324572	375515	406140	444450	584355	4261	792229
4	G020	Alaska	20	38428	53423	67827	78955	105333	1532	69046
5	G040	Arizona	40	170463	286183	409976	581715	876661	5440	410438
6	G050	Arkansas	50	170171	200864	209851	245874	330745	3312	464000
7	G060	California	60	2102965	2938148	4034185	4343790	5778554	18439	4611973
8	G080	Colorado	80	230115	341985	373157	516816	678866	4145	510105
9	G090	Connecticut	90	306085	369471	412921	385888	496941	3768	706908
10	G100	Delaware	100	52624	67052	76997	87154	122851	1650	126479
11	G110	District Of Co	110	99908	112013	118273	112516	142162	1558	142605
12	G120	Florida	120	596651	950049	1336469	1702648	2553294	14356	1687636
13	G130	Georgia	130	446917	564696	716125	940487	1299191	7312	1050444
14	G150	Hawaii	150	104625	137448	152188	166715	205985	2060	169920
15	G160	Idaho	160	69395	86794	91380	128613	172169	2427	169553
16	G170	Illinois	170	1115952	1318480	1395167	1495795	1838840	9371	2542632
17	G180	Indiana	180	477592	541264	569459	643222	814989	5228	1222896
18	G190	Iowa	190	271540	301518	281081	318000	375129	2818	665781
19	G200	Kansas	200	223168	241362	244866	281338	345753	3010	542632
20	G210	Kentucky	210	318856	358353	361278	401465	518929	4039	757239
21	G220	Louisiana	220	370838	450684	464285	514633	633702	4170	793188
22	G230	Maine	230	97253	116576	126930	132473	163254	1650	227135
23	G240	Maryland	240	392646	501319	587368	610852	814952	4997	906860
24	G250	Massachusetts	250	622162	743825	832633	817954	981462	5728	1243732
25	G260	Michigan	260	872687	1036241	1078995	1159693	1352844	6714	2021198
26	G270	Minnesota	270	403762	484050	504483	591866	716441	4620	849440
27	G280	Mississippi	280	222569	252992	275422	319922	388559	3394	480663

Nominal integration

1	NHGISCODE	STATE	STATEFP	STATENH	COUNTY	COUNTYFP	COUNTYNH	TRACTA	AV0AA1970	AV0AA1980	AV0AA1990	AV0AA2000	AV0AA2010
2	NHGIS Integrated Geographic Unit Code	NHGIS Integrated State Name	FIPS State Code	NHGIS Integrated State Code	NHGIS Integrated County Name	FIPS County Code	NHGIS Integrated County Code	NHGIS Integrated Census Tract Code	1970: Persons: Total	1980: Persons: Total	1990: Persons: Total	2000: Persons: Total	2010: Persons: Total
73390	G3701190001400	North Carolina	37	370	Mecklenburg	119	1190	1400	3338	2799	2400	2656	2607
73391	G3701190001501	North Carolina	37	370	Mecklenburg	119	1190	1501	4660	6891	9260		
73392	G3701190001502	North Carolina	37	370	Mecklenburg	119	1190	1502	7506				
73393	G3701190001503	North Carolina	37	370	Mecklenburg	119	1190	1503		5047	7081	9191	
73394	G3701190001504	North Carolina	37	370	Mecklenburg	119	1190	1504		4728	4629	4806	6401
73395	G3701190001505	North Carolina	37	370	Mecklenburg	119	1190	1505				2906	3678
73396	G3701190001506	North Carolina	37	370	Mecklenburg	119	1190	1506				6423	
73397	G3701190001507	North Carolina	37	370	Mecklenburg	119	1190	1507					4004
73398	G3701190001508	North Carolina	37	370	Mecklenburg	119	1190	1508					6061
73399	G3701190001509	North Carolina	37	370	Mecklenburg	119	1190	1509					2976
73400	G3701190001510	North Carolina	37	370	Mecklenburg	119	1190	1510					3047
73401	G3701190001601	North Carolina	37	370	Mecklenburg	119	1190	1601	7408				
73402	G3701190001602	North Carolina	37	370	Mecklenburg	119	1190	1602	5815	5401	6735	8346	
73403	G3701190001603	North Carolina	37	370	Mecklenburg	119	1190	1603		3351	3675	4082	4598
73404	G3701190001604	North Carolina	37	370	Mecklenburg	119	1190	1604		4028	6191	6993	
73405	G3701190001605	North Carolina	37	370	Mecklenburg	119	1190	1605					1776
73406	G3701190001606	North Carolina	37	370	Mecklenburg	119	1190	1606					4295
73407	G3701190001607	North Carolina	37	370	Mecklenburg	119	1190	1607					2613
73408	G3701190001608	North Carolina	37	370	Mecklenburg	119	1190	1608					3933
73409	G3701190001609	North Carolina	37	370	Mecklenburg	119	1190	1609					3168
73410	G3701190001700	North Carolina	37	370	Mecklenburg	119	1190	1700	6784	7399			
73411	G3701190001701	North Carolina	37	370	Mecklenburg	119	1190	1701				4111	3749
73412	G3701190001702	North Carolina	37	370	Mecklenburg	119	1190	1702				5151	4881
73413	G3701190001798	North Carolina	37	370	Mecklenburg	119	1190	1798			7840		
73414	G3701190001800	North Carolina	37	370	Mecklenburg	119	1190	1800	5485	4031		4380	

Geographic standardization

1	A	B	C	D	E	F	G	H	I	J	K	L	M	N
1	GISJOIN	GEOYEAR	STATE	STATEA	COUNTY	COUNTYA	TRACTA	CL8AA199	CL8AA199	CL8AA199	CL8AA200	CL8AA200	CL8AA200	CL8AA2010
2	GIS Join Match Code	Geography Year	State Name	State Code	County Name	County Code	Census Tract Code	1990: Persons: Total	1990: Lower bound: Total	1990: Upper bound: Total	2000: Persons: Total	2000: Lower bound: Total	2000: Upper bound: Total	2010: Persons: Total
49315	G3701190001400	2010	North Carolina	37	Mecklenburg Co	119	1400	2389.68	2366	2391	2652.31	2640	2653	2607
49316	G3701190001504	2010	North Carolina	37	Mecklenburg Co	119	1504	4629	4629	4629	4806	4806	4806	6401
49317	G3701190001505	2010	North Carolina	37	Mecklenburg Co	119	1505	2901	2901	2901	2906	2906	2906	3678
49318	G3701190001507	2010	North Carolina	37	Mecklenburg Co	119	1507	3419	3419	3419	4791	4791	4791	4004
49319	G3701190001508	2010	North Carolina	37	Mecklenburg Co	119	1508	3662	3662	3662	4400	4400	4400	6061
49320	G3701190001509	2010	North Carolina	37	Mecklenburg Co	119	1509	3213	3213	3213	3229	3229	3229	2976
49321	G3701190001510	2010	North Carolina	37	Mecklenburg Co	119	1510	3146.1	3146	3211	3194.36	3194	3367	3047
49322	G3701190001603	2010	North Carolina	37	Mecklenburg Co	119	1603	3660	3660	3660	4065	4065	4065	4598
49323	G3701190001605	2010	North Carolina	37	Mecklenburg Co	119	1605	1389	1389	1389	1978	1978	1978	1776
49324	G3701190001606	2010	North Carolina	37	Mecklenburg Co	119	1606	3822	3822	3822	4154	4154	4154	4295
49325	G3701190001607	2010	North Carolina	37	Mecklenburg Co	119	1607	1524	1524	1524	2214	2214	2214	2613
49326	G3701190001608	2010	North Carolina	37	Mecklenburg Co	119	1608	3872	3872	3872	4321	4321	4321	3933
49327	G3701190001609	2010	North Carolina	37	Mecklenburg Co	119	1609	2251.16	1687	2334	2445.55	2137	2635	3168
49328	G3701190001701	2010	North Carolina	37	Mecklenburg Co	119	1701	3303	3303	3303	4111	4111	4111	3749
49329	G3701190001702	2010	North Carolina	37	Mecklenburg Co	119	1702	4537	4537	4537	5151	5151	5151	4881
49330	G3701190001801	2010	North Carolina	37	Mecklenburg Co	119	1801	1813.95	1349	1814	1706.96	1702	1707	1249
49331	G3701190001802	2010	North Carolina	37	Mecklenburg Co	119	1802	2775	2775	2775	2673	2673	2673	2892
49332	G3701190001910	2010	North Carolina	37	Mecklenburg Co	119	1910	4277	4277	4277	4614	4614	4614	5117
49333	G3701190001911	2010	North Carolina	37	Mecklenburg Co	119	1911	4613	4613	4613	5041	5041	5041	5441
49334	G3701190001912	2010	North Carolina	37	Mecklenburg Co	119	1912	5096.84	5014	5661	5506.45	5317	5815	6565
49335	G3701190001914	2010	North Carolina	37	Mecklenburg Co	119	1914	3295	3295	3295	3965	3965	3965	3485
49336	G3701190001915	2010	North Carolina	37	Mecklenburg Co	119	1915	4403	4403	4403	5460	5460	5460	6293
49337	G3701190001916	2010	North Carolina	37	Mecklenburg Co	119	1916	3003.8	2465	3050	3005.23	2508	3009	3725
49338	G3701190001917	2010	North Carolina	37	Mecklenburg Co	119	1917	3050.2	3004	3589	3294.77	3291	3792	3567
49339	G3701190001918	2010	North Carolina	37	Mecklenburg Co	119	1918	2842.4	698	3700	3129	3129	3129	3527
49340	G3701190001919	2010	North Carolina	37	Mecklenburg Co	119	1919	3243.6	2386	5388	3837	3837	3837	3379

Geographically standardized time series

- 1990–2020 data for 2010 census units
- 10 geographic levels: states, counties, tracts, block groups, county subdivisions, places, congressional districts, CBSAs, urban areas, ZCTAs
- ~1,600 time series in 111 tables
- “Short-form” counts only
 - Race, ethnicity, age, sex, household size & relationships, housing occupancy & tenure
 - *Not* income, education, employment, ...

Nominally integrated time series

- ~5,700 time series in 273 tables
 - Including:* marital status, nativity & place of birth, education, employment, means of transportation, travel time, income, poverty
- 8 geographic levels:
 - nation, regions, divisions, states, counties, tracts, county subdivisions, places
- Years mainly in 1970-2020 range
 - *Total Population* back to 1790 & *Persons by Sex* back to 1820
 - “Long-form” tables use ACS 2008-2012 & 2015-2019

Crosswalk Availability by Geographic Levels and Years

Source Zones	Target Zones	1990 to 2010	2000 to 2010	2010 to 2020	2020 to 2010
Blocks	Blocks	X	X	X	X
Block Group Parts	Block Groups	X	X		
Block Group Parts	Census Tracts	X	X		
Block Group Parts	Counties	X	X		
Block Groups	Block Groups			X	X
Block Groups	Census Tracts			X	X
Block Groups	Counties			X	X

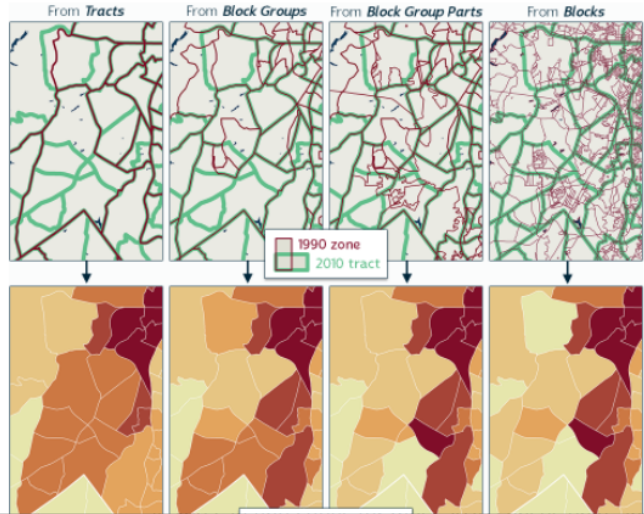
- [Citation and Use](#)
- [References](#)

Why It's Best To Start Small

To transform summary data from one census's geographic units to another's, it's important to start from the *lowest possible level*.

Let's say you'd like "harmonized tract data": multiple years of census tract data for spatially consistent tracts. So you obtained 1990, 2000, 2010, and 2020 tract data, and now you'd like to use a tract crosswalk to standardize the boundaries. But there are lots of data available for units smaller than tracts, and those smaller units fit much better within other years' tracts, so *why not start with data from the smaller units?* Doing so is consistently more accurate, and sometimes *much more*.

For example, there are thousands of cases where a single 1990 census tract corresponds to multiple 2010 tracts. This is especially common in fast-growing areas on the outskirts of cities, as in [Figure 1](#). To tabulate 1990 data for the 2010 tracts in these cases, starting from tract counts requires *disaggregating* counts from the larger 1990 tracts down to their component parts, which can result in substantial errors. Disaggregation models commonly assume that population characteristics are uniformly distributed within source zones, resulting in inaccurately uniform distributions among the target zones. This is evident in the tract-based estimates of the 1990 Black population distribution in [Figure 1](#), which indicate that this area was moderately well integrated.



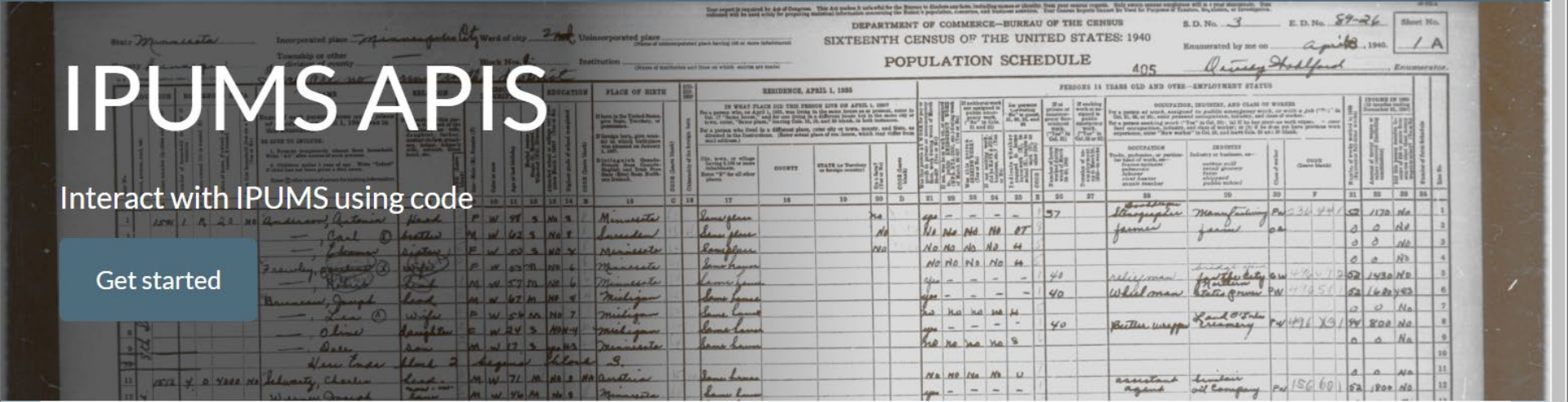
KEY RESOURCES

API & ipumsr

IPUMS APIS

Interact with IPUMS using code

Get started



OUR DATA, YOUR WAY!

Now you can interact with IPUMS data products programmatically! IPUMS APIs allow you to explore and retrieve IPUMS data in a whole new way. You can automate and integrate IPUMS data into your own tools and workflows.

Our first public APIs, the IPUMS Metadata and Data Extract APIs, allow you to submit a JSON request to describe the data you want, monitor our progress building your data extract, and download your data when it is ready. Currently it supports IPUMS NHGIS data. IPUMS USA coming soon!

IPUMS API NEWS

December 17, 2019 - NHGIS Metadata and Data Extract APIs have reached v1.0!

October 30, 2019 - We've added shapefiles, extent selection, year selection and breakdown values to the IPUMS NHGIS Metadata and Data Extract Beta APIs! The docs have all the info.

September 23, 2019 - We've added time series data and table-level metadata to the IPUMS NHGIS Metadata and Data Extract Beta APIs! See the docs for more

Introduction to `ipumsr` - IPUMS Data in R

Minnesota Population Center

2019-06-04

The `ipumsr` package allows you to read data from your IPUMS extract into R along with the associated metadata like variable labels, value labels and more. IPUMS is a great source of international census and survey data.

IPUMS provides census and survey data from around the world integrated across time and space. IPUMS integration and documentation makes it easy to study change, conduct comparative research, merge information across data types, and analyze individuals within family and community context. Data and services are available free of charge.

Learn more here: <https://ipums.org/what-is-ipums>

Additional Vignettes

This vignette gives the basic outline of the `ipumsr` package. Additional vignettes provide guidance on working with IPUMS value labels, IPUMS geographic data, and data from three specific IPUMS projects – CPS, NHGIS, and Terra.

To view any of these additional vignettes, run one the following commands after installing the `ipumsr` package:



NHGIS GEOMARKER NATIONAL HISTORICAL GIS

HOME | SELECT DATA | MY DATA | SUPPORT



IPUMS NHGIS

ABOUT

REGISTER

DONATE TO NHGIS

DATA

BROWSE AND SELECT DATA

DOWNLOAD OR REVISE MY DATA

API

SUPPLEMENTAL DATA

GEOGRAPHIC CROSSWALKS

ENVIRONMENTAL SUMMARIES

PRIVACY-PROTECTED DEMO DATA

SABINS SCHOOL AREAS

DOCUMENTATION

DATA AVAILABILITY

OVERVIEW OF DATASETS

TABULAR DATA SOURCES

TIME SERIES TABLES

GIS FILES

REVISION HISTORY

SUPPORT

FAQ

USER GUIDE

MAPPING OPTIONS

USER FORUM

USER GUIDE

WEBINARS

- [Intro to IPUMS NHGIS: Geographic U.S. Census Data from 1790 to the Present](#) - November 9, 2018
- [NHGIS Time Series Tables: Geographic Census Data Harmonized Across Time](#) - November 20, 2019

VIDEO TUTORIALS

1. [NHGIS Data Finder](#) (general overview)
2. [NHGIS Filter Options](#)
3. [NHGIS Data Layout Options](#)
4. [Join NHGIS Spatial and Census Data](#)

MAPPING OPTIONS

FOR DEVELOPERS & R USERS

- The [ipumsr](#) package facilitates using IPUMS data, including NHGIS data, in R.
- The [IPUMS Developer Portal](#) explains how to access the NHGIS API with examples for Python or R.



NHGIS GEOMARKER NATIONAL HISTORICAL GIS

HOME | SELECT DATA | MY DATA | SUPPORT



IPUMS NHGIS ABOUT REGISTER DONATE TO NHGIS

DATA BROWSE AND SELECT DATA DOWNLOAD OR REVISE MY DATA

DOWNLOAD U.S. CENSUS DATA TABLES & MAPPING FILES

The National Historical Geographic Information System (NHGIS) provides easy access to summary tables and time series of population, housing, agriculture, and economic data, along with GIS-compatible boundary files, for years from 1790 through the present and for all levels of U.S. census geography, including states, counties, tracts, and blocks. Read more.

REVISION HISTORY

SUPPORT

- FAQ USER GUIDE USER FORUM

RESEARCH

- CITING IPUMS NHGIS IPUMS BIBLIOGRAPHY

nhgis@umn.edu

NHGIS NEWS

Twitter: @nhgis


- 2016-2020 ACS 5-YEAR SUMMARY FILE NOW AVAILABLE | GEOGRAPHIC CROSSWALKS FOR 2010-2020 ACS DATA | PRIVACY-PROTECTED 2010 CENSUS DEMONSTRATION DATA ON AGE, SEX, RACE, ETHNICITY, AND MORE | FIRST RELEASE OF 1980 BLOCK BOUNDARIES | TIME SERIES EXTENDED TO 2020 CENSUS & 2019 ACS | BLOG POST: BETTER MAPS WITH CENSUS CENTERS OF POPULATION | 2020 CENSUS REDISTRICTING DATA & GIS FILES | PRIVACY-PROTECTED 2010 CENSUS DEMONSTRATION DATA USING 2020 PRODUCTION SETTINGS | CROSSWALKS BETWEEN 2010 & 2020 CENSUS BLOCKS | NHGIS API | MORE NEWS..

IPUMS

- ABOUT ▾
- PROJECTS ▾
- SUPPORT ▾
- IMPACT ▾
- BLOG [↗](#)

- USER FORUM [↗](#)
- BIG MICRODATA NETWORK
- TUTORIALS
- IPUMS DATA TRAINING EXERCISES
- TEACHING RESOURCES
- CONTACT US

IPUMS provides census and survey data from around the world integrated across time and geography to help you conduct comparative research, merge information across data types, and analyze individual-level data. All data is available free of charge.



U.S. Census and American Community Survey microdata from 1850 to the present. [Learn More](#)

VISIT SITE



Current Population Survey microdata including basic monthly surveys and supplements from 1962 to the present. [Learn More](#)

VISIT SITE

World's largest collection of census microdata covering over 100 countries, contemporary and historical. [Learn More](#)

VISIT SITE


Contextualizing Work and Health across the Life Course

REGISTER




Health survey data for Africa and Asia, including harmonized data collections for [DHS](#) [↗](#) and [PMA](#) [↗](#). [Learn More](#)

VISIT SITE



Tabular U.S. Census data and GIS boundary files from 1790 to the present. [Learn More](#)

VISIT SITE



Tabular and GIS data from population, housing, and agricultural censuses around the world. [Learn More](#)
Find additional spatial population & environmental data in [IPUMS Terra](#) [↗](#).

VISIT SITE

CENSUS BUREAU PLANS MAJOR CHANGES TO PUBLIC DATA

New data may be unusable for research and planning

LEARN MORE

CALENDAR

Webinar: Did The COVID-19

Acknowledgments

Eunice Kennedy Shriver National Institute of Child
Health & Human Development

[NIH-R01HD057929,
NIH-R24HD041023]

National Science Foundation

[SES-1324875]