

# Three-Phase Longitudinal Family Planning Data from PMA

October 24<sup>th</sup>, 2023

9am – 10:30am Central Time

# Webinar Outline

- Introduction to IPUMS PMA
- Sample Design of the Longitudinal Panel
- How to create a data file online
- Understanding the data format
- Longitudinal analysis examples

# Zoom Logistics

- **Webinar is being recorded & will be posted**
- Will post written **Q&A document** and **Stata/R code** following webinar
- **Real-time closed captions** are being generated
  - Turn on/off by clicking “CC” button in Zoom controls
- Send **questions about Zoom directly to host** (IPUMS)
- Submit **content questions using Q&A tool**



# What is IPUMS?

IPUMS provides census and survey data from around the world integrated across time and space. IPUMS **integration and documentation** makes it easy to study change, conduct comparative research, merge information across data types, and analyze individuals within family and community context. Data and services available **free of charge**.

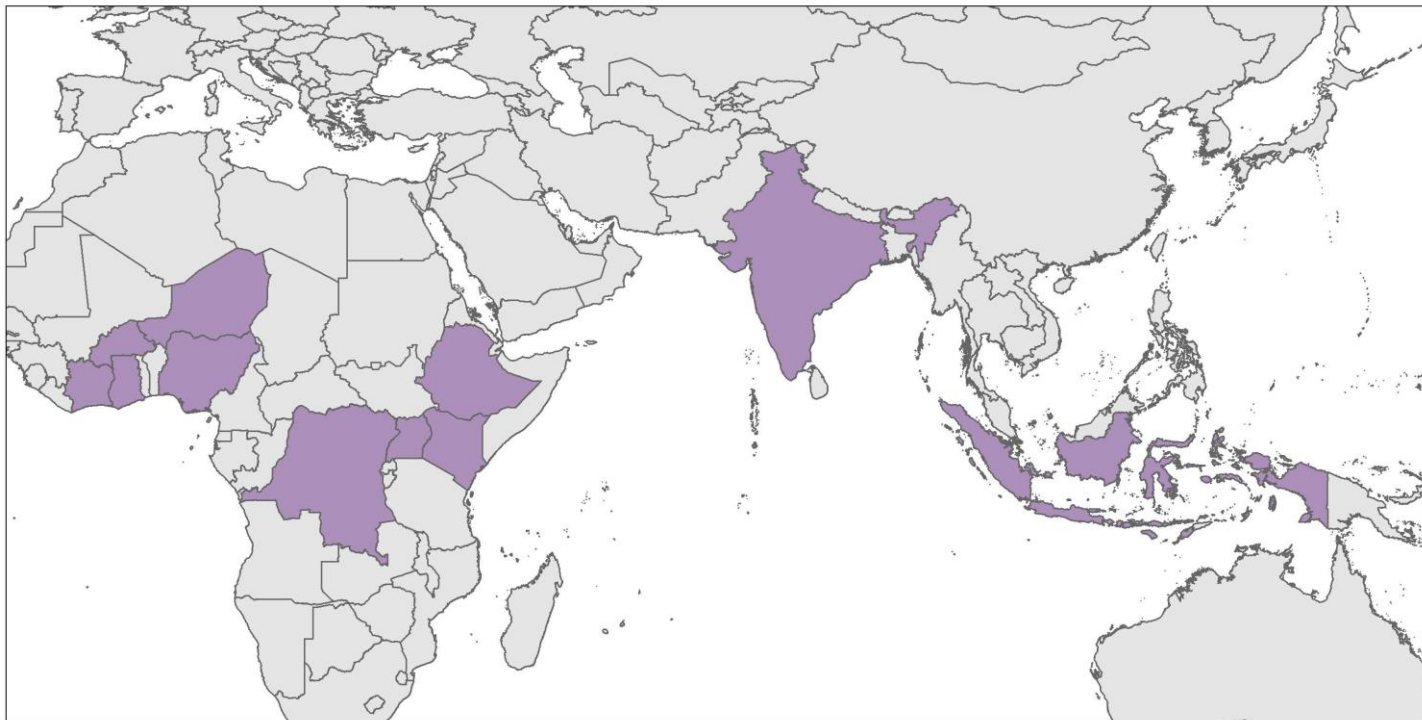


# Performance Monitoring for Action

- High frequency, recent surveys on **family planning, sexual and reproductive health** since 2013
- Currently 9 countries in **Africa and Asia**
- Designed to monitor progress towards FP2020 goals
- Data collected by a team at Johns Hopkins University
- Funded by the Bill & Melinda Gates Foundation

**200+ SAMPLES · 9000+ VARIABLES · OVER 2 MILLION RECORDS**

# PMA Countries





# Survey types

- Household and female surveys
- Service delivery points
- Maternal and Newborn Health panel
- Client exit interview
- Nutrition

# Sample Design - Core

- Multistage stratified cluster sampling
- Small areas were randomly selected (EA)
  - ~200 households
- Households are randomly selected (~35 per EA)
  - Household survey
  - Survey for all females 15 to 49

# IPUMS PMA

- Harmonize codes and variable names
- Document variables
- Disseminate custom data files in multiple formats
- Add calculated fields
- Link longitudinal records

# DATA ANALYSIS HUB

March 22, 2023  
Matt Gunther

## ABORTION INCIDENCE WITH THIRD PARTY REPORTING

[DATA ANALYSIS](#)
[ABORTION](#)
[MEASUREMENT](#)

Recent PMA surveys from Côte d'Ivoire and Nigeria include questions about the abortion experiences of both respondents and other women of reproductive age with whom they share personal information.

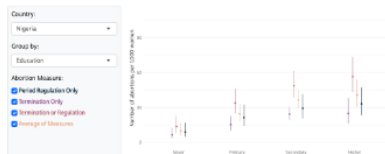
Feb. 15, 2023  
Matt Gunther  
Devon Kristiansen

## COMPARING MEASURES OF ABORTION INCIDENCE WITH A SHINY DASHBOARD

[DATA ANALYSIS](#)
[ABORTION](#)
[SHINY](#)
[DPLYR](#)

New abortion data from PMA includes women who reported doing something to remove a pregnancy, or to regulate a late period because of a suspected pregnancy.

ESTIMATED ONE-YEAR ABORTION INCIDENCE



### CATEGORIES

[Articles \(52\)](#)
[Abortion \(3\)](#)
[ACLED \(1\)](#)
[across \(2\)](#)
[Agriculture \(1\)](#)
[Animation \(1\)](#)
[Armed Conflict \(1\)](#)
[Bar Charts \(2\)](#)
[bootstraps \(1\)](#)
[CHIRPS \(1\)](#)
[Client Exit Interviews \(6\)](#)
[Climate \(2\)](#)
[Cluster Sampling \(2\)](#)
[Codebook \(1\)](#)
[Contraceptive Calendar \(3\)](#)
[COVID-19 \(5\)](#)
[cowplot \(1\)](#)
[cur\\_data \(1\)](#)
[Data Analysis \(18\)](#)



# Overview of Panel Design

- **Open** panel of women of childbearing age over 3 years
- Contraceptive and fertility dynamics
- Overlapping contraceptive calendar
- Additional households sampled for cross-sectional subsample

# Panel membership

- All women aged 15-49 in sampled households
- Age out/age in
- Move out/move in

# Cross-section Subsample

Household attrition  $> 10\%$  in an EA



New households sampled



# Data Collection

	2019		2020												2021												2022												2023			
	N	D	J	F	M	A	M	J	J	A	S	O	N	D	J	F	M	A	M	J	J	A	S	O	N	D	J	F	M	A	M	J	J	A	S	O	N	D	J	F		
Burkina Faso			P1												P2													P3														
Cote d'Ivoire												P1												P2																	P3	
DRC			P1											P2														P3														
Rajasthan (India)											P1													P2																	P3	
Kenya	P1													P2													P3															
Niger															P1																										P3	
Nigeria			P1													P2												P3														
Uganda												P1																													P3	



Available on IPUMS!



Release in spring 2024!

# Lost to Follow-up

- Dwelling
  - replaced or destroyed
- Household
  - whole household moved out of study area
- Household Roster
  - woman moved out of study area or died
- Female
  - refused or was unavailable

# Types of Missing Data

- **Record linked (PMA created record in later Phase)**
  - Panel member found but not interviewed (RESULTLFQ)
  - Phase 2 or 3 data = NIU code
- **Record not linked (No record in later Phase)**
  - Phase 2 or 3 data = missing/blank/NA
- **New panel member**
  - Earlier phase data = missing/blank/NA
- **Household members**
- **Variables not available**

# CREATING A CUSTOM DATA FILE



4796138925877024972846961  
28625147020321437  
3154702034598  
92870203121  
347020392239634  
150203928948718289  
602034102572476566465  
5020342035217782352327  
7020395729385320457678953  
8020347386453202165983721  
902032521479165704181421539899  
9419829802034103634619730  
836169020347157394802034  
19702036309658802032  
6802031003621020387  
56302030203719  
72919020302032642  
38742910203431925  
5938724619020302031479254386

# IPUMS

# PMA

[PMA.IPUMS.ORG](http://PMA.IPUMS.ORG)

# Long Form

	fqinstid	phase	resultfq	age	mcp
35786	uuid:8c7ba613-c115-444f-9330-bf4d6f59a094	phase 1	completed	40	no
35787	uuid:8c7ba613-c115-444f-9330-bf4d6f59a094	phase 2	completed	41	no
35788	uuid:8c7ba613-c115-444f-9330-bf4d6f59a094	phase 3	completed	42	no
35789	uuid:8c7d95b7-2baa-41e1-91e2-1553c76cbc00	phase 1	completed	27	yes
35790	uuid:8c802f69-a204-4a80-87a6-0054fa6fb792	phase 1	completed	25	no
35791	uuid:8c802f69-a204-4a80-87a6-0054fa6fb792	phase 2	completed	26	no
35792	uuid:8c802f69-a204-4a80-87a6-0054fa6fb792	phase 3	completed	27	no
35793	uuid:8c897895-9485-4e8b-9c64-67ce89543bd0	phase 2	completed	17	no resp...
35794	uuid:8c8a6552-e74f-462b-a734-cdb634d8ad88	phase 3	completed	21	no
35795	uuid:8c8b7bab-a751-40ad-97c1-72a471bc233c	phase 2	completed	19	no
35796	uuid:8c903129-c89b-4c94-b37d-b64e3bcb878b	phase 1	completed	46	no
35797	uuid:8c903129-c89b-4c94-b37d-b64e3bcb878b	phase 2	completed	47	no
35798	uuid:8c903129-c89b-4c94-b37d-b64e3bcb878b	phase 3	completed	48	no
35799	uuid:8c9a0cd0-2e14-4715-8a29-83d22d26ff4f	phase 1	completed	17	no
35800	uuid:8c9a0cd0-2e14-4715-8a29-83d22d26ff4f	phase 2	completed	18	no

# Wide Form

	fqinstid	age_1	age_2	age_3	mcp_1	mcp_2	mcp_3
23504	uuid:2e22ccbd-39b7-4c3b-9cf0-412908...	16	17	19	yes	no	yes
23505	uuid:7160b63a-58ed-44d6-a103-e636e...	20	21	22	no	no	no
23506	uuid:55fe71b7-987d-4df5-ab92-e60753...	28	29	30	no	no	yes
23507	uuid:c7e99601-df5c-4642-8dcc-c838ad...	42	43	43	no	no	no
23508	uuid:8b2445de-bc6c-48aa-8e06-67349...	19	20	.	no	no	.
23509	uuid:7e65aebf-521a-4745-9aee-5b779...	42	42	44	yes	yes	yes
23510	uuid:964e2534-a456-47e6-bffa-33e029...	23	24	24	no	no	no resp...
23511	uuid:e2e2c6e6-bab7-4467-89ca-f97ee7...	27	28	29	no	no	no
23512	uuid:ea5fee1e-c5e5-4f02-bb4c-4b4054...	48	48	.	no	no	.
23513	uuid:1fa22bd3-494b-4dd5-864f-231f2c...	40	41	42	yes	yes	yes
23514	uuid:dbe0cd0c-2fb2-47c4-a72d-d38128...	20	not inter...	niu (not ...	yes	not inter...	niu (not ...
23515	uuid:d669b0d0-3635-4346-a6f9-38b66...	21	22	23	no	no	no
23516	uuid:4034cec2-3d63-46f2-8f58-6d97f8f...	38	39	40	no	no	no
23517	uuid:dbf182d4-5864-4d78-a4d8-63077...	16	17	niu (not ...	no	no	niu (not ...
23518	uuid:61abda99-dab0-42ad-a216-2f39d...	47	48	49	no	yes	no
23519	uuid:759e232e-c77f-4770-bdb0-10ae1...	36	37	38	no	no	no





# LONGITUDINAL ANALYSIS

# Which weight to use?

- Cross sectional
  - Female level, normalized (**FQWEIGHT**)
  - Household level, normalized (**HQWEIGHT**)
  - De-normalized population-weighted (**POPWT**)

# Which weight to use?

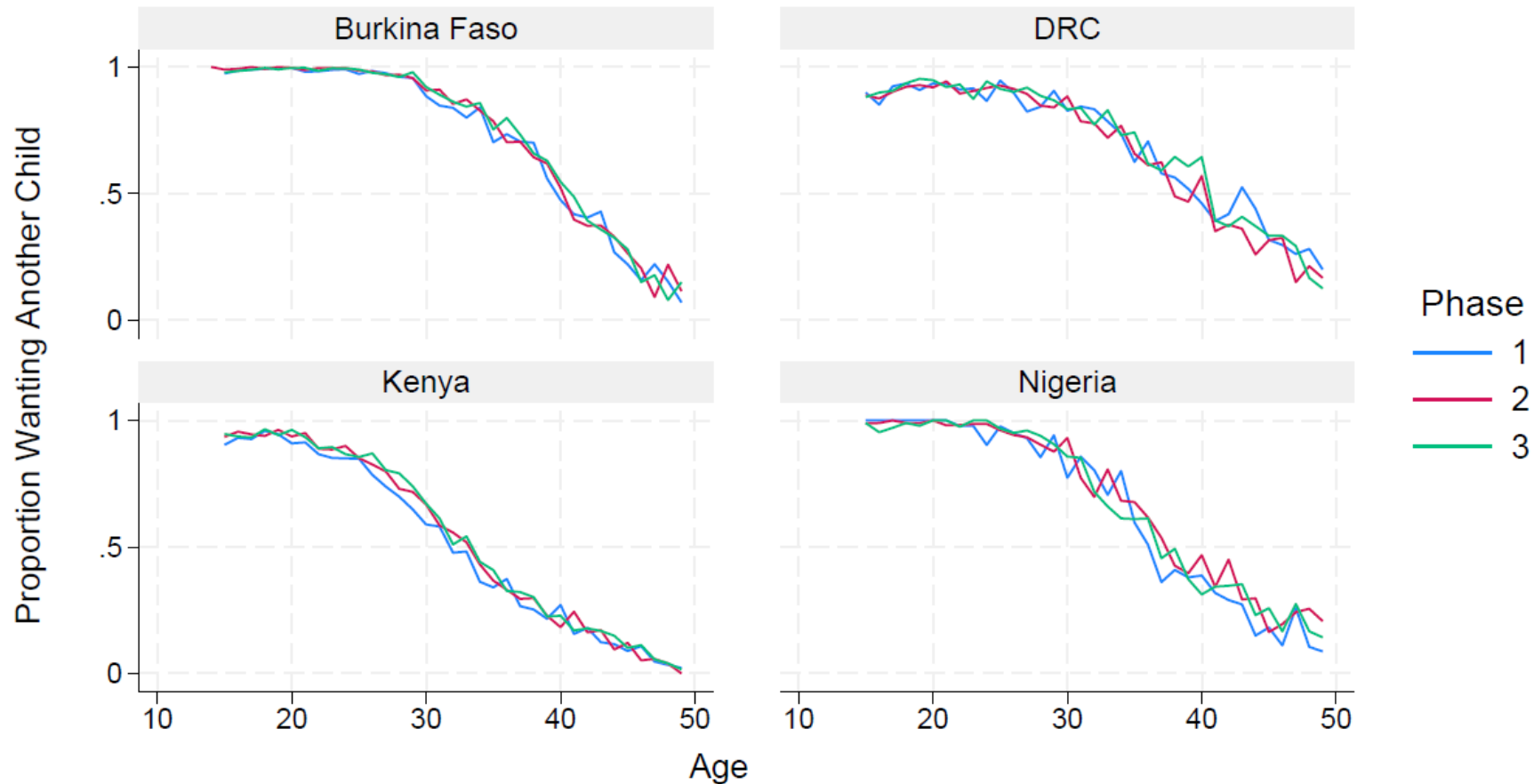
- Longitudinal, female level, normalized
  - **FULLPANELWEIGHT**: analyses using all 3 phases
  - **PANEL1\_2\_WEIGHT**: analyses using data from 1 and 2
  - **PANEL1\_3\_WEIGHT**: analyses using data from 1 and 3
  - **PANEL2\_3\_WEIGHT**: analyses using data from 2 and 3



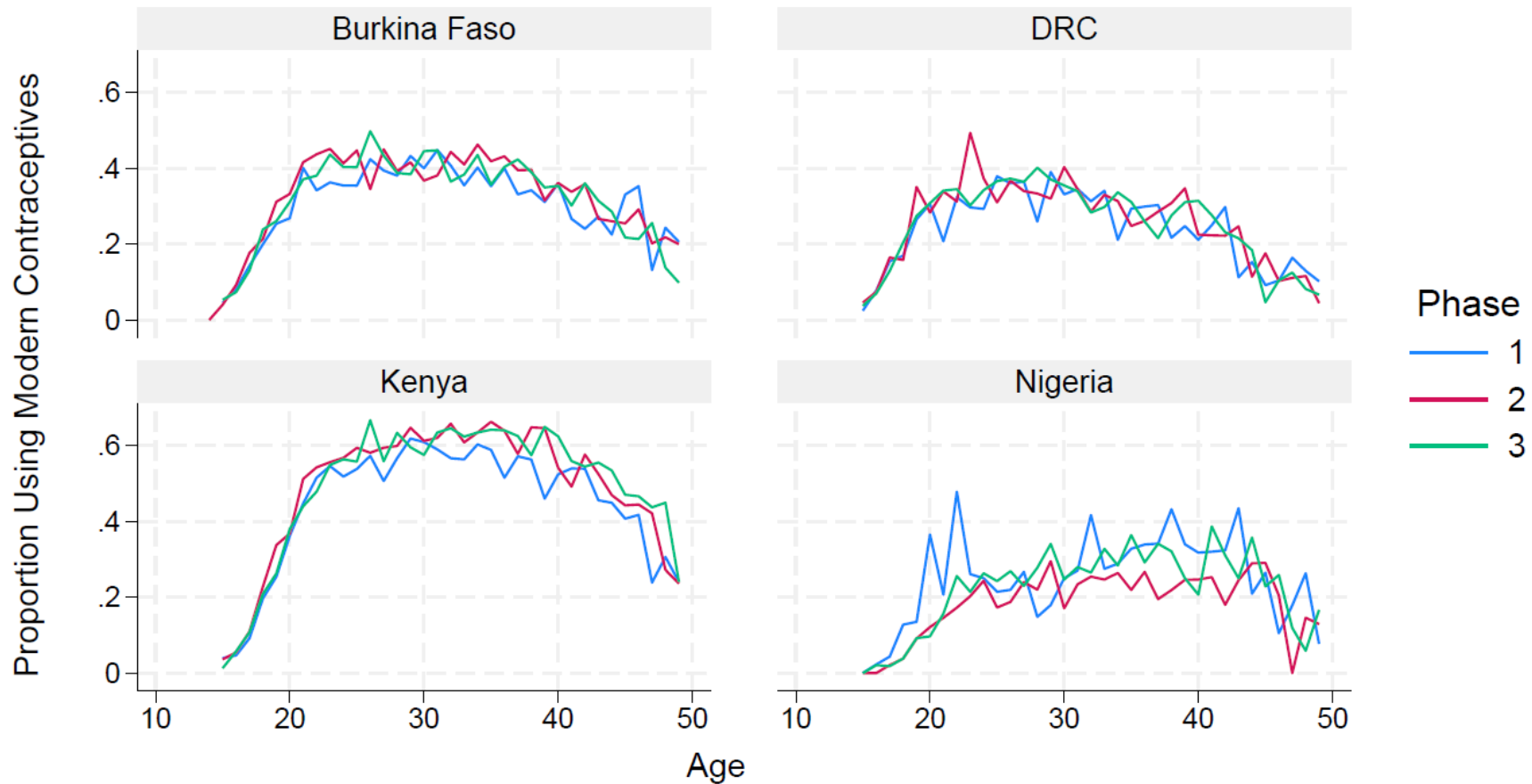
# Research questions

- ***Descriptive:*** do women's fertility preferences change between phases?
- ***Predictive:*** do fertility preferences predict contraceptive adoption?

# Proportion of Women Wanting Another Child by Age, Country and Phase

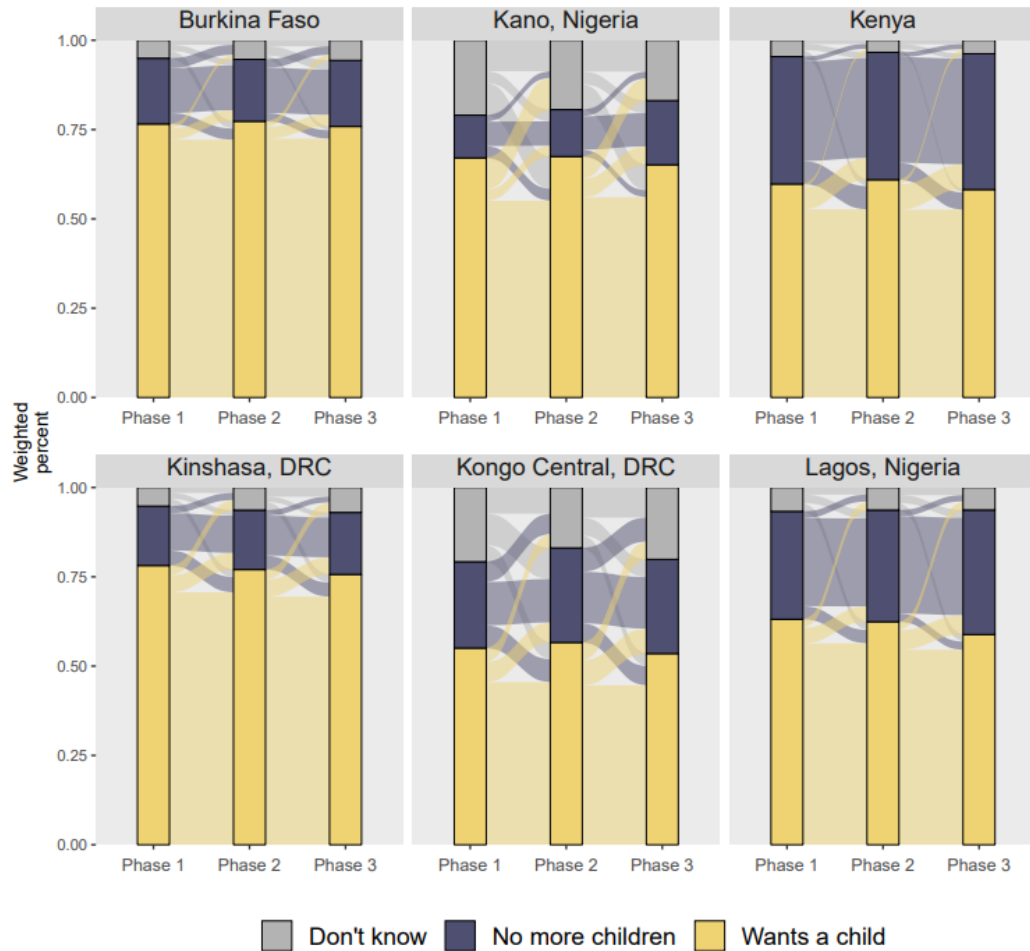


# Proportion of Women Using Modern Contraceptives by Age, Country and Phase



# Fertility preferences across three longitudinal phases

Four Sub-Saharan countries, 2019–2021





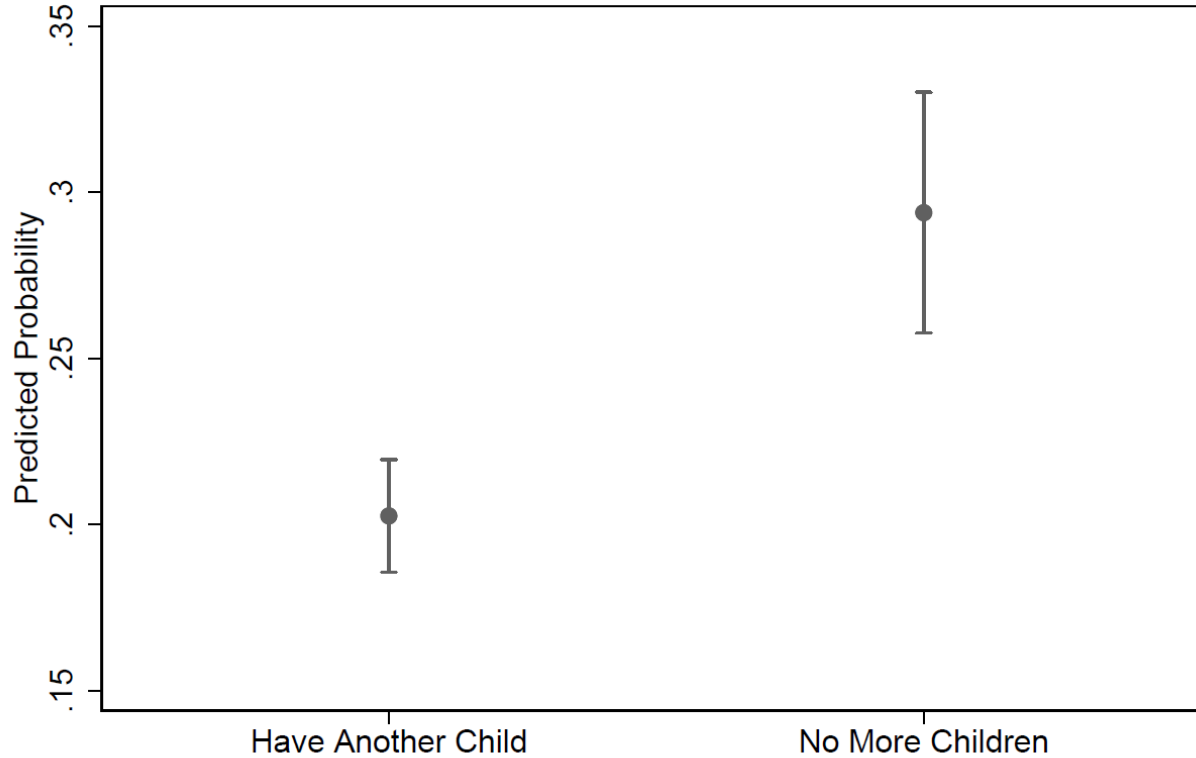
# Predictive Analyses

- Do fertility preference in earlier phases predict contraceptive adoption in later phases?
- **Denominator:** married women not using contraception at phase 1

# Predictive Analyses

- **Outcome:** modern contraceptive use (phase 3)
- **Predictor:** wants to have children (phase 1)
- **Controls:** age, education, household wealth score, country of residence (phase 1)
- **Weight variable:** PANEL1\_3\_WEIGHT

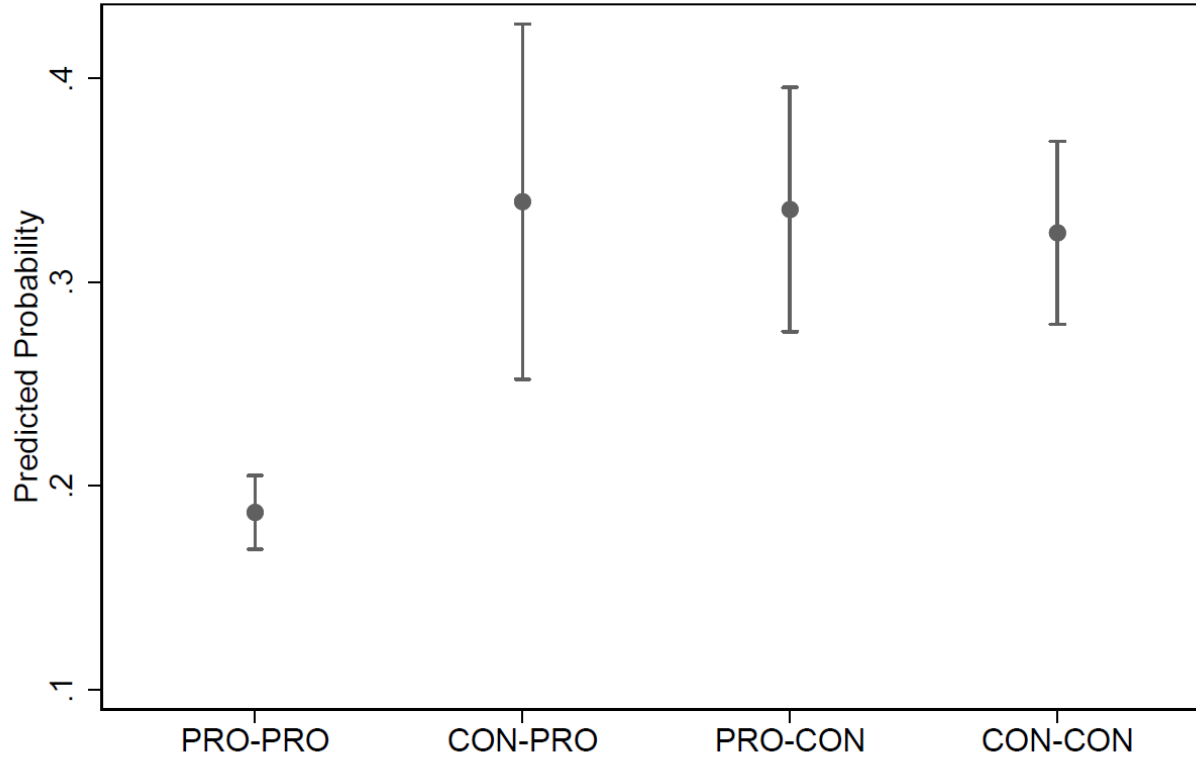
### Predicted Probability of Using Modern Contraception (Phase 3) by Fertility Preferences (Phase 1) (with 95% CI)



# Predictive Analyses

- **Follow-up question:** does the stability of fertility preference predict contraceptive adoption?
- **Weight variable:** FULLPANELWEIGHT

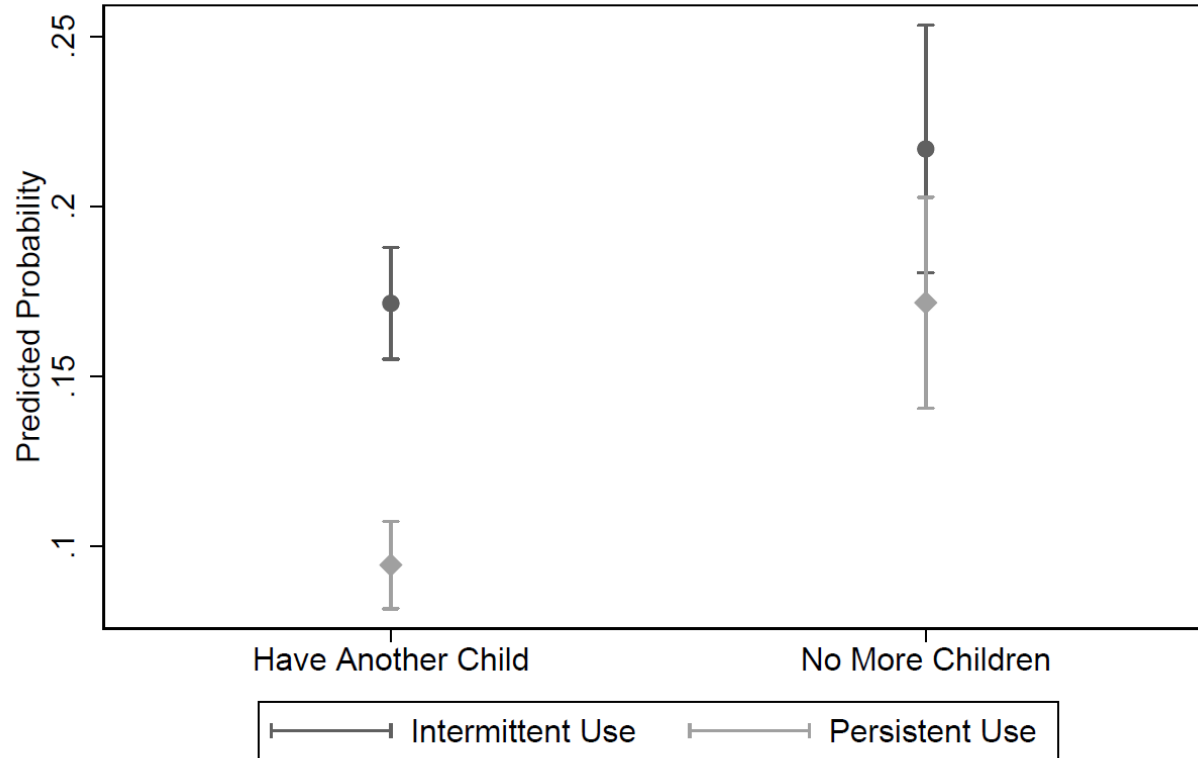
### Predicted Probability of Using Modern Contraception (Phase 3) by Fertility Preferences (Phases 1 and 2) (with 95% CI)



# Predictive analyses

- **Follow-up question:** do fertility preferences predict whether contraceptive adoption is temporary or persistent?
- **Weight variable:** FULLPANELWEIGHT

# Predicted Probability of Using Modern Contraception (Phases 2 and 3) by Fertility Preferences (Phase 1) (with 95% CI)



# Further ideas

Investigate interactions of other characteristics on the association between fertility preferences and contraceptive adoption

Lots of potential for research!



User Support

**IPUMS@UMN.EDU**

Other Resources

**Z.UMN.EDU/PMA\_SUPPORT**

**Z.UMN.EDU/PMA\_LONG**

**IPUMS.ORG**

Webinar recording, Stata/R code, and  
Q&A will be posted at  
**[ipums.org/support/tutorials](https://ipums.org/support/tutorials)**

Thanks for listening!

**ANY QUESTIONS?**