

# BROCK UNIVERSITY MAP LIBRARY

## Tutorial for Historic Welland Canals: Virtual Tour


### Accessing the project:

1. Load the Map Library website <http://www.brocku.ca/library/collections/maplibrary>
2. Under Digital Exhibits, link to the Welland Canals Exhibit page
3. Click on **download Welland Canals KMZ file**, and depending on your browser a prompt will offer to open the file automatically in Google Earth. Choose Open!

The WC project will appear in the map view, and its contents listed in the **Temporary Places** folder under the **Places** legend.

(See Appendix for Google Earth basic navigation)

### Project content:


- Expand the contents of the project using the expand box . The routes of the canals (including the 4<sup>th</sup>) are represented by the red lines.

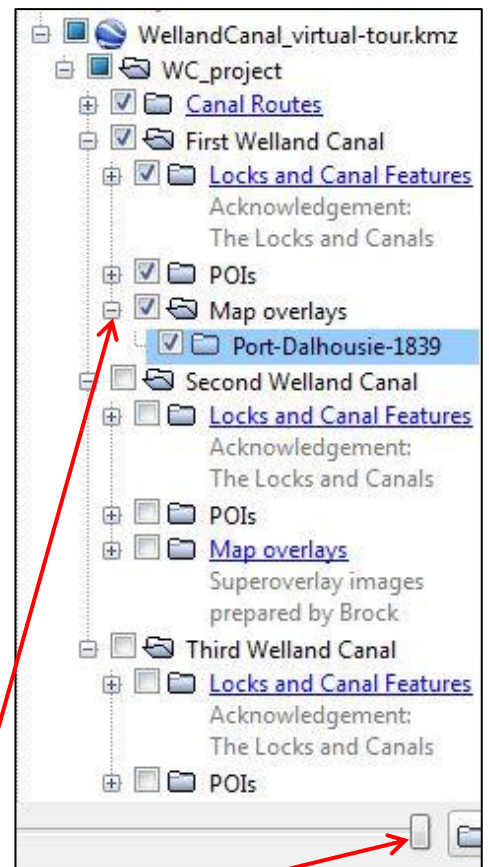
There is a folder for each of the 3 historic canals. Each canal has sub-folders (also expandable) containing:

- i. Locks and Canal features – locations of locks are identified by a round colour placemark: 1<sup>st</sup> canal – yellow; 2<sup>nd</sup> canal – red; 3<sup>rd</sup> canal – green.
  - ii. POI (points of interest) – locations of industries and other interest are identified by a coloured square placemark using the same colour scheme.
  - iii. Map overlays – maps and air photos showing the area during the canal era must be checked in the contents list to view.
- Each placemark has accompanying description and photos when selected in the map view. Or, double-click a feature from the contents list to zoom to its location.

### Touring the Project – some highlights:

#### **First Canal** (1829 – 1845) – yellow placemarks

- Display only the First Canal content; de-select Second and Third.
- Expand the Map overlays and select the Port Dalhousie map so it is highlighted blue.
- Zoom closer to this area, and use the transparency slider to make the map slightly transparent.  
Notice the significant landscape changes, especially along the shoreline!
- Remove the map from the view and select the historical imagery tool  from the top tool bar. Use the slider to display the 1934 imagery.  
Notice the ships in the inner harbour; the shadow of the submerged Lock 1 piers in Lake Ontario; the patchwork of orchards that is now entirely residential area.
- Pan to the downtown area. The route of the 1<sup>st</sup> and 2<sup>nd</sup> canal is visible from the imagery as it meanders through the city – now much is filled by a parking lot and highway 406.
- Other features to view along the 1<sup>st</sup> canal are the Shickluna shipyard; Lock 6; Lock 24.
- Click on these placemarks to view historical photos and commentary about these features.
- De-select all First canal content and 1934 imagery.




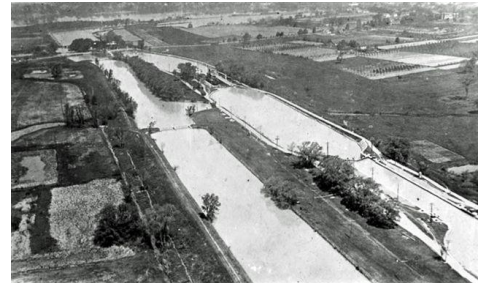
### **Second Canal** (1845 – 1881) – red placemarks

- Select the Locks and Features, and POI's only from the contents list.
- From the map view, click the Muir Bros Drydock placemark. Several photos illustrate its history, as well as an audio clip can be played of an interview with a past Muir Bros worker.
- Pan to the downtown area and open the Hutchinson Mill placemark. Many mills and industry were located along this stretch of the canal where fast moving water was a source of power.
- View the content of Lock 16 placemark.
- Turn on the Map overlays of the 2<sup>nd</sup> canal. This series of maps was instrumental in locating the old locks and industry.
- Use the transparency tool to compare the current landscape.
- For fun...view the video at Martindale Pond that illustrates its recreational use!



### **Third Canal** (1881 – 1932) – green placemarks

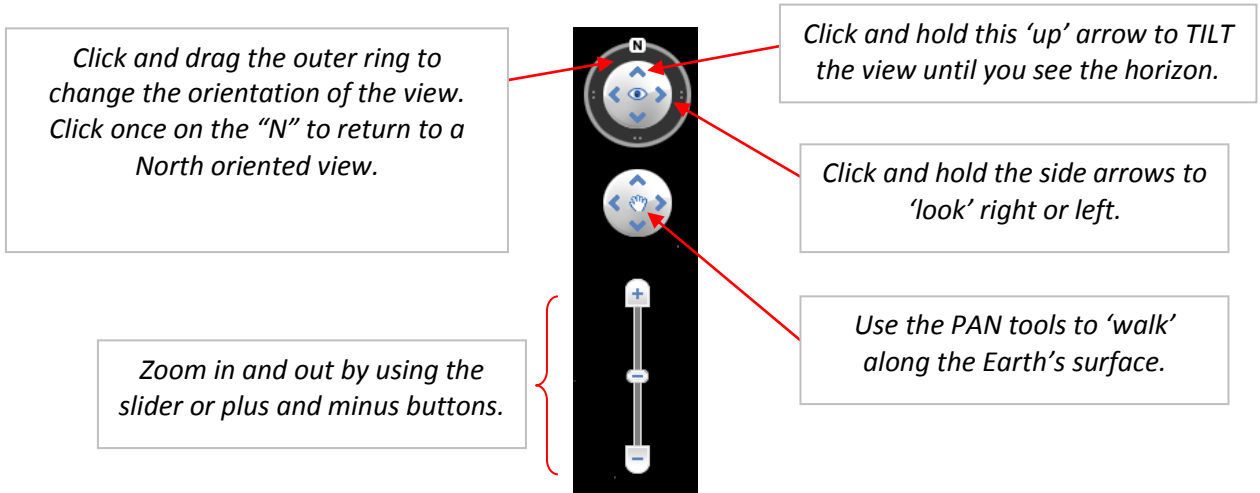
- Select all the Third canal content.  
Notice the route of the Third cuts a straight diagonal path through St. Catharines leaving a scar on the current landscape.
- Pan to the area of Lock 11 – 22. All of these locks are still intact and accessible to view. This area is also known as the Welland Canals Parklands, but is owned by the Seaway Authority.
- Open the West tunnel placemark; then compare to the East tunnel placemark.
- Again, display the 1934 imagery using .
- Zoom to Lock 21 and notice the boat blocking the north gates.
- Open the placemark to view the remnants.
- There is also an interesting story about Lock 24!



This project continues to be a work in progress requiring additional content. Pictures of canal features, old and new, are welcome.

Colleen Beard [cbeard@brocku.ca](mailto:cbeard@brocku.ca)

Appendix: Google Earth Basic Navigation



January 2013