

Historic Welland Canals Corridor – visualizing the past!

Building on Niagara Region's GIS data of canal paths and points of interest, a visualization tool is being created that merges old documents with new technology. A combination of historic air photos, maps, and photos utilizes Google Earth to provide an interactive tool for exploring the historic canals.

Colleen Beard cbeard@brocku.ca



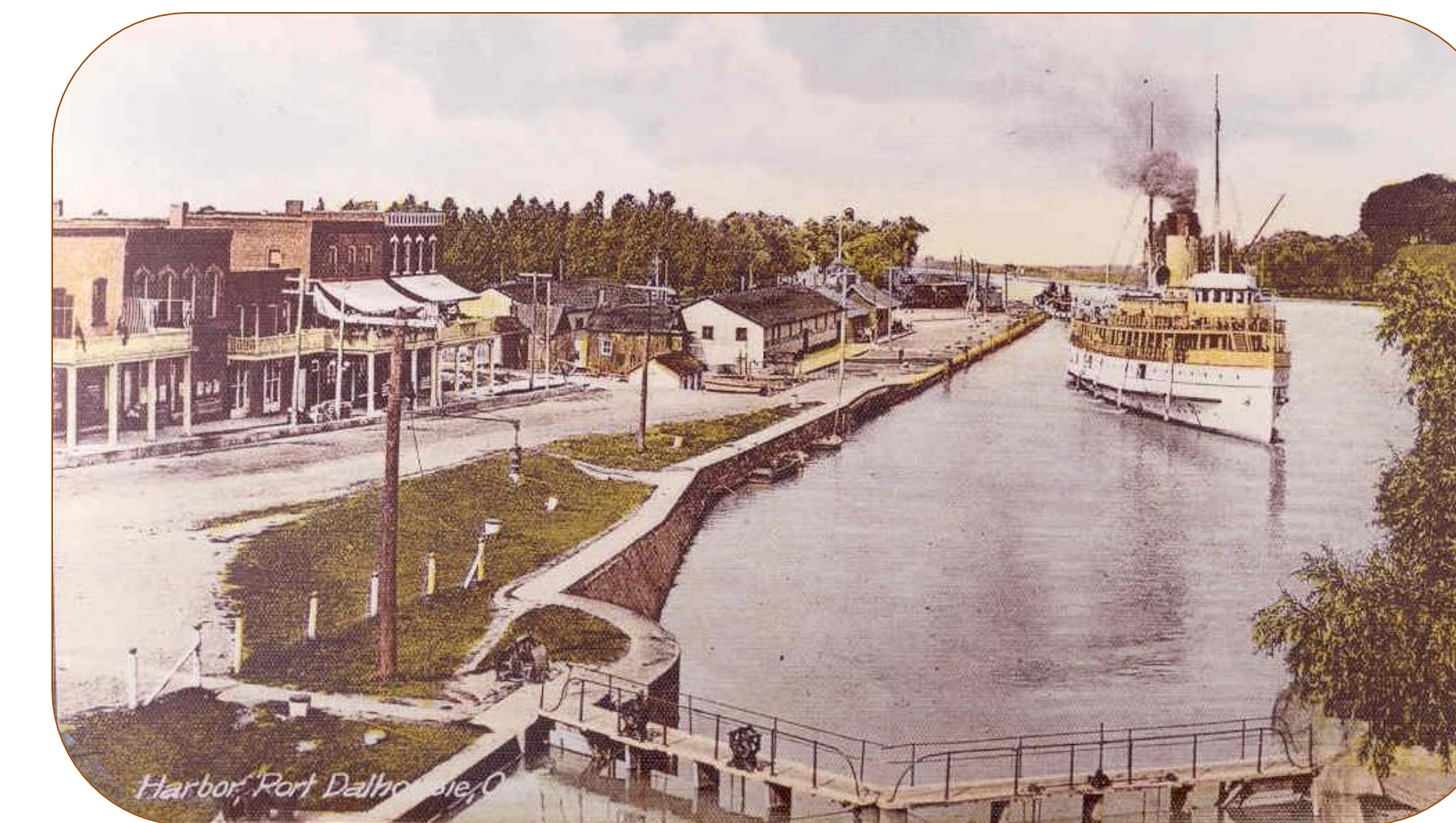
Map 1855

1839 map overlay of Port Dalhousie shows the First Welland Canal entrance; significant shoreline evolution.

1934 air photo overlay reveals underwater remnants of the canal entrance piers; ship activity at Muir Shipbuilding, Port Dalhousie.



Muir

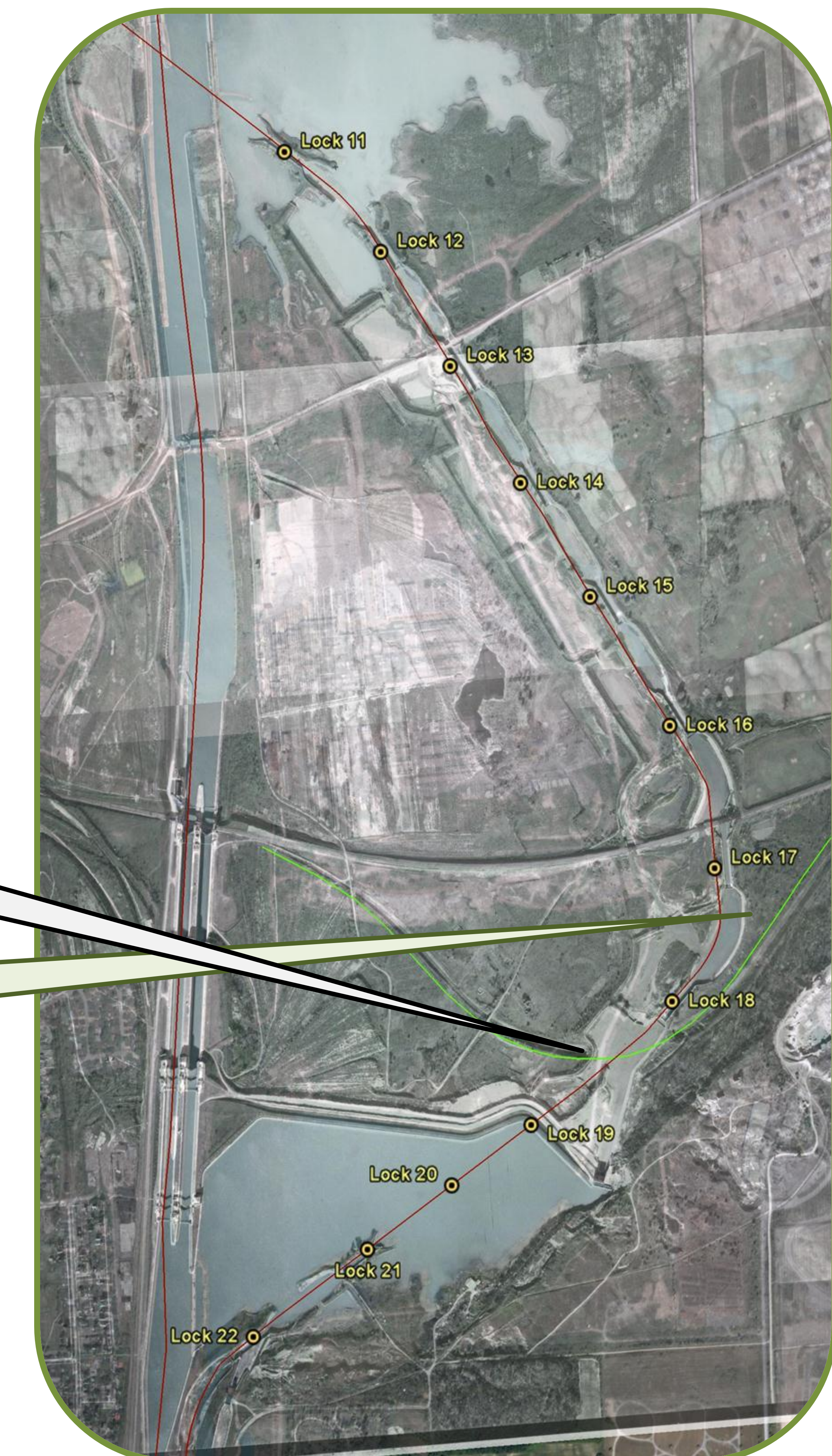


Lock One of the Second Canal, Port Dalhousie, postcard c.1860



Entrance to the Grand Trunk Rail Tunnel, photo c1888 (aka Blue Ghost Tunnel)

1934 air photo overlay of the Third Welland Canal parklands. Spectacular views of locks 11-22. Area of potential tourism development!



Lock 3, Second Canal St. Catharines, c1845

View of the Third Canal looking north to Lock 17 and the iron bridge, postcard c1880

