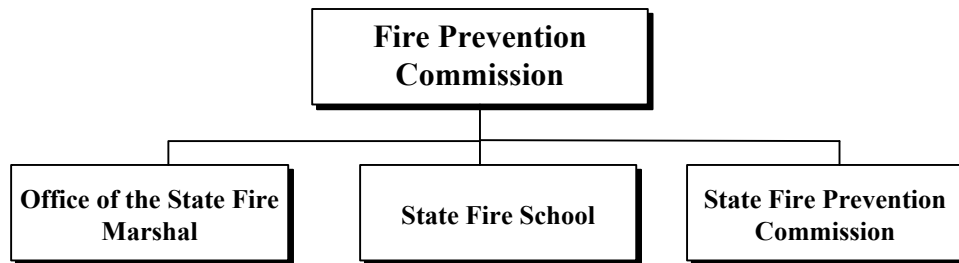
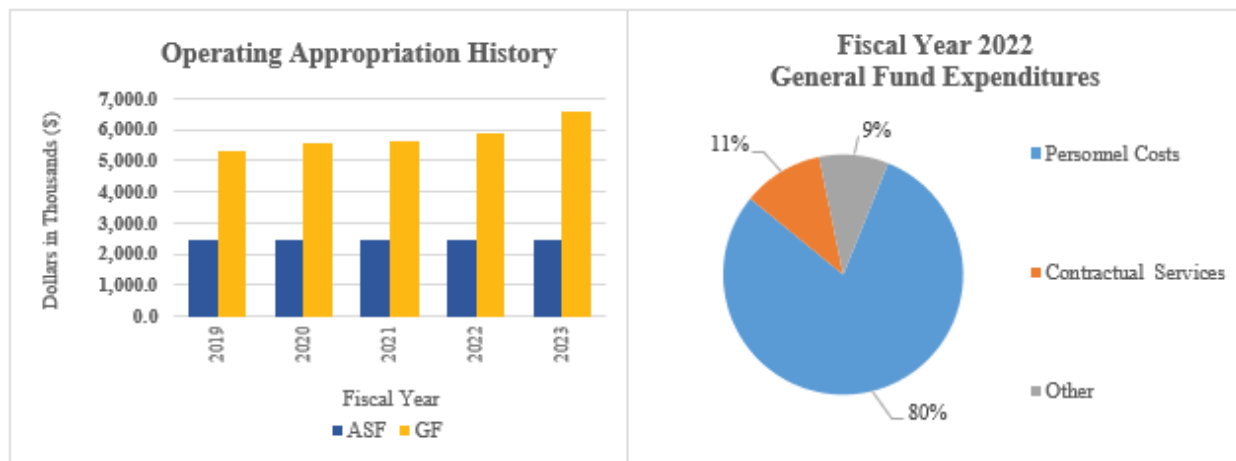


Fire Prevention Commission



At a Glance

- Protect life and property from fire for the residents of Delaware;
- Provide residents of Delaware and all visitors a fire safe environment in the home, the workplace or wherever they pursue their varied interests;
- Provide firefighters, Emergency Medical Services personnel, first responders and residents with professional instruction and training to ensure quality emergency response; and
- Improve public safety in the State.

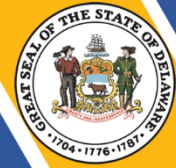


Overview

The Office of the State Fire Marshal provides enforcement of the state fire prevention regulations; performs inspections, plan reviews, fire investigations, juvenile intervention programs, and interacts with the public.

The State Fire School provides training, undertakes projects and engages in activities which will serve to improve emergency response capabilities of the State's fire and emergency responders.

Fire Prevention Commission



The State Fire Prevention Commission provides leadership, policy development, planning, and analysis with regard to state fire prevention regulations, ambulance regulations, fire company financial reporting, Emergency Medical Technician certification, ambulance inspections, and investigatory services.

On the Web

For more information about the Office of the State Fire Marshal, visit statefiremarshal.delaware.gov.

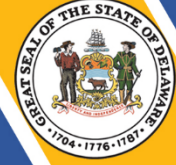
For more information about the State Fire School, visit statefireschool.delaware.gov.

For more information about the State Fire Prevention Commission, visit statefirecommission.delaware.gov.

Performance Measures

IPU	Performance Measure Name	Fiscal Year 2022 Actual	Fiscal Year 2023 Budget	Fiscal Year 2024 Governor's Recommended
75-01-01	<i>Office of the State Fire Marshal</i>			
	Life Safety Inspections conducted per deputy (13)	104	110	125
	Fire Code Complaints handled per deputy (13)	13	15	20
	Average turnaround time for full plan reviews (days)	15	15	15
	Fire investigation caseload per deputy (13)	48	55	60
	Plan review caseload per fire protection specialist	405	415	425
	Full plan reviews/ inspections:			
	New Castle County	2626	2680	2700
	Kent County	782	820	830
	Sussex County	2700	2735	2780
75-02-01	<i>State Fire School</i>			
	# of programs*	1056	1500	1250
	# of fire safety/injury prevention programs*	120	250	200

Fire Prevention Commission



IPU	Performance Measure Name	Fiscal Year 2022 Actual	Fiscal Year 2023 Budget	Fiscal Year 2024 Governor's Recommended
	# of students:			
	fire/rescue	8758	10000	10000
	emergency care	4446	6000	5000
	industry	1340	1000	1000
	hazardous materials technician program	526	500	500
	fire safety/injury prevention*	25158	50000	30000
* Fire Safety public events and school training was still impacted by Covid 19				
75-03-01	State Fire Prevention Commission			
	# of hearings - public, appeal, and grievance	18	18	18
	# of commission meetings	12	12	12
	# of fire service functions	300	287	300
	# of emergency service functions	75	70	75