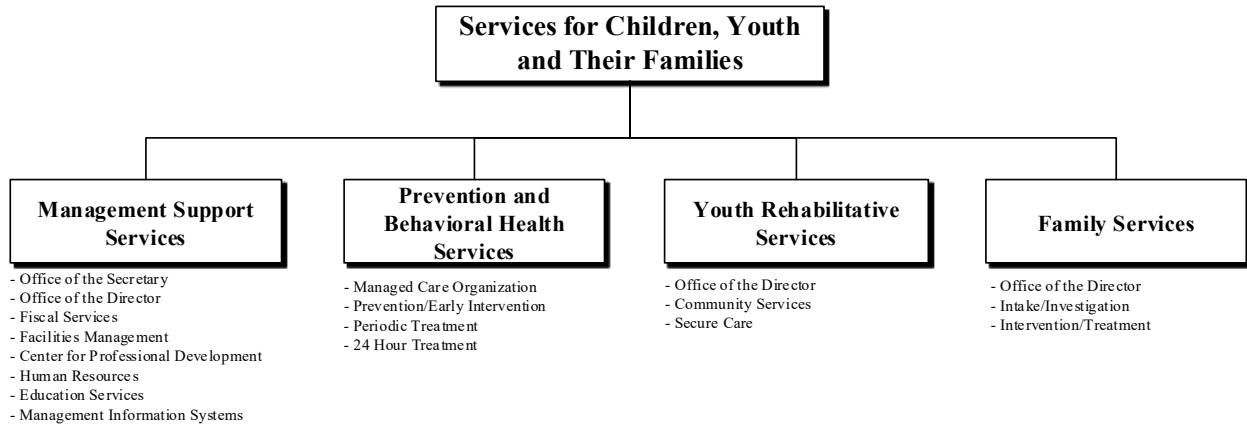
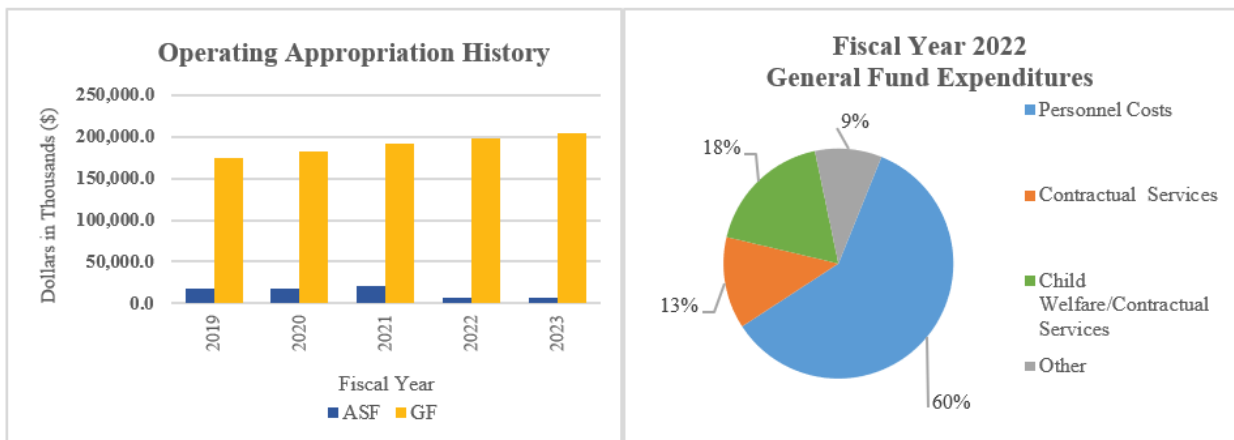


Services for Children, Youth and Their Families



At a Glance

- Investigate child abuse, neglect and dependency, and offer treatment services, foster care, adoption, and independent living;
- Provide accessible and effective behavioral and mental health services in the least restrictive environment to over 3,600 children;
- Prevent entry or reentry into one or more of the services by providing prevention and early intervention services;
- Provide juvenile justice services to over 1,200 youth including: detention, institutional care, probation and aftercare services; and
- Provide educational programs that enable students to continue learning while receiving departmental services.



Services for Children, Youth and Their Families



Overview

The mission of the Department of Services for Children, Youth and their Families (DSCYF) is to engage families and communities to promote the safety and well-being of children through prevention, intervention, treatment and rehabilitative services. DSCYF is comprised of four major divisions: Management and Support Services; Prevention and Behavioral Health Services (PBHS); Youth Rehabilitative Services (YRS); and Family Services.

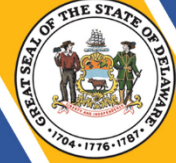
On the Web

For more information, visit kids.delaware.gov.

Performance Measures

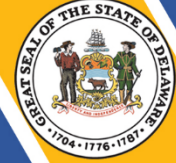
IPU	Performance Measure Name	Fiscal Year 2022 Actual	Fiscal Year 2023 Budget	Fiscal Year 2024 Governor's Recommended
37-01-10	<i>Office of the Secretary</i>			
	% of YRS/PBHS contracted community-based expenditures of total contracted expenditures	44	54	54
	% of children returned to DSCYF service within 12 months of case closure	18.08	26	26
	% of children in DSCYF out-of-home care	11.5	12	12
37-01-15	<i>Office of the Director</i>			
	% of annual revenue goal achieved	112.2	100	100
	% IV-E Penetration Rate for Foster Care*		20	20
*New measure for FY24				
37-01-20	<i>Fiscal Services</i>			
	% of accounts payable transactions processed in First State Financials without the need for modification	98	95	95

Services for Children, Youth and Their Families



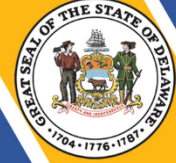
IPU	Performance Measure Name	Fiscal Year 2022 Actual	Fiscal Year 2023 Budget	Fiscal Year 2024 Governor's Recommended
37-01-25	Facilities Management			
	% of work orders completed within established time standards	99	95	95
37-01-30	Human Resources			
	# of days to fill vacancies for recruited positions (average)	62	60	60
37-01-35	Center for Professional Development			
	% of participants who evaluate CPD trainers as "very good" or "excellent" in addressing cultural and diversity issues in DSCYF training sessions	89	90	90
	% of DSCYF training sessions canceled for reasons other than low enrollment or business needs	2	5	5
37-01-40	Education Services			
	% of adjudicated students who transition from a YRS residential facility (non-detention) and maintain school or employment placement for 90 days or more as measured by transition follow-up data	61	70	70
	% of students in an agency school for six months or more, that increase their standard score as measured by the STAR assessment:			
	Mathematics	87	90	90
	Reading	70	90	90
	% of adjudicated students who participate in a transition meeting 30-45 days before discharge	32	90	90
	% of students who remain continuously enrolled in a DSCYF facility for four marking periods and earn enough credits	100	95	95

Services for Children, Youth and Their Families



IPU	Performance Measure Name	Fiscal Year 2022 Actual	Fiscal Year 2023 Budget	Fiscal Year 2024 Governor's Recommended
	for promotion to the next grade level			
37-01-50 Management Information Systems				
	% of time the Department Case Management System is available during standard working hours	100	99.5	99.5
	% of time the Department Production Databases are available during standard working hours	99.5	99.5	99.5
37-04-10 Managed Care Organization				
	% timeliness for same-day services for emergency intake dispositions % of crisis assessments that are started within 60 minutes of clinician referral	81	95	95
37-04-20 Prevention/Early Intervention				
	% of parents with children in the K-5 Early Intervention program that were satisfied with improvements in their children's behavioral health	98	97	97
	% of teachers satisfied with improvements in behavior of their students in the K-5 Early Intervention program	97	90	90
37-04-30 Periodic Treatment				
	% of identified clients presenting in crisis, treated without hospital admissions	78	80	80
37-04-40 24 Hour Treatment				
	% of hospital readmissions within 30 days of discharge	13	10	10

Services for Children, Youth and Their Families



IPU	Performance Measure Name	Fiscal Year 2022 Actual	Fiscal Year 2023 Budget	Fiscal Year 2024 Governor's Recommended
	% of hospital readmissions within 180 days of discharge	28	25	25
	% of inpatient hospital expenditures as a total of all treatment expenditures	40	20	35
37-05-30 Community Services				
	% of Level IV recidivism	33	35	35
	% of initial probation contacts on time	68	90	90
	% of ongoing probation contacts on time	71	90	90
37-05-50 Secure Care				
	% of Ferris School recidivism*	45	40	40
	*Recidivism rates reflect a cohort of calendar year 2020 releases. the recidivism rates are significantly lower than previous years. The impact of Covid 19 on data is uncertain but it is believed that Covid 19 related restrictions and changes in law enforcement policies have had some impact			
37-06-10 Office of the Director				
	% of quality assurance case reviews completed timely	100	100	100
37-06-30 Intake/Investigation				
	% of initial investigation contacts on time	91	95	95
37-06-40 Intervention/Treatment				
	% of timely initial treatment contacts	79	95	95
	% absence of maltreatment within 12 months	96	95	95
	% of exits to adoption in less than 24 months	39	37	37