

Harry Potter
QUIDDITCH
CHAMPIONS



HAGRID

PAPERCRAFT MASK

★ **TABLE OF CONTENTS** ★

P3.....	MATERIALS AND PRINTING
P4.....	PREPARING THE PIECES
P5.....	ASSEMBLY OVERVIEW
P6.....	PARTS GUIDE
P7.....	SUBASSEMBLY A
P11.....	SUBASSEMBLY B
P14.....	SUBASSEMBLY C
P18.....	SUBASSEMBLY D
P22.....	SUBASSEMBLY E
P25.....	SUBASSEMBLY F
P28.....	SUBASSEMBLY G
P31.....	SUBASSEMBLY H
P34.....	SUBASSEMBLY I
P36.....	ADDITIONAL HAIR PARTS
P44.....	FINAL ASSEMBLY
P53.....	FINISHED MASK

MATERIALS

- Color printer
- 27 sheets of A4 or US letter size printer paper for the printed parts, or 53 sheets if you wish to print the entire PDF
- 27 sheets of A4 or US letter size 300GSM card stock. If your printer is magically capable, print directly onto the 300GSM card stock, no printer paper is required
- Spray adhesive or a glue stick (for sticking the paper pieces to card stock)
- Scissors
- Hot glue gun or double-sided sticky tape (for use on glue tabs during construction)
- Folding bone or other scoring implement. Wand use not recommended
- Ruler
- Elastic band or string

PRINTING

This mask of Hogwarts' most beloved keeper of grounds and keys is designed to be printed on standard US Letter paper (8 1/2" x 11") or A4 paper (210mm x 297mm).

Make sure that the "print to scale" option is turned off in your printer settings to ensure that the pieces are printed at the correct size. Otherwise Reducio or Engorgio charms may be required.

PREPARING THE PIECES

If your printer is capable of printing on 300GSM card stock, print directly onto the card stock and skip step 2. If your printer can only print onto lighter paper stock, you will need to stick the printed pieces to card stock to provide the required rigidity.

STEP 1 - PRINT

Print all the mask pieces onto paper or cardstock.

STEP 2 - GLUE TO CARD STOCK

If printing onto paper, cut the pieces out roughly, leaving some space around the shapes. Glue the pieces to the card stock using a spray adhesive or glue stick.

STEP 3 - CUT OUT THE PIECES

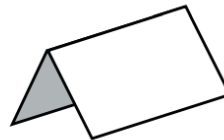
Cut the pieces out accurately along the cut lines (indicated by a solid orange line). Do not cut along the fold lines (indicated by a dotted orange line).

STEP 4 - SCORE THE FOLDS

Using a folding bone or similar object (the blunt edge of a butter knife works well) and a ruler, score along all fold lines.

STEP 5 - FOLD THE PIECES

Fold along all the scored creases, paying attention to which direction the piece should be folded. Refer to diagram below.



MOUNTAIN fold line

ASSEMBLY OVERVIEW

As you begin construction of the mask, refer to the Parts Guide on page 6 to ensure you are using the correct pieces and build each subassembly in order, laying these aside until all subassemblies are constructed and final assembly can begin.

STEP 1 - LAY OUT THE PIECES

Take time to familiarize yourself with the pieces. Each piece is numbered for easy identification. Lay the pieces out in order, carefully grouping the pieces for each subassembly together.

STEP 2 - DRY FIT

Check that you know which piece attaches to which before applying any adhesive. Be sure of where each glue tab attaches.

STEP 3 - STICK

Work through the subassemblies in order. Using either hot glue or double-sided sticky tape, cover the glue tabs in the adhesive on the printed side and carefully stick the pieces together. Do not apply adhesive to the white glue tabs until all subassemblies are completed and you are ready to begin final assembly.

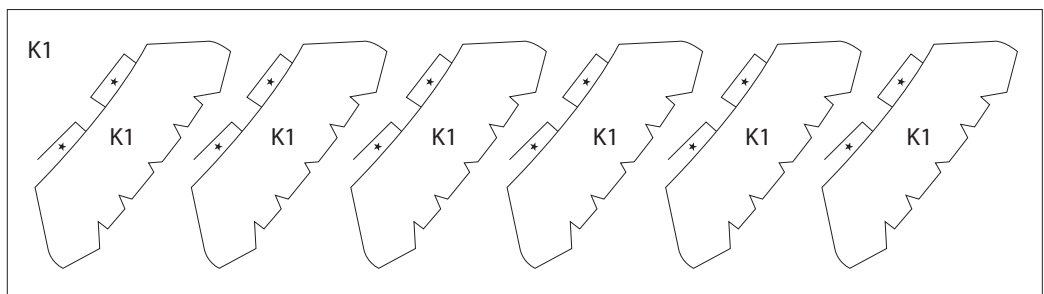
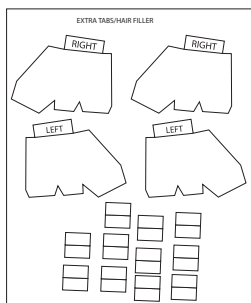
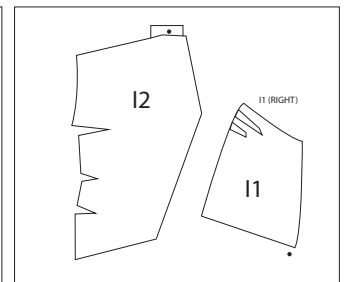
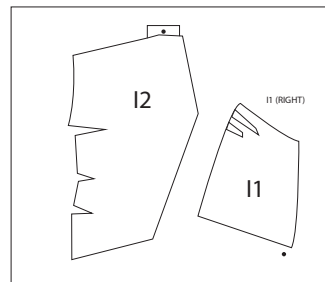
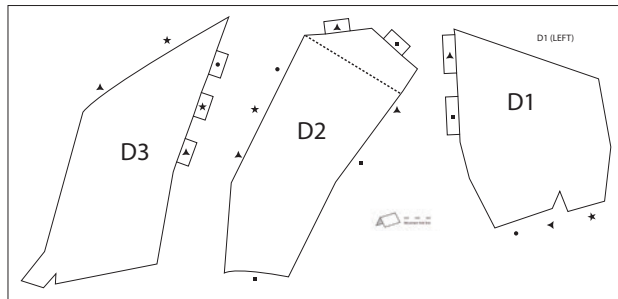
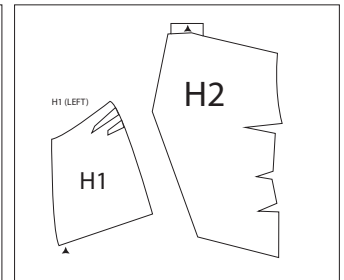
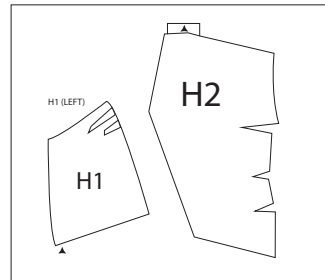
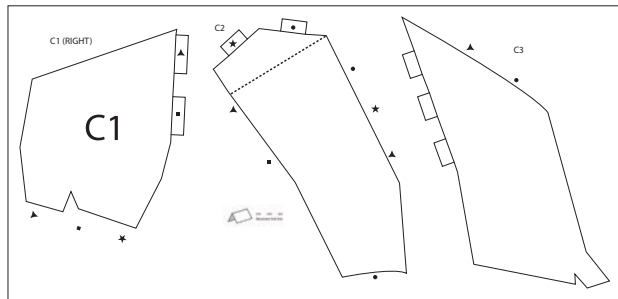
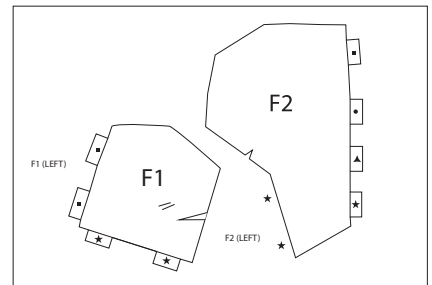
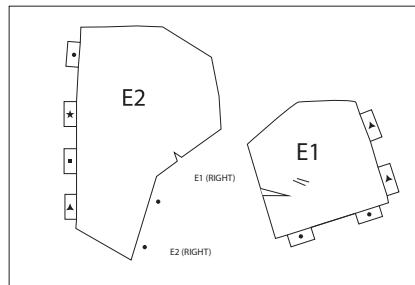
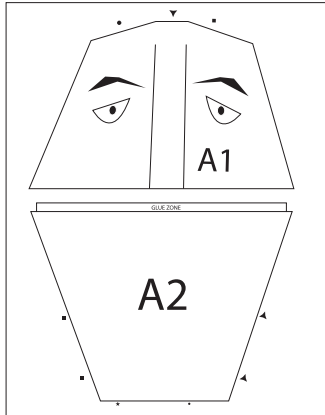
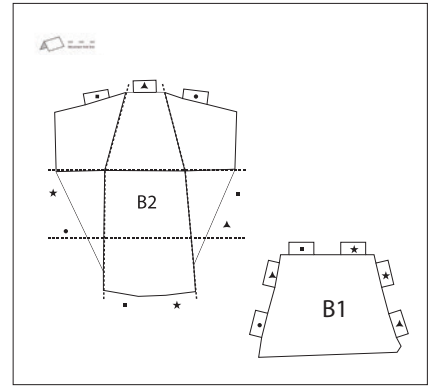
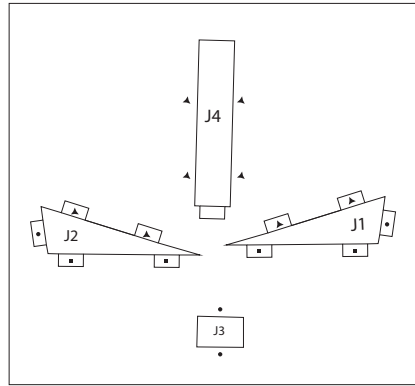
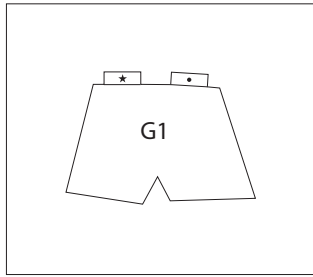
STEP 4 - FINAL ASSEMBLY

Apply adhesive to the remaining glue tabs and connect the finished subassemblies together, referring to the final assembly section starting on page 44.

STEP 5 - ENJOY YOUR MASK!

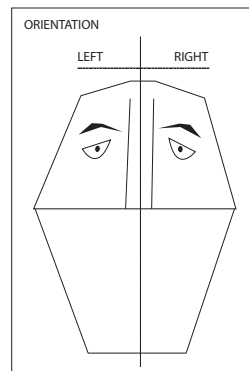
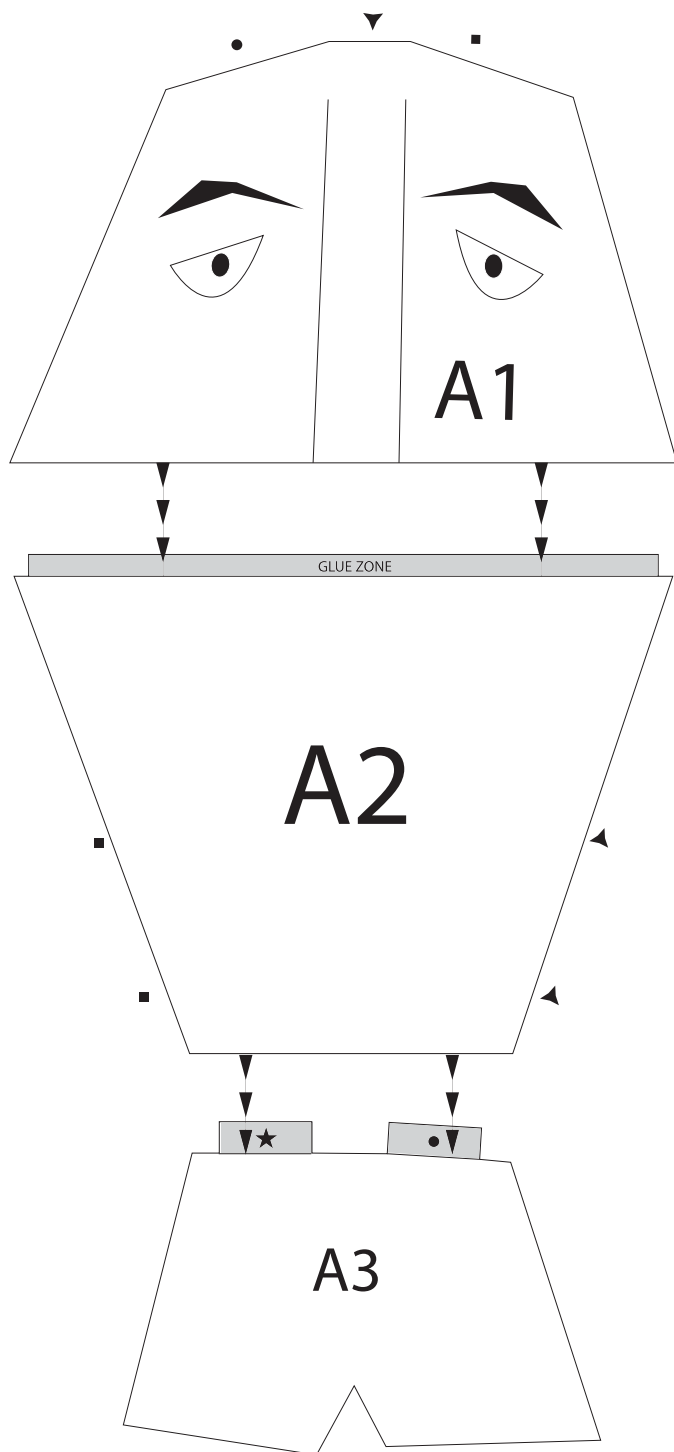
Be the envy of the Quidditch Pitch as you sport this magical piece of papercraft artistry!

PARTS GUIDE

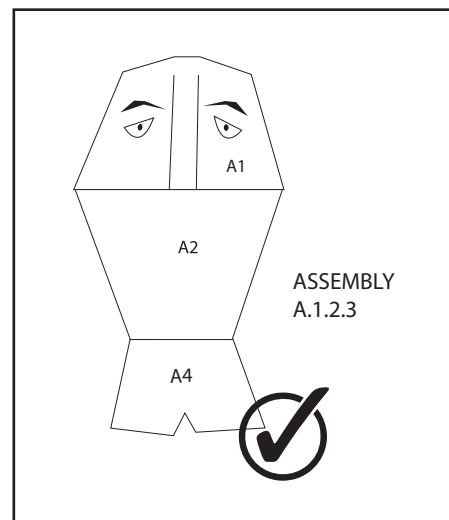


SUBASSEMBLY A

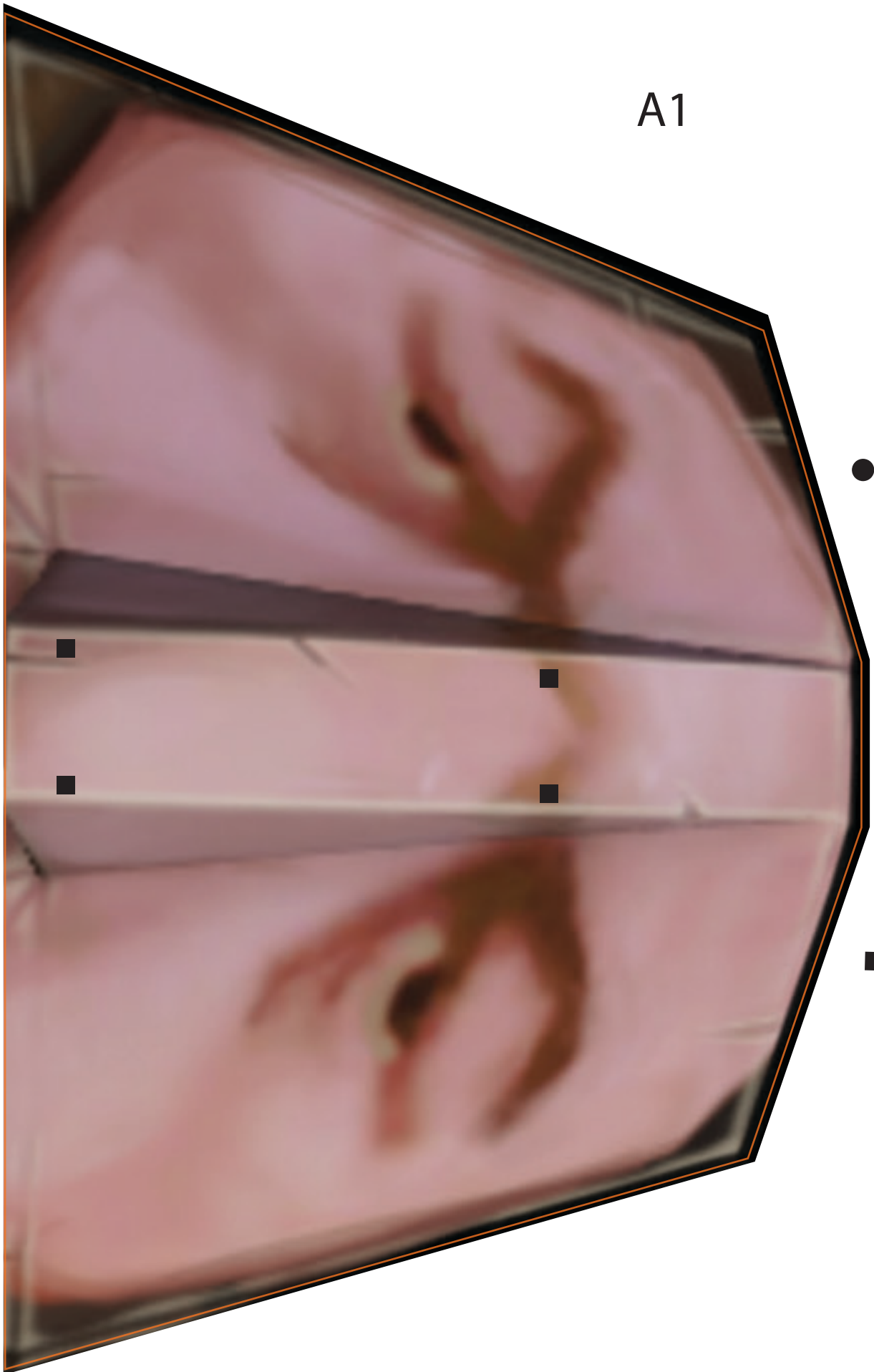
Refer to the diagrams below before construction begins, ensuring that each piece has been correctly identified and dry-fit before applying any adhesive.



- 1) Apply adhesive only to the tab labeled **GLUE ZONE**, covering the entire area.
- 2) Lay A2 flat and carefully stick A1 on top, lining up the edge with the bottom of the glue zone area.
- 3) Apply adhesive to the tabs on A3 and stick A2 on top, only covering the glue tabs.



A1

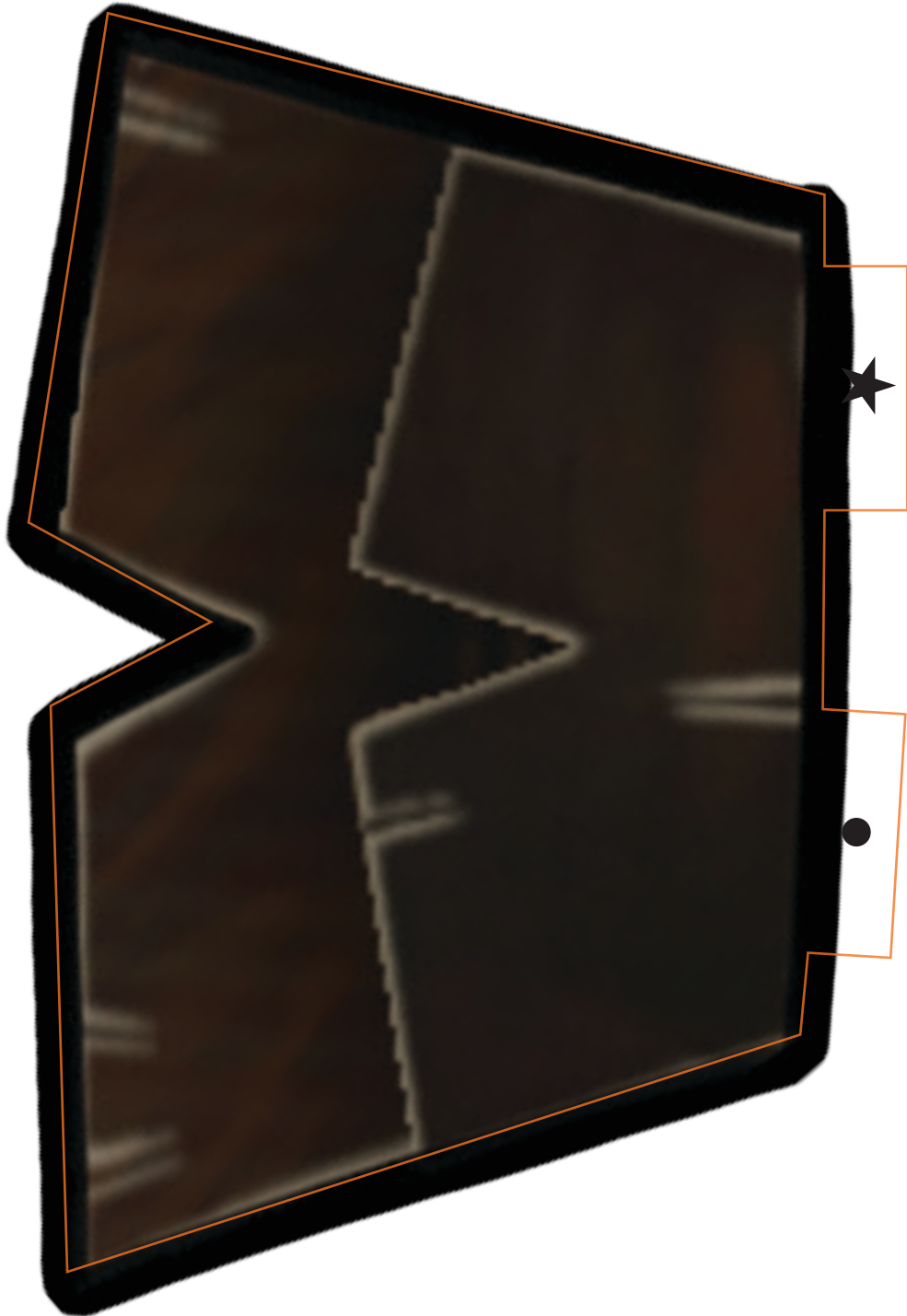


GLUE ZONE

A2

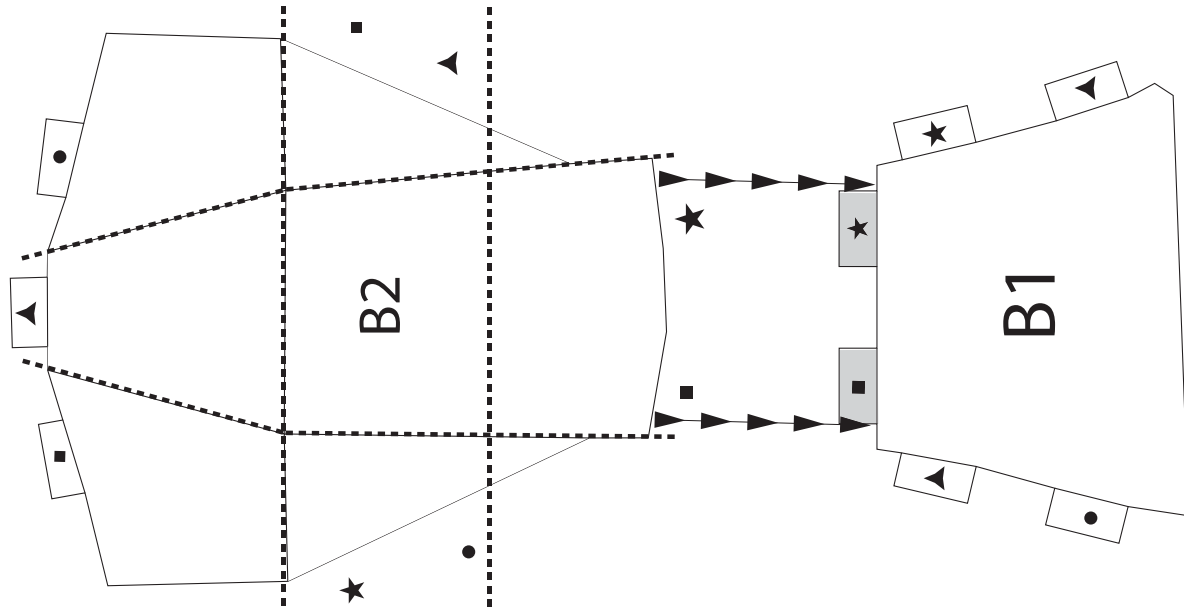


A3

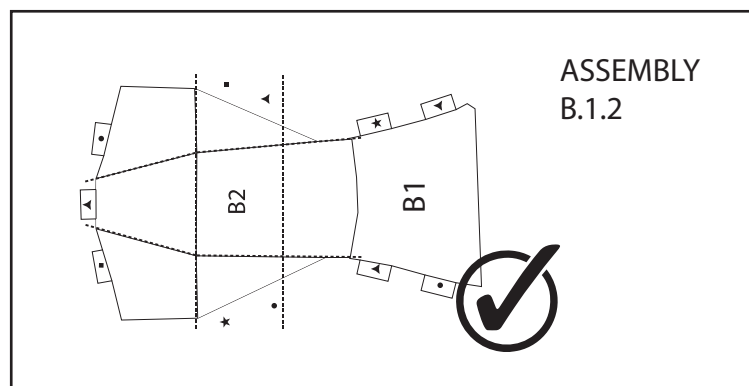


SUBASSEMBLY B

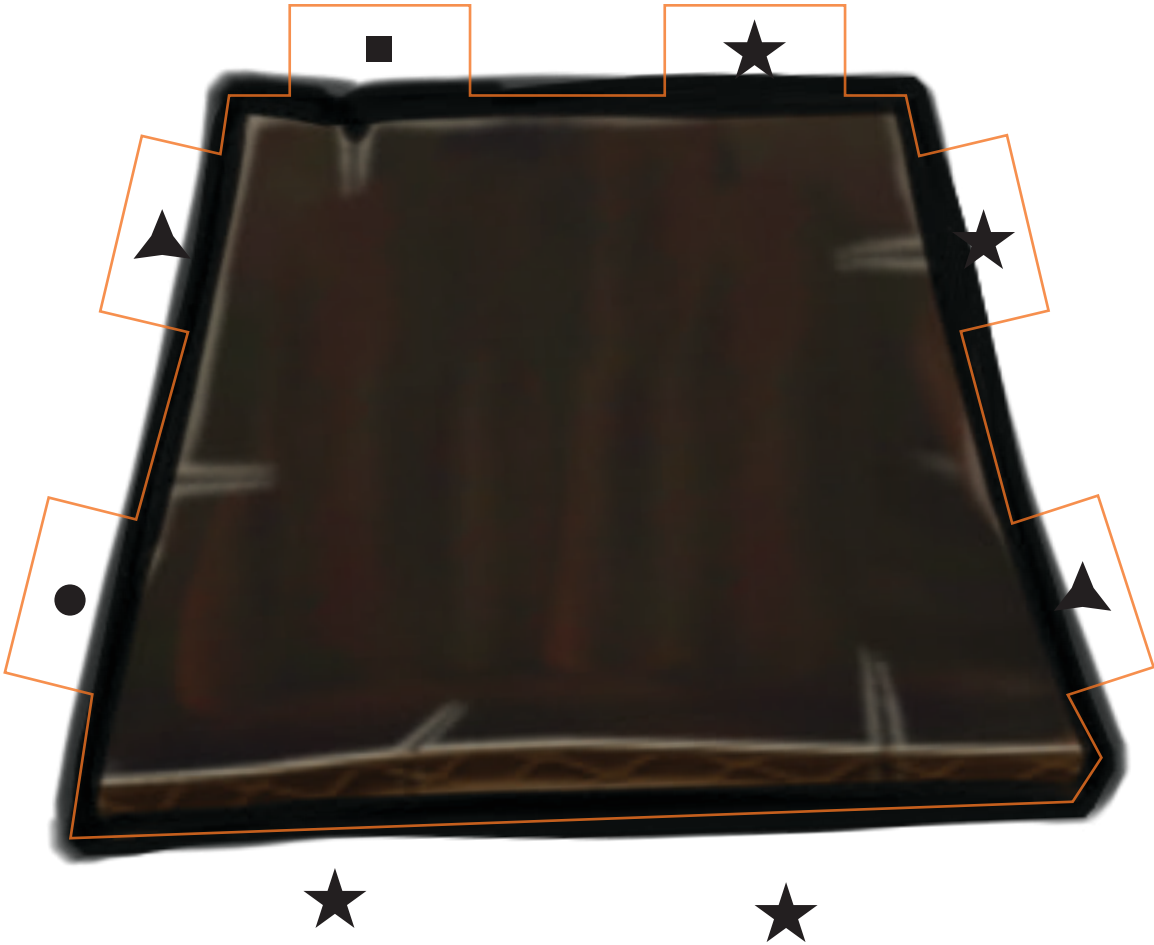
Refer to the diagrams below before construction begins, ensuring that each piece has been correctly identified and dry-fit before applying any adhesive.



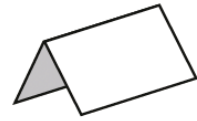
- 1) Apply adhesive only to the tabs marked in grey on B1.
- 2) Stick B2 on top of B1, fully covering tabs.



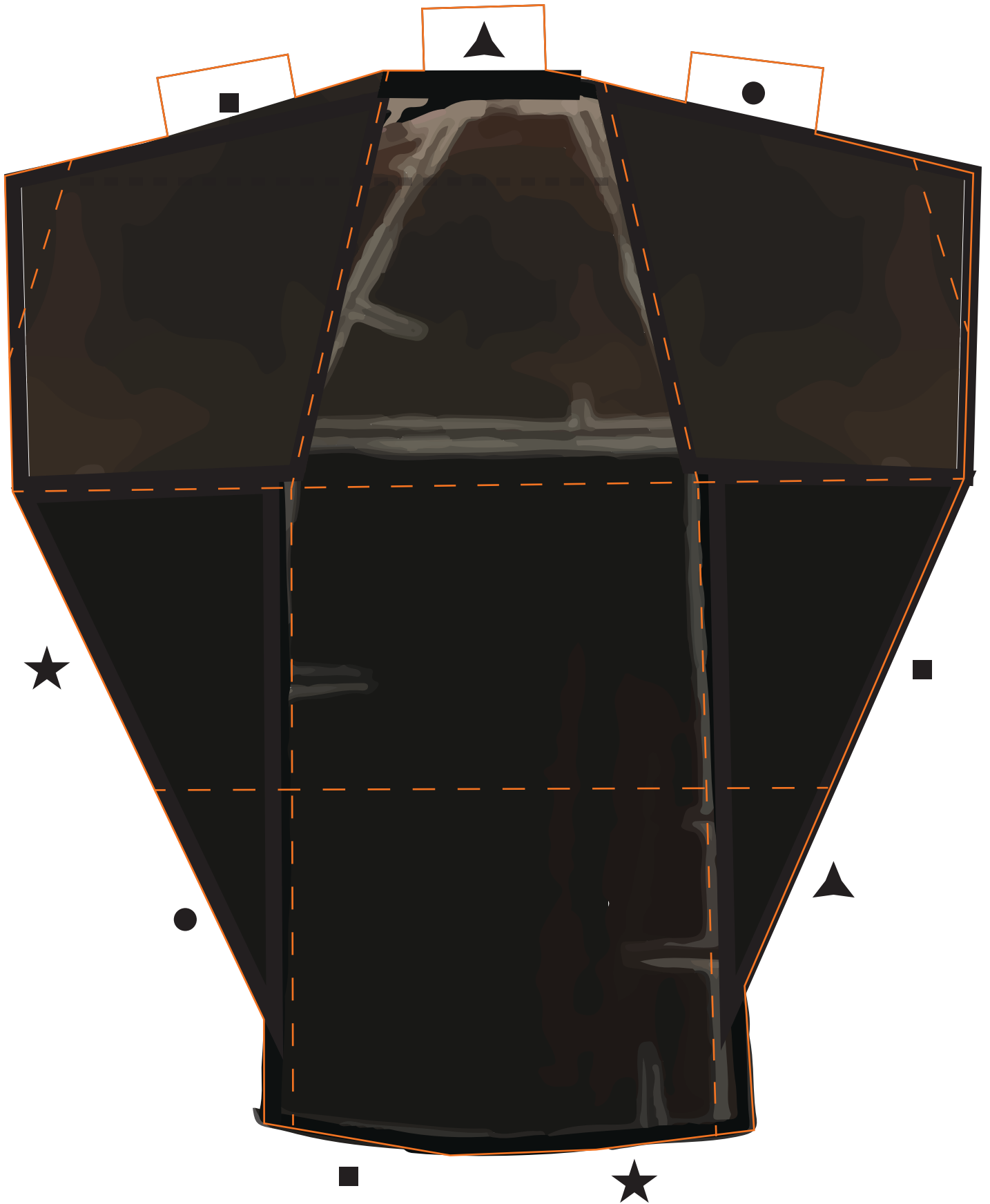
B1



B2

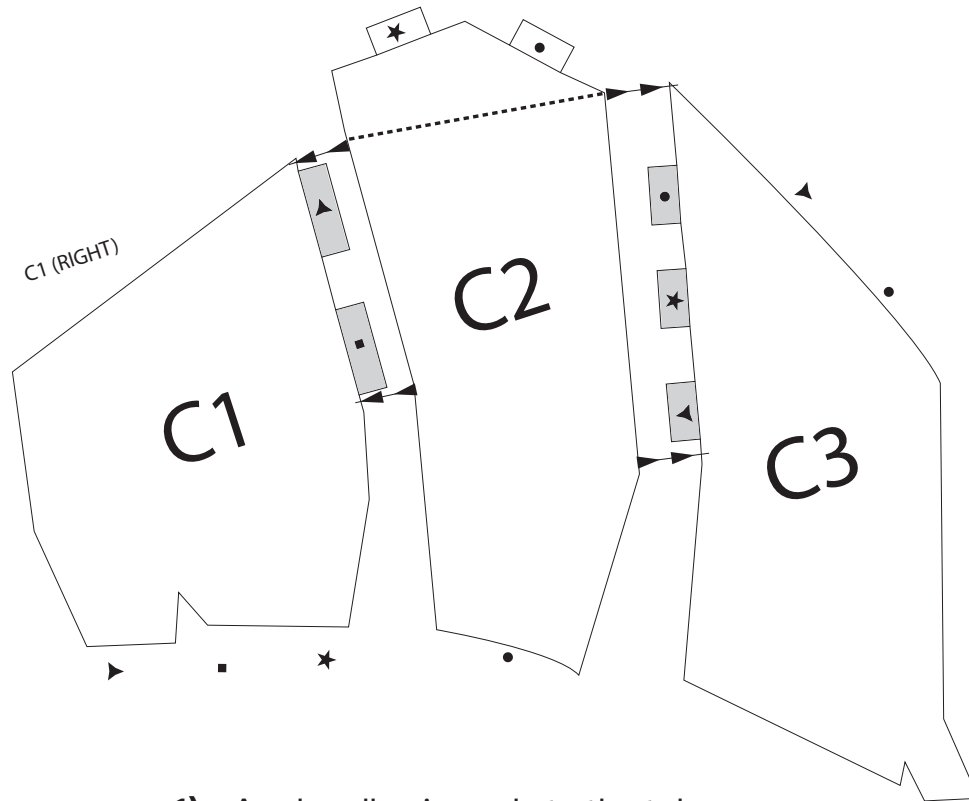


— — —
Mountain fold line

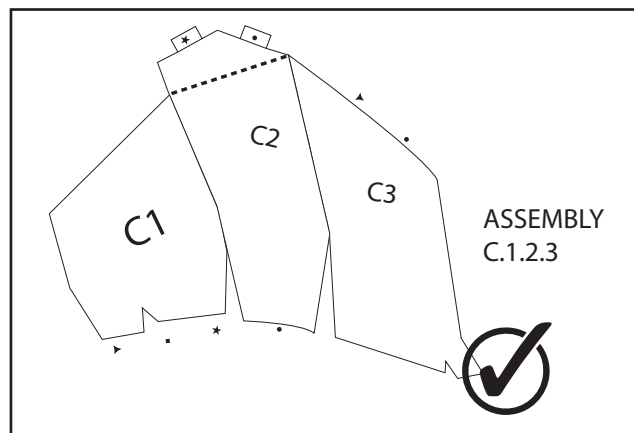


SUBASSEMBLY C

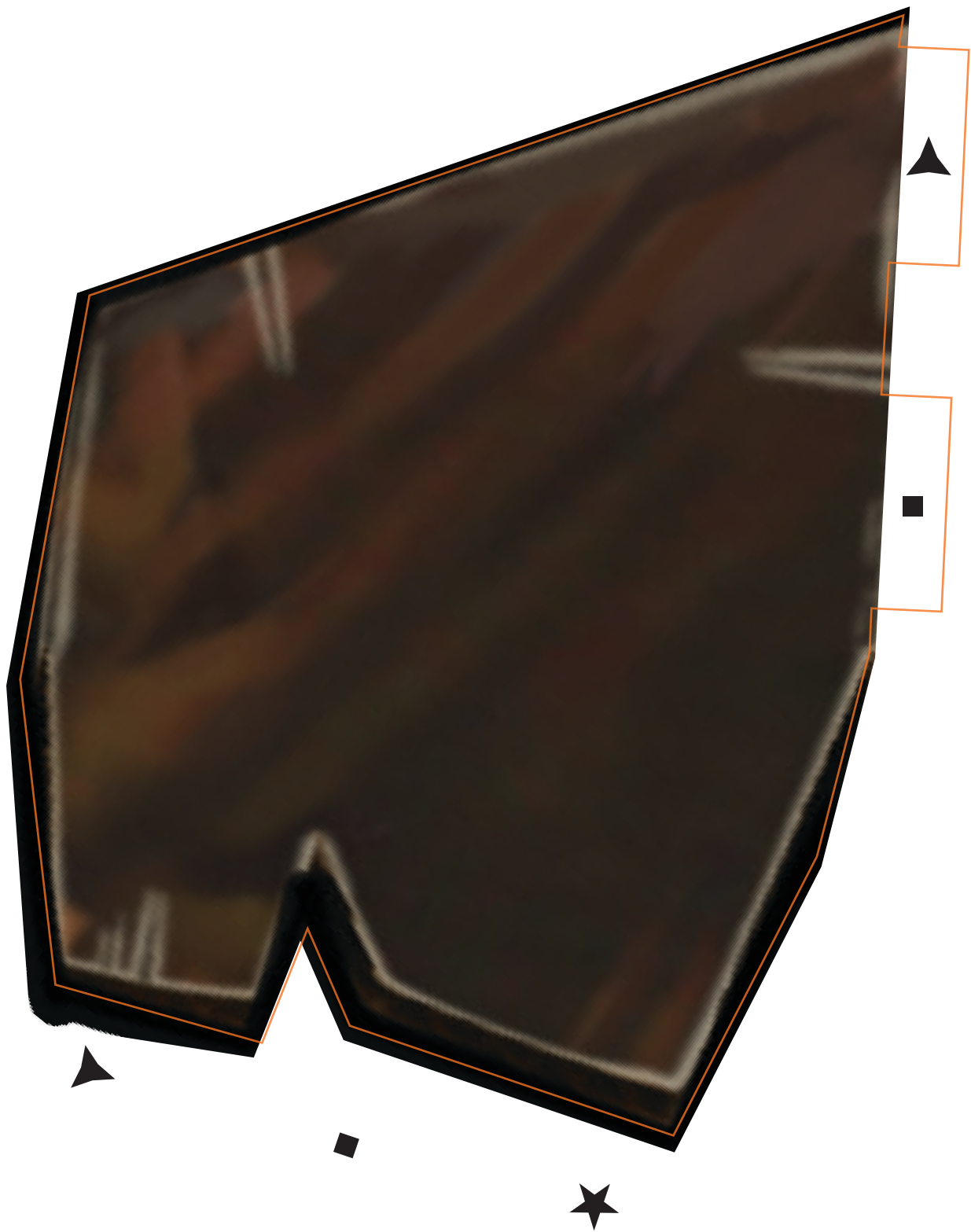
Refer to the diagrams below before construction begins, ensuring that each piece has been correctly identified and dry-fit before applying any adhesive.



- 1) Apply adhesive only to the tabs marked in grey on C1 and C3.
- 2) Stick C2 on top of C1, fully covering tabs. Repeat action with C3.

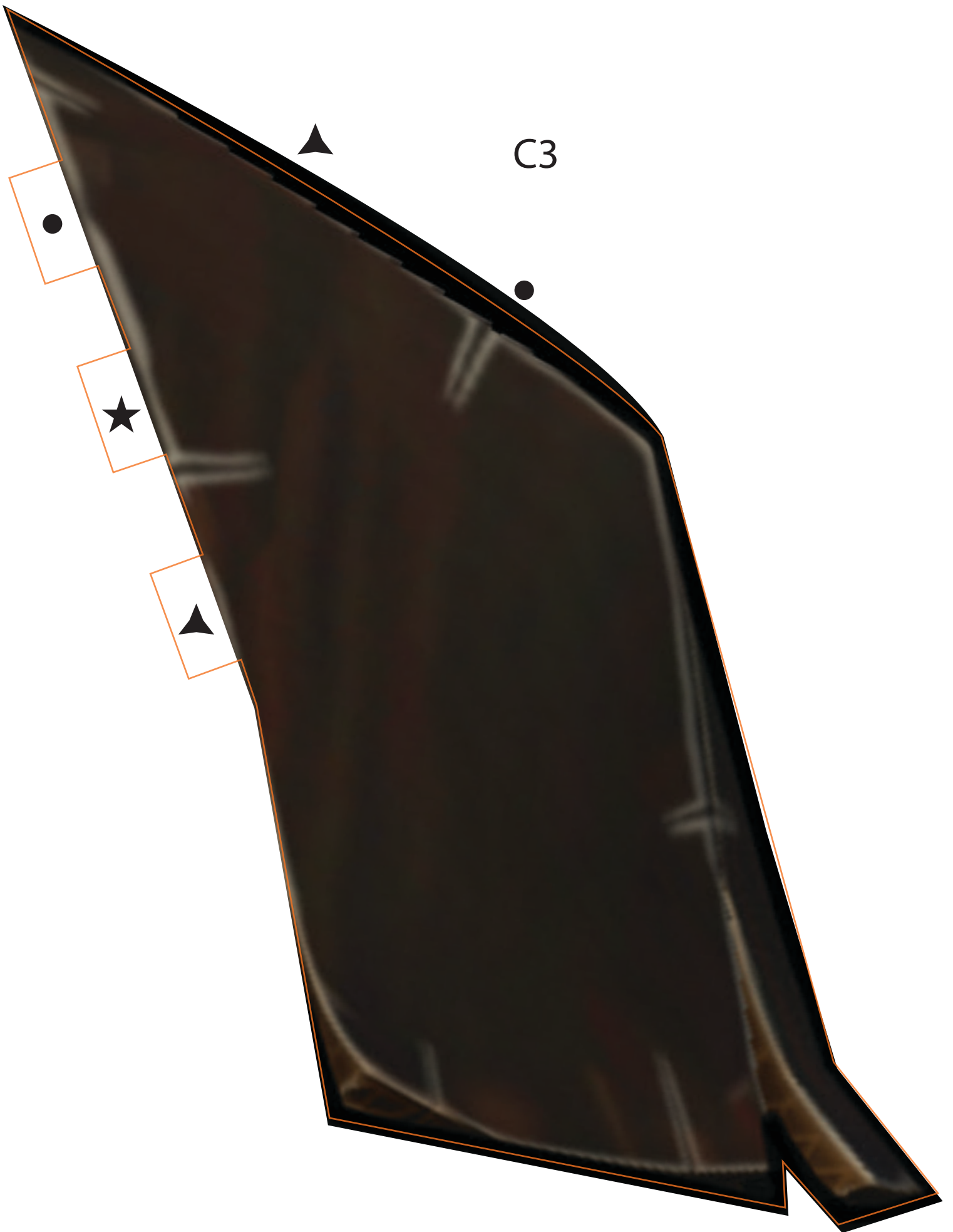


C1 (RIGHT)





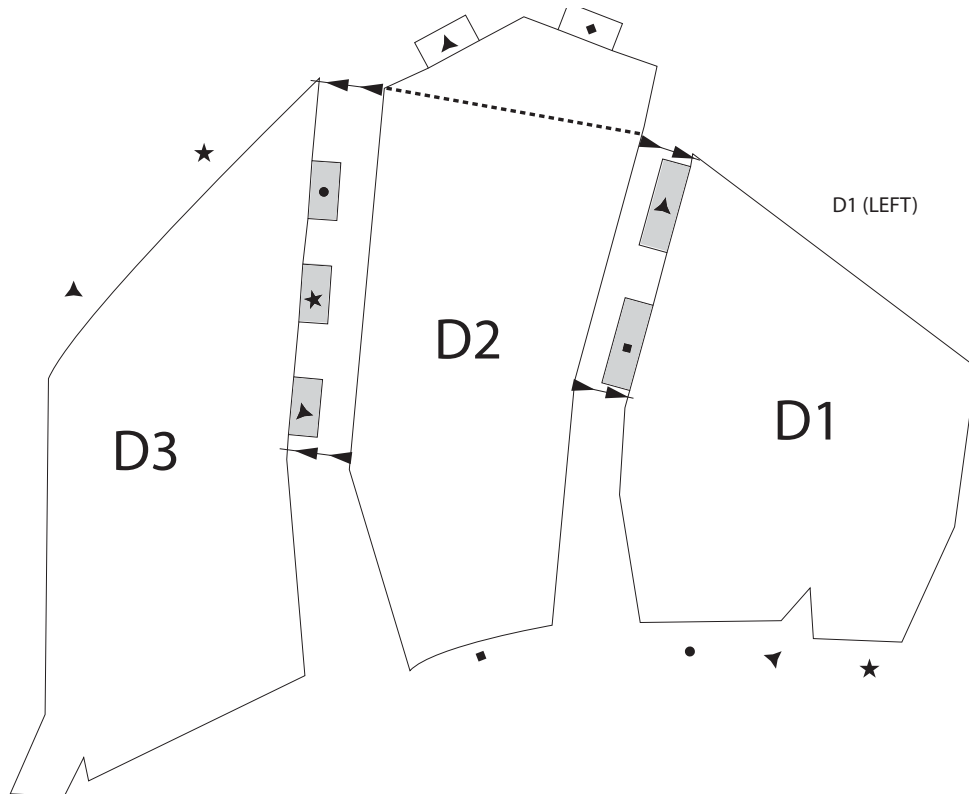
C2



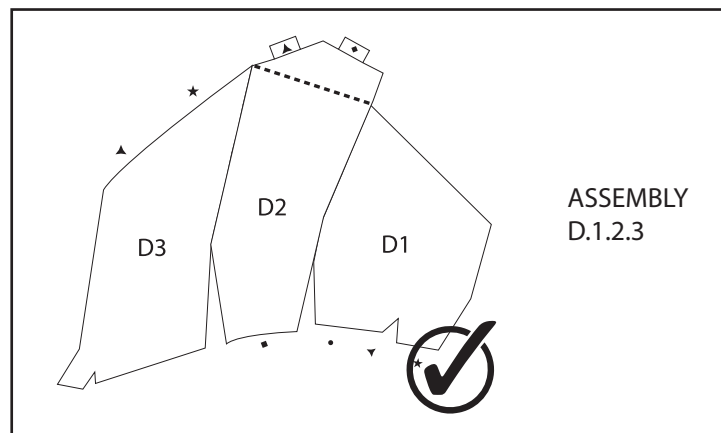
C3

SUBASSEMBLY D

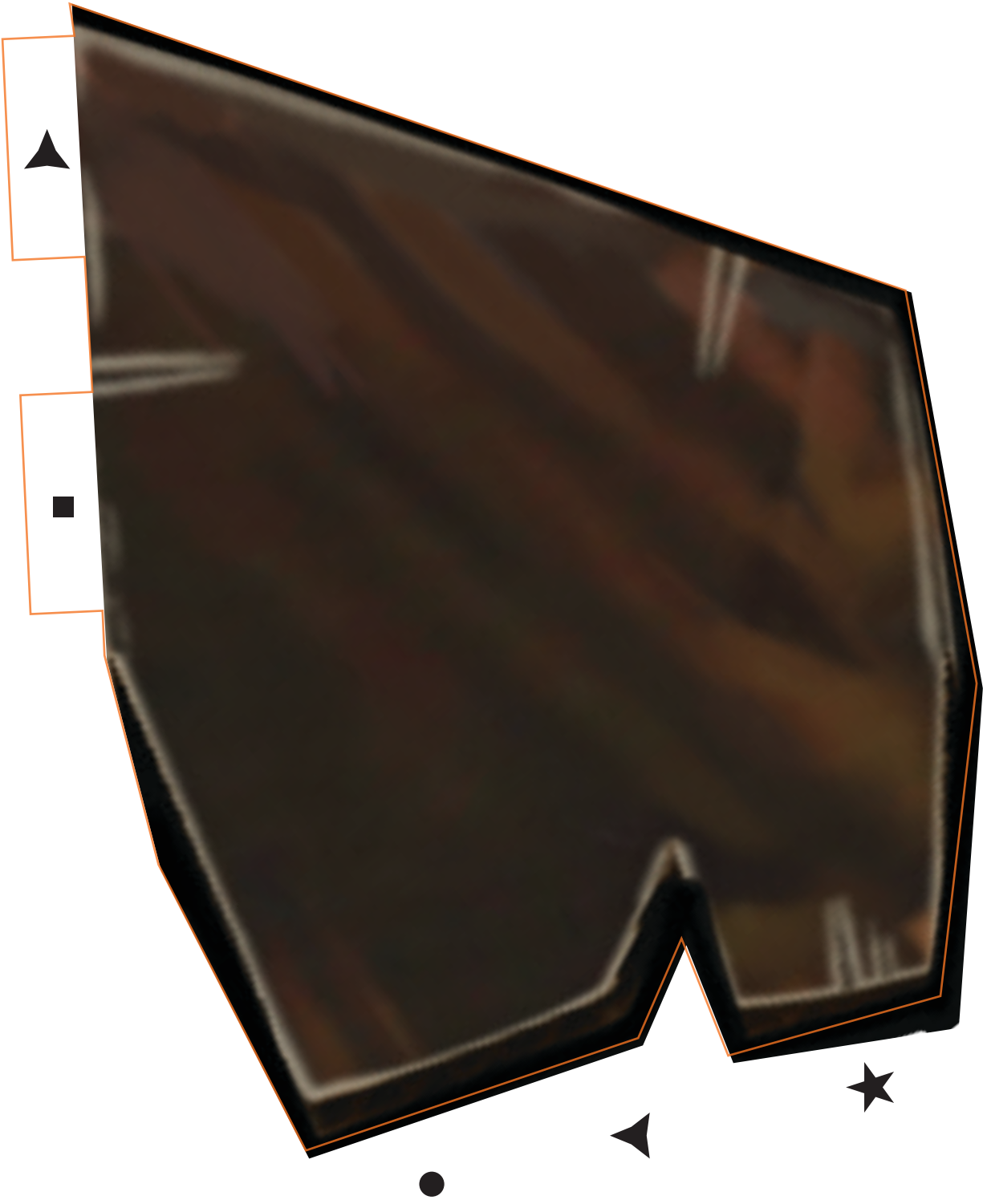
Refer to the diagrams below before construction begins, ensuring that each piece has been correctly identified and dry-fit before applying any adhesive.



- 1) Apply adhesive only to the tabs marked in grey on D1 and D3.
- 2) Stick D2 on top of D1, fully covering tabs. Repeat action with D3.



D1 (LEFT)



D2

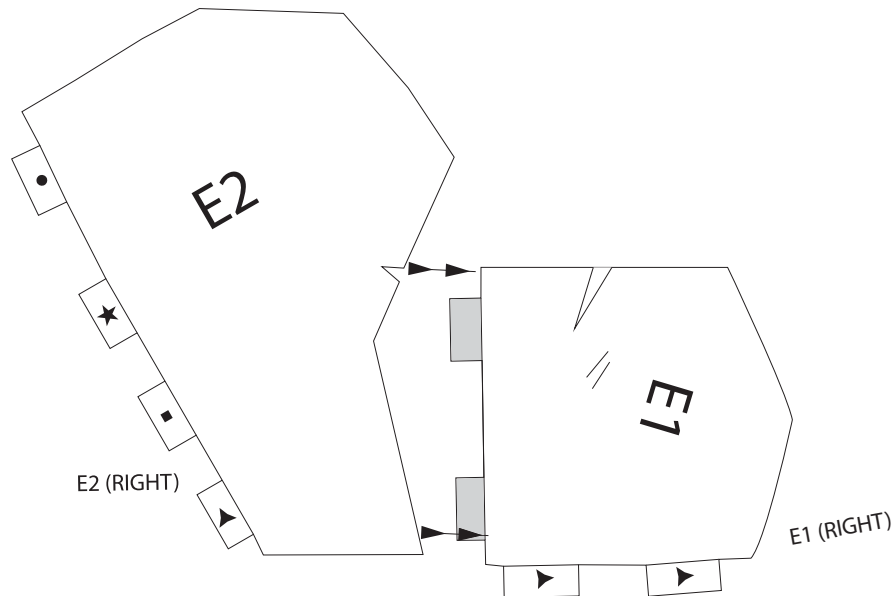


D3

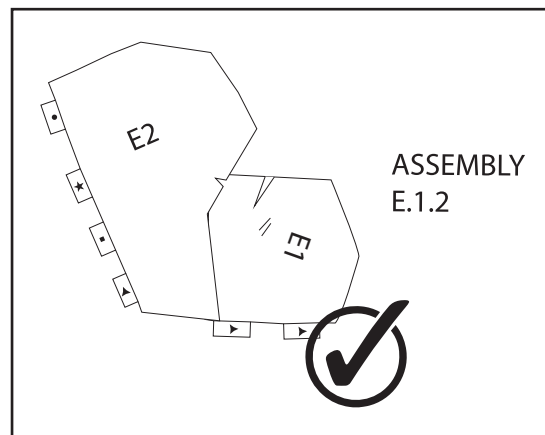


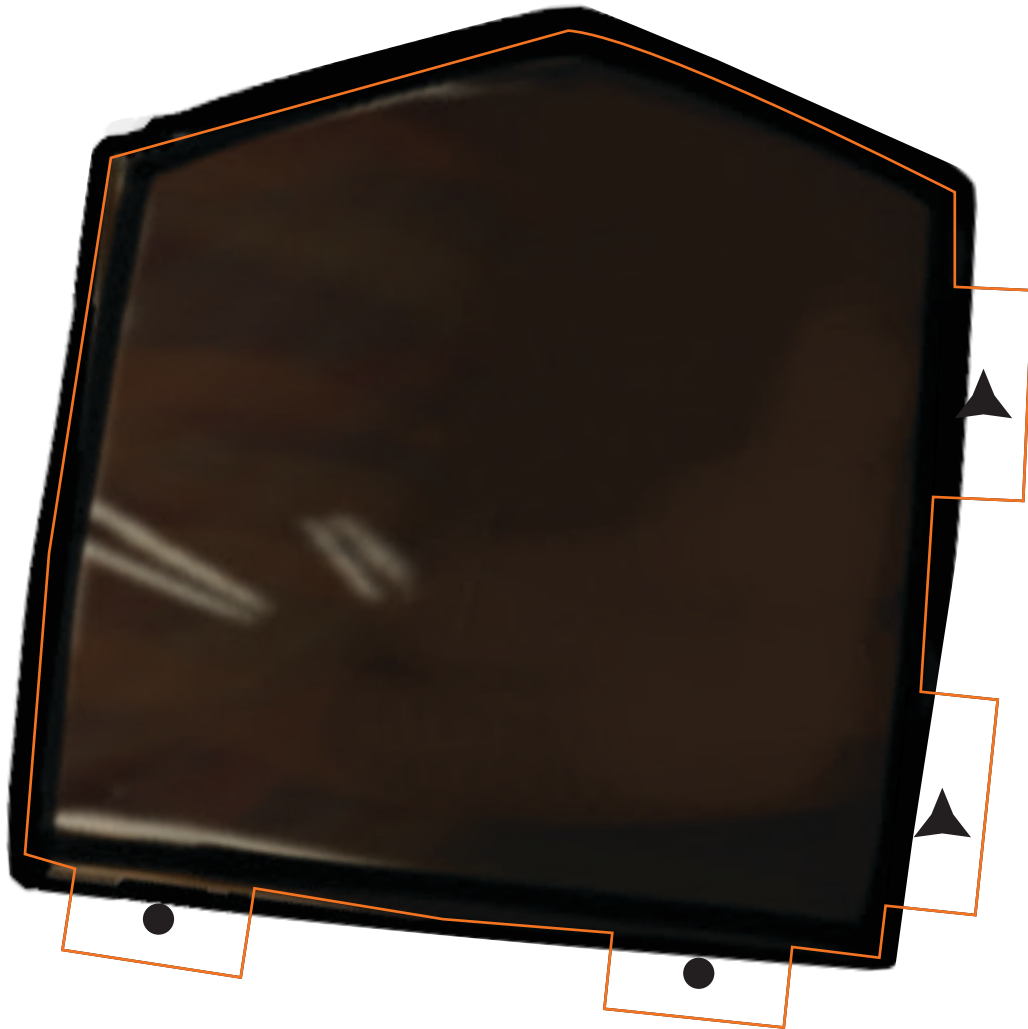
SUBASSEMBLY E

Refer to the diagrams below before construction begins, ensuring that each piece has been correctly identified and dry-fit before applying any adhesive.



- 1) Apply adhesive only to the tabs marked in grey on E1.
- 2) Stick E2 on top of E1, fully covering tabs. Leave no gap and ensure pieces are aligned correctly, referring to the diagram below.





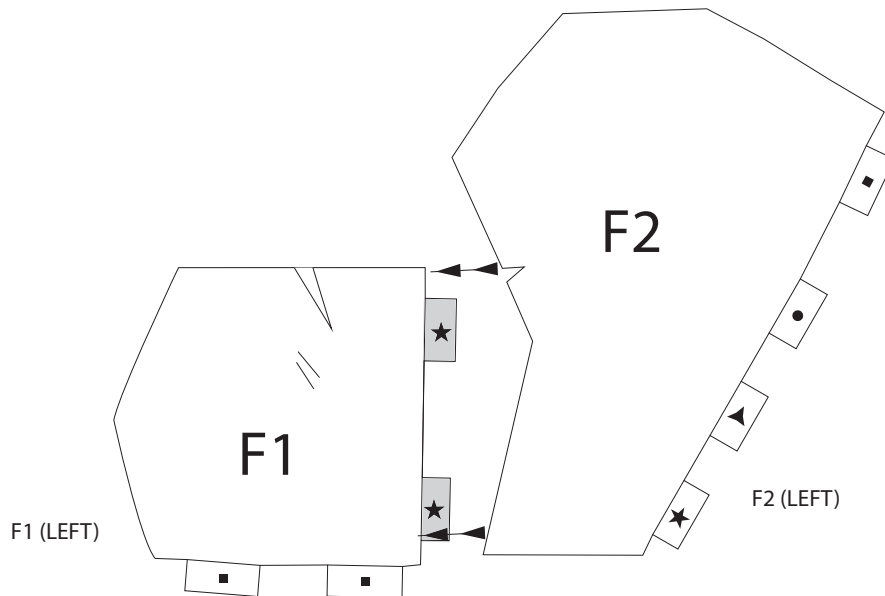
E1 (RIGHT)



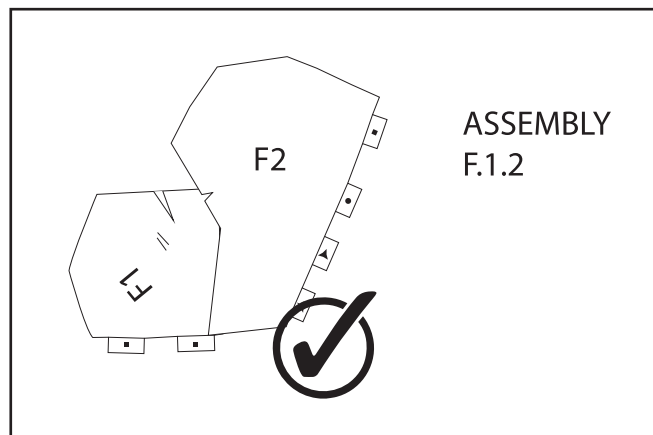
E2 (RIGHT)

SUBASSEMBLY F

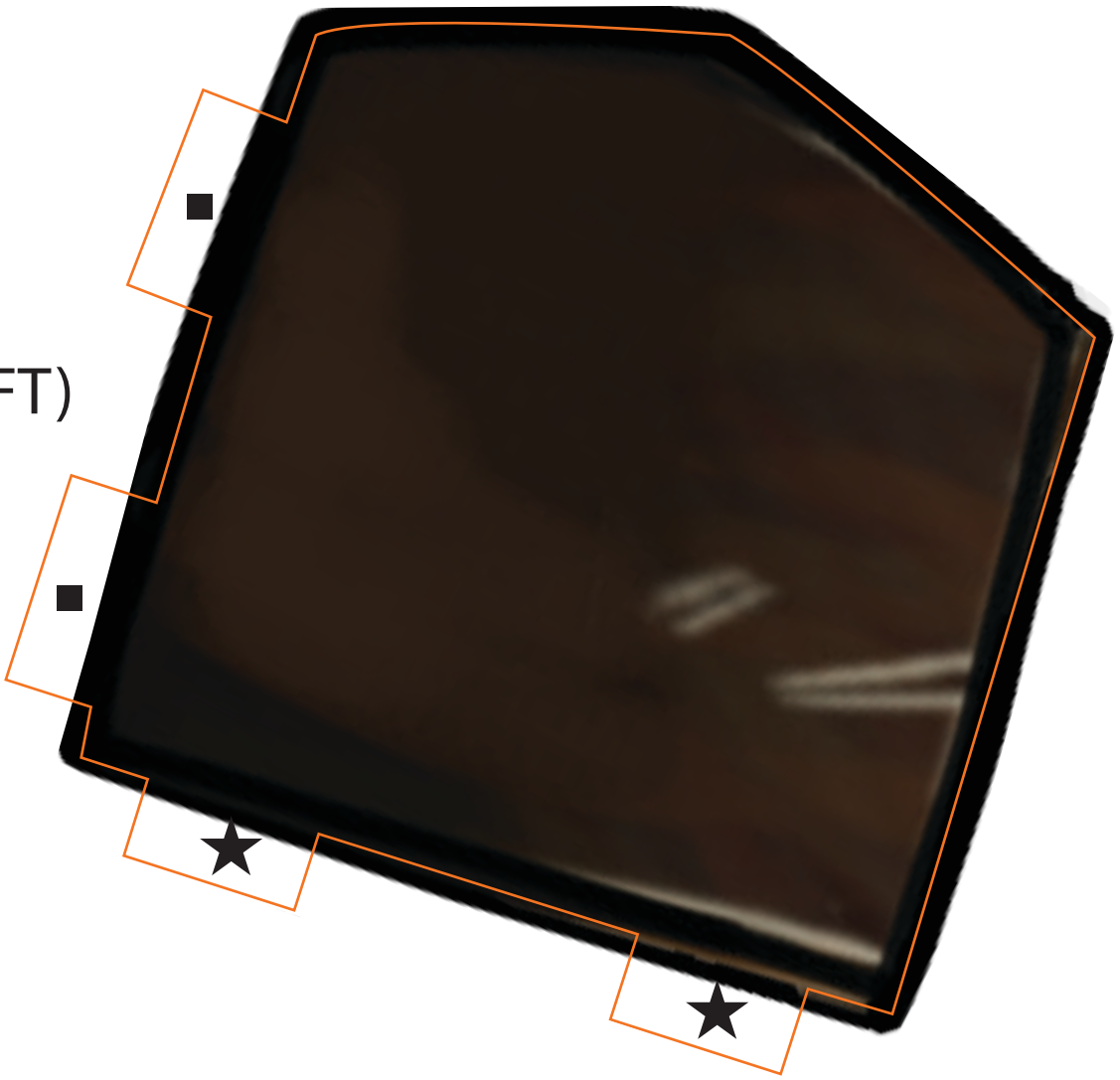
Refer to the diagrams below before construction begins, ensuring that each piece has been correctly identified and dry-fit before applying any adhesive.



- 1) Apply adhesive only to the tabs marked in grey on F1.
- 2) Stick F2 on top of F1, fully covering tabs. Leave no gap and ensure pieces are aligned correctly, referring to the diagram below.



F1 (LEFT)

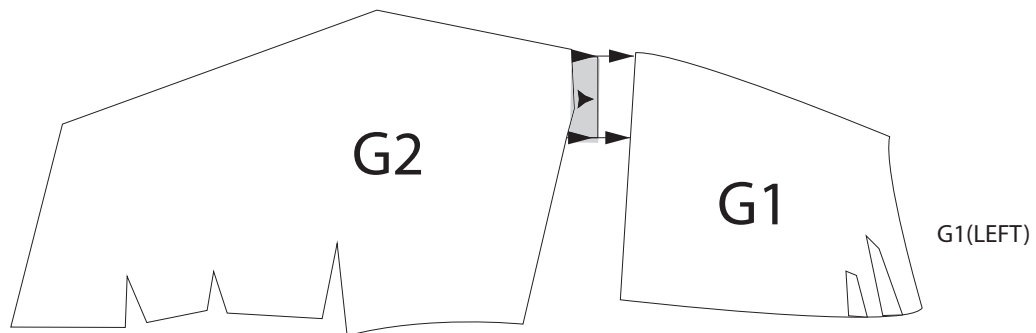




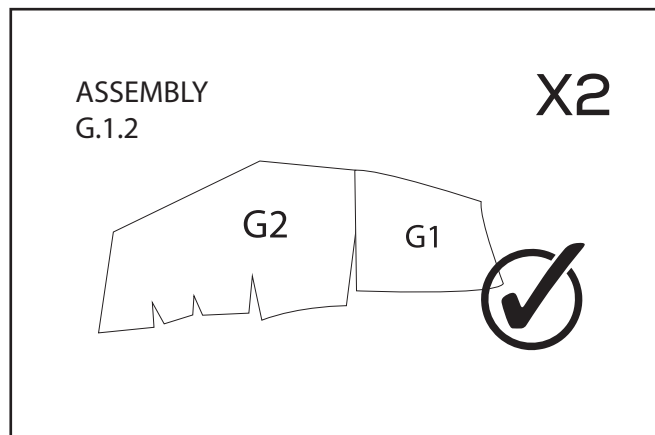
F2 (LEFT)

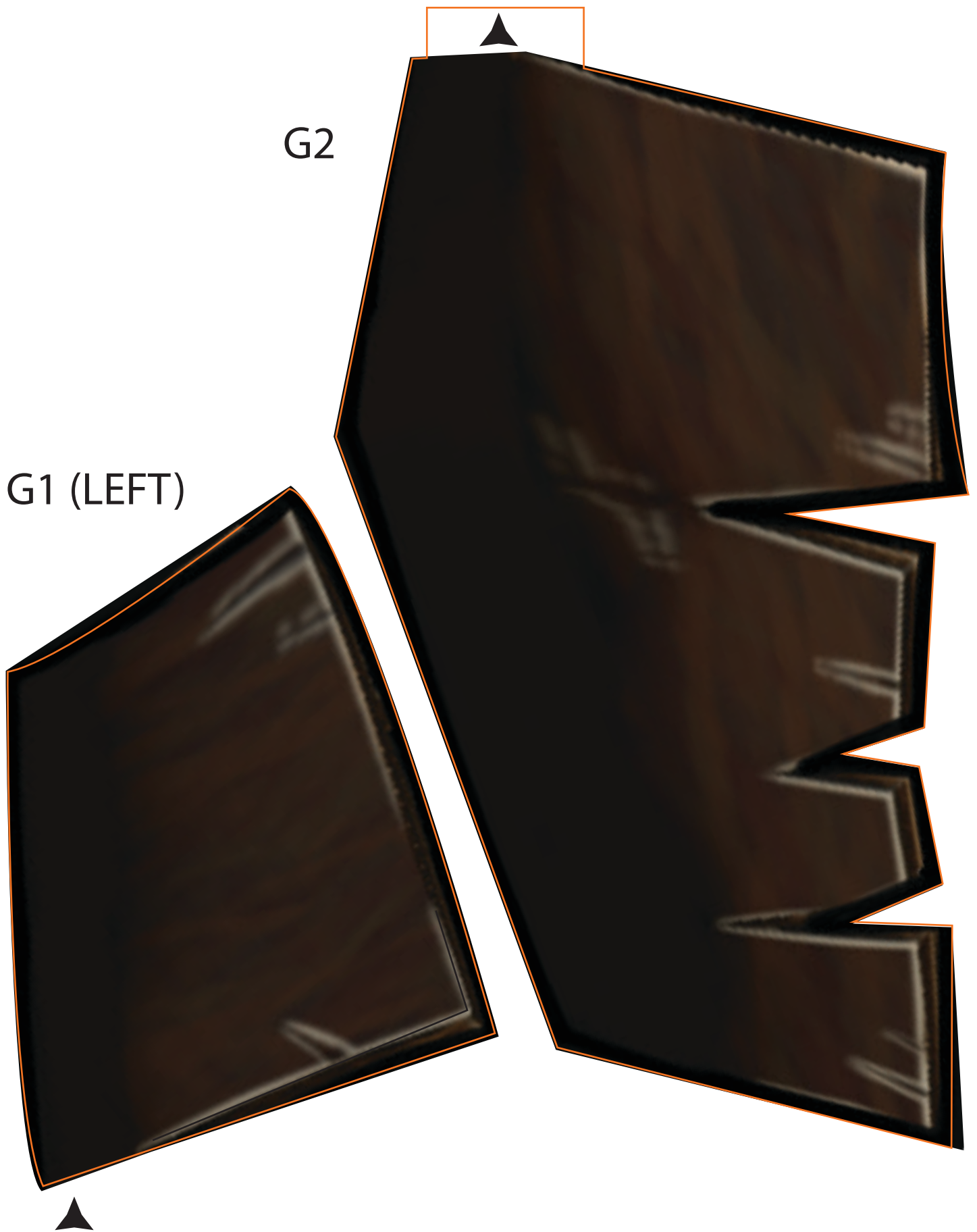
SUBASSEMBLY G

Refer to the diagrams below before construction begins, ensuring that each piece has been correctly identified and dry-fit before applying any adhesive.



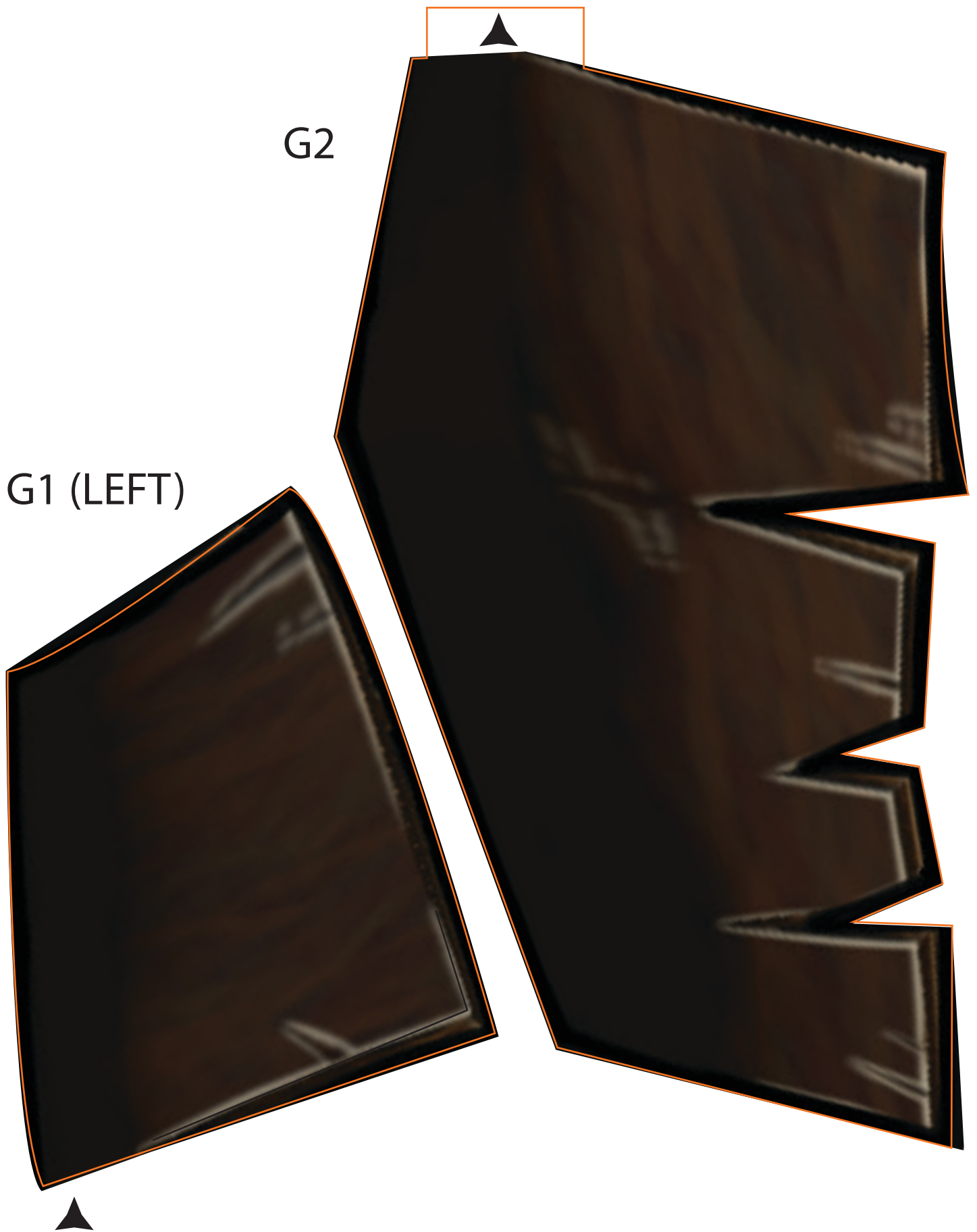
- 1) Apply adhesive to the tab marked in grey on G2.
- 2) Stick G1 on top of G2, fully covering tabs. Ensure pieces are aligned correctly, referring to the diagram below.
- 3) Repeat process to create two identical assemblies.





G2

G1 (LEFT)

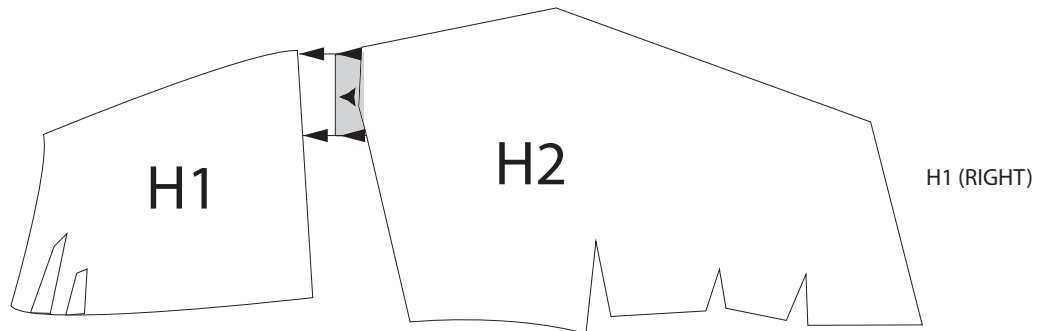


G1 (LEFT)

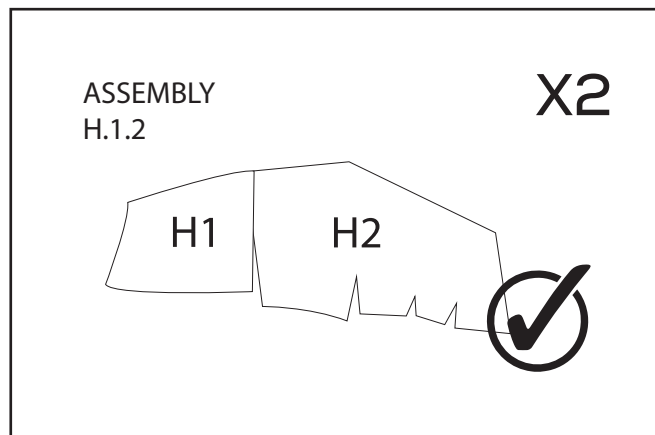
G2

SUBASSEMBLY H

Refer to the diagrams below before construction begins, ensuring that each piece has been correctly identified and dry-fit before applying any adhesive.



- 1) Apply adhesive to the tab marked in grey on H2.
- 2) Stick H1 on top of H2, fully covering tabs. Ensure pieces are aligned correctly, referring to the diagram below.
- 3) Repeat process to create two identical assemblies.





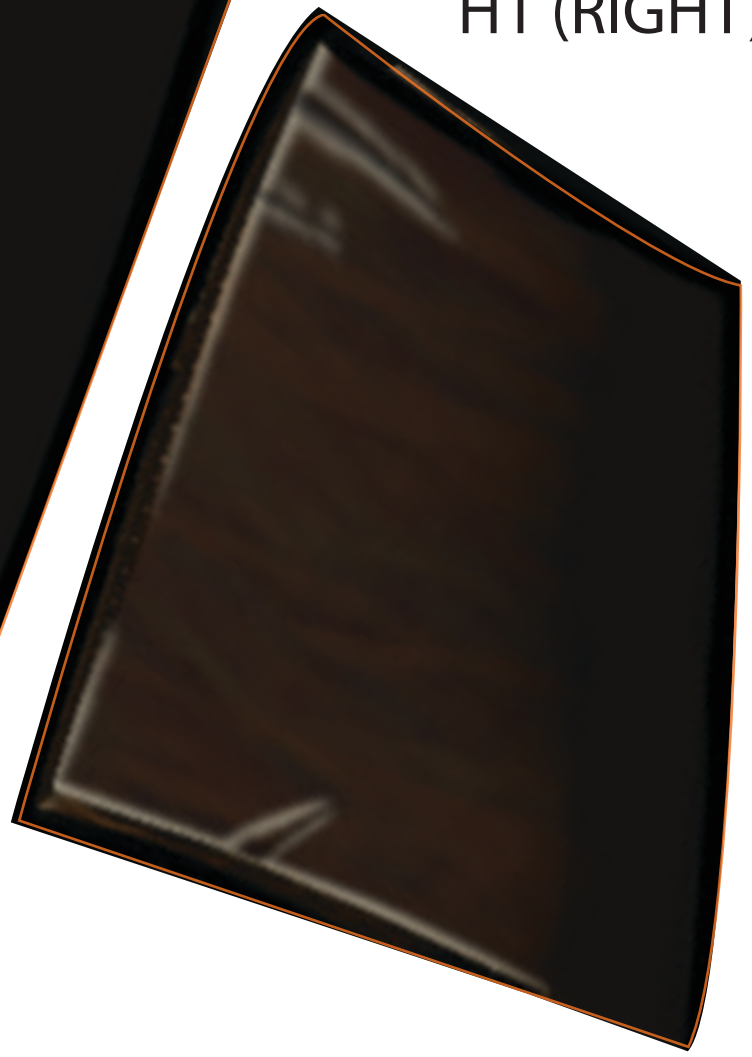
H2



H1 (RIGHT)



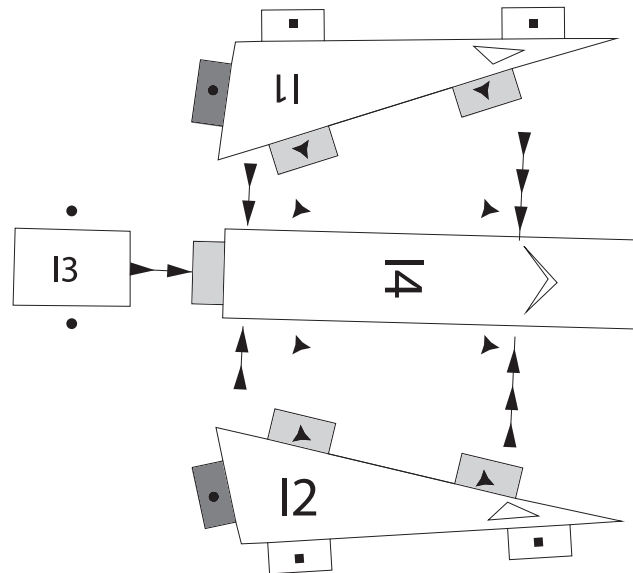
H2



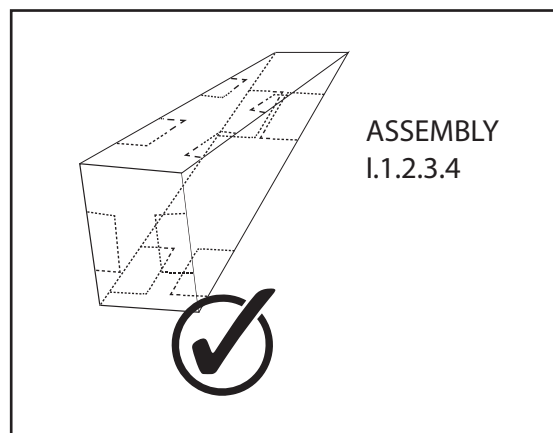
H1 (RIGHT)

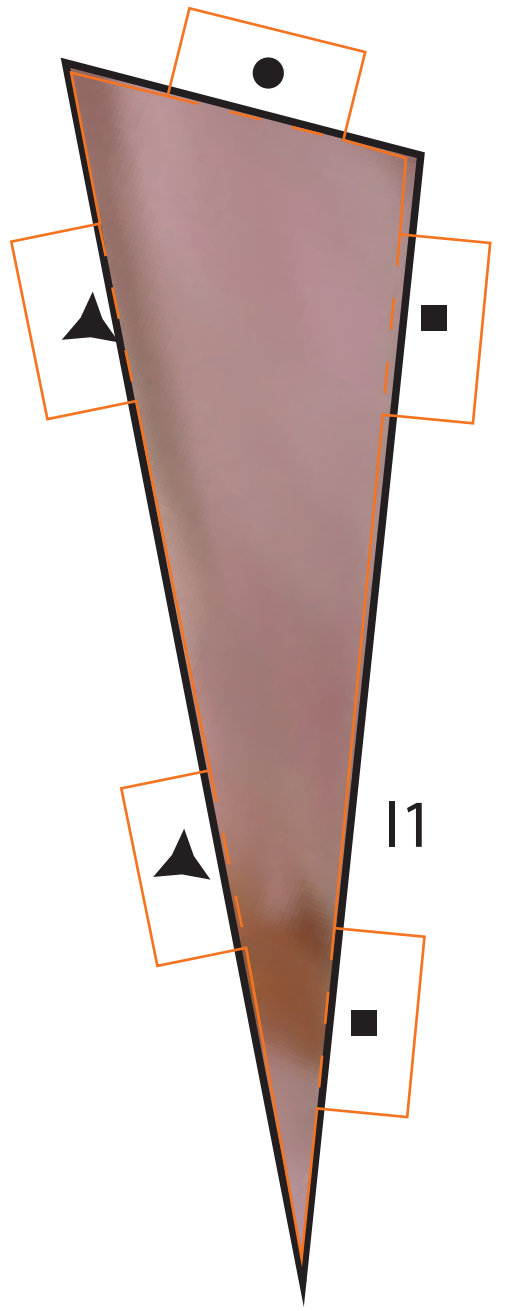
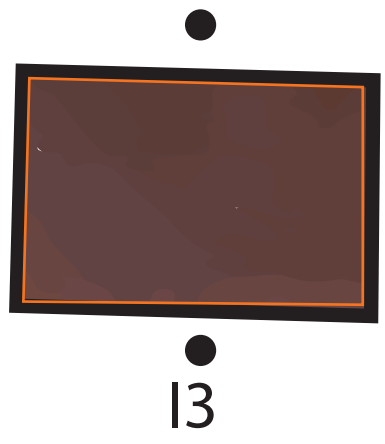
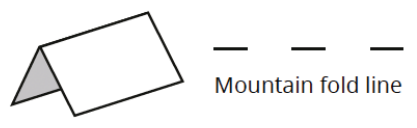
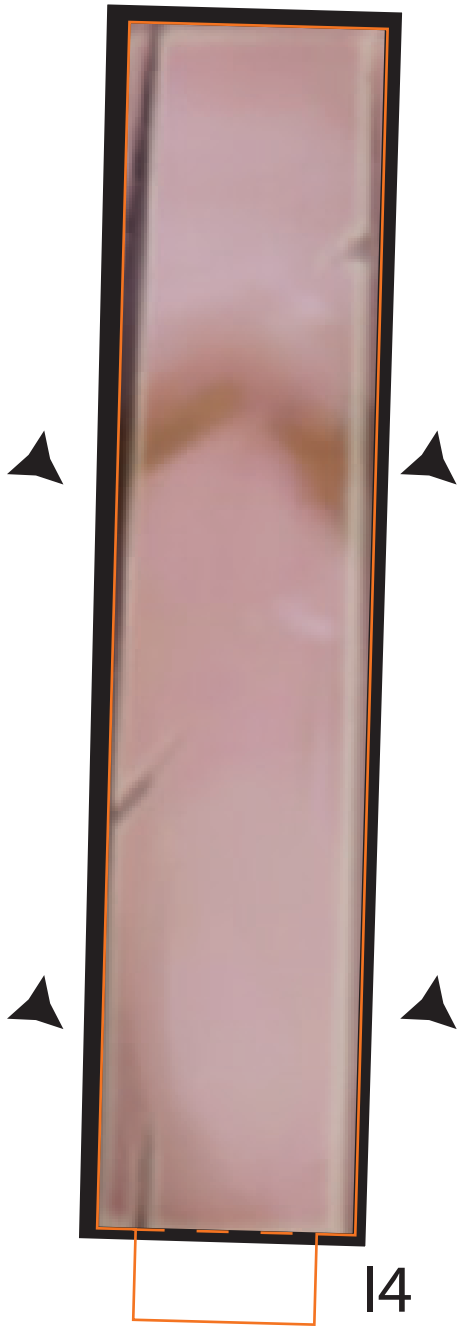
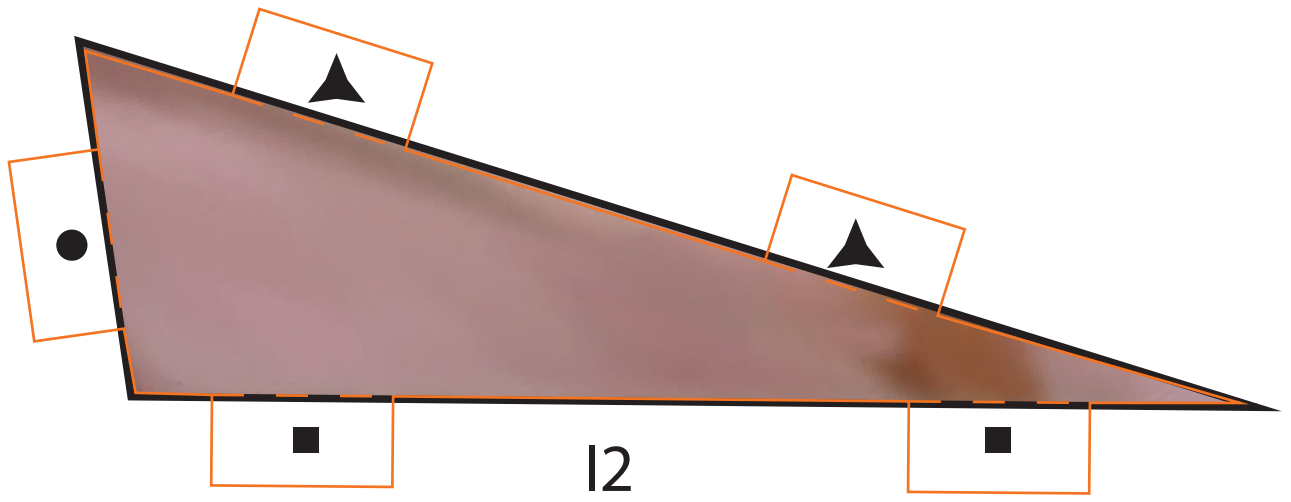
SUBASSEMBLY I

Refer to the diagrams below before construction begins, ensuring that each piece has been correctly identified and dry-fit before applying any adhesive.



- 1) Apply adhesive only to the tabs marked in light grey.
- 2) Apply adhesive to tab on I4. Stick I3 on top of I4, fully covering tab.
- 3) Apply adhesive to tabs on I1 and then stick the I3.4 assembly down on top of I1, fully covering tabs. Repeat with I2.
- 4) Fold I1 and I2 downward, creating a box shape. Apply glue to the dark grey tabs on I1 and I2, then fold down I3 and stick to both tabs.

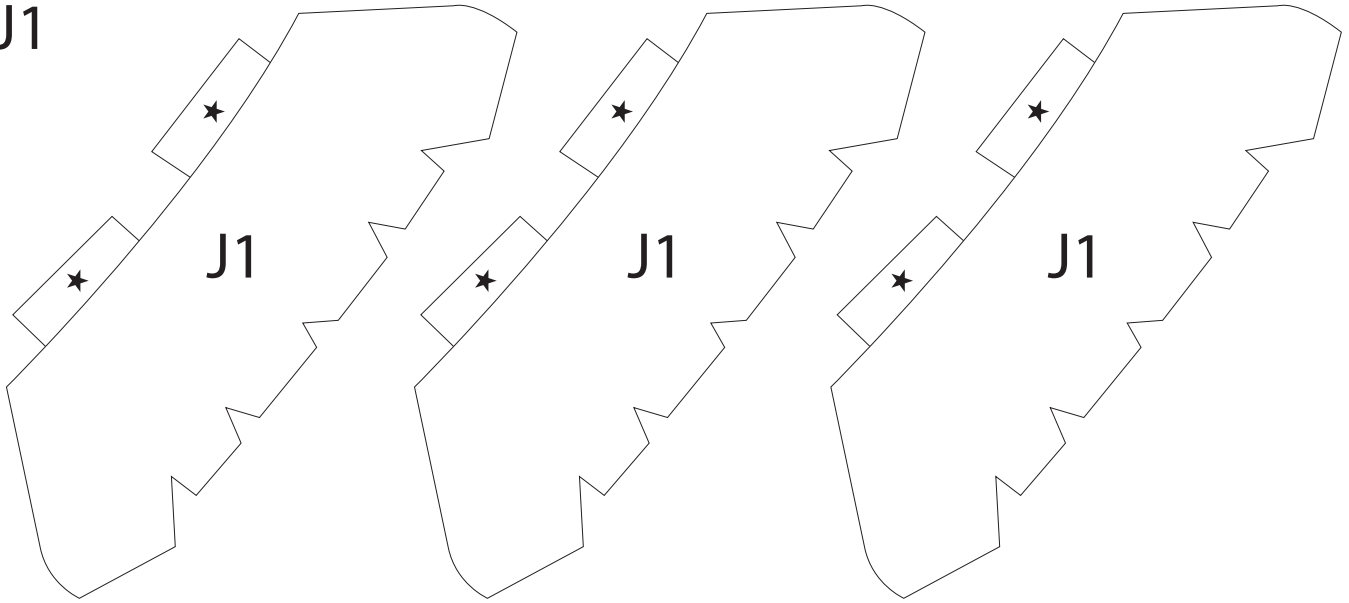




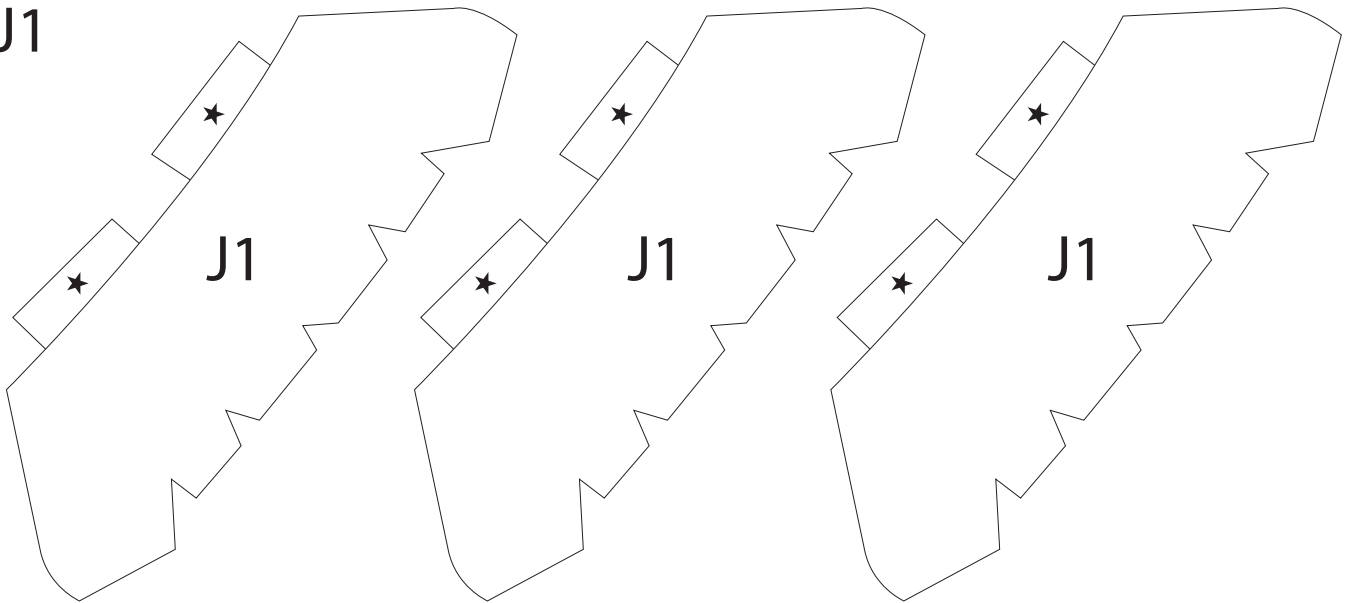
ADDITIONAL HAIR PARTS

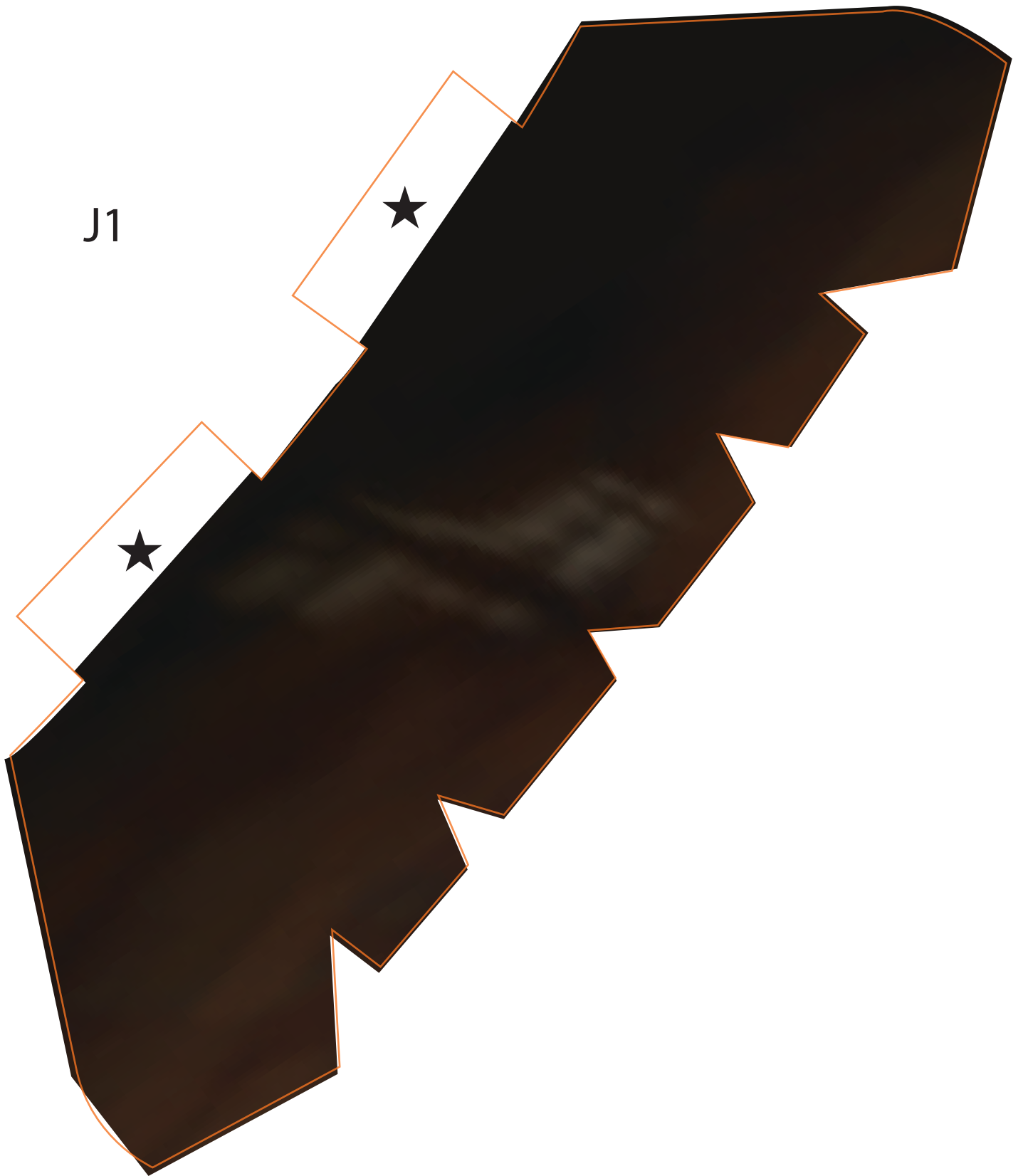
These additional hair pieces will be used in final construction.

J1

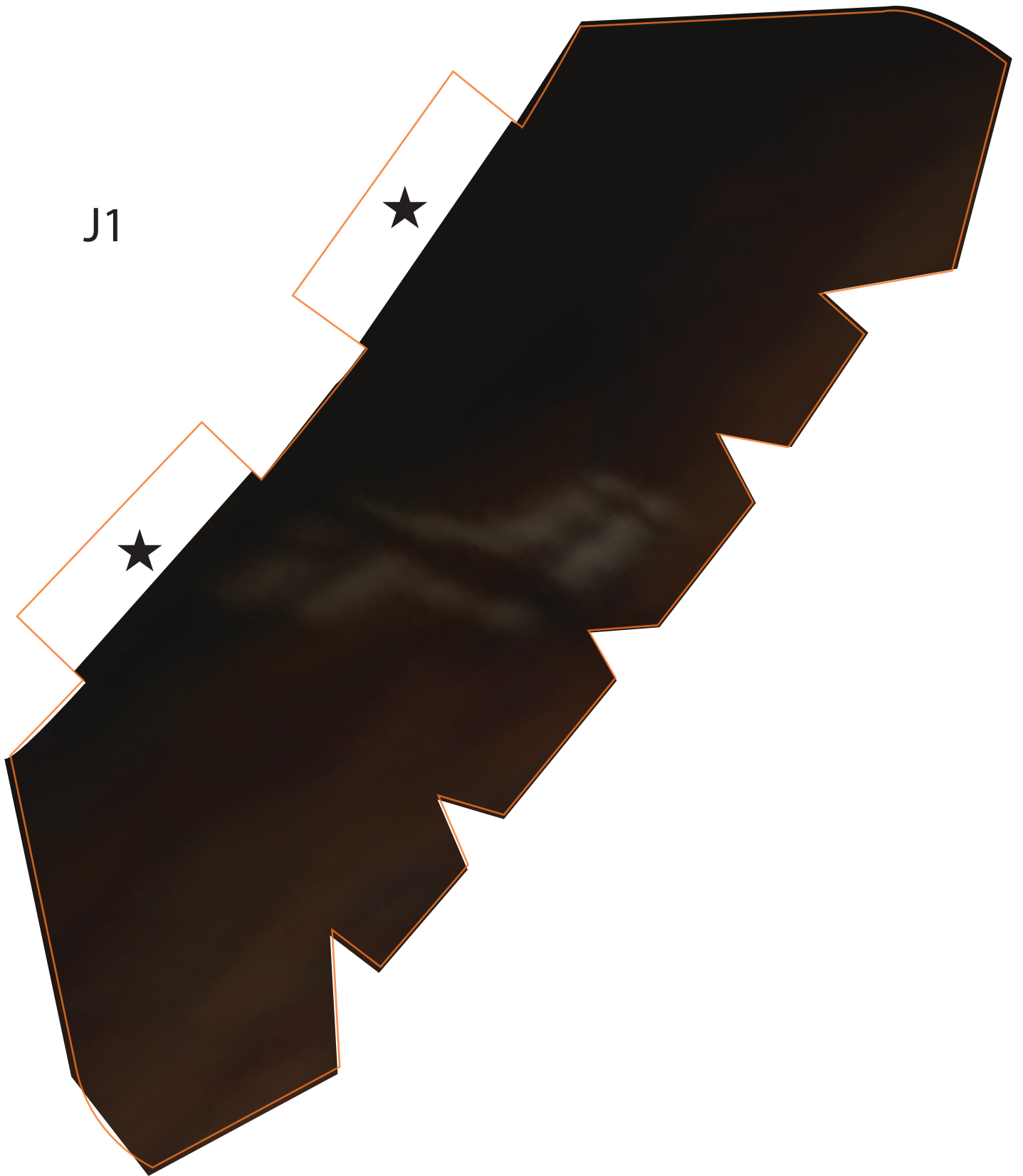


J1

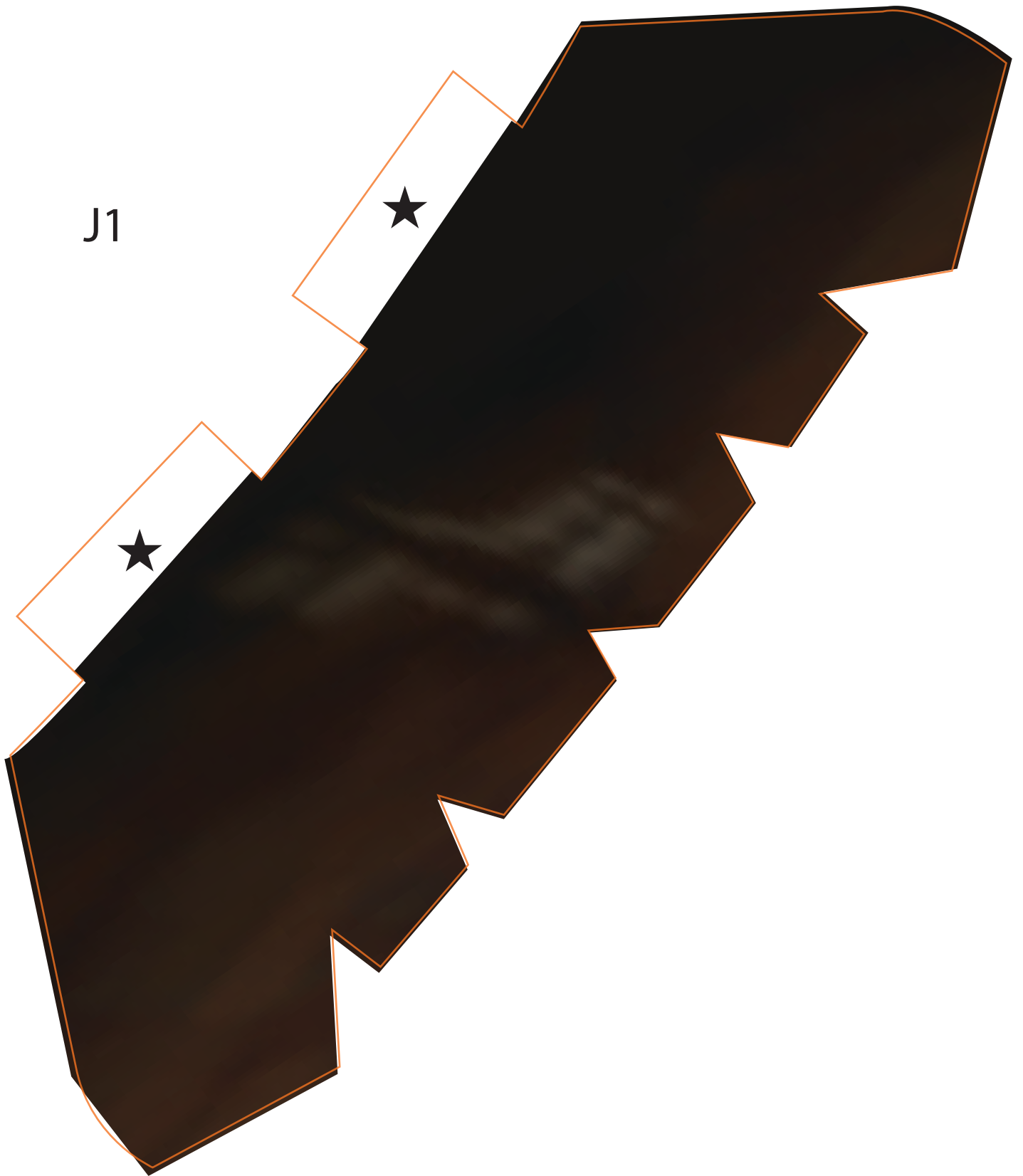




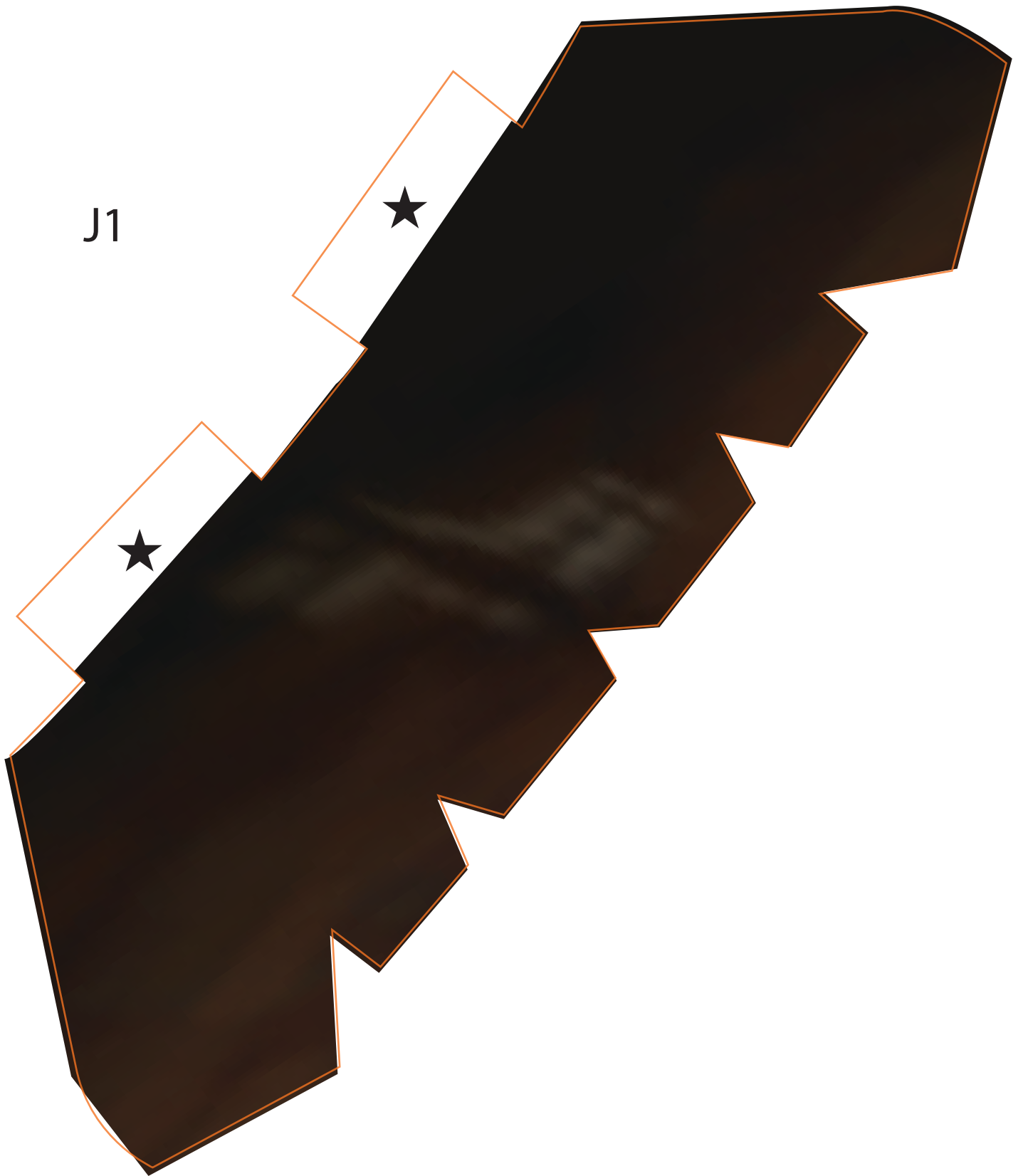
J1



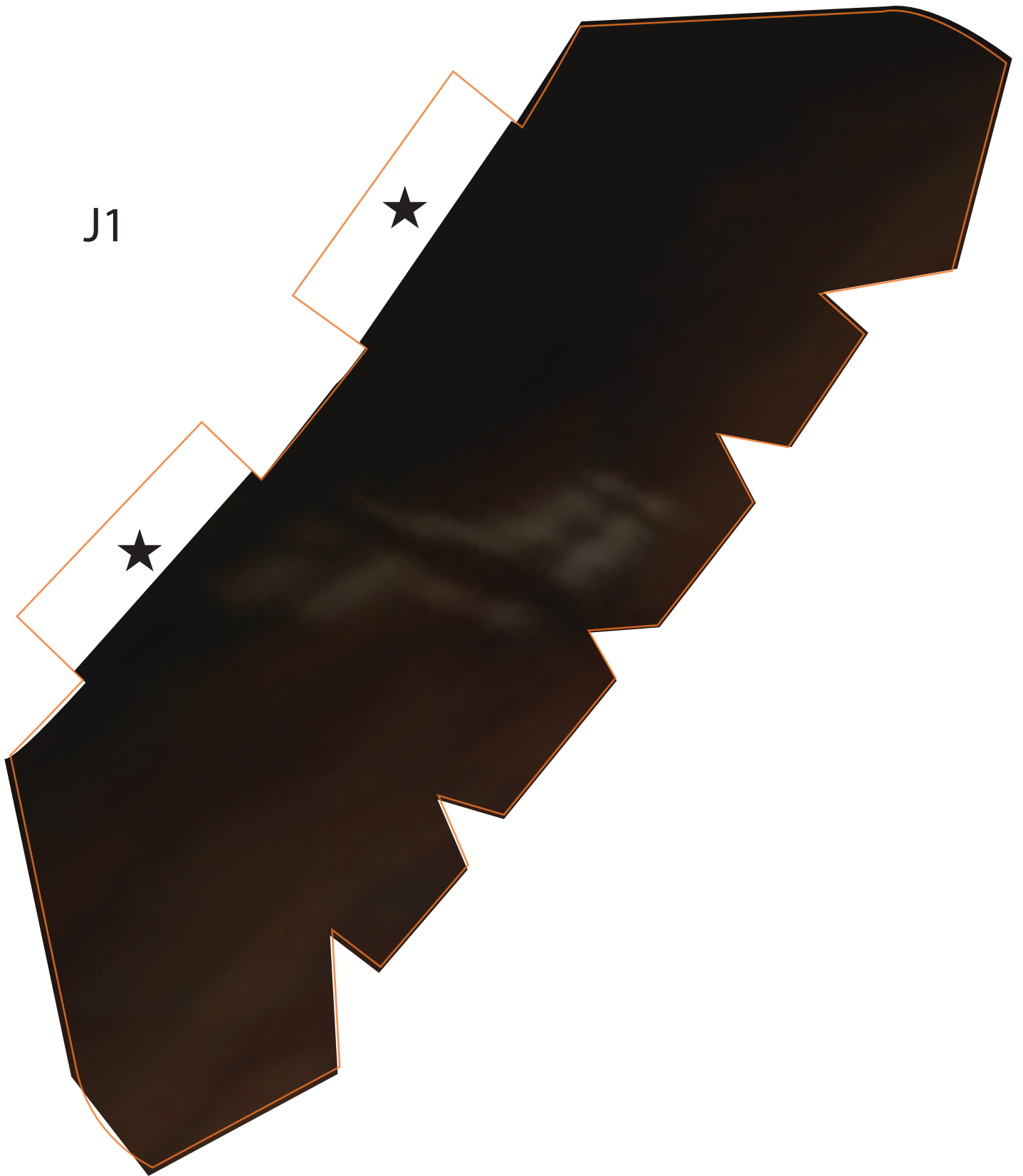
J1



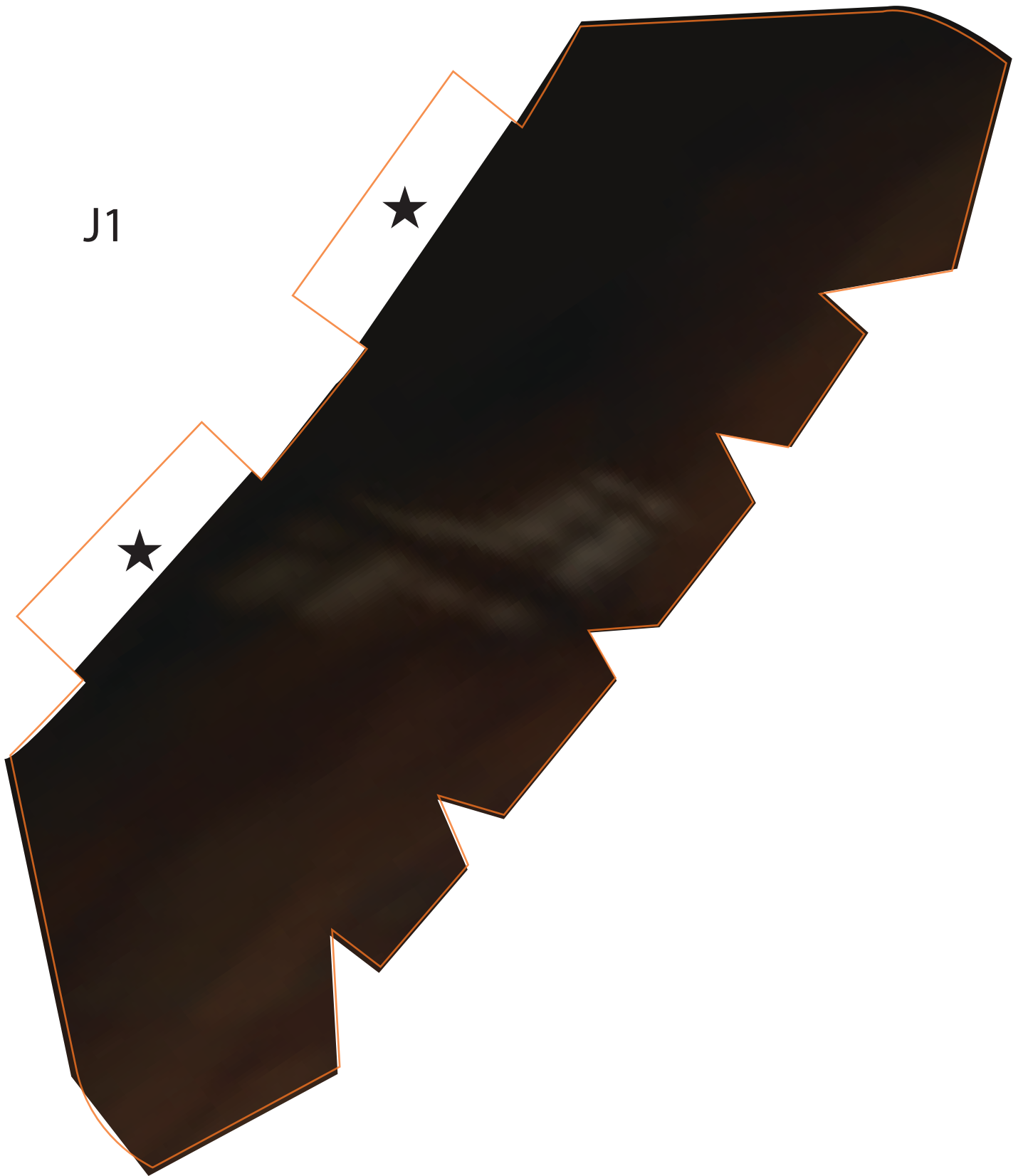
J1



J1



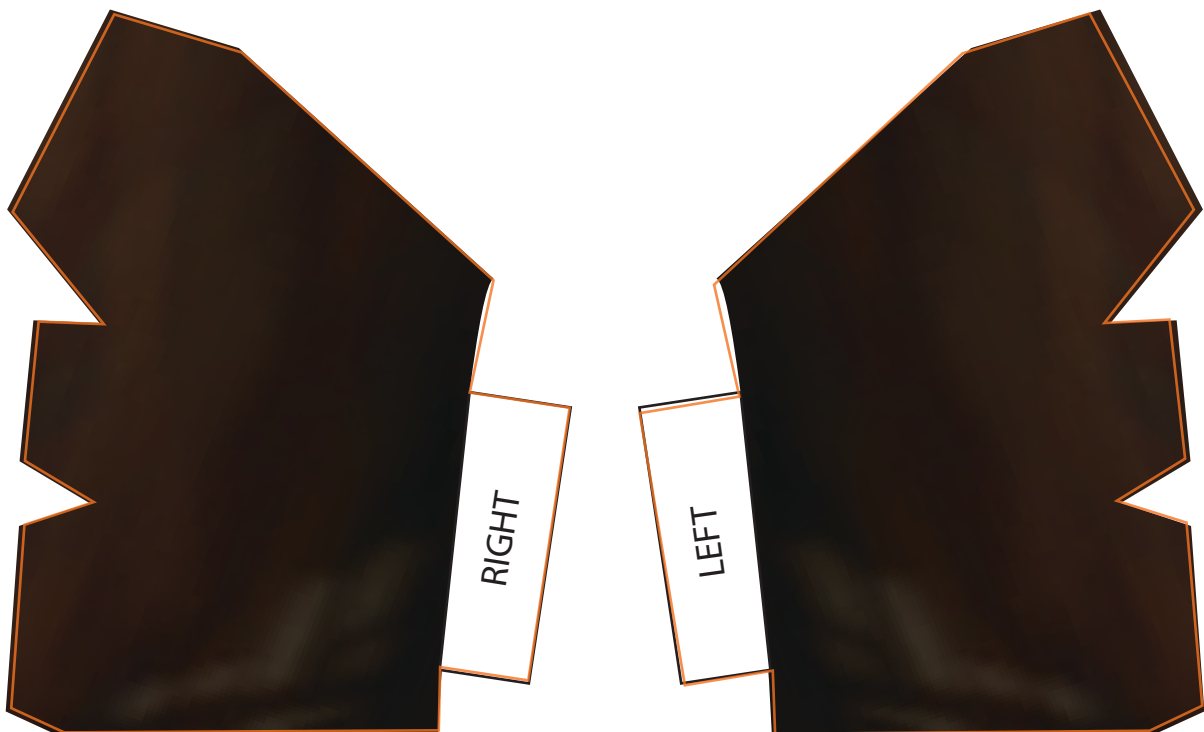
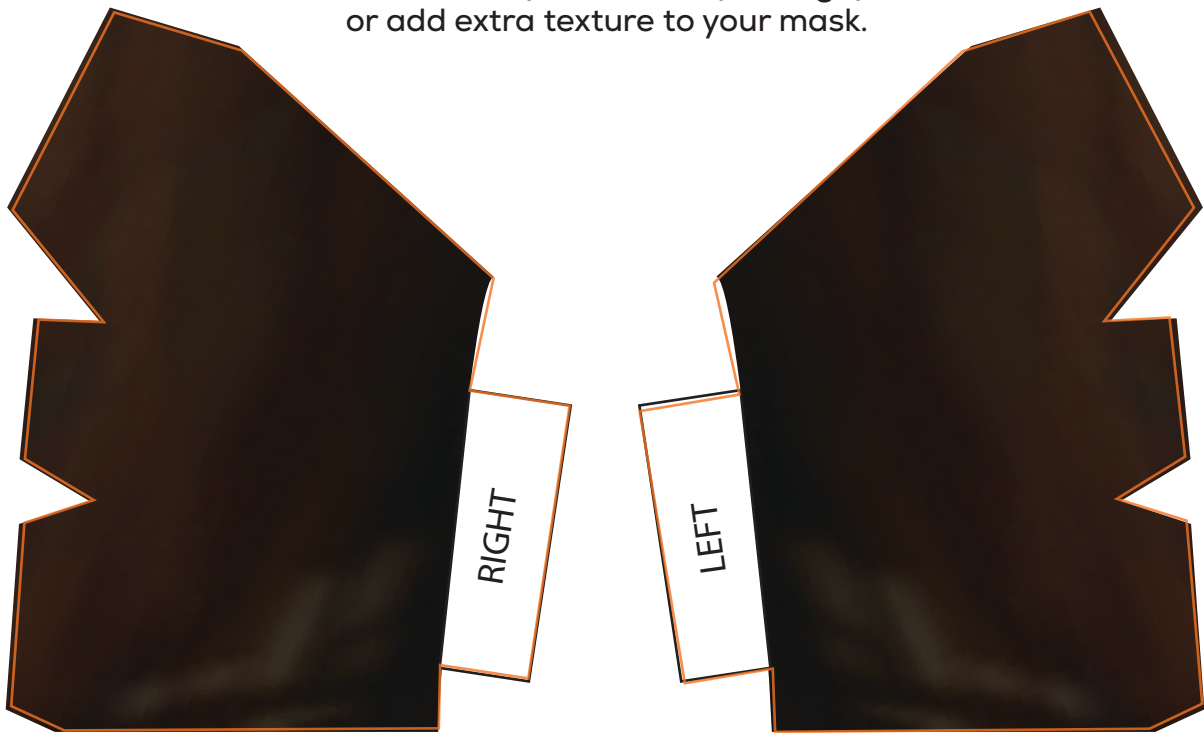
J1



J1

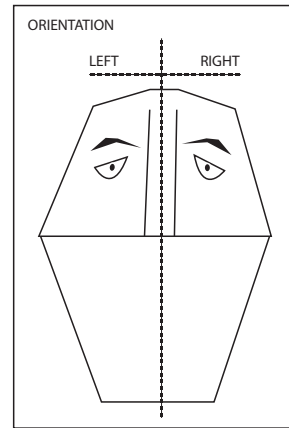
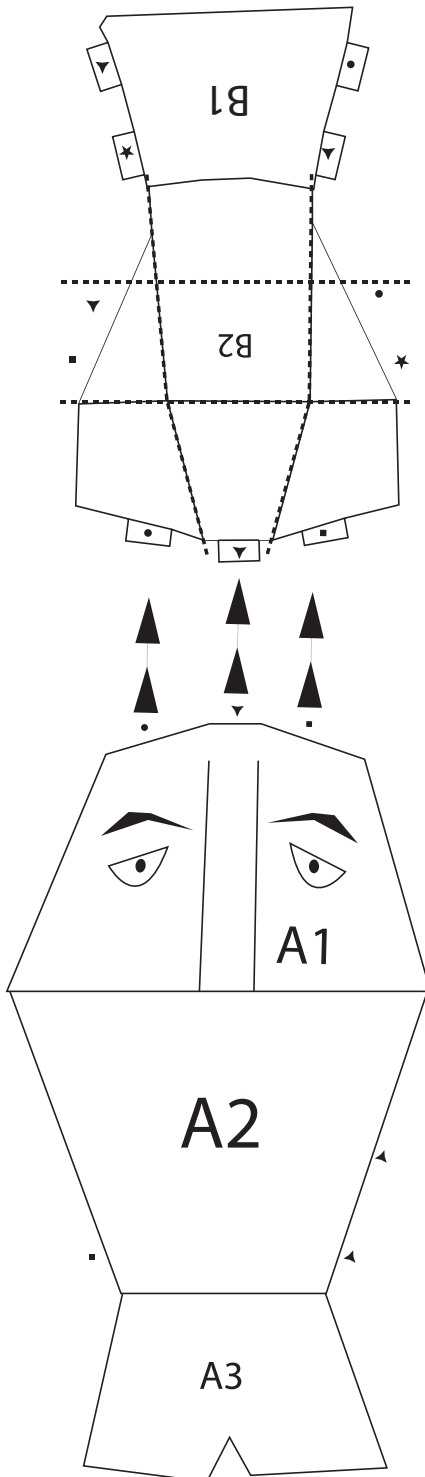
EXTRA HAIR PIECES

These parts are not required for the build, but may be used to patch gaps or add extra texture to your mask.



FINAL ASSEMBLY

STEP 1

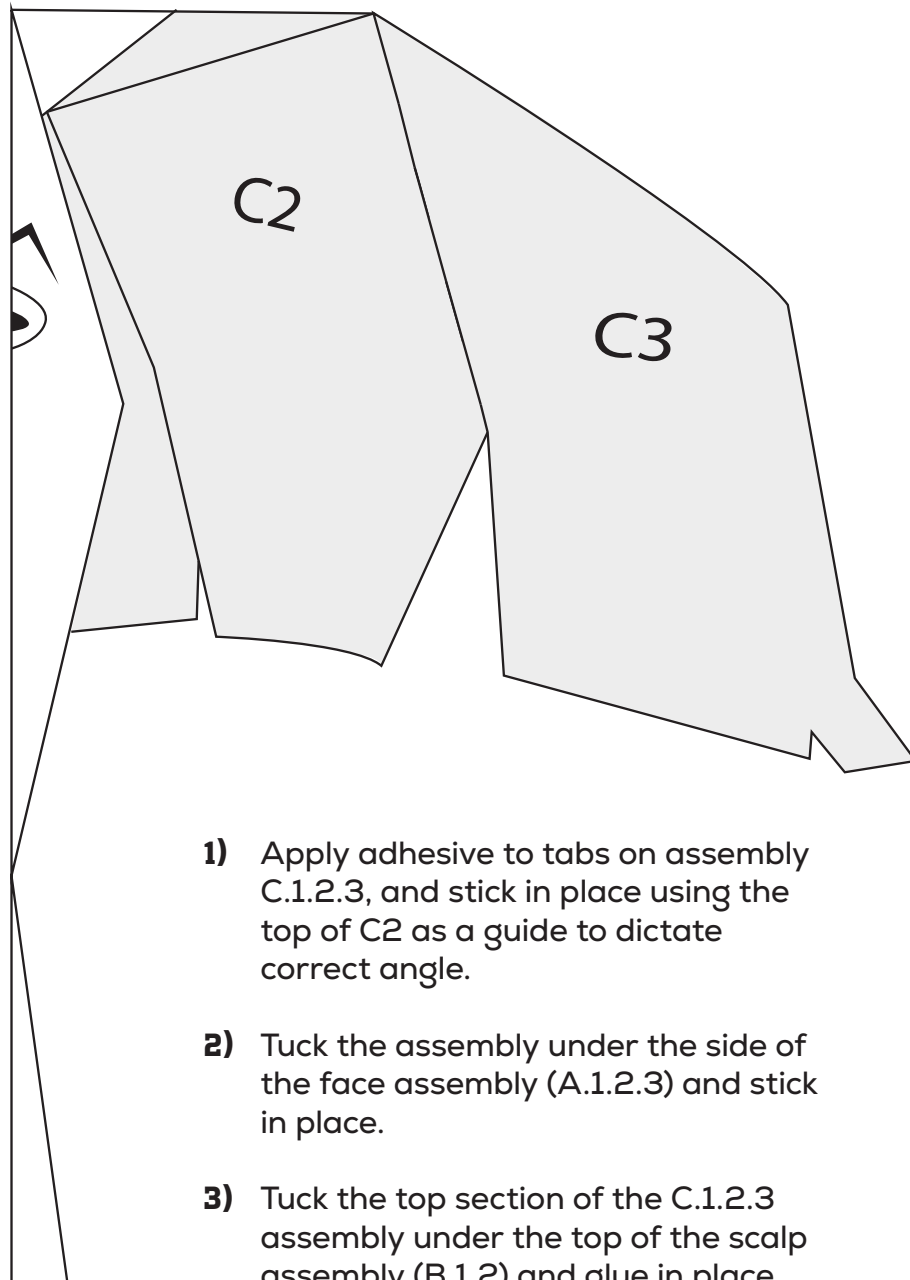


- 1) Fold tabs on assembly B.1.2.
- 2) Glue tabs to assembly A.1.2.3 at a 90 degree angle, aligning edges.



FINAL ASSEMBLY

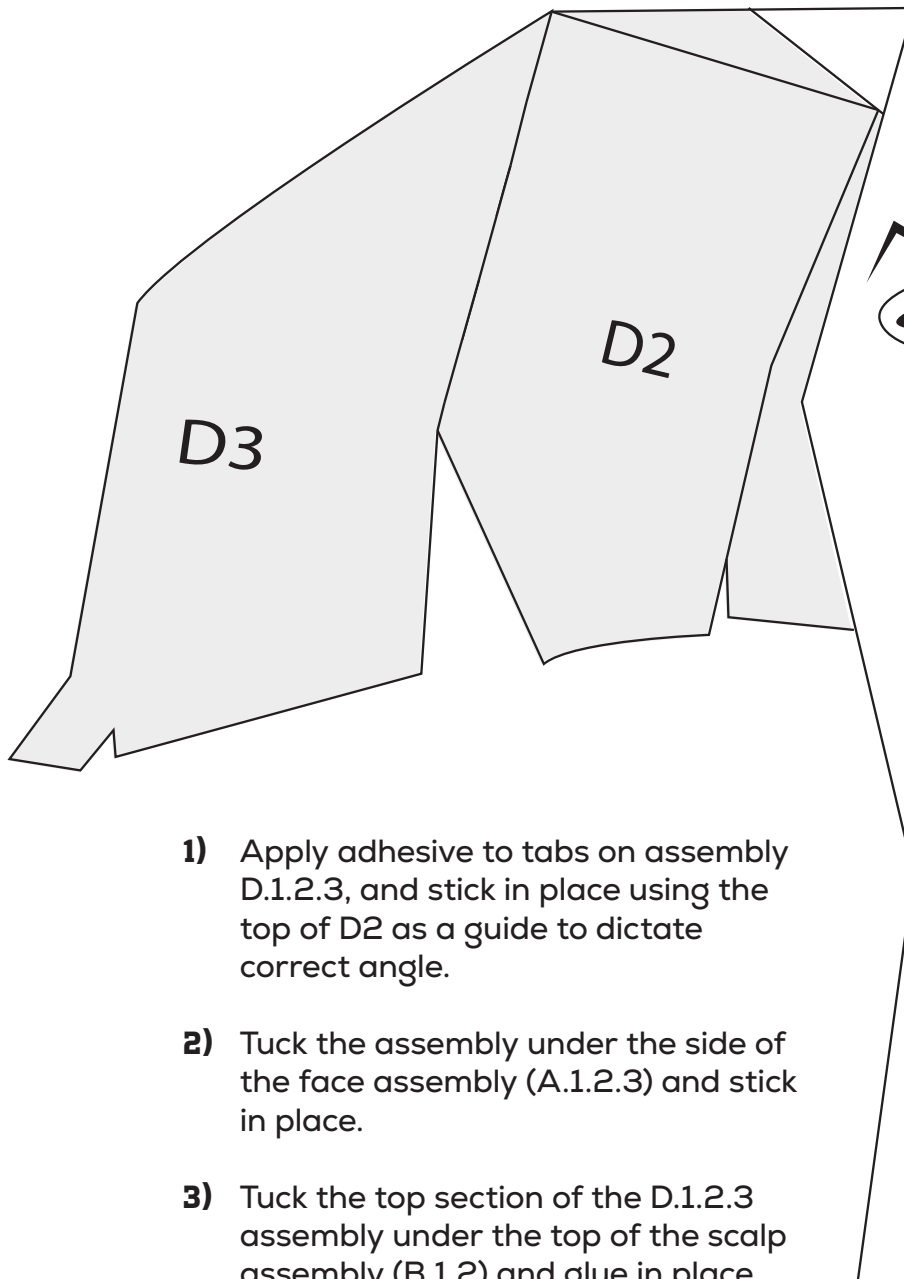
STEP 2



- 1) Apply adhesive to tabs on assembly C.1.2.3, and stick in place using the top of C2 as a guide to dictate correct angle.
- 2) Tuck the assembly under the side of the face assembly (A.1.2.3) and stick in place.
- 3) Tuck the top section of the C.1.2.3 assembly under the top of the scalp assembly (B.1.2) and glue in place.
- 4) Tuck the tabs on C3 under B1 and glue in place.

FINAL ASSEMBLY

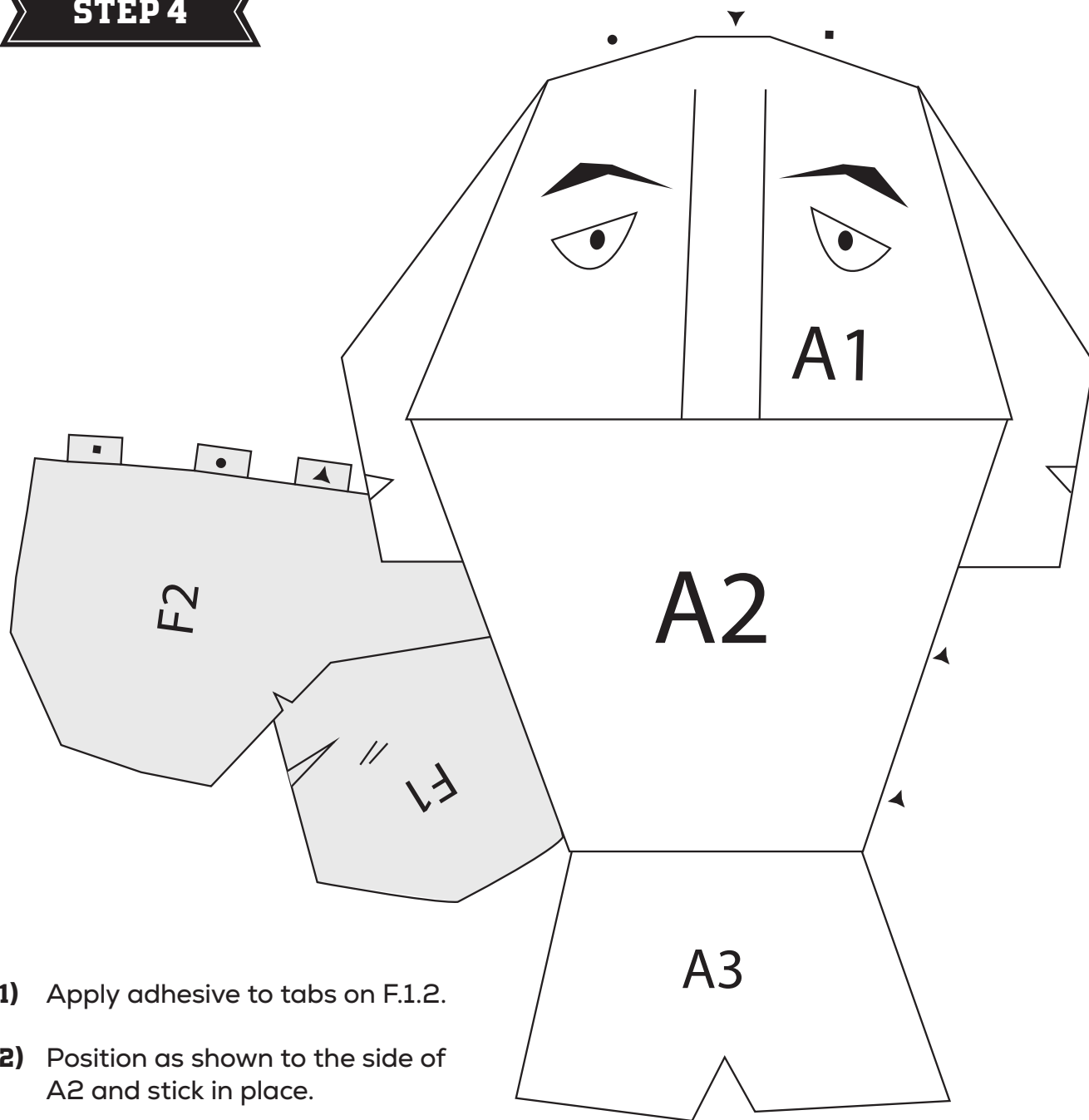
STEP 3



- 1) Apply adhesive to tabs on assembly D.1.2.3, and stick in place using the top of D2 as a guide to dictate correct angle.
- 2) Tuck the assembly under the side of the face assembly (A.1.2.3) and stick in place.
- 3) Tuck the top section of the D.1.2.3 assembly under the top of the scalp assembly (B.1.2) and glue in place.
- 4) Tuck the tabs on D3 under B1 and glue in place.

FINAL ASSEMBLY

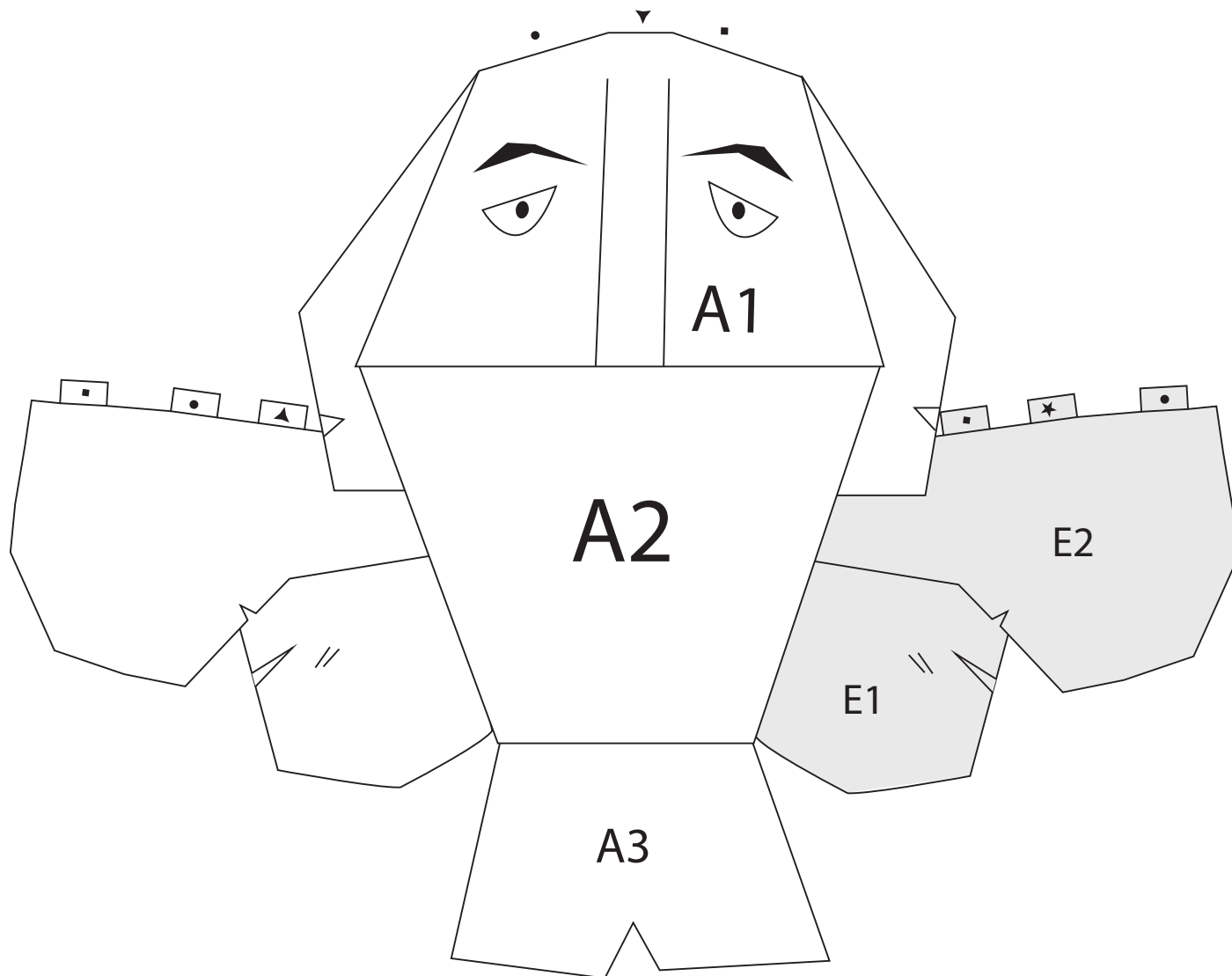
STEP 4



- 1) Apply adhesive to tabs on F.1.2.
- 2) Position as shown to the side of A2 and stick in place.
- 3) Tuck all remaining tabs under D.1.2.3 and stick in place.

FINAL ASSEMBLY

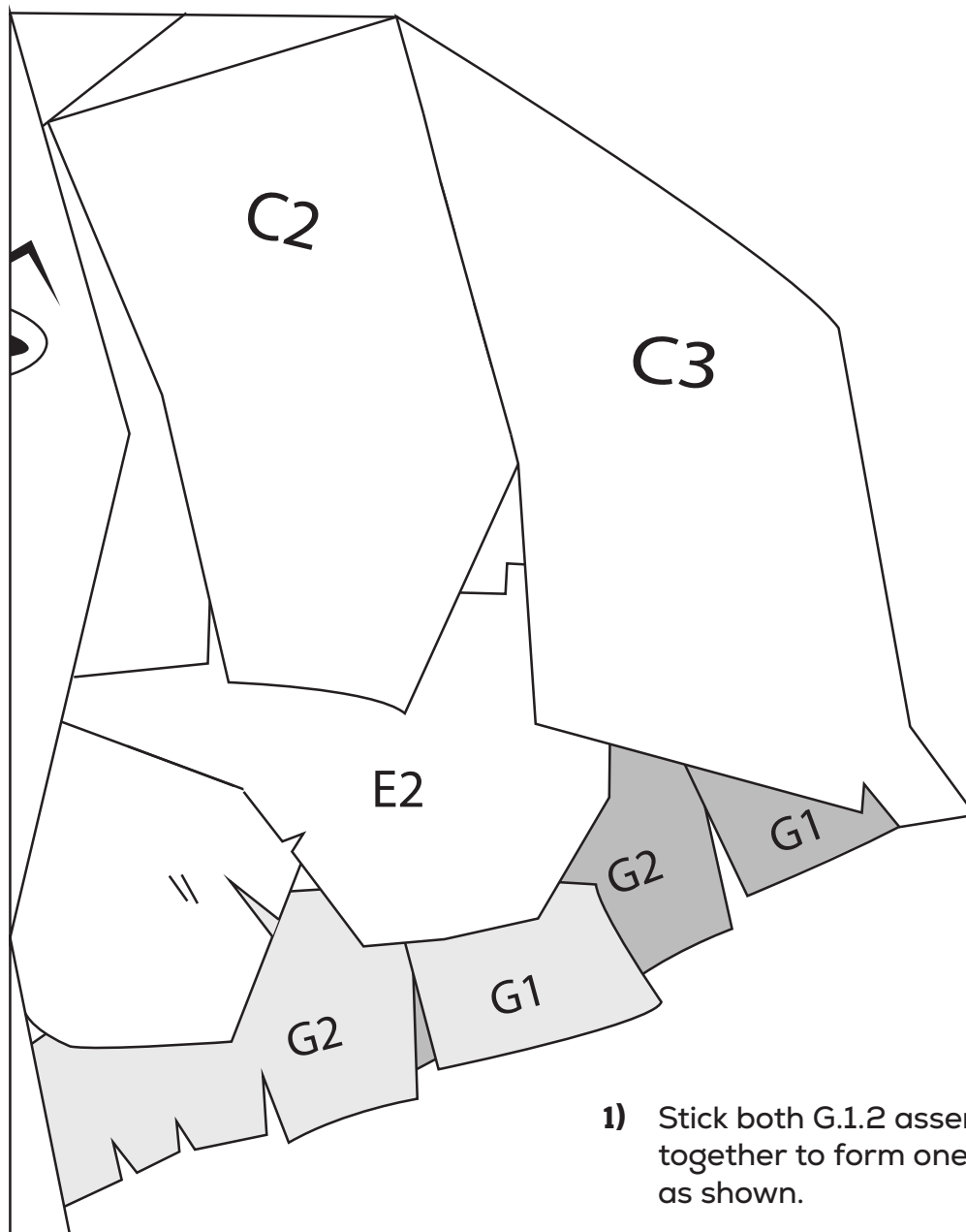
STEP 5



- 1) Apply adhesive to tabs on E.1.2.
- 2) Position as shown to the side of A2 and stick in place.
- 3) Tuck all remaining tabs under C.1.2.3 and stick in place.

FINAL ASSEMBLY

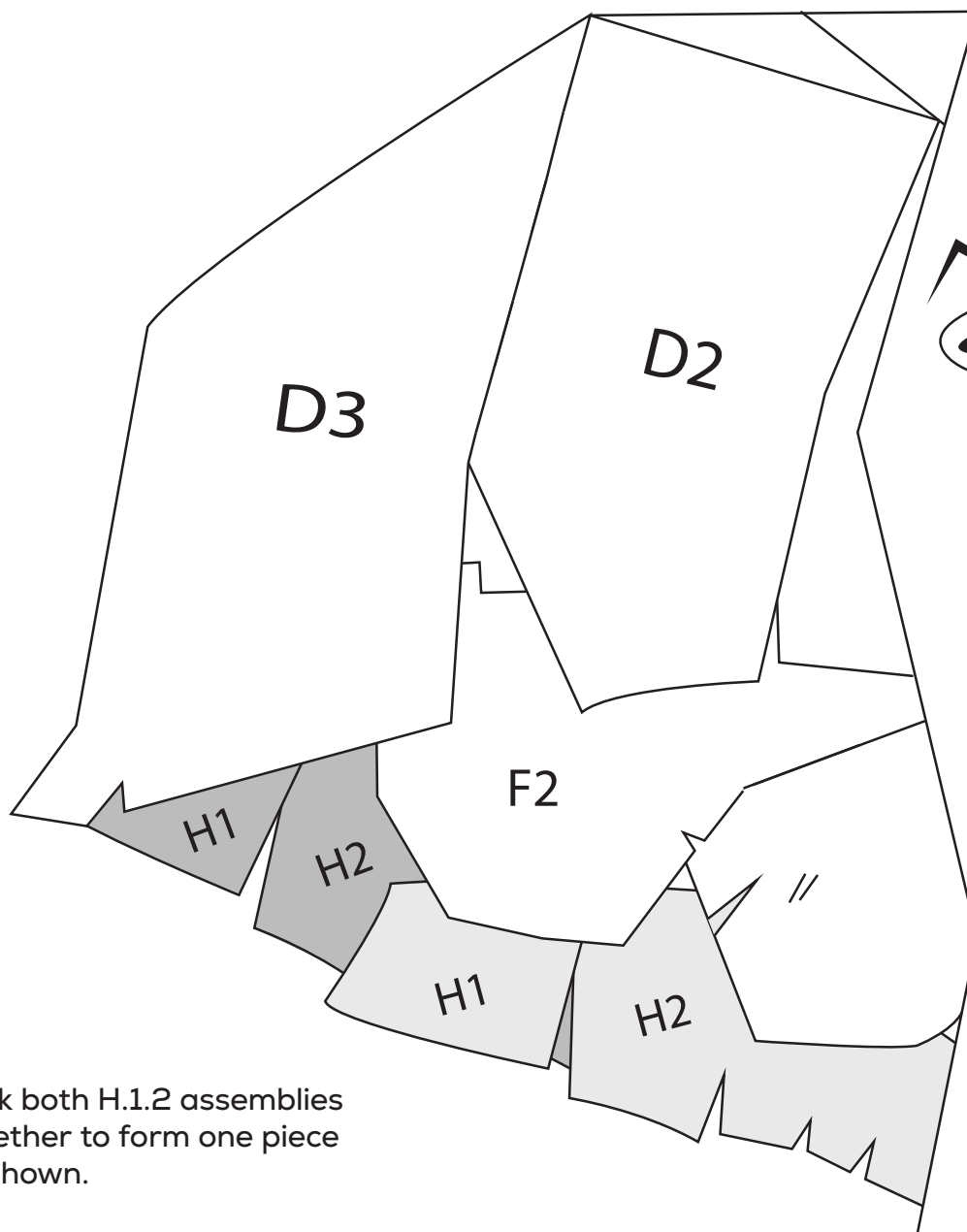
STEP 6



- 1) Stick both G.1.2 assemblies together to form one piece as shown.
- 2) Position as shown under E.1.2 and stick in place.

FINAL ASSEMBLY

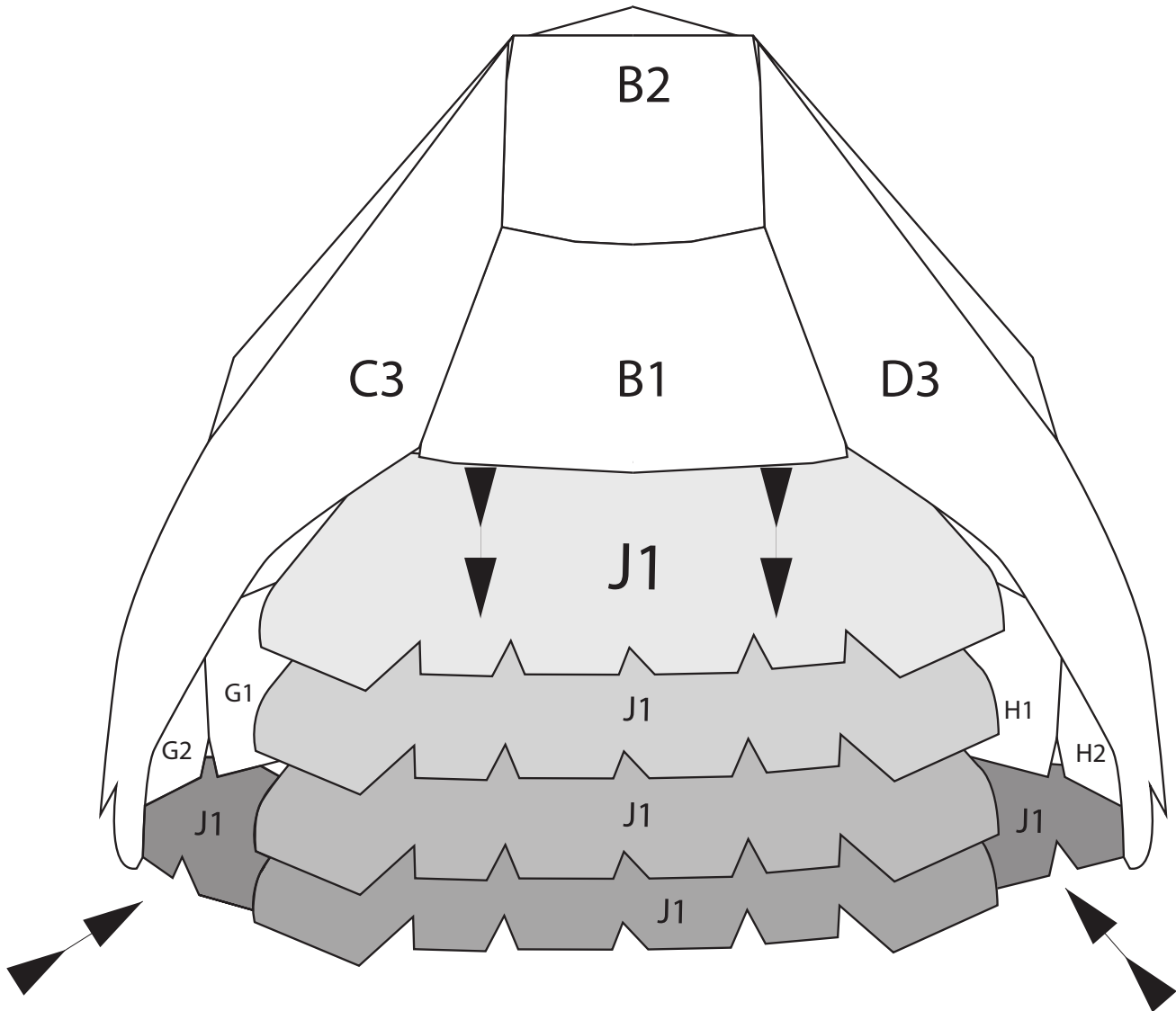
STEP 7



- 1) Stick both H.1.2 assemblies together to form one piece as shown.
- 2) Position as shown under F.1.2 and stick in place.

FINAL ASSEMBLY

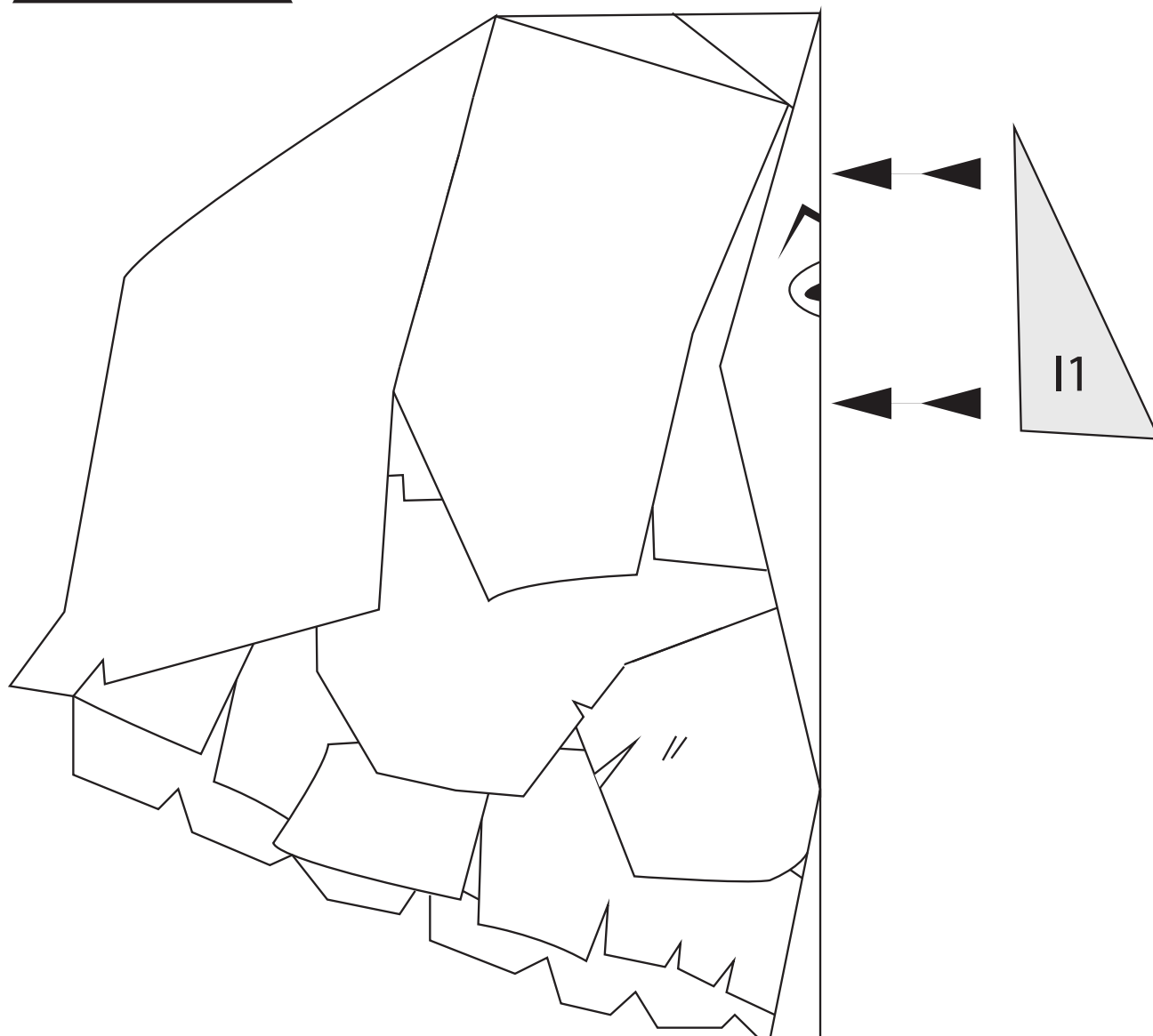
STEP 8



- 1) Stick 4 of the J1 pieces one under the other as shown, starting at the center of B1.
- 2) Stick the remaining two J pieces either side, filling the gaps and connecting the back of the hair to the rest of the mask.

FINAL ASSEMBLY

STEP 9



- 1)** Apply adhesive to the tabs on the back side of assembly I.1.2.3.4 (nose) and stick in position, using the printed nose on the face for alignment.
- 2)** Put the mask on your head, strike a pose and feel like a true Quidditch Champion as you celebrate in style!

FINISHED MASK

