

The Colorado Rare Plant Technical Committee

presents:

4th Annual

Rare Plant Symposium

Sponsored by:

Colorado Native Plant Society

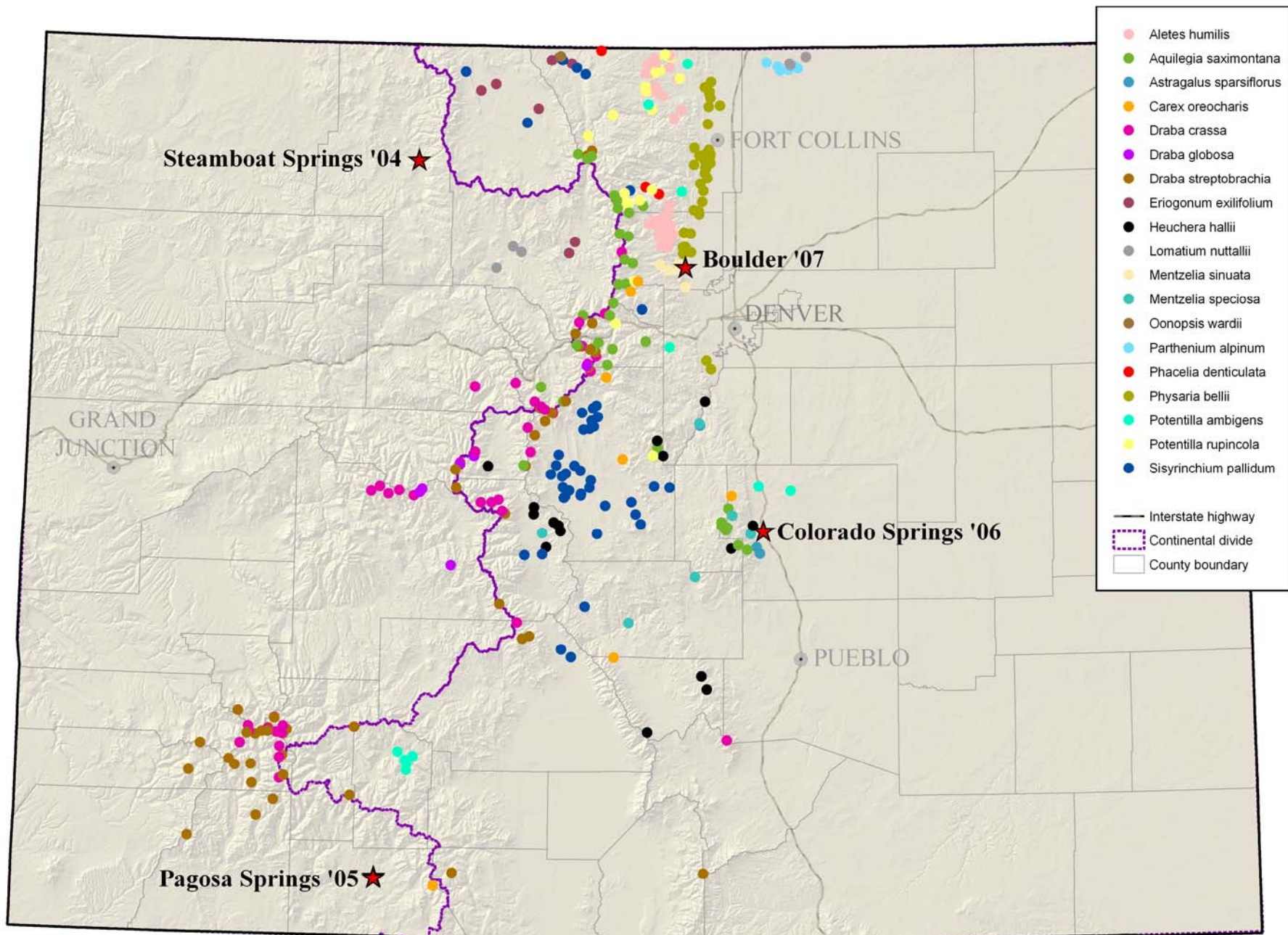
University of Colorado Herbarium

US Fish and Wildlife Service

Colorado Natural Heritage Program

USDA Forest Service





Aletes humilis

Larimer Aletes

Federal status: None

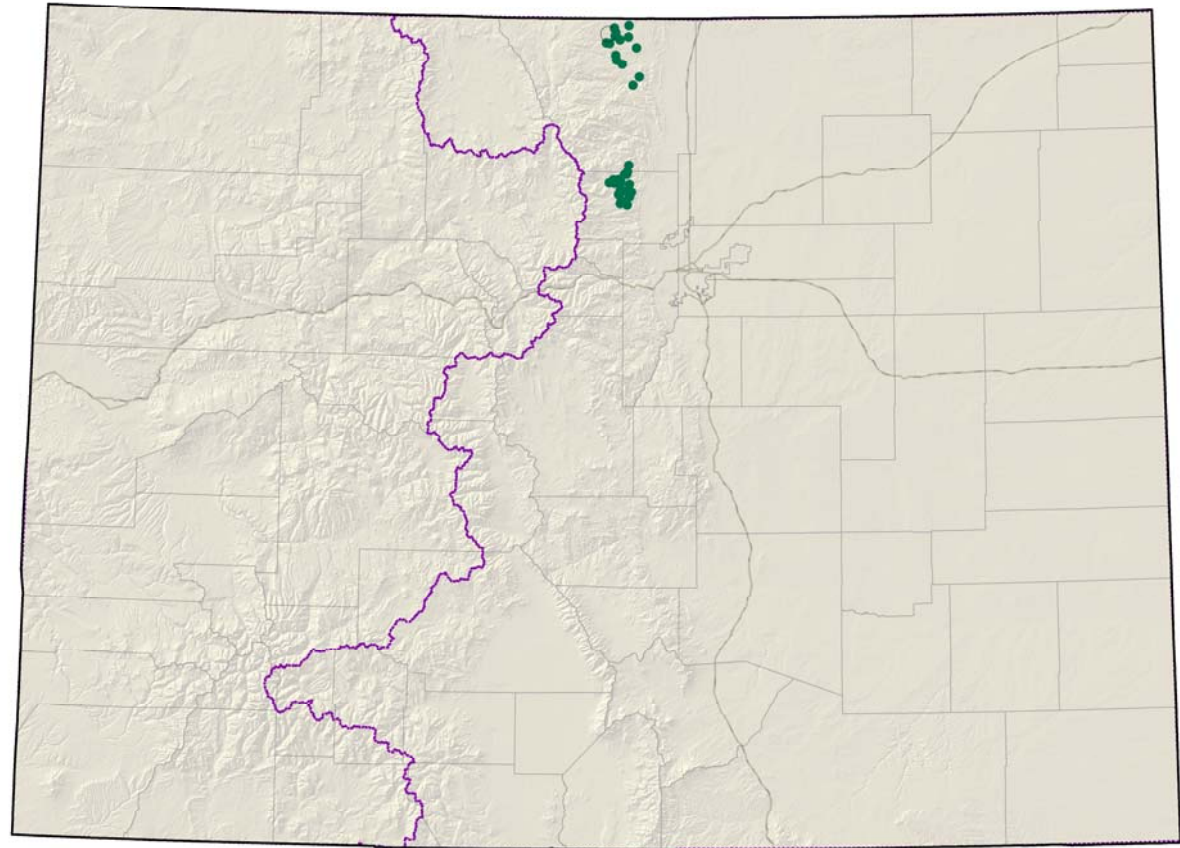
Heritage ranks: G2G3/S2S3

Global distribution:

Colorado (Larimer and Boulder counties). Possibly extending into southern Wyoming.



Aletes humilis



Last observed in Colorado:	June 2007
Colorado occurrences:	36, 1 historical
Colorado individuals:	15,000+
Primary threats:	Recreational uses are the primary threat.
Land ownership/management:	Private 67%, TNC 33%

Aletes nuttallii = *Lomatium nuttallii*

Nuttall's Desert-parsley

Federal status: None

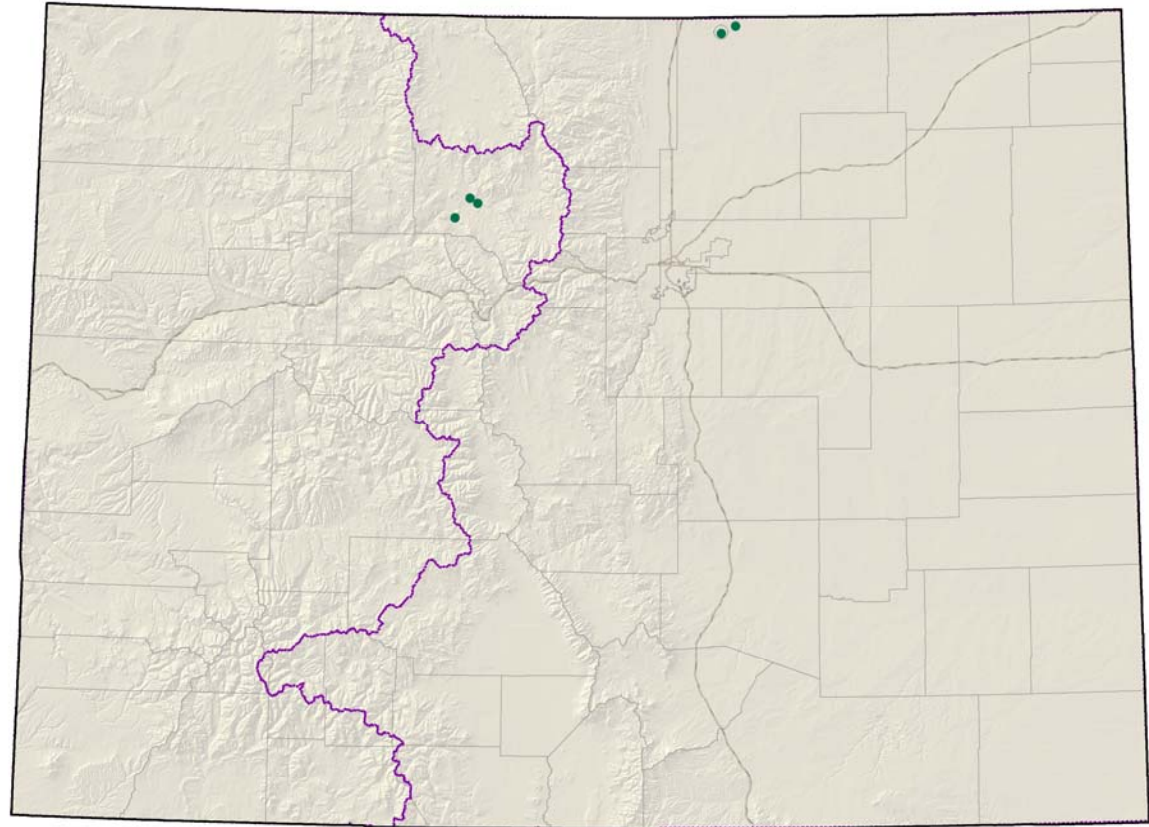
Heritage ranks: G3/S1

Global distribution:

Montana, Wyoming, Nebraska,
South Dakota (historical),
Colorado (Grand and Weld
counties).



Aletes nuttallii



Last observed in Colorado:	June 2005
Colorado occurrences:	6, 1 historical
Colorado individuals:	6,500
Primary threats:	ORV use, weeds, cattle trampling
Land ownership/management:	State 50%, Private 50%

Aquilegia saximontana

Rocky Mountain Columbine

Federal status: None

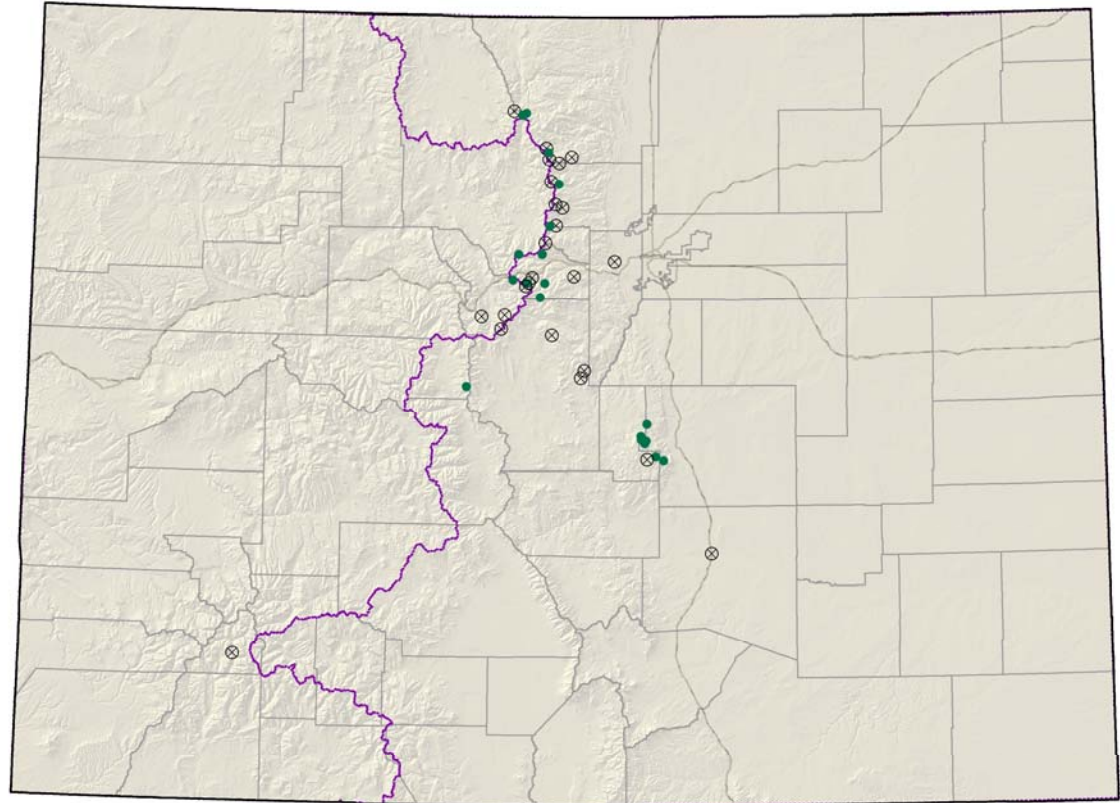
Heritage ranks: G3/S3

Global distribution:

Colorado (Boulder, Clear Creek, El Paso, Gilpin, Jackson, Lake, Larimer, Park, Pueblo, San Juan, Summit, and Teller counties).



Aquilegia saximontana



Last observed in Colorado:

July 2007

Colorado occurrences:

46, 23 historical

Colorado individuals:

1,500

Primary threats:

recreational uses, road work pika grazing,
rock garden collecting

Land ownership/management:

USFS 70%, NPS 15%, Private 12%,
State 4%

Astragalus sparsiflorus

Front Range Milk-vetch

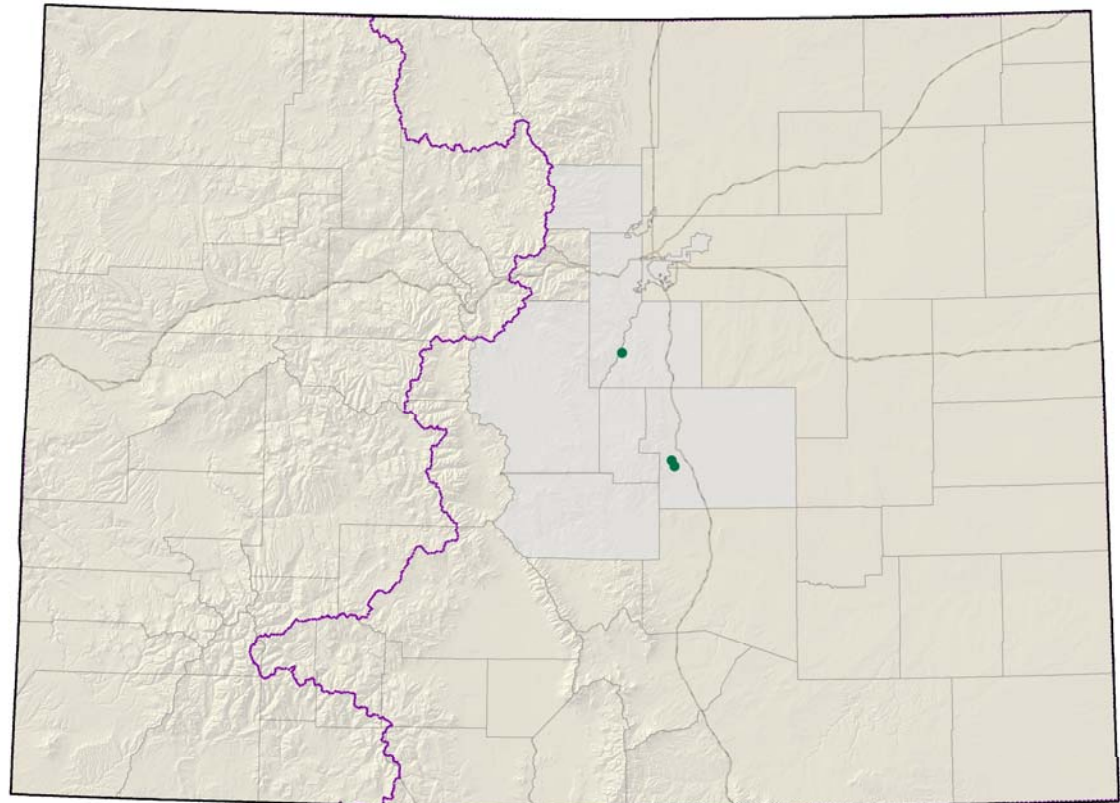
Federal status: None

Heritage ranks: G3?/S3?

Global distribution:

Colorado endemic (Douglas,
Denver, El Paso, Park, Fremont,
Teller, Boulder,
and Jefferson counties).

Astragalus sparsiflorus



Last observed in Colorado:	July 2005
Colorado occurrences:	3
Colorado individuals:	unknown
Primary threats:	unknown
Land ownership/management:	Private 100%

Bolophyta alpina = *Parthenium alpinum*
Alpine Fever-few

Federal status: None

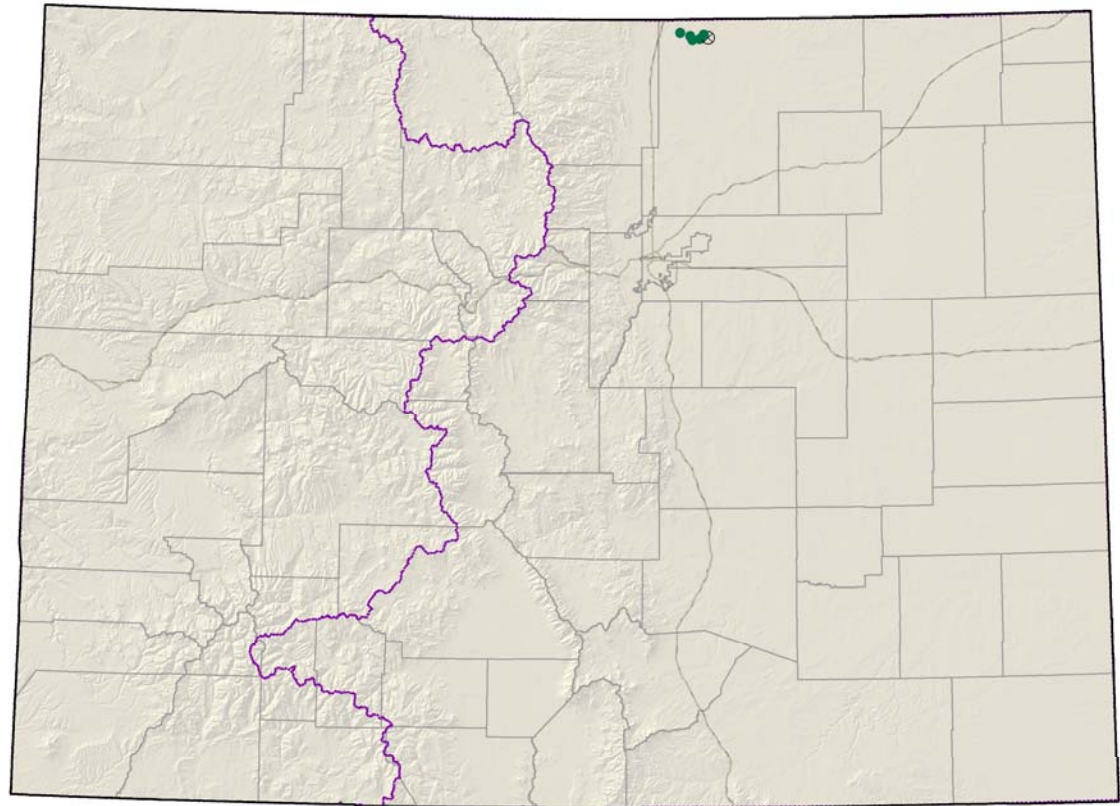
Heritage ranks: G3/S1

Global distribution:

Wyoming, New Mexico,
Colorado (Weld County)



Bolophyta alpina



Last observed in Colorado:

June 2007

Colorado occurrences:

1 large metapopulation (numerous subpopulations) 1 historical

Colorado individuals:

100,000+

Primary threats:

Incidental grazing, hay dumping (State), pipelines

Land ownership/management:

State, Private

Carex oreocharis

Grassy Slope Sedge

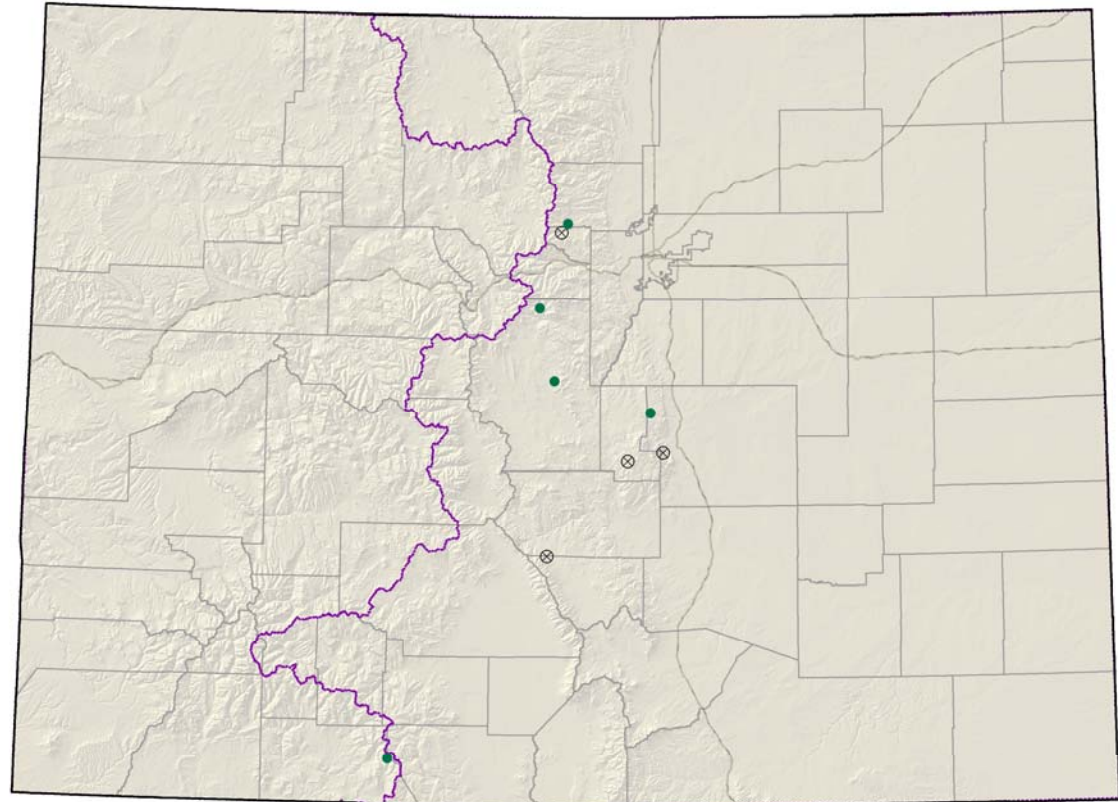
Federal status: None

Heritage ranks: G3/S1

Global distribution:

Arizona, New Mexico, Wyoming,
Colorado (Boulder, Conejos,
Custer, El Paso, Gilpin, Park, and
Teller counties).

Carex oreocharis



Last observed in Colorado:

August 2000

Colorado occurrences:

9, 4 historical

Colorado individuals:

several thousand

Primary threats:

weeds, road construction, grazing

Land ownership/management:

USFS 80%, Private 20%

Draba crassa
Thick-leaf Whitlow-grass

Federal status: None

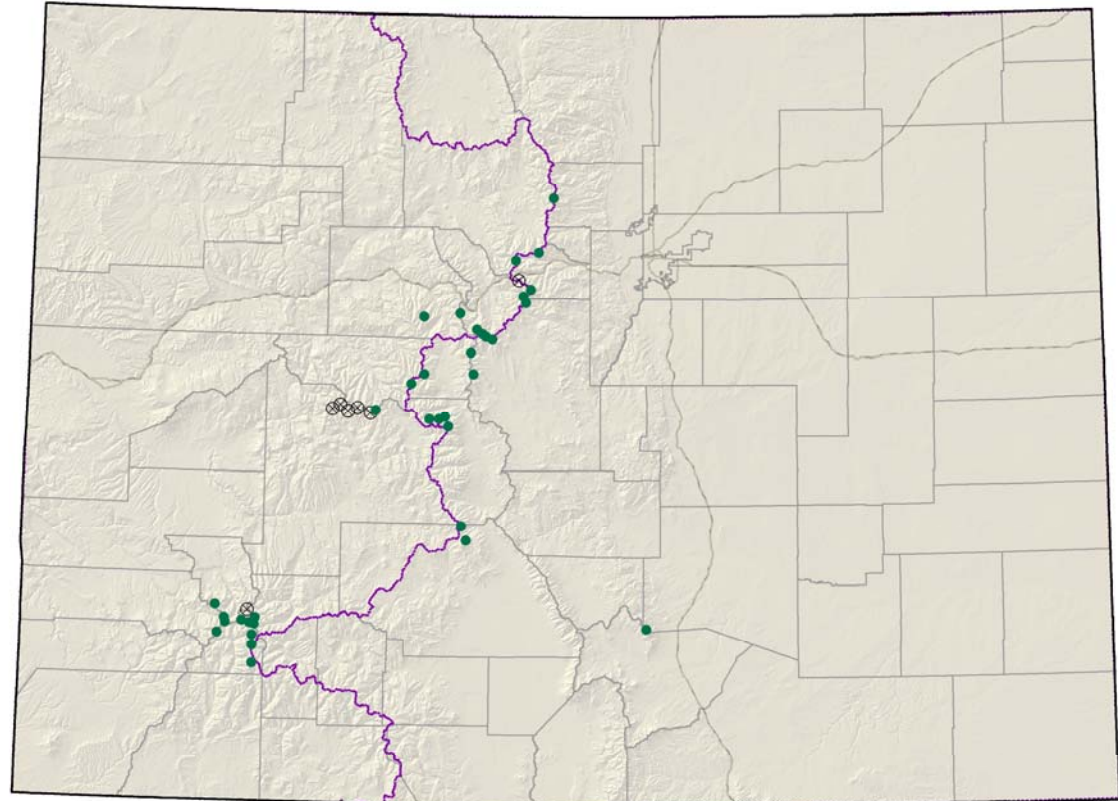
Heritage ranks: G3/S3

Global distribution:

Montana, Wyoming, Utah,
Colorado (Chaffee, Clear Creek,
Eagle, Grand, Gunnison, Huerfano,
Lake, Ouray, Park, Pitkin, Pueblo,
Saguache, San Juan, San Miguel,
Summit counties).



Draba crassa



Last observed in Colorado:	August 2007
Colorado occurrences:	42, 8 historical
Colorado individuals:	2,700 +
Primary threats:	recreational uses
Land ownership/management:	USFS 85%, Private 15%

Draba globosa

Rockcress Draba

Federal status: None

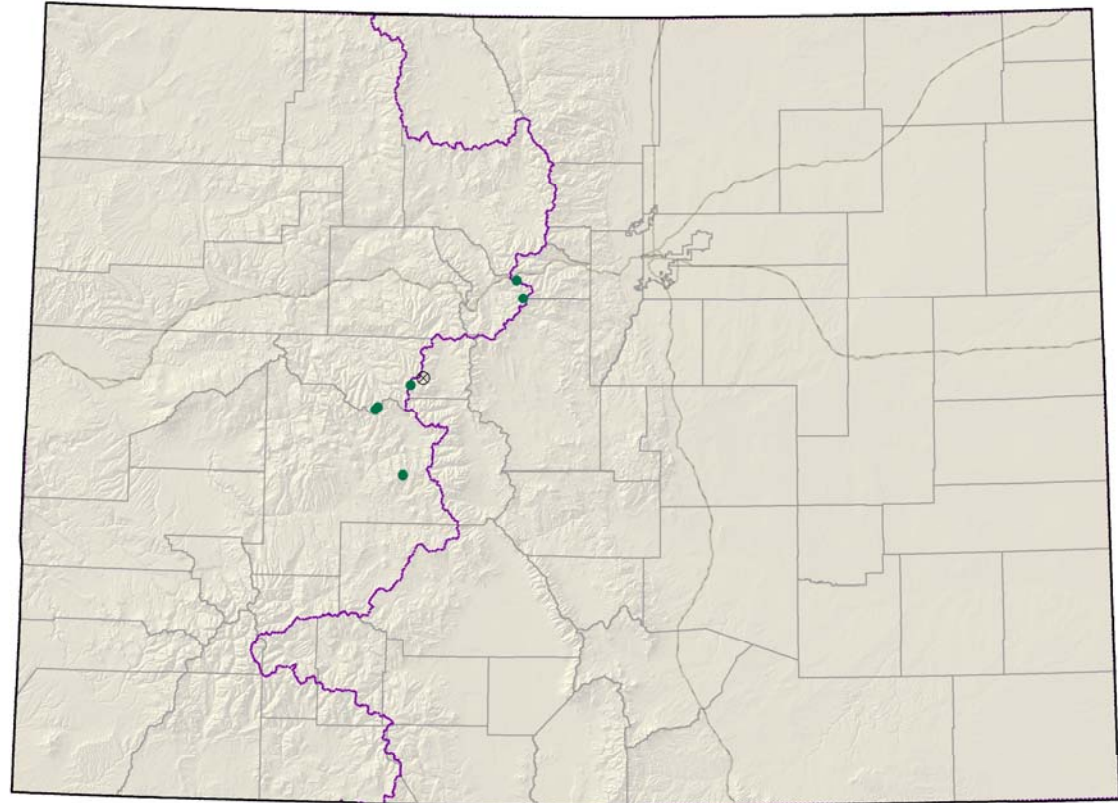
Heritage ranks: G3/S1

Global distribution:

Idaho, Montana, Utah,
Wyoming, Colorado (Clear
Creek, Gunnison, Lake, and
Pitkin counties).



Draba globosa



Last observed in Colorado:	August 2006
Colorado occurrences:	7, 1 historical
Colorado individuals:	150
Primary threats:	recreational use, potential mining
Land ownership/management:	USFS

Draba streptobrachia

Colorado Divide Whitlow-grass

Federal status: None

Heritage ranks: G3/S3

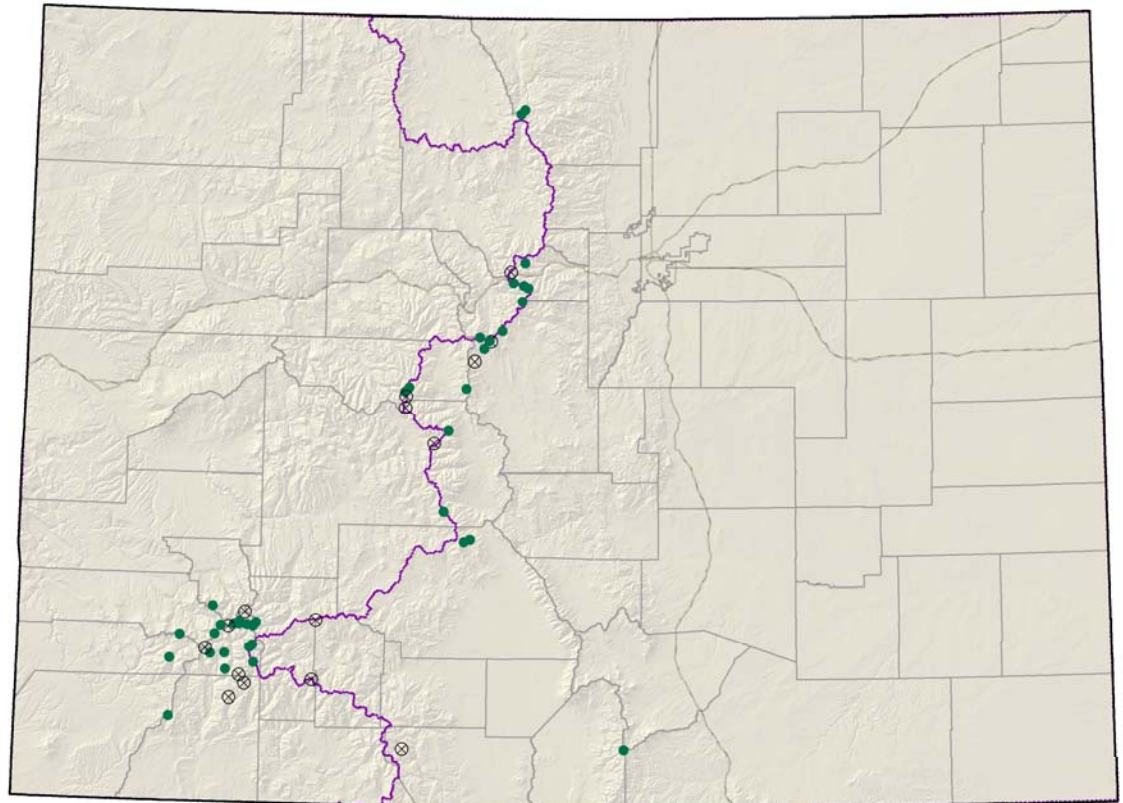
Global distribution:

Colorado endemic

(Chaffee, Clear Creek, Conejos, Costilla, Dolores, Gunnison, Hinsdale, Huerfano, La Plata, Lake, Larimer, Mineral, Ouray, Park, Pitkin, Saguache, San Juan, San Miguel, and Summit counties).



Draba streptobrachia



Last observed in Colorado:	August 2006
Colorado occurrences:	52, 15 historical
Colorado individuals:	unknown
Primary threats:	recreation
Land ownership/management:	USFS 63%, BLM 19%, Private 19%

Eriogonum exilifolium

Dropleaf Wild Buckwheat

Federal status: USFS sensitive

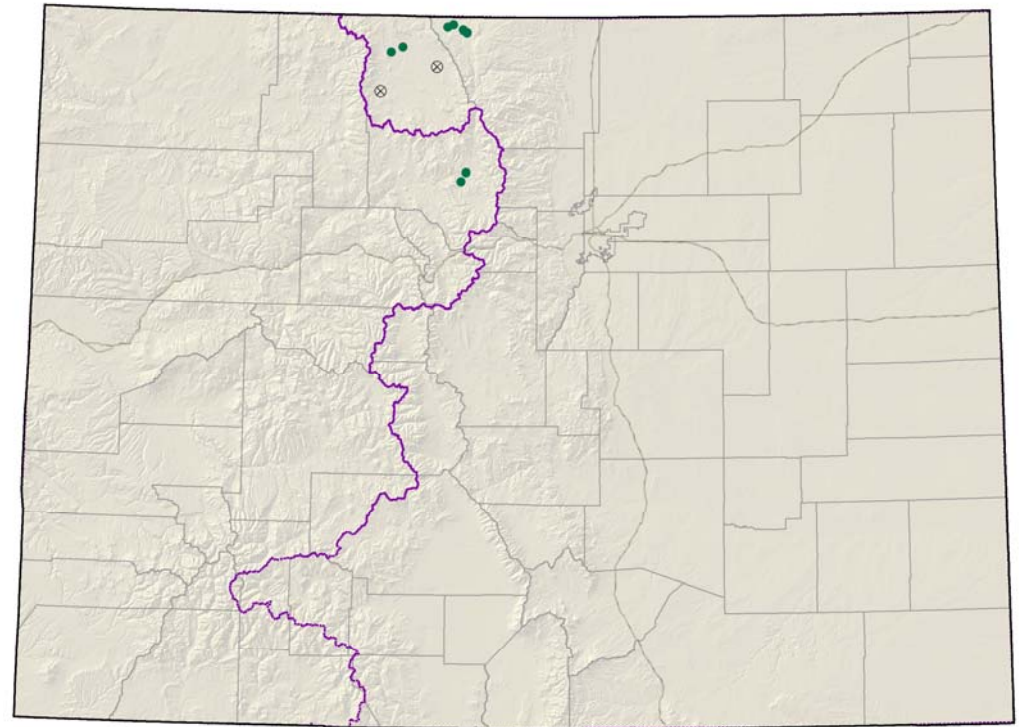
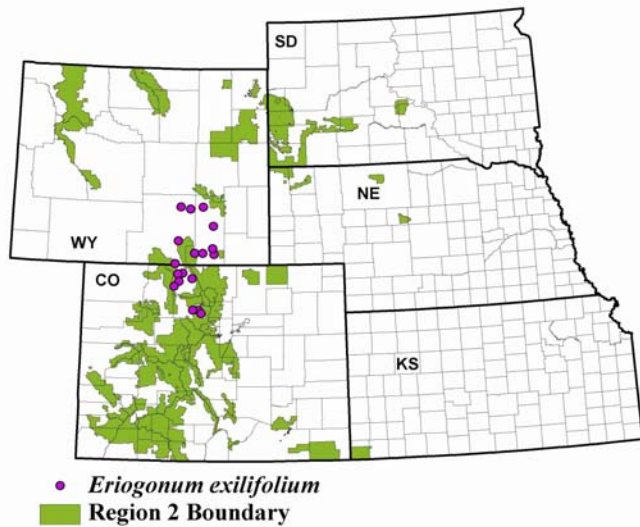
Heritage ranks: G3/S2

Global distribution:

Wyoming, Colorado (Grand,
Jackson, and Larimer counties).



Eriogonum exilifolium



Last observed in Colorado:

Colorado occurrences:

Colorado individuals:

Primary threats:

Land ownership/management:

September 2005

10, 2 historical

greater than 1,000,000

weeds, incompatible grazing, roads

BLM 100%

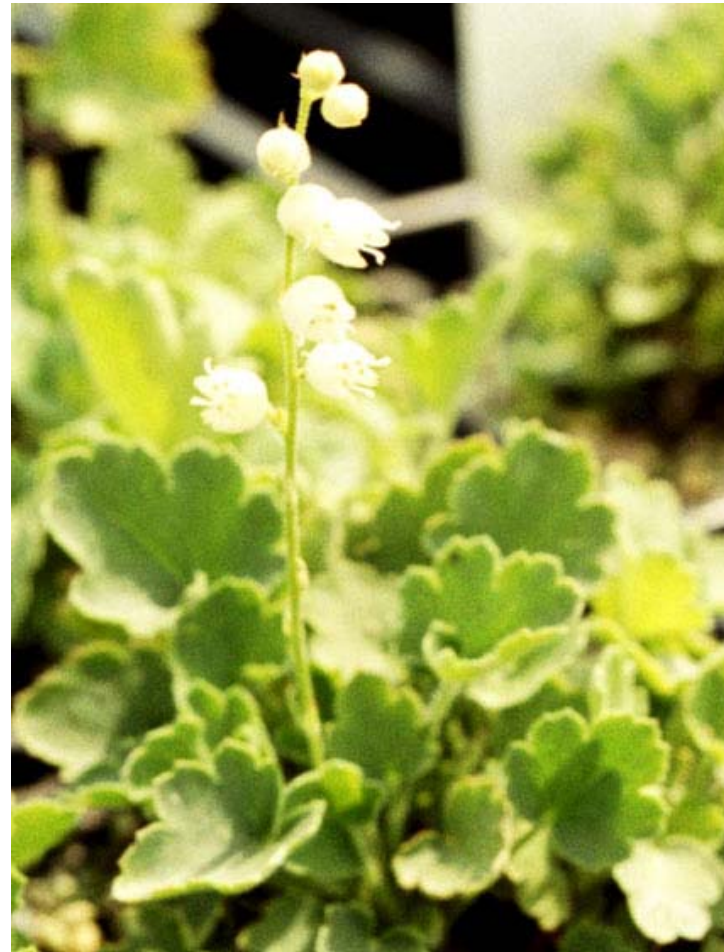
Heuchera hallii
Front Range Alum-root

Federal status: None

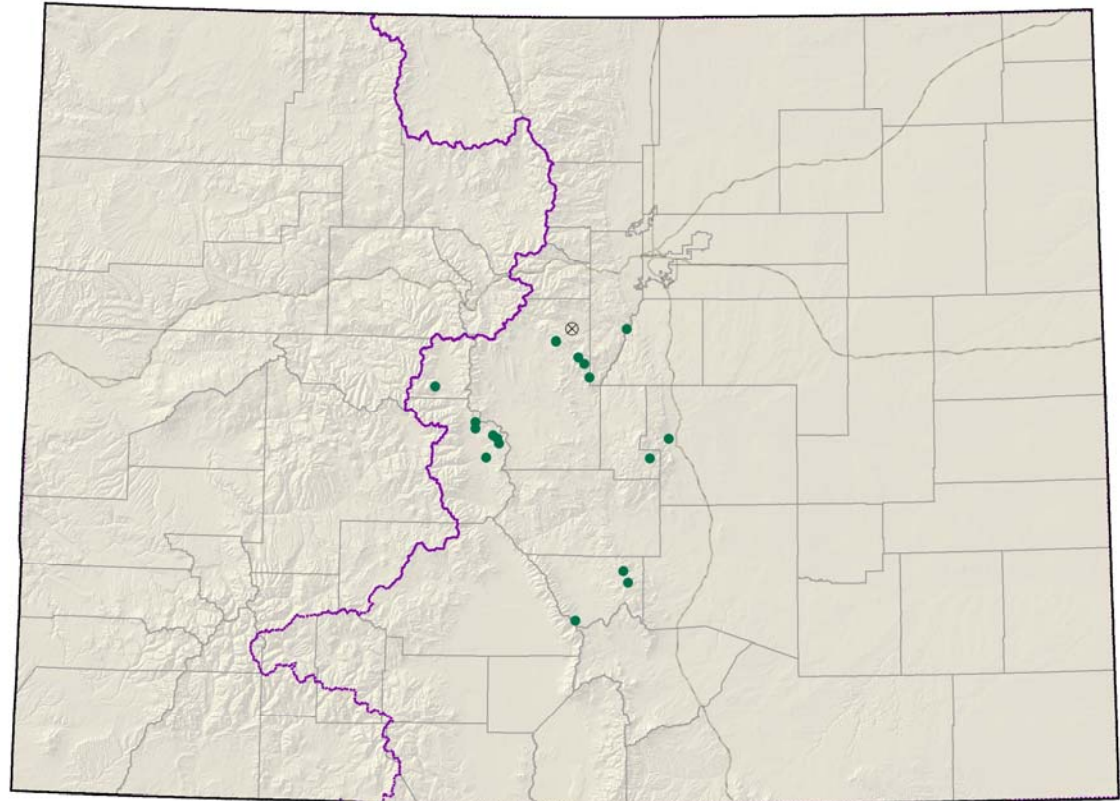
Heritage ranks: G3/S3

Global distribution:

Colorado endemic (Chaffee,
Custer, Douglas, El Paso,
Jefferson, Lake, Park, and Teller
counties).



Heuchera hallii



Last observed in Colorado:	June 2002
Colorado occurrences:	18, 1 historical
Colorado individuals:	unknown, locally common
Primary threats:	unknown
Land ownership/management:	USFS 100%

Nuttallia (Mentzelia) sinuata
Wavy-leaf Stickleaf

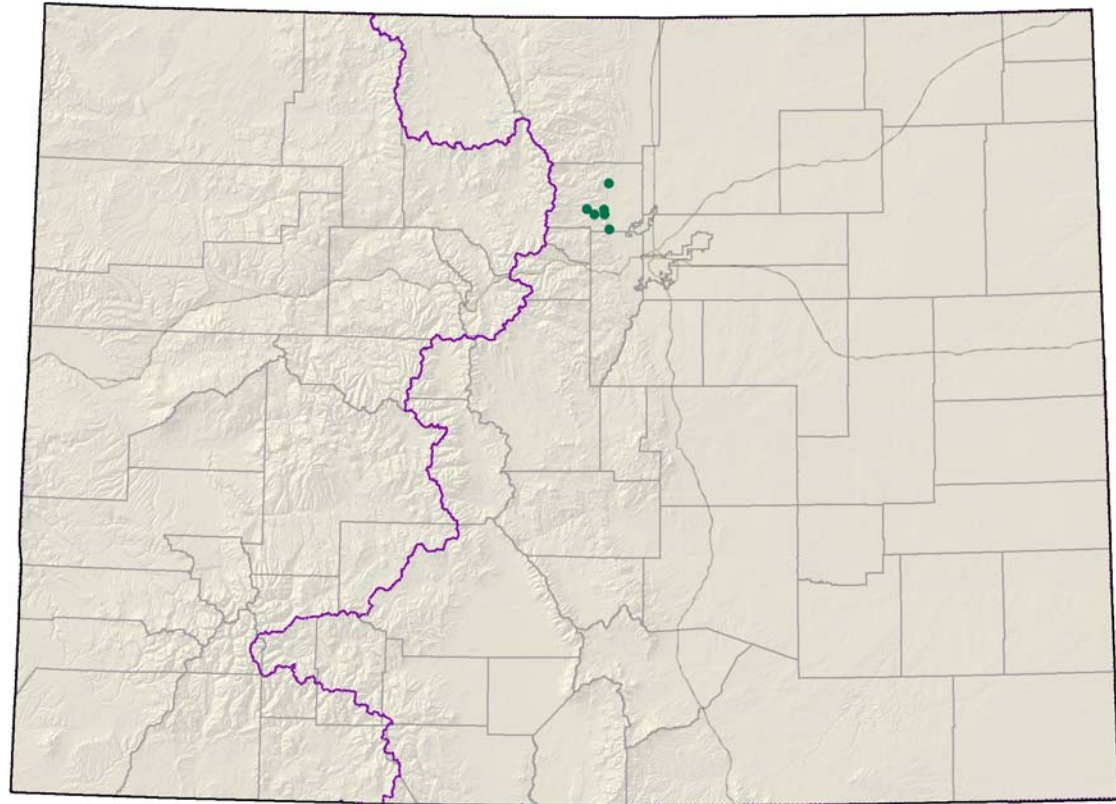
Federal status: None

Heritage ranks: G3/S2

Global distribution:
Wyoming and Colorado
(Boulder and Larimer
counties).



Nuttallia sinuata



Last observed in Colorado:	2006
Colorado occurrences:	8+
Colorado individuals:	hundreds+
Primary threats:	road work, misidentification as weeds
Land ownership/management:	USFS 67%, City 33%

Nuttallia speciosa

Jeweled Blazingstar

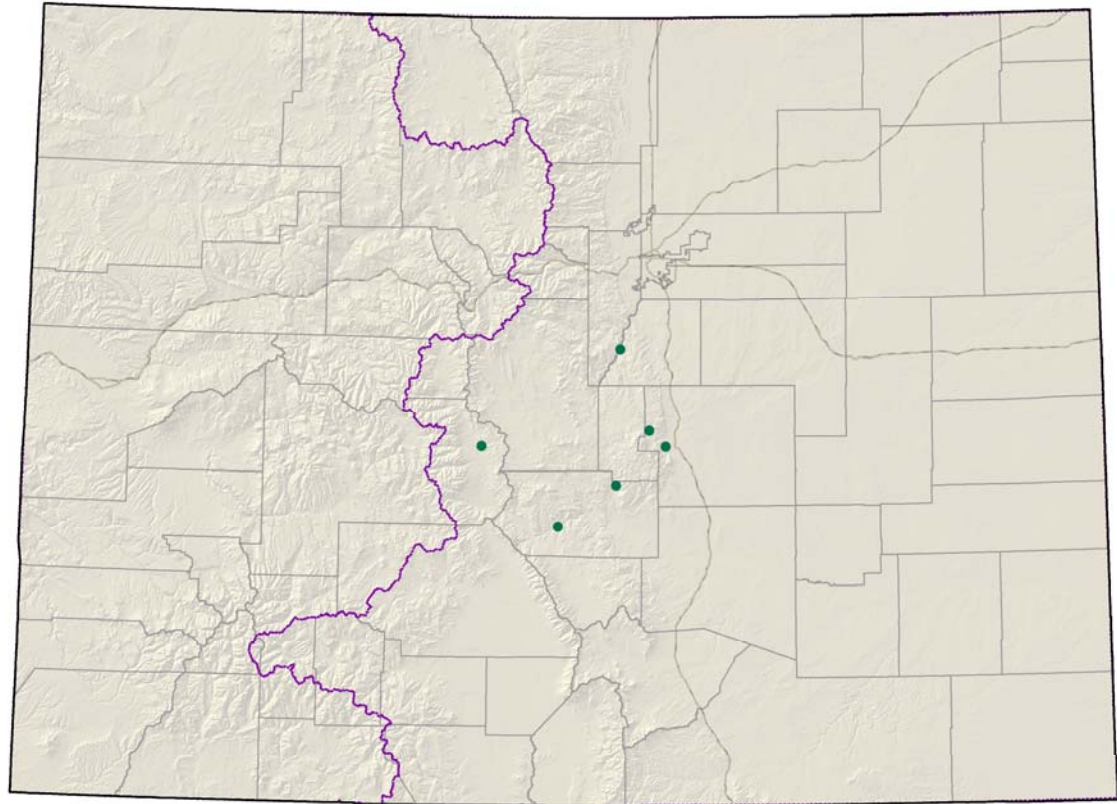
Federal status: None

Heritage ranks: G3?/S3?

Global distribution:

Wyoming and Colorado
(Arapahoe, Chaffee, Clear
Creek, Douglas, El Paso,
Fremont, Gilpin, Jefferson,
Mineral, Saugache, and Teller
counties).

Nuttallia speciosa



Last observed in Colorado:	June 2006
Colorado occurrences:	6+
Colorado individuals:	unknown
Primary threats:	road work, recreation, weeds
Land ownership/management:	BLM 100%

Oöonopsis wardii

Ward's Golden-weed

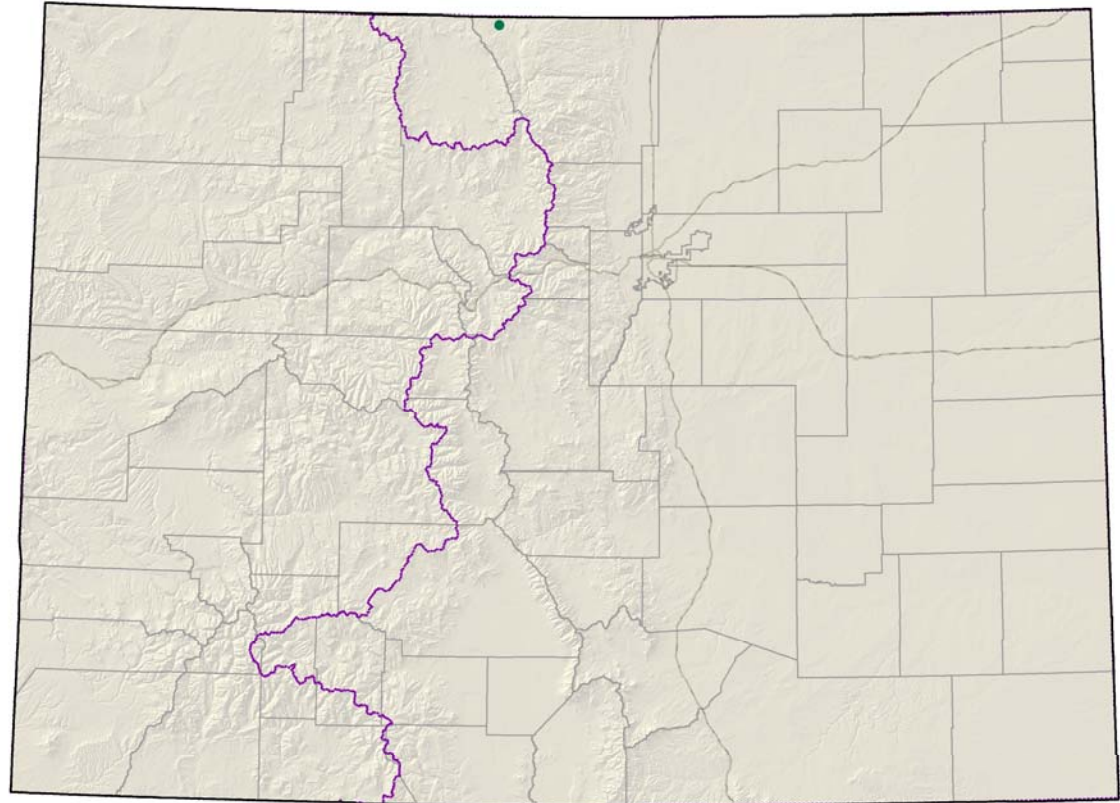
Federal status: None

Heritage ranks: G3/S1

Global distribution:
Wyoming and Colorado
(Larimer County).



Oönosis wardii



Last observed in Colorado:	August 2004
Colorado occurrences:	1
Colorado individuals:	300+
Primary threats:	incompatible grazing
Land ownership/management:	BLM

Phacelia denticulata

Rocky Mountain Phacelia

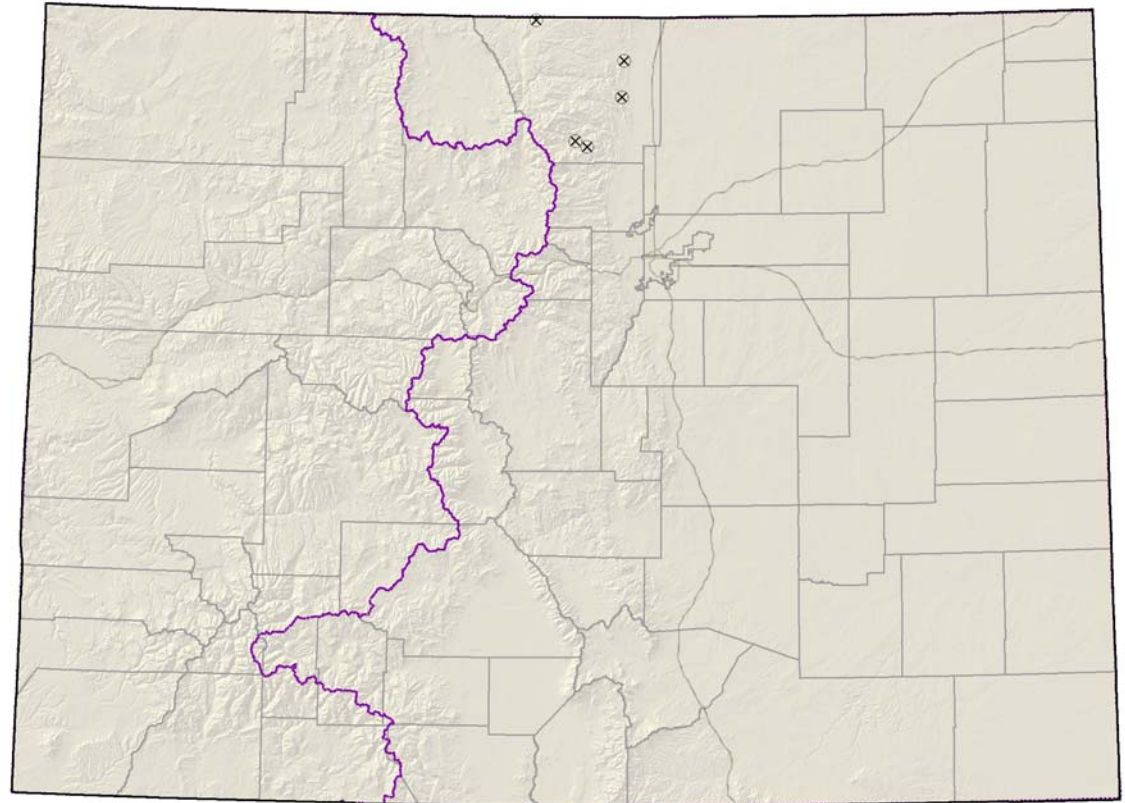
Federal status: None

Heritage ranks: G3?/S3?

Global distribution:

Wyoming, New Mexico,
Colorado (Boulder, Clear Creek,
Douglas, El Paso, Larimer, Las
Animas, and Park counties).

Phacelia denticulata



Last observed in Colorado:	1985
Colorado occurrences:	5+ ; all historical
Colorado individuals:	unknown
Primary threats:	unknown
Land ownership/management:	unknown

Physaria bellii

Bell's Twinpod

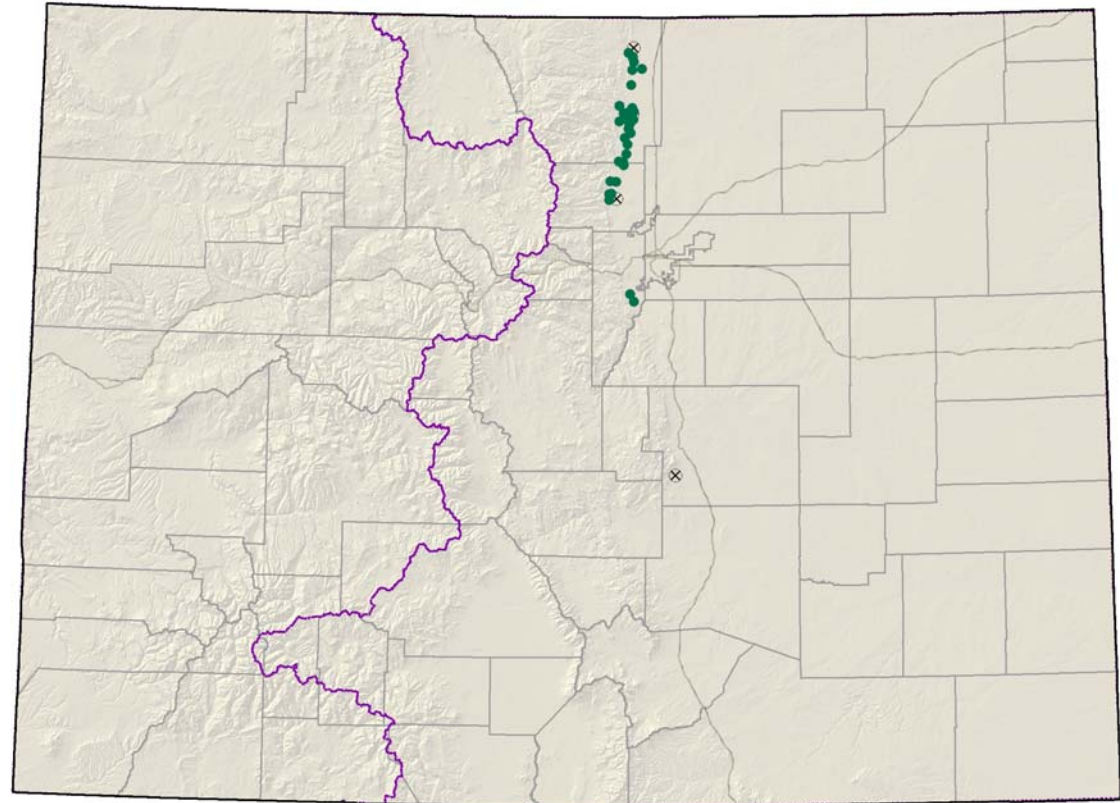
Federal status: None

Heritage ranks: G2G3/S2S3

Global distribution:
Colorado endemic
(Boulder, Jefferson, and Larimer
counties). One historical record
from El Paso County.



Physaria bellii



Last observed in Colorado:	August 2006
Colorado occurrences:	36, 4 historical
Colorado individuals:	Approximately 1 million
Primary threats:	Residential development, limestone mining, and road work, weeds
Land ownership/management:	Private 67%, Local government 33%

Potentilla ambigena

Southern Rocky Mountain Cinquefoil

Federal status: None

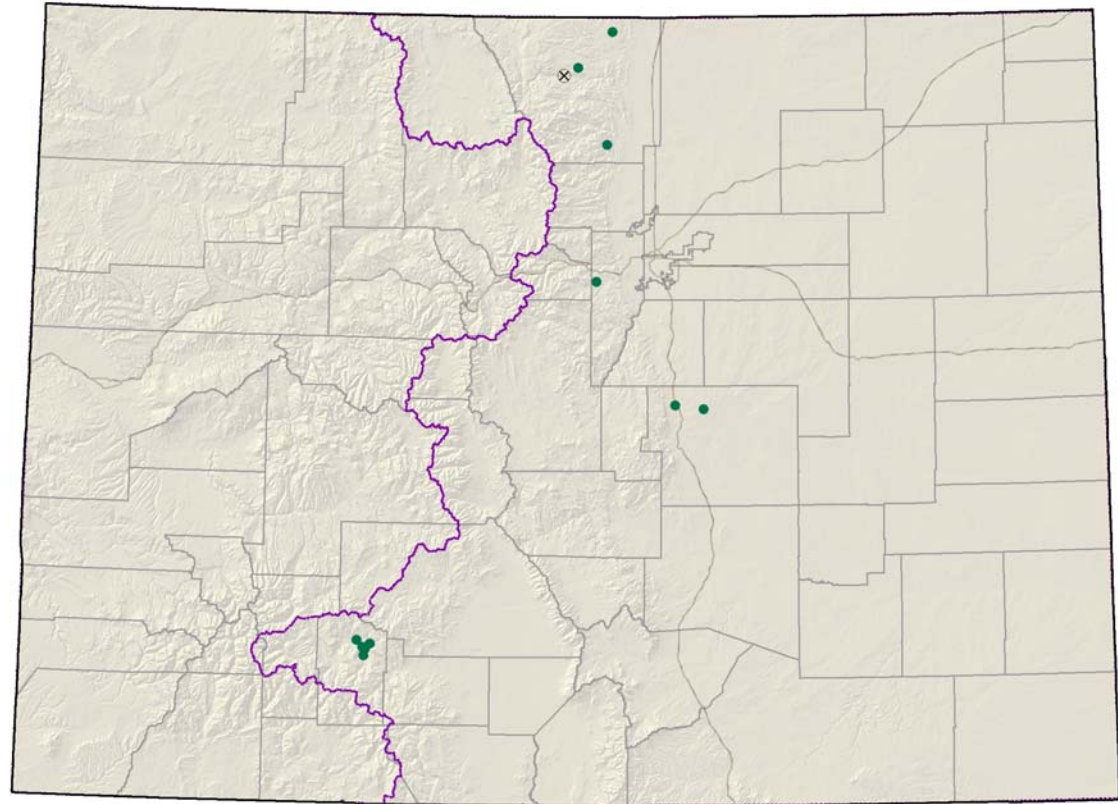
Heritage ranks: G3/S1S2

Global distribution:

New Mexico, Wyoming (historical), and Colorado (El Paso, Jefferson, Larimer and Mineral counties).



Potentilla ambigens



Last observed in Colorado:	September 2004
Colorado occurrences:	13, 1 historical
Colorado individuals:	5,000
Primary threats:	recreation, grazing, weeds
Land ownership/management:	USFS, DoD, local government, state, private

Potentilla rupincola
Rocky Mountain Cinquefoil

Federal status: USFS Sensitive

Heritage ranks: G2/S2

Global distribution:

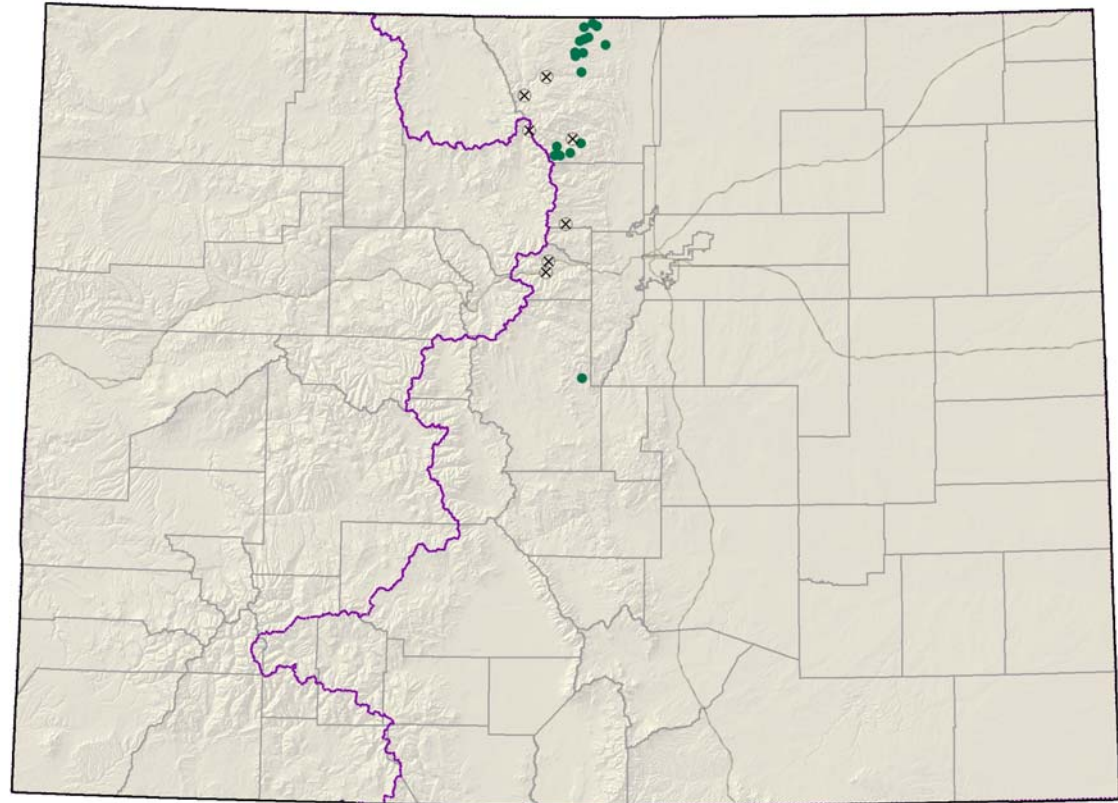
Colorado endemic.

Larimer and Park counties.

Historically from Boulder and
Gilpin counties.



Potentilla rupincola



Last observed in Colorado:

August 2004

Colorado occurrences:

24, 7 historical

Colorado individuals:

36,000+

Primary threats:

weeds, residential and commercial development, road work, recreation.

Land ownership/management:

Private 67%, USFS 17%, State 17%

Sisyrinchium pallidum

Pale Blue-eye-grass

Federal status: BLM Sensitive

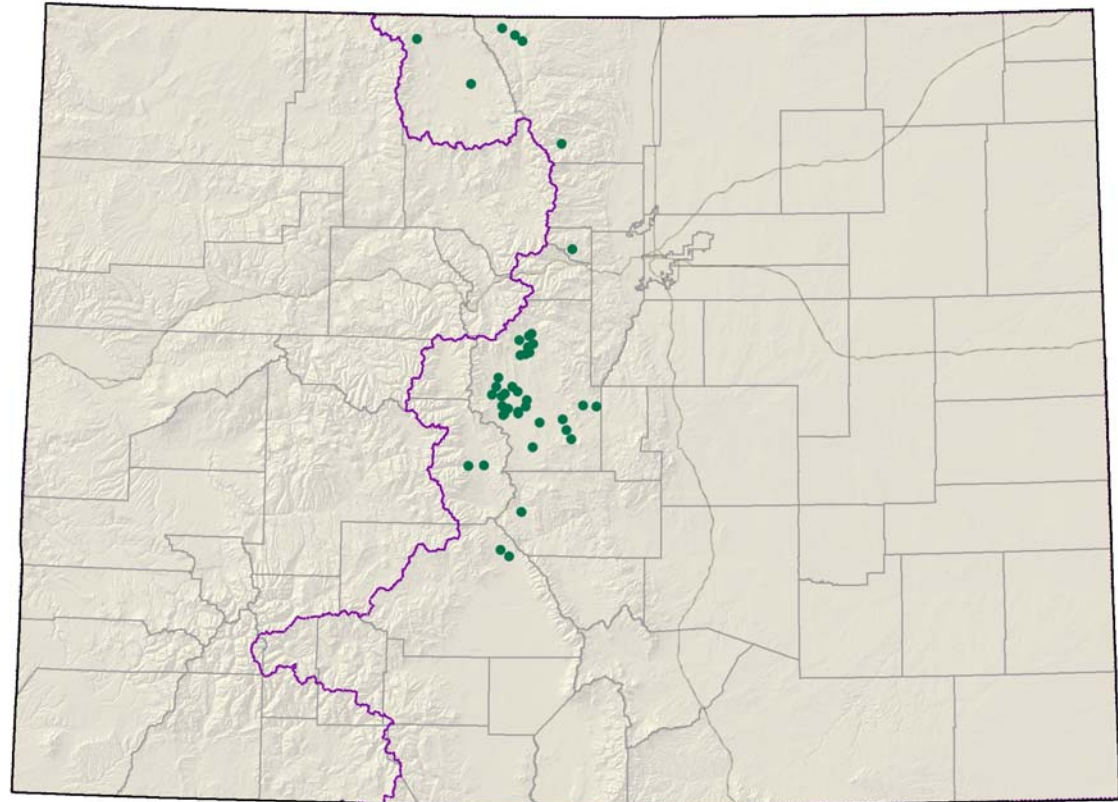
Heritage ranks: G2G3/S2

Global distribution:

Wyoming and Colorado
(Chaffee, Gilpin, Fremont,
Jackson, Larimer, Park, and
Saguache counties).



Sisyrinchium pallidum



Last observed in Colorado:	July 2006
Colorado occurrences:	43
Colorado individuals:	11,000
Primary threats:	road work, residential development, grazing, peat mining, and recreational activities.
Land ownership/management:	Private 54%, BLM 23%, State 15%, NGO 8%