

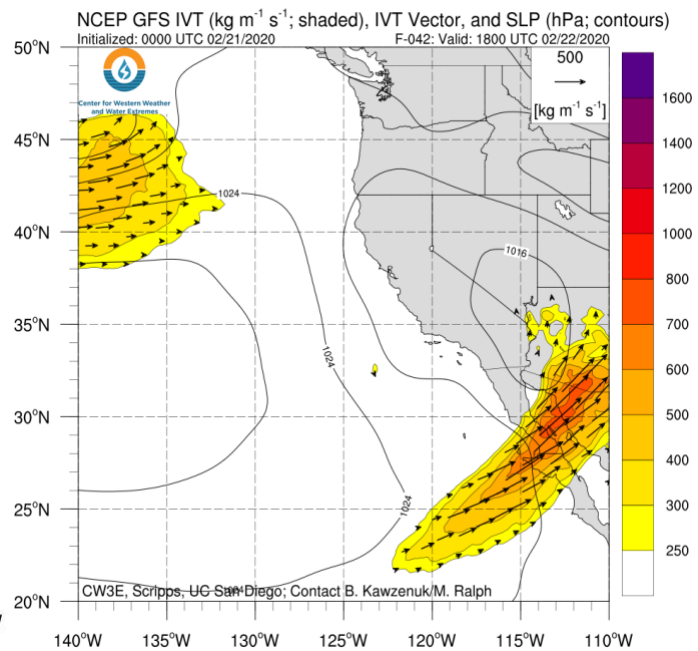
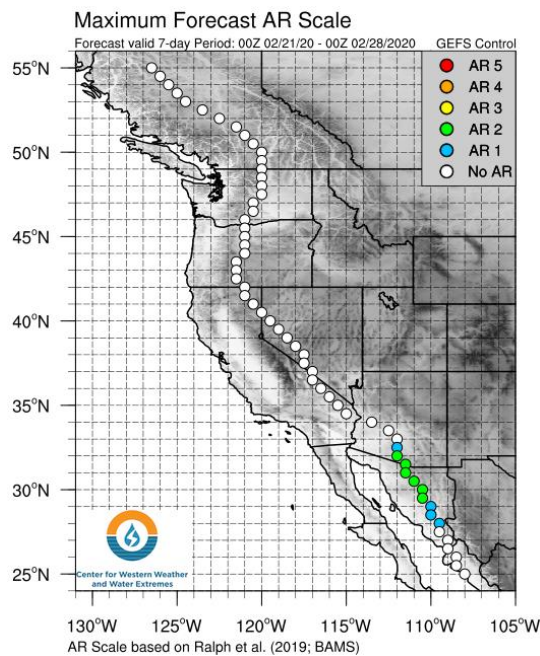
Latest Update on Atmospheric River Affecting the Southwestern U.S.

Updated: 21 February 2020

A look into the ongoing atmospheric river (AR) event and associated precipitation impacts over the southwestern U.S.

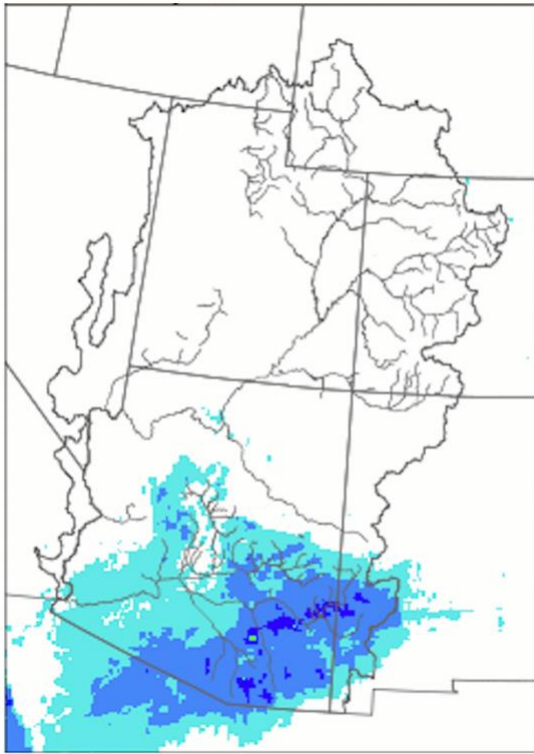
Forecast Highlights:

- A landfalling AR associated with a cutoff low near the California coast will impact northwestern Mexico and the southwestern U.S. today and Saturday
- AR2/AR3 conditions (based on the *Ralph et al. (2019)* AR Scale) are expected over the Baja Peninsula
- Inland penetration of high IVT values ($500 \text{ kg m}^{-1} \text{ s}^{-1}$) will lead to AR2 conditions over Sonora and southern Arizona
- Precipitation associated with this AR will be concentrated over the Colorado River Basin, with more than 0.50 inches expected across much of Arizona, southern Nevada, southwestern Utah, southwestern Colorado, and southwestern New Mexico
- Precipitation amounts in excess of 1.50 inches are possible over the higher terrain in central and eastern Arizona, where upslope moisture flux may lead to orographic enhancement of precipitation
- Localized flash flooding and isolated thunderstorms are also possible in south central Arizona on Saturday

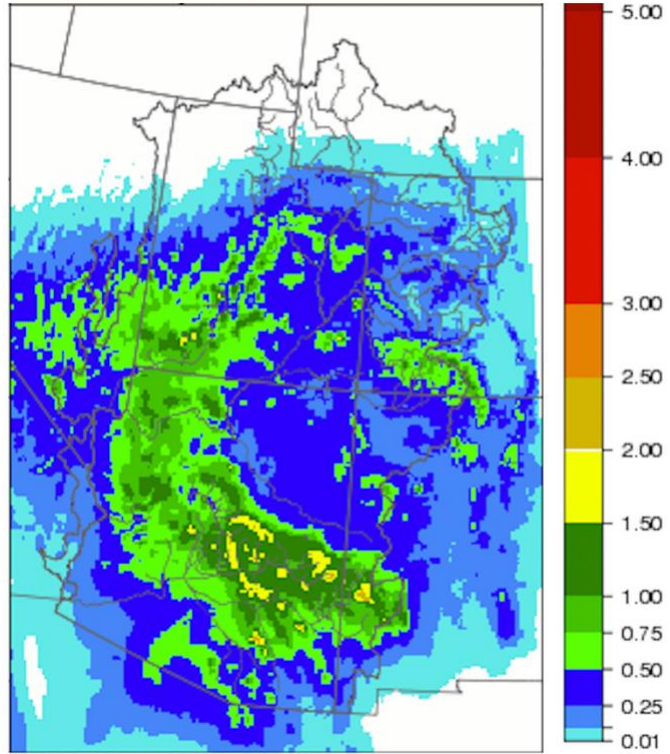


Stay tuned to the CW3E webpage for a full AR Update

CBRFC 24-h QPF: Valid 12Z 22 Feb



CBRFC 24-h QPF: Valid 12Z 23 Feb



Additional Considerations:

- Visit <https://www.cbrfc.noaa.gov/> for specific river and stream forecasts and <https://www.weather.gov/> for point specific watches, warnings, and forecasts.

In-depth AR forecasts products can be found here:
<http://cw3e.ucsd.edu/iwv-and-ivt-forecasts/>

Update provided by C. Castellano
c1castellano@ucsd.edu

Stay tuned to the CW3E webpage for a full AR Update