

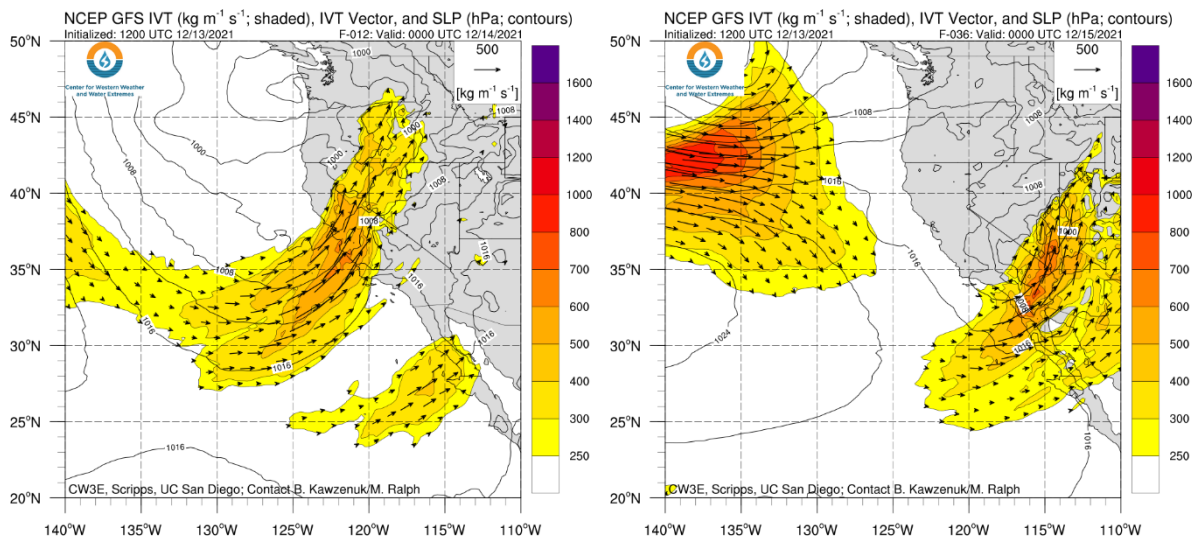
Latest Update on Atmospheric River Currently Impacting California

Updated: 13 December 2021

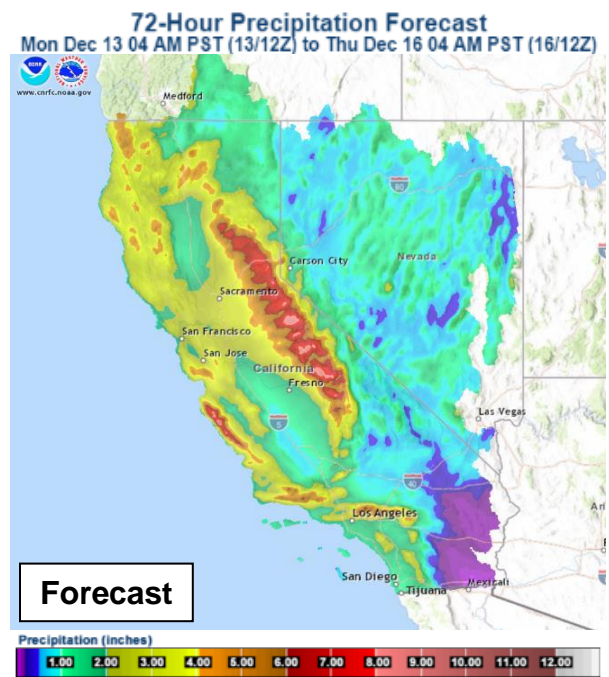
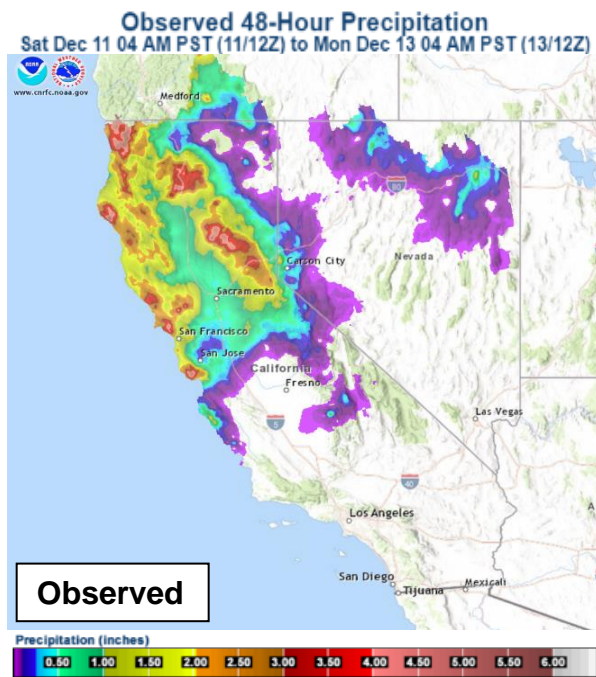
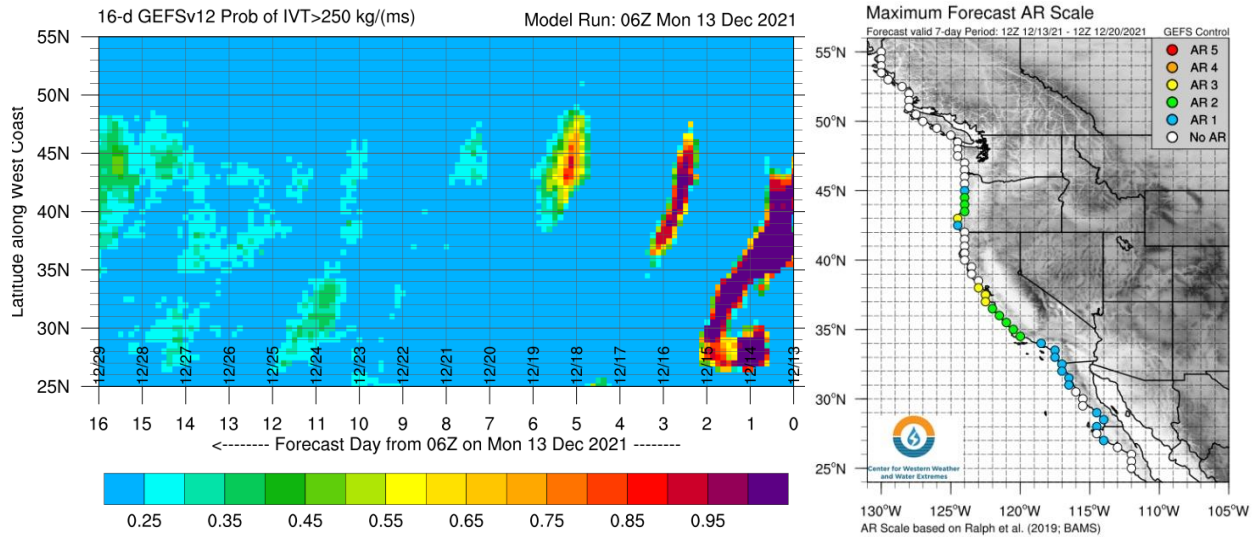
A quick look at the ongoing atmospheric river that will continue to impact California through Tuesday.

Forecast Highlights:

- An atmospheric river (AR) that made landfall over the Pacific Northwest on Saturday has temporarily stalled and begun to re-intensify over California
- Weak-to-moderate AR conditions (i.e., IVT 250–750 $\text{kg m}^{-1} \text{s}^{-1}$) are forecasted to continue over Central California and interior Northern California today
- The AR will gradually move southeastward, bringing weak-to-moderate AR conditions to Southern California and the Colorado River Basin tomorrow
- AR 2/AR 3 conditions are possible over the Bay Area and coastal Central California, and AR 1 conditions are forecasted over coastal Southern California
- Another weak system is forecasted to bring lighter precipitation to the region later this week
- As of 4 AM PT this morning, an estimated 3–5 inches of precipitation have already fallen in portions of the California Coast Ranges, the California Cascades, and the Northern Sierra Nevada
- An additional 5–10 inches of precipitation are possible in the Sierra Nevada and Central California Coast Ranges by Thursday morning
- At least 2–5 inches of precipitation are forecasted in the Southern California Transverse Ranges and Peninsular Ranges
- More than 4 feet of additional snowfall is possible over the higher terrain of the Sierra Nevada today through Thursday morning



Stay tuned to the CW3E webpage for a full AR Update



Additional Considerations:

- Visit <https://cnrfc.noaa.gov/> for specific river and stream forecasts and <https://www.weather.gov/> for point specific watches, warnings, and forecasts.

In-depth AR forecasts products can be found here:
<http://cw3e.ucsd.edu/iwv-and-ivt-forecasts/>

Update provided by C. Castellano
c1castellano@ucsd.edu

Stay tuned to the CW3E webpage for a full AR Update