



Quick Look at the Heavy Precipitation over the Pacific Northwest and Northern California *Updated: 8 November 2024*

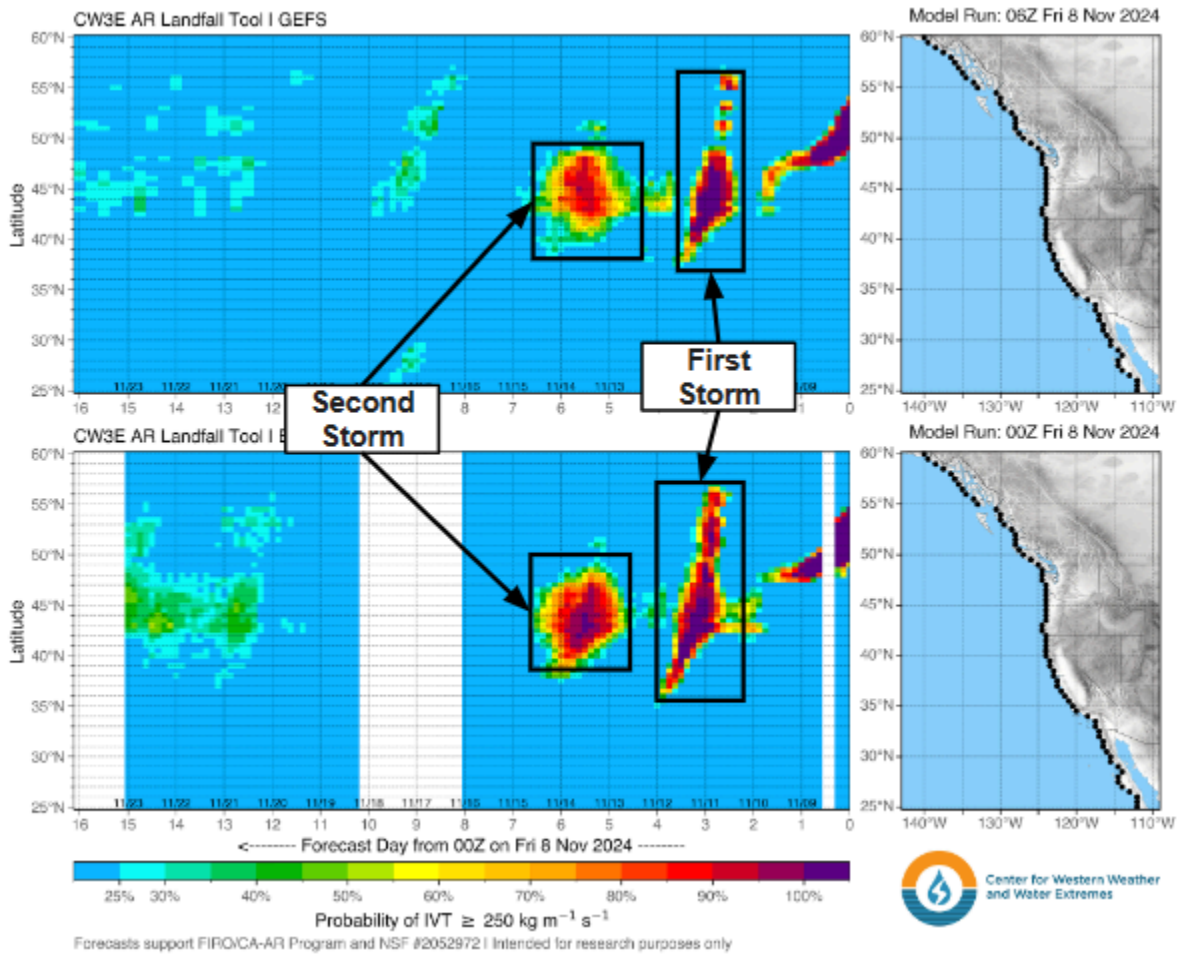
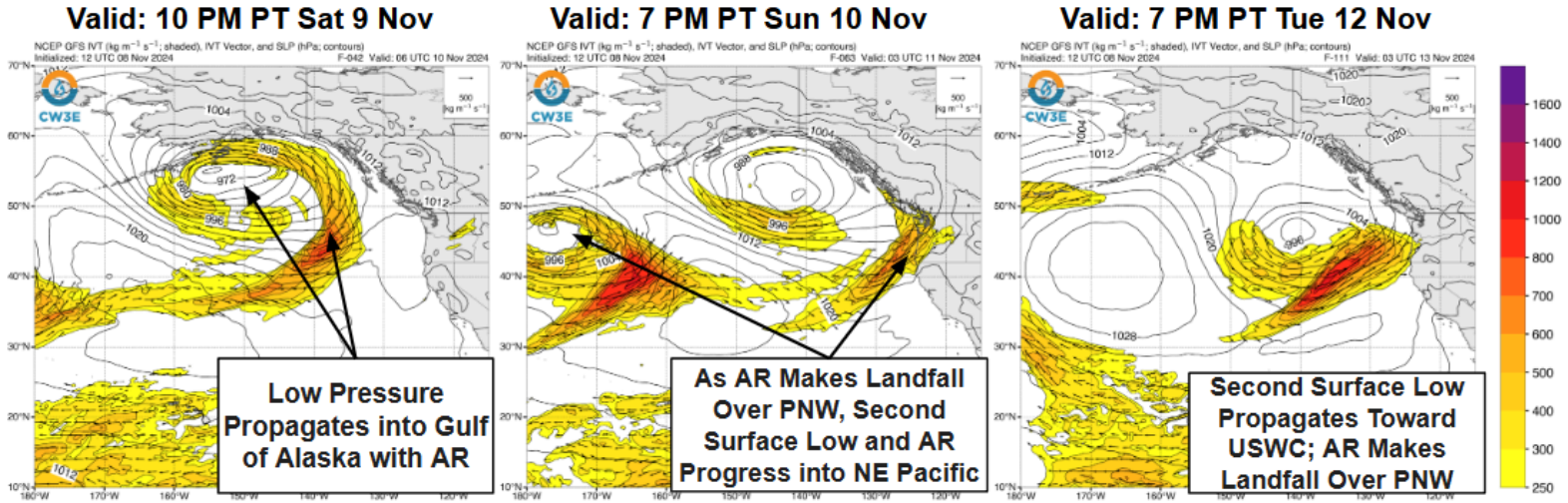
A pair of surface low-pressure systems and atmospheric rivers are forecast to bring heavy precipitation to the Pacific Northwest and Northern California early next week.

Forecast Highlights:

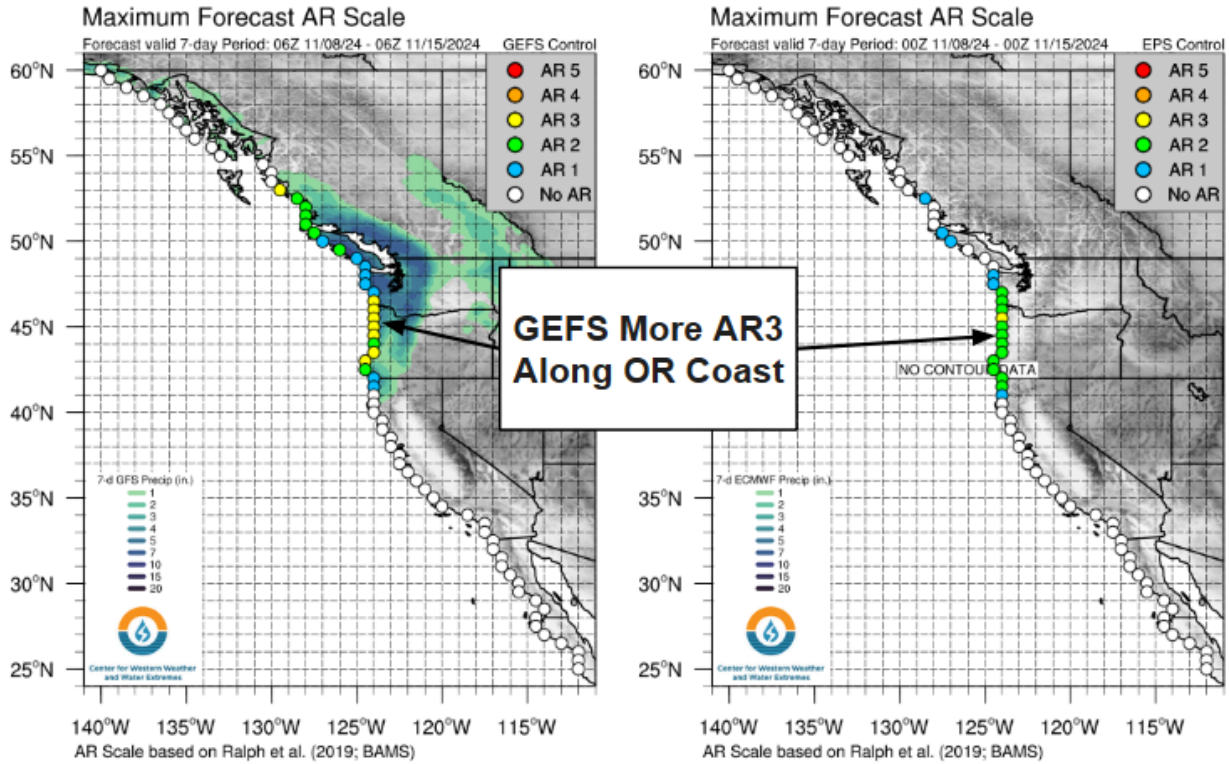
- CW3E's atmospheric river (AR) landfall tool is showing a very high likelihood (near 100% probability) of landfalling AR activity over the Pacific Northwest and Northern California beginning late Sun 10 Nov and continuing through Thu 14 Nov.
- The first surface cyclone propagates from the Central Pacific into the Gulf of Alaska, bringing an atmospheric river to the Pacific Northwest early next week (11 Nov).
- The second surface cyclone and atmospheric river follow shortly behind the first, making landfall over the Pacific Northwest on 12 Nov.
- The Global Ensemble Forecast System (GEFS) control is forecasting AR3 conditions for coastal southern WA extending south through OR whereas the ECMWF EPS control member is forecasting mostly AR2 conditions over the same region.
- There is uncertainty amongst the members of both the GEFS and EPS in the timing and duration of the second AR over the Pacific Northwest.
- The Weather Prediction Center (WPC) is forecasting at least three inches of precipitation across the Cascades and coastal Washington, Oregon and Northern California over the next 7 days.
- The heaviest precipitation (> 10 inches) is forecast over the Olympic Peninsula and portions of the Cascades.
- The EPS mean is forecasting slightly higher precipitation for coastal watersheds from Washington to northern California than that GEFS mean. The GEFS mean is forecasting greater precipitation over the Cascades.
- WPC has issued a marginal risk (level 1 of 4, at least 5% probability) for rainfall exceeding flash flooding guidance in Excessive Rainfall Outlooks (ERO) over coastal Washington, Oregon and California for the 24-hour periods ending 4 AM PT 11-13 Nov.

Stay alert to official NWS forecasts, watches, and warnings at [weather.gov](https://www.weather.gov) and follow guidance from local emergency management officials

Stay tuned to the CW3E webpage for a full AR Update

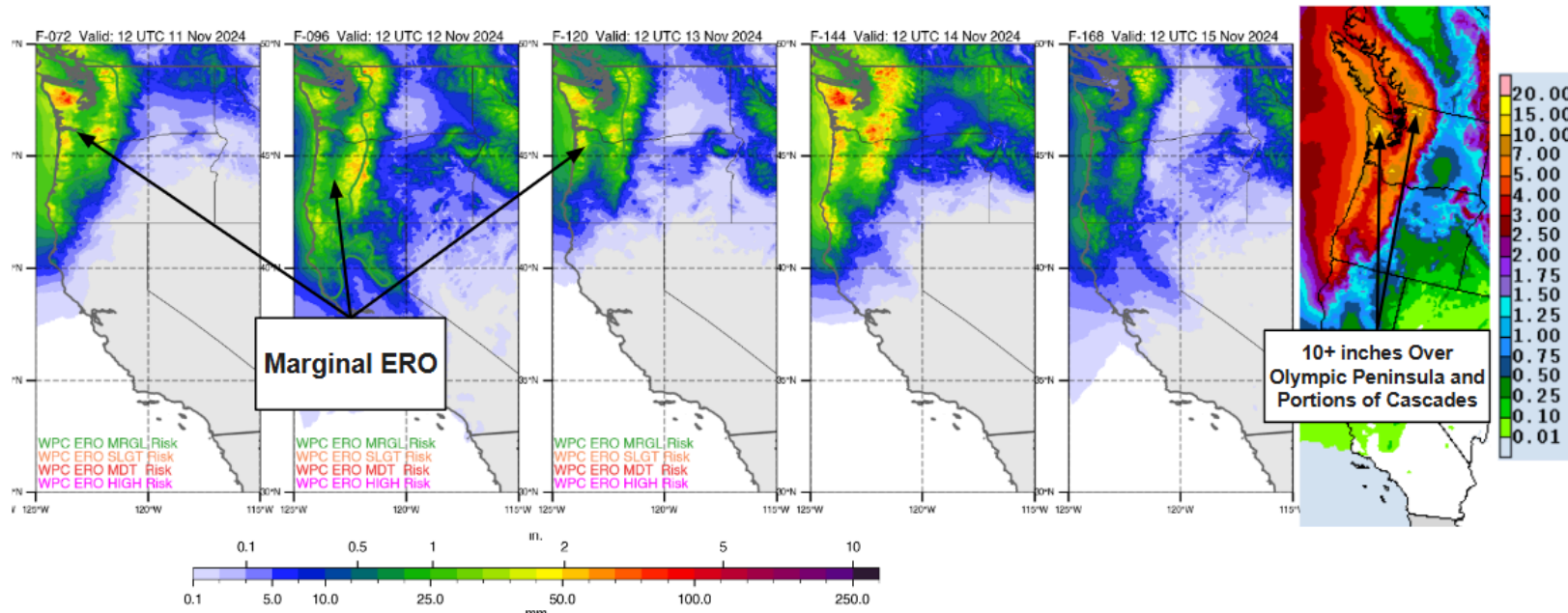


Stay tuned to the CW3E webpage for a full AR Update



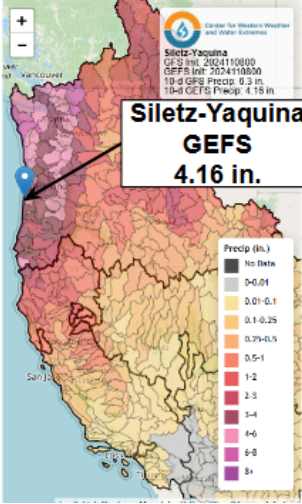
WPC Days 3-7 QPF: Periods Ending 4 AM PT 11-15 Nov

**WPC 7-Day QPF:
Period
Ending 4 AM PT Fri
15 Nov**

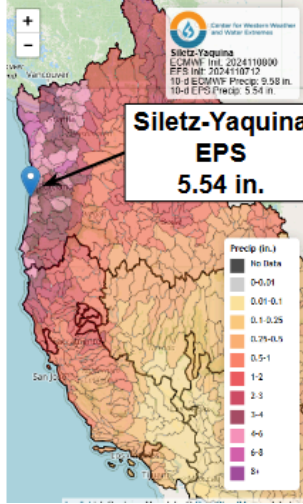


Stay tuned to the CW3E webpage for a full AR Update

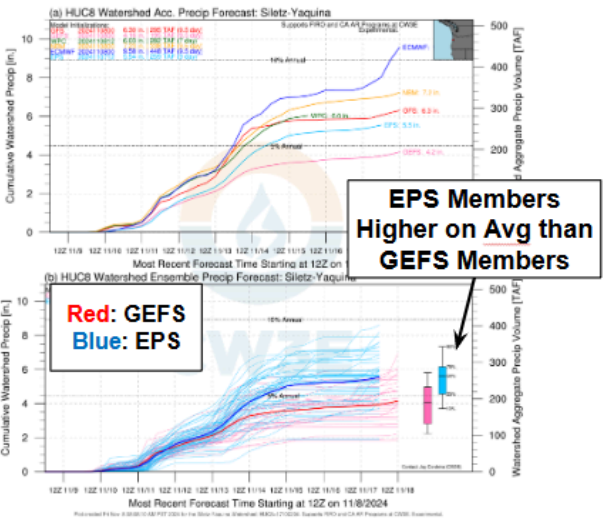
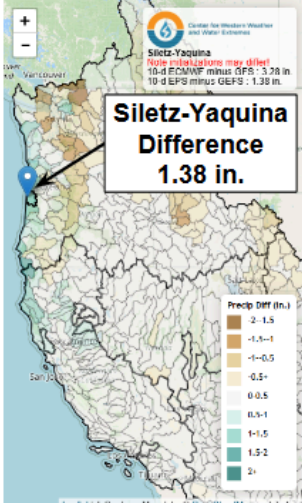
10-day GFS/GEFS Precipitation Forecasts



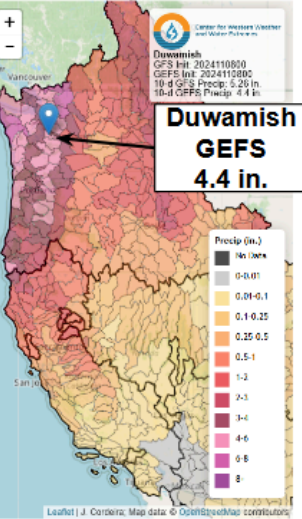
10-day ECMWF/EFS Precipitation Forecast



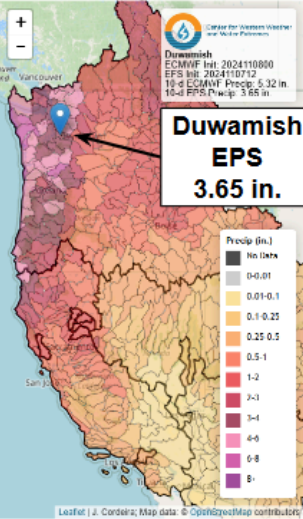
10-day Difference Precipitation Forecast



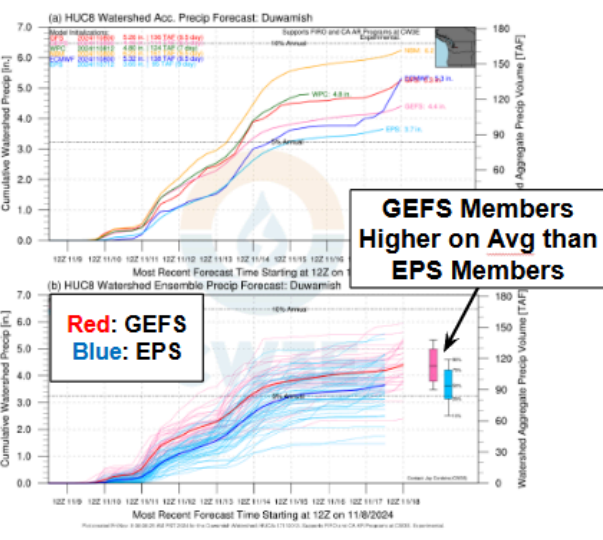
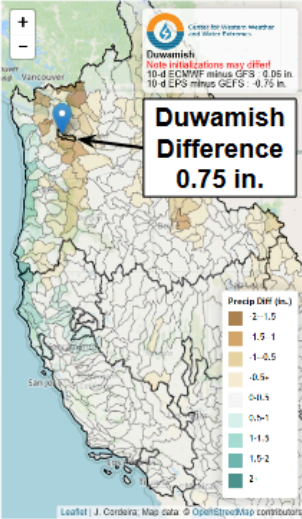
0-day GFS/GEFS Precipitation Forecasts



10-day ECMWF/EFS Precipitation Forecast



10-day Difference Precipitation Forecast



Additional Considerations:

- Visit <https://www.weather.gov/nwrfc/> and <https://www.weather.gov/cnrfc/> for specific river and stream forecasts and <https://www.weather.gov/> for point specific watches, warnings, and forecasts.

In-depth AR forecasts products can be found here:

<http://cw3e.ucsd.edu/iwv-and-ivt-forecasts/>

Update by M. Steen

msteen@ucsd.edu

Stay tuned to the CW3E webpage for a full AR Update