

2020-2021

# College of Dentistry Bulletin



**Please Note:** The University of Kentucky College of Dentistry Bulletin  
is available on-line at: <https://dentistry.uky.edu/faculty-and-staff-resources>

University of Kentucky College of Dentistry Chandler Medical Center,  
Lexington, KY 40536-0297

## College of Dentistry

This bulletin is an official publication of the University of Kentucky College of Dentistry. It contains policies, regulations, procedures, and fees in effect as the publication went to press. The College of Dentistry reserves the right to make changes at any time to reflect current board policies, administrative regulations and procedures, amendments by state law, and fee changes.

All applicants meeting the appropriate academic requirements and technical standards shall be considered equally for admission to any academic program thereof regardless of race, color, religion, sex, marital status, beliefs, age, national origin, sexual orientation, or disability.

<p><b><u>Dean's Message</u></b></p> <p><b><u>The University</u></b></p> <ul style="list-style-type: none"><li>• Mission and Goals</li><li>• Accreditation Policy</li><li>• Organizational Chart</li></ul> <p><b><u>Facilities</u></b></p> <ul style="list-style-type: none"><li>• D.M.D. Student Clinics</li><li>• Techniques Lab</li><li>• Classrooms</li><li>• Student Lounge</li><li>• Faculty and Resident Clinics</li><li>• Kentucky Clinic</li><li>• Orofacial Pain Clinic</li><li>• Center for Oral Health Research</li><li>• Medical Center Library</li></ul> <p><b><u>Admissions and Student Affairs</u></b></p> <ul style="list-style-type: none"><li>• D.M.D. Program Admission</li><li>• Technical Standards</li><li>• Predental Preparation</li><li>• Undergraduate</li><li>• Prerequisites/Coursework</li><li>• Application Process</li><li>• Transcripts</li><li>• Letters of Evaluation</li><li>• Dental Admission Tests</li><li>• Interviews</li><li>• Residency Status</li><li>• Personal Health</li><li>• Student Financial Aid</li><li>• Cost of Attendance</li></ul>	<ul style="list-style-type: none"><li>• Career Planning and Counseling</li></ul> <p><b><u>Academic Affairs</u></b></p> <ul style="list-style-type: none"><li>• The Curriculum</li><li>• DMD Courses</li></ul> <p><b><u>Postdoctoral Education</u></b></p> <ul style="list-style-type: none"><li>• Program Directors</li><li>• Application for Postdoctoral</li></ul> <p><b><u>Programs (PASS)</u></b></p> <ul style="list-style-type: none"><li>• Endodontics</li><li>• General Practice Residency</li><li>• Oral and Maxillofacial Surgery</li><li>• Orofacial Pain</li><li>• Orthodontics</li><li>• Pediatric Dentistry</li><li>• Periodontology</li></ul> <p><b><u>Other Educational Opportunities</u></b></p> <p><b><u>Digital Dentistry</u></b></p> <p><b><u>Patient Care</u></b></p> <p><b><u>Public Health Service</u></b></p> <p><b><u>Alumni Affairs</u></b></p> <p><b><u>Philanthropy</u></b></p> <p><b><u>Lexington</u></b></p> <p><b><u>Directions to UK College of Dentistry</u></b></p> <p><b><u>Appendix A:</u></b> Technical Standards</p> <p><b><u>Appendix B:</u></b> Course_Descriptions</p>
---	---

**Dear Prospective Student,**

I am very pleased to learn of your interest in pursuing a dental career. Dentistry is consistently rated as one of the top professions by the US News and World Report. It is a rewarding career that offers professional service with excellent life balance. There is great satisfaction in helping individuals improve their oral health, while improving function and self-esteem. Dentists are highly respected and often become significant leaders in their communities.

Our College is based on three basic principles that we believe are essential qualities of a successful dentist. Our students need to be biologically oriented, technically capable, and socially sensitive. These principles were presented by our founding fathers in 1960s and continue to be the goal and driving force within the college. We are very proud of the quality of our graduates as they become excellent practitioners, not only in Kentucky, but throughout the United States.



The curricular demands of dental education are strenuous. However, our college offers a highly educated, passionate faculty and staff to assist in the learning process. Our faculty and staff are sincerely interested in the success of our students as they progress through the curriculum. Our curriculum prepares our students for the future of dentistry.

We are a leader in digital dentistry, providing students the opportunity to, not only see, but use digital dentistry techniques in all four years of the curriculum. Implants and single day crowns are available as students' progress through the program. We also strive to offer students with unique research opportunities with cross-disciplinary collaboration. Part of my role as dean is to assist our college's dedicated faculty and staff to help each student reach his or her greatest potential. We are here to provide the personal attention that will help each student become a biologically orientated, technically capable, and socially sensitive dentist.

Please take some time to review this document and learn more about our college. If you have any questions, please stop by my office, or visit any of our Associate Deans.

Sincerely,  
Jeffrey P. Okeson, DMD  
Dean



**1954** - UK Albert B. Chandler Medical Center is authorized to include colleges of dentistry, medicine, allied health professions, nursing, and pharmacy.

**1960** - 473-bed University of Kentucky Hospital opens.

**1962** - College of Dentistry enrolls its first class

### **The University**

Founded on Feb. 22, 1865, the University of Kentucky began as the Agricultural Mechanical College of Kentucky University. In 1878, the Agricultural and Mechanical College was separated from Kentucky University and reestablished on land given by Lexington and Fayette County. Kentucky University is now Transylvania University. To provide a separate campus for the new institution, the city of Lexington donated its 50-acre fairground and park which had been used as bivouac area for Union troops during the Civil War. President James K. Patterson, whose service to the institution began in 1869, used his personal savings to supplement the building fund. Thirty years later, the legislature changed the name of the institution to State University, Lexington, Kentucky, and gave it additional financial support. In 1916, the name was changed to the University of Kentucky. UK is now among the 93 state universities and land-grant institutions in America. In 2012, the College of Dentistry celebrated its 50<sup>th</sup> Anniversary. Other dates have proved pivotal in the history of the University:

#### **Pivotal dates in the history of the University:**

**1954** - UK Albert B. Chandler Medical Center is authorized to include colleges of dentistry, medicine, allied health professions, nursing, and pharmacy.

**1960** - 473-bed University of Kentucky Hospital opens.

**1962** - College of Dentistry enrolls its first class.

**2012** – 50<sup>th</sup> Anniversary

Today, UK has about 30,000 students on the Lexington campus and Medical Center. More than 1,700 full-time faculty are employed at the University. UK is a member of the Southern Association of Colleges and Schools.



## The College of Dentistry

- ➔ Currently, the College admits 40 Kentucky residents and 25 non-residents into its four-year curriculum leading to the Doctor of Dental Medicine (D.M.D.) degree.

---

### College of Dentistry Mission

#### **MISSION**

*Through leadership in education, patient care, discovery, and community engagement, we aim to advance oral and general health in Kentucky and beyond. We are committed to cultivating a humanistic environment that appreciates and respects the diversity of thought, culture, and experiences of all members of our community.*

#### **VISION**

*Be the No. 1 College of Dentistry.*

---

The College of Dentistry is one of six Health Care Colleges in the University of Kentucky. Other colleges include Health Sciences, Medicine, Nursing, Pharmacy and Public Health. The UK Hospital, UK Children's Hospital, Kentucky Clinic, Sanders-Brown Center on Aging and Lucille Parker Markey Cancer Center also are integral components of UK's health science complex.

The College of Dentistry was established in 1961. In its brief existence, the accomplishments of the College are unparalleled in dental education. From its beginning, it has been acknowledged nationally and internationally as a leader in academic dentistry. Since its founding, more than 2,000 aspiring practitioners have selected the University of Kentucky to prepare them for their chosen profession.

Currently, the College admits 40 Kentucky residents and 25 non-residents into its four-year curriculum leading to the Doctor of Dental Medicine (D.M.D.) degree. The goal of the curriculum is to prepare dentists to meet the oral health needs of the society they are called to serve. The curriculum, developed in Kentucky, and now used extensively throughout the nation, focuses on integrating learning in the biomedical and clinical sciences. This is accomplished by an introduction to clinical dentistry in the first year, and by extension of study in the biomedical sciences throughout the four years.

The curriculum is increasingly problem-oriented, focusing on developing the student dentists' critical-thinking skills imperative for the contemporary practice of dental medicine. The faculty is committed to inculcating in students an attitude of life-long learning, believing that only such an orientation enables a practitioner to provide competent and state-of-the-art services in a rapidly changing clinical environment. The expanding knowledge base of the profession requires that the curriculum focus on principles of dentistry and on teaching future dentists how to learn and instill in them the desire to continue to learn about the profession.

The College offers advanced educational programs leading to advanced certification in endodontics, general practice, oral and maxillofacial surgery, orofacial pain, orthodontics, pediatric dentistry, periodontics. In periodontics and orthodontics, students also earn a Master of Science degree from the University of Kentucky Graduate School. The option of a Master of Science is available in orofacial pain. Continuing education courses for practicing dental professionals also are an important dimension of the College's educational activities.

The College of Dentistry and all its programs are accredited by the Commission on Dental Accreditation of the American Dental Association.

#### **Accreditation Policy**

The predoctoral educational program at the University of Kentucky College of Dentistry is fully accredited by the American Dental Association Commission on Dental Accreditation.

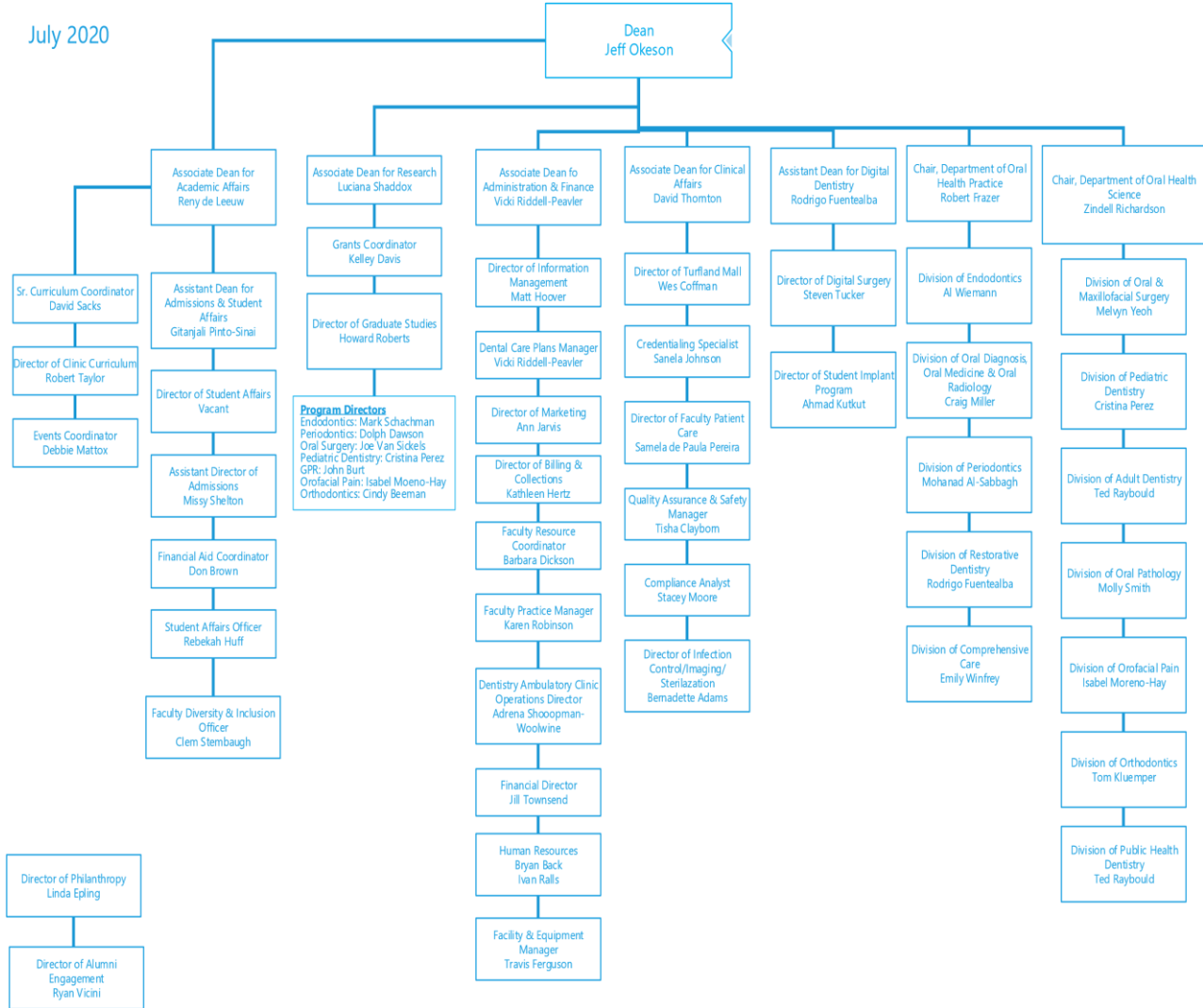
It is the policy of this institution and the Commission on Dental Accreditation that all students should know how to contact the Commission to obtain a copy of the Accreditation Guidelines and/or to file a complaint.

The Commission on Dental Accreditation will review complaints that relate to a program's compliance with the accreditation standards. The Commission is interested in the sustained quality and continued improvement of dental and dental-related education programs but does not intervene on behalf of individuals or act as a court of appeal for individuals in matters of admission, appointment, promotion or dismissal of faculty, staff, or students.

A copy of the appropriate accreditation standards and/or the Commission's policy and procedure for submission of complaints may be obtained by contacting the Commission at 211 East Chicago Avenue, Chicago, IL 60611-2678 or by calling 1-800-621-8099 extension 4653, or at the following website: <http://www.ada.org/314.aspx>

# Organizational Chart

July 2020





## Facilities

The University of Kentucky College of Dentistry is in a six-story building on the UK HealthCare campus. The College's physical facilities include patient care operatories, technique laboratories, classrooms, conference rooms, and faculty and administrative offices. There are over 200 patient care operatories providing support for all dimensions of the College's programming.

In keeping with the College's commitment to progress and innovation, new equipment and facilities are continually being introduced to enhance the education of student dentists and the patient experience. The College of Dentistry is completing facility renovations to accommodate the new digital dentistry program. Mobile intraoral digital scanners will be used in the DMD Student Clinic, and the image files will then be available for viewing and restoration design in the new Digital Design Office. A milling room has been created with the capability of producing crowns and inlays that can be delivered to the patient during the same appointment as the tooth preparation.

Digital scanning is being incorporated into all four years of the curriculum. The same mobile scanners that will be used chairside will be used in the Simulation Lab (D611) to teach the basics in the pre-clinical courses. The College has also added new cone beam CT machines that allow virtual treatment planning of implants as students will be able to place implants in the DMD Student Clinic for the first time in a special surgery suite.

- **DMD Student Clinics:** The DMD Student

Clinic, located on the second and third floors, each operatory is designed to meet high infection control standards. Operatories feature chairs that allow for computerized patient positioning, articulating lights and head rests, and over-the-patient dental units with fiber

## PROFILE



### **Reny de Leeuw, DDS, PhD, MPH**

Dr. de Leeuw is the Associate Dean for Academic Affairs and Professor, Regular Title Series, in the Division of Orofacial Pain. She received her DDS from the University of Groningen in the Netherlands in 1988 and a PhD in General Medicine from the same University in 1994. After a year in private practice, she entered the Orofacial Pain Program at the University of Kentucky. She earned her certificate in 1998 and then joined the faculty of the Division of Orofacial Pain. She was clinic director for a few years until she became the Division Chief in 2004. In 2015, she was appointed to the position of Academic Dean.

“I certainly enjoyed teaching the orofacial pain residents in the clinical setting, and I still see patients with them two half days per week. It keeps me engaged with the field of orofacial pain and active with patients. Working as Academic Dean gives me the opportunity to engage much more with students, staff, and faculty alike. I see how engaged and passionate everyone in the College is to provide the professional and graduate students and residents with the best education possible. The early exposure in the curriculum to clinical work, the extensive digital dentistry exposure and the small class size are top reasons why students choose UK as their College to study dentistry.

The collegial atmosphere and the breadth of experiences students gain are often cited as reasons why students look back at UK's College of Dentistry as an excellent  
continue

optic air-driven and electric handpiece controls. Electronic health records are in use and accessed, chair side, through cabinet-mounted computers in each operatory.

❓ **Technique Lab:** In the Technique Lab, located on the 6<sup>th</sup> floor, the preclinical technique lab and adjacent support labs include the most modern laboratory equipment. All workbenches have a dust collector and electric- and air-driven hand piece controls. Enhancements in technology, such as mannequin-based simulators and computer monitors are available at each student workstation. The instructor podium has access to centralized audio/visual services and the internet. The preclinical simulation laboratory was expanded and completely renovated during the summer of 2013 in a project exceeding \$4.7 million dollars with 70 workstations and a wet/dry lab.

❓ **Classrooms:** The primary classrooms for didactic instruction, MN 363, and MN 563, were updated in 2015 to include new HDLCD projections, smart podiums to utilize in displaying bench work and distance learning opportunities, and wireless internet enhancement.

- **Student Lounge:**

Student dentists have a dedicated area containing 210 lockers, seating for 20 students and a kitchen equipped with a microwave and a refrigerator. Computers with Ethernet access are also available for student use. In 2011, the Student Lounge was renovated with new ceiling tiles, furniture, refrigerators, microwaves, and a fresh coat of paint, thanks to donations from alumni. During the summer of 2013, an additional locker room was added (D-84) with 70 new lockers for the students.

**Faculty and Resident Clinics:** The building also houses clinics for Faculty and Residents in the areas of General Dentistry, Orthodontics, Oral and Maxillofacial Surgery, Orofacial Pain, Periodontics, and our Oral Pathology Laboratory. Many of these clinics have been renovated or expanded in the last several years, including upgrades to life safety systems, additions of cutting-edge equipment, and replacement of dental operatory equipment. These clinics provide training locations for our various residencies, as well as a location for our faculty to provide comprehensive dental care to private patients, University employees, and their families.

environment to become a skilled dentist. “

Dr. de Leeuw has also been active in research. Her interests include osteoarthritis and internal derangements of the temporomandibular joints, the relationship between psychosocial stressors, lifestyle factors and chronic orofacial pain, and functional imaging of chronic orofacial pain. Her research efforts have resulted in over 50 peer reviewed publications, over 40 abstracts and several book chapters. She is also the editor of 3 editions of the AAOP guidelines. Dr. de Leeuw served on the executive Boards for the American Academy of Orofacial Pain (AAOP) as well as the American Board of Orofacial Pain (ABOP). She is a Past-President of the AAOP and President-Elect for the ABOP. She served for several years on the editorial board of Oral Surgery, Oral Medicine, Oral Pathology and Oral Radiology. She has provided editorial services to numerous peers reviewed national and international journals.

- **Kentucky Clinic:** The Kentucky Clinic, a comprehensive ambulatory care center, contains a dental facility with 21 patient care operatories. This location houses Faculty Practices and our General Practice and Pediatric Dentistry Residencies.
- **The Orofacial Pain Clinic has 8 closed dental operatories and a large team room.** This facility is located on the second floor of the Kentucky Clinic. Kentucky Clinic is connected to the UK hospital by a covered skywalk, as is the College of Nursing and Health Sciences Learning Center. The top floor of the six-story building contains an audio-visual library and multimedia retrieval study area. The self- instructional programs in the curriculum, which are in the form of computer digitized slides, audio tapes, slide tapes, slide text and videocassettes, are available as well is the equipment necessary for their use. The library also has a microcomputer laboratory and a computer classroom with 55 personal computers.
- **Center for Oral Health Research (COHR):** The Center for Oral Health Research was officially approved by the UK Faculty Senate on March 6, 2000. This action brought into reality an initiative started by the administration and faculty of the UKCD in 1997. It created a focus and research infrastructure for the College, which linked it with the Medical Center and the larger UK academic environment. Moreover, the COHR will help to position the UKCD as a leader in accomplishing the goal of UK to become a top 20 institution by 2020. Since 2000, with creation of the COHR, UKCD research funds have increased to ~\$4-5 million annually. The COHR has propelled the UKCD from near last in NIH funding of dental schools in the country to near the top 20. These accomplishments reflect a multi-fold increase in grant submissions and publications by UKCD faculty. Another measure of research expertise is the emphasis of the research activities in the UKCD to link with other aspects of the UK academic environment, as well as with national collaborators.

**The UK Chandler Medical Center Library:** contains more than 240,000 volumes and provides electronic access to thousands of electronic journals and books. Individual carrels and group study rooms are available for Medical Center students and staff. The MCL underwent a complete renovation of the basement level in 2018 resulting in the creation of collaborative and quiet study spaces for students.

Several facilities outside the Medical Center also are used for teaching by the College of Dentistry. These include various state and federal institutions such as the Veterans Affairs Medical Center, which has two locations and many practitioner offices throughout Kentucky, and the Family Care Center in Lexington. The College also has four self-contained mobile dental units which provide dental services to children from low-income families. With these units, the College has expanded its pediatric services and affords student dentists broader clinical experiences.

## **Office of Admissions and Student Affairs**

The College of Dentistry's Office of Admissions and Student Affairs is organized to support the educational objectives and programs of the College by aiding and enriching student learning and contributing to the welfare and individual growth of students.

The office provides a wide range of services, activities, and programs which include:

- pre-dental advising and admissions counseling
- admission services/application processing
- student financial aid and debt management counseling
- career planning
- registration and academic records keeping
- curriculum support
- tutorial assistance
- academic success seminars
- testing services (National Board exams)
- academic and personal counseling
- assistance to classes and student organizations
- transcript services and letters of recommendation
- liaison and referral to other UK offices (Housing, Health Service, Counseling Center, Student Billing Services, Students Affairs Division, Registrar, etc.)
- first, second, third-, and fourth-year orientation
- college events
- student organizations

## **Technical Standards**

The College has approved a policy that defines the non-academic criteria for admission into, continued enrollment in, and graduation from the Doctor of Dental Medicine program. See Appendix A: Policy on Technical Standards for Dental Students.

## **D.M.D. Program**

### **Admissions**

The College of Dentistry seeks to enroll individuals whose academic preparation, personal qualities, and other qualifications suggest they will experience success in the curriculum and afterwards in the dental profession. Currently, the entering class composition is typically 60 percent Kentucky residents and 40 percent non-residents. The University of Kentucky College of Dentistry will consider for admission any applicant who demonstrates the ability to perform or learn to perform the skills listed in the College's Technical Standards policy. The College's Academic Performance Committee will monitor each student's demonstration of such knowledge and skills; specific standards are included in the *Student Handbook*. The ability to meet the following standards is a requirement for admission to the University of Kentucky College of Dentistry.

### **Predental Preparation**

Prospective applicants are encouraged to contact the Office of Admissions and Student Affairs early in their undergraduate careers for guidance on admission requirements. The College desires applicants who have the requisite academic preparation to meet the challenges of a rigorous curriculum. In addition to earning a bachelor's degree, these individuals should complete courses in both science and non-science subject areas to increase their likelihood of success in the dental program. Although many applicants each year major in the biological and natural sciences, students from all majors are

### **PROFILE:**

#### **Rowida Abdalla, D.D.S.**



Dr. Rowida Abdalla was born and raised in Cairo, Egypt where she graduated dental school and received specialty training and a master's degree in Operative Dentistry. Dr. Abdalla's experience in Egypt includes working at private practice, teaching operative dentistry as well as being a researcher in the national center for research, radiation, and technology at Cairo's atomic energy authority. Her research focused on the preventing the damaging effects of radiotherapy as a treatment for head and neck cancer on tooth structure. In 2012 she moved to the United States to start a 3-year training program at Eastman Institute for Oral health in Rochester, NY. She spent one year as a fellow in community dentistry working on the Smile Mobil and treating developmentally disabled patients at Monroe community hospital in Rochester, NY and two years as a resident in the advanced education for general dentistry program. Dr. Abdalla joined the Restorative Department at UKCD in July of 2015 as an Assistant Professor, her research interests include esthetic dentistry, radiation effects on teeth and dental materials and on carious cervical lesions.

“Dentistry combines artistic skills with science, it's a constantly changing field, I continue to learn new things every day. I choose academia because I love teaching and working with students, and I wanted to be in a learning environment and continue my research work. I am really impressed with the University of Kentucky college of dentistry, the atmosphere in the college is very positive, everyone here is extremely kind and knowledgeable. I really enjoy getting to know the students and I am truly proud of our graduates. I trained and worked in several dental schools in different parts of the world, and I consider the University of Kentucky college of dentistry the best place to learn and become a great dentist, while being around friendly and respectful faculty and staff, I really am lucky to be here.”

welcome. The criteria considered by the Admissions Committee includes the quality of the applicant's pre-professional preparation, Dental Admission Test (DAT) scores, knowledge of and exposure to the dental profession, letters of recommendation, a commitment to service and other relevant factors. Timing is always an important element in the application process. The College will work with students to advise them on ways to become competitive applicants. For more information, call (859) 323-6071.

### **Undergraduate Prerequisite Coursework**



➡The College uses a "rolling admissions system" whereby applicants are interviewed beginning in late August, the first offers of admission are made on Dec. 1, and the Admissions Committee continues to interview applicants until the class is filled.

The College is convinced that certain course work on the undergraduate level is necessary for quality performance in dental school. Therefore, the following courses are required for matriculating students:

- two semesters or three quarters of biology with laboratories.
- two semesters or three quarters of general chemistry with laboratories.
- two semesters or three quarters of organic chemistry with laboratories.
- one semester or two quarters of general physics with laboratory.
- two semesters or three quarters of English with emphasis on communications
- one semester of microbiology
- one semester of biochemistry

Prerequisite course work must be taken for a grade option, not pass-fail. Applicants are encouraged to pursue a well-rounded curriculum including courses both in the sciences and the humanities. Applicants are encouraged to take additional basic science courses. Examples of courses that will be helpful include anatomy (human), biochemistry, cell biology, embryology, genetics, histology, immunology, molecular biology, and physiology (animal and/or human) but only after degree requirements have been completed. An applicant's curriculum will be enriched if it also includes courses in the social sciences, history, literature, economics, philosophy, and psychology.

### **Application Process**

The University of Kentucky College of Dentistry is a member of AADSAS (American Association of Dental Schools Application Service). Candidates for admission are encouraged to apply early to receive the strongest consideration. The AADSAS electronic application becomes available in early June and UKCD has a Priority Deadline of October 1. To apply and obtain further information about the AADSAS application, visit: [www.adea.org](http://www.adea.org).

<http://www.adea.org>

(202) 789-7201

AADSAS

1400 K Street NW, Suite 1100

Washington, D.C. 20005

### **PROFILE:**



**Celene N. Steele**  
**UKCD – Class of 2022**

Celene Steele is from Lexington, Kentucky in the heart of the Bluegrass. Celene first became interested in dentistry her freshman year of college and fell in love with every aspect of the profession. Celene has been a Kentucky Wildcat through and through. She received a bachelor's degree from the University of Kentucky in Human Health Science and decided she did not want to leave Lexington just yet.

Celene is currently furthering her education by attending the University of Kentucky College of Dentistry. GO CATS! Celene is currently a 3rd year dental student. She has thoroughly enjoyed the vast preclinical and clinical experience thus far and is excited to focus on patient care for the next year and a half. UKCD is lucky to have many specialties under one roof to explore the many facets of dentistry. Celene is interested in doing a GPR and hopes to be able to practice with a career in dentistry where she can do a little bit of everything!

Organized dentistry has played a huge role in Celene's dental school career through involvement in the American Student Dental Association. Currently, Celene holds the philanthropy position through ASDA that is mainly involved in coordinating dental student nights. She has been involved with Mission Lexington ever since before she started dental school. Celene started as a dental assistant there, now a turned dental student provider, and will hopefully return upon graduation to be a volunteer dentist!

The College uses a “rolling admissions system” whereby applicants are interviewed throughout the fall with offers of admission made on **December 1**, and the Admissions Committee continues to interview applicants until the class is filled. The membership of the entering first- year class is usually confirmed by early February. Candidates who apply early in the admissions cycle are at a distinct advantage over those who wait much later to submit their AADSAS application and other credentials. The Office of Admissions and Student Affairs can provide applicants’ information and sound advice to insure that they complete the process in a timely way.

### **Transcripts**

An official transcript from each college or university attended must be supplied in the AADSAS application. A final transcript with degree posted must be sent to UKCD prior to matriculation for all applicants who have been admitted and will enroll.

### **Letters of Evaluation**

Two letters should come from science faculty members. The third letter should come from a dental practitioner the candidate has shadowed. A pre-professional committee evaluation may be substituted for the three letters only if the committee includes a dental practitioner. If it does not, an additional letter is required from a dental practitioner. Applicants must have the letters delivered to AADSAS; hardcopy letters sent to the Office of Admissions and Student Affairs will not be connected to the application.

### **Dental Admission Test**

Every applicant must take the Dental Admission Test (DAT). The DAT scores are considered along with a candidate’s academic record and other criteria in the admissions decision. The exam is offered nationwide by computer through Prometric Testing Centers. The DAT results should not be more than three years old and the highest set of scores will be used. Information on the DAT is available on the American Dental Association website at:

**[www.ada.org/](http://www.ada.org/)**

Direct questions regarding admission or arranging a visit to the college to: (859) 323-6071; email: [UKCDadmissions@uky.edu](mailto:UKCDadmissions@uky.edu)

**College of Dentistry Office of Academic and Student Affairs**

**M-134 Chandler Medical Center**

**University of Kentucky**

**Lexington, KY 40536-0297**

**(859) 323-6071**

**[dentistry.uky.edu](http://dentistry.uky.edu)**

**email: [UKCDadmissions@uky.edu](mailto:UKCDadmissions@uky.edu)**



[www.ada.org](http://www.ada.org)

(312) 440-2689

Dental Admission Testing Program

American Dental Association

211 East Chicago Ave.

Chicago, IL 60611-2678

## **Interviews**

Applicants are invited to participate in an interview at the College of Dentistry after a holistic review of their materials and interviews are scheduled on specific dates throughout the admissions cycle. All application materials must be received by the Admissions Office before an interview can be scheduled. Since Dec. 1 is the AADSAS national notification date, well-qualified applicants who interview prior to this date have a greater likelihood of being admitted than those who interview afterwards.

## **Residency Status**

The Council on Postsecondary Education oversees the residency requirements for all public colleges and universities within the Commonwealth of Kentucky. These requirements are listed in the University of Kentucky Bulletin. Questions regarding residency status should be referred to the University's Registrar Office at <http://www.uky.edu/Registrar/>.

## **Personal Health**

In accordance with American Dental Association standards, all students must be able to demonstrate prior to and throughout their enrollment that they are physically and mentally qualified to undertake dental studies; please refer to the Technical Standards policy in Appendix 1 below or contact the Office of Admissions and Student Affairs for questions. Each student must submit a medical history form and an immunization record at the time of matriculation. All applicants meeting the appropriate academic requirements and technical standards shall be considered equally for admission to any academic program regardless of race, color, religion, sex, marital status, beliefs, age, national origin, sexual orientation, or disability.

## **Student Financial Aid**

### **Cost of Attendance**

Tuition and fees for the 2020-2021 academic year are \$35,584 for Kentucky residents and \$76,684 for non-residents. Expenditures for instruments and their sterilization, books, clinic

attire, and CPR comprise the remainder of the required curriculum expense. The tuition and fees are subject to change.

Primary responsibility for meeting the cost of dental education rests with the student dentist and his or her family. However, the College's Financial Aid Coordinator, located in the College of Dentistry, assists students in making application for various types of financial assistance. The major sources of funding are loan programs administered by the federal government. Eligibility for financial aid is determined by the following formula:

$$\begin{array}{l} \text{Cost of Attendance (curriculum \& living expenses) } \mathbf{minus} \\ \text{Expected Family Contribution (as measured by federal formula)} \\ \mathbf{equals \text{ Financial Need}} \end{array}$$

The Financial Aid Coordinator, who is a member of the Office of Academic and Student Affairs, endeavors to meet the demonstrated financial need of all student dentists to the extent of available funds. Since school managed funds are limited, awards from these sources will be determined based on in-state tuition and parent information on the federal application.

About 95 percent of enrolled student dentists qualify for and receive some type of financial assistance. Applicants wishing to investigate financial aid options are encouraged to consult the financial aid coordinator. Financial need is not a criterion for admission to the College of Dentistry. Additional information on loan, and scholarship programs can be obtained by accessing the College of Dentistry webpage on financial aid under "DMD Students > Financial Aid and Estimated Costs."

Any question related to financial aid should be directed to:

**Office of Academic and Student Affairs**  
University of Kentucky  
College of Dentistry  
D-155 Dental Science Building  
Lexington, KY 40536-0297  
Telephone: (859) 323-5280  
Fax: (859) 257-5550  
Email: donald.brown@uky.edu

### **Career Planning and Counseling**

Student dentists receive formal instruction in the investigation and development of career options and practice planning during all four years of the curriculum. Faculty and staff participate in counseling student dentists. The College maintains career resource information on the distribution of dental manpower and demographic data on all Kentucky counties; limited information regarding other states is also available. The College also provides counseling and placement referral services to student dentists and practitioners.

Most individuals incur some indebtedness to help finance their dental education. Since the amount of educational loans received affects the career options available at graduation, debt management counseling is offered throughout the period of enrollment.

## **Curriculum**

The University of Kentucky, College of Dentistry, in meeting its responsibility to the Commonwealth, the University, the dental profession and the student, is dedicated to the education of a dentist who meets defined levels of skills and knowledge and has demonstrated ethical behavior and judgment that will benefit the public. The content and sequencing of the curriculum is maintained so that students should be able to complete the curriculum satisfactorily in four years and be awarded the degree of Doctor of Dental Medicine (D.M.D.).

The College of Dentistry offers a curriculum that prepares the student for the general practice of dentistry. Since the health needs of Kentucky and the nation are constantly changing, an effective curriculum in dentistry requires relatively frequent revision of courses and requirements. For this reason, the curriculum described in this bulletin is subject to change from year to year, not only in content and sequencing but also in the educational methodology utilized.

The dental curriculum is composed of four categories of study: biological sciences, behavioral science, preclinical dentistry, and clinical dentistry. Courses in these areas may be taught by lecture, seminar, self-instruction, or any combination of the above formats. Laboratory and clinical settings provide supplemental learning experiences for the didactic information which the students receive.

In the clinical setting, students treat patients under the supervision of the clinical faculty. Comprehensive dental care for the patient is emphasized and so, because of the varying needs of individual patients, the objectives of each clinical treatment experience by each student will vary. The concept of comprehensive dental care permits learning experiences in all the clinical disciplines of dentistry.

Students, faculty, and staff of the College of dentistry are expected to adhere to the Code of Professional and Academic Responsibility, and the Medical Center's Behavioral Standards in Patient Care, and Health Care Colleges Code of Student Professional Conduct. These documents call for high standards of professional and human behavior in caring for patients.

Extramural experience in dental practice is a required component of the curriculum. Students are placed in the offices of dental practitioners, public institutions, or other health delivery systems in AHEC approved urban and rural areas throughout the state of Kentucky. One of the goals of the extramural experience is to provide the student with a view of dentistry as it is practiced.

In addition to the core, or required curriculum, the College offers several elective courses in a variety of biological and clinical dentistry subjects. Electives provide an effective way to satisfy the individual needs and interests of the students. Fourth-year students are required to take two elective courses. Enrollment in additional elective courses requires the approval of the course director and the appropriate Academic Performance Committee.

During study, any student may be denied permission to continue in the formal educational program if, in the opinion of the faculty and administration, that student's character, attitudes, mental or physical fitness cast grave doubt upon the student's capabilities as a dentist. The Doctor of Dental Medicine degree is awarded to those students who have satisfactorily completed every required component of the dental curriculum and have applied for graduation.

**Below is the current listing of the DMD program courses by year; for a more detailed description about each course please see Appendix B**

**First Year**

ANA 530	Combined Histology and Special Oral Microanatomy	5
ANA 534	Dental Gross Anatomy, Embryology and Neuroanatomy for Dental Students	6
CDE 814	Patients, Dentists and Society I	1
CDE 815	Fundamentals of Dental Public Health	2
CDS 812	Normal Human Growth and Development	1
CDS 813	Management I: Introduction to Management for the Dentist	2
CDS 815	Introduction to Clinical Dentistry	2
CDS 818	Profession of Dentistry I	1
CDS 819	Special Topics in Dentistry I	1
OBI 812	Dental Biochemistry	5
OBI 814	Dental Human Function	5
ODM 810	Basic Principles in Oral and Maxillofacial Radiology	2
ODM 814	Oral Diagnosis/Oral Medicine & Treatment Planning	2
PER 810	Periodontics	3
RSD 810	Foundations in Operative Dentistry I	3
RSD 811	Principles of Dental Anatomy, Morphology and Occlusion Lecture	3

RSD 812	Principles of Dental Anatomy, Morphology and Occlusion Laboratory	3
RSD 813	Dental Cariology	1
RSD 814	Foundations in Operative Dentistry II	3
RSD 822	Principles of Dental Occlusion and Articulation	3

## **Second Year**

CDE 824	Communication in the Dental Health Care Setting	1
CDE 826	Dental Practice Management I	1
CDS 821	Local Anesthesia	1
CDS 823	Management II: Introduction to Clinical Patient Management	1
CDS 824	Oral Diagnosis and Treatment Planning	1
CDS 825	Dental Implantology	2
END 824	Principles of Endodontics	2
END 826	Preclinical Endodontics	2
OBI 828	Immunity, Infection and Disease for the Student Dentist	5
OBI 836	Dental Pharmacology (continues into 3 <sup>rd</sup> year)	
ODM 820	Oral and Maxillofacial Radiology and Diagnostic Imaging	2
ODM 821	Clinical Oral Diagnosis I	1
ODM 830	Management of the Medically Compromised Dental Patient (continues into 3 <sup>rd</sup> year)	
OPT 820	General Pathology for Student Dentists	3
ORT 822	Orthodontics	3
OSG 820	Oral Surgery I	1
PDO 822	Pediatric Dentistry I	2
PER 821	Clinical Periodontics II	2
PRO 820	Preclinical Complete Denture Prosthodontics Lecture	2
PRO 821	Clinical Complete Denture Prosthodontics	1
PRO 822	Preclinical Complete Denture Prosthodontics Laboratory	2
PRO 824	Removable Partial Dentures	2
RSD 821	Clinical Restorative Dentistry I	3
RSD 823	Restorative Dentistry II	1
RSD 824	Preclinical Restorative Dentistry II (Lab)	2
RSD 825	Restorative Dentistry III	1
RSD 826	Preclinical Restorative Dentistry III	2

### **Third Year**

CDE 830	Advanced Concepts in Dental Public Health	1
CDS 831	Conscious Sedation	1
CDS 833	Management III: Clinical Patient Management	1
CDS 835	Advanced Dental Implantology	2
CDS 836	Diagnosis and Management of Orofacial Pain	3
END 830	Endodontics II	1
END 831	Clinical Endodontics I	1
OBI 836	Dental Pharmacology	3
ODM 830	Management of the Medically Compromised Patient	3
ODM 831	Clinical Oral Diagnosis II	2
OPT 830	Oral Pathology I	3
OPT 832	Oral Pathology II	1
OSG 830	Oral Surgery II	1
OSG 831	Oral Surgery Rotation I	1
PDO 831	Clinical Pediatric Dentistry I	1
PDO 834	Pediatric Dentistry II	2
PER 830	Periodontics III	2
PER 831	Clinical Periodontics III	2
PRO 831	Clinical Removable Prosthodontics	2
PRO 834	Preclinical Restorative Dentistry III	4
PRO 836	Advanced Fixed Prosthodontics and Treatment Planning	2
RSD 831	Clinical Restorative Dentistry II	4
RSD 835	Advanced Esthetics in Restorative Dentistry	2

## **Fourth Year**

CDE 841	Dental Practice and Field Experience	6
CDE 844	Dental Practice Management II	2
CDS 843	Management IV: Clinical Patient Management	1
END 841	Clinical Endodontics II	1
ODM 841	Clinical Oral Diagnosis II	1
OPT 840	Oral Pathology III	1
ORT 841	Clinical Orthodontics	1
OSG 841	Oral Surgery Rotation II	1
PDO 841	Clinical Pediatric Dentistry II	2
PER 841	Clinical Periodontics IV	4
PRO 841	Advanced Clinical Removable Prosthodontics	2
RSD 840	Restorative Dentistry Update	1
RSD 841	Clinical Restorative Dentistry III	3



## Postdoctoral Education

The College of Dentistry offers advanced education programs in several areas. The D.M.D. or equivalent degree is necessary for acceptance into any of these programs. Residents of Kentucky and non-residents, who have strong academic and professional records are given consideration and are encouraged to apply. Stipends are paid to general practice, oral and maxillofacial surgery, orofacial pain and

pediatric dentistry residents. Graduate students in periodontics, orofacial pain, and orthodontics register for academic credit. Students should not plan to practice while enrolled in any of these programs.

## Applying for Postdoctoral Programs

The University of Kentucky participates in **PASS**, the **Postdoctoral Application Support Service** provided by the American Dental Education Association. To complete a PASS application or to learn more about the service, visit the ADEA website at [www.adea.org/PASS](http://www.adea.org/PASS). PASS Application Cycle for processing applications on May 17.

The General Practice Residency, Periodontology and Orofacial Pain programs at the University of Kentucky, College of Dentistry have their own application process. To receive an application, contact the office of the Division Chief or Program Director.

## Endodontics

The mission behind offering this one (1) year endodontic scholars' program is for the dentist to become more familiar with advanced procedures in endodontic therapy while being exposed to evidence-based practices. Participants will have the opportunity to treat patients presenting with complex anatomy making clinical endodontics challenging. In addition, through review of endodontic therapy lectures, case presentations, review of literature and interdisciplinary seminars in treatment planning, participants will gain greater understanding in treatment procedures, and the decision-making process. Participants will be exposed to endodontic surgery and can treat cases utilizing a surgical operating microscope in addition to the latest technologies in imaging and treatment.

## Program Directors

Endodontics – Mark Schachman, D.M.D.

General Practice Residency – John Burt, D.M.D.

Oral and Maxillofacial Surgery – Joseph Van Sickels, D.D.S.

Orofacial Pain – Isabel Moreno-Hay, D.D.S., Ph.D.

Orthodontics – Cindy Beeman, D.M.D., Ph.D.

Pediatric Dentistry – Cristina Perez, D.D.S., M.S.

Periodontics – Dolph Dawson, D.M.D., M.S., MPH

### **Course Objectives:**

- Participants will review classic and current endodontic literature and understand the relationship
  - to current modes of therapy.
- Participants will be delivering non-surgical and surgical endodontic treatment to patients.
- Participants will attend interdisciplinary seminars, treatment planning reviews and prepare and present their endodontic cases for discussions.
- Participants will become familiar and understand the advantages of utilizing a surgical operating microscope for treatment and documentation.
- Participants will be exposed to the use of 3D imaging with CBCT and understand its use in endodontics.
- Participants will be exposed and understand endodontic surgery from both didactic and clinical cases.
- Participants will be calibrated and required to teach DMD students in both SIM and clinical settings at the University of Kentucky College Of Dentistry.

### **General Practice Residency in Dentistry**

The General Practice Residency Program is designed to extend a dental school graduate's capability to perform all phases of general dentistry, UKCD's accredited one-year GPR program provides additional experience and advance training to dentists in both an outpatient and hospital setting. An optional second year of residency is available but is not an accredited program by the Commission on Dental Accreditation. Residents also gain experience with the management of medically complex and special needs patients. The GPR program receives approximately 32,000 patient visits per year. Clinical experience accounts for the majority of the residents' schedules.

- Focus on management of medically, mentally, and physically complex patients
- Gain operating room experience
- Full IV Moderate Sedation training, following ADA recommended didactic and clinical guidelines and required by many states for dentists to receive sedation permits
- Emphasis on full scope of general dentistry from restorative, fixed and removable partial dentures to endodontics, periodontics and minor oral surgical procedures, implant placement and restoration
- Considered a House staff Resident of the Graduate Medical Education Department and is afforded all benefits therein

- Takes after-hours EMG Call
- Rotations in VA Medicine, VA Anesthesia, Private Practice Periodontics, Oral Surgery, and Orofacial Pain
- Stipend available
- Length of program: 12 months
- Applicants accepted per year: 7

### **Oral and Maxillofacial Surgery**

The Division of Oral & Maxillofacial Surgery offers an accredited six-year integrated Oral and Maxillofacial Surgery/MD Residency Program designed to offer residents extensive training in both an inpatient and outpatient setting. Programmatic areas of emphasis include outpatient anesthesia, dentoalveolar and implant surgery, maxillofacial trauma, orthognathic surgery, and head and neck pathology.

#### **HIGHLIGHTS**

- Residents provide care in multiple facilities, including Chandler Medical Center, the College of Dentistry, the Veteran's Administration Hospital, and the University of Kentucky Children's Hospital
- Chief residents participate in the preoperative and postoperative management of major surgery cases at the faculty practice clinic
- Residents participate in the planning and execution of conventional and virtual planned surgical cases
- Stipend available during select years of program
- Applicants accepted per year: 3

### **Orofacial Pain**

The Division of Orofacial Pain offers an accredited two-year residency program specifically designed for dentists who wish to gain a broad-based experience in the field of orofacial pain. The program includes didactic, clinical, and research components. Residents evaluate and manage chronic orofacial pain patients in a multiprofessional team with psychologists and physical therapists. Residents may also can participate in ongoing research efforts in the clinic, depending on the availability and type of research activity at the time.

#### **HIGHLIGHTS**

- Residents spend approximately 50 percent of their time clinically evaluating and managing orofacial pain, oral medicine, and sleep apnea patients

- Program encourages a medical-biopsychosocial model for the diagnosis and management of orofacial pain rather than manual dental skills to alter dental structures
- Emphasis placed on establishing a proper diagnosis and management plan, including collaborations with appropriate medical specialists
- Residents may extend their study to earn a Master of Science Orofacial Pain

### **Orthodontics**

The Division of Orthodontics provides a robust didactic and clinical experience in comprehensive orthodontics, with emphasis on goal-oriented diagnosis and treatment of different malocclusions. In the accredited graduate program, faculty members teach multiple treatment modalities, including functional therapy, comprehensive and interceptive care, straight-wire systems, lingual therapy, and thermoplastic, removable treatment. Upon successful completion of the program, residents receive a Master of Science degree and a certificate in orthodontics. In addition to the successful completion of clinical and didactic requirements, residents must successfully investigate and defend an independent research project and submit a manuscript suitable for publication to be eligible for graduation.

### **HIGHLIGHTS**

- Interdisciplinary care emphasized, working closely with periodontics, prosthodontics, oral and maxillofacial surgery, and restorative dentistry
- Gain experience in diagnosis and treatment of patients with cleft lip/palate and other craniofacial anomalies
- Residents serve as DMD teaching assistants (limited to the orthodontic component of the curriculum during their second and third year) earning a stipend
- Program length: 34 months
- Applicants accepted per year: 3

### **Pediatric Dentistry**

The Division of Pediatric Dentistry offers an accredited program for dentists interested in building on their foundational knowledge and experience in treating the dental needs of child patients, including children with special healthcare needs. This program covers a full array of diagnostic and treatment experiences in different scenarios, including clinic, operating room, oral and intravenous sedation, and cases in the emergency department. The primary objective of the program is the development of skills in clinical pediatric dentistry, with a strong component in interceptive and Phase 1 orthodontics and presurgical orthopedics. Upon program completion, residents receive a certificate in pediatric dentistry and meet qualifying examination eligibility requirements of the

American Board of Pediatric Dentistry.

### **HIGHLIGHTS**

- Focus on the treatment of medically, mentally, and physically compromised children and adolescents
- Exposure to the management of the developing dentition for children and adolescents
- Rotations in Anesthesia, Kochis Orthodontic Private Practice, UK Hospital EMG Rm Rotation, Cleft Palate Clinic Rotation, UK General Pediatrics to include Pediatric Specialty Clinics and two Pediatric Dental Private Practices
- Takes after-hours EMG Call
- Considered a House staff Resident of the Graduate Medical Education Department and is afforded all benefits therein
- Length of program: 24 months
- Stipend available
- Applicants accepted per year: 4

### **Periodontology**

The Division of Periodontology produces graduates with advanced specialty training in the surgical and non-surgical treatment of periodontal disease. The program is a full-time 36-month course of study, with strong emphasis on evidence-based decision making, consisting of clinical, research, and didactic components. The goal of the program is to prepare individuals for careers in either academic periodontology or private specialty practice. Upon completion, residents receive a certificate in periodontology, a master's degree, and meet the eligibility requirements of the American Board of Periodontology.

### **HIGHLIGHTS**

- Numerous opportunities for interdisciplinary work with both dental and medical clinicians
- Rotation on anesthesiology (all graduate students are required to become ACLS-certified)
- Focus on management of medically compromised patients, implant surgery, conscious sedation, and cosmetic surgery
- Exposure to a wide range of therapeutic modalities
- Applicants accepted per year: 2-3

## **Other Educational Opportunities**

Details on additional educational offerings are available online at [dentistry.uky.edu/academics](http://dentistry.uky.edu/academics)

- Dental Assistant Training
- Externships in Craniofacial Genetics, Oral and Maxillofacial Surgery, and Oral Medicine

## **Digital Dentistry**

With over 40 intraoral scanners, a variety of chairside milling and 3D printers, lab milling machines, and a long list of digital dentistry CAD/CAM software solutions, UK College of Dentistry offers dental students a complete digital dentistry learning experience.

Dental students begin gaining hands-on experience the first year of their dental curriculum and build upon their knowledge and skill with digital dentistry solutions and tools throughout their time at the college. By graduation, student dentists have had the opportunity to gain experience with treatments such as same-day crowns, placing implants using restorative-based guided surgery methods, and much more.

## **Patient Care**

The University of Kentucky, College of Dentistry Student Dental Clinic seeks to provide comprehensive care in an atmosphere that simulates the private group practice environment to optimize the clinical experience of the dental students and their patients.

From their first appointment, patients are made aware of their disease state and risk of further dental disease. An emphasis is placed on educating patients concerning their own dental health and prevention of dental disease. From their first interaction in the student dental clinic patients are encouraged to participate in the decision making, treatment planning and delivery of their care. Patients are assigned to a Team and a Team Leader who delegates responsibility for patient care to student members of his or her team. Patient assignments are based on a thorough examination and review of a tentative treatment plan. Since the Team Leader is a faculty member aware of individual student capabilities and skill levels, more appropriate matches of patient need and desires with student needs and abilities are possible.

Team Leaders monitor the progress of patient care delivery of their team of students and are responsible for development and evaluation of clinical patient management skills throughout the student's clinical years. Team Coordinators assist the Team Leaders with these responsibilities, and they assist dental students with their patient and clinical management.

Teams are considered large group practices and all treatment is supervised by either discipline-specific faculty or team leaders who are responsible for evaluation of the student performance in their respective clinical disciplines.

### **Public Health Service**

Service-learning opportunities are part of the curriculum for our student dentists and residents. They are expected to participate in extramural service programs and encouraged to volunteer their time to treat the oral health needs of underserved people in our Commonwealth. Student dentists begin their clinical education with patients in a school-based sealant project, Seal Kentucky, in rural Kentucky. During their fourth-year student dentists participate in a community-based learning experience providing services to underserved patients throughout the Commonwealth. In addition, student dentists participate in numerous oral health education and promotion activities that seek to increase awareness about the importance of oral health. Throughout all of the students' clinical experience, students are able to participate in elective extramural externships which can be in private offices, federally qualified health centers, other university clinics, and in specialty clinics.

As part of the dental-safety net, the College of Dentistry provide comprehensive dental services to large number of underserved and underinsured individuals through its intramural and extramural clinics and its mobile van program. Faculty members provide high-quality comprehensive, general and specialized dental care at the faculty practice. Student dentists and dental residents render dental services under the supervision of faculty members at the College of Dentistry's clinics. Saturday morning clinics serving needy children are available.

### **Alumni Affairs**

The College of Dentistry and the University of Kentucky College of Dentistry Alumni Association offer a variety of regularly scheduled educational and social programs to College alumni. Among these are the Fall Symposium and Alumni Weekend, the summer Golf Scramble, and the annual Tasting and Silent Auction which support alumni special events and student scholarships and programs, as well as special continuing education offerings directed specifically at College alumni.

The University of Kentucky College of Dentistry Alumni Association conducts its activities with several purposes in mind. First and Foremost, it is responsible for promoting the best interest and welfare of the University of Kentucky with specific attention given to the College of Dentistry. The Alumni Association strives to acquaint the membership with the achievements of their alma mater and focuses on the University 's many contributions to the citizens of Kentucky and the nation. It also provides information on institutional goals

and needs and encourage alumni to maintain close ties with the College of Dentistry.

The University of Kentucky Alumni Association is in the King Alumni House while the College of Dentistry Alumni Association is an activity of the Dean's Office.

*Perspectives*, the College of Dentistry alumni publication, is mailed to alumni and friends once during the academic year. It provides information and features of interest designed to foster closer ties with the University of Kentucky College of Dentistry.

### **Philanthropy**

Over 150 years ago, the institution, which became the University of Kentucky, was established with financial help from local citizens. These philanthropic gifts began the University's distinguished tradition of private support. Alumni and friends of the College of Dentistry have continued to invest in the limitless potential of UKCD and its students. Donors to the College are proud of their school and wish to share their experiences with student dentists through his or her own gift. The UKCD supporters have provided resources for student scholarships, faculty positions, educational experiences, and facility renovations. Donations to the College are made through the College's Director of Philanthropy. Contributions from alumni and friends ensure that a high-quality learning experience is available for all students who come to UKCD seeking a dental education and a promising future.





## Lexington



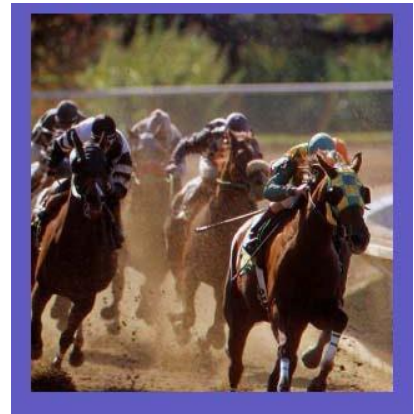
An academic institution is more than its campus and classrooms; it is also the surrounding environment which supports social, emotional, and intellectual development.

Located in the internationally famous Bluegrass Region of Kentucky, Lexington is 84 miles south of Cincinnati and 80 miles east of Louisville. With a population of 260,512, Lexington offers a multitude of job opportunities, entertainment, dining, recreation, and cultural events that add a special dimension to education.

Encompassing two centuries of history, Lexington was one of the first settlements beyond the Allegheny Mountains. Today, historical homes and monuments throughout the city remind citizens and visitors of Lexington's gracious heritage. This, along with its increasing business community with large corporations such as Lexmark, Ashland Oil, Procter and Gamble, General Electric, and nearby Toyota help create the unusual atmosphere of a thriving, growing city which still retains the appeal of a small community.

Cultural life is alive and well in Lexington. The Council of the Arts, Inc., composed of many non-profit corporate organizations, enhances the area's cultural resources with an active program in all the fine arts. Lexington is one of the few cities of its size to offer a philharmonic orchestra and a ballet company. Community theater groups perform regularly and national touring groups present Broadway attractions at the historic Opera House. The area also enjoys the unique exhibits at the nationally accredited Art Museum located in the University's Otis A. Singletary Center for the Arts.

Lexington is known as the horse capital of the world, and for good reason. Within a 35-mile radius of downtown, several hundred horse farms can be found ranging in size from a few acres to 6,000 acres. Area farms breed and train some of the world's best thoroughbred, standardbred, and saddlebred horses. Famous horse sites in the region include the Kentucky Horse Park, Calumet Farm, and Keeneland Racecourse. Tourists also are attracted to the greater Lexington region by the historic and beautiful scenery of the Bluegrass, which includes the Red River Gorge, Shakertown at Pleasant Hill, Fort Boonesborough, and an excellent state park system.

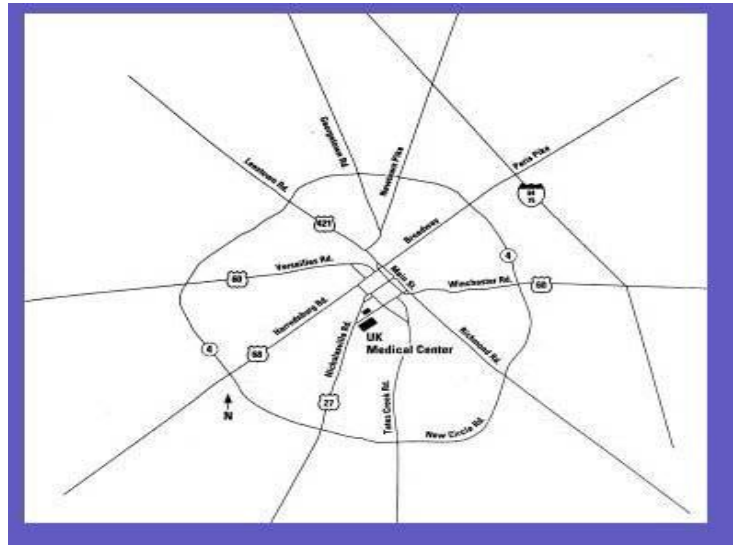


## Directions to the University Kentucky College of Dentistry

### Directions from I-75 South

#### /I-64 East:

After the merger of I-75 South and I-64 East, take the first exit marked Newtown Pike (Exit 115). Veer right off the exit and follow Newtown Pike toward downtown Lexington. After traveling approximately 3.3 miles, turn left onto West Main Street (Route 25). Continue West Main Street through 7 traffic lights and turn right onto Rose Street. Follow Rose Street until you see the pedway that connects the Chandler Medical Center with the Kentucky Clinic. Turn left just before the pedway and follow the signs for Hospital parking. Enter the hospital through the



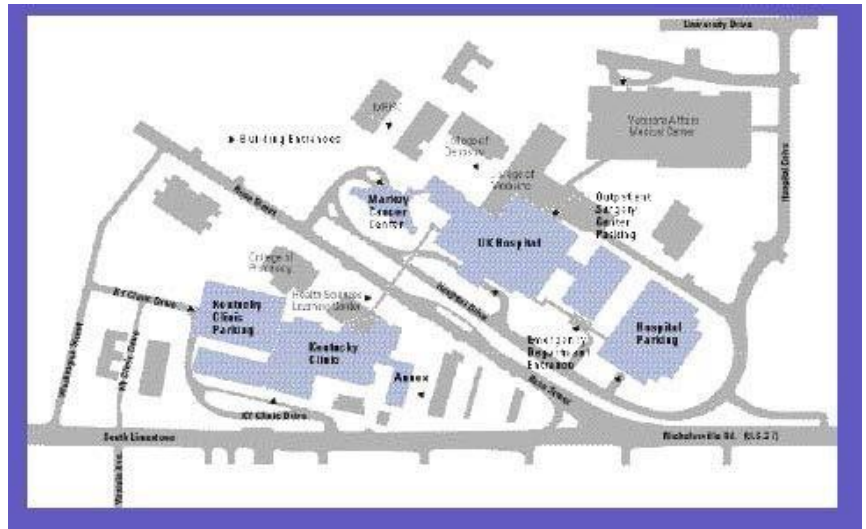
main entrance revolving door and receive further directions from the staff at the information desk.

### Directions from I-75 North/I-64 West:

I-64 West: Exit on I-75 South and take the first exit, which is Winchester Road (Route 60). Follow directions below.

#### I-75 North/I-64 West:

Exit on Winchester Road (Route 60). Follow Winchester Road West toward downtown Lexington. After 10 traffic lights the road will split; stay to the left, following the sign for Route 60 West. At the next stop light (approximately 4 miles from the interstate exit), turn right onto



Main Street. Immediately make your way into the left lane and turn left at the first traffic light onto Rose Street. Follow Rose Street until you see the pedway that connects the Chandler Medical Center with the Kentucky Clinic. Turn left just before the pedway and follow the signs for Hospital parking. Enter the hospital through the main revolving door and receive further directions from the staff at the information desk.

## **Appendix A: Technical Standards for Dental Students**

### **Policy Objective**

To define the non-academic criteria for admission into, continued enrollment in, and graduation from the Doctor of Dental Medicine program.

### **Policy Statement:**

The University of Kentucky, College of Dentistry is committed to ensuring that the opportunity to pursue oral health education is available to all qualified persons. In this spirit, all qualified individuals will be considered for admission. Moreover, the College will work to ensure that all qualified students, consistent with Section 504 of the Rehabilitation Act of 1973 and the Americans with Disabilities Act, will have the opportunity to succeed in the College's programs of study.

The College recognizes that the Doctor of Dental Medicine (D.M.D.) degree carries with it the full authority of the institution and communicates to those who might seek the services of the bearer that he or she is competent to practice dentistry. The D.M.D. degree is unique in that the graduate is prepared and, when licensed, can practice all disciplines of the dental profession. Therefore, the student must demonstrate the knowledge, skills, and attitudes that the faculty has determined are essential for the practice of dentistry. The student must acquire both cognitive and technical skills to negotiate the curriculum.

The following technical standards describe the essential functions that students must demonstrate to fulfill the requirements of a general dental education, and thus, are prerequisites for *entrance, continuation, and graduation* from the College. Students must possess the skills and abilities that will allow them to successfully complete the course of study and receive the full benefit of dental education. While enrolled in dental school, students must direct and perform treatment of the College's patients. The College has the responsibility for ensuring the safety of the patients. Treatment must be completed safely and within an acceptable time.

The University of Kentucky, College of Dentistry will consider for admission any applicant who demonstrates the ability to perform or to learn to perform the skills listed in the College's Technical Standards policy. The College's Academic Performance Committee will monitor each student's demonstration of such knowledge and skills; specific standards are included in the *College Bulletin* and *Student Handbook*. Applicants are not required to disclose the nature of their disability(ies) to the Admissions Committee; however, any applicant with questions about these technical standards is strongly encouraged to discuss the issue with the Admissions Committee Chair before the interview. Upon the request of an applicant or a student, reasonable accommodations will be provided. The ability to meet the following standards is a requirement for admission to the University of Kentucky College of Dentistry.

## **Technical Standards for Admissions for The University of Kentucky College of Dentistry**

### **Standards**

#### **1. Motor Skills**

GENERAL: A student should have sufficient motor function to execute movements reasonably required to provide general care to patients.

SPECIFIC: A student must possess the motor skills to directly perform palpation, percussion, auscultation and other diagnostic maneuvers, basic laboratory tests, and diagnostic procedures. Such actions require coordination of gross and fine muscular movements, equilibrium, and functional uses of the senses of touch and vision.

SPECIFIC: A student must be able to perform basic life support including CPR, transfer, and position disabled patients, physically restrain adults and children who lack motor control, and position and reposition himself or herself around patient and chair in a sitting or standing position. A student must not hinder the ability of co-workers to perform prompt care. A student must be able to operate controls, move high-speed or low-speed dental drills with precision of less than one millimeter, and use hand instrumentation including scalpels for surgical procedures.

#### **2. Sensory/Observation**

GENERAL: A student must be able to acquire a predetermined level of required information through demonstrations and experiences in basic and dental science courses.

SPECIFIC: Such information includes, but is not limited to, information conveyed through; 1) physiologic and pharmacological demonstrations in animals; 2) microbiological cultures; 3) microscopic images of microorganisms and tissues in normal and pathologic states; and 4) demonstration of techniques using dental models. A student must be able to acquire information from written documents, and to evaluate information presented as images from paper, films, slides, or video. A student must be able to interpret x-ray and other graphic images. A student must be able to benefit from electronic and other instrumentation that enhances visual, auditory, and somatic sensations needed for examination or treatment.

GENERAL: A student must be able to accurately observe a patient, at a distance and close at hand, and observe and accurately interpret non-verbal communications when performing dental operations or administering medications.

SPECIFIC: A student must be able to perform dental examinations and treatment that requires the use of sight and touch. He or she must be able to see fine detail, focus at a variety of distances, and discern differences and variations in color, shape, and texture that are necessary to differentiate normal and abnormal soft and hard tissues. He or she must be able to use tactile senses to diagnose directly by palpation and indirectly by sensations transmitted through

instruments. A student must also possess the visual acuity to read charts, records, radiographs, small print and handwritten notation, and distinguish colors intra- and extra-orally.

### **3. Communication**

GENERAL: A student must be able to: communicate effectively and sensitively with patients; convey or exchange information at a level allowing development of a health history; identify problems; explain alternative solutions; and give directions during treatment and post-treatment. Communication includes speech and writing. A student must be able to communicate effectively and efficiently in oral and written English with all members of the health care team.

SPECIFIC: A student must have sufficient facility with English to retrieve information from texts and lectures and communicate concepts on written exams and patient charts; elicit patient backgrounds; describe patient changes in moods, activity, and posture; and coordinate patient care with all members of the health care team. A student must be able to communicate in lay language so that patients and their families can understand the patient's conditions and, thereby, be more likely to comply with treatment and preventive regimes.

SPECIFIC: In any case where a student's ability to communicate through these sensory modalities is compromised, he or she must demonstrate alternative means of communicating with instructors, patients, and other members of the health care team.

### **4. Cognitive**

GENERAL: A student must be able to measure, calculate, reason, analyze, integrate, and synthesize.

SPECIFIC: A student must be able to comprehend three-dimensional relationships and to understand the spatial relationships of structures. Problem solving, a critical skill demanded of dentists, requires all these intellectual abilities. A student must be able to perform these problem-solving skills in a timely fashion.

### **5. Behavioral**

GENERAL: A student must possess the emotional health required for full use of his/her intellectual abilities, the exercise of good judgment, the prompt completion of all responsibility's attendant to the diagnosis and care of patients, and the development of mature, sensitive, and effective relationships with patients.

SPECIFIC: A student must be able to tolerate physically taxing workloads and to function effectively under stress. He or she must be able to adapt to changing environments, display flexibility, and learn to function in the face of uncertainties inherent in the clinical problems of patients. Compassion, integrity, concern for others, interpersonal skills, interests, and motivation, are all personal qualities that will be assessed during the admissions and

educational processes. A student must be able to manage apprehensive patients with a range of moods and behaviors in a tactful, congenial, personal manner so as not to alienate or antagonize them. A student must be able to accept criticism and respond by appropriate modification of behavior.

## **APPENDIX: B College of Dentistry Course Descriptions**

### **ANA ANATOMY AND NEUROBIOLOGY**

#### **ANA 530 Combined Histology and Special Oral Microanatomy (5)**

An analysis of the histological structure and organization of the human body, including an especially detailed treatment of the tissues and organs related to the oral cavity.

**Prerequisite(s):** Admission to the College of Dentistry or some background in biology and consent of the instructor.

#### **ANA 534 Dental Gross Anatomy, Embryology and Neuroanatomy (6)**

This class presents principles of human anatomy, integrated with embryology and neuroanatomy and with particular emphasis on the head and neck to first year dental students. The course involves both lectures and viewing cadaver prosections in a laboratory setting. Anatomical concepts are presented in a regional format in lecture followed by viewing specifically, prepared anatomical prosections of the same regions in lab.

**Prerequisite(s):** Admission to the College of Dentistry or some background in biology and consent of instructor.

### **CDE COMMUNITY DENTISTRY**

#### **CDE 814 Patients, Dentists and Society I (1)**

This course aims to orient the student to the place health and health professions play in modern cultures. Recognition of their own social assumptions and values and those of persons of different backgrounds is encouraged. Understanding, predicting, and changing dental patient behavior from a social standpoint is emphasized.

#### **CDE 815 Fundamentals of Dental Public Health (2)**

Fundamentals of Dental Public Health is a first-year course designed to introduce student dentists to the dental specialty of Dental Public Health, to dental epidemiological concepts, terminology, and methods used in population-based health care. Community oral health problems in Kentucky and the United States will be reviewed. Emphasis will be placed on public health research, programming, and outcome evaluation strategies related to oral disease in populations.

#### **CDE 824 Communication in the Dental Health Care Setting (1)**

This course aims to improve the student's ability to communicate with patients and the public in an empathetic and professional manner. Methods of obtaining necessary health information from all types of patients are taught.

**Prerequisite(s):** Second year standing in the College of Dentistry.

#### **CDE 826 Dental Practice Management I (1)**

This course is designed to present a range of dental practice models and introduce several

elements of Practice Management. Students will become acquainted with concepts such as business plans, billing, collections, and risk management, and will have the opportunity to engage in guest lectures from outside experts in a range of legal and business fields.

### **CDE 830 Advanced Concepts in Dental Public Health (1)**

Advanced Concepts in Dental Public Health is a third-year course designed to help students develop the perspective and sensitivities of dentists practicing in the community. It examines the external environment and various factors that influence the oral health of the community including barriers to care. Financing mechanisms and workforce issues will be discussed. To provide a framework for the dental student's professional development, the instructional content builds on the concepts acquired in the first-year introductory course in dental public health and presents concepts that will help the student dentist prepare for the Community-Based Dental Education Program. (CDE 841). Course material is organized around current societal and dental health issues and health care delivery system trends in Kentucky and the United States. These issues and trends will be examined in the context of current national debates concerning access to oral health prevention and care for high-risk populations and the associated health disparities to these populations.

**Prerequisite(s):** Admission to the College of Dentistry or consent of course director.

### **CDE 841 Dental Practice Field Experience (6)**

Students are provided a full-time, off-campus assignment to a dental practice environment for a period of 4 weeks. Students spend an average of 40 hours each week participating in practice management and patient treatment activities under the supervision of a dentist. Approximately eight hours a week are spent in career plan development and in study of the community or region, particularly its health care delivery system and the role of dentistry in that system. This community-based dental education course consists of clinical, public health, and managerial experiences.

**Prerequisite(s):** CDE 830, at least 15 restorative procedures in RSD 831, END 831, and at least 10 extractions in OSG 831.

### **CDE 844 Dental Practice Management II (2)**

This course is primarily designed to give the student dentists, prior to graduation, practical, useful knowledge on establishing and maintaining a private dental practice. The course will be presented in an active learning format. Course sessions and activities will also include special sessions designed to introduce students to the current environment of dental practice, to organized dentistry in Kentucky, to the College's Alumni Association and to new developments and continuing education in the dental profession.

**Prerequisite(s):** CDE 830 or consent of course director.

### **CDE 850 Extramural Experiences for Student Dentists (Elective) (1-6)**

This course is designed to provide student dentists an experiential learning experience in a research program, clinical program, public health program and/or institutional dental program. Career planning and service-learning are emphasized and coordinated with placement in a community-based site. Students learn by active participation in patient care and/or research, by observation and by discussion with mentors. Discussions and interviews



with patients and dental residents and staff are also encouraged. This course provides an opportunity for selected students, based on their own career goals, to participate in short-term elective dental educational experience external to the student dentist clinics. While the sites vary greatly, most experiences include some patient care experiences (observation, assisting, direct participation in patient care under the direct supervision of an approved mentor). Extramural experiences are customized for each student dentist.

**Prerequisite(s):** Consent of Course Director, Academic Performance Committee (APC), and Team Leader. Fourth year students do NOT need APC approval

### **CDE 855 Public Health Dentistry Field Experience (1)**

This course allows implementation of oral health promotion programs designed in CDE 830 in community settings.

**Prerequisite(s):** Must be fourth year dental student.

### **CDE 882 Advanced Course on the Treatment of Special Patients (Elective) (1)**

In this course, dental students participate in preclinical seminars and dental treatment of mentally, medically, and physically handicapped patients. Several phases of dental treatment of the special patient, such as sedation and general anesthesia, pharmacological evaluation, and preventive dentistry, are covered. The course is individually designed based on the students' interest in treated compromised patients. Note: Scheduling for this course will take place outside of regularly scheduled clinical/class time. Enrollment minimum is one and maximum enrollment is four.

**Prerequisite(s):** Fourth year standing, consent of Course Director, Academic Performance Committee (APC), and Team Leader.

### **CDE 883 Community-Based Service Elective (1-5)**

This Community-Based Service elective is designed to give students greater opportunities to provide dental services to diverse, underserved populations. The goals of this course are to expand development of a service ethic and to meet some of the needs of populations who do not have access to dental care. Many of the time requirements for this course will be rotations to community clinics where students will work under the supervision of a College of Dentistry faculty providing dental services. Individual contracts will be developed with participating students to determine credit hours. In addition, there will be 2 one-hour seminars to discuss and debrief on the experiences of participating students.

**Prerequisite(s):** Completion of year two dental school curriculum and/or approval of College of Dentistry APC.

### **CDE 884 International Elective (1-3)**

This community-based service-learning elective is designed to afford students greater opportunities to provide a broad spectrum of dental educational, clinical, and public health services to diverse, underserved populations in an international setting. Most of the time requirements for this course will be in a foreign country at designated community sites potentially working with other health care professionals. Activities will include but are not limited to assessing both community and patient needs and providing services based on the need's assessment and community goals. Students will work with UK approved organizations

and under the direct supervision of a College of Dentistry faculty while in-country. 1-3 credit hours; repeatable for up to 3 credit hours; allows multiple bookings per semester.

**Prerequisite(s):** Admission to College of Dentistry.

## **CDS CONJOINT DENTAL SCIENCES**

### **CDS 812 Normal Human Growth and Development (1)**

This is a lecture course which introduces basic concepts of normal human growth and development from birth through adolescence. Lectures emphasize the time-dependent changes that normally occur during physical and psychological maturation. A special emphasis is directed toward basic knowledge and understanding of craniofacial growth and development of the teeth and occlusion.

**Prerequisite(s):** Admission to the College of Dentistry or consent of course director.

### **CDS 813 Management I: Intro to Management for the Dentist (1)**

CDS 813 is the first in a series of conjoint courses to improve the management of patients by student dentists. The course is co-directed by the patient care Team Leaders. Special didactic and clinical activities are included to provide the student with an introduction to clinical protocol and to the fundamentals of patient management. The course spans both semesters of the academic year and includes all clinical activities and interactions with Team Leaders.

Lecture Hours: 1 Clinic Hours: 27

**Prerequisite(s):** Admission to the College of Dentistry.

### **CDS 815 Introduction to Clinical Dentistry (2)**

This survey course presents an introduction to the dental field of operation (operatory), basic assisting procedures, preventive dentistry, infection control, application of sealants and oral isolation techniques. It is designed to prepare students to function in dental environments, safely and efficiently and to prepare them for the school-based sealant experience offered in CDE 815, Fundamentals of Dental Public Health.

**Prerequisite(s):** Admission to the College of Dentistry or consent of the course director.

### **CDS 818 The Profession of Dentistry I (1)**

This course is an introduction to life in the profession of dentistry. The course will explore normal everyday morality and consider whether a case can be made for an extraordinary morality or ethic for practitioners. The course will conclude with a brief review of the history of dentistry to enable the student to place the profession of dentistry in cultural and historical perspective.

**Prerequisite:** Approval of the Dean and or his designee for Academic Affairs and the Course Director

### **CDS 819 Special Topics in Dentistry I (1)**

This course is the first year of the two-year longitudinal core curriculum in Interprofessional Healthcare Education. The purpose of this first-year course is to present current information on a wide variety of topics ranging from interprofessional collaborative care, culture and society,

minority health issues, gender and age as factors in health care, alcohol and substance abuse, evidence-based practice and decision-making, the connection between a healthy work-life balance and being a successful practitioner, and the use of mindful meditation practices for maintaining a work-life balance, along with other subjects of relevance to students enrolled in the dental curriculum. In some cases, the course content applies directly to didactic and clinical courses in the curriculum. At other times, the material is intended to help students increase their success in the curriculum and become better caregivers. Seminar, 20 hours.

**Prerequisite(s):** First year standing.

### **CDS 821 Local Anesthesia (1)**

The action and dosage of local anesthetic agents used in dentistry are taught as are the proper injection techniques. The technique of venipuncture and administration of intravenous drugs are also included. Patient evaluation and emergency techniques for cardiac and respiratory resuscitation are reviewed.

**Prerequisite(s):** ANA 534

### **CDS 823 Management II: Clinical Patient Management (1)**

CDS 823 is the second in a series of conjoint courses designed to improve the management of patients by student dentists. The course is directed by the patient care Team Leaders with other faculty. Special didactic and clinical activities are included to improve and maintain the students' ability to manage patients safely and efficiently. One of the primary goals of this course is to improve students' ability to interact with patients in an empathetic and professional manner. The course spans both semesters of the academic year and includes all clinical activities and interactions with Team Leaders. Lecture 7 hours, Clinic 3 hours, Seminar 16 hours.

**Prerequisite(s):** CDS 813 or consent of course director.

### **CDS 824 Oral Diagnosis and Treatment Planning (1)**

The purpose of this course is to prepare the student for clinical dentistry by presenting techniques of examination and diagnostic procedures that ultimately lead to diagnosis and treatment planning.

**Prerequisite(s):** ODM 814 or consent of course director.

### **CDS 825 Dental Implantology (2)**

Dental Implantology has become an integral part of dental services. This course contains information on patient centered criteria for implant services, surgical considerations, and prosthetically driven treatment results. The student will have the opportunity to familiarize him/herself with the components used in providing such treatment through a hands-on laboratory session and using digital dentistry in the diagnosis and treatment planning for single implant crown and implant retained overdenture.

**Prerequisite(s):** Admission to College of Dentistry or discretion of course director.

### **CDS 831 Conscious Sedation (1)**

This course is designed to teach and prepare the student dentist the principles of nitrous oxide-oxygen inhalation sedation and intravenous sedation in dentistry including a clinical

training on venipuncture and intravenous drugs administration techniques. The management of emergencies associated with these techniques and an introduction to the principles of general anesthesia are also included.

**Prerequisite(s):** CDS 821

**CDS 833 Management III: Clinical Patient Management (1)**

CDS 833 is the third in a series of conjoint courses to improve the management of patients by student dentists. The course is directed by the patient care Team Leaders. Special didactic and clinical activities are included to improve and maintain the student dentist's ability to manage patients and provide care. The course spans both semesters of the academic year and includes all clinical activities and interactions with Team Leaders.

**Prerequisite(s):** CDS 823

**CDS 835 Advanced Dental Implantology (1)**

Dental implantology has become an integral part of dental services. This course contains information on patient centered criteria for implant services, surgical considerations, and prosthetically driven treatment results. Additional topics include treatment planning for complex dental implant cases, mechanical and restorative complication related to implant dentistry, esthetic considerations for implant restorations, immediate implant placement and immediate provisionalization, and immediate/early loading protocols will be discussed. The student will have the opportunity to familiarize him/herself with multiple implant systems and multiple implant placement protocols. The student will have the opportunity to review literatures and provide summary and critique on most current surgical and restorative techniques and products.

**Prerequisite(s):** CDS 825

**CDS 836 Diagnosis and Management of Orofacial Pain (3)**

This course will present information regarding the diagnosis and management of Orofacial Pain and Temporomandibular Disorders. The course will consist of lectures and case presentations. The information provided in this course will allow the student to understand the dentist's role in managing complex orofacial pain problems. The area of temporomandibular disorders will be emphasized since the dentist plays a major role in managing these pain disorders.

**Prerequisite(s):** ANA 534, OSG 820, and RSD 822

**CDS 843 Management IV: Clinical Patient Management (1)**

CDS 843 is the fourth in a series of conjoint courses to improve the management of patients by student dentists. The course is directed by the patient care Team Leaders. Special didactic and clinical activities are also included to improve and maintain your ability to manage patients. The course spans both semesters of the academic year, including all clinical activities and interactions with Team Leaders.

**Prerequisite(s):** CDS 833 or consent of course director.

**CDS 860 Special Topics in Oral Health (Elective) (1-3)**

This course will engage students in a variety of activities including lectures, independent literature review and reading community-based projects, and individual or small group discussions to address current topics of special interest or concern in oral health. Projects and

discussion areas for students participating in an interdisciplinary colloquium will be developed in conjunction with other health care providers.

**Prerequisite(s):** Enrollment in the College of Dentistry; approval of the course director.

### **CDS 866 Research Elective Course (Elective) (1-5)**

This course will give DMD students experience in research design and methods, including laboratory and clinical methods of research and learning the importance of clinical translational research for the practice of Dentistry. Students will have a variety of research lectures and experiences throughout the curriculum and will be working towards selecting a mentor to work during this program. Additionally, this program will also increase the exposure of UKCD students within the research community within and outside UKCD. This course is divided into 4 different sections with some overlapping activities. Student may register for different sections of the course by the fall of each academic year, provided that meet the pre-requisites.

**Prerequisites:** Students need to have a minimum GPA (3.2) in order to qualify for this elective. The student list will be reviewed by the course director. Co-req: Students accepted in this course must maintain a strong GPA (min 3.2) in order to be maintained in the course, and register for the different sections, as determined by the Research and Academic Performance Committees. Student would also not be accepted into the program if on academic probation. Students will be withdrawn if put on probation.

### **CDS 885 Advanced Digital Implant Dentistry (Elective) (1)**

Digital Dentistry has become an integral part of dental services. This course will serve as clinical application of advanced surgical procedures and advanced prosthetically driven treatment concepts. The main objective of this course is to focus on the practical component and hands on training with virtual treatment planning for simple and complex dental implant cases, provisional implant restorations, immediate implant placement, and various surgical techniques related to implant dentistry. The student will have the opportunity to explore hands on experience on multiple implant systems and multiple implant placement protocols based on theoretical information learned from CDS 825 & CDS 835

**Prerequisite(s):** CDS 825 and CDS 835

## **END ENDODONTICS**

### **END 824 Principles of Endodontics (1)**

This is an online course designed to introduce the student to the practice and scope of endodontics. It will prepare the student to recognize, understand, diagnose and successfully treat diseases and injuries of the pulp and periradicular tissues.

### **END 826 Preclinical Endodontics (2)**

This is a laboratory instructional course designed to provide the student with the basic techniques involved in endodontic treatment of anterior and posterior teeth.

**Prerequisite(s):** END 824, RSD 812 and RSD 814, or consent of course director.

### **END 830 Endodontics II (1)**

This course concerns the diagnosis and treatment of endodontically related problems. Traumatic injuries, controversies in instrumentation and filling procedures, periodontic-endodontic

consideration, surgical endodontics and other selected topics are discussed in depth.

**Prerequisite(s):** END 824 and END 826

**END 831 Clinical Endodontics II (1)**

In this course students will treat routine endodontic cases.

**Prerequisite(s):** END 824 and END 826.

**END 841 Clinical Endodontics III (1)**

This course offers dental students further experience in providing endodontic treatment.

**Prerequisite(s):** END 831 or consent of a course director.

**END 880 Clinical Endodontics Seminar (Elective) (1)**

This course is designed to give a more in-depth hands-on view of some of the newest concepts in endodontics. Seminars will be presented including new concepts of instrumentation and root canal obturation. Demonstrations and hands on class participation will supplement the seminars. Note: scheduling for this course will take place outside of regularly scheduled class/clinic time.

**Prerequisite(s):** END 830, END 831, ranked in the upper half of the class, and consent of instructor.

**OBI ORAL BIOLOGY**

**OBI 812 Dental Biochemistry (5)**

This is a comprehensive course in biochemistry designed to fulfill the specific needs of student dentists. Course content is generally as outlined in the American Association of Dental Schools suggested curriculum guidelines for biochemistry. Part I acquaints students with the chemical constituents of prokaryotic and eukaryotic cells; topics include the chemistry of lipids, carbohydrates, proteins, vitamins and coenzymes, and the nature of enzyme action. Part II integrates the chemical principles learned from Part I with concepts of cell dynamics, structure, function, subcellular organization, and metabolism. Topics include intermediary metabolism, bioenergetics, DNA replication, protein synthesis, and cellular regulatory and control mechanisms. Course content, where possible, is related to current concepts concerning the etiology of oral diseases, their treatment, and prevention to assist student dentists in attaining institutional goals and objectives for clinical competency.

**Prerequisite(s):** Admission into the College of Dentistry and/or consent of course director.

**OBI 814 Human Function (5)**

This course provides in-depth instruction to the physiological mechanisms of body function from the single cell to the organism level. The course is team taught primarily by basic scientists. Teaching methodologies include didactic and Socratic lectures with some dental correlations.

**Prerequisite(s):** Admission to the College of Dentistry.

**OBI 828 Immunity, Infection and Disease for the Student Dentist (5)**

The course provides basic concepts of immunology and bacterial, viral, fungal and protozoal biology. It

focuses on mechanisms of human immunity, immunologically mediated disease, and pathogenesis in infectious disease. The material covered includes relevant pathology associated with both immunologic and infectious diseases, and a summary of infectious diseases from a clinical perspective.

**Prerequisite(s):** Enrolled in the DMD curriculum.

### **OBI 836 Dental Pharmacology (3)**

This course will provide students of dentistry with a fundamental understanding of the pharmacology and the therapeutic uses of drugs commonly used in their practice or by their patients. This course will reinforce topics discussed in CDS 821 (Local Anesthesia); in addition, the course will integrate with ODM 830 (Mgmt. of Med Compromised Patient) and provide focused preparation for CDS 831 (Conscious Sedation).

**Prerequisite(s):** OBI 812 (Dent Biochem), OBI 814 (Dent Physio), and CDS 821 (Local Anes).

## **ODM ORAL DIAGNOSIS AND ORAL MEDICINE**

### **ODM 810 Basic Principles in Oral and Maxillofacial Radiology (2)**

This course presents basic principles of oral and maxillofacial radiology, including radiation biology, radiation physics and Imaging Principles, radiation protection and safety, and radiology techniques. Lecture, 20 hours; seminar, 4.5 hours.

**Prerequisite(s):** Admission to the College of Dentistry

### **ODM 814 Oral Diagnosis/Oral Medicine & Treatment Planning (2)**

This course is designed to prepare the student dentists to do overall patient evaluation which would include medical history, dental history, social history, family history. Students will be provided information that leads to an understanding of the significance of a proper head and neck examination, intraoral, examination and oral cancer screening. Teachings and learning resources will introduce students to an initial understanding of the different needs and modifications required for certain patient population (pediatric, geriatrics, special needs and medically complex patients). This course will consist of lectures, simulated case presentations, hands on clinical examination training in groups, self-practice time, and handouts.

**Prerequisite(s):** 1st Year University of Kentucky, College of Dentistry student.

### **ODM 820 Oral and Maxillofacial Radiology and Diagnostic Imaging (2)**

This course presents the principles of radiographic anatomy, extra-oral projections (including panoramic film and lateral skull film), radiology of caries and periodontal disease, digital radiology, advanced imaging techniques (including CBCT), and the process of radiographic interpretation.

**Prerequisite(s):** ODM 810.

### **ODM 821 Clinical Oral Diagnosis I (1)**

This course consists of two components: 1) examination, diagnosis, and treatment planning for patients assigned to dental students in general clinics; and 2) emergency clinic assignments in which the students will diagnose and treat patients with acute oral problems. Clinic, 30

hours.

**Prerequisite(s):** CDS 815; **Corequisite(s):** CDS 824

### **ODM 830 Management of the Medically Compromised Dental Patient (3)**

This course will provide students with the knowledge required to manage medically compromised patients in the outpatient dental office. Basic clinicopathological information about commonly occurring medical disorders, the impact medications that these patients take have, the special problems they have, and their effects on dental health care will be presented. Critical thinking is encouraged so that the students can use their diagnostic skills in the appropriate manner to identify and manage patients with systemic disorders. Lecture, 43 hours; laboratory 4 hours.

**Prerequisite(s):** Approval of dean and/or his designee for academic affairs and the course director.

### **ODM 831 Clinical Oral Diagnosis II (2)**

This course is a continuation of ODM 821 and also consists of two components: 1) examination, diagnosis and treatment planning for patients assigned to dental students in general clinics; and 2) emergency clinic assignments in which the students will diagnose and treat patients with acute oral problems. Clinic, 77 hours.

**Prerequisite(s):** ODM 821; **Requisite(s):** ODM 830

### **ODM 841 Clinical Oral Diagnosis III (1)**

This course is a continuation of ODM 831 and also consists of two components: (1) examination, diagnosis and treatment planning for patients assigned to dental students in general clinics; and (2) emergency clinic assignments in which the students will diagnose and treat patients with acute oral problems. Clinic, 40 hours.

**Prerequisite(s):** ODM 830 and ODM 831.

## **OHP ORAL HEALTH PRACTICE**

### **OHP 850 Independent Work in Oral Health Practice (Elective) (1-3)**

An elective course offered by the department of Oral Health Practice. Students may work on individual projects in one or more of the disciplines encompassed by this department under the direction of a faculty member.

**Prerequisite(s):** Specific course prerequisites and year in dental school will depend on the nature of the proposed project; consent of instructor.

## **OHS ORAL HEALTH SCIENCE**

### **OHS 850 Independent Work in Oral Health Science (Elective) (1-3)**

An independent research course offered by the department of Oral Health Science. Students may work on individual projects in one or more of the disciplines encompassed by this department under the direction of a faculty member. The work should involve independent laboratory or clinical research and include supporting literature searches. The end result



should be either a table clinic presentation or a paper suitable for publication. The minimum number of hours to be spent on the project and the means of evaluation will be decided before beginning the project. May be repeated to a maximum of 12 credits.

**Prerequisite(s):** Specific course prerequisites and year in dental school will depend on the nature of the proposed project; consent of instructor.

## **OPT ORAL PATHOLOGY**

### **OPT 820 General Pathology for Student Dentists (3)**

This basic course covers general pathology, which will prepare the student dentist to concentrate on the specialized area of oral pathology. Emphasis is placed on cell damage, inflammation and repair, neoplasia and hemostasis, as well as the in-depth study of selected systemic diseases that may affect dental patient management.

**Prerequisite(s):** Enrollment in the College of Dentistry and second year class standing, ANA 530, ANA 534, or consent of course director.

### **OPT 830 Oral Pathology I (3)**

Change from 4 one-hour examination to 5 one-hour examinations.

**Prerequisite(s):** OPT 820

### **OPT 832 Oral Pathology II (1)**

This course teaches the dental student an effective approach to patients with oral lesions. It will stress the following: development of a reasonable differential diagnosis list, procedures to be used in obtaining a definitive diagnosis, management of the patient after a diagnosis has been made, and treatment if indicated. Lecture/seminar, 26 hours and 1 two-hour final exam.

**Prerequisite(s):** OPT 830

### **OPT 840 Oral Pathology III (1)**

This is an advanced course in oral pathology in which various diseases and abnormal conditions of the head, neck, and oral cavity are presented. The pertinent information on several selected cases will be available online and posted in display case for a week. Subsequently, an associated seminar will concentrate on the development of a differential diagnosis, establishment of a definitive diagnosis, and discussion of treatment and prognosis. Seminar, 19 hours and 1-2 hour exam.

**Prerequisite(s):** Successful completion of OPT 832 or discretion of the course director.

### **OPT 850 Oral Pathology (Elective) (1-10)**

Elective courses offered by the Department of Oral Pathology provide opportunities for further study of or experience in various aspects of oral pathology. Topics may include principles of clinical and histologic diagnosis, the management of patients with oral disease, and discussions of specific oral diseases. Hours variable from a minimum of 16 hours lecture/discussion to a maximum of 10 weeks clinical experience.

**Prerequisite(s):** Minimum year in dental school and any course prerequisites will be announced for each topic.

## **ORT ORTHODONTICS**

### **ORT 822 Orthodontics (3)**

This is a lecture and laboratory course in which the knowledge and skills needed to conduct a thorough orthodontic diagnosis and to plan orthodontic therapy are developed. In addition, the principles of orthodontic mechanotherapy are introduced and the role the general dentist plays in maintaining healthy occlusion is defined. Early lectures are oriented to data base collection, analysis and interpretation. The course provides opportunity to develop skills in analysis of facial proportions, analysis of diagnostic dental casts, cephalometric tracings, formulating a prioritized problem list, and development of long term and short-term treatment goals. As the semester progresses, focus shifts to give the student a basic understanding of the skills required to fabricate fixed and removable appliances that are typically indicated for limited tooth movement and retention in interceptive orthodontics and adjunctive orthodontic treatment in a general practice setting. The role of the general dentist in the management of their patients' orthodontic needs will be delineated. Special emphasis will be placed on coordination of treatment between the specialist and general practitioner and maintenance of occlusion over the life span of the patient. The role of orthodontic treatment in a multidisciplinary approach will be discussed. Finally, new technology emerging on the horizon in clinical orthodontics will be explored. Lecture, 32 hours; laboratory, 3 hours; seminar, 4 hours.

**Prerequisite(s):** Students must have second year standing in the College of Dentistry and have passed CDS 812. Otherwise, special permission of the course director is required.

### **ORT 841 Clinical Orthodontics (1)**

This clinical course requires the students to analyze and diagnose the present and developing occlusal disharmonies in their assigned patients and to provide therapy for those patients who need tooth movements judged to be within the scope of the general practice of dentistry. Clinic, 50 hours.

**Prerequisite(s):** ORT 822 and consent of course director.

### **ORT 850 Orthodontic Elective (Elective) (1-10)**

Elective courses offered by the Department of Orthodontics provide opportunities for further study of or experience in various aspects of orthodontics. Topics may include principles of comprehensive orthodontic treatment, types of orthodontic appliances, and methods of correcting facial skeletal problems. Hours variable, ranging from a minimum of 16 hours lecture/discussion to a maximum of 10 weeks clinical experience. May be repeated to a maximum of 10 credits.

**Prerequisite(s):** Minimum year in dental school and any course prerequisites will be announced for each topic.

## **OSG ORAL AND MAXILLOFACIAL SURGERY**

### **OSG 820 Oral Surgery I (1)**

This course is designed to introduce the student to principles of surgery and to prepare them for

their clinical rotations. Emphasis is placed not only on the technical aspects of surgery, but also on the integration of basic sciences to form a scientific basis for the clinical practice of surgery.

### **OSG 830 Oral Surgery II (1)**

This course is an overview of the specialty of oral surgery. The student is introduced to the surgical management of congenital and acquired abnormalities of the oral structures and associated parts. Management of odontogenic infection, cysts and tumors is presented, as well as the role of the dentist in the care of head and neck cancer patients. The diagnosis and management of facial fractures also are presented, particularly as they relate to the general practitioner. Lecture, 25 hours.

**Prerequisite(s):** OSG 820 or consent of course director.

### **OSG 831 Oral Surgery Rotation I (1)**

This course teaches the management of the ambulatory oral surgical patient. It includes patient evaluation, control of pain and anxiety, performance of minor oral surgical procedures, treatment of acute and chronic oral infections and of complications associated with oral surgery, and the use of the problem-oriented record. Slide-text programs and reading assignments supplement the outpatient clinical experience. Clinic 48 hours.

**Prerequisite(s):** CDS 821 and OSG 820, or consent of course director.

### **OSG 841 Oral Surgery Rotation II (1)**

In this course students learn the management of oral surgical patients in a hospital. It consists of a full-time rotation on the oral surgery hospital service, including standing in-hospital night call with the oral surgery house staff. Students assist in patient care and perform procedures such as exodontia and biopsy. Oral surgical management of comprehensive care patients in the outpatient clinic is also included.

**Prerequisite(s):** OSG 830 and OSG 831

### **OSG 850 Oral Surgery (Elective) (1-10)**

Oral Surgery provide opportunities for further study of or experience in various aspects of oral surgery. Topics may include hospitalized and ambulatory patient management, emergency care, operating room experience, pain and anxiety control, and surgical technique. Hours variable, ranging from a minimum of 16 hours lecture/discussion to a maximum of 10 weeks clinical experience. May be repeated to a maximum of 10 credits.

**Prerequisite(s):** Minimum year in dental school and any course prerequisites will be announced for each topic.

## **PDO PEDIATRIC DENTISTRY**

### **PDO 822 Pediatric Dentistry I (2)**

In this course in dentistry for children, emphasis will be placed on principles of oral surgical procedures, advanced restorative techniques, diagnosis and treatment of traumatic injuries, preventive dentistry and diagnosis and treatment of oral habits and cosmetic dentistry. Lecture, 26 hours; laboratory, 6 hours.

**Prerequisite(s):** Second year standing in the College of Dentistry.

**PDO 831 Clinical Pediatric Dentistry I (1)**

An introductory clinical course instructing student dentists in oral health care for children. Lecture 4 hours; Clinic 16 hours; Lab 16 hours.

**Prerequisite(s):** PDO 822; **Co-Requisite(s):** PDO 834

**PDO 834 Pediatric Dentistry II (2)**

This course is designed to introduce basic modern concepts in dentistry for children. Emphasis is placed on principles of child behavior management and basic restorative dentistry techniques. Lecture: 32 hours

**Prerequisite(s):** PDO 822

**PDO 841 Clinical Pediatric Dentistry II (2)**

An advanced clinical course instructing student dentists in oral health care for children. This course will consist of a clinical rotation in pediatric dental offices. Students will shadow the attending specialist and assist with procedures once they and the attending faculty feel comfortable. Knowledge gained in Pediatric Dentistry I (PDO 822) and Pediatric Dentistry II (PDO 834) is applied in this portion of the course.

**Prerequisite(s):** PDO 822, PDO 834, and PDO 831

**PDO 850 Pediatric Dentistry (Elective) (1-10)**

Pediatric Dentistry provide opportunities for further study of or experience in various aspects of pediatric dentistry. Topics may include management of children with developmental/medical conditions in a hospital, dental treatment of handicapped children and of normal children and adolescents, and further discussion of treatment techniques. Hours variable, ranging from a minimum of 16 hours lecture/discussion to a maximum of 10 weeks clinical experience. May be repeated to a maximum of 10 credits.

**Prerequisite(s):** Minimum year in dental school and any course prerequisites will be announced for each topic.

**PER PERIODONTICS****PER 810 Periodontics (3)**

This course presents the components of periodontal diagnosis, treatment planning and therapy. Emphasis is on diagnosis, prognosis, treatment planning and non-surgical treatment of periodontally involved patient. Involves 34 lecture hours and 26 laboratory hours.

**PER 821 Clinical Periodontics II (2)**

This is a course designed to provide the student with clinical experience so that she/he can obtain a minimal competence in the applications of periodontal procedures. Therapeutic procedures involving initial periodontal therapy will be performed by each student.

**Prerequisite(s):** PER 810 or consent of course director.

**PER 830 Periodontics III (2)**

This is a surgically oriented course which presents information necessary for the diagnosis, treatment planning and treatment of surgical cases.

**Prerequisite(s):** PER 820 or consent of course director.

**PER 831 Clinical Periodontics III (2)**

This is a clinical course which offers the student the opportunity to treat patients with more advanced periodontal disease. Therapeutic procedures will be performed by each student as his patients' needs dictate. Clinic, 50 hours

**Prerequisite(s):** PER 821; **Co-requisite(s):** PER 830 or consent of instructor.

**PER 841 Clinical Periodontics IV (4)**

This clinical course is a continuation of PER 831. The student receives further instruction and experience in diagnosing, planning treatment and treating patients with periodontitis and mucogingival problems.

**Prerequisite(s):** PER 830 and PER 831, or consent of instructor.

**PRO PROSTHODONTICS****PRO 820 Preclinical Complete Denture Prosthodontics (Lecture) (2)**

This didactic course provides an introduction to basic concepts of diagnosis and treatment planning, placement and maintenance of complete dentures, as well as the related biological and mechanical factors that must be incorporated for living tissue to be compatible with complete dentures.

**Prerequisite(s):** Advancement to second year standing or consent of course director.

**Corequisite(s):** PRO 822

**PRO 821 Clinical Complete Denture Prosthodontics (1)**

The treatment of a patient with complete maxillary and mandibular denture needs is performed in the clinic by the student. The student will assist an upper level student in the examination of a complete denture and a removable partial denture recall patient. Clinic, 52 hours

**Prerequisite(s):** PRO 820.

**PRO 822 Preclinical Complete Denture Prosthodontics (Lab) (3)**

This preclinical laboratory course provides an introduction to basic concepts of fabrication of complete dentures as well as the related biological and mechanical factors that must be incorporated for living tissue to be compatible with complete dentures.

**Prerequisite(s):** Advancement to second year standing or consent of course director.

**Corequisite(s):** PRO 820.

**PRO 824 Removable Partial Dentures (2)**

This course is designed to teach the student the basic principles and the practical procedures in providing a therapeutic and functional removable restoration. The course also presents the laws and effects of leverages as related to removable partial dentures as well as the considerations

for support, occlusion, and health of all oral structures.

**Prerequisite(s):** PRO 820.

**PRO 831 Clinical Removable Prosthodontics (2)**

A patient with complete denture needs is treated by the student clinically in the course. The student may opt to treat a patient with immediate, intermediate or overdenture needs. He may initiate and/or complete the treatment of two patients with removable partial denture needs. The student may also treat an optional, additional patient in need of a complete or removable partial denture. The student will recall a minimum of two removable prosthodontic patients and perform any treatment necessary for these patients. Clinic, 110 hours.

**Prerequisite(s):** PRO 820, PRO 821, PRO 822, PRO 824 or consent of course director.

**PRO 834 Preclinical Restorative Dentistry III (4)**

This is a preclinical course with emphasis on dental hard tissue surgery and restorative procedures for anterior and posterior fixed prosthodontics. Contemporary principles of fixed prosthodontics, including the long-term maintenance of dental health, are presented in lectures and applied in practice using manikins. Knowledge gained in previous restorative dentistry courses are applied to more extensive restorations. Lecture, 24 hours; laboratory, 84 hours.

**Prerequisite(s):** RSD 822, RSD 823, RSD 824, RSD 825 and RSD 826.

**PRO 836 Advanced Fixed Prosthodontics and Treatment Planning (2)**

This course is a lecture series concerning diagnosis and treatment planning for fixed prosthodontics care and the principles of providing that care. The relationship of tooth restoration and replacements to occlusion, periodontics, orthodontics and removable prosthodontics in both treatment planning and treatment is emphasized. Lecture, 30 hours

**Prerequisite(s):** PRO 824, PRO 834, CDS 835 and/or consent of course director.

**PRO 841 Advanced Clinical Removable Prosthodontics (2)**

This course covers basically the same area as PRO 831 with the exception that the student is to treat the patient with complete denture needs with less supervision from the instructors. If not done previously, the student must initiate and complete the treatment of two patients with removable partial denture needs. The student will recall three removable prosthodontic patients and will perform any treatment necessary for these patients. Clinic 114 hours

**Prerequisite(s):** PRO 831.

**RSD RESTORATIVE DENTISTRY**

**RSD 810 Foundations in Operative Dentistry I (3)**

This lecture/preclinical course in operative dentistry is designed to provide a beginning student with basic knowledge and basic hand skills for operative dentistry involving tooth preparation and restorative techniques for direct restorative materials. This course is directed at preparing the student with knowledge and skills in the diagnosis and treatment of carious lesions necessary for patient care in operative dentistry.

**Corequisite(s):** RSD 811, RSD 812.

**RSD 811 Principles of Dental Anatomy, Morphology & Occlusion (3)**

This introductory lecture course is designed to provide the dental student with necessary knowledge of dental anatomy, dental morphology and basic dental occlusion for all succeeding courses in preclinical and clinical dentistry. This includes a detailed description and study of individual teeth, relationship of dentoform and function, mandibular movement and introduction to muscles of mastication. Lectures related to biomaterials are added as needed.

**Prerequisite(s):** Admission to the college or consent of the course director; **Corequisite(s):** RSD 812.

**RSD 812 Principles of Dental Anatomy, Morphology & Occlusion Laboratory (3)**

This introductory laboratory course is designed to provide the beginning dental student with skills manipulating wax to successfully replicate the dental anatomy of individual teeth as well as learning the relationships of form and function within the context of mandibular movement. These skills are learned by use of the dentoform as well as dental articulator. Laboratory experiences relating to dental biomaterials are introduced as needed.

**Prerequisite(s):** Admission to the college or consent of the course director; **Corequisite(s):** RSD 811.

**RSD 813 Dental Cariology (1)**

This course is designed to review the biological basis for the concepts and treatment procedures of dental caries as an infectious disease and will provide didactic foundational knowledge for the clinical management of dental caries.

**RSD 814 Foundations in Operative Dentistry II (3)**

This lecture/preclinical course in operative dentistry is a continuation of RSD 810 and is designed to provide students with additional knowledge and hand skills for operative dentistry. This course is designed to continue educating the student regarding the diagnosis and treatment planning of oral health conditions. This course will teach the student additional tooth preparations and restorations and will expand upon restorative material choices for operative dentistry. **Prerequisite(s):** RSD 810, RSD 811/812

**RSD 821 Clinical Restorative Dentistry I (3)**

This course emphasizes clinical application of the principles taught in preclinical courses. Concepts of diagnostic and therapeutic procedures as well as preventive measures are applied in the clinic with emphasis on the demonstration of competency in rendering primary care type treatment procedures.

**Prerequisite(s):** RSD 814; Corequisite RSD 824.

**RSD 822 Principles of Dental Occlusion and Articulation (3)**

This course is directed toward the examination, diagnosis, treatment planning, and treatment of various occlusal problems. The student will learn the skills needed to analyze the dental occlusion of patients and to plan successful occlusal therapy including restorative procedures and fixed prosthodontic treatment. The course will concentrate on developing technical skills and learning assessment criteria related to mounted study casts, occlusal examination and analysis, selective occlusal adjustment, diagnostic pre-waxing and planning, and the fabrication of a muscle relaxation occlusal splint.

**Prerequisite(s):** CDS 815, RSD 812, or with approval of the course director.

**RSD 823 Restorative Dentistry II (1)**

This didactic course places an emphasis on the basic knowledge required for treatment planning, tooth preparation and the fabrication of indirect single unit dental restorations. This course also introduces and reinforces concepts in dental material sciences pertinent to the selection of an appropriate restorative material, and the correct handling of dental stones, dental investments, dental alloys and luting agents for dental restorations.

**Prerequisite(s):** RSD 810, RSD 812, RSD 814, or consent of instructor.

**RSD 824 Preclinical Restorative Dentistry II (2)**

This preclinical course places an emphasis on preparing teeth and fabricating provisional restorations to restore them to their biologically correct form and function. Tooth preparations and fabrication of provisional extra-coronal restorations are performed on dental manikins. This course also introduces the student dentist to the process of fabricating a final extra-coronal restoration from impression through cementation. The restorations emphasized in this course are single unit posterior crowns. The science of dental materials and the correct usage of dental investments, alloys, provisional materials and cements is emphasized. Previously gained knowledge in the areas of dental morphology and occlusion is applied in this course.

**Prerequisite(s):** RSD 812, RSD 814, or consent of instructor.

**RSD 825 Restorative Dentistry III (1)**

This course is a continuation of RSD 823 with emphasis on single tooth indirect intracoronal restorations and restorations of the endodontically treated tooth.

**Prerequisite(s):** RSD 823.

**RSD 826 Preclinical Restorative Dentistry III (2)**

This is a preclinical course with emphasis on dental hard tissue surgery and restorative procedures for single tooth indirect restorations. Clinical simulation procedures are performed on manikins and extracted teeth.

**Prerequisite(s):** RSD 823, RSD 824; **Corequisite(s):** RSD 825.

**RSD 831 Clinical Restorative Dentistry II (4)**

A continuation of RSD 821 as well as some clinical application of principles taught in RSD 824. The emphasis continues to be on the delivery of primary care type treatment with increasing competency and proficiency. Some emphasis is directed toward elementary experiences in rehabilitative type treatment procedures and occlusal dysfunctions. Clinic, 120 hours

**Prerequisite(s):** RSD 821 and RSD 824; **Corequisite(s):** PRO 836 and PRO 834.

**RSD 835 Advanced Esthetics in Restorative Dentistry (2)**

This course is designed to introduce current concepts in esthetic restorative dentistry to undergraduate dental students in their third year. The techniques presented will build upon previously developed restorative didactic and clinical knowledge, but incorporate additional dental techniques and materials developed specifically for esthetic dentistry. Current dental materials being used by this discipline will be discussed as they apply to specific topics. Lecture 16 hours;



laboratory, 27 hours.

**Prerequisite(s):** RSD 810, 812, 814, 816, 821, 822, 823/825 824, 826.

**RSD 840 Restorative Dentistry Update (1)**

Students are provided current information on advanced restorative dentistry clinical procedures and materials. Emphasis will be given to diagnosis, treatment planning and treatment of the complex restorative dentistry patient. The format of the course will be "clinical case presentation." Lecture, 20 hours

**Prerequisite(s):** PRO 836 and PRO 834.

**RSD 841 Clinical Restorative Dentistry III (3)**

As the final phase in the undergraduate clinical continuum, this course continues to emphasize primary care concepts and proficiency. In addition, more complicated rehabilitative type care and occlusal dysfunction problems are encountered by the student under faculty supervision.

**Prerequisite(s):** PRO 836, RSD 831 and PRO 834.

**RSD 880 Compacted Gold Restorations (Elective) (1)**

This course is designed to facilitate advanced comprehensive dental treatment on patients seeking complex esthetic and implant care in general practice. The use of a comprehensive analysis of a variety of problem based clinical situations are presented to encourage critical thinking in developing treatment plans and the predictability of treatment outcomes. Didactic exercises which aid in the development of clinical skills on patient data collection, treatment planning, and provisional restorations, and the most appropriate final prostheses will be discussed and researched. This course utilizes the "Problem Based Learning" concept developed by the Harvard School of Education.

**Prerequisite:** Completion of CDS 835 and PRO 834 or consent of course director.

**RSD 883 Introduction to Sports Dentistry (Elective) (1)**

Introduction to Sports Dentistry is an elective course designed to educate about the opportunities available to become involved with sports teams in your community. The course topics will include: Types of dental injuries related to athletics, prevention of injuries, role of team dentist, types of sports guards and methods of fabrication of sports guards.

**Prerequisite(s):** 4th year dental student in good standing; consent of course director. Note: Scheduling of this course will be outside the regularly scheduled clinic/class time.