

PROGRAM GUIDE

December 2024



Holiday Travel Made Easy

Tips to Simplify Your Seasonal Adventures

PBI

South Florida's Favorite Airport Adds Another Airline

LIVE COVERAGE

Board of County Commissioners Meetings

Watch Every Meeting *LIVE!*

Know Your County

Youth Services: Providing Resources & Opportunities

Community Revitalization: Building Vibrant Neighborhoods

Consumer Focus

Avoiding Cyber Scams & Fraud

PBC Insight

County Thrift Store: Celebrates 30th Anniversary

WHERE TO WATCH PBC TV:

Comcast® Xfinity®	Channel 20
AT&T® U-verse®	Channel 99
Hotwire® Fision®	Digital Access Channel 20
Breezeline™	Channel 76

Watch live online or view our latest online programs anytime on demand at

www.pbc.gov



DECEMBER 2024



Watch live online or view our latest online programs anytime on demand at www.pbc.gov

SUNDAY		MONDAY		TUESDAY		WEDNESDAY		THURSDAY		FRIDAY		SATURDAY	
7:00 a	Community Bulletin Board	7:00 a	Community Bulletin Board	7:00 a	Community Bulletin Board	7:00 a	Community Bulletin Board	7:00 a	Community Bulletin Board	7:00 a	Community Bulletin Board	7:00 a	Community Bulletin Board
8:00 a	PBC Insight	8:00 a	inView	8:00 a	Know Your County	8:00 a	Know Your County	8:00 a	Inside History	8:00 a	Those Who Care	8:00 a	Special Edition
8:30 a	SUNDAY MORNING MTG	8:30 a	Those Who Care	8:30 a	Art Adventures	8:30 a	Politically Speaking	8:30 a	Art of Making Place	8:30 a	Hooked On Palm Bches	8:30 a	Exploring Education
9:00 a	REPLAYS AT 8:30 AM	9:00 a	Fire Rescue Today	9:00 a	BCC LIVE MEETINGS	9:00 a	LIVE MEETING COVERAGE	9:00 a	MEETING COVERAGE	9:00 a	MEETING COVERAGE	9:00 a	Know Your County
9:30 a	DECEMBER 1	9:30 a	Special Edn: Flood Maps	9:30 a	DECEMBER 3: 9:30 AM	9:30 a	DECEMBER 11: 9:00 AM	9:30 a	DECEMBER 5: 9:00 AM	9:30 a	DEC 6: 9:00 AM (REPLAY)	9:30 a	Fire Rescue Today
10:00 a	11/26 BCC WORKSHOP	10:00 a	Behind The Star	10:00 a	BCC BOARD MEETING	10:00 a	DECEMBER 18: 9:30 AM	10:00 a	DECEMBER 12: 9:30 AM	10:00 a	12/05 COMM ON ETHICS MTG	10:00 a	Hooked On Palm Bches
10:30 a	DECEMBER 8	10:30 a	Art of Making Place	10:30 a	DECEMBER 10: 9:30 AM	10:30 a	DECEMBER 18: 9:30 AM	10:30 a	DECEMBER 12: 9:30 AM	10:30 a	DECEMBER 13: 9:00 AM	10:30 a	inView
11:00 a	12/03 BCC BOARD MTG	11:00 a	Politically Speaking	11:00 a	BCC WORKSHOP	11:00 a	LEGISLATIVE DEL.	11:00 a	BCC ZONING HEARING	11:00 a	PLANNING COMM MTG	11:00 a	Inside History
11:30 a	12/05 ZONING COMM HRG	11:30 a	PBC Insight	11:30 a		11:30 a	PUBLIC HEARING	11:30 a		11:30 a		11:30 a	PBC Insight
12:00 p	12/05 COMM ON ETHICS MTG	12:00 p	Community Bulletin Board	12:00 p	Community Bulletin Board	12:00 p	Community Bulletin Board	12:00 p	Community Bulletin Board	12:00 p	MEETING REPLAYS	12:00 p	Community Bulletin Board
12:30 p	DECEMBER 15	12:30 p	Community Bulletin Board	12:30 p	Community Bulletin Board	12:30 p	Community Bulletin Board	12:30 p	Community Bulletin Board	12:30 p	DEC 6: 1:00 PM REPLAYS	12:30 p	Community Bulletin Board
1:00 p	12/10 BCC WORKSHOP	1:00 p	Lagoon Projects	1:00 p	Community Bulletin Board	1:00 p	Community Bulletin Board	1:00 p	LIVE MEETING COVERAGE	1:00 p	12/03 BCC BOARD MTG	1:00 p	Politically Speaking
1:30 p	12/11 SWA BOARD MTG	1:30 p	On The Town	1:30 p	Community Bulletin Board	1:30 p	Community Bulletin Board	1:30 p	DECEMBER 5: 1:30 PM	1:30 p	12/05 ZONING COMM HRG	1:30 p	Special Edn: Flood Maps
2:00 p	12/12 BCC ZONING HRG	2:00 p	Hooked On Palm Bches	2:00 p	Community Bulletin Board	2:00 p	Community Bulletin Board	2:00 p	COMM ON ETHICS MTG	2:00 p	DEC 13: 1:00 PM REPLAYS	2:00 p	Consumer Focus
2:30 p	12/13 PLANNING COMM MTG	2:30 p	Know Your County	2:30 p	Community Bulletin Board	2:30 p	Community Bulletin Board	2:30 p		2:30 p	12/10 BCC WORKSHOP	2:30 p	Behind The Star
3:00 p	DECEMBER 22	3:00 p	Inside History	3:00 p	Community Bulletin Board	3:00 p	Community Bulletin Board	3:00 p		3:00 p	12/11 SWA BOARD MTG	3:00 p	On The Town
3:30 p	12/18 LEGIS. DELEGATION	3:30 p	Exploring Education	3:30 p	Community Bulletin Board	3:30 p	Community Bulletin Board	3:30 p		3:30 p	12/12 BCC ZONING HRG	3:30 p	County Connection
4:00 p	PUBLIC HEARING	4:00 p	Politically Speaking	4:00 p	Community Bulletin Board	4:00 p	Community Bulletin Board	4:00 p		4:00 p	DEC 20: 1:00 PM REPLAY	4:00 p	Art of Making Place
4:30 p		4:30 p	PBC TV Presents	4:30 p	Community Bulletin Board	4:30 p	Community Bulletin Board	4:30 p		4:30 p	12/18 LEGIS. DEL. PUBIC HRG	4:30 p	Lake Worth Lagoon
5:00 p		5:00 p	Community Bulletin Board	5:00 p	Community Bulletin Board	5:00 p	Community Bulletin Board	5:00 p		5:00 p		5:00 p	Classic Arts Showcase
5:30 p		5:30 p	Community Bulletin Board	5:30 p	Community Bulletin Board	5:30 p	Community Bulletin Board	5:30 p		5:30 p		5:30 p	Classic Arts Showcase
6:00 p		6:00 p	Community Bulletin Board	6:00 p	Community Bulletin Board	6:00 p	Community Bulletin Board	6:00 p		6:00 p		6:00 p	Classic Arts Showcase
6:30 p		6:30 p	Community Bulletin Board	6:30 p	Community Bulletin Board	6:30 p	Community Bulletin Board	6:30 p		6:30 p		6:30 p	Classic Arts Showcase
7:00 p		7:00 p	Community Bulletin Board	7:00 p	Community Bulletin Board	7:00 p	Community Bulletin Board	7:00 p		7:00 p		7:00 p	Classic Arts Showcase
7:30 p	Classic Arts Showcase	7:30 p	Community Bulletin Board	7:30 p	Community Bulletin Board	7:30 p	Community Bulletin Board	7:30 p		7:30 p		7:30 p	Classic Arts Showcase
8:00 p	Classic Arts Showcase	8:00 p	Community Bulletin Board	8:00 p	Community Bulletin Board	8:00 p	Community Bulletin Board	8:00 p		8:00 p		8:00 p	Classic Arts Showcase
8:30 p	Classic Arts Showcase	8:30 p	Community Bulletin Board	8:30 p	Community Bulletin Board	8:30 p	Community Bulletin Board	8:30 p		8:30 p		8:30 p	Classic Arts Showcase
9:00 p	Classic Arts Showcase	9:00 p	Community Bulletin Board	9:00 p	Community Bulletin Board	9:00 p	Community Bulletin Board	9:00 p		9:00 p		9:00 p	Classic Arts Showcase
9:30 p	Classic Arts Showcase	9:30 p	Community Bulletin Board	9:30 p	Community Bulletin Board	9:30 p	Community Bulletin Board	9:30 p		9:30 p		9:30 p	Classic Arts Showcase
10:00 p	Classic Arts Showcase	10:00 p	Community Bulletin Board	10:00 p	Community Bulletin Board	10:00 p	Community Bulletin Board	10:00 p		10:00 p		10:00 p	Classic Arts Showcase
10:30 p	Classic Arts Showcase	10:30 p	Community Bulletin Board	10:30 p	Community Bulletin Board	10:30 p	Community Bulletin Board	10:30 p		10:30 p		10:30 p	Classic Arts Showcase
11:00 p	Classic Arts Showcase	11:00 p	Community Bulletin Board	11:00 p	Community Bulletin Board	11:00 p	Community Bulletin Board	11:00 p		11:00 p		11:00 p	Classic Arts Showcase
11:30 p	Classic Arts Showcase	11:30 p	Community Bulletin Board	11:30 p	Community Bulletin Board	11:30 p	Community Bulletin Board	11:30 p		11:30 p		11:30 p	Classic Arts Showcase
12:00 - 7:00 a	The Florida Channel	12:00 - 7:00 a	The Florida Channel	12:00 - 7:00 a	The Florida Channel	12:00 - 7:00 a	The Florida Channel	12:00 - 7:00 a	The Florida Channel	12:00 - 7:00 a	The Florida Channel	12:00 - 7:00 a	The Florida Channel

LEGEND: Meetings Community Bulletin Board Locally Produced Show Show Produced by External Source New Show Classic Arts Showcase



Know Your County

All this month on PBC TV Channel 20... Discover the invaluable resources available in Palm Beach County on "Know Your County!" This episode features exclusive interviews with the Director of Youth Services and the Director of the Office of Community Revitalization, showcasing free programs and services designed to empower youth and revitalize communities! Don't miss it!

Airs Mondays at 2:30pm and 9:30pm, Tuesdays at 8:00am, Wednesdays at 9:30am, Thursdays at 9:00am, Fridays at 10:30am and 8:00pm, Saturdays at 9:00am and Sundays at 10:00am



PBC TV Insight

You don't have to travel too far to find some real treasures. The Palm Beach County Thrift Store is observing 30 years of serving as an outlet for surplus government property from the County and many other area government entities. See how residents and visitors are getting in on the action and experiencing great deals & bargains, all while benefiting county taxpayers.

Airs Mondays at 11:00am, Tuesdays and Thursdays at 4:30pm, Wednesdays at 10:30pm, Fridays and Saturdays at 11:30am and Sundays at 8:00am



Free Event
When: Jan. 11, 2025
7 a.m.-12 p.m.
Location: 13400 S. State Road 7
Delray Beach

- Drop off lithium batteries and products containing them.
- Bring up to six boxes of documents to be shredded onsite.



Programs are subject to change.



Learn More: swa.org/hcrc



PBC Board of County Commissioners Meetings are presented live on 1st & 3rd Tuesdays. PBC Planning Commission Meetings are presented live on the 2nd Fridays, preempting regular programming on those days. PBC Zoning Meetings are presented live on the 1st and 4th Thursdays, preempting regular programming on those days. PBC Commission on Ethics Meetings are presented live on 1st Thursdays, preempting regular programming on those days. PBC School District Board Meetings and Workshops are presented live on Wednesdays, preempting regular programming.



Lithium Batteries
Battery Smart. Fire Smart.



Visit swa.org/lib for a list of common household items that contain lithium batteries.

Drop at Home Chemical & Recycling Center or retailer near you



What would you like to see on PBC TV?

If you have questions, comments or suggestions on PBC TV programming, please contact us. You can give us a call at 561-355-4573, or contact with us online at pbctv@pbc.gov. We welcome your feedback!

DECEMBER 2024

Meetings on PBC TV Channel 20

SUNDAY	MONDAY	TUESDAY	WEDNESDAY	THURSDAY	FRIDAY	SATURDAY
1 8:30 AM REPLAY 11/26 BCC Workshop	2	3 9:30 AM BCC Board Meeting 6:00 PM REPLAY 12/03 BCC Board Meeting	4	5 9:00 AM Zoning Commission Hearing 1:30 PM Commission on Ethics Meeting 6:00 PM REPLAY 12/05 Zoning Commission Hearing	6 9:00 AM REPLAY 12/05 Commission on Ethics Meeting 1:00 PM REPLAYS 12/03 BCC Board Meeting 12/05 Zoning Commission Hearing	7
8 8:30 AM REPLAYS 12/03 BCC Board Meeting 12/05 Zoning Commission Hearing 12/05 Commission on Ethics Meeting	9 6:00 PM REPLAY 12/05 Commission on Ethics Meeting	10 9:30 AM BCC Workshop 6:00 PM REPLAY 12/10 BCC Workshop	11 9:30 AM SWA Board Meeting 6:00 PM REPLAY 12/11 SWA Board Meeting	12 9:30 AM BCC Zonning Hearing 6:00 PM REPLAY 12/12 BCC Zoning Hearing	13 9:00 AM Planning Commission Meeting 1:00 PM REPLAYS 12/10 BCC Board Workshop 12/11 SWA Board Meeting 12/12 BCC Zoning Hearing 6:00 PM REPLAY 12/13 Planning Commission Meeting	14
15 8:30 AM REPLAYS 12/10 BCC Workshop 12/11 SWA Board Meeting 12/12 BCC Zoning Hearing 12/13 Planning Commission Meeting	16	17	18 9:30 AM Legislative Delegation Public Hearing 5:00 PM School District Regular Board Meeting 6:00 PM REPLAY 12/18 Legislative Delegation Public Hearing	19	20 1:00 PM 12/18 Legislative Delegation Public Hearing	21
22 8:30 AM REPLAY 12/18 Legislative Delegation Public Hearing	23	24	25	26	27	28
29	30	31				

LEGEND:

Live Meeting Coverage

Meeting Replays

School Board - Live

Dear Palm Beach County Resident,

As we reflect on the past year, it's clear why Palm Beach International Airport (PBI) continues to be South Florida's favorite airport. We are honored to have been named the 5th Best Airport in the U.S. in the Condé Nast 2024 Readers' Choice Awards and the 3rd Best U.S. Airport in Travel + Leisure's 2024 World's Best Awards. These recognitions and being ranked 7th Best Medium-Size Airport in the J.D. Power North America Airport Satisfaction Study highlight our commitment to providing a world-class travel experience.

Whether you're starting your journey or returning home, PBI strives to make travel easy and stress-free. With amenities like pet parks, complimentary Wi-Fi, and the shortest TSA wait times in the U.S., we focus on ensuring your time with us is as enjoyable as your destination.

You may have also noticed ongoing construction in Concourse B. We are making significant progress on the Concourse B expansion project, enhancing both capacity and the passenger experience. These improvements will bring exciting updates to our terminal, and we sincerely appreciate your patience as we work to make PBI even better for you.

This year, we celebrated exciting milestones, including welcoming Porter Airlines with nonstop service to Toronto. With 14 airlines and approximately 200 daily flights, we're proud to connect you to new and returning destinations like Chicago (ORD), Denver (DEN), Nashville (BNA) and more. Visit pbia.org/new-nonstop for all of our nonstop destinations.

Beyond travel, PBI is vital to Palm Beach County's economy, contributing over \$4.6 billion to South Florida. Operating as a mini-city, PBI has its own on-site hotels, entertainment venues and Aircraft Rescue and Firefighting Station, as well as dedicated Palm Beach Sheriff's Office staff, engineers, planners, electricians, landscapers, painters and more.

PBI is part of a robust network managed by the Palm Beach County Department of Airports. This system includes four airports, each uniquely supporting the diverse needs of our aviation community: PBI, North Palm Beach County General Aviation Airport (F45), Palm Beach County Park Airport (LNA) and Palm Beach Glades Airport (PHK).

As we look ahead to 2025, we are excited to welcome even more routes and opportunities for our passengers. Thank you for trusting PBI with your travel needs. Wherever you're heading, we look forward to welcoming you back home.



Laura Beebe

Department Director

Palm Beach County Department of Airports Director

Holiday Travel Tips

- Book the earliest flight and avoid heavy travel days.
- Stay in touch with your airline for flight status changes.
- Make sure you do not have any prohibited items in your carry on.
- Parking areas fill up quickly. Arrive early to ensure you're able to find a space.
- Consider using Lyft, Uber, taxis and Palm Tran buses for your transportation to PBI.
- Always lock your car doors when parking and never leave valuables inside.
- Arrive early - two hours is recommended.
- Expect longer than usual TSA lines around the holidays and arrive early.
- Consider checking your bags.

Palm Beach
INTERNATIONAL AIRPORT



Let's Travel



Travel + Leisure's World's Best Awards for 2024 ranks PBI in the Top 10 Best U.S. Airports.

More than 35 Nonstop Destinations!

Asheville (AVL)

Atlanta (ATL)

Atlantic City (ACY)

Baltimore (BWI)

Boston (BOS)

Buffalo (BUF)* **NEW**

Charleston (CHS)*

Charlotte (CLT)

Chicago-O'Hare (ORD)

Cincinnati (CVG)*

Cleveland (CLE)* **NEW**

Dallas-Ft. Worth (DFW)

Denver (DEN)*

Detroit (DTW)

Grand Rapids (GRR) **NEW**

Hartford (BDL)

Houston-Intercontinental (IAH)*

Indianapolis (IND)*

Islip (ISP)

Los Angeles (LAX)*

Marsh Harbour, Bahamas (MHH)

Minneapolis (MSP)*

Montreal, Canada (YUL)*

Nashville (BNA) **NEW**

New Haven (HVN)

New York-JFK (JFK)

New York-LaGuardia (LGA)

Newark (EWR)

Norfolk (ORF) **NEW**

Philadelphia (PHL)

Pittsburgh (PIT)

Providence (PVD)

Raleigh-Durham (RDU)

St. Louis (STL)*

Toronto, Canada (YYZ)*

Trenton (TTN)*

Washington-Reagan (DCA)

Washington-Dulles (IAD)*

Westchester-White Plains (HPN)

Wilmington (ILG)*

*Seasonal Service

pbia.org





**HAPPY
HANUKKAH**

KEEP

**MATCHES &
LIGHTERS**

**LOCKED OUT OF
SIGHT AND
REACH FROM
CHILDREN.**



**YOUR SAFETY.
OUR PRIORITY.**



**CHRISTMAS
TREES NEED
WATER TOO, JUST
LIKE ME AND YOU!**



**WATER
IT DAILY
TO AVOID
DEVASTATION.**



**YOUR SAFETY.
OUR PRIORITY.**

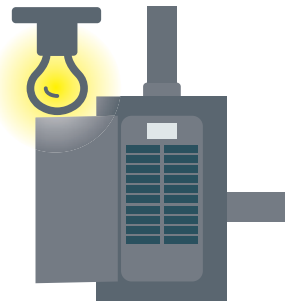


Be fire smart

with electricity in your home.

45, 

There are approximately **45,000** home electrical fires each year.



Half of all home electrical fires involve lighting equipment or home electrical wiring.



Home electrical fire deaths peak between **midnight and 8 a.m.**

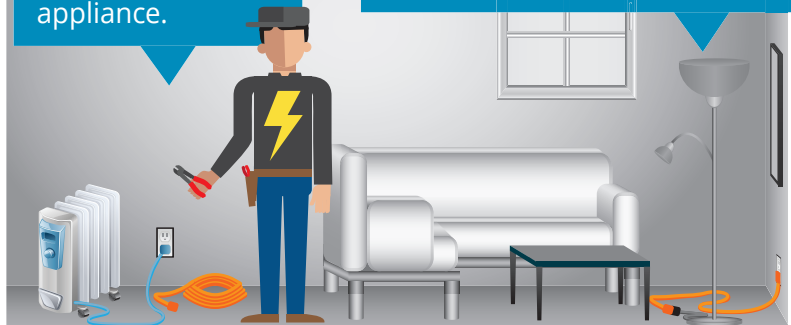


Peak months for electrical fire deaths are **November through March.**

Plug only 1 heat-producing appliance (like a coffee maker, space heater or microwave) directly into a wall outlet at a time.



Never use an extension cord with a heat-producing appliance.



Extension cords should only be used temporarily. Have an electrician install additional wall outlets where you need them.



For more information about electrical fire safety, visit www.usfa.fema.gov and www.nfpa.org/public-education.



VOLUNTEER



EVENTS



SPORTS



CLASSES



NATURE



LOOKING FOR FREE & AFFORDABLE ACTIVITIES?

Sign up

to receive monthly calendar highlights of free and affordable activities taking place in Palm Beach County's parks! **What's Happening in PBC Parks** is full of local activities for all ages.



3 Ways to Subscribe

- 1 **Email** pbcparcs@pbcgov.org and use *What's Happening in PBC Parks* in the subject line.
- 2 **Visit** pbcparcs.com and click on the link to sign up for *What's Happening in PBC Parks*.
- 3 **Scan** the QR Code with the camera on your phone to open the signup page in your browser.



DESTINATION EXPLORATION WITH PALM BEACH COUNTY PARKS & RECREATION



A great opportunity for people of all ages to have fun, learn new things, and get active at your county parks!

CHOOSE YOUR ADVENTURE

FREE FITNESS IN THE PARK

- Yoga • Nature Meditation
- Functional Fitness • Boot Camp

For more information, call: (561) 963-6754.

TO VIEW FULL LIST OF PROGRAMS...

Please visit

<https://bit.ly/3nUwifc>

or call (561) 963-6754 for more information. Online payment required for all fee based programs.



OUTDOOR LEARNING ADVENTURES

- Scavenger Hunts • Archery
- Animal Programs • Fishing • Canoeing

To register or for more information contact a location near you:

Daggerwing Nature Center • 11435 Park Access Rd., Boca Raton, FL 33498 | (561) 629-8760

Green Cay Nature Center • 12800 Hagen Ranch Rd., Boynton Beach, FL 33437 | (561) 966-7000

Okeehetee Nature Center • 7715 Forest Hill Blvd., West Palm Beach, FL 33413 | (561) 233-1400

Riverbend Park • 9060 Indiantown Rd., Jupiter, Florida 33478 | (561) 741-1359

Disability and Neurodiversity Town Hall

Learn about resources and support available at the Library and share your thoughts about how we can improve accessibility.

Sat, Dec 07

Sábado, 07 de diciembre

2:00 pm - 3:00 pm

Large print materials and assistive listening devices will be available.

Foro comunitario sobre discapacidad y neurodiversidad: Infórmese sobre los recursos y asistencia disponible en la biblioteca y comparta sus ideas sobre cómo podemos mejorar la accesibilidad. Materiales en letra grande y dispositivos de asistencia auditiva estarán disponibles.

Belle Glade Branch

725 NW 4th St
Belle Glade, 33430
561-996-3453

Mon, Dec 09, 3:00 pm - 4:00 pm

Large print materials and assistive listening devices will be available.

Glades Road Branch

20701 95th Avenue South
Boca Raton, 33434
561-482-4554

Tue, Dec 10, 6:00 pm - 7:00 pm

An ASL interpreter, large print materials and assistive listening devices will be available.

Lantana Road Branch

4020 Lantana Road
Lake Worth, 33462
561-304-4500

Sat, Dec 14, 10:30 am - 11:30 am

This sensory-friendly event will have large print materials and assistive listening devices available.

Jupiter Branch

705 Military Trail
Jupiter, 33458
561-744-2301



CONNECT. INSPIRE. ENRICH.

www.pbclibrary.org

[f](#) [i](#) [X](#) [in](#) [@](#) #pbclibrary



Palm Beach County
Board of County Commissioners

DECEMBER 2024 PBC TV PROGRAM GUIDE - WORD SEARCH

W Y B F V W H Z S I L O P A E N N I M G H V G V N W W K Q
 O N I A I N I G R I V E Z J D E S R F Q E G D S L H R E K
 O A K R E W J S B U G N O R F O L K F U D A L L A S B J H
 M G D S X G T N I E F A L S L H R Y O U K W V F I A O I K
 B I N Y P N E R X L J C T N O N M J X D Y I N N H E U O A
 Z H I K X W N Y X V O I E L H E Y N G R S V O A Y N H L P
 B C V G Y S J E K N I P H O A A R T O L W B M D K D M R O
 O I N O K U A F N J L N A J C N D O I T D A O O S Z F O T
 L M R J E E S E E N F A O N L R T P M L S C U X Z H Z L K
 A K N J S W C R O E Z G A U A N H A G I I E K C O V N S F
 F H P Q F T V T I G A I M U C I S D G C T S L T Q P H A H
 F B V C I B N O P C N J U P X H D F T Q J L N R L K V X T
 U O G C S E O S I A F H G X R Q A N X T U O A C A V E E R
 B T U U R G A H V O F B U S O O L R I S R S L B C H M T K
 W T E T I R C L G F R Z I J E D V L L O C E T D N D C L M
 A U D C O I Y O I H O U G I B L U I T O V S E Y S Z R K A
 S J R G I S S E L L I V H S A N E K D E T N I Q T A I O R
 H G K F N U C J R C G L T L T D D G L E V T H I L J G V S
 E H X N P X I X R V S E O A U U T A N E N Q E E O W V J H
 V Z E A Y N O R T H C A R O L I N A R A M C I W U Y P W H
 I P C D N O T G N I H S A W S D G D K U S G E H I V N O A
 L K T D H O J L N Y J K T D W W D M E B H O U Z S L O Y R
 L Q N H E U B M C O X B Y F H N U D S L H O L U Z Z T W B
 E R F N E Y P E G Y Q Z X X K N O T S O B Q P A N M S W O
 Z W I K I E G G P G I I S L G R A N D R A P I D S H U S U
 B C A N A D A J J P F X D E W M S Z T E U A S O E O O Q R
 U O E A A K X H N C T S Y L A E R T N O M O B W F L H X B
 X M Q R Y Q J F L Y P B I I V B Y F D U B B V Y Q R K M M
 T K Z P O U E D N O T G N I M L I W N E W J E R S E Y S T

Asheville
 Atlanta
 Bahamas
 Baltimore
 Boston
 Buffalo
 Canada
 Charleston
 Charlotte
 Chicago

Cleveland
 Connecticut
 Dallas
 Denver
 Fly PBI
 Grand Rapids
 Houston
 Indianapolis
 Islip
 Los Angeles

Marsh Harbour
 Michigan
 Minneapolis
 Montreal
 Nashville
 New Jersey
 New York
 Norfolk
 North Carolina
 Ohio

Pennsylvania
 Providence
 Raleigh
 St. Louis
 Texas
 Toronto
 Trenton
 Virginia
 Washington DC
 Wilmington DE

On A Budget?

PAY YOUR PROPERTY TAX PAYMENT IN 4 INSTALLMENTS!



Complete Application Online By:
April 30, 2025



Payment Schedule

PAYMENT 1

June 30 or July 31, 2025

PAYMENT 2

September 30, 2025

PAYMENT 3

December 31, 2025

PAYMENT 4

March 31, 2026

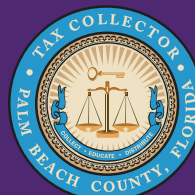


**SCAN TO
APPLY!**

For More Information Visit
www.pbctax.gov/ipp

Installment Payment Plan Eligibility

- Your estimated property tax must total more than \$100.
 - Complete application online by April 30, 2025.
- For new enrollees, the Installment Payment Plan (IPP) goes into effect for the 2025 property taxes not your current 2024 bill.



ANNE M. GANNON
CONSTITUTIONAL TAX COLLECTOR
Serving Palm Beach County
Serving you.



Are You A Veteran?

Veteran Services serves military veterans and their dependents, including Merchant Marines and other auxiliaries, in developing and filing claims and appeals with the Department of Veterans Affairs.

County Veteran Service Officers are veterans who have been specially trained to act on behalf of veterans, & maintain accreditation and certification through the Department of Veteran Affairs.

Services Provided

- ★ Compensation
- ★ Pension
- ★ Education
- ★ Aid and Attendance or Household Benefits
- ★ Medical Care
- ★ Home Loan Guaranty
- ★ Burial Benefits
- ★ Income Verification
- ★ Information and Referral



State Benefits

- ★ Homestead Tax Exception
- ★ State Veteran Nursing Homes and Assisted Living Facilities
- ★ Special Motor Vehicle License Plate
- ★ Certification of Discharge Papers
- ★ Identification Cards
- ★ Fishing Licenses
- ★ Preference in Employment

Office Hours

Monday - Friday 8:00 am - 5:00 pm
Call for Outpost Locations: 561-355-3084

Administrative Office

810 Datura Street
West Palm Beach, FL 33401
CSD-VeteranServices@pbc.gov
www.pbc.gov/communityservices

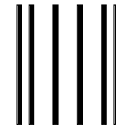


DECEMBER 2024 PBC TV PROGRAM GUIDE

Word Search Answer Key

W Y B F V W H Z S I L O P A E N N I M G H V G V N W W K Q
 O N I A I N I G R I V E Z J D E S R F Q E G D S L H R E K
 O A K R E W J S B U G N O R F O L K F U D A L L A S B J H
 M G D S X G T N I E F A L S L H R Y O U K W V F I A O I K
 B I N Y P N E R X L J C T N O N M J X D Y I N N H E U O A
 Z H I K X W N Y X V O I E L H E Y N G R S V O A Y N H L P
 B C V G Y S J E K N I P H O A A R T O L W B M D K D M R O
 O I N O K U A F N J L N A J C N D O I T D A O O S Z F O T
 L M R J E E S E E N F A O N L R T P M L S C U X Z H Z L K
 A K N J S W C R O E Z G A U A N H A G I I E K C O V N S F
 F H P Q F T V T I G A I M U C I S D G C T S L T Q P H A H
 F B V C I B N O P C N J U P X H D F T Q J L N R L K V X T
 U O G C S E O S I A F H G X R Q A N X T U O A C A V E E R
 B T U U R G A H V O F B U S O O L R I S R S L B C H M T K
 W T E T I R C L G F R Z I J E D V L L O C E T D N D C L M
 A U D C O I Y O I H O U G I B L U I T O V S E Y S Z R K A
 S J R G I S S E L L I V H S A N E K D E T N I Q T A I O R
 H G K F N U C J R C G L T L T D D G L E V T H I L J G V S
 E H X N P X I X R V S E O A U U T A N E N Q E E O W V J H
 V Z E A Y N O R T H C A R O L I N A R A M C I W U Y P W H
 I P C D N O T G N I H S A W S D G D K U S G E H I V N O A
 L K T D H O J L N Y J K T D W W D M E B H O U Z S L O Y R
 L Q N H E U B M C O X B Y F H N U D S L H O L U Z Z T W B
 E R F N E Y P E G Y Q Z X X K N O T S O B Q P A N M S W O
 Z W I K I E G G P G I I S L G R A N D R A P I D S H U S U
 B C A N A D A J J P F X D E W M S Z T E U A S O E O O Q R
 U O E A A K X H N C T S Y L A E R T N O M O B W F L H X B
 X M Q R Y Q J F L Y P B I I V B Y F D U B B V Y Q R K M M
 T K Z P O U E D N O T G N I M L I W N E W J E R S E Y S T

Detach postcard to mail



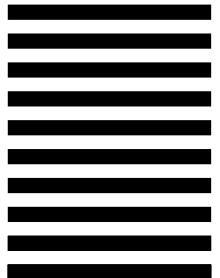
NO POSTAGE
NECESSARY
IF MAILED
IN THE
UNITED STATES

BUSINESS REPLY MAIL

FIRST-CLASS MAIL PERMIT NO. 1238 WEST PALM BEACH FL

POSTAGE WILL BE PAID BY ADDRESSEE

PBC TV CHANNEL 20
PUBLIC AFFAIRS DEPARTMENT
PALM BEACH COUNTY BCC
PO BOX 1989
WEST PALM BEACH, FL 33402-9881





Palm Beach County
Board of County Commissioners
Public Affairs Department
 PBC TV Channel 20
 P.O. Box 1989
 West Palm Beach, FL 33402-1989

PRSRT STD
 US POSTAGE
 PAID
 PERMIT #685
 WEST PALM BEACH, FL



PBC TV CHANNEL 20

Government & Education Television Station
A Division of Public Affairs
Board of County Commissioners

*Your Channel for Palm Beach County
 Programs & Services!*

Tel (561) 355-4573
 Fax (561) 355-6685

www.pbc.gov

PBC TV Program Guide is published monthly by the Palm Beach County Public Affairs Department. According to the provisions of the ADA, this brochure may be made available in an alternate format. Please call (561) 355-2754.



BOARD OF COUNTY COMMISSION MEETINGS

Meetings presented live on PBC TV Channel 20:

- Board of County Commissioners meetings
- County Commission workshops
- County Commission budget public hearings
- Zoning Board meetings (BCC)
- Zoning Commission meetings (advisory)
- Planning Commission meetings (advisory)
- Comprehensive Plan public hearings
- Solid Waste Authority Board of Governors meetings
- Commission on Ethics meetings
- Inspector General Committee meetings
- Palm Beach County Legislative Delegation meetings
- Palm Beach County School Board meetings

Detach postcard to mail

**Please complete the information below
 and mail or fax to (561) 656-7523**

Please complete the information below and email it to socialmedia@pbia.org, or send through the mail.

- How often do you fly out of PBI?**
 >1x Monthly Monthly Quarterly Yearly Other _____
- Which 3 destinations should be added as nonstop flight options from PBI?**
 1. _____ 2. _____ 3. _____
- What is your favorite reason to #flyPBI? (Check all that apply)**
 Convenient on-site parking Quick TSA wait times Nonstop flight options Easy-to-navigate terminal
 Other: _____
- Do you prefer flying from PBI over other airports in South Florida??**
 Yes No
- Do you follow PBI on Facebook, Instagram, X, LinkedIn or YouTube @flyPBI?**
 Yes No

Comments:



Catch all the news about your county government in this fast-paced, exciting show!
**Airs Sundays at 8am,
 Mondays at 4pm, Tuesdays at 3pm,
 Wednesdays & Fridays at 7pm,
 and Thursdays at 11am**



Scan this QR code with your smartphone to access PBC TV's live stream and local programs on-demand!



Palm Beach County Board of County Commissioners
 Maria G. Marino, Mayor, Sara Baxter, Vice Mayor
 Gregg K. Weiss, Joel Flores, Marci Woodward
 Maria Sachs, Bobby Powell, Jr.
 County Administrator Verdenia C. Baker