

*Sustainable Economy Advisory Council*



# SOVEREIGN ENERGY

March 26, 2024



MAYANE CHAVEZ BARUDIN  
(KEWA PUEBLO)  
EXECUTIVE DIRECTOR



MARISSA NARANJO  
(SANTA CLARA PUEBLO)  
DEPUTY DIRECTOR



## **OUR MISSION**

**Sovereign Energy builds the individual and collective power of Southwest Pueblos and Tribes to lead the way toward a just, interdependent, and sustainable energy future.**

## **OUR VISION**

**Tribal energy sovereignty and Indigenous voices centered within the renewable energy transition to remedy legacies of injustice and the rights of Indigenous peoples.**





# Sovereign Energy Values

**1**

**TRIBAL SOVEREIGNTY &  
SELF DETERMINATION**

---

**2**

**ENERGY AS AN ACT OF REPAIR**

---

**3**

**TRIBES AS CLIMATE LEADERS**

**4**

**PARTNERSHIPS &  
INTERCONNECTEDNESS**

---

**5**

**KINSHIP & BEING A GOOD RELATIVE**

---

**6**

**ADVANCEMENT THROUGH  
EDUCATION**





# Sovereign Energy Pillars

**1** RENEWABLE ENERGY EDUCATION

---

**2** STRATEGIC PROJECT PLANNING

---

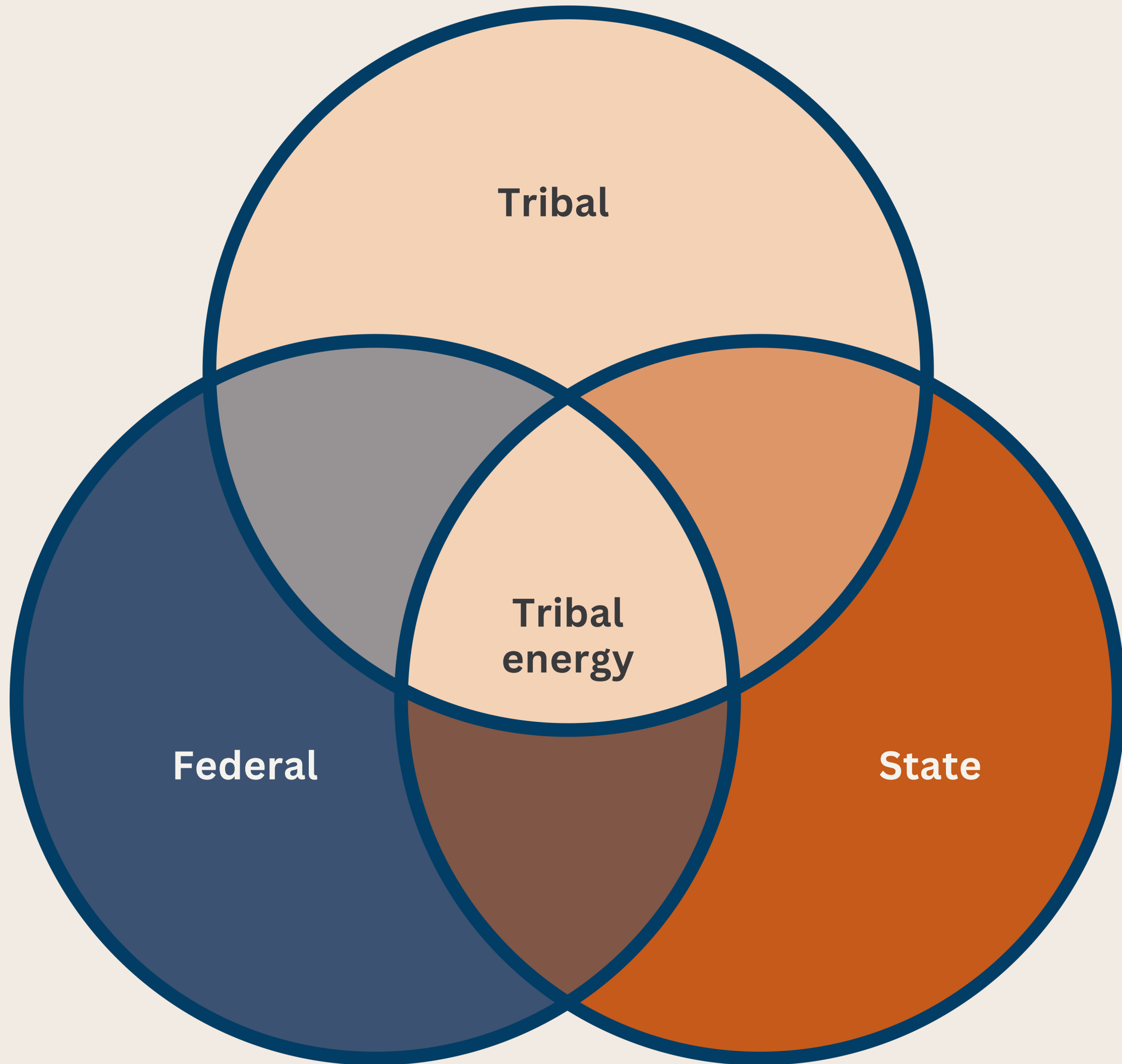
**3** POLICY & REGULATORY ADVOCACY

**4** TRIBAL CLIMATE &  
ENERGY RESILIENCE PLANNING

---

**5** CULTURAL RESOURCE PROTECTION







# OUR HISTORY

SOVEREIGN  
ENERGY

- Lack of capacity, staffing, and resources for Tribes to achieve their clean energy visions
- Tribes in different places in themes of renewable energy development
- Solar companies drawn wanting to develop on Tribal land following the passage of New Mexico's Community Solar Act
  - Themes:
    - Lack of transparency
    - Taking advantage of Tribes' sovereign status
- Creating further policy mechanisms and eliminating regulatory barriers to support Tribal energy sovereignty
- Upholding tribal sovereignty and cultural resource protection in the rise of renewable energy infrastructural developmen

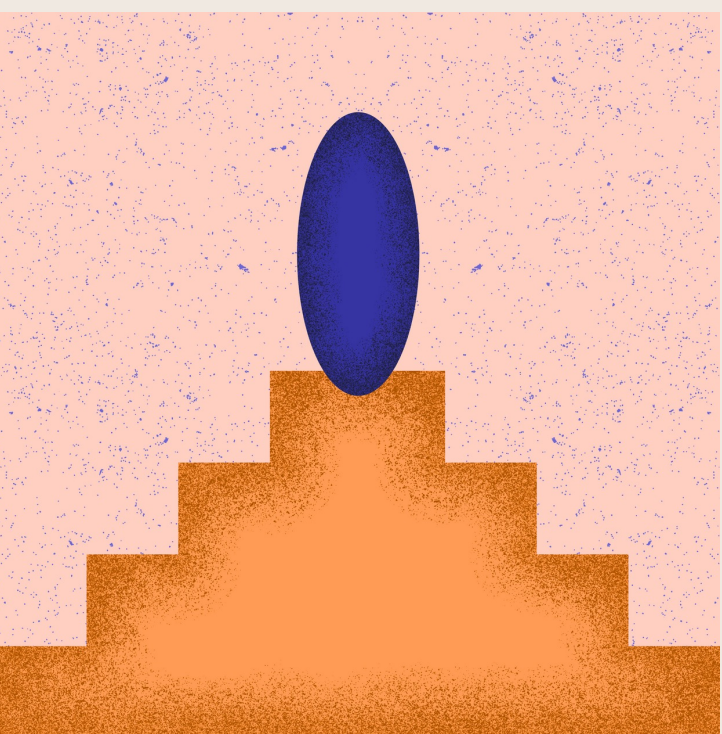


# CURRENT PROGRAMMING

SOVEREIGN  
ENERGY

- Tribal and Partner Outreach
  - Tribal Leadership Listening Sessions
  - Partner and Stakeholder Engagement
- Renewable Energy Education
  - Emerging Technologies White Papers and Webinars
- Cultural Resource Protection
  - Tribal Transmission Working Group
  - Developer Engagement
- Policy Advocacy
  - Monthly Tribal Energy and Environment Forum
  - State Legislative Session
  - Federal Energy Projects






# TRADITIONAL CULTURAL LANDSCAPES AND FEDERAL ENERGY PROJECTS

Caja del Rio Electrical Power Capacity Upgrade  
Project

Greater Chaco Region

LANL Site-Wide Environmental Impact Statement

BLM Solar Programmatic Environmental Impact  
Statement





# CAJA DEL RIO

## ELECTRICAL POWER CAPACITY UPGRADE PROJECT

### **Caja del Rio Traditional Cultural Landscape Challenges:**

Multi-jurisdictional

Agency management deficiencies

Vandalism of cultural resources

EPCU Transmission Line

### **Overview:**

The Department of Energy (DOE) National Nuclear Security Administration (NNSA) is proposing the construction and operation of a ~14 mile, 115-kilovolt transmission line through the Caja del Rio.



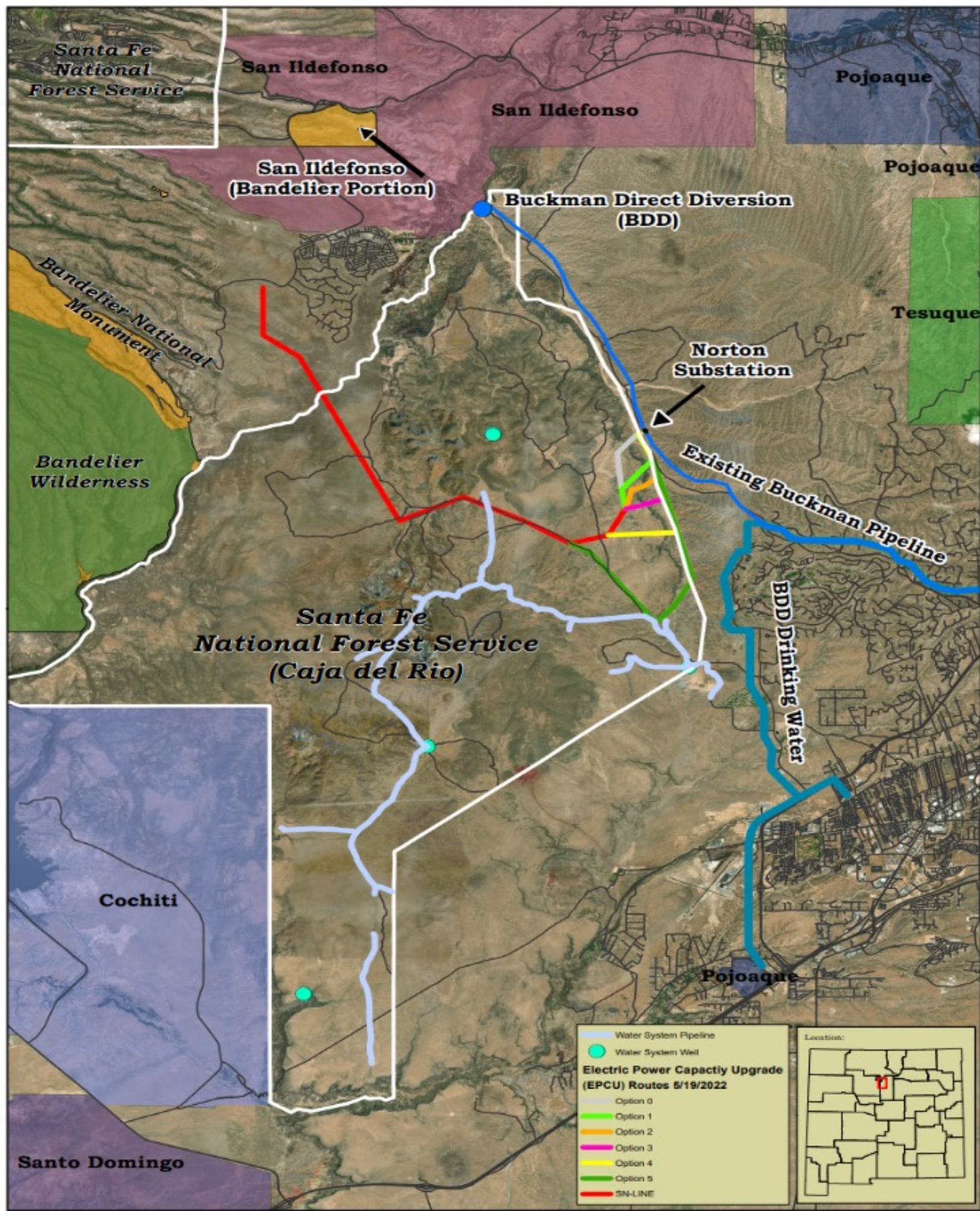
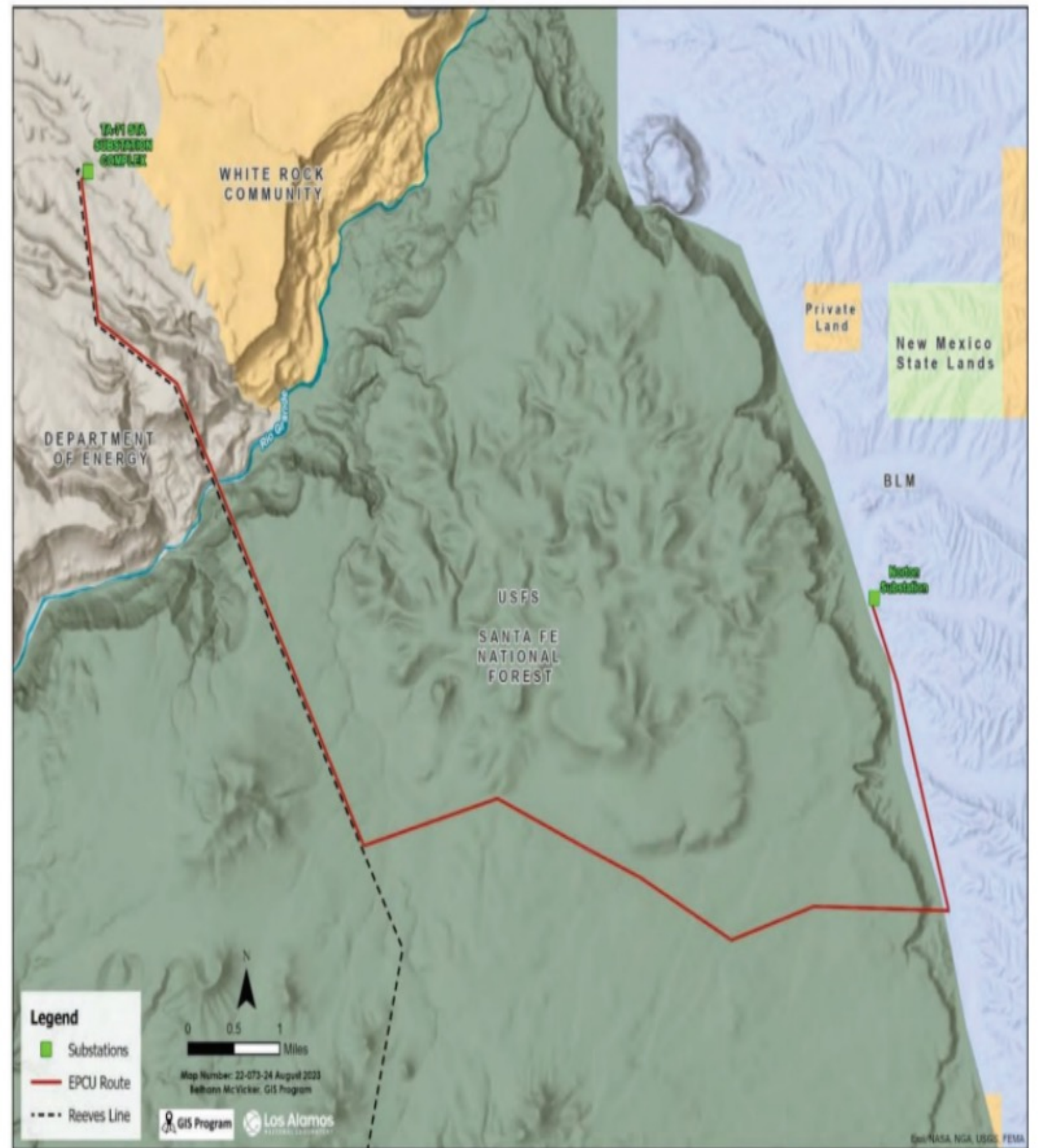


Image courtesy of High Water Mark LLC



EPCU Proposed Action Alternative



# GREATER CHACO REGION

## **Greater Chaco Cultural Landscape Approach:**

- 1) Seek withdrawal of federal lands surrounding the park and including its outliers from oil and mineral development;
- 2) Seek sufficient tribally led ethnographic studies and tribal consultation to proceed all other development in the Greater Chaco Region.

## **Concurrently running engagement and strategies by Pueblos:**

- Chaco Resource Management Plan Amendment (RMPA/EIS)
- National Historic Preservation Act Section 106 Programmatic Agreement (PA)
- Chaco Cultural Heritage Area Protection Act
- Chaco Tribally-Led Ethnographic Study
- DOI 20-Year Administrative Withdrawal
- DOI Honoring Chaco Initiative



LANL





# LANL

## SITE WIDE ENVIRONMENTAL IMPACT STATEMENT

### **Overview:**

The LANL SWEIS will analyze the potential environmental and cultural impacts (under NEPA and NHPA) of continuing operations of the Laboratory for approximately the next 15 years. The SWEIS will also analyze environmental impacts of legacy waste remediation conducted by DOE's Office of Environmental Management (DOE-EM).

### **APCG and Pueblo Scoping Concerns:**

- Insufficient tribal consultation in analysis of proposed expanded plutonium pit production
- Tribal consultation regarding prevention and mitigation of cultural resource impacts of each alternative
- Climate change increasing wildfire risk and impacts to human health, environment, and cultural resources. Inclusion of wildfire mitigation and protection measures.
- Tritium release plans with exposure risks and potential health impacts, and tribal consultation
- Address of legacy impacts to cultural resources, contamination, health disparities
- Remediation of legacy hazardous and mixed waste pollution
- Environmental and cultural effects of contaminated runoff to Rio Grande and tributaries
- Impacts to the Caja del Rio traditional cultural landscape

### **Current Status:**

NEPA Process – Draft Environmental Assessment is forthcoming Spring 2024



# BLM SOLAR PROGRAMMATIC ENVIRONMENTAL IMPACT STATEMENT (SPEIS)

BLM Western Solar Plan Update

## Overview:

- Update to the 2012 Western Solar Plan to support current and future national clean energy goals and site 25GW of renewable energy by 2025 and future development
- The Bureau of Land Management has proposed using up to 22 million acres of public land for solar projects in the western US including in Arizona, California, Colorado, Nevada, New Mexico, Utah, Idaho, Montana, Oregon, Washington, and Wyoming.

## NEPA Process

- Notice of Intent for the project took place December 2022
- Scoping took place early 2023
- Draft SPEIS is available for review
- **Comment period for Draft SPEIS is open through April 18, 2024.**

## NHPA Section 106

- 241 Tribes have been invited to be cooperating agencies and consult as of December 2022





DO YOU HAVE  
ANY QUESTIONS?





# TRIBAL COMMUNITY SOLAR CONFERENCE

APRIL 5TH, 2024





THANK YOU

**Contact information:**

Mayane Chavez Barudin | Executive Director

[mayane@sovereignenergy.org](mailto:mayane@sovereignenergy.org)

505-917-1984

Marissa Naranjo | Deputy Director

[marissa@sovereignenergy.org](mailto:marissa@sovereignenergy.org)

505-699-6703