



Water System Improvements Project Status Update

Martin County Water District

December 2024

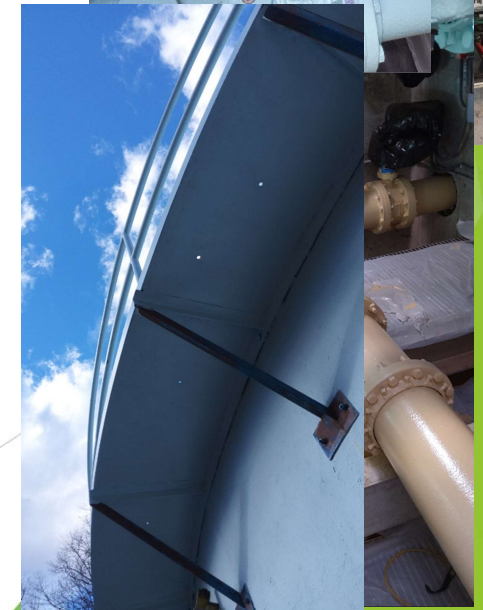
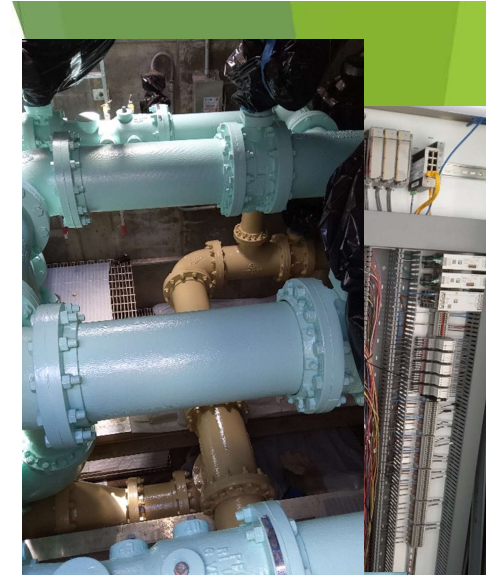


Projects Under Construction

WTP/RWI Improvements

► Project Status:

- Project is essentially complete except for Raw Water Intake Pumps.
- Large Pump is at Xylem for Repairs.
- Bell, MCWD, Alliance and Area Development District are working to resolve issues with the small pump. Bell will make recommendations concerning the pumps at tomorrow's MCWD Board meeting.



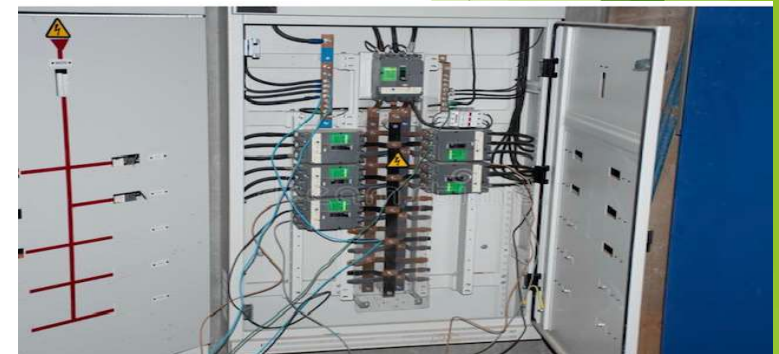
Kentucky 292 South Pumping Station & 292 South Tank Telemetry

► Need for the Project:

- Neither the Pumping Station nor Water Storage Tank it pumps to have operating telemetry.

► Project Status:

- Project Construction is Ongoing.



Mainline, Service Line, Meter Replacement In the Warfield/Collins Creek Area

- ▶ **Project Replaced the following in the Collins Creek Area:**
 - Existing Mainline
 - Existing Meters & Service Line
 - Existing Valves & Hydrants

- ▶ **Status:**
 - Project construction is complete and project closeout is underway.
 - Project eliminated two leaks (each approximately 20 gallon per minute) and several smaller leaks.



KYTC Projects

► Sester Branch Utility Relocation:

- Relocation of existing waterline to facilitate construction of a new bridge. Project is under construction.

► Kentucky 292 :

- Relocation of existing waterline to facilitate construction of new bridges/culverts. Project is out for bid.



Designed Projects

High School Pump Station/Tank Piping Modifications

▶ Construct Valve Vault and Check Valve

- Install Valve Vault and Check Valve to allow District to feed additional service areas with the High School Water Storage Tank.

▶ Project Status

- Project may be constructed when Funding is Available.

Projects in Design

USP Big Sandy, Eastern Kentucky Business Park & Big Sandy Airport Water Improvements / Otto Brown

► Components Remaining in Project from Original Scope

- Upgrade of the Existing Davella Pump Station. Construct Master Meter & Booster Chlorination.

► Proposed Revised Scope Components:

- Relocate the proposed Pump Station so that it replaces the existing Otto Brown Station. This station is beyond its useful life and subject to confined space constraints.
- Replace existing waterline in the vicinity of the Otto Brown Station that is subject to leaks.

► Project Status:

- All water lines have been designed and the pump station has been designed. Project is undergoing environmental review.



FEMA Backup Generator Project

► **Project includes the following:**

- One Generator to operate large VFD Controlled RWI Pump
- Two Generators to operate 60-HP VFD Controlled Pumping Stations



► **Project Status:**

- The project has been approved by FEMA with a budget of \$1,320,000.
- Project design will be completed when matching project funds are secured.



KYTC Utility Projects Awaiting Authorization

KYTC Projects

► Hunters Lane Utility Relocation:

- Relocation of existing waterline to facilitate construction of a new bridge for the KYTC Bridging Kentucky Program.

► KY 908 Guardrail:

- Relocation of existing 14” waterline along Route 908 to facilitate installation of new guardrail.

► Kentucky 40 at Buck Creek :

- Relocation of existing waterline to facilitate construction of new bridges/culverts. Scope has been finalized.



Projects in Development

Projects in Development

- ▶ Master Water Development Plan
- ▶ 40 East Water Improvement Project
- ▶ Coldwater Water Improvement Project
- ▶ Old Route 3 Water Improvement Project
- ▶ Water Treatment Plant to Turkey Tank Water Improvement Project
- ▶ Meter Replacement Project
- ▶ Turkey Water Storage Tank Rehabilitation/Painting
- ▶ Spicy Mountain Booster Pump Station and Water Line Extension Project
- ▶ Inez Water Line & Valve Replacement
- ▶ Distribution Building & Pipe Yard
- ▶ 292 Booster Station & Water Line Replacement
- ▶ Big Elk Water Line Replacement & Booster Station Rehabilitation



Projects in Development

- ▶ Buffalo Horn Water Line Replacement & Booster Station Rehabilitation
- ▶ 645 Water Line Replacement & Booster Station Rehabilitation
- ▶ Wolf Creek/Pigeon Roost Water Line Replacement
- ▶ Meathouse Water Line Replacement & Booster Pump Station Rehabilitation
- ▶ Meter Replacement Project
- ▶ Hode Water Line Replacement
- ▶ Cassell Branch Water Line Replacement & Booster Pump Station Rehabilitation
- ▶ Creek Crossing Replacement
- ▶ Valve Insertion
- ▶ Water Plant High Service Pump Replacement
- ▶ Big Lick Water Line Replacement & Booster Pump Station Rehabilitation
- ▶ Peter Cave Water Line Replacement & Booster Pump Station Rehabilitation

