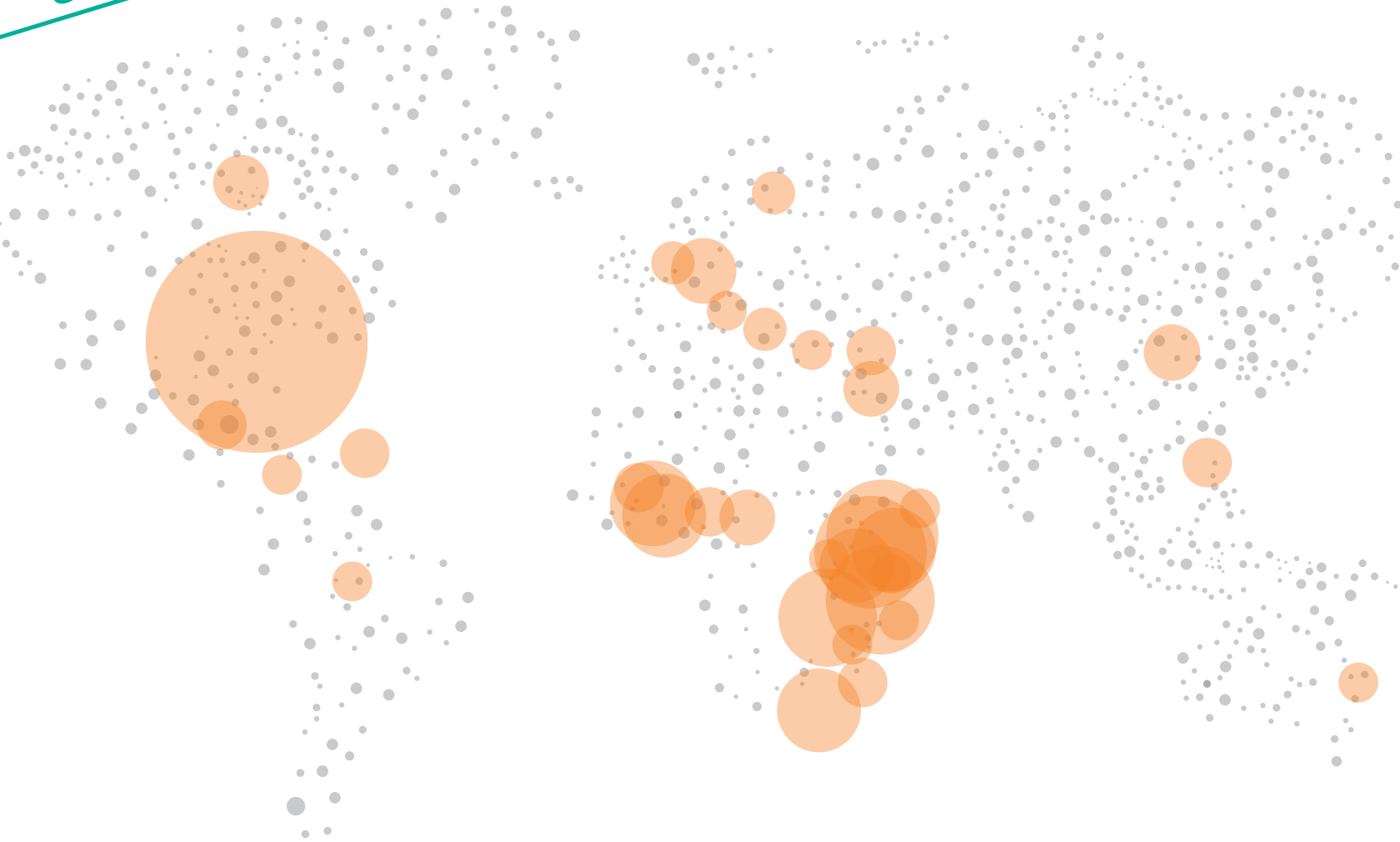


**GLOBAL
HEALTH
CORPS**



Building the next generation
of global health leaders

ANNUAL REPORT
2016 - 2017

Global Health Corps is mobilizing a global community of emerging leaders to build the movement for health equity. We are building a network of young changemakers who share a common belief: **health is a human right.**

TABLE OF CONTENTS



Letter from Our CEO	1
Who We Are	2
Our Leadership Approach	3
Our Global Reach	4
Health Leaders Rising	6
GHC in East Africa	8
GHC in Southern Africa	10
GHC in the United States	12
Looking Ahead: 2017-2018 Fellows	13
Our Partners	14
Our Team	15
Our Donors	16
Our Finances	18



Achieving health equity requires multiple skills, disciplines, and sectors... it is collective leadership that's going to make the difference.



Dr. Peter Piot, GHC Advisor & Dean of the
London School of Hygiene & Tropical Medicine

LETTER FROM OUR CEO

Dear Friend,

When I co-founded Global Health Corps (GHC) in 2009, we knew our world needed leaders who saw diversity as an asset and inclusion as a must. We knew our world needed leaders with the resilience to persevere even when the path is unclear and to inspire and mobilize others to take action even when success is not guaranteed. **Now more than ever, our world needs this type of bright, bold leadership.** In the face of new challenges, from heightened division and intolerance to climate change and resurgent disease, it is easy to give in to fear. And yet, when I look at our global community of nearly 900 young leaders, I see them doing the opposite of that. I see them living out the advice that former Surgeon General, Vice Admiral Dr. Vivek Murthy, shared with them earlier this year: “Fear is the crutch of cowardly leaders – choose to lead with love.”

Our crew of fierce advocates is implementing their vision for a better world and finding creative ways to do so despite challenges. They are banding together to come up with solutions that are moving us closer to eradicating AIDS and tuberculosis, expanding access to family planning and adequate nutrition, and making childbirth safe for all mothers. They’re making significant progress even though it doesn’t always make the headlines. **Being surrounded by a community of people who choose to lead with love in an uncertain world fills me with a hope that sustains me and restores my excitement about what our world will look like in 10, 20, or 30 years.**

This hope is particularly comforting as I prepare to transition out of my role as CEO. I know that we’ve built a strong foundation for innovation and impact thanks to generous support from Sanford Health and many others. I know that we have the systems and the people in place to take GHC, and the health equity movement, to the next level. I know that the kind of authentic, collective leadership we are building still is, and will continue to be, the greatest lever for change. And I know that our bright community of emerging leaders will keep rising, inspiring and mobilizing others, and transforming health systems around the world.

From the bottom of my heart, thank you for the role you play in building a generation of leaders who have the courage to lead with love.

With gratitude,
Barbara & the GHC team

WHO WE ARE

GLOB·AL / 'glōbel /
*Relating to the whole world;
worldwide.*

We are a community of nearly 900 from 42 countries, speaking 50 languages, and working on health issues around the world.

HEALTH / helTH /
The state of physical, mental, and social well-being, free from illness and injury.

We believe that health is a human right, and the world needs great leadership to realize that.

CORPS / kôr/
A group of people working together to achieve a goal.

We are a community of leaders who collaborate across borders and sectors to transform health systems.

How GHC Works



Step 1:
Identify high-impact health organizations with gaps that need filling



Step 2:
Competitively select exceptional young leaders with diverse skills



Step 3:
Pair them as co-fellows, one national & one international



Step 4:
Place them at an organization



Step 5:
Train them over 13 months to be health equity leaders



Step 6:
Build a global ecosystem of fellows & alumni impacting health equity

OUR LEADERSHIP APPROACH



Alumni at the 2017 East Africa Leadership Summit in Gashora, Rwanda

We believe leadership is the greatest lever for change in global health, and that's what we're building. We continuously refine our leadership curriculum based on learnings and feedback, as well as best practices and new research in the field. Four key components underpin our fellow and alumni programming, designed to develop better, more connected leaders who will transform health systems.

Authentic Leadership

We embrace vulnerability and cultivate personal resilience because fixing broken systems is long-term and difficult work. We foster a sense of purpose and an ethical orientation that guides a long career in social impact.

Collective Leadership

The impact of a well-connected leadership network is tremendous. We foster intentional community based on deep personal and professional relationships.

Systems Thinking

The complexity of health systems requires a shift in mindset: the ability to think beyond silos, understand interdependent health issues, and challenge ideas that perpetuate the status quo.

Design Thinking

We encourage feedback at all levels and foster a spirit of innovation. We frame failure as learning and one step in a long process of solving complex global health issues.

OUR GLOBAL REACH

We work intentionally within regional hubs in East and Southern Africa and the Northeastern United States. Working in proximity to each other and in concentrated areas of need allows our emerging leaders to work collectively to deliver the greatest impact. More than 80% of our alumni also continue to work in these hubs, catalyzing network impact and moving us toward a tipping point of health equity.

USA

8 years developing young leaders

39 partner organizations worked with to date

217 young leaders trained to date

Alumni chapter locations:

Baltimore
Boston
Chicago
New York
San Francisco
Washington, D.C.

ZAMBIA

6 years developing young leaders

19 partner organizations worked with to date

100 young leaders trained to date

Alumni chapter location:

Lusaka

Alumni chapter location:

Bujumbura, Burundi

MALAWI

8 years developing young leaders

24 partner organizations worked with to date

133 young leaders trained to date

Alumni chapter location:

Lilongwe

UGANDA

7 years developing young leaders

39 partner organizations worked with to date

190 young leaders trained to date

Alumni chapter location:

Kampala

RWANDA

8 years developing young leaders

21 partner organizations worked with to date

170 young leaders trained to date

Alumni chapter location:

Kigali

- Alumni chapters
- Alumni
- Fellowship placements

HEALTH LEADERSHIP RISING

We are proud to have built the most diverse and collaborative network of global health leaders in the world. Our nearly 800 alumni hail from 39 countries and represent myriad sectors and skillsets. As they continue rising into positions of influence across the global health ecosystem, we see immediate and potential impact for stronger and more equitable health systems. Our alumni programming harnesses this potential and is designed to foster effective leadership at the individual and collective levels.



Alumni on Capitol Hill in D.C. advocating for sustained global health funding



Assumpta Nantume (U.S., 2016-2017) delivers a talk at the USA Leadership Summit

Developing really great leaders.

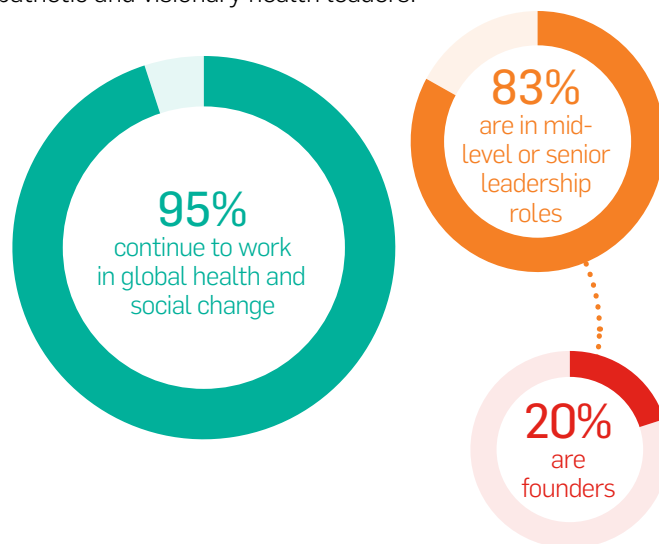
The fellowship year is a launch pad for a life of transformative leadership. As our alumni advance in their careers – from professors to CEOs – we support their continued emergence as empathetic and visionary health leaders.

Training Effective Managers

Great leaders are strong managers. **We offer one-on-one management coaching and mentoring** to alumni at various levels of leadership. This year, **we partnered with McKinsey Academy to offer a six-week intensive online management training course** for alumni in the U.S. and across Africa.

Building Alumni Voices

Great leaders use their voices to inspire and mobilize change. **We work to get our alumni on stage and on the mic around the world** and we support the **publication of their writing in outlets such as Devex, AllAfrica, and The Lancet**. We **coach them to be strong, authentic voices for health equity**, training them as advocates and orators. Earlier this year, we partnered with Friends of the Global Fight against AIDS, TB, and Malaria on a lobby training and day of visits with U.S. lawmakers to emphasize the importance of global health financing.



Uganda alumni at the Annual General Meeting to elect new chapter Leadership



WOMEN LEADERS IN GLOBAL HEALTH

AT STANFORD UNIVERSITY
GLOBAL HEALTH



Alumni at the inaugural Women Leaders in Global Health Conference at Stanford University

Fostering a tight-knit and global leadership community.

Our model fosters deep personal and professional relationships among fellows that strengthen and expand as alumni. Building a powerful network that facilitates innovative collaboration among leaders with diverse backgrounds is critical to transforming health systems.

131

served as formal
mentors for
fellows this year

64%

work closely
with other
alumni beyond
the fellowship
year

85%

of African
alumni continue
to work in
Africa

Saturating Regional Hubs

We **convene alumni to connect, share resources, and engage in strategic thinking and network building sessions at our regional Leadership Summits.** We also support our **11 Alumni Chapters across the U.S. and Africa,** which serve as formal leadership structures for alumni engagement.

Cultivating Collaboration

Our alumni are **creative-minded entrepreneurs committed to solving complex health challenges.** We aim to foster this spirit, seeking new platforms for collaboration and co-creation to move the needle on health equity. This year, we partnered with the nonprofit organization D-Prize to award \$15,000 to **two cross-cultural, cross-sector teams of alumni who are now rolling out health initiatives** in Pakistan and Uganda.

Our fellows in Rwanda work in pairs with the Ministry of Health (MOH) and a wide range of NGOs to confront new challenges such as preventing hypertension and improving food security in the wake of climate change. Our growing and highly engaged alumni network is leading the way toward a healthier Rwanda. This year, they partnered with the National Center for Blood Transfusion to coordinate a countrywide outreach campaign to increase blood donations.



Co-fellow Spotlight: Health Development Initiative (HDI)
Egide Muhire, Monitoring, Evaluation and Research Officer
Teena Cherian, Monitoring, Evaluation and Research Officer

Egide and Teena delivered impact as part of HDI's work to increase healthcare access through a community-centered, rights-based approach. **They helped forge a Ministry partnership to prevent tuberculosis (TB) among high-risk populations and coordinated TB prevention sessions for 500+ patients in five hospitals countrywide.** They also worked to develop HDI's first electronic database for monitoring and evaluating programs. Post-fellowship, Egide is working to found a global health research firm in Kigali, while Teena is conducting global health research at Harvard Medical School in Boston.



After every GHC training, I wanted to scream 'I want to be like you when I grow older!' One of the key lessons still guiding me is that jumping into new challenges helps us grow into the leaders we want to be.



Alum Spotlight: Soline Mugeni
2009-2010 fellow, Clinton Health Access Initiative (CHAI)
Now: Senior Program Manager, CHAI

When Soline left Rwanda to pursue a master's degree in Canada, her goal was to return to her home country to advance population health. In 2009, she joined GHC's inaugural class of 22 fellows, working on hepatitis and TB prevention as a Program Consultant with CHAI Rwanda. **Since then, Soline has risen through the ranks at CHAI, now overseeing all of the organization's health programs and relationships with the Rwandan government and other partners.** Soline has co-authored various publications on Rwanda's health system with leading global health figures including Dr. Paul Farmer and Didi Bertrand.

In Uganda, pairs of fellows work with government and NGO partners on issues ranging from HIV and TB prevention to promoting menstrual hygiene. Our vibrant alumni community continues to move the needle on health equity. This year, they spearheaded an advocacy campaign to expand youth access to family planning and provided training on sexual and reproductive health for residents of Kaptwaka refugee camp.

Co-fellow Spotlight: Conservation Through Public Health (CTPH)
Shaban Senyange, Impact and Learning Coordinator
Amy Roll, Advocacy and Partnerships Coordinator



Shaban and Amy delivered impact supporting CTPH's work to prevent and control disease transmission between wildlife and the communities living near Bwindi National Park in Southwestern Uganda. **They built the capacity of 100+ local teams to coordinate health outreach and conservation efforts in the area and secured national TV coverage to raise the visibility of CTPH's work.** They also worked with the Ministry of Health to integrate an environmental health approach into national strategic health plans. Post-fellowship, Amy is now researching biodiversity health challenges as an MPH student at the University of Washington. Shaban is working in Kampala as an Eco-zone TV Producer, raising funds and awareness for public health initiatives.



Alum Spotlight: Dinnah Nabwire
2015-2016 fellow, Marie Stopes International
Now: Learning Advisor, Transcultural Psychosocial Organization

Dinnah started her career in community development in rural Uganda. She discovered her passion for health equity when she joined GHC as a fellow to advocate for global family planning investments through engagements with the United Nations Foundation and U.S. policymakers. **Upon her return to Kampala after her fellowship year, she joined forces with other GHC alumni to launch Voices for Health Uganda, a platform for engaging youth in sexual and reproductive health decisions.** Dinnah currently works to promote women's health and rights in over 30 districts in Uganda as a Learning Advisor with Transcultural Psychosocial Organization.



My GHC fellowship helped me refine my career path. I came to appreciate that sexual and reproductive health is central to all development interventions.



In Malawi, co-fellow pairs work within the Ministry of Health (MOH) and a range of NGOs around the country on pressing issues such as food security and maternal health. Our growing alumni network continues to rise, dedicated to shaping a bright future for the country. This year, they organized a community festival to meet local residents' health needs and spark dialogue on the way forward for Malawi's health sector.



Co-fellow Spotlight: mothers2mothers (m2m)
Nicole Carbone, Project Officer
Wezi Thindwa, Project Officer

Wezi and Nicole advanced m2m's efforts to help HIV+ women across Malawi access and stay on treatment and ensure that they give birth to HIV- babies (PMTCT). **They delivered impact by training a network of "Mentor Mothers,"** HIV+ women who provide a range of health and psychosocial services to ensure other HIV+ women live healthy, empowered lives. **They also created sustainable client and data management tools and implemented workshops on HIV and nutrition.** Post-fellowship, Nicole is working with UNC Project Malawi to conduct research on PMTCT while Wezi was hired on with m2m and promoted to Project Manager, where she continues the work she started during the fellowship.



The GHC community is so important to me. It's people who are linked together by social ties, share a common goal, and work together to improve quality of life.



Alum Spotlight: Dorothy Mkwezalamba
2014-2015 fellow, mothers2mothers (m2m)
Now: Pediatric HIV Clinical Officer, Baylor College of Medicine Children's Foundation Malawi

Growing up in Blantyre, Dorothy developed a passion for public health that led her to become a clinician. **She loved treating individuals, but joined GHC to build her skills in program design to strengthen the broader health system and thrived in her role designing and implementing programs for HIV+ mothers as a Program Officer at m2m.** She now works at Baylor College of Medicine Children's Foundation Malawi as a Pediatric HIV Clinical Officer, where she combines her expertise in treating patients with her passion for coordinating programs that reach entire communities.

Fellows in Zambia work in pairs within the Ministry of Health (MOH) and NGOs nationwide to address ongoing challenges such as reducing the malaria burden and supporting community health workers. As our community grows, alumni are increasingly stepping up to help lead the country toward a healthier, more equitable future. This year, they coordinated a management training to build the capacity of other young global health practitioners.

Co-fellow Spotlight: PATH MACEPA
Chipasha Mwansa, Malaria Surveillance Officer
Stacey Naggiar, Advocacy and Communications Officer



Chipasha and Stacey supported PATH MACEPA's efforts to eradicate malaria through education and expanded access to health services throughout Zambia. **They delivered impact by analyzing field surveillance data to inform intervention strategies, developing training manuals, and leading workshops for 500+ community health workers on malaria case management.** They also produced films and materials to raise global awareness of malaria elimination in Zambia. Stacey is now bringing unheard health and social justice stories to a global audience as a producer for HBO's Vice News Tonight in New York and Chipasha is a sexual health consultant in Lusaka.



Alum Spotlight: Mwiche Siame
2012-2013 fellow, Ministry of Health (MOH) Zambia
Now: Strategic Information Officer, MOH Zambia

Mwiche grew up in the small town of Kitwe, Zambia. She studied biology but didn't find lab work fulfilling. **When she joined GHC as a fellow at the Zambia MOH in 2012, she felt that she'd finally found her place in the health equity movement.** Following her fellowship, she stayed at the MOH, where she now works as a Strategic Information Officer in the Department of Policy and Planning. As she explains, "Data collection and analysis is the basis for decision making and policy formulation in health."



I struggled to find my place. I decided to become a GHC fellow and then it became very clear that I needed to get back to my first love, which is working in HIV from a public health angle.



GHC IN THE UNITED STATES

In the U.S., American and non-American fellows work in pairs with NGOs, city health departments, and local community-based providers in the northeast to reduce longstanding health inequities. Their work ranges from advocating for the health needs of people experiencing homelessness to promoting children's nutrition programs. Our U.S.-based alumni are a tight-knit community highly engaged in policy and advocacy efforts across the country. This year, they met with lawmakers in Washington, D.C. to discuss the importance of maintaining global health funding.



Co-fellow Spotlight: HIPS, Washington, D.C.
Faith Mulungi, Case Management Specialist
Anthony Almazan, Systems Coordinator

Anthony and Faith supported the work of HIPS, a community-based clinic serving individuals and communities impacted by sexual exchange and drug use in Washington, D.C. **They delivered impact by leading research projects on citywide housing programs, establishing a task force on housing policy, managing hundreds of client cases, and advocating for HIPS clients experiencing homelessness.** They also designed new electronic data systems that helped bring in more than \$225,000 in grants. Post-fellowship, Faith is providing therapy for clients dealing with substance abuse, depression, and trauma in her native Uganda. Anthony is in his first year at Harvard Medical School.



Through GHC, I learned that the world is bigger than my own, that I didn't need to be a physician to make an impact in health, and that I could meld my experiences to provide a unique perspective and effect change.



Alum Spotlight: Jane Chung
2011-2012 fellow, Covenant House
Now: Director of Innovation and Research
Implementation, AltaMed Health Services
Corporation

A longtime social justice advocate, Jane wasn't sure if she could have an impactful career in health without a medical degree until she joined GHC in 2011. In her role as a Health Counselor at Covenant House in Newark, NJ, she realized that "you don't have to leave your country to find yourself in another world." Following her fellowship year, she continued to work on improving access to quality healthcare in the U.S. in project management roles with Kaiser Permanente and Jenser + Partners in Los Angeles. Jane is now the Director of Innovation and Research Implementation at AltaMed Health Services Corporation, one of America's largest independent Federally Qualified Health Centers.

LOOKING AHEAD

Our 2017-2018 fellow class at Training Institute at Yale University

Our stellar 2017-2018 cohort of **140 fellows** from around the world is working with **64 placement organizations** in **Malawi, Rwanda, Uganda, the U.S., and Zambia** this year.

42

languages
spoken

49%

joined GHC with a
master's or other
advanced degree

43%

are African
nationals

from
16
countries

79%

are non-white

71%

are female

25.8

average age

OUR PARTNERS

We partner with government agencies and a wide range of NGOs working on the front lines of health equity with real-time capacity gaps filled by our fellows' diverse skillsets. We have seen an uptick in requests for GHC fellows from health organizations worldwide. We select partners through a competitive process based on mission alignment and current gaps in the health sector. Special thank you to our 2016-2017 partner organizations:

Malawi

Art and Global Health Center Africa
Christian Health Association of Malawi
Clinton Development Initiative
Dignitas International
Elizabeth Glaser Pediatric AIDS Foundation
Emmanuel International Malawi
mothers2mothers
Partners In Health
Save the Children

Rwanda

African Evangelistic Enterprise Rwanda
CARE International
Clinton Health Access Initiative
Gardens for Health International
Health Builders
Health Development Initiative
MASS Design Group
Ministry of Health Rwanda
Partners In Health
Rwanda Zambia HIV Research Group
The Ihangane Project
University of Global Health Equity

Uganda

Alive Medical Services
Baylor College of Med. – Children's Foundation Uganda
Clinton Health Access Initiative
Conservation Through Public Health
Days for Girls
Elizabeth Glaser Pediatric AIDS Foundation
Foundation for Community Empowerment
Innovation Program for Community Transformation
IntraHealth International
Jhpiego
LifeNet International
Ministry of Health Uganda

Nyaka AIDS Foundation
Reach Out Mbuya Parish HIV/AIDS Initiative
Save the Mothers
Spark MicroGrants

United States

1,000 Days
ARCHIVE Global
Boston Public Health Commission
Boys & Girls Club of Newark
BRAC USA
Children's Health Fund
Covenant House New Jersey
Gardens for Health International
Global Health Council
HIPS
Housing Works
Inter-American Development Bank
IntraHealth International
New York City Department of Health and Mental Hygiene
Planned Parenthood Federation of America
Possible
The Grassroot Project
Together for Girls/UNAIDS
Vecna Cares Charitable Trust

Zambia

Akros
Catholic Medical Mission Board
Centre for Infectious Disease Research in Zambia
Concern Worldwide
Ministry of Health Zambia
PATH
Population Council
Rwanda Zambia HIV Research Group
Save the Children
Zambia Center for Applied Health Research and Development (ZCAHRD)

OUR TEAM

Our global team is passionate about developing the next generation of leaders, and it shows. We work across five countries and two continents to power the movement for health equity every day.

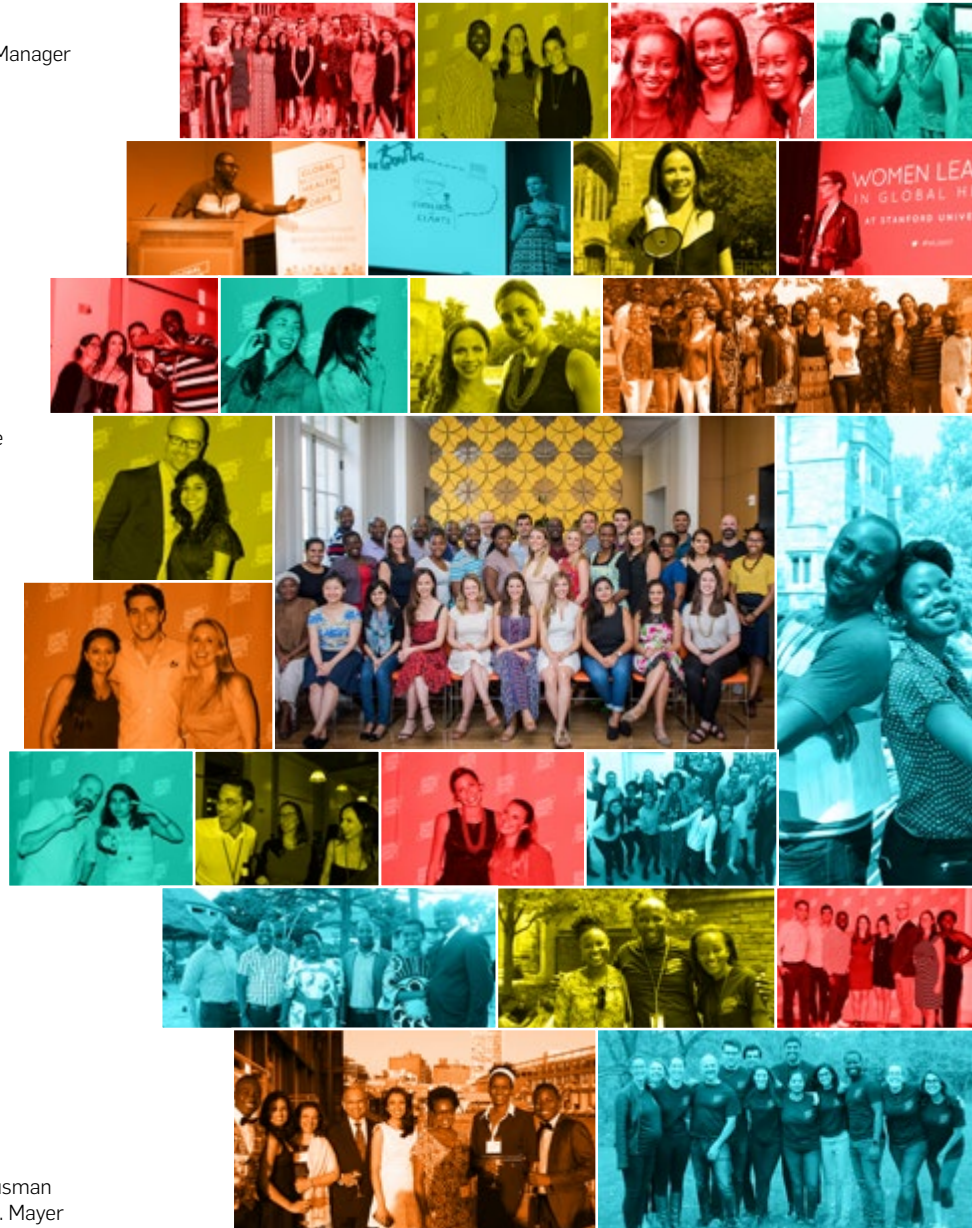
Alex Muzinda, Zambia Facilities Proprietor
Alida Bivegete, Rwanda Operations Senior Associate
Anita Namuyaba, Uganda Operations Senior Associate
Armand Giramahoro, Uganda Operations Manager/Burundi Country Manager
Barbara Bush, CEO and Co-Founder
Brian Ssenoga, Alumni Program Manager
Brittany Cesarini, Advocacy and Communications Senior Associate
Bryan Dwyer, Director of Partnerships
Caroline Numuhire, Rwanda Program Senior Associate
Carrie Rubury, Alumni Program Coordinator
Diana Nsubuga, Uganda Country Manager
Elizabeth Jones, Strategic Aide to the CEO
Elizabeth Kibabu, Africa Regional Director
Eric Chiyombwe, Zambia Country Manager
Gwen Hopkins, Admissions and Operations Manager
Hannah Taylor, US Country Manager
Heather Anderson, Senior Vice President of Programs
Imran Nadaph, US Program Manager
Isabel Kumwembe, Malawi Program and Operations Senior Associate
Jacob Gomez, Impact and Learning Manager
Jacqui Brown, Operations Senior Coordinator
James Mayinja, Uganda Facilities Proprietor
Jean Rene Shema, Rwanda Country Director
Jeremy Harding, Strategic Partnerships Assistant
Jess Mack, Senior Director of Advocacy and Communications
Jessica Wahlstrom, Director of Professional Development
John Cape, Director of Programs
Joseph Elias, Director of Professional Development
Lena Derisavifard, Global Talent Senior Associate
Mamata Venkat, US Operations Associate
Martin Kanjadza, Malawi Country Manager
Meghan Kappus, Strategic Partnerships Director
Mera Boulus, Special Assistant to the CEO
Mpindi Abaas, Uganda Program Manager
Naeha Vora, Admissions and Operations Coordinator
Namuyamba Muyunda, Zambia Program and Operations Coordinator
Nicholas Setteducato, Global Talent Manager
Russatta Buford, Vice President of Operations
Sarah Endres, Program Coordinator
Sheila Sibajene, Zambia Program and Operations Manager
Shivani Mulji, Finance and Operations Associate
Simon Simkoko, Malawi Operations Manager
Toyosi Olowoyeye, Program Senior Associate
Victoria Choong, Finance and Operations Manager
Yael Silverstein, Senior Director of Global Talent

Board of Directors

Barbara Bush
Biju Mohandas
Dave Ryan
Jonathan Hughes

Michael Park
Dr. Rajesh Gupta
Shamina Singh
Sujoy Jaswa

Vicky Hausman
William E. Mayer
William H. Roedy



OUR DONORS

A huge thank you for your support, your partnership, and your generosity! We couldn't develop the next generation of global health leaders without you.

\$1,000,000+

Denny Sanford
Sanford Health

\$250,000+

Bill & Melinda Gates Foundation
Caerus Foundation
Global Health Fellows Program II
Max M. & Marjorie S. Fisher Foundation
Robertson Foundation
William & Flora Hewlett Foundation

\$100,000+

AbbVie Foundation
Anonymous
Bank of America Charitable Foundation
Bloomberg Philanthropies
Bohemian Foundation
Caris Foundation
DAK Foundation
DSM
Exxon Mobil Foundation
Guggenheim Partners
Johnson & Johnson
The Marilyn & Jeffrey Katzenberg Foundation
Mulago Foundation
Rockefeller Foundation
S. Javaid Anwar
Segal Family Foundation
Silicon Valley Community Foundation
Starkey Hearing Foundation

\$50,000+

Abbott Fund
Bristol-Myers Squibb Foundation
Capital for Good
Child Relief International
ELMA Philanthropies
Imago Dei Fund
The Khoury Foundation
Lyda Hill Foundation
Rees-Jones Foundation
Sandi Young

\$25,000+

American Express Foundation
BDT Capital LLC
Carolyn Lacy Miller Charitable Fund
David B. Miller Foundation
Diamond Family Foundation
Laurie M. Tisch Illumination Fund
Nancy and Randy Best Foundation
President George W. Bush

Rachael Dedman
Rebecca and Bill Sanders
Ruth Altshuler
Sujay Jaswa
Turrell Fund

\$10,000+

Edward W. Rose III Family Fund of the Dallas Foundation
George Lee
Hauptman Family Foundation
Jonathan Hughes
Joyce Lacerte
Phoebe Taubman and Craig Nerenberg
Thomas and JaMel Perkins
William E. Mayer

\$5,000+

Annie Dickerson
Carolyn Hynes
Claire Dewar
Friedman Family Foundation
The Ina Kay Foundation
Jonathan Bush Jr.
Ken Mehlman
Lana Andrews
Stapleton Charitable Trust
Victoria Hausman

\$1,000+

Adam Grant
Barbara Jones Charitable Fund
Derek Anderson
Dolores Blum
Donald L. Evans
Elise Jordan
Frank Williams Foundation
The Gerson Lehrman Group
Horchow Family
James Shea
Kate Saunders
Laura Samberg
Marvin Bush
Mary John Frank
Michael Park
Rugged Elegance Foundation
Shamina Singh
Sheila Patel
Stephen Emery
Tom & Andi Bernstein
William Sledge

In-kind contributions

Chelsea Piers
Kaye Scholer
SYPartners
Yale University Office of the President



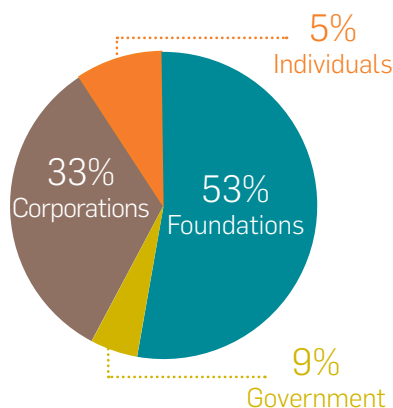
We need a generation of bold leaders committed to creating a world where health is the birthright of all people. GHC is cultivating these leaders and developing a community where they can learn, grow, and thrive. This work could not be more urgent. GHC is shaping the future of global health for the better.



Dr. Vivek Murthy, 19th Surgeon General of the United States

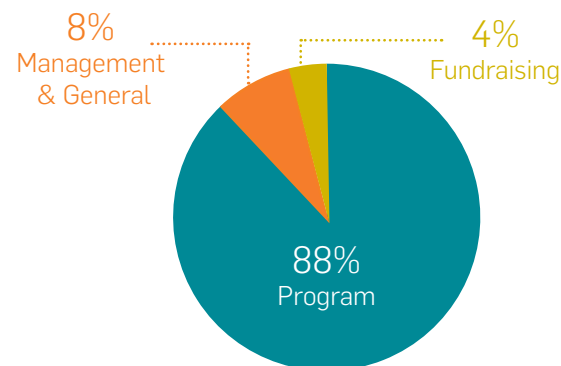
OUR FINANCES

FY17 Funding



Foundations	\$ 3,402,563
Corporations	\$ 2,101,350
Government	\$ 590,565
Individuals	\$ 352,140

FY17 Expenses



In addition to the \$4.6 million that Global Health Corps devoted to the support of fellows, our partner organizations contributed another \$2.1 million.

Revenues, gains and other support

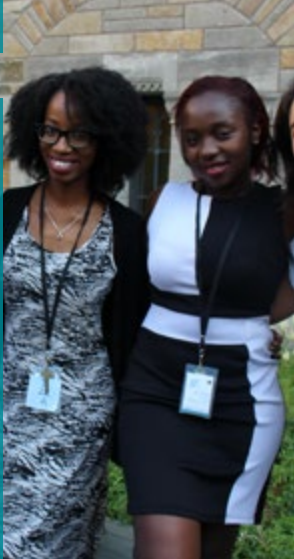
Public support and contributions	\$	5,856,053
Government grants	\$	590,565
Fees and other revenue	\$	30,534
Total revenues, gains and other support	\$	6,477,151

Expenses

Program services		
Fellow support & development	\$	4,589,652
Alumni support & development	\$	802,337
Total program services	\$	5,391,989
Supporting services		
Management and general	\$	492,363
Fundraising	\$	237,907
Total supporting services	\$	730,270
Total operating expenses	\$	6,122,259
Change in net assets from operations	\$	354,893
Non-operating adjustments to net assets	\$	(1,267,472)
Change in net assets	\$	(912,579)
Net assets, beginning of year	\$	7,634,287
Net assets, end of year	\$	6,721,707



We love our community.
Thank you for helping us build
the next generation of global
health leaders.



Our 2016-2017 class at End of Year Retreat in Tanzania

The future looks bright!



info@ghcorps.org



www.ghcorps.org



[@ghcorps](https://twitter.com/ghcorps)



[@GlobalHealthCorps](https://www.facebook.com/GlobalHealthCorps)



[@GlobalHealthCorps](https://www.instagram.com/GlobalHealthCorps)



medium.com/amplify