

[Terminal]

Computer menu

Brings up documentation (currently OLD documentation)

Brings up configuration file

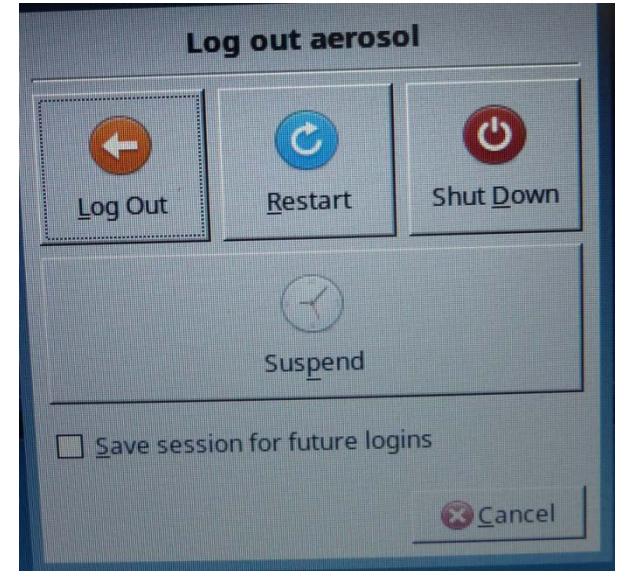
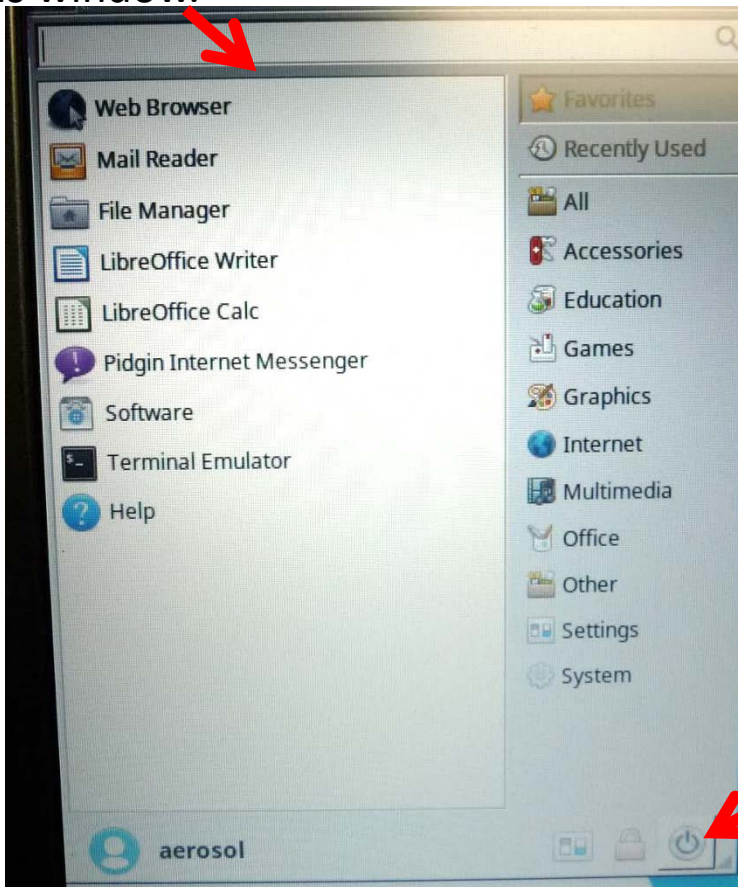
Brings up cpd client – Blue Screen

Brings up cpx3 – data plots

# Shutting down/Rebooting the computer

There is no longer a desktop icon to shutdown/restart the computer. Rather you need to use the computer menu.

(1) Open the 'computer menu' using the tiny icon in the upper left corner of the desktop (see previous page). That will bring up this window.

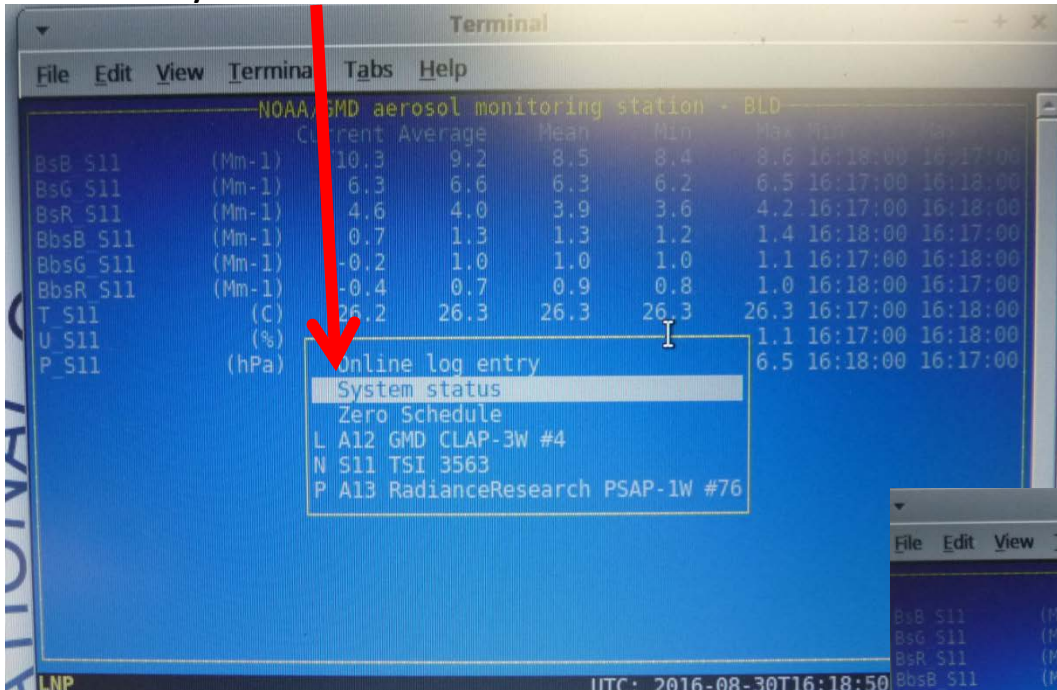


(3) Clicking on the power button will bring up this window. Choose 'Restart' if you want to restart the computer. Choose 'Shut Down' to shut down the computer.

(2) Click on the power button in the lower left.

# Restarting CPD

(1) Open main menu in cpd client and select 'system status'



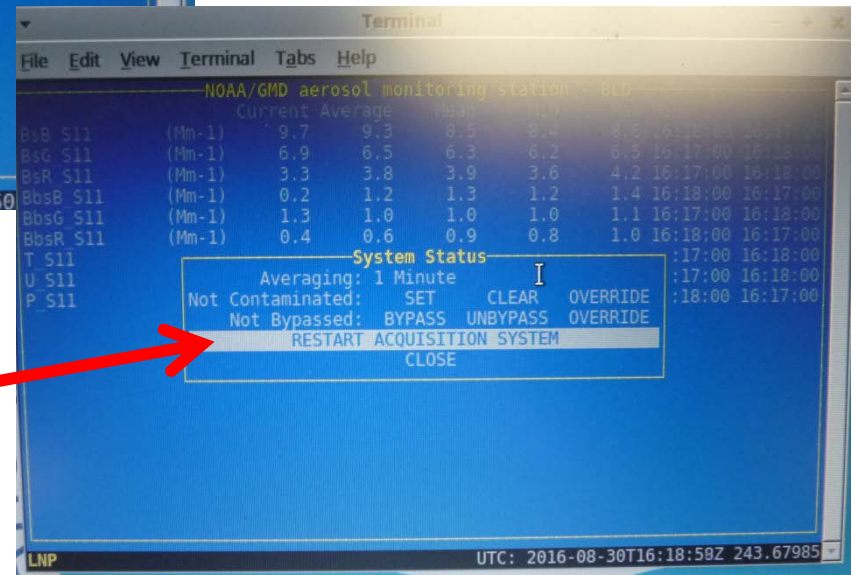
The terminal window displays a table of aerosol monitoring data. A red arrow points to the 'System status' option in the menu.

		Current	Average	Mean	Min	Max	Min	Max
BsB S11	(Mm-1)	10.3	9.2	8.5	8.4	8.6	16:18:00	16:17:00
BsG S11	(Mm-1)	6.3	6.6	6.3	6.2	6.5	16:17:00	16:18:00
BsR S11	(Mm-1)	4.6	4.0	3.9	3.6	4.2	16:17:00	16:18:00
BbsB S11	(Mm-1)	0.7	1.3	1.3	1.2	1.4	16:18:00	16:17:00
BbsG S11	(Mm-1)	-0.2	1.0	1.0	1.0	1.1	16:17:00	16:18:00
BbsR S11	(Mm-1)	-0.4	0.7	0.9	0.8	1.0	16:18:00	16:17:00
T S11	(C)	26.2	26.3	26.3	26.3	26.3	16:17:00	16:18:00
U S11	(%)					1.1	16:17:00	16:18:00
P S11	(hPa)					6.5	16:18:00	16:17:00

```
Online log entry
System status
Zero Schedule
L A12 GMD CLAP-3W #4
N S11 TSI 3563
P A13 RadianceResearch PSAP-1W #76
```

There is no longer a desktop icon to restart CPD. Rather you need to use the menu options in cpd client.

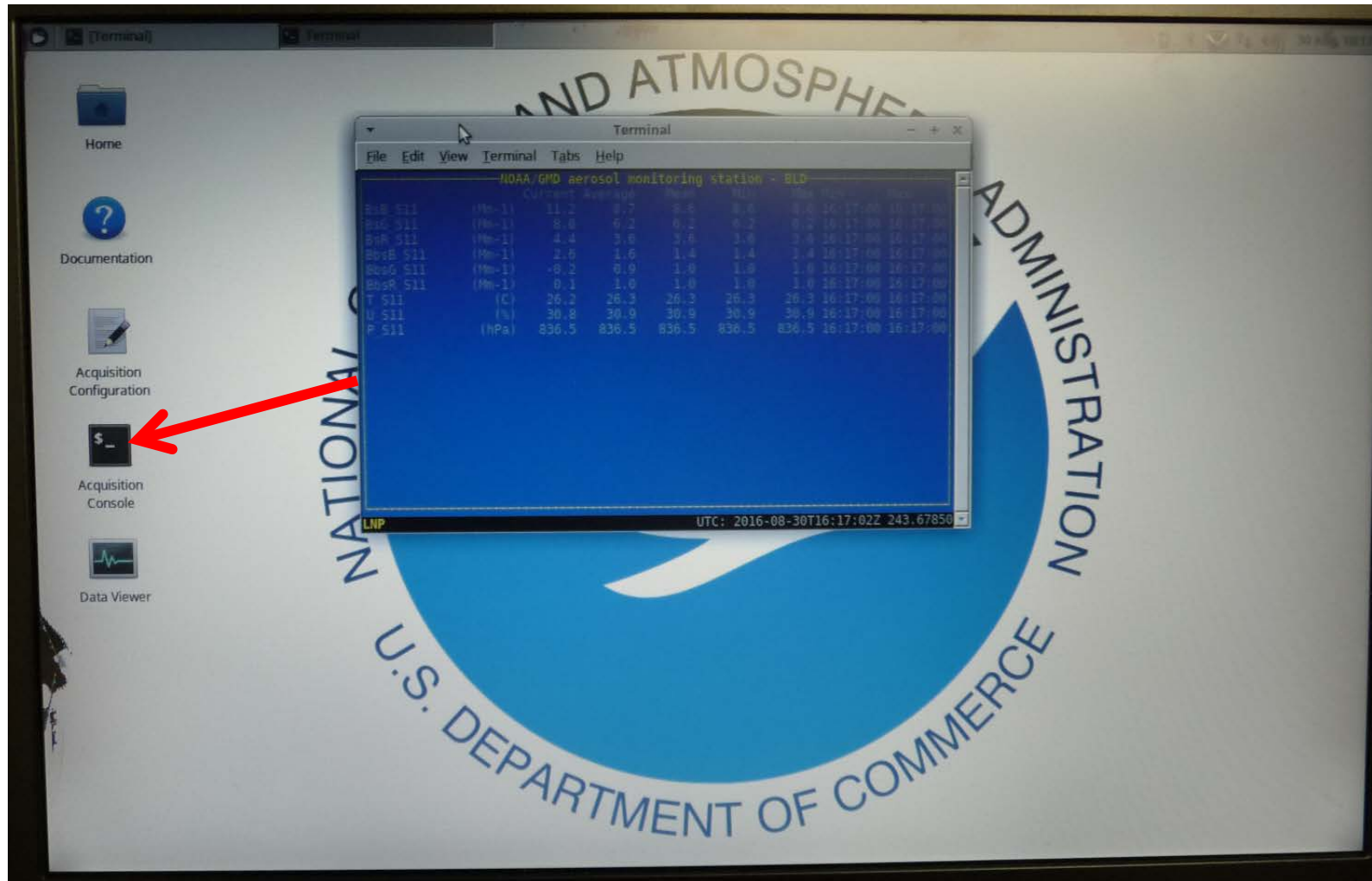
(2) In system status window, select 'RESTART ACQUISITION SYSTEM'

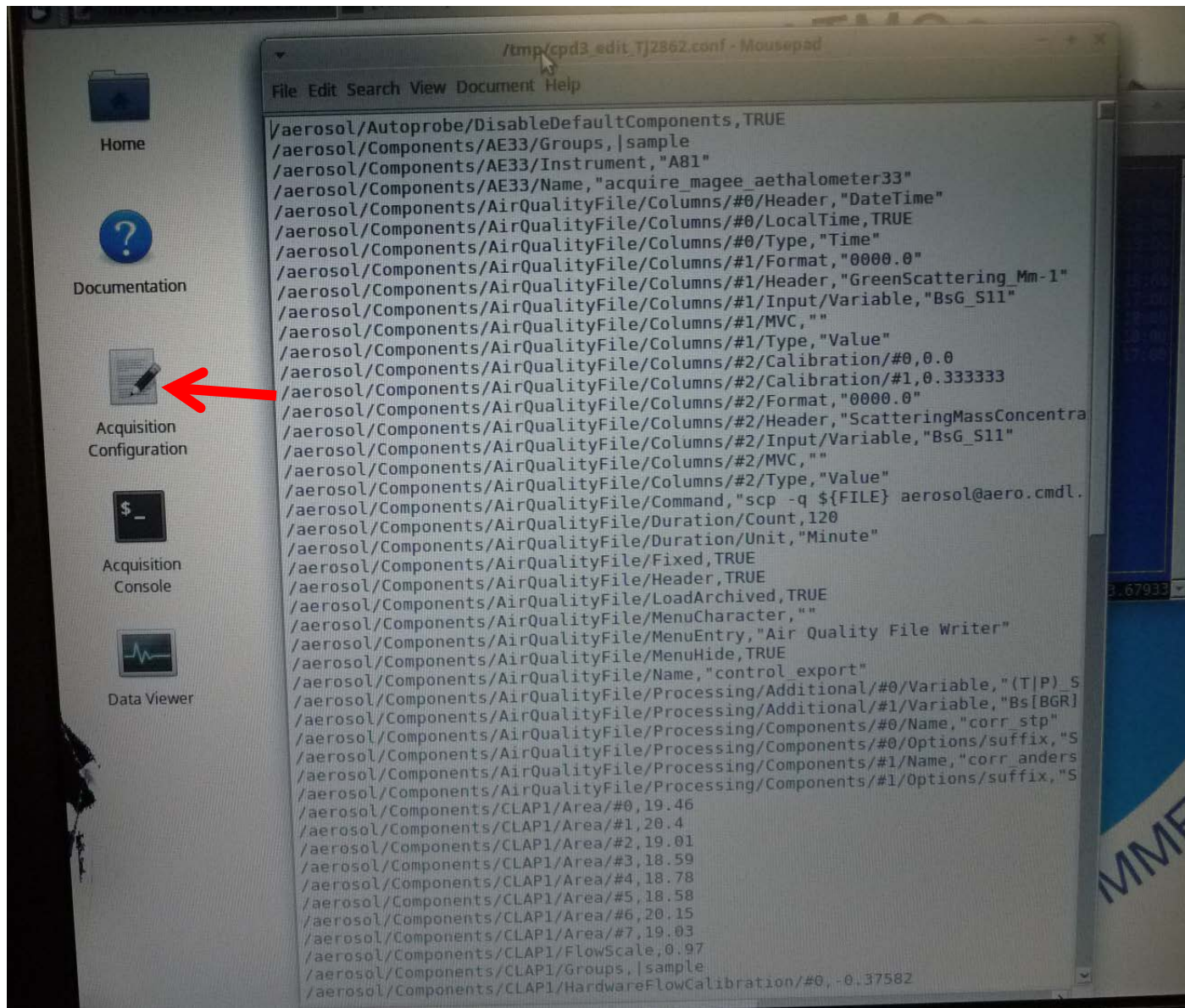


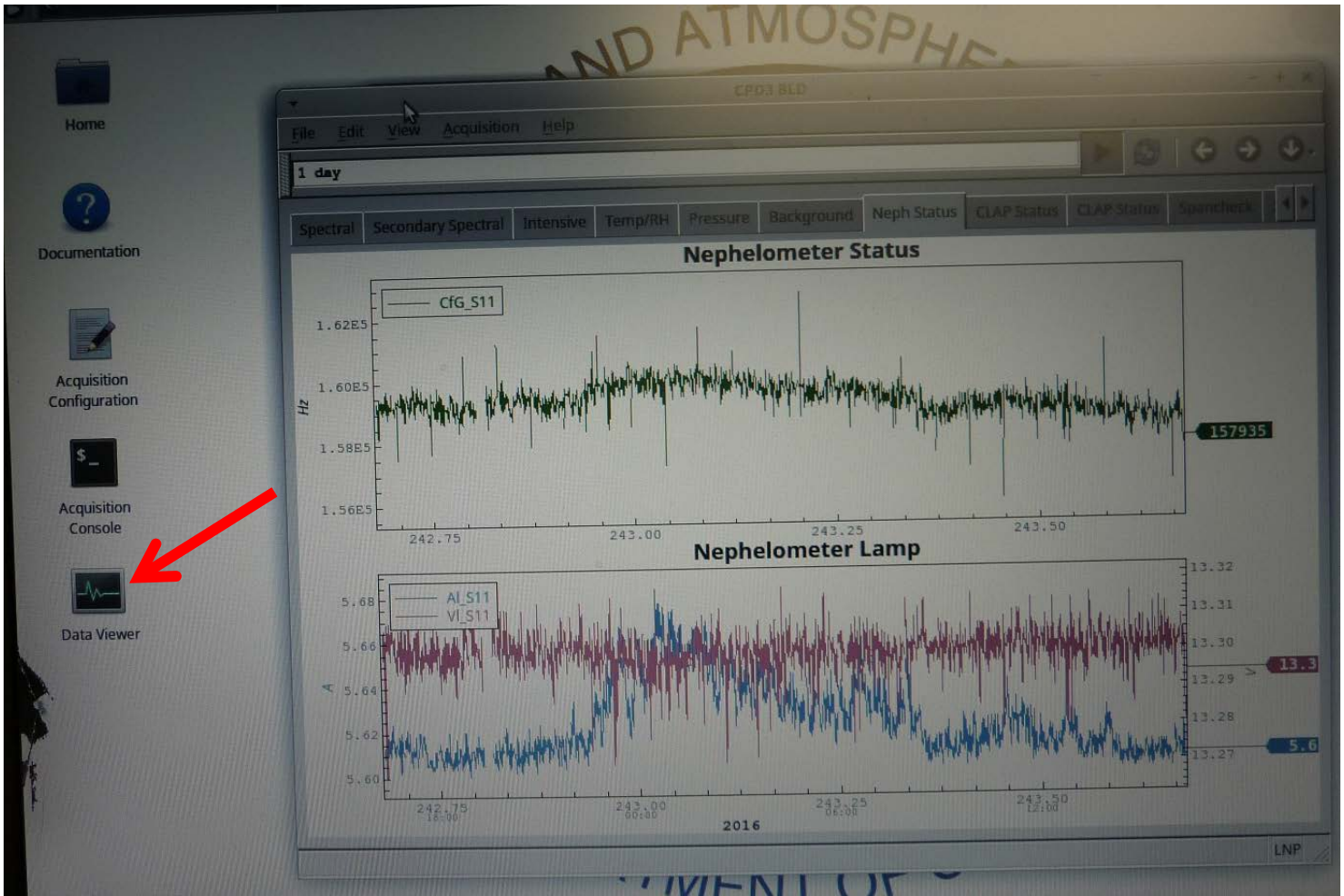
The terminal window displays the 'System Status' menu. A red arrow points to the 'RESTART ACQUISITION SYSTEM' option.

```
System Status
Averaging: 1 Minute
Not Contaminated: SET CLEAR OVERRIDE
Not Bypassed: BYPASS UNBYPASS OVERRIDE
RESTART ACQUISITION SYSTEM
CLOSE
```

This will bring up a window with the options 'RESTART SYSTEM' or 'ABORT'. Choose 'RESTART SYSTEM'







There is no longer a send data icon on the cpd3 desktop. You can manually run "da.transfer.upload" in a terminal for a similar effect and it will give some feedback about the actual transfer status.

The data files that have been created but not yet transferred are in:  
`/var/lib/cpd3/send`.

The data files that have completed sending are in:  
`/var/lib/cpd3/sent` .