

Supplement of Hydrol. Earth Syst. Sci., 19, 3489–3503, 2015  
<http://www.hydrol-earth-syst-sci.net/19/3489/2015/>  
doi:10.5194/hess-19-3489-2015-supplement  
© Author(s) 2015. CC Attribution 3.0 License.



*Supplement of*

## **Characterization of precipitation product errors across the United States using multiplicative triple collocation**

**S. H. Alemohammad et al.**

*Correspondence to:* S. H. Alemohammad (hamed\_al@mit.edu)

The copyright of individual parts of the supplement might differ from the CC-BY 3.0 licence.

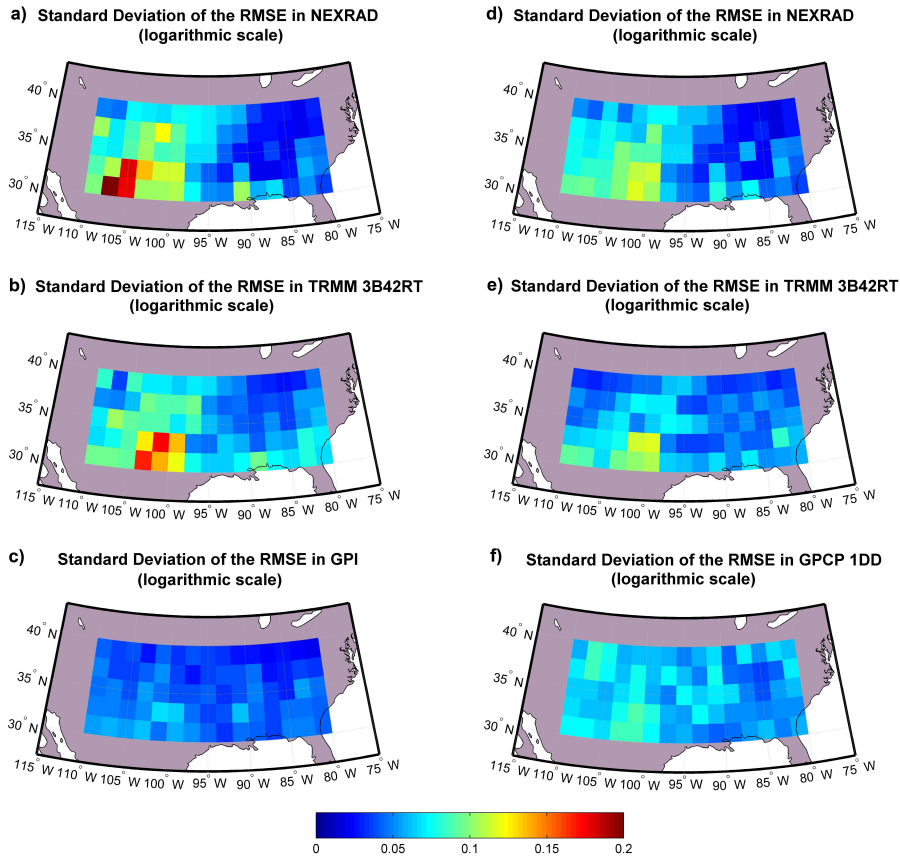


Figure S1: Standard deviation of RMSE estimates of the precipitation rate (derived from bootstrap simulations) in each product. The left column shows the results for triplets in group 1, and the right column shows the results for triplets in group 2.

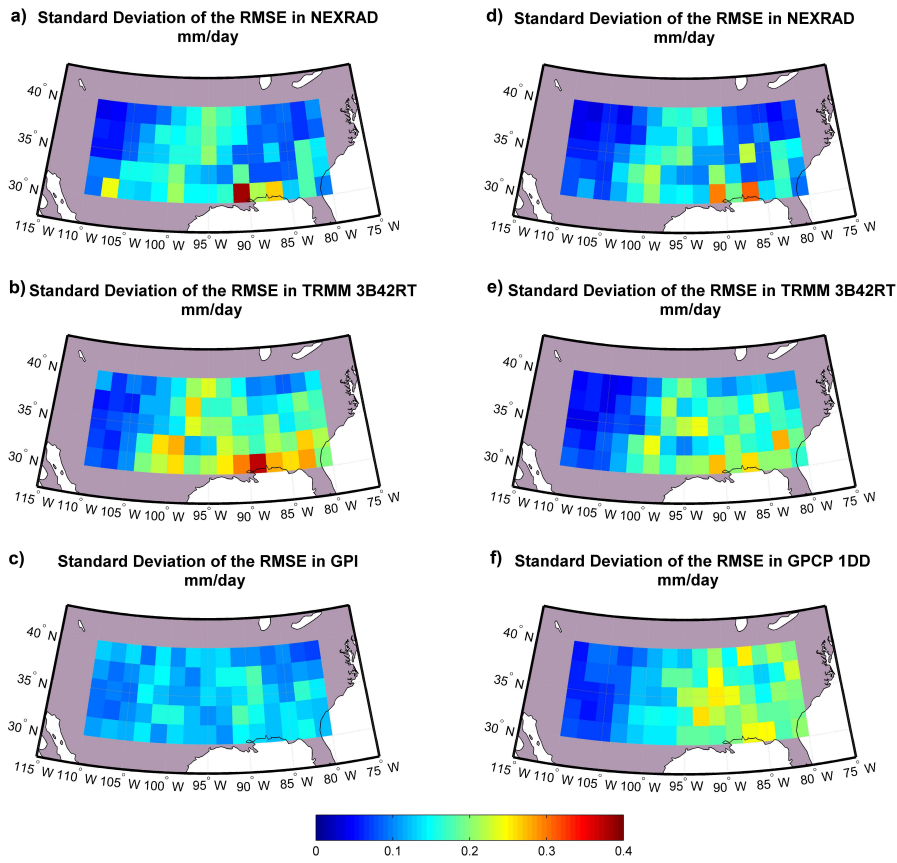


Figure S2: Similar to Figure S1, but in units of mm/day.

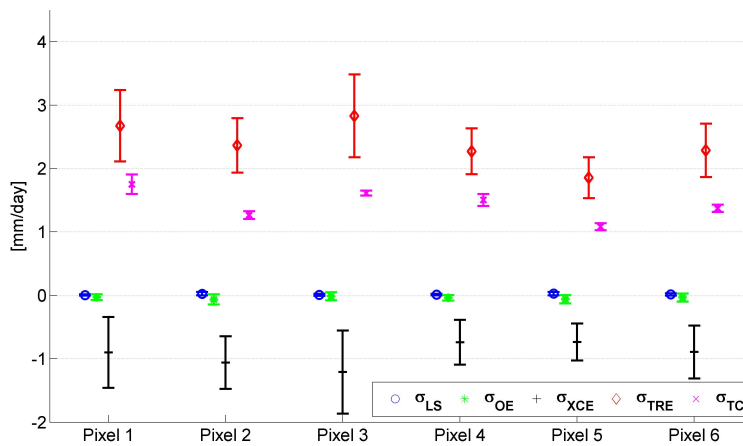


Figure S3: Decomposition of TC estimate of the RMSE of TRMM 3B42RT product across six pixels.

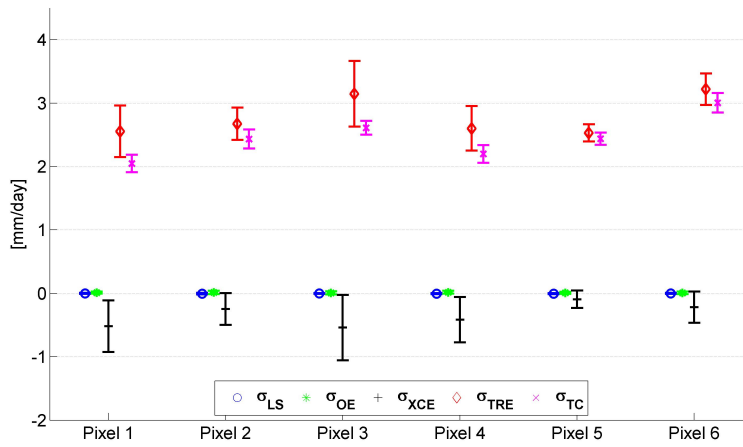


Figure S4: Decomposition of TC estimate of the RMSE of GPCP 1DD product across six pixels.

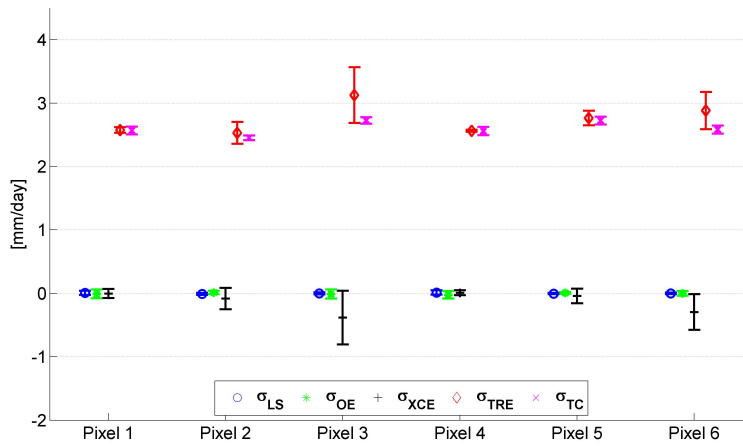


Figure S5: Decomposition of TC estimate of the RMSE of GPI product across six pixels.

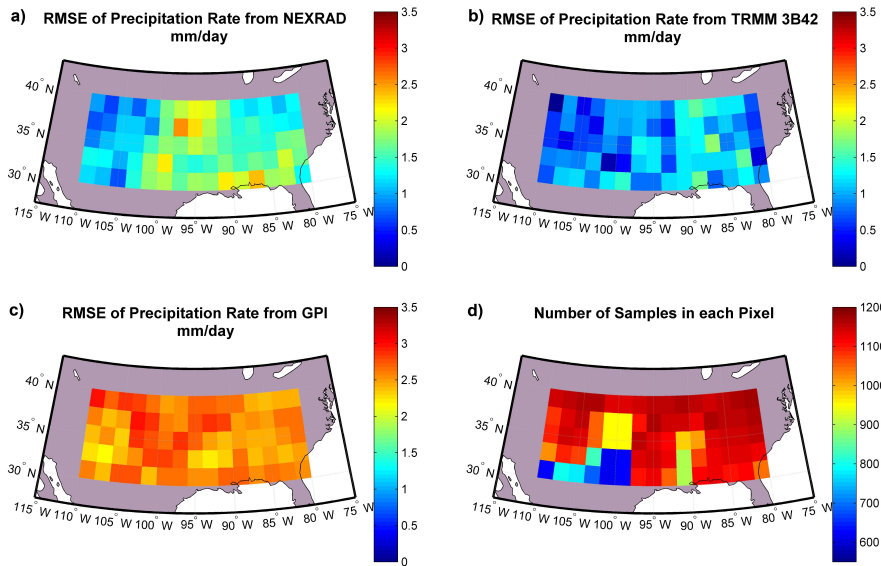


Figure S6: RMSE of the precipitation rate estimated from TC using triplets in group 1; a) NEXRAD, b) TRMM 3B42, c) GPI. Panel d) shows the number of data points (biweekly measurements) in each pixel that are used for error estimation in TC analysis.

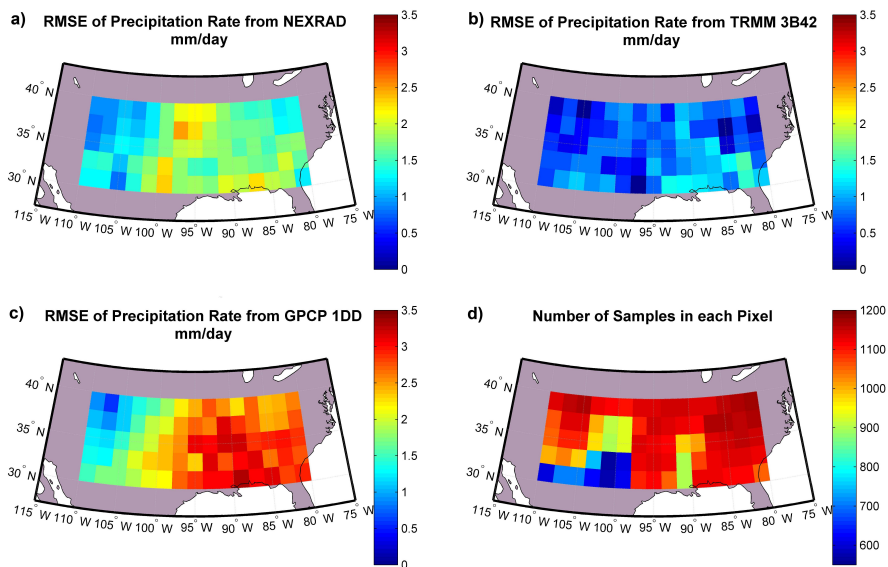


Figure S7: RMSE of the precipitation rate estimated from TC using triplets in group 2; a) NEXRAD, b) TRMM 3B42, c) GPCP 1DD. Panel d) shows the number of data points (biweekly measurements) in each pixel that are used for error estimation in TC analysis.