

Sanford School of Public Policy

Faculty Guide 2024-2025

The Sanford School faculty continue to earn national and international recognition for excellence in research, policy engagement and teaching.

We have a diverse mix of academic scholars and professors of the practice whose practical experience in top leadership roles enhances the classroom experience. Sanford faculty are leaders in every part of policymaking as they train the next generation of policy leaders.

Faculty members collaborate across disciplines to explore answers to issues that face our world and anticipate the problems and solutions of future challenges. Our singular goal at the Sanford School is to make the world a better place, and our faculty are the foundation of that pursuit.

Learn more about Sanford's research themes and faculty: www.sanford.duke.edu

Faculty Administration



MANOJ MOHANAN: Interim Dean, Sanford School of Public Policy; Creed C. Black Professor of Public Policy and Economics; Research Professor of Global Health PhD (Health Policy–Economics), Harvard University, 2009
Pronouns: He/him/his
Research: Health economics; health policy; development economics; applied microeconomics



ANNA GASSMAN-PINES: Senior Associate Dean for Faculty Affairs; Professor of Public Policy, Psychology and Neuroscience; Faculty Affiliate, Center for Child and Family Policy
PhD (Psychology), New York University, 2007
Pronouns: She/her/hers
Research: Child development in low-income families; low-wage work and family life; poverty and inequality;

social policy

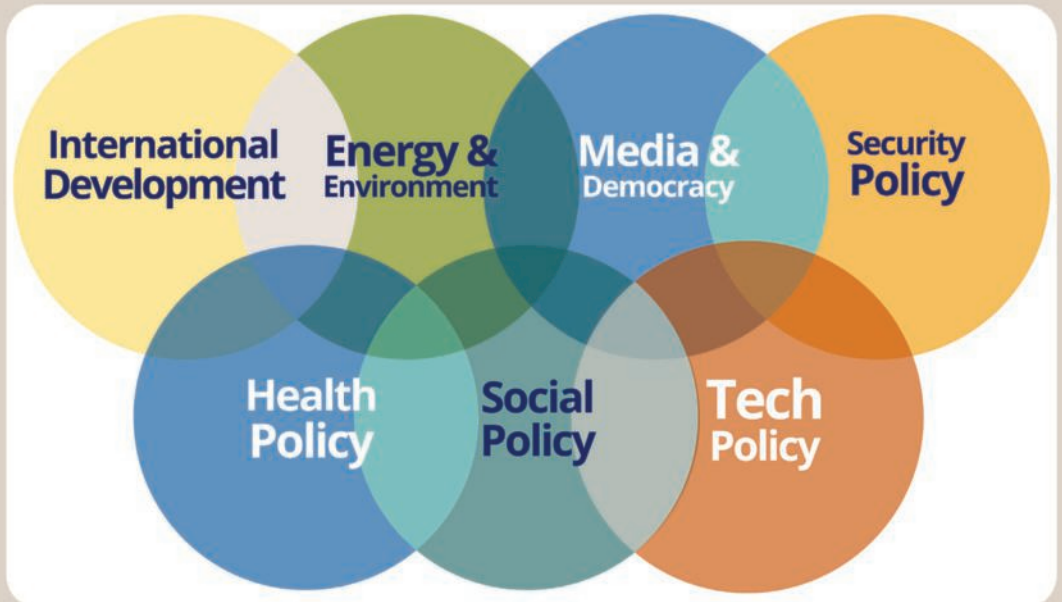
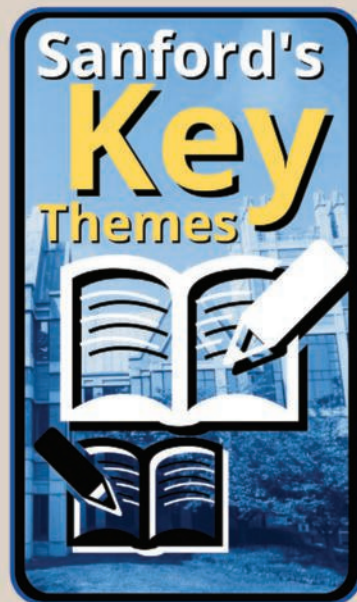


CHRISTINA M. GIBSON-DAVIS: Associate Dean for Academic Programs; Professor of Public Policy and Sociology; Faculty Affiliate, Center for Child and Family Policy
PhD (Human Development and Social Policy), Northwestern University, 2001
Research: Causes and consequences of marriage for low-income families; health and well-being of low-income families and children; wealth inequality among households with children



JAY A. PEARSON: Associate Dean of Diversity, Equity and Inclusion; H.M. Foundation Associate Professor of Public Policy; Associate Research Professor of Global Health; Associate, Duke Initiative for Science & Society
PhD: (Health Behavior and Health Education), University of Michigan, 2006
Pronouns: He/him/his

Research: Social determinants of population health differences; identity construction; stratification; social bias, including supremacy, oppression, privilege and discrimination



Program Directors



VICKI BOGAN: Director of Graduate Studies, Master of Public Policy Program; Professor of Public Policy PhD (Economics), Brown University, 2004
Pronouns: She/her/hers
Research: Inequality; household finance; behavioral finance; family economics



NATHAN A. BOUCHER: Director of Undergraduate Studies; Associate Research Professor of Public Policy, Medicine, Nursing and Population Health Sciences; Core Faculty Member, Margolis Institute for Health Policy DrPH (Public Health), State University of New York, 2015
Research: Qualitative and mixed methods research on caregivers' and healthcare consumers' needs in the context of serious illness; palliative and hospice care delivery; veterans' care delivery



M. KATE BUNDORF: Director of Research Programs, J. Alexander McMahon Distinguished Professor of Health Policy and Management; Professor of Public Policy; Core Faculty Member, Margolis Institute for Health Policy PhD (Managerial Science and Applied Economics), University of Pennsylvania, 2000
Pronouns: She/her/hers
Research: Health policy and the economics of health care systems; public and private health insurance markets; the organization of health care providers; consumer decision making in health care



LISA A. GENNETIAN: Director of Graduate Studies, PhD Program; Pritzker Professor of Early Learning Policy Studies; Professor of Public Policy; Faculty Affiliate, Center for Child and Family Policy PhD (Economics), Cornell University, 1998
Pronouns: She/her/hers
Research: Child poverty; social policy and economics; behavioral economics; early childhood interventions; causal methods



ASHER HILDEBRAND: Professor of the Practice of Public Policy; Director of Graduate Studies, Executive Master of Public Affairs Program; Associate, Duke Initiative for Science & Society MPA (International Relations), Princeton University, 2009
Pronouns: He/him/his
Research: American politics; legislative institutions; civic participation and advocacy; democracy and governance; U.S. foreign policy



CORINNE M. KRUPP: Director of Graduate Studies, Master of International Development Policy Program; Professor of the Practice of Public Policy PhD (Economics), University of Pennsylvania, 1990
Research: International trade policy; antidumping law and firm behavior; competition policy; European Union trade and finance issues; economic development



TIMOTHY NICHOLS: Director of Graduate Studies, Executive Master of National Security Policy Program; Visiting Professor of the Practice of Public Policy; Executive Director, Counterterrorism and Public Policy Fellows Program MA (American Studies), University of South Florida, 2000; MBA, North Carolina State University, 2010
Research: Counterterrorism policy; U.S. intelligence policy; special operations; irregular warfare

Core Sanford Faculty Members



BILL ADAIR: Knight Professor of the Practice of Journalism and Public Policy; Associate, Duke Initiative for Science & Society BA (Political Science), Arizona State University, 1985
Pronouns: He/him/his
Research: Political reporting and fact-checking; AI and new technologies in journalism



CATHERINE ADMAY: Senior Lecturer in Public Policy; Assistant Director of Undergraduate Studies; Faculty Director, Duke-UNC Rotary Peace Center; Faculty Affiliate, Duke Global Health Institute; Faculty Associate, Duke Initiative for Science & Society JD, Yale University, 1992
Pronouns: She/her/hers

Research: Human rights; governance and accountability in addressing poverty; ethics; global health; peacebuilding; the arts and social imagination



ABDULLAH T. ANTEPLI: Director, Polis: Center for Politics; Professor of the Practice of Public Policy; Professor of the Practice of Interfaith Relations at Divinity School MA (Islamic Studies and Christian-Muslim Relations), Hartford Seminary, 2005
Pronouns: He/him/his
Research: Religious peace-building; cross-religious interfaith work; faith-based diplomacy



LESLIE BABINSKI: Research Professor of Public Policy, Psychology and Neuroscience; Faculty Affiliate, Center for Child and Family Policy PhD (Education and School Psychology), University of California at Berkeley, 1993
Pronouns: She/her/hers
Research: Educational interventions; multilingual learners; teacher professional development; child development; program evaluation



SARAH B. BERMEO: Associate Professor of Public Policy and Political Science; Co-Director, Duke Program on Climate, Resilience, and Migration; Faculty Affiliate, Duke Center for International Development PhD (Politics), Princeton University, 2008
Research: International development; international political economy; climate-related migration; foreign aid; trade agreements; Central America (*on leave, Fall 2024*)



FRANK BRUNI: Eugene C. Patterson Professor of the Practice for Journalism and Public Policy MS (Journalism), Columbia University, 1988
Research: Politics and culture; LGBTQ+ and disability issues



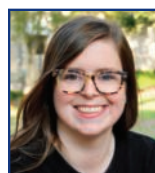
STEPHEN BUCKLEY: Eugene C. Patterson Professor of the Practice for Journalism and Public Policy BS (Political Science), Duke University, 1989
Research: Journalism; international affairs reporting



ROBYN CAPLAN: Assistant Professor of Public Policy; Senior Lecturing Fellow, Duke Initiative for Science & Society PhD (Communications and Information), Rutgers University, 2021
Research: Media manipulation; fake news; digital technology regulation; platform governance



NICHOLAS CARNES: Z. Smith Reynolds Professor of Public Policy, Political Science, and Sociology; Chair, Duke Campus IRB PhD (Politics and Social Policy), Princeton University, 2011
Pronouns: He/him/his
Research: Working-class representation in politics; climate change politics; the foster care system; popular culture



SUSAN COLBOURN: Associate Research Professor of Public Policy; Associate Director of the Program in American Grand Strategy PhD (History), University of Toronto, 2018
Research: Diplomatic and international history; international relations; European security; U.S. foreign policy; North Atlantic Treaty Organization (NATO); nuclear weapons



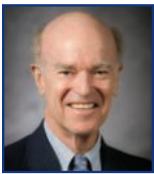
JOAB COREY: Senior Lecturer in Public Policy PhD (Economics), West Virginia University, 2009
Research: Labor economics; microeconomics; natural resource abundance; institutional quality; economic growth across U.S. states



WILLIAM A. DARITY, JR.: Samuel DuBois Cook Professor of Public Policy, African and African American Studies, Economics, and Business; Director, Samuel DuBois Cook Center on Social Equity PhD (Economics), MIT, 1978
Research: Stratification economics, intergroup (race, class, caste, ethnicity, gender) inequality, reparations, colorism, discrimination, social psychology and exposure to unemployment; health and wealth; North-South theories of trade, development, and growth



KENNETH A. DODGE: William McDougall Distinguished Professor of Public Policy Studies; Professor of Psychology and Neuroscience; Affiliate, Center for Child and Family Policy; Affiliate, Duke Initiative for Science & Society; Faculty Network Member, Duke Institute for Brain Sciences PhD (Clinical Psychology), Duke University, 1978
Research: Development and prevention of violence in children and families; violence prevention policy; early education policy



JOEL L. FLEISHMAN: Professor of Law and Public Policy; Director, Samuel and Ronnie Heyman Center for Ethics, Public Policy and the Professions; Director, Center for Strategic Philanthropy and Civil Society LLM, Yale University, 1960; JD, UNC-Chapel Hill, 1959
 Pronouns: He/him/his
Research: Nonprofit and foundation governance and accountability; foundation strategic choice-making and impact measurement; special strategies appropriate to limited-life foundations; ethics and public policy



ELIZABETH GIFFORD: Research Professor of Public Policy; Professor of Pediatrics; Director of Data Initiatives, Center for Child and Family Policy PhD (Health Policy and Administration and Demography), Pennsylvania State University, 2005
Research: Child maltreatment; children and the law; education; intergenerational effects of criminal justice policies; veteran health



KRISTIN A. GOSS: Susan B. King Distinguished Professor of Public Policy; Professor of Political Science; Director, Duke in DC Program – Policy, Leadership & Innovation; Director, Center for the Study of Philanthropy & Voluntarism; Faculty Affiliate, Center for Strategic Philanthropy and Civil Society; Faculty Affiliate, Hart Leadership Program PhD (Political Science), Harvard University, 2003
 Pronouns: She/her/hers
Research: Civic and political participation; role of voluntary associations, foundations and philanthropists in public policy; politics of gun control; women and politics; agenda setting; public opinion; interest groups



DAVID HOFFMAN: Steed Family Professor of the Practice in Cyber Security; Associate, Duke Initiative for Science & Society; Affiliate Faculty Member, Margolis Institute for Health Policy JD, Duke University, 1993
 Pronouns: He/him/his
Research: Implications of cyber policy and law in national security; health data; gender violence and access to information



SEBASTIAN JAMES: Professor of the Practice of Public Policy, Duke Center for International Development PhD (Public Policy), Harvard University, 2007
Research: Tax policy; tax administration reform; fiscal policy and development economics



BRUCE W. JENTLESON: William Preston Few Professor of Public Policy; Professor of Political Science PhD (Government), Cornell University, 1983
 Pronouns: He/him/his
Research: American foreign policy; international relations; international security; economic sanctions; conflict prevention and resolution; globalization and governance; Middle East peace and security



MARC JEULAND: Professor of Public Policy, Environment, and Civil and Environmental Engineering; Research Professor of Global Health PhD (Environmental Sciences and Engineering), UNC-Chapel Hill, 2009
 Pronouns: He/him/his
Research: Nonmarket valuation; preferences and demand for environmental services; cost-benefit and cost effectiveness analysis; water and sanitation; planning and management of trans-boundary water resources; the impacts and economics of climate change; energy and development



MATTHEW S. JOHNSON: Assistant Professor of Public Policy and Economics PhD (Economics), Boston University, 2016
 Pronouns: He/him/his
Research: Labor economics; workplace regulations; worker power (*on leave, Fall 2024*)



SUZANNE KATZENSTEIN: Lecturer PhD (Political Science), Columbia University, 2013
 Pronouns: She/her/hers
Research: Human rights; corporate accountability; corporate social responsibility



JUDITH KELLEY: ITT/Terry Sanford Professor of Public Policy; Professor of Political Science PhD (Public Policy), Harvard University, 2001
 Pronouns: She/her/hers
Research: International relations and institutions; international law and norms; international election monitoring; democracy promotion; human rights; human trafficking; the role of external actors in domestic political reforms



SARAH A.G. KOMISAROW: Assistant Professor of Public Policy and Economics; Faculty Affiliate, Center for Child and Family Policy PhD (Economics), University of Chicago, 2016
 Pronouns: She/her/hers
Research: Economics of education; K-12 education policy; educational inequalities



ANIRUDH KRISHNA: Edgar T. Thompson Professor of Public Policy; Professor of Political Science; Affiliate, Duke Global Health Institute (DGHI) PhD (Government), Cornell University, 2000
Research: Poverty; inequality; social mobility; talent ladders



JENNIFER LANSFORD: S. Malcolm Gillis Distinguished Research Professor of Public Policy; Director, Center for Child and Family Policy PhD (Developmental Psychology), University of Michigan, Ann Arbor, 2000
 Pronouns: She/her/hers
Research: Youth violence prevention; peer influence; parenting



SHELLEY LIU: Assistant Professor of Public Policy
PhD (Government), Harvard University, 2020
Research: African government; politics of war; democracy; civic engagement



POPE "MAC" MCCORKLE: Professor of the Practice of Public Policy
JD, Duke University, 1984
Research: Politics of the policy process; campaigns and elections; political history and theory



ROBYN MEEKS: Mark and Lynne Florian Assistant Professor of Public Policy
PhD (Public Policy), Harvard University, 2012
Pronouns: She/her/hers
Research: Environmental and energy economics; development economics



M. GIOVANNA MERLI: Professor of Public Policy and Sociology; Research Professor of Global Health; Director, Duke University Population Research Institute (DUPRI)
PhD (Demography), University of Pennsylvania, 1996
Research: Health of populations; migration and immigration; social networks; HIV/AIDS modeling; survey sampling; Chinese diaspora



SIMON MILES: Associate Professor of Public Policy, Slavic and Eurasian Studies, and History
PhD (History), University of Texas at Austin, 2017
Research: Diplomatic history; the Cold War; international relations and security; U.S. foreign policy; Soviet Union and Russia (*on leave, 2024/2025*)



NATALIA S. MIROVITSKAYA: Professor of the Practice of Public Policy, Duke Center for International Development; Faculty Network Member, Energy Initiative
PhD (Economics), Russian Academy of Sciences, 1980
Research: Sustainable development; international resource and environmental policy; conflict-sensitive development; global gender issues



GARRY S. MITCHELL, JR.: Assistant Professor of Public Policy
PhD (Education), Harvard University, 2024
Research: Educational and social inequality; Race and class; elite education; upward mobility; nonprofit educational access; sociology of education; qualitative research methods



ERIC MLYN: Lecturer; Distinguished Faculty Fellow, Kenan Institute for Ethics
PhD (Political Science), University of Minnesota, 1991
Pronouns: He/him/his
Research: Role of civic engagement in American higher education; the relationship between civic and political engagement; social innovation; Trumpism and American

higher education



PHILIP M. NAPOLI: Director, DeWitt Wallace Center for Media and Democracy; James R. Shepley Professor of Public Policy; Associate, Duke Initiative for Science & Society
PhD (Mass Communication, Telecommunications), Northwestern University, 1997
Research: Media policy and regulation; journalism; media and democracy; politics of policy research; media institutions



ANDREW NURKIN: Director, Hart Leadership Program; Hart Associate Professor of the Practice of Public Policy
M.Div., Yale Divinity School, 2007
MFA (Poetry), Vermont College of Fine Arts, 2011
Research: Civic engagement; civic leadership; experiential education; arts policy; facilitation



JENNIFER W. OWEN: Senior Lecturer in Public Policy
MPA (Public Administration), Harvard University, 1996
Research: The policymaking process, evidence-based policy and researcher-policy maker interaction; application of research to real-world policy and practice settings; education and social policy (*on leave, Fall 2024*)



SUBHRENDU K. PATTANAYAK: Oak Professor of Environment and Energy Policy; Professor of Public Policy, Environment, and Economics; Research Professor of Global Health
PhD (Environmental Economics), Duke University, 1997
Research: Environment and development economics; energy access; tropical forests; biodiversity; water supply and sanitation; global environmental health; diarrhea and piped water; malaria and bed nets; respiratory infections and cook stoves



GUNTHER PECK: Associate Professor of History and Public Policy
PhD (History), Yale University, 1994
Research: 19th- and 20th-century American social and cultural history; comparative immigration and labor studies; environmental history



ALEXANDER PFAFF: Professor of Public Policy, Economics and Environment
PhD (Economics), MIT, 1995
Pronouns: He/him/his
Research: Environmental and natural resource economics and policy; development and applied microeconomics and policy



DIRK PHILIPSEN: Associate Research Professor of Public Policy and History; Director, Better World Focus Program; Director, Regenerative Futures Lab, Kenan Institute
PhD (U.S. Comparative Social and Economic History), Duke University, 1992
Pronouns: He/him/his
Research: Economic history; economic performance indicators; ethics and public service; U.S. politics and public values



NOAH PICKUS: Professor of the Practice of Public Policy; Associate Provost, Duke University
PhD (Political Science), Princeton University, 1995
Research: Leadership, ethics, and public service; immigration and citizenship; global higher education



HANNAH POSTEL: Assistant Professor of Public Policy PhD (Demography and Social Policy), Princeton University, 2022
Pronouns: She/her/hers
Research: Migration and immigration; international development; economic history; demography; Asian-American studies



VINCENT E. PRICE: Walter Hines Page University Professor of Public Policy and Political Science; President, Duke University
PhD (Communication), Stanford University, 1987
Research: Public opinion; social influence; political communication



TIMOTHY H. PROFETA: Associate Professor of the Practice of Public Policy
JD/MEM, Duke University, 1997
Research: Climate change policy design; analysis of legal authority to address climate and energy challenges; the Clean Air Act; adaptive use of current environmental laws for evolving environmental challenges



MARCOS A. RANGEL: Associate Professor of Public Policy and Economics
PhD (Economics), University of California at Los Angeles, 2004
Pronouns: He/him/his
Research: Education and social policy; health and population; international development



KENNETH S. ROGERSON: Professor of the Practice of Public Policy; Associate, Duke Initiative for Science & Society
PhD (Political Science), University of South Carolina, 2000
Pronouns: He/him/his
Research: Technology policy; international communications; media; journalism (*on leave, Fall 2024*)



DEONDRA E. ROSE: Kevin D. Gorter Associate Professor; Associate Professor of Public Policy and Political Science
PhD (Government), Cornell University, 2012
Pronouns: She/her/hers
Research: Higher education policy; policy feedback; inequality; the politics of gender, race and class; American political development; political engagement (*on leave, Fall 2024*)



KATIE ROSANBALM: Associate Research Professor of Public Policy
PhD (Clinical Psychology), Ohio University, 2002
Pronouns: She/her/hers
Research: Child psychology; child development; social programs; K-12 education



DAVID SCHANZER: Professor of the Practice of Public Policy
JD, Harvard University, 1989
Pronouns: He/him/his
Research: Counterterrorism strategy, policy and law; homeland security



JENNIFER SIEGEL: Bruce Kuniholm Distinguished Professor of History and Public Policy
PhD (History), Yale University, 1998
Research: Diplomatic and military history; European, Russian and East European history; comparative empires; human conflict; peace and diplomacy



CHRISTOPHER SIMS: Associate Professor of the Practice of Public Policy; Director, Duke Center for Documentary Studies
MA (Visual Communication), UNC-Chapel Hill, 2003; MFA (Studio Art), Maryland Institute College of Art, 2008
Pronouns: He/him/his
Research: Documentary photography; visual communication; literary journalism; web design



MALLORY E. SORELLE: Assistant Professor of Public Policy
PhD (Government), Cornell University, 2016
Pronouns: She/her/hers
Research: Inequality; American political economy; political engagement; policy feedback; consumer finance; social welfare policy; regulation; mixed methods research



JONATHAN STROMSETH: Professor of the Practice of Public Policy, Duke Center for International Development
PhD (Political Science), Columbia University, 1998
Research: Chinese and U.S. foreign policy; governance and development



DONALD H. TAYLOR: Director, SSRI; Professor of Public Policy; Professor of Community and Family Medicine, Duke Medical Center
PhD (Health Policy and Administration), UNC-Chapel Hill, 1995
Pronouns: He/him/his
Research: Aging and long-term care; health policy (*on leave, Spring 2025*)



PETER A. UBEL: Madge and Dennis T. McLawhorn University Distinguished Professor of Business Administration, Public Policy and Medicine; Professor of Population Health Sciences; Associate, Duke Initiative for Science & Society; Core Member, Margolis Institute for Health Policy; Member, Duke Cancer Institute
MD, University of Minnesota, 1988
Research: Role of values and preferences in healthcare decision making; ethics in healthcare, such as informed consent and healthcare rationing



KATHRYN WHETTEN: Professor of Public Policy and Nursing; Research Professor, Global Health; Director, Center for Health Policy & Inequalities Research
PhD (Health Policy and Administration), UNC-Chapel Hill, 1994
Pronouns: They/them/theirs
Research: Health disparities; HIV/AIDS; substance abuse; mental health; trauma; orphaned and separated children; sexual and gender minorities



NORBERT WILSON: Director, World Food Policy Center; Professor of Public Policy; Professor of Food, Economics and Community (Divinity);
PhD (Agricultural and Resource Economics), University of California, Davis, 1999
Research: Food access, choice and waste; food safety and quality issues in international trade and domestic food systems



ALEXANDRA-EMMANUELLE ZAGBAYOU: Hart Associate Professor of the Practice of Public Policy
BA (International Studies and Social and Economic Justice), UNC-Chapel Hill, 2010
Research: Leadership ethics; women in leadership; community engagement; local policymaking; philanthropy and organizational development (*on leave, Fall 2024*)



JONATHAN ZHANG: Assistant Professor of Public Policy
PhD (Economics), Stanford University 2020
Research: Health economics and health policy

Professors Emeriti

TONY BROWN: Professor of the Practice of Public Policy Emeritus
MBA, Harvard University, 1968

Research: Teaching and experiential learning pedagogies; social entrepreneurship; enterprising leadership; leadership development; socially responsible businesses

KELLY BROWNELL: Dean, Sanford School of Public Policy Emeritus; Robert L. Flowers Professor of Public Policy Emeritus
PhD (Clinical Psychology), Rutgers University, 1977
Pronouns: He/him/his

Research: Food policy; food systems; obesity prevention; health; public health policy

CHARLES T. CLOTFELTER: Z. Smith Reynolds Professor of Public Policy Emeritus
PhD (Economics), Harvard University, 1974

Research: Economics of education; public finance

ROBERT CONRAD: Associate Professor of Public Policy and Economics Emeritus
PhD (Economics), University of Wisconsin-Madison, 1978

Research: Public finance; natural resource economics; mineral taxation

PHILIP J. COOK: ITT/Terry Sanford Professor of Public Policy Emeritus; Professor of Economics Emeritus
PhD (Economics), University of California, Berkeley, 1973

Research: Criminal justice policy; public health policy and social policy; regulation of alcohol, guns and gambling; violence prevention; education

FERNANDO FERNHOLZ: Professor of the Practice of Public Policy Emeritus
PhD (Economics), Boston University, 2000

Research: Latin American economics; social programs in Latin America; health disparity

ROSEMARY M. FERNHOLZ: Senior Lecturing Fellow of Public Policy
PhD, Harvard University, 1998

Research: Global economics; indigenous peoples; sustainability; clean water

GRAHAM GLENDAY: Professor of the Practice of Public Policy Emeritus
PhD (Public Policy), Harvard University, 1982

Research: Public finance; international tax policy administration; economic development

ALEX HARRIS: Professor of the Practice of Public Policy and Documentary Studies Emeritus; Creative Director, Lewis Hines Documentary Fellows Program
BA (Psychology), Yale University, 1971

Research: Documentary photography and writing; patients living with brain cancer; Hispanic culture in northern New Mexico; poverty and housing in North Carolina; media coverage of humanitarian challenges; aging and retirement in the United States; José Martí and Cuba; Edward O. Wilson and the U.S. Gulf Coast

SHERMAN JAMES: Susan B. King Professor of Public Policy Emeritus
PhD (Social Psychology), Washington University in St. Louis, 1973

Research: Social determinants of U.S. racial and ethnic health disparities in health and health care; community-based and public policy interventions to reduce racial and ethnic health disparities

ROY KELLY: Professor of the Practice of Public Policy Emeritus

PhD (Urban Planning), Harvard University, 1985

Research: Fiscal decentralization; public financial management; investment appraisal; local government finance; property taxation

ROBERT KORSTAD: Professor of Public Policy Emeritus

PhD (History), UNC-Chapel Hill, 1987

Research: Social policy from an historical perspective; labor; poverty; civil rights

BRUCE R. KUNIHOLM: Dean, Sanford School of Public Policy Emeritus; University Distinguished Service Professor Emeritus of Public Policy; Professor Emeritus of History
PhD (History), Duke University, 1976

Research: U.S. policy in the Middle East; U.S. diplomatic history; national security; uses of history and public policy

HELEN F. LADD: Susan B. King Professor of Public Policy Emeritus; Professor of Economics Emeritus; Faculty Affiliate, Center for Child and Family Policy
PhD (Economics), Harvard University, 1974

Research: Education policy in the U.S. and other countries; state and local public finance

FRANCIS LETHEM: Professor of the Practice of Public Policy Emeritus

PhD (Economics), Neuchatel University, 1967

Pronouns: He/him/his

Research: Institutional design; project design; capacity building towards sustainable development; conflict prevention

ELLEN MICKIEWICZ: James R. Shepley Professor of Public Policy Emeritus; Professor Emerita of Political Science

PhD (Political Science), Yale University, 1965

Research: Political communication, democratization and political psychology; using cognitive science theory to research heuristics employed in processing news, especially under conditions of limited information, as in Russia and parts of Eastern Europe

CLARA G. MUSCHKIN: Associate Research Professor of Public Policy Emeritus; Faculty Director, North Carolina Education Research

Data Center; Director, Child Policy Research Certificate Program; Faculty Affiliate, Center for Child and Family Policy

PhD (Sociology), Duke University, 1989

Pronouns: She/her/hers

Research: Childhood sociology and demographics; K-12 education; poverty and inequality

PHYLLIS POMERANTZ: Professor of the Practice of Public Policy Emeritus

PhD (International Relations), Tufts University, 1978

Pronouns: She/her/hers

Research: Aid effectiveness; governance, leadership and development; global public goods and programs; program design for poverty reduction

GANGADHAR PRASAD (GP) SHUKLA:

Professor of the Practice of Public Policy Emeritus
PhD (Political Economy and Government), Harvard University, 1993

Research: Tax analysis and revenue forecasting; public finance for open economies; investment appraisal; taxation of natural resources

THOMAS W. TAYLOR: Professor of the Practice of Public Policy Emeritus

JD, UNC-Chapel Hill, 1969

Pronouns: He/him/his

Research: National and homeland security; civil-military relations; constitutional and intelligence law; management and leadership

Faculty with Secondary Appointments in Public Policy

MATTHEW D. ADLER: Richard A. Horvitz Professor of Law; Professor of Philosophy and Economics; Director, Center for Law, Economics and Public Policy
JD, Yale, 1991

DAN ARIELY: James B. Duke Professor of Behavioral Economics; Professor of Economics and Business Administration
PhD (Business Administration), Duke University, 1998; PhD (Cognitive Psychology), UNC-Chapel Hill, 1996

CHRISTOPHER BAIL: Douglas and Ellen Lowey Professor of Sociology
PhD (Sociology), Harvard University, 2011

EDWARD J. BALLEISEN: Vice Provost for Interdisciplinary Studies; Professor of History;
PhD (History), Yale, 1995

Pronouns: He/him/his

LORI BENNEAR: Interim Stanback Dean, Nicholas School of the Environment; Professor of Energy Economics and Policy
PhD (Public Policy), Harvard University, 2004

AARON CHATTERJI: Professor of Business Administration
PhD (Business Administration), University of California at Berkeley, 2006

ARIA CHERNIK: Associate Professor of the Practice of Public Policy; Associate Professor of the Practice in the Social Science Research Institute
PhD (English), UNC-Greensboro, 2011

PARDIS EMAMI-NAEINI: Assistant Professor of Computer Science
PhD (Computer Science), Carnegie Mellon University, 2020

PETER D. FEAVER: Professor of Political Science; Director, Duke Program in American Grand Strategy
PhD (Political Science), Harvard University, 1990
Pronouns: He/him/his

BRANDON GARRETT: L. Neil Williams, Jr. Professor of Law
JD, Columbia University, 2001

ALLISON GILBERT: Associate Professor in Psychiatry and Behavioral Sciences
PhD (Health Policy and Management), UNC-Chapel Hill, 2009

SUSANNE B. HAGA: Professor in Medicine and Biology
PhD (Human Genetics), University of Maryland, Baltimore, 1999
Pronouns: She/her/hers

ANGEL LUIS HARRIS: Professor of Sociology; Faculty Research Scholar, DuPRI Population Research Center; Faculty Affiliate, Duke Center for Child and Family Policy
PhD (Public Policy and Sociology), University of Michigan, 2005

D. SUNSHINE HILLYGUS: Professor of Political Science; Director, Duke Initiative on Survey Methodology
PhD (Political Science), Stanford University, 2003

V. JOSEPH HOTZ: Arts and Sciences Distinguished Professor of Economics and Public Policy
PhD (Economics), University of Wisconsin-Madison, 1980

LISA KEISTER: Gilhuly Family Professor of Sociology
PhD (Sociology), Cornell University, 1997

NANCY MACLEAN: William H. Chafe Professor of History
PhD (History), University of Wisconsin-Madison, 1989

PAULA D. MCCLAIN: James B. Duke Distinguished Professor of Political Science; Vice Provost for Graduate Education
PhD (Political Science), Howard University, 1977

MARK MCCLELLAN: Robert J. Margolis Professor of Business, Medicine and Policy; Professor of the Practice of Business Administration; Director, Margolis Institute for Health Policy
PhD (Economics), MIT, 1993

MICHAEL C. MUNGER: Professor of Political Science and Economics; Director, Philosophy, Politics and Economics Program
PhD (Economics), Washington University, 1984
Pronouns: They/them/theirs

BRIAN MURRAY: Research Professor, NSOE; Interim Director, Duke Nicholas Institute for Environmental Policy
PhD (Resource Economics and Policy), Duke University, 1992

THOMAS NECHYBA: Professor of Economics
PhD (Economics), University of Rochester, 1994

DAVID RIDLEY: Professor of the Practice of Public Policy, Business Administration and Economics
PhD (Economics), Duke University, 2001

CHRISTOPHER SCHROEDER: Professor Emeritus of Law; Director, Program in Public Law
JD, University of California School of Law, Berkeley, 1974

DAVID SIEGEL: Professor of Political Science
PhD (Political Economics), Stanford University, 2006

SIM SITKIN: Michael W. Krzyzewski University Professor in Leadership; Professor of Management; Director, Behavioral Science and Policy Center
PhD (Organizational Behavior), Stanford University, 1986

CORRINA SORENSON: Assistant Professor in Population Health Sciences and Medicine; Core Faculty Member and Director of Graduate Education Initiatives and the Margolis Scholars Program in Health Policy and Management, Margolis Institute for Health Policy
PhD (Health Policy), London School of Economics, 2015

DUNCAN THOMAS: Norb F. Schaefer Professor of International Studies; Professor of Economics; Professor of Global Health
PhD (Economics), Princeton University, 1986

JEFFREY VINCENT: Clarence F. Korstian Professor of Forest Economics and Management
PhD, Yale University, 1988

ERIKA S. WEINTHAL: John O. Blackburn Distinguished Professor of Environmental Policy
PhD (Political Science), Columbia University, 1998
Pronouns: She/her/hers

JONATHAN B. WIENER: William R. and Thomas L. Perkins Professor of Law; Professor of Environmental Policy; Co-director, Duke Center on Risk, Science & Society Initiative; Affiliated faculty, Duke Kunshan University
JD, Harvard University, 1987

CHRISTOPHER WILDEMAN: Professor of Sociology
PhD (Sociology and Demography), Princeton University, 2008

GAVIN YAMEY: Hymowitz Family Professor of the Practice in Global Health
MSc, London School of Hygiene and Tropical Medicine, 2010; MBBS, University College of London, 1994
Pronouns: He/him/his

Other Affiliated Faculty

Sanford School/Public Policy

TERRY ALLEBAUGH: Adjunct Instructor
MDiv, Duke University, 1983

TOM ALLIN: Visiting Professor of the Practice of Public Policy; Newhouse Innovator-in-Residence
BS (Economics), Duke University, 1971

WILLIAM J. BARBER II: Adjunct Instructor
MDiv, Duke University, 1989; PhD (Divinity), Drew University, 2003

MARIEL BEASLEY: Adjunct Instructor
MPP, Duke University, 2013
Pronouns: She/her/hers

SUSANNA BIRDSONG: Adjunct Instructor
JD, American University

DENNIS BLAIR: Adjunct Professor
MA (History and Languages), Oxford University

MARK BONDO: Adjunct Instructor
MPA (Public Administration), University of North Carolina at Chapel Hill

DEAN BRENNER: Adjunct Instructor
JD, Georgetown University

MEREDITH BUNNEL: Adjunct Instructor
JD, University of Pittsburgh, 2008; MPP, Duke University, 2017

FRANCES TILNEY BURKE: Adjunct Professor
PhD (History of Foreign Relations), Tufts University, 2022

PHILIP J. CANDREVA: Adjunct Professor
JD, Monterey College of Law, 2015; MS (Financial Management), U.S. Naval Postgraduate School, 1996

DAMON CIRCOSTA: Adjunct Instructor
JD, University of Arizona, 2003

GERRY COHEN: Adjunct Instructor
JD, UNC-Chapel Hill, 1975; MA (Political Science), UNC-Chapel Hill, 2004
Pronouns: He/him/his

TAYLOR CONGER: Adjunct Instructor
MPH/MSSW, Columbia University, 2011

SHELLEY CURRAN: Adjunct Instructor
JD, North Carolina Central University, 2000

PAUL A. DILLON: Adjunct Instructor
MS, Northern Illinois University, 1969

WILLIAM EWELL: Adjunct Instructor
PhD (Political Science and Government), UNC-Chapel Hill, 2009

TARA LYNNE FIKES: Adjunct Instructor
DPA, University of Southern California
Pronouns: She/her/hers

PENNY FLEMING: Adjunct Instructor
MPA, American University, 1978
Pronouns: She/her/hers

ALLAN FREYER: Adjunct Instructor
PhD (City/Urban, Community and Regional Planning/Economic Development), UNC-Chapel Hill, 2017

ANTHONY GAD: Adjunct Instructor
MPP, Georgetown University, 2004
Pronouns: He/him, his

DAVEED GARTENSTEIN-ROSS: Adjunct Instructor
PhD (World Politics), Catholic University of America, 2014

EMILY GOLDMAN: Adjunct Professor
PhD (Political Science), Stanford University, 1989

NATALIE GOLDRING: Visiting Professor of the Practice of Public Policy
PhD (Political Science), MIT, 1984

MOLLY GOLDWASSER: Adjunct Instructor
EdD, Vanderbilt University, 2014

MEGAN GOLONKA: Adjunct Instructor
PhD (Developmental Psychology), Duke University, 2013

BEN GORDON: Adjunct Instructor
MA (Labor and Industrial Relations), University of Illinois, 1996

ELIZABETH GRASMEDER: Adjunct Professor
PhD (Political Science), George Washington University, 2020

ALISON HAGY: Adjunct Instructor
PhD (Economics), Duke University

LAURA ANNE HALL: Adjunct Professor
MPM, University of Maryland, 1998

MARK HART: Adjunct Professor of the Practice of Public Policy
EdD, University of Florida, 2013

JENNIFER HAYGOOD: Adjunct Instructor
MPP, Duke University

ANDREW HERTEL: Visiting Professor
MBA, Troy University

JOHN HILLEN: Adjunct Professor
PhD (International Relations): Oxford University

ADAM HOLLOWELL: Adjunct Instructor
PhD (Theological Ethics), University of Edinburgh, 2009
Pronouns: He/him/his

LYNN HOLMES: Visiting Professor of the Practice of Public Policy
JD, Georgetown University, 1980

JOHN HOOD: Adjunct Instructor
MA (Political Science and Philosophy), UNC-Greensboro

BRIAN HOOK: Visiting Professor of the Practice of Public Policy
JD, University of Iowa

ABE KATZ: Adjunct Instructor
MPP, Duke University

KRISTA KENNEY: Adjunct Instructor
PhD (Public Administration), North Carolina
State University, 2022

YORK KLEINHANDLER: Adjunct Instructor
MS (Organizational Leadership), Colorado State
University, 2015

JARRETT LANE: Adjunct Instructor
MPP, Duke University

NICOLE LAWRENCE: Adjunct Instructor
PhD (Educational Administration and Policy),
University of Nebraska

MARK T. MAZZETTI: Adjunct Professor
MA (History), Oxford University, 1997

JOHN MCARTHUR: Adjunct Professor
JD, University of South Carolina, 1981

WHITNEY MCCOY: Adjunct Instructor
PhD (Educational Psychology), North Carolina
State University, 2020

JASMINE MCGHEE: Adjunct Instructor
JD, Columbia Law School, 2006

PATRICK MCHUGH: Adjunct Instructor
PhD (Political Science), UNC-Chapel Hill, 2010

FLOYD MCKISSICK: Adjunct Professor of
the Practice of Public Policy
JD, Duke University, 1984

BLYTHE MEYER: Adjunct Instructor
BA (Graphic Design), North Carolina State
University, 2014

HELEN MILOJEVICH: Adjunct Instructor
PhD (Psychology), University of California at
Irvine, 2016

SETH MORGAN: Adjunct Instructor
PhD (Environmental Policy and Economics),
Duke University, 2022

ZACHARY OSBORNE: Adjunct Instructor
MBA, Stanford University School of Business, 2013

BILLY PIZER: Visiting Professor
PhD (Economics), Harvard University, 1996
Pronouns: He/him/his

DAVID E. PRICE: Professor of Political Science
and Public Policy Emeritus; POLIS Distinguished
Fellow
PhD (Political Science), Yale University, 1969

JOHN QUINTERNO: Visiting Professor of
the Practice of Public Policy
MPA, UNC-Chapel Hill, 2020

DAVID ROMINE: Adjunct Instructor
PhD (History), Duke University, 2018

JON J. ROSENWASSER: Adjunct Professor
PhD (International Relations), Tufts University, 2004

THOMAS W. ROSS: Adjunct Professor
MA (Theology and Ethics), Union Theological
Seminary, 2022

LAURA SALLSTROM: Adjunct Instructor
MA, Johns Hopkins University, 1994

MITCH SAVA: Adjunct Instructor
MPA, Harvard University

JOSEPH SHERLOCK: Adjunct Instructor
MS (Social Policy), London School of Economics
and Political Science, 2014

JUSTIN SHERMAN: Adjunct Instructor
MA (Security Studies), Georgetown University

ALEXANDRA SIROTA: Adjunct Instructor
MA (International Relations and Public Policy),
University of Chicago, 2004

JESSICA SPERLING SMOKOSKI: Adjunct
Instructor; Director, Applied Research, Evaluation,
& Engagement, Social Science Research Institute
(SSRI); Co-director, Evaluation & Strategic Planning,
Clinical & Translational Science Institute (CTSI)
PhD (Sociology), City University of New York, 2014
Pronouns: She/her/hers

KEVIN SOLOMON: Adjunct Instructor
BA (Political Science), Duke University, 2020

MICHAEL STEGMAN: Visiting Professor of
the Practice of Public Policy
PhD (City Planning), University of Pennsylvania

BARBARA SUDE: Adjunct Instructor
PhD (Near Eastern Studies), Princeton University

CAMPBELL TUCKER: Adjunct Instructor
JD, Duke University, 1985

KRISTIN WALKER: Adjunct Instructor
MPP, Duke University

DIANE WEDDINGTON: Visiting Lecturer
MDiv, Duke University, 1976; MA (Journalism),
University of Missouri, 1977

MARTHA WIEHE: Adjunct Instructor
MPA, Syracuse University, 2006

DANIELLE ZAPOTOCZNY: Adjunct Instructor
BA (Public Policy), Duke University, 1996
Pronouns: She/her/hers

DeWitt Wallace Center for Media & Democracy

ERIC DEGGANS: Adjunct Instructor in
Journalism and Public Policy
BA (Political Science and Journalism), Indiana
University at Bloomington, 1990

BRONWEN DICKEY: Adjunct Instructor in
Journalism and Public Policy
MFA (Nonfiction Writing), Columbia University,
2009

M. TYLER DUKES: Adjunct Instructor in
Journalism and Public Policy
BS (Science, Technology and Society), NC State
University, 2008

DAVID A. GRAHAM: Adjunct Instructor in
Journalism and Public Policy
AB (History), Duke University, 2009

CAROL JACKSON: Adjunct Instructor in
Journalism and Public Policy
BA (Mass Communications), Emerson College

SCOTT MCCARTNEY: Visiting Lecturer in
Journalism and Public Policy
AB (Public Policy Studies), Duke University, 1982

LYNN C. OWENS: Adjunct Instructor in
Journalism and Public Policy
PhD (Journalism and Mass Communications),
UNC-Chapel Hill, 2006
Pronouns: She/her/hers

MICHAEL SCHOENFELD: Visiting Professor
of the Practice of Journalism and Public Policy
MS (Public Policy), Stonybrook University

PAUL TASH: Adjunct Instructor in Journalism
and Public Policy
LLB, University of Edinburgh–College of Law, 1978

BARRY YEOMAN: Adjunct Instructor in
Journalism and Public Policy
BA, New York University, 1982

Hart Leadership Program

LEONARD (LENNY) STERN: Adjunct
Instructor
JD, University of Pennsylvania

SHANE STANSBURY: Visiting Lecturer in
Public Policy; Senior Lecturing Fellow in Law
JD, Columbia University, 2001
Pronouns: He/him/his

Duke Center for International Development

PETER BARNES: Adjunct Instructor
JD, Yale University, 1980

HANS-MARTIN BOEHMER: Visiting
Professor of the Practice of Public Policy
PhD (Economics), Georgetown University, 1993

JENNIFER WHEY-MIN CHOW: Adjunct
Instructor
MPH, George Washington University, 2007

RACHEL ANN GEORGE: Lecturing Fellow
PhD (International Relations), London School of
Economics, 2018

GARY GEREFFI: Adjunct Instructor; Professor
of Sociology Emeritus
PhD (Sociology), Yale University, 1980

EDMUND MALESKY: Professor of Political
Science and Public Policy; Director, Duke Center
for International Development
PhD (Political Science), Duke University, 2004

LISA MOREAU: Adjunct Instructor
MA (Nonprofit Management), Regis University,
1995

MAUREEN MORIARTY-LEMPKE: Adjunct
Professor of the Practice of Public Policy
PhD (Regional Planning), University of
Massachusetts at Amherst, 1999

MANUEL SAGER: Visiting Professor of the Practice
of Public Policy
PhD, University of Zurich Law School, 1995

KERILYN DANIEL SCHEWEL: Lecturing Fellow
PhD (Sociology), University of Amsterdam, 2019;
PhD (International Development), University of
Oxford, 2015

ANDY SISSON: Visiting Professor of the Practice
of Public Policy
PhD (International Development), Tufts
University, 1983

SHAI TAMARI: Adjunct Instructor
MA (Near and Middle Eastern Studies), SOAS,
University of London, 2006; MA (History),
UNC-Chapel Hill, 2008

TUSI (UNDES) WEN: Lecturing Fellow
PhD (Political Science), Duke University

ALIX ZWANE: Visiting Professor of the Practice
of Public Policy; Newhouse Innovator-in-Residence
PhD (Public Policy), Harvard University

The information in this publication is accurate, to the best of our knowledge, as of August 2024. The Sanford School of Public Policy and Duke University reserve the right to change programs of study and teaching staff without prior notice, in accordance with established procedures.

