

Green/Tradewater River Basin in Kentucky

Daniel I. Carey

The total area of the Green/Tradewater River Basin is 11,500 square miles, including 410 square miles in Tennessee. More than one-fourth of Kentucky lies in the basin, including all or parts of 35 Kentucky counties. The basin contains nearly 23,600 miles of streams, including 1,580 miles in Tennessee. The Green River Basin contains over 9,230 square miles, including 410 square miles in Tennessee.

From an elevation of 1,384 feet on a ridge in Lincoln County, water flows west 385 miles down the Green River to its confluence with the Ohio River east of Henderson at an elevation of 342 feet. From an elevation of 710 feet on a ridge in Christian County, water flows north 132 miles down the Tradewater River to its confluence with the Ohio River on the Crittenden-Union county line at an elevation of 324 feet.

Residents of the Green/Tradewater Basin draw about 66 million gallons of water per day from streams and reservoirs in the basin. On average, about 7,400 million gallons per day (mgd) flow out of the Green River Basin, and 725 mgd from the Tradewater. About once every 10 years, the flow will be less than 105 mgd in the Green and zero in the Tradewater for a week. This variability in flow affects water users and stream life.

More than 2,500 miles of assessed streams in the basin do not support designated uses for: warm-water aquatic habitat (45%), fish consumption (48%), primary contact recreation (61%), and secondary contact recreation (45%). Nearly 400 miles of streams have been declared special use waters: either exceptional waters or reference reach waters.

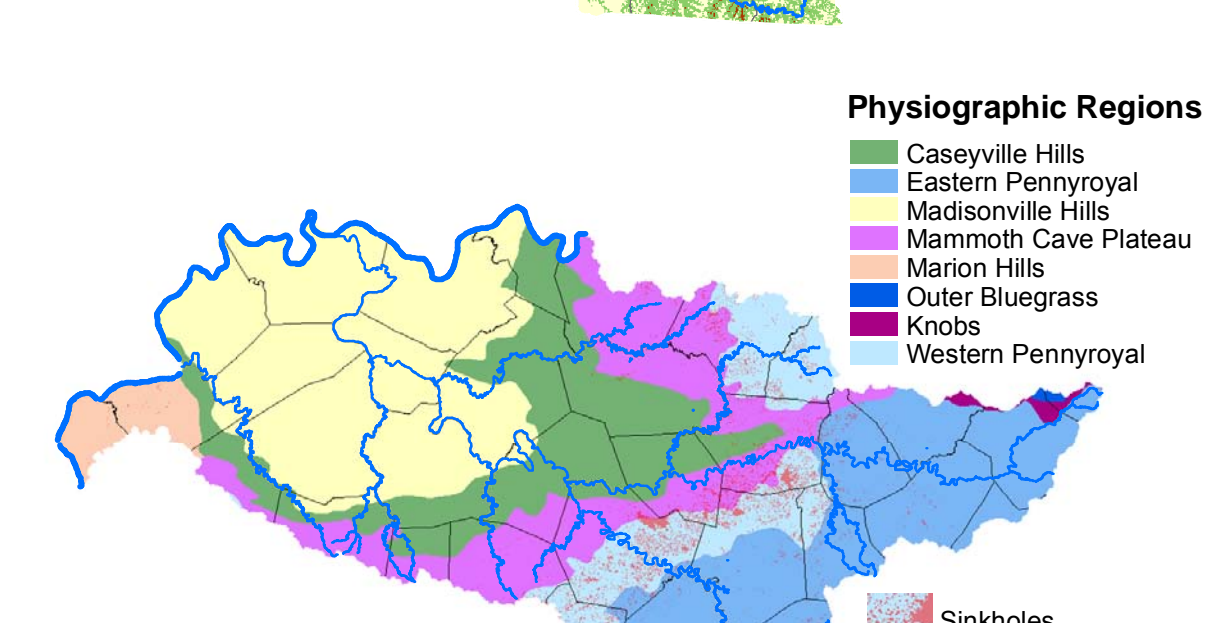
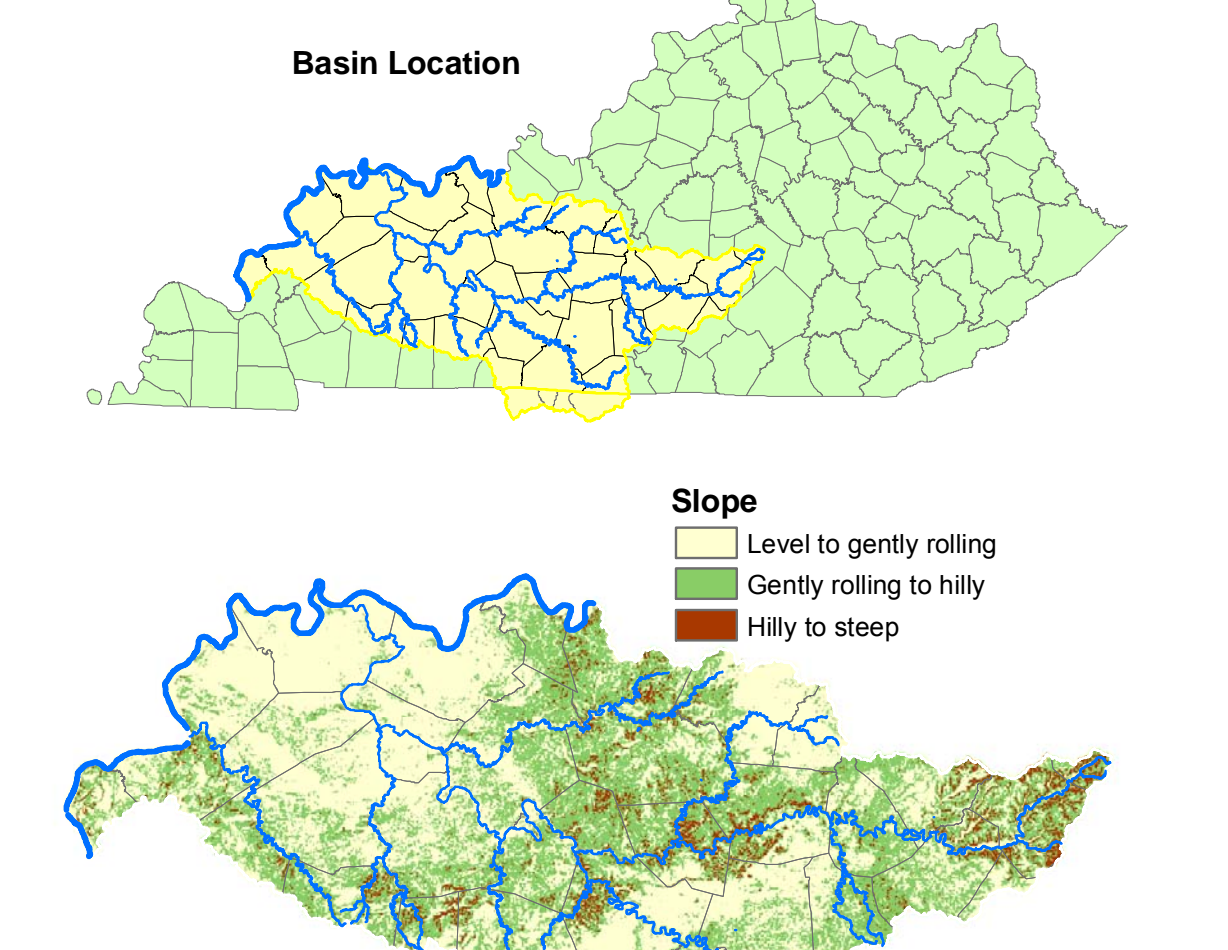
There are seven remediation priority watersheds including 960 square miles: primary impacts are habitat alterations, siltation, pathogens, atrazine, nutrients, and low dissolved oxygen, caused by agriculture, mining, and stream and habitat modifications.

Sixteen large man-made lakes in the basin total 32,000 acres with 780 miles of shoreline.

The world-famous Mammoth Cave National Park lies within the basin.

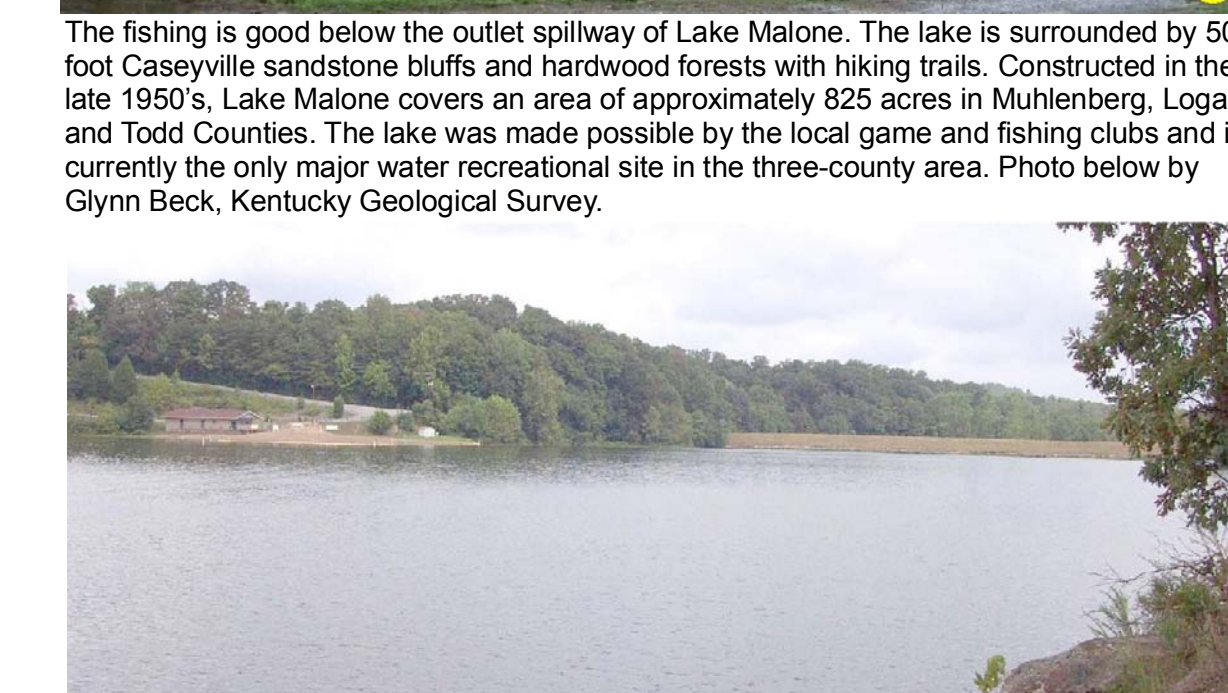
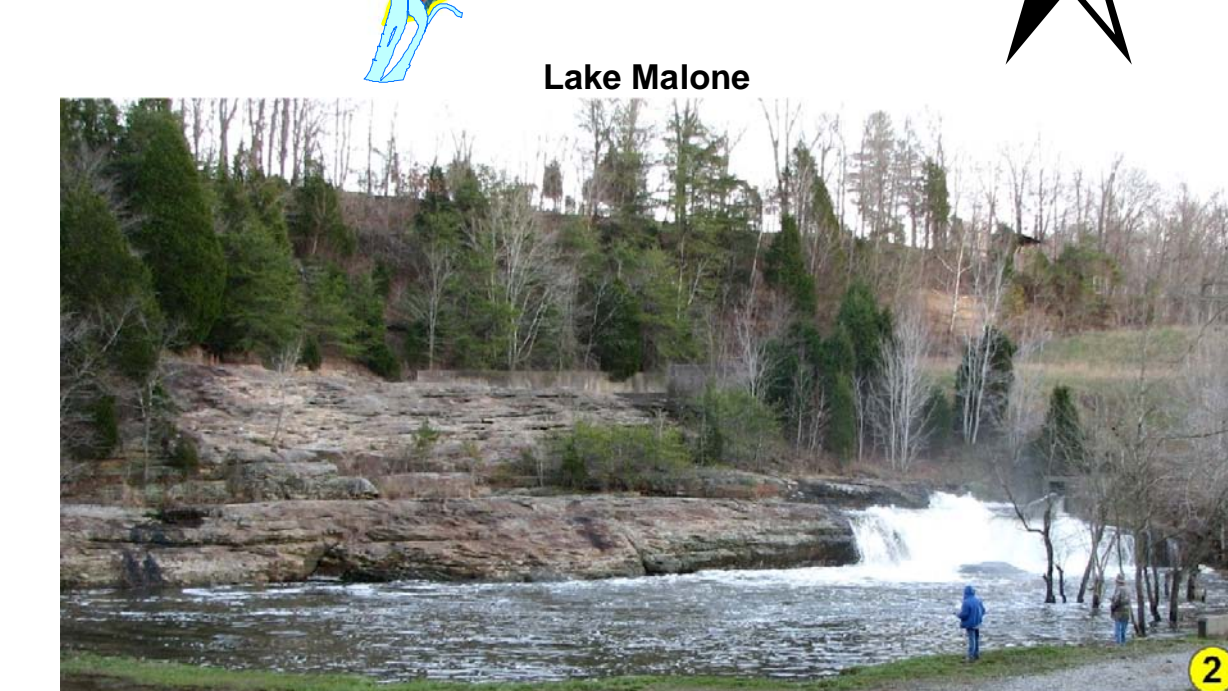
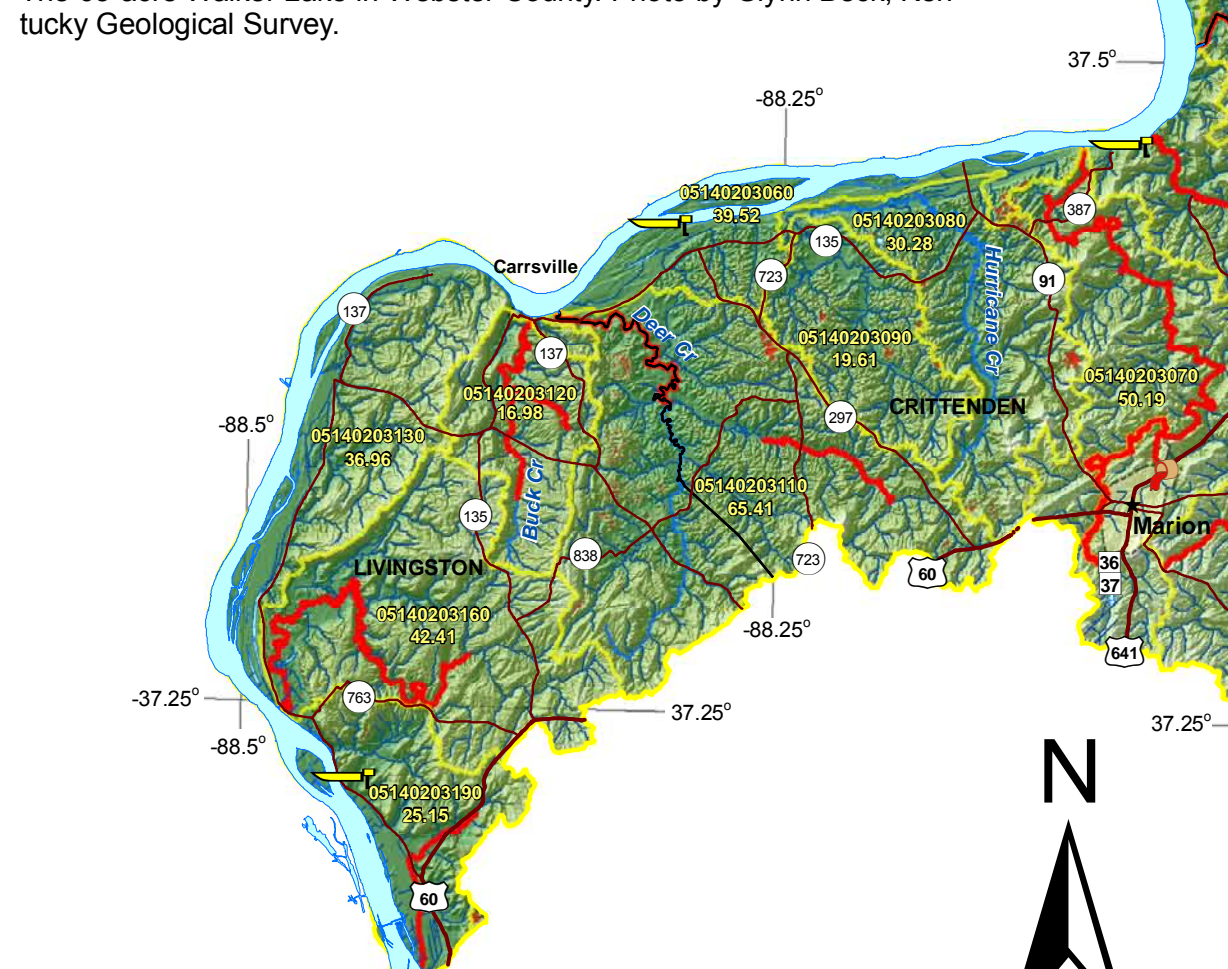
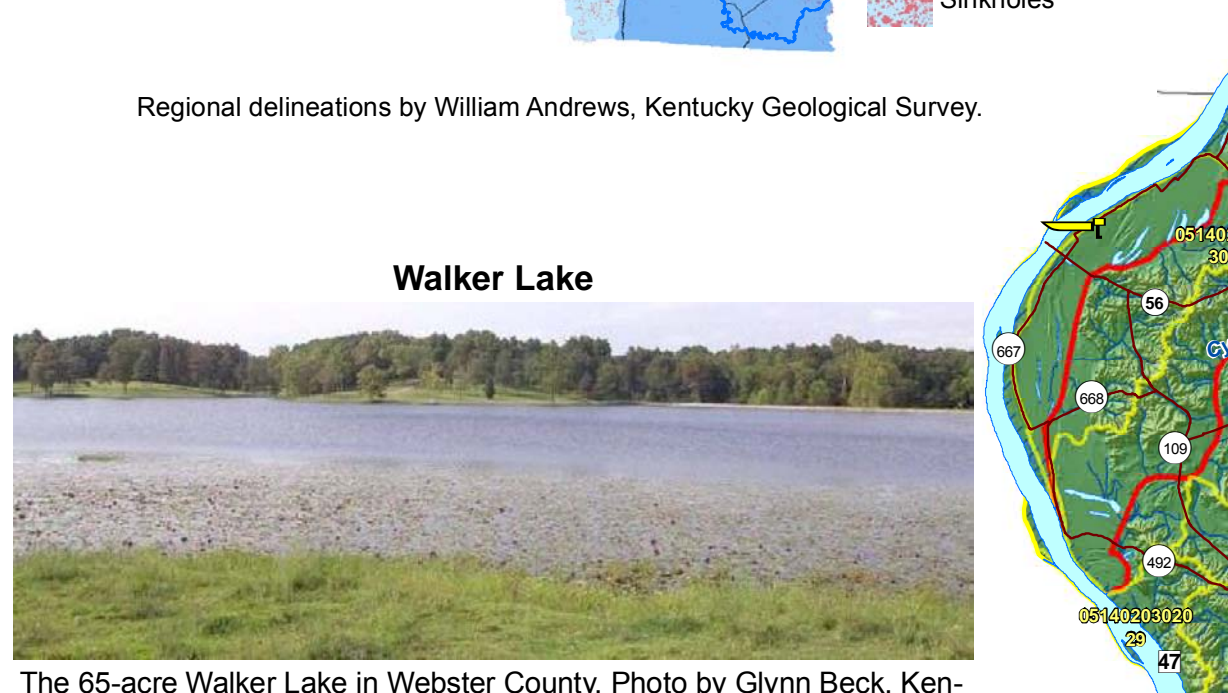
The Pennyroyal Region of the basin is an area of intense karst, characterized by sinkholes and underground flow with few surface streams.

Lock and Dam 1 at mile 9.1 and 2 at mile 63.1 allow river transportation up to the closed Lock and Dam 3 at mile 108.5.



Acknowledgments

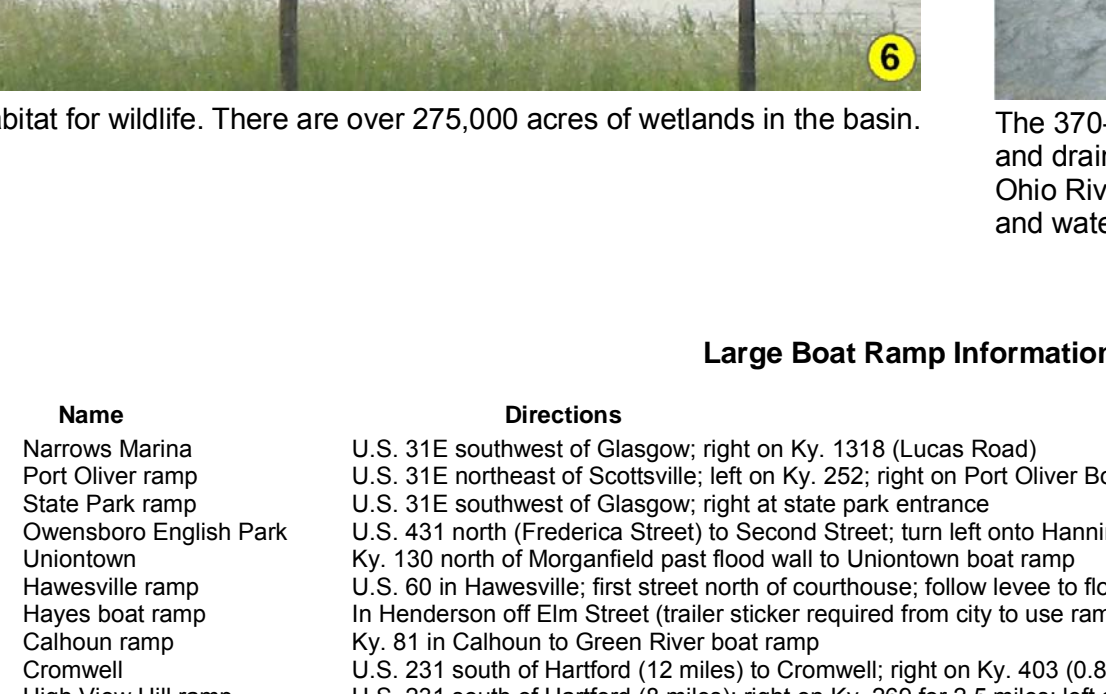
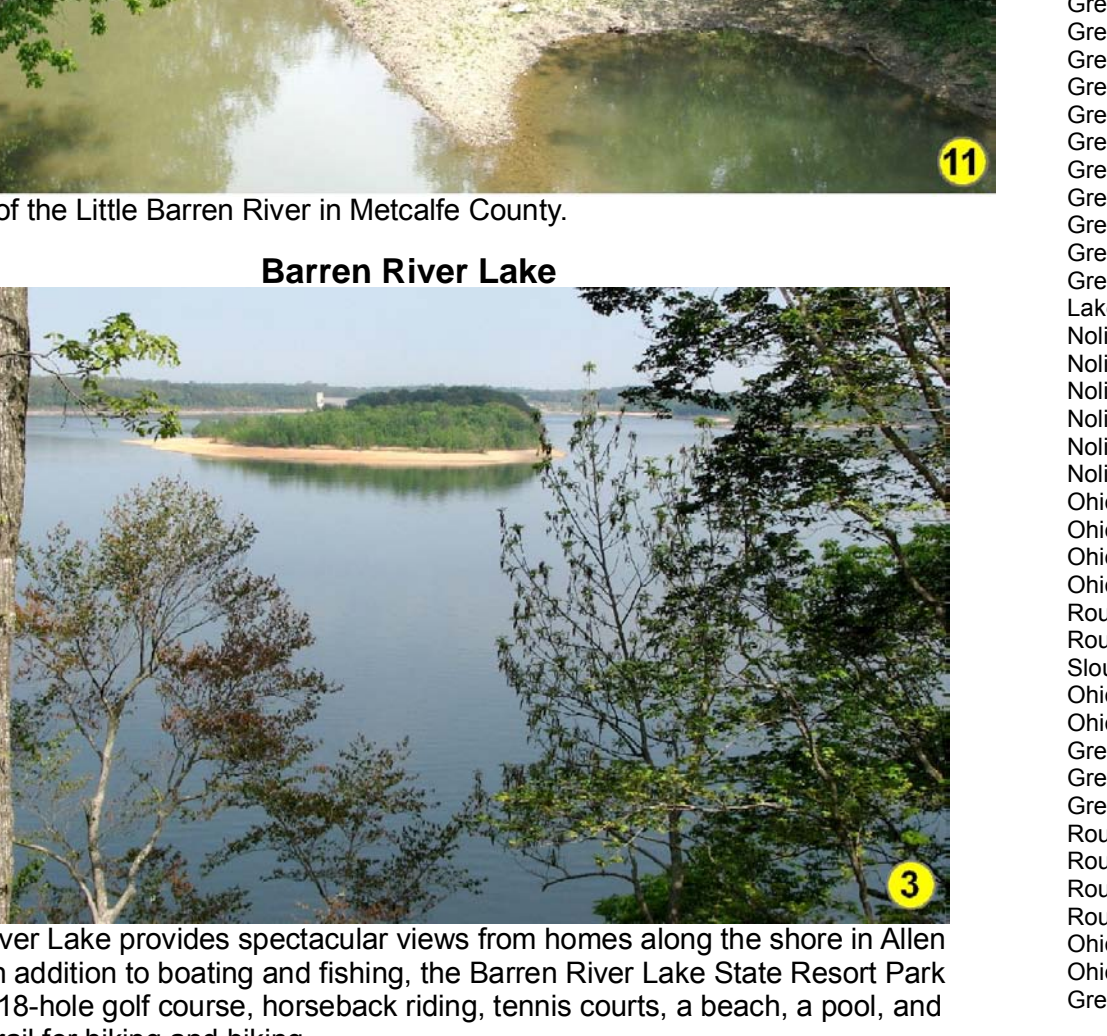
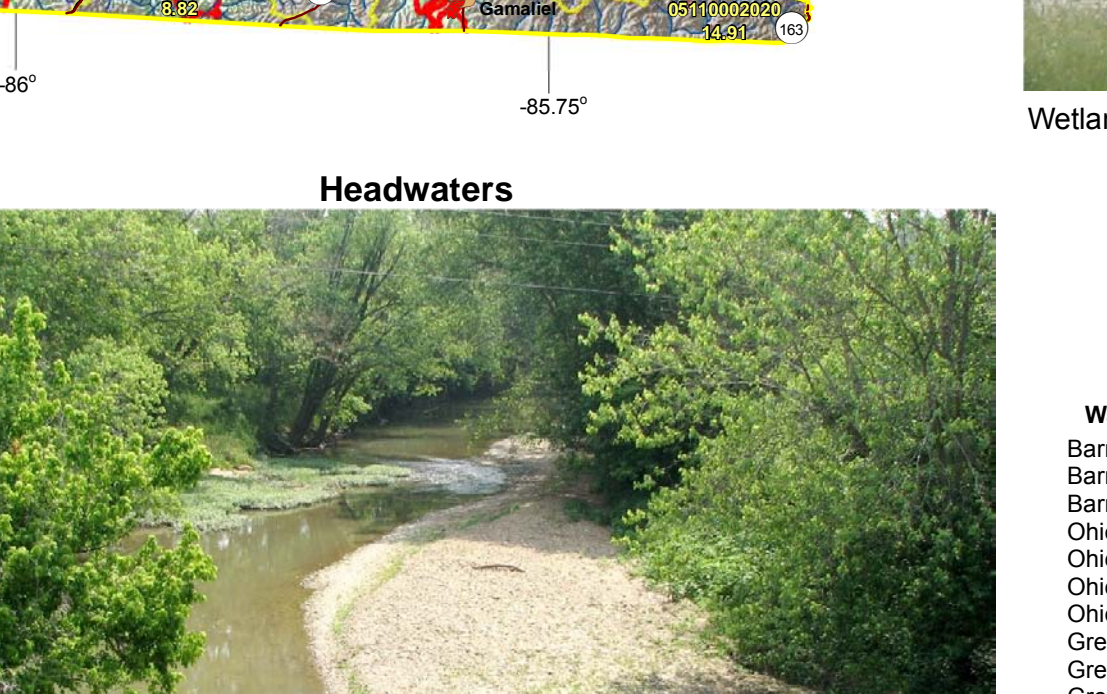
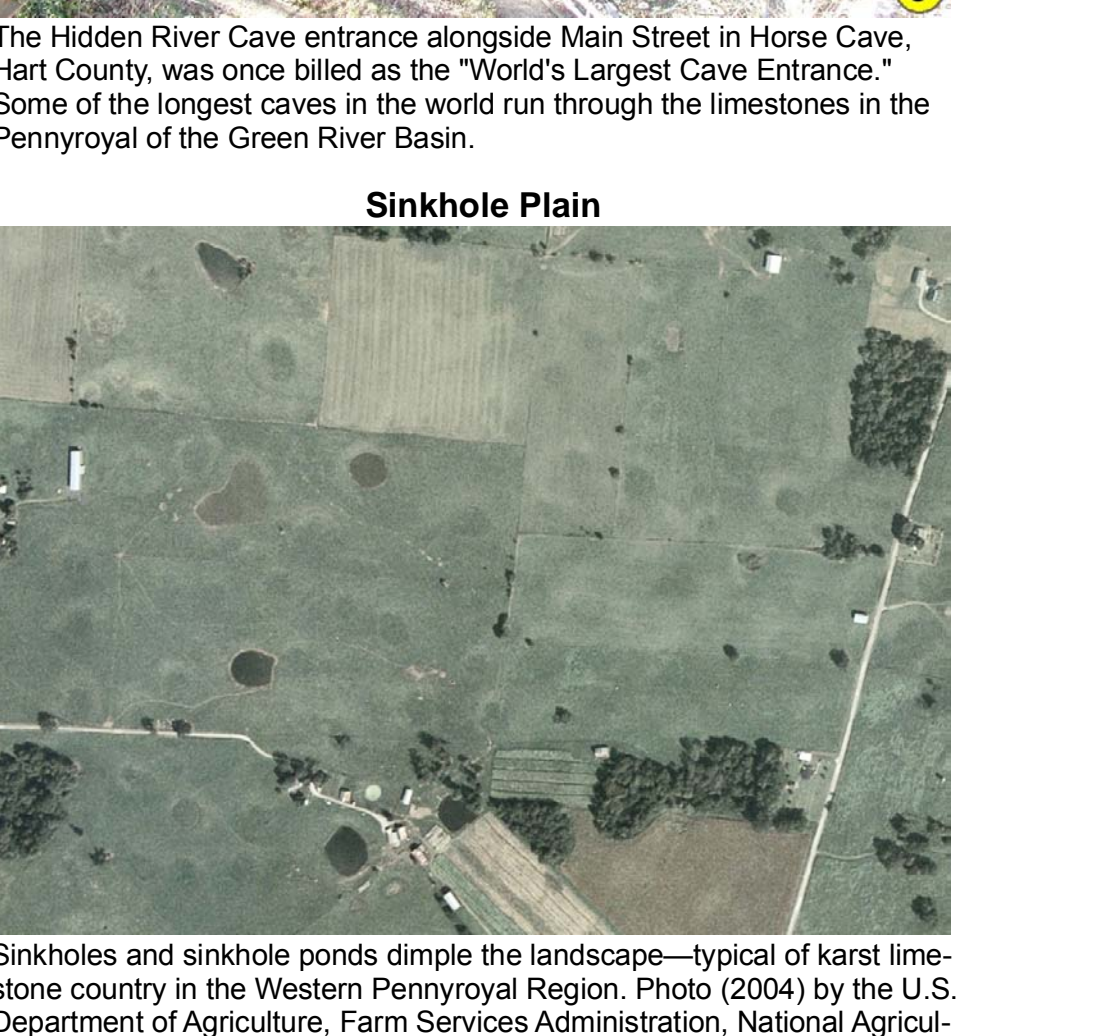
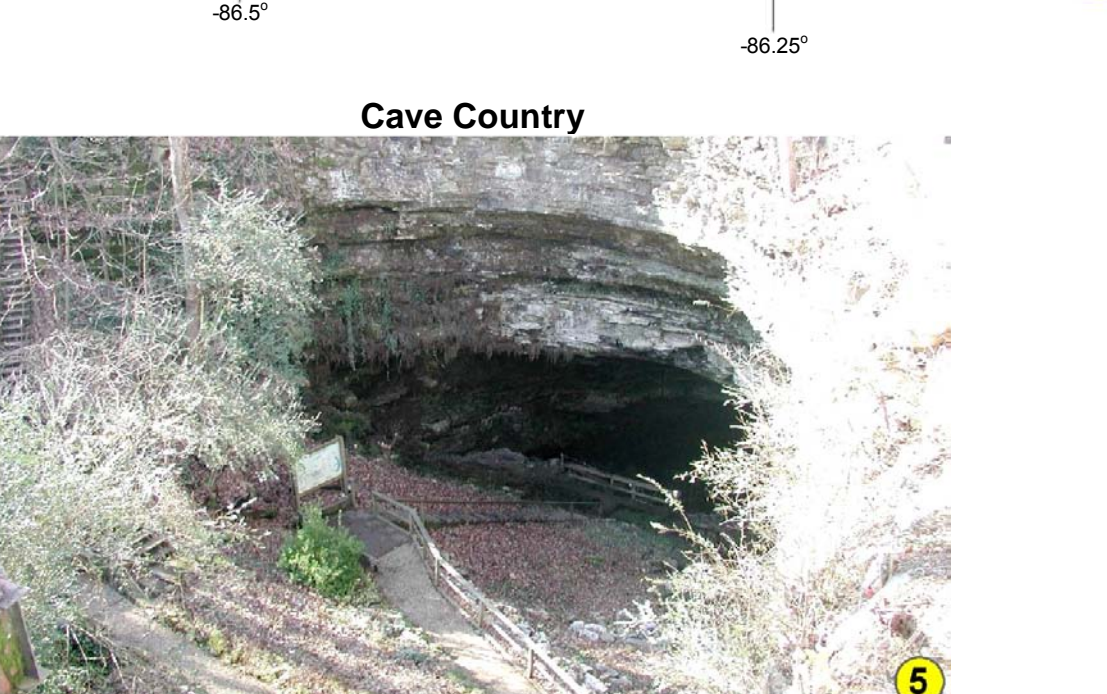
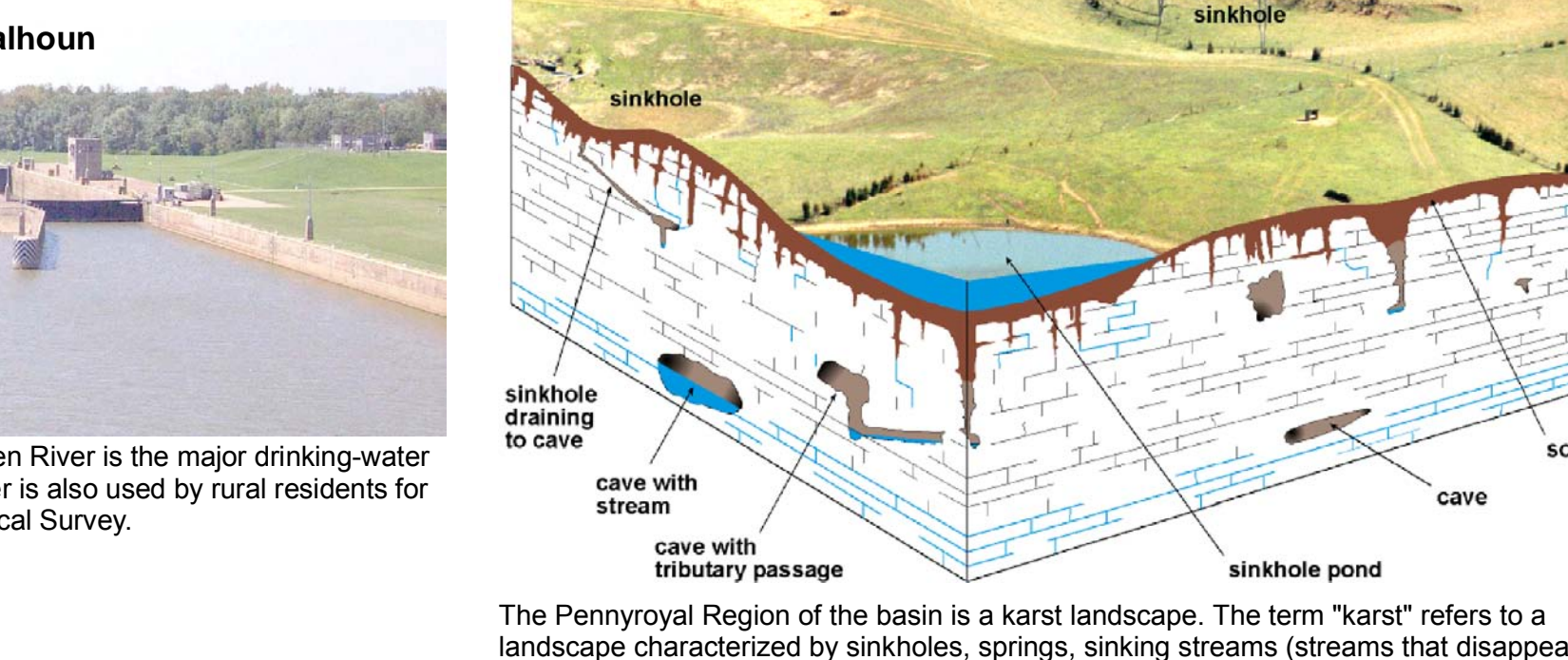
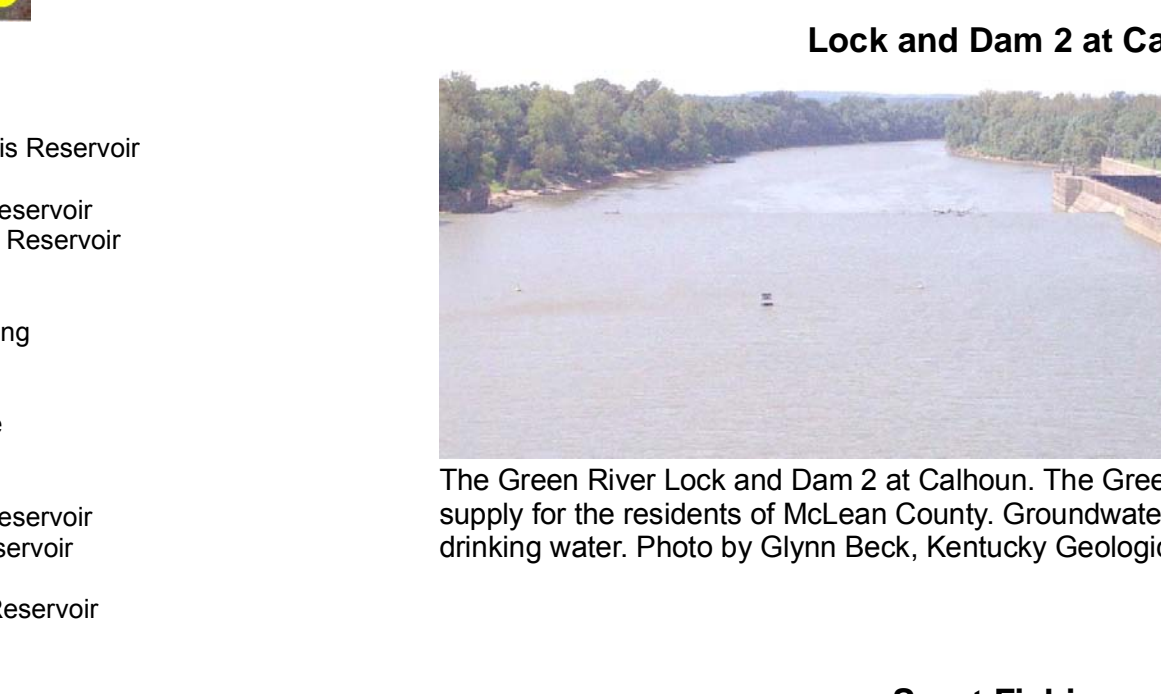
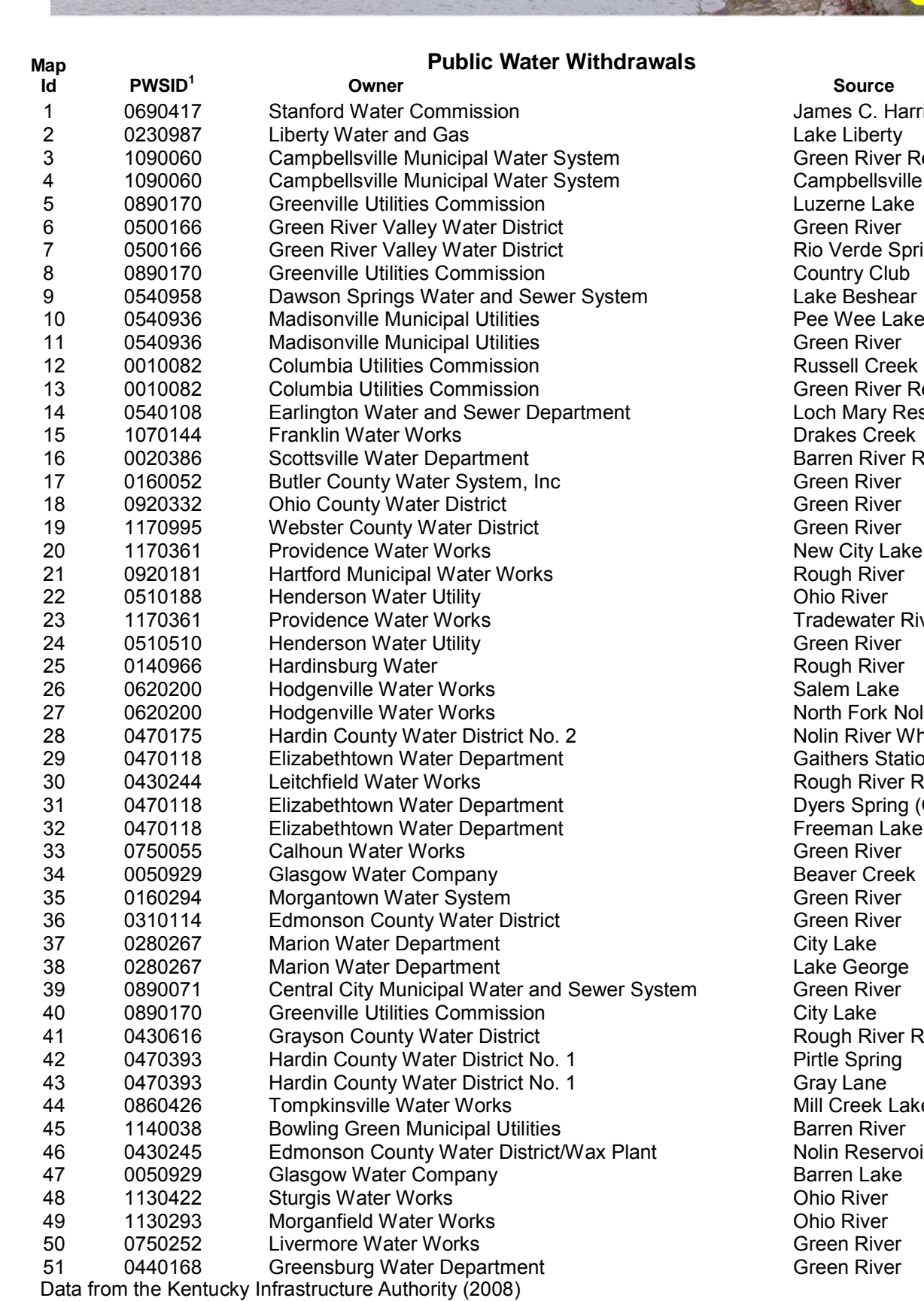
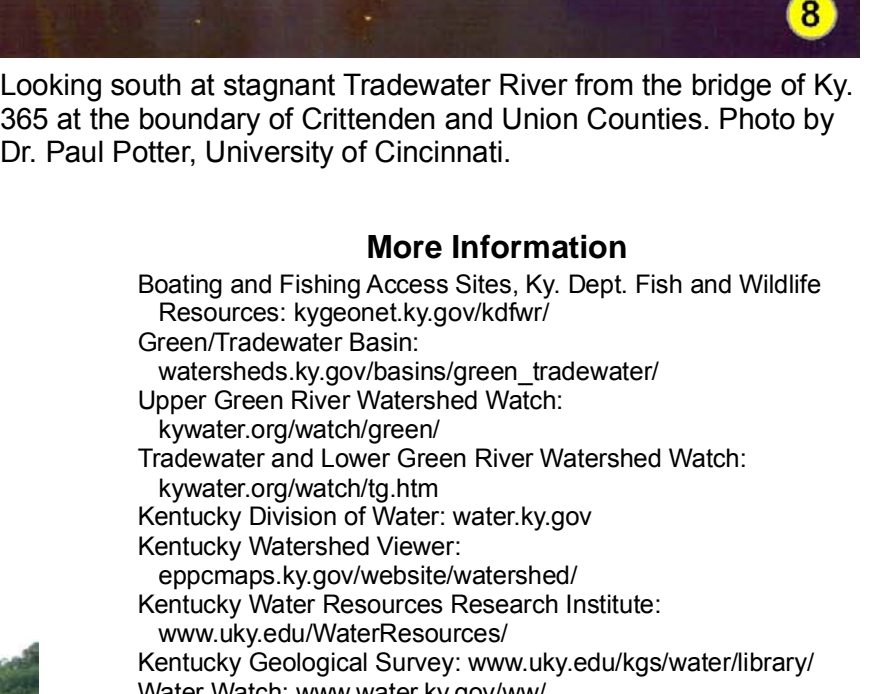
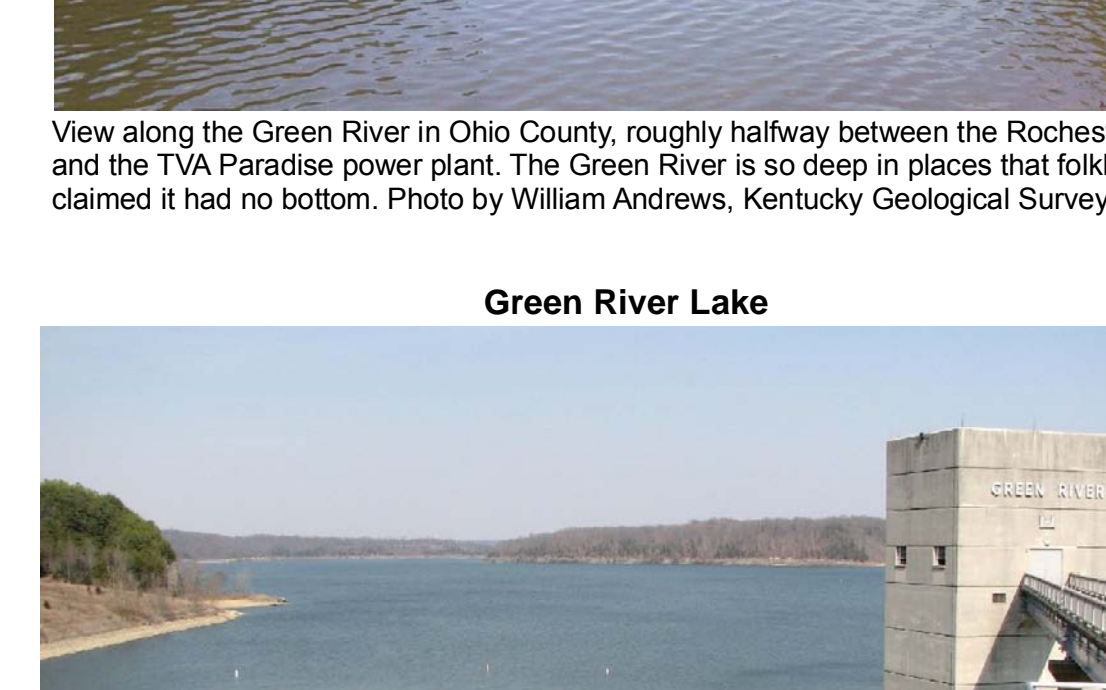
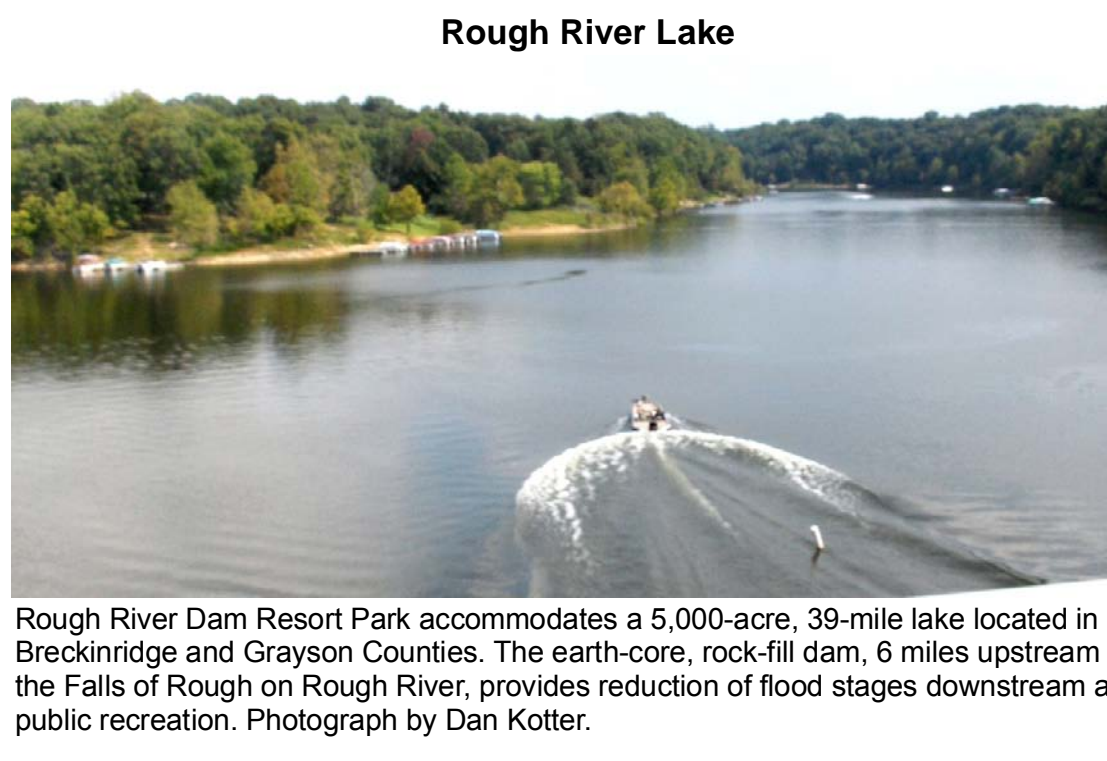
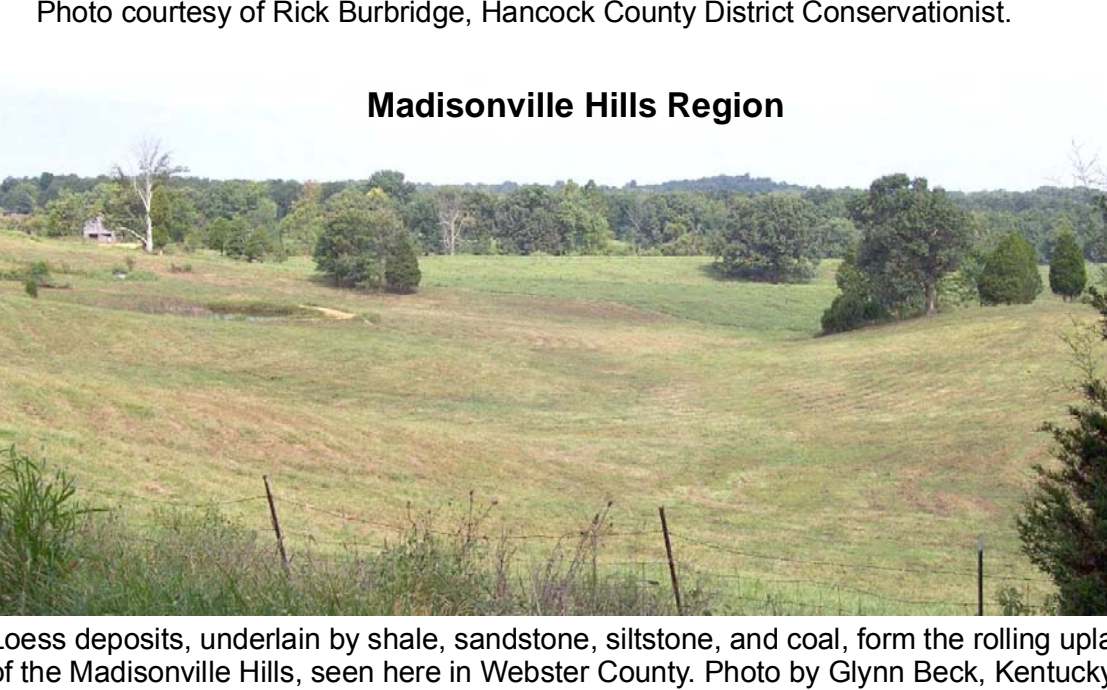
Thanks to Terry Hounshell and Meg Smith, Kentucky Geological Survey, for cartographic and editorial improvements. Thanks to Kim and Kent Anness, Kentucky Division of Geographic Information, for base-map data.



Public Water Withdrawals

| Map ID | PWSID# | Owner | Source |
|--------|---------|---|---------------------------------|
| 1 | 0690417 | Starford Water Commission | James C. Harris Reservoir |
| 2 | 0220867 | Liberty Water and Gas | Lake Liberty |
| 3 | 1000060 | Campbellsville Municipal Water System | Green River Reservoir |
| 4 | 1000060 | Campbellsville Municipal Water System | Campbellsville Reservoir |
| 5 | 0890170 | Greenville Utilities Commission | Luzerne Lake |
| 6 | 0500166 | Green River Valley Water District | Green River |
| 7 | 0500166 | Green River Valley Water District | Ro. Verde Spring |
| 8 | 0890170 | Greenville Utilities Commission | Country Club |
| 9 | 0540936 | Dawson Springs Water and Sewer System | Lake Beehear |
| 10 | 0540936 | Madisonville Municipal Utilities | Free Wee Lake |
| 11 | 0540936 | Madisonville Municipal Utilities | Green River |
| 12 | 0010082 | Columbia Utilities Commission | Russell Creek |
| 13 | 0010082 | Columbia Utilities Commission | Loch Mary Reservoir |
| 14 | 0540108 | Earrington Water and Sewer Department | Loch Mary Reservoir |
| 15 | 1070144 | Franklin Water Works | Drakes Creek |
| 16 | 0020386 | Scottsville Water Department | Barren River Reservoir |
| 17 | 0160052 | Butler County Water System, Inc. | Green River |
| 18 | 0903332 | Ohio County Water District | Green River |
| 19 | 1170965 | Webster County Water District | Green River |
| 20 | 1170965 | Providence Water Works | New City Lake |
| 21 | 0920181 | Hartford Municipal Water Works | Rough River |
| 22 | 0510188 | Henderson Water Utility | Ohio River |
| 23 | 1170965 | Providence Water Works | Tradewater River |
| 24 | 0510188 | Henderson Water Utility | Green River |
| 25 | 0140966 | Hardinburg Water | Hardinburg Reservoir |
| 26 | 0620200 | Hodgenville Water Works | Salem Lake |
| 27 | 0620200 | Hodgenville Water Works | North Fork Nolich River |
| 28 | 0470115 | Harlin County Water District No. 2 | White Mills Spring/Nolich River |
| 29 | 0470118 | Elizabethtown Water Department | Galthers Station Spring |
| 30 | 0470118 | Elizabethtown Water Department | Leitchfield Water Works |
| 31 | 0470118 | Elizabethtown Water Department | Dyers Spring (Old City) |
| 32 | 0470118 | Elizabethtown Water Department | Freeman Lake |
| 33 | 0720055 | Calhoun Water Works | Green River |
| 34 | 0060929 | Glasgow Water Company | Beaver Creek |
| 35 | 0160052 | Morgantown Water System | Green River |
| 36 | 0310114 | Edmondson County Water District | Green River |
| 37 | 0250282 | Marion Water Department | City Lake |
| 38 | 0282627 | Marion Water Department | Lake George |
| 39 | 0890071 | Central City Municipal Water and Sewer System | Green River |
| 40 | 0890071 | Greenville Utilities Commission | City Lake |
| 41 | 0430616 | Grayson County Water District | Rough River Reservoir |
| 42 | 0470393 | Hardin County Water District No. 1 | Gray Lane |
| 43 | 0470393 | Hardin County Water District No. 1 | Milk Creek Lake |
| 44 | 0960426 | Tompkinsville Water Works | Barren River |
| 45 | 0750252 | Bowling Green Municipal Utilities | Bowling Green Reservoir |
| 46 | 0430245 | Edmondson County Water District/Wax Plant | Green River |
| 47 | 0060929 | Glasgow Water Company | Glasgow Reservoir |
| 48 | 1130422 | Sturgis Water Works | Ohio River |
| 49 | 1130293 | Morganfield Water Works | Ohio River |
| 50 | 0750252 | Livemore Water Works | Green River |
| 51 | 0460168 | Greenburg Water Department | Green River |

Data from the Kentucky Infrastructure Authority (2008)
Public Water System Identification Number



Large Boat Ramp Information

| Water Body | Name | Directions | Fee | Latitude | Longitude |
|--------------------|-----------------------------|--|-----|----------|-----------|
| Barren River Lake | Narrow Marina | U.S. 31E southwest of Glasgow, right on Ky. 1316 (Lucas Road) | No | 36.90202 | -86.07505 |
| Barren River Lake | Port Over ramp | U.S. 31E northeast of Scottsville, left on Ky. 262, right on Port Over Boat ramp before crossing dam | Yes | 36.88975 | -86.12388 |
| Barren River Lake | State Park ramp | U.S. 31E southwest of Glasgow, right at state park entrance | No | 36.87158 | -86.07070 |
| Ohio River-Central | Owensboro English Park | U.S. 431 north of Owensboro, right on Second Street, turn left onto Harring Lane, right into park | No | 37.7818 | -87.11227 |
| Ohio River-Central | Uniontown | Ky. 100 north of Morganfield past food wall to Uniontown boat ramp | No | 37.77471 | -87.93333 |
| Ohio River-Central | Hawesville | U.S. 60 in Hawesville, first street north of courthouse, follow levee to Boatage passage to park | Yes | 37.82139 | -87.46562 |
| Ohio River-Lower | Haves Look ramp | U.S. 231 south of Henderson (12 miles) to Cornwell, right on Ky. 403 (0.8 mile) to old ferry landing | No | 37.53482 | -87.25142 |
| Green River-Lower | Calhoun | U.S. 231 south of Henderson (12 miles) to Cornwell, right on Ky. 269 for 2.5 miles, left on Barnes Road for 1 mile | No | 37.32319 | -87.72452 |
| Green River-Lower | High View Hill ramp | Ky. 81 in Calhoun to Green River boat ramp | No | 37.32640 | -88.81840 |
| Green River-Lower | Jewel City ramp | U.S. 158 west of Calhoun to county line at Ford River Bridge | No | 37.52553 | -87.35669 |
| Green River-Lower | Livemore ramp | Ky. 126 east of Calhoun to Livemore, right on U.S. 431, right on Third Street, left on Main Street | No | 37.48575 | -87.15374 |
| Green River-Lower | Old Endowed Ferry | Ky. 102 west of Calhoun to Sebeys, Ky. 86 west to road, left on backstop road to landing | No | 37.48575 | -87.15374 |
| Green River-Lower | Paradise ramp | Ky. 176 east of Greenville to Drakeboro, U.S. 431 to Paradise, left on Rockport Paradise Head Road, first gravel road on right to ramp | No | 37.27391 | -86.98441 |
| Green River-Lower | Reservoir Avenue ramp | Ky. 180 north of Greenville to Central City, Ky. 70 east to road, right on Ky. 277, right on Ky. 1375, second backstop road to left | No | 37.21769 | -86.90446 |
| Green River-Lower | Rochester dam | Ky. 70 west of Morganfield to Rochester, Ky. 268 north to river | No | 37.21482 | -86.98368 |
| Green River-Lower | Russell ramp | Ky. 81 south of Calhoun, right on Walnut Street, left at Second Street to boat ramp | No | 37.52009 | -87.20814 |
| Green River-Lower | Spottsville | U.S. 60 east of Henderson, turn right on bridge on Harbrett Mill Road to boat ramp | No | 37.85518 | -87.42818 |
| Green River-Lower | Woodbury ramp | Ky. 403 south of Morganfield (6 miles) ramp upstream of dam | No | 37.18964 | -86.63228 |
| Lake Malone | Lake Malone State Park | Ky. 176 east of Henderson to Drakeboro, U.S. 431 south to Dummar, Ky. 973 west to Lake Malone State Park sign | No | 37.07953 | -87.03435 |
| Nolin River Lake | Beer Creek ramp | Ky. 229 north of Brownsville, Ky. 728 east, Ky. 1827 north, follow signs to ramp | No | 37.23886 | -86.71360 |
| Nolin River Lake | Dam ramp | Ky. 229 north of Brownsville, Ky. 728 east, follow signs to ramp | Yes | 37.27394 | -86.24264 |
| Nolin River Lake | Doyle Creek ramp | Ky. 89 north of Lawrenceville, U.S. 431 to Doyle Creek, right on Doyle Creek | Yes | 37.13980 | -86.13501 |
| Nolin River Lake | Iberia | Ky. 229 south of Leitchfield to Smyth City, left on Ky. 226 to Phenix, right on Ky. 88 to Iberia sign | Yes | 37.36879 | -86.10031 |
| Nolin River Lake | Moudier ramp | Ky. 229 north of Brownsville, right on Ky. 2007, boat ramp at end of road | No | 37.14447 | -86.23139 |
| Nolin River Lake | Wax ramp | Ky. 229 south of Leitchfield to Smyth City, left on Ky. 226 to Phenix, right on Ky. 88 | Yes | 37.34516 | -86.12468 |
| Ohio River-Central | Henderson | U.S. 60 west of Henderson, right on Henderson, right on Henderson, right on Henderson | No | 37.52111 | -86.92324 |
| Ohio River-Central | Leasport ramp | U.S. 60 west of Henderson, right on Leasport, Ky. 657 north, right on Ky. 334 (1 mile), turn on Morons Lane, left on Riverview Drive | No | 37.81423 | -87.15047 |
| Ohio River-Central | Little Hurricane boat ramp | Ky. 229 south of Leitchfield (2 miles), left on Ky. 1061, left at park entrance | No | 37.88866 | -87.70853 |
| Ohio River-Central | Sloughs North Dock | Ky. 229 south of Leitchfield (2 miles), left on Ky. 1061, left at park entrance | Yes | 37.85156 | -86.93482 |
| Rough River Lake | Adair ramp | U.S. 60 west of Henderson, right on Ky. 136, right on Ky. 288 to Sloughs Wildlife Management Area | Yes | 37.57209 | -86.42656 |
| Rough River Lake | Cave Creek ramp | Western Kentucky Parkway west of Leitchfield to Caneyville, Ky. 79 north, right on Ky. 736 to ramp site | Yes | 37.94377 | -87.75008 |
| Rough River Lake | Saundersville Unit Slough | Ky. 303 west of Uniontown to Ky. 289, Ky. 359 to Ky. 136 north, look for Sloughs Wildlife Management Area signs | No | 37.46887 | -86.09159 |
| Ohio River-West | Old Lock & Dam 50 | Ky. 81 north of Martin, right on Ky. 387 to end of road | Yes | 37.29189 | -86.28359 |
| Green River | State Marina | Ky. 52 east of Campbellsville (15 miles) to ramp | No | 37.20734 | -86.34311 |
| Green River Lake | State Park Lake Valley site | Ky. 52 east of Campbellsville (2 miles), left on Ky. 1061, follow signs to marina | Yes | 37.20734 | -86.34311 |
| Rough River Lake | Laurel Branch ramp | Ky. 229 south of Leitchfield to Smyth City, left on Ky. 110 to lake | Yes | 37.60560 | -86.45006 |
| Rough River Lake | North Fork ramp | Ky. 229 south of Leitchfield (2 miles), left on Ky. 1061, left at park entrance | Yes | 37.61271 | -86.45545 |
| Rough River Lake | Peter Cave ramp | Ky. 229 south of Leitchfield, left on Ky. 737 to ramp site | Yes | 37.56145 | -86.35228 |
| Ohio River-West | State Park Marina | U.S. 60 north of Smithland, left on Ky. 137 | Yes | 37.91094 | -86.50773 |
| Ohio River-West | Birchville ramp | U.S. 60 north of Smithland, left on Ky. 137 | No | 37.22037 | -86.45189 |
| Ohio River-West | Hamblin | U.S. 60 north of Smithland, left on Ky. 137 | Yes | 37.12166 | -86.45189 |
| Green River Lake | Holmes Bend ramp | Ky. 85 north of Columbia, right on Ky. 551, left on Holmes Bend Road | Yes | 37.22421 | -86.29344 |

Data from the Kentucky Department of Fish and Wildlife Resources. For information on the more than 150 access points for small boats throughout the basin, go to kygov.net/kygov/water.htm.