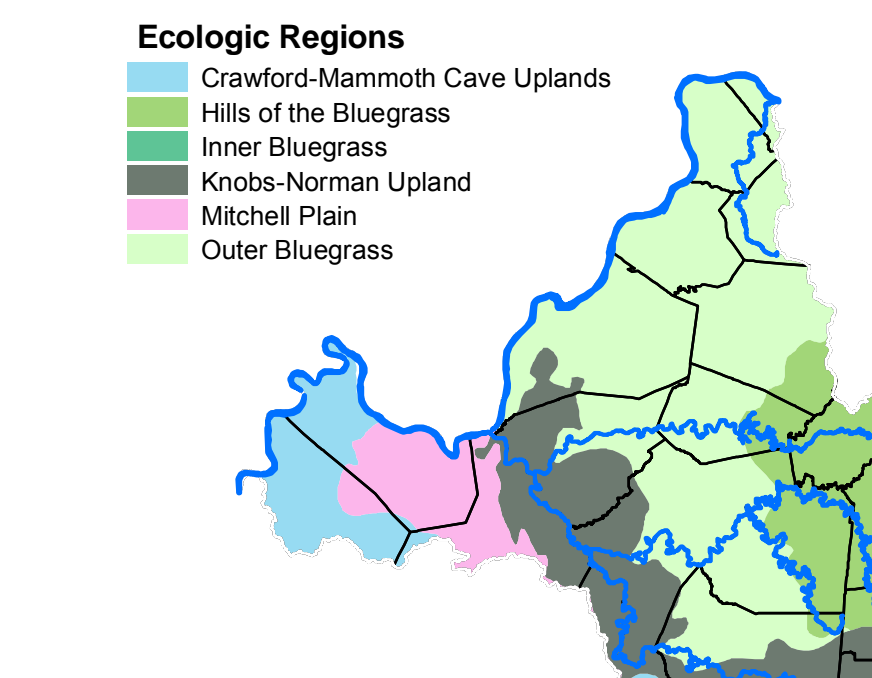
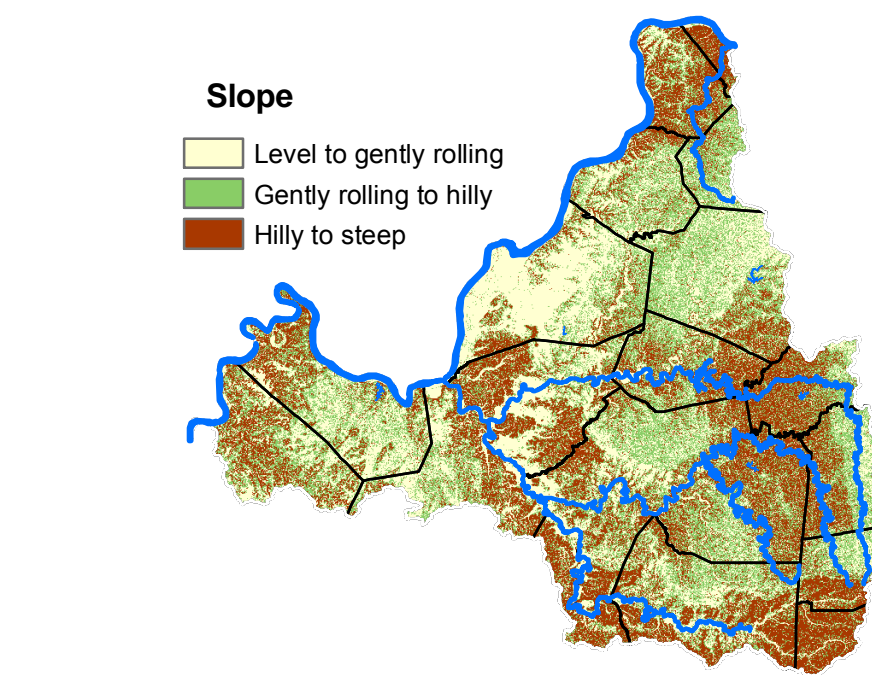
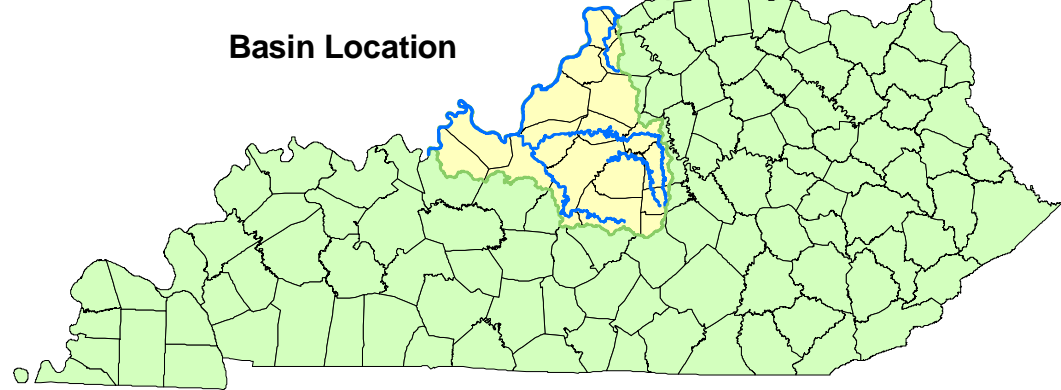


Salt River Basin

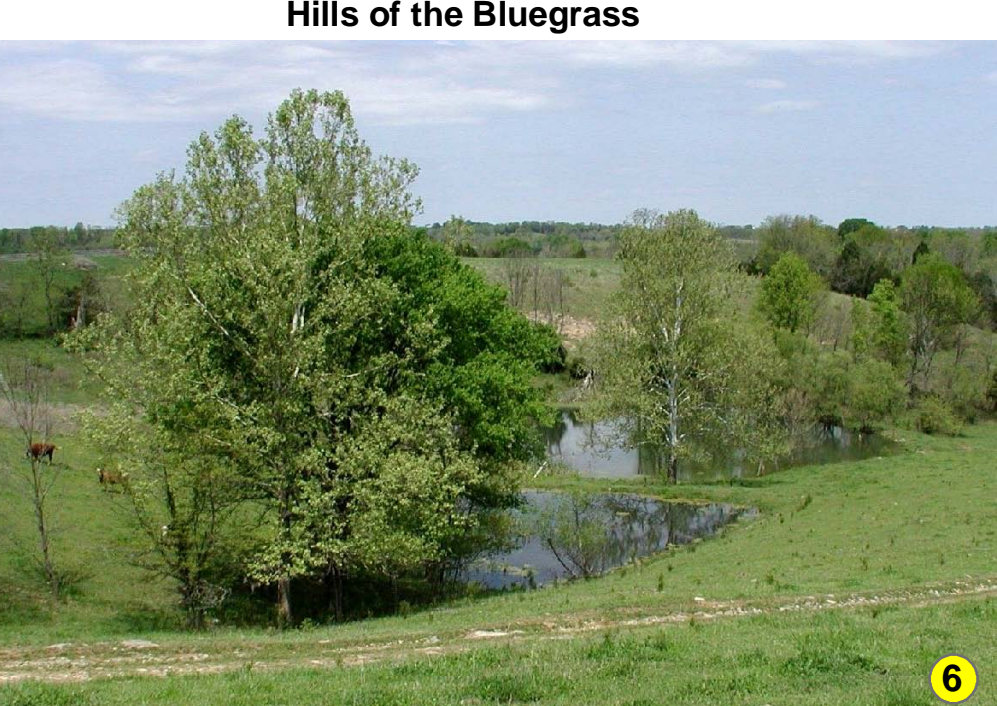


Data from the U.S. Environmental Protection Agency:
epa.gov/wed/pages/ecoregions_ky.htm

More Information
Boating and fishing access sites, Kentucky Department of Fish and Wildlife Resources: kygeonet.ky.gov/kdfwr/
Ohio River Basin Team: watersheds.ky.gov/basins/licking/
Cave Run Lake, U.S. Army Corps of Engineers: www.ri.usace.army.mil/
Kentucky Division of Water: water.ky.gov/
Kentucky Water Resources Research Institute: www.uky.edu/WaterResources/
Kentucky Geological Survey: www.uky.edu/kgs/water/library/
Water Watch Data: kgsmap.uky.edu/website/kww/



Wetlands
The J.C. Williams Wildlife Management Area is located in the floodplains of Beech Fork and Rolling Fork in Nelson County. Such areas are restricted from development. Wetlands in this and other areas are important because they moderate flooding, improve water quality, and provide habitat for wildlife. Photo by Stephen Greb, Kentucky Geological Survey.

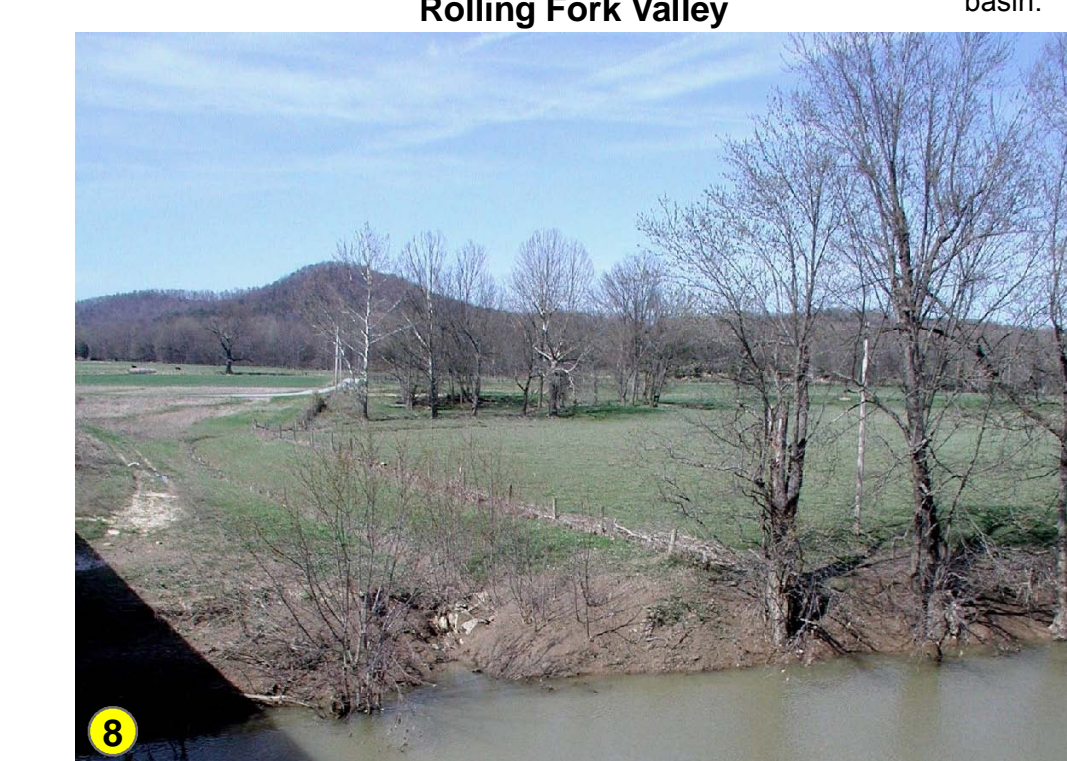


Hills of the Bluegrass
In the Bluegrass Hills Region, seen here in Mercer County, the terrain is hilly and more rugged; pastureland is plentiful and ponds are common. Photo by Stephen Greb, Kentucky Geological Survey.

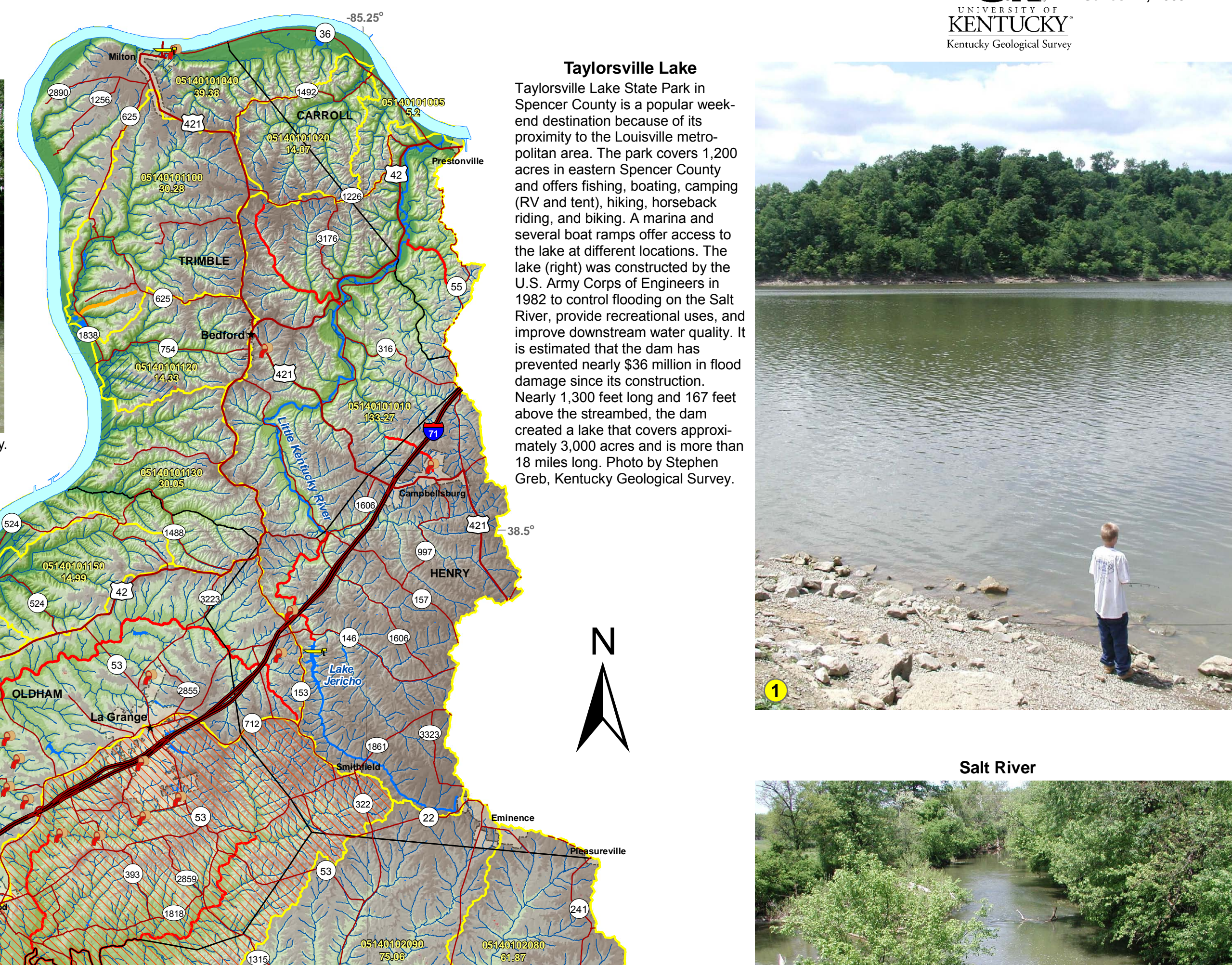
Daniel I. Carey
The Salt River Basin and adjacent Ohio River drainages include over 4,150 square miles in all or parts of 19 counties. The basin contains more than 9,600 miles of streams.
Over 600 miles of streams assessed in the basin by the Kentucky Division of Water do not support designated uses for warm-water aquatic habitat, fish consumption, or primary contact recreation (swimming). Not all streams have been assessed. The percentage of assessed streams not supporting uses was: warm-water aquatic habitat (38 percent); fish consumption (36 percent); primary contact recreation (86 percent). Over 100 miles of streams have been declared special use waters: either exceptional waters or reference reach waters. For more information on the assessment process and stream ratings, go to www.water.ky.gov/swtmdl/303d/.
There are five remediation priority watersheds, including over 600 square miles: primary impacts are pathogens, nutrients, low dissolved oxygen, siltation, and habitat alteration caused by industrial and municipal wastewater discharges, urban runoff, agriculture, habitat modification, and failed septic systems.
There are six man-made lakes in the basin, ranging in size from the 50-acre McNeely Lake to Taylorsville Lake, which provides nearly 3,000 acres for recreation. There are nearly 60,000 acres of wetlands in the basin.



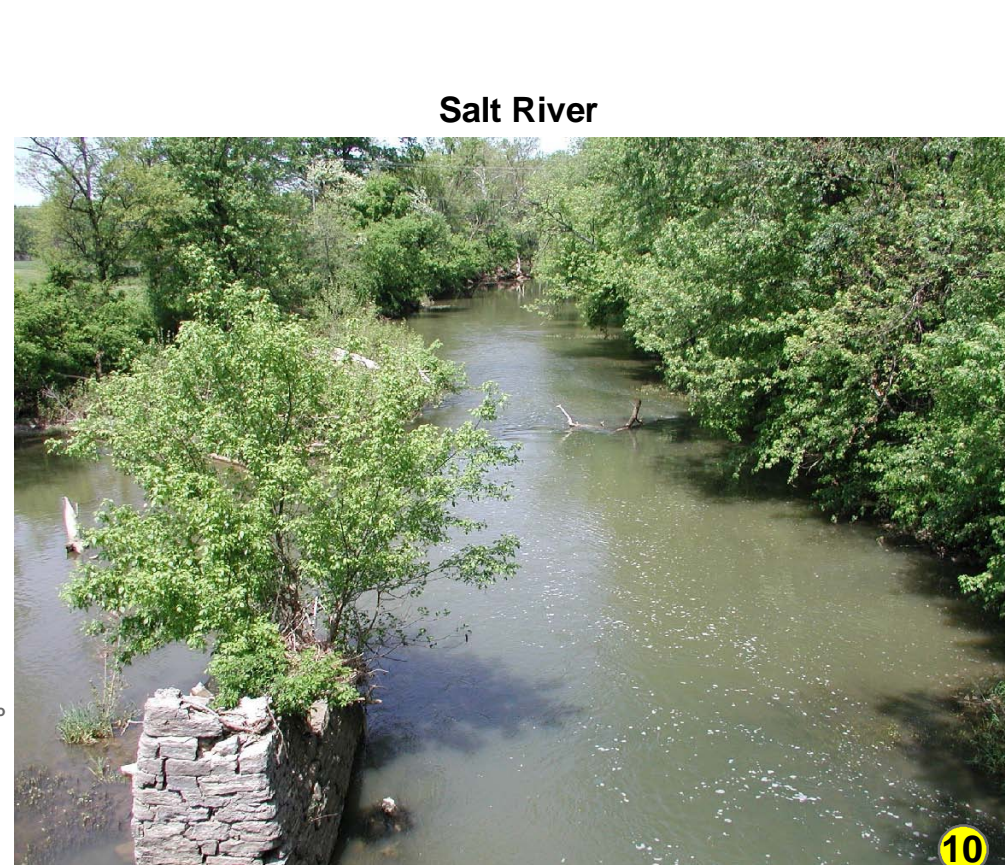
Chaplin River
The beautiful Chaplin River sparkles in the springtime sun in Mercer County. It provides a broad valley through the Bluegrass Hills region of the basin. This part has been designated as a reference reach—representing the stream characteristics that would be desirable for all other streams in the basin. Photo by Stephen Greb, Kentucky Geological Survey.



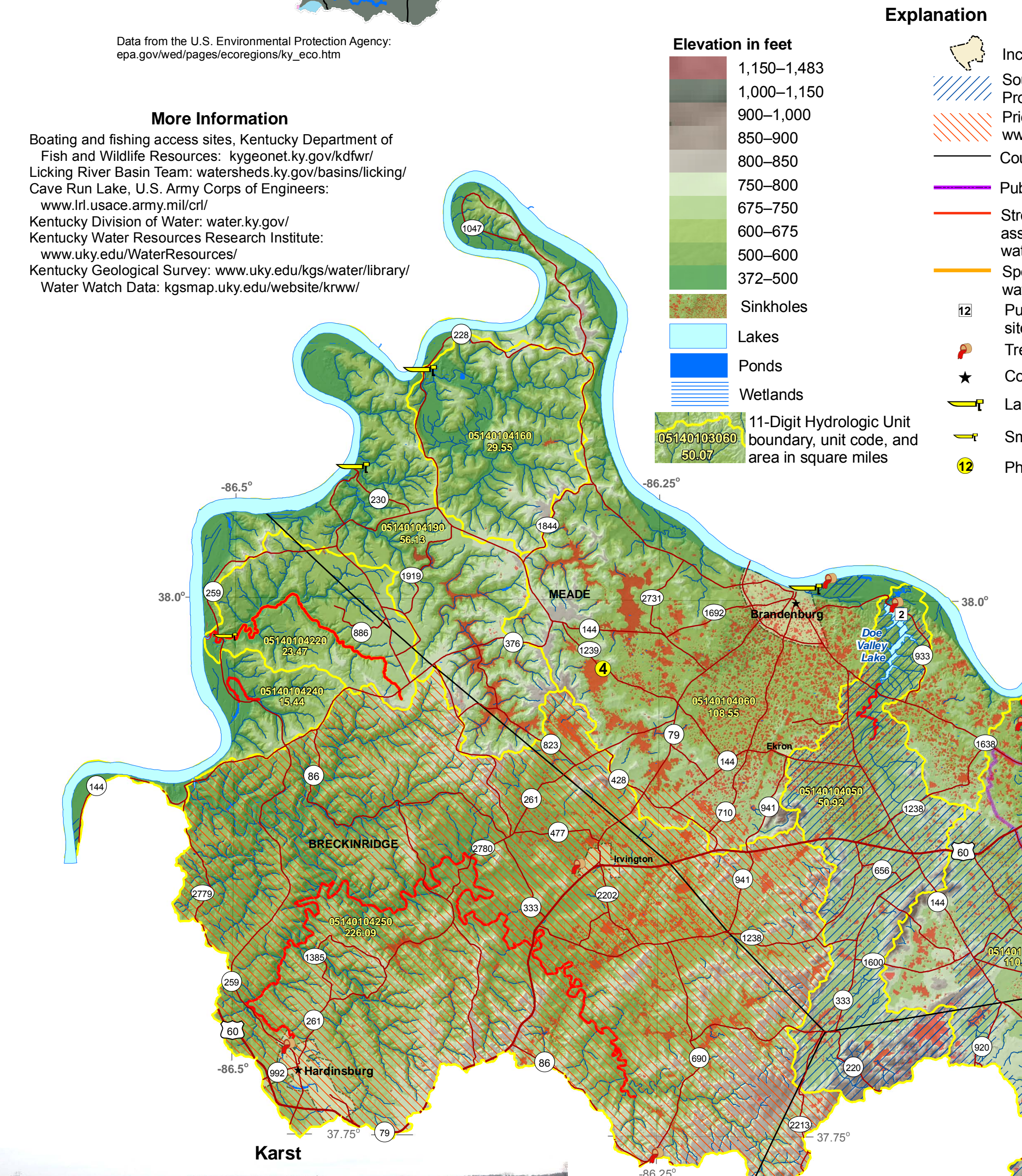
Rolling Fork Valley
The broad flat valley along the Rolling Fork in the Knobs Region, seen here in Nelson County, is believed to be the slightly eroded surface of an Ice Age lake bottom as much as 60 feet thick. The silt and clay alluvium provides land for agriculture and communities. Development must take into consideration potential drainage and flooding problems in order to minimize damages. Photo by Stephen Greb, Kentucky Geological Survey.



Taylorsville Lake
Taylorsville Lake State Park in Spencer County is a popular weekend destination because of its proximity to the Louisville metropolitan area. The park covers 1,200 acres in eastern Spencer County and offers fishing, boating, camping (RV and tent), hiking, horseback riding, and biking. A marina and several boat ramps offer access to the lake at different locations. The lake (right) was constructed by the U.S. Army Corps of Engineers in 1982 to control flooding on the Salt River, provide recreational uses, and improve downstream water quality. It is estimated that the dam has prevented nearly \$36 million in flood damage since its construction. Nearly 1,300 feet long and 167 feet above the streambed, the dam created a lake that covers approximately 3,000 acres and is more than 19 miles long. Photo by Stephen Greb, Kentucky Geological Survey.



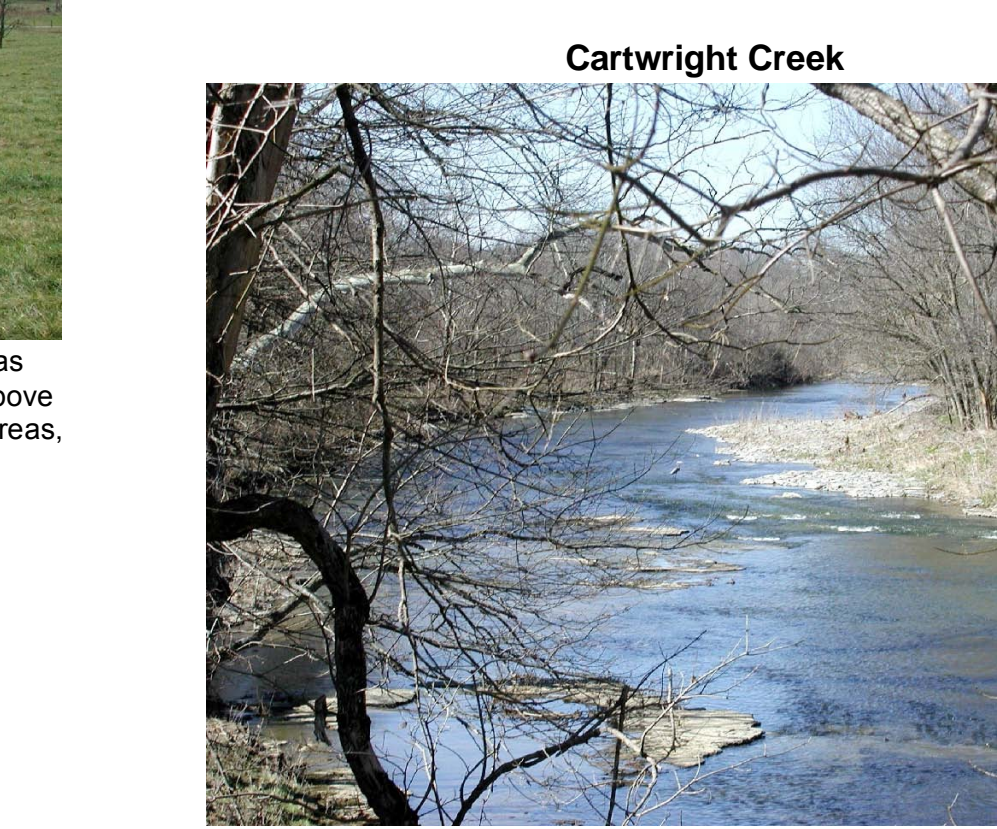
Salt River
The Salt River provides water for distilleries and irrigation in Anderson County. The Salt River gets its name from the many salt licks—important to early settlers—along its course. Near Shepherdsburg in Bullitt County, the river contains a Class 1 rapids. Photo by Stephen Greb, Kentucky Geological Survey.



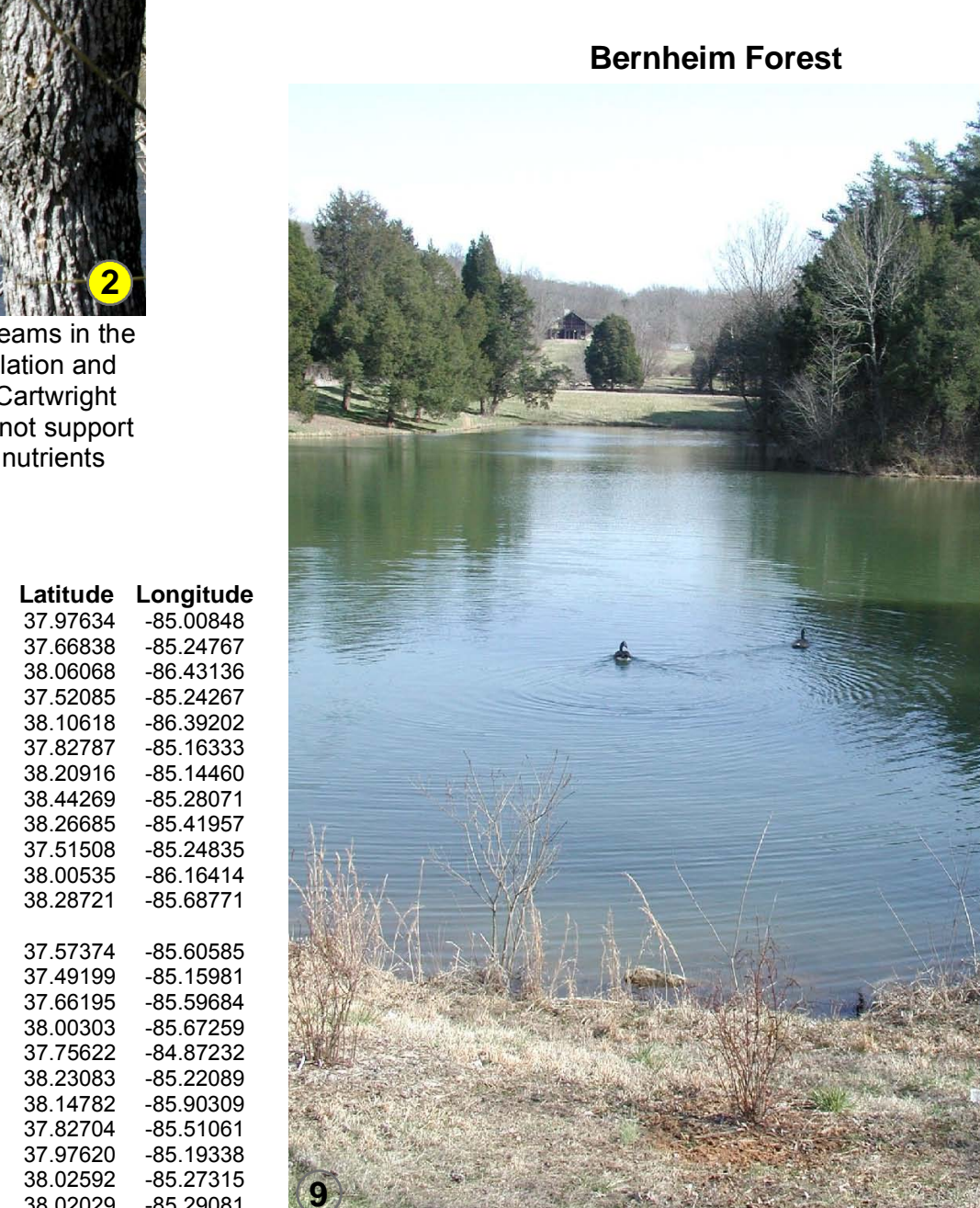
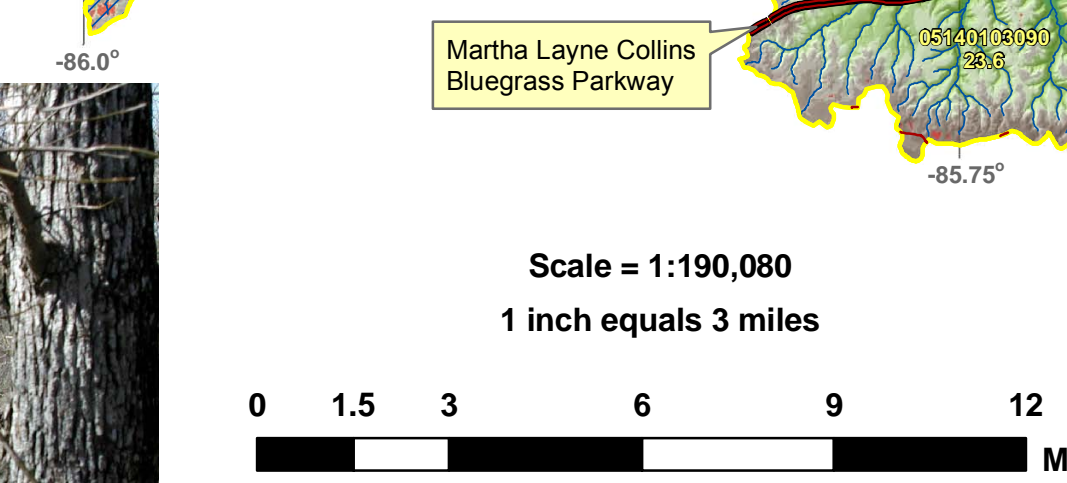
Karst
The underlying limestone provides soils for a strong agricultural economy in karst areas of the basin. Karst is characterized by sinkholes, such as those seen in the pasture above in Meade County. Water moves underground through crevices and conduits in karst areas, and surface streams are few. Photo by Stephen Greb, Kentucky Geological Survey.



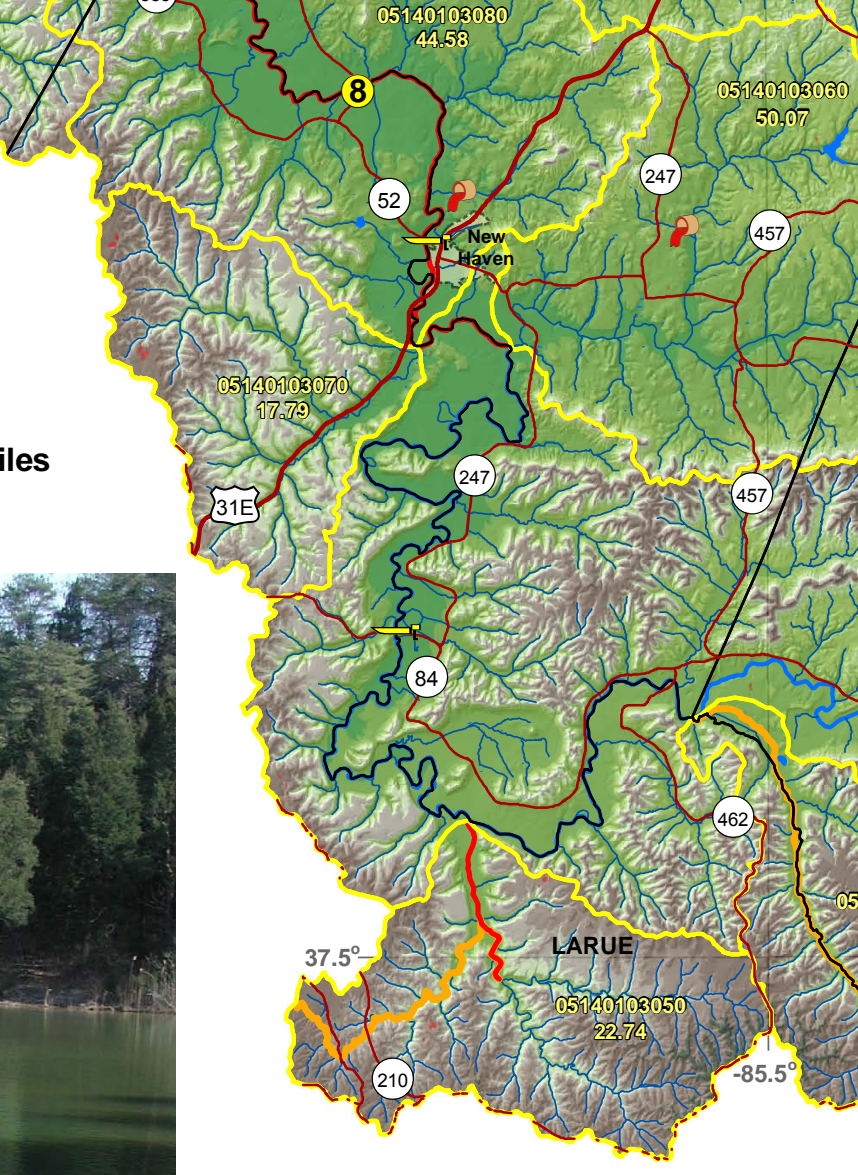
Development
Areas of the basin near Louisville have undergone rapid development. Adequate sewage disposal is an important consideration here, because much of the bedrock and alluvium is unsuitable for septic tank or cesspool methods of disposal. Photo by Bart Davidson, Kentucky Geological Survey.



Cartwright Creek
Cartwright Creek in Washington County is one of many large streams in the basin. Maintaining water quality is important for the human population and the fish and fowl that rely on the streams. The lower reaches of Cartwright Creek only partially support warm-water aquatic habitat, and do not support primary contact recreation, because of fecal coliform, excessive nutrients (eutrophication), and sediment. Photo by Stephen Greb, Kentucky Geological Survey.



Bernheim Forest
Bernheim Arboretum and Research Forest was established in the 1930's in south-central Bullitt County. It has one of the largest collections of American hollies in North America. The park offers miles of hiking trails and numerous public programs. The new visitors center is constructed with a septic system that uses peat filters (green squares) to purify wastes. Photo by Stephen Greb, Kentucky Geological Survey.



North Rolling Fork
The Boyle Dolomite forms the bed of the upper North Rolling Fork in Boyle County. Photo by Stephen Greb, Kentucky Geological Survey.

Water Body	Site Name	Type	Directions	Fee	Latitude	Longitude
Beaver Lake	Beaver ramp	small boat only	U.S. 62 west of Lawrenceburg (7 miles); right on Beaver Lake Road (Ky. 749) to lake	yes	37.97634	-85.00848
Booker Reservoir	Springfield Reservoir	any boat	Ky. 55 south of Springfield; right on Booker Branch Road	no	37.66838	-85.24767
Ohio River-Central	Concordia Park ramp	any boat	Ky. 1692 west of Brandenburg; right on Ky. 144 (10 miles); right on Ky. 230 to Concordia	no	38.90058	-86.43136
Fagan Branch Lake	Fagan Branch ramp	small boat only	Ky. 49 south of Lebanon; right on Coxs Road; right on Calvary Road; right on Fagan Branch Road	no	37.52085	-85.24267
Ohio River-Central	Wolf Creek ramp	any boat	Ky. 226 west of Brandenburg to river	no	38.10618	-86.39222
Willisburg Lake	Willisburg Lake ramp	any boat	Ky. 555 north of Springfield (10 miles); lake located on right	yes	37.82787	-85.19333
Guist Creek Marina	Guist Creek Marina	any boat	U.S. 60 east of Shelbyville; left on Ky. 1871; right on Ky. 1779; entrance on right	yes	38.20916	-85.14460
Lake Jentcho	Lake Jentcho Recreation Area	small boat only	Ky. 148 west of New Castle; left on Ky. 153; left to lake	yes	38.44269	-85.28071
Long Run Park	Long Run Park	small boat only	Gene Snyder Freeway (I-263) to exit 27; east on U.S. 60; left on Flat Rock Road to Long Run Park	no	38.29683	-85.41957
Marion County Lake	Marion County Lake ramp	small boat only	Ky. 49 south of Lebanon; right on Coxs Road; right on Calvary Road; follow signs	no	37.51508	-85.24835
Ohio River-Central	RiverView Park ramp	any boat	In Brandenburg at RiverView Park on Main Street	no	38.05235	-85.16414
Rolling Fork River	Cox's Park	any boat	I-75; exit 2; Zorn Avenue north; right on River Road to park	no	38.28721	-85.68771
Rolling Fork River	Howardsdown ramp	small boat only	U.S. 31E south of Bardstown to New Haven; left on Ky. 52; right on Ky. 247 to Howardsdown; right on Ky. 84; ramp is at the bridge	no	37.57374	-85.60585
Rolling Fork River	Ky. 49 bridge ramp	small boat only	Ky. 49 south of Lebanon; Rolling Fork River bridge just west of Bradfordville	no	37.49199	-85.19581
Rolling Fork River	New Haven ramp	small boat only	U.S. 31E south of Bardstown to New Haven; right on Ky. 52 (0.8 mile); left to ramp	no	37.60195	-85.59684
Rolling Fork River	KOA Camp	small boat only	Ky. 44 east of Shepherdsville to KOA Campground (KOA campground fee)	yes	38.03263	-85.07259
Salt River	Salt River ramp 3	small boat only	Ky. 152 west of Harrodsburg; turn left just before the bridge; ramp is behind the old municipal swimming pool	no	37.75622	-84.87232
Shelby Lake	City of Shelbyville	any boat	Ky. 53 in Shelbyville; right on Burke Branch Road; right at Clear Creek Park; ramp located in park	yes	38.23063	-85.22089
Ohio River-Louisville	Greenwood ramp	any boat	Gene Snyder Freeway (I-263) west of Louisville; Dove Highway north (U.S. 60); Ky. 1931 west (Greenwood Road)	yes	38.14782	-85.90309
Simpson Lake	Bardstown	small boat only	U.S. 62 west of Bardstown; right on Ky. 2737 to Simpson Lake	yes	37.82704	-85.51061
Taylorsville Lake	Chowning Lane	any boat	Ky. 55 south of Taylorsville; left on Ky. 1066; left on Highway Church Road; left on Chowning Lane	no	37.07620	-85.19338
Taylorsville Lake	Possum Ridge (state park ramp)	any boat	Ky. 44 east of Taylorsville; right on Ky. 248; follow signs to entrance of state park at Possum Ridge Road	no	38.02592	-85.27315
Taylorsville Lake	Settlers Trace	any boat	Ky. 44 east of Taylorsville; right on Ky. 2239; left on Boat Ramp Road	no	38.02029	-85.29061
Taylorsville Lake	Van Buren ramp	any boat	Ky. 44 west of Lawrenceburg; left on Ky. 1570; left on Ky. 248; right on Ky. 1570 to ramp	no	37.87396	-85.19796
Yellowbank Creek	Yellowbank Wildlife Management Area	small boat only	Ky. 259 north of Harrodsburg to Yellowbank Wildlife Management Area	no	37.98138	-86.50585
McNeely Lake	McNeely boat ramp	small boat only	Gene Snyder Freeway (I-263) south of Louisville to exit 15; south on Beulah Church Road to dead end; right on Old Bates Road; left on Cooper Chapel Road	no	38.10524	-85.63580
Ohio River-Louisville	Milton ramp	small boat only	U.S. 421 north of Bedford to Milton; right on Ky. 38	no	38.72583	-85.36888
Ohio River-Louisville	West Point ramp-Salt River	any boat	U.S. 31 west in West Point; turn on only backloop road running east from U.S. 31W	yes	37.99911	-85.93996
Ohio River-Louisville	Westport	any boat	Ky. 53 north of LaGrange; left on U.S. 42; right on Ky. 524 to Westport	no	38.47890	-85.48051

Data from the Kentucky Department of Fish and Wildlife Resources. For boat access information throughout the basin, go to kygeonet.ky.gov/kdfwr/.

Acknowledgments
Thanks to Terry Hounshell and Meg Smath, Kentucky Geological Survey, for cartographic and editorial improvements. Thanks to Kim and Kent Anness, Kentucky Division of Geographic Information, for base-map data.