

# Lush 'n Lean: Xeriscaping Gardens for Abundant Plant Diversity and Water Conservation



**Marisa Thompson, Ph.D.**

NMSU Urban Extension Horticulture Specialist



Photo credit:  
Albuquerque Bernalillo County Water Utility Authority  
Xeriscaping: Complete How to Guide

<http://xericgardenclub.org/>

Home

Habitat Garden

Xeriscaping

Join

Calendar

About Us

Galleries

Contact



## XERIC GARDEN CLUB *of* ALBUQUERQUE

CONSERVING WATER THROUGH PLANT SELECTION

The Xeric Garden Club of Albuquerque is a non-profit organization and a member of The Council of Albuquerque Garden Clubs, which owns and operates the Albuquerque Garden Center at 10120 Lomas Boulevard NE. Albuquerque NM 87112. The Council maintains demonstration gardens in the adjacent Los Altos Gardens, including the Xeric Wildlife Habitat developed and maintained by the Xeric Garden Club. Garden hours: Monday–Friday 9:30am–2:30pm, April 15–October.

*Our Wildlife Habitat Garden  
at the Albuquerque Garden Center*

All these plants are xeric  
and examples of how colorful  
your garden can be!



*Trips to local  
xeric gardens*



<http://xericgardenclub.org/>

*Special THANKS to the Xeric Club of Albuquerque for EXCELLENT discussion on what Xeriscapes ARE and AREN'T!*



**Do I have to have a yard filled with gravel and a few cacti?**



**Xeriscape is NOT dry only.**



**Xeriscape is NOT only native plants.**



**Xeriscape is NOT just rocks and gravel.**

**Xeriscape is NOT always lawn-less.**







**Xeriscape is NOT boring in design.**

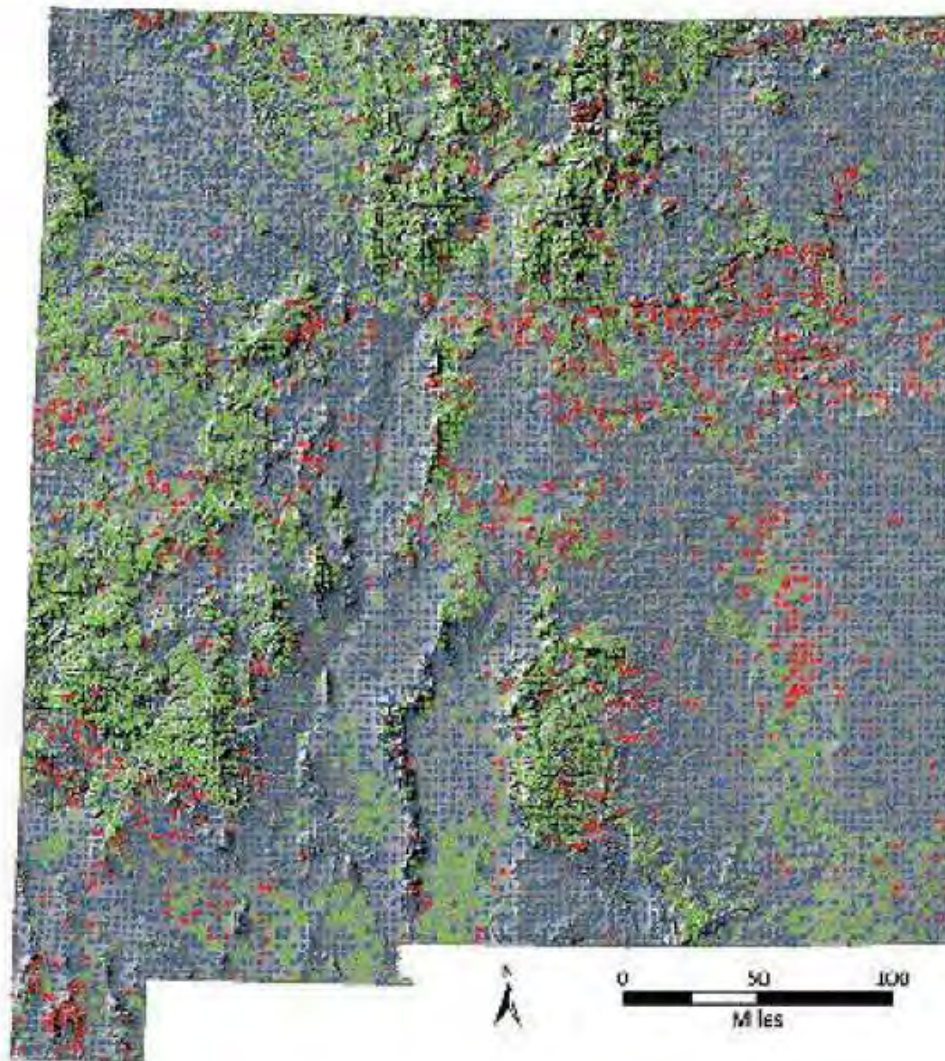






Only one third of NM is naturally forested

- Forest
- Non Forest
- Not sampled



# Why Garden with Native Grasses?

- Minimize soil erosion
- Increase organic matter in the soil
- Low nutrient requirement. No fertilizers needed!
- Low water requirements (once established)
- Habitat for birds, wildlife, native pollinators



*Schizachyrium scoparium*  
Little Bluestem







Hold off until early spring!





*Eragrostis trichodes*  
Sand Lovegrass

**New Mexico Olive**  
aka NM Privet  
*Forestiera neomexicana*



Photo credit: High Country Gardens

# Mulch

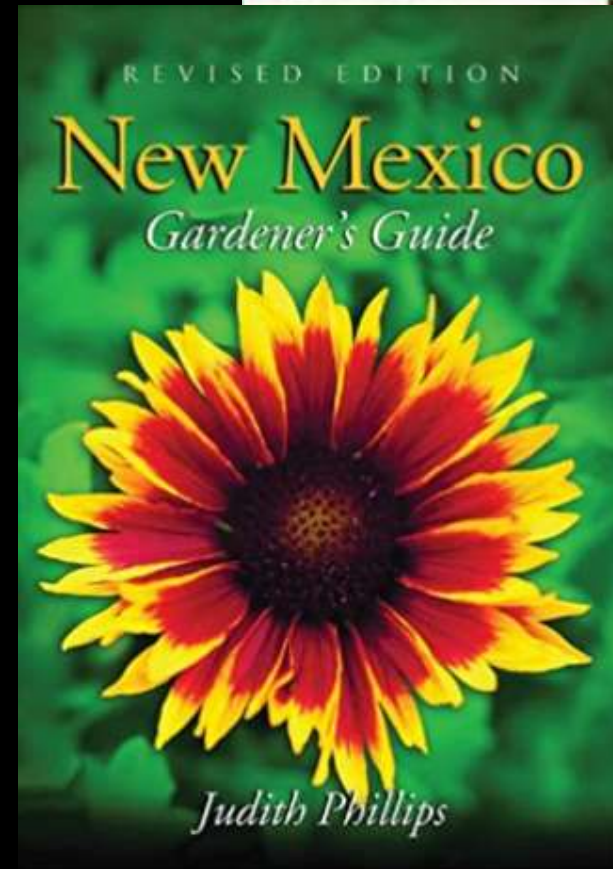
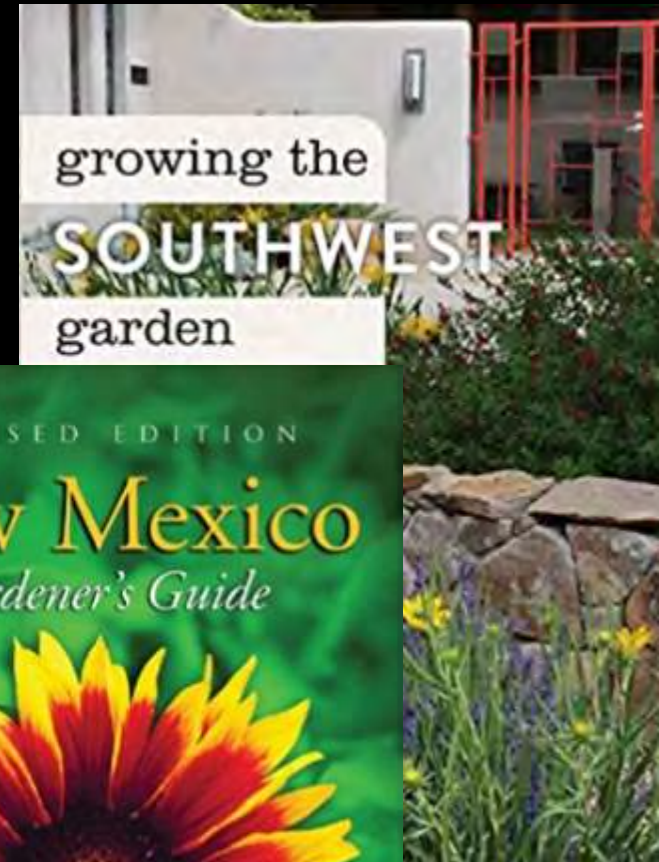
## Benefits

- Moisture retention
- Temperature Regulation
- Weed Control



# Xeriscaping Resources

- NMSU Extension Master Gardener Chapters  
<https://mastergardeners.nmsu.edu/>
- Reference Books
  - Judith Phillips' books!
    - "Growing the Southwest Garden"
    - "New Mexico Gardener's Guide"
- Native Plant Society of NM  
<https://www.npsnm.org/>
- Local Nurseries & Garden Centers
- Xeric Garden Club of Albuquerque  
<http://xericgardenclub.org/>



# MORE Xeriscaping Resources

## Albuquerque Bernalillo County Water Utility Authority

- How-to Guide
- [https://www.abcwua.org/wp-content/uploads/Conservation\\_Rebates/XeriscapeHowTo\\_2020\\_06122020-1.pdf](https://www.abcwua.org/wp-content/uploads/Conservation_Rebates/XeriscapeHowTo_2020_06122020-1.pdf)
- Landscape Tips!
- <https://www.505outside.com/>

## NM's Enchanted Xeriscape Guide

- Office of the State Engineer
- [https://www.ose.state.nm.us/WUC/LearningXeriscape/XeriscapeGuide\\_ScreenResolution.pdf](https://www.ose.state.nm.us/WUC/LearningXeriscape/XeriscapeGuide_ScreenResolution.pdf)

## Xeriscaping in Arizona

- <https://www.amwua.org/landscaping-with-style>



# NMSU Urban Extension Horticulture Program

- Marisa Thompson
    - Educational Programs
    - Research Programs
    - Southwest Yard & Garden Column
- <https://nmsudesertblooms.blogspot.com>
- Workshops!

Email: [desertblooms@nmsu.edu](mailto:desertblooms@nmsu.edu)

Social media handle:  
@NMDesertBlooms

Las Cruces Sun-News

3D

Sunday, January 28, 2018

## The science of pollination strategies

Flower power is usually the easiest way to judge



Southwest Yard and Garden

Marisa Y. Thompson  
Columnist  
Las Cruces Sun-News

**Question:** Is there an easy way to tell if a flower is wind-pollinated or insect-pollinated?

*Leah M., Albuquerque*

**Answer:** This question is a good one because the answer is beautiful. Big, fragrant, flamboyant flowers are a good indicator that an insect or other animal pollinates the plant. When the flowers are tiny, lacking color and inconspicuous, and might be even be considered ugly, they are likely wind-pollinated. Vectors for pollination can be biotic (e.g., insects, bats, birds, humans) or abiotic (e.g., wind, water, self-pollination).

The flower scent, shape and color, and the timing of bloom, can give clues to which insects are involved in pollination. Flowers that reek like dead flesh attract flies. Night-bloomers are often pollinated by nocturnal animals like moths and bats. Generally speaking, bee- and butterfly-pollinated species tend to have flowers with bright colors, nectaries (nectar-secreting glandular organs), and a sweet scent.

Tubular flowers are perfect for animals with long noses or beaks. Ashley Bennett, NMSU Extension integrated pest management specialist, added that some bees are short-tongued and others are long-tongued, which determines what flowers they visit for nectar and end up pollinating. For example, long-tongued bees can access nectar in very narrow, tubular-shaped flowers, like some penstemons, while



A flower under ultraviolet light. WIKIPEDIA COMMONS

gresses to a hot-to-the-touch 114 degree Fahrenheit, and then maintain that exact temperature during the two-day flowering period! You can guess why. Certain scarab beetles that prefer to mate at this temperature are attracted to the heat and end up covered in pollen ready for transport.

When water is a pollination vector, the pollen floats along until it reaches the flower. This is called surface

# Thank you very mulch



**Marisa Thompson**

NMSU Urban Extension Horticulture Specialist

Social Media: @NMDesertBlooms

Blog <https://nmsudesertblooms.blogspot.com>