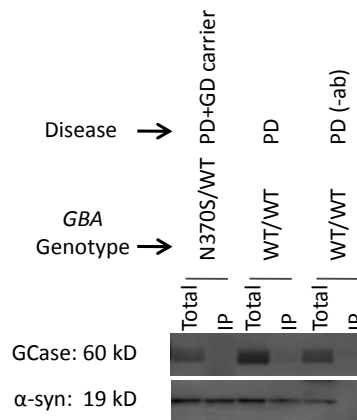


**Figure S5**



**Figure S5.** Immunoprecipitation of GCCase with antibody to  $\alpha$ -syn from brain autopsy samples at pH 7.4. Shown are representative immunoblots (left to right: GD carrier (N370S/WT) with PD; subject with PD (WT/WT); subject with PD (WT/WT) and without primary antibody; top and bottom lanes were detected with antibodies to GCCase and  $\alpha$ -syn, respectively). On Westerns probed with R386 rabbit polyclonal antibody, GCCase usually appears as two bands, corresponding to different glycosylated forms.