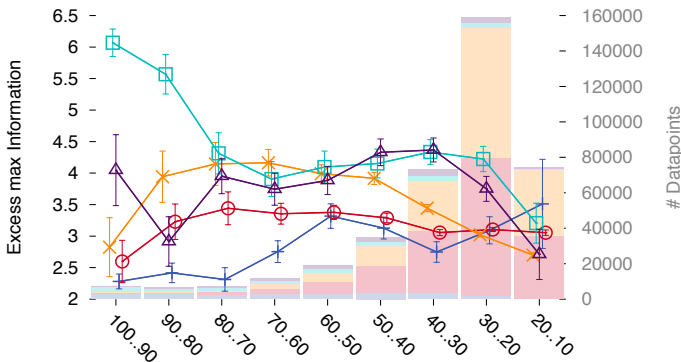
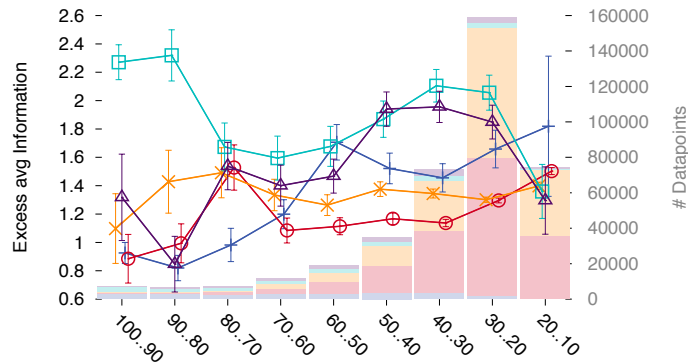


Contrasting different similarity measures (All species)

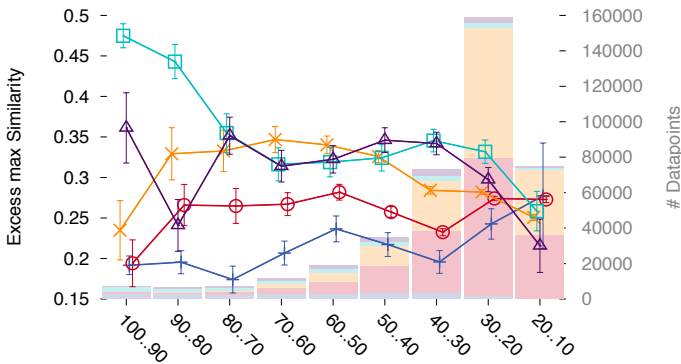
A: Maximum Information Content



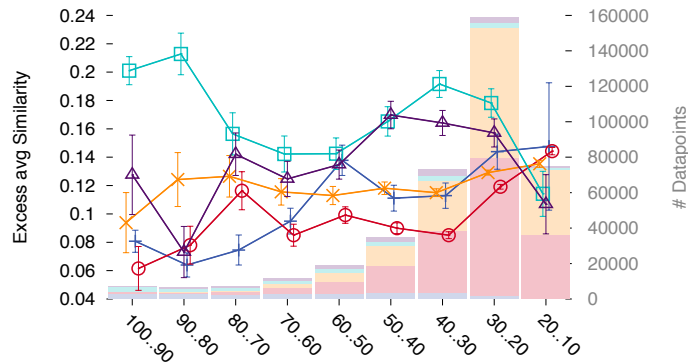
B: Average Information Content



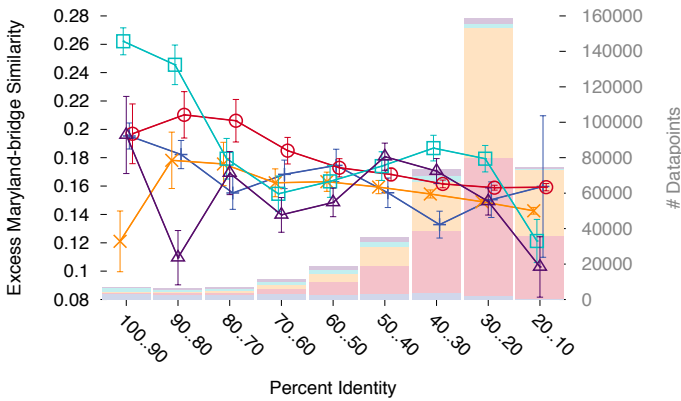
C: Maximum *Lin* Similarity



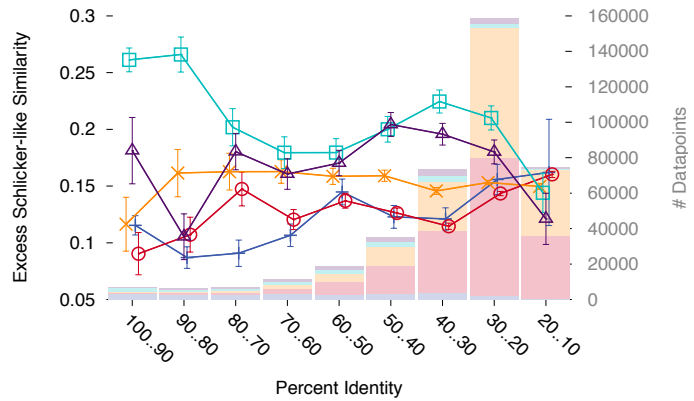
D: Average *Lin* Similarity



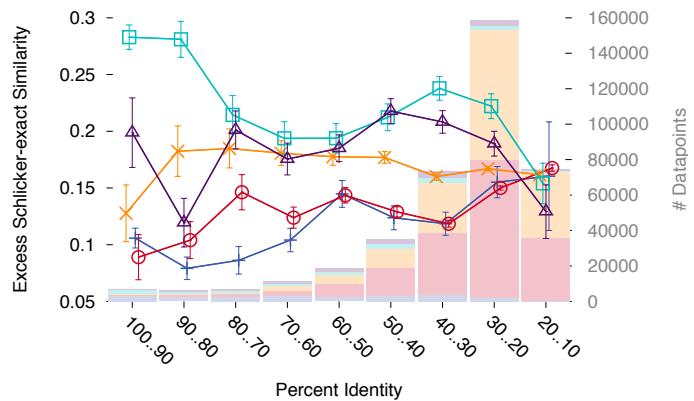
E: Maryland-Bridge Similarity



F: Schlicker-like Similarity



G: Exact Schlicker Similarity



Inparalogs +
 Within-spec. outparalogs ○
 Between-spec. outparalogs ×
 1:1 orthologs □
 Other orthologs △