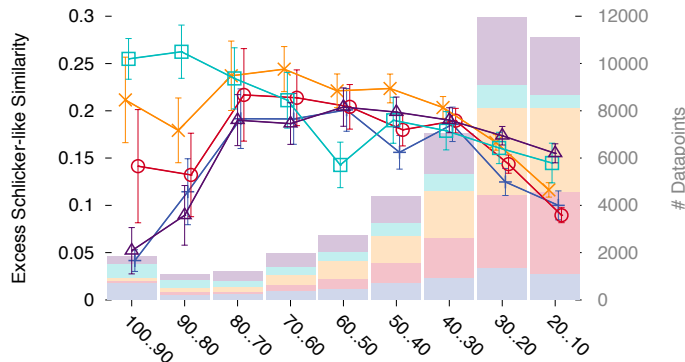
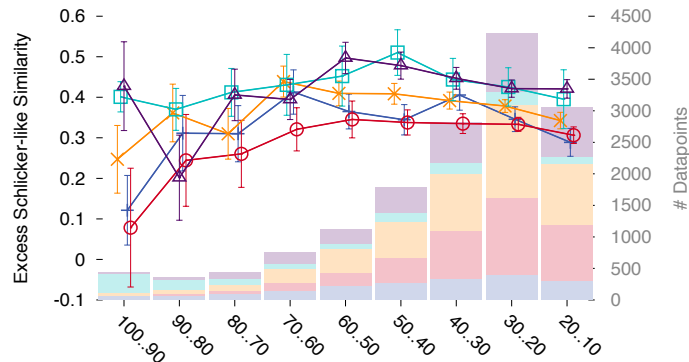


# Ensembl Orthology/Paralogy Predictions

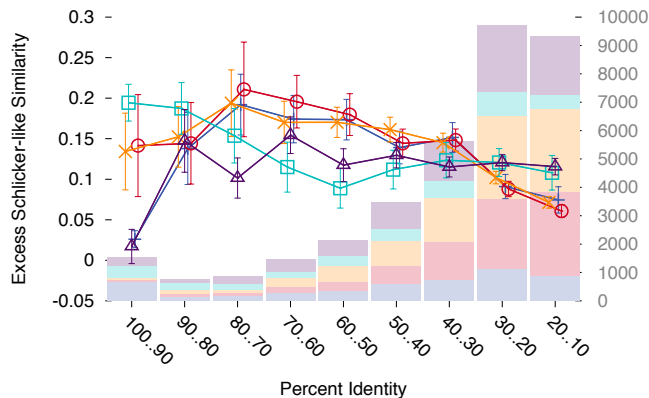
## A: All Ontologies



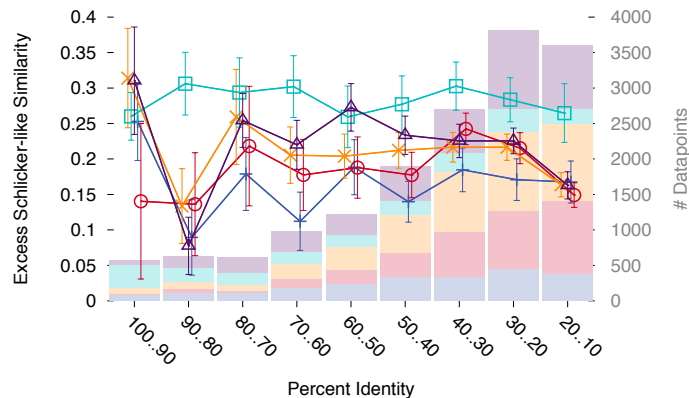
## B: Molecular Function



## C: Biological Process



## B: Cellular Component



Inparalogs +  
 Within-spec. outparalogs ○  
 Between-spec. outparalogs ✕  
 1:1 orthologs □  
 Other orthologs △

Inparalogs +  
 Within-spec. outparalogs ○  
 Between-spec. outparalogs ✕  
 1:1 orthologs □  
 Other orthologs △