

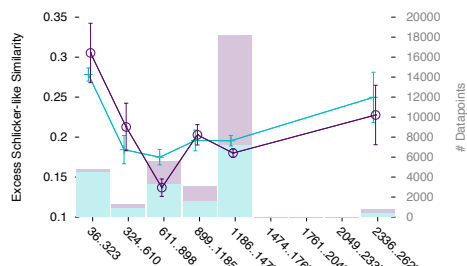
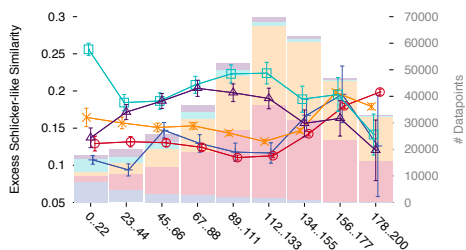
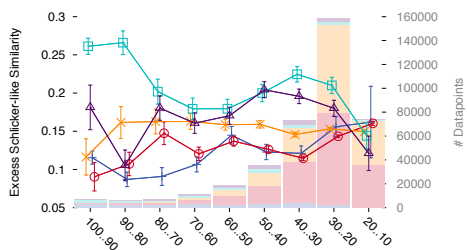
# Different metrics of protein divergence

## A: Percent Identity

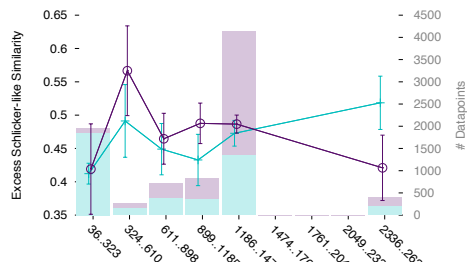
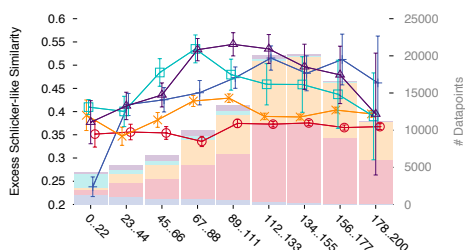
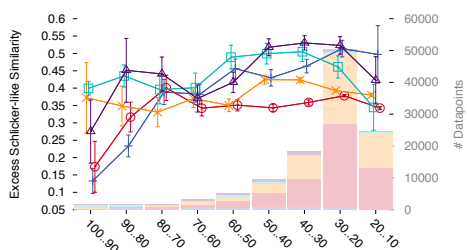
## B: PAM

## C: Time

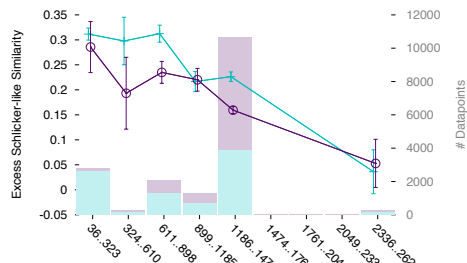
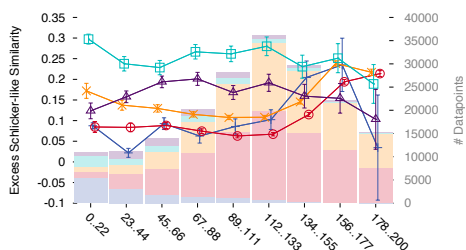
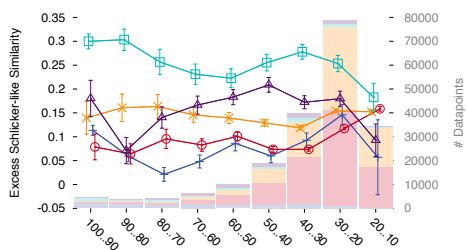
All Ontologies



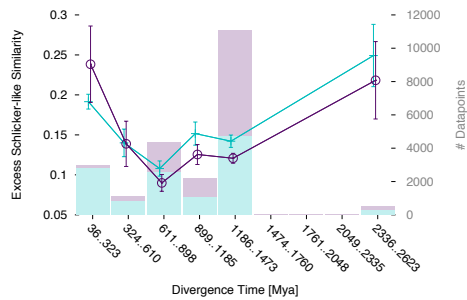
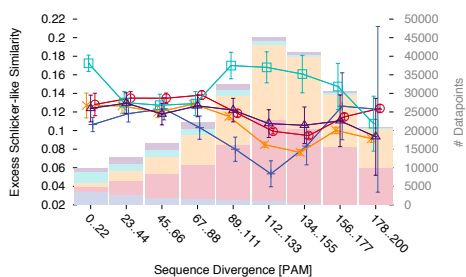
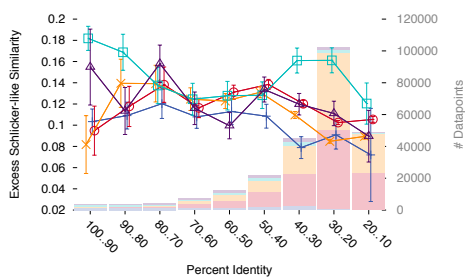
Molecular function



Cellular Component



Biological Process



Inparalogs +  
 Within-spec. outparalogs ⊖  
 Between-spec. outparalogs ✕  
 1:1 orthologs ⊞  
 Other orthologs ⊠