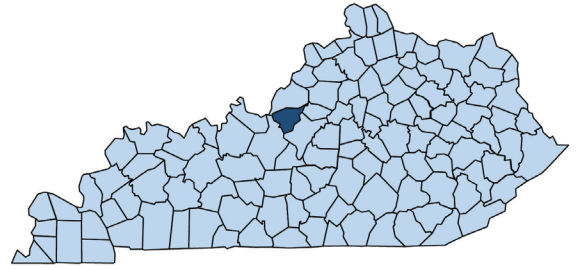


# REPORT TO THE PEOPLE



## Bullitt County 2021



### DID YOU KNOW...

Bullitt County had over 200 families participate in the 1st annual story walk



**Website:** [bullitt.ca.uky.edu](http://bullitt.ca.uky.edu)



**Facebook:** <https://www.facebook.com/bullittcountyextension>

---

**For More Information, Please Contact us at:**

**Bullitt County Extension Office • 502-543-2257 • [bullitt.ext@uky.edu](mailto:bullitt.ext@uky.edu)  
384 Halls Lane, Shepherdsville, KY 40165**

## 4-H Youth Development



The 4-H Bee Club learning how to “Bee Safe” around the hives located at the Bullitt County Extension Office

65

Number of youth who completed a speech or demonstration (PRACTICE)

55

Number of youth who indicated yes or usually to the Common Measures Experience Survey Question #6 - 4-H A place where you get to figure out things for yourself?

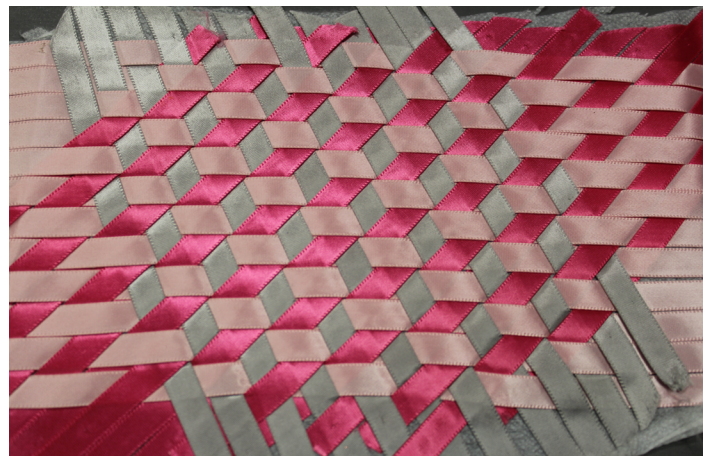
## Community Economic Development

The Bullitt County Cooperative Extension Service built a coalition of multiple community agencies to participate in the Bullitt County Story Path committee. The goal for the committee was to partner together to provide opportunities for families to spend valuable time together, through an educational, healthy experience. With a total of eight different agencies, including city and county government participating as part of the committee, the first Story Path was offered in downtown Mt. Washington.

The City of Mt. Washington worked with downtown businesses to allow display of pages from a story book to be posted in their storefront windows. In 2020 Covid19 changed family traditions, social customs and holiday schedules. After months of social distancing, families were looking for a way to safely spend some time out of the house. Over 200 families participated in the first walk, and more requests have been made to continue the event.

The Bullitt County Cooperative Extension Service partnered with Bullitt County Family Court’s Court Designated Worker program to provide career readiness and workforce preparation skills. The Preparing for Careers series was designed to enable teens to learn tools that will prepare them for the workforce now, after high school, or after college, as well as addressing barriers to higher education. Teens completing the series learned about completing resumes and job applications, soft skills and interview etiquette.

At the conclusion of the series, an evaluation along with an exit mock interview was conducted. The evaluation concluded that all teens reported feeling better prepared when applying for jobs after high school or applying to college and feeling comfortable answering questions during an interview.



Story Walk in the Park in Mount Washington events also including Shakespeare in the Park.

200

Number of program participants who demonstrated an increase in physical activity levels

535

Number of youth who were educated on health and well-being through 4-H programs

## Horticulture



Paul Adkins leading a group of students from Nichols Elementary School Garden Field Day.

200

Number of people who implemented one or more best practices for improving soil quality /soil health

192

Number of youth who demonstrated a skill that was learned or improved by participating in 4-H natural resource programming

## Family and Consumer Sciences

Sewing and handwork can bring great satisfaction to someone who makes a project. When very little cost is associated with a project and personal creativity as a part of the process, the level of personal satisfaction and fulfillment is found to be greater. Pin Weaving is a low cost, personally creative method of using the heritage skill of weaving.

The “It’s So Fine for Home and Family” Sewing Expo committee brought Shirley Adams to Kentucky to be the featured speaker on Clothing Construction using three basic garment patterns in 2010. As the inventor of the Pin Weaving concept, she taught the easy “Fiber Dance Pin Weaving” lesson to 25 Expo registrants and Extension Agents enrolled in the educational class. The Extension Agents took this skill back to their counties and taught it over 25 times in the years to come reaching over 200 clientele. A program that began 11 years ago has brought new skills and a high level of satisfaction.

In the early spring of 2021, Bullitt County Cooperative Extension Service was invited to collaborate in a project with Nichols Elementary to create a school garden and educational program for the garden. During the Garden Field Day 120 students from Nichols Elementary rotated through a series of booths focused on a variety of natural resources topics in the new garden area. Some of the stations included information about nutrition and health living, planting seeds, pollination and the anatomy of a flower, tree identification, the culture heritage of indigenous peoples and literacy (in the form of a story walk).

All program areas from the Bullitt County Extension Service participated in the field day, manning the booths, and providing educational activities for the students. The Extension Service, working with these organizations, hopes to expand the educational resources in this underserved area of western Bullitt County.



A “ribbon” pin weaving project being woven.

110

Number of individuals who participated in a sewing related program (not led by a Master Clothing Volunteer)

357

Number of individuals who reported increased levels of understanding in the areas of: clothing care, clothing repair (sewing on a button)

# NOTHING IS OUT OF REACH.



Healthy Families. Healthy Homes. Healthy Communities.



**Website:** [extension.ca.uky.edu](http://extension.ca.uky.edu)



**Facebook:** @UKCooperativeExtension



**Twitter:** @UKExtension



**YouTube:** @UKAgriculture

*... just a few ways Extension supports Kentucky*

- *23,971 Kentucky youth who participated in a project, activity or event in science, engineering and technology through 4-H programming.*
- *4,890 Kentucky producers adopting new technologies in agriculture production.*
- *3,399 Kentuckians who improved or maintained health from participating in gardening.*
- *3,898 Kentucky families who supplemented their diets with foods they grew or preserved.*
- *4,161 Kentuckians participating in community trail projects.*

## COOPERATIVE EXTENSION



## University of Kentucky Cooperative Extension

S-107 Ag Science Center North  
Lexington, Kentucky 40546-0091  
(859) 257-4302

Educational programs of Kentucky Cooperative Extension serve all people regardless of economic or social status and will not discriminate on the basis of race, color, ethnic origin, national origin, creed, religion, political belief, sex, sexual orientation, gender identity, gender expression, pregnancy, marital status, genetic information, age, veteran status, or physical or mental disability.