

Xerox Security Bulletin XRX12-007

Disable software upgrades by default

v1.1

10/01/12

Background

The Xerox products listed below were shipped with software upgrades enabled by default. The firmware released below changes the default state of software upgrade to disabled. After installing this firmware, software upgrade will be disabled. It can be re-enabled at the local UI when necessary.

Firmware solutions for the products listed below have been provided¹. These solutions are designed to be installed by the customer. The firmware solutions can be accessed via the links below or via the links following this bulletin announcement on www.xerox.com/security:

- Phaser 6010: <http://www.support.xerox.com/support/phaser-6010/file-download/enus.html?operatingSystem=win7&fileLanguage=en&contentId=121824>
- Phaser 6125: <http://www.support.xerox.com/go/getfile.asp?objid=121384&EULA=28&Xtype=download&uType=>
- Phaser 6128MFP: <http://www.support.xerox.com/go/getfile.asp?objid=121383&EULA=28&Xtype=download&uType=>
- Phaser 6130: <http://www.support.xerox.com/go/getfile.asp?objid=121385&EULA=28&Xtype=download&uType=>
- Phaser 6140: <http://www.support.xerox.com/go/getfile.asp?objid=121386&EULA=28&Xtype=download&uType=>
- Phaser 6180: <http://www.support.xerox.com/go/getfile.asp?objid=121387&EULA=28&Xtype=download&uType=>
- Phaser 6180MFP: <http://www.support.xerox.com/go/getfile.asp?objid=121388&EULA=28&Xtype=download&uType=>
- Phaser 6280: <http://www.support.xerox.com/go/getfile.asp?objid=120726&EULA=1&Xtype=download&uType=>
- Phaser 6500: <http://www.support.xerox.com/support/all-products/file-download/enus.html?contentId=121587>
- WorkCentre 3045NI: <http://www.support.xerox.com/support/phaser-6010/file-download/enus.html?operatingSystem=win7&fileLanguage=en&contentId=121825>
- WorkCentre 6015NI: <http://www.support.xerox.com/support/all-products/file-download/enus.html?contentId=121955>
- WorkCentre 6505: <http://www.support.xerox.com/support/all-products/file-download/enus.html?contentId=121588>

NOTE: If software upgrade had previously been disabled, software upgrade must be ENABLED on the device at the Local User Interface before this firmware version can be loaded.

These firmware solutions are classified as **Moderate** updates.

Please follow the instructions starting on page 2 for each affected product to install these firmware solutions.

Applicability

This bulletin applies to network-connected versions² only of the following products:

Phaser [®]	WorkCentre [®]
6010	3045NI
6125	6015NI
6128MFP	6505
6130	
6140	
6180	
6180MFP	
6280	
6500	

¹ NOTE: For best security leave this control set to disabled after upgrading your software. The control must be set to enabled prior to doing a software upgrade.

² If the product is not connected to the network, it is not vulnerable and therefore no action is required.

Instructions (What must to be done If I have one of the affected products?)

Determine what actions, if any, need to be performed to prep the device for installation of the firmware solution:

1. Determine the current Controller Firmware version on your device by printing a Configuration Page. To print a Configuration Page follow the instructions on Page 13 of this bulletin.
2. Determine if any action needs to be taken based on the Controller Firmware version listed on the Configuration Page for each device. This is done by following steps 3 through 6.
3. Determine the appropriate Installation Action Table to follow starting on page 3 by looking for your product number at the top of each chart, and matching it to your specific product.
4. Locate the Controller Firmware version in the chart that matches or falls within the listed Controller Firmware versions.
5. From the directions in the Installation Action Table for the affected product and Controller Firmware version determine what action, if any, has to be taken before the Controller Firmware version linked on page 1 can be installed.
6. Perform the indicated action to get your device ready to install the Controller Firmware.
7. Once your device is ready to install the Controller Firmware, follow the Firmware Installation Instructions starting on page 5 to install the Controller Firmware on the device.

Installation Action Tables

The following tables indicate what actions, if necessary, are the affected device:

For Phaser 6010

	If Your Controller Firmware Version Is	Ready for Upgrade?	Next step:	Controller Firmware Version Will Now Show:
1	Less than 201202081342	Yes	Upgrade to 201202081342	201202081342
2	201202081342 or Greater	N/A	None	201202081342 or Greater

For Phaser 6125

	If Your Controller Firmware Version Is	Ready for Upgrade?	Next step:	Controller Firmware Version Will Now Show:
1	Less than 201204271134	Yes	Upgrade to 201204271134	201204271134
2	201204271134 or Greater	N/A	None	201204271134 or Greater

For Phaser 6128MFP

	If Your Controller Firmware Version Is	Ready for Upgrade?	Next step:	Controller Firmware Version Will Now Show:
1	Less than 201205231143	Yes	Upgrade to 201205231143	201205231143
2	201205231143 or Greater	N/A	None	201205231143 or Greater

For Phaser 6130

	If Your Controller Firmware Version Is	Ready for Upgrade?	Next step:	Controller Firmware Version Will Now Show:
1	Less than 201204261910	Yes	Upgrade to 201204261910	201204261910
2	201204261910 or Greater	N/A	None	201204261910 or Greater

For Phaser 6140

	If Your Controller Firmware Version Is	Ready for Upgrade?	Next step:	Controller Firmware Version Will Now Show:
1	Less than 201204201602	Yes	Upgrade to 201204201602	201204201602
2	201204201602 or Greater	N/A	None	201204201602 or Greater

For Phaser 6180

	If Your Controller Firmware Version Is	Ready for Upgrade?	Next step:	Controller Firmware Version Will Now Show:
1	Less than 201205171931	Yes	Upgrade to 201205171931	201205171931
2	201205171931 or Greater	N/A	None	201205171931 or Greater

For Phaser 6180MFP

	If Your Controller Firmware Version Is	Ready for Upgrade?	Next step:	Controller Firmware Version Will Now Show:
1	Less than 201205251425	Yes	Upgrade to 201205251425	201205251425
2	201205251425 or Greater	N/A	None	201205251425 or Greater

For Phaser 6280

	If Your Controller Firmware Version Is	Ready for Upgrade?	Next step:	Controller Firmware Version Will Now Show:
1	Less than 201204051017	Yes	Upgrade to 201204051017	201204051017
2	201204051017 or Greater	N/A	None	201204051017 or Greater

For Phaser 6500

	If Your Controller Firmware Version Is	Ready for Upgrade?	Next step:	Controller Firmware Version Will Now Show:
1	Less than 201203141133	Yes	Upgrade to 201203141133 (See Note 1)	201203141133
2	201203141133 or Greater	N/A	None	201203141133 or Greater

Note 1: Contact the Xerox Support Center to obtain the special installation instructions for upgrading the device to Firmware Version 201203141133

For WorkCentre 3045NI

	If Your Controller Firmware Version Is	Ready for Upgrade?	Next step:	Controller Firmware Version Will Now Show:
1	Less than SG4_XC_1.16c	Yes	Upgrade to SG4_XC_1.16c	SG4_XC_1.16c
2	SG4_XC_1.16c or Greater	N/A	None	SG4_XC_1.16c or Greater

For WorkCentre 6015N/I

	If Your Controller Firmware Version Is	Ready for Upgrade?	Next step:	Controller Firmware Version Will Now Show:
1	Less than 01.00.23	Yes	Upgrade to 01.00.23	01.00.23
2	01.00.23 or Greater	N/A	None	01.00.23 or Greater

For WorkCentre 6505

	If Your Controller Firmware Version Is	Ready for Upgrade?	Next step:	Controller Firmware Version Will Now Show:
1	Less than 201203141124	Yes	Upgrade to 201203141124 (See Note 1)	201203141124
2	201203141124 or Greater	N/A	None	201203141124 or Greater

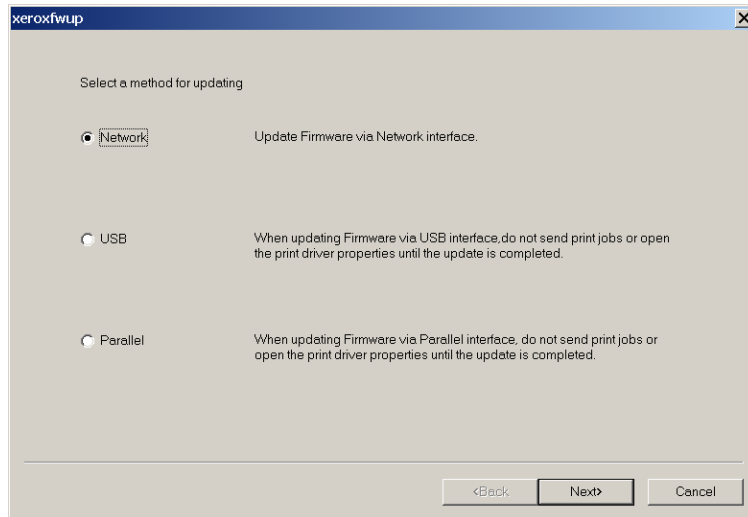
Note 1: Contact the Xerox Support Center to obtain the special installation instructions for upgrading the device to Firmware Version 201203141124

Firmware Installation Instructions

(for all products except the Phaser 6500, WorkCentre6015N/I and WorkCentre 6505)

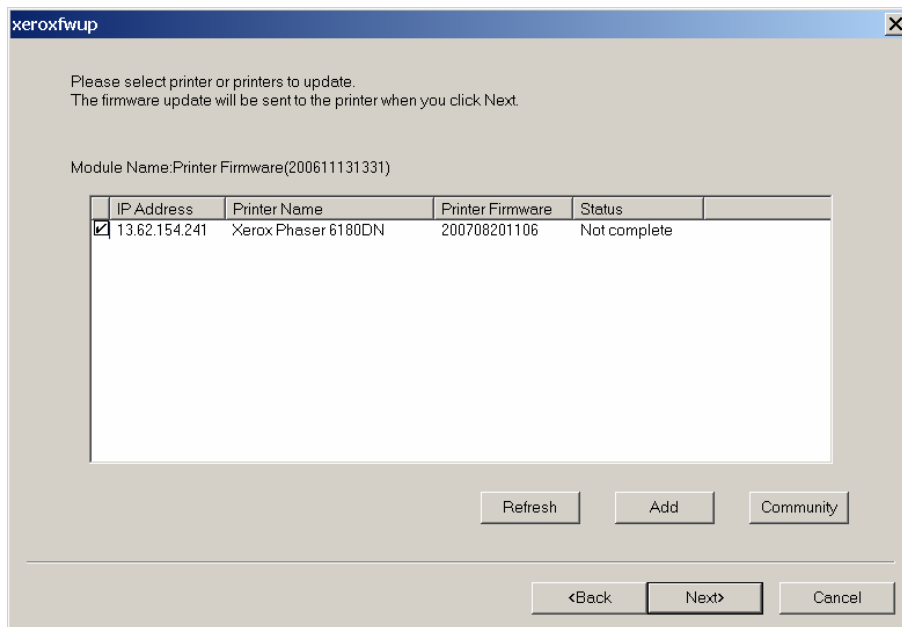
Caution: Do Not Reboot or Turn Off the printer during the firmware update process. The printer will automatically reboot when finished downloading the firmware.

1. Ensure your appropriate downloading option (Network, USB, or Parallel) is available and connected.
2. Double-click on the **xerofwup.exe** icon located in your printer directory.
3. The **xerofwup** window with the connection options is displayed. Three connections are available for updating the firmware (some products will not have a Parallel interface).



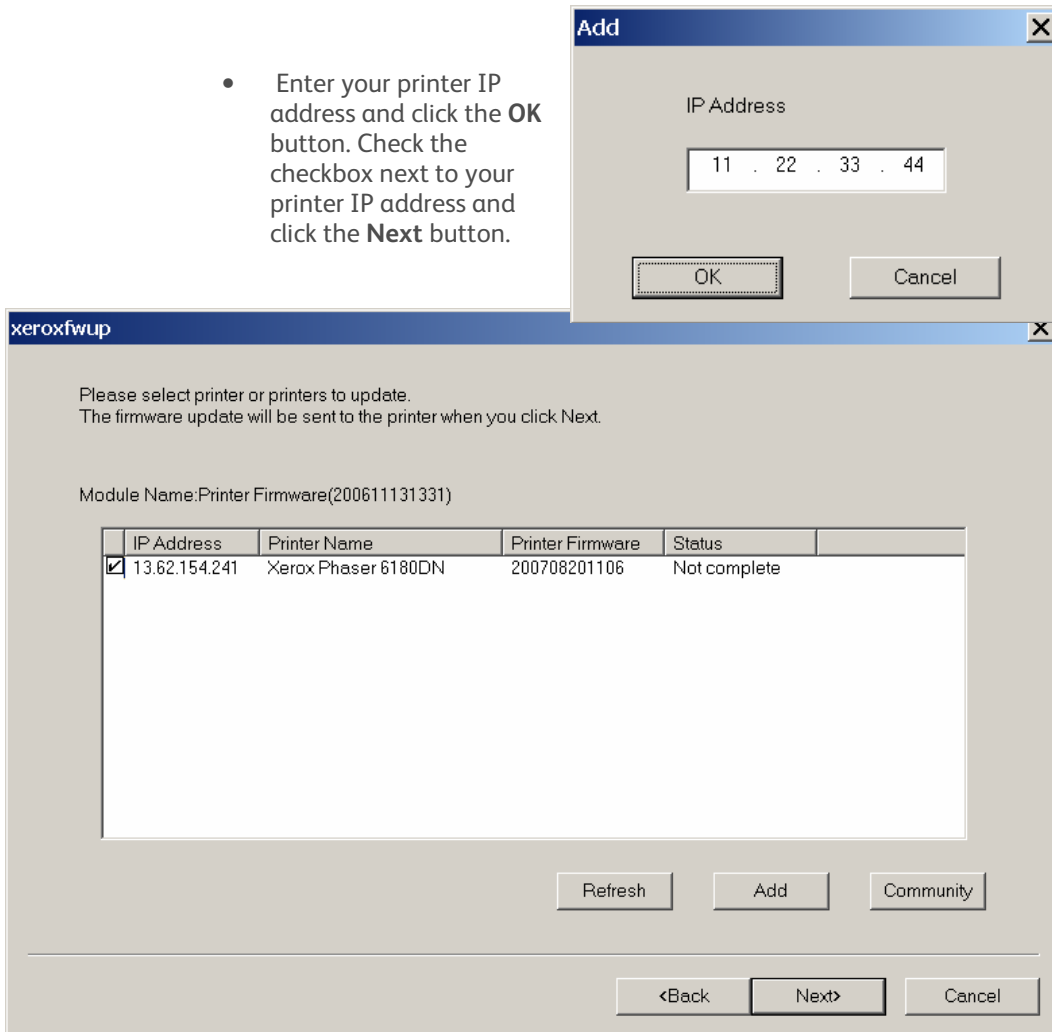
- **For Network connection:**

- Select **Network** and click the **Next** button.
- If your printer IP address is listed, check the checkbox next to your printer. Click the **Next** button.

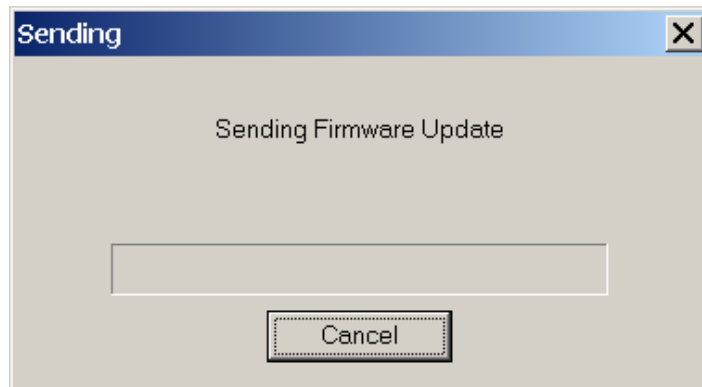


- If your printer IP address is not listed, click the **Add** button.

- Enter your printer IP address and click the **OK** button. Check the checkbox next to your printer IP address and click the **Next** button.

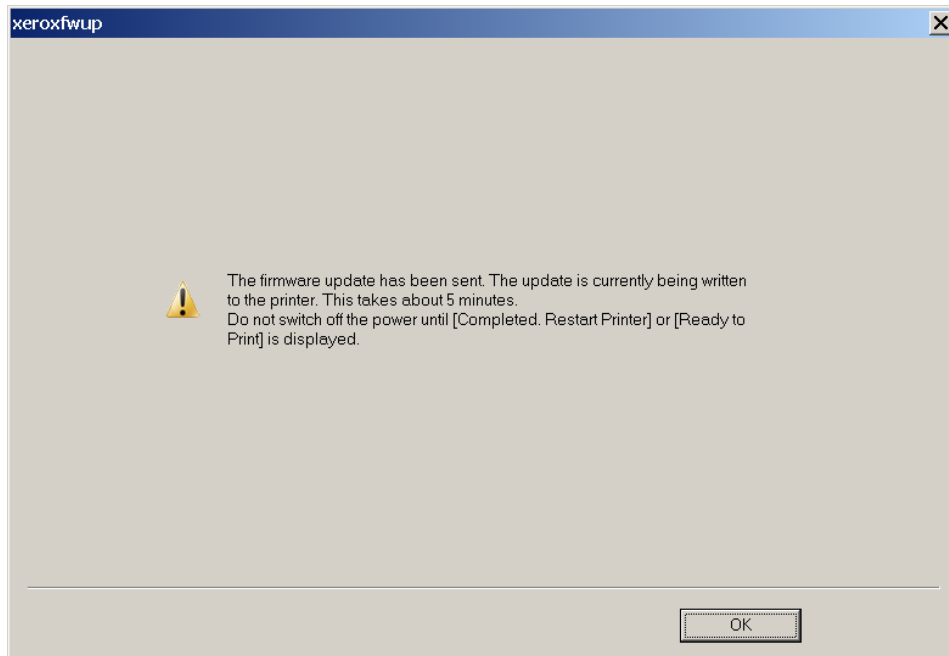


- The Firmware will start downloading to your printer.

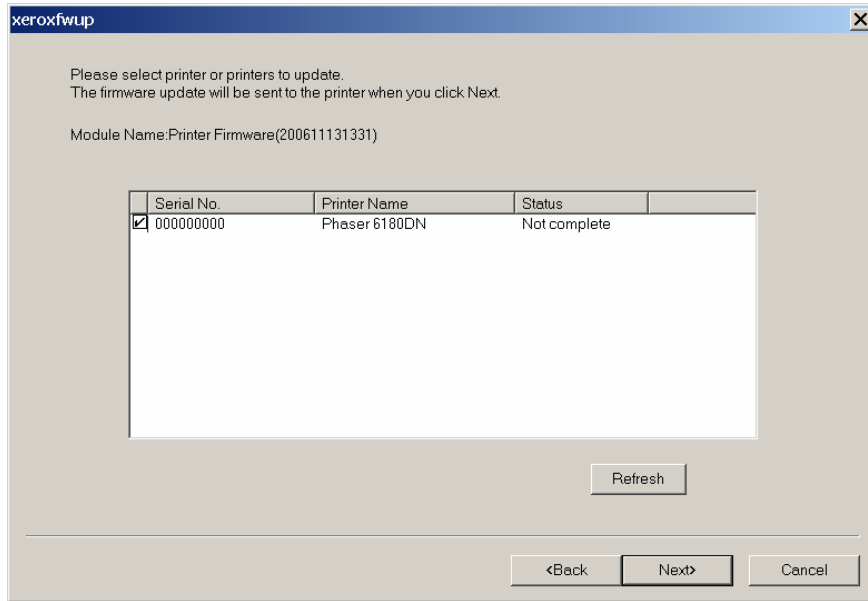


- On the printer Control Panel, the following messages are displayed:
Receiving data Port 9100 AIOC --> Receiving data Port 9100 F/W --> Please wait Port 9100 F/W --> Writing... Port 9100 AIOC --> Writing... Port 9100 F/W as the printer starts updating the firmware.

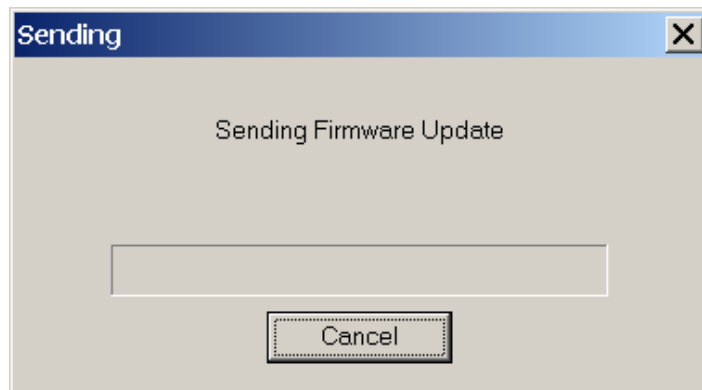
- When the process is completed, the **Please wait...** --> **Ready** messages are displayed on the printer Control Panel.



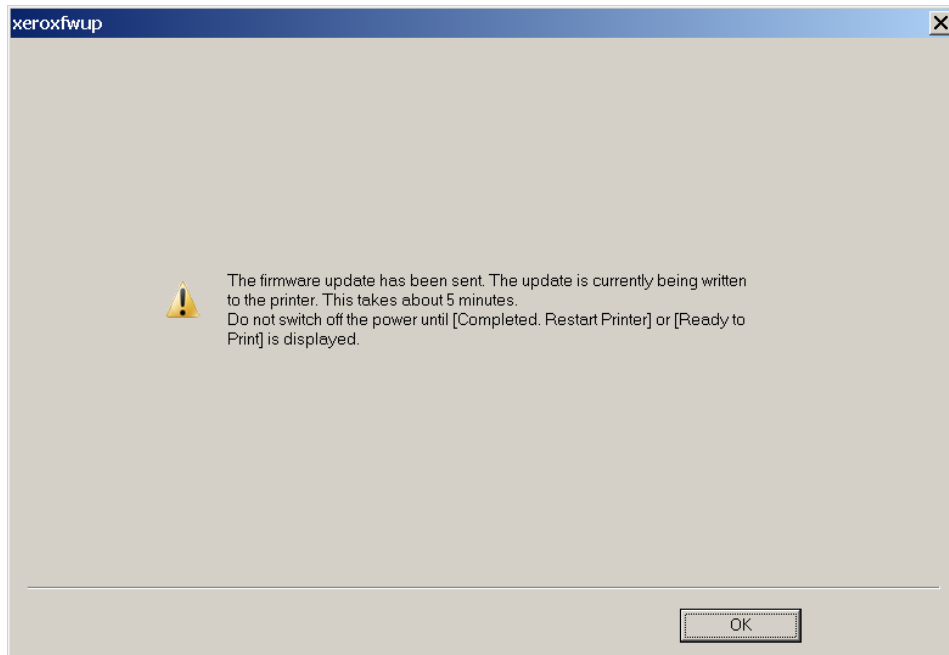
- On your computer, verify that the firmware update has been completed - a "**The firmware update has been sent**" message is displayed and **Completed** is displayed under the **Status** column. Click the **Next** button. Click the **OK** button.
- Print the printer Configuration page from your printer's front panel and verify the Firmware Version information.
- **For USB connection:**
 - Select **USB** and click the **Next** button.
 - The **xeroxfwup** window with the printer serial number is displayed. Check the checkbox next to your listed printer. Click the **Next** button.



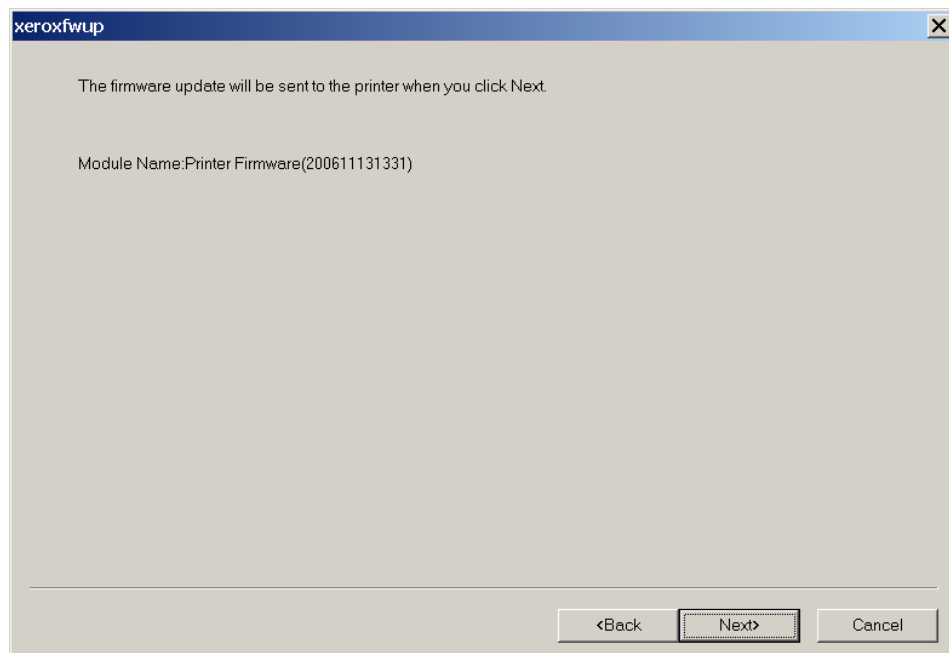
- The Firmware will start downloading to your printer.



- On the printer Control Panel, the following messages are displayed:
Receiving data USB AIOC --> Receiving data USB F/W --> Please wait... USB F/W --> Writing... USB AIOC --> Writing... USB F/W as the printer starts updating the firmware.
- When the process is completed, the **Please wait... --> Ready** messages are displayed on the printer Control Panel.



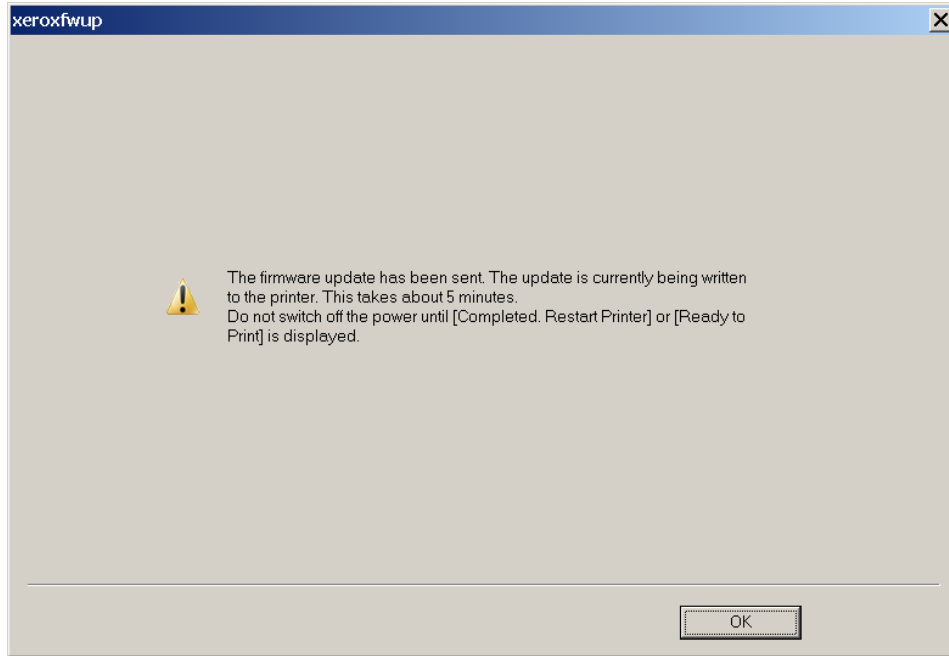
- On your computer, verify that the firmware update has been completed - a “**The firmware update has been sent**” message is displayed and **Completed** is displayed under the **Status** column. Click the **Next** button. Click the **OK** button.
- Print the printer Configuration page from your printer’s front panel and verify the Firmware Version information.
- **For Parallel connection (for those products with a Parallel connection):**
 - Select **Parallel** and click the **Next** button.
 - The **xeroxfwup** window is displayed. Click the **Next** button.



- On the printer Control Panel, the following messages are displayed

Receiving data Parallel AIOC --> Receiving data Parallel F/W --> Please wait Parallel F/W --> Writing... Parallel AIOC --> Writing... Parallel F/W --> Completed... as the printer starts updating the firmware.

- When the process is completed, the **Please wait...** --> **Ready** messages are displayed on the printer Control Panel.



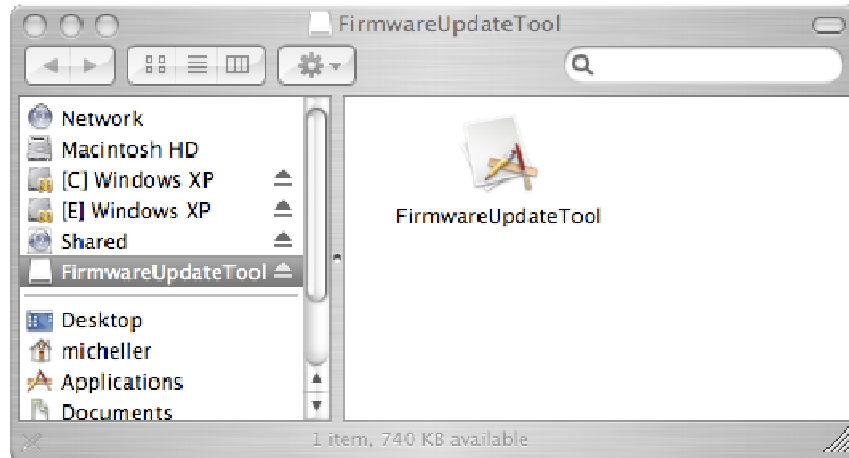
- On your computer, verify that the firmware update has been completed - a **"The firmware update has been sent"** message is displayed and **Completed** is displayed under the **Status** column. Click the **Next** button. Click the **OK** button.
- Print the printer Configuration page from your printer's front panel and verify the Firmware Version information.

Macintosh OSX Firmware Update Process

Caution: Do Not Reboot or Turn Off the printer during the firmware update process. The printer will automatically reboot when finished downloading the firmware.

NOTE: FTP is the download mechanism for the Macintosh; in the Mac's Network settings, check "Use Passive FTP Mode (PASV)".

- Select the directory where you have saved the file you downloaded.
- Double-click on the FirmwareUpdateTool.dmg file to un-compress the firmware tool.
- Double-click on the FirmwareUpdateTool package, and then double-click on the FirmwareUpdateTool utility in the window that opens.



- This brings up the Firmware Update Tool window:



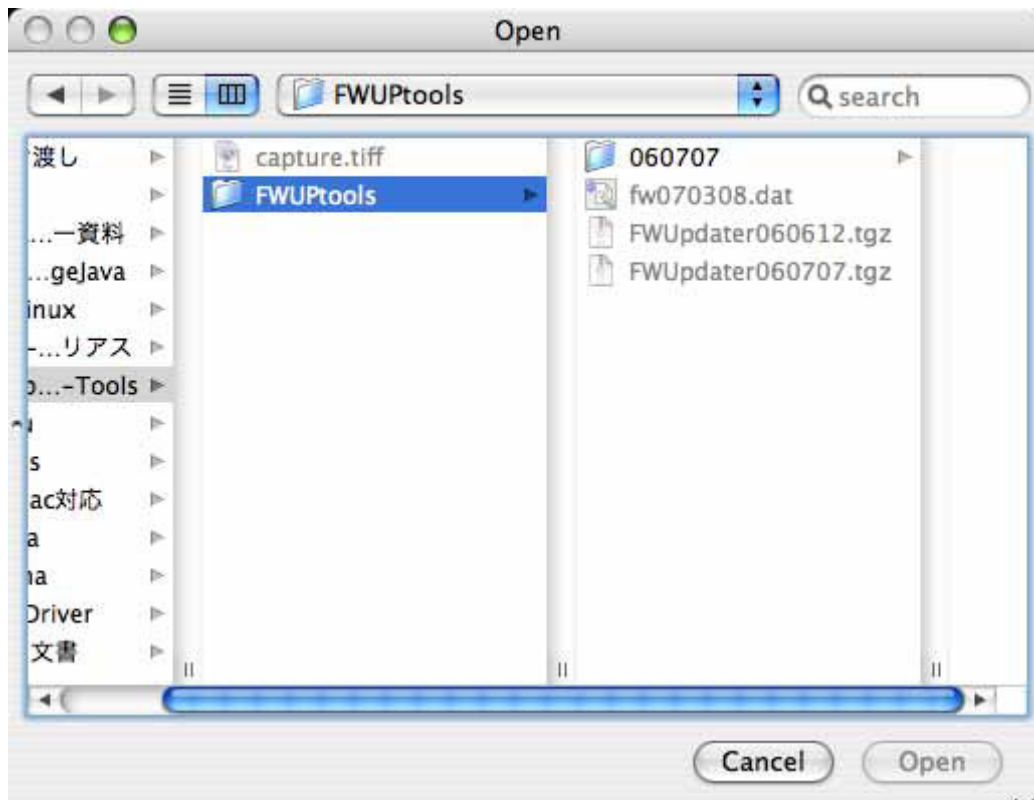
- To set the IP address of your printer, double-click on the "Set IP Address" button.
- Enter the IP address of your printer and click "OK".
 - To find the IP address of your printer, print a configuration page from the front panel of your printer.



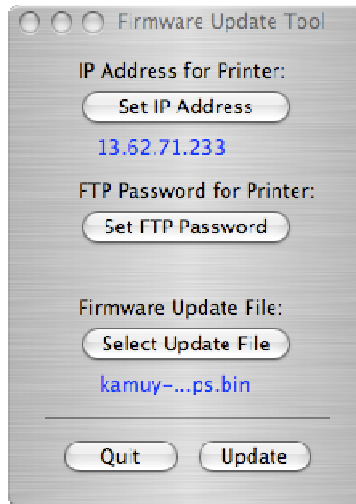
- Setup the FTP password for the printer by double-clicking on the “Set FTP Password” button. Enter your FTP password and click “OK”.
 - If you have not setup a password on your printer via CWIS, then no password needs to be entered here.
 - Make sure FTP is enabled on your printer. You can enable FTP on your printer through CWIS. CWIS is also where you would set your FTP password for your printer, which should match the FTP password entered here.



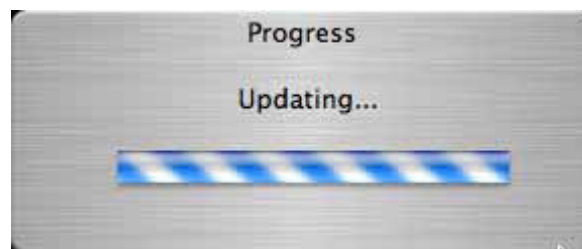
- Select the firmware file by clicking on the “Select Update File” button. Search for your firmware file (*.prn) and press Open.



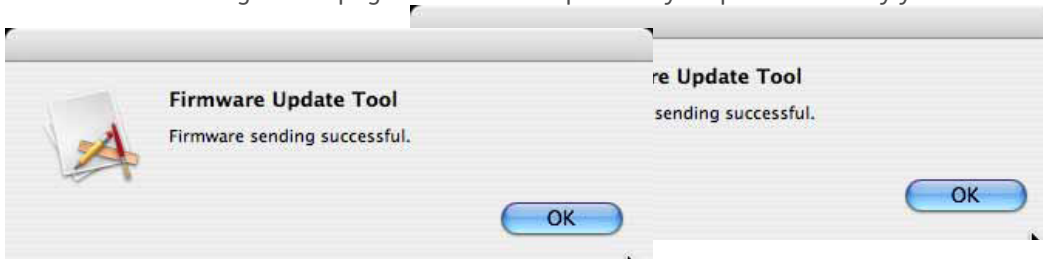
- Once all your settings are complete, select the “Update” button.



- The Progress bar will identify the progress of the download.



- Once the file download is complete, the Success Dialog will display.
- Print a configuration page from the front panel of your printer to verify your firmware settings.

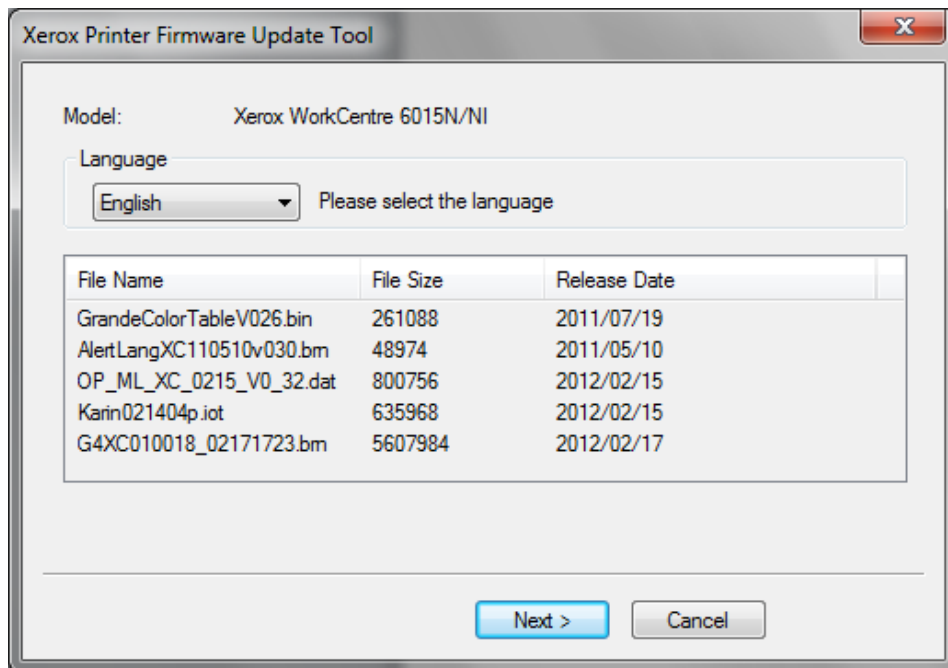


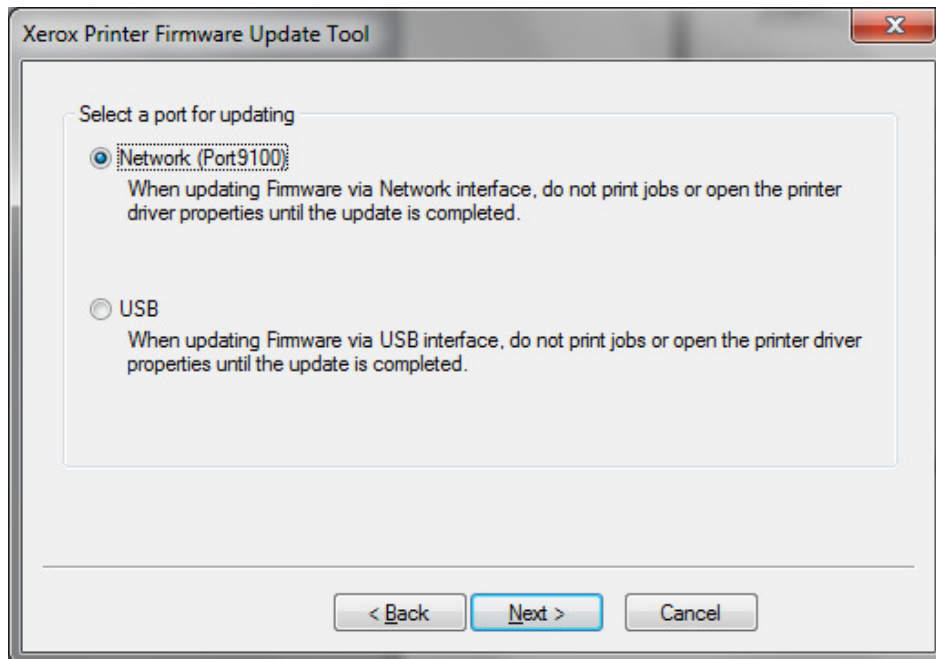
Firmware Installation Instructions WorkCentre 6015N/I

Windows Operating Systems

Caution: Do Not Reboot or Turn Off the printer during the firmware update process. The printer will automatically reboot when finished downloading the firmware.

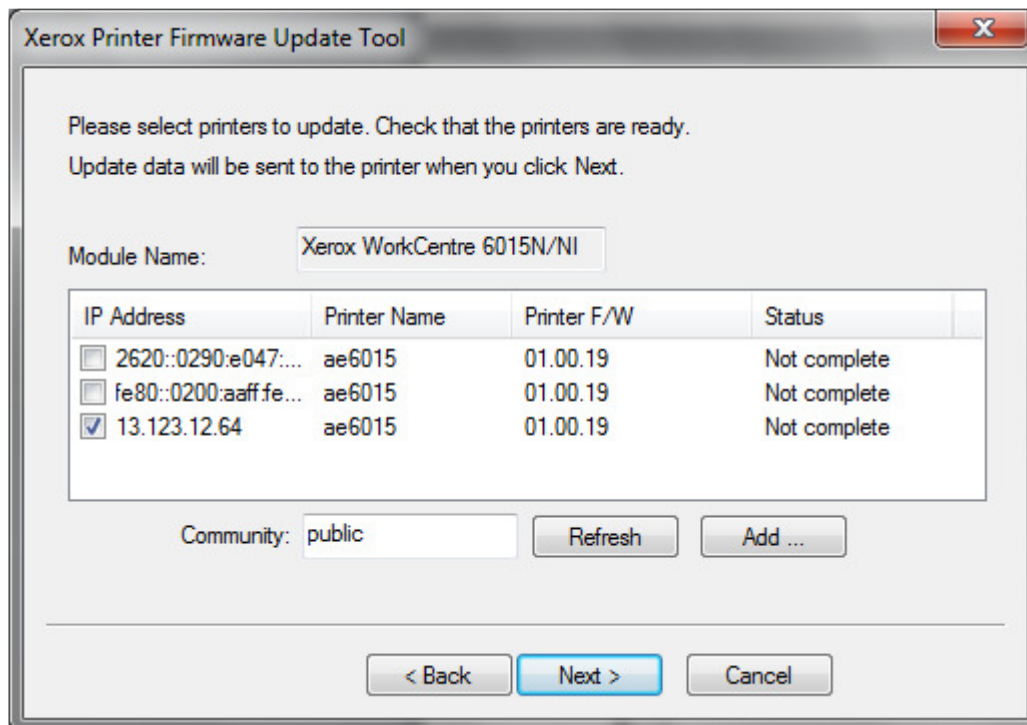
1. Make sure the printer is powered on and connected over network or USB.
2. On the printer, print a System Settings Report to document the current printer settings.
3. On the computer, double-click on the **xrfwdl_6015N.exe** icon located in the firmware folder.
4. The **Xerox Printer Firmware Update Tool** window with the firmware files is displayed. Press **Next**
5. Two connections are available for updating the firmware, Network and USB. When updating devices that only have USB connections, only the USB connection option will be displayed. Select your connection and press **Next**



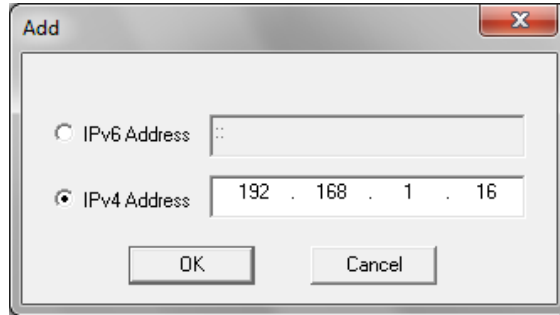


• **For Network connection:**

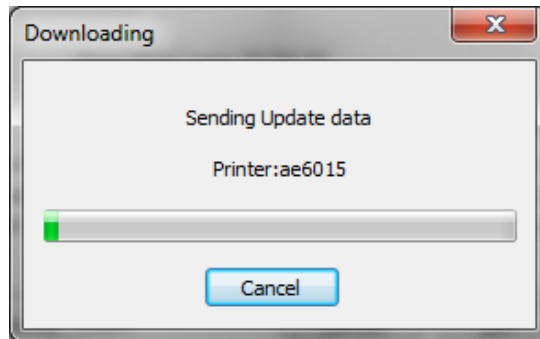
- If your printer IP address is listed, check the checkbox next to your printer. Click the **Next** button.



- If your printer IP address is not listed, click the **Add** button.
- Enter your printer IP address and click the **OK** button.



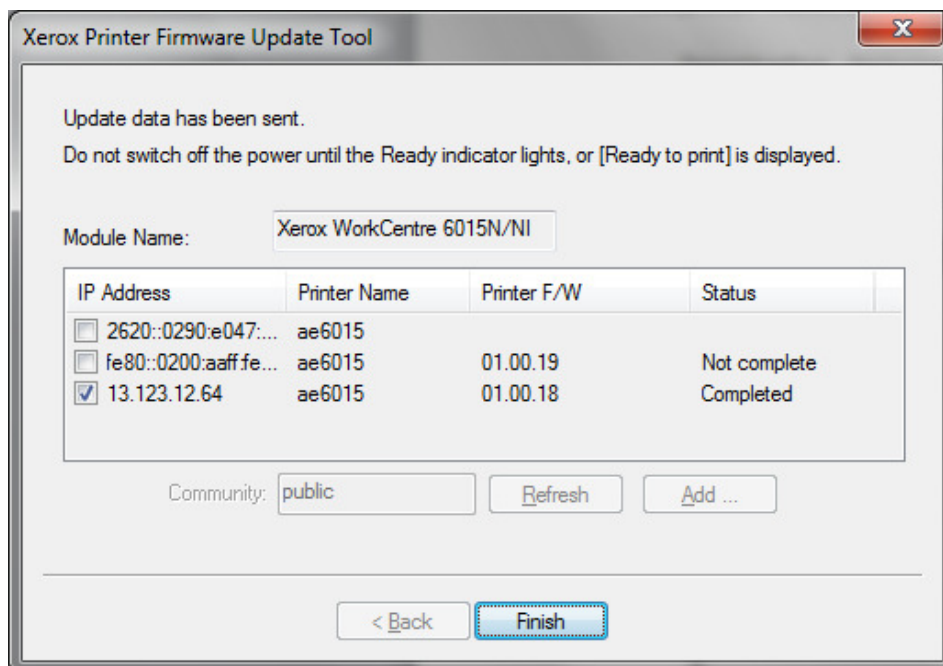
- Check the checkbox next to your printer IP address and click the **Next** button to send the firmware to your printer.



- The following messages will be displayed on your printer. These messages may vary slightly depending on the printer model, and whether you are upgrading the controller or engine firmware.

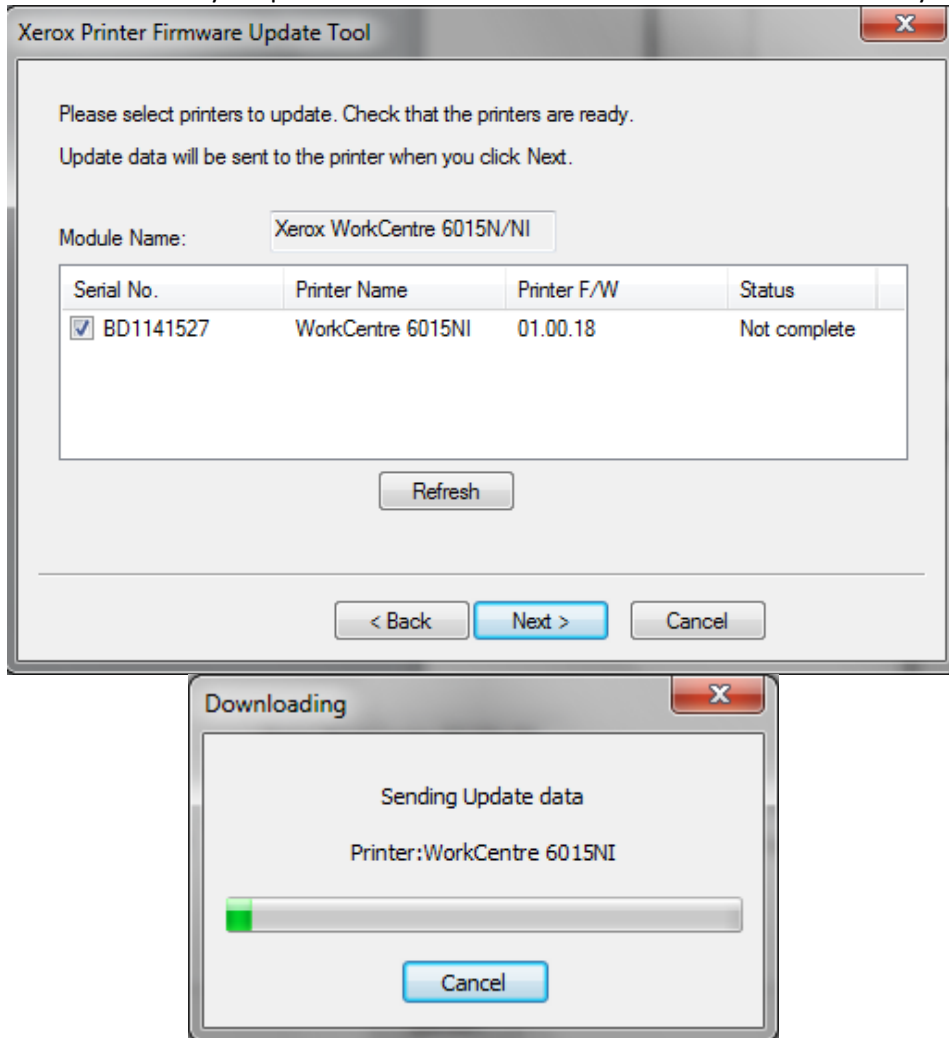
Downloading...
Network F/W

- The printer will reboot after the firmware is updated. Print a System Setting Report to verify the updated firmware version.
- After the firmware upgrade is complete, click the **Finish** button to exit the firmware upgrade tool.



• **For USB connection:**

- Check the checkbox next to your printer. Click the **Next** button to send the firmware to your printer.

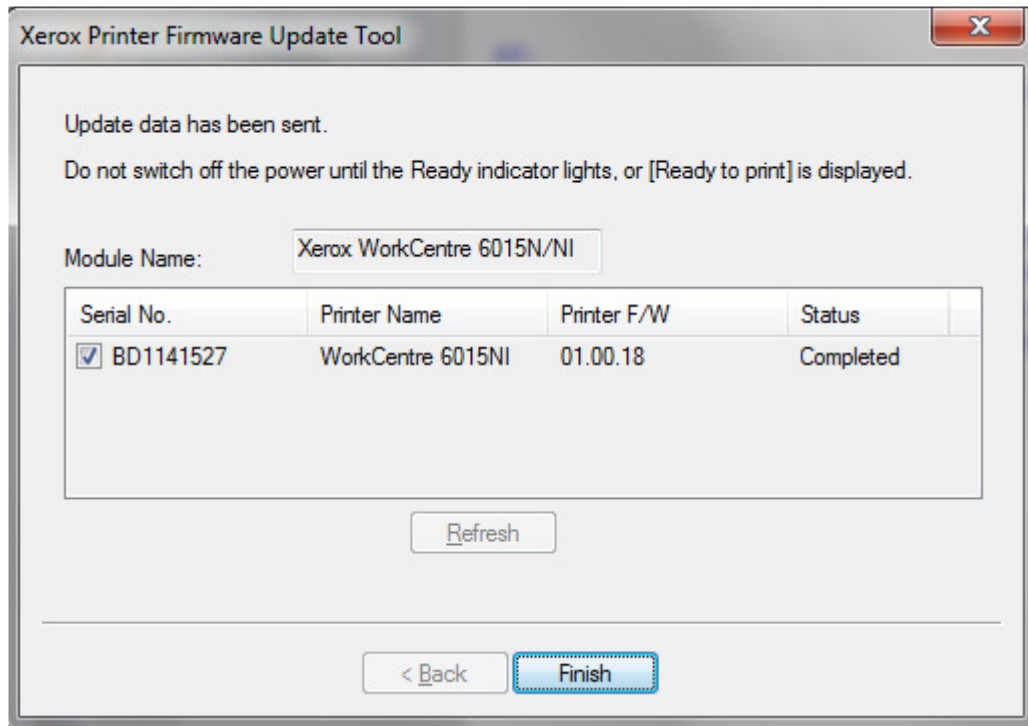


- The following messages will be displayed on your printer. These messages may vary slightly depending on the printer model, and whether you are upgrading the controller or engine firmware.

Downloading...

USB F/W

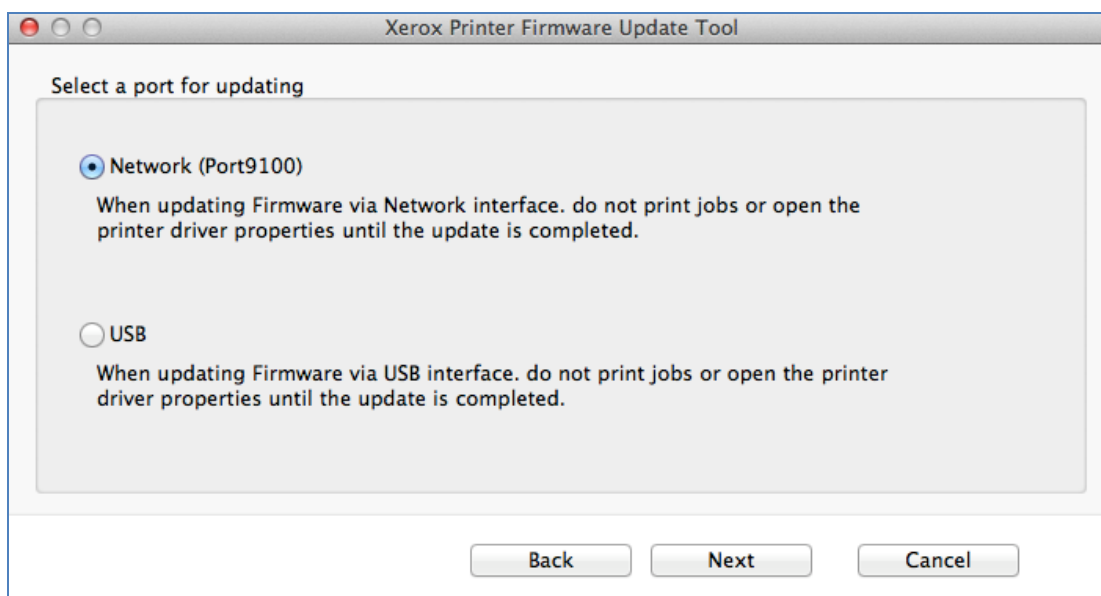
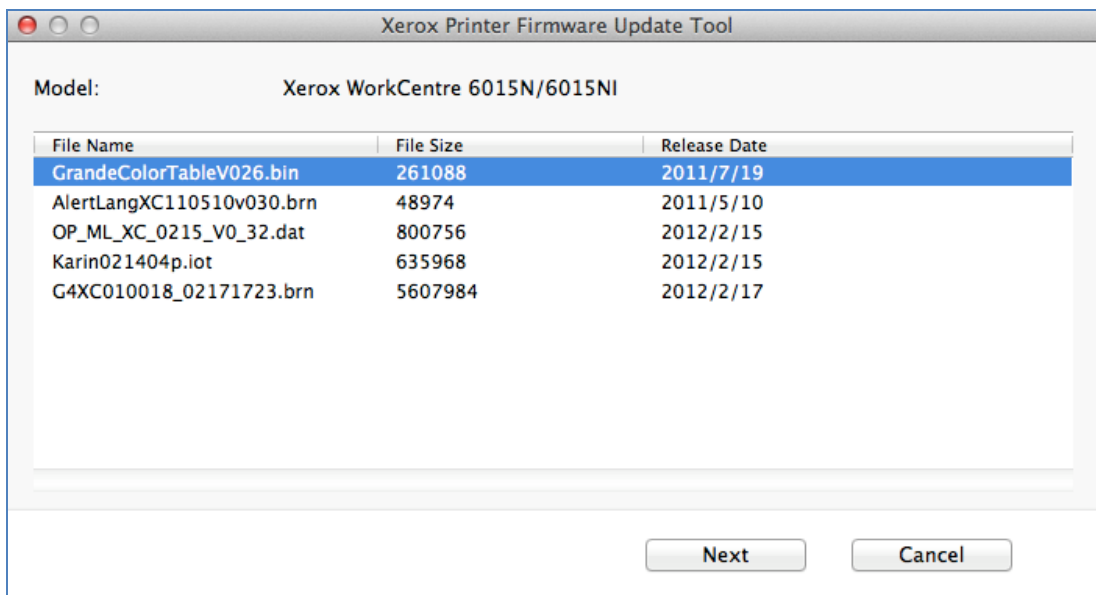
- The printer will reboot after the firmware is updated. Print a System Settings Report to verify the updated firmware version.
- After the firmware upgrade is complete, click the **Finish** button to exit the firmware upgrade tool.



Mac Operating Systems

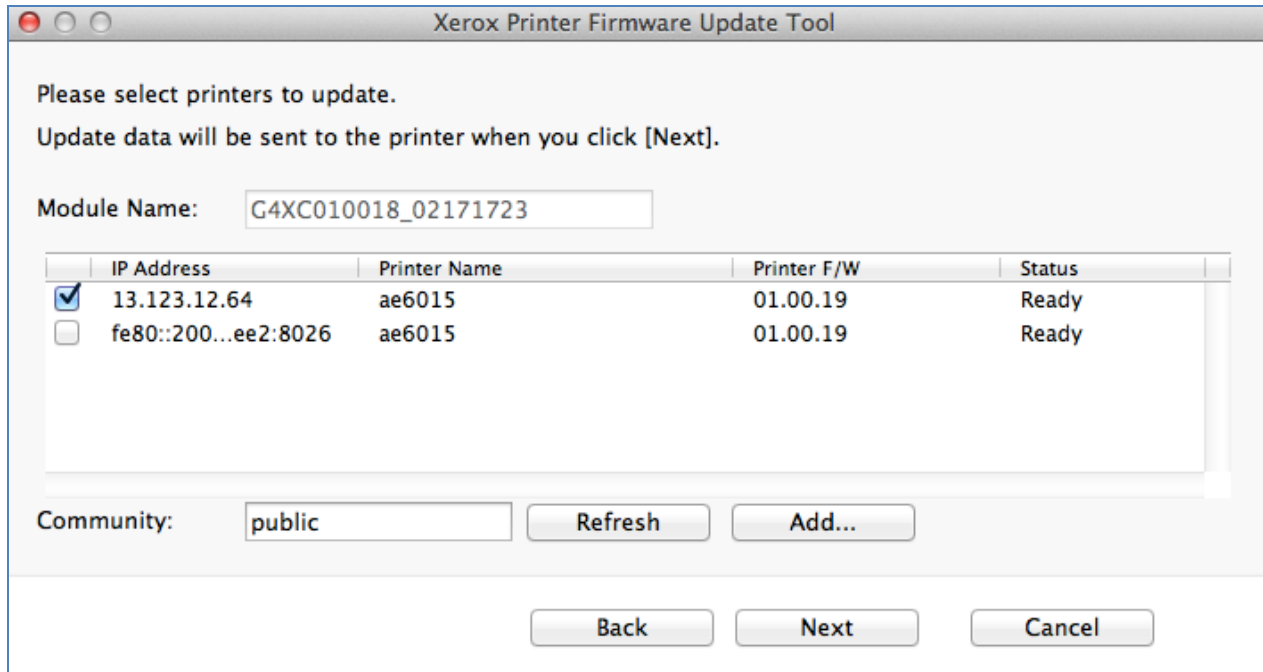
Caution: Do Not Reboot or Turn Off the printer during the firmware update process. The printer will automatically reboot when finished downloading the firmware.

1. Make sure the printer is powered on and connected over network or USB.
2. On the printer, print a System Settings Report to document the current printer settings.
3. On the computer, double-click on the **xrfwdl_6015N.app** icon located in the firmware folder.
4. The **Xerox Printer Firmware Update Tool** window with the firmware files is displayed. Press **Next**
5. Two connections are available for updating the firmware, Network and USB. When updating devices that only have USB connections, only the USB connection option will be displayed. Select your connection and press **Next**

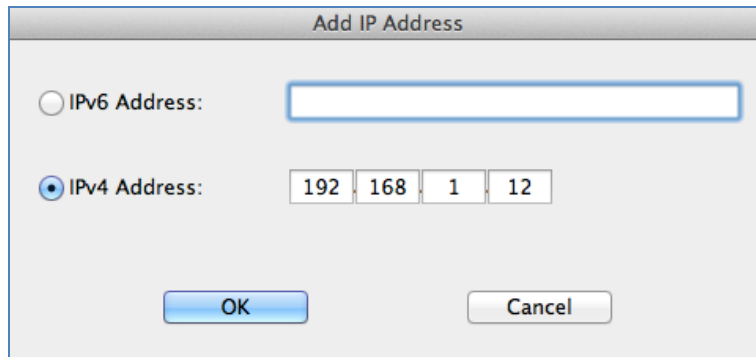


• For Network connection:

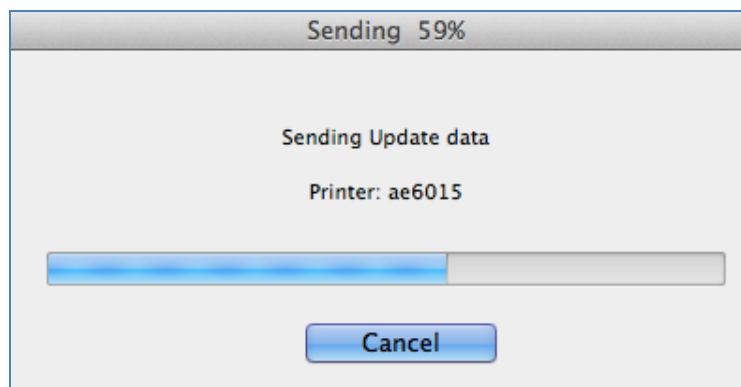
- If your printer IP address is listed, check the checkbox next to your printer. Click the **Next** button.



- If your printer IP address is not listed, click the **Add** button.
- Enter your printer IP address and click the **OK** button.



- Check the checkbox next to your printer IP address and click the **Next** button to send the firmware to your printer.

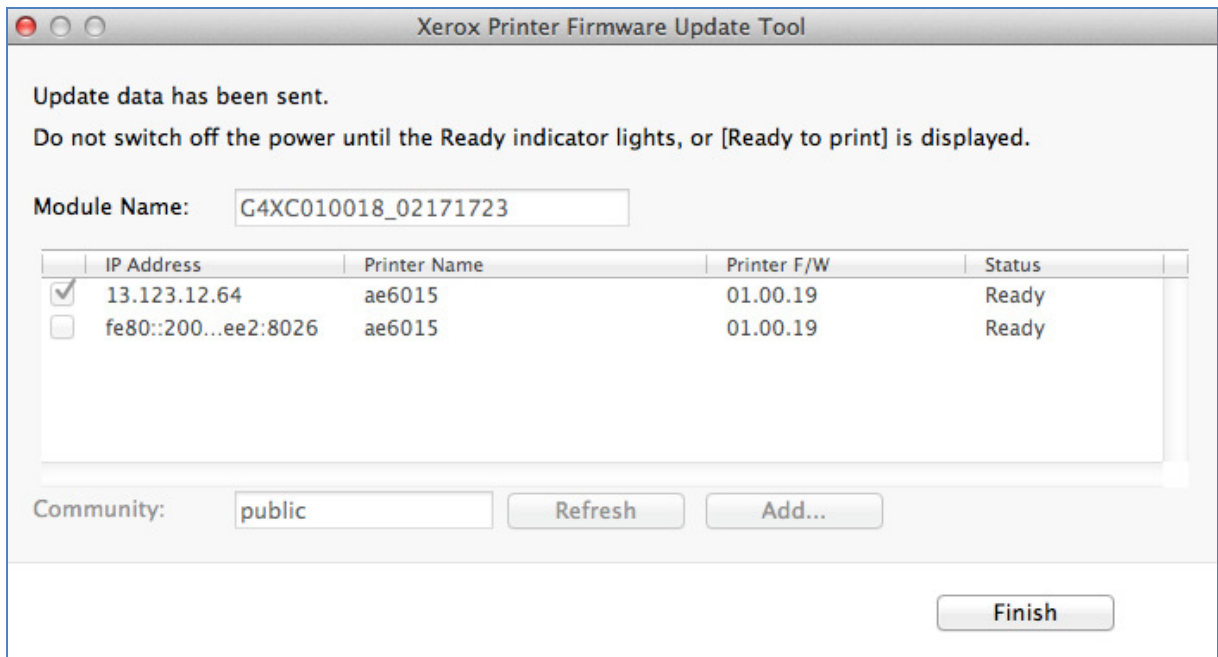


- The following messages will be displayed on your printer. These messages may vary slightly depending on the printer model, and whether you are upgrading the controller or engine firmware.

Downloading...

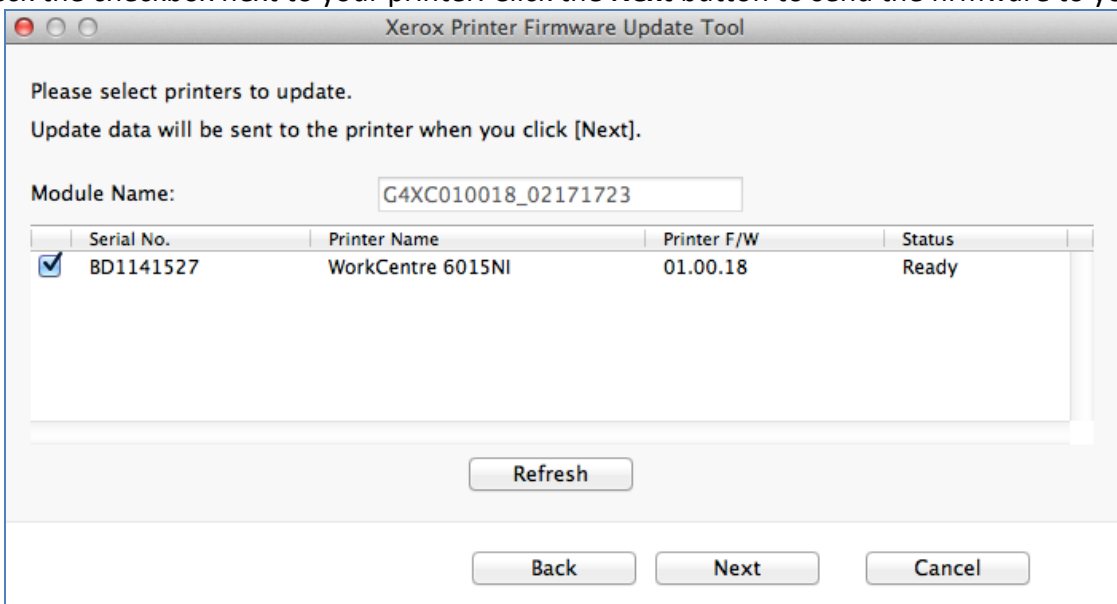
Network F/W

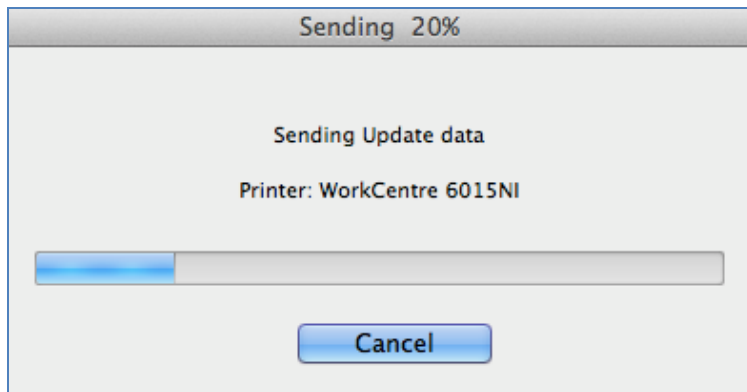
- The printer will reboot after the firmware is updated. Print a System Setting Report to verify the updated firmware version.
- After the firmware upgrade is complete, click the **Finish** button to exit the firmware upgrade tool.



• **For USB connection:**

- Check the checkbox next to your printer. Click the **Next** button to send the firmware to your printer.



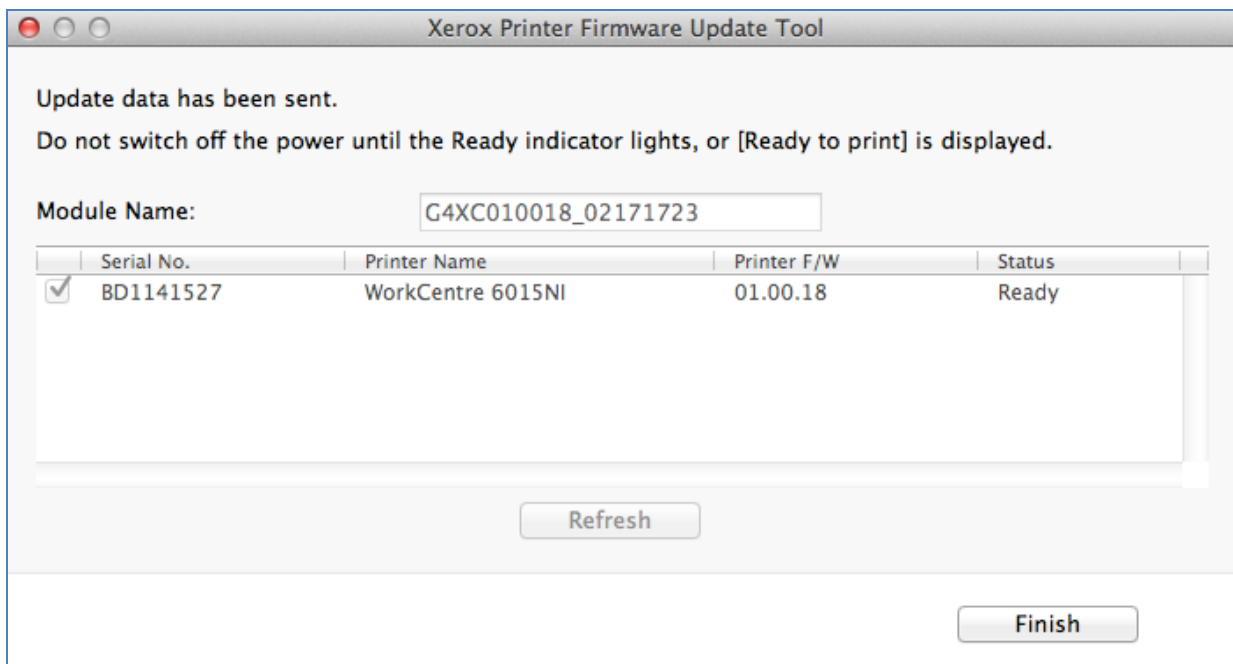


- The following messages will be displayed on your printer. These messages may vary slightly depending on the printer model, and whether you are upgrading the controller or engine firmware.

Downloading...

USB F/W

- The printer will reboot after the firmware is updated. Print a System Settings Report to verify the updated firmware version.
- After the firmware upgrade is complete, click the **Finish** button to exit the firmware upgrade tool.



Disclaimer

The information provided in this Xerox Product Response is provided "as is" without warranty of any kind. Xerox Corporation disclaims all warranties, either express or implied, including the warranties of merchantability and fitness for a particular purpose. In no event shall Xerox Corporation be liable for any damages whatsoever resulting from user's use or disregard of the information provided in this Xerox Product Response including direct, indirect, incidental, consequential, loss of business profits or special damages, even if Xerox Corporation has been advised of the possibility of such damages. Some states do not allow the exclusion or limitation of liability for consequential damages so the foregoing limitation may not apply.

©2012 Xerox Corporation. All rights reserved. Contents of this publication may not be reproduced in any form without permission of Xerox Corporation. XEROX®, XEROX and Design®, CentreWare®, Phaser®, ColorQube®, Document Centre®, WorkCentre®, and WorkCentre Pro® are trademarks of Xerox Corporation in the United States and/or other countries. Adobe® and PostScript® are registered trademarks or trademarks of Adobe Systems, Incorporated. All other trademarks are the property of their respective manufacturers.

The information in this bulletin is subject to change without notice.