

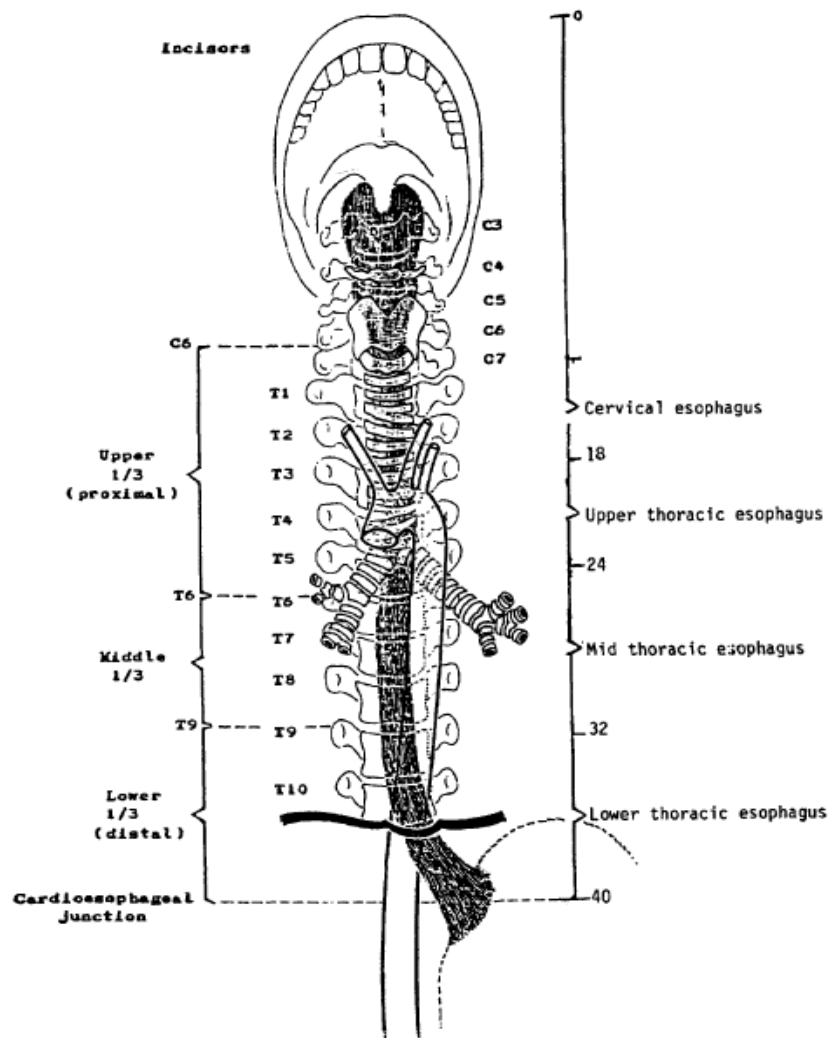
## Coding Guidelines

### Esophagus C150-C155, C158-C159

#### Primary Site

There are two systems that divide the esophagus into three subsites. The first system divides the esophagus into the upper third, middle third, and lower third. The second system describes the subsites as the cervical esophagus, upper thoracic esophagus, mid thoracic esophagus, and lower thoracic (abdominal) esophagus. The subsites for these two different systems are not identical. Assign the ICD-O-3 topography code that describes the primary site documented in the medical record. See the following image for an illustration of both systems.

#### Measurements of the Esophagus (From the Incisors to the Stomach)



### **First Course Treatment**

Do **not** code proton pump inhibitors (PPI) as treatment

Do **not** code RFA for Barrett's esophagus as treatment

HALO 90 ultra radiofrequency ablation (RFA) of Barrett's esophagus is used to reduce progression of high-grade dysplasia to esophageal cancer. It is not used to treat esophageal cancer.