



DECEMBER 2024

IT'S A GIRL



Congratulations

Anne (4-H Program Assistant) & Luke Wittman!

Sweet baby girl arrived!

Adelaide "Addie" Olivia Wittman

November 29th

Inside this Issue

Calendar	2
Celebration & Thanks	3
Club Information	4
Leader News	6
4-H Committees	8
Friends of the Fair	12
WI 4-H News	13

4-H Pledge

"I pledge my HEAD to clearer thinking,
my HEART to greater loyalty,
my HANDS to larger service,
and
my HEALTH to better living,
for my club, my community,
my country, and my world."

Office Hours:

Monday - Thursday
8:00 am - 4:30 pm

Due to community work, trainings and meetings please call ahead to our office to ensure that someone will be here to support your needs. We don't want you to make unwanted or unnecessary trips.

St. Croix County
Extension Website

Calendar

December

- 2 Thriving Survey Ends
- 7 Beef Initial Weigh-In
- 10 Livestock Rules Meeting
- 24-25 UWEX Office Closed - HOLIDAY
- 31 UWEX Office Closed - HOLIDAY



January

- 1 UWEX Office Closed - HOLIDAY
- 14 Livestock Rules Meeting
- 16 Dog Project Kick-off Meeting
- 18 Livestock Rules Meeting
- 20 UWEX Office Closed - HOLIDAY
- 21 Cloverbud @ Home
- 21 Leaders Association Meeting



February

- 3 Dairy Committee Meeting
- 18 Cloverbud @ Home
- 22 Clover College



UW– Madison, Division of Extension Non Discrimination Policy

Periodically, UW-Madison takes steps to ensure that our partners know and understand our policy of non-discrimination. This is to remind or notify you that the University of Wisconsin Madison, Division of Extension does not discriminate in the treatment of individuals in the admission or access to its programs and activities, in the provision of services, or in employments.

Further, UW-Madison will not participate with organizations or in activities, which discriminate on the basis of any of the prohibited categories of discrimination. Categories of prohibited discrimination include: race, color, gender/sex, creed, disability, religion, national origin, ancestry, age, sexual orientation, pregnancy, marital or parental status, arrest or conviction record, or membership in the National Guard, State Defense Force, or any other component of military services.

Consistent with the Americans With Disabilities Act, persons who need materials in alternative format or other accommodation must write or call the UW-Extension contact person for the specific program or call the main telephone number of St. Croix County UW-Extension (715) 531-1930, 1960 8th Ave., Suite 140, Baldwin, WI 54002 at least 10 working days prior to the event. Individuals who need TDD/TTY access, can call 711 for relay assistance.

The University of Wisconsin Madison, Division of Extension staff in St. Croix County thanks you for collaborating with our many educational endeavors. We appreciate your support and working relationship as we provide educational programs designed to empower the diverse citizens of St. Croix County.



Extension
UNIVERSITY OF WISCONSIN-MADISON
St. Croix County

1960 8th Ave. Suite 140
Baldwin, WI 54002
laura.hinz@wisc.edu
715-531-1930



<https://stcroix.extension.wisc.edu>

 [facebook](#)

 [@instagram](#)

Celebration & Thanks



UW-MADISON EXTENSION



Congratulations to all the St. Croix County 2024 4-H Leader's Banquet Award Winners



Club Information



UW-MADISON EXTENSION

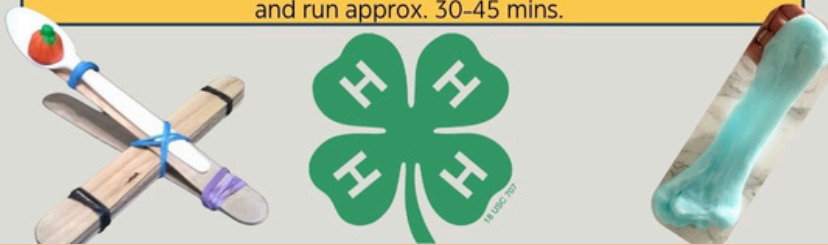
Cloverbud@Home

We are excited to offer the Cloverbud at Home program again this year!

This program is designed for ANY youth in grades K-2, not just registered Cloverbud members.

Each youth will receive a box with 4 months of hands-on learning activities, running January-April (boxes contain several supplies, but youth will be responsible for supplies not included – these are items you have around your house).

Each month offers TWO different educational opportunities! One staff lead Zoom opportunity, and one on your own opportunity. Each Zoom meeting is on the third Tuesday of the month and will start at 6:00 pm and run approx. 30-45 mins.



2025 Cloverbud at Home

Dates: Tuesdays: January 21, February 18, March 18, April 15

Time: 6:00 pm

Grades: K - 2nd

Location: On Zoom

Cost: \$25 for 4 At Home Activities and 4 Virtual Activities (Payment Due at Supply Pick Up Day)

Registration closes on Friday, December 20 so don't delay, register today!

REGISTER HERE

PREMIUM CHECKS

The checks will be given to you by your leader. Please cash ASAP as the check will be void after December 23, 2024. If you misplace the check or forget and do not get it cashed by then, you will have to come to the Fairboard meeting in February and explain to the Fairboard why you failed to cash the check in a timely manner. It will then be up to the board if they will issue you a new check or if you will forfeit your premium.

If you have a dispute with the amount of the check, please contact Cindy Van Dyk at 715.246.5486 or cindyvandyk1976@gmail.com to resolve the issue. You will need to provide proof why you believe it is incorrect.



AmeriCorps

AmeriCorps: Recruiting for 2025

Interested in serving with Wisconsin 4-H AmeriCorps?

The first step is to sign up. To learn more about how you can serve in your community, or another, submit this form to be sent more information about service opportunities, benefits of service, and the application process. Please fill out the attached link: <https://forms.gle/Bx386bWSQpjmXvVA9>

What's Up with Your Club?

Would you like your Club featured in the next St. Croix County 4-H Communicator? It's simple! Write up a short article telling us just how fun your club's event/meeting was and make sure to include a picture with the names of the members featured. Let us and other clubs know the good work you are doing in the community! Once you have completed your story send it to Laura at laura.hinz@wisc.edu





Clover College 2025

Saturday, February 22

Amery High School

Grades K - 5

FEELING creative?

VOLUNTEERS NEEDED!

We are seeking volunteers who would like to lead a workshop at the 2025 Clover College.

Workshops can center around a favorite hobby, project, or interest. Our aim is to offer youth a diverse range of project workshops, allowing them to leave with several completed fair exhibits.

Participants will be in grades K-5, and workshops can last either 55 minutes or 1 hour and 55 minutes.

Clover College will take place Saturday, February 22nd at the Amery High School

Register Now

<https://go.wisc.edu/95pmzu>



Rolling Hills 4-H Club Visits Phipps Center For the Arts

By James Kass, Rolling Hills 4-H Club Reporter

On Sunday, Oct 20, Rolling Hills 4-H Club watched a play in the Phipps Center for the Arts in Hudson before their annual awards banquet. The play, Transly-Mania, was put on by fellow youth. After the play, the club had a private backstage tour of the Phipps and learned about the set props and how much goes on offstage to make a performance. At the end of the tour, the club had its yearly awards banquet at the Phipps to celebrate the members' successes. An especial thank you to the Phipps and its staff for enabling the 4-H members to learn more about the performing arts via the tour and hosting the club banquet at the Phipps.



2024-2025 4-H TRIP PARTICIPANTS



Thinking about taking a trip in 2024-2025? Just a reminder to members attending 4-H trips - the Leaders Association offers trip scholarships for eligible applicants to help cover some of the cost of the trip.

Forms can be found HERE <https://stcroix.extension.wisc.edu/4-h-scholarships-awards/>

Deadlines -

- For trips scheduled in February 2025-June 30, 2025, application deadline is no later than Friday, April 7, 2025 at 5:00pm.

Find the 2024-25 Wisconsin 4-H Program Booklet HERE:

<https://4h.extension.wisc.edu/files/2024/10/2024-25-Program-Booklet-compressed.pdf>

St. Croix County 4-H Leaders Association Meeting

Tuesday, January 21 @ 6:30pm

UW-Extension Office

Agenda will be sent out prior to the meeting.



Reminder: 4-H Event Insurance

As you plan out your club calendar take note of those activities that may require additional insurance.

Event that require additional insurance include: Horseback Riding Mountain Biking Shooting Sports Downhill Skiing/Snowboarding Go-Karts Bounce House or Moonwalk Challenge Course or Zip Line Fun Run/Walks Tractors Roadside Clean-Up Sledding/Tobogganing/Tubing ATVs or UTVs Waterfront: Paddle Sports Waterfront: Swimming

Reach out if you have an event planned that you are not sure about. NOT approved 4-H activities include: Paintball, Laser Tag, and the use of Trampolines

This insurance will cover all participants (youth/adult, 4-H and non 4-H). The cost is \$0.30/person/day. Please fill out this form to request insurance a week before your event: <https://forms.gle/Pk9S1xxmXfHmYtgE8>

New, Free 4-H Harmony Guide



Do you ever feel like you're running out of ideas for icebreakers or ways to help youth connect? The 4-H Harmony Guide: Meet Up, Buddy Up, is a set of hundreds of cards and activities you can use with youth of all ages. Make conversations a regular part of 4-H gatherings to help youth feel they belong and build important life skills. Get your free download today!

<https://4h.extension.wisc.edu/2024/11/06/new-free-4-h-harmony-guide/>

Adult Advisor Applications

Applications for adult advisor positions for State & National educational experiences are now open!

This includes adult advisor positions for:

- Space Camp (April)
- Summer Academy (June)
- Citizenship Washington Focus in Washing, D.C. (June - July)
- National 4-H Congress in Atlanta, Georgia (late November)
- Arts Experiences (varies)
- Animal Science Experiences (varies)

Adult advisors are currently enrolled 4-H volunteers who help to guide young people when at these educational experiences. You can find more information along [with the application link here](#).

ADULT ADVISORS NEEDED!

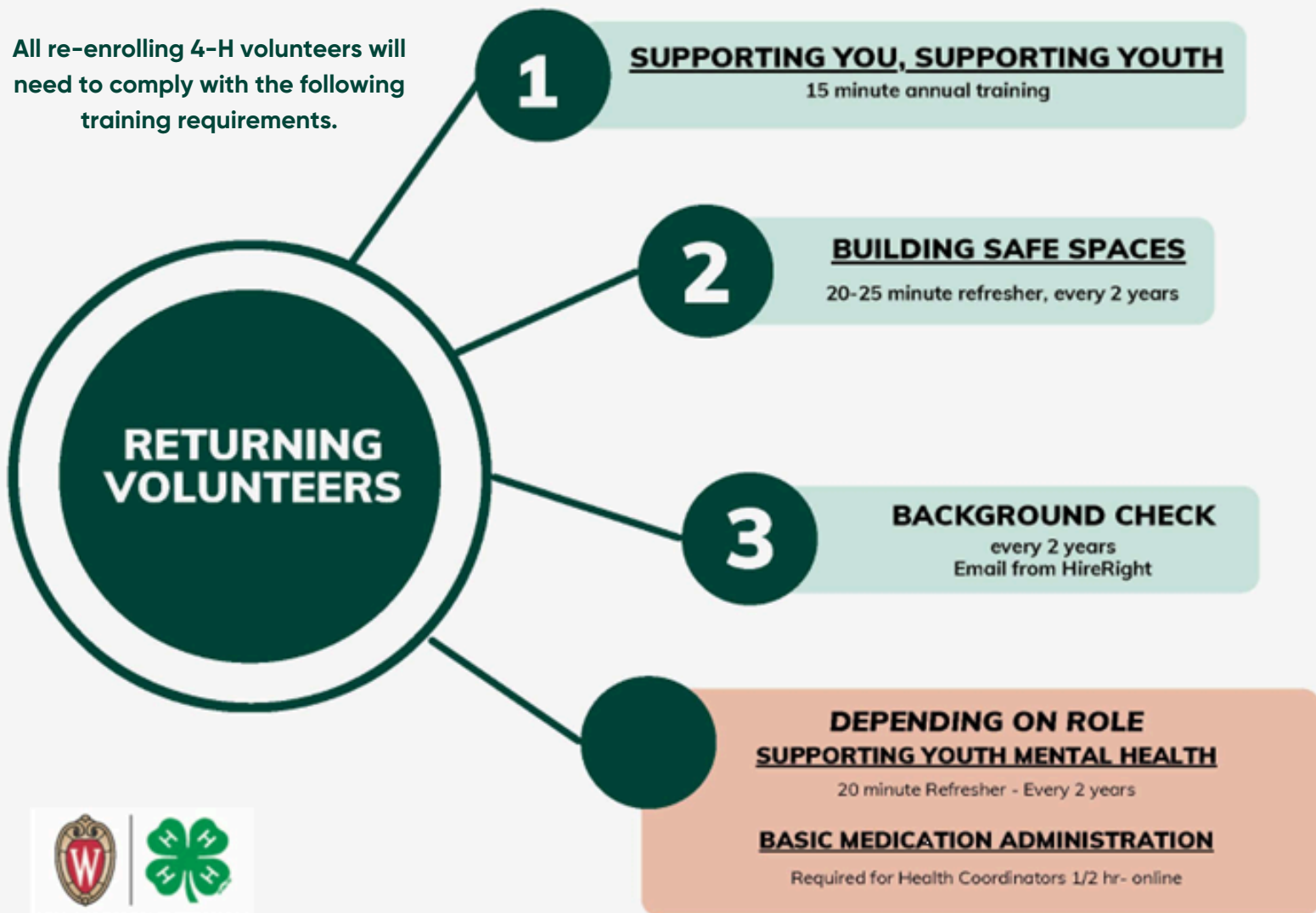
Applications are open to become an adult advisor with Wisconsin 4-H!

Adult advisors have the opportunity to travel across the state and country as they serve as mentors, guides, and support for the youth on different programs.

Applicants must be at least 21 years old at the time of the program.



All re-enrolling 4-H volunteers will need to comply with the following training requirements.



4-H Committees



UW-MADISON EXTENSION

Livestock Committee News:

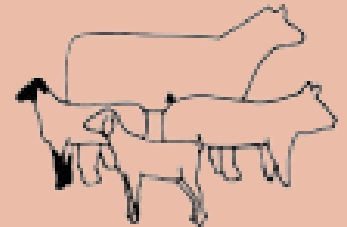
Initial Beef Weigh-in:

Saturday, December 7 @ 9 - 11 am
At St. Croix County Fairgrounds



Rules Meetings:

Tuesday, December 10 @ 6:30 pm
Tuesday, January 14 @ 6:30 pm
Saturday, January 18 @ 9:00 am
All at UW Extension Office, Baldwin



SAVE THE DATES

STATE 4-H LIVESTOCK EVENTS

4-H MEATS JUDGING CONTEST
FEB. 8, 2025

SKILLATHON AND QUIZ BOWL
MARCH 15, 2025

**BOTH EVENTS HELD AT THE
UW MADISON CAMPUS**



Extension
UNIVERSITY OF WISCONSIN-MADISON



ATTENTION COMMITTEE LEADERS...NEWS TO SHARE??

Do you have news to share in the St. Croix County 4-H Communicator? Write up a short article and we will put it in the next communicator.

Share important dates and information for projects and events. Keep everyone informed on the happenings in 4-H!

Send your articles to Laura at laura.hinz@wisc.edu

Alpaca for Sale

Eagle Eye Farm has some alpacas for sale at a very reasonable price. They are hoping they could go to a 4-H family. Please contact Kerri at Eagle Eye Farm. kerri@eagleeyefarm.net



Heritage Dairy Heifer Calf Applications Due: February 1, 2025

The St. Croix County 4-H Dairy Committee is sponsoring a Registered Dairy Calf Award to one outstanding 4-H member. Interested members are asked to write a short essay (100 words or less) on "What would owning your own registered dairy calf mean to your 4-H experience?" Applicants are also asked to list their involvement in 4-H and dairy project activities.

Applications can be found online at <https://stcroix.extension.wisc.edu/files/2024/11/Heritage-Calf-2025-1.pdf> and are due February 1, 2025. All applications should be emailed to Mary Luckwaldt at luckwaldt123@yahoo.com. **Applicants will be asked back for an interview with the selection committee.**

The dairy committee will pay registration transfer fees. Previous winners are not eligible. Decisions of the judges are final. Application is open to 4-H members of all ages. This is an excellent opportunity to add a registered dairy calf to your 4-H project experience. Be sure to thank your 4-H Dairy Committee members for making this possible!



James W. Crowley Dairy Leadership Award

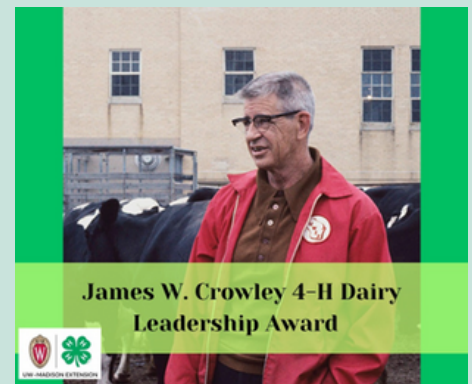
The 4-H Dairy Leadership Award provides recognition to youth who have excelled in their dairy project. As of 1989, the James W. Crowley Dairy Management and Extension Fund assumed sponsorship of this award.

Applications due February 1.

Applications can be found on the Extension Website:

<https://stcroix.extension.wisc.edu/files/2024/11/2025-Crowley-Application-Essay-Questions.pdf>

Please forward completed application to Mary Luckwaldt at luckwaldt123@yahoo.com



WISCONSIN 4-H DAIRY BOWL



January 25, 2025



University of Wisconsin- Green Bay
STEM Innovations Center



Contest to Start at 11:30 am



UW-MADISON EXTENSION

Dairy Committee Meeting

Monday, February 3rd at 7:00 pm
UW-Extension Office, Baldwin



Dog Project 2024/2025 – Year At a Glance

Questions? Please reach out to dogprojectstcroix@gmail.com or message our Facebook group @St.Croix County 4-H Dog Project Members



<p>December 8 1:00 pm</p>	<p>Canine Behavior, Bite Prevention and Aggression. Overdale Kennel and Canine Sports S1000 Westland Drive, Spring Valley, WI. Register: info@overdalekennel.com. If you are interested in participating in our winter rally/agility classes and have NOT attended our dog bite prevention class previously, please attend this seminar. This course is required before training in agility and rally. Free for 4-H dog project members, \$20 for the public.</p>
<p>January 12th 4:00 pm And running consecutively on Sunday evenings.</p>	<p>Agility and Rally Training. This is held indoors at Overdale Kennel and Canine Sports S1000 Westland Drive, Spring Valley, WI. If interested in participating, please email dogprojectstcroix@gmail.com. Requirements:</p> <ul style="list-style-type: none"> • Attendance of (or have attended in previous years) the Bite Prevention Seminar. • Completion of Pre Novice (2+ years in project) • Dogs must be up to date on vaccines required by the dog project. • Special note that all dog project members may attend to observe any practices regardless of years in project, <i>without dogs</i>. <p>This class will run for a consecutive 8 weeks, dates are subject to change.</p>
<p>January 16th 7:00pm</p>	<p>St. Croix County 4-H Dog Project committee meeting. This is a business meeting for the project leaders, held at UWEX 1960 8th Ave. Baldwin, WI. Any parents or youth who want to participate in the planning discussions are welcome.</p>
<p>February 22nd</p>	<p>Clover College. Dog project committee members will be offering a dog-themed class again this year. Stay tuned for more details.</p>
<p>February/March</p>	<p>Educational session TBD</p>
<p><i>Required - Spring Training Season: April-July</i></p>	<p><i>Spring training for the youth/dog teams in obedience is required for all members and is foundational for expanding to additional disciplines. This is preparation for the St. Croix Co. Dog Show.</i></p>
<p>April 3rd and 6th Time TBD</p>	<p>Mandatory Dog Project Kick-Off Meeting. Held at the UWEX, 1960 8th Ave. Baldwin, WI. All dog project members MUST ATTEND ONE of the two dates offered.</p>
<p>April 3rd, 7:00 pm</p>	<p>Dog Bite Prevention presentation. This is a mandatory class for those wanting to start training in agility and rally and is strongly suggested for all members in dog obedience. This educational session will include valuable information about dog behavior and safety, held at UWEX 1960 8th Ave. Baldwin, WI.</p>
<p>April (last week of) date TBD</p>	<p>Dog obedience orientation for Beginners ONLY. Times and places TBD.</p>

Dog Project 2024/2025 – Year At a Glance

Questions? Please reach out to dogprojectstcroix@gmail.com or message our Facebook group @St.Croix County 4-H Dog Project Members



May 1st and running consecutively on Thursday evenings	Dog obedience and showmanship weekly training on Thursday evenings. Times and places TBD.
June	St. Croix County 4-H Dog Project Committee meeting.
June	Dog Project Fun Show. Time and details TBD.
July 12	Dog Project County Fair Show
<i>Optional - Summer Training Season: Aug.-Oct.</i>	<i>Training continues for those qualified and interested to show at the WI state dog show. Annual project year wrap-up.</i>
Aug./Sept.	Optional agility, rally, obedience, showmanship practices resume to prepare for State 4-H dog show participants. Times and places TBD.
Sept./Oct.	Dog project promotional events at White Pine Berry Farm and Camp St. Croix. Dates and Times TBD.
Oct.	Annual Dog Project Meeting
Oct.	State 4-H Dog Show
<i>Winter Break: Nov.-Dec.</i>	

COMMITTEE VOLUNTEER OPPORTUNITY:

We're in need of several project and committee leaders aimed at enhancing our 4-H programs and activities! We are looking for enthusiastic volunteers to help lead these projects/committees and bring fresh ideas to our 4-H community.

Available (but not limited) 4-H Committee and Project Areas:

- | | | |
|------------------------------|------------------------|----------------------------|
| 1. Foods & Nutrition Project | 3. Ambassadors | 5. Sewing/Quilting Project |
| 2. STEM Project | 4. Woodworking Project | 6. Photography Project |

Why Volunteer?

- Gain leadership experience
- Make a positive impact in our community
- Have fun and meet new friends!

If you're interested in volunteering for one of these committees, please contact Eileen eileen.vandyk@wisc.edu or Laura laura.hinz@wisc.edu.



Thank you for your continued support and commitment to making our 4-H program thrive!

Friends of the St. Croix County Fairgrounds

News:

1. Wanted – 4-H clubs who can use some extra financial support for their projects, see details below.
2. Maytober was another great success!! The combination of the sale and cash donations raised from the event mailing came close to \$10,000 with additional items in upcoming Smith Auctions; a great finish to a successful year!!! . A big thank you to all who have made this event a great success – donors, buyers and most of all, Smith Auctions!!!
3. Our very best wishes for the Holiday Season and a great 2025

Notes:

If you have anything to donate, please contact Chris Libbey (651) 247-0395 or Terry Mitchell (715) 619-0442. Donations of used ag equipment are great; for higher value items, we are also open to consignment. Proceeds will be used towards the Tiffany Creek Shelter. (Note: we accept donations all year and will run them in the appropriate sale.)

Club Development Grants: Friends has a budget of \$1,000 to support Club Development Grants. Grants can be used for literally any project that helps the clubs thrive; service projects to recreation. We are accepting applications through the end of December. Our goal is to help enrich programming for the 2024-2025 Club Year. Contact Steve Smart at desscs51@baldwin-telecom.net to receive an application.

How you can help:

1. Look for items to donate/consign that we can sell through Smith Sales.
2. Participate in your company volunteer matches. For example, 3M active/retiree employees giving 25 hours of volunteer service to a qualifying non-profit (Friends) earn a \$500 matching grant from 3M (The 3M grants includes 4-H Club leadership, Project committees, Fair & Rodeo)
3. Use social media to promote our fundraising efforts – the impact can be huge!
4. Interested in being part of a successful fund raising organization? Consider becoming a Friends board member – see contact # below.

We need to continue to be creative in our fund raising efforts. Please feel free to contact Friends' Board Members with your suggestions – all ideas are welcome. We also welcome new members to our team – if interested, contact Chris Libbey at (651) 247-0395



Space Camp

Registration for 2025 4-H Space Camp opens this week in 4HOnline!

Registration is open to youth in grades 6-8 who are newcomers to Space Camp. Space Camp will take place from May 1-5, 2025. This educational experience is a wonderful opportunity for youth to learn about aerospace, STEM, explore Space Camp, meet new people, and more!

Registration will close on December 15th. You can read more on our website: go.wisc.edu/spacecamp

WISCONSIN 4-H SPACE CAMP

May 1-5, 2025 Huntsville, Alabama

OPEN TO YOUTH GRADES 6-8

Get involved in:

- Simulated Space Missions
- Learning and using Space Simulators
- Building and launching your own model rockets
- Real space training simulation etc.

Registration open from Nov 15 - Dec 15 via 4HOnline

ARTS AMBASSADORS APPLICATIONS



NOW OPEN!

APPLY TO THE

- **ART TEAM**
- **DRAMA COMPANY**
- **COMMUNICATIONS TEAM!**

OPEN TO 4-H MEMBERS IN GRADES 9-13

Applications are open from Nov. 15th- Dec. 20th!



2025 Arts Ambassadors Application

Apply to participate in the 2025 Arts Ambassadors! This includes the applications for Art Team, Drama Company, and COMM Team. Applications are open to youth in grades 9-13 and adult volunteers. More information is available on our website:

<https://4h.extension.wisc.edu/opportunities/statewide-events-and-opportunities/state-arts-teams/>

Nominations for the 2025 Wisconsin 4-H Hall of Fame are OPEN!

About the Wisconsin 4-H Hall of Fame

The genesis for our Hall of Fame began with discussions about how UW–Madison Division of Extension 4-H Youth Development should celebrate our Centennial in 2014. Three broad themes came out of initial planning: we need to capitalize on this opportunity for the future; take pride in our accomplishments; and celebrate our past.



This Hall of Fame is established to recognize 4-H volunteers, financial supporters, staff, and pioneers who made major contributions to the 4-H movement at the local, state, and national levels. The candidates represent 4-H in the broadest sense – they may be 4-H volunteers, financial supporters, UW–Madison Division of Extension professionals, or staff employees who had an impact on the lives of children, their community, or state through significant contributions of time, energy, or financial resource to 4-H and its members. The names of some are very recognizable, as sites and buildings bear their names. Others, while not broadly known, have transformed the lives of children and families with whom they've worked and the communities in which they've lived. The Hall of Fame preserves Wisconsin's 4-H history and development while increasing awareness of the Wisconsin 4-H Youth Development program.

100 Hall of Fame laureates were inducted in 2014 to coincide with the Wisconsin 4-H Youth Development Centennial Celebration. Moving forward, yearly nominations will be taken to select up to 10 honorees each year to keep the Wisconsin 4-H Hall of Fame growing.

Nomination forms are available at <https://4h.extension.wisc.edu/wisconsin-4-h-hall-of-fame/>. Deadline is January 15th.

Wisconsin 4-H Foundation Kicks off Photography Contest



The Wisconsin 4-H Foundation has kicked off a contest that challenges all 4-H members to explore their creativity!

The Wisconsin 4-H Foundation Celebrates the Arts Photography Contest is open to any current Wisconsin 4-H member, and the Wisconsin 4-H Foundation is awarding cash prizes. The contest will be held virtually, with photos of all entries submitted electronically. Entries are being accepted now through January 31, 2025.

[Entry info found here](#)



Extension
UNIVERSITY OF WISCONSIN-MADISON

Extension Pierce, St. Croix, Barron Counties
Becky Brathal
Regional Crops Educator
becky.brathal@wisc.edu | 651-302-6520

Private Applicator Training and Testing



Attention Private Applicator:

What you need to know in 2025!

1. Order your training manual.
2. Sign up for one of the county wide watch parties.
3. Training begins at 9:00 AM followed by an open book test.

Visit the Wisconsin Pesticide Applicator website to order your manual and sign up:

<https://fyi.extension.wisc.edu/pat/private-applicators/> or

scan the QR code below!



3 Locations

January 22nd, 9:00 AM

Pierce County
432 W Main St.
Courthouse Annex
Ellsworth, WI 54011

January 30th, 9:00 AM

Barron County
330 E Monroe Ave.
Room 110
Barron, WI 54812

February 21st, 9:00 AM

St. Croix County
1960 8th Ave.
Baldwin, WI 54002

\$10 charge for class
at registration

Questions?

Contact Becky Brathal at
becky.brathal@wisc.edu or
651-302-6520