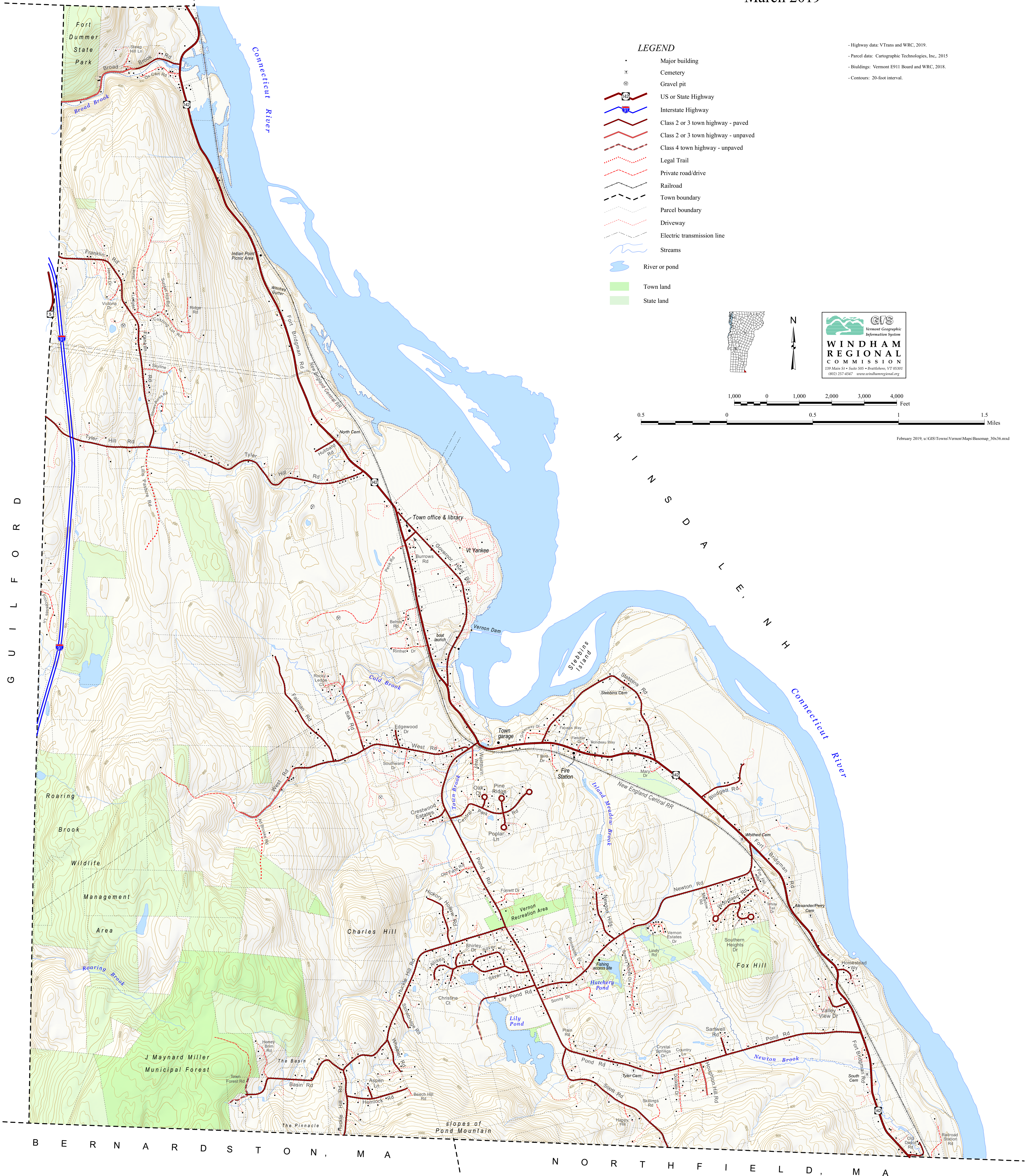


Topographic Base Map Town of Vernon, Vt.

March 2019

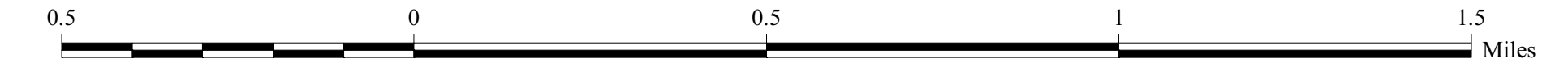
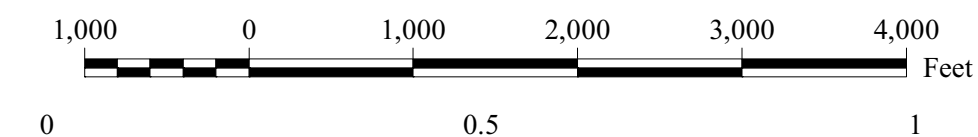
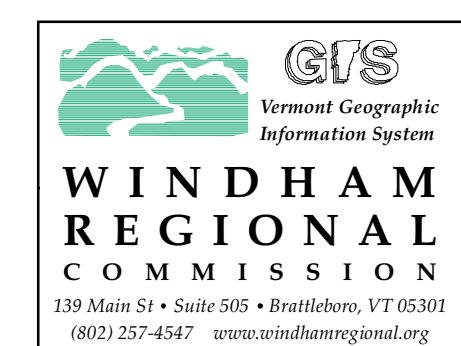
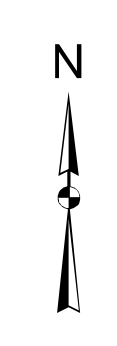
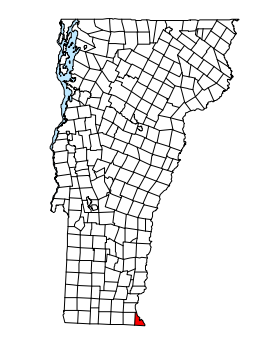
BRATTLEBORO



LEGEND

- Major building
- ☠ Cemetery
- Ⓢ Gravel pit
- US or State Highway
- Interstate Highway
- Class 2 or 3 town highway - paved
- Class 2 or 3 town highway - unpaved
- Class 4 town highway - unpaved
- Legal Trail
- Private road/drive
- Railroad
- Town boundary
- Parcel boundary
- Driveway
- Electric transmission line
- Streams
- River or pond
- Town land
- State land

- Highway data: VTrans and WRC, 2019.
 - Parcel data: Cartographic Technologies, Inc., 2015.
 - Buildings: Vermont E911 Board and WRC, 2018.
 - Contours: 20-foot interval.



February 2019, u:\GIS\Town\Map\Map\Basemap_30x36.mxd

GUILFORD

HINSDALE

BERNARDSTON, MA

NORTHFIELD, MA