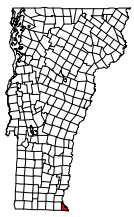







Natural Resources

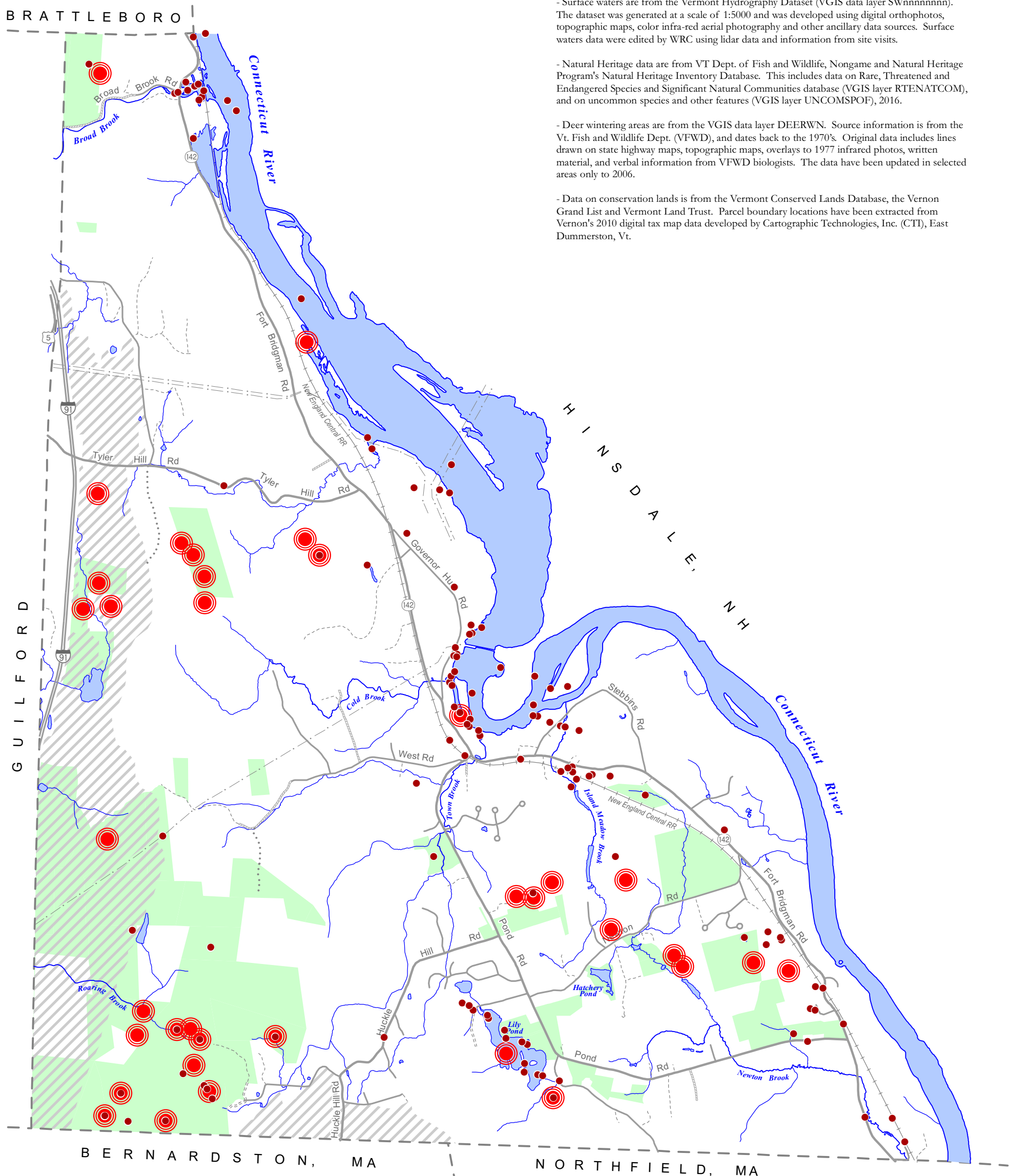
Town of Vernon, Vt.

May 2018



0.5 0 0.5 1 Mile
 scale 1:36,000 1 inch = 3,000 feet

-  Streams, river, pond
-  Significant Natural Community
-  Natural Heritage occurrence: plant or animal
-  Deer wintering area
-  Conservation land, public or privately owned



Data sources:

- Surface waters are from the Vermont Hydrography Dataset (VGIS data layer SWnnnnnnnn). The dataset was generated at a scale of 1:5000 and was developed using digital orthophotos, topographic maps, color infra-red aerial photography and other ancillary data sources. Surface waters data were edited by WRC using lidar data and information from site visits.

- Natural Heritage data are from VT Dept. of Fish and Wildlife, Nongame and Natural Heritage Program's Natural Heritage Inventory Database. This includes data on Rare, Threatened and Endangered Species and Significant Natural Communities database (VGIS layer RTENATCOM), and on uncommon species and other features (VGIS layer UNCOMSPOF), 2016.

- Deer wintering areas are from the VGIS data layer DEERWN. Source information is from the Vt. Fish and Wildlife Dept. (VFWD), and dates back to the 1970's. Original data includes lines drawn on state highway maps, topographic maps, overlays to 1977 infrared photos, written material, and verbal information from VFWD biologists. The data have been updated in selected areas only to 2006.

- Data on conservation lands is from the Vermont Conserved Lands Database, the Vernon Grand List and Vermont Land Trust. Parcel boundary locations have been extracted from Vernon's 2010 digital tax map data developed by Cartographic Technologies, Inc. (CTI), East Dummerston, Vt.