



KENTUCKY (7-12-0, 2-7-0 SEC)

at **GEORGIA (4-11-2, 0-8-1 SEC)**

Oct. 26 / 7 p.m. ET / SEC Network+, ESPN3, ESPN app
UGA Soccer Stadium (Athens, Georgia)

Media Relations contact:
Chris Shoals (cmsh223@uky.edu) • 513.312.2489

WILDCATS CLOSE OUT SEC PLAY AT GEORGIA WITH SPOT IN ORANGE BEACH ON THE LINE

The Kentucky women's soccer team will continue its fight to book a ticket to Orange Beach on Thursday night as the Wildcats travel to Athens, Georgia for a match with the UGA Bulldogs. It is the final regular season match of the 2017 season with kick-off slated for 7 p.m. ET from the UGA Soccer Stadium, which is newly remodeled for 2017.

The Wildcats enter Thursday night sitting on six SEC points - which is three below the current cutoff to make Orange Beach. If UK were to beat Georgia, the Wildcats could just be bound for Orange Beach with some help around the SEC. The following are UK's clinching scenarios:

-UK wins AND Mississippi State loses AND LSU/Missouri tie OR

-UK wins AND Mississippi State loses AND LSU beats Missouri

The current SEC standings have Mississippi State on nine points, so if the Bulldogs pick up a result against Texas A&M - that eliminates UK, LSU and Mizzou from Orange Beach. If Texas A&M were to win, all three teams then become factors, as they can all reach nine points and tie Mississippi State with a win.

QUICK NOTES

- The Wildcats have 10 freshman this season, its biggest incoming class since 2012 (12 players).
- Kentucky has had nine opening day projected starters miss 2+ matches this year w/ an injury.
- The Wildcats have played 10 teams ranked, or receiving votes in the USCA Top-25.
- UK has already surpassed its win total this year (7) under Ian Carry, than it had all of 2016 (5).
- Kentucky's win over LSU was UK's first SEC win in 342 calendar days.
- UK's 2-1 OT win on Sunday, Aug. 27 was UK's first OT win in over three years (0-5-9 since last win in an overtime match).
- Kentucky's 1-0 win at MSU was its first SEC road shutout since September of 2015 (Alabama).
- Evangeline Soucie was named the SEC Defensive Player of the Week on Oct. 2.
- UK's back-to-back-to-back shutout wins (WIU, Ohio, LIP) were the program's first since 2015
- UK has four players from international rosters on its team this year: Yuuka Kurosaki (Japan), Hollie Olding (England), Tanya Samarzich (Mexico) and Sophie Stewart-Hobbs (New Zealand).
- Kentucky's 2017 incoming freshman class was ranked as high as No. 4 by recruiting services.
- The Wildcats have had 11 different players score a goal this season.
- UK is picked to finish 12th in the Southeastern Conference by the coaches.
- This season marks the first season for UK on its new \$2 million soccer-specific training facility.

PROJECTED UK STARTERS (BASED OFF LAST MATCH)

No.	Name	Pos.	Cl.	No.	Name	Pos.	Cl.
24	Abigail Zoeller	M/GK	Fr.	17	Katy Keen	M	Sr.
GAA: 2.33 GA: 6 Svs: 11 ShO: 0				G: 1 Assts: 3 Min: 1,637 Pts: 5 Sh: 24			
2	Foster Ignoffo	F	So.	18	Sophie Babo	D	Jr.
G: 2 Assts: 3 Min: 1,351 Pts: 7 Sh: 16				G: 2 Assts: 1 Min: 870 Pts: 5 Sh: 25			
6	Miranda Jimenez	F	Fr.	21	Eva Mitchell	D	Fr.
G: 3 Assts: 3 Min: 1,380 Pts: 9 Sh: 28				G: 3 Assts: 2 Min: 1,500 Pts: 8 Sh: 16			
10	Yuuka Kurosaki	M	Fr.	22	Danielle Hayden	D	So.
G: 2 Assts: 1 Min: 832 Pts: 5 Sh: 9				G: 0 Assts: 0 Min: 1,093 Pts: 0 Sh: 1			
12	Kelly Novak	D	Sr.	25	Payton Atkins	D	Jr.
G: 0 Assts: 0 Min: 1,562 Pts: 0 Sh: 4				G: 1 Assts: 0 Min: 1,218 Pts: 2 Sh: 13			
15	Gina Crosetti	M	So.				
G: 1 Assts: 1 Min: 1,633 Pts: 3 Sh: 14				*based on previous match			

SCHEDULE/RESULTS (7-12-0, 2-7-0 SEC)

Date	Opponent	Result/Time
Aug. 18 (F)	at #9 Wisconsin [Big 10 Network]	L, 1-0
Aug. 20 (Su)	at #19 Marquette [BEDN]	L, 2-1
Aug. 24 (Th)	EASTERN KENTUCKY [SECN+]	W, 3-1
Aug. 27 (Su)	WYOMING [SECN+]	W, 2-1 (2ot)
Sept. 1 (F)	LOUISVILLE [SECN+]	L, 3-1
Sept. 3 (Su)	at #8 Florida State	L, 4-0
Sept. 8 (F)	WESTERN ILLINOIS [SECN+]	W, 1-0
Sept. 10 (Su)	at Ohio	W, 3-0
Sept. 15 (F)	LIPSCOMB [SECN+]	W, 2-0
Sept. 17 (Su)	at #21 Tennessee* [ESPNNU]	L, 3-0
Sept. 21 (Th)	#3 SOUTH CAROLINA* [SECN+]	L, 1-0
Sept. 24 (Su)	at Auburn* [SECN+]	L, 3-0
Sept. 29 (F)	LSU* [SECN+]	W, 3-0
Oct. 5 (Th)	VANDERBILT* [SECN+]	L, 2-0
Oct. 8 (Su)	at Mississippi State* [SECN+]	W, 1-0
Oct. 12 (Th)	MISSOURI* [SEC Network]	L, 2-1
Oct. 15 (Su)	LOYOLA-CHICAGO [SECN+]	L, 5-2
Oct. 19 (Th)	at #20 Florida* [SECN+]	L, 2-0
Oct. 22 (Su)	ARKANSAS* [SECN+]	L, 2-0
Oct. 26 (Th)	at Georgia* [SECN+]	7 p.m.
10/29-11/5	2017 SEC Tournament	TBA

*SEC match

MATCH CENTER

KENTUCKY (7-12-0, 2-7-0 SEC)	
Rankings (USCA/TopDrawer):	NR/NR
NCAA RPI:	115th
Last Game:	L, 2-0 vs. Arkansas
All-time vs. Georgia:	7-12-3
Head Coach:	Ian Carry (1st year)
Overall Record:	7-12-0
at Kentucky:	1-12-0
Last five games:	1-4-0
GEORGIA (4-11-2, 0-8-1 SEC)	
Rankings:	NR/NR
NCAA RPI:	108th
Last Game:	T, 1-1 vs. South Carolina
All-time vs. Kentucky:	12-7-3
Head Coach:	Billy Lesesne (3rd year)
Overall Record:	15-34-4
at Georgia:	Same
Last five games:	0-4-1



TOUGHNESS. HARD WORK. ACCOUNTABILITY.
2017 KENTUCKY WOMEN'S SOCCER



WSC: Chris Shoals
 cmsh223@uky.edu

KENTUCKY SOCCER BI-WEEKLY CALENDAR

859.257.3838
 Fax 859.323.4310

MONDAY - 23	TUESDAY - 24	WEDNESDAY - 25	THURSDAY - 26	FRIDAY - 27	SATURDAY - 28	SUNDAY - 29
Off Day	Training 8 a.m. - 10 a.m.	Training 8 a.m. - 10 a.m. Media: 10:05am ET Bus to Athens, Ga.	at Georgia 7 p.m. ET UGA Soccer Stadium Athens, Ga. SEC Network+	Bus directly to Orange Beach, Ala.	Training in Orange Beach, Ala.	SEC Tournament Opening Round TBA Orange Beach SportsPlex SEC Network
MONDAY - 30	TUESDAY - 1	WEDNESDAY - 2	THURSDAY - 3	FRIDAY - 4	SATURDAY - 5	SUNDAY - 6
Training in Orange Beach, Ala.	SEC Tournament Quarterfinals TBA Orange Beach SportsPlex SEC Network	Training in Orange Beach, Ala.	SEC Tournament Semifinals TBA Orange Beach SportsPlex SEC Network	Training in Orange Beach, Ala.	Training in Orange Beach, Ala.	SEC Tournament Championship TBA Orange Beach SportsPlex SEC Network

QUICK FACTS

Location: Lexington, Ky.
Founded: 1865
Enrollment: 30,000
Nickname: Wildcats
Colors: Blue (PMS 286) and White
Conference: Southeastern (Eastern Division)
Stadium: Wendell & Vickie Bell
 Soccer Complex (1,500)
President: Dr. Eli Capilouto
Athletics Director: Mitch Barnhart
Faculty Representative: Joseph L. Fink III

MEDIA RELATIONS

Asst. AD for Media Relations (Department SID)
 Tony Neely - 859.257.8411
 tneely@uky.edu
 Director of Strategic Communication (Social)
 Guy Ramsey - 859.257.6846
 guy.ramsey@uky.edu
 Associate Media Relations Director (MBB #1)
 Eric Lindsey - 859.257.8429
 Eric.lindsey@uky.edu
 Assoc. Media Relations Director (Football #1)
 Susan Lax - 859.257.8420
 slax0@uky.edu
 Associate Media Relations Director (WBB, FB)
 Evan Crane - 859.257.8431
 wesley.crane@uky.edu
 Associate Media Relations Director (VB, MBB)
 Deb Moore - 859.257.8506
 Deb.Moore@uky.edu
 Assistant Media Relations Director (BSB)
 Matt May - 859.257.3838
 Matt.May@uky.edu
 Assistant Media Relations Director (MSC, TF)
 Jake Most - 859.257.3838
 jake.most@uky.edu
Assistant Media Relations Director (WSC, SB)
Chris Shoals - 859.257.3838
cmsh223@uky.edu
 Administrative Support Associate (Credentials)
 Stephanie Guy - 859.257.8309
 stephanie.guy@uky.edu

2017 KENTUCKY ROSTER

#	Name	Pos	Ht.	Class	Hometown/Previous School
2	Foster Ignoffo	F	5-5	So.	Geneva, Ill / Geneva HS
3	Jada Holmes	D	5-4	So.	McKinney, Texas / McKinney HS
4	Hollie Olding	M	5-10	Fr.	Chichester, England / Chelsea FC
5	Taya Edwards	D	5-6	Fr.	Jacksonville, Fla. / The Bolles School
6	Miranda Jimenez	F	5-4	Fr.	Tulare, Calif. / Mission Oak HS
8	Tate Barney	M	5-7	So.	Plainfield, Ill. / Plainfield HS
9	Marissa Bosco	F	5-2	So.	St. Charles, Ill. / St. Charles HS
10	Yuuka Kurosaki	M	5-4	Fr.	Fukuoka, Japan / Fujieda Junsu HS
11	Julia Grosso	F	5-8	Fr.	Sunrise, Fla / St. Thomas HS
12	Kelly Novak	M	5-5	Sr.	Strongsville, Ohio / Strongsville HS
13	Jordan Holt	D	5-10	So.	Granite Bay, Calif. / Granite Bay HS
14	LaMaya Williams	F	5-4	So.	Gilbert, Ariz. / Chandler HS
15	Gina Crosetti	M	5-3	So.	Oakland, Calif. / Miramonte HS
17	Katy Keen	M	5-8	Sr.	Zionsville, Ind. / Penn State University
18	Sophie Babo	D	5-9	Jr.	Maple Grove, Minn. / Orono HS
19	Caroline Newland	D	5-7	Fr.	Henderson, Ky. / Reitz Memorial HS
20	Jessica Lazo	M	5-11	Fr.	Long Beach, Calif. / Palos Verdes HS
21	Eva Mitchell	M	5-7	Fr.	Nicholasville, Ky. / West Jessamine HS
22	Danielle Hayden	D	5-6	So.	Indianapolis, Ind. / Pike HS
23	Tanya Samarzich	F	5-8	Sr.	Upland, Calif. / University of Southern California
24	Abigail Zoeller	M	5-6	Fr.	Independence, Ky. / Simon Kenton HS
25	Payton Atkins	D	5-10	Jr.	Cincinnati, Ohio / Turpin HS
27	Sophie Stewart-Hobbs	D	5-5	Fr.	Tauranga, New Zealand / Saint Kentigern
33	Evangeline Soucie	GK	5-9	So.	Milford, N.J. / Delaware Valley HS

Head Coach: Ian Carry (Bell College of Technology, 2001, First season as HC, fifth season at UK overall)
Assistant Coach: Melissa Charloe (Penn State, 2010, First season)
Assistant Coach: Jason Goodson (Recruiting coordinator, Third season)
Sport Administrator: Stephanie Simmons (Ohio, 1997, Third season)
Athletic Trainer: Hailey Rockwood (Utah, 2016, Second season)
Sports Information Director: Chris Shoals (Kentucky, 2014, Eighth season)

2017 PRONUNCIATION GUIDE

Sophie BABO	Babe-O	EVANGELINE SOUCIE	E-Van-Ja-Leen Soo-See
Melissa CHARLOE	SHAR-low	LaMAYA Williams	Luh-Mi-UH
TAYA Edwards	TAY (like lay)-uh	Abigail ZOELLER	Zaw (like saw)-ler
Julia GROSSO	GROSS-oh		
Foster IGNOFFO	Igg-Noff-O		
YUUKA KUROSAKI	YOU-Kuh KURR-Uh-Saw-Kee		
Jessica LAZO	Laws-O		
EVA Mitchell	EE-vuh		
TANYA SAMARZICH	TON-ya Suh-MAR-ZICH		



TOUGHNESS. HARD WORK. ACCOUNTABILITY.

2017 KENTUCKY WOMEN'S SOCCER



KENTUCKY INJURY REPORT

Injury statuses are for the Georgia match:

*Jada Holmes Suffered a leg injury in the spring ... Out for the season.

*Marissa Bosco Suffered a torn MCL in the spring training with her club ... Out for the season.

*Tanya Samarzich Suffered a torn left ACL at Florida State on Sept. 3 in a non-contact injury ... Out for the season ... She missed the 30% redshirt cutoff by 47 minutes, so she will be eligible for a medical redshirt in 2018.

*Yuuka Kurosaki Has an MCL sprain in her right leg ... She is a game-time decision ... She has missed seven matches this season with the MCL sprain, but returned vs. LSU for the first time in eight matches.

*Jessica Lazo Suffered an ankle injury vs. Auburn ... She is out for the match, which will be her eighth missed match in a row.

*Evangeline Soucie Suffered a concussion against Mizzou ... She is currently in concussion protocol and will be evaluated by the UK Medical Staff for her status on Thursday night.

International Duty

*Hollie Olding Was back in her home nation of England helping the Three Lionesses qualify for the 2019 EURO's. She missed the Loyola-Chicago, Florida and Arkansas matches.

Dicipline

*Foster Ignoffo Was sent off with two yellow cards on Oct. 8 at Mississippi State ... She sat out the Mizzou match (L, 2-1) on Oct. 12 due to the red card.

IAN CARRY TAKES OVER

Ian Carry, who has been with the Kentucky women's soccer team the past four seasons as an assistant coach, was named the third head coach in Kentucky program history, UK director of athletics Mitch Barnhart announced on Tuesday, Nov. 22, 2016.

He was formally introduced to the team in a phone call (most kids were gone from campus on Thanksgiving Break) with Mitch Barnhart and sport administrator, Stephanie Simmons.

The contract for Carry is a two-year agreement with a school option for two additional years.

THE CARRY TIMELINE

The following is a timeline of the Carry family's crazy late fall and winter season:

Nov. 4, 2016 - Kentucky administration elects to make a coaching change

Nov. 21, 2016 - Mitch Barnhart offers Ian Carry the head coaching job at UK. Carry then accepts.

Nov. 22, 2016 - Mitch Barnhart announces publicly that Ian Carry will be the next head coach of UK Women's Soccer

Nov. 23, 2016 - Introductory press conference is held at Rupp Arena

Nov. 24, 2016 - Carry announces that Jason Goodson will stay on staff as assistant coach and recruiting coordinator.

Dec. 15, 2016 - Ian marries his wife, Stephanie in a wedding held in Lexington, KY.

Dec. 20, 2016 - Carry announces Melissa Charloe as the newest assistant coach.

Jan. 11, 2017 - Carry meets in-person with the team for the first time as head coach.

INTERNATIONAL FLARE

Regarded as one of the best international recruiting tandems in the country, Ian Carry and Jason Goodson have teamed up to bring in four international players to the UK Women's Soccer team. All four players have played in international matches for their countries - with two of them appearing in a FIFA World Cup. The four international players on the 2017 roster are the most internationals on an opening day roster in UKWS program history.

- Yuuka Kurosaki (Japan)
- Hollie Olding (England)
- Tanya Samarzich (Mexico)
- Sophie Stewart-Hobbs (New Zealand)

NEW PRACTICE FACILITY

Kentucky opened the Wendell & Vickie Bell Soccer Complex in 2014 - but just this pre-season - opened a brand new soccer-specific training facility in the same complex. The new \$2 million project features a field and a half of bermuda grass (same as game field playing surface). In addition, it includes a separate area of the same artificial turf used at the 2015 FIFA Women's World Cup, and a storage facility with restrooms.

SPORTS SCIENCE

Kentucky has long been one of the leaders amongst Sports Science in all athletics. The Wildcats began a Sports Science partnership with Nike back in 2010 - and have been one of the leading institutions for research since then. With the addition of Chris Morris to

SEC STANDINGS

Table with 5 columns: Team, SEC, Pts, All, Streak. Lists SEC teams from 1. S. Carolina to 14. Georgia, with Kentucky at 11.

* Top 10 teams qualify for SEC Tournament in Orange Beach, Ala.

WEEKLY SEC SCHEDULE

Thursday, October 26

- *Kentucky at Georgia 7:00 p.m. ET
South Carolina at Florida 7:00 p.m. ET
*LSU at Missouri 7:30 p.m. ET
Alabama at Ole Miss 8:00 p.m. ET
Tennessee at Arkansas 8:00 p.m. ET
*Texas A&M at Mississippi St. 8:00 p.m. ET
Auburn at Vanderbilt 9:00 p.m. ET
*= denotes match that impacts UK

UK Clinching Scenarios for Orange Beach

- UK wins AND Mississippi State loses AND LSU/Missouri tie OR
-UK wins AND Mississippi State loses AND LSU beats Missouri OR





TOUGHNESS. HARD WORK. ACCOUNTABILITY.

2017 KENTUCKY WOMEN'S SOCCER



NATIONAL POLLS

Table with 2 columns: USCA (Oct. 24) and TopDrawer (Oct. 23). Lists top 25 teams for each poll.

USCA Southeast Regional Poll

Table with 2 columns listing top 10 teams in the USCA Southeast Regional Poll.

the staff, UK women's soccer has taken it to a new level. The Wildcats every practice have a member on-site that is watching their Catapult heart rate monitors and GPS trackers to track sprints, distances, etc.

WILDCATS BLANK MISSISSIPPI STATE

Sunday's win at Mississippi State was UK's first road SEC shutout since Sept. of 2015 at Alabama.

It was also UK's first win at Mississippi State since 2013, and the first road win under head coach Ian Carry in the SEC.

MULTI GOALS IS THE SOLUTION

Kentucky only has one loss this season when scoring two or more goals in a match. That happened on Sunday in a 5-2 loss against Loyola-Chicago.

2017 Multi-Point Games (Not including one goal)

Table with 6 columns: Player, 2, 3, 4, 5+, Total. Lists Sophie Babo and Tanya Samarzich.

Active Wildcat Goal Scorers Last Goal Scored (Bold = 2017)

Table with 2 columns: Player and vs. Opponent (Date). Lists scorers like Atkins, Babo, Bosco, etc.

2017 Game-Winning Goals

Table with 2 columns: Player and vs. Opponent (Date). Lists game-winning goals by Tanya Samarzich, Eva Mitchell, etc.

2017 Shutouts

Table with 2 columns: Player and vs. Opponent (Date). Lists shutouts by Evangeline Soucie.

BIG WIN OVER LSU

Kentucky's 3-0 win over LSU was UK's first SEC win in 342 calendar days. The Wildcats and Tigers were deadlocked at 0-0 before UK exploded for three goals in less than 10 minutes to put the match away and give Ian Carry his first SEC win as Kentucky's head coach.

ALREADY BETTER THAN 2016

UK has already surpassed its win total from all of 2016 with its 3-0 win against LSU on Sept. 29. Kentucky had just five wins in 2016.

UK now has seven wins on the season - two higher than 2016.

WILDCATS WHEN

Table with 2 columns: MONTH and Win-Loss-Draw record for each month.

TYPE OF GAME

Table with 2 columns: Type of Game and Win-Loss-Draw record.

KENTUCKY SCORING

Table with 2 columns: Scoring method and Win-Loss-Draw record.

OPPONENT SCORING

Table with 2 columns: Scoring method and Win-Loss-Draw record.

KENTUCKY SHOOTING

Table with 2 columns: Shooting metric and Win-Loss-Draw record.

OPPONENT SHOOTING

Table with 2 columns: Shooting metric and Win-Loss-Draw record.

MISCELLANEOUS

Table with 2 columns: Miscellaneous category and Win-Loss-Draw record.



TOUGHNESS. HARD WORK. ACCOUNTABILITY.

2017 KENTUCKY WOMEN'S SOCCER



UK IN OVERTIME GAMES

Table listing 100 women's soccer games with dates, opponents, scores, and overtime status.

SOUICIE NAMED SEC DEFENSIVE PLAYER OF THE WEEK

Evangeline Soucie's shutout of LSU, the first SEC shutout of her career, earned her SEC Defensive Player of the Week honors.

Ian Carry has now coached four different

UK's to six different SEC weekly awards since he stepped foot in Lexington in 2013.

ABOVE THE CUTOFF

Sitting on six points in the SEC, the Wildcats would make the SEC Tournament if the season ended today.

KENTUCKY IN SEC STATS

(As of Oct. 23)

Table showing team statistics for Kentucky in the SEC, including shots, goals, assists, and saves.

Table showing individual player statistics, specifically for Evangeline Soucie's saves and saves per match.

UK BY MONTH

Table showing Kentucky's record by month for August, September, October, and November.



TOUGHNESS. HARD WORK. ACCOUNTABILITY.

2017 KENTUCKY WOMEN'S SOCCER



the top 10 of the SEC at any point a year ago.

BABO'S BRACE

Sophie Babo had her second-career brace on Sept. 29 vs. LSU. Both of her multi-goal games have been in SEC play, as her prior two-goal performance was against Tennessee in 2016 - a match that UK drew with the Vols, 2-2.

DRAWING FIRST BLOOD

The team that scores first has had a huge effect on UK's matches this season:

When UK scores first: 7-0-0

When opponent scores first: 0-12-0

STRENGTH OF SCHEDULE

UK's strength of schedule is always a point of pride - and this year is no difference, currently ranked as the No. 12 non-conference SOS. The Wildcats will play 10 games in the Southeastern Conference in addition to 10 non-conference games. UK faces Wisconsin, Marquette, former national champion Florida State and Ohio all on the road in non-conference action. UK's non-conference strength of schedule has been in the top 25 nationally five of the last six years.

OLDING CALLED INTO ENGLAND CAMP

Freshman midfielder Hollie Olding missed Kentucky's matches against Ohio and Lipscomb, as she was called into England Women's National Team Camp. She became the first UK player ever to be called into a country's national team camp as an active member of the roster. Arin Gilliland was called into USWNT camp, but as a member of the Chicago Red Stars in October of 2016.

She was then called into England camp again in October to help the Three Lionesses qualify for the 2019 EURO Championships. She will miss the Loyola-Chicago, Florida and Arkansas matches.

BREAKING THE OVERTIME CURSE

UK knocked off Wyoming 2-1 in overtime on Sunday, Aug. 27, marking UK's first OT win since the opening weekend of the 2014 season at Seattle when UK won on a corner kick that went straight in off of the service from Cara Ledman. In UK's prior 14 matches, UK was 0-9-5 in extra time dating back to 2014.

NEW TRAINING STYLE

As part of Ian Carry's stamp on the program, training sessions have become much more organized and higher in intensity in the new structure. The team meets in the team lounge 45 minutes prior to the session to go over the plan for the session and drills before an "activation" phase - which is used as a warm-up. During the activation, players can have music through the speakers and the players participate in rondo, footwork drills and passing drills

before a short, high-intensity session. This is new to the team for 2017.

BACK-TO-BACK SHUTOUTS

Kentucky shutout Western Illinois (1-0) and Ohio (3-0), marking the Wildcats' first back-to-back winning shutouts since the 2015 season.

COACHING STAFF RESPONSIBILITIES

Ian Carry - Head coaching duties, Goalkeepers, Opposition scouting, forwards

Jason Goodson - Back line organization, Recruiting coordinator, scheduling

Melissa Charloe - Midfielders, Opposition scouting and film, day-to-day activities, Academics.

CARRY'S FIRST WIN

Kentucky beat Eastern Kentucky 3-1 on Aug. 24 at the Bell Soccer Complex to pick up Ian Carry's first win as an NCAA head coach.

Athletic Director Mitch Barnhart and the team presented him with the match ball after the game was over.

IGNOFFO'S FIRST GOAL

Sophomore forward Foster Ignoffo scored her first goal as a Wildcats vs. ECU 12 minutes into the match to give the Wildcats a 1-0 lead. Ignoffo appeared in every match for UK her freshman season, but never scored.

SAMARZICH'S GAME-WINNERS

Tanya Samarzich scored three goals in two games on UK's home-opening weekend when the Wildcats beat ECU and Wyoming. Two of the three goals were game-winning goals.

SAMARZICH CALLED INTO MEXICAN NATIONAL TEAM CAMP

Tanya Samarzich was called up to participate in the Mexican National Team's camp on Jan. 24 before roster selection to an international friendly exhibition match against world No. 4 Canada on Feb. 4.

She was on the Mexican World Cup roster two years ago, but suffered a devastating ankle injury vs. Canada less than a week before the tournament started in a closed-door scrimmage causing her to miss the World Cup.

SCOUTING THE BULLDOGS

The Georgia Bulldogs enter the last match of the season winless in the SEC, but have perhaps one of the best results of the season in their back pockets with a 1-1 draw at SEC-leading South Carolina on Sunday in Columbia. The Bulldogs got a 90th-minute equalizer and then held off the Gamecocks in the overtime session for the point. The Bulldogs are 0-8-1 in the SEC this season and have four non-conference wins to show for, including a 9-1 win

against Coastal Carolina back in mid-September. Last year, these two sides met on Senior Night in Lexington with UGA taking a 3-1 road victory over the Wildcats back to Athens with them.

SERIES HISTORY VS. GEORGIA

UGA leads the all-time series with Kentucky, 12-7-3. The win by the Bulldogs in 2016 snapped a three-match winning streak for UK over Georgia. The last time UK played in Athens, UK won, 2-0.

H: 4-7-1, A: 3-5-1, N: 0-0-1

Goals: UK 22, UGA 27; ShO: Six

1995 ... Sept. 23 ... Lexington ... W, 2-0

1996 ... Oct. 18 ... Lexington ... L, 1-2

1997 ... Sept. 28 ... Lexington ... W, 4-1

1998 ... Oct. 16 ... at Athens, Ga. ... W, 1-0 (OT)

1999 ... Sept. 26 ... Lexington ... W, 4-1

1999 ... Nov. 4 ... at Nashville* ... T, 1-1 (2OT)

2000 ... Oct. 13 ... at Athens, Ga. ... L, 0-1

2001 ... Oct. 12 ... Lexington ... L, 0-1

2002 ... Oct. 11 ... at Athens, Ga. ... L, 1-5

2003 ... Oct. 24 ... Lexington ... L, 0-1

2004 ... Oct. 15 ... at Athens, Ga. ... L, 0-2

2005 ... Oct. 14 ... Lexington ... T, 0-0 (2OT)

2006 ... Oct. 15 ... at Athens, Ga. ... L, 0-1

2007 ... Oct. 14 ... Lexington ... L, 0-1

2008 ... Oct. 12 ... at Athens, Ga. ... L, 1-3

2009 ... Oct. 2 ... Lexington ... L, 0-1

2010 ... Oct. 1 ... at Athens, Ga. ... T, 1-1

2011 ... Oct. 16 ... Lexington ... L, 1-2

2012 ... Oct. 14 ... at Athens, Ga. ... W, 1-0

2013 ... Sept. 29 ... Lexington ... W, 1-0

2014 ... Oct. 26 ... at Athens, Ga. ... W, 2-0

2016 ... Oct. 27 ... Lexington ... L, 3-1



IAN CARRY FILE



BORN
December 25

EDUCATION
Bell College of Technology
(2001)

HEAD COACHING EXPERIENCE
Kentucky 2016 - Present

HIGHLIGHTS

- Played for the Republic of Ireland
- Been at UK since 2013
- Will continue to be UK's GK coach
- Named head coach Nov. 22, 2016

YEAR-BY-YEAR

KENTUCKY

2017 7-12-0

at UK 7-12-0 (.368)

TOTAL 7-10-0 (.368)

- A native of Dunshauglin, Ireland
- Joined the Kentucky coaching staff in 2013 after a two-year stint with the Central Michigan
- Spent more than 15 years in both professional and college coaching.
- Played on the Irish National Team from 2010-11.
- Club stops with the Shamrock Rovers and Sporting Fingal of the Emerald League.
- Trained top-flight goalkeepers at Celtic FC in the Scottish Premier League as part of the academy, as well as Carlisle United and Dundee FC.
- While with the Republic of Ireland National Team, he worked with the nation's U-15 girls, U-18 boys and U-19 women's senior quads.
- He was responsible for player identification, recruitment, monitoring and evaluation, scheduling and administering of elite training sessions, scheduling of both friendly and competitive matches, video analysis and apparel management.
- Carry helped lead the U-15 girls Irish to the Bob Docherty International Trophy in 2008 and 2010.
- His U-18 boys squad earned the Celtic Cup in 2008 and 2009, as well as the International Centenary Shield in 2008 and 2010.
- National Development Officer for Schools for the Football Association of Ireland from 2007-11
- Coached professionally from 2001-07, including stints as the head coach of West of Scotland's U-13, U-14 and U-15 girls' squads and as the academy goalkeeping coach for the Celtic FC of the Scottish Premier League.
- A graduate of the Bell College of Technology in Hamilton, Scotland, Carry graduated in 2001 with honors with a bachelor's of arts degree in leisure management.
- The contract for Carry is a two-year agreement with a school option for two additional years.



Ian Carry's introductory press conference; Vickie Bell, Stephanie Carry, Ian Carry, Wendell Bell

Ian Carry's Career

Playing Career	Team or Club	League/Position
1993-95	Longford Town FC	League of Ireland Premier Division Club
1995-98	Home Farm FC	League of Ireland First Division Club
2000-01	Queens Park FC	Scottish Second Division Club
2009-10	Sporting Fingal	Emerald League
2010-11	Shamrock Rovers	Emerald League
2010-11	Republic of Ireland	International
Coaching Career		
2000-04	Scottish Football Association	Community Coach
2001-02	St. Mirrens Boy's Club	GK Coach
2001-04	KC Kilmarnock Women's Club	Assistant Manager/GK Coach
2001-04	West of Scotland Girls	Head Coach (U-13, U-14, U-15)
2001-04	West of Scotland Boys	GK Coach (U-13, U-14, U-15)
2004-06	Celtic FC – Scottish Premier	Academy Goalkeepers Coach
2005-06	Carlisle United FC First Team	Goalkeepers Coach
2006-07	Dundee United FC Pro Youth	Goalkeepers Coach
2006-07	SFA Regional Women's Squad	Goalkeepers Coach
2007-11	Republic of Ireland	GK Coach (U-15G, U-18B, U-19W)
2011-12	Central Michigan University	Assistant Coach
2013-16	University of Kentucky	Assistant Coach
2016-Present	University of Kentucky	Head Coach



KENTUCKY TACTICAL LINE-UP (3-4-3)

18 BABO

- USWNT U-18 pool
- 2 goals vs. LSU
- 2 career 2-goal games
- Assist on GWG vs. Miss St

2 IGNOFFO

- First-career goal vs. EKU
- Assist on GWG @ Miss St.
- 2 assists vs. LSU
- Speedy, good server

21 MITCHELL

- Scored 3 goals
- Leading point/goal-scorer
- Gatorade KY HS PoY
- 2 assists (one off tm lead)

6 JIMENEZ

- Extremely fast/good pace
- Started 15 in a row
- Goal vs. UL / Ast vs. LSU
- Scored GWG @ Miss. St.

17 KEEN

- 2017 minutes leader
- Takes all CK and long sets
- Goal vs. Ohio from 27 yd
- 2 assists

15 CROSETTI

- 3rd-career goal vs. LSU
- Assist vs. EKU
- Most miles ran of any UK player this season (data)

4 OLDING

- Returned from England Nat'l camp on Oct. 25
- Captain
- Good in the air

12 NOVAK

- One of three seniors
- Started career as a MF
- Played most minutes of active UK player (career)

25 ATKINS

- Scored vs. Lipscomb
- Missed Tennessee match w/ shoulder injury
- Started two games in '16

22 HAYDEN

- First start of year at Ohio
- Speedy and athletic
- Indianapolis, Ind., native
- Started last 7 matches

24 ZOELLER

- Normally a Midfielder
- Never played GK before
- Allowed 2 goals vs. UF
- True Freshman



#25 PAYTON ATKINS // D // Junior

Cincinnati, Ohio (Turpin HS)

After third shoulder surgery and full recovery and rehab sessions in offseason, injured shoulder in second day of preseason participation of 2016 ... Is now finally healthy for 2017 season ... Scored first goal of the season off a long-range set header vs. Lipscomb ... Missed the Tennessee match after a left shoulder setback against Lipscomb on Sept. 15 ... Very technically gifted for a CB ... Will advance forward on corner kicks and long-range sets ... Sat out the Western Illinois match with general body soreness and fatigue ... Shoulder was re-injured vs. Loyola-Chicago and did not return in that match.

	GP/GS	MIN	G	A	PTS	GWG
2017 Season Statistics:	16/15	1,,218	1	0	2	1
Career Statistics:	48/21	2,235	2	0	4	1



#18 SOPHIE BABO // F // Junior

Maple Grove, Minnesota (Orono HS)

Can play on the offensive line, defensive line and is also the back-up GK for UK ... After a rib injury to Soucie, had to play GK for the second half at #8 Florida State - it was the first time she had ever played GK in her soccer career ... Part of the USWNT U-18 pool as a forward ... Started nine of the last 10 matches as a target forward or a centerback ... Scored twice vs. LSU (UK's second and third goals) ... Was her second-career multi-goal match (Tennessee, 2016) ... Assisted on the game-winning goal at Mississippi State ... Had to start as the GK vs. Loyola-Chicago with Evangeline Soucie's concussion.

	GP/GS	MIN	G	A	PTS	GWG
2017 Season Statistics:	16/9	870	2	1	5	0
Career Statistics:	49/18	2,091	6	5	17	0



TOUGHNESS. HARD WORK. ACCOUNTABILITY.

2017 KENTUCKY WOMEN'S SOCCER



#8 TATE BARNEY // M // Sophomore

Plainfield, Illinois (Plainfield HS)

Tore her ACL in the spring of 2015 and took a redshirt in 2016 rehabbing from that injury ... Is now back to full health and saw her first action vs. ECU on Aug. 24 in a 3-1 win ... Has played in the ECU, Ohio, SC, Auburn and LSU matches, with 19 total minutes ... All five appearances have been as a sub.

	GP/GS	MIN	G	A	PTS	GWG
2017 Season Statistics:	5/0	19	0	0	0	0
Career Statistics:	5/0	19	0	0	0	0



#9 MARISSA BOSCO // F // Sophomore

St. Charles, Illinois (St. Charles North HS)

Tore her MCL in the spring training with her club team ... Voted a team captain ... After the surgery and consulting with doctors - will miss the entire 2017 season with the injury and doing rehab ... Was a 2016 All-SEC Freshman Team selection and was projected to be in the Starting XI ... Part of the USWNT U-18 and U-20 pools ... Team stopped at her house (neighbors to teammate Foster Ignoffo) as a surprise to her on the way up to Wisconsin in the season opener - got to see and eat dinner with her family.

	GP/GS	MIN	G	A	PTS	GWG
2017 Season Statistics:	Will not play with an injury					
Career Statistics:	18/17	1,381	3	5	11	0



#15 GINA CROSETTI // M // Sophomore

Oakland, California (Miramonte HS)

Was the last one standing as UK's fitness test on the first day of preseason ... Is extremely technical and coming off her freshman season where she started all but one match (season opener) ... Will play an extremely holding and defensive midfield slot, but can get forward when space allows ... Scored two goals last season in addition to a pair of assists ... Scored her first goal of the 2017 season vs. LSU, turned out to be the GWG ... Has ran the most miles per the Catapult Data Tracking statem of any player on the team ... A workhorse in midfield.

	GP/GS	MIN	G	A	PTS	GWG
2017 Season Statistics:	19/19	1,633	1	1	3	1
Career Statistics:	37/36	3,103	3	3	9	1



#5 TAYA EDWARDS // D // Freshman

Jacksonville, Florida (The Bolles School)

Daughter of Marc Edwards (NFL player with SF, CLE, NE, JAX, CHI and won Super Bowl XXXVI with the Patriots) ... Got her first-career start against Western Illinois at centerback ... Earned first-career SEC start vs. Tennessee in place of the injured Payton Atkins and played all 90 minutes, a new career-high ... Played over 50 minutes in the win at Ohio ... Strong leg on long-range set pieces ... Can also play out wide and as a holding mid when needed ... Tallied her first-career point against Ohio on Sept. 10 with an assist on Eva Mitchell's goal ... Injured ankle vs. Auburn, and then because of it missed the LSU match ... Returned vs. Miss. St in limited role.

	GP/GS	MIN	G	A	PTS	GWG
2017 Season Statistics:	16/6	682	0	1	1	0
Career Statistics:	16/6	682	0	1	1	0



#11 JULIA GROSSO // F/M // Freshman

Sunrise, Florida (St. Thomas HS)

Appeared in all 19 games this season ... Earned her first-career start vs. Loyola-Chicago on Sunday ... Scored her first-career goal in the second half vs. Lipscomb on Sept. 15 less than a minute after being subbed in - it was her first touch of the ball in the half ... Can play both an advanced midfield role, or up top as a target forward and a wide attacker as well ... Has launched seven shots this season with four of those on goal.

	GP/GS	MIN	G	A	PTS	GWG
2017 Season Statistics:	19/1	453	1	0	2	0
Career Statistics:	19/1	453	1	0	2	0



#22 DANIELLE HAYDEN // D // Soph.

Indianapolis, Indiana (Pike HS)

Fast, athletic wingback that will typically play along the right side and flip with Sophie Stewart-Hobbs ... Has started the last seven matches in a row as a wideback on the left side ... Good with the ball at her feet and can play balls over the top to wide forwards ... Had an assist last year against High Point for her first, and only career point thus far ... Got her first start of the season on Sept. 10 at Ohio in UK's 3-0 win over the Bobcats ... Started match vs. LSU and played all 90 minutes of a match for the first time in her career as a Wildcat.

	GP/GS	MIN	G	A	PTS	GWG
2017 Season Statistics:	19/8	1,093	0	0	0	0
Career Statistics:	35/19	2,032	0	1	1	0



#3 JADA HOLMES // D // Sophomore

McKinney, Texas (McKinney HS)

Tore her ACL in the spring and will miss the entire season.

	GP/GS	MIN	G	A	PTS	GWG
2017 Season Statistics:	Will not play with an injury					
Career Statistics:	3/0	12	0	0	0	0



#13 JORDAN HOLT // D // Sophomore

Granite Bay, California (Granite Bay HS)

Has not played this season.

	GP/GS	MIN	G	A	PTS	GWG
2017 Season Statistics:	0/0	0	0	0	0	0
Career Statistics:	3/0	24	0	0	0	0



#2 FOSTER IGNOFFO // F // Sophomore

Geneva, Illinois (Geneva HS)

Scored her first-career goal in 25 matches in the Blue and White in UK's home opener against Eastern Kentucky ... Has started in all 18 matches for UK that she has been eligible for ... Speedy forward who likes to get endline and serve the box ... Team stopped in Chicago as a surprise to her on the way up to Wisconsin in the season opener - got to see and eat dinner with her family ... Assisted on the second and third goals in UK's 3-0 win over LSU on Sept. 29 ... Assisted on the game-winning goal vs. Mississippi State ... Sat out the Mizzou match after a double-yellow red card vs. Miss St. in the prior match ... Scored vs. LU-C.

	GP/GS	MIN	G	A	PTS	GWG
2017 Season Statistics:	18/18	1,351	2	3	7	0
Career Statistics:	34/21	2,050	2	4	8	0



#6 MIRANDA JIMENEZ // F // Freshman

Tulare, California (Mission Oak HS)

Fast, athletic forward/midfielder that can be deadly with her speed tracking towards goal ... Scored her first-career goal in UK's rivalry match with Louisville ... Loves to use her speed out wide ... Started the last 15 matches in a row as a replacement starter up top for Tanya Samarzich (ACL tear) ... Big Pittsburgh Steelers fan ... Assisted on UK's first and third goals vs. LSU ... Scored the game-winning goal at Mississippi State - her first-career GWG ... Scored vs. Mizzou to level the match at 1-1 ... Leading point-scorer for UK.

	GP/GS	MIN	G	A	PTS	GWG
2017 Season Statistics:	19/15	1,380	3	3	9	1
Career Statistics:	19/15	1,380	3	3	9	1



TOUGHNESS. HARD WORK. ACCOUNTABILITY.

2017 KENTUCKY WOMEN'S SOCCER



#17 KATY KEEN // M // Senior

Zionsville, Indiana (Penn State University)

Transferred in from Penn State after her freshman season ... Will take all of UK's corner kicks and long-range set pieces ... Can play long-range balls in on a dime and change the point as quick as anyone in college soccer ... Scored her first goal of the season at Ohio on Sept. 10 ... Can play both a holding or attacking role, but not overly athletic, so mostly will play the holding role ... Has 80 shots in her career and six goals with six assists ... Has started in 53 of the 56 games she has played in at Kentucky ... Active minutes leader for UK this season (1,710).

	GP/GS	MIN	G	A	PTS	GWG
2017 Season Statistics:	19/18	1,637	1	3	5	0
Career Statistics:	56/53	4,710	6	7	19	2



#10 YUUKA KUROSAKI // M // Freshman

Fukouka, Japan (Fukieda Junsu HS)

Assisted on the game-winning goal vs. Wyoming in double overtime in the second week of the season ... Can play both the sitting and attacking role ... Recruited by Jason Goodson ... Sprained MCL vs. Florida State, played vs. USC in return back to field ... Has represented her home nation of Japan on a national level numerous times, including the 2013 Four-Nations Tournament in Costa Rica. Kurosaki helped lift the U-17 Japanese over the U-17 United States Women's National Team in preparation for the U-17 World Cup ... Her coach on the U-17 Japanese national team, Asako Takakura, is now the current full-team coach for the Japanese team ... Scored off a set piece from Katy Keen for her second goal of the season ... MCL sprain has kept her out of seven matches this season.

	GP/GS	MIN	G	A	PTS	GWG
2017 Season Statistics:	12/10	832	2	1	5	0
Career Statistics:	12/10	832	2	1	5	0



#20 JESSICA LAZO // F // Freshman

Long Beach, California (Palos Verdes HS)

Scored her first-career goal at Ohio - which proved to be the game-winning goal in just her fourth match of her career ... Has a powerful leg and will shoot from long range ... Missed the last seven matches with a significant ankle injury ... No timetable is set for her return.

	GP/GS	MIN	G	A	PTS	GWG
2017 Season Statistics:	8/3	290	1	0	2	1
Career Statistics:	8/3	290	1	0	2	1



#21 EVA MITCHELL // F // Freshman

Nicholasville, Kentucky (West Jessamine HS)

Leading point-scorer and goal-scorer for UK this season until the Mizzou match. ... Game-winning goal vs. Western Illinois off a long-range set from Katy Keen ... One of three players to start in all 17 matches this season (Crosetti, Novak) ... Also scored vs. Eastern Kentucky and the first goal of the Ian Carry era to equalize vs. Marquette on opening weekend in Milwaukee ... 2016-17 Gatorade High School Soccer Player of the Year in the state of Kentucky ... Went to the same HS as UK All-American and current Chicago Red Star, Arin Gilliland ... Enrolled early in the spring to be able to get ahead in school and train with the team all throughout the spring.

	GP/GS	MIN	G	A	PTS	GWG
2017 Season Statistics:	19/19	1,500	3	2	8	1
Career Statistics:	19/19	1,500	3	2	8	1



#19 CAROLINE NEWLAND // D // Freshman

Henderson, Kentucky (Reitz Memorial HS)

Has appeared in seven matches this season, including significant minutes vs. Eastern Kentucky.

	GP/GS	MIN	G	A	PTS	GWG
2017 Season Statistics:	8/0	52	0	0	0	0
Career Statistics:	8/0	52	0	0	0	0



#12 KELLY NOVAK // D // Senior

Strongsville, Ohio (Strongsville HS)

Has played the most career minutes of any active player at Kentucky ... Started 71 of 77 career matches, including the last 54 in a row ... Starts as a wideback, and can get forward very easily ... Great marking on set pieces and a leader on the field and off the field ... Dieheart Cleveland Cavaliers fan and huge fan of Cleveland sports in general ... Has two shots on goal this season, both coming from corner kicks where she was advanced forward into the attack ... Was the lone player on the 2014 NCAA Sweet 16 team that is still remaining on this active team (Keen/Samarzich are transfers).

	GP/GS	MIN	G	A	PTS	GWG
2017 Season Statistics:	19/19	1,562	0	0	0	0
Career Statistics:	77/71	6,025	1	2	4	0



#4 HOLLIE OLDING // M // Freshman

Chichester, England (Chelsea FC / Brighton and Hove Albion FC)

Called into England National Team camp and will be back in England from Sept. 9-16 missing the Ohio, Lipscomb and Tennessee matches before returning to American soil ... Will return to the Lionesses for EURO qualifications in late October, missing three matches (Loyola-Chicago, Florida, Arkansas) ... Voted a team captain as a freshman ... Played for the Lionesses at the U-20 World Cup in Jordan and also played in the group stage matches, semifinals, and third-place game of the European Championships for England in 2016. In the qualification stage, Olding scored a goal for the Lionesses – on March 10, 2015 against Estonia ... Has 10 shots with three on goal this season.

	GP/GS	MIN	G	A	PTS	GWG
2017 Season Statistics:	13/12	1,001	0	0	0	0
Career Statistics:	13/12	1,001	0	0	0	0



#23 TANYA SAMARZICH // F // Senior

Upland, California (University of Southern California)

Transferred in from USC after her freshman season ... Was on the Mexico World Cup roster in 2015, but suffered a brutal broken ankle in a closed-door scrimmage vs. Canada the week before the World Cup started ... UK's leading goal scorer at the time of her ACL tear vs. Florida State (9/3/17) ... Will be able to redshirt, as she missed the cutoff by 47 minutes ... Will be eligible for the 2018 season, and plans to come back ... UK's active leading goal-scorer, assister, and point-getter.

	GP/GS	MIN	G	A	PTS	GWG
2017 Season Statistics:	6/6	513	3	1	7	2
Career Statistics:	39/28	2,722	13	8	34	4



#33 EVANGELINE SOUCIE // GK // Soph.

Milford, New Jersey (Deleware Valley HS)

SEC Defensive Player of the Week (10/2/17) ... In concussion protocol and is a game-time decision ... Has missed the last three matches with the concussion suffered vs. Mizzou ... Kentucky's only goalkeeper on the roster this year ... 2016 SEC All-Freshman Team ... Voted a team captain ... Has a 1.42 career GAA, and a 1.28 this season, a career-low mark ... Has five-career shutouts, including four this season ... Was a member of the 2016 All-SEC Freshman Team ... U-16 and U-18 USWNT player ... Known for her shot-stopping and saves that require athleticism.

	GP/GS	MIN	GA	Save %	Saves	Record
2017 Season Statistics:	16/16	1,405:27	20	.730	54	7-9-0
Career Statistics:	32/32	2,938:03	47	.728	126	11-16-4



#27 SOPHIE STEWART-HOBBS // D // Fr.

Tauranga, New Zealand (Saint Kentigern HS)

Played for the New Zealand national team at both the U-17 and U-20 FIFA Women's World Cups ... Played in all three matches for New Zealand in their run at the U-20 FIFA Women's World Cup in Papa New Guinea – in addition to appearing in two matches for the country at the 2014 U-17 FIFA Women's World Cup in Costa Rica ... Played in and started in first 10 matches of the season.

	GP/GS	MIN	G	A	PTS	GWG
2017 Season Statistics:	18/10	636	0	0	0	0
Career Statistics:	18/10	636	0	0	0	0



#14 LaMAYA WILLIAMS // M // Sophomore

Gilbert, Arizona (Chandler HS)

Broke her ankle in training during the spring and is still not 100%, but has been cleared to play a set amount of minutes ... Extremely fast player along the wings and can play wide, central, midfield and forward.

	GP/GS	MIN	G	A	PTS	GWG
2017 Season Statistics:	13/0	222	0	0	0	0
Career Statistics:	30/7	770	0	0	0	0



#24 ABIGAIL ZOELLER // F/M // Freshman

Independence, Kentucky (Simon Kenton HS)

Enrolled early in the spring to be able to get ahead in school and train with the team all throughout the spring ... Has started four matches for UK and put herself in dangerous positions to score goals ... Has nine shots with three on goal ... Finished the Loyola-Chicago match as the goalkeeper ... Has played GK the last two matches after never playing GK in her career before this.

	GP/GS	MIN	G	A	PTS	GWG
2017 Season Statistics:	16/4	569	0	0	0	0
Career Statistics:	16/4	569	0	0	0	0



TOUGHNESS. HARD WORK. ACCOUNTABILITY.
2017 **KENTUCKY** WOMEN'S SOCCER



Who's on the sidelines?



Ian Carry
Head Coach



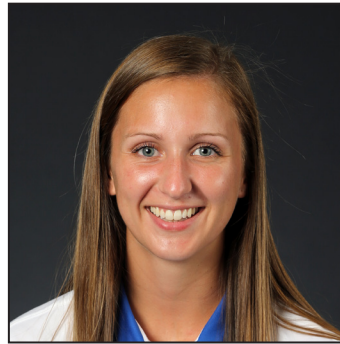
Melissa Charloe
Assistant Coach



Jason Goodson
Assistant Coach
Recruiting Coordinator



Hailey Rockwood
Athletic Trainer



Emily Kruithof
Athletic Trainer



Chris Shoals
SID



Stephanie Simmons
Sport Administrator





2017 Kentucky Women's Soccer
 Kentucky Combined Team Statistics (as of Oct 22, 2017)
 All games



RECORD:	OVERALL	HOME	AWAY	NEUTRAL
ALL GAMES	7-12	5-6	2-5	0-1
CONFERENCE	2-7	1-4	1-2	0-1
NON-CONFERENCE	5-5	4-2	1-3	0-0

Date	Opponent	Score	Att.	#	Player	gp	g	a	pts	sh	sh%	sog	sog%	gw	pk-att
Aug 18	at Wisconsin	L 0-1	605	6	Jimenez, Miranda	19	3	3	9	28	.107	14	.500	1	0-0
Aug 20	at Marquette	L 1-2	310	21	Mitchell, Eva	19	3	2	8	16	.188	7	.438	1	0-0
Aug 23	EASTERN KENTUCKY	w 3-1	1055	23	Samarzich, Tanya	6	3	1	7	14	.214	5	.357	2	0-0
Aug 27	WYOMING	wo2 2-1	1257	2	Ignoffo, Foster	18	2	3	7	21	.095	4	.190	0	0-0
Sep 01	LOUISVILLE	L 1-3	1381	18	Babo, Sophie	16	2	1	5	25	.080	10	.400	0	0-1
Sep 03	at #8 Florida State	L 0-4	1162	10	Kurosaki, Yuuka	12	2	1	5	9	.222	3	.333	0	1-1
Sep 08	WESTERN ILLINOIS	w 1-0	933	17	Keen, Katy	19	1	3	5	24	.042	4	.167	0	0-0
Sep 10	at Ohio	w 3-0	517	15	Crosetti, Gina	19	1	1	3	14	.071	4	.286	1	0-0
Sep 15	LIPSCOMB	w 2-0	1328	25	Atkins, Payton	16	1	0	2	13	.077	8	.615	1	0-0
* Sep 17	at Tennessee	L 0-3	1453	20	Lazo, Jessica	8	1	0	2	8	.125	3	.375	1	0-0
* Sep 21	#3 SOUTH CAROLINA	L 0-1	1173	11	Grosso, Julia	19	1	0	2	7	.143	4	.571	0	0-0
* Sep 24	at Auburn	L 0-3	334	5	Edwards, Taya	16	0	1	1	1	.000	0	.000	0	0-0
* Sep 29	LSU	w 3-0	1533	4	Olding, Hollie	13	0	0	0	12	.000	4	.333	0	0-0
* Oct 05	VANDERBILT	L 0-2	1486	24	Zoeller, Abigail	16	0	0	0	9	.000	3	.333	0	0-0
* Oct 08	at Mississippi State	w 1-0	525	12	Novak, Kelly	19	0	0	0	4	.000	2	.500	0	0-0
* Oct 12	MISSOURI	L 1-2	1112	14	Williams, LaMaya	13	0	0	0	3	.000	0	.000	0	0-0
Oct 15	LOYOLA-CHICAGO	L 2-5	1190	22	Hayden, Danielle	19	0	0	0	1	.000	0	.000	0	0-0
* Oct 19	vs #20 Florida	L 0-2	352	33	Soucie, Evangeline	16	0	0	0	0	.000	0	.000	0	0-0
* Oct 22	ARKANSAS	L 0-2	1114	27	Stewart-Hobbs, Sophie	18	0	0	0	0	.000	0	.000	0	0-0
				19	Newland, Caroline	8	0	0	0	0	.000	0	.000	0	0-0

TEAM STATISTICS	UK	OPP
SHOT STATISTICS		
Goals-Shot attempts	20-209	32-241
Goals scored per game	1.05	1.68
Shot pct.	.096	.133
Shots on goal-Attempts	75-209	110-241
SOG pct.	.359	.456
Shots/Game	11.0	12.7
CORNER KICKS	100	82
PENALTY KICKS	1-2	0-1
OFFSIDES	28	39
PENALTIES		
Fouls	157	178
Yellow cards	18	17
Red cards	1	0
ATTENDANCE		
Total	13562	4906
Dates/Avg Per Date	11/1233	7/701
Neutral Site #/Avg	1/352	

#	Player	gp	g	a	pts	sh	sh%	sog	sog%	gw	pk-att
8	Barney, Tate	5	0	0	0	0	.000	0	.000	0	0-0
Total		19	20	16	56	209	.096	75	.359	7	1-2
	Opponents	19	32	28	92	241	.133	110	.456	12	0-1

#	Goalie	GP	Min.	GA	GAAvg	Saves	Pct	W-L-T	Sho
33	Soucie, Evangeline	16	1405:27	20	1.28	54	.730	7-9-0	5/0
24	Zoeller, Abigail	3	231:28	6	2.33	11	.647	0-2-0	0/0
18	Babo, Sophie	3	85:19	6	6.33	8	.571	0-1-0	0/0
Total		19	1722:14	32	1.67	78	.709	7-12-0	5
Opponents		19	1722:14	20	1.05	55	.733	12-7-0	8

Goals by Period	1st	2nd	OT	OT2	Total
Kentucky	5	14	0	1	20
Opponents	17	15	0	0	32

Shots by Period	1st	2nd	OT	OT2	Total
Kentucky	90	113	5	1	209
Opponents	107	133	1	0	241

Saves by Period	1st	2nd	OT	OT2	Total
Kentucky	34	43	1	0	78
Opponents	23	31	1	0	55

Corners by Period	1st	2nd	OT	OT2	Total
Kentucky	50	49	1	0	100
Opponents	33	49	0	0	82

Fouls by Period	1st	2nd	OT	OT2	Total
Kentucky	65	92	0	0	157
Opponents	93	84	1	0	178



2017 Kentucky Women's Soccer
 Kentucky Overall Individual Statistics (as of Oct 23, 2017)
 All games



Overall: 7-12-0 Conf: 2-7-0 Home: 5-6-0 Away: 2-5-0 Neut: 0-1-0

##	Player	gp-gs	min	g	a	pts	sh	sh%	sog	sog%	yc	rc	gwg	pk-att	foul
6	Jimenez, Miranda	19-15	1380	3	3	9	28	.107	14	.500	0	0	1	0-0	0
21	Mitchell, Eva	19-19	1500	3	2	8	16	.188	7	.438	0	0	1	0-0	0
23	Samarzich, Tanya	6-6	513	3	1	7	14	.214	5	.357	0	0	2	0-0	0
2	Ignoffo, Foster	18-18	1351	2	3	7	21	.095	4	.190	4	1	0	0-0	0
18	Babo, Sophie	16-10	870	2	1	5	25	.080	10	.400	1	0	0	0-1	0
10	Kurosaki, Yuuka	12-10	832	2	1	5	9	.222	3	.333	1	0	0	1-1	0
17	Keen, Katy	19-18	1637	1	3	5	24	.042	4	.167	0	0	0	0-0	0
15	Crosetti, Gina	19-19	1633	1	1	3	14	.071	4	.286	1	0	1	0-0	0
25	Atkins, Payton	16-15	1218	1	0	2	13	.077	8	.615	0	0	1	0-0	0
20	Lazo, Jessica	8-3	290	1	0	2	8	.125	3	.375	0	0	1	0-0	0
11	Grosso, Julia	19-1	453	1	0	2	7	.143	4	.571	0	0	0	0-0	0
5	Edwards, Taya	16-6	682	0	1	1	1	.000	0	.000	2	0	0	0-0	0
4	Olding, Hollie	13-12	1001	0	0	0	12	.000	4	.333	2	0	0	0-0	0
24	Zoeller, Abigail	16-5	569	0	0	0	9	.000	3	.333	0	0	0	0-0	0
12	Novak, Kelly	19-19	1562	0	0	0	4	.000	2	.500	2	0	0	0-0	0
14	Williams, LaMaya	13-0	222	0	0	0	3	.000	0	.000	1	0	0	0-0	0
22	Hayden, Danielle	19-8	1093	0	0	0	1	.000	0	.000	0	0	0	0-0	0
33	Soucie, Evangeline	16-1	1405	0	0	0	0	.000	0	.000	0	0	0	0-0	0
27	Stewart-Hobbs, Sophie	18-10	636	0	0	0	0	.000	0	.000	1	0	0	0-0	0
19	Newland, Caroline	8-0	52	0	0	0	0	.000	0	.000	1	0	0	0-0	0
8	Barney, Tate	5-0	19	0	0	0	0	.000	0	.000	0	0	0	0-0	0
Total		19	-	20	16	56	209	.096	75	.359	18	1	7	1-2	157
Opponents		19	-	32	28	92	241	.133	110	.456	17	0	12	0-1	178

#	Goalie	gp-gs	Goal Average			Saves		Record			
			min	ga	gaavg	saves	pct	w	l	t	sho/cbo
33	Soucie, Evangeline	16-16	1405:27	20	1.28	54	.730	7	9	0	5/0
24	Zoeller, Abigail	3-2	231:28	6	2.33	11	.647	0	2	0	0/0
18	Babo, Sophie	3-1	85:19	6	6.33	8	.571	0	1	0	0/0
TM	TEAM	-	0:00	0	0.00	5	1.000	0	0	0	0/0
Total		19	1722:14	32	1.67	78	.709	7	12	0	5
Opponents		19	1722:14	20	1.05	55	.733	12	7	0	8

Team saves: 5

Goals by Period	1st	2nd	OT	OT2	Total
Kentucky	5	14	0	1	20
Opponents	17	15	0	0	32

Corners by Period	1st	2nd	OT	OT2	Total
Kentucky	50	49	1	0	100
Opponents	33	49	0	0	82

Shots by Period	1st	2nd	OT	OT2	Total
Kentucky	90	113	5	1	209
Opponents	107	133	1	0	241

Fouls by Period	1st	2nd	OT	OT2	Total
Kentucky	65	92	0	0	157
Opponents	93	84	1	0	178

Saves by Period	1st	2nd	OT	OT2	Total
Kentucky	34	43	1	0	78
Opponents	23	31	1	0	55

Attendance Summary	UK	Opponent
Total	13562	4906
Dates/Avg Per Date	11/1233	7/701
Neutral Site #/Avg	1/352	



Kentucky Women's Soccer
Individual Career History



Atkins, Payton

Season	GP-GS	Min.	G	A	Pts	Shot	Shot%	SOG	SOG%	GW	PK-Att
2015	18-4	714	1	0	2	4	.250	3	.750	0	0-0
2016	14-2	303	0	0	0	3	.000	1	.333	0	0-0
2017	16-15	1218	1	0	2	13	.077	8	.615	1	0-0
TOTAL	48-21	2235	2	0	4	20	.100	12	.600	1	0-0

Babo, Sophie

Season	GP-GS	Min.	G	A	Pts	Shot	Shot%	SOG	SOG%	GW	PK-Att
2015	16-2	476	2	2	6	16	.125	9	.562	0	0-0
2016	17-7	745	2	2	6	7	.286	4	.571	0	1-2
2017	16-9	870	2	1	5	25	.080	10	.400	0	0-1
TOTAL	49-18	2091	6	5	17	48	.125	23	.479	0	1-3

Season	GP-GS	Minutes	GA	GAAvg	Saves	Save%	W	L	T	Sho
2017	3-1	85:19	6	6.33	8	.571	0	1	0	0
TOTAL	3-1	85:19	6	6.33	8	.571	0	1	0	0

Barney, Tate

Season	GP-GS	Min.	G	A	Pts	Shot	Shot%	SOG	SOG%	GW	PK-Att
2017	5-0	19	0	0	0	0	.000	0	.000	0	0-0
TOTAL	5-0	19	0	0	0	0	.000	0	.000	0	0-0

Bosco, Marissa

Season	GP-GS	Min.	G	A	Pts	Shot	Shot%	SOG	SOG%	GW	PK-Att
2016	18-17	1381	3	5	11	31	.097	14	.452	0	0-0
TOTAL	18-17	1381	3	5	11	31	.097	14	.452	0	0-0

Crosetti, Gina

Season	GP-GS	Min.	G	A	Pts	Shot	Shot%	SOG	SOG%	GW	PK-Att
2016	18-17	1470	2	2	6	11	.182	5	.455	0	0-0
2017	19-19	1633	1	1	3	14	.071	4	.286	1	0-0
TOTAL	37-36	3103	3	3	9	25	.120	9	.360	1	0-0

Edwards, Taya

Season	GP-GS	Min.	G	A	Pts	Shot	Shot%	SOG	SOG%	GW	PK-Att
2017	16-6	682	0	1	1	1	.000	0	.000	0	0-0
TOTAL	16-6	682	0	1	1	1	.000	0	.000	0	0-0

Grosso, Julia

Season	GP-GS	Min.	G	A	Pts	Shot	Shot%	SOG	SOG%	GW	PK-Att
2017	19-1	453	1	0	2	7	.143	4	.571	0	0-0
TOTAL	19-1	453	1	0	2	7	.143	4	.571	0	0-0



Kentucky Women's Soccer
Individual Career History



Hayden, Danielle

Season	GP-GS	Min.	G	A	Pts	Shot	Shot%	SOG	SOG%	GW	PK-Att
2016	16-11	939	0	1	1	3	.000	2	.667	0	0-0
2017	19-8	1093	0	0	0	1	.000	0	.000	0	0-0
TOTAL	35-19	2032	0	1	1	4	.000	2	.500	0	0-0

Holmes, Jada

Season	GP-GS	Min.	G	A	Pts	Shot	Shot%	SOG	SOG%	GW	PK-Att
2016	3-0	12	0	0	0	0	.000	0	.000	0	0-0
TOTAL	3-0	12	0	0	0	0	.000	0	.000	0	0-0

Holt, Jordan

Season	GP-GS	Min.	G	A	Pts	Shot	Shot%	SOG	SOG%	GW	PK-Att
2016	3-0	24	0	0	0	0	.000	0	.000	0	0-0
TOTAL	3-0	24	0	0	0	0	.000	0	.000	0	0-0

Ignoffo, Foster

Season	GP-GS	Min.	G	A	Pts	Shot	Shot%	SOG	SOG%	GW	PK-Att
2016	17-3	699	0	1	1	6	.000	2	.333	0	0-0
2017	18-18	1351	2	3	7	21	.095	4	.190	0	0-0
TOTAL	35-21	2050	2	4	8	27	.074	6	.222	0	0-0

Jimenez, Miranda

Season	GP-GS	Min.	G	A	Pts	Shot	Shot%	SOG	SOG%	GW	PK-Att
2017	19-15	1380	3	3	9	28	.107	14	.500	1	0-0
TOTAL	19-15	1380	3	3	9	28	.107	14	.500	1	0-0

Keen, Katy

Season	GP-GS	Min.	G	A	Pts	Shot	Shot%	SOG	SOG%	GW	PK-Att
2015	19-19	1594	3	2	8	28	.107	12	.429	2	0-0
2016	18-16	1479	2	2	6	29	.069	8	.276	0	1-1
2017	19-18	1637	1	3	5	24	.042	4	.167	0	0-0
TOTAL	56-53	4710	6	7	19	81	.074	24	.296	2	1-1

Kurosaki, Yuuka

Season	GP-GS	Min.	G	A	Pts	Shot	Shot%	SOG	SOG%	GW	PK-Att
2017	12-10	832	2	1	5	9	.222	3	.333	0	1-1
TOTAL	12-10	832	2	1	5	9	.222	3	.333	0	1-1

Lazo, Jessica

Season	GP-GS	Min.	G	A	Pts	Shot	Shot%	SOG	SOG%	GW	PK-Att
2017	8-3	290	1	0	2	8	.125	3	.375	1	0-0
TOTAL	8-3	290	1	0	2	8	.125	3	.375	1	0-0



Kentucky Women's Soccer
Individual Career History



Mitchell, Eva

Season	GP-GS	Min.	G	A	Pts	Shot	Shot%	SOG	SOG%	GW	PK-Att
2017	19-19	1500	3	2	8	16	.188	7	.438	1	0-0
TOTAL	19-19	1500	3	2	8	16	.188	7	.438	1	0-0

Newland, Caroline

Season	GP-GS	Min.	G	A	Pts	Shot	Shot%	SOG	SOG%	GW	PK-Att
2017	8-0	52	0	0	0	0	.000	0	.000	0	0-0
TOTAL	8-0	52	0	0	0	0	.000	0	.000	0	0-0

Novak, Kelly

Season	GP-GS	Min.	G	A	Pts	Shot	Shot%	SOG	SOG%	GW	PK-Att
2014	20-15	1203	0	0	0	5	.000	3	.600	0	0-0
2015	20-20	1637	1	0	2	3	.333	1	.333	0	0-0
2016	18-17	1623	0	2	2	5	.000	1	.200	0	0-0
2017	19-19	1562	0	0	0	4	.000	2	.500	0	0-0
TOTAL	77-71	6025	1	2	4	17	.059	7	.412	0	0-0

Olding, Hollie

Season	GP-GS	Min.	G	A	Pts	Shot	Shot%	SOG	SOG%	GW	PK-Att
2017	13-12	1001	0	0	0	12	.000	4	.333	0	0-0
TOTAL	13-12	1001	0	0	0	12	.000	4	.333	0	0-0

Samarzich, Tanya

Season	GP-GS	Min.	G	A	Pts	Shot	Shot%	SOG	SOG%	GW	PK-Att
2015	15-6	836	3	1	7	22	.136	10	.455	0	0-1
2016	18-16	1373	7	6	20	33	.212	21	.636	2	0-0
2017	6-6	513	3	1	7	14	.214	5	.357	2	0-0
TOTAL	39-28	2722	13	8	34	69	.188	36	.522	4	0-1

Soucie, Evangeline

Season	GP-GS	Min.	G	A	Pts	Shot	Shot%	SOG	SOG%	GW	PK-Att
2016	16-0	1533	0	0	0	0	.000	0	.000	0	0-0
2017	16-1	1405	0	0	0	0	.000	0	.000	0	0-0
TOTAL	32-1	2938	0	0	0	0	.000	0	.000	0	0-0

Season	GP-GS	Minutes	GA	GAAvg	Saves	Save%	W	L	T	Sho
2016	16-16	1532:36	27	1.59	72	.727	4	7	4	1.1
2017	16-16	1405:27	20	1.28	54	.730	7	9	0	5
TOTAL	32-32	2938:03	47	1.44	126	.728	11	16	4	6.1

Stewart-Hobbs, Sophie

Season	GP-GS	Min.	G	A	Pts	Shot	Shot%	SOG	SOG%	GW	PK-Att
2017	18-10	636	0	0	0	0	.000	0	.000	0	0-0
TOTAL	18-10	636	0	0	0	0	.000	0	.000	0	0-0



Kentucky Women's Soccer
Individual Career History



Williams, LaMaya

Season	GP-GS	Min.	G	A	Pts	Shot	Shot%	SOG	SOG%	GW	PK-Att
2016	17-7	548	0	0	0	7	.000	4	.571	0	0-0
2017	13-0	222	0	0	0	3	.000	0	.000	0	0-0
TOTAL	30-7	770	0	0	0	10	.000	4	.400	0	0-0

Zoeller, Abigail

Season	GP-GS	Min.	G	A	Pts	Shot	Shot%	SOG	SOG%	GW	PK-Att
2017	16-3	569	0	0	0	9	.000	3	.333	0	0-0
TOTAL	16-3	569	0	0	0	9	.000	3	.333	0	0-0

Season	GP-GS	Minutes	GA	GAAvg	Saves	Save%	W	L	T	Sho
2017	3-2	231:28	6	2.33	11	.647	0	2	0	0
TOTAL	3-2	231:28	6	2.33	11	.647	0	2	0	0