



Louisville at Kentucky

11/16/24 Historic Memorial Coliseum, Lexington, KY
2024-25 Women's Basketball

Game Time: 6:00 PM
Game Duration: 2:11
Attendance: 6,117

Officials: Joseph Vaszily, Dee Kantner, Eric Brewton

Louisville - 61

Record: 2-2

NO.	Name	F	Min	FG			3P			FT			Rebounds			Fouls		TP	AS	TO	ST	Blocks		+/-
				M-A	M-A	M-A	OR	DR	TOT	PF	FD	OR	DR	TOT	BS	BA								
2	Nyla Harris	F	34:07	2-7	0-0	1-3	0	4	4	4	3	5	0	3	0	1	2	0	3	0	1	2	-9	
4	Mackently Randolph	F	14:34	3-6	0-2	2-2	0	0	0	1	1	8	0	0	0	1	1	8	0	0	0	1	1	-11
44	Olivia Cochran	F	37:55	1-11	0-2	0-0	2	4	6	2	1	2	4	5	0	3	2	2	4	5	0	3	2	-15
12	Ja'Leah Williams	G	39:33	4-11	0-1	1-2	2	3	5	3	1	9	6	5	0	1	2	9	6	5	0	1	2	-10
22	Tajianna Roberts	G	34:49	4-9	1-3	3-6	2	2	4	1	4	12	0	1	2	0	1	12	0	1	2	0	1	-20
13	Merissah Russell		24:55	3-8	1-4	0-0	0	2	2	5	0	7	3	0	1	0	0	7	3	0	1	0	0	8
0	Izela Arenas		02:42	0-0	0-0	0-0	0	0	0	1	0	0	0	0	0	0	0	0	0	0	0	0	0	-3
1	Imari Berry		19:52	4-8	4-5	2-2	0	1	1	1	1	14	1	3	1	0	0	14	1	3	1	0	0	3
11	Elif Istanbuluoglu		16:33	2-4	0-0	0-0	0	2	2	2	4	4	0	1	1	0	0	4	0	1	1	0	1	7
Team							3	1	4			0			1									
Totals				23-64	6-17	9-15	9	19	28	20	15	61	14	19	5	6	9							-10

Technical Fouls::NONE

Shooting By Period		
1st FG%	6-17	35.3%
3PT%	1-2	50.0%
FT%	2-2	100%
2nd FG%	7-19	36.8%
3PT%	1-7	14.3%
FT%	0-1	0%
3rd FG%	6-9	66.7%
3PT%	3-3	100.0%
FT%	1-2	50%
4th FG%	4-13	30.8%
3PT%	1-3	33.3%
FT%	3-6	50%
OT FG%	0-6	0.0%
3PT%	0-2	0.0%
FT%	3-4	75%
GM FG%	23-64	35.9%
3PT%	6-17	35.3%
FT%	9-15	60.0%

Dead Ball Rebounds: 6, 2

Kentucky - 71

Record: 4-0

NO.	Name	F	Min	FG			3P			FT			Rebounds			Fouls		TP	AS	TO	ST	Blocks		+/-
				M-A	M-A	M-A	OR	DR	TOT	PF	FD	OR	DR	TOT	BS	BA								
7	Teonni Key	F	38:04	7-12	0-1	3-4	4	5	9	4	3	17	1	7	0	5	0	17	1	7	0	5	0	6
32	Amelia Hassett	F	43:18	2-4	0-1	5-6	0	13	13	3	5	9	1	2	0	0	1	9	1	2	0	0	1	10
13	Clara Strack	C	43:38	5-12	0-1	2-2	2	7	9	1	2	12	3	2	0	3	0	12	3	2	0	3	0	14
3	Georgia Amooore	G	45:00	7-17	3-9	2-2	0	1	1	2	6	19	9	8	2	1	3	19	9	8	2	1	3	10
10	Dazia Lawrence	G	42:42	6-11	1-3	1-4	1	2	3	3	4	14	3	1	0	0	2	14	3	1	0	0	2	16
17	Clara Silva		08:18	0-1	0-0	0-0	0	1	1	0	0	0	0	1	0	0	0	0	0	1	0	0	0	0
5	Cassidy Rowe		01:42	0-0	0-0	0-0	0	0	0	1	0	0	0	1	0	0	0	0	1	0	0	0	0	0
4	Lexi Blue		02:18	0-1	0-1	0-0	0	0	0	1	0	0	0	0	0	0	0	0	0	0	0	0	0	-6
Team							2	2	4			0			2									
Totals				27-58	4-16	13-18	9	31	40	15	20	71	17	24	2	9	6	10						10

Technical Fouls::NONE

Shooting By Period		
1st FG%	8-12	66.7%
3PT%	0-3	0.0%
FT%	0-0	0%
2nd FG%	5-16	31.3%
3PT%	1-6	16.7%
FT%	0-0	0%
3rd FG%	5-11	45.5%
3PT%	3-4	75.0%
FT%	2-4	50%
4th FG%	7-13	53.8%
3PT%	0-2	0.0%
FT%	2-4	50%
OT FG%	2-6	33.3%
3PT%	0-1	0.0%
FT%	9-10	90%
GM FG%	27-58	46.6%
3PT%	4-16	25.0%
FT%	13-18	72.2%

Dead Ball Rebounds: 6, 1

	LOU	UKY
Biggest lead	7 (3 rd 1:08)	10 (1 st OT 0:25)
Best Scoring Run	9 (3 rd 1:08)	8 (1 st 6:11)
Lead Changes	9	
Times Tied	6	
Time with Lead	28:02	11:44

Points from	LOU	UKY
Turnovers	24	18
Paint	30	38
Second Chance	3	10
Fast Breaks	9	4
Bench	25	0

	Period by Period Scoring					
	1st	2nd	3rd	4th	OT1	TOT
LOU	15	15	16	12	3	61
UKY	16	11	15	16	13	71



Officials: Joseph Vaszily, Dee Kantner, Eric Brewton

Period 1

Quarter Starters:

UKY	3 Amoores G	7 Key T	10 Lawrence D	13 Strack C	32 Hassett A
LOU	2 Harris N	4 Randolph M	12 Williams J	22 Roberts T	44 Cochran O

Game Time	UKY	Score	Diff	LOU
10:00	7 KEY T jumpball lost			44 COCHRAN O jumpball won
09:48		0-2	-2	12 WILLIAMS J 2pt FG in the paint, layup made (2)
09:33	7 KEY T 2pt FG in the paint, layup made (2)	2-2	0	
09:33	13 STRACK C assist (1)			
09:19	32 HASSETT A foul shooting (1 - 1)			4 RANDOLPH M foul drawn (1)
09:19		2-3	-1	4 RANDOLPH M free throw 1 - 2 made (1)
09:19		2-4	-2	4 RANDOLPH M free throw 2 - 2 made (2)
08:56	3 AMOORE G 3pt FG , jump shot missed			
08:53	13 STRACK C offensive rebound (1)			
08:50	13 STRACK C 3pt FG second chance, jump shot missed			
08:47				44 COCHRAN O defensive rebound (1)
08:35				2 HARRIS N 2pt FG in the paint, layup missed
08:32	13 STRACK C defensive rebound (2)			
08:20	13 STRACK C 2pt FG outside the paint, turnaround jump shot made (2)	4-4	0	
08:20	3 AMOORE G assist (1)			
08:05				22 ROBERTS T 2pt FG outside the paint, jump shot missed
08:01				22 ROBERTS T offensive rebound (1)
08:00				22 ROBERTS T 3pt FG second chance, jump shot missed
07:57	10 LAWRENCE D defensive rebound (1)			
07:48	10 LAWRENCE D 2pt FG in the paint, layup missed			
07:45				22 ROBERTS T defensive rebound (2)
07:40				12 WILLIAMS J 2pt FG in the paint, layup missed
07:37	13 STRACK C defensive rebound (3)			
07:31	7 KEY T 2pt FG in the paint, jump shot made (4)	6-4	2	
07:31	3 AMOORE G assist (2)			
07:05				4 RANDOLPH M 2pt FG in the paint, jump shot blocked
07:05	7 KEY T block (1)			
07:02	32 HASSETT A defensive rebound (1)			
06:49	13 STRACK C 2pt FG in the paint, layup made (4)	8-4	4	
06:49	7 KEY T assist (1)			
06:22				44 COCHRAN O 2pt FG outside the paint, turnaround jump shot missed
06:19	13 STRACK C defensive rebound (4)			
06:11	3 AMOORE G 2pt FG outside the paint, pull up jump shot made (2)	10-4	6	
05:50				4 RANDOLPH M substitution out
05:50				13 RUSSELL M substitution in
05:42		10-6	4	12 WILLIAMS J 2pt FG in the paint, pull up jump shot made (4)
05:24	3 AMOORE G turnover bad pass (1)			
05:13		10-9	1	13 RUSSELL M 3pt FG from turnover, jump shot made (3)
05:13				44 COCHRAN O assist (1)
04:59	13 STRACK C turnover travel (1)			
04:59				Timeout media



Officials: Joseph Vaszily, Dee Kantner, Eric Brewton

Game Time	UKY	Score	Diff	LOU
04:39				44 COCHRAN O 2pt FG from turnover in the paint, layup blocked
04:39	13 STRACK C block (1)			
04:35	7 KEY T defensive rebound (1)			
04:32	3 AMOORE G turnover bad pass (2)			22 ROBERTS T steal (1)
04:26	3 AMOORE G foul personal (1 - 2)			2 HARRIS N foul drawn (1)
04:14				44 COCHRAN O turnover travel (1)
04:01	3 AMOORE G turnover bad pass (3)			22 ROBERTS T steal (2)
03:57		10-11	-1	22 ROBERTS T 2pt FG fast break from turnover in the paint, layup made (2)
03:37	32 HASSETT A foul drawn (1)			13 RUSSELL M foul personal (1 - 1)
03:37	7 KEY T substitution out			
03:37	17 SILVA C substitution in			
03:17	3 AMOORE G 3pt FG , jump shot missed			
03:14				2 HARRIS N defensive rebound (1)
03:10				44 COCHRAN O turnover lost ball (2)
02:46	10 LAWRENCE D 2pt FG from turnover in the paint, layup made (2)	12-11	1	
02:46	13 STRACK C assist (2)			
02:38				12 WILLIAMS J 2pt FG in the paint, jump shot missed
02:35				12 WILLIAMS J offensive rebound (1)
02:34				13 RUSSELL M 2pt FG second chance outside the paint, jump shot missed
02:33				12 WILLIAMS J offensive rebound (2)
02:33				12 WILLIAMS J turnover travel (1)
02:17	3 AMOORE G 2pt FG from turnover in the paint, jump shot made (4)	14-11	3	
02:05		14-13	1	2 HARRIS N 2pt FG in the paint, layup made (2)
02:05				13 RUSSELL M assist (1)
01:42	3 AMOORE G turnover bad pass (4)			
01:42				22 ROBERTS T substitution out
01:42				44 COCHRAN O substitution out
01:42				1 BERRY I substitution in
01:42				11 ISTANBULLUOGLU E substitution in
01:42	32 HASSETT A substitution out			
01:42	5 ROWE C substitution in			
01:42				12 WILLIAMS J substitution out
01:42				0 ARENAS I substitution in
01:33				1 BERRY I 2pt FG from turnover outside the paint, jump shot missed
01:31				offensive dead ball rebound (1)
01:31	5 ROWE C foul personal (1 - 3)			11 ISTANBULLUOGLU E foul drawn (1)
01:25		14-15	-1	11 ISTANBULLUOGLU E 2pt FG from turnover second chance in the paint, driving layup made (2)
01:09	17 SILVA C turnover 3 seconds (1)			
00:49				1 BERRY I 2pt FG from turnover in the paint, layup missed
00:47	17 SILVA C defensive rebound (1)			
00:30	5 ROWE C turnover bad pass (1)			
00:22				2 HARRIS N turnover travel (1)
00:08	3 AMOORE G foul drawn (1)			0 ARENAS I foul personal (1 - 2)
00:03	3 AMOORE G 2pt FG from turnover in the paint, layup made (6)	16-15	1	



Official Basketball Play by Play - 1st Period
Louisville at Kentucky
11/16/24 Historic Memorial Coliseum, Lexington, KY
2024-25 Women's Basketball

Game Time: 6:00 PM
Game Duration: 2:11
Attendance: 6,117

Officials: Joseph Vaszily, Dee Kantner, Eric Brewton

Game Time	UKY	Score	Diff	LOU
END OF PERIOD				
UKY 16-15 LOU				



Louisville at Kentucky

11/16/24 Historic Memorial Coliseum, Lexington, KY
2024-25 Women's Basketball

Game Time: 6:00 PM
Game Duration: 2:11
Attendance: 6,117

Officials: Joseph Vaszily, Dee Kantner, Eric Brewton

Louisville - 15

NO.	Name	F	Min	FG			Rebounds			Fouls		TP	AS	TO	ST	Blocks		+/-
				M-A	3P	FT	OR	DR	TOT	PF	FD					BS	BA	
2	Nyla Harris	F	10:00	1-2	0-0	0-0	0	1	1	0	1	2	0	1	0	0	0	-1
4	Mackeny Randolph	F	04:10	0-1	0-0	2-2	0	0	0	0	1	2	0	0	0	0	1	-6
44	Olivia Cochran	F	08:18	0-2	0-0	0-0	0	1	1	0	0	0	1	2	0	0	1	-1
12	Ja'Leah Williams	G	08:18	2-4	0-0	0-0	2	0	2	0	0	4	0	1	0	0	0	-1
22	Tajianna Roberts	G	08:18	1-3	0-1	0-0	1	1	2	0	0	2	0	0	2	0	0	-1
13	Merissah Russell		05:50	1-2	1-1	0-0	0	0	0	1	0	3	1	0	0	0	0	5
0	Izela Arenas		01:42	0-0	0-0	0-0	0	0	0	1	0	0	0	0	0	0	0	0
1	Imari Berry		01:42	0-2	0-0	0-0	0	0	0	0	0	0	0	0	0	0	0	0
11	Elif Istanbuluoglu		01:42	1-1	0-0	0-0	0	0	0	0	1	2	0	0	0	0	0	0
Team							0	0	0		0		0					
Totals				6-17	1-2	2-2	3	3	6	2	3	15	2	4	2	0	2	-1

Shooting By Period		
1st FG%	6-17	35.3%
3PT%	1-2	50.0%
FT%	2-2	100%
GM FG%	6-17	35.3%
3PT%	1-2	50.0%
FT%	2-2	100.0%

Dead Ball Rebounds: 1, 0

Technical Fouls::NONE

Kentucky - 16

NO.	Name	F	Min	FG			Rebounds			Fouls		TP	AS	TO	ST	Blocks		+/-
				M-A	3P	FT	OR	DR	TOT	PF	FD					BS	BA	
7	Teonni Key	F	06:23	2-2	0-0	0-0	0	1	1	0	0	4	1	0	0	1	0	-1
32	Amelia Hassett	F	08:18	0-0	0-0	0-0	0	1	1	1	1	0	0	0	0	0	0	1
13	Clara Strack	C	10:00	2-3	0-1	0-0	1	3	4	0	0	4	2	1	0	1	0	1
3	Georgia Amoore	G	10:00	3-5	0-2	0-0	0	0	0	1	1	6	2	4	0	0	0	1
10	Dazia Lawrence	G	10:00	1-2	0-0	0-0	0	1	1	0	0	2	0	0	0	0	0	1
17	Clara Silva		03:37	0-0	0-0	0-0	0	1	1	0	0	0	0	1	0	0	0	2
5	Cassidy Rowe		01:42	0-0	0-0	0-0	0	0	0	1	0	0	0	1	0	0	0	0
Team							0	0	0		0		0					
Totals				8-12	0-3	0-0	1	7	8	3	2	16	5	7	0	2	0	1

Shooting By Period		
1st FG%	8-12	66.7%
3PT%	0-3	0.0%
FT%	0-0	0%
GM FG%	8-12	66.7%
3PT%	0-3	0.0%
FT%	0-0	0.0%

Dead Ball Rebounds: 0, 0

Technical Fouls::NONE

	LOU	UKY
Biggest lead	2 (1 st 9:48)	6 (1 st 6:11)
Best Scoring Run	7 (1 st 3:57)	8 (1 st 6:11)
Lead Changes	5	
Times Tied	2	
Time with Lead	03:46	04:59

Points from	LOU	UKY
Turnovers	7	6
Paint	10	12
Second Chance	2	0
Fast Breaks	2	0
Bench	5	0

	Period by Period Scoring					
	1st	2nd	3rd	4th	OT1	TOT
LOU	15	15	16	12	3	61
UKY	16	11	15	16	13	71



Officials: Joseph Vaszily, Dee Kantner, Eric Brewton

Period 2

Quarter Starters:

UKY	3 Amoores G	4 Blue L	7 Key T	17 Silva C	32 Hassett A
LOU	1 Berry I	2 Harris N	11 Istanbuluoglu E	12 Williams J	13 Russell M

Game Time	UKY	Score	Diff	LOU
10:00	5 ROWE C substitution out			
10:00	10 LAWRENCE D substitution out			
10:00	13 STRACK C substitution out			
10:00	4 BLUE L substitution in			
10:00	7 KEY T substitution in			
10:00	32 HASSETT A substitution in			
10:00				0 ARENAS I substitution out
10:00				12 WILLIAMS J substitution in
09:55	7 KEY T turnover travel (1)			
09:39		16-17	-1	11 ISTANBULLUOGLU E 2pt FG from turnover in the paint, layup made (4)
09:39				13 RUSSELL M assist (2)
09:20	17 SILVA C 2pt FG in the paint, layup missed			
09:17				2 HARRIS N defensive rebound (2)
09:05				11 ISTANBULLUOGLU E 2pt FG in the paint, floating jump shot blocked
09:05	7 KEY T block (2)			
09:01	32 HASSETT A defensive rebound (2)			
09:00	Timeout 30 Sec			
08:42	7 KEY T 3pt FG , jump shot missed			
08:39				12 WILLIAMS J defensive rebound (3)
08:38		16-19	-3	2 HARRIS N 2pt FG fast break in the paint, layup made (4)
08:38				12 WILLIAMS J assist (1)
08:38	4 BLUE L foul shooting (1 - 1)			2 HARRIS N foul drawn (2)
08:38	17 SILVA C substitution out			
08:38	13 STRACK C substitution in			
08:38				2 HARRIS N free throw fast break 1 - 1 missed
08:38	7 KEY T defensive rebound (2)			
08:36	7 KEY T turnover bad pass (2)			
08:32				2 HARRIS N substitution out
08:32				44 COCHRAN O substitution in
08:10		16-21	-5	12 WILLIAMS J 2pt FG from turnover in the paint, layup made (6)
07:42	4 BLUE L 3pt FG , jump shot missed			
07:42				defensive dead ball rebound (2)
07:42	7 KEY T foul personal (1 - 2)			11 ISTANBULLUOGLU E foul drawn (2)
07:42	4 BLUE L substitution out			
07:42	10 LAWRENCE D substitution in			
07:28				12 WILLIAMS J 3pt FG , jump shot missed
07:24	13 STRACK C defensive rebound (5)			
07:04	3 AMOORE G foul drawn (2)			11 ISTANBULLUOGLU E foul personal (1 - 1)
07:04				1 BERRY I substitution out
07:04				22 ROBERTS T substitution in
06:48	7 KEY T 2pt FG outside the paint, turnaround jump shot missed			



Official Basketball Play by Play - 2nd Period
Louisville at Kentucky
 11/16/24 Historic Memorial Coliseum, Lexington, KY
 2024-25 Women's Basketball

Game Time: 6:00 PM
Game Duration: 2:11
Attendance: 6,117

Officials: Joseph Vaszily, Dee Kantner, Eric Brewton

Game Time	UKY	Score	Diff	LOU
06:44				11 ISTANBULLUOGLU E defensive rebound (1)
06:33				13 RUSSELL M 3pt FG , jump shot missed
06:32	defensive dead ball rebound (1)			
06:13	3 AMOORE G 3pt FG , jump shot made (9)	19-21	-2	
06:13	10 LAWRENCE D assist (1)			
06:01		19-23	-4	44 COCHRAN O 2pt FG in the paint, layup made (2)
06:01				12 WILLIAMS J assist (2)
05:45	10 LAWRENCE D 2pt FG in the paint, driving layup made (4)	21-23	-2	
05:41				11 ISTANBULLUOGLU E turnover bad pass (1)
05:41				13 RUSSELL M substitution out
05:41				4 RANDOLPH M substitution in
05:39	7 KEY T turnover bad pass (3)			
05:39				11 ISTANBULLUOGLU E substitution out
05:39				2 HARRIS N substitution in
05:22		21-25	-4	12 WILLIAMS J 2pt FG from turnover outside the paint, pull up jump shot made (8)
05:22				44 COCHRAN O assist (2)
04:55	3 AMOORE G 3pt FG , jump shot missed			
04:53				defensive rebound (10)
04:43	3 AMOORE G steal (1)			12 WILLIAMS J turnover bad pass (2)
04:38	7 KEY T turnover travel (4)			
04:19				2 HARRIS N 2pt FG from turnover outside the paint, jump shot missed
04:17				offensive rebound (11)
04:13				4 RANDOLPH M 3pt FG from turnover second chance, jump shot missed
04:12	32 HASSETT A defensive rebound (3)			
04:12	32 HASSETT A foul drawn (2)			4 RANDOLPH M foul personal (1 - 2)
04:00	10 LAWRENCE D 3pt FG , jump shot missed			
03:58	7 KEY T offensive rebound (3)			
03:56	32 HASSETT A 3pt FG second chance, jump shot blocked			
03:56				4 RANDOLPH M block (1)
03:52				12 WILLIAMS J defensive rebound (4)
03:51		21-27	-6	4 RANDOLPH M 2pt FG fast break in the paint, layup made (4)
03:51				12 WILLIAMS J assist (3)
03:39	13 STRACK C 2pt FG in the paint, layup made (6)	23-27	-4	
03:39	3 AMOORE G assist (3)			
03:11				44 COCHRAN O 2pt FG in the paint, jump shot missed
03:08	32 HASSETT A defensive rebound (4)			
02:48	7 KEY T 2pt FG outside the paint, jump shot made (6)	25-27	-2	
02:48	32 HASSETT A assist (1)			
02:29				22 ROBERTS T 3pt FG , jump shot blocked
02:29	3 AMOORE G block (1)			
02:24	13 STRACK C defensive rebound (6)			
02:15	10 LAWRENCE D turnover lost ball (1)			
02:07				4 RANDOLPH M 3pt FG from turnover, jump shot missed
02:03				22 ROBERTS T offensive rebound (3)
01:47				44 COCHRAN O 3pt FG from turnover second chance, jump shot missed
01:43	32 HASSETT A defensive rebound (5)			



Official Basketball Play by Play - 2nd Period
Louisville at Kentucky
 11/16/24 Historic Memorial Coliseum, Lexington, KY
 2024-25 Women's Basketball

Game Time: 6:00 PM
Game Duration: 2:11
Attendance: 6,117

Officials: Joseph Vaszily, Dee Kantner, Eric Brewton

Game Time	UKY	Score	Diff	LOU
01:39	10 LAWRENCE D 2pt FG in the paint, layup blocked			
01:39				44 COCHRAN O block (1)
01:39	offensive rebound (17)			
01:39				4 RANDOLPH M substitution out
01:39				13 RUSSELL M substitution in
01:36	13 STRACK C 2pt FG second chance outside the paint, jump shot missed			
01:33				13 RUSSELL M defensive rebound (1)
01:30		25-30	-5	22 ROBERTS T 3pt FG , jump shot made (5)
01:30				12 WILLIAMS J assist (4)
01:04	7 KEY T 2pt FG outside the paint, jump shot missed			
00:59	13 STRACK C offensive rebound (7)			
00:59	13 STRACK C 2pt FG second chance in the paint, tip-in layup missed			
00:59				44 COCHRAN O defensive rebound (2)
00:53				2 HARRIS N 2pt FG in the paint, layup blocked
00:53	7 KEY T block (3)			
00:53				offensive rebound (16)
00:49				13 RUSSELL M 2pt FG second chance in the paint, layup missed
00:48	defensive rebound (19)			
00:28	7 KEY T 2pt FG in the paint, layup made (8)	27-30	-3	
00:28	3 AMOORE G assist (4)			
00:01				12 WILLIAMS J 2pt FG in the paint, layup missed
00:00	32 HASSETT A defensive rebound (6)			
END OF PERIOD				
UKY 27-30 LOU				



Louisville at Kentucky

11/16/24 Historic Memorial Coliseum, Lexington, KY
2024-25 Women's Basketball

Game Time: 6:00 PM
Game Duration: 2:11
Attendance: 6,117

Officials: Joseph Vaszily, Dee Kantner, Eric Brewton

Louisville - 15

NO.	Name	Min	FG			Rebounds			Fouls		TP	AS	TO	ST	Blocks		+/-
			M-A	3P	FT	OR	DR	TOT	PF	FD					BS	BA	
2	Nyla Harris	F 07:07	1-3	0-0	0-1	0	1	1	0	1	2	0	0	0	0	1	5
4	Mackently Randolph	F 04:02	1-3	0-2	0-0	0	0	0	1	0	2	0	0	0	1	0	0
44	Olivia Cochran	F 08:32	1-3	0-1	0-0	0	1	1	0	0	2	1	0	0	1	0	0
12	Ja'Leah Williams	G 10:00	2-4	0-1	0-0	0	2	2	0	0	4	4	1	0	0	0	4
22	Tajianna Roberts	G 07:04	1-2	1-2	0-0	1	0	1	0	0	3	0	0	0	0	1	-2
0	Izela Arenas	00:00	0-0	0-0	0-0	0	0	0	0	0	0	0	0	0	0	0	0
1	Imari Berry	02:56	0-0	0-0	0-0	0	0	0	0	0	0	0	0	0	0	0	6
11	Elif Istanbuluoglu	04:21	1-2	0-0	0-0	0	1	1	1	1	2	0	1	0	0	1	3
13	Merissah Russell	05:58	0-2	0-1	0-0	0	1	1	0	0	0	1	0	0	0	0	4
Team						2	1	3			0		0				
Totals			7-19	1-7	0-1	3	7	10	2	2	15	6	2	0	2	3	4

Shooting By Period		
2nd FG%	7-19	36.8%
3PT%	1-7	14.3%
FT%	0-1	0%
GM FG%	7-19	36.8%
3PT%	1-7	14.3%
FT%	0-1	0.0%

Dead Ball Rebounds: 0, 1

Technical Fouls::NONE

Kentucky - 11

NO.	Name	Min	FG			Rebounds			Fouls		TP	AS	TO	ST	Blocks		+/-
			M-A	3P	FT	OR	DR	TOT	PF	FD					BS	BA	
7	Teonni Key	F 10:00	2-5	0-1	0-0	1	1	2	1	0	4	0	4	0	2	0	-4
32	Amelia Hassett	F 10:00	0-1	0-1	0-0	0	5	5	0	1	0	1	0	0	0	1	-4
13	Clara Strack	C 08:38	1-3	0-0	0-0	1	2	3	0	0	2	0	0	0	0	0	0
3	Georgia Amooore	G 10:00	1-2	1-2	0-0	0	0	0	0	1	3	2	0	1	1	0	-4
10	Dazia Lawrence	G 07:42	1-3	0-1	0-0	0	0	0	0	0	2	1	1	0	0	1	2
5	Cassidy Rowe	00:00	0-0	0-0	0-0	0	0	0	0	0	0	0	0	0	0	0	0
17	Clara Silva	01:22	0-1	0-0	0-0	0	0	0	0	0	0	0	0	0	0	0	-4
4	Lexi Blue	02:18	0-1	0-1	0-0	0	0	0	1	0	0	0	0	0	0	0	-6
Team						1	1	2			0		0				
Totals			5-16	1-6	0-0	3	9	12	2	2	11	4	5	1	3	2	-4

Shooting By Period		
2nd FG%	5-16	31.3%
3PT%	1-6	16.7%
FT%	0-0	0%
GM FG%	5-16	31.3%
3PT%	1-6	16.7%
FT%	0-0	0.0%

Dead Ball Rebounds: 0, 1

Technical Fouls::NONE

	LOU	UKY
Biggest lead	6 (2 nd 3:51)	0 (1 st 10:00)
Best Scoring Run	6(2 nd 8:10)	4(2 nd 2:48)
Lead Changes	1	
Times Tied	0	
Time with Lead	09:39	00:00

Points from	LOU	UKY
Turnovers	6	0
Paint	10	6
Second Chance	0	0
Fast Breaks	4	0
Bench	2	0

Period by Period Scoring						
	1st	2nd	3rd	4th	OT1	TOT
LOU	15	15	16	12	3	61
UKY	16	11	15	16	13	71



Officials: Joseph Vaszily, Dee Kantner, Eric Brewton

Louisville - 30

NO.	Name	F	Min	FG			Rebounds			Fouls		TP	AS	TO	ST	Blocks		+/-
				M-A	M-A	M-A	OR	DR	TOT	PF	FD					BS	BA	
2	Nyla Harris	F	17:07	2-5	0-0	0-1	0	2	2	0	2	4	0	1	0	0	1	4
4	Mackently Randolph	F	08:12	1-4	0-2	2-2	0	0	0	1	1	4	0	0	0	1	1	-6
44	Olivia Cochran	F	16:50	1-5	0-1	0-0	0	2	2	0	0	2	2	2	0	1	1	-1
12	Ja'Leah Williams	G	18:18	4-8	0-1	0-0	2	2	4	0	0	8	4	2	0	0	0	3
22	Tajianna Roberts	G	15:22	2-5	1-3	0-0	2	1	3	0	0	5	0	0	2	0	1	-3
13	Merissah Russell		11:48	1-4	1-2	0-0	0	1	1	1	0	3	2	0	0	0	0	9
0	Izela Arenas		01:42	0-0	0-0	0-0	0	0	0	1	0	0	0	0	0	0	0	0
1	Imari Berry		04:38	0-2	0-0	0-0	0	0	0	0	0	0	0	0	0	0	0	6
11	Elif Istanbuluoglu		06:03	2-3	0-0	0-0	0	1	1	1	2	4	0	1	0	0	1	3
Team							2	1	3			0		0				
Totals				13-36	2-9	2-3	6	10	16	4	5	30	8	6	2	2	5	3

Shooting By Period		
1st FG%	6-17	35.3%
3PT%	1-2	50.0%
FT%	2-2	100%
2nd FG%	7-19	36.8%
3PT%	1-7	14.3%
FT%	0-1	0%
GM FG%	13-36	36.1%
3PT%	2-9	22.2%
FT%	2-3	66.7%

Dead Ball Rebounds: 1, 1

Technical Fouls::NONE

Kentucky - 27

NO.	Name	F	Min	FG			Rebounds			Fouls		TP	AS	TO	ST	Blocks		+/-
				M-A	M-A	M-A	OR	DR	TOT	PF	FD					BS	BA	
7	Teonni Key	F	16:23	4-7	0-1	0-0	1	2	3	1	0	8	1	4	0	3	0	-5
32	Amelia Hassett	F	18:18	0-1	0-1	0-0	0	6	6	1	2	0	1	0	0	0	1	-3
13	Clara Strack	C	18:38	3-6	0-1	0-0	2	5	7	0	0	6	2	1	0	1	0	1
3	Georgia Amooore	G	20:00	4-7	1-4	0-0	0	0	0	1	2	9	4	4	1	1	0	-3
10	Dazia Lawrence	G	17:42	2-5	0-1	0-0	0	1	1	0	0	4	1	1	0	0	1	3
17	Clara Silva		04:59	0-1	0-0	0-0	0	1	1	0	0	0	0	1	0	0	0	-2
5	Cassidy Rowe		01:42	0-0	0-0	0-0	0	0	0	1	0	0	0	1	0	0	0	0
4	Lexi Blue		02:18	0-1	0-1	0-0	0	0	0	1	0	0	0	0	0	0	0	-6
Team							1	1	2			0		0				
Totals				13-28	1-9	0-0	4	16	20	5	4	27	9	12	1	5	2	-3

Shooting By Period		
1st FG%	8-12	66.7%
3PT%	0-3	0.0%
FT%	0-0	0%
2nd FG%	5-16	31.3%
3PT%	1-6	16.7%
FT%	0-0	0%
GM FG%	13-28	46.4%
3PT%	1-9	11.1%
FT%	0-0	0.0%

Dead Ball Rebounds: 0, 1

Technical Fouls::NONE

	LOU	UKY
Biggest lead	6 (2 nd 3:51)	6 (1 st 6:11)
Best Scoring Run	7 (1 st 3:57)	8 (1 st 6:11)
Lead Changes	6	
Times Tied	2	
Time with Lead	13:25	05:20

Points from	LOU	UKY
Turnovers	13	6
Paint	20	18
Second Chance	2	0
Fast Breaks	6	0
Bench	7	0

	Period by Period Scoring					
	1st	2nd	3rd	4th	OT1	TOT
LOU	15	15	16	12	3	61
UKY	16	11	15	16	13	71



Period 3

Quarter Starters:

UKY	3 Amoores G	7 Key T	10 Lawrence D	13 Strack C	32 Hassett A
LOU	2 Harris N	4 Randolph M	12 Williams J	22 Roberts T	44 Cochran O

Game Time	UKY	Score	Diff	LOU
10:00				13 RUSSELL M substitution out
10:00				4 RANDOLPH M substitution in
09:38				12 WILLIAMS J turnover lost ball (3)
09:34	7 KEY T 2pt FG from turnover in the paint, layup missed			
09:33				defensive dead ball rebound (3)
09:33	13 STRACK C foul personal (1 - 1)			44 COCHRAN O foul drawn (1)
09:14		27-32	-5	4 RANDOLPH M 2pt FG in the paint, layup made (6)
08:57	10 LAWRENCE D foul drawn (1)			2 HARRIS N foul personal (1 - 1)
08:55	10 LAWRENCE D 3pt FG , jump shot made (7)	30-32	-2	
08:55	3 AMOORE G assist (5)			
08:40				44 COCHRAN O turnover bad pass (3)
08:11	3 AMOORE G 2pt FG from turnover outside the paint, floating jump shot blocked			
08:11				2 HARRIS N block (1)
08:10	offensive dead ball rebound (2)			
08:10	turnover shot clock (13)			
07:51				12 WILLIAMS J 2pt FG from turnover in the paint, layup missed
07:48	7 KEY T defensive rebound (4)			
07:42	3 AMOORE G 3pt FG , jump shot missed			
07:39	7 KEY T offensive rebound (5)			
07:26	7 KEY T 2pt FG second chance outside the paint, jump shot missed			
07:23				2 HARRIS N defensive rebound (3)
07:12	10 LAWRENCE D foul personal (1 - 2)			22 ROBERTS T foul drawn (1)
07:03		30-34	-4	4 RANDOLPH M 2pt FG in the paint, floating jump shot made (8)
06:39	7 KEY T turnover lost ball (5)			
06:12		30-36	-6	22 ROBERTS T 2pt FG from turnover outside the paint, pull up jump shot made (7)
05:49	7 KEY T 2pt FG in the paint, layup made (10)	32-36	-4	
05:49	3 AMOORE G assist (6)			
05:41				22 ROBERTS T turnover travel (1)
05:19	7 KEY T foul drawn (1)			2 HARRIS N foul shooting (2 - 2)
05:19	7 KEY T free throw 1 - 2 missed			
05:19	offensive dead ball rebound (3)			
05:19	7 KEY T free throw 2 - 2 made (11)	33-36	-3	
05:19	7 KEY T substitution out			
05:19	17 SILVA C substitution in			
05:03				2 HARRIS N turnover 3 seconds (2)
04:50	3 AMOORE G 3pt FG from turnover, jump shot made (12)	36-36	0	
04:50	10 LAWRENCE D assist (2)			
04:17				22 ROBERTS T 2pt FG in the paint, floating jump shot missed
04:14	32 HASSETT A defensive rebound (7)			
03:48	32 HASSETT A 2pt FG in the paint, layup made (2)	38-36	2	



Official Basketball Play by Play - 3rd Period
Louisville at Kentucky
 11/16/24 Historic Memorial Coliseum, Lexington, KY
 2024-25 Women's Basketball

Game Time: 6:00 PM
Game Duration: 2:11
Attendance: 6,117

Officials: Joseph Vaszily, Dee Kantner, Eric Brewton

Game Time	UKY	Score	Diff	LOU
03:38				Timeout 30 Sec
03:38				2 HARRIS N substitution out
03:38				4 RANDOLPH M substitution out
03:38				22 ROBERTS T substitution out
03:38				1 BERRY I substitution in
03:38				11 ISTANBULLUOGLU E substitution in
03:38				13 RUSSELL M substitution in
03:25				11 ISTANBULLUOGLU E 2pt FG outside the paint, turnaround jump shot missed
03:21	3 AMOORE G defensive rebound (1)			
03:20	3 AMOORE G turnover lost ball (5)			13 RUSSELL M steal (1)
03:19	32 HASSETT A foul shooting (2 - 3)			12 WILLIAMS J foul drawn (1)
03:19	Timeout media			
03:19				12 WILLIAMS J free throw 1 - 2 missed
03:19				offensive dead ball rebound (4)
03:19		38-37	1	12 WILLIAMS J free throw 2 - 2 made (9)
03:09	3 AMOORE G foul drawn (3)			13 RUSSELL M foul personal (2 - 3)
02:57	3 AMOORE G foul drawn (4)			44 COCHRAN O foul personal (1 - 4)
02:47	10 LAWRENCE D foul drawn (2)			44 COCHRAN O foul shooting (2 - 5)
02:47	10 LAWRENCE D free throw 1 - 2 made (8)	39-37	2	
02:47	10 LAWRENCE D free throw 2 - 2 missed			
02:46				13 RUSSELL M defensive rebound (2)
02:38		39-40	-1	1 BERRY I 3pt FG , jump shot made (3)
02:38				44 COCHRAN O assist (3)
02:12	13 STRACK C 2pt FG in the paint, turnaround jump shot missed			
02:09				44 COCHRAN O defensive rebound (3)
02:00	17 SILVA C substitution out			
02:00	7 KEY T substitution in			
01:47		39-43	-4	1 BERRY I 3pt FG , jump shot made (6)
01:47				44 COCHRAN O assist (4)
01:29	32 HASSETT A turnover out of bounds (1)			
01:29				12 WILLIAMS J substitution out
01:29				22 ROBERTS T substitution in
01:08		39-46	-7	1 BERRY I 3pt FG from turnover, jump shot made (9)
00:45	3 AMOORE G 3pt FG , jump shot made (15)	42-46	-4	
00:23				44 COCHRAN O turnover lost ball (4)
00:00	3 AMOORE G 2pt FG from turnover in the paint, layup blocked			
00:00				44 COCHRAN O block (2)
00:00				22 ROBERTS T defensive rebound (4)
END OF PERIOD				
UKY 42-46 LOU				



Louisville at Kentucky

11/16/24 Historic Memorial Coliseum, Lexington, KY
2024-25 Women's Basketball

Game Time: 6:00 PM
Game Duration: 2:11
Attendance: 6,117

Officials: Joseph Vaszily, Dee Kantner, Eric Brewton

Louisville - 16

NO.	Name	Min	FG			Rebounds			Fouls		TP	AS	TO	ST	Blocks		+/-
			M-A	M-A	M-A	OR	DR	TOT	PF	FD					BS	BA	
2	Nyla Harris	F 06:22	0-0	0-0	0-0	0	1	1	2	0	0	0	1	0	1	0	-5
4	Mackently Randolph	F 06:22	2-2	0-0	0-0	0	0	0	0	0	4	0	0	0	0	0	-5
44	Olivia Cochran	F 10:00	0-0	0-0	0-0	0	1	1	2	1	0	2	2	0	1	0	1
12	Ja'Leah Williams	G 08:31	0-1	0-0	1-2	0	0	0	0	1	1	0	1	0	0	0	1
22	Tajianna Roberts	G 07:51	1-2	0-0	0-0	0	1	1	0	1	2	0	1	0	0	0	-5
1	Imari Berry	03:38	3-3	3-3	0-0	0	0	0	0	0	9	0	0	0	0	0	6
11	Elif Istanbuluoglu	03:38	0-1	0-0	0-0	0	0	0	0	0	0	0	0	0	0	0	6
13	Merissah Russell	03:38	0-0	0-0	0-0	0	1	1	1	0	0	0	0	1	0	0	6
Team						0	0	0		0		0					
Totals			6-9	3-3	1-2	0	4	4	5	3	16	2	5	1	2	0	1

Shooting By Period		
3rd FG%	6-9	66.7%
3PT%	3-3	100.0%
FT%	1-2	50%
GM FG%	6-9	66.7%
3PT%	3-3	100.0%
FT%	1-2	50.0%

Dead Ball Rebounds: 1, 1

Technical Fouls::NONE

Kentucky - 15

NO.	Name	Min	FG			Rebounds			Fouls		TP	AS	TO	ST	Blocks		+/-
			M-A	M-A	M-A	OR	DR	TOT	PF	FD					BS	BA	
7	Teonni Key	F 06:41	1-3	0-0	1-2	1	1	2	0	1	3	0	1	0	0	0	-3
32	Amelia Hassett	F 10:00	1-1	0-0	0-0	0	1	1	1	0	2	0	1	0	0	0	-1
13	Clara Strack	C 10:00	0-1	0-0	0-0	0	0	0	1	0	0	0	0	0	0	0	-1
3	Georgia Amooore	G 10:00	2-5	2-3	0-0	0	1	1	0	2	6	2	1	0	0	2	-1
10	Dazia Lawrence	G 10:00	1-1	1-1	1-2	0	0	0	1	2	4	1	0	0	0	0	-1
17	Clara Silva	03:19	0-0	0-0	0-0	0	0	0	0	0	0	0	0	0	0	0	2
Team						0	0	0		0		1					
Totals			5-11	3-4	2-4	1	3	4	3	5	15	3	4	0	0	2	-1

Shooting By Period		
3rd FG%	5-11	45.5%
3PT%	3-4	75.0%
FT%	2-4	50%
GM FG%	5-11	45.5%
3PT%	3-4	75.0%
FT%	2-4	50.0%

Dead Ball Rebounds: 2, 0

Technical Fouls::NONE

	LOU	UKY
Biggest lead	7 (3 rd 1:08)	2 (3 rd 3:48)
Best Scoring Run	9(3 rd 1:08)	8(3 rd 3:48)
Lead Changes	2	
Times Tied	1	
Time with Lead	07:22	01:10

Points from	LOU	UKY
Turnovers	6	4
Paint	4	4
Second Chance	0	0
Fast Breaks	0	0
Bench	9	0

	Period by Period Scoring					
	1st	2nd	3rd	4th	OT1	TOT
LOU	15	15	16	12	3	61
UKY	16	11	15	16	13	71



Officials: Joseph Vaszily, Dee Kantner, Eric Brewton

Period 4

Quarter Starters:

UKY	3 Amoore G	7 Key T	10 Lawrence D	13 Strack C	32 Hassett A
LOU	1 Berry I	11 Istanbuluoglu E	13 Russell M	22 Roberts T	44 Cochran O

Game Time	UKY	Score	Diff	LOU
09:45	3 AMOORE G 2pt FG in the paint, driving layup made (17)	44-46	-2	
09:29		44-49	-5	1 BERRY I 3pt FG , jump shot made (12)
09:29				13 RUSSELL M assist (3)
09:05	7 KEY T 2pt FG in the paint, turnaround jump shot made (13)	46-49	-3	
09:05	3 AMOORE G assist (7)			
08:51				13 RUSSELL M 3pt FG , jump shot missed
08:49	10 LAWRENCE D defensive rebound (2)			
08:44	10 LAWRENCE D 2pt FG in the paint, layup blocked			
08:44				44 COCHRAN O block (3)
08:44	offensive rebound (26)			
08:43				22 ROBERTS T substitution out
08:43				12 WILLIAMS J substitution in
08:40	13 STRACK C foul drawn (1)			11 ISTANBULLUOGLU E foul personal (2 - 1)
08:37	13 STRACK C 2pt FG second chance outside the paint, jump shot made (8)	48-49	-1	
08:37	3 AMOORE G assist (8)			
08:30				1 BERRY I 3pt FG , jump shot missed
08:28				44 COCHRAN O offensive rebound (4)
08:26				44 COCHRAN O 2pt FG second chance in the paint, jump shot missed
08:23	32 HASSETT A defensive rebound (8)			
08:14	7 KEY T foul offensive (2 - 1)			11 ISTANBULLUOGLU E foul drawn (3)
08:14	7 KEY T turnover offensive (6)			
07:50				44 COCHRAN O 2pt FG from turnover in the paint, jump shot blocked
07:50	7 KEY T block (4)			
07:46				44 COCHRAN O offensive rebound (5)
07:43				turnover shot clock (12)
07:32	3 AMOORE G turnover travel (6)			
07:14	jump ball situation			
07:12		48-51	-3	13 RUSSELL M 2pt FG from turnover in the paint, layup made (5)
07:12				12 WILLIAMS J assist (5)
06:51	10 LAWRENCE D 2pt FG in the paint, jump shot made (10)	50-51	-1	
06:38	7 KEY T foul shooting (3 - 2)			1 BERRY I foul drawn (1)
06:38				44 COCHRAN O substitution out
06:38				2 HARRIS N substitution in
06:38		50-52	-2	1 BERRY I free throw 1 - 2 made (13)
06:38		50-53	-3	1 BERRY I free throw 2 - 2 made (14)
06:20	13 STRACK C 2pt FG in the paint, turnaround jump shot missed			
06:17				11 ISTANBULLUOGLU E defensive rebound (2)
06:00				12 WILLIAMS J turnover travel (4)
05:54	3 AMOORE G foul drawn (5)			12 WILLIAMS J foul personal (1 - 2)
05:44	3 AMOORE G 3pt FG from turnover, jump shot missed			



Officials: Joseph Vaszily, Dee Kantner, Eric Brewton

Game Time	UKY	Score	Diff	LOU
05:42	10 LAWRENCE D offensive rebound (3)			
05:40	10 LAWRENCE D 2pt FG from turnover second chance in the paint, jump shot made (12)	52-53	-1	
05:20				1 BERRY I 2pt FG outside the paint, jump shot missed
05:19	defensive rebound (29)			
05:19				1 BERRY I substitution out
05:19				22 ROBERTS T substitution in
05:01	7 KEY T foul drawn (2)			12 WILLIAMS J foul personal (2 - 3)
05:00	3 AMOORE G turnover bad pass (7)			11 ISTANBULLUOGLU E steal (1)
04:57	32 HASSETT A foul shooting (3 - 3)			22 ROBERTS T foul drawn (2)
04:57	Timeout media			
04:57				22 ROBERTS T free throw fast break 1 - 2 missed
04:57				offensive dead ball rebound (5)
04:57		52-54	-2	22 ROBERTS T free throw fast break 2 - 2 made (8)
04:37	13 STRACK C 2pt FG in the paint, turnaround jump shot made (10)	54-54	0	
04:37	3 AMOORE G assist (9)			
04:12	10 LAWRENCE D foul drawn (3)			2 HARRIS N foul offensive (3 - 4)
04:12				2 HARRIS N turnover offensive (3)
04:12				13 RUSSELL M substitution out
04:12				1 BERRY I substitution in
03:58	13 STRACK C turnover lost ball (2)			
03:53		54-56	-2	22 ROBERTS T 2pt FG fast break from turnover in the paint, layup made (10)
03:53				12 WILLIAMS J assist (6)
03:32	7 KEY T foul offensive (4 - 4)			11 ISTANBULLUOGLU E foul drawn (4)
03:32	7 KEY T turnover offensive (7)			
03:15	10 LAWRENCE D foul personal (2 - 5)			22 ROBERTS T foul drawn (3)
03:15				22 ROBERTS T free throw 1 - 2 missed
03:15				offensive dead ball rebound (6)
03:15				22 ROBERTS T free throw 2 - 2 missed
03:14	32 HASSETT A defensive rebound (9)			
03:08	Timeout 30 Sec			
03:08				11 ISTANBULLUOGLU E substitution out
03:08				44 COCHRAN O substitution in
03:06	32 HASSETT A turnover bad pass (2)			1 BERRY I steal (1)
03:06				1 BERRY I turnover (1)
02:53	13 STRACK C 2pt FG from turnover outside the paint, turnaround jump shot missed			
02:50				12 WILLIAMS J defensive rebound (5)
02:44				44 COCHRAN O 2pt FG in the paint, turnaround jump shot missed
02:39	7 KEY T defensive rebound (6)			
02:27	32 HASSETT A 2pt FG in the paint, driving layup made (4)	56-56	0	
02:27	13 STRACK C assist (3)			
02:01				44 COCHRAN O 2pt FG in the paint, jump shot missed
01:58	32 HASSETT A defensive rebound (10)			
01:44	3 AMOORE G 2pt FG in the paint, layup missed			
01:43	7 KEY T offensive rebound (7)			
01:43	jump ball situation			
01:39	32 HASSETT A foul drawn (3)			12 WILLIAMS J foul shooting (3 - 5)



Official Basketball Play by Play - 4th Period
Louisville at Kentucky
 11/16/24 Historic Memorial Coliseum, Lexington, KY
 2024-25 Women's Basketball

Game Time: 6:00 PM
Game Duration: 2:11
Attendance: 6,117

Officials: Joseph Vaszily, Dee Kantner, Eric Brewton

Game Time	UKY	Score	Diff	LOU
01:39	32 HASSETT A free throw 1 - 2 made (5)	57-56	1	
01:39	32 HASSETT A free throw 2 - 2 made (6)	58-56	2	
01:30				12 WILLIAMS J 2pt FG in the paint, layup blocked
01:30	13 STRACK C block (2)			
01:26	13 STRACK C defensive rebound (8)			
01:18	Timeout 60 Sec			
00:58	turnover shot clock (23)			
00:43				2 HARRIS N 2pt FG from turnover in the paint, layup missed
00:38	32 HASSETT A defensive rebound (11)			
00:35	10 LAWRENCE D foul drawn (4)			22 ROBERTS T foul personal (1 - 6)
00:35	10 LAWRENCE D free throw 1 - 2 missed			
00:35	offensive dead ball rebound (4)			
00:35	10 LAWRENCE D free throw 2 - 2 missed			
00:34				2 HARRIS N defensive rebound (4)
00:34				Timeout 30 Sec
00:34				2 HARRIS N substitution out
00:34				44 COCHRAN O substitution out
00:34				0 ARENAS I substitution in
00:34				13 RUSSELL M substitution in
00:26		58-58	0	13 RUSSELL M 2pt FG in the paint, layup made (7)
00:26				1 BERRY I assist (1)
00:26	Timeout 30 Sec			
00:26				0 ARENAS I substitution out
00:26				1 BERRY I substitution out
00:26				2 HARRIS N substitution in
00:26				44 COCHRAN O substitution in
00:00	3 AMOORE G 3pt FG , jump shot blocked			
00:00				12 WILLIAMS J block (1)
00:00				44 COCHRAN O defensive rebound (6)
END OF PERIOD				
UKY 58-58 LOU				



Louisville at Kentucky

11/16/24 Historic Memorial Coliseum, Lexington, KY
2024-25 Women's Basketball

Game Time: 6:00 PM
Game Duration: 2:11
Attendance: 6,117

Officials: Joseph Vaszily, Dee Kantner, Eric Brewton

Louisville - 12

NO.	Name	F	Min	FG			Rebounds			Fouls		TP	AS	TO	ST	Blocks		+/-
				M-A	M-A	M-A	OR	DR	TOT	PF	FD					BS	BA	
2	Nyla Harris	F	06:31	0-1	0-0	0-0	0	1	1	1	0	0	0	1	0	0	0	-3
4	Mackently Randolph	F	00:00	0-0	0-0	0-0	0	0	0	0	0	0	0	0	0	0	0	0
44	Olivia Cochran	F	06:23	0-4	0-0	0-0	2	1	3	0	0	0	0	0	0	1	1	-7
12	Ja'Leah Williams	G	08:43	0-1	0-0	0-0	0	1	1	3	0	0	2	1	0	1	1	-3
22	Tajianna Roberts	G	06:36	1-1	0-0	1-4	0	0	0	1	2	3	0	0	0	0	0	-2
11	Elif Istanbuluoglu		06:52	0-0	0-0	0-0	0	1	1	1	2	0	0	0	1	0	0	-2
1	Imari Berry		08:26	1-3	1-2	2-2	0	0	0	0	1	5	1	1	1	0	0	-3
0	Izela Arenas		00:07	0-0	0-0	0-0	0	0	0	0	0	0	0	0	0	0	0	2
13	Merissah Russell		06:22	2-3	0-1	0-0	0	0	0	0	0	4	1	0	0	0	0	-2
Team							0	0	0		0		1					
Totals				4-13	1-3	3-6	2	4	6	6	5	12	4	4	2	2	2	-4

Shooting By Period		
4 th FG%	4-13	30.8%
3PT%	1-3	33.3%
FT%	3-6	50%
GM FG%	4-13	30.8%
3PT%	1-3	33.3%
FT%	3-6	50.0%

Dead Ball Rebounds: 2, 0

Technical Fouls::NONE

Kentucky - 16

NO.	Name	F	Min	FG			Rebounds			Fouls		TP	AS	TO	ST	Blocks		+/-
				M-A	M-A	M-A	OR	DR	TOT	PF	FD					BS	BA	
7	Teonni Key	F	10:00	1-1	0-0	0-0	1	1	2	3	1	2	0	2	0	1	0	4
32	Amelia Hassett	F	10:00	1-1	0-0	2-2	0	4	4	1	1	4	0	1	0	0	0	4
13	Clara Strack	C	10:00	2-4	0-0	0-0	0	1	1	0	1	4	1	1	0	1	0	4
3	Georgia Amooore	G	10:00	1-4	0-2	0-0	0	0	0	0	1	2	3	2	0	0	1	4
10	Dazia Lawrence	G	10:00	2-3	0-0	0-2	1	1	2	1	2	4	0	0	0	0	1	4
Team							1	1	2		0		1					
Totals				7-13	0-2	2-4	3	8	11	5	6	16	4	7	0	2	2	4

Shooting By Period		
4 th FG%	7-13	53.8%
3PT%	0-2	0.0%
FT%	2-4	50%
GM FG%	7-13	53.8%
3PT%	0-2	0.0%
FT%	2-4	50.0%

Dead Ball Rebounds: 1, 0

Technical Fouls::NONE

	LOU	UKY
Biggest lead	5 (4 th 9:29)	2 (4 th 1:39)
Best Scoring Run	3(4 th 9:29)	4(4 th 8:37)
Lead Changes	1	
Times Tied	3	
Time with Lead	06:34	01:12

Points from	LOU	UKY
Turnovers	5	2
Paint	6	12
Second Chance	0	6
Fast Breaks	3	0
Bench	9	0

	Period by Period Scoring					
	1st	2nd	3rd	4th	OT1	TOT
LOU	15	15	16	12	3	61
UKY	16	11	15	16	13	71



Officials: Joseph Vaszily, Dee Kantner, Eric Brewton

Louisville - 28

NO.	Name	Min	FG			Rebounds			Fouls		TP	AS	TO	ST	Blocks		+/-
			M-A	M-A	M-A	OR	DR	TOT	PF	FD					BS	BA	
2	Nyla Harris	F 12:53	0-1	0-0	0-0	0	2	2	3	0	0	2	0	1	0	-8	
4	Mackently Randolph	F 06:22	2-2	0-0	0-0	0	0	0	0	0	4	0	0	0	0	-5	
44	Olivia Cochran	F 16:23	0-4	0-0	0-0	2	2	4	2	1	0	2	2	0	2	-6	
12	Ja'Leah Williams	G 17:14	0-2	0-0	1-2	0	1	1	3	1	1	2	2	0	1	-2	
22	Tajianna Roberts	G 14:27	2-3	0-0	1-4	0	1	1	1	3	5	0	1	0	0	-7	
1	Imari Berry	12:04	4-6	4-5	2-2	0	0	0	0	1	14	1	1	1	0	3	
11	Elif Istanbuluoglu	10:30	0-1	0-0	0-0	0	1	1	1	2	0	0	0	1	0	4	
13	Merissah Russell	10:00	2-3	0-1	0-0	0	1	1	1	0	4	1	0	1	0	4	
0	Izela Arenas	00:07	0-0	0-0	0-0	0	0	0	0	0	0	0	0	0	0	2	
Team						0	0	0		0		1					
Totals			10-22	4-6	4-8	2	8	10	11	8	28	6	9	3	4	2	-3

Shooting By Period		
3 rd FG%	6-9	66.7%
3PT%	3-3	100.0%
FT%	1-2	50%
4 th FG%	4-13	30.8%
3PT%	1-3	33.3%
FT%	3-6	50%
GM FG%	10-22	45.5%
3PT%	4-6	66.7%
FT%	4-8	50.0%

Dead Ball Rebounds: 3, 1

Technical Fouls::NONE

Kentucky - 31

NO.	Name	Min	FG			Rebounds			Fouls		TP	AS	TO	ST	Blocks		+/-
			M-A	M-A	M-A	OR	DR	TOT	PF	FD					BS	BA	
7	Teonni Key	F 16:41	2-4	0-0	1-2	2	2	4	3	2	5	0	3	0	1	0	1
32	Amelia Hassett	F 20:00	2-2	0-0	2-2	0	5	5	2	1	6	0	2	0	0	0	3
13	Clara Strack	C 20:00	2-5	0-0	0-0	0	1	1	1	1	4	1	1	0	1	0	3
3	Georgia Amooore	G 20:00	3-9	2-5	0-0	0	1	1	0	3	8	5	3	0	0	3	3
10	Dazia Lawrence	G 20:00	3-4	1-1	1-4	1	1	2	2	4	8	1	0	0	0	1	3
17	Clara Silva	03:19	0-0	0-0	0-0	0	0	0	0	0	0	0	0	0	0	0	2
Team						1	1	2		0		2					
Totals			12-24	3-6	4-8	4	11	15	8	11	31	7	11	0	2	4	3

Shooting By Period		
3 rd FG%	5-11	45.5%
3PT%	3-4	75.0%
FT%	2-4	50%
4 th FG%	7-13	53.8%
3PT%	0-2	0.0%
FT%	2-4	50%
GM FG%	12-24	50.0%
3PT%	3-6	50.0%
FT%	4-8	50.0%

Dead Ball Rebounds: 3, 0

Technical Fouls::NONE

	LOU	UKY
Biggest lead	7 (3 rd 1:08)	2 (3 rd 3:48)
Best Scoring Run	9(3 rd 1:08)	8(3 rd 3:48)
Lead Changes	3	
Times Tied	4	
Time with Lead	14:11	02:22

Points from	LOU	UKY
Turnovers	11	6
Paint	10	16
Second Chance	0	6
Fast Breaks	3	0
Bench	18	0

	Period by Period Scoring					
	1st	2nd	3rd	4th	OT1	TOT
LOU	15	15	16	12	3	61
UKY	16	11	15	16	13	71



Overtime 1

Quarter Starters:

UKY	3 Amoore G	7 Key T	10 Lawrence D	13 Strack C	32 Hassett A
LOU	2 Harris N	12 Williams J	13 Russell M	22 Roberts T	44 Cochran O

Game Time	UKY	Score	Diff	LOU
05:00	7 KEY T jumpball lost			44 COCHRAN O jumpball won
04:38				13 RUSSELL M 3pt FG , jump shot missed
04:36	13 STRACK C defensive rebound (9)			
04:14	32 HASSETT A 2pt FG outside the paint, jump shot missed			
04:10	7 KEY T offensive rebound (8)			
04:04	3 AMOORE G 2pt FG second chance outside the paint, jump shot missed			
04:02	offensive dead ball rebound (5)			
04:02	7 KEY T foul drawn (3)			13 RUSSELL M foul personal (3 - 7)
04:02	7 KEY T free throw 1 - 2 made (14)	59-58	1	
04:02	7 KEY T free throw 2 - 2 made (15)	60-58	2	
03:41				12 WILLIAMS J 2pt FG in the paint, layup blocked
03:41	13 STRACK C block (3)			
03:41				offensive rebound (27)
03:37				44 COCHRAN O turnover travel (5)
03:12	10 LAWRENCE D 3pt FG from turnover, jump shot missed			
03:10	offensive dead ball rebound (6)			
03:10	13 STRACK C foul drawn (2)			2 HARRIS N foul personal (4 - 8)
03:10	13 STRACK C free throw 1 - 2 made (11)	61-58	3	
03:10	13 STRACK C free throw 2 - 2 made (12)	62-58	4	
03:10				12 WILLIAMS J substitution out
03:10				1 BERRY I substitution in
02:48				44 COCHRAN O 2pt FG outside the paint, jump shot missed
02:47				offensive dead ball rebound (7)
02:47	3 AMOORE G foul personal (2 - 6)			2 HARRIS N foul drawn (3)
02:47				2 HARRIS N free throw 1 - 2 missed
02:47				offensive dead ball rebound (8)
02:47		62-59	3	2 HARRIS N free throw 2 - 2 made (5)
02:47				13 RUSSELL M substitution out
02:47				12 WILLIAMS J substitution in
02:33	3 AMOORE G turnover out of bounds (8)			
02:33				12 WILLIAMS J substitution out
02:33				13 RUSSELL M substitution in
02:13				2 HARRIS N 2pt FG from turnover in the paint, jump shot blocked
02:13	7 KEY T block (5)			
02:09	7 KEY T defensive rebound (9)			
01:57	32 HASSETT A foul drawn (4)			13 RUSSELL M foul personal (4 - 9)
01:57				13 RUSSELL M substitution out
01:57				12 WILLIAMS J substitution in
01:57	32 HASSETT A free throw 1 - 2 made (7)	63-59	4	
01:57	32 HASSETT A free throw 2 - 2 made (8)	64-59	5	
01:57				2 HARRIS N substitution out
01:57				0 ARENAS I substitution in



Official Basketball Play by Play - 1st OT
Louisville at Kentucky
 11/16/24 Historic Memorial Coliseum, Lexington, KY
 2024-25 Women's Basketball

Game Time: 6:00 PM
Game Duration: 2:11
Attendance: 6,117

Officials: Joseph Vaszily, Dee Kantner, Eric Brewton

Game Time	UKY	Score	Diff	LOU
01:43	10 LAWRENCE D foul personal (3 - 7)			22 ROBERTS T foul drawn (4)
01:43				0 ARENAS I substitution out
01:43				2 HARRIS N substitution in
01:43		64-60	4	22 ROBERTS T free throw 1 - 2 made (11)
01:43		64-61	3	22 ROBERTS T free throw 2 - 2 made (12)
01:12	13 STRACK C 2pt FG outside the paint, jump shot missed			
01:10				1 BERRY I defensive rebound (1)
01:09				Timeout 30 Sec
01:09				2 HARRIS N substitution out
01:09				44 COCHRAN O substitution out
01:09				0 ARENAS I substitution in
01:09				13 RUSSELL M substitution in
01:04				1 BERRY I turnover lost ball (2)
01:00	10 LAWRENCE D 2pt FG fast break from turnover in the paint, layup made (14)	66-61	5	
00:54				22 ROBERTS T 2pt FG in the paint, layup missed
00:52	32 HASSETT A defensive rebound (12)			
00:51	32 HASSETT A foul drawn (5)			13 RUSSELL M foul personal (5 - 10)
00:51				13 RUSSELL M substitution out
00:51				44 COCHRAN O substitution in
00:51	32 HASSETT A free throw 1 - 2 missed			
00:51	offensive dead ball rebound (7)			
00:51	32 HASSETT A free throw 2 - 2 made (9)	67-61	6	
00:44				44 COCHRAN O 3pt FG , jump shot missed
00:41	32 HASSETT A defensive rebound (13)			
00:30	3 AMOORE G foul drawn (6)			1 BERRY I foul personal (1 - 11)
00:30	3 AMOORE G free throw 1 - 2 made (18)	68-61	7	
00:30	3 AMOORE G free throw 2 - 2 made (19)	69-61	8	
00:30				Timeout 30 Sec
00:30				0 ARENAS I substitution out
00:30				2 HARRIS N substitution in
00:28	3 AMOORE G steal (2)			12 WILLIAMS J turnover bad pass (5)
00:25	7 KEY T 2pt FG fast break from turnover in the paint, layup made (17)	71-61	10	
00:25	10 LAWRENCE D assist (3)			
00:18				1 BERRY I turnover out of bounds (3)
END OF GAME				
UKY 71-61 LOU				



Officials: Joseph Vaszily, Dee Kantner, Eric Brewton

Louisville - 3

NO.	Name	Min	FG		3P		FT			Rebounds			Fouls		TP	AS	TO	ST	Blocks		+/-
			M-A	M-A	M-A	M-A	OR	DR	TOT	PF	FD	BS	BA								
2	Nyla Harris	F 04:08	0-1	0-0	1-2	0	0	0	1	1	1	0	0	0	0	0	0	0	0	1	-5
4	Mackeny Randolph	F 00:00	0-0	0-0	0-0	0	0	0	0	0	0	0	0	0	0	0	0	0	0	0	0
44	Olivia Cochran	F 04:43	0-2	0-1	0-0	0	0	0	0	0	0	0	1	0	0	0	0	0	0	-8	
12	Ja'Leah Williams	G 04:01	0-1	0-0	0-0	0	0	0	0	0	0	0	1	0	0	0	1	0	1	-11	
22	Tajianna Roberts	G 05:00	0-1	0-0	2-2	0	0	0	0	1	2	0	0	0	0	0	0	0	0	-10	
1	Imari Berry	03:10	0-0	0-0	0-0	0	1	1	1	0	0	0	2	0	0	0	0	0	-6		
13	Merissah Russell	03:06	0-1	0-1	0-0	0	0	0	3	0	0	0	0	0	0	0	0	0	-5		
0	Izela Arenas	00:53	0-0	0-0	0-0	0	0	0	0	0	0	0	0	0	0	0	0	0	-5		
Team										1	0	1		0		0					
Totals			0-6	0-2	3-4	1	1	2	5	2	3	0	4	0	0	2	0	2	-10		

Shooting By Period		
OT FG%	0-6	0.0%
3PT%	0-2	0.0%
FT%	3-4	75%
GM FG%	0-6	0.0%
3PT%	0-2	0.0%
FT%	3-4	75.0%

Dead Ball Rebounds: 2, 0

Technical Fouls::NONE

Kentucky - 13

NO.	Name	Min	FG		3P		FT			Rebounds			Fouls		TP	AS	TO	ST	Blocks		+/-
			M-A	M-A	M-A	M-A	OR	DR	TOT	PF	FD	BS	BA								
7	Teonni Key	F 05:00	1-1	0-0	2-2	1	1	2	0	1	4	0	0	0	0	1	0	10			
32	Amelia Hassett	F 05:00	0-1	0-0	3-4	0	2	2	0	2	3	0	0	0	0	0	10				
13	Clara Strack	C 05:00	0-1	0-0	2-2	0	1	1	0	1	2	0	0	0	1	0	10				
3	Georgia Amooore	G 05:00	0-1	0-0	2-2	0	0	0	1	1	2	0	1	1	0	0	10				
10	Dazia Lawrence	G 05:00	1-2	0-1	0-0	0	0	0	1	0	2	1	0	0	0	0	10				
Team										0	0	0		0							
Totals			2-6	0-1	9-10	1	4	5	2	5	13	1	1	1	1	2	0	10			

Shooting By Period		
OT FG%	2-6	33.3%
3PT%	0-1	0.0%
FT%	9-10	90%
GM FG%	2-6	33.3%
3PT%	0-1	0.0%
FT%	9-10	90.0%

Dead Ball Rebounds: 3, 0

Technical Fouls::NONE

	LOU	UKY
Biggest lead	0 (1 st 10:00)	10 (1 st OT 0:25)
Best Scoring Run	2 (1 st OT 1:43)	7 (1 st OT 0:25)
Lead Changes	1	
Times Tied	0	
Time with Lead	00:00	04:02

Points from	LOU	UKY
Turnovers	0	6
Paint	0	4
Second Chance	1	4
Fast Breaks	0	4
Bench	0	0

	Period by Period Scoring					
	1st	2nd	3rd	4th	OT1	TOT
LOU	15	15	16	12	3	61
UKY	16	11	15	16	13	71



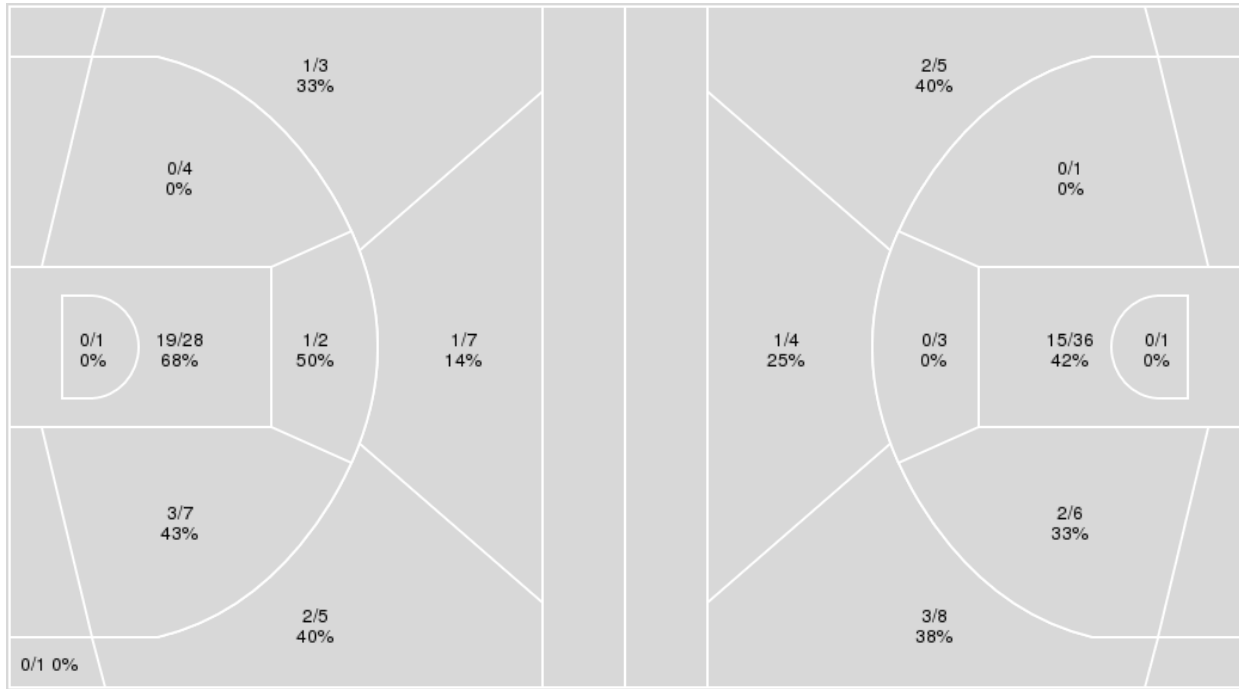
Officials: Joseph Vaszily, Dee Kantner, Eric Brewton

{ Players => 0, 2, 3, 4, 5, 7, 8, 10, 11, 12, 13, 17, 32; } FG Types => All;
 Results => All;

{ Players => 0, 1, 2, 4, 5, 9, 10, 11, 12, 13, 15, 21, 22, 30, 44; } FG
 Types => All; Results => All;

Kentucky

Louisville



Kentucky	M/A	%
Field Goals	27/58	47
2 Points	23/42	55
3 Points	4/16	25
Free Throws	13/18	72

Louisville	M/A	%
Field Goals	23/64	36
2 Points	17/47	36
3 Points	6/17	35
Free Throws	9/15	60



Louisville at Kentucky

11/16/24 Historic Memorial Coliseum, Lexington, KY
2024-25 Women's Basketball

Game Time: 6:00 PM
Game Duration: 2:11
Attendance: 6,117

Officials: Joseph Vaszily, Dee Kantner, Eric Brewton

Louisville

No	Name	Mins		Score		Points Diff		Points per Min		Assists		Rebounds		Steals		Turnovers	
		On	Off	On	Off	On	Off	On	Off	On	Off	On	Off	On	Off	On	Off
0	Izela Arenas	02:42	42:18	4 - 7	57 - 64	-3	-7	1.48	1.35	1	13	0	28	0	5	2	17
1	Imari Berry	19:52	25:08	32 - 29	29 - 42	3	-13	1.61	1.15	8	6	11	17	2	3	8	11
2	Nyla Harris	34:07	10:53	40 - 49	21 - 22	-9	-1	1.17	1.93	8	6	22	6	4	1	15	4
4	Mackenly Randolph	14:34	30:26	14 - 25	47 - 46	-11	1	0.96	1.54	2	12	8	20	0	5	5	14
11	Elif Istanbuluoglu	16:33	28:27	30 - 23	31 - 48	7	-17	1.81	1.09	8	6	9	19	2	3	6	13
12	Ja'Leah Williams	39:33	05:27	52 - 62	9 - 9	-10	0	1.31	1.65	13	1	27	1	5	0	17	2
13	Merissah Russell	24:55	20:06	43 - 35	18 - 36	8	-18	1.73	0.90	11	3	17	11	4	1	11	8
22	Tajianna Roberts	34:49	10:11	42 - 62	19 - 9	-20	10	1.21	1.87	9	5	21	7	4	1	16	3
44	Olivia Cochran	37:55	07:05	48 - 63	13 - 8	-15	5	1.27	1.84	10	4	25	3	4	1	15	4

Kentucky

No	Name	Mins		Score		Points Diff		Points per Min		Assists		Rebounds		Steals		Turnovers	
		On	Off	On	Off	On	Off	On	Off	On	Off	On	Off	On	Off	On	Off
3	Georgia Amoore	45:00	00:00	71 - 61	0 - 0	10	0	1.58	0.00	17	0	40	0	2	0	24	0
4	Lexi Blue	02:18	42:42	0 - 6	71 - 55	-6	16	0.00	1.66	0	17	2	38	0	2	2	22
5	Cassidy Rowe	01:42	43:18	2 - 2	69 - 59	0	10	1.18	1.59	0	17	1	39	0	2	2	22
7	Teonni Key	38:04	06:56	59 - 53	12 - 8	6	4	1.55	1.73	15	2	37	3	2	0	20	4
10	Dazia Lawrence	42:42	02:18	71 - 55	0 - 6	16	-6	1.66	0.00	17	0	38	2	2	0	22	2
13	Clara Strack	43:38	01:22	71 - 57	0 - 4	14	-4	1.63	0.00	17	0	39	1	2	0	23	1
17	Clara Silva	08:18	36:42	12 - 12	59 - 49	0	10	1.45	1.61	2	15	4	36	0	2	5	19
32	Amelia Hassett	43:18	01:42	69 - 59	2 - 2	10	0	1.59	1.18	17	0	39	1	2	0	22	2

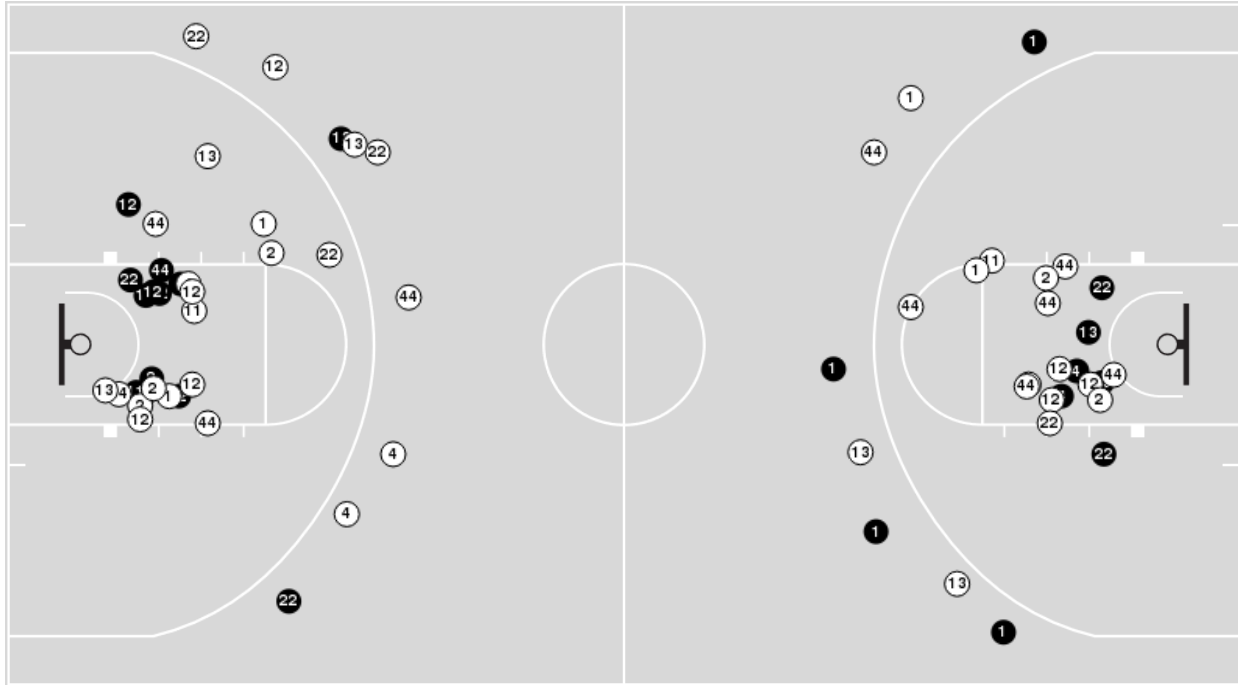


Officials: Joseph Vaszily, Dee Kantner, Eric Brewton

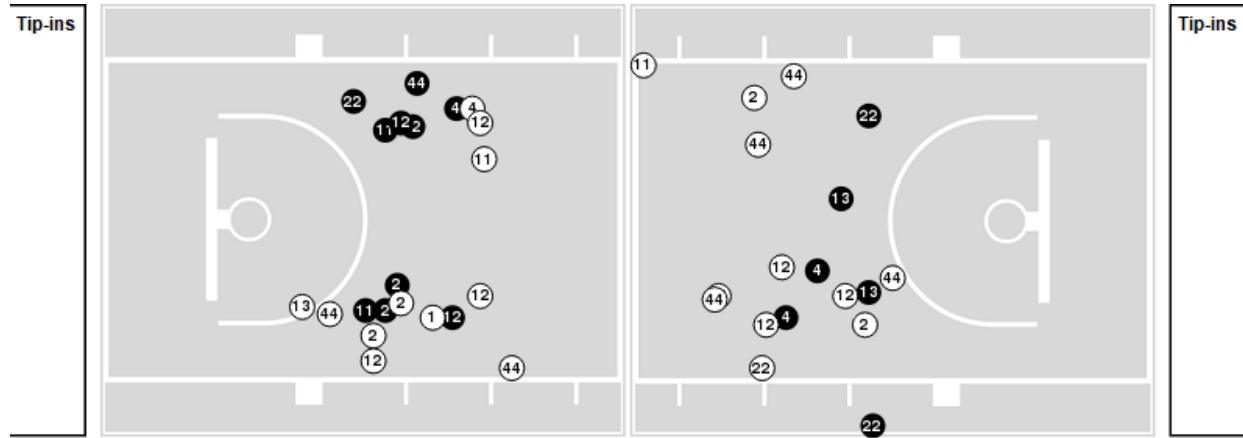
Players => 0, 1, 2, 4, 5, 9, 10, 11, 12, 13, 15, 21, 22, 30, 44 FG Types=>AllResults=>All

Louisville

All Field Goals



Blow Up Chart



● Made ○ Missed N - Player Number

Louisville	M/A	%
Field Goals	23/64	36
2 Points	17/47	36
3 Points	6/17	35
Free Throws	9/15	60

Louisville	M/A	%
Points in the Paint	30 (15 / 37)	41
Fast Break Points	9 (5/7)	71
Second Chance Points	3 (2/9)	22
Effective FG%	41	

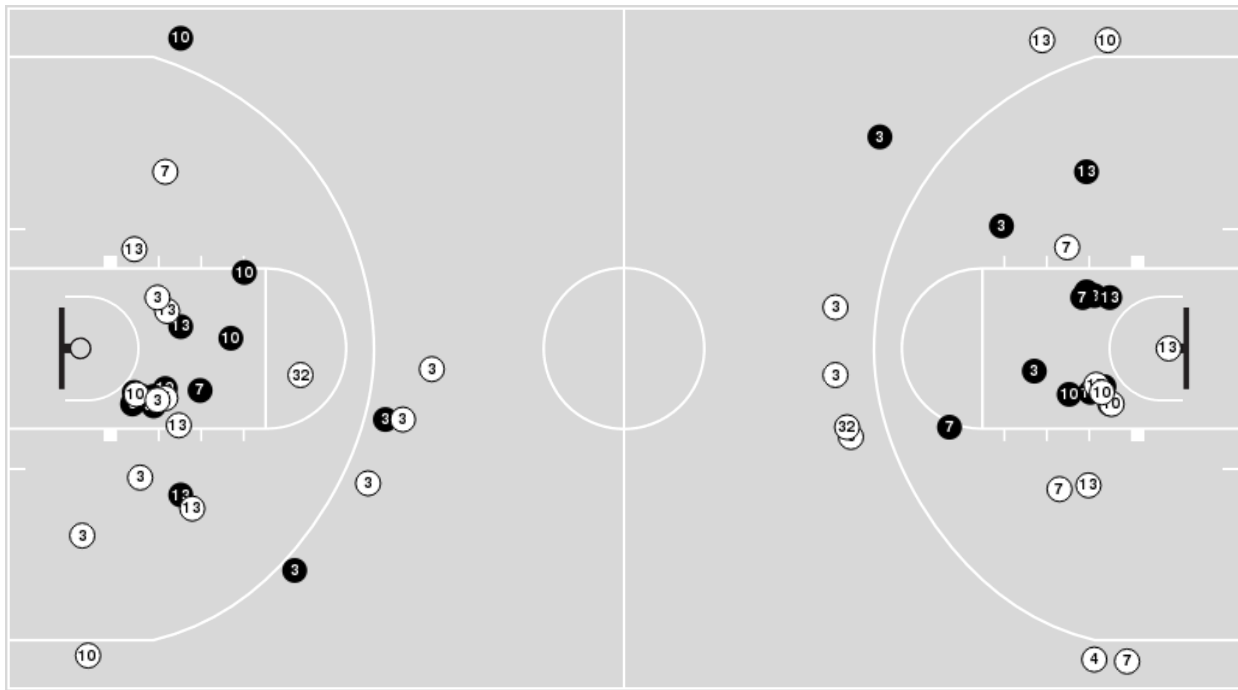


Officials: Joseph Vaszily, Dee Kantner, Eric Brewton

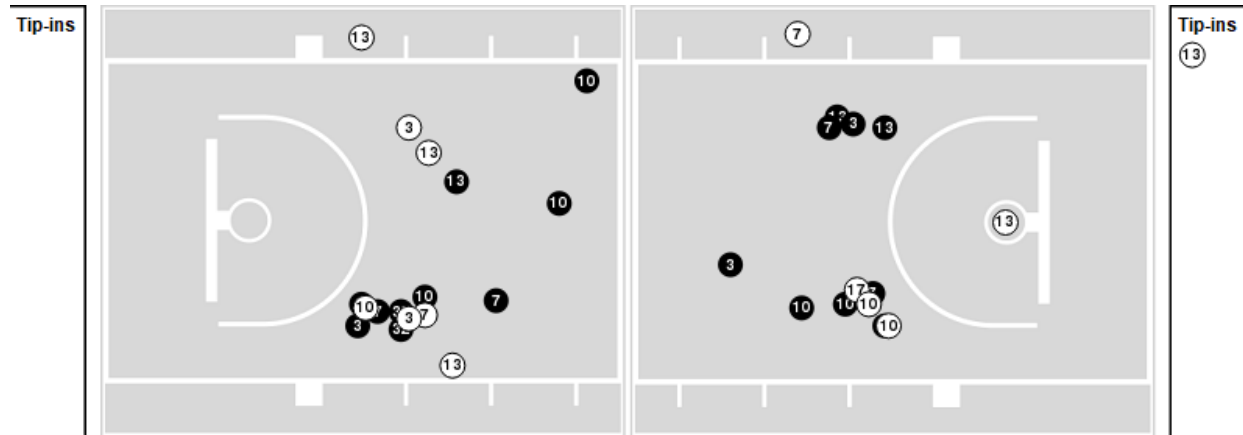
Players => 0, 2, 3, 4, 5, 7, 8, 10, 11, 12, 13, 17, 32FG Types=>AllResults=>All

Kentucky

All Field Goals



Blow Up Chart



● Made ○ Missed N - Player Number

Kentucky	M/A	%
Field Goals	27/58	47
2 Points	23/42	55
3 Points	4/16	25
Free Throws	13/18	72

Kentucky	M/A	%
Points in the Paint	38 (19 / 29)	66
Fast Break Points	4 (2/2)	100
Second Chance Points	10 (8/14)	57
Effective FG%	50	



Officials: Joseph Vaszily, Dee Kantner, Eric Brewton

Louisville

Lineup	Quarter On	Time On	Quarter Off	Time Off	Time on Court	Score	Score Diff	Reb	Stl	Tov	Ass	PPP
2- Harris N/ 4- Randolph M/ 12- Williams J/ 22- Roberts T/ 44- Cochran O/	1	10:00	1	05:50	04:10	4-10	-6	3	0	0	0	0.5814
2- Harris N/ 12- Williams J/ 13- Russell M/ 22- Roberts T/ 44- Cochran O/	1	05:50	1	01:42	04:08	9-4	5	3	2	3	2	1.1250
1- Berry I/ 2- Harris N/ 11- Istanbuluoglu E/ 12- Williams J/ 13- Russell M/	1	01:42	1	01:42	00:00	0-0	0	0	0	0	0	0.0000
0- Arenas I/ 1- Berry I/ 2- Harris N/ 11- Istanbuluoglu E/ 13- Russell M/	1	01:42	2	10:00	01:42	2-2	0	0	0	1	0	0.5000
1- Berry I/ 2- Harris N/ 11- Istanbuluoglu E/ 12- Williams J/ 13- Russell M/	2	10:00	2	08:32	01:28	4-0	4	2	0	0	2	1.1628
1- Berry I/ 11- Istanbuluoglu E/ 12- Williams J/ 13- Russell M/ 44- Cochran O/	2	08:32	2	07:04	01:28	2-0	2	0	0	0	0	1.0000
11- Istanbuluoglu E/ 12- Williams J/ 13- Russell M/ 22- Roberts T/ 44- Cochran O/	2	07:04	2	05:41	01:23	2-5	-3	1	0	1	1	0.6667
4- Randolph M/ 11- Istanbuluoglu E/ 12- Williams J/ 22- Roberts T/ 44- Cochran O/	2	05:41	2	05:39	00:02	0-0	0	0	0	0	0	0.0000
2- Harris N/ 4- Randolph M/ 12- Williams J/ 22- Roberts T/ 44- Cochran O/	2	05:39	2	01:39	04:00	4-4	0	4	0	1	2	0.5714
2- Harris N/ 12- Williams J/ 13- Russell M/ 22- Roberts T/ 44- Cochran O/	2	01:39	3	10:00	01:39	3-2	1	3	0	0	1	1.0000
2- Harris N/ 4- Randolph M/ 12- Williams J/ 22- Roberts T/ 44- Cochran O/	3	10:00	3	03:38	06:22	6-11	-5	1	0	4	0	0.6667
1- Berry I/ 11- Istanbuluoglu E/ 12- Williams J/ 13- Russell M/ 44- Cochran O/	3	03:38	3	01:29	02:09	7-1	6	2	1	0	2	1.8041
1- Berry I/ 11- Istanbuluoglu E/ 13- Russell M/ 22- Roberts T/ 44- Cochran O/	3	01:29	4	08:43	02:46	6-7	-1	1	0	1	1	1.5000
1- Berry I/ 11- Istanbuluoglu E/ 12- Williams J/ 13- Russell M/ 44- Cochran O/	4	08:43	4	06:38	02:05	2-4	-2	2	0	1	1	0.6667
1- Berry I/ 2- Harris N/ 11- Istanbuluoglu E/ 12- Williams J/ 13- Russell M/	4	06:38	4	05:19	01:19	2-2	0	1	0	1	0	0.6944
2- Harris N/ 11- Istanbuluoglu E/ 12- Williams J/ 13- Russell M/ 22- Roberts T/	4	05:19	4	04:12	01:07	1-2	-1	0	1	1	0	0.5319
1- Berry I/ 2- Harris N/ 11- Istanbuluoglu E/ 12- Williams J/ 22- Roberts T/	4	04:12	4	03:08	01:04	2-0	2	0	0	0	1	1.0638
1- Berry I/ 2- Harris N/ 12- Williams J/ 22- Roberts T/ 44- Cochran O/	4	03:08	4	00:34	02:33	0-4	-4	2	1	1	0	0.0000
0- Arenas I/ 1- Berry I/ 12- Williams J/ 13- Russell M/ 22- Roberts T/	4	00:34	4	00:26	00:07	2-0	2	0	0	0	1	2.0000
2- Harris N/ 12- Williams J/ 13- Russell M/ 22- Roberts T/ 44- Cochran O/	4	00:26	OT1	03:10	02:16	0-4	-4	2	0	1	0	0.0000
1- Berry I/ 2- Harris N/ 13- Russell M/ 22- Roberts T/ 44- Cochran O/	OT1	03:10	OT1	02:47	00:23	1-0	1	0	0	0	0	0.5319
1- Berry I/ 2- Harris N/ 12- Williams J/ 22- Roberts T/ 44- Cochran O/	OT1	02:47	OT1	02:33	00:14	0-0	0	0	0	0	0	0.0000
1- Berry I/ 2- Harris N/ 13- Russell M/ 22- Roberts T/ 44- Cochran O/	OT1	02:33	OT1	01:57	00:36	0-0	0	0	0	0	0	0.0000
1- Berry I/ 2- Harris N/ 12- Williams J/ 22- Roberts T/ 44- Cochran O/	OT1	01:57	OT1	01:57	00:00	0-2	-2	0	0	0	0	0.0000
0- Arenas I/ 1- Berry I/ 12- Williams J/ 22- Roberts T/ 44- Cochran O/	OT1	01:57	OT1	01:43	00:14	0-0	0	0	0	0	0	0.0000
1- Berry I/ 2- Harris N/ 12- Williams J/ 22- Roberts T/ 44- Cochran O/	OT1	01:43	OT1	01:09	00:34	2-0	2	1	0	0	0	2.2727
0- Arenas I/ 1- Berry I/ 12- Williams J/ 13- Russell M/ 22- Roberts T/	OT1	01:09	OT1	00:51	00:17	0-2	-2	0	0	1	0	0.0000
0- Arenas I/ 1- Berry I/ 12- Williams J/ 22- Roberts T/ 44- Cochran O/	OT1	00:51	OT1	00:30	00:21	0-3	-3	0	0	0	0	0.0000
1- Berry I/ 2- Harris N/ 12- Williams J/ 22- Roberts T/ 44- Cochran O/	OT1	00:30	OT1	00:00	00:30	0-2	-2	0	0	2	0	0.0000



Officials: Joseph Vaszily, Dee Kantner, Eric Brewton

Kentucky

Lineup	Quarter On	Time On	Quarter Off	Time Off	Time on Court	Score	Score Diff	Reb	Stl	Tov	Ass	PPP
3- Amooore G/ 7- Key T/ 10- Lawrence D/ 13- Strack C/ 32- Hassett A/	1	10:00	1	03:37	06:23	10-11	-1	7	0	4	4	0.9091
3- Amooore G/ 10- Lawrence D/ 13- Strack C/ 17- Silva C/ 32- Hassett A/	1	03:37	1	01:42	01:55	4-2	2	0	0	1	1	1.0000
3- Amooore G/ 5- Rowe C/ 10- Lawrence D/ 13- Strack C/ 17- Silva C/	1	01:42	2	10:00	01:42	2-2	0	1	0	2	0	0.6667
3- Amooore G/ 4- Blue L/ 7- Key T/ 17- Silva C/ 32- Hassett A/	2	10:00	2	08:38	01:22	0-4	-4	1	0	1	0	0.0000
3- Amooore G/ 4- Blue L/ 7- Key T/ 13- Strack C/ 32- Hassett A/	2	08:38	2	07:42	00:56	0-2	-2	1	0	1	0	0.0000
3- Amooore G/ 7- Key T/ 10- Lawrence D/ 13- Strack C/ 32- Hassett A/	2	07:42	3	05:19	12:23	17-15	2	12	1	5	6	0.8142
3- Amooore G/ 10- Lawrence D/ 13- Strack C/ 17- Silva C/ 32- Hassett A/	3	05:19	3	02:00	03:19	6-4	2	2	0	1	1	1.2295
3- Amooore G/ 7- Key T/ 10- Lawrence D/ 13- Strack C/ 32- Hassett A/	3	02:00	OT1	00:00	17:00	32-21	11	16	1	9	5	0.9950



Officials: Joseph Vaszily, Dee Kantner, Eric Brewton

Louisville

Lineup	Time	Score	Score Diff	Pts/Min	Reb	Stl	Tov	Ass	PPP
2- Harris N/ 4- Randolph M/ 12- Williams J/ 22- Roberts T/ 44- Cochran O/	14:32	14-25	-11	0.9633	8	0	5	2	0.6119
2- Harris N/ 12- Williams J/ 13- Russell M/ 22- Roberts T/ 44- Cochran O/	08:03	12-10	2	1.4882	8	2	4	3	0.9231
1- Berry I/ 11- Istanbuluoglu E/ 12- Williams J/ 13- Russell M/ 44- Cochran O/	05:42	11-5	6	1.9298	4	1	1	3	1.2387
1- Berry I/ 2- Harris N/ 12- Williams J/ 22- Roberts T/ 44- Cochran O/	03:52	2-8	-6	0.5166	3	1	3	0	0.2538
1- Berry I/ 2- Harris N/ 11- Istanbuluoglu E/ 12- Williams J/ 13- Russell M/	02:47	6-2	4	2.1557	3	0	1	2	0.9494
1- Berry I/ 11- Istanbuluoglu E/ 13- Russell M/ 22- Roberts T/ 44- Cochran O/	02:46	6-7	-1	2.1687	1	0	1	1	1.5000
0- Arenas I/ 1- Berry I/ 2- Harris N/ 11- Istanbuluoglu E/ 13- Russell M/	01:42	2-2	0	1.1765	0	0	1	0	0.5000
11- Istanbuluoglu E/ 12- Williams J/ 13- Russell M/ 22- Roberts T/ 44- Cochran O/	01:23	2-5	-3	1.4458	1	0	1	1	0.6667
2- Harris N/ 11- Istanbuluoglu E/ 12- Williams J/ 13- Russell M/ 22- Roberts T/	01:07	1-2	-1	0.8955	0	1	1	0	0.5319
1- Berry I/ 2- Harris N/ 11- Istanbuluoglu E/ 12- Williams J/ 22- Roberts T/	01:04	2-0	2	1.8750	0	0	0	1	1.0638
1- Berry I/ 2- Harris N/ 13- Russell M/ 22- Roberts T/ 44- Cochran O/	00:59	1-0	1	1.0169	0	0	0	0	0.3472
0- Arenas I/ 1- Berry I/ 12- Williams J/ 22- Roberts T/ 44- Cochran O/	00:35	0-3	-3	0.0000	0	0	0	0	0.0000
0- Arenas I/ 1- Berry I/ 12- Williams J/ 13- Russell M/ 22- Roberts T/	00:24	2-2	0	4.8583	0	0	1	1	0.6667
4- Randolph M/ 11- Istanbuluoglu E/ 12- Williams J/ 22- Roberts T/ 44- Cochran O/	00:02	0-0	0	0.0000	0	0	0	0	0.0000



Louisville at Kentucky

11/16/24 Historic Memorial Coliseum, Lexington, KY
2024-25 Women's Basketball

Officials: Joseph Vaszily, Dee Kantner, Eric Brewton

Kentucky

Lineup	Time	Score	Score Diff	Pts/Min	Reb	Stl	Tov	Ass	PPP
3- Amoores G/ 7- Key T/ 10- Lawrence D/ 13- Strack C/ 32- Hassett A/	35:46	59-47	12	1.6496	35	2	18	15	0.9213
3- Amoores G/ 10- Lawrence D/ 13- Strack C/ 17- Silva C/ 32- Hassett A/	05:14	10-6	4	1.9108	2	0	2	2	1.1261
3- Amoores G/ 5- Rowe C/ 10- Lawrence D/ 13- Strack C/ 17- Silva C/	01:42	2-2	0	1.1765	1	0	2	0	0.6667
3- Amoores G/ 4- Blue L/ 7- Key T/ 17- Silva C/ 32- Hassett A/	01:22	0-4	-4	0.0000	1	0	1	0	0.0000
3- Amoores G/ 4- Blue L/ 7- Key T/ 13- Strack C/ 32- Hassett A/	00:56	0-2	-2	0.0000	1	0	1	0	0.0000