



Officials: Natasha Camy, Nykeshia Thompson, Charles Watson

Queens (NC) - 45

Record: 5-4

NO.	Name	Min	FG			Rebounds			Fouls		TP	AS	TO	ST	Blocks		+/-
			M-A	M-A	M-A	OR	DR	TOT	PF	FD					BS	BA	
0	Jordyn Weaver	F 27:11	3-7	0-0	5-6	0	5	5	1	4	11	0	3	1	1	1	-38
32	Kemia Ward	F 10:50	0-0	0-0	0-0	0	1	1	4	0	0	0	1	0	0	0	4
6	Magda Freire	G 15:55	0-3	0-1	0-0	0	0	0	4	1	0	0	1	0	0	0	-13
10	Ana Barreto	G 31:46	4-14	2-9	0-0	0	1	1	1	0	10	0	3	2	0	0	-35
12	Aylesha Wade	G 20:57	1-8	0-2	3-4	1	2	3	3	3	5	1	2	2	0	0	-13
8	Tamar Kopilevech	28:37	1-6	0-1	1-2	2	4	6	2	2	3	3	2	0	0	1	-46
3	Jermamy Mapp	16:50	2-8	0-1	0-0	2	3	5	2	0	4	1	3	1	0	2	-17
22	Dayuna Colvin	20:26	1-5	0-1	2-4	1	3	4	2	2	4	1	1	0	0	2	-34
24	Tiziana Huici	05:35	0-0	0-0	0-0	0	0	0	0	0	0	1	2	1	0	0	-1
4	Kaitlyn Adams	07:18	3-3	0-0	2-4	0	3	3	2	2	8	0	0	0	0	0	-3
1	Alyssa Lewis	10:02	0-2	0-1	0-0	0	1	1	0	0	0	0	0	0	0	0	-6
11	Kamara Mills	04:33	0-1	0-1	0-0	0	0	0	0	0	0	0	1	0	0	0	-8
Team						4	1	5			0		0				
<b>Totals</b>			15-57	2-17	13-20	10	24	34	21	14	45	7	19	7	1	6	-42

Shooting By Period		
1 <sup>st</sup> FG%	4-16	25.0%
3PT%	0-3	0.0%
FT%	1-4	25%
2 <sup>nd</sup> FG%	3-15	20.0%
3PT%	0-4	0.0%
FT%	3-4	75%
3 <sup>rd</sup> FG%	3-16	18.8%
3PT%	1-7	14.3%
FT%	4-6	66.7%
4 <sup>th</sup> FG%	5-10	50.0%
3PT%	1-3	33.3%
FT%	5-6	83.3%
GM FG%	15-57	26.3%
3PT%	2-17	11.8%
FT%	13-20	65.0%

Technical Fouls::NONE

Dead Ball Rebounds: 7, 0

Kentucky - 87

Record: 8-1

NO.	Name	Min	FG			Rebounds			Fouls		TP	AS	TO	ST	Blocks		+/-
			M-A	M-A	M-A	OR	DR	TOT	PF	FD					BS	BA	
7	Teonni Key	F 25:49	4-8	0-0	4-4	7	6	13	2	5	12	4	3	1	1	1	31
32	Amelia Hassett	F 28:43	7-14	3-9	2-2	0	6	6	3	1	19	3	2	1	1	0	34
13	Clara Strack	C 26:08	7-14	0-4	2-2	2	4	6	0	4	16	2	3	2	2	0	32
3	Georgia Amooore	G 22:57	5-12	3-7	7-8	0	1	1	2	5	20	4	2	0	1	0	30
10	Dazia Lawrence	G 25:33	3-4	1-1	0-0	0	5	5	1	1	7	5	0	0	0	0	30
4	Lexi Blue	21:04	2-4	0-2	2-2	0	3	3	0	1	6	1	1	0	1	0	18
5	Cassidy Rowe	13:47	0-3	0-3	0-0	0	2	2	1	1	0	2	1	0	0	0	17
17	Clara Silva	14:19	1-7	0-0	2-2	3	1	4	3	1	4	1	3	0	0	0	19
2	Saniah Tyler	11:48	1-3	1-3	0-0	0	1	1	0	1	3	2	0	0	0	0	-7
11	Gabby Brooks	05:10	0-0	0-0	0-0	0	0	0	0	1	0	0	0	0	0	0	2
8	Tanah Becker	04:42	0-1	0-1	0-0	1	0	1	2	0	0	0	0	1	0	0	4
Team						2	2	4			0		0				
<b>Totals</b>			30-70	8-30	19-20	15	31	46	14	21	87	24	15	5	6	1	42

Shooting By Period		
1 <sup>st</sup> FG%	10-20	50.0%
3PT%	4-8	50.0%
FT%	5-5	100%
2 <sup>nd</sup> FG%	9-19	47.4%
3PT%	2-9	22.2%
FT%	3-3	100%
3 <sup>rd</sup> FG%	6-14	42.9%
3PT%	1-5	20.0%
FT%	11-12	91.7%
4 <sup>th</sup> FG%	5-17	29.4%
3PT%	1-8	12.5%
FT%	0-0	0%
GM FG%	30-70	42.9%
3PT%	8-30	26.7%
FT%	19-20	95.0%

Technical Fouls::NONE

Dead Ball Rebounds: 2, 1

	QNS	UKY
Biggest lead	0 (1 <sup>st</sup> 10:00)	51 (4 <sup>th</sup> 7:46)
Best Scoring Run	8(4 <sup>th</sup> 1:07)	12(1 <sup>st</sup> 3:42)
Lead Changes	0	
Times Tied	0	
Time with Lead	00:00	39:08

	QNS	UKY
Points from		
Turnovers	14	14
Paint	22	32
Second Chance	2	13
Fast Breaks	6	12
Bench	19	13

	Period by Period Scoring				
	1st	2nd	3rd	4th	TOT
QNS	9	9	11	16	45
UKY	29	23	24	11	87



**Officials:** Natasha Camy, Nykeshia Thompson, Charles Watson

**Period 1**

**Quarter Starters:**

<b>UKY</b>	3 Amooore G	7 Key T	10 Lawrence D	13 Strack C	32 Hassett A
<b>QNS</b>	0 Weaver J	6 Freire M	10 Barreto A	12 Wade A	32 Ward K

Game Time	UKY	Score	Diff	QNS
10:00	7 KEY T jumpball won			32 WARD K jumpball lost
09:46	3 AMOORE G 3pt FG , step back jump shot missed			
09:40	7 KEY T offensive rebound (1)			
09:40	7 KEY T 2pt FG second chance in the paint, tip-in layup missed			
09:39	7 KEY T offensive rebound (2)			
09:39	7 KEY T 2pt FG second chance in the paint, jump shot blocked			
09:39				0 WEAVER J block (1)
09:39				0 WEAVER J defensive rebound (1)
09:39	jump ball situation			
09:23				12 WADE A 2pt FG outside the paint, jump shot missed
09:23	defensive dead ball rebound (1)			
09:23	13 STRACK C foul drawn (1)			32 WARD K foul personal (1 - 1)
09:08	32 HASSETT A 2pt FG outside the paint, jump shot made (2)	<b>2-0</b>	<b>2</b>	
09:08	10 LAWRENCE D assist (1)			
08:46				6 FREIRE M 2pt FG in the paint, layup missed
08:44	13 STRACK C defensive rebound (1)			
08:31	7 KEY T 2pt FG in the paint, layup made (2)	<b>4-0</b>	<b>4</b>	
08:31	13 STRACK C assist (1)			
08:15				10 BARRETO A turnover travel (1)
08:02	7 KEY T foul drawn (1)			10 BARRETO A foul personal (1 - 2)
07:57	3 AMOORE G 2pt FG from turnover outside the paint, jump shot missed			
07:53				12 WADE A defensive rebound (1)
07:52				6 FREIRE M turnover lost ball (1)
07:39	13 STRACK C 2pt FG in the paint, jump shot missed			
07:36				0 WEAVER J defensive rebound (2)
07:23		<b>4-2</b>	<b>2</b>	10 BARRETO A 2pt FG in the paint, jump shot made (2)
07:06	32 HASSETT A 3pt FG , jump shot made (5)	<b>7-2</b>	<b>5</b>	
07:06	3 AMOORE G assist (1)			
06:44				10 BARRETO A 3pt FG , jump shot missed
06:42				offensive rebound (4)
06:42	13 STRACK C foul drawn (2)			32 WARD K foul offensive (2 - 3)
06:42				32 WARD K turnover offensive (1)
06:42				32 WARD K substitution out
06:42				8 KOPILEVECH T substitution in
06:20	32 HASSETT A 2pt FG from turnover in the paint, layup missed			
06:18				0 WEAVER J defensive rebound (3)
06:13				12 WADE A 2pt FG outside the paint, pull up jump shot missed
06:10	7 KEY T defensive rebound (3)			
05:52	13 STRACK C 2pt FG in the paint, turnaround jump shot made (2)	<b>9-2</b>	<b>7</b>	
05:52	3 AMOORE G assist (2)			
05:35				10 BARRETO A 3pt FG , jump shot missed
05:32	10 LAWRENCE D defensive rebound (1)			



**Officials:** Natasha Camy, Nykeshia Thompson, Charles Watson

Game Time	UKY	Score	Diff	QNS
05:21	3 AMOORE G 3pt FG , jump shot made (3)	<b>12-2</b>	<b>10</b>	
05:21	7 KEY T assist (1)			
05:11	3 AMOORE G foul drawn (1)			12 WADE A foul offensive (1 - 4)
05:11				12 WADE A turnover offensive (1)
05:11	3 AMOORE G substitution out			
05:11	7 KEY T substitution out			
05:11	4 BLUE L substitution in			
05:11	5 ROWE C substitution in			
05:11				0 WEAVER J substitution out
05:11				6 FREIRE M substitution out
05:11				3 MAPP J substitution in
05:11				22 COLVIN D substitution in
04:55	13 STRACK C 2pt FG from turnover in the paint, layup made (4)	<b>14-2</b>	<b>12</b>	
04:55	10 LAWRENCE D assist (2)			
04:41				10 BARRETO A 2pt FG in the paint, jump shot missed
04:39	32 HASSETT A defensive rebound (1)			
04:24	32 HASSETT A 3pt FG , jump shot missed			
04:21				22 COLVIN D defensive rebound (1)
04:15	5 ROWE C foul shooting (1 - 1)			22 COLVIN D foul drawn (1)
04:15	Timeout media			
04:15	10 LAWRENCE D substitution out			
04:15	13 STRACK C substitution out			
04:15	3 AMOORE G substitution in			
04:15	7 KEY T substitution in			
04:15				22 COLVIN D free throw 1 - 2 missed
04:15				offensive dead ball rebound (1)
04:15				22 COLVIN D free throw 2 - 2 missed
04:13	defensive rebound (7)			
04:00	3 AMOORE G turnover travel (1)			
03:42				3 MAPP J 2pt FG from turnover in the paint, layup blocked
03:42	32 HASSETT A block (1)			
03:42				8 KOPILEVECH T offensive rebound (1)
03:42				8 KOPILEVECH T 2pt FG from turnover second chance in the paint, tip-in layup blocked
03:42	4 BLUE L block (1)			
03:42	4 BLUE L defensive rebound (1)			
03:42	4 BLUE L foul drawn (1)			22 COLVIN D foul personal (1 - 5)
03:42	4 BLUE L free throw fast break 1 - 2 made (1)	<b>15-2</b>	<b>13</b>	
03:42	4 BLUE L free throw fast break 2 - 2 made (2)	<b>16-2</b>	<b>14</b>	
03:37				12 WADE A 2pt FG in the paint, jump shot missed
03:34	32 HASSETT A defensive rebound (2)			
03:31	32 HASSETT A 3pt FG , jump shot missed			
03:28				8 KOPILEVECH T defensive rebound (2)
03:16	7 KEY T foul shooting (1 - 2)			8 KOPILEVECH T foul drawn (1)
03:16	32 HASSETT A substitution out			
03:16	13 STRACK C substitution in			
03:16	5 ROWE C substitution out			
03:16	10 LAWRENCE D substitution in			
03:16				12 WADE A substitution out



Official Basketball Play by Play - 1st Period  
**Queens (NC) at Kentucky**  
 12/09/24 Historic Memorial Coliseum, Lexington, KY  
 2024-25 Women's Basketball

**Game Time:** 6:00 PM  
**Game Duration:** 1:46  
**Attendance:** 4,193

**Officials:** Natasha Camy, Nykeshia Thompson, Charles Watson

Game Time	UKY	Score	Diff	QNS
03:16				6 FREIRE M substitution in
03:16				8 KOPILEVECH T free throw 1 - 2 missed
03:16				offensive dead ball rebound (2)
03:16		<b>16-3</b>	<b>13</b>	8 KOPILEVECH T free throw 2 - 2 made (1)
03:04	13 STRACK C turnover 3 seconds (1)			
02:52		<b>16-5</b>	<b>11</b>	8 KOPILEVECH T 2pt FG from turnover in the paint, jump shot made (3)
02:52				22 COLVIN D assist (1)
02:43	3 AMOORE G 2pt FG in the paint, layup made (5)	<b>18-5</b>	<b>13</b>	
02:43	3 AMOORE G foul drawn (2)			6 FREIRE M foul shooting (1 - 6)
02:43	3 AMOORE G free throw 1 - 1 made (6)	<b>19-5</b>	<b>14</b>	
02:33				22 COLVIN D 2pt FG in the paint, layup blocked
02:33	3 AMOORE G block (1)			
02:32				offensive rebound (9)
02:23				3 MAPP J 2pt FG second chance in the paint, layup missed
02:20	4 BLUE L defensive rebound (2)			
02:02	7 KEY T 2pt FG outside the paint, jump shot made (4)	<b>21-5</b>	<b>16</b>	
02:02	4 BLUE L assist (1)			
01:36	13 STRACK C steal (1)			3 MAPP J turnover bad pass (1)
01:29	3 AMOORE G 3pt FG from turnover, jump shot made (9)	<b>24-5</b>	<b>19</b>	
01:29	7 KEY T assist (2)			
01:09				6 FREIRE M 3pt FG , jump shot missed
01:06	7 KEY T defensive rebound (4)			
01:06	7 KEY T turnover lost ball (1)			10 BARRETO A steal (1)
01:02		<b>24-7</b>	<b>17</b>	10 BARRETO A 2pt FG from turnover in the paint, layup made (4)
00:48	10 LAWRENCE D 3pt FG , jump shot made (3)	<b>27-7</b>	<b>20</b>	
00:48	13 STRACK C assist (2)			
00:27		<b>27-9</b>	<b>18</b>	3 MAPP J 2pt FG outside the paint, jump shot made (2)
00:27				8 KOPILEVECH T assist (1)
00:04	4 BLUE L 3pt FG , jump shot missed			
00:01	7 KEY T offensive rebound (5)			
00:01	7 KEY T 2pt FG second chance in the paint, tip-in layup missed			
00:01	offensive dead ball rebound (2)			
00:01	13 STRACK C foul drawn (3)			3 MAPP J foul shooting (1 - 7)
00:01				3 MAPP J substitution out
00:01				0 WEAVER J substitution in
00:01	13 STRACK C free throw 1 - 2 made (5)	<b>28-9</b>	<b>19</b>	
00:01	13 STRACK C free throw 2 - 2 made (6)	<b>29-9</b>	<b>20</b>	
<b>END OF PERIOD</b>				
<b>UKY 29-9 QNS</b>				



**Officials:** Natasha Camy, Nykeshia Thompson, Charles Watson

**Queens (NC) - 9**

NO.	Name	F	Min	FG	3P	FT	Rebounds			Fouls		TP	AS	TO	ST	Blocks		+/-
				M-A	M-A	M-A	OR	DR	TOT	PF	FD					BS	BA	
0	Jordyn Weaver	F	04:51	0-0	0-0	0-0	0	3	3	0	0	0	0	0	0	1	0	-12
32	Kemia Ward	F	03:18	0-0	0-0	0-0	0	0	0	2	0	0	0	1	0	0	0	-5
6	Magda Freire	G	08:05	0-2	0-1	0-0	0	0	0	1	0	0	0	1	0	0	0	-16
10	Ana Barreto	G	10:00	2-5	0-2	0-0	0	0	0	1	0	4	0	1	1	0	0	-20
12	Aylesha Wade	G	06:44	0-3	0-0	0-0	0	1	1	1	0	0	0	1	0	0	0	-14
8	Tamar Kopilevch		06:42	1-2	0-0	1-2	1	1	2	0	1	3	1	0	0	0	1	-15
3	Jermay Mapp		05:10	1-3	0-0	0-0	0	0	0	1	0	2	0	1	0	0	1	-8
22	Dayuna Colvin		05:11	0-1	0-0	0-2	0	1	1	1	1	0	1	0	0	0	1	-10
Team							2	0	2			0		0				
<b>Totals</b>				4-16	0-3	1-4	3	6	9	7	2	9	2	5	1	1	3	-20

Shooting By Period		
1st FG%	4-16	25.0%
3PT%	0-3	0.0%
FT%	1-4	25%
GM FG%	4-16	25.0%
3PT%	0-3	0.0%
FT%	1-4	25.0%

Dead Ball Rebounds: 2, 0

**Technical Fouls:** NONE

**Kentucky - 29**

NO.	Name	F	Min	FG	3P	FT	Rebounds			Fouls		TP	AS	TO	ST	Blocks		+/-
				M-A	M-A	M-A	OR	DR	TOT	PF	FD					BS	BA	
7	Teonni Key	F	09:04	2-5	0-0	0-0	3	2	5	1	1	4	2	1	0	0	1	18
32	Amelia Hassett	F	06:44	2-5	1-3	0-0	0	2	2	0	0	5	0	0	0	1	0	14
13	Clara Strack	C	09:01	2-3	0-0	2-2	0	1	1	0	3	6	2	1	1	0	0	18
3	Georgia Amooore	G	09:04	3-5	2-3	1-1	0	0	0	0	2	9	2	1	0	1	0	18
10	Dazia Lawrence	G	09:01	1-1	1-1	0-0	0	1	1	0	0	3	2	0	0	0	0	18
4	Lexi Blue		05:11	0-1	0-1	2-2	0	2	2	0	1	2	1	0	0	1	0	10
5	Cassidy Rowe		01:55	0-0	0-0	0-0	0	0	0	1	0	0	0	0	0	0	0	4
Team							0	1	1			0		0				
<b>Totals</b>				10-20	4-8	5-5	3	9	12	2	7	29	9	3	1	3	1	20

Shooting By Period		
1st FG%	10-20	50.0%
3PT%	4-8	50.0%
FT%	5-5	100%
GM FG%	10-20	50.0%
3PT%	4-8	50.0%
FT%	5-5	100.0%

Dead Ball Rebounds: 1, 1

**Technical Fouls:** NONE

	QNS	UKY
<b>Biggest lead</b>	0 (1 <sup>st</sup> 10:00)	20 (1 <sup>st</sup> 0:48)
<b>Best Scoring Run</b>	3(1 <sup>st</sup> 2:52)	12(1 <sup>st</sup> 3:42)
<b>Lead Changes</b>	0	
<b>Times Tied</b>	0	
<b>Time with Lead</b>	00:00	09:08

	QNS	UKY
<b>Points from</b>		
<b>Turnovers</b>	4	5
<b>Paint</b>	6	8
<b>Second Chance</b>	0	2
<b>Fast Breaks</b>	0	2
<b>Bench</b>	5	2

	Period by Period Scoring				
	1st	2nd	3rd	4th	TOT
<b>QNS</b>	9	9	11	16	45
<b>UKY</b>	29	23	24	11	87



**Officials:** Natasha Camy, Nykeshia Thompson, Charles Watson

**Period 2**

**Quarter Starters:**

<b>UKY</b>	5 Rowe C	10 Lawrence D	13 Strack C	17 Silva C	32 Hassett A
<b>QNS</b>	0 Weaver J	6 Freire M	8 Kopilevch T	10 Barreto A	22 Colvin D

Game Time	UKY	Score	Diff	QNS
10:00	3 AMOORE G substitution out			
10:00	4 BLUE L substitution out			
10:00	7 KEY T substitution out			
10:00	5 ROWE C substitution in			
10:00	17 SILVA C substitution in			
10:00	32 HASSETT A substitution in			
09:43	5 ROWE C 3pt FG , jump shot missed			
09:40				0 WEAVER J defensive rebound (4)
09:35				0 WEAVER J 2pt FG in the paint, layup missed
09:32	13 STRACK C defensive rebound (2)			
09:19	13 STRACK C 2pt FG outside the paint, jump shot made (8)	<b>31-9</b>	<b>22</b>	
09:19	32 HASSETT A assist (1)			
08:55				10 BARRETO A 3pt FG , jump shot missed
08:53	10 LAWRENCE D defensive rebound (2)			
08:49	10 LAWRENCE D 2pt FG fast break in the paint, layup made (5)	<b>33-9</b>	<b>24</b>	
08:31				10 BARRETO A 2pt FG in the paint, jump shot missed
08:29	13 STRACK C defensive rebound (3)			
08:18	5 ROWE C turnover bad pass (1)			10 BARRETO A steal (2)
08:15				0 WEAVER J turnover travel (1)
08:15				10 BARRETO A substitution out
08:15				24 HUICI T substitution in
08:07	5 ROWE C foul drawn (1)			6 FREIRE M foul personal (2 - 1)
08:07				6 FREIRE M substitution out
08:07				4 ADAMS K substitution in
07:54	17 SILVA C 2pt FG from turnover in the paint, layup missed			
07:54				8 KOPILEVECH T defensive rebound (3)
07:54	17 SILVA C foul personal (1 - 1)			8 KOPILEVECH T foul drawn (2)
07:39	jump ball situation			
07:32	13 STRACK C steal (2)			24 HUICI T turnover bad pass (1)
07:09	13 STRACK C 2pt FG from turnover outside the paint, jump shot made (10)	<b>35-9</b>	<b>26</b>	
07:09	32 HASSETT A assist (2)			
07:00				22 COLVIN D 2pt FG in the paint, layup missed
06:57	10 LAWRENCE D defensive rebound (3)			
06:52	32 HASSETT A 3pt FG , jump shot made (8)	<b>38-9</b>	<b>29</b>	
06:52	10 LAWRENCE D assist (3)			
06:47				Timeout 30 Sec
06:47	5 ROWE C substitution out			
06:47	10 LAWRENCE D substitution out			
06:47	13 STRACK C substitution out			
06:47	2 TYLER S substitution in			
06:47	3 AMOORE G substitution in			
06:47	7 KEY T substitution in			



**Officials:** Natasha Camy, Nykeshia Thompson, Charles Watson

Game Time	UKY	Score	Diff	QNS
06:47				4 ADAMS K substitution out
06:47				22 COLVIN D substitution out
06:47				24 HUICI T substitution out
06:47				3 MAPP J substitution in
06:47				10 BARRETO A substitution in
06:47				12 WADE A substitution in
06:37	2 TYLER S foul drawn (1)			8 KOPILEVECH T foul offensive (1 - 2)
06:37				8 KOPILEVECH T turnover offensive (1)
06:26	17 SILVA C turnover bad pass (1)			0 WEAVER J steal (1)
06:20	3 AMOORE G foul shooting (1 - 2)			0 WEAVER J foul drawn (1)
06:20		<b>38-10</b>	<b>28</b>	0 WEAVER J free throw 1 - 2 made (1)
06:20		<b>38-11</b>	<b>27</b>	0 WEAVER J free throw 2 - 2 made (2)
06:05	32 HASSETT A 3pt FG , jump shot made (11)	<b>41-11</b>	<b>30</b>	
06:05	2 TYLER S assist (1)			
05:47				10 BARRETO A 3pt FG , jump shot missed
05:43				3 MAPP J offensive rebound (1)
05:42		<b>41-13</b>	<b>28</b>	0 WEAVER J 2pt FG second chance in the paint, layup made (4)
05:42				3 MAPP J assist (1)
05:23	3 AMOORE G foul drawn (3)			12 WADE A foul shooting (2 - 3)
05:23	3 AMOORE G free throw 1 - 3 made (10)	<b>42-13</b>	<b>29</b>	
05:23	3 AMOORE G free throw 2 - 3 made (11)	<b>43-13</b>	<b>30</b>	
05:23	3 AMOORE G free throw 3 - 3 made (12)	<b>44-13</b>	<b>31</b>	
05:23				12 WADE A substitution out
05:23				1 LEWIS A substitution in
05:08		<b>44-15</b>	<b>29</b>	0 WEAVER J 2pt FG outside the paint, jump shot made (6)
05:08				8 KOPILEVECH T assist (2)
04:48	2 TYLER S 3pt FG , jump shot missed			
04:45	offensive rebound (17)			
04:45	3 AMOORE G 2pt FG second chance outside the paint, jump shot missed			
04:45	17 SILVA C offensive rebound (1)			
04:45	3 AMOORE G 3pt FG second chance, jump shot missed			
04:45	7 KEY T offensive rebound (6)			
04:45	32 HASSETT A 2pt FG second chance in the paint, layup made (13)	<b>46-15</b>	<b>31</b>	
04:45	7 KEY T assist (3)			
04:43				8 KOPILEVECH T turnover travel (2)
04:40	17 SILVA C substitution out			
04:40	32 HASSETT A substitution out			
04:40	4 BLUE L substitution in			
04:40	13 STRACK C substitution in			
04:23	7 KEY T foul offensive (2 - 3)			0 WEAVER J foul drawn (2)
04:23	7 KEY T turnover offensive (2)			
04:00		<b>46-17</b>	<b>29</b>	0 WEAVER J 2pt FG from turnover in the paint, jump shot made (8)
04:00				8 KOPILEVECH T assist (3)
03:20	13 STRACK C 2pt FG in the paint, layup made (12)	<b>48-17</b>	<b>31</b>	
03:20	7 KEY T assist (4)			
03:00				3 MAPP J turnover bad pass (2)



Official Basketball Play by Play - 2nd Period  
**Queens (NC) at Kentucky**  
 12/09/24 Historic Memorial Coliseum, Lexington, KY  
 2024-25 Women's Basketball

**Game Time:** 6:00 PM  
**Game Duration:** 1:46  
**Attendance:** 4,193

**Officials:** Natasha Camy, Nykeshia Thompson, Charles Watson

Game Time	UKY	Score	Diff	QNS
03:00	7 KEY T substitution out			
03:00	32 HASSETT A substitution in			
02:38	13 STRACK C 3pt FG from turnover, jump shot missed			
02:35				0 WEAVER J defensive rebound (5)
02:33				0 WEAVER J 2pt FG outside the paint, jump shot blocked
02:33	13 STRACK C block (1)			
02:33				8 KOPILEVECH T offensive rebound (4)
02:33				8 KOPILEVECH T 2pt FG second chance in the paint, tip-in layup missed
02:33	32 HASSETT A defensive rebound (3)			
02:24	13 STRACK C 2pt FG in the paint, jump shot missed			
02:20				3 MAPP J defensive rebound (2)
02:18				3 MAPP J turnover lost ball (3)
02:18	2 TYLER S substitution out			
02:18	10 LAWRENCE D substitution in			
02:08	3 AMOORE G 2pt FG from turnover in the paint, layup made (14)	<b>50-17</b>	<b>33</b>	
01:51				1 LEWIS A 3pt FG , jump shot missed
01:47				3 MAPP J offensive rebound (3)
01:47				3 MAPP J 2pt FG second chance in the paint, tip-in layup missed
01:46	10 LAWRENCE D defensive rebound (4)			
01:41	10 LAWRENCE D 2pt FG fast break in the paint, pull up jump shot made (7)	<b>52-17</b>	<b>35</b>	
01:24				8 KOPILEVECH T 2pt FG outside the paint, jump shot missed
01:22				offensive rebound (17)
01:21	3 AMOORE G substitution out			
01:21	5 ROWE C substitution in			
01:21				0 WEAVER J substitution out
01:21				4 ADAMS K substitution in
01:18				3 MAPP J 3pt FG second chance, jump shot missed
01:15	32 HASSETT A defensive rebound (4)			
00:59	13 STRACK C 3pt FG , jump shot missed			
00:57				3 MAPP J defensive rebound (4)
00:46				3 MAPP J 2pt FG in the paint, jump shot blocked
00:46	13 STRACK C block (2)			
00:42	5 ROWE C defensive rebound (1)			
00:39	32 HASSETT A 3pt FG , jump shot missed			
00:36				4 ADAMS K defensive rebound (1)
00:33	32 HASSETT A foul shooting (1 - 4)			4 ADAMS K foul drawn (1)
00:33				4 ADAMS K free throw 1 - 2 missed
00:33				offensive dead ball rebound (3)
00:33		<b>52-18</b>	<b>34</b>	4 ADAMS K free throw 2 - 2 made (1)
00:33				8 KOPILEVECH T substitution out
00:33				0 WEAVER J substitution in
00:06	32 HASSETT A 3pt FG , jump shot missed			
00:02				3 MAPP J defensive rebound (5)
<b>END OF PERIOD</b>				
<b>UKY 52-18 QNS</b>				





**Officials:** Natasha Camy, Nykeshia Thompson, Charles Watson

**Queens (NC) - 9**

NO.	Name	F	Min	FG	3P	FT	Rebounds			Fouls		TP	AS	TO	ST	Blocks		+/-
				M-A	M-A	M-A	OR	DR	TOT	PF	FD					BS	BA	
0	Jordyn Weaver	F	09:13	3-5	0-0	2-2	0	2	2	0	2	8	0	1	1	0	1	-15
32	Kemia Ward	F	00:00	0-0	0-0	0-0	0	0	0	0	0	0	0	0	0	0	0	0
6	Magda Freire	G	01:53	0-0	0-0	0-0	0	0	0	1	0	0	0	0	0	0	0	-4
10	Ana Barreto	G	08:32	0-3	0-2	0-0	0	0	0	0	0	0	0	0	1	0	0	-9
12	Aylesha Wade	G	01:24	0-0	0-0	0-0	0	0	0	1	0	0	0	0	0	0	0	-2
8	Tamar Kopilevech		09:26	0-2	0-0	0-0	1	1	2	1	1	0	2	2	0	0	0	-14
22	Dayuna Colvin		03:13	0-1	0-0	0-0	0	0	0	0	0	0	0	0	0	0	0	-9
24	Tiziana Huici		01:28	0-0	0-0	0-0	0	0	0	0	0	0	0	1	0	0	0	-5
4	Kaitlyn Adams		02:41	0-0	0-0	1-2	0	1	1	0	1	1	0	0	0	0	0	-4
3	Jermay Mapp		06:47	0-3	0-1	0-0	2	3	5	0	0	0	1	2	0	0	1	-5
1	Alyssa Lewis		05:23	0-1	0-1	0-0	0	0	0	0	0	0	0	0	0	0	0	-3
Team							1	0	1			0		0				
<b>Totals</b>				3-15	0-4	3-4	4	7	11	3	4	9	3	6	2	0	2	-14

Shooting By Period		
2nd FG%	3-15	20.0%
3PT%	0-4	0.0%
FT%	3-4	75%
GM FG%	3-15	20.0%
3PT%	0-4	0.0%
FT%	3-4	75.0%

Dead Ball Rebounds: 1, 0

Technical Fouls::NONE

**Kentucky - 23**

NO.	Name	F	Min	FG	3P	FT	Rebounds			Fouls		TP	AS	TO	ST	Blocks		+/-
				M-A	M-A	M-A	OR	DR	TOT	PF	FD					BS	BA	
7	Teonni Key	F	03:47	0-0	0-0	0-0	1	0	1	1	0	0	2	1	0	0	0	2
32	Amelia Hassett	F	08:20	3-5	2-4	0-0	0	2	2	1	0	8	2	0	0	0	0	14
13	Clara Strack	C	07:53	3-6	0-2	0-0	0	2	2	0	0	6	0	0	1	2	0	12
3	Georgia Amooore	G	05:26	1-3	0-1	3-3	0	0	0	1	1	5	0	0	0	0	0	6
10	Dazia Lawrence	G	05:31	2-2	0-0	0-0	0	3	3	0	0	4	1	0	0	0	0	12
5	Cassidy Rowe		04:34	0-1	0-1	0-0	0	1	1	0	1	0	0	1	0	0	0	8
17	Clara Silva		05:20	0-1	0-0	0-0	1	0	1	1	0	0	0	1	0	0	0	11
2	Saniah Tyler		04:29	0-1	0-1	0-0	0	0	0	0	1	0	1	0	0	0	0	2
4	Lexi Blue		04:40	0-0	0-0	0-0	0	0	0	0	0	0	0	0	0	0	0	3
Team							1	0	1			0		0				
<b>Totals</b>				9-19	2-9	3-3	3	8	11	4	3	23	6	3	1	2	0	14

Shooting By Period		
2nd FG%	9-19	47.4%
3PT%	2-9	22.2%
FT%	3-3	100%
GM FG%	9-19	47.4%
3PT%	2-9	22.2%
FT%	3-3	100.0%

Dead Ball Rebounds: 0, 0

Technical Fouls::NONE

	QNS	UKY
<b>Biggest lead</b>	0 (1 <sup>st</sup> 10:00)	35 (2 <sup>nd</sup> 1:41)
<b>Best Scoring Run</b>	2(2 <sup>nd</sup> 6:20)	9(2 <sup>nd</sup> 6:52)
<b>Lead Changes</b>	0	
<b>Times Tied</b>	0	
<b>Time with Lead</b>	00:00	09:43

Points from	QNS	UKY
<b>Turnovers</b>	4	4
<b>Paint</b>	4	10
<b>Second Chance</b>	2	2
<b>Fast Breaks</b>	0	4
<b>Bench</b>	1	0

	Period by Period Scoring				
	1st	2nd	3rd	4th	TOT
<b>QNS</b>	9	9	11	16	45
<b>UKY</b>	29	23	24	11	87



Officials: Natasha Camy, Nykeshia Thompson, Charles Watson

**Queens (NC) - 18**

NO.	Name	Min	FG		3P	FT	Rebounds			Fouls		TP	AS	TO	ST	Blocks		+/-
			M-A	M-A	M-A	OR	DR	TOT	PF	FD	BS					BA		
0	Jordyn Weaver	F 14:03	3-5	0-0	2-2	0	5	5	0	2	8	0	1	1	1	1	1	-27
32	Kemia Ward	F 03:18	0-0	0-0	0-0	0	0	0	2	0	0	0	1	0	0	0	0	-5
6	Magda Freire	G 09:58	0-2	0-1	0-0	0	0	0	2	0	0	0	1	0	0	0	0	-20
10	Ana Barreto	G 18:32	2-8	0-4	0-0	0	0	0	1	0	4	0	1	2	0	0	0	-29
12	Aylesha Wade	G 08:08	0-3	0-0	0-0	0	1	1	2	0	0	0	1	0	0	0	0	-16
8	Tamar Kopilevch	16:08	1-4	0-0	1-2	2	2	4	1	2	3	3	2	0	0	0	1	-29
3	Jermay Mapp	11:57	1-6	0-1	0-0	2	3	5	1	0	2	1	3	0	0	0	2	-13
22	Dayuna Colvin	08:24	0-2	0-0	0-2	0	1	1	1	1	0	1	0	0	0	0	1	-19
24	Tiziana Huici	01:28	0-0	0-0	0-0	0	0	0	0	0	0	0	1	0	0	0	0	-5
4	Kaitlyn Adams	02:41	0-0	0-0	1-2	0	1	1	0	1	1	0	0	0	0	0	0	-4
1	Alyssa Lewis	05:23	0-1	0-1	0-0	0	0	0	0	0	0	0	0	0	0	0	0	-3
Team							3	0	3		0		0					
<b>Totals</b>			7-31	0-7	4-8	7	13	20	10	6	18	5	11	3	1	5		-34

Shooting By Period		
1st FG%	4-16	25.0%
3PT%	0-3	0.0%
FT%	1-4	25%
2nd FG%	3-15	20.0%
3PT%	0-4	0.0%
FT%	3-4	75%
GM FG%	7-31	22.6%
3PT%	0-7	0.0%
FT%	4-8	50.0%

Dead Ball Rebounds: 3, 0

Technical Fouls::NONE

**Kentucky - 52**

NO.	Name	Min	FG		3P	FT	Rebounds			Fouls		TP	AS	TO	ST	Blocks		+/-
			M-A	M-A	M-A	OR	DR	TOT	PF	FD	BS					BA		
7	Teonni Key	F 12:51	2-5	0-0	0-0	4	2	6	2	1	4	4	2	0	0	0	1	20
32	Amelia Hassett	F 15:04	5-10	3-7	0-0	0	4	4	1	0	13	2	0	0	1	0	28	
13	Clara Strack	C 16:54	5-9	0-2	2-2	0	3	3	0	3	12	2	1	2	2	0	30	
3	Georgia Amooore	G 14:30	4-8	2-4	4-4	0	0	0	1	3	14	2	1	0	1	0	24	
10	Dazia Lawrence	G 14:32	3-3	1-1	0-0	0	4	4	0	0	7	3	0	0	0	0	30	
4	Lexi Blue	09:51	0-1	0-1	2-2	0	2	2	0	1	2	1	0	0	1	0	13	
5	Cassidy Rowe	06:29	0-1	0-1	0-0	0	1	1	1	1	0	0	1	0	0	0	12	
17	Clara Silva	05:20	0-1	0-0	0-0	1	0	1	1	0	0	0	1	0	0	0	11	
2	Saniah Tyler	04:29	0-1	0-1	0-0	0	0	0	0	1	0	1	0	0	0	0	2	
Team							1	1	2		0		0					
<b>Totals</b>			19-39	6-17	8-8	6	17	23	6	10	52	15	6	2	5	1	34	

Shooting By Period		
1st FG%	10-20	50.0%
3PT%	4-8	50.0%
FT%	5-5	100%
2nd FG%	9-19	47.4%
3PT%	2-9	22.2%
FT%	3-3	100%
GM FG%	19-39	48.7%
3PT%	6-17	35.3%
FT%	8-8	100.0%

Dead Ball Rebounds: 1, 1

Technical Fouls::NONE

	QNS	UKY
Biggest lead	0 (1st 10:00)	35 (2nd 1:41)
Best Scoring Run	3(1st 2:52)	12(1st 3:42)
Lead Changes	0	
Times Tied	0	
Time with Lead	00:00	19:08

Points from	QNS	UKY
Turnovers	8	9
Paint	10	18
Second Chance	2	4
Fast Breaks	0	6
Bench	6	2

	Period by Period Scoring				
	1st	2nd	3rd	4th	TOT
QNS	9	9	11	16	45
UKY	29	23	24	11	87



**Officials:** Natasha Camy, Nykeshia Thompson, Charles Watson

**Period 3**

**Quarter Starters:**

<b>UKY</b>	3 Amoores G	7 Key T	10 Lawrence D	13 Strack C	32 Hassett A
<b>QNS</b>	0 Weaver J	6 Freire M	10 Barreto A	12 Wade A	32 Ward K

Game Time	UKY	Score	Diff	QNS
10:00	4 BLUE L substitution out			
10:00	5 ROWE C substitution out			
10:00	3 AMOORE G substitution in			
10:00	7 KEY T substitution in			
10:00				1 LEWIS A substitution out
10:00				3 MAPP J substitution out
10:00				4 ADAMS K substitution out
10:00				6 FREIRE M substitution in
10:00				12 WADE A substitution in
10:00				32 WARD K substitution in
09:48	13 STRACK C foul drawn (4)			32 WARD K foul personal (3 - 1)
09:48	10 LAWRENCE D foul drawn (1)			32 WARD K foul personal (4 - 2)
09:48				10 BARRETO A substitution out
09:48				8 KOPILEVECH T substitution in
09:47				32 WARD K substitution out
09:47				10 BARRETO A substitution in
09:45	10 LAWRENCE D 2pt FG outside the paint, jump shot missed			
09:39				10 BARRETO A defensive rebound (1)
09:27				6 FREIRE M 2pt FG in the paint, jump shot missed
09:24	3 AMOORE G defensive rebound (1)			
09:21	3 AMOORE G foul drawn (4)			6 FREIRE M foul shooting (3 - 3)
09:21				6 FREIRE M substitution out
09:21				22 COLVIN D substitution in
09:21	3 AMOORE G free throw 1 - 2 made (15)	<b>53-18</b>	<b>35</b>	
09:21	3 AMOORE G free throw 2 - 2 made (16)	<b>54-18</b>	<b>36</b>	
09:07				12 WADE A 2pt FG in the paint, layup missed
09:04				12 WADE A offensive rebound (2)
09:04				12 WADE A 2pt FG second chance in the paint, tip-in layup missed
09:02	7 KEY T defensive rebound (7)			
08:51	3 AMOORE G turnover bad pass (2)			
08:43				22 COLVIN D turnover lost ball (1)
08:31	3 AMOORE G 2pt FG from turnover in the paint, layup missed			
08:28				22 COLVIN D defensive rebound (2)
08:25				10 BARRETO A turnover out of bounds (2)
08:16	3 AMOORE G 3pt FG from turnover, jump shot missed			
08:13				8 KOPILEVECH T defensive rebound (5)
08:07	10 LAWRENCE D foul shooting (1 - 1)			12 WADE A foul drawn (1)
08:07				12 WADE A free throw 1 - 2 missed
08:07				offensive dead ball rebound (4)
08:07		<b>54-19</b>	<b>35</b>	12 WADE A free throw 2 - 2 made (1)
07:59	32 HASSETT A 2pt FG fast break in the paint, layup made (15)	<b>56-19</b>	<b>37</b>	
07:59	10 LAWRENCE D assist (4)			



Official Basketball Play by Play - 3rd Period  
**Queens (NC) at Kentucky**  
 12/09/24 Historic Memorial Coliseum, Lexington, KY  
 2024-25 Women's Basketball

**Game Time:** 6:00 PM  
**Game Duration:** 1:46  
**Attendance:** 4,193

**Officials:** Natasha Camy, Nykeshia Thompson, Charles Watson

Game Time	UKY	Score	Diff	QNS
07:39		<b>56-22</b>	<b>34</b>	10 BARRETO A 3pt FG , jump shot made (7)
07:21	3 AMOORE G 3pt FG , jump shot made (19)	<b>59-22</b>	<b>37</b>	
07:21	32 HASSETT A assist (3)			
07:02	3 AMOORE G foul shooting (2 - 2)			12 WADE A foul drawn (2)
07:02		<b>59-23</b>	<b>36</b>	12 WADE A free throw 1 - 2 made (2)
07:02		<b>59-24</b>	<b>35</b>	12 WADE A free throw 2 - 2 made (3)
06:42	13 STRACK C 3pt FG , jump shot missed			
06:38				8 KOPILEVECH T defensive rebound (6)
06:33				10 BARRETO A turnover bad pass (3)
06:20	13 STRACK C turnover travel (2)			
06:07		<b>59-26</b>	<b>33</b>	22 COLVIN D 2pt FG from turnover in the paint, jump shot made (2)
05:55	7 KEY T foul drawn (2)			0 WEAVER J foul personal (1 - 4)
05:55	3 AMOORE G substitution out			
05:55	4 BLUE L substitution in			
05:52	13 STRACK C 2pt FG outside the paint, jump shot missed			
05:49	7 KEY T offensive rebound (8)			
05:39	4 BLUE L 2pt FG second chance in the paint, layup made (4)	<b>61-26</b>	<b>35</b>	
05:16				12 WADE A 3pt FG , jump shot missed
05:13				22 COLVIN D offensive rebound (3)
05:10				10 BARRETO A 3pt FG second chance, jump shot missed
05:07	13 STRACK C defensive rebound (4)			
05:02	32 HASSETT A 3pt FG , jump shot missed			
04:58				22 COLVIN D defensive rebound (4)
04:53				22 COLVIN D 2pt FG outside the paint, pull up jump shot missed
04:52				offensive dead ball rebound (5)
04:52	32 HASSETT A foul personal (2 - 3)			12 WADE A foul drawn (3)
04:52	7 KEY T substitution out			
04:52	10 LAWRENCE D substitution out			
04:52	3 AMOORE G substitution in			
04:52	17 SILVA C substitution in			
04:52				0 WEAVER J substitution out
04:52				10 BARRETO A substitution out
04:52				3 MAPP J substitution in
04:52				4 ADAMS K substitution in
04:48				12 WADE A turnover travel (2)
04:33	17 SILVA C 2pt FG from turnover in the paint, layup missed			
04:30	17 SILVA C offensive rebound (2)			
04:29	17 SILVA C foul drawn (1)			8 KOPILEVECH T foul shooting (2 - 5)
04:29	17 SILVA C free throw 1 - 2 made (1)	<b>62-26</b>	<b>36</b>	
04:29	17 SILVA C free throw 2 - 2 made (2)	<b>63-26</b>	<b>37</b>	
04:07				12 WADE A 3pt FG , jump shot missed
04:05	32 HASSETT A defensive rebound (5)			
04:05	32 HASSETT A foul drawn (1)			12 WADE A foul personal (3 - 6)
04:05	13 STRACK C substitution out			
04:05	7 KEY T substitution in			
04:05				12 WADE A substitution out
04:05				11 MILLS K substitution in
04:05	32 HASSETT A free throw 1 - 2 made (16)	<b>64-26</b>	<b>38</b>	



Official Basketball Play by Play - 3rd Period  
**Queens (NC) at Kentucky**  
 12/09/24 Historic Memorial Coliseum, Lexington, KY  
 2024-25 Women's Basketball

**Game Time:** 6:00 PM  
**Game Duration:** 1:46  
**Attendance:** 4,193

**Officials:** Natasha Camy, Nykeshia Thompson, Charles Watson

Game Time	UKY	Score	Diff	QNS
04:05	32 HASSETT A free throw 2 - 2 made (17)	<b>65-26</b>	<b>39</b>	
03:45				11 MILLS K turnover bad pass (1)
03:36	3 AMOORE G foul drawn (5)			4 ADAMS K foul personal (1 - 7)
03:36	3 AMOORE G free throw 1 - 2 made (20)	<b>66-26</b>	<b>40</b>	
03:36	3 AMOORE G free throw 2 - 2 missed			
03:34				4 ADAMS K defensive rebound (2)
03:20		<b>66-28</b>	<b>38</b>	4 ADAMS K 2pt FG in the paint, turnaround jump shot made (3)
03:11	7 KEY T foul drawn (3)			4 ADAMS K foul shooting (2 - 8)
03:11	3 AMOORE G substitution out			
03:11	5 ROWE C substitution in			
03:11				4 ADAMS K substitution out
03:11				0 WEAVER J substitution in
03:11	7 KEY T free throw 1 - 2 made (5)	<b>67-28</b>	<b>39</b>	
03:11	7 KEY T free throw 2 - 2 made (6)	<b>68-28</b>	<b>40</b>	
02:53	17 SILVA C foul shooting (2 - 4)			0 WEAVER J foul drawn (3)
02:53				0 WEAVER J free throw 1 - 2 missed
02:53				offensive dead ball rebound (6)
02:53		<b>68-29</b>	<b>39</b>	0 WEAVER J free throw 2 - 2 made (9)
02:42	17 SILVA C 2pt FG in the paint, layup made (4)	<b>70-29</b>	<b>41</b>	
02:42	5 ROWE C assist (1)			
02:20				8 KOPILEVECH T 2pt FG outside the paint, jump shot missed
02:17	7 KEY T defensive rebound (9)			
02:14	7 KEY T foul drawn (4)			22 COLVIN D foul personal (2 - 9)
02:14	32 HASSETT A substitution out			
02:14	11 BROOKS G substitution in			
02:14				3 MAPP J substitution out
02:14				10 BARRETO A substitution in
02:14	7 KEY T free throw 1 - 2 made (7)	<b>71-29</b>	<b>42</b>	
02:14	7 KEY T free throw 2 - 2 made (8)	<b>72-29</b>	<b>43</b>	
02:03				10 BARRETO A 3pt FG , jump shot missed
02:00	5 ROWE C defensive rebound (2)			
01:50	7 KEY T 2pt FG in the paint, layup made (10)	<b>74-29</b>	<b>45</b>	
01:35				11 MILLS K 3pt FG , jump shot missed
01:33	defensive rebound (32)			
01:33				11 MILLS K substitution out
01:33				1 LEWIS A substitution in
01:14	5 ROWE C 3pt FG , jump shot missed			
01:10				1 LEWIS A defensive rebound (1)
01:05				0 WEAVER J 2pt FG outside the paint, jump shot missed
01:01	7 KEY T defensive rebound (10)			
00:53	17 SILVA C turnover lost ball (2)			
00:34				22 COLVIN D 3pt FG from turnover, jump shot blocked
00:34	7 KEY T block (1)			
00:34				offensive rebound (30)
00:21				1 LEWIS A 2pt FG from turnover second chance in the paint, jump shot missed
00:18	4 BLUE L defensive rebound (3)			
00:02	7 KEY T 2pt FG in the paint, layup made (12)	<b>76-29</b>	<b>47</b>	
00:02	5 ROWE C assist (2)			



Official Basketball Play by Play - 3rd Period  
**Queens (NC) at Kentucky**  
12/09/24 Historic Memorial Coliseum, Lexington, KY  
2024-25 Women's Basketball

**Game Time:** 6:00 PM  
**Game Duration:** 1:46  
**Attendance:** 4,193

**Officials:** Natasha Camy, Nykesha Thompson, Charles Watson

Game Time	UKY	Score	Diff	QNS
END OF PERIOD				
UKY 76-29 QNS				



Officials: Natasha Camy, Nykeshia Thompson, Charles Watson

**Queens (NC) - 11**

NO.	Name	F	Min	FG		3P		FT		Rebounds			Fouls		TP	AS	TO	ST	Blocks		+/-	
				M-A	M-A	M-A	M-A	OR	DR	TOT	PF	FD	BS	BA								
0	Jordyn Weaver	F	08:19	0-1	0-0	1-2	0	0	0	1	1	1	0	0	0	0	0	0	0	0	0	-10
32	Kemia Ward	F	00:13	0-0	0-0	0-0	0	0	0	2	0	0	0	0	0	0	0	0	0	0	0	0
6	Magda Freire	G	00:39	0-1	0-0	0-0	0	0	0	1	0	0	0	0	0	0	0	0	0	0	0	0
10	Ana Barreto	G	07:21	1-3	1-3	0-0	0	1	1	0	0	3	0	2	0	0	0	0	0	0	0	-7
12	Aylesha Wade	G	05:55	0-4	0-2	3-4	1	0	1	1	3	3	0	1	0	0	0	0	0	0	0	-3
8	Tamar Kopilevch		09:48	0-1	0-0	0-0	0	2	2	1	0	0	0	0	0	0	0	0	0	0	0	-13
22	Dayuna Colvin		09:21	1-3	0-1	0-0	1	2	3	1	0	2	0	1	0	0	0	0	1	0	1	-13
3	Jermamy Mapp		02:38	0-0	0-0	0-0	0	0	0	0	0	0	0	0	0	0	0	0	0	0	0	-6
4	Kaitlyn Adams		01:41	1-1	0-0	0-0	0	1	1	2	0	2	0	0	0	0	0	0	0	0	0	-3
11	Kamara Mills		02:32	0-1	0-1	0-0	0	0	0	0	0	0	0	0	1	0	0	0	0	0	0	-8
1	Alyssa Lewis		01:33	0-1	0-0	0-0	0	1	1	0	0	0	0	0	0	0	0	0	0	0	0	-2
Team										1	0	1			0							
<b>Totals</b>				3-16	1-7	4-6	3	7	10	9	4	11	0	5	0	0	0	1	0	1		-13

Shooting By Period		
3rd FG%	3-16	18.8%
3PT%	1-7	14.3%
FT%	4-6	66.7%
GM FG%	3-16	18.8%
3PT%	1-7	14.3%
FT%	4-6	66.7%

Dead Ball Rebounds: 3, 0

Technical Fouls::NONE

**Kentucky - 24**

NO.	Name	F	Min	FG		3P		FT		Rebounds			Fouls		TP	AS	TO	ST	Blocks		+/-
				M-A	M-A	M-A	M-A	OR	DR	TOT	PF	FD	BS	BA							
7	Teonni Key	F	09:13	2-2	0-0	4-4	1	3	4	0	3	8	0	0	0	0	0	0	1	0	11
32	Amelia Hassett	F	07:46	1-2	0-1	2-2	0	1	1	1	1	4	1	0	0	0	0	0	0	0	7
13	Clara Strack	C	05:55	0-2	0-1	0-0	0	1	1	0	1	0	0	1	0	0	0	0	0	0	3
3	Georgia Amoore	G	05:46	1-3	1-2	3-4	0	1	1	1	2	6	0	1	0	0	0	0	0	0	2
10	Dazia Lawrence	G	05:08	0-1	0-0	0-0	0	0	0	1	1	0	1	0	0	0	0	0	0	0	1
4	Lexi Blue		05:55	1-1	0-0	0-0	0	1	1	0	0	2	0	0	0	0	0	0	0	0	14
17	Clara Silva		04:52	1-2	0-0	2-2	1	0	1	1	1	4	0	1	0	0	0	0	0	0	12
5	Cassidy Rowe		03:11	0-1	0-1	0-0	0	1	1	0	0	0	2	0	0	0	0	0	0	0	9
11	Gabby Brooks		02:14	0-0	0-0	0-0	0	0	0	0	0	0	0	0	0	0	0	0	0	0	6
Team										0	1	1			0						
<b>Totals</b>				6-14	1-5	11-12	2	9	11	4	9	24	4	3	0	1	0	1	0	0	13

Shooting By Period		
3rd FG%	6-14	42.9%
3PT%	1-5	20.0%
FT%	11-12	91.7%
GM FG%	6-14	42.9%
3PT%	1-5	20.0%
FT%	11-12	91.7%

Dead Ball Rebounds: 0, 0

Technical Fouls::NONE

	QNS	UKY
Biggest lead	0 (1 <sup>st</sup> 10:00)	47 (3 <sup>rd</sup> 0:02)
Best Scoring Run	4(3 <sup>rd</sup> 6:07)	8(3 <sup>rd</sup> 0:02)
Lead Changes	0	
Times Tied	0	
Time with Lead	00:00	09:45

Points from	QNS	UKY
Turnovers	2	3
Paint	4	10
Second Chance	0	4
Fast Breaks	0	2
Bench	4	6

	Period by Period Scoring				
	1st	2nd	3rd	4th	TOT
QNS	9	9	11	16	45
UKY	29	23	24	11	87



**Officials:** Natasha Camy, Nykeshia Thompson, Charles Watson

**Period 4**

**Quarter Starters:**

<b>UKY</b>	3 Amoore G	8 Becker T	10 Lawrence D	13 Strack C	32 Hassett A
<b>QNS</b>	0 Weaver J	1 Lewis A	8 Kopilevch T	10 Barreto A	22 Colvin D

Game Time	UKY	Score	Diff	QNS
10:00	4 BLUE L substitution out			
10:00	5 ROWE C substitution out			
10:00	7 KEY T substitution out			
10:00	11 BROOKS G substitution out			
10:00	17 SILVA C substitution out			
10:00	3 AMOORE G substitution in			
10:00	8 BECKER T substitution in			
10:00	10 LAWRENCE D substitution in			
10:00	13 STRACK C substitution in			
10:00	32 HASSETT A substitution in			
09:33	8 BECKER T foul shooting (1 - 1)			22 COLVIN D foul drawn (2)
09:33		<b>76-30</b>	<b>46</b>	22 COLVIN D free throw 1 - 2 made (3)
09:33		<b>76-31</b>	<b>45</b>	22 COLVIN D free throw 2 - 2 made (4)
09:18	13 STRACK C 2pt FG outside the paint, jump shot made (14)	<b>78-31</b>	<b>47</b>	
09:18	10 LAWRENCE D assist (5)			
08:50				8 KOPILEVECH T 3pt FG , jump shot missed
08:47	32 HASSETT A defensive rebound (6)			
08:44	13 STRACK C 2pt FG fast break in the paint, layup made (16)	<b>80-31</b>	<b>49</b>	
08:44	3 AMOORE G assist (3)			
08:19	jump ball situation			
08:19	32 HASSETT A steal (1)			0 WEAVER J turnover lost ball (2)
08:04	8 BECKER T 3pt FG from turnover, jump shot missed			
08:00	13 STRACK C offensive rebound (5)			
07:53	3 AMOORE G 3pt FG from turnover second chance, jump shot missed			
07:48	13 STRACK C offensive rebound (6)			
07:46	32 HASSETT A 2pt FG from turnover second chance in the paint, layup made (19)	<b>82-31</b>	<b>51</b>	
07:46	3 AMOORE G assist (4)			
07:19	8 BECKER T foul shooting (2 - 2)			0 WEAVER J foul drawn (4)
07:19	3 AMOORE G substitution out			
07:19	8 BECKER T substitution out			
07:19	2 TYLER S substitution in			
07:19	4 BLUE L substitution in			
07:19				8 KOPILEVECH T substitution out
07:19				32 WARD K substitution in
07:19		<b>82-32</b>	<b>50</b>	0 WEAVER J free throw 1 - 2 made (10)
07:19		<b>82-33</b>	<b>49</b>	0 WEAVER J free throw 2 - 2 made (11)
07:19				1 LEWIS A substitution out
07:19				22 COLVIN D substitution out
07:19				6 FREIRE M substitution in
07:19				12 WADE A substitution in
07:09	13 STRACK C 3pt FG , jump shot missed			
07:06				12 WADE A defensive rebound (3)





**Officials:** Natasha Camy, Nykeshia Thompson, Charles Watson

Game Time	UKY	Score	Diff	QNS
06:59		<b>82-36</b>	<b>46</b>	10 BARRETO A 3pt FG , jump shot made (10)
06:59				12 WADE A assist (1)
06:41	13 STRACK C turnover travel (3)			
06:41	13 STRACK C substitution out			
06:41	7 KEY T substitution in			
06:29				10 BARRETO A 2pt FG from turnover in the paint, layup missed
06:26	10 LAWRENCE D defensive rebound (5)			
06:21	4 BLUE L 2pt FG fast break outside the paint, jump shot made (6)	<b>84-36</b>	<b>48</b>	
06:21	2 TYLER S assist (2)			
05:58	7 KEY T steal (1)			0 WEAVER J turnover lost ball (3)
05:53	7 KEY T turnover lost ball (3)			12 WADE A steal (1)
05:30				0 WEAVER J 2pt FG from turnover outside the paint, jump shot missed
05:27	7 KEY T defensive rebound (11)			
05:11	32 HASSETT A foul offensive (3 - 3)			6 FREIRE M foul drawn (1)
05:11	32 HASSETT A turnover offensive (1)			
05:11				0 WEAVER J substitution out
05:11				3 MAPP J substitution in
04:57				10 BARRETO A 3pt FG from turnover, jump shot missed
04:52	2 TYLER S defensive rebound (1)			
04:37	32 HASSETT A turnover lost ball (2)			3 MAPP J steal (1)
04:29		<b>84-38</b>	<b>46</b>	3 MAPP J 2pt FG fast break from turnover in the paint, layup made (4)
04:12	32 HASSETT A 3pt FG , jump shot missed			
04:07	7 KEY T offensive rebound (12)			
04:07	7 KEY T 2pt FG second chance in the paint, tip-in layup missed			
04:07	offensive dead ball rebound (3)			
04:07	7 KEY T foul drawn (5)			3 MAPP J foul personal (2 - 1)
04:07	10 LAWRENCE D substitution out			
04:07	32 HASSETT A substitution out			
04:07	5 ROWE C substitution in			
04:07	17 SILVA C substitution in			
04:07				10 BARRETO A substitution out
04:07				24 HUICI T substitution in
03:54	17 SILVA C 2pt FG second chance outside the paint, jump shot missed			
03:51	7 KEY T offensive rebound (13)			
03:43	17 SILVA C 2pt FG second chance in the paint, jump shot missed			
03:41	17 SILVA C offensive rebound (3)			
03:40	5 ROWE C 3pt FG second chance, jump shot missed			
03:37				defensive rebound (32)
03:24				3 MAPP J 2pt FG in the paint, turnaround jump shot missed
03:20	17 SILVA C defensive rebound (4)			
03:09	4 BLUE L 3pt FG , jump shot missed			
03:06	offensive rebound (45)			
02:56	7 KEY T substitution out			
02:56	11 BROOKS G substitution in			
02:56				3 MAPP J substitution out
02:56				4 ADAMS K substitution in



Official Basketball Play by Play - 4th Period  
**Queens (NC) at Kentucky**  
 12/09/24 Historic Memorial Coliseum, Lexington, KY  
 2024-25 Women's Basketball

**Game Time:** 6:00 PM  
**Game Duration:** 1:46  
**Attendance:** 4,193

**Officials:** Natasha Camy, Nykeshia Thompson, Charles Watson

Game Time	UKY	Score	Diff	QNS
02:46	4 BLUE L turnover lost ball (1)			12 WADE A steal (2)
02:40		<b>84-40</b>	<b>44</b>	12 WADE A 2pt FG fast break from turnover in the paint, layup made (5)
02:40				24 HUICI T assist (1)
02:23	17 SILVA C 2pt FG outside the paint, turnaround jump shot missed			
02:20				4 ADAMS K defensive rebound (3)
02:15		<b>84-42</b>	<b>42</b>	4 ADAMS K 2pt FG fast break in the paint, layup made (5)
02:01	11 BROOKS G foul drawn (1)			6 FREIRE M foul personal (4 - 2)
02:01	4 BLUE L substitution out			
02:01	8 BECKER T substitution in			
02:01				6 FREIRE M substitution out
02:01				11 MILLS K substitution in
01:54	17 SILVA C turnover lost ball (3)			24 HUICI T steal (1)
01:47	8 BECKER T steal (1)			24 HUICI T turnover lost ball (2)
01:23	2 TYLER S 3pt FG from turnover, jump shot missed			
01:20				32 WARD K defensive rebound (1)
01:07		<b>84-44</b>	<b>40</b>	4 ADAMS K 2pt FG in the paint, jump shot made (7)
00:49	17 SILVA C 2pt FG in the paint, layup missed			
00:46	8 BECKER T offensive rebound (1)			
00:34	2 TYLER S 3pt FG second chance, jump shot made (3)	<b>87-44</b>	<b>43</b>	
00:34	17 SILVA C assist (1)			
00:24				12 WADE A substitution out
00:24				1 LEWIS A substitution in
00:22	17 SILVA C foul shooting (3 - 4)			4 ADAMS K foul drawn (2)
00:22				4 ADAMS K free throw 1 - 2 missed
00:22				offensive dead ball rebound (7)
00:22		<b>87-45</b>	<b>42</b>	4 ADAMS K free throw 2 - 2 made (8)
<b>END OF GAME</b>				
<b>UKY 87-45 QNS</b>				



Officials: Natasha Camy, Nykeshia Thompson, Charles Watson

**Queens (NC) - 16**

NO.	Name	Min	FG			Rebounds			Fouls		TP	AS	TO	ST	Blocks		+/-
			M-A	M-A	M-A	OR	DR	TOT	PF	FD					BS	BA	
0	Jordyn Weaver	F 04:49	0-1	0-0	2-2	0	0	0	0	1	2	0	2	0	0	0	-1
32	Kemia Ward	F 07:19	0-0	0-0	0-0	0	1	1	0	0	0	0	0	0	0	0	9
6	Magda Freire	G 05:18	0-0	0-0	0-0	0	0	0	1	1	0	0	0	0	0	0	7
10	Ana Barreto	G 05:53	1-3	1-2	0-0	0	0	0	0	0	3	0	0	0	0	0	1
12	Aylesha Wade	G 06:54	1-1	0-0	0-0	0	1	1	0	0	2	1	0	2	0	0	6
8	Tamar Kopilevech	02:41	0-1	0-1	0-0	0	0	0	0	0	0	0	0	0	0	0	-4
22	Dayuna Colvin	02:41	0-0	0-0	2-2	0	0	0	0	1	2	0	0	0	0	0	-2
3	Jermamy Mapp	02:15	1-2	0-0	0-0	0	0	0	1	0	2	0	0	1	0	0	2
24	Tiziana Huici	04:07	0-0	0-0	0-0	0	0	0	0	0	0	1	1	1	0	0	4
4	Kaitlyn Adams	02:56	2-2	0-0	1-2	0	1	1	0	1	5	0	0	0	0	0	4
11	Kamara Mills	02:01	0-0	0-0	0-0	0	0	0	0	0	0	0	0	0	0	0	0
1	Alyssa Lewis	03:06	0-0	0-0	0-0	0	0	0	0	0	0	0	0	0	0	0	-1
Team						0	1	1			0		0				
<b>Totals</b>			5-10	1-3	5-6	0	4	4	2	4	16	2	3	4	0	0	5

Shooting By Period		
4 <sup>th</sup> FG%	5-10	50.0%
3PT%	1-3	33.3%
FT%	5-6	83.3%
GM FG%	5-10	50.0%
3PT%	1-3	33.3%
FT%	5-6	83.3%

Dead Ball Rebounds: 1, 0

Technical Fouls::NONE

**Kentucky - 11**

NO.	Name	Min	FG			Rebounds			Fouls		TP	AS	TO	ST	Blocks		+/-
			M-A	M-A	M-A	OR	DR	TOT	PF	FD					BS	BA	
7	Teonni Key	F 03:45	0-1	0-0	0-0	2	1	3	0	1	0	0	1	1	0	0	0
32	Amelia Hassett	F 05:53	1-2	0-1	0-0	0	1	1	1	0	2	0	2	1	0	0	-1
13	Clara Strack	C 03:19	2-3	0-1	0-0	2	0	2	0	0	4	0	1	0	0	0	-1
3	Georgia Amoore	G 02:41	0-1	0-1	0-0	0	0	0	0	0	0	2	0	0	0	0	4
10	Dazia Lawrence	G 05:53	0-0	0-0	0-0	0	1	1	0	0	0	1	0	0	0	0	-1
8	Tanah Becker	04:42	0-1	0-1	0-0	1	0	1	2	0	0	0	0	1	0	0	4
2	Saniah Tyler	07:19	1-2	1-2	0-0	0	1	1	0	0	3	1	0	0	0	0	-9
4	Lexi Blue	05:18	1-2	0-1	0-0	0	0	0	0	0	2	0	1	0	0	0	-9
5	Cassidy Rowe	04:07	0-1	0-1	0-0	0	0	0	0	0	0	0	0	0	0	0	-4
17	Clara Silva	04:07	0-4	0-0	0-0	1	1	2	1	0	0	1	1	0	0	0	-4
11	Gabby Brooks	02:56	0-0	0-0	0-0	0	0	0	0	1	0	0	0	0	0	0	-4
Team						1	0	1			0		0				
<b>Totals</b>			5-17	1-8	0-0	7	5	12	4	2	11	5	6	3	0	0	-5

Shooting By Period		
4 <sup>th</sup> FG%	5-17	29.4%
3PT%	1-8	12.5%
FT%	0-0	0%
GM FG%	5-17	29.4%
3PT%	1-8	12.5%
FT%	0-0	0.0%

Dead Ball Rebounds: 1, 0

Technical Fouls::NONE

	QNS	UKY
Biggest lead	0 (1 <sup>st</sup> 10:00)	51 (4 <sup>th</sup> 7:46)
Best Scoring Run	8(4 <sup>th</sup> 1:07)	6(4 <sup>th</sup> 7:46)
Lead Changes	0	
Times Tied	0	
Time with Lead	00:00	09:33

	QNS	UKY
Points from		
Turnovers	4	2
Paint	8	4
Second Chance	0	5
Fast Breaks	6	4
Bench	9	5

	Period by Period Scoring				
	1st	2nd	3rd	4th	TOT
QNS	9	9	11	16	45
UKY	29	23	24	11	87



Officials: Natasha Camy, Nykeshia Thompson, Charles Watson

**Queens (NC) - 27**

NO.	Name	Min	FG			Rebounds			Fouls		TP	AS	TO	ST	Blocks		+/-
			M-A	M-A	M-A	OR	DR	TOT	PF	FD					BS	BA	
0	Jordyn Weaver	F 13:08	0-2	0-0	3-4	0	0	0	1	2	3	0	2	0	0	0	-11
32	Kemia Ward	F 07:32	0-0	0-0	0-0	0	1	1	2	0	0	0	0	0	0	0	9
6	Magda Freire	G 05:57	0-1	0-0	0-0	0	0	0	2	1	0	0	0	0	0	0	7
10	Ana Barreto	G 13:14	2-6	2-5	0-0	0	1	1	0	0	6	0	2	0	0	0	-6
12	Aylesha Wade	G 12:49	1-5	0-2	3-4	1	1	2	1	3	5	1	1	2	0	0	3
8	Tamar Kopilevch	12:29	0-2	0-1	0-0	0	2	2	1	0	0	0	0	0	0	0	-17
22	Dayuna Colvin	12:02	1-3	0-1	2-2	1	2	3	1	1	4	0	1	0	0	1	-15
3	Jermamy Mapp	04:53	1-2	0-0	0-0	0	0	0	1	0	2	0	0	1	0	0	-4
4	Kaitlyn Adams	04:37	3-3	0-0	1-2	0	2	2	2	1	7	0	0	0	0	0	1
11	Kamara Mills	04:33	0-1	0-1	0-0	0	0	0	0	0	0	0	1	0	0	0	-8
1	Alyssa Lewis	04:39	0-1	0-0	0-0	0	1	1	0	0	0	0	0	0	0	0	-3
24	Tiziana Huici	04:07	0-0	0-0	0-0	0	0	0	0	0	0	1	1	1	0	0	4
Team						1	1	2			0		0				
<b>Totals</b>			8-26	2-10	9-12	3	11	14	11	8	27	2	8	4	0	1	-8

Shooting By Period		
3rd FG%	3-16	18.8%
3PT%	1-7	14.3%
FT%	4-6	66.7%
4th FG%	5-10	50.0%
3PT%	1-3	33.3%
FT%	5-6	83.3%
GM FG%	8-26	30.8%
3PT%	2-10	20.0%
FT%	9-12	75.0%

Dead Ball Rebounds: 4, 0

Technical Fouls::NONE

**Kentucky - 35**

NO.	Name	Min	FG			Rebounds			Fouls		TP	AS	TO	ST	Blocks		+/-
			M-A	M-A	M-A	OR	DR	TOT	PF	FD					BS	BA	
7	Teonni Key	F 12:58	2-3	0-0	4-4	3	4	7	0	4	8	0	1	1	1	0	11
32	Amelia Hassett	F 13:39	2-4	0-2	2-2	0	2	2	2	1	6	1	2	1	0	0	6
13	Clara Strack	C 09:14	2-5	0-2	0-0	2	1	3	0	1	4	0	2	0	0	0	2
3	Georgia Amooore	G 08:27	1-4	1-3	3-4	0	1	1	1	2	6	2	1	0	0	0	6
10	Dazia Lawrence	G 11:01	0-1	0-0	0-0	0	1	1	1	1	0	2	0	0	0	0	0
4	Lexi Blue	11:13	2-3	0-1	0-0	0	1	1	0	0	4	0	1	0	0	0	5
17	Clara Silva	08:59	1-6	0-0	2-2	2	1	3	2	1	4	1	2	0	0	0	8
5	Cassidy Rowe	07:18	0-2	0-2	0-0	0	1	1	0	0	0	2	0	0	0	0	5
11	Gabby Brooks	05:10	0-0	0-0	0-0	0	0	0	0	1	0	0	0	0	0	0	2
8	Tanah Becker	04:42	0-1	0-1	0-0	1	0	1	2	0	0	0	0	1	0	0	4
2	Saniah Tyler	07:19	1-2	1-2	0-0	0	1	1	0	0	3	1	0	0	0	0	-9
Team						1	1	2			0		0				
<b>Totals</b>			11-31	2-13	11-12	9	14	23	8	11	35	9	9	3	1	0	8

Shooting By Period		
3rd FG%	6-14	42.9%
3PT%	1-5	20.0%
FT%	11-12	91.7%
4th FG%	5-17	29.4%
3PT%	1-8	12.5%
FT%	0-0	0%
GM FG%	11-31	35.5%
3PT%	2-13	15.4%
FT%	11-12	91.7%

Dead Ball Rebounds: 1, 0

Technical Fouls::NONE

	QNS	UKY
Biggest lead	0 (1 <sup>st</sup> 10:00)	51 (4 <sup>th</sup> 7:46)
Best Scoring Run	8(4 <sup>th</sup> 1:07)	8(3 <sup>rd</sup> 0:02)
Lead Changes	0	
Times Tied	0	
Time with Lead	00:00	19:45

	QNS	UKY
Points from		
Turnovers	6	5
Paint	12	14
Second Chance	0	9
Fast Breaks	6	6
Bench	13	11

	Period by Period Scoring				
	1st	2nd	3rd	4th	TOT
QNS	9	9	11	16	45
UKY	29	23	24	11	87



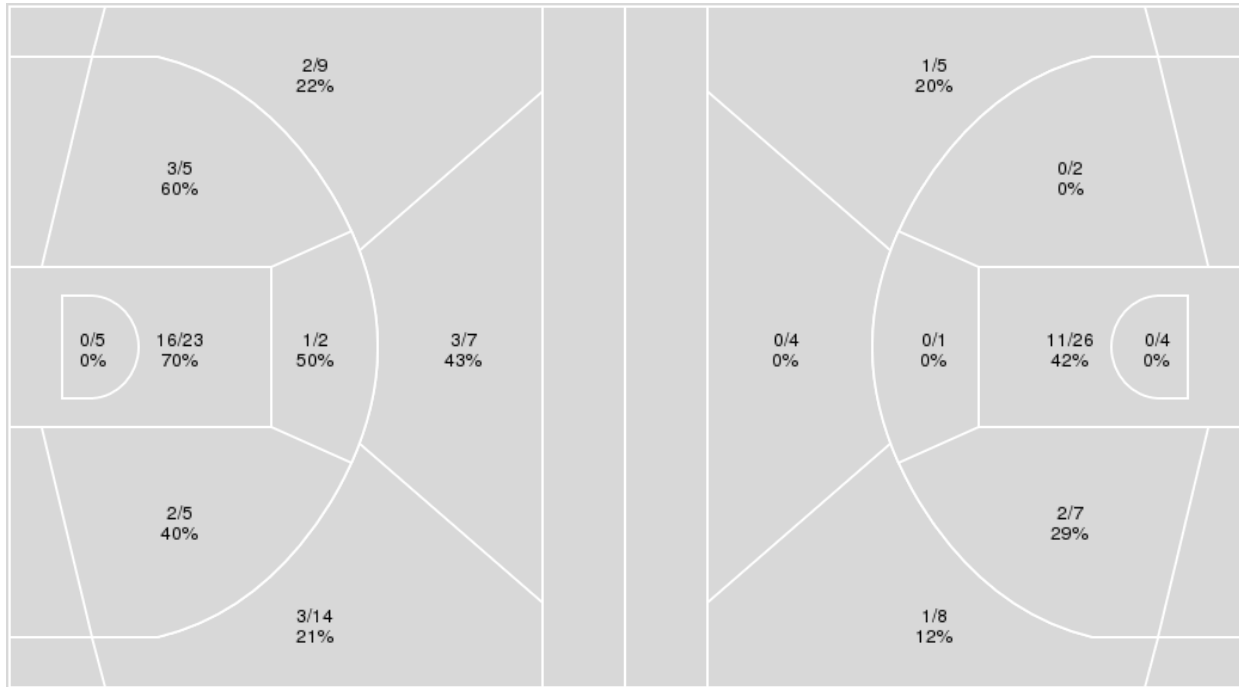
**Officials:** Natasha Camy, Nykeshia Thompson, Charles Watson

{ Players => 0, 2, 3, 4, 5, 7, 8, 10, 11, 12, 13, 17, 32; } FG Types => All;  
 Results => All;

{ Players => 0, 1, 3, 4, 5, 6, 7, 8, 10, 11, 12, 22, 24, 32; } FG Types =>  
 All; Results => All;

**Kentucky**

**Queens (NC)**



Kentucky	M/A	%
Field Goals	30/70	43
2 Points	22/40	55
3 Points	8/30	27
Free Throws	19/20	95

Queens (NC)	M/A	%
Field Goals	15/57	26
2 Points	13/40	32
3 Points	2/17	12
Free Throws	13/20	65



**Queens (NC) at Kentucky**

12/09/24 Historic Memorial Coliseum, Lexington, KY  
2024-25 Women's Basketball

**Game Time:** 6:00 PM  
**Game Duration:** 1:46  
**Attendance:** 4,193

**Officials:** Natasha Camy, Nykeshia Thompson, Charles Watson

**Queens (NC)**

No	Name	Mins		Score		Points Diff		Points per Min		Assists		Rebounds		Steals		Turnovers	
		On	Off	On	Off	On	Off	On	Off	On	Off	On	Off	On	Off	On	Off
0	Jordyn Weaver	27:11	12:49	26 - 64	19 - 23	-38	-4	0.96	1.48	4	3	24	10	3	4	15	4
1	Alyssa Lewis	10:02	29:58	10 - 16	35 - 71	-6	-36	1.00	1.17	2	5	10	24	0	7	4	15
3	Jermamy Mapp	16:50	23:11	21 - 38	24 - 49	-17	-25	1.25	1.04	5	2	15	19	3	4	7	12
4	Kaitlyn Adams	07:18	32:42	10 - 13	35 - 74	-3	-39	1.37	1.07	1	6	7	27	2	5	4	15
6	Magda Freire	15:55	24:05	18 - 31	27 - 56	-13	-29	1.13	1.12	4	3	11	23	5	2	7	12
8	Tamar Kopilevech	28:37	11:23	29 - 75	16 - 12	-46	4	1.01	1.41	5	2	25	9	3	4	14	5
10	Ana Barreto	31:46	08:14	35 - 70	10 - 17	-35	-7	1.10	1.21	6	1	29	5	5	2	15	4
11	Kamara Mills	04:33	35:27	6 - 14	39 - 73	-8	-34	1.32	1.10	0	7	2	32	1	6	2	17
12	Aylesha Wade	20:57	19:03	25 - 38	20 - 49	-13	-29	1.19	1.05	3	4	20	14	5	2	11	8
22	Dayuna Colvin	20:26	19:34	22 - 56	23 - 31	-34	-8	1.08	1.18	2	5	15	19	2	5	9	10
24	Tiziana Huici	05:35	34:25	7 - 8	38 - 79	-1	-41	1.25	1.10	1	6	4	30	2	5	2	17
32	Kemia Ward	10:50	29:10	16 - 12	29 - 75	4	-46	1.48	0.99	2	5	8	26	4	3	5	14

**Kentucky**

No	Name	Mins		Score		Points Diff		Points per Min		Assists		Rebounds		Steals		Turnovers	
		On	Off	On	Off	On	Off	On	Off	On	Off	On	Off	On	Off	On	Off
2	Saniah Tyler	11:48	28:12	15 - 22	72 - 23	-7	49	1.27	2.55	5	19	13	33	2	3	8	7
3	Georgia Amore	22:57	17:03	59 - 29	28 - 16	30	12	2.57	1.64	16	8	23	23	2	3	7	8
4	Lexi Blue	21:04	18:56	42 - 24	45 - 21	18	24	1.99	2.38	8	16	28	18	2	3	10	5
5	Cassidy Rowe	13:47	26:13	26 - 9	61 - 36	17	25	1.89	2.33	7	17	20	26	2	3	5	10
7	Teonni Key	25:49	14:11	61 - 30	26 - 15	31	11	2.36	1.83	16	8	31	15	2	3	11	4
8	Tanah Becker	04:42	35:18	9 - 5	78 - 40	4	38	1.91	2.21	4	20	4	42	2	3	1	14
10	Dazia Lawrence	25:33	14:27	57 - 27	30 - 18	30	12	2.23	2.08	18	6	27	19	4	1	9	6
11	Gabby Brooks	05:10	34:50	9 - 7	78 - 38	2	40	1.74	2.24	2	22	5	41	1	4	3	12
13	Clara Strack	26:08	13:52	59 - 27	28 - 18	32	10	2.26	2.02	18	6	26	20	3	2	7	8
17	Clara Silva	14:19	25:41	35 - 16	52 - 29	19	23	2.44	2.02	8	16	19	27	2	3	5	10
32	Amelia Hassett	28:43	11:17	63 - 29	24 - 16	34	8	2.19	2.13	18	6	34	12	3	2	9	6

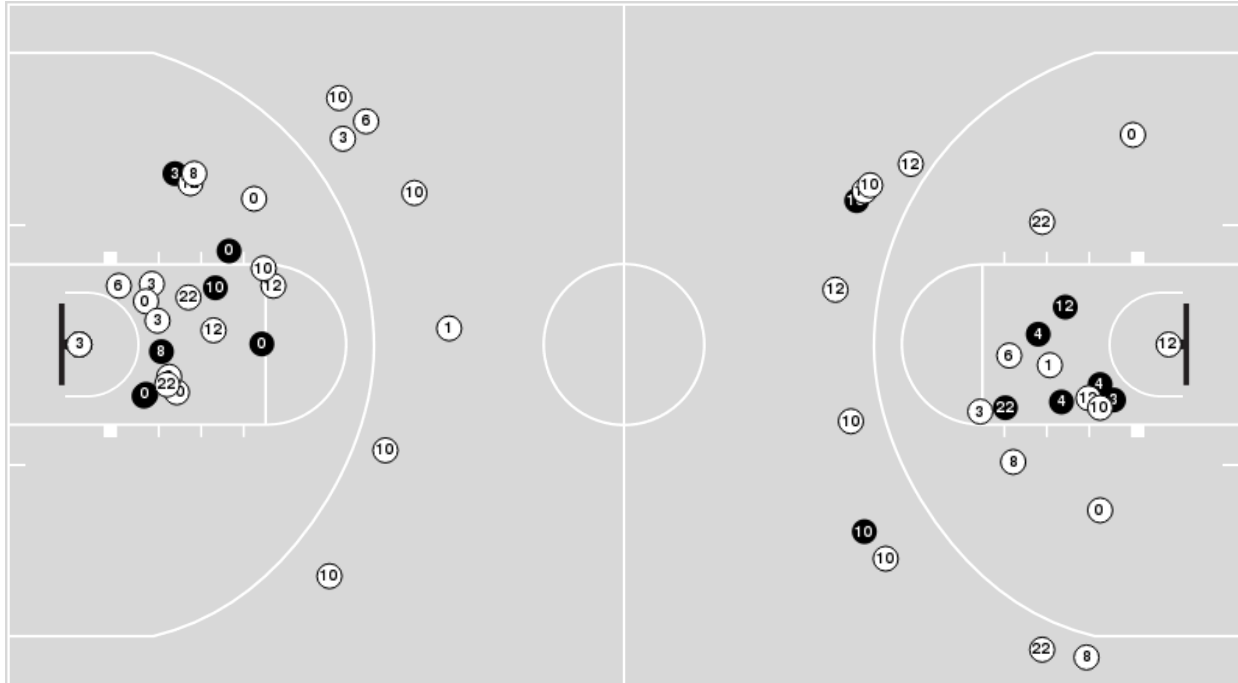


**Officials:** Natasha Camy, Nykeshia Thompson, Charles Watson

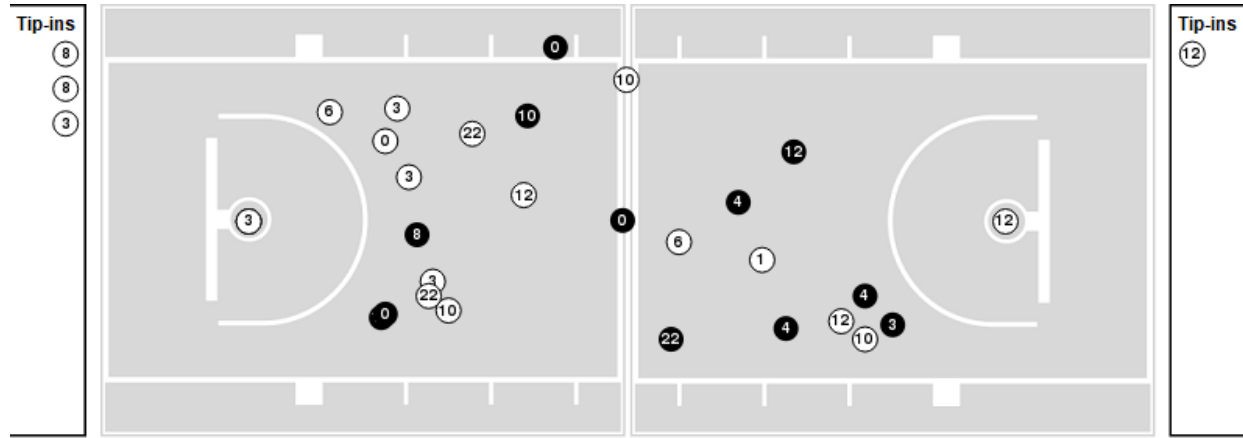
Players => 0, 1, 3, 4, 5, 6, 7, 8, 10, 11, 12, 22, 24, 32FG Types=>AllResults=>All

**Queens (NC)**

**All Field Goals**



**Blow Up Chart**



● Made ○ Missed N - Player Number

Queens (NC)	M/A	%
Field Goals	15/57	26
2 Points	13/40	32
3 Points	2/17	12
Free Throws	13/20	65

Queens (NC)	M/A	%
Points in the Paint	22 (11 / 30)	37
Fast Break Points	6 (3/3)	100
Second Chance Points	2 (1/9)	11
Effective FG%	28	

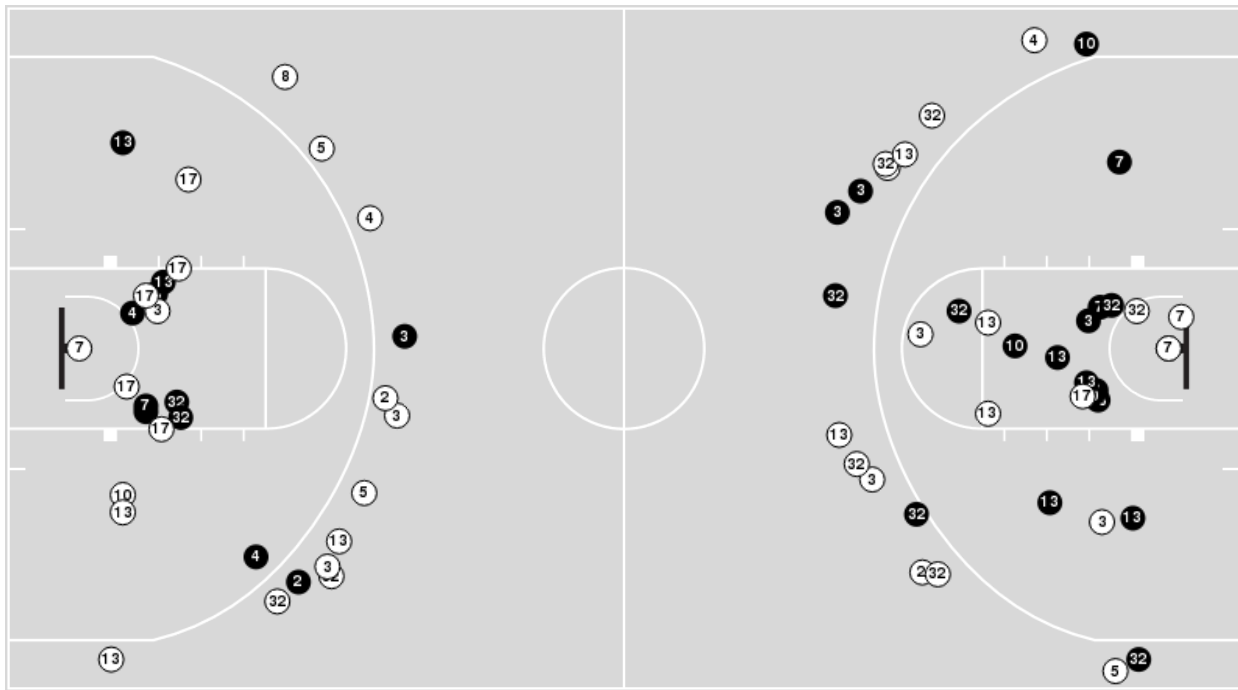


**Officials:** Natasha Camy, Nykeshia Thompson, Charles Watson

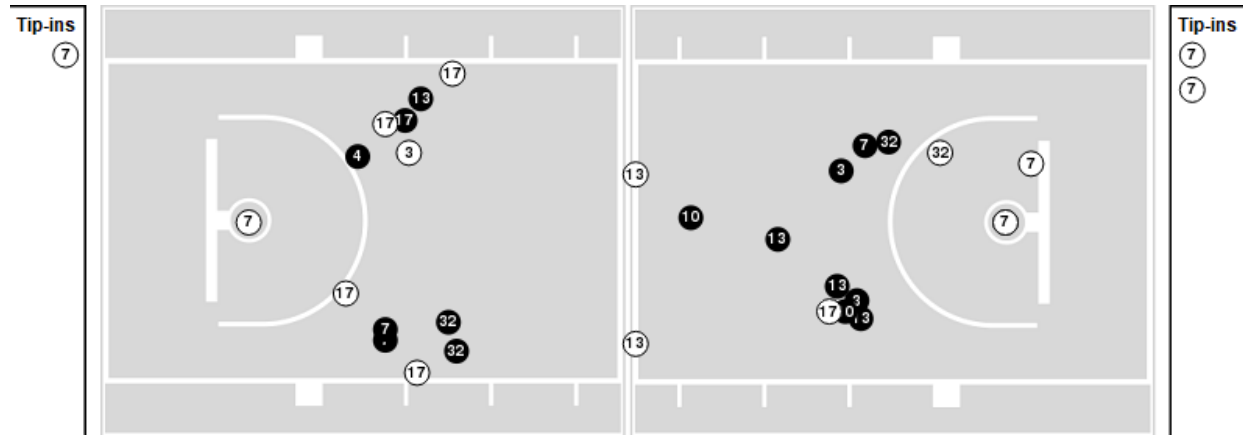
Players => 0, 2, 3, 4, 5, 7, 8, 10, 11, 12, 13, 17, 32FG Types=>AllResults=>All

### Kentucky

#### All Field Goals



#### Blow Up Chart



● Made ○ Missed N - Player Number

Kentucky	M/A	%
Field Goals	30/70	43
2 Points	22/40	55
3 Points	8/30	27
Free Throws	19/20	95

Kentucky	M/A	%
Points in the Paint	32 (16 / 28)	57
Fast Break Points	12 (7/7)	100
Second Chance Points	13 (8/18)	44
Effective FG%	49	





**Officials:** Natasha Camy, Nykeshia Thompson, Charles Watson

**Queens (NC)**

Lineup	Quarter On	Time On	Quarter Off	Time Off	Time on Court	Score	Score Diff	Reb	Stl	Tov	Ass	PPP
0- Weaver J/ 6- Freire M/ 10- Barreto A/ 12- Wade A/ 32- Ward K/	1	10:00	1	06:42	03:18	2-7	-5	4	0	3	0	0.3333
0- Weaver J/ 6- Freire M/ 8- Kopilevech T/ 10- Barreto A/ 12- Wade A/	1	06:42	1	05:11	01:31	0-5	-5	1	0	1	0	0.0000
3- Mapp J/ 8- Kopilevech T/ 10- Barreto A/ 12- Wade A/ 22- Colvin D/	1	05:11	1	03:16	01:55	0-4	-4	3	0	0	0	0.0000
3- Mapp J/ 6- Freire M/ 8- Kopilevech T/ 10- Barreto A/ 22- Colvin D/	1	03:16	1	00:01	03:14	7-11	-4	1	1	1	2	1.0174
0- Weaver J/ 6- Freire M/ 8- Kopilevech T/ 10- Barreto A/ 22- Colvin D/	1	00:01	2	08:15	01:46	0-6	-6	1	1	1	0	0.0000
0- Weaver J/ 6- Freire M/ 8- Kopilevech T/ 22- Colvin D/ 24- Huici T/	2	08:15	2	08:07	00:08	0-0	0	0	0	0	0	0.0000
0- Weaver J/ 4- Adams K/ 8- Kopilevech T/ 22- Colvin D/ 24- Huici T/	2	08:07	2	06:47	01:20	0-5	-5	1	0	1	0	0.0000
0- Weaver J/ 3- Mapp J/ 8- Kopilevech T/ 10- Barreto A/ 12- Wade A/	2	06:47	2	05:23	01:24	4-6	-2	1	1	1	1	1.3889
0- Weaver J/ 1- Lewis A/ 3- Mapp J/ 8- Kopilevech T/ 10- Barreto A/	2	05:23	2	01:21	04:02	4-8	-4	5	0	3	2	0.5714
1- Lewis A/ 3- Mapp J/ 4- Adams K/ 8- Kopilevech T/ 10- Barreto A/	2	01:21	2	00:33	00:47	1-0	1	2	0	0	0	0.3472
0- Weaver J/ 1- Lewis A/ 3- Mapp J/ 4- Adams K/ 10- Barreto A/	2	00:33	3	10:00	00:33	0-0	0	1	0	0	0	0.0000
0- Weaver J/ 6- Freire M/ 10- Barreto A/ 12- Wade A/ 32- Ward K/	3	10:00	3	09:48	00:12	0-0	0	0	0	0	0	0.0000
0- Weaver J/ 6- Freire M/ 8- Kopilevech T/ 12- Wade A/ 32- Ward K/	3	09:48	3	09:47	00:01	0-0	0	0	0	0	0	0.0000
0- Weaver J/ 6- Freire M/ 8- Kopilevech T/ 10- Barreto A/ 12- Wade A/	3	09:47	3	09:21	00:26	0-0	0	1	0	0	0	0.0000
0- Weaver J/ 8- Kopilevech T/ 10- Barreto A/ 12- Wade A/ 22- Colvin D/	3	09:21	3	04:52	04:29	8-9	-1	6	0	3	0	0.8197
3- Mapp J/ 4- Adams K/ 8- Kopilevech T/ 12- Wade A/ 22- Colvin D/	3	04:52	3	04:05	00:47	0-2	-2	0	0	1	0	0.0000
3- Mapp J/ 4- Adams K/ 8- Kopilevech T/ 11- Mills K/ 22- Colvin D/	3	04:05	3	03:11	00:54	2-3	-1	1	0	1	0	1.0000
0- Weaver J/ 3- Mapp J/ 8- Kopilevech T/ 11- Mills K/ 22- Colvin D/	3	03:11	3	02:14	00:57	1-4	-3	0	0	0	0	0.5319
0- Weaver J/ 8- Kopilevech T/ 10- Barreto A/ 11- Mills K/ 22- Colvin D/	3	02:14	3	01:33	00:41	0-4	-4	0	0	0	0	0.0000
0- Weaver J/ 1- Lewis A/ 8- Kopilevech T/ 10- Barreto A/ 22- Colvin D/	3	01:33	4	07:19	04:14	2-8	-6	2	0	1	0	0.4098
0- Weaver J/ 1- Lewis A/ 10- Barreto A/ 22- Colvin D/ 32- Ward K/	4	07:19	4	07:19	00:00	2-0	2	0	0	0	0	2.2727
0- Weaver J/ 6- Freire M/ 10- Barreto A/ 12- Wade A/ 32- Ward K/	4	07:19	4	05:11	02:08	3-2	1	1	1	1	1	0.7500
3- Mapp J/ 6- Freire M/ 10- Barreto A/ 12- Wade A/ 32- Ward K/	4	05:11	4	04:07	01:04	2-0	2	0	1	0	0	1.0000
3- Mapp J/ 6- Freire M/ 12- Wade A/ 24- Huici T/ 32- Ward K/	4	04:07	4	02:56	01:11	0-0	0	1	0	0	0	0.0000
4- Adams K/ 6- Freire M/ 12- Wade A/ 24- Huici T/ 32- Ward K/	4	02:56	4	02:01	00:55	4-0	4	1	1	0	1	2.0000
4- Adams K/ 11- Mills K/ 12- Wade A/ 24- Huici T/ 32- Ward K/	4	02:01	4	00:24	01:36	2-3	-1	1	1	1	0	1.0000
1- Lewis A/ 4- Adams K/ 11- Mills K/ 24- Huici T/ 32- Ward K/	4	00:24	4	00:00	00:24	1-0	1	0	0	0	0	1.1364



**Officials:** Natasha Camy, Nykeshia Thompson, Charles Watson

**Kentucky**

Lineup	Quarter On	Time On	Quarter Off	Time Off	Time on Court	Score	Score Diff	Reb	Stl	Tov	Ass	PPP
3- Amooore G/ 7- Key T/ 10- Lawrence D/ 13- Strack C/ 32- Hassett A/	1	10:00	1	05:11	04:49	12-2	10	5	0	0	5	1.3333
4- Blue L/ 5- Rowe C/ 10- Lawrence D/ 13- Strack C/ 32- Hassett A/	1	05:11	1	04:15	00:56	2-0	2	1	0	0	1	1.0000
3- Amooore G/ 4- Blue L/ 5- Rowe C/ 7- Key T/ 32- Hassett A/	1	04:15	1	03:16	00:59	2-0	2	3	0	1	0	0.6944
3- Amooore G/ 4- Blue L/ 5- Rowe C/ 7- Key T/ 13- Strack C/	1	03:16	1	03:16	00:00	0-0	0	0	0	0	0	0.0000
3- Amooore G/ 4- Blue L/ 7- Key T/ 10- Lawrence D/ 13- Strack C/	1	03:16	2	10:00	03:16	13-7	6	3	1	2	3	1.5625
5- Rowe C/ 10- Lawrence D/ 13- Strack C/ 17- Silva C/ 32- Hassett A/	2	10:00	2	06:47	03:13	9-0	9	4	1	1	3	1.2857
2- Tyler S/ 3- Amooore G/ 7- Key T/ 17- Silva C/ 32- Hassett A/	2	06:47	2	04:40	02:07	8-6	2	3	0	1	2	1.8519
2- Tyler S/ 3- Amooore G/ 4- Blue L/ 7- Key T/ 13- Strack C/	2	04:40	2	03:00	01:40	2-2	0	0	0	1	1	1.0000
2- Tyler S/ 3- Amooore G/ 4- Blue L/ 13- Strack C/ 32- Hassett A/	2	03:00	2	02:18	00:42	0-0	0	1	0	0	0	0.0000
3- Amooore G/ 4- Blue L/ 10- Lawrence D/ 13- Strack C/ 32- Hassett A/	2	02:18	2	01:21	00:57	4-0	4	1	0	0	0	2.0000
4- Blue L/ 5- Rowe C/ 10- Lawrence D/ 13- Strack C/ 32- Hassett A/	2	01:21	3	10:00	01:21	0-1	-1	2	0	0	0	0.0000
3- Amooore G/ 7- Key T/ 10- Lawrence D/ 13- Strack C/ 32- Hassett A/	3	10:00	3	05:55	04:05	7-8	-1	2	0	2	2	0.7883
4- Blue L/ 7- Key T/ 10- Lawrence D/ 13- Strack C/ 32- Hassett A/	3	05:55	3	04:52	01:03	2-0	2	2	0	0	0	1.0000
3- Amooore G/ 4- Blue L/ 13- Strack C/ 17- Silva C/ 32- Hassett A/	3	04:52	3	04:05	00:47	2-0	2	2	0	0	0	2.2727
3- Amooore G/ 4- Blue L/ 7- Key T/ 17- Silva C/ 32- Hassett A/	3	04:05	3	03:11	00:54	3-2	1	0	0	0	0	1.7045
4- Blue L/ 5- Rowe C/ 7- Key T/ 17- Silva C/ 32- Hassett A/	3	03:11	3	02:14	00:57	4-1	3	1	0	0	1	2.1277
4- Blue L/ 5- Rowe C/ 7- Key T/ 11- Brooks G/ 17- Silva C/	3	02:14	4	10:00	02:14	6-0	6	4	0	1	1	1.2295
3- Amooore G/ 8- Becker T/ 10- Lawrence D/ 13- Strack C/ 32- Hassett A/	4	10:00	4	07:19	02:41	6-2	4	3	1	0	3	2.0000
2- Tyler S/ 4- Blue L/ 10- Lawrence D/ 13- Strack C/ 32- Hassett A/	4	07:19	4	06:41	00:38	0-5	-5	0	0	1	0	0.0000
2- Tyler S/ 4- Blue L/ 7- Key T/ 10- Lawrence D/ 32- Hassett A/	4	06:41	4	04:07	02:34	2-2	0	4	1	3	1	0.4000
2- Tyler S/ 4- Blue L/ 5- Rowe C/ 7- Key T/ 17- Silva C/	4	04:07	4	02:56	01:11	0-0	0	4	0	0	0	0.0000
2- Tyler S/ 4- Blue L/ 5- Rowe C/ 11- Brooks G/ 17- Silva C/	4	02:56	4	02:01	00:55	0-4	-4	0	0	1	0	0.0000
2- Tyler S/ 5- Rowe C/ 8- Becker T/ 11- Brooks G/ 17- Silva C/	4	02:01	4	00:00	02:01	3-3	0	1	1	1	1	1.0000



**Officials:** Natasha Camy, Nykeshia Thompson, Charles Watson

**Queens (NC)**

Lineup	Time	Score	Score Diff	Pts/Min	Reb	Stl	Tov	Ass	PPP
0- Weaver J/ 6- Freire M/ 10- Barreto A/ 12- Wade A/ 32- Ward K/	05:38	5-9	-4	0.8876	5	1	4	1	0.5000
0- Weaver J/ 8- Kopilevech T/ 10- Barreto A/ 12- Wade A/ 22- Colvin D/	04:29	8-9	-1	1.7844	6	0	3	0	0.8197
0- Weaver J/ 1- Lewis A/ 8- Kopilevech T/ 10- Barreto A/ 22- Colvin D/	04:14	2-8	-6	0.4724	2	0	1	0	0.4098
0- Weaver J/ 1- Lewis A/ 3- Mapp J/ 8- Kopilevech T/ 10- Barreto A/	04:02	4-8	-4	0.9917	5	0	3	2	0.5714
3- Mapp J/ 6- Freire M/ 8- Kopilevech T/ 10- Barreto A/ 22- Colvin D/	03:14	7-11	-4	2.1594	1	1	1	2	1.0174
0- Weaver J/ 6- Freire M/ 8- Kopilevech T/ 10- Barreto A/ 12- Wade A/	01:57	0-5	-5	0.0000	2	0	1	0	0.0000
3- Mapp J/ 8- Kopilevech T/ 10- Barreto A/ 12- Wade A/ 22- Colvin D/	01:55	0-4	-4	0.0000	3	0	0	0	0.0000
0- Weaver J/ 6- Freire M/ 8- Kopilevech T/ 10- Barreto A/ 22- Colvin D/	01:46	0-6	-6	0.0000	1	1	1	0	0.0000
4- Adams K/ 11- Mills K/ 12- Wade A/ 24- Huici T/ 32- Ward K/	01:36	2-3	-1	1.2487	1	1	1	0	1.0000
0- Weaver J/ 3- Mapp J/ 8- Kopilevech T/ 10- Barreto A/ 12- Wade A/	01:24	4-6	-2	2.8571	1	1	1	1	1.3889
0- Weaver J/ 4- Adams K/ 8- Kopilevech T/ 22- Colvin D/ 24- Huici T/	01:20	0-5	-5	0.0000	1	0	1	0	0.0000
3- Mapp J/ 6- Freire M/ 12- Wade A/ 24- Huici T/ 32- Ward K/	01:11	0-0	0	0.0000	1	0	0	0	0.0000
3- Mapp J/ 6- Freire M/ 10- Barreto A/ 12- Wade A/ 32- Ward K/	01:04	2-0	2	1.8750	0	1	0	0	1.0000
0- Weaver J/ 3- Mapp J/ 8- Kopilevech T/ 11- Mills K/ 22- Colvin D/	00:57	1-4	-3	1.0526	0	0	0	0	0.5319
4- Adams K/ 6- Freire M/ 12- Wade A/ 24- Huici T/ 32- Ward K/	00:55	4-0	4	4.3636	1	1	0	1	2.0000
3- Mapp J/ 4- Adams K/ 8- Kopilevech T/ 11- Mills K/ 22- Colvin D/	00:54	2-3	-1	2.2222	1	0	1	0	1.0000
1- Lewis A/ 3- Mapp J/ 4- Adams K/ 8- Kopilevech T/ 10- Barreto A/	00:47	1-0	1	1.2658	2	0	0	0	0.3472
3- Mapp J/ 4- Adams K/ 8- Kopilevech T/ 12- Wade A/ 22- Colvin D/	00:47	0-2	-2	0.0000	0	0	1	0	0.0000
0- Weaver J/ 8- Kopilevech T/ 10- Barreto A/ 11- Mills K/ 22- Colvin D/	00:41	0-4	-4	0.0000	0	0	0	0	0.0000
0- Weaver J/ 1- Lewis A/ 3- Mapp J/ 4- Adams K/ 10- Barreto A/	00:33	0-0	0	0.0000	1	0	0	0	0.0000
1- Lewis A/ 4- Adams K/ 11- Mills K/ 24- Huici T/ 32- Ward K/	00:24	1-0	1	2.4096	0	0	0	0	1.1364
0- Weaver J/ 6- Freire M/ 8- Kopilevech T/ 22- Colvin D/ 24- Huici T/	00:08	0-0	0	0.0000	0	0	0	0	0.0000
0- Weaver J/ 6- Freire M/ 8- Kopilevech T/ 12- Wade A/ 32- Ward K/	00:01	0-0	0	0.0000	0	0	0	0	0.0000
0- Weaver J/ 1- Lewis A/ 10- Barreto A/ 22- Colvin D/ 32- Ward K/	00:00	2-0	2	∞	0	0	0	0	2.2727



**Officials:** Natasha Camy, Nykeshia Thompson, Charles Watson

**Kentucky**

Lineup	Time	Score	Score Diff	Pts/Min	Reb	Stl	Tov	Ass	PPP
3- Amoores G/ 7- Key T/ 10- Lawrence D/ 13- Strack C/ 32- Hassett A/	08:54	19-10	9	2.1348	7	0	2	7	1.0626
3- Amoores G/ 4- Blue L/ 7- Key T/ 10- Lawrence D/ 13- Strack C/	03:16	13-7	6	3.9796	3	1	2	3	1.5625
5- Rowe C/ 10- Lawrence D/ 13- Strack C/ 17- Silva C/ 32- Hassett A/	03:13	9-0	9	2.7979	4	1	1	3	1.2857
3- Amoores G/ 8- Becker T/ 10- Lawrence D/ 13- Strack C/ 32- Hassett A/	02:41	6-2	4	2.2360	3	1	0	3	2.0000
2- Tyler S/ 4- Blue L/ 7- Key T/ 10- Lawrence D/ 32- Hassett A/	02:34	2-2	0	0.7792	4	1	3	1	0.4000
4- Blue L/ 5- Rowe C/ 10- Lawrence D/ 13- Strack C/ 32- Hassett A/	02:17	2-1	1	0.8759	3	0	0	1	0.4000
4- Blue L/ 5- Rowe C/ 7- Key T/ 11- Brooks G/ 17- Silva C/	02:14	6-0	6	2.6866	4	0	1	1	1.2295
2- Tyler S/ 3- Amoores G/ 7- Key T/ 17- Silva C/ 32- Hassett A/	02:07	8-6	2	3.7795	3	0	1	2	1.8519
2- Tyler S/ 5- Rowe C/ 8- Becker T/ 11- Brooks G/ 17- Silva C/	02:01	3-3	0	1.4876	1	1	1	1	1.0000
2- Tyler S/ 3- Amoores G/ 4- Blue L/ 7- Key T/ 13- Strack C/	01:40	2-2	0	1.2000	0	0	1	1	1.0000
2- Tyler S/ 4- Blue L/ 5- Rowe C/ 7- Key T/ 17- Silva C/	01:11	0-0	0	0.0000	4	0	0	0	0.0000
4- Blue L/ 7- Key T/ 10- Lawrence D/ 13- Strack C/ 32- Hassett A/	01:03	2-0	2	1.9048	2	0	0	0	1.0000
3- Amoores G/ 4- Blue L/ 5- Rowe C/ 7- Key T/ 32- Hassett A/	00:59	2-0	2	2.0339	3	0	1	0	0.6944
3- Amoores G/ 4- Blue L/ 10- Lawrence D/ 13- Strack C/ 32- Hassett A/	00:57	4-0	4	4.2105	1	0	0	0	2.0000
4- Blue L/ 5- Rowe C/ 7- Key T/ 17- Silva C/ 32- Hassett A/	00:57	4-1	3	4.2105	1	0	0	1	2.1277
2- Tyler S/ 4- Blue L/ 5- Rowe C/ 11- Brooks G/ 17- Silva C/	00:55	0-4	-4	0.0000	0	0	1	0	0.0000
3- Amoores G/ 4- Blue L/ 7- Key T/ 17- Silva C/ 32- Hassett A/	00:54	3-2	1	3.3333	0	0	0	0	1.7045
3- Amoores G/ 4- Blue L/ 13- Strack C/ 17- Silva C/ 32- Hassett A/	00:47	2-0	2	2.5532	2	0	0	0	2.2727
2- Tyler S/ 3- Amoores G/ 4- Blue L/ 13- Strack C/ 32- Hassett A/	00:42	0-0	0	0.0000	1	0	0	0	0.0000
2- Tyler S/ 4- Blue L/ 10- Lawrence D/ 13- Strack C/ 32- Hassett A/	00:38	0-5	-5	0.0000	0	0	1	0	0.0000
3- Amoores G/ 4- Blue L/ 5- Rowe C/ 7- Key T/ 13- Strack C/	00:00	0-0	0	NaN	0	0	0	0	0.0000