

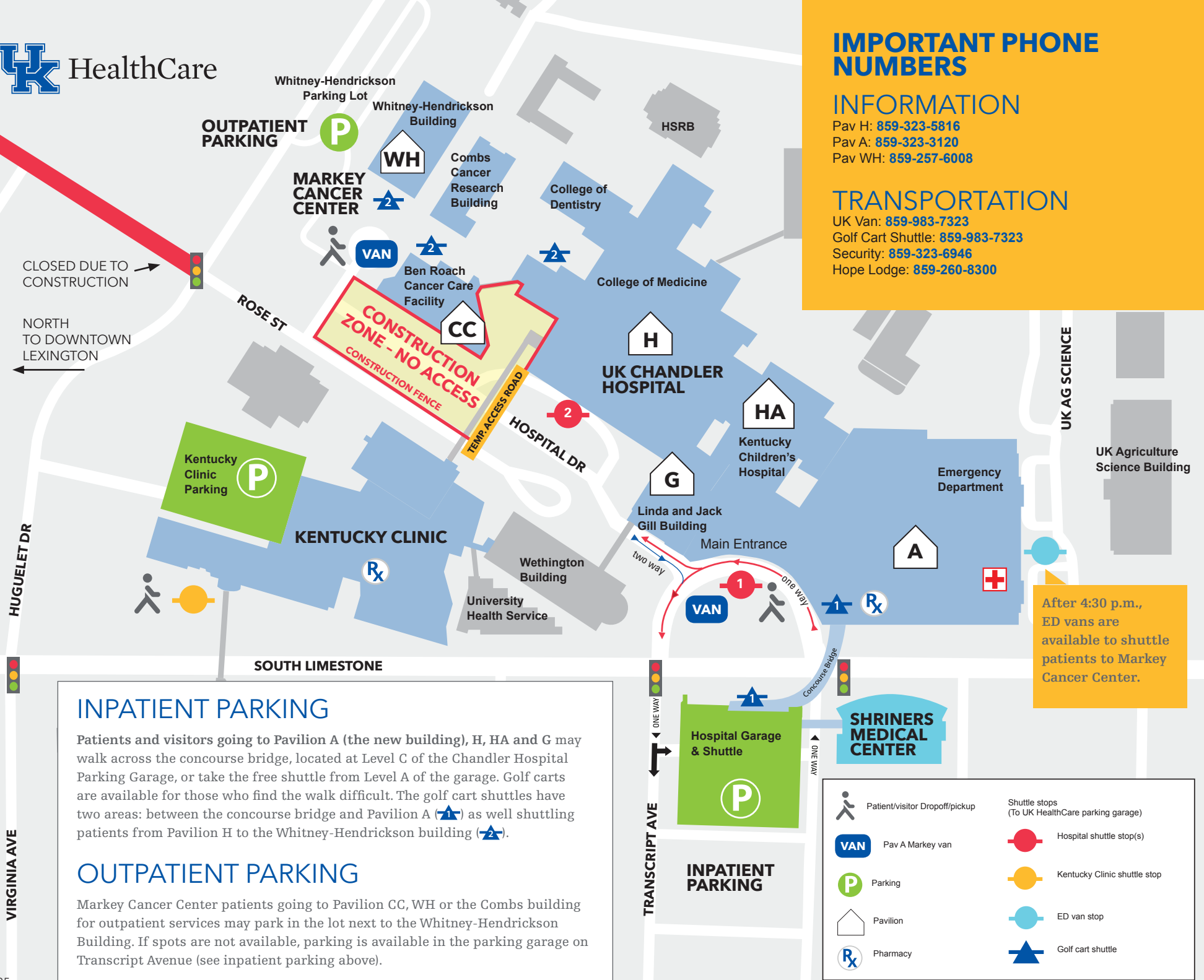
## IMPORTANT PHONE NUMBERS

### INFORMATION

Pav H: 859-323-5816  
 Pav A: 859-323-3120  
 Pav WH: 859-257-6008

### TRANSPORTATION

UK Van: 859-983-7323  
 Golf Cart Shuttle: 859-983-7323  
 Security: 859-323-6946  
 Hope Lodge: 859-260-8300



CLOSED DUE TO CONSTRUCTION

NORTH TO DOWNTOWN LEXINGTON

After 4:30 p.m., ED vans are available to shuttle patients to Markey Cancer Center.

### INPATIENT PARKING

Patients and visitors going to Pavilion A (the new building), H, HA and G may walk across the concourse bridge, located at Level C of the Chandler Hospital Parking Garage, or take the free shuttle from Level A of the garage. Golf carts are available for those who find the walk difficult. The golf cart shuttles have two areas: between the concourse bridge and Pavilion A (▲) as well shuttling patients from Pavilion H to the Whitney-Hendrickson building (▲).

### OUTPATIENT PARKING

Markey Cancer Center patients going to Pavilion CC, WH or the Combs building for outpatient services may park in the lot next to the Whitney-Hendrickson Building. If spots are not available, parking is available in the parking garage on Transcript Avenue (see inpatient parking above).

	Patient/visitor Dropoff/pickup		Shuttle stops (To UK HealthCare parking garage)
	Pav A Markey van		Hospital shuttle stop(s)
	Parking		Kentucky Clinic shuttle stop
	Pavilion		ED van stop
	Pharmacy		Golf cart shuttle

# DIRECTIONS

## FROM THE EAST OR THE WEST

Follow I-64 to Lexington, Exit 113 (labeled "Paris/Lexington").

## FROM THE NORTH

Follow I-75 South to Lexington, Exit 113 (labeled "Paris/Lexington").

## FROM EXIT 113

Turn right off the exit ramp onto US 68 West/KY 27 South, "Paris Pike" toward Lexington.

Drive 4.2 miles to Virginia Avenue.

Turn left onto Virginia Avenue.

Drive one-half mile to South Limestone.

Turn right onto S. Limestone and then right at the Transcript Avenue light to the Chandler Hospital Garage & Shuttle.

## FROM THE SOUTH

Follow I-75 North to Exit 104 (labeled "Athens/Lexington"). Turn left off the exit ramp onto Richmond Road toward Lexington. Drive 8.2 miles to South Broadway.

Turn left onto South Broadway. Drive one mile to Virginia Avenue.

Turn left onto Virginia Avenue. Drive one-half mile to South Limestone.

Turn right onto S. Limestone and then right at the Transcript Avenue light to the Chandler Hospital Garage & Shuttle.

## FROM U.S. 27 NORTH/NICHOLASVILLE ROAD

Follow U.S. 27 North/Nicholasville Road to Man O' War Boulevard.

Continue straight across Man O' War Boulevard.

Drive 3.9 miles to Transcript Avenue. Turn left at the light onto Transcript Avenue to the Hospital Garage & Shuttle.

## FROM U.S. 60/VERSAILLES ROAD

Follow U.S. 60 East to Man O' War Boulevard.

Continue on U.S. 60 past Man O' War Boulevard. Drive 3.8 miles to Red Mile Road.

Turn right onto Red Mile Road. Drive 1.1 miles to U.S. 68/South Broadway.

Continue across U.S. 68/South Broadway onto Virginia Avenue. Drive one-half mile to South Limestone.

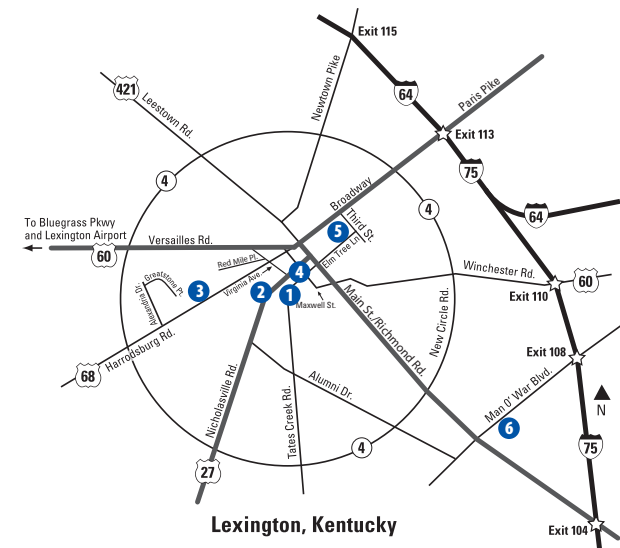
Turn right onto S. Limestone and then right at the Transcript Avenue light to the Chandler Hospital Garage & Shuttle.

## UK Chandler Hospital

1000 S. Limestone  
Lexington KY 40536  
859-323-5000

## Kentucky Clinic

740 S. Limestone  
Lexington KY 40536  
859-257-8562



- 1 UK HealthCare Main Campus
  - UK Chandler Hospital
  - Ky Children's Hospital
  - Gill Heart Institute
  - Markey Cancer Center
  - Kentucky Clinic
- 2 Chandler Hospital Parking Garage
- 3 UK HealthCare at Turfland
- 4 UK Good Samaritan Hospital
- 5 UK Polk-Dalton Clinic
- 6 UK Outpatient Psychiatry Clinic

## UK HEALTHCARE IS TOBACCO FREE

Smoking and all other forms of tobacco use are prohibited anywhere on the grounds, including parking garages and outdoor areas. Information on options for patients or visitors who use tobacco is available from Customer Service information desks, near the shuttle drop-off points, or by calling 1-800-333-8874.