

FECN16 CWIS 021800

THIRTY DAY ICE OUTLOOK FOR THE EASTERN AND NORTHERN ARCTIC FOR DECEMBER ISSUED BY ENVIRONMENT CANADA ON 02 DECEMBER 2024. THIS IS THE LAST FORECAST BULLETIN FOR THE SEASON.

Summary for November 15 to 29.

Average air temperatures have been significantly above normal for all regions. Freeze-up is around 2 weeks slower than normal in Baffin Bay.

Weather forecast for December.

Air temperatures are forecast to be above normal except near normal over eastern Baffin Bay.

Southwestern Baffin Bay.

December 1-7

- 9-9+ tenths grey-white and first-year ice including a trace of multi-year ice along the coast in the extreme northwestern section.
- 9-9+ tenths new and grey ice in the eastern section.
- Elsewhere, 9-9+ tenths grey and grey-white ice.
- Consolidated grey-white ice along parts of the Baffin Island coast.

December 8-15

- 9-9+ tenths grey-white and first-year ice including a trace of multi-year ice in the northwestern section.
- 9-9+ tenths grey-white ice in the southwestern and central sections.
- 9-9+ tenths new and grey ice in the extreme eastern section.
- Consolidated first-year ice including a trace of multi-year ice along parts of the Baffin Island coast.

December 16-25

- 9-9+ tenths first-year ice including a trace of multi-year ice along the coast in the western section.
- 9-9+ tenths grey-white and first-year ice in the central section.
- 9-9+ tenths grey and grey-white ice in the extreme eastern section.
- Consolidated first-year ice including a trace of multi-year ice along parts of the Baffin Island coast.

December 26-31

- 9-9+ tenths first-year ice including a trace of old ice along the coast in the western section.
- 9-9+ tenths first-year ice in the central section.
- 9-9+ tenths grey-white and first-year ice in the extreme eastern section.
- Consolidated first-year ice including a trace of multi-year ice along parts of the Baffin Island coast.

Northern Baffin Bay

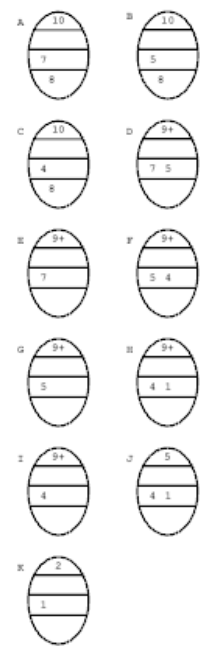
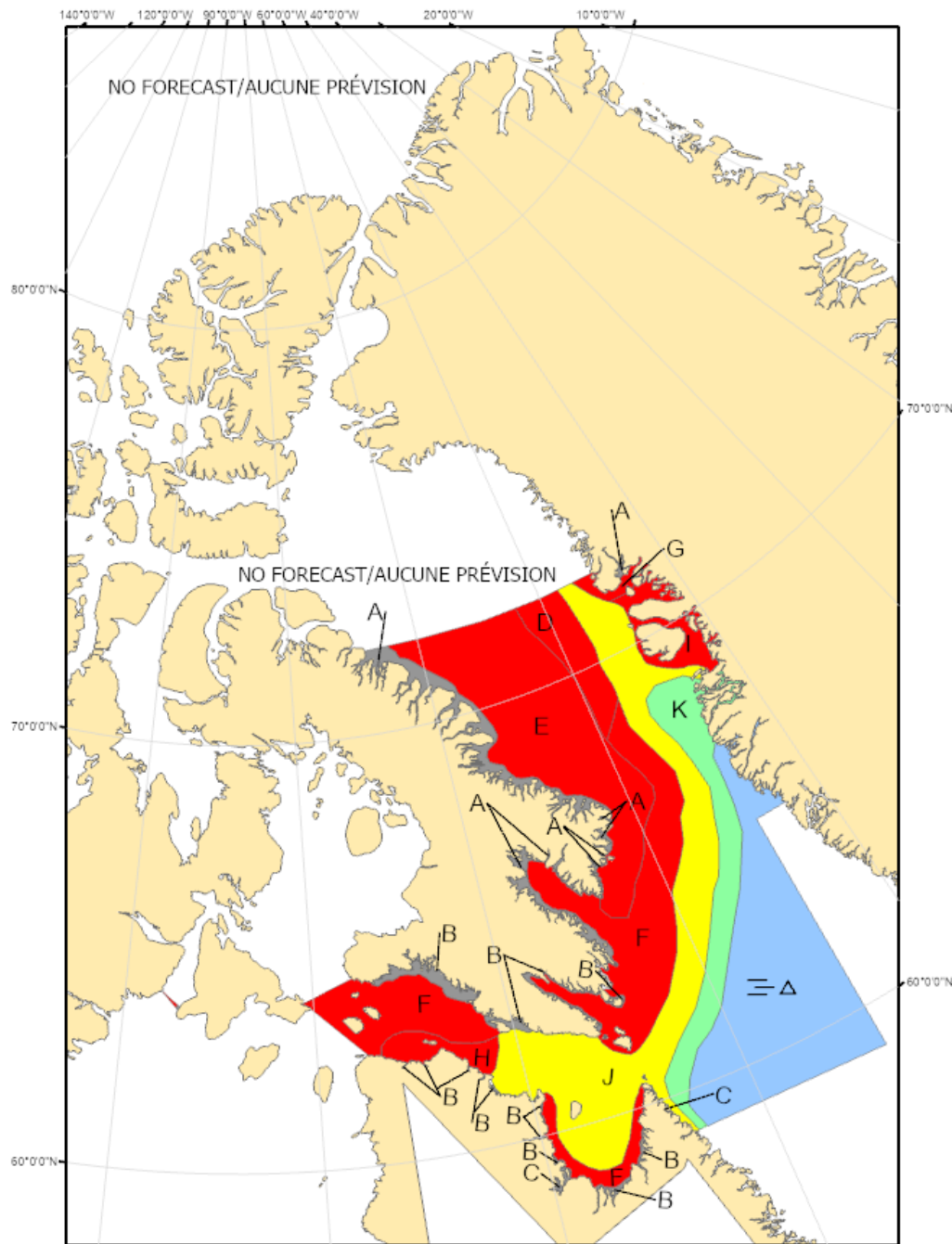
Pond and Navy Board Inlets

Admiralty Inlet

Lancaster Sound

Barrow Strait
Prince Regent Inlet
Gulf of Boothia
Wellington Channel
McDougall Sound
Jones Sound
Norwegian Bay
Eureka Sound
Western Kane Basin

Forecasts have ended for the season.



COLOR CODES BASED ON TOTAL CONCENTRATION

	ICE FREE		4-6 TENTHS		FAST ICE (TEN TENTHS)
	LESS THEN 1 TENTH		7-8 TENTHS		ICE SHELF
	1-3 TENTHS		9-10 TENTHS		UNDEFINED ICE

North American Ice Service /
 Service des glaces de l'Amérique du Nord
ICE FORECAST - 30 DAY
PRÉVISIONS DES GLACES - 30 JOURS
VALID/VALIDE: 31 DEC/DÉC. 2024