

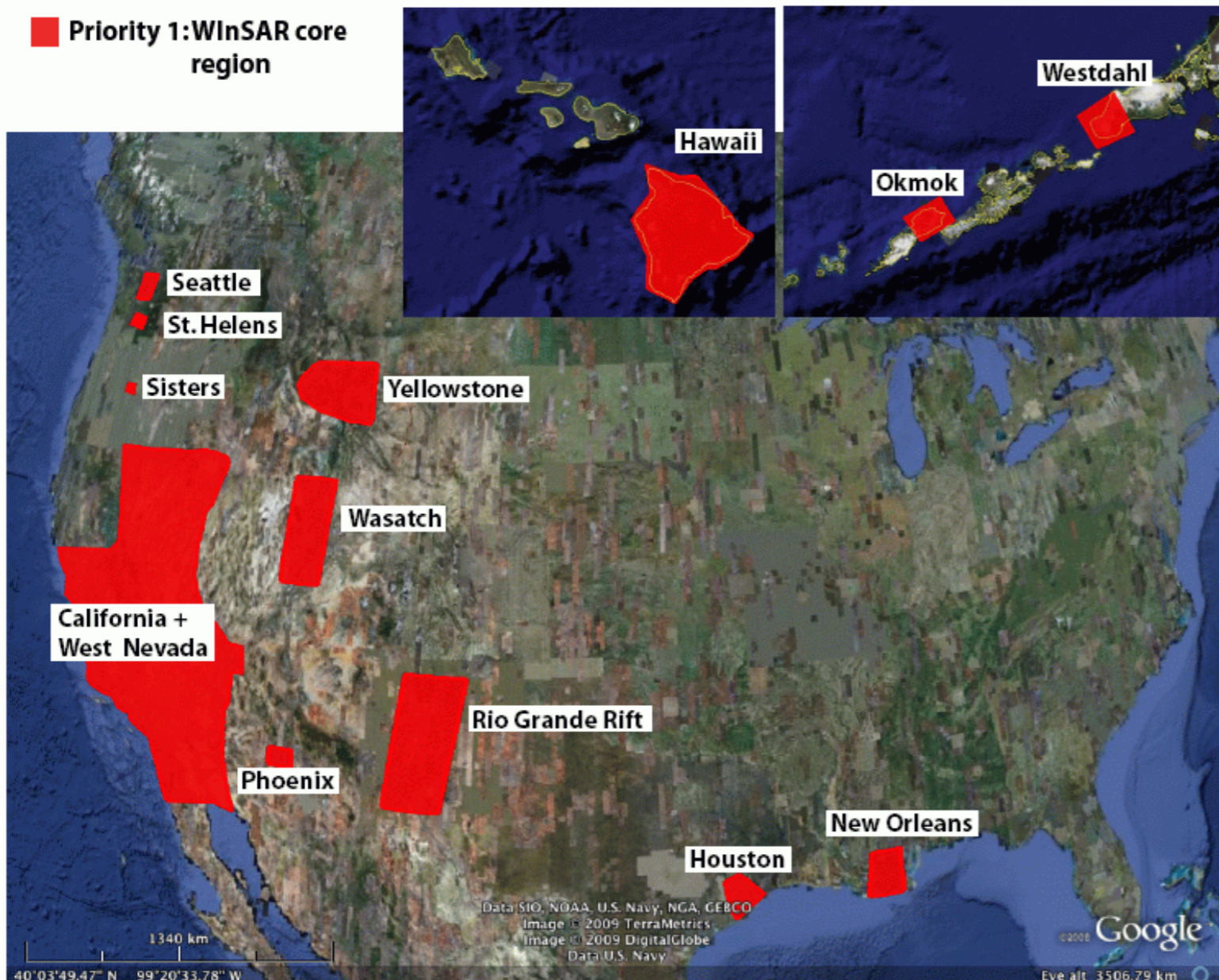
# **2009 WinSAR luncheon**

- 1. Falk Amelung, State of WinSAR and Supersites**
- 2. (?) Torild van Eck, European Plate Boundary Observatory (EPOS)**
- 3. Fran Boler, Current status of WinSAR and GEOES archives**
- 4. Vicky Wolf, Update from the ASF**
- 5. David Sandwell, Earthscope and WinSAR**
- 6. Paul Rosen: The status of ROI\_PAC**
- 7. Scott Baker: getSAR**

2008 Strategic plan:

# SAR data subscriptions

Envisat, ERS, **ALL** data,  
homogeneous catalogue



Envisat tasking:

2005-9/2008: GEOES

10/2008-4/2009: nothing

4/2009-9/2010: WinSAR

Conflicts with JPL/NASA  
ocean monitoring

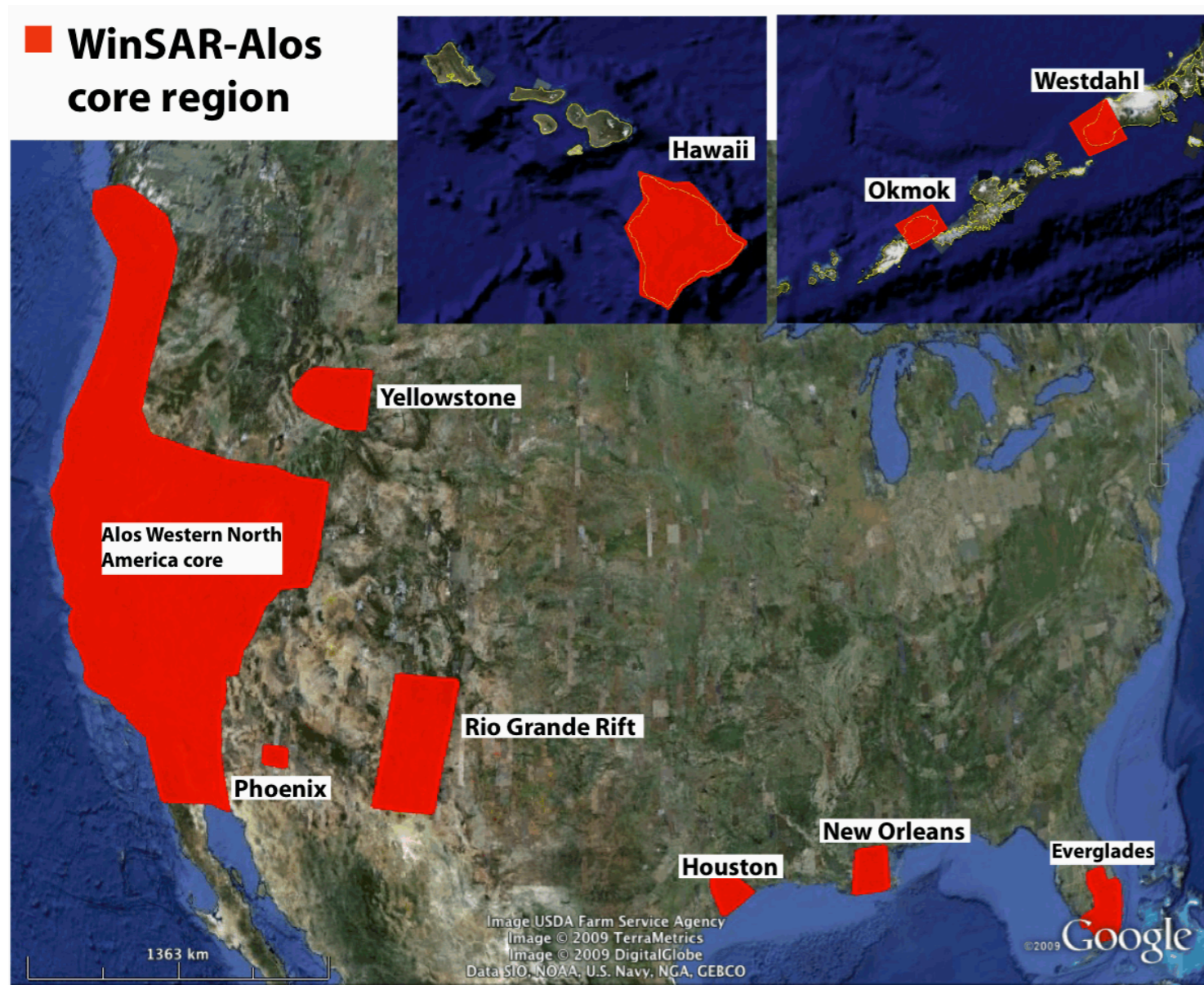
ERS-2 background plan

pending NSF proposal



# SAR data subscriptions

## ALOS (ASF)



NASA U-pass proposal accepted !

# Next Steps:

- **Envisat new Orbit starting 10/2010**

30 day repeat, inclination drift

InSAR possible at Equator, US: 6 month temporal baseline ?

\$200k/yr (tasking \$75k/yr, imagery \$75k/yr, Unavco \$50k/yr)

(not budgeted for in WinSAR proposal)

- **ERS-2 until 2011**

- **Sentinel starting in 2012**

12 day repeat, largely fixed observation plan

free, open data access

maybe data for Earthscope region

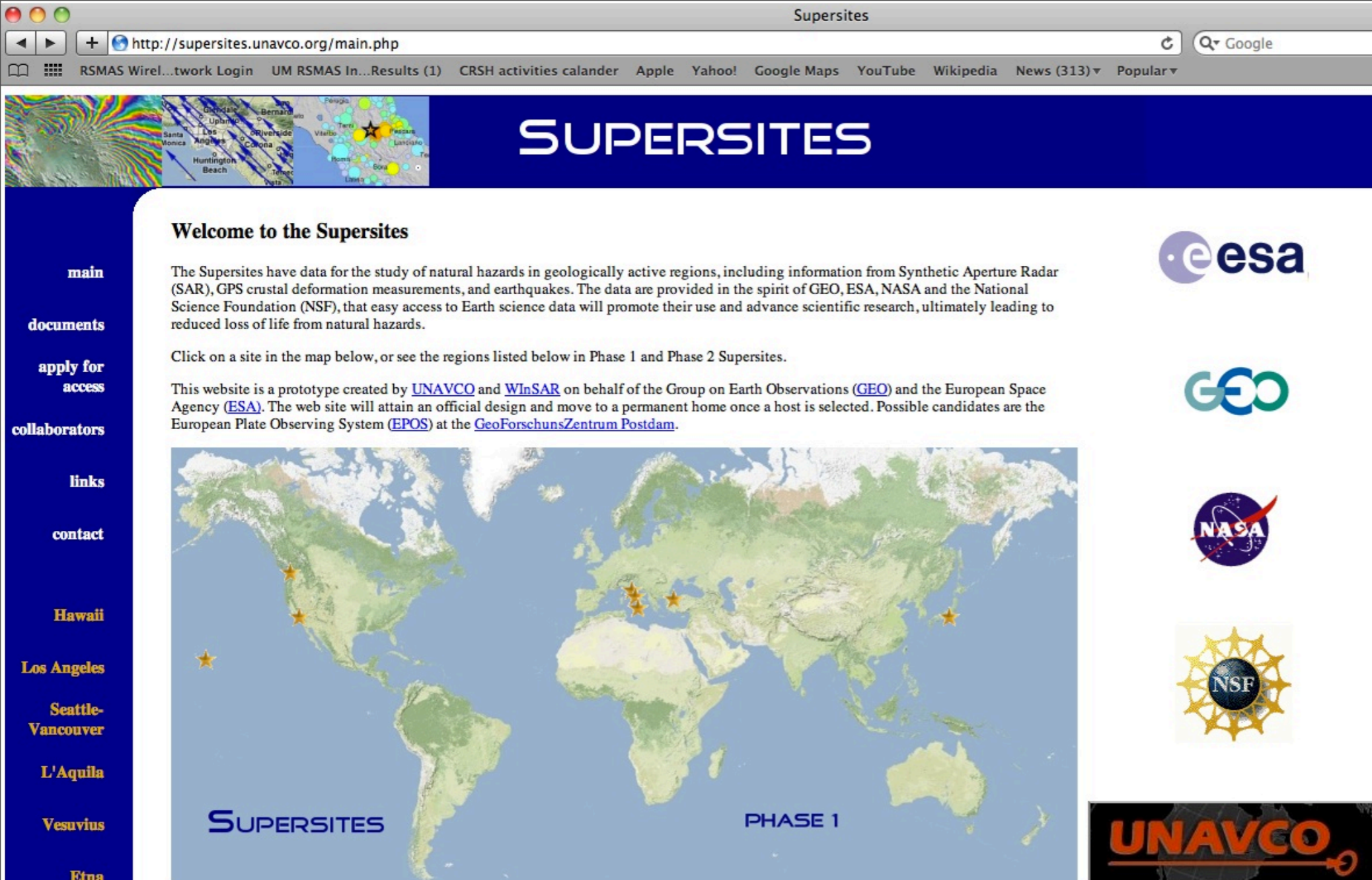
operational satellite, not R&D (GMES)

operated initially by ESA, then by different agency

brochure (and powerpoint) with achievements, recommendations

(splinter at Unavco Science meeting March 9-11 2010?)





current status:

3 volcano Supersite candidates: Hawaii, Etna, Vesuvius/Campi Phlegreii

4 earthquake Supersite candidates: LA, Tokyo, Vancouver, Istanbul

need Hawaii, Etna ground-based data

DLR (TerraSAR-X), JAXA (ALOS) principally agree

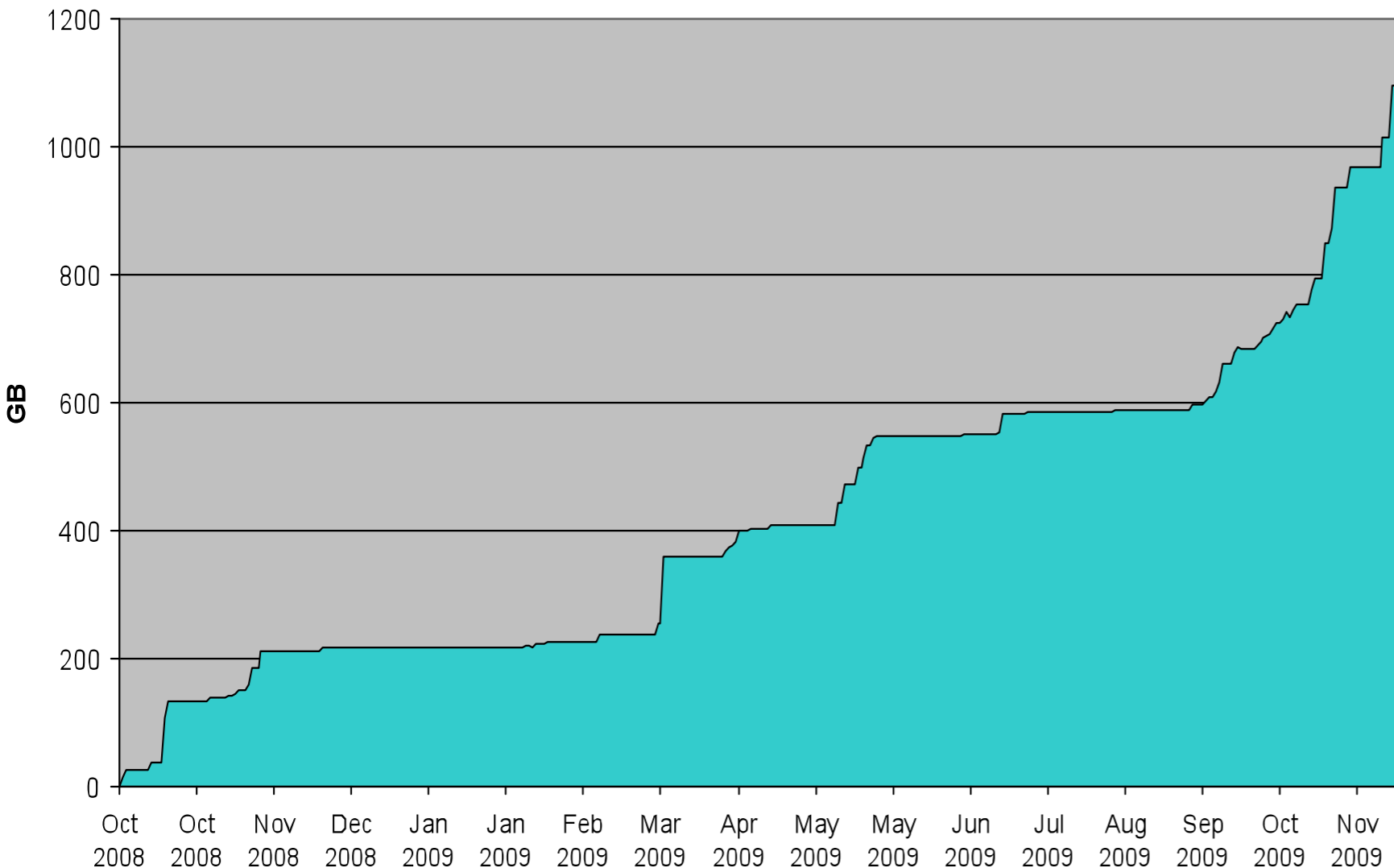
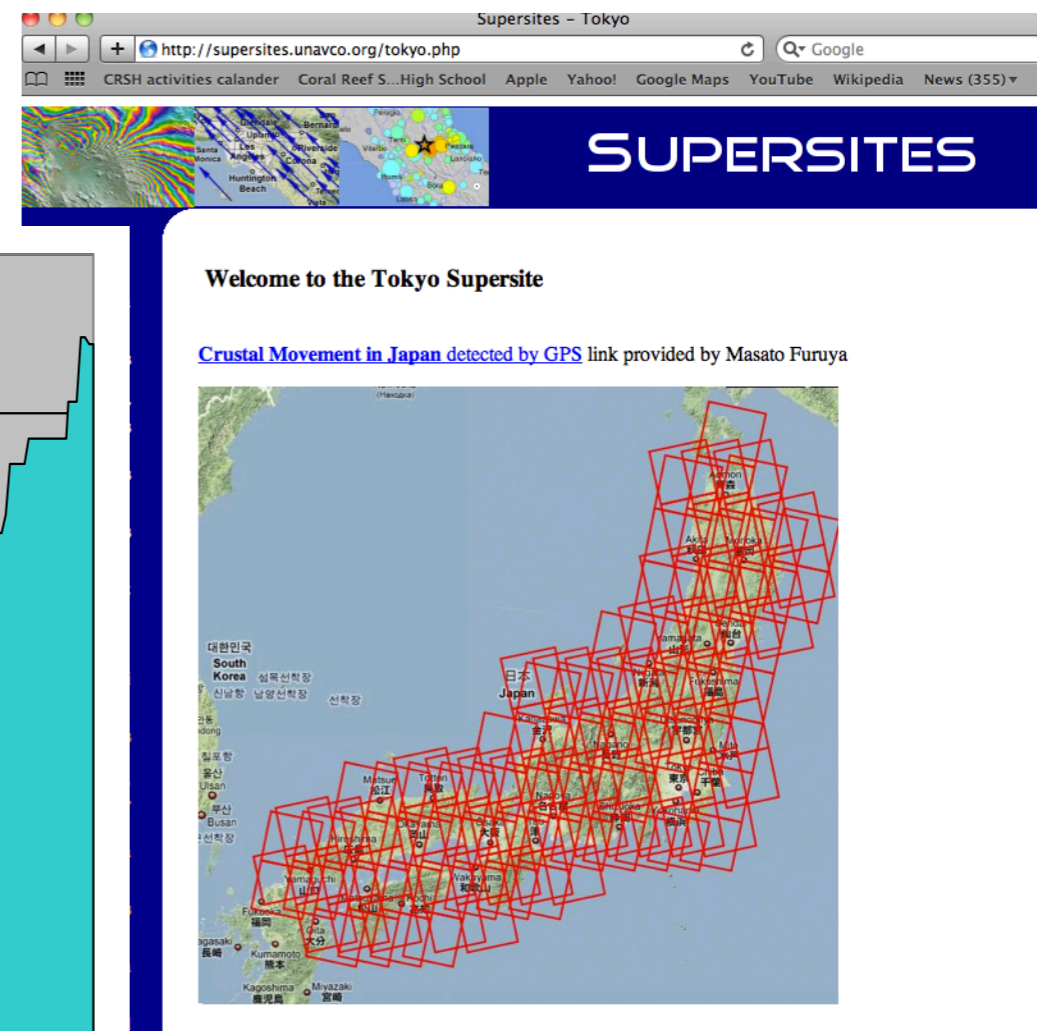
**Voluntary effort, no funding for Unavco**







# Growth of ESA's virtual archive



Thanks to Suzanna Gross (UNAVCO) the archive is growing quickly:

- ➔ 7000 ERS / Envisat SAR scenes are currently in the archive production
- ➔ other Supersites are also continuously growing, with currently 3000 scenes in production

# I. Supersite candidates

Unavco's tasks: -data ordering (updating subscriptions)  
-complete homogeneous data sets  
-website, GPS data archiving

principle: "peer pressure"

# 2. Natural laboratories (ground-based data, ESA SAR)

in discussion: Iceland, Greece, East Africa, Turkey...

principle: "if you contribute ground-based data you get the ESA SAR data"

## Next steps:

- White paper
- GEO Geohazard Community of Practice, Paris, Jan 18-21
- By-laws (governance structure, scientific and operational committee)
- Bergen "Living Planet" meeting, June 28- July 2 2010"