



# MOLT SEARCH ID GUIDE

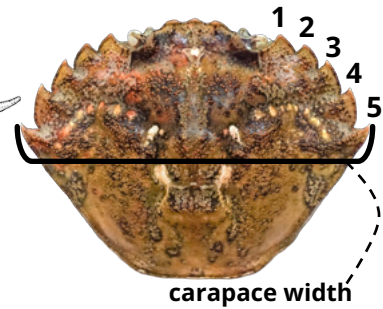
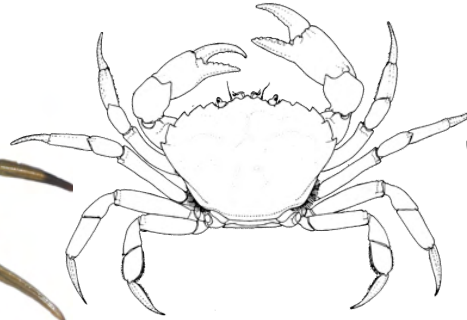


Available at: [wsg.washington.edu/moltsearch](http://wsg.washington.edu/moltsearch)

## EUROPEAN GREEN CRAB *Carcinus maenas*



- **Carapace:** oval to 90mm; 5 prominent marginal teeth, 3 rostral bumps
- **Claws:** not rounded, occasionally with blue tips
- **Walking legs:** last pair slightly flattened



carapace width

## NATIVE CRABS

While not all inclusive, this guide includes the species you may be most likely to encounter as molts

### NATIVE SHORE CRABS

*Hemigrapsus oregonensis*, *Hemigrapsus nudus*

- **Carapace:** square to 60mm; 3 marginal teeth, 2 rostral bumps
- **Claws:** rounded, often w/ fleshy tufts, *H. nudus* with polka dots
- **Walking legs:** *H. oregonensis* with fine sparse hairs



### HAIRY HELMET CRAB

*Telmessus cheiragonus*

- **Carapace:** diamond to 100mm; 6 prominent marginal teeth widest at the 5<sup>th</sup>; hairy
- **Claws:** small, similar to walking legs; hairy
- **Walking legs:** long and hairy



### SPIDER CRABS

Multiple species of the family Majidae: (e.g., *Pugettia producta*, *P. gracilis*, *Scyra acutifrons*)

- **Carapace:** longer front-back than wide with rostrum protruding far beyond eyes
- **Claws:** long and thin
- **Walking legs:** long with sharp tips



### PEA CRAB

Multiple species of the family Pinnotheridae

- **Carapace:** to 11mm; oblong oval; smooth with no marginal teeth; no rostrum
- **Claws:** small and indistinct



### BLACK-CLAWED CRAB

*Lophopanopeus bellus*

- **Carapace:** to 40mm; pentagonal with 3 indistinct marginal teeth
- **Claws:** Large, black-tipped claws
- **Walking legs:** Hairs on walking legs



© Greg Jensen

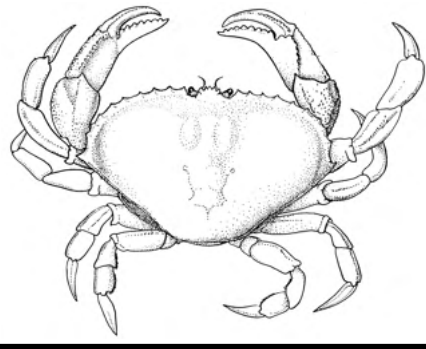


# MOLT SEARCH ID GUIDE

## DUNGENESS CRAB

*Cancer (Metacarcinus) magister*

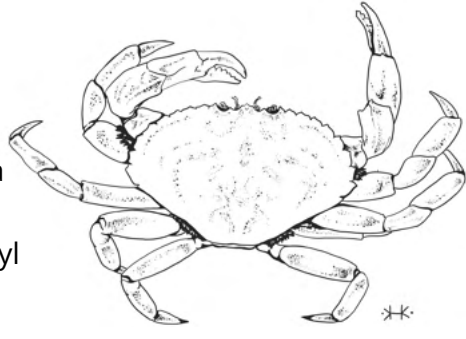
- **Carapace:** oval to 230mm; 10 marginal teeth and widest at pronounced 10th tooth
- **Claws:** serrations on upper edge of dactyl
- **Walking legs:** long light-colored with hairs



## GRACEFUL CRAB

*Cancer (Metacarcinus) gracilis*

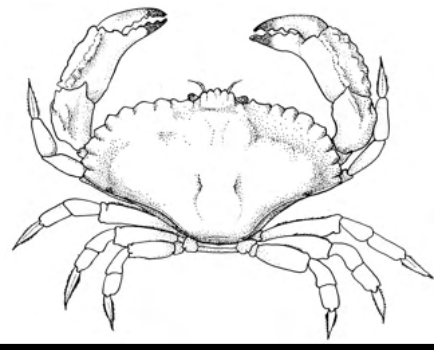
- **Carapace:** as MEMA but to 115mm and widest at 9th tooth. 10th tooth appears as a notch behind widest point.
- **Claws:** no serrations on upper edge of dactyl
- **Walking legs:** long purplish hairless



## RED ROCK CRAB

*Cancer productus*

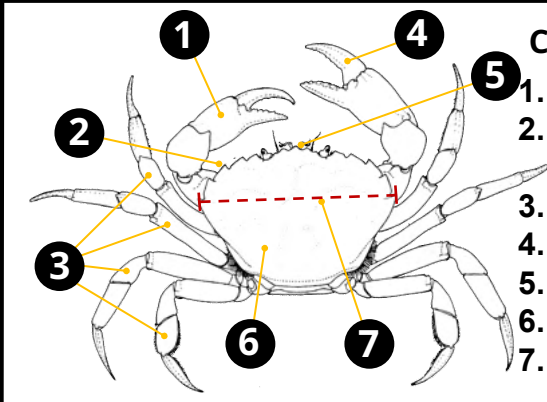
- **Carapace:** fan to 200mm; 10 rounded, blunt marginal teeth, 5 bumps on protruding rostrum
- **Claws:** large, muscular, with black tips
- **Walking legs:** small and thin



## PYGMY ROCK CRAB

*Cancer (Glebocarcinus) oregonensis*

- **Carapace:** circular to 53mm; 10 distinct but petite marginal teeth, widest at 7th or 8th
- **Claws:** very large and rounded with black tips
- **Walking legs:** hairy



### Crab Anatomy

1. Claw/Cheliped
2. Marginal teeth/lateral spines
3. Walking legs
4. Dactyl
5. Rostrum
6. Carapace
7. Carapace width

## CRABDOMEN GUIDE

♀ Female      ♂ Male

Individual abdomens can vary in shape and color, but this guide covers the typical shape associated with each sex.

### EUROPEAN GREEN CRAB

*Carcinus maenas*

### DUNGENESS CRAB

*Cancer (Metacarcinus) magister*

