



MOLT SEARCH ID GUIDE

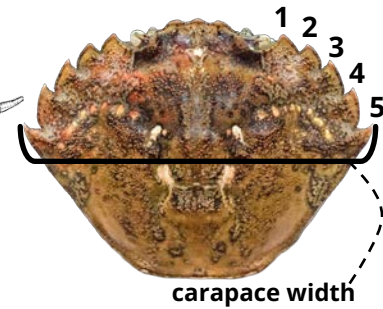
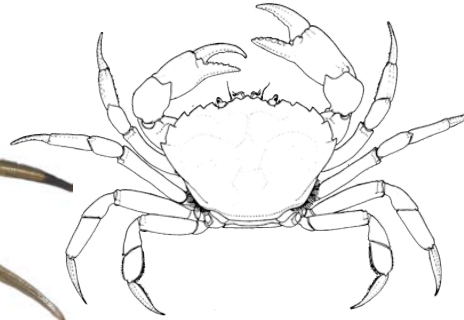


Available at: wsg.washington.edu/moltsearch

EUROPEAN GREEN CRAB *Carcinus maenas*



- **Carapace:** oval to 90mm; 5 prominent marginal teeth, 3 rostral bumps
- **Claws:** not rounded, occasionally with blue tips
- **Walking legs:** last pair slightly flattened



carapace width

NATIVE CRABS

While not all inclusive, this guide includes the species you may be most likely to encounter as molts

NATIVE SHORE CRABS

Hemigrapsus oregonensis, *Hemigrapsus nudus*

- **Carapace:** square to 60mm; 3 marginal teeth, 2 rostral bumps
- **Claws:** rounded, often w/ fleshy tufts, *H. nudus* with polka dots
- **Walking legs:** *H. oregonensis* with fine sparse hairs



HAIRY HELMET CRAB

Telmessus cheiragonus

- **Carapace:** diamond to 100mm; 6 prominent marginal teeth widest at the 5th; hairy
- **Claws:** small, similar to walking legs; hairy
- **Walking legs:** long and hairy



SPIDER CRABS

Multiple species of the family Majidae: (e.g., *Pugettia producta*, *P. gracilis*, *Scyra acutifrons*)

- **Carapace:** longer front-back than wide; rostrum protrudes far beyond eyes
- **Claws:** long and thin
- **Walking legs:** long with sharp tips



PEA CRAB

Multiple species of the family Pinnotheridae

- **Carapace:** to 11mm; oblong oval; smooth with no marginal teeth; no rostrum
- **Claws:** small and indistinct



BLACK-CLAWED CRAB

Lophopanopeus bellus

- **Carapace:** to 40mm; pentagonal with 3 indistinct marginal teeth
- **Claws:** Large, black-tipped claws
- **Walking legs:** Hairs on walking legs



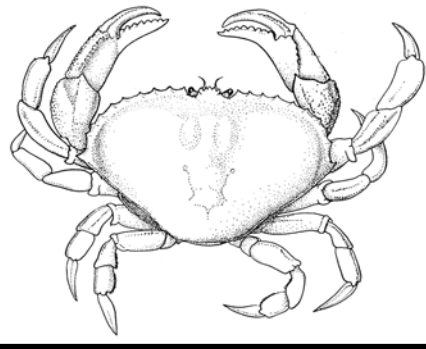
© Greg Jensen

MOLT SEARCH ID GUIDE

DUNGENESS CRAB

Cancer (Metacarcinus) magister

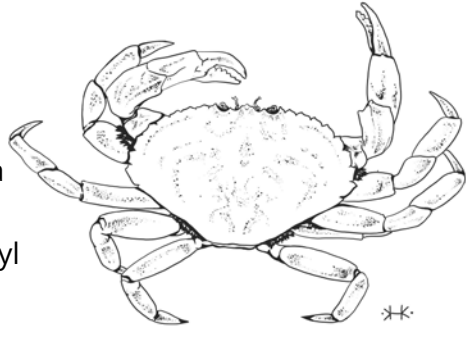
- **Carapace:** oval to 230mm; 10 marginal teeth and widest at pronounced 10th tooth
- **Claws:** serrations on upper edge of dactyl
- **Walking legs:** long light-colored with hairs



GRACEFUL CRAB

Cancer (Metacarcinus) gracilis

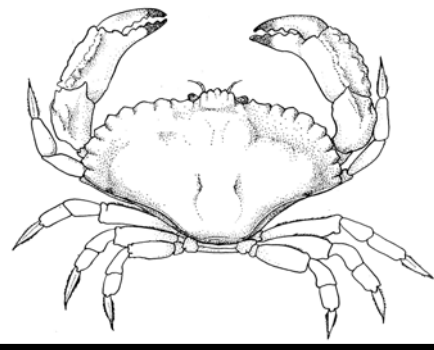
- **Carapace:** as MEMA but to 115mm and widest at 9th tooth. 10th tooth appears as a notch behind widest point.
- **Claws:** no serrations on upper edge of dactyl
- **Walking legs:** long purplish hairless



RED ROCK CRAB

Cancer productus

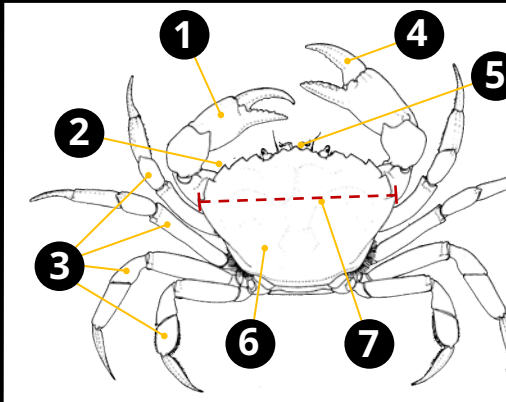
- **Carapace:** fan to 200mm; 10 rounded, blunt marginal teeth, 5 bumps on protruding rostrum
- **Claws:** large, muscular, with black tips
- **Walking legs:** small and thin



PYGMY ROCK CRAB

Cancer (Glebocarcinus) oregonensis

- **Carapace:** circular to 53mm; 10 distinct but petite marginal teeth, widest at 7th or 8th
- **Claws:** very large and rounded with black tips
- **Walking legs:** hairy



Crab Anatomy

1. Claw/Cheliped
2. Marginal teeth/lateral spines
3. Walking legs
4. Dactyl
5. Rostrum
6. Carapace
7. Carapace width

CRABDOMEN GUIDE

♀ Female ♂ Male

Individual abdomens can vary in shape and color, but this guide covers the typical shape associated with each sex.

EUROPEAN GREEN CRAB

Carcinus maenas

DUNGENESS CRAB

Cancer (Metacarcinus) magister

