

NATIONAL WEEKLY FEEDER & STOCKER CATTLE SUMMARY

USDA LIVESTOCK, POULTRY & GRAIN MARKET NEWS

St. Joseph, Missouri

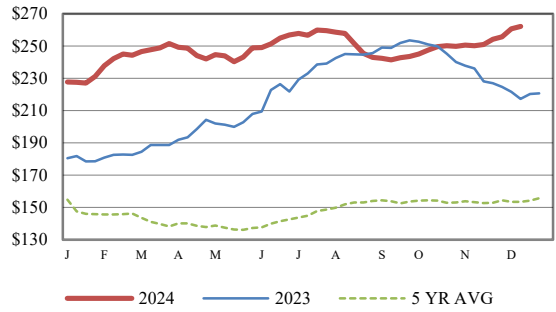
Monday, December 16, 2024

for w/e Saturday, 12/14/24. Email: stjoe.lpgmn@usda.gov

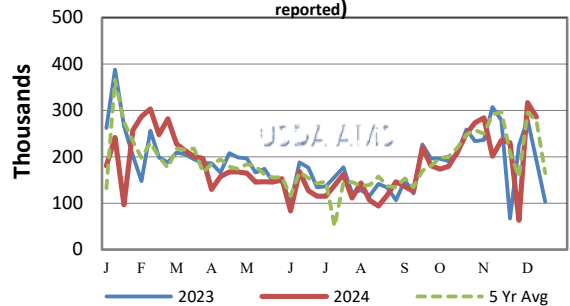
| Receipts: | This Week | Last Week | Year Ago |
|--------------------------|-----------|-----------|----------|
| SJ LS850 | 319,800 | 389,400 | 274,500 |

Compared to last week, steers and heifers sold uneven; 2.00 lower to 2.00 higher. After last week's sharp increase in grazing calf values, aggressiveness of buyers was tempered somewhat this week. Cattle feeders and backgrounders are very bullish currently as the cash market is outperforming the futures, there is great hope that the cash market will continue at these levels. Very few sales remain before the end of the year and buyers want to make sure they get the cattle bought that they need. Commercial bred cows hitting new records at area auctions. Several long-time ranchers are having complete or partial dispersals. Some may be retiring; others could be thinking it's very dry and it's time to sell when the price is really good or both scenarios. The WASDE (Supply and Demand) report came out on Tuesday with new-crop U.S. ending stocks estimates reported as bullish for corn, neutral to slightly bearish on soybeans, and slightly bullish for wheat. Increase in feedstuffs could certainly play a factor getting through the winter and into next year on the bottom line of ranchers that are cutting it close on breakevens. The forecast for 2025 cattle prices were raised on tighter than expected cattle and beef supplies. Cash fed cattle market rose up to 196.00, the CME Live Cattle futures couldn't keep pace as it ended the week 3.00 under the cash. Negotiated sales of slaughter steers and heifers in the Southern Plains steady to 1.00 higher at 191.00 to 192.00. In Nebraska, live sales were 3.00 to 5.00 higher at 195.00 with a few up to 196.00, while the dressed sales sold 3.00 to 8.00 higher at 300.00 to 305.00. Choice boxed beef closed the week 4.35 higher at 316.39 while Select was 7.13 higher at 283.86 for the same period. Weekly Cattle Slaughter under federal inspection estimated at 609K, 5K less than last week and 38K less than a year ago. Auction volume this week included 44 percent weighing over 600 lbs and 40 percent heifers. [More.....](#)

CME FEEDER CATTLE INDEX (\$/CWT)



NATIONWIDE REPORTED WEEKLY FEEDER CATTLE AUCTION RECEIPTS
(Receipts vary depending on the number of auctions reported)



REGIONAL WEIGHTED AVERAGE FEEDER STEER PRICES

NORTH CENTRAL REGION

| Steers: | This Week | Last Week | Last Year |
|-------------|-----------|-----------|-----------|
| 600-700 lbs | \$305.86 | \$303.64 | \$254.27 |
| 700-800 lbs | \$280.30 | \$277.28 | \$232.32 |
| 800-900 lbs | \$260.82 | \$259.21 | \$219.88 |

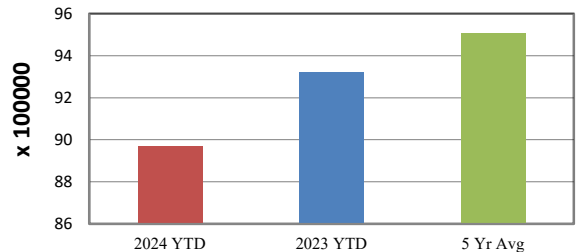
SOUTH CENTRAL REGION

| Steers: | This Week | Last Week | Last Year |
|-------------|-----------|-----------|-----------|
| 500-600 lbs | \$318.12 | \$320.18 | \$261.85 |
| 600-700 lbs | \$282.12 | \$284.27 | \$235.26 |
| 700-800 lbs | \$260.93 | \$263.51 | \$217.54 |

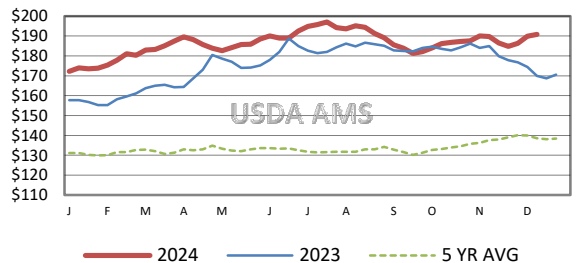
SOUTHEAST REGION

| Steers: | This Week | Last Week | Last Year |
|-------------|-----------|-----------|-----------|
| 400-500 lbs | \$332.02 | \$325.81 | \$261.71 |
| 500-600 lbs | \$299.45 | \$295.98 | \$237.03 |
| 600-700 lbs | \$269.96 | \$265.15 | \$216.68 |

YEAR TO DATE AUCTION RECEIPTS



5 AREA WEEKLY WEIGHTED AVERAGE SLTR STEER PRICE (\$/CWT)



USDA Livestock, Poultry, & Grain Market News

St. Joseph, Missouri

Phone: 816-676-7000



For detailed state-by-state feeder cattle quotes:

[National Feeder & Stocker Cattle Summary](#)

<http://www.ams.usda.gov/LSMarketNews>