

Receipts: This Week: 9,141 Week Ago: 11,308 Year Ago: 6,803

Compared to last week, steers under 800 lbs sold steady to 2.00 higher, while steers over 800 lbs sold steady to 3.00 lower. Heifers sold mostly 2.00 to 6.00 higher. Demand was good as this is the last auction feeder cattle marketing week of the year in Kansas. Compared to last week, slaughter cows and bulls sold steady to 3.00 higher. In the feedlot trade, live sales sold steady at 191.00. In the hay market this past week, demand remained light, and prices were mostly steady. The supply of hay available remains heavy as almost all contributors indicated that there is lots of hay sitting around. Those producers wanting to sell their hay are discouraged by the lower prices and many have chosen to hold onto their hay until prices rise. Cattle are still grazing on wheat and rye in some areas and the warm and dry weather all contribute to less hay being fed. All of us here at USDA-KDA Market New Service wish each and every one of you a safe and joyous holiday season.

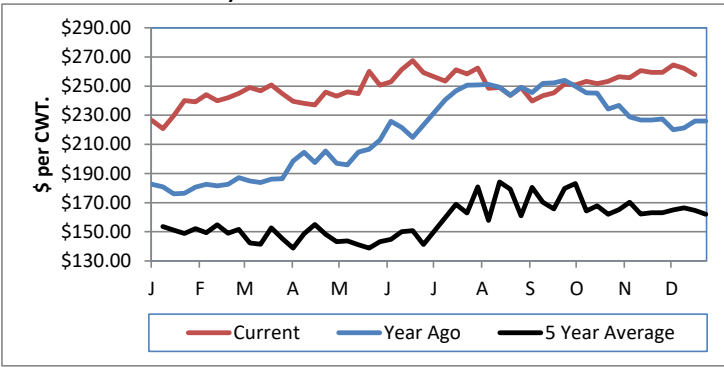
KANSAS WEEKLY FEEDER CATTLE AVERAGES

[Cattle Auction Summary](#)

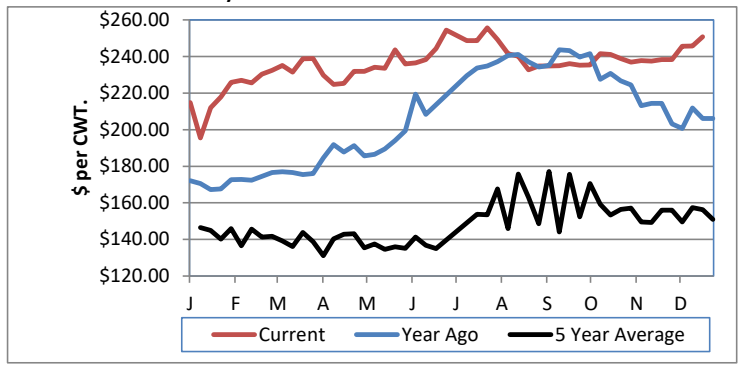
Feeder Steers:	This Week	Last Week	Year Ago
M&L 1			
400-500 lbs.	\$381.80	\$379.00	\$324.61
500-600 lbs.	\$329.05	\$328.94	\$299.09
600-700 lbs.	\$295.43	\$293.17	\$256.28
700-800 lbs.	\$271.39	\$269.22	\$235.26
800-900 lbs.	\$251.62	\$255.37	\$220.17
900-1000 lbs.	\$246.22	\$247.09	\$208.28

Feeder Heifers	This Week	Last Week	Year Ago
M&L 1			
400-500 lbs.	\$317.01	\$324.11	\$281.62
500-600 lbs.	\$289.32	\$283.00	\$258.31
600-700 lbs.	\$267.10	\$261.08	\$234.02
700-800 lbs.	\$250.77	\$245.75	\$206.10
800-900 lbs.	\$231.89	\$229.86	\$197.74
900-1000 lbs.	\$215.17	\$220.11	\$178.59

Weekly M&L 1 700-900 lb. Feeder Steer Price



Weekly M&L 1 700-800 lb. Feeder Heifer Price



KANSAS DIRECT FEEDER CATTLE

[Fdr Cattle Direct Summary](#)

Medium and Large 1 (Current FOB)

	Steers	Heifers
600-700 lbs.	NQ	NQ
700-800 lbs.	NQ	240.00
800-900 lbs.	NQ	225.75

KANSAS WEEKLY GRAIN BIDS

[Kansas Grain Bids](#)

	Terminal Elevators	Country Elevators
US NO 1 HR Winter Wheat	4.8325-5.4175	4.5325-5.0875
US NO 2 Yellow Corn	3.9725-4.3625	4.1725-4.8500
US NO 2 Sorghum	3.7700-4.1850	3.6725-4.2000
US NO 2 Soybeans	8.7175-9.8075	8.4175-9.1075
Sunflower - Oilseeds (country elevators)		NQ
Cotton - West Texas		63.06

KANSAS WEEKLY SLAUGHTER CATTLE

[Cattle Auction Summary](#)

Slaughter Cows

	Dressing	Average	High	Low
Prem White	NQ	NQ	NQ	NQ
Breakers		122.73	131.53	111.93
Boners		118.29	NQ	100.49
Lean		104.52	NQ	100.09

Slaughter Bulls

	Average	High	Low
YG 1-2	142.82	154.05	130.71

KANSAS WEEKLY ETHANOL BIDS

[Ethanol Summary](#)

DDG	170.00-190.00
Modified Wet	NQ
Wet	55.00-70.00

KANSAS WEEKLY HAY PRICES

[Kansas Hay](#)

	Southwest KS	South Central KS
Alfalfa (Dairy)		
Supreme	NQ	265.00
Premium	NQ	200.00
Ground & Delivered	130.00-160.00	130.00-155.00

KANSAS WEEKLY WTD AVG SLAUGHTER CATTLE REPORT

[KS WEEKLY SLAUGHTER CATTLE](#)

	This Week	Last Week	Last Year
Live Str	\$191.09	\$191.16	\$170.77
Live Hfr	\$191.20	\$191.71	\$170.39
Dressed Str	NQ	\$305.00	NQ
Dressed Hfr	\$305.00	NQ	NQ

USDA Livestock Poultry and Grain Market News

St Joseph, MO

Phone: (816) 676-7000

Email: stjoe.lpgmn@usda.gov

<http://www.ams.usda.gov/lpsmarketnewspage>