

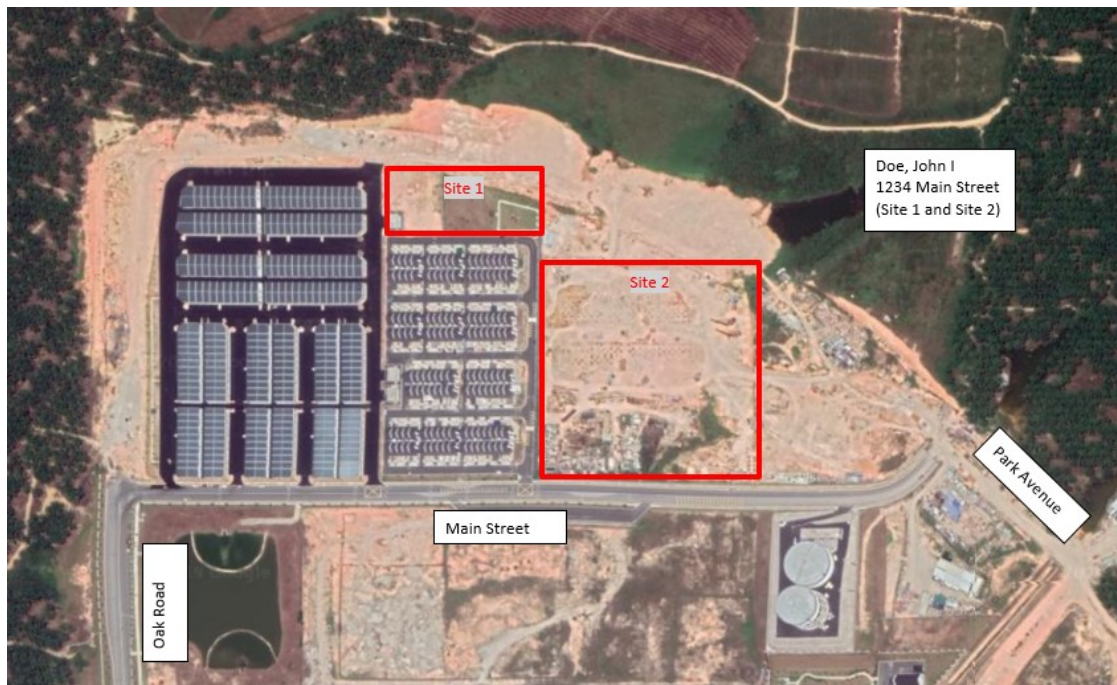
## Industrial Hemp Registration Frequently Asked Questions: CULTIVATION SITE

### **Q. What is a cultivation site?**

A: Section 4890(a)(7) in Title 3 of California Code of Regulations defines cultivation site as a contiguous land area on which the applicant plans to engage in industrial hemp cultivation, storage, or both. If a registrant has more than one cultivation site, the information on each cultivation site must be provided on the supplemental form of the industrial hemp registration application.

### **Q. When must a boundary map be provided?**

A: Boundary maps must be included along with the industrial hemp registration application for each cultivation site to be registered. Any changes (adding, removing, or editing) of the registered cultivation site(s) would require new boundary map(s).



### **Q: What information should I provide on the boundary map for the cultivation site?**

A: The boundary map outlining each cultivation site must include the applicant name, physical address of each site (if available), labels for all roadways, labels for each cultivation site (Site 1, Site 2, etc.) that correspond to the application, and an outline of each cultivation site.

### **Q: What online applications can be used to develop the boundary map?**

A: Boundary maps may be developed using free online applications like [Google Earth](#), [Google Maps](#), MapQuest, [National Map](#), and [Waze](#).

### **Q: How do I know whether my cultivation site has been approved?**

A: The county agricultural commissioner will notify you in writing once your cultivation site(s) has been reviewed and approved.

### **Q: How do I make any change on cultivation site?**

A: Changes to cultivation sites must be approved by the county agricultural commissioner prior to planting. Any changes (adding, removing, or editing) of registered cultivation site(s) must be submitted through the [Industrial Hemp Application to Amend Registered Site/Cultivar/Plan](#).

For more information on the program, visit [CDFA's Industrial Hemp Program webpage](#). If you have any questions, contact Industrial Hemp Program at (916) 654-0435 or [industrialhemp@cdfa.ca.gov](mailto:industrialhemp@cdfa.ca.gov).