

COAHOMA JUNIOR COLLEGE BULLETIN

Clarksdale, Mississippi



CATALOG 1971-72

No person shall be denied admission to Coahoma Junior College nor be excluded from participation in, be denied the benefits of, or be subjected to discrimination under any of the College's programs or activities on the grounds of race, color, or national Origin.

Volume X

Number 3

BULLETIN
of
COAHOMA JUNIOR COLLEGE

and
AGRICULTURAL
HIGH SCHOOL

Clarksdale, Mississippi

Catalog Edition

1971-72

Number 2

Year 1917

BULLETIN

of

COAHOMA JUNIOR COLLEGE

and

AGRICULTURAL

HIGH SCHOOL

Charleston, Mississippi

Catalog Edition

1917-18

TABLE OF CONTENTS

ADMINISTRATIVE AND FACULTY STAFF.....	ii
CALENDAR.....	1
GENERAL INFORMATION.....	2
Historical sketch; Location; Philosophy; Terminal Functions; Divisions of the School; Accreditation; Alumni Association; Follow-up and Placement; The Library; Public Relations; Awards and Prizes; Honors' Day; Community Service; Fees and Expenses; Refund of Fees; Schedule of Payments; Books and Supplies; the National Defense Student Loan Program.	
ACADEMIC REQUIREMENTS AND REGULATIONS.....	8
Admissions; Requirements for Graduations; Registration; Change in Registration; Load of Work; Unit of Credit; Scholarship; Grades and Honor Points; Probation; Attendance; Excused Absences; Withdrawals; Examinations and Tests.	
STUDENT LIFE AND SERVICES.....	12
Orientation; Student Handbook; Regulations Governing Students; Student Health Services; Campus Residence; Religious Life; Social Life; Student Activities and Organizations.	
INFORMATION AND REGULATIONS FOR VETERANS.....	15
PROGRAM OF STUDIES.....	17
Curricula Notices; How Teacher Certification Requirements Are Met; Junior College Curricula; Description of Courses; Vocational-Technical Education; High School Division; High School Program of Studies.	
REGISTER OF FIRST ENROLLEES AND GRADUATES.....	39

ADMINISTRATIVE AND FACULTY STAFFS

BOARD OF SUPERVISORS

- CURTIS E. PRESSLEY, JR.,
Clarksdale, Mississippi
- W. A. HUGHES, Jonestown, Mississippi
- GRAHAM BRAMLETT, Bobo, Mississippi
- JOHN McKEE, Friars Point, Mississippi
- T. L. BRUNT, Moon Lake, Mississippi

BOARD OF TRUSTEES. COAHOMA JUNIOR COLLEGE

- HAROLD SIMMONS, Clarksdale, Mississippi
- ROLAND JONES, JR., Lula, Mississippi
- MARVIN SIGMON, JR., Sherard, Mississippi
- C. J. EDWARDS, Indianola, Mississippi
- HERBERT HARGERT,
Indianola, Mississippi
- CECIL SHARP, Marks, Mississippi
- L. I. MYERS, Cleveland, Mississippi
- GARY McWILLIAMS, JR.,
Farrell, Mississippi
- MALCOLM COMMER, Coahoma, Mississippi
- PAUL M. HUNTER,
Superintendent of Education
Coahoma County, Mississippi
Executive Secretary of the Board

ADMINISTRATIVE OFFICERS

- JAMES EARL MILLERPresident of College
B.S., Alcorn A. & M. College
M.S., Tennessee A. & I. State University
Post Graduate Study, University of Southern
California
- BENJAMIN FRANKLIN McLAURINAssistant
to President
B.S., Alcorn A. & M. College
M.S., Tuskegee Institute
Post Graduate Study, New York University

- MARY GERALDINE WHITESIDEDean of
the College
A.M., Jackson State College
Study, Hampton Institute, Chicago University
M.A., Columbia University
Completed Course Requirements for D.Ed., Col-
umbia University
- FRANK B. McCUNE, SR.Principal of the
High School
A.B., Jackson State College
M.S., North Carolina College
Post Graduate Study, Tuskegee Institute and
University of Chicago
- EUGENE FOXAssistant Principal of the
High School
B.S., Jackson State College
M.S., Tuskegee Institute
- ZEE ALFIN ANDERSON BARRONDirector
of Student Personnel
A.B., Jackson State College
Further Study, University of Minnesota
M.A., Columbia University
Post Graduate Study, Columbia University
- MARION REIDRegistrar
A.B., Jackson State College
- LEE ROY GORMANFinancial Aids Officer
and Counselor
B.S., Alcorn A. & M. College
M.A., University of Denver
Post Graduate State University of Iowa
Middle Tennessee State U., Univ. of Mississippi
- MIRIAN GREENLibrarian
A.B., Southern University
M.L.S., University of Mississippi
- CHARLES REIDPublic Relations &
Development
A.B., Morehouse College
Further Study, Kansas State College
- SAMUEL BLACKBURNDirector Vocational
Technical Education
B.S., Alcorn A. & M. College
Graduate Study, University of Minnesota

1970-71 FACULTY

JAMES EARL MILLER ..President of the College
 B.S., Alcorn A. & M. College
 M.S., Tennessee A. & I. State University
 Post Graduate Study, University of Southern California

BENJAMIN FRANKLIN McLAURIN ..Assistant to President
 B.S., Alcorn A. & M. College
 M.S., Tuskegee Institute
 Post Graduate Study, New York University

MARY GERALDINE WHITESIDEDean of the College
 A.B., Jackson State College
 Study, Hampton Institute, Chicago University
 M.A., Columbia University
 Completed Course Requirements or D.Ed., Columbia University

EARLINE M. ANDERSONInstructor in High School Social Science
 B.S., Tuskegee Institute

DOROTHY MOORE ARMSTRONG ..Instructor in High School Business Education
 B.S., Alcorn A. & M. College
 Graduate Study, Tennessee A. & I. State University

J. E. BAINEInstructor in Electronics Study, Mississippi State University, Cleveland Institute of Electronics

LESSIE BARNESInstructor in Business Education
 B.S., Alcorn A. & M. College
 Graduate Study, University of Mississippi, Delta State

WALTER BARNES ..Instructor in World History
 B.S., Alcorn A. & M. College
 M.A., Kansas State University

ZEE ALFIN ANDERSON BARRONInstructor in Language Arts
 A.B., Jackson State College
 Further Study, University of Minnesota
 M.A., Columbia University
 Post Graduate Study, Columbia University

ALFRED D. BLAKEInstructor in Auto Mechanics
 B.S., Mississippi Valley State College
 Further Study, Jackson State College
 Bradley University

SAMUEL L. BLACKBURNDirector of Vocational Technical Education
 B.S., Alcorn A. & M. College
 Graduate Study, University of Minnesota

BARBARA D. BOOKERInstructor in High School Science
 B.S., Alcorn A. & M. College
 Further Study, Jackson State College

EARNESTINE BRIDGEFORTHInstructor in High School English and French
 B.S., Mississippi Industrial College
 Further Study, Atlanta University
 Coe College, Delta State

JOHN L. BROWNInstructor in High School Mathematics
 A.A., Coahoma Junior College
 B.S., Jackson State College

PATRICIA B. BROWNInstructor in Business Education
 A.A., Coahoma Junior College
 B.S., Alcorn A. & M. College
 Graduate Study, Delta State

PATRICIA H. BROWNInstructor in High School Science
 B.S., Tougaloo College
 Further Study, Southern University

ALMA COLE BROWNInstructor in Mathematics
 A.A., Coahoma Junior College
 B.S., Southern University
 M.Ed., Southern University
 Further Study, Florida Atlantic University, Eastern Washington State

ROSA BURNETTInstructor in High School English
 B.S., Mississippi Valley State College

LEON BURRELLInstructor in High School Mathematics
 A.A., Coahoma Junior College
 B.S., Jackson State College

TIMOTHY BURRELLDirector of Audio Visual Education
 A.A., Coahoma Junior College
 B.S., Mississippi Valley State College
 Graduate Study, Mississippi State University

HETTIE S. CAINInstructor in Education
 B.S., Alcorn A. & M. College
 M.S., Illinois State University

- JOSEPH CAINInstructor in Vocational
Technology
B.S., Alcorn A. & M. College
M.S., Bradley University
Further Study, Mississippi State University
- CONSUELLA CARTERDirector of Band
A.B., Rust College
M. Mus. Ed., Vandercook College of Music
- FREDDIE CASWELLInstructor in
Drafting & Design
B.A., Tuskegee Institute
Further Study, Florida A. & M. University
- CLEMONTINE CATCHINGSInstructor in
Physical Science
B.S., Tougaloo College
M.A., Tuskegee Institute
- SHIRLEY CATCHINGSInstructor in High
School English
B.S., Jackson State College
Further Study, Knoxville College
- ARNOLD M. CHAMBERSInstructor in High
School Mathematics
A.A., Coahoma Junior College
B.S., Jackson State College
Graduate Study, Delta State
- GEORGE CROCKETTInstructor in
Electronics-Mathematics
B.S., Mississippi Industrial
M.A., Atlanta University
- CHRISTINE CURRYInstructor in
Business Education
B.S., Langston University
M.A., Indiana UnUniversity
Post Graduate Work, University of California at
Los Angeles, University of Southern California,
University of Mississippi
- HENRY DORSEYInstructor in Art
A.A., Coahoma Junior College
B.A., Jackson State College
Further Study, University of Mississippi
- LOIS E. EDWARDSInstructor in Reading
B.S., Alcorn A. & M. College
M.S., Tuskegee Institute
M.Ed., University of Mississippi
- THOMAS G. EDWARDSInstructor in
Social Science
B.A., Alcorn A. & M. College
M.S., Tuskegee Institute
Further Study, University of Mississippi
- GEORGE ELLISInstructor in Mathematics
B.S., Alcorn A. & M. College
Graduate Study, Kansas State College
M.Ed., Delta State College
- LULA FERGUSONInstructor in High
School English
B.S., Mississippi Valley State College
- ARTHUR FIELDER Instructor in Health & P.E.
B.S., Central State College
Further Study, Knoxville College
M.Ed., Delta State College
- ROWENA FIELDERInstructor in
Business Education
B.A., Bennett College
Further Study, Rust College, Florence State
M.A., University of Mississippi
- JOAN FRIESInstructor in Social Science
B.S., University of Wisconsin
M.A., Stanford University
- JOSEPH FURDGEInstructor in High
School Mathematics
A.A., Coahoma Junior College
B.S., Alcorn A. & M. College
- VASHTI GAINESInstructor in Health
& Physical Education
B.S., Jackson State College
Graduate Study, University of Kentucky
M.A.T., Mississippi State University
- WILLIAM C. GAINESInstructor in Health
& Physical Education
B.S., Jackson State College
Graduate Study, University of Kentucky,
M.Ed., Delta State College
- FRANK WILSON GAMBRELL, JR.Instructor
in Science
B.S., Alcorn A. & M. College
M.S., Kansas State College
Further Study, University of Mississippi
- IRMA MARSHALL GAMBRELLInstructor in
High School Home Economics
B.S., Spellman College
Graduate Study, Kansas State College, Univer-
sity of Mississippi
- RUTH GATESInstructor in English
A.A., Coahoma Junior College
B.S., Alcorn A. & M. College
Further Study, Delta State College

- EARL GOODENInstructor in Physical
Science and Mathematics
B.S., Jackson State College
Further Study, Illinois State University
M.S., University of Illinois
- JOSEPH GOODENInstructor in Art
A.A., Coahoma Junior College
B.S., Jackson State College
- GEORGE GREENInstructor in High
School Mathematics
B.S., Alcorn A. & M. College
Graduate Study, Atlanta University
Graduate Study, New York University,
M.S., Mississippi State University
- VERNON GREENInstructor in Drafting and
Design
B.S., Jackson State College
Further Study, Mississippi State University
- JOSEPH GRIFFINInstructor in High
School Science
A.A., Coahoma Junior College
B.S., Jackson State College
- DAVID HARRISInstructor in Education
A.A., Coahoma Junior College
B.S., Jackson State College
M.A., Tennessee State University
- LEONARD HENDERSONInstructor in
Health & P.E.
B.S., Jackson State College
Further Study, Tennessee State University
- LOIS D. HENDERSONInstructor in High
School Mathematics
B.S., Rust College
M.S., Tuskegee Institute
- JIMMIE RAE HILLCounselor
B.A., Bennett College
M.A., Texas Southern University
- FRANK HOWARDInstructor in Science
A.A., Coahoma Junior College
B.S., Alcorn A. & M. College
M.A., Mississippi State University
- LELA R. HOWARDInstructor in Mathematics
B.S., Alcorn A. & M. College
M.A., Mississippi State University
- DANIEL HUNTInstructor in Social Science
A.A., Coahoma Junior College
B.S., Jackson State College
Graduate Study, University of Southern Illinois
M.S., Delta State College
- ROBERT L. HUNTERInstructor in High
School English
B.A., Jackson State College
- DOROTHY JEFFERSONInstructor in English
A.A., Coahoma Junior College
B.S., Jackson State College
M.Ed., Delta State College
- SEBETHA JENKINSInstructor in English
B.S., Jackson State College
Further Study, North Carolina College,
Loyola University
M.A., Delta State College
- BENJAMIN JONESInstructor in High
School Social Studies
B.S., Alcorn A. & M. College
Further Study, Tuskegee Institute
- GERTIE ALFREDIA KEYSInstructor in Music
B.S., South Carolina State College
M.A., Columbia University
Post Graduate Study, Julliard School of Music,
Memphis State University
- M. RAYFORD KEYSInstructor in Science
B.S., Jackson State College
M.A., Columbia University
Further Study, Oak Ridge, University of Miss.
- GEORGIA AGNEW LEWISInstructor in
English
A.A., Coahoma Junior College
B.S., Jackson State College
M.A., Delta State College
- VIOLET MAGEEInstructor in High
School English
A.A., Coahoma Junior College
B.S., Mississippi Valley State College
- OLENZA McBRIDEInstructor in High
School Social Science
A.A., Coahoma Junior College
B.S., Rust College
- EVA McCUNEInstructor in High School
Social Science
B.S., Alcorn A. & M. College
Graduate Study, Tuskegee Institute,
North Carolina College

- FRANK McCUNE, SR. **Principal of High School**
A.B., Jackson State College
M.S., North Carolina College
Post Graduate Study, Columbia University
- SEZZIE M. McLAURIN **Instructor in High School Home Economics**
B.S., Alcorn A. & M. College
M.S., Tuskegee Institute
Post Graduate Study, Tuskegee Institute, University of Chicago
- JOE C. MYLES **Instructor in Bricklaying**
B.S., Mississippi Valley State College
- FRANKLIN PORTER **Instructor in English**
B.S., Jackson State College
M.S., Jackson State College
- TYRONE POWELL **Instructor in High School Science**
A.A., Coahoma Junior College
B.S., Jackson State College
Graduate Study, University of Mississippi
- BEATRICE REID **Instructor in Social Science**
B.A., Clark College
Further Study, Kansas State,
M.A.T., Mississippi State University
- WANDA REID **Instructor in English**
B.S., Tennessee State University
M.A., Tennessee State University
- THOMAS W. RICHARDSON **Instructor in Art**
A.A., Coahoma Junior College
B.S., Jackson State College
Graduate Study, Chicago Art Institute, University of Mississippi
- CLEAVERN ROBERTSON **Instructor in Social Science**
B.S., Jackson State College
- ANNE ROGERS **Instructor in Social Science**
B.A., State University of New York at Buffalo
M.A., Adelphia University
- WARREN G. SHANKS **Instructor in Vocational Agriculture**
B.S., Alcorn A. & M. College
Graduate Study, Tennessee A. & I. State University
- *JEROME SHAW **Instructor in Biology**
A.A., Coahoma Junior College
B.S., M.A., Delta State College
- BRENDA D. ROBERTSON **Instructor in French & English**
B.S., Jackson State College
- LARRY SCHWANDES **Instructor in High School Science**
B.S., University of Wisconsin
- MARY K. SEALS **Instructor in Health & Physical Education**
B.S., Alcorn A. & M. College
Further Study, University of Mississippi
- ROBERT SHAW **High School Building Trades, Special Needs**
Study, Jackson State College
- LEOLA SMALL **Instructor in High School English**
A.A., Coahoma Junior College
B.S., Jackson State College
- EDDIE C. SMITH **Instructor in Biology**
A.A., Coahoma Junior College
B.S., Tennessee State University
M.S., University of Mississippi
- JOHN SMITH **Instructor in High School Building Trades**
A.A., Coahoma Junior College
B.S., Mississippi Valley State College
- LEON STEWART **Instructor in High School Mathematics**
B.S., Alcorn A. & M. College
Further Study, Mississippi Valley State
- LEARA THOMPSON **Instructor in High School Social Studies**
B.A., Mississippi Industrial College
Further Study, Lincoln University
- *ROOSEVELT WADE **Instructor in Social Science**
B.S., Jackson State College
Graduate Study, Oklahoma State University,
M.A.T., Mississippi State University
- WILLETTE WASHINGTON **Instructor in Biology**
A.A., Coahoma Junior College
B.S., Jackson State College
- *HENRY WHITE **Instructor in English and Foreign Language**
B.S., Alcorn A. & M. College
Further Study, Mississippi State University
- *On leave

JIMMY WILKINSInstructor in High School
Mathematics
A.A., Coahoma Junior College
B.S., Alcorn A. & M. College
M.A., Delta State College

LAURA WILKINSInstructor in English
B.S., Alcorn A & M College
Further Study, Delta State

RAYMOND WILLIAMSInstructor in
Mathematics
B.S., Mississippi Valley State College
M.A., DePauw University

ALMA JEAN WOODSInstructor in High
School English
A.B., Tougaloo College

**ADMINISTRATIVE AND OTHER
STAFF PERSONNEL**

GOTREA L. BROWN, JR.Superintendent of
Buildings & Grounds
A.A., Coahoma Junior College
B.S., Jackson State College

BEATTA CARSONSecretary
A.A., Coahoma Junior College
B.S., Alcorn A. & M. College

EVA MAE CHILDRESSHigh School Secretary
Diploma, Henderson Business College
B.S., Alcorn A. & M. College
Further Study, University of Mississippi

MARY E. COLLIERHigh School Secretary
A.A., Coahoma Junior College

ROBERT GRANTDean of Men
B.S., Tennessee State University

MIRAN D. GREENLibrarian
B.S., Southern University
Graduate Study, University of Wisconsin,
Atlanta University, Chicago Teachers College
M.L.S., University of Mississippi

GARDENIA P. HICKSSecretary
A.A., Coahoma Junior College

LILLIAN JEFFERSONSecretary
Diploma, Henderson Business College
Further Study, Jackson State College

LAURA JOHNSONLibrary Assistant
B.S., Delta State College

AUSTIN H. JONES, JR.Accountant
B.S., St. Benedict's College

DOROTHY MICOUAssistant Matron
Study, Mississippi Valley State College
Mississippi State University

GRADY MITCHELLAssistant Dean of Men
A.A., Coahoma Junior College

DERMA MOTONLibrary Assistant
A.A., Coahoma Junior College

MYRTLE ROSE REIDSecretary
B.S., Mississippi Valley State College

HELEN ROBINSONSecretary
Study, Mississippi Valley State College
Henderson Business College

TENNIE SELFHigh School Lunchroom
Supervisor

ROBERT SHAWMaintenance
Study, Jackson State College,
Itawamba Junior College

ELNORA STASHERSecretary
A.A., Coahoma Junior College
Study, Mississippi Valley State College

JO LOUISE STEWARDBookkeeper
A.A., Coahoma Junior College
B.S., Alcorn A. & M. College

ANNETTE STEWARTNurse
LPN, Mississippi Valley State College

ADA C. THOMASLibrary Assistant
A.A., Coahoma Junior College
B.S., Mississippi Valley State College

ROSETTA WESTONSecretary
A.A., Coahoma Junior College
B.S., Alcorn A. & M. College

PEARLIE M. WHITLEYSecretary
A.A., Coahoma Junior College

ALBERT WILLIAMSVocational Counselor
B.S., Tougaloo College
Further Study, Delta State College

ALMEAD V. WILSONMatron

LONNIE M. YOUNGSecretary
B.S., Alcorn A. & M. College

ARTIS FERGUSONAuto Mechanics
Study, Mississippi Valley State College

ZOLA HUDSONTitle I, Teacher Aide
Study, Coahoma Junior College
Study, Mississippi Valley State College

JESSIE MAE MCGREGORYTeacher Aide,
Vocational Home Economics

COAHOMA JUNIOR COLLEGE
 &
AGRICULTURAL HIGH SCHOOL
CLARKSDALE, MISSISSIPPI
 1971-72

SCHOOL CALENDAR

August

- 26-27 High School Pre-School Planning Conference and Faculty Workshop
- 29 P.T.A. Meeting 4:00 P.M.
- 30 Registration 11th & 12th Grades
- 31 Registration 9th & 10th Grades
- 30-31 Coahoma Junior College Fall Planning Conference and Workshop

September

- 1 High School Classes Begin
- 1 Dormitories Open
- 2-3 Freshman Orientation
- 4 Freshman Registration
- 6-7 Sophomore Registration
- 8 Junior College Classes Begin

October

- 8 Last Day for Changes in Program
- 14-15 Mid-Quarter Tests
- 29 High School Mid-Semester Tests

November

- 18-19 Pre-Registration, Winter Quarter
- 22-24 Fall Quarter Examinations
- 25-28 Thanksgiving Holidays
- 29 Registration Continued
- 30 Classes Begin

December

- 18 Christmas Holidays Begin

January

- 2 Christmas Holidays End
- 3 Classes Resume 8:25 A.M.
- 13-14 High School Semester Examinations
- 17 Registration (9th - 12th Grades)

February

- 28-29 Pre-Registration for Spring Quarter

March

- 1-3 Winter Quarter Tests
- 6 Spring Quarter Registration
- 7 Classes Begin
- 31 April 3 Easter Vacation

April

- 4 Classes Resume 8:25 A.M.
- 13-14 Mid-Quarter Tests

May

- 22-23 Final Examinations Sophomore and High School Seniors
- 24-26 Final Examinations Freshmen and Grades 9-11
- 28 Commencement Sermon - 10:00 A.M.
- 28 Commencement Exercises - 5:00 P.M.



HISTORICAL SKETCH

By establishing Coahoma County Agricultural High School in 1924, Coahoma County became the first of the counties in Mississippi to provide an agricultural high school for Negroes under the then existing "separate but equal" doctrine of education. The junior college curriculum was added in 1949, and the name of the institution was changed to Coahoma Junior College and Agricultural High School. During its first year of operation, Coahoma Junior College was supported entirely by county funds. During the next year, it was included in Mississippi's system of public junior colleges and became eligible to share in funds appropriated by the state of Mississippi for the support of public junior colleges. Counties other than Coahoma that now support the college are Bolivar, Quitman, and Sunflower.

Since 1965, the institution has been open to all students without regard to race, color, or national origin.

During its history, the institution has been headed by six superintendents and presidents: M. L. Strange, 1924-25; J. H. Moseley, 1925-29; J. W. Addison, 1929-37; J. B. Wright, 1937-45; B. F. McLaurin, 1945-66; and the incumbent, James E. Miller, since 1966.

Increased support has made possible the expansion of physical facilities and instructional staffs to provide improved educational services to a rapidly growing student body.

LOCATION OF SCHOOL

Coahoma Junior College and Agricultural High School is located in Coahoma County, Mississippi, about four miles north of Clarksdale, the county seat. The school site is located on the Friars Point-Clarksdale highway, and is about a ninety-minute ride from Memphis, Tennessee. Transportation to Clarksdale is afforded by taxi service, making it possible for students and residents of the school to commute without difficulty.

Coahoma County is in the heart of the great Mississippi Delta. Its highly productive soil gives the farmer in this section the distinction of being among the wealthiest in Mississippi. Mechanization and improved methods of cultivation have offset production losses, and the county has been able to weather fluctuating economics conditions without serious effect on the school system and other public agencies.

Located near the center of a large farm population, the school is able to provide educational opportunities for many youths, at a minimum cost.

PHILOSOPHY AND OBJECTIVES OF THE SCHOOL

More efficient use of human and natural resources is a goal worthy of the greatest educational endeavors. Considering the fact that Coahoma County abounds in human and natural resources, Coahoma Junior College and Agricultural High School attempts to provide training in the utilization of these human and natural resources, and thereby prepare youth for more effective participation in contemporary society. In keeping with this philosophy, the school has set up the following objectives:

1. To assist and direct youth in the daily use of human and natural resources which lead to more fruitful living.
2. To provide a broad program of general education.
3. To provide two years of elementary training for those interested in becoming teachers.
4. To provide preparation for further college work.
5. To give terminal training in special skills.
6. To provide information and counsel that will assist students in appraising their abilities and direct them in choosing a vocation.
7. To serve the people by providing a center for recreation, learning, and good living.
8. To help out-of-school youth and adults solve problems in the major areas of human needs.

TERMINAL FUNCTIONS

The Administration realizes that many Coahoma Junior College students will receive no further organized training beyond college. For that reason several of the courses offered at Coahoma Junior College are of direct vocational nature. Upon completion of these courses students are better able to earn a living.

DIVISIONS OF THE SCHOOL

Coahoma Junior College and Agricultural High School has three organized divisions, namely: High School, Junior College, and Vocation-Technical area. The divisions are articulated by means of

faculty groups, integration and correlation of subject matter, student activities, and constant evaluation of procedures in terms of the school's objectives.

The High School Division is fully accredited by the Mississippi Accrediting Commission and the Southern Association of Colleges and Schools. The High School Division serves pupils in grades nine through twelve.

The Junior College Division: The Junior College Division provides opportunities in four areas: general education, business education, vocational-technical education, and teacher education. Curricula in each area parallel similar curricula at Mississippi's state-supported four-year colleges and other colleges with similar programs. The student who desires to pursue degrees at such institutions may transfer without loss of credit.

The Vocational-Technical Division: Some students are interested in preparing themselves for a vocation; others are interested in mastering some skilled or semi-skilled trade. Coahoma Junior College attempts to meet the needs of such student by providing training in a limited number of trades.

EVENING SCHOOL

The evening school provides educational opportunities for people who are unable to attend regular classes to register and earn college credit. The standard courses are taught by the regular faculty members or qualified instructors may be selected for a course. The evening school makes available certain non-credit cultural and vocational courses.

Admission requirements are the same as for regular day students. (See admissions)

Evening college classes are organized on the quarter system. (Three times per session). The courses which carry three quarter hours credit meet one night per week from 6:00 P.M. - 9:00 P.M.

ACCREDITMENT

Coahoma Junior College is accredited by the Mississippi State Department of Education and is approved by the State Department of Teacher Education and Certification for training of elementary teachers. The college is endeavoring to operate in accordance with the standards set by the Southern Association of Colleges and Schools. We plan an evaluation of the program by this rating agency.

ALUMNI ASSOCIATION

The Alumni Association of Coahoma Junior College is an organization of former students, both graduates and non-graduates. The purpose of the association is to serve and extend the program of the college, to promote a spirit of fellowship and cooperation among its members, and to solicit their help in the future development of the college.

FOLLOW-UP AND PLACEMENT

The college attempts a follow-up of the Coahoma graduates through the Public Relations Office, through conferences with administrators of senior colleges and Jeanes Supervisors, and through personal conferences with graduates and former students.

Coahoma graduates have made a great contribution by pointing out experiences at Coahoma Junior College which have enabled them to succeed, and by suggesting other emphasis which they wish the college could have given in the two-year program.

THE LIBRARY

The library building was erected in 1954 with funds provided by Coahoma County and the Mississippi Legislature. It is centrally located on the campus. The library consists of reading and conference rooms, a stackroom, and a workroom, with office space.

Resources of the library include some 14,500 volumes (including bound government documents, bound periodicals and books) and 120 current periodicals, plus collections of newspapers, maps, and framed art works. All books are arranged on open shelves available for browsing. The library is open long hours for the convenience of students, and a quiet atmosphere encourages both study and recreational reading.

A vertical file of pamphlets and pictures is maintained. Special emphasis is placed on material relative to education in Mississippi.

The library is constantly improving its facilities and resources to meet curricular and cultural needs.

PUBLIC RELATIONS

The program of public relations at Coahoma Junior College endeavors to foster and maintain

public goodwill toward the institution by evaluating public attitudes, by identifying the policies of the college with the public interest, and by carrying out other activities to earn public understanding and acceptance. Specifically, the Public Relations Office seeks (1) to interpret the College's philosophy and objectives, (2) to stress the public services of the College, (3) to enlist the support of the public, (4) to aid graduates of the College in transferring to the upper division of four-year institutions or in finding employment, (5) to make contact with promising prospective students, and (6) to collect, organize, and interpret follow-up information concerning graduates and other former students of the institution.

AWARDS AND PRIZES

Appropriate awards, prizes, and certificates are presented each year during commencement exercises to outstanding students in various departments of the school. The following awards are given annually by friends of the institution and by the college:

The Frankie Stutts-Gray Memorial Award is a cash award given to a young lady of the College who is determined by a vote of the faculty to exhibit the most ladylike conduct at all times. The award is provided by Mrs. Laura H. Hearn.

The Coahoma Junior College and AHS Scholarship Award is given for high academic achievement.

The Mary Carter Award is a cash award given for good housekeeping among women boarding students.

The Elizabeth Maynard Award is a cash award given for proficiency in science.

The Aaron Henry Citizenship Award is a cash award given on the basis of good citizenship among college students and civic participation.

Lillian Rogers-Johnson Memorial Award is made on the basis of academic potential and Christian character among women.

The Versatile Club Award is a cash award given to a young woman on the basis of high versatility.

HONORS DAY

The formal presentation of prizes, awards, and certificates for distinguished achievement is the main feature of the annual Honors Day Program.

COMMUNITY ACTIVITIES AND SERVICES

The college serves the communities, the counties, and the State in the following ways:

The college faculty members work with the local Jeanes teacher and the county rural teachers in their pre-school conferences in an effort to enrich their programs and to improve the quality of instruction.

The school serves as host to the Junior College Song Festival and the District High School Dramatics Tournament.

The students and faculty members participate in the local church services and carry on vespers for spiritual development.

Members of the Coahoma faculty serve as consultants for pre-school conferences, District and State Teachers Meetings, and as judges for debating and dramatic tournaments.

COAHOMA JUNIOR COLLEGE

Clarksdale, Mississippi 38614

1971-72 SCHEDULE OF STUDENT EXPENSES

With the exception of board, which may be paid in monthly installment at the rate of \$45 per month, all fees and other charges are due and payable on a quarterly basis for college students and on a semester basis for high school students upon completion of registration. General fees and expenses for all students are as follows:

For the assessing of student costs, students are classified into three groups: District, Non-District, and Out-of-State.

District students are those who live in counties that give financial support to Coahoma Junior College - Coahoma, Quitman, Bolivar and Sunflower.

Non-District students are those students whose homes are in the state of Mississippi, but in counties other than the supporting counties.

Out-of-State students are those whose legal residence is outside the state of Mississippi.

EXPLANATION OF FEES

MATRICULATION FEE—All students will be charged a general matriculation fee of \$40.00 per quarter. This fee is due and payable at registration. The fee covers matriculation, library, medi-

DAY STUDENTS

	District	Non-District	Out-of-State
Matriculation fee, Per quarter	\$ 40.00	\$ 40.00	\$ 40.00
Publication fee, First Quarter	9.00	9.00	9.00
Maintenance fee, Per quarter		30.00	30.00
Tuition, Per quarter			100.00
DUE UPON REGISTRATION	49.00	79.00	179.00
Total fees, Second quarter	40.00	70.00	170.00
Total fees, Third quarter	40.00	70.00	170.00
TOTAL FOR YEAR	\$ 129.00	\$ 219.00	\$ 519.00

BOARDING STUDENTS

	District	Non-District	Out-of-State
Matriculation fee, Per quarter	\$ 40.00	\$ 40.00	\$ 40.00
Publication fee, First quarter	9.00	9.00	9.00
Maintenance fee, Per quarter		30.00	30.00
Tuition, Per quarter			100.00
Room, Board & Laundry (\$45.00 per month)	45.00	45.00	45.00
DUE UPON REGISTRATION	94.00	124.00	224.00
Additional Board, First quarter	90.00	90.00	90.00
Total, First quarter	184.00	214.00	314.00
Total, Second quarter	175.00	205.00	305.00
Total, Third quarter	175.00	205.00	305.00
TOTAL FOR YEAR	\$ 534.00	\$624.00	\$924.00

OTHER COSTS

Course Fees

Students enrolled in certain courses are required to pay special course fees. These courses and fees are as follows and are due the time of registration.

COURSES	FEES, PER QUARTER	COURSES	FEES, PER QUARTER
Science	\$ 3.00	All Voc-Tech.	\$ 3.00
Art	2.50		
Business	3.00		

Late Registration Fee \$5.00

Room Reservation \$5.00

Application Fee \$5.00

cal insurance, athletic events, and lyceum attractions.

OUT-OF-DISTRICT MAINTENANCE FEE—Mississippi students residing outside the district will be charged the general matriculation fee of \$40.00 plus an out-of-district maintenance fee of \$30.00 per quarter.

OUT-OF-STATE TUITION—A non-resident tuition charge of \$130.00 per quarter is assessed all regular students whose parents or guardians are

not legal residents of Mississippi. This tuition helps pay instructional, administrative, and other operational expenses. Out-of-state tuition is due and payable at the beginning of each quarter.

PUBLICATIONS FEE—A fee of \$9.00 per year will be charged to each student for his copy of the college yearbook, *The Coahoman*, and the school newspaper.

In addition to the above costs, students must pay course fees as set forth above.

HIGH SCHOOL FEES

	Per Semester	Per Year
Activity	\$ 4.50	\$ 9.00
Tuition:		
Out-of-County	20.00	40.00
Out-of-State	50.00	100.00
Over 21 Years of age	30.00	60.00

REFUND OF FEES, TUITION, ROOM AND BOARD

Refund Policies:

Students withdrawing from the college before the end of the quarter should file a Withdrawal Form with the Dean of the college and, the Registrar. A copy should be delivered to the Business Office with the Student's Activity Card and Identification Card.

Refunds in general will be estimated from the date of application. If a student withdraws within two weeks after the beginning of classes for the quarter, a refund of 80 percent will be made of the total fees paid. Each week thereafter, the amount will be reduced 20 percent except that no refunds will be made after four, (4) weeks.

Refunds are made on board charges during the quarter if a student misses his meals for seven, (7), consecutive day due to emergency leaves or officially withdraws.

DATE ROOM AND BOARD SHOULD BE PAID

The cost of room and board is payable in advance and not later than 10 days after the date on which it becomes due as shown in the Schedule of Payments. It is payable on a four-week basis rather than on a calendar month basis.

BOARD (INCLUDING ROOM AND LAUNDRY) CALENDAR

September 1	First payment due
September 29	Second payment due
October 27	Third payment due
November 24	Fourth payment due
January 7	Fifth payment due
February 4	Sixth payment due
March 4	Seventh payment due
April 1	Eighth payment due
April 29	Ninth payment due

BOOKS AND SUPPLIES

Junior College: Textbooks for courses in the Junior College Division may be purchased from the school's bookstore. Cost of books range from \$50 to \$70 and upwards per quarter.

High School: The State of Mississippi furnishes free textbooks for pupils in the High School Divisions. A careful audit is made of all textbooks furnished high school pupils and all books lost or damaged must be paid for unless the books were destroyed by fire or other factors beyond the pupil's control.

School supplies: Paper, pencils, ink, and other student supplies are available in the campus store. High school pupils must pay for all workbooks.

SPECIAL FEES:

FEES FOR SPECIAL COLLEGE STUDENTS:

These fee are for students who are taking less than the minimum college load in the day or evening program.

Courses taken for credit, per quarter hour.....	\$8.00
Auditing Fee, per quarter hour.....	\$4.00

GRADUATION FEE:

A \$12.00 graduation fee is charged all students who are graduating. This includes diploma fee and cap and gown rental.

A student's account must be cleared in the business office before a diploma is issued or before a transcript is sent out.

STUDENT FINANCIAL AIDS

Coahoma Junior College provides financial assistance to eligible students through a coordinated program of student financial aids as follows:

NATIONAL DEFENSE STUDENT LOANS. National Defense Student Loans are available to United States citizens now enrolled or about to be enrolled in Coahoma Junior College as full-time students provided that such students are in need of financial assistance and are in academic good standing, and provided that all other terms and conditions of the NDSL program are compiled with. These are long-term, low-interest loans that carry special scholarship provisions for borrowers who later enter specified areas of public education.

COLLEGE WORK-STUDY PROGRAM. Students who can establish a need for financial assistance in keeping with the regulations governing the College Work-Study Program and who are accepted into the program may work up to 15 hours per week on campus during out-of-class periods while the regular school term is in session at a minimum rate of \$1.60 per hour. During the summer months, eligible students who have enrolled for the following fall quarter may work 40 hours per week. For the summer program, boarding and lodging facilities are available at the regular student rate.

EDUCATIONAL OPPORTUNITY GRANTS. Educational Opportunity Grants are designed to

aid students who have exceptional financial need. To be eligible for this grant, a student must be accepted for enrollment as a full-time student, show evidence of academic or creative promise, and be capable of maintaining good standing in his course of study. Grants range from \$200 upward and are matched by an equal amount of other assistance, the combined total not to exceed the determined total need of the student.

COAHOMA JUNIOR COLLEGE WORK-AID PROGRAM. The institution provides a limited number of students who are deserving and energetic, the opportunity to work at assigned tasks to help defray educational costs. Such students are paid the prevailing student rate per hour.



ACADEMIC REQUIREMENTS AND REGULATIONS

ADMISSION POLICIES

Coahoma Junior College operates under the "open door" policy.

Admission to Coahoma Junior College is granted only on the basis of application. Application forms may be secured from the Registrar's Office.

ADMISSION REQUIREMENTS FOR ACADEMIC AND TECHNICAL STUDENTS

1. A student may qualify academically for admission to the college by a Certificate of Graduation from an approved high school, showing a minimum of (15) units; verified by a transcript from the high school. This transcript should not be sent until after graduation from high school.
2. For mature students (above 20 years of age), satisfactory scores on the high school level General Education Development Test may

be accepted in lieu of a high school Certificate of Graduation.

3. Special Admission for High School Students of Demonstrated Ability: Students who have completed a minimum of 15 high school units but who have not been graduated from high school may be admitted if they rank in the upper quartile of their high school class and have satisfactory scores on the American College Test. Such students must be recommended for college work by their high school principals.
4. Transfer Students: A student from a college of recognized standing may be admitted to the college on the basis of an official transcript of credits from the institution previously attended.

Transfer credit will be accepted in accordance with the following policy: A student whose transcript indicates an overall quality point average equal to a "C" or better will be allowed to transfer all courses on which he has made a "D" or above. If the transcript

indicates an overall average of below "C", only those courses bearing grades of "C" or better will be accepted.

5. Applicants must submit a completed Medical Form, signed by a physician.
6. ACT is required, but there is no cut-off score.

ADMISSION REQUIREMENTS FOR VOCATIONAL STUDENTS

Students may be admitted to a vocational program at Coahoma Junior College if he is interested in the trade and of college age, (at least 18 years of age). A completed Medical Form must be submitted. No ACT is required.

REQUIREMENTS FOR GRADUATION

Junior College

An Associate in Arts Degree or Associate in Science Degree from Coahoma Junior College will be awarded to each student who (1) satisfies the general requirements of one of the divisions as stated in the catalog; (2) earns the total number of quarter hours credit and honor points prescribed for a particular course; (3) has satisfactorily met his financial obligations to Coahoma Junior College; and (4) demonstrates the quality of character essential for responsible citizenship. A minimum of 95 quarter hours and 95 quality points with a quality point average of 1 based upon all courses attempted is required for graduation from the Junior College Division.

Candidates for high school diplomas must complete a minimum of 18 units of work on the high school level, distributed as follows:

Subject	Units
English	4
Mathematics	2
Social Science	2
Science	2
Electives	8

REGISTRATION

Registration for each quarter will take place on the dates stated in the college calendar. Failure to register on the dates set aside for this purpose will result in a charge of a late registration fee of \$5.00. All students are expected to register at

the beginning of the quarter and remain in classes until the end of the quarter.

CHANGE OF SCHEDULE

Change in schedule may be made only with special permission from the student's advisor and the Dean. This includes adding and dropping of courses. All changes must be made not later than the date designated in the college calendar. The student must file a change of schedule form with the registrar after the change has been approved by the Dean.

A fee of \$2.00 must be paid for each change in schedule. This includes adding or dropping courses.

No student will receive credit for a course in which he is not enrolled. Any student who unofficially drops a course will receive a grade of "F."

LOAD OF WORK

The normal student load is fifteen to eighteen quarter hours. Students who have a 2.0 point "B" average or above, may be permitted to carry a maximum of 20 quarter hours of work. College sophomores may take twenty hours during any one of their last three quarters work provided they have not made a grade of lower than "C" in the previous quarter.

Students carrying remedial courses must carry on abbreviated program until they no longer need remedial courses in the tool subjects.

UNIT OF CREDIT

The Junior College Division operates on the quarter system, having changed from the semester system in the summer of 1952. The unit of credit is the quarter hour. Quarter hour credit is determined by the number of hours a course meets per week and, except in the case of laboratory work, carries credit according to the number of hours the course meets per week.

SCHOLARSHIP

A junior college student must earn passing grades in at least 12 quarter hours of work. A student who fails to meet this scholarship requirement, will not be permitted to enroll for the next quarter unless special permission is granted by the Dean.

GRADES AND HONOR POINTS

TESTS: In the Junior College Division each quarter is divided into two six-week periods, and in the High School Division each semester of the school year is divided into two nine-week periods. A written test is required of all students at the end of these periods. Students who fail to take a test will be given a grade of "I" for the period, and must take the test or tests missed before a final grade is given for the quarter or semester.

The Grading System: College student progress in all departments is evaluated according to the following scale:

Grade	Scale	Honor Points
A—Excellent	90-100	3
B—Good	80-89	2
C—Fair	70-79	1
D—Passing	60-69	0
F—Failure	below 60	-1
I—Incomplete*		
W.F.	Withdrew Failing	
W.P.	Withdrew Passing	

*Given when a student fails to take an examination or test; or does not complete all assignments of the course.

Honor points are used to determine scholarship averages. A student who has earned 140 Honor Points during his course shall graduate with Honors; one who has earned 165 Honor Points shall graduate with **Special Honors**. An Honor Certificate will be awarded students who have earned 165 or more honor points.

A minus Honor Point is given each grade of "F," but, when the student makes up the failing grade by repeating the course, the minus Honor Point is removed.

HIGH SCHOOL GRADING SYSTEM

A—Superior	95-100
B—Very Good	85-94
C—Good	75-84
D—Fair	70-74
F—Failing	Below 70

Parents or guardians will be mailed a record of student's grades within a reasonable time after the close of each examination period. Students are urged to check with the Registrar to determine their scholarship record.

PROBATION

A student will be placed on probation at the end of any quarter in which his honor-point average is below five-tenths of one point. He will be given special help through counseling and remedial work.

Students on probation for scholarship must earn passing grades in all work assigned during the quarter in which they are on probation. If they do not earn such grades, they will be required to withdraw from the institution.

ATTENDANCE

All students are expected to attend each meeting of every course in which they are enrolled. When a student has been absent two consecutive weeks without previous explanation, the student's name is dropped from the rolls, and permission to be reinstated must be obtained from each instructor in which class he is enrolled.

EXCUSED ABSENCES

Absences are automatically excused when students are on official trips authorized by the Dean. This would include class trips, athletic teams, student organizations, or delegates to student meetings. Absences resulting from illness are excused when the student presents statements from his doctor, the Dean of Men, the Dean of Women or other duly authorized persons.

When the student has been absent, instructors will report unexcused absences to the Dean's office. Instructors are expected to guide and counsel students who are absent from the courses.

At the discretion of the Dean, a student may be granted an excuse for the absence. Unexcused absences will be considered "cuts" and when the number of "cuts" in any class exceeds the number of credits for the course, one Honor Point will be deducted from the student's aggregate scholarship average for each absence above the number of "cuts" allowed for the course.

WITHDRAWALS

A student withdrawing from the institution must execute a withdrawal form and file it with the Dean of Instruction. Failure to do so will result in the loss of the right to honorable dismissal or re-entrance to the college.

EXAMINATIONS AND TESTS

PLACEMENT AND MAKE-UP EXAMINATIONS: Placement examinations are given to entering students during the first week of each semester or quarter. Students in Elementary and High School Divisions who transfer to Coahoma County Agricultural High School from non-accredited elementary and high schools are required to take this examination. Arrangements for placement examinations should be made with the Registrar or Principal upon arrival.

Make-up examinations are given to all students who, because of unavoidable circumstances, have missed an examination during the school term. Examination deficiencies must be removed during the quarter or semester following the one in which the deficiency occurred. Permission to take make-up examinations must be secured from the Dean of Principal prior to the date for examinations. Teachers are not to give make-up examinations to any student who does not have a permit. A fee of one dollar will be charged for each make-up examination.



STUDENT LIFE AND SERVICES ORIENTATION

The orientation period is designed to help entering freshmen become adjusted to life at Coahoma Junior College and Agricultural High School. Upon arrival of freshmen on the campus the orientation period begins. During this period the Director of Student Personnel and a committee made up of a selected group of sophomore college students and faculty representatives assist the new students in becoming acquainted with other students, faculty members, advisors, the school rules, regulations and policies, and with the various sites on the campus and in the local community. An envelope consisting of orientation material is given each freshman. Placement examinations, environmental tours, talent and social night, lecture-discussion meetings, and registration are some of the activities during this period.

This orientation period is continued as a part of the regular college curriculum for one quarter.

STUDENT HANDBOOK

The Personnel and Guidance Committee edits a student handbook which is essentially a guidebook designed to acquaint the student with the privi-

leges and responsibilities, the educational goals, the rules, the regulations, policies and traditions that affect his academic and social life at Coahoma Junior College and Agricultural High School.

REGULATIONS GOVERNING STUDENTS

Coahoma Junior College seeks to develop its students into good citizens. The accepted standards of good manners, goodwill and citizenship will govern student behavior.

The student guidebook, **The Maroon and White**, carries a complete list of the regulations governing student life at Coahoma Junior College. General regulations are as follows:

1. Students should provide linen, blankets and toilet articles. This should include two bedspreads, four sheets, two pillow cases, four towels and enough blankets for comfort. Students shall furnish supplies needed to make their rooms comfortable.
2. Rooms must be kept clean and sanitary at all times. Bedlinens must be changed each week or more often if necessary. Inspection will be made of rooms each morning and violation of regulations subjects the student to disciplinary action.
3. When expecting guests for overnight visits, dormitory residents must secure visiting permits from the dormitory supervisors; otherwise, guests will not be granted permission to visit in the dormitory. If guests are to be served in the cafeteria, proper notification should be given the cafeteria manager as to the number of meals desired, and such meals will be paid for at prevailing rates.
4. Lost, damaged or destroyed furniture must be replaced or put in good repair by the occupant(s) responsible for same.
5. Off-campus visiting is not encouraged. A student with the approval of the administration, his or her parents and the prospective hostess may be permitted to visit off campus when the proper forms have been completed.
6. The use of instruments or devices in the dormitories which endanger the safety of the occupants and the dwellings is prohibited.
7. Automobile riding for women students is forbidden without special permission by the dormitory supervisor.
8. Dormitory students are expected to attend Sunday School and Vesper Services each Sun-

day. Students may attend the worship services of churches in the community when given permission by the proper dormitory supervisors.

9. Conduct: The school reserves the right to request at any time a student's withdrawal, if the student's conduct is adjudged to be injurious to its reputation or detrimental to the character of other students enrolled at the school.
10. Gambling and the use of intoxicants, firearms and other weapons are forbidden. Violators are subject to dismissal or disciplinary action.
11. The record of martial status should be filed with the High School principal and College Personnel Director, and if any immediate change is made the above persons should be notified.

STUDENT HEALTH SERVICES

The college provides health services for students by utilizing the services and facilities of the Coahoma County Community Hospital and local medical and dental personnel. The service includes physical examination of all entering students. Physical examinations are mandatory, and registration is not complete until a report of the examination is filed in the Student Personnel Office.

Junior college students participate in the Mississippi Hospital and Medical Service Plan which provides certain hospital, surgical, and medical benefits as specified in the Master Contract of the plan that is issued to the college. Students requiring medical, dental, or other health services not covered by the plan are responsible for their own bills. These medical or dental bills are to be paid directly to the agency rendering the service. Certain services are rendered free of charge by the Coahoma County Health Department, e.g., chest X-ray, immunizations against common communicable diseases, and advisory services.

CAMPUS RESIDENCE

The young men and the young women of Coahoma Junior College who do not live at home may be housed in dormitories on the campus. Each dormitory has a supervisor who is a member of the Personnel and Guidance Committee. Through their respective House Councils the students and house supervisors adopt regulations designed to promote good residential life. The students make

themselves subject to the regulations of their House Councils in matters of daily routine and minor discipline.

RELIGIOUS LIFE

Coahoma Junior College recognizes the importance of a religious life and lends encouragement to students seeking guidance in this direction. The religious life of Coahomans may be enriched through the following channels: The campus Sunday School, the Sunday Vespers, Religious Emphasis Week, the B.S.U., the Y.W.C.A., the Y.M.C.A., the Hi-Y and the Tri-Hi-Y. Local churches welcome Coahoma students and faculty, and participation in the religious activities of the local churches is encouraged by the college.

SOCIAL LIFE

Formal and informal entertainments, banquets, weekly recreation hours, calling hours, and other opportunities for social contacts are planned cooperatively by students and faculty members throughout the year. Through these occasions opportunity is provided for the normal development of the social graces.

STUDENT ACTIVITIES AND ORGANIZATIONS

Coahoma student activities consist of programs designed to serve the culture, educational, recreational and social interests of the general student body.

Education Club: Membership in the education club gives experiences in leadership and group activities, and acquaints students with the opportunities and responsibilities of the teacher.

Literary Clubs: The high school and college English classes sponsor separate literary clubs, but in each club the purpose is to stimulate and cultivate in the students an appreciation for things literary and artistic.

The High School Literary Club affords opportunity for its members to review books, participate in discussions, oratorical contests and debates. Each year representatives of the club participate in the district and state debates and literary meets.

The Junior College Literary Club is an informal organization. In the meetings, students review and discuss books and enjoy individual and group read-

ing of prose and poetry. Opportunity is also given for public discussion and extemporaneous speaking.

The College Literary Club sponsors an annual lyceum attraction which brings to the campus outstanding artists.

Dramatics: The two dramatic organizations on the campus are The High School Dramatic Club and the College Varsity Players. Each group fosters an interest in all phases of dramatic art. Interested students are admitted after tryouts.

The Varsity Players present one play each quarter. The High School Dramatic Club gives at least one play on campus and presents a one-act play in the district and state dramatic tournaments each year.

Trades and Vocational Education Club: This club is composed of high school boys enrolled in the vocational trades classes. This organization is affiliated with the Mississippi Youth Industrial Association. Some of the purposes of this club are listed as follows:

To promote thrift through the intelligent use of the products of industry.

The wise use of educational and training facilities.

To promote the spirit of craftsmanship.

To encourage interest in hobbies and leisure time activities.

To promote good fellowship through friendly competition.

The annual "Round-Up," a social event, is one of the highlights of the year's activities.

Future Homemakers of America: This is an organization of high school pupils studying homemaking. This organization has for its purpose the development of social qualities, the provision for wholesome recreational activities, and the promotion of better home life for its members and their families.

The club is affiliated with the district, state, and national F.H.A. Associations. One of the annual events sponsored by the club is the Mother-Daughter Banquet.

Future Farmers of America: The Future Farmers of America is an organization which offers excellent opportunities to high school boys interested in agriculture as a vocation. Notable phases of

this organization are a well-balanced program of character building, wholesome recreational activities and lasting friendships through contact with fellow club members.

The Agricultural High School F.F.A. is affiliated with the district, state, and national chapters and has won high honors in all phases of the work in each of these associations. One of the annual events is the Father-Son Banquet.

Class Organizations: The students in the high school and the college are organized into class clubs. In their meetings throughout the year, they and their sponsors plan and carry out social and other class programs.

Phi Beta Lambda is a business organization which was organized to: (1) develop leadership experience that will enable students to participate effectively in business, professional, and community life, (2) offer an insight into and provide an opportunity for participation in the decision-making process, (3) aid in the selection of a field of vocational specialization, (4) engage in projects that will strengthen student background in the area of business (5) develop loyalty to the school and for the democratic way of life (6) broaden students' understanding of business and its complexities and (7) promote scholarship.

The Coahoma Junior College Chapter of Phi Beta Lambda received its chapter to operate as a member of the national organization on January 23, 1968. The chapter consists of students in the Department of Business Education and Vocational Business.

Science Symposium Club: The objective of this club is to keep abreast of the new scientific developments through current literature and activities. This organization is composed of science majors and other students who are interested in the objectives of the club.

Athletics: The school provides opportunities for students to participate in both inter-scholastic and intra-mural athletics. Varsity teams are sponsored for football, basketball and track. Physical fitness, good sportsmanship and teamwork are stressed. Letters are awarded players who prove themselves worthy.

Musical Organizations: Students with musical ability are afforded many opportunities to develop their talents at Coahoma Junior College and Agricultural High School.

The Choir is a volunteer organization designed to give students an opportunity to participate in group singing. This organization introduces students to the best in church and classical music. Upon the permission of the Director students of any classification may join. The choir participates in state meetings and festivals, gives concerts on and off campus, and renders music for Sunday Vespers.

The Band: The institution's band is composed of elementary, high school and junior college students. Under its competent director it has achieved acclaim for its proficiency. It is a very popular and essential part of campus and off-campus activities.

Some of the band appearances at football games, 4-H club rallies, Christmas parades, the Memphis Cotton Makers Jubilee and state festivals. The band originated and sponsors annually the North Delta Band Clinic.

Student Council: The Coahoma Junior College and Agricultural High School Student Council serves as an instrument in democratic education. It provides for student participation in school government; establishes better student-teacher relationships; affords training in citizenship, and insures a sincere respect for the aims and objectives of Coahoma Junior College and Agricultural High School. It is composed of class and club representatives from the high school and college divisions and a faculty advisor from each division. The Coahoma Junior College and Agricultural High School is a member of the Regional Association of Student Councils.

The Coahoman is the school yearbook published annually by a selected student staff. It succeeds **The Aggian** which was edited formerly by the Agricultural High School.

The Forum: The weekly forums under the sponsorship of the Social Science Department provide opportunity for students to make use of current reading materials in discussing vital social problems.

INFORMATION AND REGULATIONS FOR VETERANS

Both college and high school courses are open to veterans of the United States Armed Services in

accordance with the provisions governing educational benefits for Veterans.

In addition to the following regulations, veterans are subject to such regulations as the Veterans Administration shall from time to time make.

In order to expedite time in receiving subsistence checks, veterans are advised to contact their local Veterans Administration office at the earliest possible date after discharge to apply for educational benefits. If a veteran is eligible for training he will receive a certificate of eligibility, which he should present at the time of enrollment.

Veterans who enroll in high school must have completed elementary school, an official record of which must be on file here at the time of enrollment.

CLASS LOAD: Veterans enrolled in the junior college must carry a minimum of 14 quarters hours to be eligible for full-time training and entitled to full training allowance. A veteran enrolled in high school must carry the number of units required for the respective grade in which he is classified.

CHANGE OF PROGRAM: A change of program is a change in the educational, professional, or vocational objective for which the veteran originally applied, with corresponding changes in the type of courses which may be required to attain the new objective.

- a. The law permits the veteran to make one change of program when the veteran's initial program is completed or terminated under satisfactory conditions.
- b. Veterans Administration Counseling is required when the veteran's initial program is discontinued because of unsatisfactory progress or conduct.
- c. Veterans Administration Counseling is also required to make a second change of program. Not more than two changes of program will be approved under any circumstances.

PAYMENT OF COLLEGE BILLS AND FEES: All fees—including tuition, board and room—and supplies are paid by the veterans on the same basis as that of other students.

ATTENDANCE: Regular class attendance is required of veterans on the same basis as that of other students. A certificate of attendance will be sent to veterans each month that he must com-

plete and have signed by the College Advisor to veterans. All absences must be reported on this certificate in accordance with the law, whether the absence is because of illness or for some other reason.

PROGRESS IN TRAINING: Veterans are expected to make satisfactory progress in their courses, and when they fail to do so, their training is in-

terrupted. The Veterans Administration will be given prompt notice of action.

CONDUCT: Veterans' conduct must at all times, both on and off the campus, be maintained in a satisfactory manner. All regulations governing the conduct of regular students must be observed by the veteran; failure to do so will result in the termination of his training.

PROGRAM OF STUDIES CURRICULA NOTICES

During the 1952-1953 school year the junior college curriculum was expanded to meet the needs of an increased enrollment and the new requirements of the state for teacher certification. In 1956 and in 1959 the curriculum was further broadened to include additional courses in general education.

In 1964 and 1965 the curriculum was enlarged to include additional Vocational Technical Work. Curricula in Drafting and Design, and Building Construction Technology were added.

In 1966 the Curriculum was broadened to include a major in Art and Electronics Technology. These offerings are incorporated in the curriculum of this edition of the college Bulletin.

In 1967 the Business Education Program was expanded to include a major in Secretarial Science for students who wish to find employment upon completion of this two-year program.

In 1968 an Art Program was added to the curriculum of Coahoma Junior College.

GENERAL EDUCATION

To achieve the objectives of Coahoma Junior College, a basic core of general education courses is provided students in all areas. These courses



are designed to provide a body of knowledge which will develop aesthetic appreciation, understanding of the world in which we live, social, moral and spiritual values, effective communication skills, wise use of scientific knowledge, and a balanced appreciation of man's relation to his environment. To this end an effort is made to show the ever present inter-relatedness of art, music, literature, science, communication and the social sciences.

COAHOMA JUNIOR COLLEGE CURRICULA

ART CURRICULUM

FRESHMAN YEAR	First Quarter	Second Quarter	Third Quarter
ENG 101, 102, 103, English	3-3	3-3	3-3
EDU 111, 112, Gen. Psy.	4-4	3-3	
EDU 101, Intro. to Ed.			3-3
SSC 101, 102, 103, Soc. Science	3-3	3-3	3-3
HEA 101, Health	4-4		
ART 101, Art		6-4	
*ART 102, Art			6-4
BIO 101, 102, 103, Biology	4-3	4-3	4-3
PED 101, 102, 103, Phy. Ed.	2-1	2-1	2-1
EDU 100, Orientation	1-R		
-Elective		3-3	3-3
	21-18	24-20	24-20

SOPHOMORE YEAR	First Quarter	Second Quarter	Third Quarter
ART 201, 211, 212, Art	6-4	6-3	6-3
ENG 201, 202, 203, English	3-3	3-3	3-3
SSC 201, 202, 203, Soc. Science	3-3	3-3	3-3
MAT 101, 102, Math.	3-3	3-3	
*ART 103, Art			4-4
PSC 201, 202, 203, Phy. Sci.	4-3	4-3	4-3
PED 201, 202, 203, Phy. Ed.	2-1	2-1	2-1
	21-17	21-16	22-17
*Art 102—Offered two quarters and open to all students. Required of Art Majors.			
Art 103—Offered three quarters. Required of Art, Health and P.E. Majors and open to all students.			
-Art 201—Designed specially for Elementary Educ. Majors, where it is required; also required of Art Majors.			

BUSINESS EDUCATION CURRICULUM

FRESHMAN YEAR	First Quarter	Second Quarter	Third Quarter
ENG 101, 102, 103, English	3-3	3-3	3-3
SSC 101, 102, 103, Soc. Sci.	3-3	3-3	3-3
BUS 101, Intro. to Bus.	4-4		
EDC 102, 103, Education		3-3	3-3
TYP 101, 102, 103, Typewriting	2-5	2-5	2-5
SHD 101, 102, 103, Shorthand	2-4	2-4	2-4
BIO 101, 102, 103, Biology	3-4	3-4	3-4
PED 101, 102, 103, Phy. Ed.	1-2	1-2	1-2
	18-25	17-24	17-24

	First Quarter	Second Quarter	Third Quarter
SOPHOMORE YEAR			
ENG 201, 202, 203, English	3-3	3-3	3-3
HIS 201, 202, 203, W. History	3-3	3-3	3-3
MAT 101, 102, Mathematics	3-3	3-3	
BUS 201, Office Machines			3-3
TYP 201, 202, 203, Typewriting	2-5	2-5	2-5
SHD 201, 102, Shorthand	2-4	2-4	
SHD 203, Dic. & Trans.			2-4
BUS 201, 202, 203 Sec. Proc. & Fil.	3-3	3-3	3-3
PED 201, 202, 203, Phy. Ed.	1-2	1-2	1-2
	17-24	17-24	17-23

GENERAL BUSINESS CURRICULUM

	First Quarter	Second Quarter	Third Quarter
FRESHMAN YEAR			
ENG 101, 102, 103, English	3-3	3-3	3-3
SSC 101, 102, 103, Soc. Sci.	3-3	3-3	3-3
BUS 101, Intro. to Bus.	4-4		
EDC 102, 103, Education		3-3	3-3
ECN 111, 112, 113, Economics	3-3	3-3	3-3
TYP 101, 102, 103, Typewriting	2-5	2-5	2-5
BIO 101, 102, 103, Biology	3-4	3-4	3-4
PED 101, 102, 103, Phy. Ed.	1-2	1-2	1-2
	19-24	18-23	18-23

	First Quarter	Second Quarter	Third Quarter
SOPHOMORE YEAR			
ENG 201, 202, 203, English	3-3	3-3	3-3
HIS 201, 202, 203, W. History	3-3	3-3	3-3
MAT 101, 102, Mathematics	3-3	3-3	
BUS 201, Office Machines			3-3
ACC 201, 202, 203, Accounting	3-4	3-4	3-4
BSL 201, Business Law	4-4		
BSC 201, Bus. Com.		4-4	
PED 201, 202, 203, Phy. Ed.	1-2	1-2	1-2
Elective			4-4
	17-20	17-20	17-19

SECRETARIAL SCIENCE CURRICULUM

	First Quarter	Second Quarter	Third Quarter
FRESHMAN YEAR			
ENG 101, 102, 103, English	3-3	3-3	3-3
SHD 101, 102, 103, Shorthand	2-4	2-4	2-4
MAT 101, 102, Mathematics		3-3	3-3
TYP 101, 102, 103, Typewriting	2-5	2-5	2-5
PED 101, 102, 103, Phy. Ed.	1-2	1-2	1-2
BUS 101, Intro. To Bus.	4-4		
ECN 111, 112, 113, Economics	3-3	3-3	3-3
SCI 101, Gen. Science	3-4		
	18-25	17-25	17-24

	First Quarter	Second Quarter	Third Quarter
SOPHOMORE YEAR			
SHD 201, 202, Shorthand	2-4	2-4	
SHD 203, Dic. & Trans.			2-2
TYP 201, 202, Typewriting	2-5	2-5	
ACC 201, 202, 203, Accounting	3-4	3-4	3-4
BUS 201, 202, 203, Sec. Proc. & Fil.	3-3	3-3	3-3
BUS 201, Office Practice			5-6
SPE 205, Speech	4-4		
BSC 201, Bus. Com.		4-4	
ENG 201, 202, 203, English	3-3	3-3	3-3
PED 201, 202, 203, Phy. Ed.	1-2	1-2	1-2
	18-25	18-25	17-20

ELEMENTARY EDUCATION CURRICULUM

	First Quarter	Second Quarter	Third Quarter
FRESHMAN YEAR			
ENG 101, 102, 103, English	3	3	3
EDU 111, 112, Gen. Psy.	3	3	
EDU 101, Intro. to Ed.			3
HEA 101, Health	4		
HEA 103, Health			3
BIO 101, 102, 103, Biology	3	3	3
SSC 101, 102, 103, Soc. Science	3	3	3
PED 101, 102, 103, Phy. Ed.	1	1	1
ART 103, Art		4	
	17	17	17

	First Quarter	Second Quarter	Third Quarter
SOPHOMORE YEAR			
ENG 201, 202, 203, English	3	3	3
ART 201, Art	4		
MAT 101, 102, Mathematics		3	3
PSC 201, 202, 203, Phy. Science	3	3	3
SSC 201, 202, 203, Soc. Science	3	3	3
SPE 205, Speech			4
MUS 201, 202, 203, Music	2	4	3
PED 201, 202, 203, Phy. Ed.	1	1	1
	16	17	20

ENGLISH CURRICULUM

	First Quarter	Second Quarter	Third Quarter
FRESHMAN YEAR			
ENG 101, 102, 103, English	3-3	3-3	3-3
SCI 101, 102, 103, Biological Sci.	4-3	4-3	4-3
FRE 101, 102, 103, French	4-4	4-4	4-4
EDU 111, General Psychology	3-3		
SSC 101, 102, 103, Social Science			
or/SOC 121, 122, 123, Sociology	3-3	3-3	3-3
PED 101, 102, 103, Phy. Ed.	2-1	2-1	2-1
EDU 100, Orientation & Guid.	1-R		
MAT 101, 102, Basic Mathematics		3-3	3-3
	21-18	20-18	20-18

	First Quarter	Second Quarter	Third Quarter
SOPHOMORE YEAR			
ENG 201, 202, 203, English	3-3	3-3	3-3
FRE 201, 202, 203, French	3-3	3-3	3-3
SSC 201, 202, 203, Social Science	3-3	3-3	3-3
SCI 201, 202, 203, Phys. Science	4-3	4-3	4-3
HEA 101, Health	4-4		
PED 201, 202, 203, Phys. Ed.	2-1	2-1	2-1
ART 102, Intro. to the Arts & Crafts		3-2	
ART 103, Fine Art			4-4
ELE, Elective		3-3	
	22-19	21-18	18-17
May elect Hum. 211, 212, 213 or Journalism 206, 207, 208, in place of French 201, 202, 203.			

HEALTH & PHYSICAL EDUCATION CURRICULUM

	First Quarter	Second Quarter	Third Quarter
FRESHMAN YEAR			
ENG 101, 102, 103, English	3	3	3
BIO 101, 102, 103, Biology	3	3	3
EDU 111, 112, Gen. Psy.	3	3	
EDU 101, Intro. to Ed.			3
HEA 101, Health	4		
HEA 113, Health	3		

	First Quarter	Second Quarter	Third Quarter
HEA 103, Health			3
SSC 121, 122, 123, Sociology	3	3	3
PED 101, 102, 103, Phy. Ed.	1	1	1
MAT 101, 102, Mathematics		3	3
	20	16	19

SOPHOMORE YEAR	First Quarter	Second Quarter	Third Quarter
ENG 201, 202, 203, English	3	3	3
SCI 201, 202, 203, Phy. Science	3	3	3
ART 103, Art	4		
SSC 201, 202, 203, Soc. Science	3	3	3
HEA 221, 222, Health	3	3	
HEA 120, Health			3
PED 201, 202, 203, Phy. Ed.	1	1	1
Elective		3	3
SCI 213, Hum. Anat. & Phys.			4
	17	16	20

DEPARTMENT OF NATURAL SCIENCE AND MATHEMATICS

Since the social, economic and political demands of society are not static, the department is dedicated to relevant and influential education in the area of science and mathematics.

Realizing the need for improved educational opportunities in the service area of the institution, the necessity of utilizing and preserving human and natural resources, the importance of science and mathematics to daily living and their influence in a democratic society and the world, the department endeavors to provide a broad basic program in science and mathematics which is directed toward developing each student into a more intelligent and productive citizen.

To achieve this goal the department in its curriculum and teaching attempts to: (1) provide a general appreciation of the relevance of science and mathematics for personal achievement, self expression and satisfaction, and intelligent participation in a diversified society; (2) meet the needs of non-science and non-mathematics majors; (3) provide adequate preparation for science, mathematics, and associated majors who plan continued study in these fields; (4) assist in meeting the basic science and mathematics needs of the adult community.

CURRICULA FOR SCIENCE AND MATHEMATICS MAJORS MATHEMATICS

FRESHMAN YEAR	First Quarter	Second Quarter	Third Quarter
MAT 111, 112, 113, Mathematics	5	5	5
CHE 111, 112, 113, Chemistry	4	4	4

	First Quarter	Second Quarter	Third Quarter
ENG 101, 102, 103, English	3	3	3
HIS 201, 202, 203, History	3	3	3
FRE 101, 102, 103, French	3	3	3
PED 101, 102, 103, Phy. Ed.	1	1	1
	19	19	19

SOPHOMORE YEAR	First Quarter	Second Quarter	Third Quarter
MAT 211, 212, 213, Mathematics	5	5	5
BIO 101, 102, 103, Biology	3	3	3
ENG 201, 202, 203, English	3	3	3
FRE 201, 202, 203, French	3	3	3
PHY 211, 212, 213, Physics	4	4	4
	18	18	18

SCIENCE BIOLOGY

FRESHMAN YEAR	First Quarter	Second Quarter	Third Quarter
CHE 111, 112, 113, Chemistry	4	4	4
BIO 111, 112, 113, Zoology	4	4	4
ENG 101, 102, 103, English	3	3	3
MAT 111, 112, 113, Mathematics	5	5	5
FRE 101, 102, 103, French	3	3	3
	19	19	19

SOPHOMORE YEAR	First Quarter	Second Quarter	Third Quarter
CHE 211, 212, 213, Chemistry	5	5	5
BIO 211, 212, 213, Botany	4	4	4
HIS 201, 202, 203, History	3	3	3
ENG 201, 202, 203, English	3	3	3
FRE 201, 202, 203, French	3	3	3
PED 101, 102, 103, Phy. Ed.	1	1	1
	19	19	19

SCIENCE CHEMISTRY

FRESHMAN YEAR	First Quarter	Second Quarter	Third Quarter
CHE 111, 112, 113, Chemistry	4	4	4
BIO 111, 112, 113, Zoology	4	4	4
MAT 111, 112, 113, Mathematics	5	5	5
ENG 101, 102, 103, English	3	3	3
PED 101, 102, 103, Phy. Ed.	1	1	1
	17	17	17

SOPHOMORE YEAR	First Quarter	Second Quarter	Third Quarter
CHE 211, 212, 213, Chemistry	5	5	5
MAT 211, 212, 213, Mathematics	5	5	5
ENG 201, 202, 203, English	3	3	3
HIS 201, 202, 203, History	3	3	3
PHY 211, 212, 213, Physics	4	4	4
	20	20	20

SCIENCE PRE-NURSING

FRESHMAN YEAR	First Quarter	Second Quarter	Third Quarter
CHE 111, 112, 113, Chemistry	4	4	4
BIO 111, 112, 113, Zoology	4	4	4
ENG 101, 102, 103, English	3	3	3
*MAT 111, 112, 113, Mathematics	5	5	5
**Electives	3	3	3
	19	19	19

SOPHOMORE YEAR	First Quarter	Second Quarter	Third Quarter
BIO 211, 212, 213,			Elective
Microbiology	3	3	3
BIO 211, 212, 213, Anat. & Phy.	4	4	4
HIS 201, 202, 203, History	3	3	3
ENG 201, 202, 203, English	3	3	3
PED 101, 102, 103, Phy. Education	1	1	1
**Electives	4	4	4
May take MAT 101, 102, 103 before taking MAT 111.			
**Electives to be approved by faculty advisor.			

SCIENCE EDUCATION

FRESHMAN YEAR	First Quarter	Second Quarter	Third Quarter
CHE 111, 112, 113, Chemistry	4	4	4
BIO 111, 112, 113, Zoology	4	4	4
ENG 101, 102, 103, English	3	3	3
*MAT 111, 112, 113, Mathematics	5	5	5
HIS 201, 202, 203, History	3	3	3
	19	19	19

SOPHOMORE YEAR	First Quarter	Second Quarter	Third Quarter
PHY 211, 212, 213, Physics	4	4	4
BIO 211, 212, 213, Botany	4	4	4
ENG 201, 202, 203, English	3	3	3
**Electives	3	3	3
**Electives	4	4	4
May take MAT 101, 102, 103 before taking MAT 111.			

**Electives: Political Science, Physical Education, General Physiology, Personal Hygiene, Music Appreciation and Art Appreciation. Electives must be approved by faculty advisor.

CURRICULUM COURSE SEQUENCE FOR SOCIAL SCIENCE EDUCATION MAJORS

FRESHMAN YEAR	First Quarter	Second Quarter	Third Quarter
ENG 101, 102, 103, English	3	3	3
SOC 121, 122, 123, Sociology	3	3	3
BIO 101, 102, 103, Biology	3	3	3
MAT 101, 102, Mathematics	3	3	
ART 103, Art			4
PED 101, 102, 103, Phy. Ed.	1	1	1
EDU 111, 112, Gen. Psychology	3	3	
HEA 101, Health			4
ORI, Orientation	R		
	16	16	18

SOPHOMORE YEAR	First Quarter	Second Quarter	Third Quarter
ENG 201, 202, 203, English	3	3	3
PSC 201, 202, 203, Phy. Science	3	3	3
HIS 201, 202, 203, History	3	3	3
GEO 211, 212, 213, Geography	3	3	3
SSC Elective in Soc. Science	3	3	3
PED 201, 202, 203, Phy. Ed.	1	1	1
	16	16	16

CURRICULUM

Recommended Course sequence for those students who expect to transfer to a senior institution to specialize in one of the social science disciplines.

FRESHMAN YEAR	First Quarter	Second Quarter	Third Quarter
ENG 101, 102, 103, English	3	3	3
LAN 101, 102, 103, Foreign Language	4	4	4
GOV 131, 132, 133, American Government	3	3	3
MAT 101, 102, Mathematics	3	3	
PED 101, 102, 103, Phy. Ed.	1	1	1
BIO 101, 102, 103, Biology	3	3	3
HEA 101, Health			4
	17	17	18

SOPHOMORE YEAR	First Quarter	Second Quarter	Third Quarter
ENG 201, 202, 203, English	3	3	3
LAN 201, 202, 203, Foreign Language	3	3	3
HIS 201, 202, 203, World History	3	3	3
SSC Elective in Soc. Science	3	3	3
PED 201, 202, 203, Phy. Ed.	1	1	1
ART 103, Art			4
EDU 111, 112, Gen. Psychology	3	3	
	16	15	17

TEACHER AIDE PROGRAM CURRICULUM

FRESHMAN YEAR	First Quarter	Second Quarter	Third Quarter
ENG 101, 102, 103, English	3-3	3-3	3-3
EDU 101, 102, 103, Education	4-4	3-3	3-3
SSC 101, 102, Social Science	3-3	3-3	
MAT 101, Basic Math			4-4
HEA 101, 103, Health	4-4		4-3
ART 201, Art for Children		4-4	
ART 101, Art Fundamentals			3-2
PED 101, Phy. Education	2-1		
PED 203, Phy. Educ. Dancing			2-1
ENG 214, Children's Literature		4-4	
MAN 111, Manuscript Writing			2-1
TYP 101, 102, Typing	5-2	5-2	
	21-17	22-19	21-17

SOPHOMORE YEAR	First Quarter	Second Quarter	Third Quarter
EDU 211, 212, 213, Education	5-3	5-3	5-3
ENG 201, 202, English		3-3	3-3
ENG 211, English Literature	3-3		
SSC 201, 202, Social Science	3-3	3-3	
SCC 204, Science for Children		4-4	
PED 201, Phy. Education	2-1		
SCI 101, Gen. Science	6-4		
ART 102, Arts & Crafts		3-2	
MUS 213, Music for Children	4-4		
HEA 221, Health			3-3
	23-18	18-15	11-9

COAHOMA JUNIOR COLLEGE VOCATIONAL AND TECHNICAL EDUCATION

The Coahoma Junior College faculty believes that lifelong learning is one of the accepted func-

tions of the junior college and they consider Vocational and Technical Education a very important part of the college program. The college faces tremendous responsibility in the year ahead in training young people and adults who have been displaced by automation and technological changes. Whether these citizens are able to get a job will depend upon the skill and "know-how" obtained from their educational experiences.

The college seeks to provide a diversified program of vocational and technical education which will make it possible for people to have the opportunity to continue their education, and to realize their greatest potential. In addition to the skills and "know-how" for the job, the faculty believes that each student should secure instruction in the art of communication, in personal and community health, in American ideals and heritage and in the science of human behavior.

TWO-YEAR TERMINAL TECHNOLOGY CURRICULA

These programs may be selected by persons who seek to develop essential skills in the vocational technical areas of our industrial society. Even though the terminal curricula are not designed to lead to a bachelor's degree, the basic supporting courses are designed to carry college credit.

BUILDING CONSTRUCTION TECHNOLOGY

	First Quarter	Second Quarter	Third Quarter
FRESHMAN YEAR			
CON 101T, 102T, 103T, Gen. Construction	8-5	8-5	8-5
DRA 101T, 102T, 103T, Technical Drawing	5-3	5-3	5-3
SMT 101T, Structural Materials	2-2		
SDE 101T, Structural Design		3-3	
ENG 101, 102, English	3-3	3-3	
ENG 103T, Technical English			3-3
TMA 101T, 102T, 103T, Technical Math	5-5	5-5	5-5
EDU 100, Education	1-R		
BUS 101T, Intro. to Business			2-2
	24-18	24-19	23-18
SOPHOMORE YEAR			
TPH 201T, 202T, 203T, Tech. Physics	6-4	6-4	6-4
CON 201T, Mod. Construction	8-5		
ENG 205, English	2-2	2-2	
EDU 201T, Education	2-2		
PSY 201T, Industrial Psychology			4-4
CES 201T, Cost & Estimating	4-4		
ACN 202T, 203T, Advanced Construction		8-5	15-9
SUR 201T, Elem. Surveying		5-3	
CSP 201T, Con. & Specifications		3-3	
	22-17	24-17	25-17

DRAFTING & DESIGN TECHNOLOGY

	First Quarter	Second Quarter	Third Quarter
FRESHMAN YEAR			
ENG 101, 102, English	3-3	3-3	
ENG 103T, Tech. English			3-3
TMA 102T, 103T, Tech. Math.	5-5	5-5	
DRA 101T, Fundamentals of Draft.	8-5		
IOM 101T, Ind. Org. & Mang.	4-4		
EDU 100, Education	1-R		
DRA 102T, Machine Drafting		10-6	
SDE 101T, 102T, Structural Design		3-3	3-3
ART 101, Art		3-2	
GEO 103T, Descriptive Geometry			8-5
CSP 201T, Con. & Specifications			3-3
ECO 201, Economics			4-4
	22-17	24-19	21-18
SOPHOMORE YEAR			
DRA 201T, Piping Elec. & Sheet Metal Drafting	12-7½		
SUR 201T, Plane Surveying	5-3		
TPH 201T, 202T, 203T, Technical Physics	6-4	6-4	6-4
EDU 102, Education	2-2		
ENG 205, English	2-2	2-2	
DRA 202T, Architec. Drafting		12-7½	
PSY 201T, Industrial Psychology		4-4	
DRA 203T, Structural Drafting			12-7½
DRA 204T, Map and Topographical Drafting			10-6
	27-17½	24-17½	28-17½

ELECTRONICS TECHNOLOGY

	First Quarter	Second Quarter	Third Quarter
FRESHMAN YEAR			
ENG 101, 102, English	3-3	3-3	
ENG 103T, Tech. English			3-3
ELE 101T, 102T, Drafting for Elec.	4-2½	3-2	
BEL 101T, 102T, Basic Electricity	7-5	10-7	
TMA 102T, 103T, 104T, Tech. Math.	5-5	5-5	5-5
EDU 100, Education	1-R		
SPR 101T, Shop Process	3-11½		
ELE 103T, Electronics			8-5
IOM 101T, Ind. Org. & Mang.			4-4
	23-17	21-17	20-17
SOPHOMORE YEAR			
ENG 205, English	2-2	2-2	
TPH 201T, 202T, 203T, Technical Physics	6-4	6-4	6-4
ELE 201T, Electronics	11-8		
BEL 202T, 203T, Basic Electronics	8-5	6-4	
COM 204T, Computers		4-4	
IPS 201T, Industrial Psy.		4-4	
ELE 205T, Advanced Electronics			12-9
IEL 206T, Industrial Electronics			7-5
	25-18	22-18	25-18



DESCRIPTION OF COURSES ART

ART 101. (Fundamentals of Art): An introductory course which emphasizes initial experiences with basic elements and principles. The course stresses the importance of good design in its relationship to the arts. The students thereby receive instruction and guidance respectively in order to develop adequate foundations necessary for continued study in the field of art.

This course is designed specifically for art majors, but is also beneficial in the preparation of Drafting and Design students.

One quarter, six hours per week. Four quarter hours credit.

ART 102. (Arts and Crafts): A course in project-making with emphasis on the aesthetic awareness in creative construction.

The course is designed to acquaint the student with various media, techniques and methods of two and three dimensional and art creations which could be useful and decorative for the home and community.

Water color and tempera painting, block printing, metal jewelry, pottery, wood carving, plaster casting and paper mache are a few of the projects of this course.

This course is open, not only to art majors, where it is required, but also to students who are

energetic and like to develop skills useful for leisure art and crafts activities.

One quarter, six hours per week. Four quarter hours credit.

ART 103 (Art Appreciation): A general survey course designed to perpetuate cultural knowledge and appreciation of art as it is related to the works of the masters of Architecture, Painting, Sculpture and the Minor Arts.

The course has no prerequisite except a willingness on the part of the student to learn more about art and its influences through the ages. While this course is required by some major curriculum areas, it may be elected by all majors.

One quarter, four hours per week. Four quarter hours credit.

ART 201. (Art For Children): A course designed for those majoring in curricular study for elementary classroom instruction, with the idea in mind, that children learn and grow through art experience, the course has been so structured to include a wide variety of materials and techniques used in the art activities of children.

Some of these materials and experiences include crayon, clay modeling, tempera painting, various means of printmaking, three dimension construction, such as: box and paper sculpture, paper mache projects, plaster casting and weaving in basketry forms.

One quarter, six hours per week. Four quarter hours credit.

ART 211, 212 (Freehand Drawing): These courses are of foundation value toward expressive drawing. The courses include general to specific exercises in the following content: The study of perspective, one and two point, in its relationship to the basic shapes, still life, landscape, the human and animal figures and abstract design.

The media used in these courses of expressive drawing includes pencil, pastel, pen and ink, charcoal, crayon and water color.

Though much of our work is done from actual scenes, models and the like, many worthwhile lessons and valuable information is gained through a study of the Old Masters.

Freehand drawing is designed for those areas offering courses in graphic design. However, should there be students with noticeable skills in the graphic arts and are energetic and like to

develop their skills for leisure time, they may take these courses.

One quarter respectively, six hours per week. Three quarter hours credit.

DESCRIPTION OF COURSES

Business Education General Business Secretarial Science

ACCOUNTING PRINCIPLES 201, 202, 203

An introduction to the field of general accounting. This course deals with journalizing, posting, trial balances, classification of accounts, columnar records, control accounts, work sheets, financial statements and closing the books.

Four hours per week. Three quarters. Credit: 9 quarter hours.

BUSINESS COMMUNICATIONS 201

A course of instruction and exercise material to fit the student to speak and to write readily the clear, correct forceful English required in the translation of present-day business.

Four hours per week. One quarter. Credit: 4 quarter hours.

BUSINESS LAW 201

An introductory course designed to give basic legal principles of business law as related to everyday business. A study of laws dealing with contracts, negotiable instruments, property, business organizations, and business crimes.

Four hours per week. One quarter. Credit: 4 quarter hours.

DICTATION AND TRANSCRIPTION 203

Prerequisite: Shorthand 201, 202.

This course is designed to develop speed and accuracy in writing shorthand from dictation.

Four hours per week. One quarter. Credit: 2 quarter hours.

ECONOMICS 201, 202, 203

A study of the important aspects of controlling forces of our economic environment, including a brief survey of some of the major current economic problems.

Three hours per week. Three quarters. Credit 9 quarter hours.

INTRODUCTION TO BUSINESS 101

A survey of the field of business including a study of transportation, communication, banking and records. It also includes a study of the various forms of business organizations and how they are operated individually and collectively.

Four hours per week. One quarter. Credit: 4 quarter hours.

OFFICE MACHINES 201, 202

The purpose of this course is to teach the principles relative to the operation of the more important types of modern-day office machines. Practical assignments are given in which the calculators, adding machines, duplicators, dictating machines, and other equipment are used.

Three hours per week. Two quarters. Credit: 3 quarter hours each quarter.

SECRETARIAL PROCEDURES AND FILING 201, 202, 203

This course includes the study of office methods and practices, the preparation of business papers and reports, dictation and transcriptions, the use of various office machines, and a study of the filing systems with sufficient laboratory work to develop skill in the operation of the systems.

Three hours per week. Three quarters. Credit: 9 quarter hours.

SHORTHAND 101, 102, 103. Elementary

The theory, practices, and principles of Gregg Shorthand including shorthand penmanship, brief forms, supplementary reading, simple dictation, transcription, letter placement, and the techniques of typewriting.

Four hours per week. Three quarters. Credit: 6 quarter hours.

SHORTHAND 201, 202. Advanced

Review of shorthand principles, and intensive practice for speed and accuracy in taking dictation and transcribing. Speed requirements at the end of the course are 120 words per minute with a transcript rate of 35 words per minute.

Four hours per week. Two quarters. Credit: 4 quarter hours.

TYPEWRITING 101, 102, 103. Elementary

Detailed study designed to train beginners in correct habits of touch typewriting. It familiarizes them with the mechanism and care of typewriters,

keyboard techniques, and drills to gain speed and accuracy in business correspondence.

Five hours per week. Three quarters. Credit: 6 quarter hours.

TYPEWRITING 201, 202, 203. Advanced

Develop speed and accuracy in typing. It includes a study of tabulation, composition, business forms, legal documents, contracts, and duplication.

Five hours per week. Three quarters. Credit: 6 quarter hours.

EDUCATION

EDUCATION 101, 102, INTRODUCTION TO EDUCATION

The historical, sociological, philosophical and economic basis of the educational system are studied by students enrolled in the introductory education course. Beyond this the course imparts to students an understanding of the value of education, both formal and informal. The course also provides experiences whereby the student may observe and participate in the classroom thus gaining a first hand knowledge of the learning situation.

Two quarters. Credit: 3 hours per quarter.

EDUCATION 111, 112, GENERAL PSYCHOLOGY

This course lays the basic foundation for more advanced courses in psychology and other courses in the behavioral sciences. Special emphasis is given to the biological and cultural basis for behavioral development, and personal and interpersonal adjustment.

Two quarters. Credit: 3 hours per quarter.

EDUCATION 202, 203, THE PSYCHOLOGY OF HUMAN GROWTH AND DEVELOPMENT

This course introduces the student to the major ideas and subjects included in the study of the psychology of human growth and development.

Some of the subjects covered are perception, motivation, feelings and emotions, the social-cultural basis behavior, physical growth and development, the development of mental ability and communication, peer and child-family relationships, personality, and the psychology of teacher-pupil relationships.

Two quarters. Credit: 3 hours per quarter.

EDUCATION 212, 213, PSYCHOLOGY OF THE ADOLESCENT

Prerequisite: General Psychology 111: This course is an examination of that period of human development from puberty to adulthood. Stress is on the impact of culture and of individual physiological maturation, as these affect the individual's adjustment—mentally, physically, socially, and emotionally.

Two quarters. Credit: 3 hours per quarter.

MUSIC

MUSIC 201, RUDIMENTS OF MUSIC

A study of the basic fundamentals of music. Required for elementary education majors and prospective music majors **only**.

Meets four days per week. Credit: 2 quarter hours.

MUSIC 202, MUSIC FOR CHILDREN

Prerequisite: Music 201: A study of the presentation of music in grade schools. Required for elementary education majors and prospective music majors **only**.

Meets four days per week. Credit: 4 quarter hours.

MUSIC 203, MUSIC APPRECIATION

A study of master composers and their works and the twentieth century music. Required for elementary education majors and open to all students as an elective.

Meets three days per week. Credit: 3 quarter hours.

ENGLISH

ENGLISH 100, REMEDIAL

English workshop for students who show a deficiency in the fundamentals of grammar, comprehension, writing skills and composition.

First quarter, Freshman year. No credit.

ENGLISH 101, 102, 103, ORAL AND WRITTEN EXPRESSION

A review of the fundamentals of grammar and spelling, sentence structure and punctuation; theme writing with special emphasis on paragraph writing, dictionary study and vocabulary building. Special emphasis is placed on the expository theme, research paper and on oral expression.

Three quarters, three hours per week. Three quarter hours credit per quarter.

ENGLISH 201, 202, 203, WORLD LITERATURE

The study of World Literature will seek to show that literature is the expression of great tempers (moods) which have dictated the artistic expression of mankind. The tempers supply the basic approach to literature used in this study. "The Temper of Classicism," which is characterized by restraint, decorum and intelligence. "The Temper of Romanticism," which is largely made up of exuberance, enthusiasm and emotions and "The Temper of Realism," which is distinguished by facts, science and an objective reporting of life.

The work of the first quarter will deal with "The Temper of Classicism," the second quarter will deal with "The Temper of Romanticism," and the third quarter will deal with "The Temper of Realism."

The procedure involves lecture, oral readings, book readings, book reviews, creative writings, and individual research. Auditory and visual aids are employed.

Three quarters, three hours per week. Credit: Three quarter hours each quarter.

ENGLISH 204, FUNDAMENTALS OF SPEECH

This course is offered as the first step in specialized training in speech. It deals with such fundamental concepts as: the mechanics of speaking, the social function of speech, principles of oral communication, organization, composition and theory and practice of voice usage as it relates to effective speech and techniques of delivery.

This is a General Education course. It may be offered as an elective for all students, or required of Education, English and Speech majors.

One quarter. Four hours per week. Credit: Four quarter hours.

ENGLISH 205, PUBLIC SPEAKING

This course is designed to give the student practical knowledge in the theory and practice of speech in everyday life. The fundamental principles of oral communication, pronunciation, distinct articulation, voice control, and speech construction and organization are discussed and put into practice. Wire recordings of the practice speeches give the student an opportunity for self-analysis of his speech needs and abilities. Above all, the student is given an opportunity to develop poise, self-confidence and personality.

Four times per week. Four quarter hours credit.

FRENCH

FRENCH 101, 102, 103, Elementary

This course is designed to give the student the fundamentals of the language through basic grammar, correct pronunciation of a basic vocabulary, and sentence structure.

FRENCH 102, 103 is a continuation of the previous course with selected reading materials as well as dictation and additional vocabulary for conversation.

Four hours per week. Credit: Four quarter hours per quarter.

FRENCH 201, 202, 203, Intermediate/Prerequisite, French 103.

The literature of France is stressed through selected classics. Translations are required thus giving the student an appreciation of French authors and their works. Poems and portions of plays are read and discussed. It is to be expected that the student has built up a large vocabulary to read, discuss and enjoy some of the works of Corneille, Racine and Moliere in drama form and the poems of modern and romantic writers.

Three hours per week. Credit: Three quarter hours per quarter.

Description of Courses

JOURNALISM 206, 207, 208, PRINCIPLES OF JOURNALISM

The purpose of this course is to prepare students to write and produce better school publications by teaching the fundamentals of good journalistic practices. Special training is given in writing news articles, editorials, and feature articles; in proof-reading and making up a newspaper.

Three quarters. Four hours per week. Credit: 3 hours per quarter.

HUMANITIES 211, 212, 213

Humanities deals with interrelated disciplines emphasizing the refinement of man's culture. The areas of interest include: Art, History, Literature, Music and Philosophy.

Three quarters. Three hours per week. Credit: 3 hours per quarter.

HEALTH AND PHYSICAL EDUCATION

HEALTH 101, PERSONAL AND COMMUNITY HEALTH

The aims of this course are to (1) improve the individual habits and attitudes of the student, (2)

to have student perform duties related to maintenance of health (3) to prevent disease by acquainting the student with the importance of sanitation, e.g., milk control, water supply, sewerage and garbage disposal, insect and rat control and industrial hygiene. Mental health, healthful family relations and child care are emphasized. Health organizations (official and non-official) and the role they play in improving the health of the community are given special attention.

One quarter. Four hours per week. Four quarter hours credit.

HEALTH 103, MARITAL RELATIONS AND FAMILY PLANNING

This course is designed to deal with inter-relationships between male and female and family planning.

One quarter. 3 hours per week. 3 quarter hours.

PHYSICAL EDUCATION 101, 102, 103, FUNDAMENTALS OF RECREATION

Stresses fundamental skill in organized games, play, and other recreational activities that lead to physical fitness, social improvement, and development of moral character. Lectures, demonstration, and field work.

Freshman year. One hour credit each quarter. Two days per week.

HEALTH 113, INTRODUCTION TO PHYSICAL EDUCATION

The aim of this course is to study the origin, the basic skills, the rules and regulations, and the famous contributions made by many authorities in the field of Health and Physical Education and recreation.

One quarter. Three hours per week. Three quarter hours credit.

HEALTH 120, PASTTIME SPORTS

This course is designed to introduce the student to a wide variety of sports and physical education skills. It also teaches a brief history of sports and how to select and care for equipment. A digest of basic rules, fundamentals, techniques, strategy, safety precaution, and terminology for various sports activities.

One quarter. Three hours per week. Three quarter hours credit.

HEALTH 221, SAFETY AND FIRST AID

The course is designed to acquaint the student with safety procedures in preventing common ac-

cidents in the home, on the farm, on the highways, in industry, on the athletic field and playground. Major consideration is given to demonstration and practice of general first-aid care with specific stress placed on bandaging, the controlling of bleeding, administering artificial respiration, and the treatment of strains, bruises, wounds, sprains, and shock.

Three hours per week. Three quarter hours credit.

HEALTH 222, MENTAL HYGIENE

This course is designed to give the student a concept of the importance of mental hygiene to daily living. Emphasis is placed upon examining and interpreting procedures for protecting and preserving the mental health of the individual through wholesome adjustment to the environment. Lectures, discussions, and review of case studies concerning the nature, causes, and treatment of pathological behavior. Observation trips shall be made to institutions for the care and treatment of mental patients.

Three hours per week. Three quarter hours credit.

PHYSICAL EDUCATION 201, 202, RECREATIONAL LEADERSHIP

Methods of teaching recreation at various grade levels, organization and promotion of recreational programs, athletic games and other activities related to the school. Consideration is also given play areas, equipment and supplies necessary for a well-rounded program in rural and urban schools. Lectures and field work.

First and second quarters, Sophomore year. One hour credit each quarter. Two days per week.

PHYSICAL EDUCATION 203, FOLK DANCING

This class has a two-fold purpose: first, to offer the student a chance to enjoy the thrills derived from dancing and, second, to give the students an appreciation of the cultures of peoples through their dance.

Third quarter, Sophomore year. One hour credit. Two days per week.

Description of Courses

MATHEMATICS

MAT 100, SLIDE RULE

Prerequisite: None. Use of the slide rule. Speed and accuracy is stressed. One lecture hour per week. Two laboratory hours per week. No credit.

MAT 101, MODERN BASIC MATHEMATICS

Prerequisite: None. Topics to be considered; set, numeration systems, mathematical systems. Three lecture hours per week. Three quarter hours credit.

MAT 102, MODERN BASIC MATHEMATICS

Prerequisite: Math 101. Topics to be considered are whole numbers, integers, rational numbers. Three lecture hours per week. Three quarter hours credit.

MAT 103, MODERN BASIC MATHEMATICS

Prerequisite: Math 102. Introduction to algebra, geometry and probability. Three lecture hours per week. Three quarter hours credit.

MAT 111, COLLEGE ALGEBRA AND TRIGONOMETRY

Prerequisite: Two units of high school algebra and one unit of trigonometry or by consent of the instructor. Recitations and lectures will include review of basic topics in algebra, sets, linear equations, inequalities in one variable. Five lecture hours per week. Five quarter hours credit.

MAT 112, COLLEGE ALGEBRA AND TRIGONOMETRY

Prerequisite: Math 111. Basic topics are functions and linear statements in two variables, quadratic equations and functions in one variable, determinants and systems of linear equations, sequences and series. Five lecture hours per week. Five quarter hours credit.

MAT 113, COLLEGE ALGEBRA AND TRIGONOMETRY

Prerequisite: Math 112. Topics to be considered are trigonometric functions of angles, exponents and logarithms, analytic trigonometry, complex numbers and selected topics in theory of equations. Five lecture hours per week. Five quarter hours credit.

MAT 222, ANALYTIC GEOMETRY AND CALCULUS

Prerequisite: Math 113. This course emphasizes real numbers and functions, analytic geometry of lines and circles, limits and derivatives, continuity, maxima and minima. Five lecture hours per week. Five quarter hours credit.

MAT 223, ANALYTIC GEOMETRY AND CALCULUS

Prerequisite: Math 222. A continuation of Math 222, which includes L' Hospital's rule, mean value theorem, indefinite integral, fundamental theorems, differentiation and integration techniques. Five lecture hours per week. Five quarter hours credit.

MAT 224, ANALYTIC GEOMETRY AND CALCULUS

Prerequisite: Math 223. This course is a continuation of Math 223, covering transcendental functions, parametric equations and arc length, and polar coordinates. Five lecture hours per week. Five quarter hours credit.

SCIENCE (Biological)

SCI 101, GENERAL SCIENCE

Prerequisite: None. Designed primarily for vocational business majors. Emphasis is placed on the history of science, metric system, and selected principles from biology, chemistry and physics. Two lecture hours per week. Two laboratory hours per week. Three quarter hours credit.

BIO 101, GENERAL BIOLOGY

Prerequisite: None. A course in general biology with emphasis on the use of audio-visual equipment, metric system, history of biology and chemical basis of life. Designed for non-science majors. Two lecture hours per week. Two laboratory hours per week. Three quarter hours credit.

BIO 102, GENERAL BIOLOGY

Prerequisite: Bio 101. This is a continuation of Bio 101, which includes cells to organisms, energy transformation, origin and diversity of life. Designed for non-science majors. Two lecture hours per week. Two laboratory hours per week. Three quarter hours credit.

BIO 103, GENERAL BIOLOGY

Prerequisite: Bio 102. A continuation of Bio 102, covering functions at the organism level, inheritance, population and communities. Designed for non-science majors. Two lecture hours per week. Two laboratory hours per week. Three quarter hours credit.

BIO 111, GENERAL ZOOLOGY

Prerequisite: One unit of high school biology. This is a course in general zoology which includes the history of zoology, levels of organization with

emphasis on the biochemical, cellular and tissue levels. Two lecture hours per week Three laboratory hours per week. Four quarter hours credit.

BIO 112, GENERAL ZOOLOGY

Prerequisite: Bio 111. A continuation of Bio 111, including a survey of invertebrate phyla, vertebrate classes, human biology. Two lecture hours per week. Three laboratory hours per week. Four quarter hours credit.

BIO 113, GENERAL ZOOLOGY

Prerequisite: Bio 112. This course is a continuation of Bio 112, which emphasizes developmental biology, genetics, ecology and conservation. Two lecture hours per week. Three laboratory hours per week. Four quarter hours credit.

BIO 211, GENERAL BOTANY

Prerequisite: None. This is a course in general botany with emphasis on structural details of vegetative and reproductive cells, cytoplasmic differentiation, mitosis, meiosis, chromosomal aberrations. Development and structure of roots, stems, and leaves of vascular plants. Two lecture hours per week. Three laboratory hours per week. Four quarter hours credit.

BIO 212, GENERAL BOTANY

Prerequisite: Bio 211. A continuation of Bio 211 which includes developmental morphology of the plant embryo, gametogenesis, fertilization, embryony, endosperm formation, apomixis. Plant behavior in relation to environment developmental variations, successional trends, stabilization of plant communities. Two lecture hours per week. Three laboratory hours per week. Four quarter hours credit.

BIO 213, GENERAL BOTANY

Prerequisite: Bio 212. A continuation of Bio 212 with emphasis on representative groups in the plant kingdom, economic importance, phylogeny, classification and nomenclature of seed plants, introductory methods of collection, laboratory studies of representative plant families. Two lecture hours per week. Three laboratory hours per week. Four quarter hours credit.

BIO 211, MICROBIOLOGY

Prerequisite: Bio 103 or 113. A survey of the microbes (microscopic organisms) of both plant and animal kingdoms, with emphasis and detailed study being placed on those affecting other forms

of life, especially man. Laboratory work is devoted to basic techniques of microbial study, such as culturing, identifying, control, anatomy and life cycles. Two lecture hours per week. Two laboratory hours per week. Three quarter hours credit.

BIO 212, MICROBIOLOGY

A continuation of Bio 211. Two lecture hours per week. Two laboratory hours per week. Three quarter hours credit.

BIO 221, HUMAN ANATOMY AND PHYSIOLOGY

Prerequisite: Bio 103 or 113. A study is made of the anatomy and physiology of the human body as an integrated whole with more detailed study of the skeletal and muscular systems. Two lecture hours per week. Three laboratory hours per week. Four quarter hours credit.

BIO 222, HUMAN ANATOMY AND PHYSIOLOGY

Prerequisite: Bio 221. A continuation of Bio 221 in which the nervous, circulatory, respiratory and digestive systems are emphasized. Two lecture hours per week. Three laboratory hours per week. Four quarter hours credit.

BIO 223, HUMAN ANATOMY AND PHYSIOLOGY

Prerequisite: Bio 222. This course is a continuation of Bio 221. Emphasis is placed on the urinary, reproductive, endocrine systems. Two lecture hours per week. Three laboratory hours per week. Four quarter hours credit.

SCIENCE (Physical)

PSI 201, PHYSICAL SCIENCE

Prerequisite: None. This course is designed for non-science majors. Emphasis is placed on fundamental principles of physics. Topics treated are: motion, fluids and waves, electricity and current, magnetic fields, and kinetic theory. Two lecture hours per week. Two laboratory hours per week. Three quarter hours credit.

PSI 202, PHYSICAL SCIENCE

Prerequisite: Physical Science 201 or consent of instructor. This is a continuation of 201 and an introduction to chemistry. Emphasis is placed on selected fundamental principles of chemistry. Topics in chemistry to be treated are: structure and principles of matter and chemical reactions.

Two lecture hours per week. Two laboratory hours per week. Three quarter hours credit.

PSI 203, PHYSICAL SCIENCE

Prerequisite: None. Emphasis is on selected fundamental principles of astronomy and earth science. Topics to be treated are: earth's material, atmosphere and hydrosphere, history of the earth, the sun and its family, the stars, our galaxy, and revolution of the universe. Two lecture hours per week. Two laboratory hours per week. Three quarter hours credit.

CHE 111, GENERAL CHEMISTRY

Prerequisite: None. A general study of fundamental concepts and theories of chemistry with emphasis on a brief review of basic chemistry, chemical formulas and equations, physical behavior of gases, structure of atoms, chemical bonding, liquids and solids. Two lecture hours per week. Three laboratory hours per week. Four quarter hours credit.

CHE 112, GENERAL CHEMISTRY

Prerequisite: Che 111. A continuation of Che 111. Emphasis is placed on solution, equilibrium in chemical systems, reactions of elements, precipitation reactions, and acid-base reactions. Two lecture hours per week. Three laboratory hours per week. Four quarter hours credit.

CHE 113, GENERAL CHEMISTRY

Prerequisite: Che 112. A continuation of Che 112, with emphasis on electrolytic cells, voltaic cells, nuclear reactions, and introduction to organic chemistry. Two lecture hours per week. Three laboratory hours per week. Four quarter hours credit.

CHE 211, ORGANIC CHEMISTRY

Prerequisite: Che 113. An introduction to the chemistry of carbon compounds. This course includes the study of the classification nomenclature reaction's and synthesis of aliphatic and aromatic compounds. Three lecture hours per week. Three laboratory hours per week. Five quarter hours credit.

CHE 212, ORGANIC CHEMISTRY

Prerequisite: Che 211. A continuation of Che 211, with special attention given to amines, cyanogen compounds, polyhydric alcohol, carbohydrates and other derivatives. Three lecture hours per week. Three laboratory hours per week. Five quarter hours credit.

CHE 213, ORGANIC CHEMISTRY

Prerequisite: Che 212. A continuation of Che 212 with emphasis on the cyclic compounds. The use and interpretation of NMR and IR spectra, stereochemistry mechanisms and the application to organic chemistry are included in all three quarters where applicable. Three lecture hours per week. Three laboratory hours per week. Five quarter hours credit.

PHY 211, GENERAL PHYSICS

Prerequisite: Mat 113. This course is intended primarily for physics, chemistry and mathematics majors. Emphasis is placed on mechanics and heat. Three lecture hours per week. Two laboratory hours per week. Four quarter hours credit.

PHY 212, GENERAL PHYSICS

A continuation of Phy 211, with emphasis on sound and light. Three lecture hours per week. Two laboratory hours per week. Four quarter hours credit.

PHY 213, GENERAL PHYSICS

This course is a continuation of Phy 212, which emphasizes magnetism, electricity, and radiation. Three lecture hours per week. Two laboratory hours per week. Four quarter hours credit.

DESCRIPTION OF SOCIAL SCIENCE COURSES

SOCIAL SCIENCE 101, 102, 103 (Introduction to Social Science)

Orientation course or freshmen which aims to give the student a background of the forces which shape man's social life and basic concepts with their historical backgrounds.

Three quarters. Three hours per week. Three quarter hours credit each quarter.

ECONOMICS 111, 112, 113 (Economic Principles)

Principles and problems associated with the production, exchange and use of wealth.

Three quarters. Three hours per week. Three quarter hours credit each quarter.

SOCIOLOGY 121, 122, 123 (Introduction to Sociology)

This series of courses is focused upon the relationship of people to their physical and a cultural surroundings to each other. A systematic conceptual framework developed that will permit the student to view the social world and its major problems.

Three quarters. Three hours per week. Three quarter hours credit each quarter.

POLITICAL SCIENCE 131, 132, 133 (American Government: National, State and Local) 131, 132 National

A study of the American constitution and its development, the organization and machinery of the national government, political parties and the electoral process; and the relationship of the individual to the federal government. 133 State and Local: An analysis of the state and local government organization and political practices in America. Illustrative material is drawn largely from Mississippi.

Three quarters. Three hours per week. Three quarter hours credit each quarter.

HISTORY 141, 142, 143 (Black History)

A study of the contribution of the black man to America's life.

Three quarters. Three hours per week. Three quarter hours credit each quarter.

HISTORY 201, 202, 203 (World Civilization)

A general survey course of the development of civilization from earliest time to the present.

Three quarters. Three hours per week. Three quarter hours credit each quarter.

HISTORY 221, 222, 223 (United States History)

A survey course in the history of the United States. The first quarter, 221, covers the period from the Colonial beginnings to the end of the Jacksonian Era. The quarter, 222, continues through the Civil War and Reconstruction and to the return to home rule in the South. The third quarter continues to the present. Social Science majors; elective for others.

Three quarters. Three hours per week. Three quarter hours credit each quarter.

GEOGRAPHY 211, 212, 213 (World Geography)

The course involves a detailed study of the major geographical regions of the world. Special consideration is given to the topographical features, economic activities, climatical conditions, and the sociocultural attributes of the peoples of the various geographical regions. An essential aspect of the course is that of reading and interpreting a variety of maps, graphs, and charts.

Three quarters. Three hours per week. Three quarter hours credit each quarter.

COURSE DESCRIPTIONS

Special Courses for Teacher Aide Program

MANUSCRIPT WRITING 111

Students will seek to improve their cursive and manuscript writing; their speed and legibility. They will explore children's writing books and read the literature on handwriting and apply principles of teaching writing to themselves and the children.

2 hours per week. One quarter hour credit.

CHILDREN'S LITERATURE 214

This course is designed to further acquaint students of Early Childhood Education with Children's Literature. They will read and tell stories to children. Films of children's stories will be observed, evaluated, and suggested lesson plans worked out for use in the local Head Start Centers.

4 hours per week. 4 quarter hours credit.

SCIENCE FOR CHILDREN 204

This course will familiarize students with the science interest of children and will enable them to answer children's questions about their environment. They will take field trips, excursion, conduct science experiments, use science laboratory equipment, audio-visual aids, make collections of science specimens, plan possible science lessons and experiments for kindergarten children.

4 hours per week. 4 quarter hours credit.

MUSIC FOR CHILDREN 213

Study of the objectives and music materials for kindergarten children and the development of rhythmic expression. Aides will learn to sing children's songs, play instruments in rhythm band and make instruments from by-products.

4 hours per week. 4 quarter hours credit.

EDUCATION 211, LANGUAGE ARTS PRACTICUM IN CHILD DEVELOPMENT

This course consists of a critical analysis of the materials, methods, and laboratory equipment used in stimulating readiness in the language Arts. Emphasis will be placed on the proper socialization of the children in the classroom. The course will include observation, experiences in oral English and lesson planning.

5 hours per week. 3 quarter hours credit.

EDUCATION 212, 213

These courses continue the work begun in Education 211; making application in other areas of

learning. This will include social studies of local community, arithmetic as used on kindergarten level, enrichment of child's experiences through local trips, films and discussions.

5 hours per week. 3 quarter hours credit each quarter.

VOCATIONAL TECHNICAL EDUCATION

COURSE DESCRIPTION

TECHNICAL MATHEMATICS 101T

This course provides students with a study of principles of mathematics applicable to problems encountered in the field of technology. A review of Algebra, Geometry and the fundamental concepts of Trigonometry. It is a general Mathematics course designed for technical students.

Five hours per week. Five quarter hours credit.

TECHNICAL MATHEMATICS 102T (Algebra)

A review of the fundamentals of High School Algebra, the number system, simple and quadratic equations, logarithms, progression, determininants, binominal theorem and the theory of equations.

Five hours per week. Five quarter hours credit.

TECHNICAL MATHEMATICS 103T (Trigonometry)

This course consists of the function of angles as well as their applications to right and oblique triangles, polar and parametric equations. Prerequisite: Technical Math. 102T.

Five hours per week. Five quarter hours credit.

TECHNICAL MATHEMATICS 104T (Analytical Geometry)

This course includes elementary topics in Analytical Geometry at the beginning, and progresses through more complex topics including introduction to solid Analytical Geometry.

Five hours per week. Five quarter hours credit.

DESCRIPTIVE GEOMETRY 103T

A course designed to develop the proper concepts and abilities with respect to points, lines, planes, and surfaces as they are related to the field of drafting.

Two hours lecture and six hours laboratory per week. Five quarters hours credit.

TECHNICAL DRAWING 101T

An introductory course covering the fundamental principles of drawing, use of instruments, lettering, geometry construction, orthographic pro-

jection, auxiliary views, dimensioning and drawing conventions.

One hour lecture and four hours laboratory per week. Three quarter hours credit.

TECHNICAL DRAWING 102T

A study of advanced problems in orthographic projection, geometric construction, technical sketching and dimensioning, functional value of various phases of industrial usage is stressed.

One hour lecture and four hours laboratory per week. Three quarter hours credit.

TECHNICAL DRAWING 103T

A continuation of Technical Drawing 102T. Emphasis is placed on detailed and assembly drawings and practical application of drafting principles. A complete set of plans and specifications are required.

One hours lecture and four hours laboratory per week. Three quarter hours credit.

STRUCTURAL DESIGN 101T

The study of steel and timber design, columns, trusses, connections, structural frameworks, and the common practice in the anlysis and designs of foundations.

Three hours per week. Three quarter hours credit.

STRUCTURAL DESIGN 102T

A continuation of Structural Design 101T. It includes problems of a more advanced nature and the contemporary techniques of structures.

Three hours per week. Three quarter hours credit

TECHNICAL PHYSICS 201T, 202T, & 203T

These Physics courses emphasize the essential material of general physics. The subject matter includes the properties of matter and sound, heat, dynamics, electricity, magnetism, radio activity, and light. The courses are planned for the technical students.

Two hours lecture and four hours laboratory per week. Four quarter hours credit each quarter.

PLANE SURVEYING 201T

This is a study of the fundamentals of plane surveying. Care and use of instruments and equipment, principles and practices in running lines, establishing grade, and differential leveling, field notes and office computations.

One hour lecture and four hours laboratory per week. Three quarter hours credit.

COST AND ESTIMATING 201T

A study of elements of cost in construction, analysis of procedures in recording quantity take-off, labor factor and overhead, investigation and tabulation of representative cost data for building construction.

Five hours per week. Four quarter hours credit.

CONTRACTS AND SPECIFICATIONS 201T

The course is designed to enable the students to prepare estimates and specifications for building construction. Instruction is given in taking off quantities from plans and specification to determine material and labor cost. Training is given in the use of catalogs, check lists, cost records, price lists, and estimating forms. The relationship between plans, specifications, codes and contracts are considered. Each student prepares a set of specifications and contracts and makes a complete estimate of a building project.

Three hours per week. Three quarter hours credit.

PIPING, ELECTRICAL AND SHEET METAL DRAFTING 103T

Advanced knowledge and techniques in planning plumbing. Electrical mechanical objects, the effective use of codes, handbooks and other references used in contemporary drafting.

Three hours lecture and nine hours laboratory. Seven and one half quarter hours credit.

STRUCTURAL MATERIALS 101T

A course designed to familiarize the student with the physical properties of the materials generally used in the erection of structures with brief descriptions of their manufacture.

Two hours per week. Two quarter hours credit.

GENERAL CONSTRUCTION 101T

This course emphasizes materials, tools, and methods used in wood and masonry structures, physical characteristics of woods, and wood preservation, use and care of hand and power tools.

Two hours lecture and six hours laboratory per week. Five quarter hours credit.

GENERAL CONSTRUCTION 102T

A continuation of General Construction 101T. Layout and forming of light structures using mandatory and recommended building codes and specifications.

Two hours lecture and six hours laboratory per week. Five quarter hours credit.

GENERAL CONSTRUCTION 103T

A continuation of 102T. Principles of the steel square, characteristic of materials for interior and exterior trim, roof construction, etc.

Two hours lecture and six hours laboratory per week. Five quarter hours credit.

ELEMENTARY SURVEYING 201T

The care and use of surveying instruments, problems include the measurement of distance, the use of compass, sextant, transit traverse differential leveling and basic mapping.

One hour lecture and four hours laboratory per week. Three quarter hours credit.

EDUCATION 201T (Human Growth and Development)

The course is based primarily upon educational socio-psychological principles, and it is designed to help the individual better understand his personal growth both psychologically and sociologically. Human nature, feelings and emotions, social interaction, frustration, interpersonal relations in business and society are given special attention.

Three hours per week. Three quarter hours credit.

INTRODUCTION TO BUSINESS 101T

This is a basic course which acquaints the students with functions performed by business and the part business activities play in our complex economy as a whole. Attention is given to routine business practice and the terminology in the effective organization and management of small business enterprises.

Three hours per week. Three quarter hours credit.

TECHNICAL COMMUNICATION 103T

A course in the principles and mechanics of communication applicable to the field of technology. It stresses letter writing, report writing, terminology, and style used in the several types of communication related to this field.

Three hours per week. Three quarter hours credit.

FUNDAMENTAL OF DRAFTING 201T

This is a basic course to all drafting. It considers the proper care of instruments, lettering and the formation of good drafting habits.

Two hours lecture and six hours laboratory per week. Five quarter hours credit.

MACHINE DRAFTING 102T

The presentation of nuts, bolts, screws and rivets; and other machine shop procedures, methods and techniques in working drawings.

Two hours lecture and eight hours laboratory per week. Six quarter hours credit.

ARCHITECTURAL DRAFTING 202T

Presentation and application of standard construction, working drawings and the production of prints. Designed to prepare students for architectural office work and the work of junior draftsmen.

Three hours lecture and nine hours laboratory per week. Seven and one half quarter hours credit.

STRUCTURAL DRAFTING 203T

This course gives a basic understanding of structural sections, terms, conventional abbreviations, and symbols used in structural fabrication and erection. It also includes an understanding of the tables of squares, logarithms, trigonometric functions, and A.I.S.C. Handbook. Problems involving beams, columns, trusses, and braces are all important segments of the course.

Three hours lecture and nine hours laboratory per week. Seven and one half quarter hours credit.

MAP AND TOPOGRAPHICAL DRAFTING 204T

Drafting techniques as applied to map making, transverses, plot plans, plan and profile drawings, making use of maps, field survey data, aerial photographs, and related reference materials. Including symbols, notations and other standardized code materials.

Two hours lecture and eight hours laboratory per week. Six quarter hours credit.

DRAFTING FOR ELECTRONICS 101T

This course includes a working knowledge of electrical symbols, connectors and circuits schematics, simple mechanical drawings, and lettering.

One hour lecture and three hours laboratory per week. Two and one half quarter hours credit.

DRAFTING FOR ELECTRONICS 102T

A continuation of Drafting for Electronics 101T. More advanced projects are introduced and a higher degree of accuracy is emphasized.

One hour lecture and two hours laboratory per week. Two quarter hours credit.

BASIC ELECTRICITY 101T (Direct Current)

A study of basic electrical concepts as it relates to the fundamentals of electronics.

Three hours lecture and four hours laboratory per week. Five quarter hours credit.

BASIC ELECTRICITY 102T (Alternating Current)

An examination of alternating current fundamentals and theory in terms of single and poly-phase circuits; properties of resistance, inductance. Capacitance independence and the basic characteristic.

Four hours lecture and six hours laboratory per week. Seven quarter hours credit.

BASIC ELECTRONICS 202 & 203T (Circuits)

This study of radio circuits and systems, basic oscillator circuits, R.F. amplifiers, radio transmitters, detection and reception of radio waves, and the principles of single-sideband communication.

Two hours lecture and six hours laboratory per week. Five quarter hours credit for 202T. Two hours lecture and four hours laboratory per week. Four quarter hours credit for 203T.

ELECTRONICS 201T (Transistors)

The course is designed to examine the basic types of transistors and their reaction to changes in loads, temperature, and their use in basic circuitry.

Five hours lecture and six laboratory hours per week. Eight quarter hours credit.

ADVANCED ELECTRONICS 205T (Circuit Analysis)

The analysis of more complex electronics circuits of communications, equipment, radar, telemetry and microwaves, together with theory and applications in multivibrators, sawtooth generators, blocking oscillators, and special types of power supplies.

Six hours lecture and six hours laboratory per week. Nine quarter hours credit.

INDUSTRIAL ELECTRONICS 206T

This course includes the study of fundamental devices and circuits applicable to industrial electronics; such as, gas tubes, silicon-controlled rectifiers, photo-electronic devices, industrial timers and general industrial applications.

Three hours lecture and four hours laboratory per week. Five quarter hours credit.

ELECTRONICS 103T (Vacuum Tubes)

The study of the characteristics of vacuum tubes, an examination of elementary circuits which contains these components.

Two hours lecture and six hours laboratory per week. Five quarter hours credit.

COMPUTERS 204T

This course is designed to introduce the student to the major types of computers, numbering and logic system, and Boolean Algebra; with emphasis on switching theory and digital computers.

Four hours lecture per week. Four quarter hours credit.

SHOP PROCESSES 101T

This course is designed to develop the students' efficiency in the use of hand tools, equipment and other materials needed as a technician.

Three hours laboratory per week. One and one half quarter hours credit.

INDUSTRIAL PSYCHOLOGY 201T

The study of practical applied psychology, designed especially to meet the needs of the technical student. It includes behavior, development, human relations, leadership, selection of employees, individual differences, working conditions, and hours, related labor problems.

Four hours per week. Four quarter hours credit.

INDUSTRIAL ORGANIZATION AND MANAGEMENT 101T

The course is designed to introduce the practices, principles, and problems related to the organization of industry; and the management of various types of industry.

Five hours lecture. Five quarter hours credit.

MODERN CONSTRUCTION 201T

This course is designed to acquaint the students with modern architectural features, complete loans, bill of materials, specifications and construction procedures for a small residence.

Eight hours per week. Five quarter hours credit.

ADVANCED CONSTRUCTION 202T

This course consists of the more advanced elements of house construction. Special attention is given to roof framing, door and window installation, finishing floors, and trim.

Eight hours per week. Five quarter hours credit.

ADVANCED CONSTRUCTION 203T

A continuation of Advanced Construction 202T. Acquiring very accurate amounts and specific materials list, cost of materials and labor, specifications, sub-contracts, and the over-all cost of construction.

Fifteen hours per week. Nine quarter hours credit.

VOCATIONAL PROGRAMS

The vocational programs at Coahoma Junior College have been established to provide educational opportunities for those students not interested in a degree program.

Vocational students pay the same fees as other students.

A certificate of completion will be awarded each student who successfully completes any of the programs.

AUTO MECHANICS

A regular program of auto mechanics offered for students above high school age. A course of study consisting of the training of students in the various techniques of automotives tools and equipments. Related studies include mathematics, blue print reading, and various studies related to automobile mechanics. Shop practice consists of overhauling engines, transmissions, clutches, rear ends, brake repair, replacement adjustment, electrical systems, carburators, use of test equipment and such other operations as are required of an auto mechanic. It is designed to span a period of 18 months or a minimum of 1,800 clock hours. However, the time may vary in accordance with the individual student's interest, aptitude and abilities, etc.

This is a program designed to prepare students for the labor market immediately upon completion of the program.

AUTO BODY AND FENDER REPAIR

This is a regular program for students above high school age, to give them the knowledge needed to estimate damages and develop skills necessary to meet the needs of a body and fender repairman in the world of work.

Theory and shop work in the straightening of bodies and fenders, the alignment of bodies, and the proper use and care of the tools and equip-

ment used in industry. How to install the various types of glasses, to make up and properly install upholstery, and to disassemble and assemble auto bodies. The skill of painting, the theory of paints, and the mixing of colors, the techniques of electric and gas welding, the theory and skills of using the various materials on the market, the theory of operating and owning a shop, and the maintenance of shop tools and equipment. The program is designed to run 18 months or a minimum of 1,800 clock hours.

CONSTRUCTION MASONRY

This program is designed primarily for young adults who have dropped out of school and have no saleable skills. It is designed for the preparation of students for the labor market, at least, as an advanced apprentice or semi-skilled worker or to enter other programs of more sophistication in the same area of training.

The program consists of theory and shop practices in fundamentals of masonry: bricklaying, patterns and bonds, concrete blocks, terra cotta tile, and stone construction, plastering and stucco, concrete construction and finishing, and scaffolding. Related studies are: mathematics, blueprint reading, estimation, and other studies related to the masonry trade. A program designed to be completed in 9 months or a minimum of 900 clock hours.

COMBINATION WELDING

This program of nine months, or a total of 900 clock hours is designed for those who have limited or no experience in the field of welding. Students who successfully complete the program will have acquired the necessary knowledge and skills to enter the labor market in the welding trade and advance.

Shop practices as well as theory will be stressed. Shop practices will consist of tack, plate, and pipe welding techniques. The related studies will consist of mathematics, blueprint reading, the weldability of various metals and such other studies to enable the students to become efficient welders.

FARM EQUIPMENT MECHANICS

A regular course in farm equipment mechanics that includes maintaining, repairing, and overhauling farm machinery, equipment, and vehicles. These may include tractors, harvesters, pumps, tilling equipment, trucks and other mechanized, motor driven or electrically powered equipment on the farm or in a farm equipment repair shop. The proper use and care of shop tools and equipment and the use of test equipment.

The program will consist of theory as well as shop practice in all of the areas mentioned above and related mathematics, science and such other related studies as required as a farm equipment mechanic. A program designed for 18 months or a minimum of 1,800 clock hours.

MACHINE SHOP

This regular program is designed to train students in the fundamental operations of machine tools and equipment to the extent that they will be able to enter production at entry level machine operators. They will be required to do actual shop practice as well as related studies. Laboratory work, or shop practice includes: bench work, milling machine operations, metal planners, drill presses, lathe work, dole saws, tool making, instrument reading, etc. The related studies will include, mechanical drawing, blueprint reading, related mathematics, and various phases or studies as they relate to machine shop work. The course is designed to be completed in 18 months or 1,800 clock hours.

**PROGRAM OF STUDIES
HIGH SCHOOL DIVISION**

The High School Program of Studies seeks to provide youth with a comprehensive kind of education which is in keeping with the current demands of society. It is geared in such a way as to provide both adults and youth with the necessary experiences and skills for immediate and future use, vocationally and academically, in order that their social economic conditions might be constantly improved through educational growth.

Such a program is designed to afford a variety of general-systematized-meaningful experiences for all persons; to aid in the development of those basic skills and knowledges in a given vocation for those who have manifested certain interests and abilities; and to provide sound preparatory training for pupils who wish to continue their education in more highly specialized areas.

The ultimate goal of the high school program is to equip each student insofar as his capacity permits, for intellectual and special leadership in the age in which he lives. This embodies (1) helping students to become aware of their potentialities, (2) guiding them in participating in experiences which will intensify their development in the light of their respective abilities, and (3) helping them through sound instruction to amass skills for independent thinking and intelligent application.

Accordingly, therefore, the Program of Studies of Coahoma County Agricultural High School seeks to attain the following objectives:

1. To teach the basic skills which are necessary to enable all citizens within limits of human capacity and variation, to speak, to read and to write effectively, and to calculate accurately.
2. To build good American citizenship by providing activities in an environment whereby pupils can learn democracy and the American way of life by practicing it.
3. To produce critical thinkers—acquire factual knowledge, ability to analyze facts, weigh evidence, resist destructive propaganda, and form intelligent opinions.
4. To provide vocational knowledge and skills; to appreciate our free enterprise system; to derive personal satisfaction of good workmanship.
5. To build good relationships.

6. To develop good physical and emotional health.
7. To develop an appreciation of beauty in literature, art, music, drama and nature to enhance the profitable use of leisure time.
8. To develop an appreciation of our American heritage and traditions.
9. To teach correct behavior appropriate to all occasions and situations, and develop the ability and desire for self-control.
10. To recognize the worth of each individual and provide the type of work that will enable the individual to develop at his own rate of speed and on his own level of ability.

HIGH SCHOOL CURRICULUM

GRADE 9

	Units
English I*	1
General Science*	1
Modern Science	1
Geography	1/2
Civics	1/2
Mississippi History*	1/2
Consumer Math.	1
General Mathematics	1
Band	1/2
Choir	1/2
General Music	1/2
Spanish I	1
Agriculture I	1
Home Economics I	1
Art I	1/2
Health and Physical Education	1/2

GRADE 10

	Units
English II*	1
Biology*	1
World History	1
Home Economics II	1
Carpentry I	2
Algebra I	1
Spanish II	1
Band	1/2
Choir	1/2
Theory (Music)	1/2
Agriculture II	1
Art II	1/2
Health and Physical Education	1/2

GRADE 11

	Units
English III*	1
American History*	1
World Geography	1
General Business	1
Chemistry**	1
French I	1
Plane Geometry***	1
Carpentry III	2
Home Economics III	1
Band	1/2
Choir	1/2
Auto Mechanics I	2
Art III	1/2
Typing I	1
Secretarial Procedure	1
Bookkeeping	1
Health & P.E.	1/2

GRADE 12

	Units
English I V*	1
Government*	1/2
Prob. of Amer. Dem.	1/2
Economics	1/2
Algebra II***	1
French II	1
Home Economics IV	1
Carpentry IV	2
Physics**	1
Driver Education	1/2
Band	1/2
Choir	1/2
Sociology (Group Guidance)	1/2
Advanced Mathematics	1
Typing II	1
Shorthand I	1
Auto Mechanics II	2
Occupational Orientation	1
Health & P.E.	1/2

*Required

**General Science and Biology—Suggested Prerequisite

***General Mathematics and Algebra I—Suggested Prerequisite

MINIMUM PROGRAM REQUIREMENTS
(All Students)
SUBJECT

English	4
Mathematics	2

Science	2
**Social Studies	2 1/2
Electives	7 1/2
Total	18

One-half unit must be Mississippi History.

One-half unit must be Mississippi Government

One-half unit must be American Government

**One of these must be American History.

EDUCATIONAL PROGRAMS

The high school course offerings are so organized that students may elect to pursue any one of four types of educational programs, each of which is designed to meet special educational needs, and interests. Ample guidance is afforded the student in the choice of a program. The program and their features are as follows:

GENERAL: Designed for students who are uncertain about the careers for which they desire to prepare. The program meets entrance requirements of most colleges and provides a balanced educational background.

PRE-PROFESSIONAL: Designed for students who are definitely planning to enter college upon completion of high school work. This program especially provides the background prerequisites to training for the professions.

VOCATIONAL: Designed for students whose primary interests are in vocational or technical pursuits. Offerings in the several areas will provide the students sufficient basic training for further study in a chosen vocation and will generally equip him for immediate employment after high school graduation.

BUSINESS EDUCATION: Designed for students who plan to enter the business field in the areas of typewriting, stenography, bookkeeping or related work upon completion of high school.

MINIMUM REQUIREMENTS FOR EACH PROGRAM

General		Mathematics	2 Units
English	4 Units	Science	2 Units
Mathematics	2 Units	(Agriculture	3 Units)
Science	2 Units	(Carpentry	4 Units)
Social Studies	2 1/2 Units	(Home	
Electives	7 1/2 Units	(Economics	3 Units)
		Auto	
		Mechanics	4 Units
		Electives	4 Units
		Social Studies	2 1/2 Units
Total	18 Units		
Vocational			
English	4 Units	Total	18 Units

Pre-Professional		Typing	2 Units
English	4 Units	Shorthand	1 Unit
Mathematics	3 Units	Electives	3½ Units
Science	3 Units		
Social Studies	3 Units	Total	18 Units
Language	2 Units		
Electives	3 Units	Electives:	
Total	18 Units	1. Agriculture	
		Majors	6 Units
Business Education		2. Carpentry	
English	4 Units	Majors	4 Units
Mathematics	2 Units	3. Home	
Science	2 Units	Economics	4 Units
Social Studies	2½ Units	Auto	
General		Mechanics	4 Units
Business	1 Unit		

GENERAL INFORMATION

Students with an average of "B" or above will be encouraged to take 5 academic subjects. Students with deficiencies must take subjects in which they have failed before taking other subjects of their choice.

A student taking a foreign language must take a minimum of 2 years in the same language.

Students will be classified in grades (9, 10, 11, 12) according to their previously earned major units, as follows: 10th Grade—4 major units or more; 11th Grade—8 major units or more; and 12th Grade—12 or more units for those students whose records and present courses make them eligible for graduation at the end of the current scholastic year.

No fractional unit representing a subject for a whole unit is given will be accepted for meeting graduation requirements.

Students in any other program other than pre-professional may take additional units up to and including 18 units.

No student will be permitted to enroll in the last half of a full year course unless he has enrolled in the beginning of the course.

A student must be in attendance for at least seventy-five percent of each semester to be eligible to receive full credit.

A maximum of 5 units per year of transferred credits will be acceptable from other accredited schools.

a. The State Department of Education will determine the number of Armed Services Credits to be accepted.

REGULATIONS GOVERNING ELECTIVE MINOR SUBJECTS

The following elective Special Subjects are offered, as indicated, to First, Second, Third, and Fourth-year students of High School:

- *1. Band (9th, 10th, 11th, 12th) 5 periods per week ½ Unit
- 2. A Capella Choir (9th, 10th, 11th, 12th,) 5 periods per week ½ Unit
- 3. Music Theory (10th) 5 periods per week ½ Unit
- 4. General Music (9th) 5 periods per week ½ Unit

Note: Students needing special preparation for choir or band may be placed in General Music or Theory courses by their respective director, but may receive credit for only one music course at a time in such cases.

*Not more than two units may be included as a part of the total major units required for graduation.

The following extra-curricular or intra-curricular activities are available to all high school students, for which no credits will be allowed:

- 1. Football
- 2. Basketball
- 3. Baseball
- 4. Track
- 5. Annual Staff
- 6. 4-H Girls
- 7. 4-H Boys
- 8. Tri-Hi-Y
- 9. Hi-Y
- 10. Dramatics
- 11. Debating
- 12. Student Council
- 13. Oratorical

A student taking four major subjects shall not be allowed to take at the same time more than two special subjects and activities combined without special permission of the Principal, and in no event to engage at the same time no more than three special subjects and activities combined.

A student carrying five major subjects shall not be allowed to take at the same time more than one special subject or activity without special permission of the Principal, and in no event to engage in more than two subjects and activities at the same time of year.

A student averaging "D" in scholarship the previous year shall not take more than one special subject or one activity.



**Register of
FIRST ENROLLEES
and
GRADUATES OF THE JUNIOR
COLLEGE DIVISION**

**STUDENTS WHO ENROLLED IN THE
FIRST COLLEGE CLASS
1949-1950**

- | | |
|-----------------------|----------------------|
| 1. Jimmie Adams | 12. Effie Montgomery |
| 2. Caldonia Bland | 13. Mary Sanders |
| 3. Joseph Bissett | 14. Josephine Silas |
| 4. Eugene Fox | 15. Willie Stewart |
| 5. Timothy Gates | 16. George Strong |
| 7. Lee Roy Gorman | 17. Marion Topps |
| 6. Florence Gordon | 18. St. Henry Topps |
| 8. Morlon Henry | 19. Frank Towns |
| 9. Oliver Johnson | 20. J. D. Wardlaw |
| 10. Robert L. Johnson | 21. Orville Ward |
| 11. Earline Mille | 22. Percy White |

**STUDENTS WHO ENROLLED IN 1950-51
AND BECAME THE FIRST GRADUATING
CLASS OF THE COLLEGE IN 1952**

Charles Henry Ball, Jr.	Charles Harvey Berry
Addie Mae Beasley	Joseph Lee Bissett

Sadie Mae Boyd
 Areatha Brown
 Margaret Kyles Chapman
 Arnold More Chambers
 James Kantayana Cox
 Harry Cummings
 Chauncey O'Hara
 Daugherty
 Thomas James Freeman
 Eugene Gooden
 Florence Gordon
 Lillian Daugherty Hatch

Jean Yvonne Herron
 Annie M. Lumsey Hodges
 Mary Laura King
 Alva M. Carter Norphlet
 Thelma Penny
 Edna M. Pulliam
 James Robinson
 Myrtle Louise Thompson
 James Amos Ward
 Ann Ruth Williams
 Geneva Valjean Williams

**COMPLETED REQUIREMENTS IN THE
SUMMER SESSION**

Ruby Brown Cosby	Eddie Lee Riley
Laura G. Harris	Excell Terrell

1953 GRADUATING CLASS

Roland G. Farmer	Elizabeth Ann Raxton
Fulton Ford, Jr.	Charles Robinson
Inez Harris	Pinkie M. Steward
John W. Jenkins	Robbie Lee Thomas
Bernice Johnson	Corine Constance White
Gloriastine Martin	Mary Lou White
Minnie Ethel Nathan	Cleola Randle Yarbrough
James Piggie	William Myles Yarbrough

SUMMER, 1953

Mary Alice Stanford Jessie Webber

1954 GRADUATING CLASS

Audrey Ball	William H. Wright
Robert Ball	Clara Jones
Mary Shannon Brown	Herbert H. Logan
Alean Coburn	Ernestine Maiden
Charlie M. Crump	Sterling Martin
Gloria D. Daugherty	Levora Patterson
James Monroe Davis	Dorothy Donald Pearson
Madge Evans	Bennie L. Richard
Willie M. Farmer	Thomas Richardson
Engene Fox	Clem Sharkey, Jr.
Lillie Mae Gamble	Joyce Smith
Jerlene D. Gambrell	James Stanford
Gertrude Genus	Mary Etta Triplett
Melvin Harris	Chrysteene Winfrey
Naomi Harris	Mattie Williams Woods

1954 SUMMER GRADUATES

Jearlene Embry	Rosie Lee Richardson
Charles G. Hyde	James D. Wardlow

1955 GRADUATING CLASS

Jennie Lee Allen	S. J. McGovan
Barbara Jean Aldridge	Annie Louise Nichols
Ruth Barrett	Willie L. Norphlet
Nellie Jane Ola Baxtrum	Bernice Teresa B. Payne
Richard Bell	Clarence Janmes Pearson
James Herman Black	Dore Lee Raine
Thomas D. Coleman	Joseph Napoleon
Rheon Wyndell Gibson	Richardson
Jessie J. Gilmore	Walter Shelton
David Carl Harris	Mattie Silas
Aubrey E. Hill	Princie Lee Sills
Engene Howard	Patsy Ann Smith
Christine Penny Jenkins	John J. Steel
Earnestin Delilah Johnson	Edna Marie Stutts
Easter Maureen Kendricks	Ora Lee Terry
James William Lee	Ida Mae Turner
Larry C. Martin	Pearlie Gary Ward
Elizabeth Moses	Corinne Jordan

1956 GRADUATING CLASS

Grady W. Battle, Jr.	Bettye Nell Griffin
Edgar Bland	Edgar B. Griffin
Mabel E. Brown	William M. Gooden
Helen J. Calloway	Wesley Gordon
Alice Cochran	Jake J. Harris
Pinkie M. Davis	Ester Weston Haynes
Victor L. Dilworth	Mandie Jefferson
Delores Drake	Leola Sanders Keyes
Maxine Dupree	Delores Reno McNeal
Helen Carol Durr	Samuel James Miller
Marguerite Ford	Charles Henry Nathan
Wyrinie Dorris Foster	Williestein Parker
Versie Delois Gambrell	Mary Mildred Perry
Timothy L. Gates	Lillie Peral Ray

Julia Leola Rogers
Rachel Velma Shelby
Ollie Dean Smith
Verneice E. Smith
Lucille M. Terry
Grace Terrell

Ara Lee Toles
Eugene Trammel
Robert Tunson
Dewitt Ward
Mary L. Washington
Reuben Whisenton

1957 GRADUATING CLASS

Ella Zee Alphin Anderson	James W. Lloyd
Evelyn Ballard	Arzell Marshall
Barbara Baugh	Mozell Medlock
Guy William Baxtrum	Freda McClain Merchant
Willie C. Bell	Loretta Theresa Moore
Maxine Berry	Robbie E. McLaurin
Charlie Mae Bullock	Norman McFarland
Irene Braxton	Armond Odom
Odie Cross	Gene R. Patton
Mary Crowther	Neomi Pittman
Paul Crowther	Marva Perry
Addie Dennis	Edward Pickett
Jessie Dan Dixon	William Jessie Randall
Cornelius Douglas	Bill Reed, Jr.
Louella Edwards	Melvin Charles Riley
Yvonne Isabella Flakes	Mattie Pearl Richardson
Effie Marie Flowers	David Robertson
W. C. Franklin	Elaine Robertson
Irene Gilbert	Dorothy Lee Sharkey
Bennie Stone Gooden	Charles Slan
Ruth Lillian Gregory	Willie Smith
Willie Ross Grizzell	Shirley Smith
Lillie Mae Hamilton	Eula Cecil Spiller
James Wesley Hatley	Alphonso Spells
Freddie Beatrice Hardy	Prince Conda Stephens
Lacy Henderson	Katie Thomas
Exie Mae Herring	John Estis Trammel
Birda Mae Howell	Edward Howard Triplett
Mildred Hubbard	Gene Douglas Todd
Hudson Lester Hubbard	Lillian Walker
Edna Mae James	Sidney Wallace
Prentice Lee James	Dorothy Armstrong
Ernest Johnson	Wardlow
Hersel Jones	Charles Etta Watts
Dorothy Kimble	Julius Watts, Jr.
Carolyn D. Laws	Peggy Ann Watts
James Lawrence	Raymond Mack Williams
Corine Lloyd	

1957 SUMMER SESSION GRADUATES

Katherine Hayes	James W. Johnson
-----------------	------------------

1958 GRADUATING CLASS

Glenella Ackles	Frank Braugher
Lula Adams	Louise Braxton
Everette Lee Allen	Jo Louise Brown
Verdean Allen	Willie arl Brownlee
Ethel Archie	Marie Cannon
Saul Austin	Henry Clay
Arthur Barnes	Alma Jane Cole
Sarah Ellen Bell	Martha Lee Coleman
Christine Voncile Bender	Jewett Conner
Frank Bluntson	Benson Cotton

Ossie Lee Cotton
 Taylor Cornelius Cotton
 Jr.
 Robert Crawford
 Lillie Davis
 Carolyn Douglas
 Jean Dupree
 Willie Mae Edwards
 Eddie Lee Fant
 Minnie Pearl Ford
 Lawrence Furdge
 Joyce Marie Gosa
 Kay Frederick Grace
 Arnold Harris
 Jimmy Simpson Harris, Jr.
 Johnny Leroy Harris
 Marvin Harris
 Elouise LeJune Hatchett
 Bessie Lee Cole Hawkins
 Doretha Haynes
 Jessie Mildred James
 Annie Laurie Jones
 Samuel Jordan
 Mary Alice Kearney
 Quince Ella Kidd
 Margie Marie Lailes
 James Lamar
 Anderson Lenard
 L. B. Lenard
 Neadie Lewers

Matthew Maiden
 Juanita Cosby Miller
 J. B. Mitchell
 L. C. Mitchell
 Carrie Montgomery
 Louise Montgomery
 James William Morris
 Bessie Mosley
 Rosie L. Mosley
 Theodis Hampton Outlaw
 Dorothy Mae Pearson
 Mary Ratliff
 Yvonne Rich
 Lloyd Robinson
 Jessie S. Scott
 Chambers Smith, Jr.
 Edna Earl Smith
 Gertie Bell Smith
 John H. Smith
 Leon Stewart
 Odell Tate
 Fannie Beatrice Taylor
 C. H. Wagster
 Roy Stovall Walker
 Pearlle Watson
 Mildred Wells
 Johnny Williams
 Roland Winn
 James Wilson
 George Young

1959 GRADUATING CLASS

Elnora Adams
 Georgia Agnew
 Henry Allen
 Esley Ambrose
 Dorothy Mae Batteast
 Ruth Antoinette Batton
 Newton B. Billups, III
 Catherine Black
 Marshie Black
 Blondine Brown
 Isiah Brown, Jr.
 Edna Mae Bryson
 Annie Laurie Butler
 Mae Nell Byrd
 Evelyn Casey Campbell
 Shirley Deane Collier
 Ledora Cooper
 Lucinda Joyce Crawford
 Shirley Crawford
 James M. Dobson
 Melton Lawren Douglas
 Andrew Dupree, Jr.
 Dock Ford, Jr.
 Elijah Forkner
 Ned Gathright
 Odessa Grey
 Tom Hamor
 Freddie Haynes, Jr.
 Nolia Jean Hill
 Ruby Holden
 Earlean Mae Hubbard
 Andrew K. Jackson

Johnny Wesley Jackson
 Minnie Pearl Jenkins
 Claudette Colbert Jones
 Indiana Jones
 Jessie Jossel, Jr.
 Leroy Gilbert Jossel
 Lucile Keys
 Rosie Mae King
 Mary Louise Lee
 Mary Lewers
 Johnny Lee Lewis
 Claudette Matheny
 Angie Viola Mitchell
 Linnie Jean Mitchell
 Shirley Neal, Jr.
 Mary Alice Nelson
 John Patterson
 Jessie Paxton
 Alice Randle
 Joe Ann Shelton Read
 Georgia Richardson
 Pearlline Deloris Riley
 James Austin Shelby
 Helen Shields
 Veblyn Sims
 Dorothy Mae Smith
 Joyce Lyn Smith
 Fannie F. Taylor
 Lillie M. Thomas
 Samuel Torrence, Jr.
 Joe Willie Trotter
 James Clotel Vaxter

Screetha Vaughn
 Williette Washington
 Eleanor Wells
 Sadie Wilkins

Lessie B. Williams
 James Winters
 Eva Mae Yates

1960 GRADUATING CLASS

Acles, Milton Dudley
 Barial, William Earl, Jr.
 Brown, Edward Charles
 Carter, George
 Carter, Grace Adlene
 Carter, Ottawa E. L.
 Cavers, Cornelius Jake
 Clark, Barbara Jean
 Clay, Bertha Lee
 Collins, Willie E.
 Cunningham, Hansel
 Dorsey, Isaac
 Erby, Shirley Ann
 Ford, Romonia Cresie
 Franklin, Clyde
 Gooch, Annie Pearl
 Gulleddge, Mattie
 Harris, Thomas B.
 Harvey, Josephine Williams
 Hatchett, Elnora August
 Henderson, Lucy Mae
 Hogan, Marvin
 Holden, Ethel
 Holloman, Helen D.
 Williams
 Homer, Mary Lee
 Hoskin, Ida Mae
 Ingram, Belvin Ann
 Jackson, James Edward
 Jackson, Ruth Otis
 Jackson, Spellmon James

Kemp, Georgia
 Kincaid, Gloria Bell
 Knight, Willie, Jr.
 Macklin, Charner L.
 Martin, McKinley C.
 Miller, Annie Ruth
 Miller, Leo Anthony
 Morris, Roseanett
 McClellan, Ora Lee
 McDonald, Walter M.
 McSwine, Earmon Ray
 Nichols, William A.
 Paden, Clinton Dale
 Posey, Geraldine Annett
 Rice, Mary Ann
 Roach, David L.
 Shannon, John L.
 Shaver, Laverne
 Smith, Cordie Alberta
 Smith, Edward James
 Stubbs, Lynell C.
 Swain, Quinton Eugene
 Thigpen, Edward
 Turner, Doris Ann
 Turner, Fannie L.
 Wade, Jessie, Jr.
 Wade, Lenesy Sam
 Wooten, William T.
 Woullard, Jacob
 Wright, Teola

1961 GRADUATING CLASS

Acker, Milton
 Adams, Annie
 Agnew, Clemmie
 Aldridge, Marvin
 Bell, Nevell
 Boone, Kathleen
 Brown, Dan, Jr.
 Bryson, Mary Della
 Buckley, Mattie Mae
 Butler, Emma Mae
 Cathey, Billy Ray
 Chase, Bernice Fleming
 Clark, Mose Calvin
 Cole, Robert
 Cole, Ruus
 Collins, Annie Lee
 Colilus, John Henry
 Coney, Thelma Inez
 Cdum, Claudette B.
 Cunningham, Marjorie
 Curry, Katherine
 Dandridge Robert
 Davis, Woodrow W.
 Dilworth, Robert

Doss, Velmer L.
 Dugar, Clarence
 Dugger, Karlee
 Edward, Arvid
 Ellis, Yvonne
 Gambrell, Maggie Jean
 Gooden, Joseph Allen
 Grant, Monroe
 Grear, Johnny
 Green, Norman R.
 Griffin, Barbara
 Haley, Lenard
 Harden, Revonnie
 Harris, Charlene
 Harris, Glennie Virginia
 Harris, James Weldon
 Harris, Vann Lee
 Haynes, Hilliard
 Hemphill, Annie Jean
 Henderson, Lewis, Jr.
 Holloway, Robert James
 Holmes, Edward
 Holmes, J. B.
 Hughes, Chester, Jr.

Hunt, Daniel L.
 Iverson, Robert
 Jamison, Emma Kate
 Jasper, Oscar
 Jennings, Georgia
 Johnson, Charlie, Jr.
 Joiner, Barbara
 Jones, Rosie Lee
 Jones, Shirley Jean
 Joyner, Eula Gene
 Kirk, Tommy Dean Myles
 Leflora, Jannie Mae
 Lenard, Josephine
 Lloyd, Margaret Jean
 Mallard, Elaine
 Marshall, Neeley
 Miller, Kertrina
 Morgan, Ed Lee
 Morris, Earless Polk
 McGee, Bobbie Jean
 McLaughlin, Ronald
 Edward
 McNair, Fred Earl
 Nelson, Betty
 Nobles, John Wesley
 Norvel, Robert R.
 O'Neal, Hellen Jean
 Pace, Daniel Myles
 Paraham, Ruby Lee
 Parker, Eugene
 Parish, Robert Pearl
 Pickett, Lanston B.
 Polk, Henry Louis
 Posey, George Edward
 Price, Peter Dilworth
 Quinn, Ray
 Reed, Matthew
 Rice, Dora Ann

Riley, Roy Lanair
 Robinson, Booker T.
 Rogers, Pollie G.
 Shelton, Robbie Lee
 Siggall, Carrie Alberta
 Smith, Carenea
 Smith, Dorothy J.
 Smith, Hattie Jo
 Smith, James E.
 Smith, O'Neal, Jr.
 Smith, Reubin
 Southard, Clifton
 Sullivan, John Douglas
 Sutton, George M.
 Swington, Flora Stean
 Tanner, Hersey L.
 Tate, Mable
 Taylor, Dorothy Lucille
 Taylor, Luvenia
 Tolliver, John
 Trammell, Robert Earl
 Turner, Barry G.
 Turner, Bobby E.
 Turner, Mildred
 Walker, Lucell
 Ware, Alfred Darnell
 Ware, Lillie Beatrice
 Webb, Benjamin C.
 Wells, Narviree
 White, Frank, Jr.
 Wilder, Lawrence Gene
 Wiley, Jimmy
 Williams, Douglas
 Williams, Joseph
 Williams, Lueizera
 Willis, Engene
 Willis, Jo Ethel
 Yates, Daisy

Hudson, Gloria J.
 Huey, Pernell
 Hurley, Andrew
 Hutchins, Kermit
 Jackson, Dorothy J.
 James, Charles
 Jefferson, Dorothy M.
 Jenkins, General
 Jennings, Robert L.
 Johnson, Bruce
 Johnson, Estella
 Johnson, Tommy
 Johnson, Walter
 Jones, Frank
 Jones, Odessa
 Jones, Selener
 Jordan, Johnnie
 Kennedy, Thomas
 Lee, John
 Lee, Mitchell
 Lewis, Ernest
 Lewis, Oma Jean
 Lester, Shelby, Jr.
 Liggins, Lobenon
 Madlock, W. Eugene
 Mason, Emma
 Matthews, Thomas
 Milons, Dorothy
 Miller, Leon
 Mitchell, Grady
 Montgomery, Tommie
 Moton, Derma K.
 Myles, Charles
 Myles, Robert Lee, Jr.
 McClelland, Martha Ann
 McCurdy, Dorothy
 McIntyre, Bobby
 McLaurin, Sarah Nell

McNair, Estellar
 Nichols, Myra
 Odom, Earther L.
 O'Neal, Dorothy
 Patterson, Berdie
 Perkins, Doris
 Ray, Henretta
 Rattler, R. P.
 Robinson, Henry
 Robinson, Priscilla
 Robinson, Tom
 Salters, Raford L.
 Scott, Billy Ray
 Shaw, Claudine
 Sims, Earleane
 Skipper, Lero y
 Smith, Barbara
 Smith, Beulah
 Smith, Elvia
 Smith, Ruby
 Spencer, Cornelia
 Stewart, Jesse James
 Stimage, Ruby Jean
 Thomas, Charles L.
 Tillis, Joseph
 Tigue, Lucille
 Tuckson, Jannette
 Turner, Velma
 Ward, Osceola
 Watkins, Mary Helen
 Washington, Joyce
 Washington, Ruby
 Webster, Carrie
 Wells, Washington
 Williams, Andrew
 Willis, Mazell
 Wilson, Otis

1962 GRADUATING CLASS

Allen, Jannie
 Allen, Mary Louise
 Anderson, Nathaniel
 Armstrong, T. L.
 Artis, Mary E.
 Bennett, Robert
 Bivins, Frank
 Boyd, Donald G.
 Boyd, Quincy
 Brooks, Lee Roy
 Brown, Betty Joe
 Brown, George
 Brown, James A.
 Brown, Lee Dora
 Brown, Leotho
 Brown, Lester
 Carter, Bettye
 Carter, Juanita
 Carter, Roosevelt
 Chapman, Henry, Jr.
 Collier, Merle
 Cosby, Rhenette
 Cotton, Dora
 Cotton, Lassye V.

Crouther, Mary E.
 Davis, Shirley
 Dockey, Detroit
 Dorsey, Henry
 Edwards, Verline
 Ford, Bessie
 Fountain, Eva L. Mille
 Fox, Virginia
 Gaston, Curley
 Gathright, Emma
 Gathright, Mary
 Gilmore, Beverly
 Gipson, Beverly
 Givens, Freddie
 Gray, Emma Jean
 Griffin, Joseph
 Grisby, Otha
 Hall, Frances
 Hall, Vera
 Hawkins, Lester
 Henderson, W. T.
 Hill, Mildredge
 Holmes, Ethel
 Holmes, Vala D.

1963 GRADUATING CLASS

Adams, Terrance O.
 Adams, Willie Matte
 Agnew, Johnny
 Allen, Winsdale, Jr.
 Bays, Lela
 Black, Ernestine
 Black, Steppney
 Blocker, Claude, Jr.
 Boyd, Frankie Mae
 Bradley, Annie
 Brewer, Helen Irene
 Brown, Archie Gene
 Brown, Josephine
 Brown, Katie Mae
 Bryson, Lessie Rae
 Buckley, Idella M.
 Bumpus, Ollie
 Bunns, Betty Jean
 Burnett, Chester A.
 Burrel, Timothy
 Campbell, Juliaphene
 Carter, Charles
 Chapman, Delores Y.
 Chase, Edna E.

Cocraft, Clarence
 Cole, Dora Miller
 Coleman, Chester
 Collier, Delores
 Crawford, Eartis
 Dallas, Hezekiah
 Davis, Mary Alice
 Davis, Paul Eddie
 Dodd, Mae Otha
 Dodd, Willie Edward, Jr.
 Douglas, Roosevelt J.
 Fair, Marshall
 Ferguson, Johnny
 Fields, Wilbert
 Fisher, Lucy Mae
 Franklin, John
 Franklin, Roy Lee
 Frierson, Henry F.
 Furdge, Elzery
 Genus, Pearl
 Gholston, Rosa
 Giddens, LaVon
 Gilmore, Wilson
 Gipson Gwendolyn

Glenn, Lucille
 Graham, Floyd E.
 Green, Marshall L.
 Greenwood, William
 Griffin, Walter, Jr.
 Haggan, Lary James
 Harkless, Collins J.
 Harris, JJoe E.
 Hearn, Minnie E.
 Henderson, Herman
 Hicks, Rozetta B.
 Hodo, Josephine
 Hogan, Clarence C.
 Hogan, Preston E.
 Holland, Charlie
 Hollingsworth, Bobbie
 Howard, Frank
 Hudson, Modean
 Hudson, Starkey L.
 Hughes, Emma R.
 Humphrey, Jesse L.
 Jasper, Dorothy J.
 Johnson, Willie
 Jones, Fredricka
 Jones, Marean
 Jones, Sylvia L.
 Jones, Thomas L.
 Knox, Mildred
 Lamar, Henry Lee
 Land, Dorothy M.
 Lathan, Huie L.
 Lawrence, John E.
 Layton, Alfred C.
 Lewis, Henry G.
 Love, Oscar, Jr.
 Mackifield, Barbara
 Madlock, Dorothy
 Mason, Oscar
 Moore, Paul Edward
 Moran, Johnny L.
 Morris, Willie J.
 McCathen, Hubert
 McFarland, William
 McLaughlin, Delores
 McLaughlin, Helen
 Nichols, Lurene

Page, Joseph
 Patterson, Crotaluer
 Phipps, Hattie Mae
 Pipping, Willye D.
 Powell, Tyrone
 Puryear, Robert Earl
 Rayford, Albert D.
 Richards, Leonard
 Richardson, Howard
 Richmond, Jessie B.
 Roberson, James
 Robertson, Lloyd, Jr.
 Robinson, Callie
 Rockette, Hattie L.
 Shamblee, Willie A.
 Shegog, Maxcine
 Shelton, Rhoda B.
 Singleton, Alonzo
 Smith, Adline
 Smith, Frederick N.
 Smith, Lana Mae
 Stewart, Barbara
 Stewart, Billy
 Tennessee, Lenvi
 Thomas, Aaron
 Thomas, Earnest
 Thompson, James
 Thompson, Johnny
 Tigue, Jerlena
 Tolbert, Jimmie L.
 Toldson, Ivory L.
 Trass, Mildred
 Turner, Lue J.
 Wade, David
 Weaver, Nathaniel
 Wheeler, James
 White, Wonso G.
 Wilbourn, Ora L.
 Williams, Floyd
 Williams, Herkie Lee
 Williams, Juanita E.
 Williams, Mary
 Wilson, Susie Mary
 Young, Howard Lanier
 Young, Joyce
 Zollicoffer, Sherman

Cummings, Clinton L.
 Douglas, Katie
 Dawson, James E.
 Davis, Arthur
 Davis, Joe Fisher
 Davis, Laura B.
 Davis, Mary L.
 Donaldson, Robert L.
 Ervin, Wendell S.
 Featherstone, Shirley
 Flagg, Cleveland, Jr.
 Forbes, Cecil
 Franklin, Frankie B.
 Frazier, Bessie L.
 Garrett, Clifton D.
 Gipson, Armonia
 Givens, Gladys
 Golden, Joe Lewis
 Gordon, Celestine
 Goss, J. D.
 Grantham, Willie C.
 Gray, Sara Ann
 Green, Wilson
 Griffin, Ernest W.
 Guy, James Julius
 Hardmon, Frank
 Haro, William H.
 Harris, Lurene
 Harris, Willie C.
 Harvey, Leon
 Hawkins, Velma L.
 Hayes, Jessie Pearl
 Hayes, William Nelson
 Hill, Purvis W., Jr.
 Horton, Joseph
 Houston, Allene M.
 Hutton, Ethel Lee
 Jackson, Eular M.
 Jackson, Wilson
 Jarvis, David L.
 Jefferson, Joseph E.
 Johnson, Barbara A.
 Johnson, Emanuel
 Johnson, Ginise
 Johnson, Hazel
 Johnson, Lonnie L.
 Johnson, Melvin D.
 Johnson, Omer Jean
 Jones, Ira James
 Jones, Charles H.
 Jordan, Imogene
 Knight, Charles
 Kinsey, Johnnie
 Lee, Beulah
 Lee, Nathaniel
 Lee, Odessa
 Lee, Sylvester
 Lenard, Roosevelt
 Lewis, Bobbie Jo
 Liggans, Rufus
 Love, Conroy
 Mallett, John H.
 Marzette, David
 Meeks, Zeddie Mae
 Miller, Lucille
 Moore, Eddie L.

Moore, Samuel B.
 Moore, Stanley G.
 Moton, Eddie Mae
 McClelland, Mary A.
 McClinton, Pearl
 McGowan, Edward
 McKinney, BaBrbara
 McLaurin, Evander D.
 McFarland, Bonnie J.
 Nathan, James
 Nelson, Leroy
 Nicholson, Grover
 Patterson, Zeldae Mae
 Pittman, Jimmie D.
 Peyton, Eleanor A.
 Potts, Fannie Mae
 Price, Betty Rie
 Pryor, Alvis, Jr.
 Rouser, Joseph
 Scott, John Henry
 Scott, Willie Lee
 Sims, Monroe H., Jr.
 Sims, Pearleane
 Skipper, Bertha Mae
 Smith, Ruby Dean
 Sonley, Willie, Jr.
 Standard, Eldridge
 Stanks, Engene
 Stepter, Gladys
 Stewart, John A.
 Stewart, Bobby
 Stewart, Sheridan
 Stewart, Velma Jean
 Stringer, Robert
 Strong, Delores C.
 Taylor, Alford
 Terrell, Robbie
 Thaddies, Betty A.
 Towner, Leo
 Troupe, Lillian Mae
 Turner, Francis R.
 Walker, Ollie, Jr.
 Walker, Willie
 Walton, Edgar
 Ward, Elizabeth
 Ware, Dorothy Mae
 Ware, Louise
 Webb, Charles E.
 Wells, Johnny B.
 Wells, Roberta Ann
 Wells, Charlie
 White, James
 Whitfield, Dorothy
 Wiley, Viola
 Williams, Arie Carolyn
 Williams, Clemmie Lee
 Williams, Dariah Y.
 Williams, Ella Mae
 Williams, Evelyn
 Williams, Flora Mae
 Williams, James
 Williams, Olevia
 Williams, Shirley T.
 Wilson, Dunn E.
 Windham, Sylvester
 Windless, Lillie Mae

1964 GRADUATING CLASS

Anderson, Florence
 Barron, Catherine
 Booker, Esther L.
 Boston, Charles
 Braden, Joseph
 Bland, Jerlene
 Blocker, Dorothy
 Bradley, Catherine P.
 Brinson, Jacquelyn
 Brown, Allena
 Brown, Ora Elizabeth
 Brown, Turner R.
 Bruce, Thomas
 Buckley, Frank
 Burnside, Albert
 Burt, Dorothy Lee

Burt, Patricia Ann
 Butler, Margie N.
 Butler, Ozell
 Cain, Fredericka
 Carter, Evelyn
 Carter, Willie Mae
 Catchings, Robert A.
 Chavers, Roosevelt
 Christen, Lucinda
 Clark, Felton
 Clark, Willye Bell
 Conner, Katherine
 Cosby, Richard
 Cotton, Barbara J.
 Cotton, Mary
 Crawford, George W.

1965 GRADUATING CLASS

Abram, James Henry	Hill, Sarah	Sorrell, Earnestine	Washington, Jessie Mae
Alexander, Maggie L.	Hinkle, Edmund	Stanord, Otis	Webb, Lois Evelyn
Allen, Maceo	Houston, Myrtle	Stansbury, Elma Louise	White, Franklin D.
Allison, Thomas	Howard, Dollie Mae	Stevenson, arva	Wilkins, Jimmy
Arrington, Earnest	Howard, Lucille	Stevenson, Mary Ann	Williams, Ellen
Bailey, Clarence	Hudson, Marilyn Williams	Stewart, Bascom	Williams, ames T.
Battle, Minnie Bell	Hughes, Alice Faye	Sullivan, Carole Elois	Williams, Sallie Pearl
Bell, Murtis	Hurley, John Frederick	Taylor, Clara B.	Willingham, Emma Dean
Blountt, Leo	Ingram, Sylvester, Jr.	Taylor, Doretha	Witherspoon, James Melvin
Boone, Robert	Jackson, Emma Sue	Thompson, Bobbie Ree	Woods, Annie Lee
Brown, Archie	Jackson, Eunice	Towner, Charles Edmund	Woods, Connie J.
Brown, Gwendolyn L.	Jackson, Freddie Lee	Turner, Etta Jean	Worthy, Bessie Marie
Brown, Leatha Ann	Jackson, Gladys	Wade, Wilson	Worthy, Willie Mae
Brown, Robert Louis	James, Celestine Margaret	Ward, Mattie Mae	
Bruce, Calvin	Jenkins, Joe, Jr.	Washington, Bobbie Mae	
Buckley, Thelma	Jenkins, Verber T.		
Burt, Amzi B., Jr.	Jennings, Ruth		
Burton, Alice Shannon	Jordan, Theory Doll		
Burton, Cotsie T.	Johnson, Alberta		
Burton, Joe	Johnson, Frank		
Byas, Lillie Jean	Johnson, Lucille		
Campbell, Annie Jean	Johnson, Louis, Jr.		
Campbell, Annie Mildred	Johnson, Patricie		
Campbell, David Hosea	Johnson, Pokey Elizabeth		
Campbell, De Voyce	Langston, Victoria		
Carter, J. C.	Lindsey, Bettye Deloise		
Carter, Rayford Lee	Mallett, Fannie Inell		
Carter, William Henry	Mitchell, Mary Walker		
Clark, Oliver	Moore, James		
Clayton, Tommie Lee	Morgan, Shirley Faye		
Colbert, Mary Lee	McBride, Leroy		
Cole, Verneeda	McBride, Mary		
Coleman, Josephine	McCoy, Nathaniel		
Collins, Arthur	McDonald, May Francis		
Collins, Yvonne	McLaurin, Michael Stewart		
Cooley, Dessie Ree	Nathan, Letha Dell		
Criss, Hildre	Newson, Bertha		
Daniel, Odell Lamar	Noah, Pearlle Mae		
Daniel, Pearlean	Pettis, Leon		
Davis, Lester, Jr.	Peterson, Isahiah		
Doyle, Martha J.	Pickett, George		
Dye, Wanda Nell	Potts, Samuel Cleveland		
Fields, Levi	Puckett, Lavern		
Fleming, Catherine	Rayord, Thelma Jean		
Flenorl, Tom Henry	Reves, Arthur G.		
Ford, Stella Mae	Reynolds, Jimmy		
Fox, Ella Mae	Reynolds, Louise		
Frankin, Mae Willie	Richmond, Mattie		
Furdge, Joseph	Rieves, Rogers M.		
Givens, Elois	Robinson, Annie C.		
Gooden, Addie	Robinson, Dorothy Lee		
Gray, Isaac H., Jr.	Robinson, Erly		
Gray, Lena Pearl	Rogers, John Thomas		
Gray, Lois	Rogers, Martha Ree		
Harper, James Wesley	Saddler, Jesse		
Haro, Arthur	Sarvis, Juanita Matthews		
Harper, Patricia Ann	Sellers, Jimmie Ann		
Harris, Frankie	Simmons, John Robert, Jr.		
Harris, Mae Evelyn	Sims, Zette B.		
Hawkins, William	Small, Leora		
Haymon, Edward	Smith, Beverly Ann		
Haynes, Elmer	Smith, Helen Jeanette		
Henderson, Leonard	Smith, Marshia Jeanette		
Hill, Leroy			

1966 GRADUATING CLASS

Adams, Alvernica	Dillard, Johnny
Adams, Barbara	Dixon, Fannie Bell
Agnew, Willie Eva	Durr, Robert Dell
Anderson, Anna Osborne	Earvin, Bennie Lee
Anderson, Mattye Ruth	Eley, Marion Juanita
Andrews, Arma Jean	Ellis, Rubye M.
Austin, Ronald L.	Epps, Clotee Barron
Autmon, Jimmie Earl	Fairley, Louis
Banks, Ceola	Figgs, James Russell
Barnett, Barbara E.	Flagg, Roy Tom
Barnett, Mary Elizabeth	Flowers, Amos Lee
Betts, Henry Steve	Ford, Malinda Tigue
Bradley, Freddie	Gates, Barbara Jean
Breaux, Theodora M.	Gates, Julia F.
Brooks, Nathaniel	Gibson, Robbie Lee
Brown, Aristeon	Grady, Brenda Joyce
Brown, Beatrice	Gray, Barbara Earl
Brown, Charlie	Green, Irma Webb
Brown, Edgar	Greer, Jimmy D.
Brown, James Everett	Greer, Murphy Rayford
Brown, John L.	Griffin, Imogene
Brown, Louise	Griffin, Queen Ester
Bryant, Miniee J.	Hall, Erma Ruth
Burney, Earl Leon	Halsell, Tommy Dean
Burrell, Leon	Hannah, John Edgar
Burton, Jesse	Hardmon, Andrew
Cain, Lula Mae	Harrison, William Henry
Carson, Beatta	Hatchett, Marilyn M.
Carter, Florean	Henderson, Bessie Lee
Carter, Mattie P.	Henderson, Cleotha
Carter, Lee Roy	Henderson, Jessie Mae
Carter, Robert	Henry, Walterene
Clark, Mary M.	Herndon, Mable Ann
Cleveland, Benjamin F.	Hill, Edith
Coleman, Dorothy	Hill, Jo Ann
Collins, Richard	Hinton, Dorothy M.
Collins, Solomon	Hodges, Essie Marie
Conwell, Bonnie Mae	Hollimon, Eldridge
Cooper, Charles	Hutton, Lucy
Costict, David	Ivy, Dilcy Ann
Croft, James Tilman	Jennings, Robert
Curry, Lula Mae	Johnson, Robert
Curtis, Barbara Ruth	Johnson, Vallena
Davis, Frankie R.	Johnson, Willard
Davis, Mattie	Jones, Freddie
Davis, Oscar	Jordan, Earnestine
Davis, Pauline	Jordan, Mary Alice

Journigan, Roy
 Joyner, Jerdene
 Kelly, Joe Haywood
 King, Sallie M.
 Kinnard, Alfred
 Kirkland, Vera Elaine
 Kirkland, Verna Yvonne
 Lee, Judge H.
 Levy, Shirley
 Lewers, Azria
 Long, Arthur Myles
 Love, Marva
 Luckett, Lula
 Magee, Violet
 Manning, Augustus C.
 Mickles, Earnest
 Mills, Erma L.
 Mitchell, Panola
 Moore, J. D.
 Moore, Rufus
 Mosley, Orborn
 McClellan, Thomas J.
 McClelland, Lennie J.
 McGee, Jesse C.
 McGee, Linda C.
 McGregory, Leoa L.
 McHenry, Jenie
 McKinney, Marchell
 McLaurin, Esther Jean
 McMurtry, Lee
 McNair, Virginia Sue
 McShepard, Grannel
 McSwain, Eartha
 Nash, Shirley J.
 Neal, Herdistine A.
 Norman, Eve Jean
 O'Neal, Charlie
 Osborne, Frank
 Pace, Zora Nell
 Parker, Helen
 Patton, Melvin G.
 Pettis, William
 Randle, Mildred Y.
 Reeves, Willie
 Reid, Emma Vernell
 Riley, Daphine Eola
 Robertson, Margaret
 Robinson, Zelma
 Rollins, Moses
 Ross, James Arthur
 Rucker, Joyce
 Russell, Bessie
 Sanders, Odessa
 Scott, Joseph D.
 Scott, Melver Lee
 Seals, Vera Dean
 Self, Olenza E.
 Shaw, Mary Ann
 Simmons, Eva
 Sims, Elizabeth
 Sims, James
 Skipper, Josephine

Smith, Annie Mae
 Smith, Annie Ruth
 Smith, Ella M.
 Smith, Arlene
 Smith, John Alton
 Snerling, Roy L.
 Spann, Leola
 Spears, Martha Jane
 Spears, Rosie Mae
 Stanord, Annie B.
 Spencer, Willie S.
 Stansbury, Ethel L.
 Stanton, June Geneva
 Stewart, John R.
 Stewart, Mary Arnold
 Stewart, Rose Mary
 Stringer, Marion N.
 Stubbs, Thomas E.
 Taylor, Roosevelt
 Taylor, Sevela
 Thomas, Kenneth L.
 Thomas, Larry James
 Thomas, Lillie Bell
 Thompson, Cornelius
 Thompson, Leathoial
 Thompson, Woody H.
 Todd, Fontroy
 Todd, Johnny L.
 Toliver, Abe
 Toliver, Robert
 Tripp, Charles Tyrone
 Turner, Allen Larneal
 Turner, Barbara Jean
 Turner, Eddie James
 Turner, James T.
 Tyler, Louis Douglas
 Upchurch, Mariland David
 Wade, Roy C.
 Walker, George N.
 Walker, Mildred
 Walls, Arthur L.
 Walls, John E., Jr.
 Ware, Christen
 Ware, Mary Elizabeth
 Wash, Arthur, Jr.
 Washington, Josie
 Webb, Mary Louise
 Westbrook, Emma J.
 West, Emma
 White, Mamie Ruth
 Williams, Annie J.
 Williams, Francye L.
 Williams, Janice Marie
 Williams, Mose
 Willis, Patricia
 Windham, Calvin E.
 Woods, Eddie
 Woodfork, Grover
 Wright, George W.
 Wright, Hattie Jean
 Wright, Roy Bell
 Young, Mary

*Armstrong, Martha
 Ashley, Michael
 Ashley, Ophelia
 Bailey, Calvin
 Baker, Bessie M.
 Ballard, Thomas
 Barnes, Ethel
 Bass, Johnnie M.
 Bennett, Mary J.
 Bennett, Robert E.
 *Benson, Cora E.
 Blake, Mary J.
 Bolton, Annie L.
 Bonner, David
 Booker, Della R.
 Bradberry, Matthew
 Brookshire, Doyce W.
 Brown, Denotra
 Brown, Herman
 *Bryant, Edna
 Bryson, Walter L.
 Bullard, Vivian
 *Butler, Rena L.
 Calvin, Bessie B.
 Carney, John D.
 Carodine, Timothy
 Carr, Ocoelia
 Carter, Annette
 Carter, Essie
 Carter, Mary L.
 Chamebrs, Ada
 *Cleveland, Jerry
 Coleman, Ronald
 Cotton, Carrie L.
 *Cowan, Barbara
 Cowan, Dave
 Cummings, Charles
 Daily, Delores
 Davis, L. B.
 Davis, L. E.
 Davis, Margie
 *Davis, Willie A.
 Delaney, Marilyn
 *Dixon, Wilma
 *Ducking, Mattie
 *Dupree, Cella R.
 Edmond, Earnest
 Edwards, Arthur
 Ellis, Francis J.
 Fairman, J. W.
 Flenorl, Mildred
 Flowers, Dennis
 Foster, Hubert L.
 Frierson, Amelia
 Gates, Ruth Ann
 *Gerard, Joe L.
 Gibson, Roosevelt
 *Giles, Robert
 *Givens, Rogers
 Graham, Glenda
 Gray, Bertha L.
 Gray, Bettye N.
 Gray, James E.
 Graves, Virgil
 Greenwood, Roosevelt
 Grisley, Richard

Hamilton, Mildred
 Hardy, Ollie
 Hardy, Victor
 Harris, David L.
 *Harrison, MacArthur
 Hart, James
 Hart, Stanley
 Harvey, Fletcher
 Hawkins, Ollie M.
 *Hayes, Emerson
 Hemphill, James E.
 Herron, Catherine
 Herron, Geraldine
 Hodges, L. V.
 Holley, Frederick
 Holloway, Glenda
 Holmes, Herbert
 Holmes, Juanita
 Hornsby, Bobbie
 House, Geraldine
 *Houston, Bettye J.
 Howard, Georgia
 Howard, Lottie B.
 Hughes, Bobbie
 Hughes, Gene R.
 *Hundley, Shirley
 Hunt, James E.
 Harris, John W.
 Ingram, Helen
 Jackson, Navine
 Jackson, Ventress A.
 Johnson, aisy
 Johnson, Ever Roof
 Johnson, Franklin
 Johnson, Jesse
 Johnson, Lourine
 Johnson, Raymond
 Johnson, Vertis
 Jones, Johnny C.
 Keys, Lou Ethely
 King, Alice
 Lane, Douglas
 Latiker, Thomas L.
 Leverette, Jimmie
 *Lewis, Robert
 Lofton, Irene
 Lofton, Sarah
 Madison, Shirley
 Madlock, David
 Magee, L. D.
 Magee, Virgil
 Maggitt, Lillie M.
 Martin, Beverly
 Massey, Elizabeth
 Mattox, Velma
 Metcalfe, Hazel
 *Mixon, Minnie P.
 Montgomery, Ernestine
 Morris, Larry D.
 Morton, Albert
 Myers, Eddie
 McAdory, Plas
 McClain, Rufus
 McClellan, Julia
 McCoy, Doretha
 McGee, Inez

1967 GRADUATING CLASS

Abrams, Joan
 Allen, Edward E.

Archie, Bettye J.
 Armstrong, James

McGhee, George
 ***McGrew, Doria Ann
 McKinney, Stella
 **McLaurin, Georgia
 McNair, Ellistene
 Nash, David
 Nichols, George H.
 Nichols, W. J.
 Oliver, Josie
 Orr, Charles
 *Palmer, Rosetta
 *Payne, Geraldine
 Peacock, Levester
 Perkins, Estella
 Peters, Charles R.
 Porter, Ophelia
 Pride, Cordelia
 Pringle, Gardenia
 Ratliff, Belva A.
 Ray, Mary K.
 Redmond, James
 Reid, McArthur
 Rich, Walter
 Richard, Eddie
 Roach, Erma J.
 Roberts, Arthur
 Robinson, Andrew
 Robinson, Audria
 Robinson, Roosevelt
 Rogers, Virgie
 Rose, Julia
 Ross, Gloria
 Ross, Isabella
 Russell, Charles
 Russell, Sherrie E.
 *Sallis, George W.
 Saulsberry, Barbara
 *Seaton, Pearl
 Sellers, Lillian
 Scott, Josephine
 Shaw, Bettye
 Shaw, Jerome
 Simmons, Robert
 Sims, Roger
 Singleton, Anderson
 Skipper, Bernice
 Smiley, Johnny B.
 Smith, Clifton
 Smith, Curtis
 Smith, John
 Smith, Maudell

Smith, Robert E.
 Smith, Vernon
 Spencer, Nancy W.
 Stevens, Margarette
 Stewart, Acie
 Stewart, Estella
 Strong, Evelyn
 Stubbs, Edward
 Survillion, Katherine
 Swayze, James T.
 *Tankson, James
 Tatum, Tommie L.
 Taylor, Edmond O.
 Taylor, Eunice
 Thomas, Hezekiah
 Towers, Mack A.
 *Townsel, Peggie
 Turner, Martha
 *Tutwiler, Shirley
 Tyler, Bertha J.
 Unger, Gloria
 Van, Mamie Ruth
 *Wallace, Nathaniel
 Ward, Mary Ruth
 Ware, Walter L.
 Washington, Allen
 Washington, Betty
 Watson, Earnest
 Watters, Edward
 Watts, George
 Wells, David
 Weston, Rosetta
 Whitaker, Willie
 Whitehead, Marilyn
 Wilkins, Eugene
 Williams, Elizabeth
 Williams, James
 Williams, Joanna L.
 Williams, Levon
 Williams, Lucille
 Williams, Minnie
 Williams, Robert
 Williams, Ruthie
 *Williams, Victoria
 Willis, Izola
 Wilson, Carolyn
 Winifield, Claudette
 Woodard, Bobbie
 Woodley, Charlie
 Wright, Billy

Brooks, Archie L.
 Brooks, Irene
 Bronner, Mae Lillian
 Brown, Calvin
 Brown, Charles
 Brown, Gotrea, Lee
 **Brown, Lula B.
 *Brown, Willie
 *Buckley, Helen Delores
 Burks, Johnnie B.
 Byrd, Carey
 *Caldwell, Betty Jean
 Campbell, Theodore
 Roosevelt
 Campbell, Thessie Ree
 Carlize, John Ranger
 Carter, Frank Perry
 Carter, Luella
 *Cherry, Ethel Lee
 *Cherry, Willy Edward
 Clark, Billy Gene
 Clark, William Donald
 Clark, Willie, Jr.
 Clay, Flora
 Cocroft, David Winfred
 Coleman, Geneva
 Coleman, Jerome
 Coleman, Willie L.
 *Collier, Nayland
 Colins, Charles Wilson
 Collins, Ivory Jean
 Conley, Aldrich
 Conway, Helen Eugene
 Cowan, Peggie Ann
 Cox, James Andrew
 Cox, James E.
 Crawford, Eugene
 Criss, Helen Geanette
 ***Cross, Sharon Hester
 Davis, James J.
 Davis, Talmadge, Jr.
 Dodson, Arminuar
 *Dorsey, Sadie
 Douglas, JJJesse
 *Dowd, Jeffrie T.
 Dowden, Emily Jean
 Doyle, Joyce Ann
 Ealy, Grecie
 Edwards, Thomas Earl
 Eley, Richard Wallace
 Ellis, Barbara Ann
 Everett, Earl
 Exx, Gladys Marie
 Farmer, Roy Adam
 Fenderson, Hester
 Ferrell, Curais Ray
 Flenorl, Rosa Ann
 Flowers, Paul
 Fonville, Ida Mae
 Freeman, Thomas
 Furdge, Dorothy
 Gales, Thomas Edward
 *Galmore, David Van
 *Gardner, Ella Ruth
 *Gardner, Joe C.
 Garner, Sonny

*Gates, Arthur
 Gill, George
 Glover, Linda Faye
 Gins, Ralph Sanders
 Grace, Eddie
 †Greene, Riley
 Griffin, Mack Henry
 Hall, Alberta
 Hall, John Louis
 Hall, Vertis E.
 Harper, Roosevelt
 Harrell, Bertha Ella
 *Harris, Joyce Yovonnie
 Harris, Lawrence Clifton
 Hatch, Linda Lovonne
 Harvey, Cherise Wilson
 Hayes, Geraldine
 Hayes, Shelley B.
 Haynes, Willie George
 Hence, Catherine
 Hill, Jessie Mae
 Hill, Lilly Patricia
 Hodges, James
 Horton, Jerry
 *Houston, Jessie James
 *Howard, Eddy Mae
 Howell Henry Alfred
 Hughes Johnny
 Hughes, Maggie
 Hunter, Odessa
 Jackson, Darrethaer Mae
 Jackson, Melvin
 *Jacobs, Joyce Inez
 James, Catherine
 Johnson, Lee Morris
 Johnson, Ora Lee
 Johnson, Paulene
 Jones, Annie Bell
 Jones, Charlene
 Jones, Mae Sue
 Jordan, McClinton
 *Jude, Willie Lee
 Kelly, Essie Mae
 Kennedy, Willie James
 Klilum, Earnest
 Kimble, Harrison
 Knox, Harrison
 Lambert, Earnestine
 Landfair, Joseph
 Latham, Avon
 Latham, Lloyd Arthur
 Latiker, Joe Louis
 Latiker, Willie Frank
 Lee, Roosevelt, Jr.
 Lenard, Melvin
 Lester, Nellie Mae
 Lewers, Jeanie Mae
 Lewis, Betty Ruth
 Brown
 Lewis, Mary Ruth
 Lewis, Tommie Lee
 Liggins, Hebie Faye
 Lipsey, Mamie
 Lipsey, Sarah
 Lofton, Jimmy Lee
 Lofton, John Henery

1968 GRADUATING CLASS

*Allen, Marion
 Amercon, Esie
 Anderson, Esteria
 Anderson, Percy
 Anderson, Samuel
 Armon, Pauline
 Armstead, Jewel
 Armstrong, Willie
 *Artis, Estella
 Bailey, Curley James
 †Barr, Martha

Beasley, Bernice
 Bell, Claudine Parker
 Bell, Erma Jean
 Bell, McArthur
 Benett, C. B.
 **Bennett, Loretta
 Bolden, James
 Booth, Joan
 Boyd, Elsie Rine
 Boyd, Lula Windless
 Bradbery, Delphine

- Lofton, Willie Mae
 Long, Carl S.
 Long, Dorothy
 Lowe, Nathaniel
 Martin, Denotee
 Martin, Marsha L.
 *Maxwell, Louis
 May, Essie Lee
 Mercer, Clarence W.
 Miller, Geraldine
 Montgomery, Eddy M.
 Myres, Larry
 McClain, Vernon
 McCoy, Mary Aljean
 McCray, Delores
 *McCray, Shirley
 **McCray, Maggie
 2 McGhee, Arlee
 Mcinnis, Gwendolyn
 McKenzie, Minnie J.
 McKinney, Bobby Jean
 McKinney, Ella Vernta
 McKnight, Jimmie
 McMullen, Mary L.
 Nash, Annie Wess
 Nicholass, Cornelious
 Nicholass, Betty Ruth
 Pates, James Leric
 Pearman, Leola
 Peterson, W. C.
 Peterson, Willie France
 Phipps, Charles
 Phipps, Doris Delight
 Polk, Irene
 *Potts, James Earl
 *Powell, Thelma
 Price, Emma Jean
 Pride, William
 Pryor, Vivian
 Ray, James Len
 *Raine, Lora Etta
 Redeemer, Alonzo
 Reed, Andrew
 Reed, Odessia B.
 *Richardson, Beverly Jean
 Richardson, Jo-An
 Roach, Willie
 Roundtree, Barbara
 Rush, Joseph T.
 Sanders, Louvenia
 Sculark, Augusta Allison
 Scullark, Stella Louise
 Scurlark, Nathaniel
- Shelton, Annie Laura
 Simmons, Dave Brown
 **Simpson, Fannie Mae
 Sims, Henry Earl
 Sims, Marnail
 Sledge, Effie Jean
 Skipper, Douglas
 *Smith, Donald Edward
 Smith, Jeanette
 Smith, William Monroe
 Stanford, Harry Earl
 Stanford, Paulette
 *Stewart, Lillian Arnell
 Storey, Cynthia
 Survillion, Mary
 Sykes, Ray
 *Taylor, Ronnie Lee
 Thomas, Joe Lee
 Thomas, Luther
 Thoma, Winfred
 Tisdale, Lonnie
 Tuckson, Betty Jean
 Turner, Benjamin
 Turner, Myra Jean
 Tyler, Appolone
 Vaughan, Willie Ira
 Wadley, Robert Gene
 Ware, Lowanda
 Watkins, James Van
 *Washington, Leon
 Washington, William
 Webb, John
 Westbrooks, Earnestine
 *Westbrooks, Lela Mae
 White, Charles Edward
 *White, Pearl Moe
 Whithers, Earnest Lee
 **Whitehead, Annie Mae
 Whitehead, Sarah Dell
 Whitfield, Albert
 Whittington, Ossie Lee
 Wilkins, Frank
 Willis, Geneva Sharon
 *Willis Mary Dean
 Williams, Betty J.
 Williams, Bettye J.
 Williams, Maudy
 Woodtrd, Louis
 *Woods, Mary Ellis
 Woulard, Fred Arsbey
 Wright, Willie
 Young, Mary Louise
- Brooks, Mary
 Brooks, Pastella
 Brown, Birdia Robinson
 *Brown, Cathalean
 Brown, Majorie
 Brown, Mary E.
 Brown, Nettie
 *Brown, Woodrow
 Bryant, Ethel
 *Bryant, Joyce M.
 Buckley, Ella Mae
 **Burton, Robert
 Burton, Robert
 Burton, Rosie L.
 *Calvin, John
 Campbell, Clarence
 Campbell, Tommie
 Carter, Christine M.
 *Carter, Earnestine
 Carver, Clinton
 Catchings, Delores
 *Chapman, Eevelyn
 Chapman, Lee Walter
 Clay, Anita Joyce
 Clark Aaron
 Clemons, Birdia
 *Collier, Mary Ellen
 Collins, Ernestine
 Collins, Udean
 Cooks, Walter
 Cooper, Catherine
 *Casey, Viola
 Cotton, Bennie E.
 *Cotton, Jacqueline
 1 Crowell, John
 *Cummings, Harry T.
 *Daily, Linda
 Davidson, Martha J.
 Davis Boyce
 Davis, Ethelean
 **Davis, oel J.
 Davis, Ruby
 Delaney, Bobbie Jean
 *Dixon, Joyce Ann
 Dixon, Willie Lee, Jr.
 Done, Willie James
 Douglas, Randall
 *Dowd, Mary Louise
 Draper, Areatha
 *Driver, Yvonne
 Eason, Ida
 Eastwood, Pearlina
 *Edwards, Lonnie
 Edwards, Melvin
 Ellis, John W. Jr.
 Ellis, Diane D.
 *Eloby, Julius M.
 Evans, Tot Faye
 Fair, Lois D.
 Farmer, Bobby
 Fleming, George
 Foxx, James
 *Frazier, Hattie
 Frizell, Chardie
 Fulton, Beverly Ann
 Funches, Jerry Dean
- Garland, Robbie Cene
 Genus, Susie
 1 German, Irene
 *German, Ruby
 Gill, Alderine
 *Gordon, Robert Lee
 *Graves, Cora Mae
 Gray, Perry
 *Gray, Valorie
 Grayson, Beatrice
 Griffin, Bessie
 *Gunn, Hansell
 Hall, Deloise
 2 Hardman, Earnestine
 Hardman, William
 *Harper, Delores
 Harris, Clara
 Harris, Mary Frances
 Harris, Milray
 Harris, Odessa
 Harris, Philbert
 Hayes, L. C.
 Haynes, Oscar
 Hearn, Homell Har
 Henderson, Earnestine
 Henderson, Levi
 1 Henderson, Thelma
 *Hentz, Joyce V.
 **Hentz, Shelly
 *Hill, Dorothy J.
 Hill, Perry
 *Hill, Stella
 *Hinton, Ella Mae
 *Hinton, Jerry
 *Hodges, Dennis W.
 Hodges, Onedia
 Holmes, John H.
 Holmes, Woodrow, Jr.
 *Hopson, Margaret Jean
 House, Betty
 Howard, Clarence
 Hudson, Bernice
 Hudson, Lucile
 Huggins, Gloria
 Hutchins, Ella B.
 Hutton, Gloria
 Jackson, Elvie
 Jackson, Johnnie
 **Jackson, Theodora
 Jamison, John Henry
 Jenkins, Katrina
 **Johnson, Charles M.
 Johnson, Eddie
 Johnson, Ellen D.
 Johnson, Katie B.
 Johnson, Lenton
 Johnson, Omelia
 Johnson, Truman
 *Johnson, Vinson
 Johnson, Walter D.
 *Jones, Alcola
 *Jones, Alfred
 Jones, Bernie M.
 Jones, Earlean
 Jones, Earnestine
 *Jones, Helen Clair

1969 GRADUATING CLASS

- Adams, Leola
 Adams, William
 Allen, Tommie
 Allen, Bertha
 Anderson, David
 Anderson, Elizabeth
 *Armstrong, Emma
 *Bailey, S. T.
 Bardwell, William
- Barnes, Betty Jean
 Bass, Juanita
 Bell, Lawyer L.
 Bell, Mae Francie
 Blaylock, Sylvester
 *Blocker, Carrie Mae
 Booker, Albert
 Booker, Lewis S.
 *Booker, Walter

- Jones, James
Jones, Lester
*Jones, Mary Lee
*Jordan, Ben A.
Jordan, Loretta
Kellum, Nancy
Kelly, Charles W.
Kemp, Barbara
*Kemp, Calves
Kemp, Curtis
Kent, Charlie T.
Keys, Lou Cinda
***Kinard, Christine
King, Sylvester
Lamar, Ethel
Lee, Earlean
**Lee, Marie
Leflore, Gloria
*Lenard, Ruth
Levy, Cherry
Lewis, James L.
Lewis, Lee David
Lewis, Louise
Lewis, Velma, Lee
Liddell, Robert
**Liggins, Cornelia
2Lofton, Clara Bell
Lofton, Myrtle
Long, Floyd Harrison
Love, Jerry Wayne
Lucas, Maurice
Mabry, Henry
Maiten, Doris Stine
Marshall, Oscar
Maxwell, Leroy
*Mayes, Rosie Dean
*Melton, Frank
Mills, Paul E.
*Mitchell, Doris L.
Mitchell, Dorothy
*Moton, Charlotte
Moton, Cleveland
Mukes, Robert
Mullins, Safronia
Mullins, William E.
**Myatt, Ora Lee
Myers, Leola
McDaniel, Annie M.
*McGee, Rebecca, Olivia
McKinney, Claude
*McLaurin, Jesse A.
McMullen, Ethel
**McPherson, Gorlean
McQueen, Andrew
McWilliams, Robert
Nash, Hezekiah Dean
Nelson, R. D.
Newson, Willie Mae
*Oliver, Florine
Owens, Mildred
Parker, Claudia Lee
Patton, Lonnie
Payton, Minnie
Patterson, Emma
Peace, Della
Peel, Kattie B.
- Peggs, Mildred K.
*Perkins, Shirley
Perry, Annie O.
Peterson, Lydia A.
Pickens, Betty J.
Pittman, Sarah
Poe, Edna Cynthia
*Polk, Nicey Hentz
Price, Ruby J.
*Pulley, Estella Johnson
*Ransom, Louise
Readus, Annie D.
Redfield, Larry
Redmond, Nellie
Richmond, Gloria
*Richmond, Lee R.
Riley, John
Rivers, Percy L.
Robinson, Theodia
*Rogers, Rose
*Ross, Hattie
Rucker, Geraldine
Ruffin, Alexander
2Ruffin, Lillie Jo
Rushing, Leroy
Sallis, Barbara
Sanders, Chardie
Sanford, Earline
Saulsbury, Pauline
Scott, Earnestine
Scott, Ollie Jean
Scott, Robert Lawrence
Scurllark, Cathernie
*Shanks, Warren
Sharp, Bobby Jones
Shaw, George
Shaw, James Earl
Sheaffer, Carnell
Shell, James E.
**Slaughter, Leola
Smart, Catherine
Smith, Barbara
*Smith, Billie Jean
Smith, Geneva
Smith, Hattie
Smith, Katie
Smith, L. B.
*Smith, Louise
*Smith, Thomas Edward
Spain, Rita Joyce
Spanks, Bernice
Spann, Gladys
Spann, Peggy Joyce
Spann, Robert
Spencer, Beatrice
Spencer, W. C.
Stanford, Tommie
Stevenson, Lillie
Stingley, Leatha
Storey, Dorothy
Strong, Charles Ray
Stubbs, Jimmy
*Sumin, Rosie Ray
Taylor, John
Taylor, Melvin
Thomas, Grady
- *Thomas, Hattie
Thomas, Robert
Thornton, Osie L.
*Tillis, Laura Whitehead
Tribble, Estella B.
Truss, Dora Delone
Tuckson, Edna L.
Turner, Delores
Unger, Bennie
Vann, Eugene
Vasser, Elt
Wallace, Laura
Walton, Wardel
Washington, Emmanuel
Washington, Kathern A.
Watson, Lessie
Watson, Tommie Sue
*Webb, Mary
Wesby, Earlean
Whitaker, Vernell
White, Pauline
Wilkerson, Maxine
- Wilkins, Helen
Williams, Arthur
*Willitms, Beulah
Williams, Eddie
*Williams, Fletched
Williams, Freddie
*Williams, Luci Louise
Williams, Minnie
Williams, Ruth
Williams, Sarah Voncile
Williams, Willie
Wilson, Alter
Wilson, Betty Jean
Wilson, Eddie
Wilson, Jean
Wilson, Myrtis
*Winters, Elvin
Winters, Freddie
*Wolfe, Johnny
Woodard, Annie Mae
Woodard, Leslie
Woods, Zelma

ASSOCIATE IN ARTS
1970 GRADUATING CLASS

- Ida Davis Adams
Mary Jane Anderson
William E. Anderson
Arlean Jeanette Arnold
Henry Arnold
Gloria J. Austin
John Howard Ballard
Daisy Bernice Banks
Mary L. Barron
Al Fred Bass
2John Bass
Mattie Balfour
Juanita Bell
**Mary Ann Bennett
*Warner Benson
Milborn Booze
Harry Bradford
2Diane Benet Bridges
Alice Faye Brister
Bennie James Brock, Jr.
Connie B. Brown
Eddie Brown, Jr.
Francine Brown
Hubert Brown
**Otis Buckley
Jennifer Buckner
*Shirley Mae Bugett
Inell Bundley
Martha Ann Burden
*Louise Burton
Shirley Bush
Lena Mae Butler
Joe Willis Butts
Yvinnie Byas
Annie Lee Byrd
Albert Calvin, Jr.
S. C. Cannon
Darnell Carter
**Judy Lanell Carter
- Tommy Carter
Willie Hugh Carter
Helen Ruth Carver
2Leonard Cash
Eddie Childs
Eddie Clemons
Charles Patrick Cole
Betty Lockett Collins
Willie Collins
Donnie Cooper
Ivory Cooper
Evelyn Council
Ann Nell Craft
Hattie Cummings
Beatrice Curtis
*Ruth Davis
Betty Dickson
Betty Jane Dorsey
Mary Doss (Cotton)
Willene Dunn
Mattie Edwards
**Lula Eley
Robert Evans
*Velma Everett
Pearlie Flowers
Riddle Flowers
Margie Ree Floyd
*Dorothy Jean Foster
Gene Fowler
Carrie Jean Freeman
*Olealia Frye
Willie Mae Furdge
*Joyce Garfield
*Helen Jean Garrett
Dorothy Gateway
Earline Gates
Elnora Gilliam
Elisha B. Gipson
Mary L. Gladney

*Rebecca Gossett
 Willie James Gordon
 Lula M. Green
 Margaret Green
 *Bobbie Jean Griffin
 Annie Rose Hamp
 Helen Marie Hampton
 Garry Hardmon
 Brenda Harrington
 Clara Mae Harris
 Diann Harris
 *Sol-Emma Harris
 Edgar E. Harvey
 **Evelyn B. Hearn
 Dorothy A. Henderson
 Mattie P. Herron
 2Molly Herron
 Deloris Hill
 James Holman
 John Sharp Holmes
 John A. House
 Dorothy M. Howard
 L. C. Howard
 Lorenzo Howard
 Ulysses Leroy Howell
 *Billy Joe Hudson
 Felix Hurth
 George Ingram
 Lena M. Iory
 *Armanda Jackson
 Ruby Jackson
 Shelton James
 Maxine Jenkins
 Lillie M. Johns
 Irene L. Johnson
 Jannie Johnson
 Lillie M. Johnson
 Marie Johnson
 *Lynda Johnson
 Zelma Johnson
 Alicia Diane Jones
 Annie O. Jones
 Estell Jones
 Gloria J. Jones
 Walter J. Jones
 Herbert O. King
 Carter M. Kinsey
 Delores Lampkin
 Edward E. Landair
 *Essie J. Langston
 Gloria A. Latiker
 *Climmie Lee
 Clifton Liddell
 **Beverly O. Liggans
 *Vera L. Linzy
 *Betty R. Lloyd
 Hattie P. Lockett
 Freddie Long
 *Milo Love
 *Vera McClellan
 Mardie L. McCray
 D. V. McGee
 Jessie D. McGee
 Cecil M. McGhee
 *Barbara A. Madlock
 2Bertha Maggitt

Marthella Messenge
 *Dorris A. Miller
 1Tommie Miller
 Silas Mills
 Thurman Mitchell
 Florence I. Mohead
 *Patricia Miller
 Johnny Moore
 Lee Bertha Moore
 2Flora B. Mullins
 Alexander Mumford
 Linwood J. Myles
 orothy A. Neal
 Shirley Newkirk
 Willie G. Owens
 Andrew Pates
 Ollie Phipps
 *Doris L. Pointer
 Jimmy E. Pruitt
 *Catherine Redd
 James Reddice
 *Ann E. Roberts
 Millie Roy
 Ida M. Rooks
 Lucille Sallis
 Rosemary Samuels
 Clifton Satterfield
 *Janas Saulsberry
 William H. Seals
 Peolla Selders
 Veronica D. Sheard
 Addye S. Smith
 Anderson Smith
 Carolyn Smith
 Louella Smith
 Annie L. Snerling
 Carrie E. Spencer
 Earlee Stephen
 **Linda Story
 Johnny A. Sturgis
 Nettie A. Sykes
 Catherine Taylor
 Johnny Taylor
 Raif Taylor
 Will Thornton
 Katherine Tigue
 Dorothy M. Tribble
 Joyce Marie Turner
 Sarah Vaughn
 Stanley Vaughn
 Bobbie Jean Walker
 Jessie M. Warren
 *David Washington
 James L. Washington
 Mable H. Washington
 *Larry Jean Webb
 Leroy Webb
 Tommy Webb
 Charles Wells
 Juanita Wesley
 *Gloria White
 Lossie Whitehead
 *Ed Wiggins
 Annie L. Williams
 *Curley B. Williams
 ***Diyonne T. Williams

Ethel M. Williams
 Mary E. Williams
 Venitra Williams
 Betty can Wilson

Mary C. Woodard
 *Dorothy M. Wright
 Oscar Wright
 Charles A. Young

1970 GRADUATING CLASS

ASSOCIATE IN SCIENCE DEGREE

Charles V. Allen	Savannah McDaniel
Dorothy R. Bailey	Dianne Outlaw
Margie L. Ballard	Sadie Mae Pearson
Margie L. Banks	Barbara L. Reed
Stella L. Brown	*Mary J. Rudd
*Gwendolyn S. Burt	E. S. Simmons
Barbara A. Curry	Barbara A. Spann
Willie B. Davis	Cornelious P. Stanton
Roosevelt Grant	*Edgar Earl Taylor
*Albert Harrell	Mary Catherine Toliver
*Lynda W. Jackson	Robert K. Walker
Christine James	Luther Washington
Cynthia Jones	**Pearlie M. Whitley
Chester Knox	Allie J. Wilder
*Emma Jean Lester	Onie W. Williams
Annie Ruth Lewis	Jimmie Lee Hearon

1Completed work Fall Quarter

2Completed work Winter Quarter

***With Highest Honors

**With High Honor

*With Honor

SPECIAL CERTIFICATES

Susie Blackmon

Johnny Dickson

1971 GRADUATES

ASSOCIATE IN ARTS DEGREE

Dorothy J. Allen	**Ethel Carter
*Frankie Mae Allen	Jimmy Carter
Rosie Lee Anderson	Raymond Carter
Rosie Mae Bassett	Annie Mae Chesnut
Ada Bennett	Eva Cole
Rose Mary Billings	Pearlean Cole
Robert Earl Bogan	Calvin Leon Coleman
Ernest Boyd	Dorothy Lee Coleman
Windell Boyd	Joyce Ann Colins
*Jacquelyn Lavon Brady	Carrie Ann Conrod
Mary LaJoyce Brady	Earnestine Cox
Jack Brinson	Mackel Earl Crowder
Elizabeth C. Brown	Eddie Alexander Curtis
Mary Etta Brown	Mary Lee Crumb
Nannie Lee Brown	Clarence Lee Dampier
*Christine Bruce	Catherine Davis
Marck Arthur Butler	**Odessa Oliver Davis
Willie Gene Butts	*Lynda Faye Dodd
Fred Caldwell	*Huston Doty, Jr.
Walter Napoleon	Roy Kenneth Douglas
Campbell	Hellen Ruth Ellis
Geraldine Carter	Louise Fields

Dorothy Jean Ferguson
 Nancy Pearl Fisher
 Leonia Ford
 Will Ford, III
 Jackie Fuller
 Rubydale Fulwiley
 ***Dwilette Dawana
 Gambrell
 Dorothy Jean Gates
 Sallie B. Gates
 Abrilla Gillespie
 Birley Gipson
 *Curtis Granderson
 Lorine Davis
 Dessie Lee Griffin
 Larry Don Griffin
 Vera Hill
 Virgil Hall
 Lizzie Nell Harper
 Peggy Louise Harris
 1Gloria Harrison
 *David E. Herron
 *Minnie E. Hogsett
 Minnie Bell Hodges
 Henritta Horn
 Richard Cleve Horn
 Delores Hornburger
 Tyrone Hunt
 Patricia L. Hunter
 Leroy Jackson
 Mable Jackson
 Lillie Jeanette Jamerson
 Jeanette James
 Michael Jenkins
 Margia D. Jenkins
 Tennie Jenkins
 Clarence Johnson
 *James Earl Johnson
 Lois J. Johnson
 Mary Ann Johnson
 *Pearline Johnson
 Walter Johnson, Jr.
 *Charlean Jones
 Jessie Lee Jones
 Opel Mae Kelly
 Lucy Mae Kinnel
 Ruby Lee Large
 Ida Mae Latham
 Willie Lee, Jr.
 Ruby Lee Liggins
 Shirley Steen Loggins
 Victor Davis McClain
 Barbara Lois McCray

Robert McDaniel
 *Hattie Mae McFarland
 Pearlmae McGee
 Varonica Franc McGee
 Rosie McKay
 *Gene Edward Habry
 Nettie Maggit
 Erma Jean Martin
 Thelma Ruth Martin
 Erma Jean Mason
 Eula B. Miller
 Mary Ann Mitchell
 Mildred Jean Morris
 Johnny Lee Mullins
 Delores Margaret
 Mumford
 Rosie Nash
 Leonard Charles Naylor
 Minnie Lee Neely
 *Glen Rush O'Neal
 Girtha Paylor
 Chris Peacock
 Emma Jean PePpper
 Ruby Lee Perry
 Edward Phillips
 Freadia Mae Pope
 **Jamesetta Powell
 Ola Minyon Powell
 Hazel Scott Price
 Bessie Mae Pryor
 Jessie Mae Quinn
 Mary E. Quinn
 *Mary Catherine Rainey
 Hermoan Reed
 Jeanette Reynolds
 Woodrow Rhea
 Willie Richards, Jr.
 James Robinson, Jr.
 Tommie Lee Robinson
 James Ross
 Annette Rowan
 Robert Rowan
 Lue Gene Rucker
 Jesse James Salter
 LeAn Scarborough
 Melvern Scott
 Mary Scott
 Robert L. Scott
 Mariam Louise Shelton
 James T. Shinal, Jr.
 Shirley Ann Smart
 Aubrey Smith
 Katherine Smith

Lucille Smith
 Sammie Lee Smiley
 Leroy Sonley
 Vera Mae Spencer
 Ernest Bobbie Stanton
 Barbara Ann Stewart
 Albert Stokes, Jr.
 *Lillie B. Sykes
 Murdle Tate
 Eddie Ray Taylor
 Ruth Camille Taylor
 Corine Thomas
 Edward Charles Thomas
 Vaughie Ann Thomas
 Eddie O'Neal Tinson
 2Jennifer Louis Tisdale
 Helen C. Towner
 Nancy Lee Turner
 *James Rufus Unger
 *Carol Walker
 Edward Charles Walker
 Neoma Rose Watters

Alma Webb
 Eldred J. Wells
 2James A. Wells
 Christine Pettis Weston
 Delores Ann Whitney
 Lawrence Quinn
 Wiggins
 Wilma Beatrice Wigley
 Ada Malinda Williams
 Annie Lee Williams
 James Edward Williams
 Leon Williams
 Patsy Tillmon Williams
 Ronald Lynn Williams
 Alvin Davis Williamson
 Laymon Williamson
 Melvin Willis
 Barbara L. Windless
 Ted Woods
 *Mattie Bee Young
 Maldon Jean Young
 Zenolia Hayes

ASSOCIATE IN SCIENCE DEGREE

*George L. Baker	Betty Jean Love
Arthur L. Banks	Don Milton Lucas
Edith Lynell Barnes	Jeffery McIntyre
*James Beal, Jr.	Frank D. Melvin
*Mildred Billington	*Henry Nix
Jerry Lee Bonner	Curtis Moore
1Patricia Burnside	James C. Moore
Woodrow Cole, Jr.	Tommy Lee Robinson,
William Howard Davis	Jr.
Clifton Edwards	**Dessie James Seaton
Johnny Harrell	James Walter Sorrell
Gloria Henson	Ernest Bobbie Stanton
**Catherine Hogan	1Carolyn M. Talley
Robert Hudson, Jr.	George Lee Washington
Percy Johnson, Jr.	James Washington
James Earl Lewis	Willie Lee Washington
Frank J. Logan	John Earl Williams

SPECIAL CERTIFICATES

James Expose Jerry Givens

1Completed work Fall Quarter
 2Completed work Winter Quarter
 ***With Highest Honors
 **With High Honor
 *With Honor



DIRECTION FOR CORRESPONDENCE AND FURTHER INFORMATION

About applications for admission, evaluation of transcripts, (transfer students), college catalog, and transcript of records, write or talk to the **REGISTRAR**, Coahoma Junior College, Main Academic Building, Route 1, Box 616, Clarksdale, Mississippi, 38614.

About matters of deposits, payments and fees (make all checks and money orders payable to Coahoma Junior College), and veterans benefits, write or call at the office of the **BUSINESS MANAGER**, Coahoma Junior College, Business Office, Route 1, Box 616, Clarksdale, Mississippi, 38614.

About matters of scholarships, student aid, student employment, National Defense Student Loans, write or talk to the

DIRECTOR OF FINANCIAL AIDS, Coahoma Junior College, Business Office, Route 1, Box 616, Clarksdale, Mississippi.

About alumni affairs write or talk to the **DIRECTOR OF PERSONNEL**, Coahoma Junior College, Main Academic Building, Route 1, Box 616, Clarksdale, Mississippi, 38614.

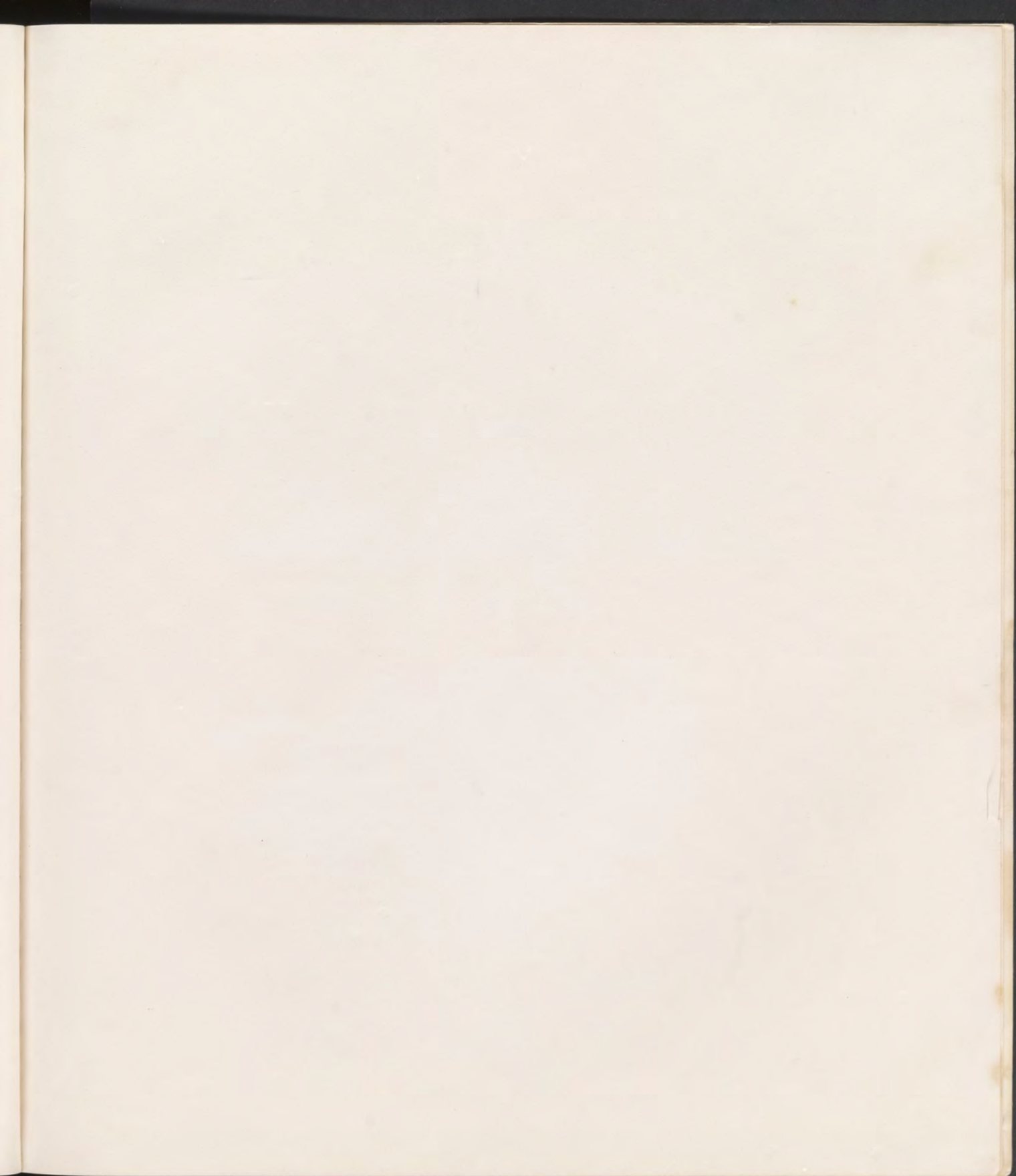
About matters concerning athletics, write **DIRECTOR OF ATHLETICS**, Coahoma Junior College, Route 1, Box 616, Clarksdale, Mississippi, 38614.

About matters of housing and welfare of student write or talk to the

DEAN OF MEN, Men's Dormitory or **DEAN OF WOMEN**, Women's Dormitory, Coahoma Junior College, Route 1, Box 616, Clarksdale, Mississippi, 38614.

INDEX

Absences	10	High School Extra and Intra	
Academic Requirements and Regulations	8	Curricular Activities	38
Accreditation	3	Honors Day	4
Administration and Faculty	ii	Library	3
Admissions	8	Mathematics Curriculum	19
Alumni Association	3	Mathematics Course Descriptions	26
Art Curriculum	17	Music	24
Art Course Descriptions	22	National Defense Student Loan	6
Athletics	14	Orientation	12
Attendance	10	Philosophy and Objectives	2
Awards and Prizes	4	Probation	10
Band	15	Public Relations	3
Books and Supplies	6	Registration	9
Business Education Curriculum	17	Registration, Change of	10
Business Education Course Description	23	Religious Life	13
Calendar	1	Requirements for Graduation	9
Campus Residence	13	Scholarship	9
Certification Requirements	23	Science Curriculum	19
Choir	15	Science Course Descriptions	27
Clubs	14	Social Life	13
Coahoman	15	Social Science Curriculum	20
Community Activities and Service	4	Social Science Course Descriptions	29
Credit (Units)	9	Student Activities and Organizations	13
Curricula Notices	17	Student Council	15
Divisions of School	2	Student Handbook	12
Dramatics	14	Student Health Service	13
English Curriculum	18	Student Life and Services	12
English Course Descriptions	24	Student Regulations	12
Evening School	3	Teacher Education — Elementary	30
Examinations and Tests	11	Secondary	30
Fees and Expenses	4	Terminal Functions	2
Follow-up and Placement	3	Veterans, Information	15
Forum	15	Vocational-Technical Education	31
French	25	Philosophy	20
General Education	17	Building Construction Technology	
Grades and Honor Points	10	Curriculum	21
Grading System, High School	10	Drafting and Design Technology Curriculum	21
Graduates of Coahoma Junior College	39	Electronics Technology Curriculum	21
Graduation Requirements	9	Vocational-Technical Education	
Historical Sketch	2	Course Descriptions	31
Health and Physical Education Curriculum	18	Business Education — Secretarial Science	
Health and Physical Education		Course Descriptions	23
Course Descriptions	25	Withdrawals	10
High School Division	36	Work Aid	7
High School Curriculum	36	Work Load	9
High School General Information	38		



[The text on this page is extremely faint and illegible. It appears to be a list or index of names and titles, possibly arranged in two columns. The text is too light to transcribe accurately.]

CALENDAR

1887

Month	Days	Notes
Jan	31	
Feb	28	
Mar	31	
Apr	30	
May	31	
Jun	30	
Jul	31	
Aug	31	
Sep	30	
Oct	31	
Nov	30	
Dec	31	

Month	Days	Notes
Jan	31	
Feb	28	
Mar	31	
Apr	30	
May	31	
Jun	30	
Jul	31	
Aug	31	
Sep	30	
Oct	31	
Nov	30	
Dec	31	



1 9 7 1

JANUARY							FEBRUARY							MARCH							APRIL						
S	M	T	W	T	F	S	S	M	T	W	T	F	S	S	M	T	W	T	F	S	S	M	T	W	T	F	S
					1	2	1	2	3	4	5	6	1	2	3	4	5	6	1	2	3	4	5	6	7		
3	4	5	6	7	8	9	7	8	9	10	11	12	13	7	8	9	10	11	12	13	4	5	6	7	8	9	10
10	11	12	13	14	15	16	14	15	16	17	18	19	20	14	15	16	17	18	19	20	11	12	13	14	15	16	17
17	18	19	20	21	22	23	21	22	23	24	25	26	27	21	22	23	24	25	26	27	18	19	20	21	22	23	24
24	25	26	27	28	29	30	28							28	29	30	31				25	26	27	28	29	30	
31																											
MAY							JUNE							JULY							AUGUST						
S	M	T	W	T	F	S	S	M	T	W	T	F	S	S	M	T	W	T	F	S	S	M	T	W	T	F	S
						1	1	2	3	4	5	1	2	3	4	5	1	2	3	4	5	6	7				
2	3	4	5	6	7	8	6	7	8	9	10	11	12	4	5	6	7	8	9	10	8	9	10	11	12	13	14
9	10	11	12	13	14	15	13	14	15	16	17	18	19	11	12	13	14	15	16	17	15	16	17	18	19	20	21
16	17	18	19	20	21	22	20	21	22	23	24	25	26	18	19	20	21	22	23	24	22	23	24	25	26	27	28
23	24	25	26	27	28	29	27	28	29	30				25	26	27	28	29	30	31	29	30	31				
30	31																										
SEPTEMBER							OCTOBER							NOVEMBER							DECEMBER						
S	M	T	W	T	F	S	S	M	T	W	T	F	S	S	M	T	W	T	F	S	S	M	T	W	T	F	S
			1	2	3	4					1	2	1	2	3	4	5	6				1	2	3	4		
5	6	7	8	9	10	11	3	4	5	6	7	8	9	7	8	9	10	11	12	13	5	6	7	8	9	10	11
12	13	14	15	16	17	18	10	11	12	13	14	15	16	14	15	16	17	18	19	20	12	13	14	15	16	17	18
19	20	21	22	23	24	25	17	18	19	20	21	22	23	21	22	23	24	25	26	27	19	20	21	22	23	24	25
26	27	28	29	30			24	25	26	27	28	29	30	28	29	30					26	27	28	29	30	31	
							31																				

1 9 7 2

JANUARY							FEBRUARY							MARCH							APRIL						
S	M	T	W	T	F	S	S	M	T	W	T	F	S	S	M	T	W	T	F	S	S	M	T	W	T	F	S
						1	1	2	3	4	5	1	2	3	4	5	6	1	2	3	4	5	6	7			
2	3	4	5	6	7	8	6	7	8	9	10	11	12	5	6	7	8	9	10	11	2	3	4	5	6	7	8
9	10	11	12	13	14	15	13	14	15	16	17	18	19	12	13	14	15	16	17	18	9	10	11	12	13	14	15
16	17	18	19	20	21	22	20	21	22	23	24	25	26	19	20	21	22	23	24	25	16	17	18	19	20	21	22
23	24	25	26	27	28	29	27	28	29					26	27	28	29	30	31	23	24	25	26	27	28	29	
30	31																				30						
MAY							JUNE							JULY							AUGUST						
S	M	T	W	T	F	S	S	M	T	W	T	F	S	S	M	T	W	T	F	S	S	M	T	W	T	F	S
						1	1	2	3	4	5	1	2	3	4	5	1	2	3	4	5	6	7				
7	8	9	10	11	12	13	4	5	6	7	8	9	10	2	3	4	5	6	7	8	6	7	8	9	10	11	12
14	15	16	17	18	19	20	11	12	13	14	15	16	17	9	10	11	12	13	14	15	13	14	15	16	17	18	19
21	22	23	24	25	26	27	18	19	20	21	22	23	24	16	17	18	19	20	21	22	20	21	22	23	24	25	26
28	29	30	31				25	26	27	28	29	30	23	24	25	26	27	28	29	27	28	29	30	31			
														30	31												
SEPTEMBER							OCTOBER							NOVEMBER							DECEMBER						
S	M	T	W	T	F	S	S	M	T	W	T	F	S	S	M	T	W	T	F	S	S	M	T	W	T	F	S
						1	1	2	3	4	5	6	7	1	2	3	4	5	6				1	2	3	4	
3	4	5	6	7	8	9	8	9	10	11	12	13	14	5	6	7	8	9	10	11	3	4	5	6	7	8	9
10	11	12	13	14	15	16	15	16	17	18	19	20	21	12	13	14	15	16	17	18	10	11	12	13	14	15	16
17	18	19	20	21	22	23	22	23	24	25	26	27	28	19	20	21	22	23	24	25	17	18	19	20	21	22	23
24	25	26	27	28	29	30	29	30	31					26	27	28	29	30			24	25	26	27	28	29	30
																					31						

