



Weeks 2-3 Global Tropics Hazards Outlook

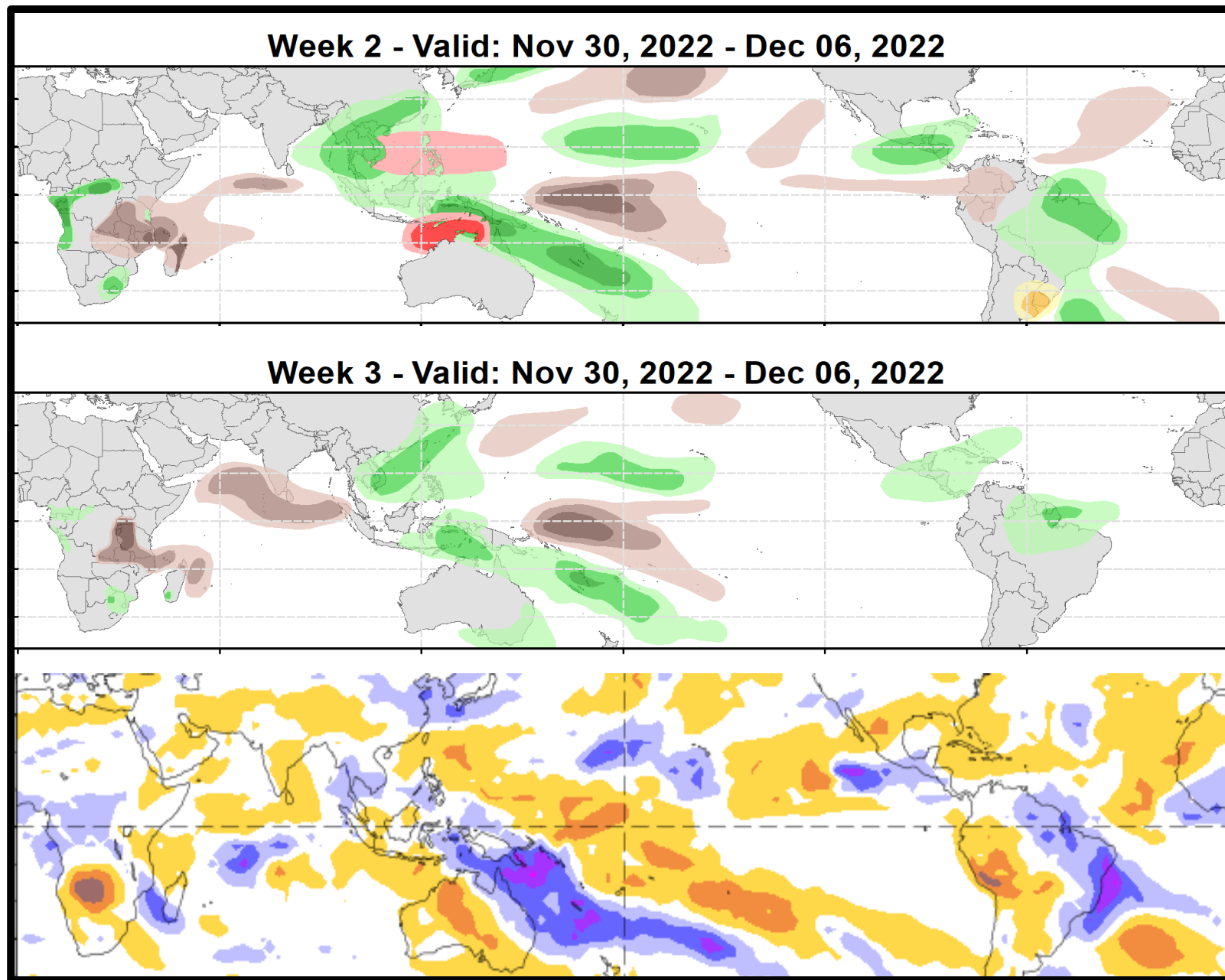
12/6/2022

Brad Pugh

NWS / NCEP / Climate Prediction Center

Outlook Review: TC development & anomalous precipitation during the past week

No tropical cyclones formed during the past week, consistent with the suppressed phase of the MJO over the Eastern Hemisphere



Synopsis of Climate Modes:

ENSO: (Nov 10, 2022 Update) *next update on Thursday, Dec 8th*

- ENSO Alert System Status: [La Niña Advisory](#)
- La Niña is expected to continue, with chances for La Niña gradually decreasing from 76% in the coming season to 57% of ENSO-neutral during Feb-Apr 2022-23.

MJO and other subseasonal tropical variability:

- Following the strongest MJO in months during November, the MJO began to weaken at the beginning of December.
- A remnant MJO signal is expected to propagate eastward from the Indian Ocean to the West Pacific during the next two weeks.
- Therefore, conditions are likely to be more favorable for tropical cyclone development over the Indian Ocean basin through week-2.

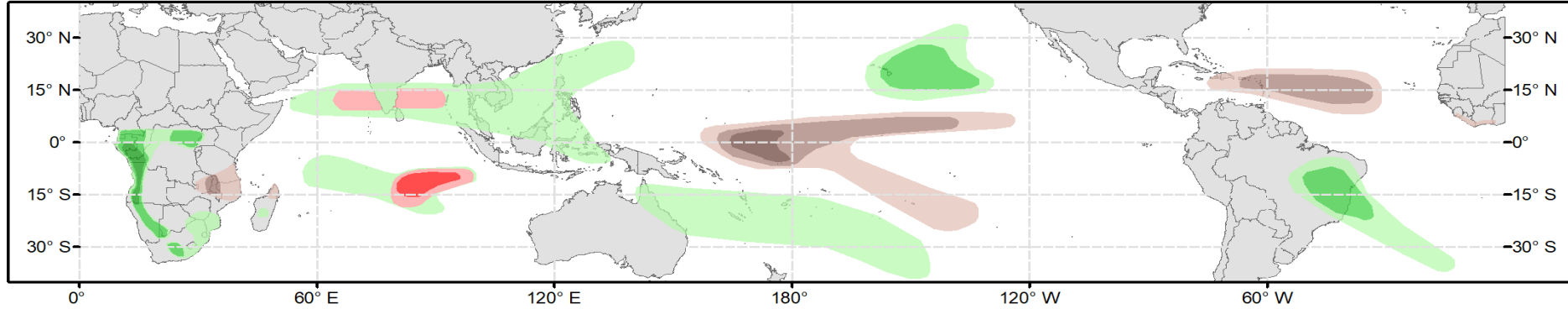
GTH Outlook:



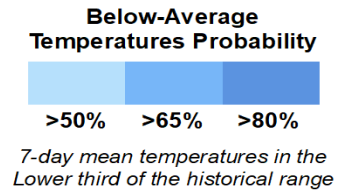
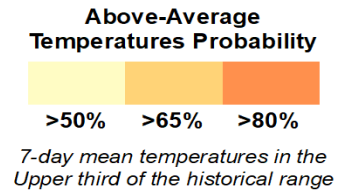
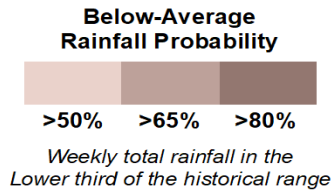
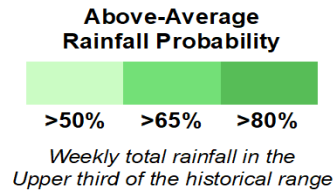
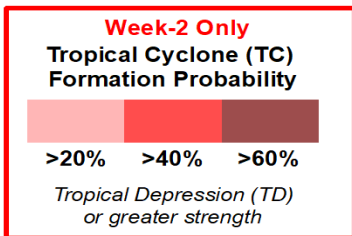
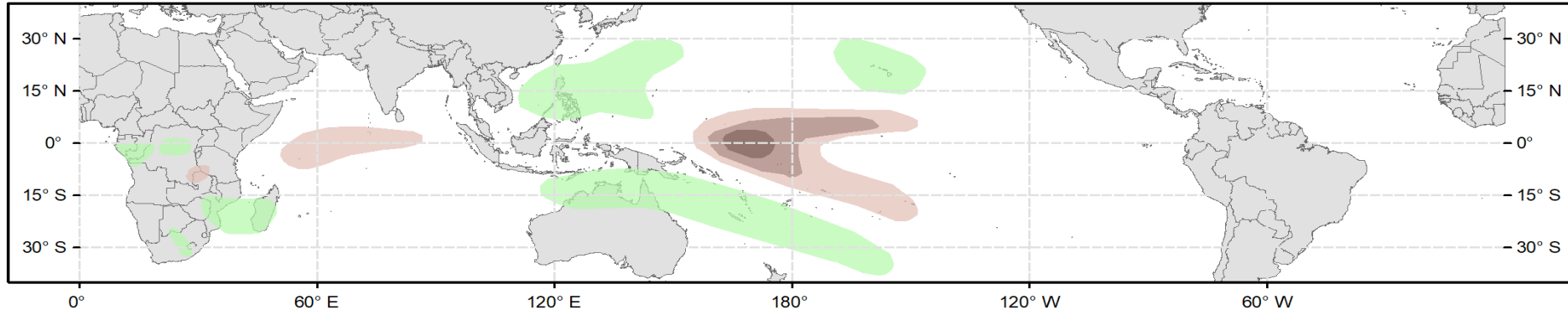
Global Tropics Hazards Outlook Climate Prediction Center



Week 2 - Valid: Dec 14, 2022 - Dec 20, 2022



Week 3 - Valid: Dec 21, 2022 - Dec 27, 2022

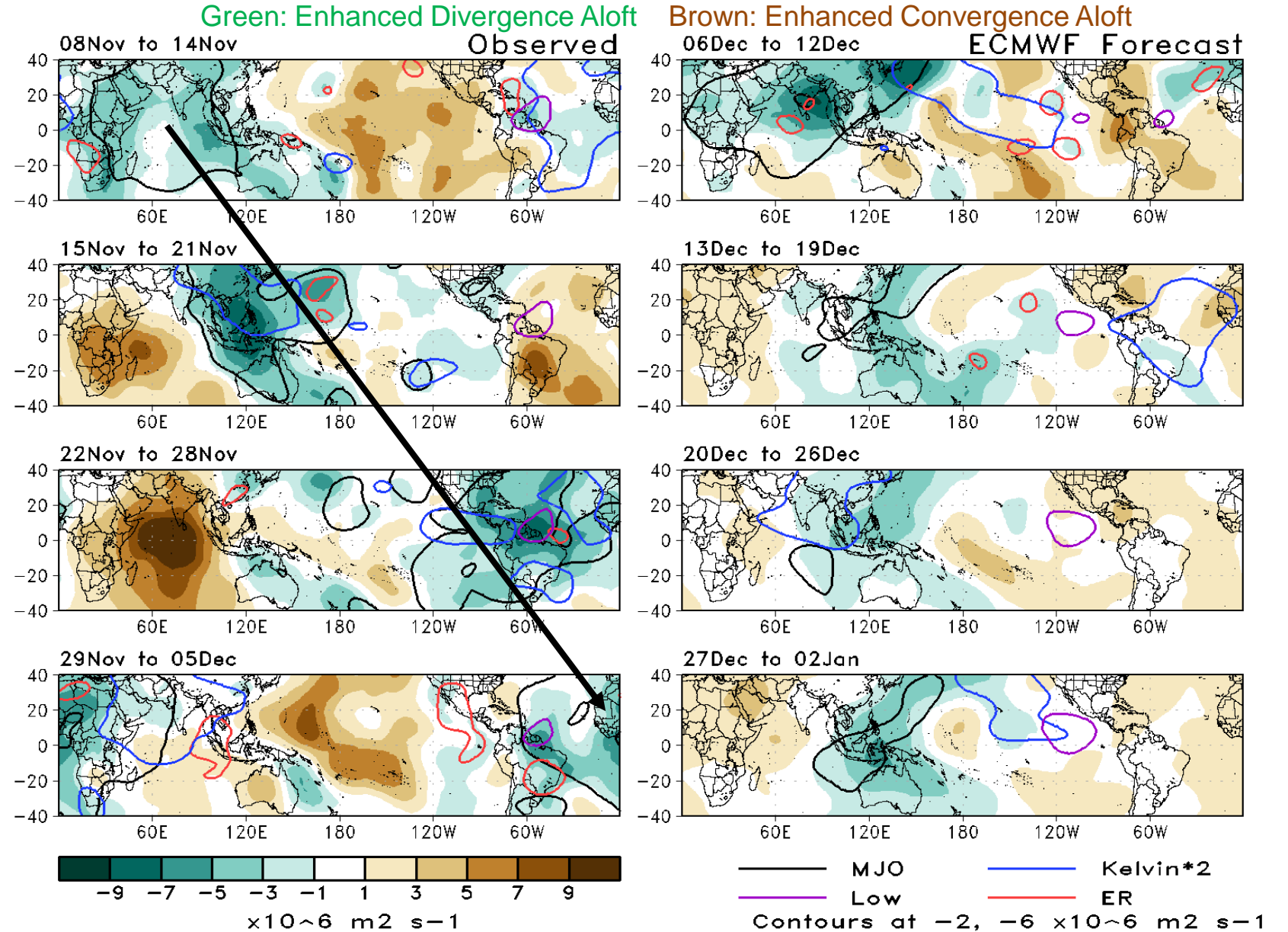


Issued: 12/06/2022
Forecaster: Pugh

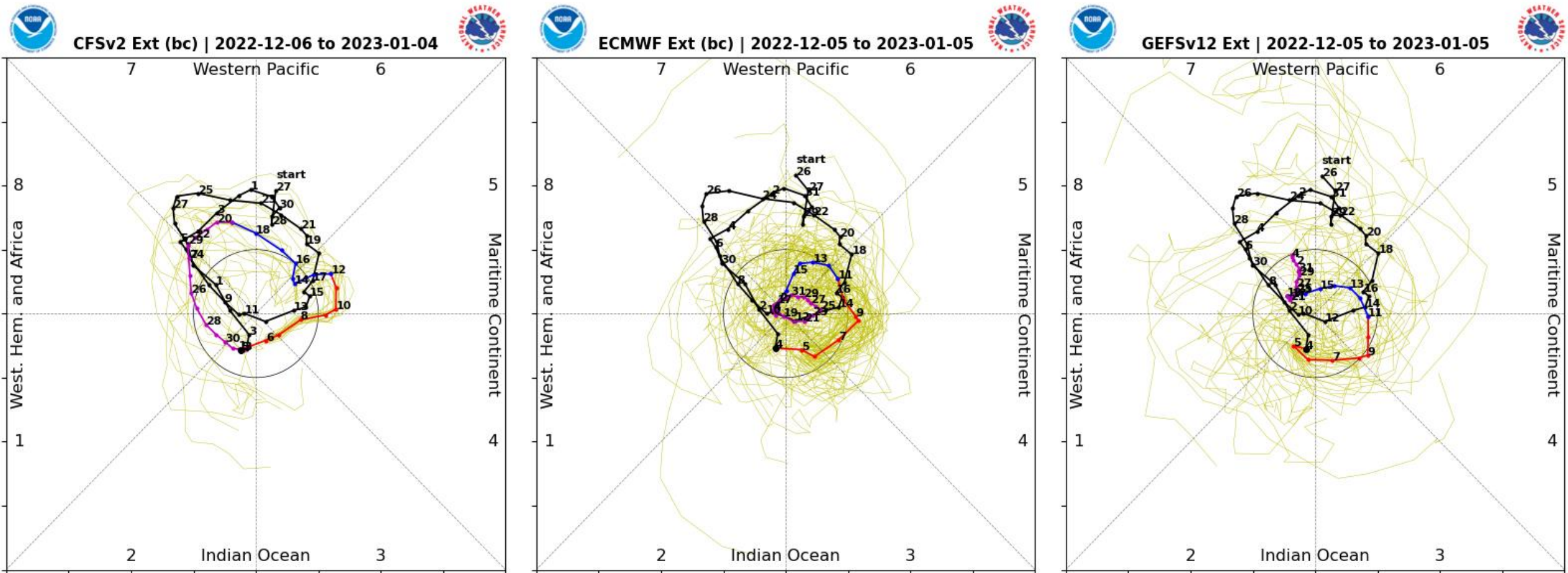
This product is updated once per week and targets broad scale conditions integrated over a 7-day period for US interests only. Consult your local responsible forecast agency.

200-hPa Velocity Potential Anomaly Maps:

- Eastward propagation of the MJO enhanced phase during November.
- Weeks 1 and 2: continued eastward propagation to the West Pacific.
- Week 3: more stationary pattern emerges driven by La Nina



RMM Index Observations & Forecasts:

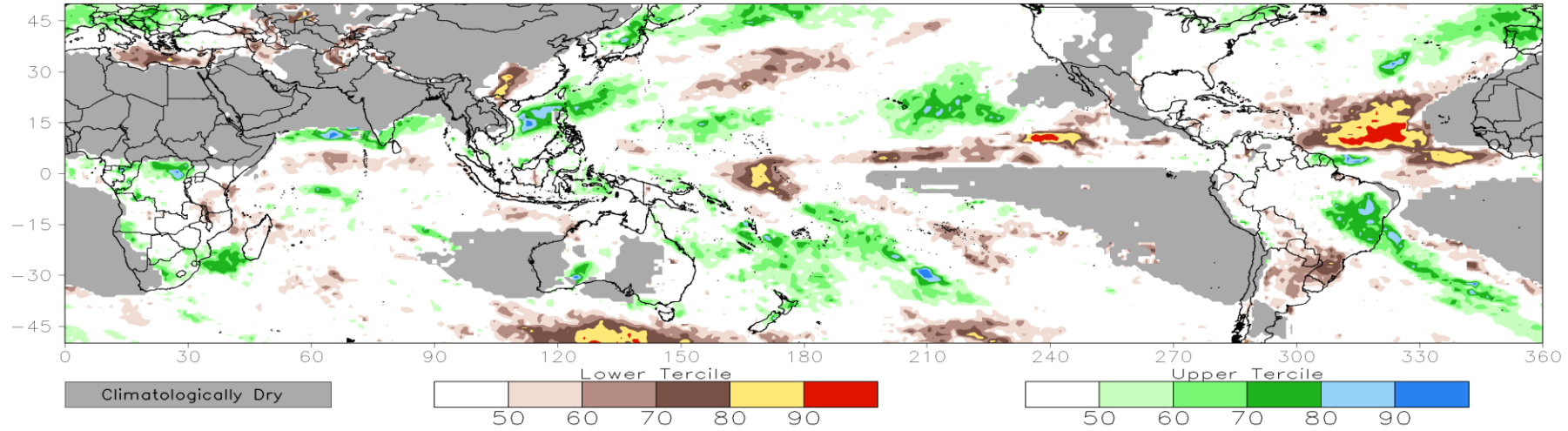


- CFS model is bullish on a continuation of the MJO into the beginning of the New Year.
- Very large spread among the ECMWF and GFS ensemble members.

Consolidated Probabilistic Precipitation: Weeks 2 & 3

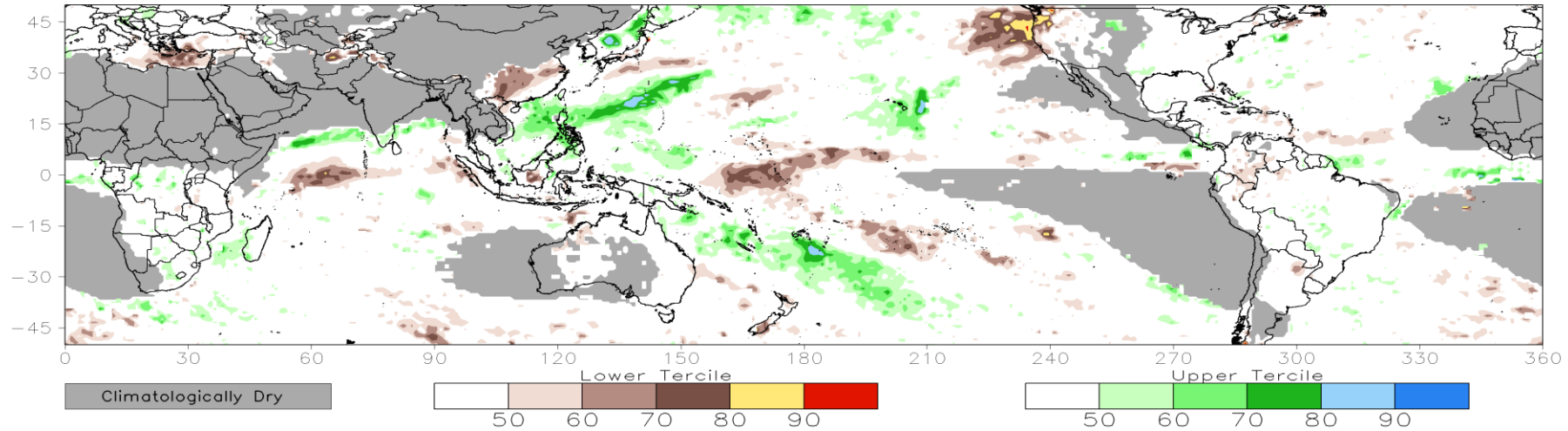
CONS 00z: Week2 Probability for Total Rainfall Below(Above) Lower(Upper) Tercile (%)

Valid: 14Dec2022–20Dec2022

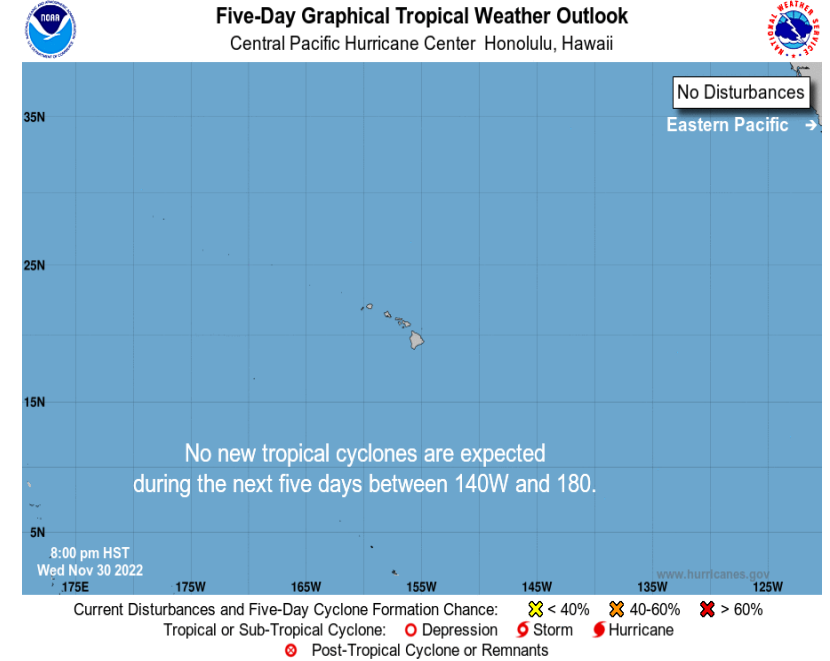
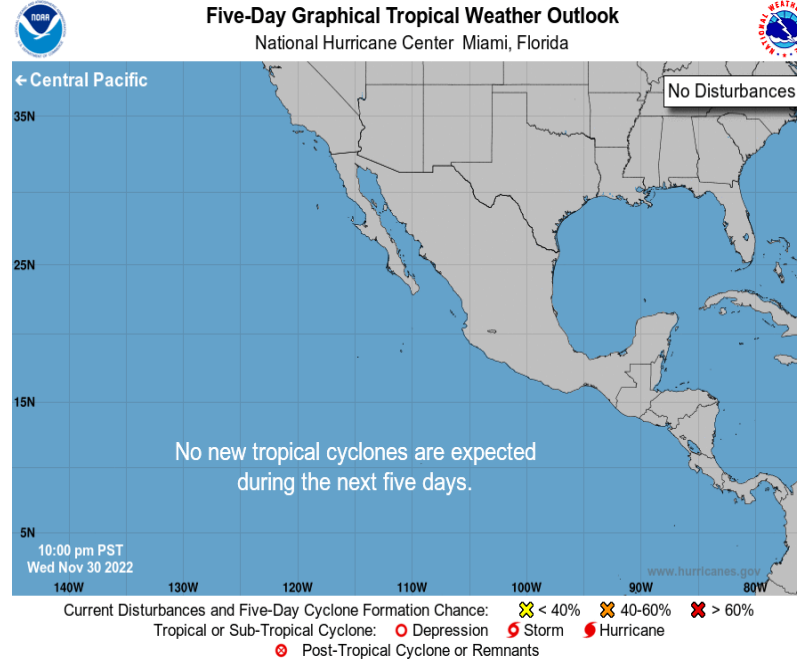
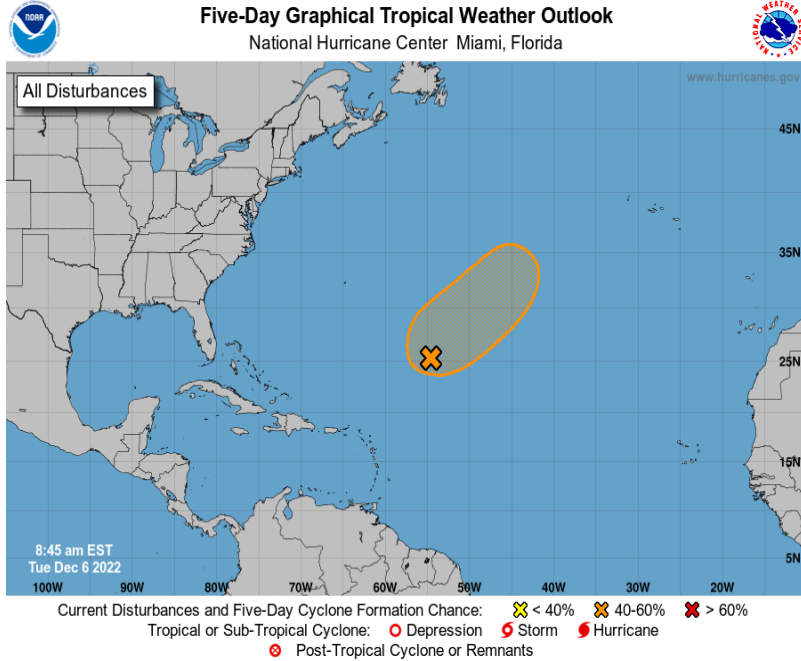


CONS 00z: Week3 Probability for Total Rainfall Below(Above) Lower(Upper) Tercile (%)

Valid: 21Dec2022–27Dec2022



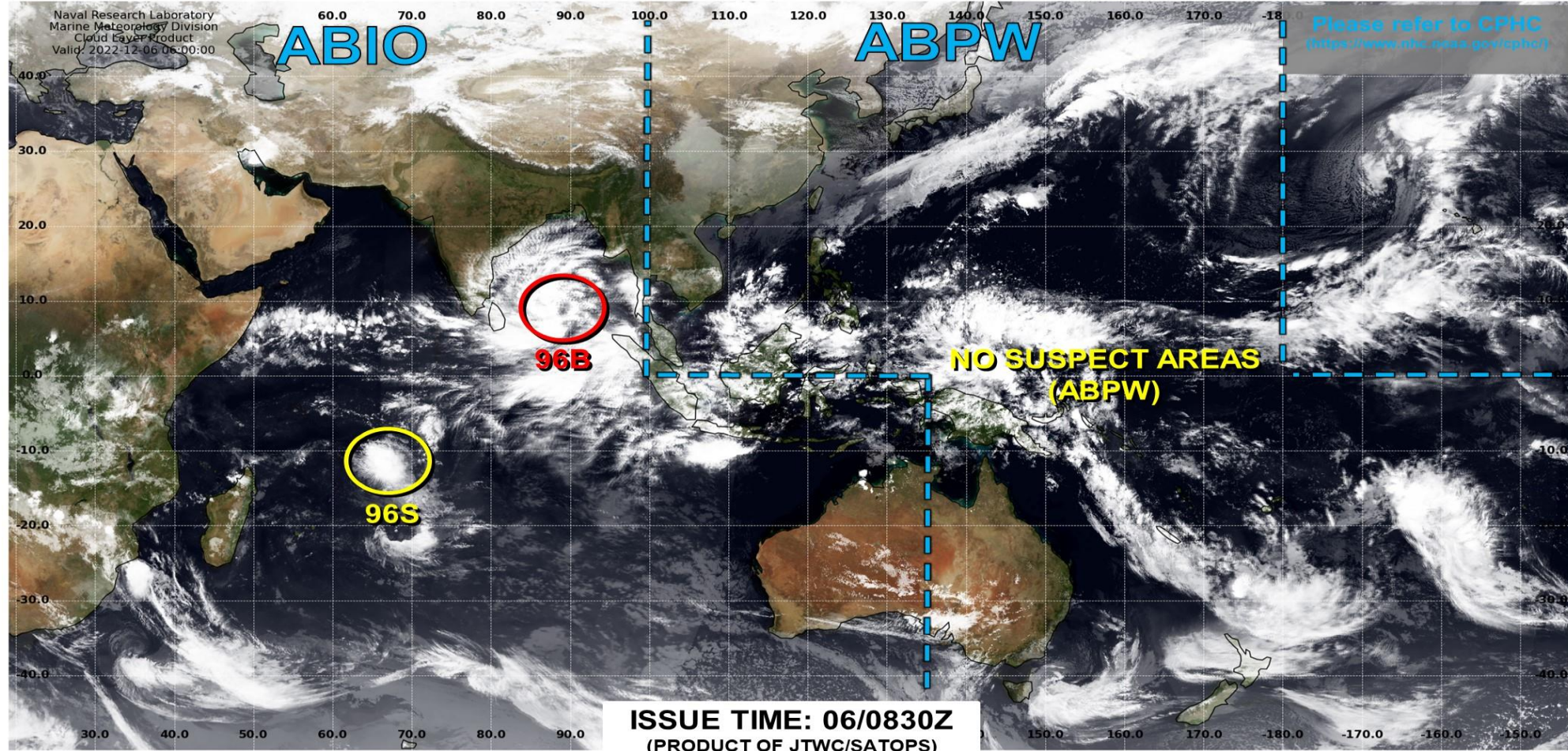
Tropical Cyclone Monitoring/Forecast: NHC



Tropical Cyclone Monitoring/Forecast: JTWC



JOINT TYPHOON WARNING CENTER



LOW TC development unlikely within 24 hours



MEDIUM TC development likely, but expected to occur beyond 24 hours



HIGH TC development likely within 24 hours (Reference TCFA)



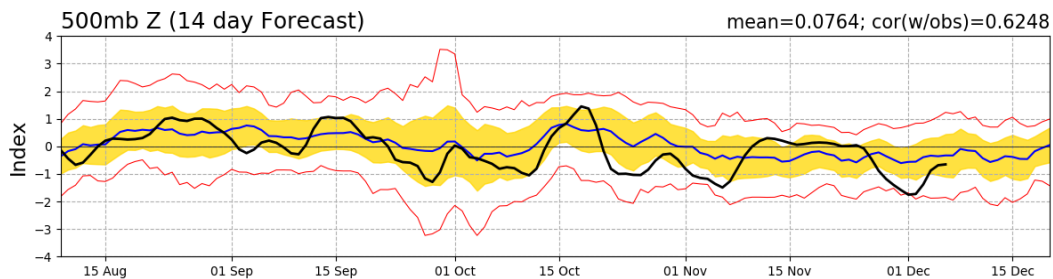
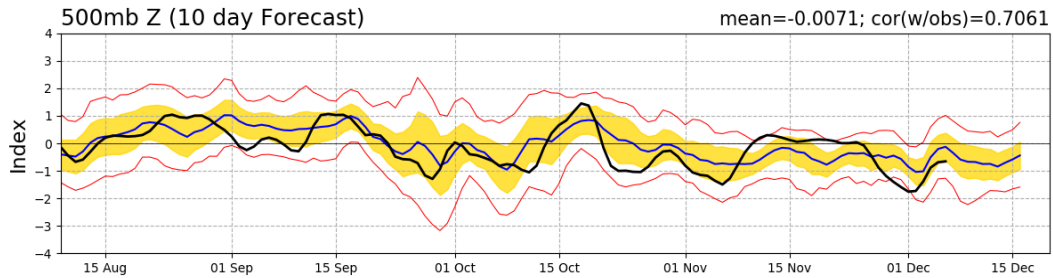
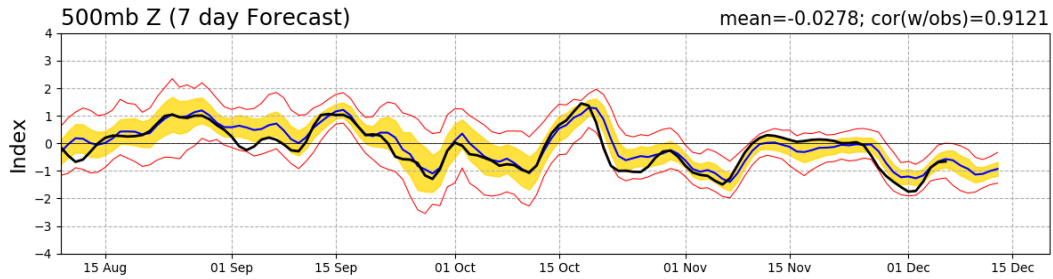
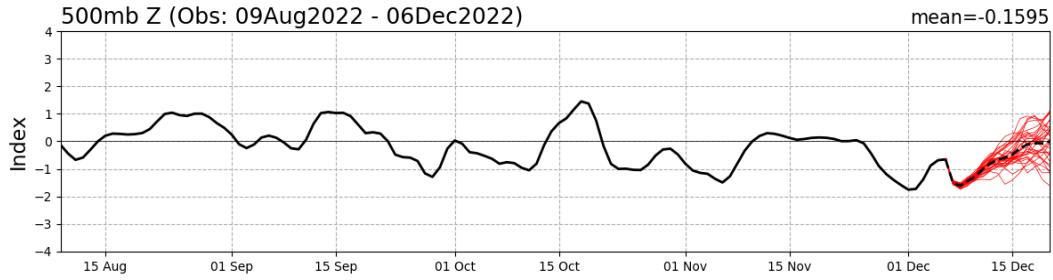
SUB TROPICAL Monitoring for potential transition to TC. Invest label color denotes tropical transition probability



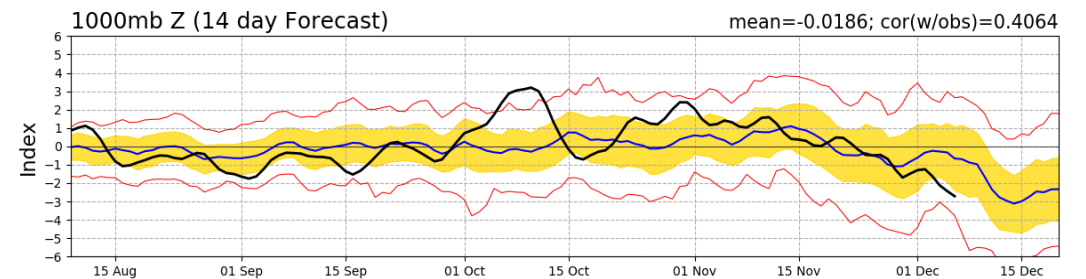
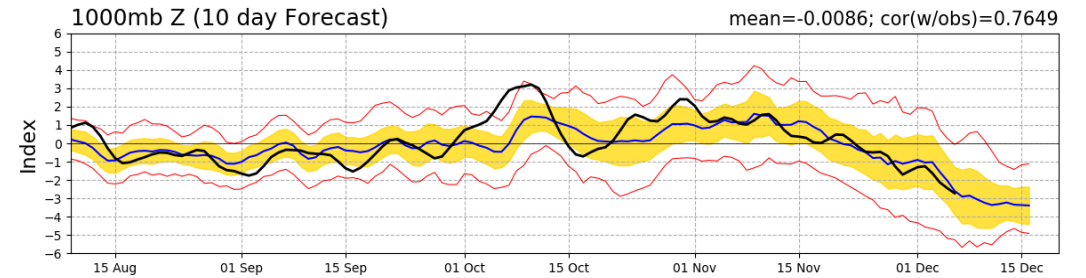
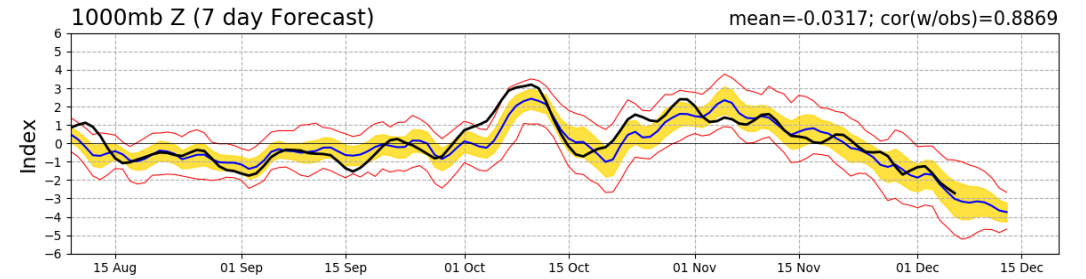
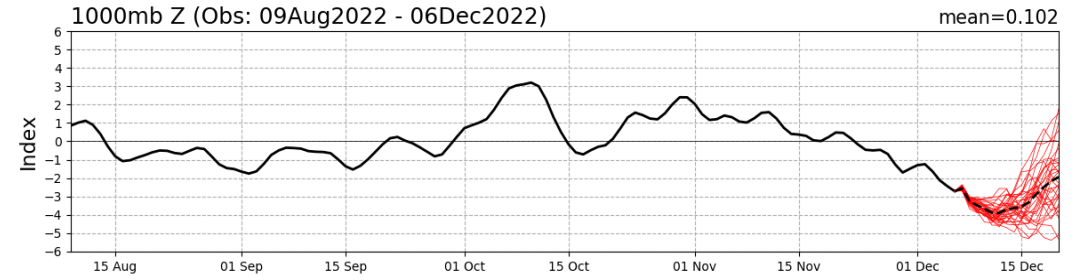
Tropical Cyclone (Reference Warning)

Teleconnection Indices: PNA / AO:

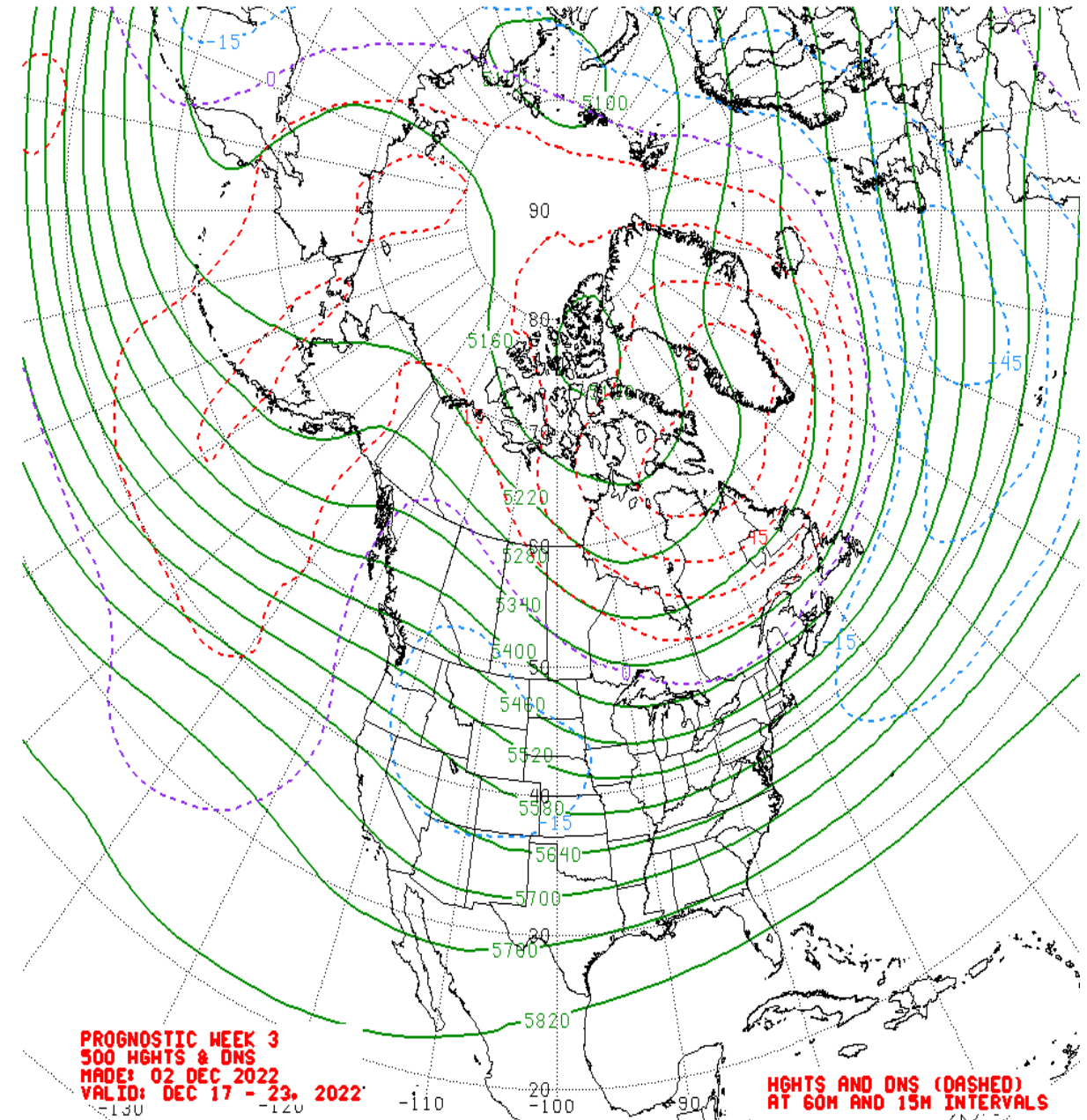
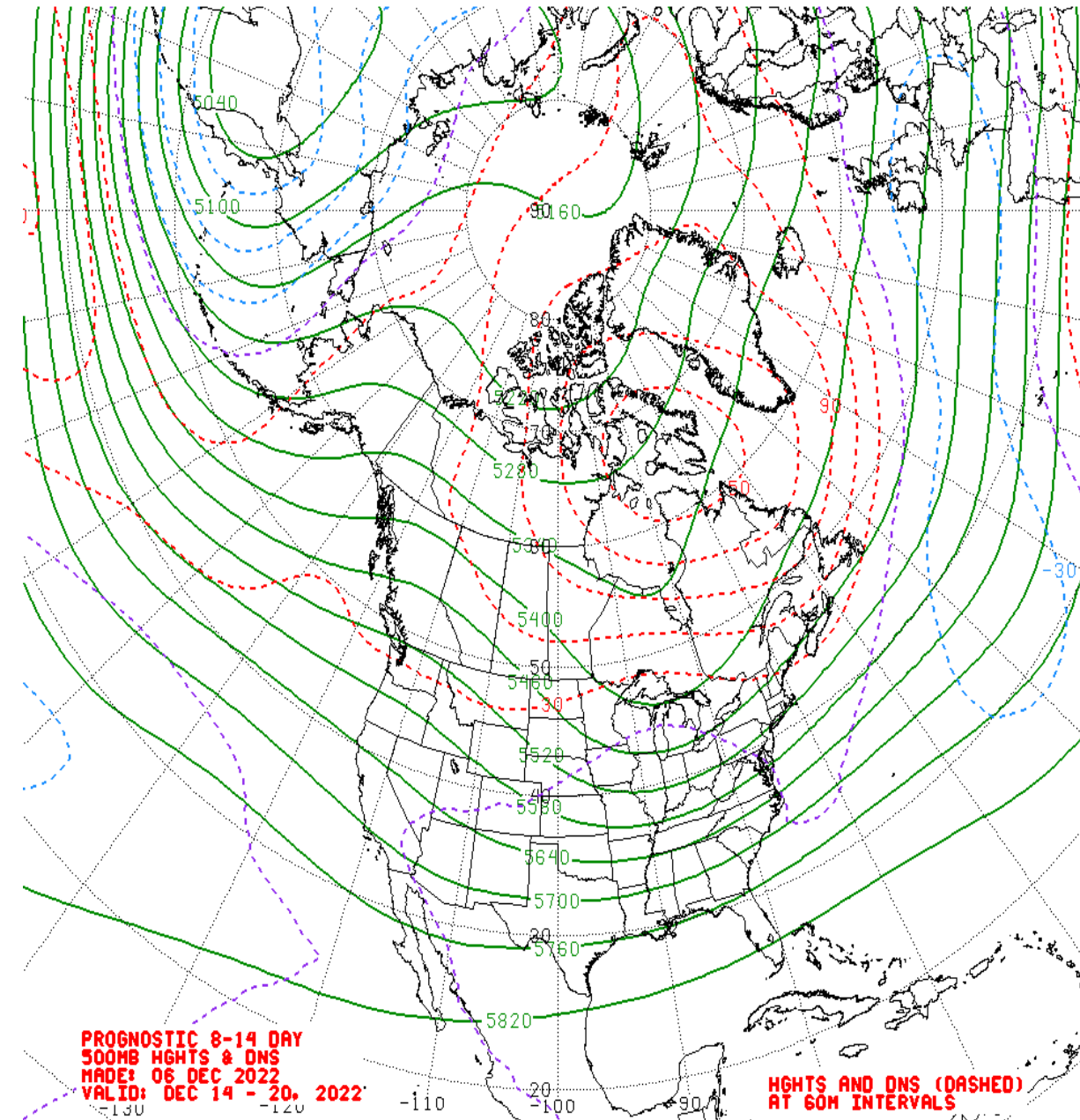
PNA Index: Observed & GEFS Forecasts



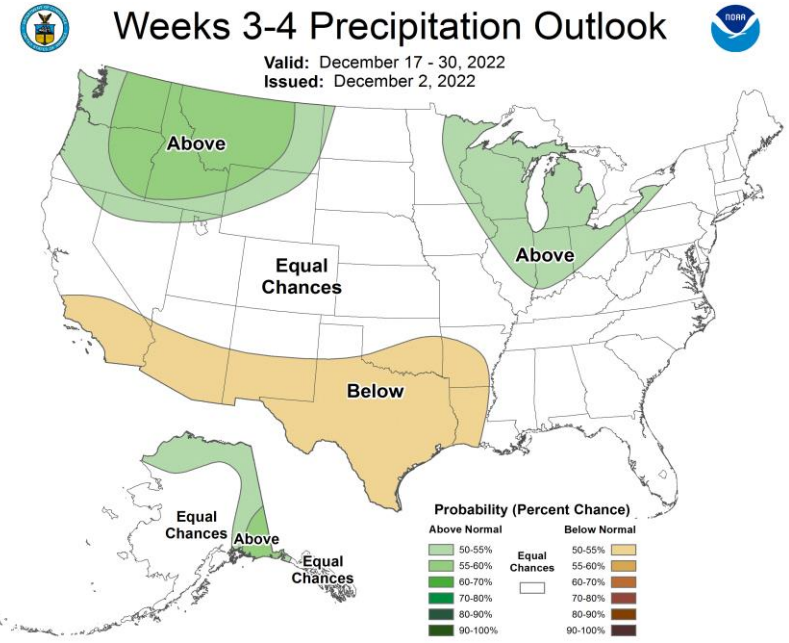
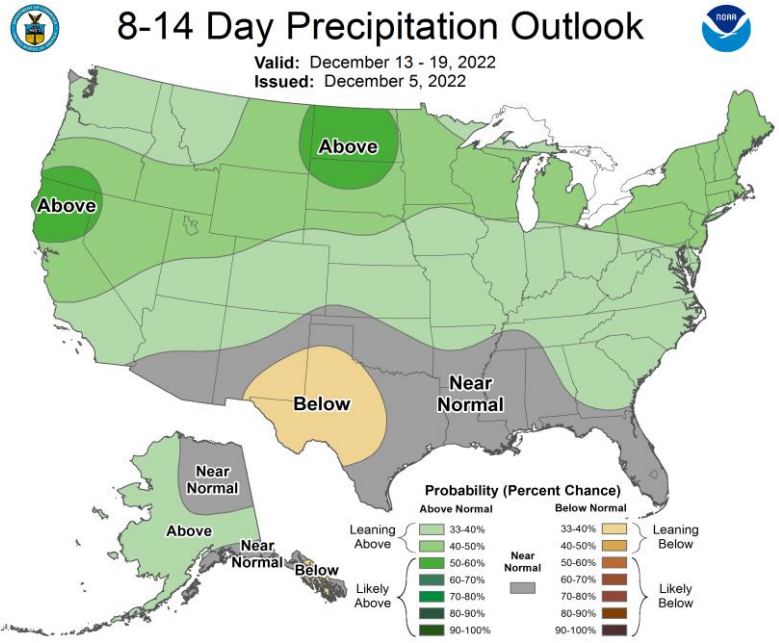
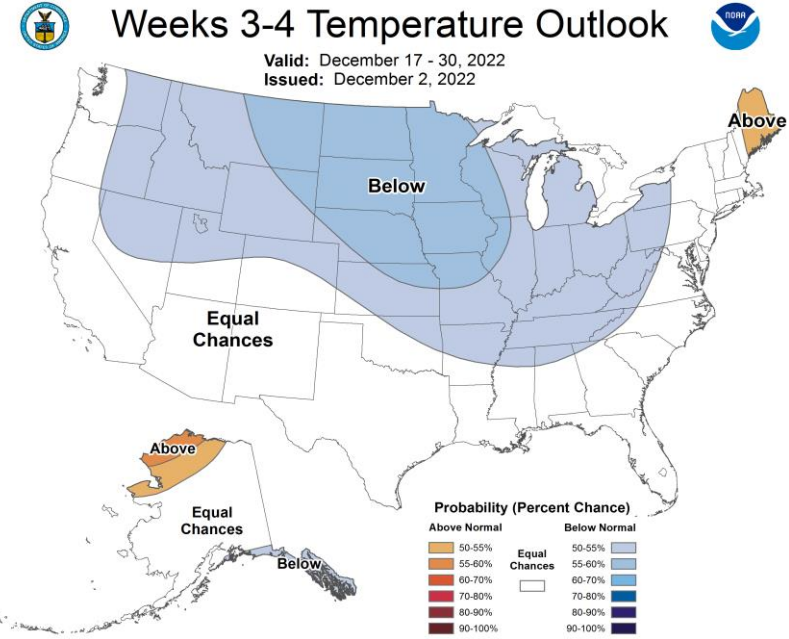
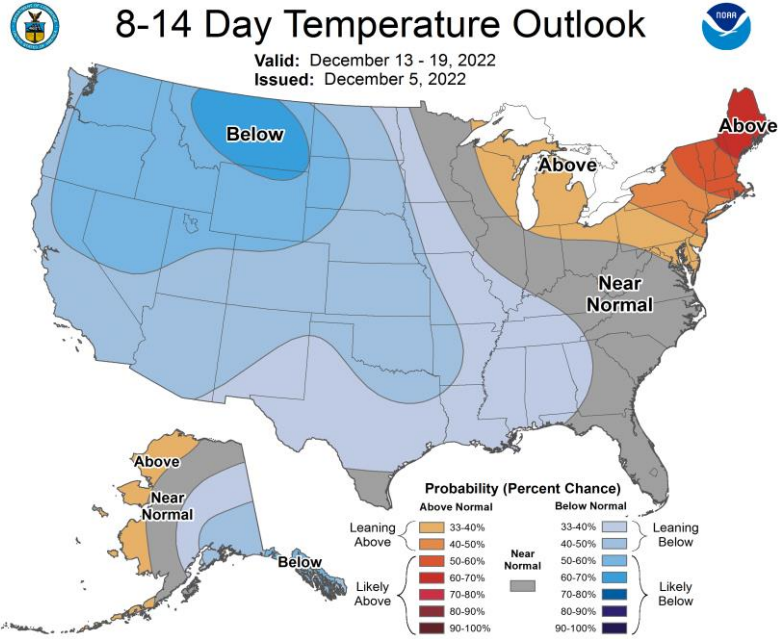
AO Index: Observed & GEFS Forecasts



Mean 500-hPa Height Anomaly Forecasts:



Official Temperature & Precipitation Forecasts:



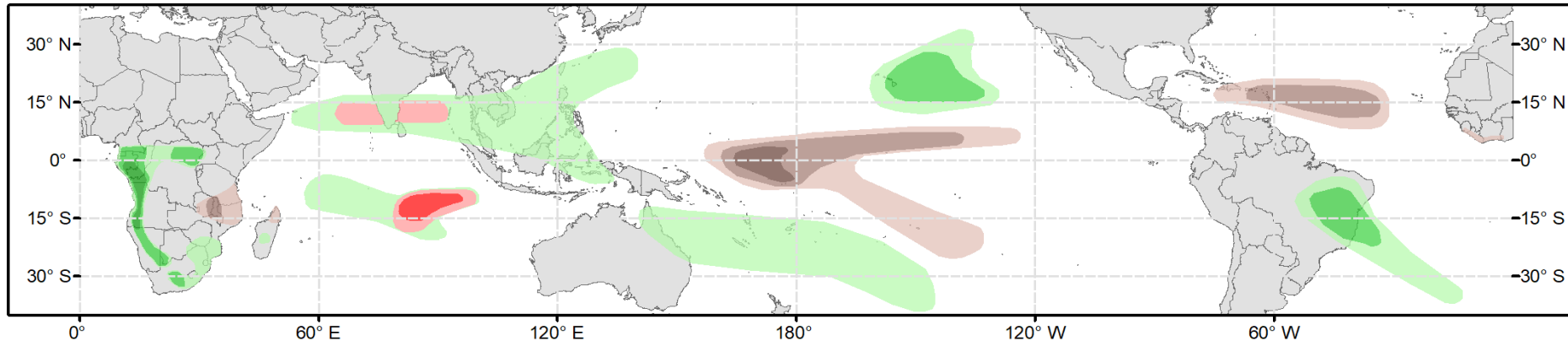


Global Tropics Hazards Outlook

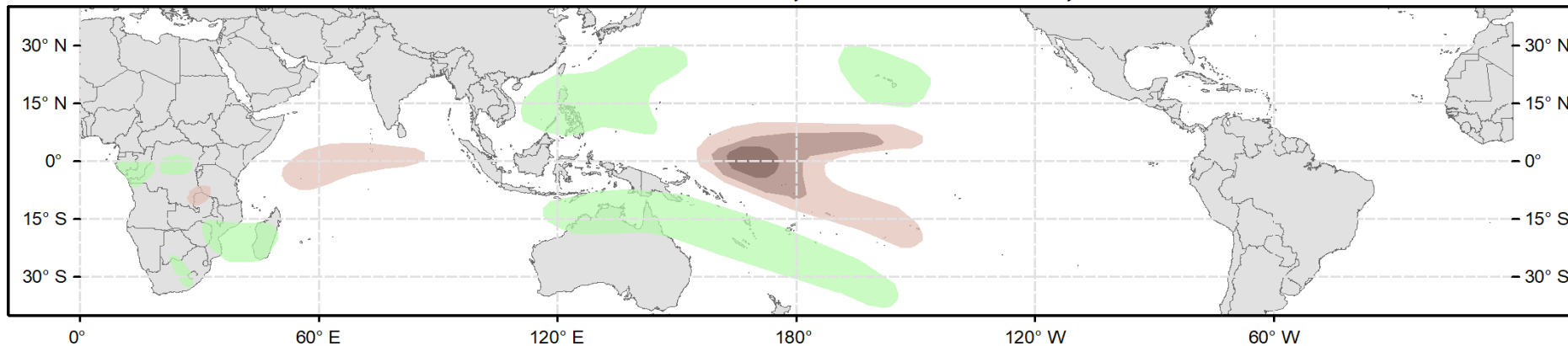
Climate Prediction Center



Week 2 - Valid: Dec 14, 2022 - Dec 20, 2022



Week 3 - Valid: Dec 21, 2022 - Dec 27, 2022



Week-2 Only

Tropical Cyclone (TC) Formation Probability

>20% >40% >60%

Tropical Depression (TD) or greater strength

Above-Average Rainfall Probability

>50% >65% >80%

Weekly total rainfall in the Upper third of the historical range

Below-Average Rainfall Probability

>50% >65% >80%

Weekly total rainfall in the Lower third of the historical range

Above-Average Temperatures Probability

>50% >65% >80%

7-day mean temperatures in the Upper third of the historical range

Below-Average Temperatures Probability

>50% >65% >80%

7-day mean temperatures in the Lower third of the historical range

Issued: 12/06/2022
Forecaster: Pugh

This product is updated once per week and targets broad scale conditions integrated over a 7-day period for US interests only. Consult your local responsible forecast agency.