



**2010 Annual Report of the Mining Act Reclamation Program to the New Mexico Mining Commission**



**Mining and Minerals Division  
Mining Act Reclamation Program  
Director: Charles Thomas, P.E.  
Program Manager: Holland Shepherd**

## **Cover Photo Information**

The cover photo was taken at the Mogollon Exploration Project, located in Catron County, New Mexico. The photo depicts the exploration site after reclamation practices have been applied. Columbus Silver Corporation reclaimed the site after cutting a mile of new roads and drilling nine boreholes to explore for gold and silver.

The cover photo was taken in September of 2009 and portrays steep slope reclamation in difficult terrain. The area is located in a Piñon-Juniper Community. The operator used a variety of reclamation techniques to achieve a reclaimed area that matches the original contour, provides for erosion control, provides for wildlife habit, and blends in well with the natural surroundings. A backhoe was used to recontour the exploration roads and pads to simulate natural contours. Brush, mulch and large rocks were placed on the recontoured slopes and a seed mixture of adapted, native grasses and shrubs was put into the recontoured slopes to provide slope stability, enhance erosion control, and create wildlife habitat. Boreholes were plugged using high density bentonite or neat cement slurry, depending on contact with water.

The reclaimed area is expected to blend into the natural surroundings, and, over time, become nearly undetectable to the untrained eye.

## Table of Contents

---

Table of Contents .....	i
List of Tables .....	ii
List of Figures.....	ii
1. Introduction .....	1
2. New Mexico Mining Operations as of December 2010.....	2
3. Reclamation Practices under the New Mexico Mining Act .....	5
4. Mineral Production Statistics for New Mexico in 2009.....	9
5. Exploration and Proposed Mining Activities in New Mexico .....	14
6. Financial Assurance Update .....	18
7. Amendments to the New Mexico Mining Act Rules.....	19
8. Database and Geographical Information Systems Initiative .....	20
9. Tribal Consultation Policy.....	22
Appendix 1. Mining Operations in New Mexico as of December 2010 .....	25
Appendix 2. New Mexico Financial Assurance as of December 2010.....	53
Appendix 3. Maps of Mines and Exploration Projects Regulated by MARP in 2010 .....	61

## List of Tables

---

Table 1. Mining Operations Approved Since 1994 .....	2
Table 2. 2010 Approved and Pending Permit Applications .....	3
Table 3. Existing Mining Operations without Approved Closeout Plans as of December 2010.....	4
Table 4. Mines with Completed Reclamation .....	5
Table 5. Number of Acres Disturbed and Reclaimed as of December 2009 .....	7
Table 6. Mineral Production, Production Value, Rank, Employment, Payroll and Revenues, 2009.....	11
Table 7. Pending New Mine Applications .....	16
Table 8. Active Exploration Applications, 2010.....	17
Table 9. Mining Act Reclamation Program Staff.....	23
Table 10. Regular Existing Mines as of December 2010.....	27
Table 11. Regular New Mines as of December 2010 .....	30
Table 12. Minimal Impact Existing Mines as of December 2010 .....	31
Table 13. Minimal Impact New Mines as of December 2010 .....	33
Table 14. Regular Exploration Projects as of December 2010.....	36
Table 15. Minimal Impact Exploration Projects as of December 2010 .....	37
Table 16. General Permits as of December 2010 .....	44
Table 17. Financial Assurance as of December 2010 .....	54

## List of Figures

---

Figure 1. Percentage of Production Value, Employment, Payroll and Revenue by Commodity, 2009.....	12
Figure 2. Mineral Industry Employment, 1989 - 2009.....	13
Figure 3. Approved Regular and Minimal Impact Mines as of December 2010.....	62
Figure 4. Exploration Permits Active in Calendar Year 2010.....	63

## 1. Introduction

This annual report summarizes activities regulated by, and related to the Mining Act Reclamation Program (MARP) of the New Mexico Mining and Minerals Division (MMD). Part 13 of the New Mexico Mining Act Rules (Rules) requires an annual report be provided to the New Mexico Mining Commission. The annual report is to contain a general description of mining operations, reclamation practices, and production figures for the state.

Specifically, this report identifies activities related to the permitting and regulation of mines and mineral exploration under the Mining Act for the two-year time frame, from January 2009 through December 2010. The report also provides tables identifying all mining and exploration operations that have obtained a permit, or submitted a permit application, under the Mining Act Reclamation Program since its inception in 1994.

The report includes production figures for New Mexico mines active during the 2009 calendar year, the most recent year that statistics are available. Mine operators are required to report these figures to MMD each calendar year: calendar year 2009 production numbers were required to be submitted by April 2010. The 2009 production figures include statistics from all mines active in New Mexico, and not just those regulated under the Mining Act.

Additionally, the report discusses reclamation activities and practices related to specific mines in the state of New Mexico. The statistics addressing reclaimed and unreclaimed acreage originate from data provided to MMD in annual reports, submitted by the mine operators, and identify activities which have taken place during the period from January 1 to December 31, 2009.

Increases in precious metal values, particularly copper, uranium, gold, and rare earth elements, have resulted in an increased number of exploration projects and mining operation applications in New Mexico. MARP continues to make adjustments to the program to address the increase in permitting activities. This involves developing guidelines and guidance documents for exploration and mining applications, training staff in the technical issues related to uranium mine reclamation and radiation health physics, as well as training in the tribal consultation process, and distributing staff workloads to accommodate the additional number of applications. MARP continues to develop its database, electronic permitting, and geographical information systems (GIS) into the MARP work processes. To facilitate agency and public participation in the permitting process, permit applications, modifications, revisions and closeout plans for exploration and mining operation applications are now being made available on the MMD website at [http://www.emnrd.state.nm.us/MMD/MARP/permits/MARP\\_Permits.htm](http://www.emnrd.state.nm.us/MMD/MARP/permits/MARP_Permits.htm).

Section B of 19.10.13.1302 New Mexico Administrative Code (NMAC) states that the annual report shall include proposed amendments to the Rules, if any. No rule changes were made during calendar year 2010; however, MMD may propose changes during calendar year 2011.

## 2. New Mexico Mining Operations as of December 2010

MARP was established in the spring of 1994. Since then, all mining operations falling under the definition of *existing* mines – that is, operations having operated between January 1, 1970 and June 18, 1993 – have been fully permitted, including an approved closeout plan and financial assurance, with the exception of those mines shown in Table 3.

A number of new mines and projects – operations initiating activity after June 1993 – have been added to the list of permitted mines. These new projects and mines fall under the categories of *general permits, minimal impact exploration, regular exploration, and minimal impact new mining operations*. General permit operations cannot excavate materials greater than 200 cubic yards per year, or disturb greater than two acres of surface at any one time. The general permit category is typically used by hobby and recreational miners. Minimal impact exploration operations are small operations, typically under five acres, involved in the sampling of ore bodies prior to full-scale mine development. Regular exploration operations are those operations that are over five acres, or do not meet the definition of *minimal impact*. Calendar year 2010 saw an increase in the number of new exploration applications involving uranium, gold, silver, copper, and humate exploration. The exploration and general permit categories make up the largest number of permitted operations under MARP. All mining operations that have submitted permit applications, and have required a significant amount of program time, are listed in Tables 10 through 16 in Appendix No. 1. Table 1, below, shows the various types of mining and exploration operations, by category, that have received approved permits since the start of the program in 1994.

**Table 1. Mining Operations Approved Since 1994**

<b>Type of Operation</b>	<b>Description</b>	<b>Number of Operations</b>
Regular Existing Mining	>10 acres of disturbance	30
Regular New Mining	>10 acres of disturbance	0
Minimal Impact Existing Mining	<10 acres of disturbance	19
Minimal Impact New Mining	<10 acres of disturbance	24
Regular Exploration	> 5 acres of disturbance	3
Minimal Impact Exploration	<5 acres of disturbance	124
General (Recreational)	<200 cubic yards/yr of disturbance	197
<b>Total Mining Operations Permitted</b>		<b>397</b>

Table 2 identifies specific types of permit applications submitted to MMD during 2010 and identifies those applications that have been approved and those that are still pending. MARP had a large number of exploration submittals in 2010. Two regular new mine permit applications were initiated in 2009, and one in 2010. Two of these mines are for uranium properties in the Mt. Taylor area, and one is for a copper mine 40 miles east of Truth or Consequences. MARP continues to work on a large number of permit modifications and

revisions, which can be just as time consuming in processing and approving as new permit applications.

Modifications and revisions involved updating reclamation acreage, permit transfers, name changes and financial assurance instruments and amounts. The Tyrone Mine and the Chino Mine are both in the process of updating their closeout plans. These updates are major revisions to the mine permits, involving updating financial assurance, changes to the reclamation plans, and extended negotiations with the operator, other agencies, and the public.

Another revision involves Chevron Mining Inc.'s Questa Mine. MMD is particularly interested in the Questa Mine closeout plan revision, because of the need to coordinate reclamation plans with the Environmental Protection Agency's (EPA) Remedial Investigation and Feasibility Study, conducted under the Comprehensive Environmental Response, Compensation and Liability Act (CERCLA). The Record of Decision (ROD) concerning the remediation for the Questa Mine was signed by the EPA at the end of 2010. The signing of the ROD will help in moving forward the development of the revised closeout plan.

**Table 2. 2010 Approved and Pending Permit Applications**

Type of Operation	Description	Number of Operations		
		Pending	Approved	Denied
Regular New Mining	> 10 acres of disturbance	3	0	0
Minimal Impact New Mining	< 10 acres of disturbance	3	1	1
Regular Exploration	> 5 acres of disturbance	0	2	0
Minimal Impact Exploration	< 5 acres of disturbance	9	8	1
General Permits	< 200 cubic yards/yr of disturbance	0	14	0
Revisions	Revision to an Existing Permit	2	2	0
Modifications	Modification to an Existing Permit	10	5	0

Table 3 identifies regular existing and minimal impact mining operations that have not yet received approval for their closeout plans. The two United Nuclear Corporation mines, the Northeast Church Rock and the St. Anthony Mine, were involved in a lengthy court battle and are now working with MMD to develop permits. The U.S. EPA is managing a clean-up action at Northeast Church Rock Mine for the Navajo Nation.

Two other operations, the Clodbuster Mine and the Challenge Mine, have been issued a series of notices of violation over the years, and remain out of compliance.

The Nacimiento Mine is an abandoned, open-pit copper operation near Cuba, New Mexico. The owner is deceased, and a responsible party has not been identified for the reclamation of the site. Portions of the Nacimiento Mine are situated on state and federal property. The United States Forest Service (USFS), New Mexico State Land Office (SLO), and New Mexico Environment Department (NMED) have worked together in the past, with limited

CERLA funds, to do a small amount of remediation.

The Northstar Mine is an existing mining operation that was required to obtain an approved permit from MMD. Although all information and financial assurance has been provided by the operator, MMD is waiting for the operator to provide right-to-enter evidence to MMD.

The Section 12 Mine is an old uranium mine that was added to the list in 2008, after it was determined to fall under the New Mexico Mining Act. MMD is still waiting for a closeout plan for the Section 12 Mine.

**Table 3. Existing Mining Operations without Approved Closeout Plans as of December 2010**

<b>Mine Name</b>	<b>Operator</b>	<b>Disturbed Acres</b>
Nacimiento Mine	Leaching Technology, Inc.	611
St. Anthony Mine	United Nuclear Corporation	430
Northeast Church Rock <sup>1</sup>	United Nuclear Corporation	40
Challenge Mine and Mill	Challenge Mining Company	17
Clodbuster Mine and Mill	Agronics, Inc.	27
North Star Mine	North American Metals LLC	2
Section 12 Mine	Southwest Resources Inc.	5

<sup>1</sup> Closeout of this site is being managed by the U.S. EPA



### 3. Reclamation Practices under the New Mexico Mining Act

Forty mining and milling sites under permit with MARP have now undergone some form of reclamation. In some cases, the entire site has been reclaimed; in others, a portion of the site has undergone reclamation. Once reclamation has been completed, mine operators must wait 12 years before they are eligible to apply for a complete release from the Mining Act's requirements. A release is only approved if the reclaimed area is revegetated in accordance with the post-mining land use. Operators are allowed to apply for a partial release of financial assurance once per year, per permit. Several operators have received a partial release for work performed towards final reclamation, for activities such as performing earthwork to achieve a post-mining contour, placing cover over reclaimed areas, and performing demolition work at the site. The total amount of financial assurance released in 2009 and 2010 was \$26,506,601.

Operations where reclamation has been completed on the entire site are listed below in Table 4.

**Table 4. Mines with Completed Reclamation**

ASARCO Deming Mill	Hiawatha and Little Jim Mine	Old Stope Leach Mine
Boston Hill Mine	Jersey Lily, Snowflake and Virtue Mines	Pinos Altos Mine
Brockman Mine	JJ No. 1/L Bar Mine	San Pedro Mine and Mill
Chino Limestone Mine	KB Mine	Shamrock Environmental Mine
CR Minerals Mill	KM Mine	St. Cloud/US Treasury Mine
Cunningham Hill Mine	Las Conchas/El Cajete Mine	Toro Mine
Cyprus Deming Tailings	Lordsburg Mine	U.S. Hill Mine
Deming Jigging Mill	Malone Mine	Velarde Mill
Georgetown Mine	Mesa Verde Resources Mill	

Three of these mines have received a complete release for reclamation, and for achieving the approved post-mine land use under the New Mexico Mining Act: the Boston Hill Mine in Grant County, in 2002, the Mesa Verde Resources Mill in Sandoval County, in 2005, and the CR Minerals Mill in Santa Fe County, in 2008.

MARP encourages innovative and experimental reclamation, particularly at sites where steep slopes and/or acid-producing materials present reclamation challenges. Four large operations, permitted under MARP, are currently evaluating vegetation test plots constructed over the last several years. The test plot programs are evaluating seeding rates, fertilizer rates, soil amendments, and infiltration rates using various soil covers and cover depths. It is still too early to draw conclusions from vegetation results, but trends are beginning to develop. Chevron Mining Inc.'s Questa Mine, Freeport-McMoRan's Tyrone and Chino Mines, and GCC Rio Grande's Tijeras Mine all have ongoing test plot programs at their mines.

MARP is also encouraging geomorphic reclamation approaches at hard rock mines. Geomorphic reclamation involves the use of reconstruction techniques, particularly on out-slopes, which mimic natural drainage patterns to create a more stable and natural looking post-mine topography. Utilizing this new approach, the coal mines in New Mexico have enjoyed significant successes in erosion reduction, maintenance cost reductions, and greater vegetation success. Hard rock mine operators are beginning to learn how this technique might improve their reclamation strategies. The Tyrone, Tijeras and Questa Mines are all exploring ways to incorporate geomorphic design into their reclamation plans.

The overall disturbed acreage under permit with MARP is 24,542.6 acres. The total number of acres reclaimed throughout the entire history of the program (1994-2009) is 5,179.1 acres. Table 5 shows the approximate number of acres disturbed and reclaimed as of December 2009 for each mine under permit with MARP. Based on information supplied by operators in their 2010 annual reports, a total of 940.1 acres were reclaimed in 2009.

The biggest contributor to this total was the Tyrone Mine, where approximately 851 acres of reclamation took place in 2009. The operator of the Tyrone Mine, Freeport-McMoRan, has reclaimed a total of approximately 4,092 acres since initiating reclamation in 2003.

During calendar years 2009 and 2010, Freeport-McMoRan Tyrone, Inc. continued several large-scale reclamation projects addressing the cleanup and reclamation of tailings impoundments and waste rock piles at their Tyrone Mine in Grant County. In 2009, Freeport-McMoRan received approval of the release of \$24,524,005 in financial assurance for completed reclamation at the No. 1, 1A, 1X and 2 tailings impoundments. In 2010, MMD released \$2,204,526 in financial assurance due to Freeport-McMoRan's reclamation of approximately 288 acres associated with the No. 1 stockpile. Also during 2010, Freeport-McMoRan continued reclamation of the No. 7A and 1C stockpile areas, and completed reclamation of the copper leach stockpile and precipitation plant at their Little Rock Mine.

Beginning in calendar year 2008, Freeport-McMoRan Chino Inc., initiated large-scale reclamation of their inactive tailing piles comprising approximately 1,600 acres. The inactive tailing piles include Ponds 1, 2, B, C, 4E, 4W, and portions of 6E and 6W. As of January 1, 2010, approximately 900 acres have been covered with three feet of cover material, of which 280 acres have been seeded. The remaining 620 acres were anticipated to be seeded in the summer of 2010. The reclamation of the inactive tailing piles is expected to be completed by the end of 2012.

To date, as part of the Continental Mine reclamation, the Freeport-McMoran Cobre Mining Company has closed approximately 83 historic shafts and adit features, and has reclaimed approximately 150 acres of the Hanover Empire Zinc Mining Area. The Continental Mine is currently inactive and has an approved standby plan.

The El Cajete Mine continued to undergo reclamation in 2008 and 2009 when approximately 15 additional acres underwent reclamation. The operation's permit from the U.S. Forest Service expired in November 2007, and consequently, its Mining Act permit

was suspended. The operator was asked to finish reclaiming the entire site by the end of 2009; however, the reclamation remains ongoing.

During the summer of 2007, ASARCO reclaimed the Deming Tailings facility, located just north of Deming, New Mexico. Approximately 50 acres of original tailings, and 65 acres of an area affected by wind-borne and windblown tailings, were reclaimed.

**Table 5. Number of Acres Disturbed and Reclaimed as of December 2009**

Permit Number	Mine Name	Permit Type	Disturbed Acres To Date	Reclaimed Acres To Date
BE001RE	Tijeras Mine and Mill	Regular Existing	576.8	66.2
CA002MN	Deadwood / Last Chance Mine	Minimal Impact New	1	0
CA003ME	Hiawatha And Little Jim Mine	Minimal Impact Existing	2	0
CI002RE	Mt. Taylor Mine	Regular Existing	147.7	0
CI003MN	ANP No. 2 Mine	Minimal Impact New	2	0
CI004MN	Haskani Mine	Minimal Impact New	13.3	0.5
CI005RE	Tinaja Pit Mine	Regular Existing	40	0
CI006MN	Ray Claims No.4 & No.6 Mine	Minimal Impact New	6	0.5
CI007RE	JJ No. 1 / L Bar Mine	Regular Existing	11	0
DA003MN	Alley Gypsum Mine	Minimal Impact New	1.2	0
GR001RE	Pinos Altos Mine	Regular Existing	9	9
GR002RE	Continental Mine and Mill	Regular Existing	928	19
GR006RE	Chino Limestone Mine	Regular Existing	55	55
GR007RE	Little Rock Mine	Regular Existing	88	0
GR008RE	Jersey Lily, Snowflake and Virtue Mines	Regular Existing	22	17
GR009RE	Chino Mine and Mill	Regular Existing	9,754	0
GR010RE	Tyrone Mine and Mill	Regular Existing	8,415	4,092
GR011ME	Summit Mine	Minimal Impact Existing	3	0
GR012MN	KB Mine	Minimal Impact New	41	41
GR018ME	Banks Lost New Summit No. 1 Mine	Minimal Impact Existing	3	0
GR020RE	Georgetown Mine	Regular Existing	2	2
GR025ME	Mathis Lime Quarry Mine	Minimal Impact Existing	5	0
GR028RE	Center Mine	Regular Existing	3	0
GR029ME	Mount Royal Mine and Mill	Minimal Impact Existing	1	0
GR030ME	Chemical Lime Mine & Mill	Minimal Impact Existing	4.4	4.4
HI001RE	Lordsburg Mine and Mill	Regular Existing	15	5
HI002RE	Brockman Mine	Regular Existing	40	40
HI004MN	KM Mine	Minimal Impact New	9	8
HI008ME	Volcano Mine	Minimal Impact Existing	8	0
LI001ME	Warner Gulch Placer Mine	Minimal Impact Existing	2	2
LI005ME	Capitan Iron Mine	Minimal Impact Existing	12	0
LU001RE	Deming Jigging Mill	Regular Existing	16	16

Permit Number	Mine Name	Permit Type	Disturbed Acres To Date	Reclaimed Acres To Date
LU008RE	Cyprus Deming Tailings	Regular Existing	20	20
LU009RE	Asarco Deming Mill	Regular Existing	56.5	44
MK002RE	Section 35 Mine	Regular Existing	40	30
MK003ME	Star Lake Mine - Menefee	Minimal Impact Existing	4	2
MK005RE	Section 27 Mine	Regular Existing	15	0
MK006RE	St. Anthony Mine	Regular Existing	435	0
MK007ME	Star Lake Mine - Mesa Verde	Minimal Impact Existing	39.4	29.8
MK008ME	Pueblo Alto Mine	Minimal Impact Existing	10	7
MK009RE	Old Stope Leach Mine	Regular Existing	81	78
MK010MN	U-Mate Mine	Minimal Impact New	2	0
MK011MN	Morningstar Mine	Minimal Impact New	14	12
OT002MN	B.O.W. Mine	Minimal Impact New	0.6	0
RA001ME	Northstar Mine	Minimal Impact Existing	1.3	0
RA003ME	Cullum Claims Mine	Minimal Impact Existing	20	0
RA004RE	Rocky Mountain Mine	Regular Existing	23.2	0
RA005RE	Velarde Mill	Regular Existing	28	27.4
RA006ME	General Pumice Mine	Minimal Impact Existing	17	0
SA001RE	El Cajete Mine	Regular Existing	68	39.5
SA004MN	Copar South Pit Mine	Minimal Impact New	9	9
SA005ME	Menefee Mill	Minimal Impact Existing	9.7	0
SA006MN	Copper City Mine	Minimal Impact New	1	0
SA009MN	Eagle Mesa Mine	Minimal Impact New	12.1	2.5
SA011MN	San Luis Mine	Minimal Impact New	15	10
SF001ME	San Pedro Mine and Mill	Minimal Impact Existing	12	12
SF002RE	Cunningham Hill Mine	Regular Existing	307	289
SF003ME	Silver Silica Mine	Minimal Impact Existing	4	0.5
SF006ME	CR Minerals Mill	Minimal Impact Existing	8	8
SI001ME	St. Cloud U.S. Treasury Mine	Minimal Impact Existing	10	3
SI005MN	Burbank Canyon Mine	Minimal Impact New	8	0
SI006RE	Zeolite Mine and Mill	Regular Existing	51	24.5
SI007ME	Midnight Mine	Minimal Impact Existing	4	0
SI020MN	Coyote Cliff No. 1 Mine	Minimal Impact New	0.6	0
SI021MN	Coyote Cliff No. 2 Mine	Minimal Impact New	0.8	0
SO001RE	Socorro Mine and Mill	Regular Existing	160	43.4
SO002MN	Sais Quarry Mine	Minimal Impact New	3.7	0
TA001RE	Questa Mine and Mill	Regular Existing	2,300	21
TA002RE	El Grande Mine and Mill	Regular Existing	170	14
TA003RE	U. S. Hill Mine	Regular Existing	60	60
TA005RE	No Agua Mine and Mill	Regular Existing	276	0
VA001ME	Lucero Quarry Mine	Minimal Impact Existing	9.3	0

**TOTAL ACREAGE:            24,542.6            5,164.2**

#### 4. Mineral Production Statistics for New Mexico in 2009

Over \$1.7 billion worth of minerals were extracted in New Mexico during 2009, a 34.3 percent decrease from the 2008 record high (Table 6). In response to the economic downturn, the quantity of minerals produced decreased from 2008 levels for all commodities. Production quantity is expected to decrease further in 2010 and early 2011 in response to the decreased mineral commodity demand and financial market instability.

Confidentiality laws do not allow production values specific to a mining operation to be made public. Therefore, we have provided production values by commodity, and not by a specific mining operation. Total production for commodities with less than three producers also must be held confidential. Not all commodities listed come under the Mining Act, but they have been included to provide a comprehensive list of all minerals produced in New Mexico. Many of the operations classified as *industrial minerals* and *aggregates* do not fall under the Mining Act's jurisdiction. Coal and potash operations do not fall under the Mining Act. Coal mines are permitted under the New Mexico Surface Coal Mining Act. Potash mines and refineries are not regulated under either act.

New Mexico remains a leading U.S. mineral producer, ranking first in potash, perlite and zeolite; third in copper; sixth in molybdenum; and twelfth in coal production. The principal minerals, in descending order of value, are coal, potash and copper. According to the U.S. Geological Survey, New Mexico ranked twentieth in 2009 when ranking states by the production value of non-energy minerals. Our state produces 1.7 percent of the total U.S. non-energy minerals production value.

In 2009 coal claimed the top spot for production value and remained the leading commodity for revenue generation and payroll (Figure 1). Total revenues generated by mineral production in New Mexico reached an all time high of \$70.9 million in 2009. The record revenue can be attributed to increased state revenues from new potash leases in Lea County.

Mining sector employment and payroll figures decreased in 2009. Mineral industry payroll exceeded \$287.2 million, a 17.6 percent decrease from 2008. Coal was the largest employer in New Mexico's mining industry, followed by potash and aggregates. Many mining companies suspended contract workers and reduced the number of direct employees in early 2009, in response to plummeting commodity prices. The total number of employees in the mining industry in 2009 was 5,160, a 38.5 percent drop. Direct employment decreased 27.3 percent to 4,469 employees. Reclamation employment decreased 48.1 percent to 395 workers. Contract employment was cut in half to 691 workers (Figure 2). While commodity prices had rebounded by December 2009, many mines remained on reduced production schedules that required fewer workers.

Capital improvement expenditures remained stable between 2008 and 2009. New Mexico mining companies spent \$197.2 million on capital improvements and equipment in 2009.

There were 207 registered active mining operations in New Mexico in 2009. These

operations included five coal mines; three potash mines, five potash refineries and one potash compaction plant; one molybdenum mine and one molybdenum mill; one copper mine and two solvent extraction/electro-winning (SX/EW) plants; 17 industrial mineral mines and 16 industrial mineral mills; and 154 stone and aggregate operations.

**Table 6. Mineral Production, Production Value, Rank, Employment, Payroll and Revenues, 2009**

Mineral	Production <sup>1</sup>	Production Rank <sup>2</sup>	Production Value \$	Employment <sup>3</sup>	Reclamation Employment <sup>4</sup>	Payroll \$ <sup>5</sup>	Revenue Generated \$ <sup>6</sup>
Coal	23,952,661	12	\$ 735,930,737	1,471	136	\$103,442,528	\$ 45,026,086
Uranium <sup>7</sup>	-	-	\$ -	54	45	\$ 2,483,283	\$ 80,547
Copper	121,212,422	3	\$ 289,638,095	813	98	\$ 39,583,105	\$ 2,367,623
Molybdenum	269,302	6	\$ 3,762,149	194	8	\$ 13,907,000	\$ -
Gold	465	-	\$ 452,195	54	2	\$ 1,692,321	\$ 3,509
Silver	-	-	\$ -	2	0	\$ -	\$ 76
Other Metals	28,661	-	\$ 458,188	0	0	\$ -	\$ -
Potash <sup>8</sup>	602,231	1	\$ 491,276,710	1,227	28	\$ 93,757,945	\$ 20,593,758
Industrial Minerals <sup>9</sup>	1,566,111	-	\$ 124,402,302	446	17	\$ 15,524,080	\$ 1,040,533
Aggregates	13,537,659	-	\$ 110,879,335	901	61	\$ 16,906,799	\$ 1,487,533
<b>TOTAL</b>			<b>\$1,756,799,711</b>	<b>5,160</b>	<b>395</b>	<b>\$287,297,061</b>	<b>\$ 70,599,665</b>

Source: Mine Registration, Reporting and Safeguarding Program, Mining and Minerals Division, unless otherwise noted.

<sup>1</sup> Production for coal, industrial minerals, aggregates, other metals and potash is reported in short tons; copper and molybdenum in pounds; and gold in troy ounces.

<sup>2</sup> Production rank is based on 2009 production value in relation to other U.S. states. Sources: Metals, potash, industrial minerals and aggregates, Mineral Resources Program, United States Geological Survey (minerals.er.usgs.gov); Coal, Energy Information Administration, U.S. Department of Energy (www.eia.doe.gov).

<sup>3</sup> Employment includes direct and contract employees. Gold employment and payroll is for reclamation activities at closed mines and development of a new mine and mill.

<sup>4</sup> Total employment numbers includes reclamation employment.

<sup>5</sup> Payroll is for direct employees and does not include contract employees. Payroll does not include benefits.

<sup>6</sup> Value reflects federal and state revenues. State revenue includes state trust land mineral lease royalties, rentals and bonuses, and severance, excise and conservation tax revenues. Federal revenue includes 50% state share of federal royalties. Sources: State data, New Mexico Taxation and Revenue Department (www.tax.newmexico.gov) and State Land Office (www.nmstatelands.org); Federal data, Bureau of Ocean Energy Management, Regulation and Enforcement (www.boemre.gov).

<sup>7</sup> Employment and payroll numbers are for licensing and permitting at proposed mines, and reclamation and maintenance at closed mines and mills.

<sup>8</sup> Potash production is reported as K<sub>2</sub>O mill production.

<sup>9</sup> Category includes gypsum, perlite, salt, limestone, calcite, dimension stone, clay, humate, scoria, pumice and zeolites.

Figure 1. Percentage of Production Value, Employment, Payroll and Revenue by Commodity, 2009

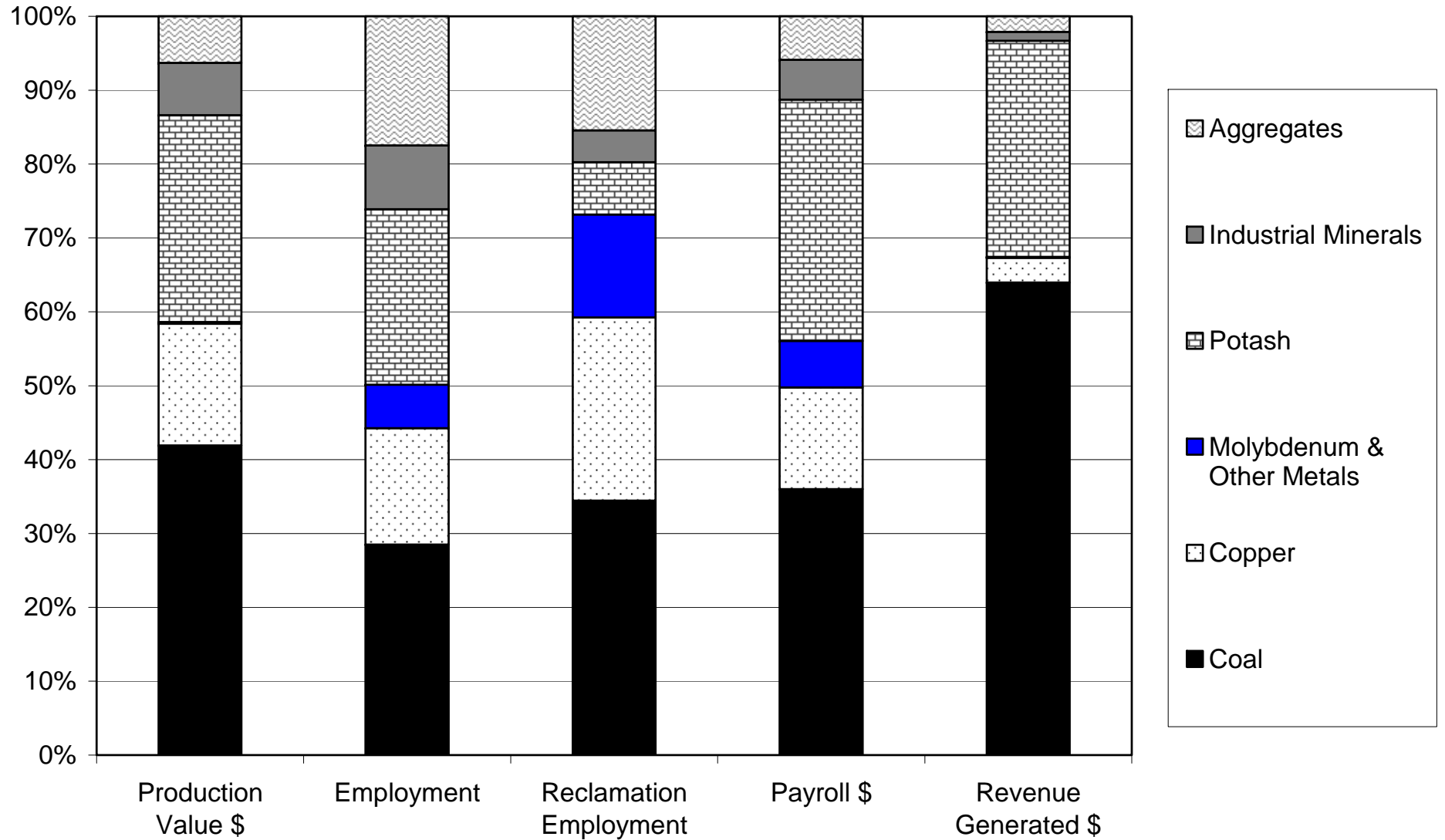
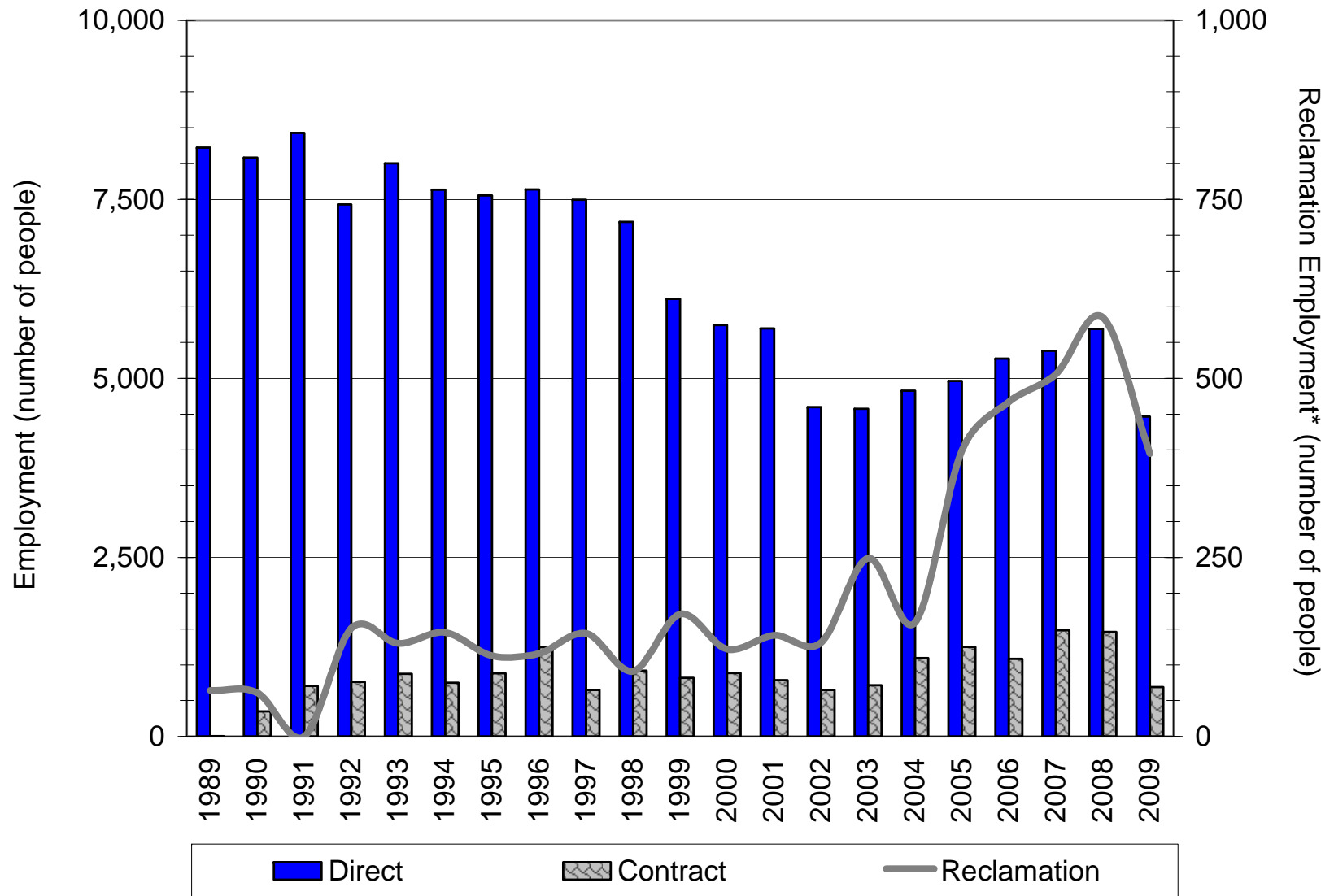




Figure 2. Mineral Industry Employment, 1989 - 2009



\* Reclamation employment is a subset of direct and contract employment.

## **5. Exploration and Proposed Mining Activities in New Mexico**

MARP has jurisdiction over exploration, mining and reclamation for hard rock mineral extraction operations in New Mexico. Increased commodity prices of precious metals, rare earth metals and uranium have fueled a significant increase in exploration and mine development activities in New Mexico since 2005.

Lordsburg Mining Company, a wholly-owned subsidiary of Santa Fe Gold Corporation, focused their 2009 activities on the construction of the Summit Mine, in Grant County, and the Banner Mill, in Hidalgo County. The underground Summit Mine began ore production in February 2009 and is the only active gold mine in the state. Underground mine development and stockpiling of ore is ongoing, and it is expected that the mine will reach full production during the first half of 2011. The Banner Mill, built to process the Summit Mine ores, is the only lined tailing facility currently operating in the state. Construction of the crushing and screening plant, a ball mill, a 400 ton-per-day flotation plant and tailings disposal impoundment at the Banner Mill was completed in late 2009. Processing operations at the mill commenced in March 2010 and the first gold concentrate shipped from the mill facility in fall 2010.

Two new conventional uranium mines are under development in New Mexico: Roca Honda Resources' Roca Honda Mine and Laramide Resources' La Jara Mesa Mine (Table 7). The proposed Roca Honda Mine is located in McKinley County on Cibola National Forest and state trust lands. Roca Honda has submitted both the sampling and analysis plan and the permit application package to MMD. The Roca Honda application indicates that the mine site and surface facilities will consist of approximately 183 acres of surface disturbance within the proposed 1,920-acre permit area. Roca Honda Resources has also submitted a mining plan of operations to the U.S. Forest Service, that is being handled through the Forest Service National Environmental Policy Act (NEPA) Environmental Impact Statement (EIS) process.

The proposed La Jara Mesa Mine is located in Cibola County on Cibola National Forest land on the edge of the Mt. Taylor Traditional Cultural Property. Laramide Resources has submitted a permit application to the U.S. Forest Service for the proposed mine, which will be handled through the Forest Service EIS process. Laramide Resources has also initiated the permitting process with MMD by submitting a sampling and analysis plan. The La Jara Mesa Mine application indicates a total of approximately 22 acres of surface disturbance within the proposed 77 acre permit area.

New Mexico Copper Corporation submitted a sampling and analysis plan for the Copper Flat Mine, a proposed new regular copper mine in Sierra County. The operator has already submitted a plan of operation to the Bureau of Land Management (BLM). MMD and BLM are working together to address the federal NEPA and state Environmental Evaluation (EE) processes.

Exploration for gold, silver and other precious metals continues in New Mexico (Table 8). From 2009 to 2010, there were ten active MARP permits for precious and base metal

exploration projects in Catron, Grant, Hidalgo and Socorro counties. In addition, one bertrandite exploration permit and one goethite/hematite exploration project were active in Socorro County in 2010. Galway Resources had an active molybdenum exploration project at Victorio Mountain in Luna County. There were two copper exploration projects permitted by MARP in Grant County: Copper One (USA) Inc.'s Lone Mountain project and LT Ranch project; and one turquoise exploration project: the Phillip Chambless, Gunsight Exploration project.

During 2009 and 2010, MARP oversaw one exploration permit for specimen fluorspar in Socorro County, one exploration permit for turquoise in Grant County and three exploration permits for humate in McKinley County.

MARP staff continues to develop guidance documents for use in the permitting process. MMD has released the environmental evaluation guidance document for Part 6 new mining operations. The purpose of this guidance is to provide a framework for compliance with the New Mexico Mining Act Rules regarding the EE required in 19.10.6 NMAC (Part 6). The State of New Mexico does not have a standardized environmental review process. However, this EE guidance document generally follows the NMED state environmental review process, which is a similar process utilized to evaluate environmental impacts from potential infrastructure construction projects. The EE is based on the procedures and requirements for performing an environmental impact analysis under NEPA.

Two additional guidance documents were released for MARP permitting. The new Part 3 guidance, *guidance document for Part 3 Permitting Under the New Mexico Mining Act*, details the permit process covered by 19.10.3 NMAC (Part 3). This includes general permit dry, general permit wet, minimal impact Exploration and Minimal Impact New Mining Operations. The *guidance document for Part 4 Permitting Under the New Mexico Mining Act* details the regular exploration permit process under 19.10.4 NMAC (Part 4).

MARP has also been working on other guidance documents to address mine permitting issues. One guidance document, still in draft form, addresses the reclamation of uranium mines in the state. The guidance discusses criteria for the cleanup and stabilization of new uranium mine properties to be developed under Part 3 and Part 6 of the New Mexico Mining Act Rules.

**Table 7. Pending New Mine Applications**

**Pending New Regular Mine Applications**

Project Name	Operator	Surface Ownership	Commodity	Proposed Disturbance (acres)
Copper Flat Mine	New Mexico Copper Corporation	U.S. Bureau of Land Management Private Owners	Copper	Unknown at this time
La Jara Mesa Mine	Laramide Resources	U.S. Forest Service	Uranium	22
Roca Honda Mine	Roca Honda Resources	U.S. Forest Service State Land Office	Uranium	183

**Pending New Minimal Impact Mine Applications**

Project Name	Operator	Surface Ownership	Commodity	Proposed Disturbance (acres)
Harding Mine	Wayne M. Rutland	U.S. Bureau of Land Management	Gold & silver	1.5
Hooper Quarry	St. Cloud Mining Company	Private	Dolomite	7.87
Horizon-Ag Cuba Mill	Horizon Ag-Products	Private	Humate	5.5
Jaramillo Humate Mine	Anasazi Stone, LLC	U.S. Bureau of Land Management	Humate	2
Morningstar Mill	Morningstar Corporation	Private	Humate	

**Table 8. Active Exploration Applications, 2010**

Project Name	Operator	Surface Ownership	Commodity	Number of Holes
Mogollon	Columbus Silver (U.S.) Corp.	Private	Gold & Silver	14
Armijo	Grants Ridge Joint Venture	U.S. Bureau of Land Management, Private	Uranium	220
F-33	Grants Ridge Joint Venture	U.S. Bureau of Land Management	Uranium	23
Continent Lone Mountain	Copper One (USA) Inc.	Private	Gold, Silver, Copper	15
Malone 2	Evolving Gold Corporation	U.S. Forest Service	Gold	6
Gunsight	Philip Chambless	U.S. Bureau of Land Management	Turquoise	NA
Oro	Southern Silver Exploration, Ltd.	U.S. Bureau of Land Management, Private	Gold, Silver, Copper	10
LT Ranch	Copper One (USA) Inc.	Private	Gold, Silver, Copper, Lead, Zinc	14
Lordsburg	Entree Gold, Inc.	U.S. Bureau of Land Management	Gold, Copper	14
Gold Hill	Entree Gold, Inc.	State of New Mexico	Gold, Copper	4
Lordsburg West	AVEN Associates LLC	U.S. Bureau of Land Management, State of New Mexico	Gold, Silver, Copper	6
Victorio Mountain	Galway Resources US, Inc.	U.S. Bureau of Land Management	Metals	26
Section 13 ISR	Uranium Resources Inc.	Private	Uranium	10
Marquez Confirmation Drill	Neutron Energy	Private	Uranium	44
Elizabeth Claims	Neutron Energy	Private	Uranium	28
Star Lake MVR	Mesa Verde Resources	U.S. Bureau of Land Management	Humate	20
Pueblo Alto	Mesa Verde Resources	Private	Humate	15
San Luis Humate	Horizon Ag	U.S. Bureau of Land Management	Humate	9
Rifleshoot	Geoinformatics Alaska Exploration	U.S. Bureau of Land Management	Silver, Copper, Zinc	3
Copper Flat	New Mexico Copper Corp.	Private	Copper	6
Andrea Ann	Cliff Strieber	U.S. Bureau of Land Management	Fluorite	N/A
Sullivan Ranch	BE Resources Inc	Private	Bertrandite	5
Richard's Glory Hole	Alan Perryman	U.S. Bureau of Land Management	Goethite, Hematite	N/A

## **6. Financial Assurance Update**

Appendix 2 (Table 17) summarizes the types and amounts of financial assurance provided to the State of New Mexico by mining operators who have obtained approved permits and closeout plans. The forms of financial assurance include surety bonds, cash deposits, letters of credit, collateral (real estate), and third-party guarantees.

Financial assurance posted with the MMD totals over \$571 million, down from \$596 million in 2009. In 2009 and 2010 changes in financial assurance amounted to an overall reduction of \$24,712,689. Of this, approximately \$22.2 million of was released to Freeport-McMoRan Gold and Silver for reclamation activities completed at the Tyrone Mine. Additionally, financial assurance, totaling \$158,879, was added for two mining operations (Star Lake and Pueblo Alto Mines) and two exploration projects (LT Ranch and Sullivan Ranch). The existing financial assurance amounts for the Limestone Quarry, U.S. Hill, and the Rocky Mountain Mines were changed to accommodate permit modifications and revisions.

## **7. Amendments to the New Mexico Mining Act Rules**

The New Mexico Mining Commission (NMMC) last met in February and March in 2009 to promulgate rules to address new rule changes proposed by the MMD. The NMMC passed rules targeting exploration permits and, in particular, minimal impact exploration permits. The rule changes included financial assurance for all exploration permits (including minimal impact permits), more detailed standards for reclamation of exploration sites, and greater detail regarding the requirements to plug and abandon exploration boreholes. Section 19.10.3.302.K of the rules addresses specific standards for topsoil removal and storage, revegetation, and wildlife protection. Section 19.10.3.302.L details requirements for plugging and abandonment of exploration boreholes. Sections 19.10.3.302.M and 19.10.12.1204 specifies financial assurance requirements for minimal impact exploration permits.

Additionally, the 2009 rule changes included some changes to operator fees. The changes included an extension of the sunset date for fee collection to March 31, 2012, and increased certain fees related to exploration permit applications and new mine permit applications. For example the fee for a minimal impact exploration operation increased from \$100.00 to \$500.00; the fee for a minimal impact mining operation increased from \$350.00 to \$1,000.00. The new fee rules went into effect on March 16, 2009 and April 30, 2009 financial assurance and plugging and abandonment requirements went into effect.

MMD initiated internal discussions during the summer and fall of 2010, concerning the following further rule changes, to establish timeframes for the review of permit applications: changes to Part 1 of the rules, having to do with definitions; changes to clarify the public notice process related to permit applications; changes to Part 3 of the rules having to do with minimal impact operations; and changes to improve consistency in the regulatory language between common elements of all permit types. MMD intends to propose changes to Parts 1, 3, 4, 5, 6, and 12 of the Rules. The changes are intended to help streamline the permitting process, and provide for consistency when reviewing the various permit types. MMD has yet to release a draft to the Director's Advisory Committee (DAC), a step required prior to petitioning the Mining Commission formally with new rule changes.

## **8. Database and Geographical Information Systems Initiative**

MARP is working with the Energy, Minerals and Natural Resources Department (EMNRD) Information Technology Office (ITO) application developers to upgrade the MARP database. The MARP database tracks the activities of program staff in permitting, inspecting, and monitoring of mines and reclamation efforts; the administration and release of financial assurances, and regulatory reporting. The program completed the business rules and the database requirements document in fall 2009. Programming of the relational database interface was begun in 2010 and testing continued in 2010.

MARP implemented a Geographic Information Systems (GIS) initiative in 2006 to support its regulatory activities. Goals were to enable MARP program staff to more accurately track disturbed and reclaimed areas of mine sites and to increase work efficiency by utilizing geospatial information in permitting activities. The program continues to request and integrate geospatial information from mine operators into the permitting process. The GIS initiative also involves the active collection of geospatial data by program staff. Future plans involve making web-based products of the GIS available to the public, where appropriate, for easier access to, and understanding of, state permitting activities.

A MARP permit feature geodatabase continues to be populated and includes permit boundaries, mine units, drill holes and other mapped features of pending, approved and denied permit applications to the program. The resulting work will be integrated into the Enterprise-level geodatabase, SDE Geodatabase (ESRI, Environmental Systems Research Institute, Inc). The structure of the division-wide SDE Geodatabase is being developed and the connections to web mapping applications tested. The MARP web-mapping application will be phased and will share a common template with that currently developed by the ITO/GIS team in EMNRD.

Currently, mine operators are required to provide information concerning disturbed areas and reclaimed areas (pre- and post-treatment) to MARP in their annual reports. The Program continues to request that maps be submitted in a digital format compatible with MMD GIS structure.

Permit applications, revisions and modifications for exploration projects and mining operations are required to include geographic coordinates of permit boundaries, drill holes, and mine units. The program maps and compares coordinates that are supplied in the tables to the permit maps supplied in a permit application, revision or modification. This has become a part of the application review process.

Permit leads continue to use global positioning systems (GPS) to gather location data during inspections, thereby helping to build a geospatial component of permit details, over time, throughout the state. Permit leads utilize GPS technology in the field to navigate to areas of concern, to identify specific sampling sites, and to track acreage.

Point locations of permit sites and geospatial information are currently viewed through several internal web map applications, providing Program staff with access to the



developing maps of permit boundaries and features. Test plots and sampling sites, used to measure the effects of specific reclamation treatments, can be more comprehensively monitored for changes, over time, using the geospatial data. The next phase of web mapping will be developed through the Enterprise GIS that EMNRD is implementing.

## **9. Tribal Consultation Policy**

In 2009 the New Mexico Legislature passed the State Tribal Collaboration Act (STCA), mandating that state agencies consult with Indian nations, tribes and pueblos. The new law requires each department to designate a department Tribal Liaison Officer and perform annual reporting on the implementation of the Act.

In December 2009 Governor Bill Richardson announced the signing and adoption of Tribal Collaboration Communication Policies by every Cabinet-level agency, a first in New Mexico's history. All cabinet agencies now have a formal process in place for communication and collaboration with the sovereign tribal governments in New Mexico. These policies form a strong foundation for working on a government-to-government basis to better address the needs and concerns of New Mexico's Native American citizens.

The Tribal Collaboration Communication Policies were created collaboratively by five state-tribal workgroups: the Energy, Minerals and Natural Resources Department, the New Mexico Environment Department, the Office of the State Engineer, the Department of Game and Fish, and the New Mexico Department of Agriculture.

The department's policy establishes the principles and framework for effective tribal consultation. MMD has been working for some time to integrate tribal consultation into the permitting frameworks of both the coal and hard rock mine reclamation programs. During fiscal year 2010 (July 1, 2009 to June 30, 2010), MMD sent approximately two hundred (200) STCA notifications concerning seventy five (75) permits or construction projects, to Tribal Governments. Over the past year, MMD has communicated with all twenty-two Tribal Governments in New Mexico. MMD expanded STCA notification beyond state borders to include federally recognized Tribal Governments that have an interest in activities in New Mexico: the Hopi Tribe and the Chiricahua Apache Governments in Arizona and the Ft. Sill Apache of Oklahoma. MMD conducted government-to-government meetings with the Acoma, Laguna, Hopi and Ft. Sill Apache Tribal governments to discuss their concerns about various permits. The permit of most interest during this time period was the Roca Honda Mine permit application, a new uranium mine proposed in McKinley County.

The most significant State-Tribal issue has been the increased activity in the Grants Uranium Belt and the listing of the Mt. Taylor Traditional Cultural Property to the State Register of Cultural Properties. Much of the permitting in that area, to date, has been associated with exploration.

Government-to-government consultation with Native American Tribes is also part of MMD's process to identify and evaluate potential impacts to historic, cultural and sacred properties. Protection of historic and cultural resources is an integral part of the MMD regulatory process. All of MMD's programs integrate archaeological investigations into their baseline data requirements and have specific regulatory provisions for the identification, protection and consideration of effects to cultural resources as part of the permit and project decision-making process.

**Table 9. Mining Act Reclamation Program Staff**

<b>Employee Name &amp; Title</b>	<b>Telephone</b>	<b>E-Mail Address</b>
Holland Shepherd Program Manager Reclamation Scientist	(505) 476-3437	holland.shepherd@state.nm.us
Diana Sainz Records Manager & Public Records Officer	(505) 476-3433	diana.m.sainz@state.nm.us
David Ohoi Senior Reclamation Specialist and Supervisor Soil Scientist	(505) 476-3432	david.ohori@state.nm.us
Joe Vinson Senior Reclamation Specialist Soil Scientist	(505) 476-3414	joe.vinson@state.nm.us
James Hollen Senior Reclamation Specialist Geologist/Hydrologist	(505) 476-3436	james.hollen@state.nm.us
Chris Eustice Senior Environmental Engineer Geologist/Hydrologist	(505)476-3438	chris.eustice@state.nm.us
Charles Schultz Reclamation Specialist Wildlife Biologist	(505) 476-3439	charles.schultz@state.nm.us
David Ennis Senior Reclamation Specialist Geologist/Hydrologist	(505)476-3434	david.ennis@state.nm.us

**\*\*\*\*\* This page intentionally left blank. \*\*\*\*\***

## **Appendix 1. Mining Operations in New Mexico as of December 2010**

**\*\*\*\*\* This page intentionally left blank. \*\*\*\*\***

**Table 10. Regular Existing Mines as of December 2010**

Permit No.	Mine Name	Operator	Permit Status	Mining Status	Commodity
BE001RE	Tijeras Mine and Mill	GCC Rio Grande, Inc.	Approved	Active Mining, Active Reclamation	Limestone
CA005RE	Challenge Mine and Mill	Challenge Mining Company	Pending	Permanent Closure, Reclamation Pending	Gold, Silver
CI002RE	Mount Taylor Mine	Rio Grande Resources Corporation	Approved	Standby	Uranium
CI005RE	Tinaja Pit Mine	C & E Concrete, Inc	Approved	Active Mining	Limestone
CI007RE	JJ No. 1 / L Bar Mine	Rio Tinto AuM Company	Approved	Permanent Closure, Reclaimed Awaiting Release	Uranium
GR001RE	Pinos Altos Mine	Freeport-McMoRan Cobre	Approved	Permanent Closure, Reclaimed Awaiting Release	Copper
GR002RE	Continental Mine and Mill	Freeport-McMoRan Cobre	Approved	Standby	Copper
GR006RE	Chino Limestone Mine	Freeport-McMoRan Chino	Approved	Permanent Closure, Reclaimed Awaiting Release	Limestone
GR007RE	Little Rock Mine	Freeport-McMoRan Tyrone	Approved	Active Mining	Copper
GR008RE	Jersey Lily, Snowflake and Virtue Mines	Freeport-McMoRan Tyrone	Approved	Permanent Closure, Reclaimed Awaiting Release	Silica Flux
GR009RE	Chino Mine and Mill	Freeport-McMoRan Chino	Approved	Active Mining, Active Reclamation	Copper, Gold, Silver, Molybdenum
GR010RE	Tyrone Mine and Mill	Freeport-McMoRan Tyrone	Approved	Active Mining, Active Reclamation	Copper
GR020RE	Georgetown Mine	Sierra Corporation	Approved	Permanent Closure, Reclaimed Awaiting Release	Copper, Gold, Silver
GR028RE	Center Mine	Douglas E. Hanson	Approved	Active Mining	Silica Flux
HI001RE	Lordsburg Mine and Mill	Lordsburg Mining Company	Approved	Active Mining	Gold
HI002RE	Brockman Mine	Freeport-McMoRan Chino	Approved	Permanent Closure, Reclaimed Awaiting Release	Silica Flux

Permit No.	Mine Name	Operator	Permit Status	Mining Status	Commodity
LU001RE	Deming Jigging Mill	C.E. Minerals / Mulcoa	Approved	Permanent Closure, Reclaimed Awaiting Release	Manganese
LU008RE	Cyprus Deming Tailings Impoundment	Freeport-McMoRan Chino	Approved	Permanent Closure, Reclaimed Awaiting Release	Copper, Zinc, Lead
LU009RE	ASARCO Deming Mill	ASARCO Multi-State Custodial Trust (Le Petomane XXV, Inc.)	Approved	Permanent Closure, Reclaimed Awaiting Release	Copper, Zinc, Lead
MK004RE	Northeast Church Rock Mine	United Nuclear Corporation	Pending	Permanent Closure, Active Reclamation	Uranium
MK005RE	Section 27 Mine	United Nuclear Corporation	Approved	Permanent Closure, Active Reclamation	Uranium
MK006RE	St. Anthony Mine	United Nuclear Corporation	Pending	Permanent Closure, Reclamation Pending	Uranium
MK009RE	Old Stope Leach Mine	Rio Algom, LLC	Approved	Permanent Closure, Reclaimed Awaiting Release	Uranium
RA004RE	Rocky Mountain Mine	CR Minerals, LLC	Approved	Active Mining; Active Reclamation	Pumice
RA005RE	Velarde Mill	Oglebay Norton Specialty Minerals	Approved	Permanent Closure, Reclaimed Awaiting Release	Mica
SA001RE	Las Conchas/El Cajete Mine	Copar Pumice Company	Approved	Permanent Closure, Reclaimed Awaiting Release	Pumice
SA002RE	Clod Buster Mine and Mill	Agronics, Inc.	Pending	Permanent Closure	Humate
SA003RE	Nacimiento Mine	Leaching Technology, Inc.	Denied	Permanent Closure	Copper
SF002RE	Cunningham Hill Mine	LAC Minerals Company	Approved	Permanent Closure, Reclaimed Awaiting Release	Gold
SI006RE	Zeolite Mine and Mill	St. Cloud Mining Company	Approved	Active Mining, Active Reclamation	Zeolites
SO001RE	Socorro Perlite Mine and Mill	Dicaperl Corporation	Approved	Active Mining, Active Reclamation	Perlite
TA001RE	Questa Mine and Mill	Chevron Mining Inc.	Approved	Active Mining, Active Reclamation	Molybdenum
TA002RE	El Grande Mine and Mill	Dicaperl Corporation	Approved	Active Mining, Active Reclamation	Perlite



Permit No.	Mine Name	Operator	Permit Status	Mining Status	Commodity
TA003RE	U. S. Hill Mine	Pueblo of Picuris	Approved	Permanent Closure, Reclaimed Awaiting Release	Mica
TA005RE	No Agua Mine and Mill	Harborlite Corporation	Approved	Active Mining	Perlite

<b>Total Number of Regular Existing Mine Permit Applications</b>	<b>35</b>
Number of Regular Existing Mine Permits Approved	30
Number of Regular Existing Mine Permits Pending	4
Number of Regular Existing Mine Permits Denied	1

**Table 11. Regular New Mines as of December 2010**

<b>Permit No.</b>	<b>Mine Name</b>	<b>Operator</b>	<b>Permit Status</b>	<b>Mining Status</b>	<b>Commodity</b>
CI008RN	La Jara Mesa Mine	Laramide Resources Inc.	Pending	Under Development	Uranium
MK025RN	Roca Honda Mine	Roca Honda Resources, LLC	Pending	Under Development	Uranium
OT001RN	Wind Mountain Quarry Mine	Addwest Minerals, Inc.	Withdrawn	Permanent Closure	Nepheline Syenite
SI004RN	Copper Flat Mine	Alta Gold Company	Withdrawn	Permanent Closure	Copper, Gold
SI027RN	Copper Flat Mine	New Mexico Copper Corporation	Pending	Under Development	Copper

<b>Total Number of Regular New Mine Permit Applications</b>	<b>5</b>
Number of Regular New Mine Permits Approved	0
Number of Regular New Mine Permits Pending	3
Number of Regular New Mine Permits Withdrawn	2

**Table 12. Minimal Impact Existing Mines as of December 2010**

Permit No.	Mine Name	Operator	Permit Status	Mine Status	Commodity
CA003ME	Hiawatha And Little Jim Mine	Volcanic Stone Company	Approved	Permanent Closure, Reclaimed Awaiting Release	Tin
GR011ME	Summit Mine	Lordsburg Mining Company	Approved	Active Mining	Gold
GR016ME	Malone Mine	Louis Osmer	Released	Permanent Closure, Reclaimed and Released	Silica
GR018ME	Banks (Lost New Summit No. 1) Mine	Micrex Development Corporation	Approved	No Mining, No Reclamation	Silica Flux, Silver
GR019ME	Boston Hill Mine	Town Of Silver City	Released	Permanent Closure, Reclaimed and Released	Manganese
GR025ME	Mathis Lime Quarry Mine	Mathis and Mathis Mining Company,	Approved	Permanent Closure, Active Reclamation	Limestone
GR029ME	Mount Royal Mine and Mill	Micrex Development Corporation	Approved	No Mining, No Reclamation	Gold
GR030ME	Chemical Lime Mine & Mill	Chemical Lime Company	Approved	Permanent Closure, Active Reclamation	Silica Flux
HI008ME	Volcano Mine	Dane Mining & Exploration	Approved	Permanent Closure, No Reclamation	Gold, Silver, Silica
LI001ME	Warner Gulch Placer Mine	American Eagle Mining Company	Approved	Active Mining, Active Reclamation	Gold
LI005ME	Capitan Iron Mine	El Capitan Ltd.	Approved	Under Development	Iron
MK003ME	Star Lake Menefee Mine	Menefee Mining Corporation	Approved	Active Mining	Humate
MK007ME	Star Lake Mesa Verde Mine	Mesa Verde Resources	Approved	Active Mining	Humate
MK008ME	Pueblo Alto Mine	Mesa Verde Resources	Approved	Active Mining	Humate
MK024ME	Section 12 Mine	Southwest Resources Inc.	Pending	Under Development	Uranium
RA001ME	Northstar Mine	Northstar Living Trust	Pending	Under Development	Gold
RA003ME	Cullum Claims Mine	Pueblo of Santa Clara	Approved	Permanent Closure	Pumice
RA006ME	General Pumice Mine	City Of Espanola	Pending	Permanent Closure, Active Reclamation	Pumice

Permit No.	Mine Name	Operator	Permit Status	Mine Status	Commodity
SA005ME	Menefee Mill	Menefee Mining Corporation	Approved	Active Mining	Humate
SA010ME	Mesa Verde Resources Mill	Mesa Verde Resources	Released	Permanent Closure, Reclaimed and Released	Humate
SF001ME	San Pedro Mine and Mill	St. Cloud Mining Company	Approved	Permanent Closure, Reclaimed Awaiting Release	Copper, Gold
SF003ME	Silver Silica Mine	Oro Blanco Mining Company, LLC	Approved	Active Mining, Active Reclamation	Silica
SF006ME	CR Minerals Mill	CR Minerals Company	Released	Permanent Closure, Reclaimed and Released	Pumice
SI001ME	St. Cloud US Treasury Mine	St. Cloud Mining Company	Approved	Permanent Closure, Reclaimed Awaiting Release	Silica, Gold, Silver
SI007ME	Midnight Mine	Larry L. Harris	Approved	Permanent Closure, No Reclamation	Gold, Copper
VA001ME	Lucero Quarry Mine	New Mexico Travertine, Inc.	Approved	Active Mining	Travertine

<b>Total Number of Minimal Impact Existing Mine Permit Applications</b>	<b>26</b>
Number of Minimal Impact Existing Mines Approved	19
Number of Minimal Impact Existing Mines Released	4
Number of Minimal Impact Existing Mines Pending	3

**Table 13. Minimal Impact New Mines as of December 2010**

Permit No.	Mine Name	Operator	Permit Status	Mine Status	Commodity
CA002MN	Deadwood / Last Chance Mine	Micrex Development Corporation	Approved	No Mining, No Reclamation	Silica, Silver
CI003MN	ANP No. 2 Mine	Denali Enterprises	Approved	No Mining, No Reclamation	Travertine
CI004MN	Haskani Mine	Denali Enterprises	Approved	Active Mining	Travertine
CI006MN	Ray Claims No. 4 and No. 6 Mines	International Stone Company	Approved	Active Mining	Travertine
DA002MN	Shamrock Environmental Mine	Espanola Transit Mix Company	Approved	Permanent Closure, Reclaimed Awaiting Release	Precious Metals
DA003MN	Alley Gypsum Mine	Alley Gypsum Mining	Approved	Active Mining	Gypsum
GR012MN	KB Mine	Southwest Silica Flux Co., Inc.	Approved	Permanent Closure, Reclaimed Awaiting Release	Silica
GR022MN	Farmers Back Breaker Mine	Larry Moore	Enforcement	Enforcement, No Reclamation	Gold
GR023MN	Copper Conglomerate Mine	Copper Creek Exploration	Denied		Copper
GR031MN	Toro Mine	Toro Mining and Minerals, Inc.	Released	Permanent Closure, Reclaimed and Released	Perlite
GR036MN	Grooms Placer Mine	Mother Lode Mining Company	Approved	Under Development	Gold
GR056MN	McCauley Perlite Mine	St. Cloud Mining Company	Released	Never Mined	Perlite
GR058MN	Billali Mine	Richard and Leslie Billingsley	Approved	Under Development	Gold, Silver
HI004MN	KM Mine	Southwest Silica Flux Company, Inc.	Approved	Permanent Closure, Reclaimed Awaiting Release	Silica
LU011MN	Herb Bailey No. 1 Mine	Boot Heel Minerals	Enforcement	Enforcement, No Reclamation	Turquoise
LU012MN	Herb Bailey No. 2 Mine	Boot Heel Minerals	Enforcement	Enforcement, No Reclamation	Turquoise
LU015MN	Hooper Quarry	St. Cloud Mining Company	Pending	Active Mining	Dolomite
MK010MN	U-Mate Mine	U-Mate International, Inc.	Approved	Active Mining	Humate

<b>Permit No.</b>	<b>Mine Name</b>	<b>Operator</b>	<b>Permit Status</b>	<b>Mine Status</b>	<b>Commodity</b>
MK011MN	Morningstar Mine	Morningstar Corporation	Approved	Permanent Closure, No Reclamation	Humate
MK012MN	Jaramillo Humate Mine	Anasazi Stone, LLC	Pending	Under Development	Humate
OT002MN	B.O.W. Mine	B.O.W. Corporation	Approved	Under Development	Garnet
OT003MN	Joel Nanez Mine	Joel Nanez	Withdrawn		Gypsum
OT005MN	Orogrande Placer Gold Mine	W.W. Mining & Production	Pending	Under Development	Gold
SA004MN	Copar South Pit Mine	Copar Pumice Company	Approved	Active Mining	Pumice
SA006MN	Copper City Mine	Crystal Mining Corp.	Approved	Enforcement, No Reclamation	Humate
SA009MN	Eagle Mesa Mine	Rammsco Operations, Inc.	Approved	Active Mining	Humate
SA011MN	San Luis Mine	Horizon Ag-Products	Approved	Active Mining	Humate
SA012MN	Horizon-Ag Products Cuba Mill	Horizon Ag-Products	Pending	Active Milling	Humate
SI005MN	Burbank Canyon Mine	Cornerstone Investment Circle, LLC	Approved	Under Development	Precious Metals
SI020MN	Coyote Cliff No. 1 Mine	Greg Richards	Approved	Active Mining	Zeolites
SI021MN	Coyote Cliff No. 2 Mine	Greg Richards	Approved	Active Mining	Zeolites
SI022MN	Smugglers Mine	Gordon Walters	Denied		Gold, Silver
SI023MN	Franklin Mine	Gordon Walters	Denied		Gold, Silver
SI024MN	Baxter (Badger) Claim Mine	Gordon Walters	Denied		Gold, Silver
SI025MN	Harding Mine	Wayne M. Rutland	Pending	Under Development	Gold, Silver
SI026MN	Granite Wash Mine	Earl G. Riggs	Enforcement	Enforcement, No Reclamation	Gold
SJ001MN	Morningstar Mill	Morningstar Corporation	Pending	Active Mining	Humate
SJ002MN	Chaco Limestone Quarry	John Freidline	Approved	Active Mining	Limestone

Permit No.	Mine Name	Operator	Permit Status	Mine Status	Commodity
SO002MN	Sais Quarry Mine	New Mexico Travertine	Approved	Active Mining	Schist
SO004MN	Alamosa Mine	Tognoni & Lufkin	Enforcement	Enforcement, No Reclamation	Beryllium
SO005MN	San Lorenzo Claim Mine	Tim Apodaca	Denied		Gold
SO012MN	San Antonio Pumice Pit	Bobby Garcia Trucking	Withdrawn		Pumice

<b>Total Number of Minimal Impact New Mine Permit Applications</b>	<b>42</b>
Total Number of Minimal Impact New Mine Permits Approved	22
Total Number of Minimal Impact New Mine Permits Released	2
Total Number of Minimal Impact New Mine Permits Pending	6
Total Number of Minimal Impact New Mine Permits Withdrawn	2
Total Number of Minimal Impact New Mine Permits in Enforcement	5
Total Number of Minimal Impact New Mine Permits Denied	5

**Table 14. Regular Exploration Projects as of December 2010**

Permit No.	Exploration Project Name	Operator	Commodity	Status	Approval Date
CI014ER	Cebolleta Exploration Project	Neutron Energy	Uranium	Pending	
GR039ER	Lone Mountain Project	Copper One (USA) Inc.	Gold, Silver, Copper	Pending	
HI013ER	Lordsburg Exploration Project II	Entree Gold, Inc.	Gold, Gold	Pending	
LI003ER	Bonito Gold & Silver Project	David Dunn	Gold, Silver	Withdrawn	
LI009ER	El Capitan Exploration Drilling Project	El Capitan Precious Metals, Inc.	Precious Metals	Pending	
LU016ER	Victorio Project	Galway Resources US, Inc.	Metals	On Hold	
MK023ER	Marquez Canyon Confirmation Drill Project	Neutron Energy	Uranium	Approved	03/31/2009 Renewed 3/4/2010
SA003ER	Georgia Claims Project	Centex American Gypsum	Gypsum	Released	07/31/1996
SF005ER	Carache Canyon 4 Project	LAC Minerals (USA) Inc.	Gold	Withdrawn	
SO014ER	Sullivan Ranch Project	BE Resources Inc.	Bertrandite	Approved	04/26/2010 Revised 10/18/2010
TA001ER	Pilar Project	Golden Rod Mining	Gold	Withdrawn	

<b>Total Number of Regular Exploration Permit Applications</b>	<b>11</b>
Number of Regular Exploration Permits Approved	2
Number of Regular Exploration Permits Released	1
Number of Regular Exploration Permits Pending	4
Number of Regular Exploration Permits On Hold	1
Number of Regular Exploration Permits Withdrawn	3



**Table 15. Minimal Impact Exploration Projects as of December 2010**

<b>Permit No.</b>	<b>Exploration Project Name</b>	<b>Operator</b>	<b>Commodity</b>	<b>Status</b>	<b>Approval Date</b>
BE001EM	HRI Inc. Exploration Project	HRI, Inc.	Uranium	Released	03/19/1998
CA004EM	Gutapa Exploration Project	Sunburst Mining Company	Gold, Platinum	Released	04/19/1997
CA005EM	Cow Springs Exploration Project	Sunburst Mining Company	Precious Metals	Withdrawn	
CA006EM	Deep Creek Project	Derek Kuester	Gold, Silver, Copper	Released	05/19/1998
CA007EM	Faith Mining Association Project	Faith Mining Association	Gold, Rare Earths	Released	11/01/2004
CA008EM	Southwest Research No. 1 Project	Southwest Research & Development	Gold, Silver, Platinum	Released	11/23/1998
CA009EM	Apache Camp Exploration	Faith Mining Association	Gold	Released	11/01/2004
CA011EM	Sunburst/Deadwood Exploration Project	Micrex Development	Gold, Silver, Copper	Released	08/14/2007 Renewed 06/18/2008
CA012EM	Ormor No. 1 Lode Mining Claim	Heath Technologies, Inc.	Gold	Withdrawn	
CA013EM	Lone Pine Hill Mineral Project	World Industrial Minerals	Gold	Withdrawn	
CA014EM	Deer Claims Exploration Project	Vane Minerals Plc	Uranium	On Hold	
CA015EM	Baca Project	Red Basin, LLC	Uranium	Pending	
CA016EM	White Mesa Project	Red Basin, LLC	Uranium	Pending	
CA017EM	Sunburst Deadwood Drilling	Mountain Rio Resources	Gold, Silver, Copper	Pending	
CA018EM	Mogollon Project	Columbus Silver (U.S.) Corp.	Gold, Silver	Released	01/08/2010
CA019EM	Mogollon 2 Project	Columbus Silver (U.S.) Corp.	Gold, Silver	Pending	
CI001EM	ANP No. 1 Project	Acid Neutralization Product, Inc.	Travertine	Released	10/26/1995
CI002EM	La Jara Mesa Confirmation Drill Project	Anaconda Resources, Inc.	Uranium	Released	05/19/1998
CI004EM	Twenty Two Project	Jim Herrison	Travertine	Released	11/19/2003
CI008EM	La Jara Mesa Exploration Project	Laramide Resources, Inc.	Uranium	Released	10/12/2006 Renewed 10/18/2007
CI009EM	La Jara Mesa Extension Project	Urex Energy Corporation	Uranium	Denied	
CI010EM	Treeline II Exploration Project	Western Energy Development Corp.	Uranium	Denied	
CI0011EM	DD No. 1 Exploration Project	Rampart Resources, Inc.	Uranium	Withdrawn	
CI012EM	Armijo Project	Grants Ridge Joint Venture	Uranium	Released	11/20/2009
CI013EM	F-33 Project	Grants Ridge Joint Venture	Uranium	Released	11/20/2009
DA001EM	Alivio Exploration Project	Louis Gonzales	Gold	Released	04/21/2003

<b>Permit No.</b>	<b>Exploration Project Name</b>	<b>Operator</b>	<b>Commodity</b>	<b>Status</b>	<b>Approval Date</b>
DA002EM	Golden Link Exploration Project	Don Snodgrass	Gold, Silver	Released	05/05/2005
GR001EM	Deadman Canyon Project	Copper Creek Exploration Ltd.	Copper	Released	03/23/1995
GR002EM	Pinos Altos Project	Pinos Altos Gold Exp. Inc.	Gold	Released	01/19/1996
GR004EM	Tyrone West Drilling Program	Copper Creek Exploration Ltd.	Copper	Released	01/05/1996
GR005EM	Gold Rush Project	Harvey Lee Harvey	Gold, Silver	Released	12/31/1999
GR006EM	Navarro Mineral Project	D. Gilbert Navarro	Gold	Released	10/31/1996
GR007EM	Lone Mountain Project	Lone Mountain Mining Ltd.	Copper	Released	12/08/1996
GR009EM	Good Cheer Group Project	Don Yelsma	Gold, Silver	Released	12/19/1997
GR010EM	Beaumont Silver Mine Project	Lou Osmer	Silver	Released	06/08/2003 Renewed 6/8/2006
GR011EM	Shamrock Gold Mine Project	Lou Osmer	Gold	Released	06/08/2003
GR012EM	Astrologer Gold Mine Project	Lou Osmer	Gold	Released	06/08/2003
GR013EM	Chocolate Peak Project	Harold Hoegberg	Gold, Silver, Copper	Released	08/06/1998
GR014EM	Copper Mountain South Project	Phelps Dodge Tyrone, Inc.	Copper	Released	07/19/2000
GR015EM	Golden Eagle Exploration Project	John Bernal	Gold	Released	03/22/2005
GR017EM	Toro Mining Exploration Project	Charles Grey	Perlite	Released	09/19/2001
GR018EM	Emma Exploration Drilling Project	Phelps Dodge Tyrone, Inc.	Copper	Released	09/30/2001
GR019EM	Southwest Area Drilling Project	Phelps Dodge Tyrone, Inc.	Copper	Released	09/30/2001
GR020EM	Nellie Bly Exploration Project	Phelps Dodge Tyrone, Inc.	Copper	Released	12/19/2002
GR021EM	Hachita Project	Ken Krahulec	Precious Metals	Released	11/20/2002
GR022EM	Tyrone Peak Project	Phelps Dodge Tyrone, Inc.	Copper	Released	12/18/2002
GR023EM	Brockman Exploration Project	Kennecott Exploration Company	Gold	Released	03/27/2003
GR024EM	Don Snodgrass Project	Don Snodgrass	Silver, Gold	Released	01/27/2005 Renewed 06/08/2006
GR025EM	Lawrence Pierce Project	Lawrence Pierce	Gold	Released	08/15/2005
GR026EM	Gutapa Project	Sunburst Mining Corp.	Gold, Platinum	Released	01/09/1995
GR027EM	Neglected Mine Project	William Hinkle, Jr.	Gold, Silver, Copper	Released	07/14/2004 Renewed 10/23/2006 Modified 10/05/2007 Renewed 06/24/2008
GR028EM	Thornwell Exploration Project	Thornwell Rogers	Silver, Copper, Zinc	Released	12/08/2005

Permit No.	Exploration Project Name	Operator	Commodity	Status	Approval Date
GR029EM	Galway Lone Mountain Project	Galway Resources US, Inc.	Copper, Lead, Zinc	Released	03/01/2007
GR030EM	Malone Project	Evolving Gold Corporation	Gold, Silver	Released	07/30/2007
GR031EM	Gold Lake Prospect Project	New Mexico General Minerals LLC	Copper	Released	10/22/2007
GR032EM	Galway Lone Mountain Modification 2007	Galway Resources US, Inc.	Copper, Lead, Zinc	Released	08/17/2007
GR033EM	Continent Lone Mountain	Continent Resources Inc.	Gold, Silver, Copper	Approved	12/05/2008 Renewed 12/10/2009 Renewed 12/05/2010
GR034EM	Malone Exploration Project No. 2	Evolving Gold Corporation	Gold	Released	01/22/2009
GR035EM	Gunsight Exploration Project	Philip Chambless	Turquoise	Approved	10/21/2009 Renewed 9/22/2010
GR036EM	Oro Project	Addwest Minerals, Inc.	Gold, Silver, Copper	Approved	06/19/2009
GR037EM	Santo Nino Claim	Code Breaker Enterprises Inc.	Gold	Pending	
GR038EM	LT Ranch Project	Copper One (USA) Inc.	Gold, Silver, Copper, Lead, Zinc	Approved	05/10/2010
HI001EM	San Simon Project	Cyprus Metals Company	Copper	Released	03/07/1995
HI002EM	Beck Mine Project	Beck Silver Mines	Gold, Silver	Released	02/27/1995
HI003EM	Sterling Project	Noranda Exploration, Inc.	Copper	Released	01/05/1996
HI004EM	Willow Draw Project	Mark Osterberg	Copper	Released	03/25/1996
HI005EM	Comstock Project	Bush Mining And Ranching	Gold, Silver	Withdrawn	
HI006EM	Hachita Peak Project	Teck Resources	Gold	Released	10/31/1996
HI007EM	Apache Hills Project	Madison Resources (NM), Inc.	Metals	Released	04/30/1997
HI009EM	Lordsburg Exploration Project	Entree Gold, Inc.	Gold, Copper	Approved	10/17/2008
HI010EM	Gold Hill Project	Entree Gold, Inc.	Gold, Copper	Approved	09/01/2009
HI011EM	Lordsburg West	AVEN Associates LLC	Gold, Silver, Copper	Released	03/25/2010
HI012EM	Purple Heather	Roderick McKeag	Silver, Copper, Lead, Zinc	Pending	
LI001EM	Vera Cruz Project	Placer Dome, Inc.	Gold, Copper	Released	11/23/1994
LI004EM	M & R Project	Richard Mendoza	Rare Earth	Released	09/22/2003
LI008EM	El Capitan Reclamation Project	El Capitan Precious Metals, Inc.	Precious Metals	Released	10/03/2008
LI010EM	Outlaw Exploration Project	Red Basin, LLC	Rare Earth	Pending	
LI011EM	Outlaw # 2 Project	Red Basin, LLC	Rare Earth	Pending	

Permit No.	Exploration Project Name	Operator	Commodity	Status	Approval Date
LI012EM	Outlaw #3 Project	Red Basin, LLC	Rare Earth	Pending	
LU001EM	Victorio Project	Lone Mountain Mining Ltd.	Gold	Released	10/31/1996
LU002EM	Homer's Little Diggins Project	Homer Nute	Agate	Released	05/19/2005 Renewed 05/23/2006
LU003EM	Mahoney Exploration Project	James M. Telford	Zinc	Released	05/17/2005
LU010EM	Cameo Exploration Project	Philip Chambless	Turquoise	Released	10/17/2005
LU013EM	Kling Exploration Project	C.A. Kling	Agate	Released	12/11/2006
LU014EM	Victorio Mountain Exploration 2006	Galway Resources US, Inc.	Silver, Gold, Etc	Released	08/23/2006
LU015EM	Victorio Mountain Exploration 2007	Galway Resources US, Inc.	Metals	Approved	09/17/2007 Renewed 10/21/2008 Renewed 10/23/2009
MK009EM	Gamerco Project	U Mate International	Humate	Released	07/31/1997
MK010EM	West Ambrosia Project	HRI, Inc.	Uranium	Released	05/13/1998
MK011EM	Andrea Corporation Project	Hal Collins	Humate	Released	09/16/2004
MK012EM	Treeline Exploration Project	Western Energy Development Corp.	Uranium	Released	04/12/2006
MK013EM	Ambrosia Lake Exploration	Neutron Energy	Uranium	Released	02/27/2007
MK014EM	Roca Honda Exploration	Strathmore Minerals Corp.	Uranium	Released	05/09/2007
MK015EM	Church Rock Exploration Project	Strathmore Minerals Corp.	Uranium	Withdrawn	
MK016EM	Hosta Butte Section 3 Project	Quincy Energy Corp.	Uranium	Denied	
MK017EM	Crownpoint Section 19 Project	Quincy Energy Corp.	Uranium	Denied	
MK018EM	Treeline III Exploration Project	Western Energy Development Corp.	Uranium	Denied	
MK019EM	Section 12 Exploration Project	Southwest Resources Inc.	Uranium	Denied	
MK020EM	San Mateo Mesa Exploration Project	Uranium Energy Corp.	Uranium	Denied	
MK021EM	Section 11 Exploration	Southwest Resources Inc	Uranium	Withdrawn	
MK022EM	Roca Honda Sections 5, 9 and 10 Project	Roca Honda Resources	Uranium	Withdrawn	
MK025EM	Section 13 ISR Exploration	Uranium Resources Inc.	Uranium	Approved	11/10/2008 Renewed 09/23/2009 Renewed 07/20/2010
MK026EM	Roca Honda Project Section 10	Roca Honda Resources	Uranium	Denied	
MK027EM	West Ranch Exploration Project	Ree-Co Uranium LP	Uranium	Enforcement	

Permit No.	Exploration Project Name	Operator	Commodity	Status	Approval Date
MK028EM	Elizabeth Claims	Neutron Energy	Uranium	Approved	09/04/2009 Renewed 08/05/2010
MK029ER	Eric #1 Project	Bob March	Uranium	On Hold	
MK031EM	North Zia Project	Cibola Exploration Inc.	Uranium	Denied	
MK032EM	Star Lake MVR Exploration	Mesa Verde Resources	Humate	Released	09/16/2009
MK033EM	Pueblo Alto Exploration	Mesa Verde Resources	Humate	Released	09/16/2009
MK034EM	Mesa Montanosa Exploration	Grants Ridge Joint Venture	Uranium	Pending	
OT002EM	Oro Grande Project	Lone Mountain Mining Ltd.	Gold, Copper	Released	12/10/1996
OT003EM	Metalline Mining Exploration Project	Metalline Mining Co.	Garnet	Released	02/19/2002 Renewed 12/06/2005
OT004EM	B.O.W Exploration Project	B.O.W. Corporation	Garnet	Released	01/07/2007
RA002EM	Mid Way Exploration Project	Al Puckett	Gold	Released	08/23/2004
SA001EM	Los Griegos Project	Copar Pumice Company	Pumice	Released	07/07/1995
SA004EM	Vallecitos Drilling Project	Copar Pumice Company	Pumice	Released	09/30/1997
SA005EM	Rio Puerco Exploration Project	Uranium Co. of NM	Uranium	Pending	
SA012EM	Lily Exploration Project	Uranium Company of NM	Uranium	Released	09/07/2007
SA013EM	San Luis Humate Exploration	Horizon Ag	Humate	Enforcement	03/24/2009
SA014EM	San Luis Humate Exploration #2	Horizon Ag	Humate	Pending	
SF001EM	Cerro de Oro Nos. 2 and 11 Project	Joan Oller	Gold	Released	09/12/1994
SF002EM	Jack's Place Project	Jack Nelson	Gold	Released	09/12/1994
SF003EM	Three B's Nos. 1 and 2 Project	Brian Kew	Gold	Released	09/12/1994
SF004EM	Rafelita Project	Joseph Gonzales	Gold	Released	09/12/1994
SF006EM	Jones Hill Project	Champion Resources	Silver, Gold	Released	11/10/1994
SF007EM	NMGMA Project	Texas Gold - NMGMA	Gold	Released	11/01/1996
SF008EM	Jones Hill Project	Davenport Minerals Corp.	Gold, Silver, Copper	Released	04/19/1999
SF009EM	Bixby Exploration Project	Paul Plunkett	Gold	Pending	
SI001EM	Hillsboro Project	Placer Dome, Inc.	Gold, Silver, Copper	Released	11/23/1994
SI002EM	Hackberry Draw Project	Grubstake Mining & Exploration, Inc.	Gold	Released	02/09/1995
SI006EM	Log Cabin Project	Troy L. Grimes	Gold, Silver	Withdrawn	
SI007EM	Drolte Mine Project	Drolte Mining	Metals	Released	03/08/1995

Permit No.	Exploration Project Name	Operator	Commodity	Status	Approval Date
SI008EM	Colossal Project	Ed Rudder	Gold	Released	11/30/1996
SI009EM	Gold Run No. 1 Placer Project	John D. Whiteside	Gold	Released	06/28/1995
SI010EM	Deep Pockets Nos. 1 and 2 Project	Arthur Hartman	Gold	Released	04/18/1996
SI011EM	Drotle Claims Project	Mary Alice Drolte	Gold	Released	04/09/1996
SI012EM	B. Franklin Claims Project	Dan Dodl	Gold, Silver, Platinum	Released	06/19/1997
SI013EM	Gold Silver Exploration Project	Dan Medley	Gold	Released	06/30/1998
SI014EM	Dictator Mine Project	Megastar Ventures	Gold, Silver, Copper	Released	07/29/1998
SI015EM	Sonny's Tailings Project	Ken Schmatjen	Gold	Released	07/13/2004
SI016EM	Iron Mountain Exploration Project	Great Western Exploration	Bertrandite	Released	01/18/2004 Renewed 04/03/2006
SI017EM	East of Winston Exploration Project	Great Western Exploration	Rare Earths	Released	04/03/2006
SI018EM	Franklin Mine Project	Sonny Riggs	Gold	Released	05/24/2006
SI019EM	Bat Cave Canyon Project	Sonny Riggs	Gold, Silver	Released	02/13/2006
SI020EM	Socorro 2006A Exploration Project	Melvin R. Mathis	Gold, Precious Metals	Released	07/26/2006 Renewed 06/26/2007
SI021EM	Rifleshoot Project	Geoinformatics Alaska Exploration	Silver, Copper, Zinc	Released	09/09/2008
SI022EM	Copper Flat Exploration Project	New Mexico Copper Corp.	Copper	Released	12/21/2009
SI023EM	Argo #7	Joseph Jordon, Alpha Mining Co.	Gold	Denied	
SI024EM	Granite Canyon #3	Dominion Alliance	Gold	On Hold	
SI025EM	Copper Flat Exploration 2	New Mexico Copper Corp.	Copper	Pending	
SO001EM	San Juan Exploration Shaft	Al Meyers	Gold, Silver	Released	12/31/1999
SO002EM	Northside Drilling Project	Kalahari Exploration LLC	Copper	Released	08/31/2000
SO003EM	San Juan Drilling Project	Kalahari Exploration LLC	Copper, Gold	Withdrawn	
SO004EM	Alamosa Exploration Project	Bob Lufkin and David Tognoni	Bertrandite	Enforcement	
SO005EM	Andrea Ann Exploration Project	Cliff Strieber	Fluorite	Approved	03/22/2005 Renewed 04/04/2006 Renewed 11/13/2007 Renewed 10/31/2008
SO006EM	Sullivan Ranch Exploration Project	Great Western Exploration	Rare Earth	Denied	
SO007EM	Burma Exploration Project	Great Western Exploration	Bertrandite	Released	05/05/2005

Permit No.	Exploration Project Name	Operator	Commodity	Status	Approval Date
SO008EM	Socorro 2005A Exploration Project	Socorro Minerals Corp.	Gold, Precious Metals	Released	05/05/2005
SO010EM	Sullivan Ranch (Revised) Project	Great Western Exploration	Bertrandite	Denied	
SO011EM	Bingham Exploration Project	Ramon Demark	Fluorite	Released	08/23/2006
SO012EM	Riley Exploration Project	Max Resources Corporation	Uranium	Released	05/11/2007
SO013EM	Riley Exploration Project No. 2	Max Resources Corporation	Uranium	Released	05/27/2008
SO015EM	Iron Mountain Exploration Project	Be Resources Inc.	Bertrandite	Pending	
SO016EM	Burma Exploration Project	Be Resources Inc.	Bertrandite	Pending	
SO017EM	Richard's Glory Hole	Alan Perryman	Goethite, Hematite	Approved	09/13/2010
SO018EM	Ginger M Project	Red Basin, LLC	Rare Earth	Pending	
TA002EM	Champion Project	St. Mary Mineral Inc.	Copper	Released	08/1/1995
TA002EM	Champion Project	Summo USA Corp.	Copper	Released	04/19/1996
TO001EM	3 in 1 Project	George Ramirez	Copper	Released	07/31/1996
TO002EM	3 in 1 Project	Ciro Ramirez	Copper	Released	06/22/1998

<b>Total Number of Minimal Impact Exploration Project Applications</b>	<b>169</b>
Number of Minimal Impact Exploration Projects Approved	12
Number of Minimal Impact Exploration Projects Released	112
Number of Minimal Impact Exploration Projects Pending	16
Number of Minimal Impact Exploration Projects On Hold	4
Number of Minimal Impact Exploration Projects Withdrawn	10
Number of Minimal Impact Exploration Projects Denied	12
Number of Minimal Impact Exploration Projects Enforcement	3

**Table 16. General Permits as of December 2010**

<b>Permit No.</b>	<b>Name</b>	<b>Date Submitted</b>	<b>Date Issued</b>	<b>Location</b>
BE001WET	Robert Lipinski	08/11/2004	08/17/2004	Rio Grande
CI001DRY	International Stone Company	07/09/2002	07/15/2002	Cerro Verde
ED001DRY	Mark Hooper	05/01/2008	05/27/2008	10 miles south of White's City in the Yeso Hills; NE/4 Section 14, T26S,
ED002DRY	Mark Hooper	05/18/2009	06/01/2009	10 miles south of White's City in the Yeso Hills; NE/4 Section 14, T26S,
ED003DRY	Mark Hooper	06/14/2010	06/16/2010	10 miles south of White's City in the Yeso Hills; NE/4 Section 14, T26S,
GR020DRY	Ener G. Corp., Inc.	07/31/1997	08/07/1997	Near Chocolate Peak
GR022DRY	Cathy Heslet	03/23/1998	03/30/1998	Golden Duck
GR023WET	Weston Wolff	02/04/1998	03/11/1998	Black Sand Claim Nos. 1-6; Pa Chal Ma Claim
GR025DRY	John Bernal	05/04/1998	05/12/1998	Golden Eagle No. 1 Claim
GR029DRY	Paul Plunkett	04/21/1998	04/28/1998	Gold Gulch; T20S, R16W, Section 26
GR030DRY	John Huntress	04/06/1999	05/01/1999	American Turquoise; Section 35, T27S, R16W
GR031DRY	Samuel Munoz	07/15/1999	07/21/1999	Twin Sisters Creek
GR032DRY	Dana Bates	07/05/2000	07/08/2000	Near Pinos Altos
GR033WET	Weston Wolff	07/10/2000	07/24/2000	Gold Gulch
GR034WET	Weston Wolff	08/15/2001	08/21/2001	Gold Gulch
GR035WET	Weston Wolff	09/3/2002	09/04/2002	Gold Gulch
GR050WET	Robert Batchler	02/23/1998	02/26/1998	Black Sand No. 1 Claim
GR051DRY	Mark Welch	01/24/2003	02/17/2003	Steeple Rock Area
GR052WET	Weston Wolff	08/04/2003	08/04/2003	Gold Gulch
GR053DRY	John Scully	12/05/2003	12/17/2003	Grant County
GR054WET	Weston Wolff	08/02/2004	08/03/2004	Gold Gulch
GR055WET	Weston Wolff	09/15/2005	09/21/2005	Gold Gulch
GR056WET	Weston Wolff	08/15/2006	08/30/2006	Gold Gulch
GR057WET	Weston Wolff	08/09/2007	09/26/2007	Gold Gulch
GR058WET	Weston Wolff	08/29/2008	09/11/2008	Gold Gulch; S/2 Section 21,NW/4 Section 28 and NE/4 Section 27 T20S, R16W; Black Sand Nos. 1-6, Pa Chal Ma, and Wolf Clan Nos. 1-2 Claims
GR059DRY	Code Breaker Enterprises	08/04/2009	09/14/2009	NE/4 Section 32, T16S, R13W
LI027DRY	Paul Plunkett	04/21/1998	04/28/1998	Ancho Gulch; Section 4, T5S, R12E
LI028DRY	Amos Black III	06/07/1999	07/07/1998	Against the Wind, Ancho



Permit No.	Name	Date Submitted	Date Issued	Location
LI029DRY	Vincent Sanders	08/31/2007	10/01/2007	Section 4, T5S, R12E
LU001DRY	Homer Nute	05/27/2009	06/12/2009	N 32 02.793 W 107 56.571
MK001DRY	Ree-Co Uranium LP	05/27/2009	08/19/2009	Sections 4, 10 & 12, T14N, R11W; Sections 6, 8 & 18, T14N, R10W
MK002DRY	Grants Ridge Joint Venture	10/13/2010	PENDING	
OT031DRY	Harvey Snowden	08/26/1997	08/29/1997	Near Orogrande
OT032DRY	Harvey Snowden	08/31/1998	09/11/1998	Best Laugh Claim, Orogrande
OT033DRY	Amos Black III	06/07/1999	07/07/1998	Old Dry Placer No. 1, Orogrande
OT034DRY	Mike Pittman	05/16/2006	08/30/2006	Sections 4 & 5, T16S, R10E
OT035DRY	Daniel Curtis	06/27/2007	07/17/2007	Old Dry Placer No. 1; Section 10, T22S, R8E; Vicinity of Orogrande
RA001WET	Rhonda Shinpoch	04/28/1997	05/08/1997	Placer Creek
RA002WET	Ed Shinpoch	05/18/1998	06/02/1998	Placer Creek
RA003WET	Charles Alston	03/16/1998	03/30/1998	Placer Creek
RA004WET	Terry Nelson	04/21/1997	04/24/1997	Placer Creek
RA005WET	Donavon Maddox	05/19/1997	05/22/1997	Placer Creek
RA006WET	James White	05/07/1997	05/10/1997	Negrito Creek
RA007WET	Thomas Sena	05/19/1997	05/29/1997	Placer Creek, Apache Creek
RA008WET	Buell Williams	05/19/1997	05/29/1997	Tres Piedras Area
RA009WET	Arnold Hale	05/19/1997	05/29/1997	Placer Creek
RA011WET	Steven Hill	05/19/1997	05/29/1997	Placer Creek, Percha Creek
RA012WET	Lynn Files	05/19/1997	05/29/1997	Placer Creek
RA014WET	Philip Fattori	05/27/1997	05/27/1997	Placer Creek
RA015WET	Stuart Scantlin	06/03/1997	06/18/1997	Placer Creek
RA016WET	Jim Edwards	06/17/1997	06/18/1997	Placer Creek
RA017WET	Harold Phelps	06/25/1997	06/30/1997	Placer Creek
RA018WET	Robert Threlkeld	03/23/1998	03/30/1998	Placer Creek
RA019WET	Harold Conley	05/12/1998	06/11/1998	Placer Creek & Near Tusa Mountain
RA024WET	Bruce Gibson	02/11/1998	02/24/1998	Placer Creek
RA026WET	David Eckles	04/30/1998	05/11/1998	Placer Creek
RA030WET	Richard Freeze	06/26/1998	07/06/1998	Placer Creek
RA031Wet	Willy Skigen	06/26/1998	07/06/1998	Placer Creek

<b>Permit No.</b>	<b>Name</b>	<b>Date Submitted</b>	<b>Date Issued</b>	<b>Location</b>
RA032WET	Mike Cogburn	04/23/1999	05/15/1999	Placer Creek
RA033DRY	Richard Vondrak	05/11/1999	06/21/1999	Barela Canyon
RA034WET	Harold Phelps	05/24/1999	05/24/1999	Placer Creek
RA035WET	Amos Black III	06/07/1999	07/07/1998	Placer Creek Nos. 1-3
RA036WET	Mark Barber	06/25/1999	07/01/1999	Placer Creek
RA037WET	Robert Shober	06/22/1999	07/01/1999	Placer Creek
RA038WET	Larry Melvin	08/09/1999	08/21/1999	Placer Creek
RA039WET	Ed Shinpoch	03/20/2000	03/23/2000	Placer Creek
RA040WET	Timothy Haller	03/20/2000	03/23/2000	Placer Creek
RA041WET	Richard Freeze	05/03/2000	05/17/2000	Placer Creek
RA042WET	Mike Cogburn	05/11/2000	05/17/2000	Placer Creek
RA043WET	Jeff Shute	05/26/2000	05/26/2000	Placer Creek
RA044WET	Harold Conley	05/30/2000	05/30/2000	Placer Creek
RA045WET	Robert Shober	06/19/2000	07/01/2000	Placer Creek
RA046DRY	Richard Vondrak	06/20/2000	06/21/2000	Barela Canyon
RA047DRY	Robert Gibbens	07/02/2001	07/09/2001	Petaca Tantulium
RA047WET	John Fegel	06/30/2000	06/30/2000	North Placer Creek
RA048WET	Richard Bird	06/29/2000	07/06/2000	Placer Creek
RA049WET	Don Classen	07/20/2000	07/21/2000	Placer Creek
RA050WET	Steve Klahn	04/12/2001	04/16/2001	Placer Creek
RA051WET	Amos Black III	05/11/2001	05/14/2001	Placer Creek
RA052WET	David Krenek	05/15/2001	05/16/2001	Placer Creek
RA053WET	Richard Bird	05/21/2001	05/21/2001	Placer Creek
RA054WET	Richard Freeze	05/21/2001	05/21/2001	Placer Creek
RA055WET	Ed Shinpoch	05/25/2001	05/29/2001	Placer Creek
RA056WET	Ron Burnside	05/31/2001	05/31/2001	Placer Creek
RA057WET	Richard Torres	06/05/2001	06/05/2001	Placer Creek, Goose Creek & Pioneer Creeks
RA058WET	Harold Conley	06/15/2001	06/15/2001	Placer Creek
RA061WET	Robert Shober	07/19/2001	07/20/2001	Placer Creek
RA062WET	John Garcia	08/01/2001	08/01/2001	Placer Creek

<b>Permit No.</b>	<b>Name</b>	<b>Date Submitted</b>	<b>Date Issued</b>	<b>Location</b>
RA063WET	Norman Van Camp	02/27/2002	02/27/2002	Placer Creek
RA064WET	Amos Black III	04/12/2002	04/16/2002	Placer Creek
RA065WET	Ed Shinpoch	04/12/2002	04/16/2002	Placer Creek & Vallecitos Creek
RA066WET	Robert Shober	07/18/2002	07/18/2002	Placer Creek No. 1-3
RA067WET	Karl Murphy	04/25/2003	WITHDRAWN	Placer Creek No. 1-3
RA068WET	Cecil Morrow	05/12/2003	05/12/2003	Placer Creek No. 1-3
RA069WET	Jeff Jaramillo	05/28/2003	05/28/2004	Placer Creek No. 1-3
RA070WET	Ronald Stanley	06/01/2003	06/13/2003	Placer Creek No. 1-3
RA071WET	Gary Fannin	06/12/2003	06/13/2003	Placer Creek No. 1-3
RA072WET	Russel Palmer	06/06/2003	06/13/2003	Placer Creek No. 1-3
RA073WET	Joe Walker	07/30/2003	08/05/2003	Placer Creek & Apache Creek
RA074WET	Harold Phelps	08/12/2003	08/12/2003	Placer Creek
RA075WET	Matthew Hindi	08/14/2003	08/14/2003	Placer Creek
RA076WET	Jerry Emerson	11/07/2003	02/15/2003	Placer Creek Nos. 1-3
RA77WET	Eugene Leggett	01/08/2004	01/20/2004	Placer Creek & Apache Creek
RA078WET	Ronald Stanley	02/02/2004	02/25/2004	Placer Creek
RA079WET	Ed Shinpoch	04/02/2004	04/12/2004	Placer Creek
RA080WET	Joe Whitley	04/12/2004	04/20/2004	Placer Creek Nos. 1-3
RA081WET	Rex Anderson	04/21/2004	04/21/2004	Placer Creek Nos. 1-3
RA082WET	Robert Lipinski	05/18/2004	05/25/2004	Placer Creek
RA083WET	Richard Freeze	05/28/2004	06/03/2004	Placer Creek Nos. 1-3
RA084WET	David Alexander	05/28/2004	06/03/2004	Placer Creek Nos. 1-3
RA085WET	Alan Boissy	06/18/2004	06/21/2004	Placer Creek
RA086WET	Eugene Leggett	01/05/2005	01/07/2005	Sections 1 & 12, T28N, R6E
RA087WET	Ronald Stanley	02/23/2005	03/10/2005	Placer Creek Claims Nos. 1-3
RA088WET	Frank Mullally	04/11/2005	06/01/2005	Placer Creek Claims Nos. 1-3
RA089WET	Jeff Jaramillo	05/09/2005	05/25/2005	Placer Creek
RA090WET	Matthew Brandt	05/17/2005	06/08/2005	Placer Creek Claims Nos. 1-3
RA091WET	Robert Maras	05/18/2005	06/10/2005	Placer Creek Claims Nos. 1-3
RA092WET	Ed Shinpoch	05/20/2005	07/05/2005	Placer Creek Claims Nos. 1-2

<b>Permit No.</b>	<b>Name</b>	<b>Date Submitted</b>	<b>Date Issued</b>	<b>Location</b>
RA093WET	Richard Freeze	06/09/2005	06/29/2005	Placer Creek Claims Nos. 1-3
RA094WET	David Nielson	06/27/2005	06/29/2005	Placer Creek
RA095WET	Rex Anderson	08/18/2005	08/01/2005	Placer Creek Claims Nos. 1-3
RA096WET	Tijerina Luis	08/03/2005	08/09/2005	Placer Creek
RA097WET	Steven Wright	03/20/2006	05/03/2006	Placer Creek
RA098WET	Ed Shinpoch	04/10/2006	05/23/2006	Placer Creek
RA099WET	Carl Kirby	04/17/2006	05/03/2006	Placer Creek
RA100WET	Robert Hall	05/03/2006	05/24/2006	Placer Creek
RA101WET	David Nielson	05/24/2006	06/05/2006	Placer Creek
RA102WET	Frank Mullally	05/30/2006	06/08/2006	Placer Creek
RA103WET	Earnest Clark	06/06/2006	06/27/2006	Placer Creek
RA104WET	Patrick Smith	12/18/2006	03/13/2007	Placer Creek
RA105WET	Joe Whitley	02/08/2007	03/30/2007	Placer Creek
RA106WET	Joseph Grayson	03/01/2007	03/30/2007	Placer Creek
RA107WET	Frank Mullally	05/11/2007	06/11/2007	Hopewell Lake, Placer Creek; Sections 1 & 12, T28N, R6E
RA108WET	Bobby Morrow	04/30/2007	06/11/2007	Hopewell Lake, Placer Creek; Sections 1 & 12, T28 N, R6E
RA109WET	Ignacio Dennis Garcia	05/31/2007	06/11/2007	Hopewell Lake, Placer Creek, Carson National Forest; GPAA Claims Nos.1-3; Sections. 1 & 12, T28N, R6E
RA110WET	David Nielson	05/31/2007	07/06/2007	Hopewell Lake, Placer Creek; Sections 1 & 12, T28N, R6E
RA111WET	Daniel Curtis	06/27/2007	07/09/2007	Hopewell Lake, Placer Creek, Carson National Forest; GPAA Claims Nos. 1-3; Sections 1 & 12, T28N, R6E
RA112WET	Patrick Smith	12/17/2007	05/27/2008	Hopewell Lake, Placer Creek, Tres Piedras Ranger District, Carson National Forest; GPAA Claims 1-3; Sections 1 & 12, T28N, R6E
RA113WET	David Maxwell	02/20/2008	05/30/2008	Hopewell Lake, Placer Creek, Tres Piedras Ranger District, Carson National Forest; GPAA Claims 1-3; Sections 1 & 12, T28N, R6E
RA114WET	Joseph Hoffman	05/15/2008	05/29/2008	Placer Creek, Carson National Forest ; E2 & SW/4 Section 1 & NE/4 Section 12, T28N, R6E
RA115WET	Frank Mullally	05/28/2008	07/08/2008	Hopewell Lake, Placer Creek, Tres Piedras Ranger District, Carson National Forest; GPAA Claims 1-3; Sections 1 & 12, T28N, R6E
RA116WET	David Nielson	06/23/2008	07/08/2008	Hopewell Lake, Placer Creek, Tres Piedras Ranger District, Carson National Forest; GPAA Claims 1-3; Sections 1 & 12, T28N, R6E

<b>Permit No.</b>	<b>Name</b>	<b>Date Submitted</b>	<b>Date Issued</b>	<b>Location</b>
RA117WET	Mark Barber	07/21/2008	07/23/2008	Hopewell Lake, Placer Creek, Tres Piedras Ranger District, Carson National Forest, GPAA Claims 1-3; Sections 1 & 12, T28N, R6E
RA118WET	Parham Turner	07/24/2008	08/05/2008	Hopewell Lake, Placer Creek, Tres Piedras Ranger District, Carson National Forest, GPAA Claims 1-3; Sections 1 & 12, T28N, R6E
RA119WET	Jimmy Newlon	02/24/2009	05/21/2009	Placer Creek Tres Piedras Ranger District, Carson National Forest, GPAA Claims 1-3; Sections 1 & 2, T28N, R6E; vicinity Hopewell Lake
RA120WET	Michael Brandenberger	04/09/2009	05/29/2009	Placer Creek
RA121WET	Frank Mullally	04/17/2009	05/28/2009	Placer Creek
RA122WET	Stephens Storey	04/24/2009	06/01/2009	Placer Creek Tres Piedras Ranger District, Carson National Forest, GPAA Claims 1-3; Sections 1 & 2, T28N, R6E; vicinity Hopewell Lake
RA123WET	Bernardo Archuleta	04/29/2009	06/01/2009	Placer Creek Tres Piedras Ranger District, Carson National Forest, GPAA Claims 1-3; Sections 1 & 2, T28N, R6E; vicinity Hopewell Lake
RA124WET	Kari Staggs	04/29/2009	06/01/2009	Placer Creek Tres Piedras Ranger District, Carson National Forest, GPAA Claims 1-3; Sections 1 & 2, T28N, R6E; vicinity Hopewell Lake
RA125WET	Patrick Smith	05/14/2009	05/28/2009	Placer Creek
RA126WET	Chris Romero	06/29/2009	07/2/2009	Placer Creek Tres Piedras Ranger District, Carson National Forest, GPAA Claims 1-3; Sections 1 & 2, T28N, R6E; vicinity Hopewell Lake
RA127WET	James Phelps	07/14/2009	07/23/2009	Placer Creek
RA128WET	Albert Lopez	07/15/2009	07/22/2009	Placer Creek Tres Piedras Ranger District, Carson National Forest, GPAA Claims 1-3; Sections 1 & 2, T28N, R6E; vicinity Hopewell Lake
RA129WET	David Nielson	07/23/2009	07/31/2009	Placer Creek Tres Piedras Ranger District, Carson National Forest, GPAA Claims 1-3; Sections 1 & 2, T28N, R6E; vicinity Hopewell Lake
RA130DRY	Marvin Lord	02/08/2010	03/01/2010	SE/4 Section 9 & SW/4 Section 36, T23N, R5E; Canones quadrangle
RA130WET	David Randleman	05/11/2010	06/01/2010	Placer Creek Tres Piedras Ranger District, Carson National Forest, GPAA Claims 1-3; Sections 1 & 2, T28N, R6E; vicinity Hopewell Lake
RA131WET	Kari Staggs	06/07/2010	06/24/2010	Placer Creek Tres Piedras Ranger District, Carson National Forest, GPAA Claims 1-3; Sections 1 & 2, T28N, R6E; vicinity Hopewell Lake
RA132WET	Frank Mullally	06/14/2010	07/13/2010	Placer Creek Tres Piedras Ranger District, Carson National Forest, GPAA Claims 1-3; Sections 1 & 2, T28N, R6E; vicinity Hopewell Lake
RA133WET	Donnie Bell	06/14/2010	07/07/2010	
RA134WET	Blane Foutz	06/28/2010	07/27/2010	Placer Creek Tres Piedras Ranger District, Carson National Forest, GPAA Claims 1-3; Sections 1 & 2, T28N, R6E; vicinity Hopewell Lake
RA135WET	Cliff Carl	06/29/2010	07/16/2010	

Permit No.	Name	Date Submitted	Date Issued	Location
RA136WET	Margaret Walker	07/12/2010	07/16/2010	Placer Creek Tres Piedras Ranger District, Carson National Forest, GPAA Claims 1-3; Sections 1 & 2, T28N, R6E; vicinity Hopewell Lake
RA137WET	James Phelps	07/13/2010	08/04/2010	Placer Creek Tres Piedras Ranger District, Carson National Forest, GPAA Claims 1-3; Sections 1 & 2, T28N, R6E; vicinity Hopewell Lake
RA138WET	John Cross	07/13/2010	08/04/2010	Placer Creek Tres Piedras Ranger District, Carson National Forest, GPAA Claims 1-3; Sections 1 & 2, T28N, R6E; vicinity Hopewell Lake
SA021DRY	David Barnhill	03/13/1998	03/30/1998	Insanity No. 1 Claim
SA022DRY	Craig Muma	11/23/2004	12/02/2004	Section 19, T17N, R2W
SF001DRY	Michael Bailey	01/24/2003	02/17/2003	Cerrillos Area
SF002DRY	Tim Haller	02/10/2004	02/11/2004	Golden
SF003DRY	Paul Plunkett	06/12/2004	06/16/2004	San Pedro
SF004DRY	Philip Chambless	06/17/2005	06/27/2005	Turquoise
SF005DRY	Paul Plunkett	07/12/2005	08/01/2005	
SF009DRY	Paul Plunkett	06/28/2006	07/19/2006	Section 28, T12N, R7E
SF010DRY	Paul Plunkett	07/09/2007	07/17/2007	East of Golden; NW/4 Section 28, T12N, R7E
SF011DRY	Philip Chambless	08/08/2007	10/11/2007	Cerrillos Hills; Verde Claim - NMMC 170406; NW/4 Section 5, T14N, R8E
SF012DRY	Paul Plunkett	06/23/2008	07/31/2008	East of Golden; NW/4 Section 28, T12N; R7E
SF013DRY	Philip Chambless	09/19/2008	12/22/2008	Verde Claim NMMC 170406, Cerrillos Hills Mining District; NW/4 Section 5, T14N, R8E
SF014DRY	Philip Chambless	04/12/2010	04/20/2010	Verde Claim NMMC 170406, Cerrillos Hills Mining District; NW/4 Section 5, T14N, R8E
SF015DRY	Tim Haller	06/30/2010	11/30/2010	NW4 NW4 Section 22, T12N, R7E
SI028DRY	Paul Plunkett	04/21/1998	04/28/1998	Animas Gulch; Section 25, T15S, R7W
SI029DRY	Amos Black III	06/07/1999	07/07/1998	Kingston; Sunrise Claim Nos. 1-4
SI029WET	John Williams, Jr.	03/03/2003	05/12/2003	Elephant Butte
SI030DRY	Wayne Rutland	11/19/2007	01/08/2008	Pittsburg Mining District; NE/4 Section 4, T16S, R4W
SI031DRY	Sonny Riggs	10/14/2009	03/11/2010 ENFORCEMENT	Granite Canyon #1 Placer Claim, SW/4 Section 4, T16S, R4W
SI032DRY	Wayne Rutland	04/26/2010	05/14/2010	NE/4 Section 4, T16S, R4W; Caballo & Apache Gap; Located within the Pittsburg Mining District
SM050WET	Robert Staffel	07/02/2001	07/02/2001	Willow Creek
SO001DRY	Paul Plunkett	01/26/1999	03/01/1999	Crestone Lode Mine, Magdalena

Permit No.	Name	Date Submitted	Date Issued	Location
SO002DRY	Ramon De Mark	01/24/2000	02/09/2000	South of Bingham
SO003DRY	Michael Sanders	02/07/2000	02/09/2000	South of Bingham
SO004DRY	Tom Nelson	03/09/2000	03/10/2000	South of Bingham
SO005DRY	Thomas Massis	05/15/2000	05/18/2000	South of Bingham
SO006DRY	John Scully	12/03/2003	12/17/2003	
SO007DRY	Jo Drake	02/27/2004	03/05/2004	
SO008DRY	Jo Drake	02/17/2005	03/10/2005	Section 29, T6S, R8E
SO009DRY	Michael Tune	04/08/2005	04/21/2005	South of Magdalena, Cibola National Forest
SO011DRY	Jo Drake	01/25/2006	02/01/2006	Sections 20 & 29, T6S, R8E
SO012WET	Dean Brubaker	02/26/2007	04/11/2007	
SO013DRY	Marvin Lord	12/15/2010	PENDING	NE/4 Section 9, T5S, R1W
TA010DRY	Vaughn Sowards	05/20/1997	5/22/1997	Cerrito Dormilon, Petaca Peak
TA013DRY	S. Glassmire	02/25/1999	3/1/1999	Latir Peak
TA014WET	Robert Lipinski	06/29/2004	7/6/2004	
TA015WET	Jeff Jaramillo	08/16/2004	8/18/2004	Rio Hondo
TA016WET	Patrick Smith	04/29/2009	5/28/09	

**Total Number of General Permits Submitted 204**

Number of General Permits Approved 197  
Number of General Permits Pending 5  
Number of General Permits Withdrawn 1  
Number of General Permits Enforcement 1

**\*\*\*\*\* This page intentionally left blank. \*\*\*\*\***



## **Appendix 2. New Mexico Financial Assurance as of December 2010**

**Table 17. Financial Assurance as of December 2010**

Permit Number	Permit Name	Operator	Commodity	Permit Type	Instrument	Amount	Joint Agency	Disturbed Acreage
BE001RE	Tijeras Mine and Mill	GCC Rio Grande, Inc., Tijeras, NM	Limestone	Regular Mine	3 <sup>rd</sup> Party Guarantee	\$2,812,500	USFS	504
					Letter of Credit	\$867,500		
					Surety Bond	\$70,000		
					<b>Subtotal:</b>	<b>\$3,750,000</b>		
CA003ME	Hiawatha And Little Jim Mine	Volcanic Stone Company, Albuquerque, NM	Tin	Minimal Impact Mine	Certificate of Deposit	\$736	USFS	7.5
					<b>Subtotal:</b>	<b>\$736</b>		
CI002RE	Mt. Taylor Mine	Rio Grande Resources Corporation, Grants, NM	Uranium	Regular Mine	Surety Bond	\$725,056		66
					<b>Subtotal:</b>	<b>\$725,056</b>		
CI004MN	Haskani Mine	Denali Enterprises, Laguna, NM	Travertine	Minimal Impact Mine	Certificate of Deposit	\$32,743		10
					<b>Subtotal:</b>	<b>\$32,743</b>		
CI005RE	Tinaja Pit Mine	C & E Concrete, Inc., Milan, NM	Limestone	Regular Mine	Letter of Credit	\$161,514		40
					<b>Subtotal:</b>	<b>\$161,514</b>		
CI006MN	Ray Claims No. 4 and No. 6 Mine	International Stone Company, Scottsdale, AZ	Travertine	Minimal Impact Mine	Certificate of Deposit	\$20,405	BLM	10
					<b>Subtotal:</b>	<b>\$20,405</b>		
CI007RE	J.J. No.1 Mine	Rio Tinto AuM Company South Jordan, UT	Uranium	Regular Mine	Surety Bond	\$642,299		11.8
					<b>Subtotal:</b>	<b>\$642,299</b>		
DA003MN	Alley Gypsum Mine	Alley Gypsum Mining, Las Cruces, NM	Gypsum	Minimal Impact Mine	Letter of Credit	\$5,000	BLM	1.9
					<b>Subtotal:</b>	<b>\$5,000</b>		
GR001RE	Pinos Altos Mine	Freeport-McMoRan Cobre, Hanover, NM	Copper, Gold, Silver, Zinc	Regular Mine	Letter of Credit	\$343,600		12
GR002RE	Continental Mine and Mill	Freeport-McMoRan Cobre, Hanover, NM	Copper, Gold, Molybdenum, Silver	Regular Mine	3 <sup>rd</sup> Party Guarantee	\$18,398,673	NMED	928
					Collateral Bond	\$6,173,600	NMED	
					Trust	\$3,000,000	NMED	
					<b>Subtotal:</b>	<b>\$27,572,273</b>		
GR006RE	Chino Limestone Mine	Freeport-McMoRan Chino, Hurley, NM	Limestone	Regular Mine	Letter of Credit	\$87,900		50
					<b>Subtotal:</b>	<b>\$87,900</b>		
GR007RE	Little Rock Mine	Freeport-McMoRan Tyrone, Tyrone, NM	Copper	Regular Mine	Letter of Credit	\$1,355,400	NMED	85
					<b>Subtotal:</b>	<b>\$1,355,400</b>		

Permit Number	Permit Name	Operator	Commodity	Permit Type	Instrument	Amount	Joint Agency	Disturbed Acreage
GR008RE	<b>Jersey Lily, Snowflake and Virtue Mines</b>	Freeport-McMoRan Tyrone, Tyrone, NM	Silica flux	Regular Mine	Letter of Credit	\$46,600		22
					<b>Subtotal:</b>	<b>\$46,600</b>		
GR009RE	<b>Chino Mine and Mill</b>	Freeport-McMoRan Chino, Hurley, NM	Copper	Regular Mine	3 <sup>rd</sup> Party Guarantee	\$121,136,201	NMED	9,416
					Trust	\$64,042,304	NMED	
					<b>Subtotal:</b>	<b>\$185,178,505</b>		
GR010RE	<b>Tyrone Mine and Mill</b>	Freeport-McMoRan Tyrone, Tyrone, NM	Copper	Regular Mine	Collateral Bond	\$27,951,986	NMED	7,440
					Surety Bond	\$25,000,000	NMED	
					Surety Bond	\$6,780,518	NMED	
					Letter of Credit	\$170,874	BLM	
					3 <sup>rd</sup> Party Guarantee	\$98,827,127	NMED	
					Trust	\$27,000,000	NMED	
<b>Subtotal:</b>	<b>\$185,730,505</b>							
GR012MN	<b>KB Mine</b>	Southwest Silica Flux Company, Hanover, NM	Silica flux	Minimal Impact Mine	Certificate of Deposit	\$24,182	USFS	15
					<b>Subtotal:</b>	<b>\$24,182</b>		
GR020RE	<b>Georgetown Mine</b>	Sierra Corporation, Fort Worth, TX	Silver	Regular Mine	Certificate of Deposit	\$21,500	NMED	3
					<b>Subtotal:</b>	<b>\$21,500</b>		
GR022MN	<b>Farmers Backbreaker Mine</b>	Jack Sills, Glenwood Spring, CO	Gold	Minimal Impact Mine	Certificate of Deposit	\$15,000	USFS	10
					<b>Subtotal:</b>	<b>\$15,000</b>		
GR025ME	<b>Mathis Limestone Quarry Mine</b>	Mathis and Mathis Mining, Idyllwild, CA	Limestone	Minimal Impact Mine	Certificate of Deposit	\$3,000	USFS	16.6
					<b>Subtotal:</b>	<b>\$3,000</b>		
GR028RE	<b>Center Mine</b>	Royal Minerals, Inc., Duncan, AZ	Silica flux, Gold, Silver	Regular Mine	Certificate of Deposit	\$12,000		6
					<b>Subtotal:</b>	<b>\$12,000</b>		
GR030ME	<b>Chemical Lime Mine &amp; Mill</b>	Chemical Lime Company, Fort Worth, TX	Silica flux	Minimal Impact Mine	Surety Bond	\$40,243	USFS	19
					<b>Subtotal:</b>	<b>\$40,243</b>		
GR038EM	<b>LT Ranch Project</b>	Copper One (USA), Inc. Apache Junction, Arizona	Copper	Minimal Impact Exploration		\$66,368		
					<b>Subtotal:</b>	<b>\$66,368</b>		
HI001RE	<b>Lordsburg Mine and Mill</b>	Lordsburg Mining Company, Albuquerque, NM	Gold	Regular Mine	Certificate of Deposit	\$3,830		15
					<b>Subtotal:</b>	<b>\$3,830</b>		
HI002RE	<b>Brockman Mine</b>	Freeport-McMoRan Chino, Hurley, NM	Silica flux	Regular Mine	Letter of Credit	\$276,900		40
					<b>Subtotal:</b>	<b>\$276,900</b>		

Permit Number	Permit Name	Operator	Commodity	Permit Type	Instrument	Amount	Joint Agency	Disturbed Acreage
HI004MN	<b>KM Mine</b>	Southwest Silica Flux Company, Hanover, NM	Silica flux	Minimal Impact Mine	Certificate of Deposit	\$8,124		4
					<b>Subtotal:</b>	<b>\$8,124</b>		
HI008ME	<b>Volcano Mine</b>	Dane Mining & Exploration, Ltd., Tucson, AZ	Other	Minimal Impact Mine	Collateral Bond	\$28,652		9
					<b>Subtotal:</b>	<b>\$28,652</b>		
LI001ME	<b>Warner Gulch Placer Mine</b>	American Eagle Mining Company, McIntosh, NM	Gold	Minimal Impact Mine	Letter of Credit	\$10,000	USFS	10
					<b>Subtotal:</b>	<b>\$10,000</b>		
LI003ER	<b>Bonito Gold Silver Project</b>	David Dunn, Vancouver, BC, Canada	Gold	Regular Exploration	Cash	\$200		0.2
					<b>Subtotal:</b>	<b>\$200</b>		
LI005ME	<b>Capitan Iron Mine</b>	El Capitan Ltd., Scottsdale, AZ	Iron	Minimal Impact Mine	Certificate of Deposit	\$15,000	USFS	6
					<b>Subtotal:</b>	<b>\$15,000</b>		
LU001RE	<b>Deming Jigging Mill</b>	C.E. Minerals/Mulcoa, Andersonville, GA	Manganese	Regular Mine	Surety Bond	\$100,000	NMED	13
					<b>Subtotal:</b>	<b>\$100,000</b>		
LU008RE	<b>Cyprus Deming Tailings Impoundment</b>	Freeport-McMoRan Chino, Hurley, NM	Copper, Zinc, Lead	Regular Mine	Letter of Credit	\$132,588	NMED	13
					<b>Subtotal:</b>	<b>\$132,588</b>		
LU009RE	<b>ASARCO Deming Mill</b>	ASARCO Multi-State Custodial Trust (Le Petomane XXV, Inc.) Chicago, IL	Copper, Zinc, Lead	Regular Mine	Surety Bond	\$850,000		56
					Letter of Credit	\$120,000		
					<b>Subtotal:</b>	<b>\$970,000</b>		
MK003ME	<b>Star Lake Menefee Mine</b>	Menefee Mining Corporation, Dallas, TX	Humate	Minimal Impact Mine	Surety Bond	\$21,193		9.4
					<b>Subtotal:</b>	<b>\$21,193</b>		
MK005RE	<b>Section 27 Mine</b>	United Nuclear Corporation, Gallup, NM	Uranium	Regular Mine	Surety Bond	\$377,000		
					<b>Subtotal:</b>	<b>\$377,000</b>		
MK007ME	<b>Star Lake Mesa Verde Mine</b>	Mesa Verde Resources, Placitas, NM	Humate	Minimal Impact Mine	Letter of Credit	\$24,794		9.9
					Letter of Credit	\$21,193		
					Certificate of Deposit	\$1,577		
					Certificate of Deposit	\$4,408		
					<b>Subtotal:</b>	<b>\$51,972</b>		
MK008ME	<b>Pueblo Alto Mine</b>	Mesa Verde Resources, Placitas, NM	Humate	Minimal Impact Mine	Surety Bond	\$21,051		9.9
					Certificate of Deposit	\$22,000		
					<b>Subtotal:</b>	<b>\$43,051</b>		

Permit Number	Permit Name	Operator	Commodity	Permit Type	Instrument	Amount	Joint Agency	Disturbed Acreage
MK009RE	Old Stope Leach Mine	Rio Algom Mining LLC, Grants, NM	Uranium	Regular Mine	Letter of Credit	\$577,616		230
					<b>Subtotal:</b>	<b>\$577,616</b>		
MK010MN	U-Mate Mine	U-Mate International, Inc., Scottsdale, AZ	Humate	Minimal Impact Mine	Certificate of Deposit	\$8,844		5.5
					<b>Subtotal:</b>	<b>\$8,844</b>		
MK023ER	Marquez Canyon Confirmation Drill Project	Neutron Energy Phoenix, AZ	Uranium	Regular Exploration	Letter of Credit	\$81,250		9.8
					Letter of Credit	\$33,780		
					<b>Subtotal:</b>	<b>\$115,030</b>		
MK028EM	Elizabeth Claims Project	Neutron Energy Phoenix, AZ	Uranium	Minimal Impact Exploration	Certificate of Deposit	\$52,000		4.9
					Certificate of Deposit	\$18,270		
					<b>Subtotal:</b>	<b>\$70,270</b>		
OT002MN	B.O.W. Mine	B.O.W. Corporation, El Paso, TX	Garnet	Minimal Impact Mine	Letter of Credit	\$15,932		10
					<b>Subtotal:</b>	<b>\$15,932</b>		
RA001ME	Northstar Mine	Northstar Living Trust, Santa Fe, NM	Gold	Minimal Impact Mine	Letter of Credit	\$10,000		2
					<b>Subtotal:</b>	<b>\$10,000</b>		
RA003ME	Cullum Claims Mine	Pueblo of Santa Clara, Española, NM	Pumice	Minimal Impact Mine	Letter of Credit	\$161,500		20
					<b>Subtotal:</b>	<b>\$161,500</b>		
RA004RE	Rocky Mountain Mine	CR Minerals Company, LLC, San Juan Pueblo, NM	Pumice	Regular Mine	Letter of Credit	\$355,342		60
					<b>Subtotal:</b>	<b>\$355,342</b>		
RA005RE	Velarde Mill	Ogelbay Norton Specialty Minerals, Pittsburgh, PA	Mica	Regular Mine	Surety Bond	\$287,821	NMED	35
					<b>Subtotal:</b>	<b>\$287,821</b>		
SA001RE	El Cajete Mine	Copar Pumice Company, Española, NM	Pumice	Regular Mine	Letter of Credit	\$78,747	USFS	70
					Letter of Credit	\$12,103		
					<b>Subtotal:</b>	<b>\$90,850</b>		
SA003ER	Georgia Claims Project	Centex American Gypsum, Albuquerque, NM	Gypsum	Regular Exploration	Surety Bond	\$5,000	BLM	0.2
					<b>Subtotal:</b>	<b>\$5,000</b>		
SA004MN	Copar South Pit Mine	Copar Pumice Company, Española, NM	Pumice	Minimal Impact Mine	Letter of Credit	\$33,516	USFS	6
					<b>Subtotal:</b>	<b>\$33,516</b>		
SA005ME	Menefee Mill	Menefee Mining Corporation, Dallas, TX	Humate	Minimal Impact Mine	Certificate of Deposit	\$16,000		9.6
					<b>Subtotal:</b>	<b>\$16,000</b>		

Permit Number	Permit Name	Operator	Commodity	Permit Type	Instrument	Amount	Joint Agency	Disturbed Acreage
SA006MN	<b>Copper City Mine</b>	Crystal Mining Corporation, Albuquerque, NM	Humate	Minimal Impact Mine	Cash	\$800		3.4
					<b>Subtotal:</b>	<b>\$800</b>		
SA009MN	<b>Eagle Mesa Mine</b>	Rammsco Operations, Inc., Katy, TX	Humate	Minimal Impact Mine	Letter of Credit	\$7,270		3.5
					<b>Subtotal:</b>	<b>\$7,270</b>		
SA010ME	<b>Mesa Verde Resources Mill</b>	Mesa Verde Resources, Placitas, NM	Humate	Minimal Impact Mine	Surety Bond	\$18,856		5.3
					<b>Subtotal:</b>	<b>\$18,856</b>		
SA011MN	<b>San Luis Mine</b>	Horizon Ag-Products, Modesto, CA	Humate	Minimal Impact Mine	Letter of Credit	\$35,100		10
					<b>Subtotal:</b>	<b>\$35,100</b>		
SF001ME	<b>San Pedro Mine and Mill</b>	St. Cloud Mining Company, Winston, NM	Copper, Gold, Silver, Carnot	Minimal Impact Mine	Certificate of Deposit	\$8,288		9
					<b>Subtotal:</b>	<b>\$8,288</b>		
SF002RE	<b>Cunningham Hill Mine</b>	LAC Minerals (USA) LLC, Cerrillos, NM	Gold	Regular Mine	Trust	\$378,766		307
					<b>Subtotal:</b>	<b>\$378,766</b>		
SI001ME	<b>St. Cloud U.S. Treasury Mine</b>	St. Cloud Mining Co., Truth or Consequences, NM	Silica flux, Gold, Silver	Minimal Impact Mine	Certificate of Deposit	\$1,857	NMED	6
					<b>Subtotal:</b>	<b>\$1,857</b>		
SI005MN	<b>Burbank Canyon Mine</b>	Cornerstone Investment Circle, LLC, Woodside, CA	Precious metals	Minimal Impact Mine	Certificate of Deposit	\$30,000		9.9
					<b>Subtotal:</b>	<b>\$30,000</b>		
SI006RE	<b>Zeolite Mine and Mill</b>	St. Cloud Mining Company, Truth or Consequences, NM	Zeolite	Regular Mine	Collateral Bond	\$157,719	NMED	51
					<b>Subtotal:</b>	<b>\$157,719</b>		
SI022EM	<b>Copper Flat Project</b>	New Mexico Copper Corporation, Santa Fe, NM	Copper	Minimal Impact Exploration	Certificate of Deposit	\$39,540		0.1
					<b>Subtotal:</b>	<b>\$39,540</b>		
SO001RE	<b>Socorro Mine and Mill</b>	Dicaperl Minerals Corporation, Socorro, NM	Perlite	Regular Mine	Letter of Credit	\$688,166		162
					Letter of Credit	\$106,237		
					<b>Subtotal:</b>	<b>\$794,403</b>		
SO002MN	<b>Sais Quarry</b>	New Mexico Travertine. Belen, NM	Schist	Minimal Impact Mine	Certificate of Deposit	\$2,661		3.7
					<b>Subtotal:</b>	<b>\$2,661</b>		
SO014ER	<b>Sullivan Ranch</b>	BE Resources, Inc.	Beryllium	Regular Exploration	Certificate of Deposit	\$66,104		
					<b>Subtotal:</b>	<b>\$66,104</b>		

Permit Number	Permit Name	Operator	Commodity	Permit Type	Instrument	Amount	Joint Agency	Disturbed Acreage
TA001RE	<b>Questa Mine and Mill</b>	Chevron Mining Inc., Questa, NM	Molybdenum	Regular Mine	Letter of Credit	\$1,355,634	NMED	
					Letter of Credit	\$23,027,393	NMED	1,200
					3 <sup>rd</sup> Party Guarantee	\$117,752,599	NMED	800
					Letter of Credit	\$16,223,474	NMED	
					<b>Subtotal:</b>	<b>\$158,359,100</b>		
TA002RE	<b>El Grande Mine and Mill</b>	Dicaperl Minerals Corporation Taos, NM and Antonito, CO	Perlite	Regular Mine	Letter of Credit	\$711,497		
					<b>Subtotal:</b>	<b>\$711,497</b>		204
TA003RE	<b>U. S. Hill Mine</b>	Pueblo of Picuris, Peñasco, NM	Mica	Regular Mine	Letter of Credit	\$201,354	USFS	
					<b>Subtotal:</b>	<b>\$201,354</b>		65
TA005RE	<b>No Agua Mine and Mill</b>	Harborlite Corporation, Antonito, CO	Perlite	Regular Mine	Surety Bond	\$1,029,790		
					<b>Subtotal:</b>	<b>\$1,029,790</b>		275
VA001ME	<b>Lucero Quarry Mine</b>	New Mexico Travertine, Belen, NM	Travertine	Minimal Impact	Certificate of Deposit	\$24,515		
					<b>Subtotal:</b>	<b>\$24,515</b>		9.9

**Total Financial Assurance**

**\$571,488,680**

**\*\*\*\*\* This page intentionally left blank. \*\*\*\*\***



**Appendix 3. Maps of Mines and Exploration Projects Regulated by  
MARP in 2010**

**Figure 3. Approved Regular and Minimal Impact Mines as of December 2010**

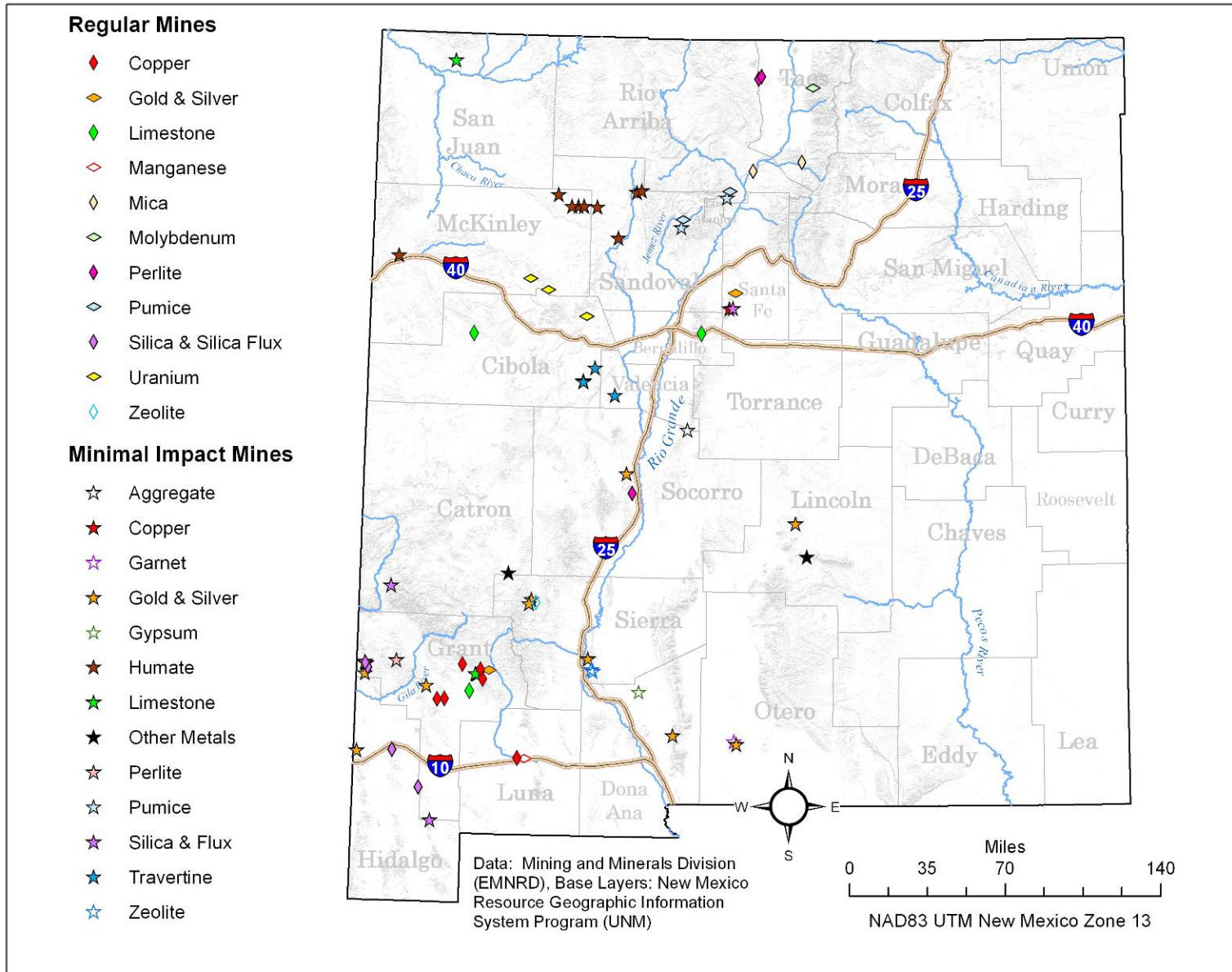
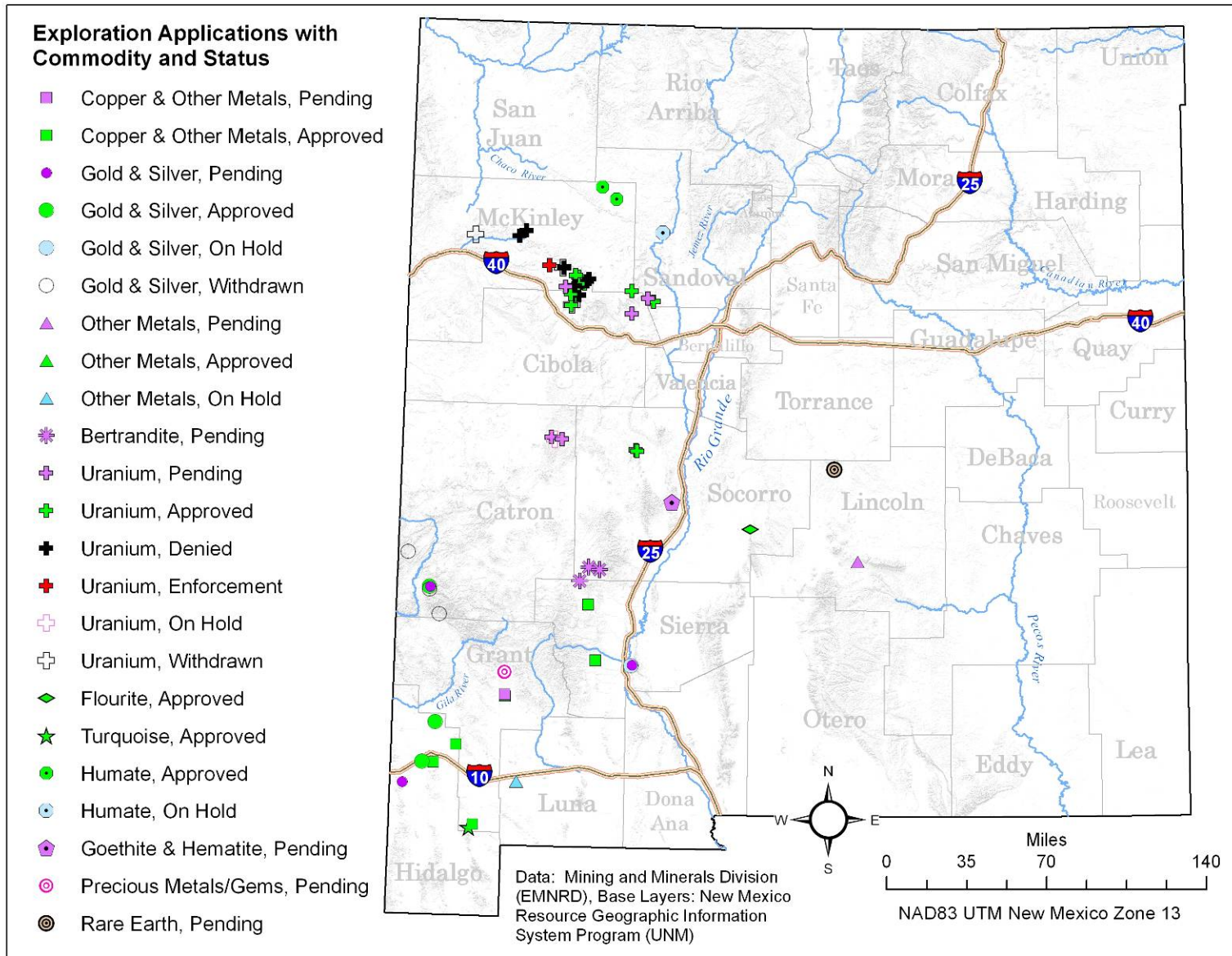


Figure 4. Exploration Permits Active in Calendar Year 2010



**\*\*\*\*\* This page intentionally left blank. \*\*\*\*\***