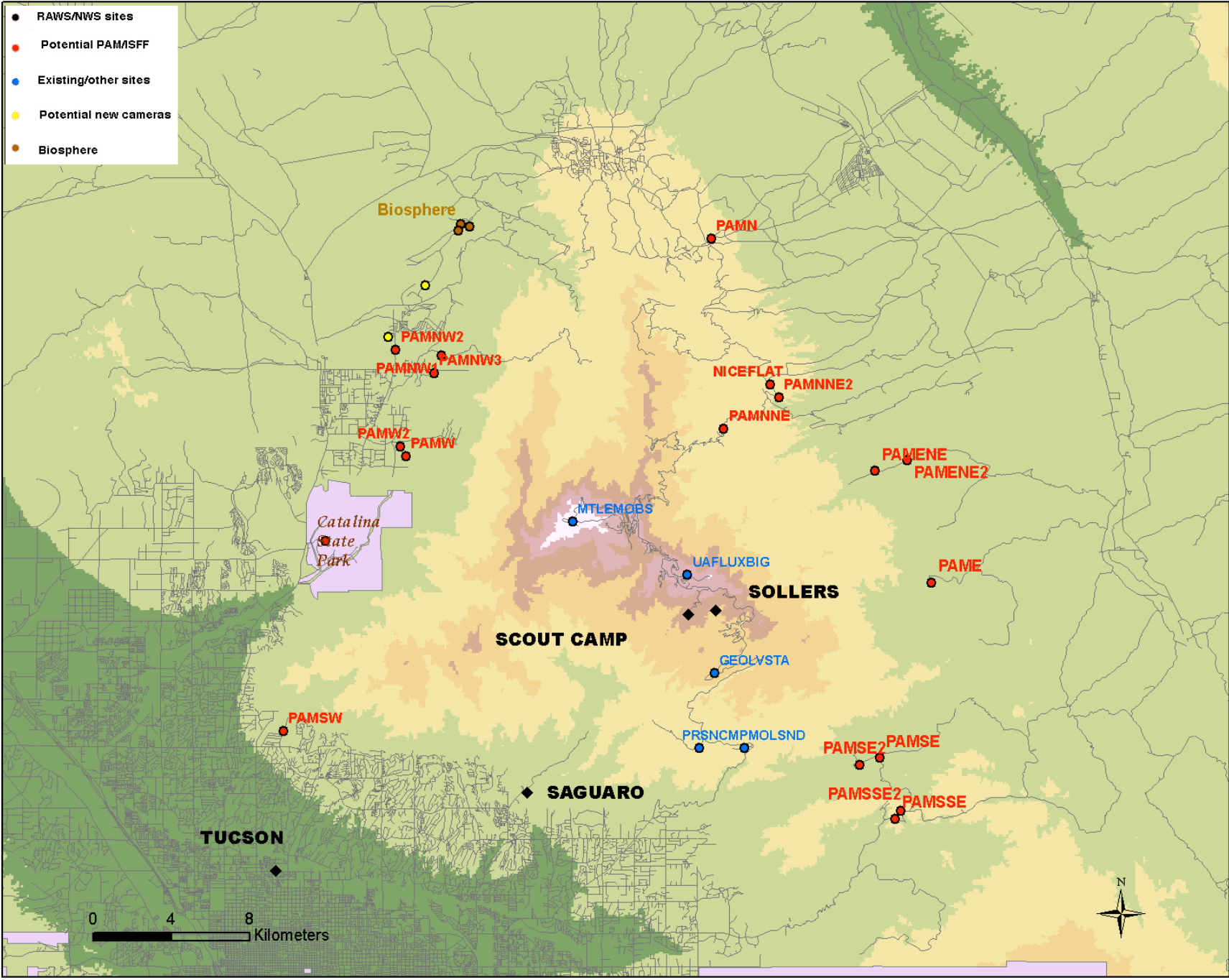


PAM/ISFF Site Survey CuPIDO 2006

May-June 2005

Note year on time stamp on pictures is incorrect

- RAWs/NWS sites
- Potential PAM/SFF
- Existing/other sites
- Potential new cameras
- Biosphere





PAMSW
Sunrise Road Site
Private Land w/possible county land between
Lat = 32.34445, Long = -110.94589, elev = 2884

Line of Site
Mt Lemmon = NO, Mt Bigelow = NO



PAMW
Private land at end of 4WD road
Lat = 32.47108, Long = -110.87898, elev = 3076 ft

Line of Site
Mt Lemmon = YES, Mt Bigelow = NO



PAMNW2

Charouleau Gap Trailhead

Coronado National Forest Forest Service Road

Lat = 32.52034, Long = -110.8846, elev = 3277 ft

Line of Site

Mt Lemmon = YES, Mt Bigelow = NO



PAMNW3
Edwin Road

Private land Near Charouleau Gap Trail
Lat = 32.50952, Long = -110.86359, elev = 3310 ft

Line of Site
Mt Lemmon = YES, Mt Bigelow = NO



CATPRKWTR
Catalina State Park Water Tank

Lat = 32.43223, Long = -110.92287, elev = 2859 ft

Line of Site
Mt Lemmon = YES, Mt Bigelow = NO



MOLSOUND
Molino Basin
Coronado National Forest

Lat = 32.33609, Long = -110.69509, elev = 4305 ft

Line of Site
Mt Lemmon = NO, Mt Bigelow = NO

Likely site for GAOS



PRISONCMP
Prison Cam Road Corral
Coronado National Forest

Lat = 32.33623, Long = -110.71957, elev = 4788 ft

Line of Site
Mt Lemmon = NO, Mt Bigelow = NO

Possible site for GAOS

Not suitable for PAMISFF since the site is in a bowl



MTLEMOBS
Stewart Observatory

Lat = 32.44097, Long = -110.78838, elev = 9075 ft

Line of Site
Mt Lemmon = YES, Mt Bigelow = YES

Possible location of MIPS



PAMNNE
Oracle-Mt. Lemmon Hwy
Coronado National Forest

Lat = 32.48373, Long = -110.70572, elev = 4910 ft

Line of Site
Mt Lemmon = NO, Mt Bigelow = YES



PAMNNE2

Oracle-Mt Lemmon Hwy
Coronado National Forest

Lat = 32.49806, Long = -110.67567, elev = 4530 ft

Line of Site
Mt Lemmon = NO, Mt Bigelow = YES



NICEFLAT

Oracle-Mt Lemmon Hwy
Coronado National Forest

Lat = 32.50412 , Long = -110.68042, elev = 4645 ft

Line of Site

Mt Lemmon = NO, Mt Bigelow = YES



PAMN

Campo Bonito
Coronado National Forest

Lat = 32.57154, Long = -110.71213, elev = 4466 ft

Line of Site
Mt Lemmon = NO, Mt Bigelow = YES



PAMSSE

Gated field E side Reddington Rd
Coronado National Forest

Lat = 32.30318, Long = -110.61292, elev = 4215 ft

Line of Site

Mt Lemmon = NO, Mt Bigelow = YES



PAMSSE2

Staging area W side Reddington Road
Coronado National Forest

Lat = 32.30698, Long = -110.60981, elev = 4257 ft

Line of Site

Mt Lemmon = NO, Mt Bigelow = YES



PAMSE

Bellota Ranch HQ Rd N of Reddington Rd
Private Land within Coronado National Forest

Lat = 32.33137, Long = -110.62126, elev = 3993 ft

Line of Site

Mt Lemmon = NO, Mt Bigelow = YES



PAMSE2

Bellota Ranch HQ Rd, near ranch
Private land within Coronado National Forest

Lat = 32.32828, Long = -110.63227, elev = 3932 ft

Line of Site

Mt Lemmon = NO, Mt Bigelow = YES



PAME

Forest Rd. 32 E of Reddington Rd.

Private land adjacent to Coronado National Forest

Lat = 32.41229, Long = -110.59283, elev = 3797 ft

Line of Site

Mt Lemmon = YES (end of road), Mt Bigelow = YES



PAMENE

Forest Road 802 Davis Mesa W end
Private land adjacent to Coronado National Forest

Lat = 32.46387, Long = -110.62321, elev = 4103 ft

Line of Site

Mt Lemmon = YES, Mt Bigelow = YES



PAMENE2

Forest Road 802 Davis Mesa E end
Private land adjacent to Coronado National Forest

Lat = 32.4688, Long = -110.60583, elev = 4000 ft

Line of Site

Mt Lemmon = YES, Mt Bigelow = YES