



**NOAA
FISHERIES**

National Marine Fisheries Service ESA/FIFRA Update

March 5, 2024

Nikki Wildart
Office of Protected Resources



Sunflower sea star

Proposed ESA-listing April 2023



Queen conch

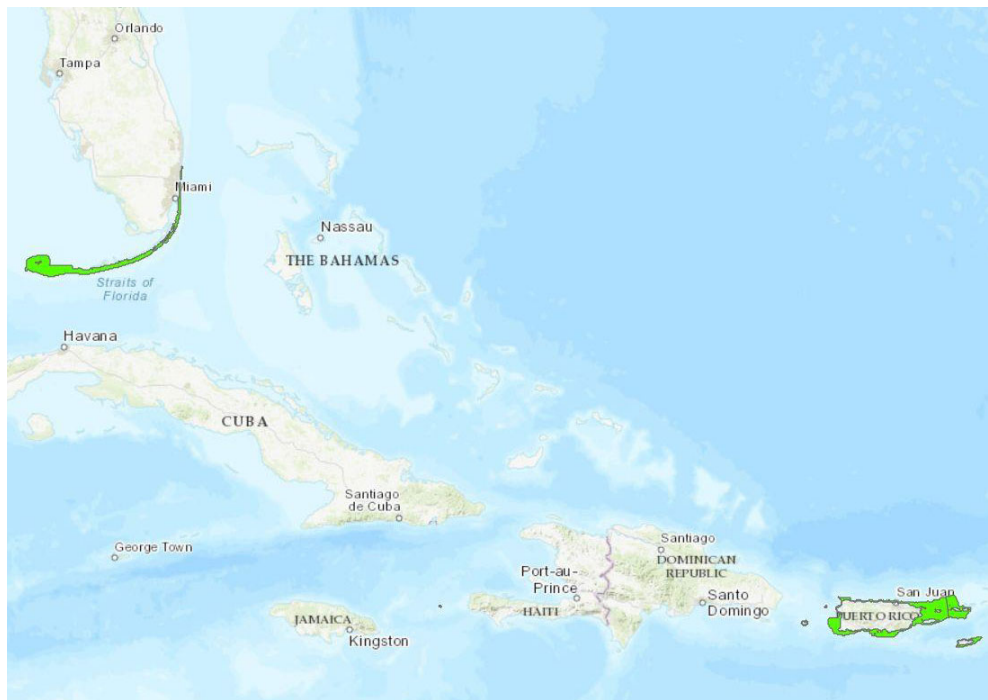
ESA-listed as threatened February 2024



Naguabo Queen Conch Hatchery in Puerto Rico

Caribbean corals (5 species)

Designated critical habitat August 2023



Nassau grouper

Designated critical habitat January 2024



Photo Credit: Enric Sala

Examples of NMFS Listed Species

Common Features

Aquatic Habitats

Including shallow freshwater

Large Ranges

Often large part of a state

Highly Mobile

Move throughout range during their life



Areas We Consult on Endangered Species/Habitat



Freshwater, estuarine, and coastal areas
of U.S. states and territories

NMFS Recent & Active Pesticide Consultations

FIFRA Registration Review Pesticide under Consultation	Final BiOp	Label changes
Bromoxynil & Prometryn	June 2021	In effect
Metolachlor & 1,3-D	June 2021	In effect
Chlorpyrifos, Malathion, Diazinon	June 2022	Currently Scheduled for August 2024
Carbaryl & Methomyl	January 2024	Fall 2025?
Atrazine, Simazine, Glyphosate	TBD	NA
Clothianidin, Imidacloprid, Thiamthoxam	TBD	NA

NMFS Recent & Active Pesticide Consultations

FIFRA New Registration/Active Ingredient Pesticide under Consultation	Final BiOp	Note
Enlist	N/A	No NMFS species
Sulfoxaflor	TBD	
Inpyrfluxam	TBD	
Pyraclozil	TBD (CA only)	
Fluazaindolizine	N/A	No NMFS species
Cyantraniliprole	TBD	

Streamlining process for the 4 in pink above, as well as future active ingredient registrations

NMFS Endangered Species Mitigation Framework

- Standardize mitigation options (e.g. EPA's menus, pick-list)
- Focus on areas where mitigation is most needed

Geographically-specific mitigations “Pesticide Use Limitation Areas” (PULA) needed if pesticide application is:

- Within the species range AND,
 - Within a specified distance from habitat AND,
 - Dependent on application parameters chosen

General label mitigations apply to all areas regardless of PULA

Where and what mitigations are needed?

Bulletins Live! Two -- View the Bulletins

For assistance in using Bulletins Live! Two, [view the tutorial](#). Also see [background notes](#) and a [quick start guide for BLT](#).

Directions

This tool displays Pesticide Use Limitation Areas (PULAs) for products with active Endangered Species Protection Bulletins. To generate a printable bulletin, please follow these steps:

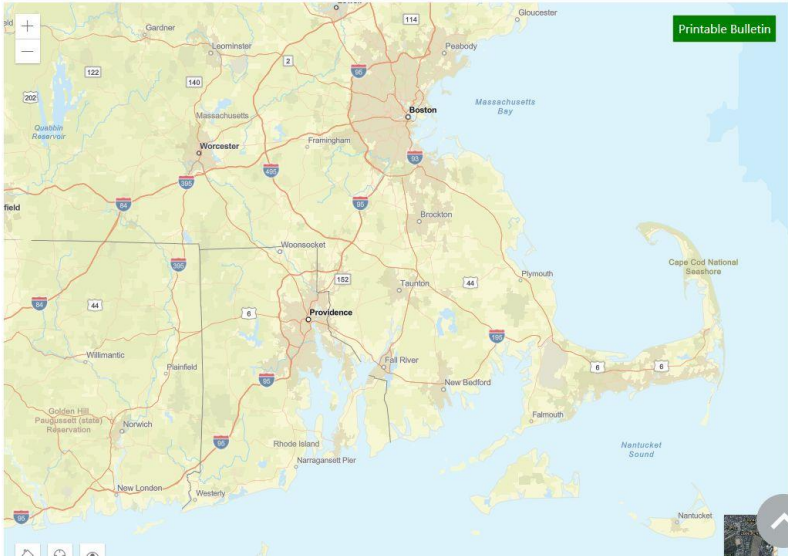
1. Navigate to your intended pesticide application area by using the "Location Search" tool or panning and zooming on the map itself.
2. Select your Application Month from the Application Date dropdown.
3. Search for a specific pesticide product using the EPA registration number and selecting from the search results. If you

[Unpin](#)

Location Search:

Application Month:
September 2022

EPA Registration Number:



End-user selects:

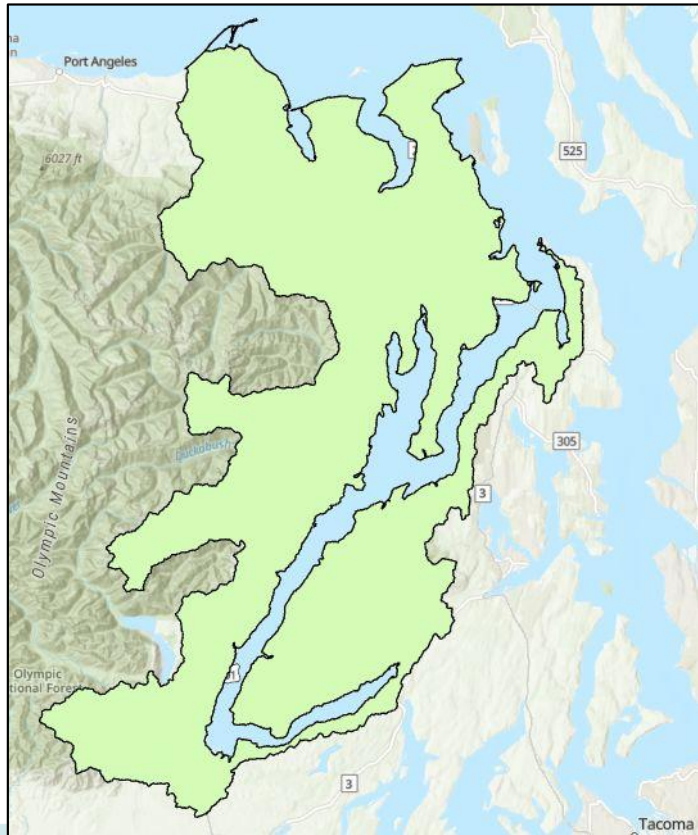
Location, Month, Product

Bulletin provides:

ESA mitigation, if any exists

Pesticide Use Limitation Areas

Example: Chum Salmon Hood Canal summer-run

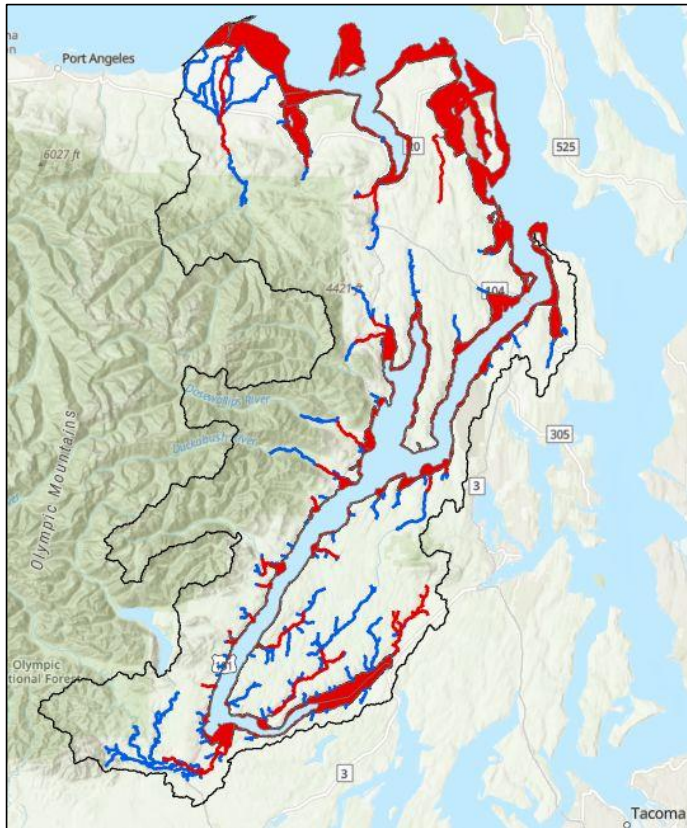


Start with species range



Pesticide Use Limitation Areas

Example: Chum Salmon Hood Canal summer-run



Identify key rivers and habitat

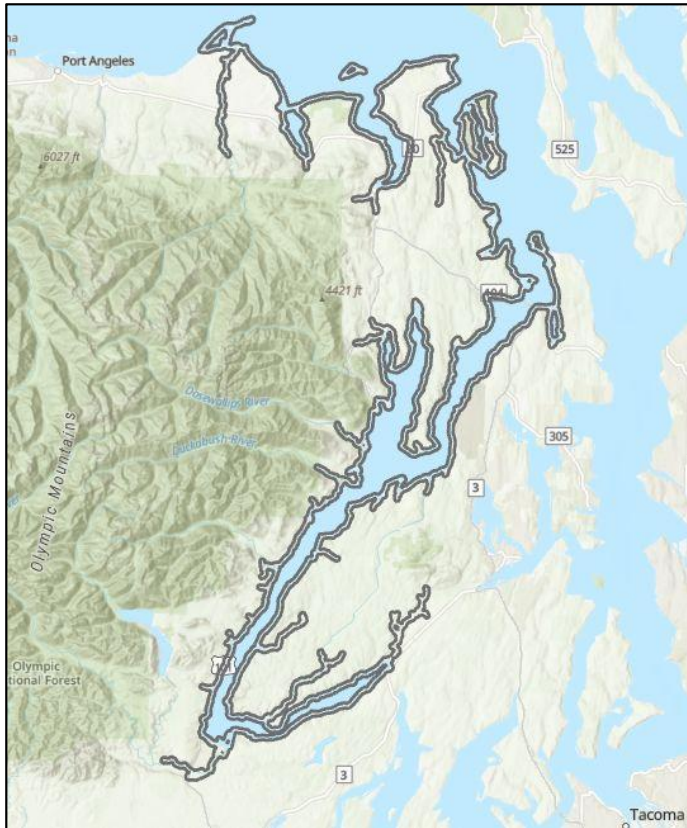
Red = Designated Critical Habitat

Blue = Identified chum salmon rivers



Pesticide Use Limitation Areas

Example: Chum Salmon Hood Canal summer-run



Select a subset of waterbodies for protection

Apply a buffer

Voila!

Resulting corridors are Pesticide Use Limitation Areas (PULAs)

Pesticide Use Limitation Areas



Example: Chum Salmon Hood Canal summer-run

Depending on the species and pesticide, large portions of the PULA may effectively require no additional restrictions beyond the general label mitigations.

PULA - Drift Mitigation

The “Bulletin” will describe what mitigation, if any, is needed

Example Methomyl (not yet implemented)

Airblast application rates ≥ 0.5 lb methomyl/A; Implement **one** of the following:

- Maintain a functional riparian system > 10 m wide alongside waterways, OR
- Do not apply within 55 feet of aquatic habitats when wind is blowing toward the aquatic habitat.

When wind is not blowing toward the habitat, the current general label restriction of at least 25 feet applies

PULA - Runoff Mitigation

The “Bulletin” will describe what mitigation, if any, is needed

Example Methomyl (not yet implemented)

In field application rates <0.5 lb methomyl/A: Runoff reduction measures for at least 50 points

* Examples* of Runoff Pick-List Mitigation Options	Points
Filter Strip	30
Mulching with natural materials	30
Vegetated ditches	30
Functional riparian system along waterways >5 m wide	15 - 80
Water and sediment control basin	55
Irrigation and drainage tailwater recovery	55
Small Area Applications <0.1A	80
For More Pick-List Options Please Refer to EPA’s Bulletins Live Website	

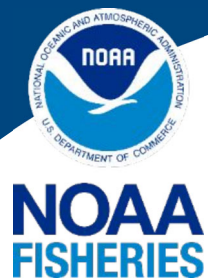


Things We Are Working On

- Adding more mitigation options
- Making mitigation picklists “living”
- More focus on site-specific factors
- Aligning mitigation approach with EPA
- Education
- Efficiency & speed of the process



Contacts at NMFS



Chief, NMFS Interagency Cooperation Division:

Tanya Dobrzynski
tanya.dobrzynski@noaa.gov

Pesticide consultation contacts:

Ryan DeWitt, M.E.S.
ryan.dewitt@noaa.gov

David Baldwin, Ph.D.
david.baldwin@noaa.gov

Nikki Wildart, M.S.
nikki.wildart@noaa.gov

Tony Hawkes, Ph.D.
tony.hawkes@noaa.gov

Karrin Goodman, M.S.
karrin.goodman@noaa.gov

