



Laboratory of Economics and Management

Sant'Anna School of Advanced Studies

Piazza Martiri della Libertà, 33 - 56127 PISA (Italy)

Tel. +39-050-883-343 Fax +39-050-883-344

Email: lem@sssup.it Web Page: <http://www.lem.sssup.it/>

# LEM

## Working Paper Series

### **Bennet Woodcroft and the Value of English Patents, 1617-1841**

Alessandro Nuvolari <sup>°</sup>

Valentina Tartari <sup>§</sup>

<sup>°</sup> LEM-Scuola Superiore Sant'Anna, Pisa, Italy

<sup>§</sup> Imperial College, London, UK

**2009/03**

**July 2010**

ISSN (online) 2284-0400

# BENNET WOODCROFT AND THE VALUE OF ENGLISH PATENTS, 1617-1841\*

by

Alessandro Nuvolari  
Sant'Anna School of Advanced Studies, Pisa, Italy

Valentina Tartari  
Imperial College, London, UK

## ABSTRACT

We examine the potentialities of a new indicator measuring the value of English patents in the period 1617-1841. The indicator is based on the relative visibility of each individual patent in the contemporary technical and legal literature as summarized in Bennet Woodcroft's Reference Index of Patents of Invention. We conclude that the indicator provides a reasonable proxy for the value of patents and that it can be usefully employed to shed light on the timing and scope of innovation during the Industrial Revolution. In particular, our indicator offers a suitable reconciliation between the patent records evidence and the Crafts-Harley view of the Industrial Revolution

Contact authors:

Alessandro Nuvolari, Laboratory of Economics and Management (LEM), Sant'Anna School of Advanced Studies, Piazza Martiri della Liberta' 33, 56127, Pisa, Italy. Telephone +39 050 883591. E-mail: [alessandro.nuvolari@sssup.it](mailto:alessandro.nuvolari@sssup.it)

Valentina Tartari, Innovation and Entrepreneurship Group, Imperial College Business School, Imperial College, South Kensington Campus, London, SW7 2AZ, United Kingdom. Telephone: +44 (0)207 59 43710. E-mail: [v.tartari@imperial.ac.uk](mailto:v.tartari@imperial.ac.uk)

---

\* We are particularly grateful to Christine MacLeod, Tim Leunig, Thomas Burr, Karl Gunnar Persson, Paola Criscuolo, Ken Lipartito, Jochen Streb, Jim Bessen, Bob Allen, Patrick O'Brien, Giulio Bottazzi, Pietro Dindo, Sean Bottomley, Marco Grazzi, Federico Tamagni and two anonymous referees for helpful suggestions on previous drafts. Davide Pirino has provided precious advice in the implementation of some statistical exercises. We would like also to thank participants at seminars in Cambridge, London, Geneve, Strasbourg, and at sessions of the 2008 Social Science History Conference in Miami and of the 2009 Economic History Society Conference in Warwick for stimulating discussions.

## 1. INTRODUCTION

Richard Sullivan (1989, 1990) has argued that patent statistics can shed light on the ongoing debates on the timing and the nature of innovation during the British the industrial revolution. The time series of English patents exhibits a significant structural break around 1760 and this would indicate, at least according to Sullivan, a momentous acceleration of technical progress taking place in that period. Furthermore, the distribution of patents across industrial sectors displays a rather low level of concentration pointing to the relatively widespread nature of inventive activities. Considered together these two findings may be regarded as providing evidence in support of the “traditional” interpretation of the Industrial Revolution as a phase of rapid and widespread technical change, while contradicting the revisionist view put forward by Crafts and Harley arguing for a more gradual dynamics, initially restricted only to a handful of modernized sectors (Crafts and Harley, 1992).

Sullivan's findings are, however, critically dependent on the reliability of patent counts as indicators of innovation. In fact, historians such as MacLeod (1988), O'Brien, Griffiths and Hunt (1995) and more recently Nuvolari (2004) and Moser (2005) have suggested that a sizable share of inventive activities was undertaken outside the coverage of patent protection. Therefore, one should be extremely cautious in gauging the dynamics of invention during the industrial revolution by looking at trends in patent counts. Furthermore, patents differed greatly in their quality and, as a result, the use of simple patent counts for reconstructing the patterns of technical change during this period may be unwarranted.

In this paper we examine the issue of the quality of patents during the industrial revolution. We provide a comprehensive appraisal of the quality of all English patents granted in the period 1617-1841 using a historical source that so far has been neglected. This source is the Reference Index of Patents of Invention, 1617-1852 edited by Bennet Woodcroft and published in 1855. For each patent, the Reference Index volume provides a list of references (either to technical and engineering literature or to legal proceedings and commentaries) where the patent specification is mentioned. Our basic assumption is that the relative “visibility” of each patent in Woodcroft's Reference Index provides a reasonable proxy for its relative technical and economic significance (only patents of non-trivial economic value are likely to be extensively discussed in the technical literature or at the centre of litigations). This approach is analogous to the use of patent citations as measures of the value of patents in the contemporary literature (Jaffe and Trajtenberg, 2002).

On the basis of Woodcroft's Reference Index, we assign a quality score to each patent in our period of interest. The first step of our study is to assess the reliability of our new indicator of patent quality by examining the determinants of our patent quality scores. We establish that patents classified as radical innovations by Baker (1976) and patents taken by inventors listed in the 2004 edition of the Oxford Dictionary of National Biography and in another selection of “great inventors” recently compiled by Allen (2009) are systematically characterized by high quality scores (also after controlling for other patent characteristics). This result, in our interpretation provides significant corroboration of the general reliability of our indicator of patent quality. Furthermore, the distribution of the quality scores both at the aggregate level and at the level of individual industries is very skewed and similar to those characteristic of modern patent data (Jaffe and Trajtenberg, 2002).

The second step of our analysis is to examine the distribution of high quality patents both over time and across industrial sectors. We find that, in comparison with the distribution of total

patents over time, the distribution of high quality patents is clustered on an earlier period. Additionally, the distribution of high quality patents across industries is significantly more concentrated than the distribution of total patents. In this way, our proposed indicator of patent quality seems to offer a way of reconciling the patent evidence with the “revisionist view” put forward by Crafts and Harley (1992). Concerning the timing of the industrial revolution, our findings seem in line with the traditional chronology, confirming that the second half of the eighteenth century (1762-1801) was characterized by a clustering of critical technical breakthroughs (high quality patents). In terms of the scope of the change, our findings indicate that, although patents were relatively widespread across industries, patents of relatively high quality were localized in a more restricted number of sectors. Our findings can be reconciled with the dynamics of productivity growth posited in the Crafts-Harley view (Crafts and Harley, 1992) by interpreting the pattern of innovation of the industrial revolution as a two-stage process, as suggested by Mokyr (1999, pp. 20-23) and more recently by Allen (2009, pp. 135-155). The first stage, broadly coinciding with the “take-off” of the traditional chronology (1760-1800) is the phase when, in a number of key-sectors, critical technical breakthroughs, or macroinventions in the sense of Mokyr (1990, pp. 13-14), such as steam engines and textile machinery were invented. The second stage, corresponding to the period (1810-1840), may be seen as the phase during which the potential of the macroinventions became fully realized by virtue of streams of microinventions that greatly improved their performance. Obviously, it is in the second phase that we should expect to find a significant impact of technical change on productivity growth

## 2. ESTIMATING PATENT QUALITY

One of the well-known limitations of the use of simple patent counts as indicator of technical progress is the different quality of the inventions covered by individual patents. This point is effectively made by O’ Brien, Griffiths and Hunt (1996, p. 165):

In their quantitative work, cliometricians and economists are prone to aggregate recorded inventions into an index, purporting to represent annual and cyclical variations in the volume of technological change within particular industries or across national economies as a whole. Such an index would be extremely useful to historians, but, except for entirely limited purposes, no such indicator can be constructed, since innovations recorded in patents and other documents are unknown and potentially variable proportion of changes in the total flow of invention. Even recorded inventions cannot be aggregated without some system of weighting to account for variations in their economic and technological significance.

So ideally, one would like to be able to assign to each patent a weight reflecting its technological and economic significance. Sullivan (1995), although acknowledging the issue of variations in patent quality, proposes that it may not be so severe in practice. We should remember that English patents until the reform of 1852 were very expensive, well above the average yearly household income. Thus, according to Sullivan, given the high costs of taking a patent, we could expect that inventors carried out informed assessments of the economic value of the invention in question before patenting it. In other words, we can imagine that the high patent fees acted as a filtering device, screening out inventions of particularly low quality.

In our view, Sullivan is too optimistic. We must remember that the English system was one of registration and not of examination and this means that patents were not subjected to any check concerning their technological feasibility. Furthermore, as noted by MacLeod (1988), in this period there were several heterodox uses of the patent system (e.g. using patents not for protecting innovations, but as an advertisement or reputation device; this, for example, was a common

practice in the medical business). This clearly aggravates the problem of variations in patent quality. In this respect, detailed examinations of the contents of patents for specific industries may provide us with important insights. An exercise along these lines has been recently carried out by MacLeod et al. (2003). They examined a sample of 2,010 British patents in steam engineering in the period 1800-1900 and found that 365 of these patents (corresponding to a sizable 18.1%) were granted to “perpetual motion” machines or other inventions which were not technically feasible. Notably, 217 of these impossible patents were granted in the period 1860-1900, that is well after the formulation of the principles of classic thermodynamics by Clausius and Kelvin in the early 1850s, which scientifically proved the impossibility of a perpetual motion engine.

However, recent developments in the economics of innovation suggest that the “nihilist” view of O’Brien, Griffiths and Hunt may not be completely warranted and that the problem of variations in the value of patents can be tackled rather effectively by constructing indicators of quality using patent characteristics that are likely to be positively correlated with the economic value of the patents.

The first example of this approach to the measurement of the value of patents, pioneered by Schankerman and Pakes, is the use of renewal data (Schankerman and Pakes, 1986; see also Bessen, 2008 for a more recent contribution in this vein). The idea behind this method is very simple. Most modern patent systems require patent owners to pay a renewal fee at fixed time intervals in order to keep the patent in force. In fact, only few patents are kept in force for their full lifetime. Thus, it is possible to estimate the value of an individual patent by considering the amount of renewal fees that the owner of the patent has paid to keep the patent “alive”. The underlying assumption is that a patent owner will pay the renewal fee for a given period only if he expects that this payment will be lower than the discounted streams of profits generated by the patent. Sullivan (1994) has applied this method to historical patent data by providing estimates of the value of British patents in the period 1852-1876.<sup>1</sup> The approach, however, cannot be used for the English patent system in the period 1617-1852 because the system did not impose the payment of renewal fees after the granting of the patent.

The second approach pioneered by Trajtenberg (1990) was to assess the economic value of patents using the number of citations received. The intuition is relatively straightforward: when a patent has received many citations, this means that it contains knowledge that was used in a large number of subsequent technological developments. The actual existence of a positive correlation between citations received and the economic value of patents was documented by Trajtenberg (1990) for the case of US patents in computed tomography and it has been subsequently confirmed in a number of empirical studies both for US and European patents (see Sampat and Ziedonis, 2004 and van Zeebroeck, 2009 for useful surveys). Another indicator that is gaining popularity is the use of information on the filing of legal oppositions or on patent litigations (Harhoff et al., 2003; Allison et al., 2004). The rationale underlying the use of this information is the idea that oppositions and legal disputes will tend to revolve around patents of higher economic value.<sup>2</sup>

---

<sup>1</sup> The findings of MacLeod et al. (2003) suggest a cautionary attitude towards the use of renewal data. In their study they find that many potentially valuable steam engineering patents were not renewed (this was most probably due to the limited financial resources of many patent holders). Vice versa, even some technically impossible inventions were kept in force for the full patent duration.

<sup>2</sup> A third approach in this stream of literature is the estimation of patent values by means of econometric models linking the market value of firms to their patent portfolio (see Bessen, 2009 for a recent example).

In this paper, we study the feasibility of employing an approach similar to the contemporary practice of constructing citation-based indicators of patent quality to the case of the English patent system in the industrial revolution period. The English patent system of the time did not prescribe the use of citations to previous patents for defining prior art. Therefore, we should look for an alternative historical source suitable of being used for constructing a plausible proxy for the value of patents.

### 3. BENNET WOODCROFT AND THE REFERENCE INDEX

Before the reform of 1852, a patent application could be lodged in anyone of these three Public Offices in London: Rolls Chapel Office, Petty Bag Office and Enrolment Office. In this way patent specifications were dispersed in three different locations. Furthermore, the system also lacked an effective search catalogue providing easy access to the specifications of existing patents. This was seen as an important problem: for an inventor was almost impossible to have a clear picture of the state of art covered by existing patents (Gomme, 1946; Hewish, 2000)

From the early 1830s, several patent agents had begun to construct lists and indexes of existing patents. With the reform of the patent system in 1852, the new Patent Office Commissioners decided to address this problem by funding a major publication of indexes and abridgments of the patent specifications from 1617 to 1852. The Commissioners entrusted this task to Bennet Woodcroft, who had already been working on his own at the construction of patent indexes for specific industries such as steam navigation and textile machinery.<sup>3</sup> Woodcroft was probably the optimal choice for this task. He was energetic and his efforts were sustained by a strong belief in the beneficial role of patents not only as a system of incentives for innovation, but also as a powerful “information system” for engineers (and also for historians).<sup>4</sup>

Woodcroft and his team of clerks undertook the construction of the system of indexes following a straightforward approach. Each patent was assigned a progressive number (on the basis of its date). The first volume published was a Chronological Index, followed by an Alphabetical Index and this in turn was followed by a Subject Index. These three indexes provided an indispensable orientation in the field for would-be patentees. The usefulness of these sources is also confirmed by the very intense use that historians of technology have done of this material. The set of indexes was completed in 1855 by the publication of the Reference Index (Hewish, 2000, p. 35-36). The index is structured in chronological/numerical order and for each patent it reports the office of

---

Also this approach is not feasible for the period of the first industrial devolution because the large majority of example were owned by individuals.

<sup>3</sup> Bennet Woodcroft (1803-1879) was himself a talented inventor, who took several patents (at least two of major technical importance). During his life, he enjoyed friendships with some of the most important engineers of the time such as J. Whithworth, J. Nasmyth and R. Roberts. In 1843 he opened in London an office as patent agent and consulting engineer. In 1847 he was appointed professor of machinery at University College. In 1852 with the passing of the Patent Law Amendment Act, Woodcroft was appointed assistant to the commissioners. He was in charge of the publication of all the specifications of patents for the period 1617-1852 together with the relative series of indexes. On Woodcroft's life and achievements, see Hewish, (1982) and Harrison (2006, pp.55-66).

<sup>4</sup> In 1851 Woodcroft in front of the Select Committee of the House of Lords on patent laws insisted on the advantages of implementing an effective index system and of printing the full patent specifications: “Anyone who had the ambition to become the historian of inventions, could not do better than take such a work on patents, because he would there not only find the true course of inventions, but he would also find every futile effort made in that direction.....It would be the most valuable encyclopaedia of invention ever published” (House of Lords, 1851, p. 403). For an account of the publication of Woodcroft's indexes, against the background of contemporary debates on the reform of the patent system, see MacLeod (2007, pp. 251-264).

enrolment where the specification was filed. Additionally, for each patent, the index gives a list of references providing information on the patent in question. These references comprise mentions in technical journals and books, law commentaries and reports, Record Office reports and other official publications such as Parliamentary Select Committees.<sup>5</sup> Remarkably, this source so far has received very little attention by historians (to the best of our knowledge the index so far has only been employed by Dutton for examining the outcome of a number of legal disputes over patents, 1984, pp. 78-79).<sup>6</sup>

A typical entry of Woodcroft's Reference Index is represented in Table 1. The patent in question is the one granted in 1769 to James Watt for the separate condenser. The entry gives precise references to technical and legal literature where the patent is mentioned, while the last line of the table indicates in which office the specification was lodged (in this case Rolls Chapel). Table 2 provides the example of another entry. This is for a patent covering an improvement in the Newcomen engine developed by William Symington. This was surely a valuable invention, but whose economic and technological significance was relatively minor in comparison to Watt's separate condenser.<sup>7</sup> For this patent, as one would have expected, the Reference Index contains a much lower number of references.

#### **Table 1 and 2 around here**

Table 3 contains a list of all publications that were referenced more than 10 times in Woodcroft's Reference Index over the period 1617-1841. In order to illustrate the changing coverage of different publications over time, the columns of the table show the number of references for different sub-periods, each of these covering a time interval during which 2000 patents, chronologically arranged, were granted. For example the first column contains the number of references for patents from number 1 to number 2000 (granted over the period 1617-1794). The last column gives the total number of reference throughout the entire period 1617-1841. Overall, the publications used in the compilation of Woodcroft's Reference Index can be classified in three broad categories: i) publications reporting latest developments in science and technology (in particular those embodied in patents recently granted), ii) engineering journals and books containing discussion of merits and limitations of specific technical solutions, iii) legal commentaries on patent laws and cases. We should note that this classification gives just a preliminary orientation to the contents of Woodcroft's Reference Index and that in several cases a specific publication may be not straightforwardly classified in one of the three categories. The first category contains specialized journals edited by patent agents that published regularly selections of patent specifications.<sup>8</sup> This specialized literature represented an important channel of information fuelling the emergence of the market for patented inventions identified by Dutton (1984) in the first half of the nineteenth century. The first important publication of this kind was the *Repertory of Arts and Manufactures*, first published in 1794, whose aim was to establish "a vehicle, by means of which new discoveries and improvements in Arts and Manufactures, may be transmitted to the public". The editors noted that a selection of "specifications of patents will

---

<sup>5</sup> The first edition of the Reference Index was published in 1855. A second edition based on a slightly more extensive number of references was published in 1862. In this paper we use this second edition.

<sup>6</sup> The publication of these indexes was followed by a further attempt to summarize and classify by subject all the existing patent specifications by publishing a series of volumes *Abridgments of Patent Specifications*. Each of these volumes contained a succinct description of all the patent specifications pertaining to specific technological subject.

<sup>7</sup> On Symington's improved Newcomen engine design, see Harvey and Downs-Rose (1974).

<sup>8</sup> See Harrison (2006, pp. 224-226) for an overview of the publishing activities of some early patent agents.

form a considerable, and, it is presumed, interesting part of this work.” (Anon., 1794, pp. i-ii). In the 1820s two noteworthy new journals that published regularly selections of patent specifications were launched: the London Journal of Arts and Sciences edited by William Newton, whose declared goal was to publish the “earliest information relative to every useful discovery and invention in practical mechanics, as well as such as other novel inventions as are applicable to the arts, manufactures and agriculture” (Newton, 1820, p. i) and the Register of Arts and Sciences first issued in 1824, that had similar editorial scope. Finally, The *Inventors’ Advocate and Patentee Recorder* first issued in 1839 aimed to become “an efficient medium of communication between inventors, patentees, capitalists and the public at large”. In terms of contents, the journal set itself the task to give its readers “earliest, and exclusive information with matters connected with science and art, discoveries and inventions”. The journal would publish the full specification of the “most important” patents (Anon., 1839, p. 1). The second category contains engineering journals and books that, in general, did not limit themselves to summarize the contents of patents, but discussed in more depth the merits and limitations of the technical solutions contained in some patented inventions. For example, Luke Hebert, a famous patent agent, with the *The Engineer’s and Mechanic’s Encyclopedia* intended to offer a “judicious selection of all those machines, engines, manipulations, processes and discoveries, that now lie scattered throughout several hundreds of volumes of the scientific journals or are inscribed in obsolete characters upon the rolls of the Court of Chancery in the form of specifications of patent inventions” (Hebert, 1836, p. ii). *Mechanics’ Magazine* and *The Artizan* can be regarded as journals that falls in this category. The aim of *Mechanics’ Magazine* was “to promote a better acquaintance with the history and principles of the arts” together with “earlier information...of new discoveries, inventions and improvements” (Anon., 1823). Technical treatises such as *Ure’s Cotton Manufacture* and *Stuart’s History of the Steam Engine* also belong to this second category. The third category comprises publications that were clearly more aimed to be digests of patent cases, such as the famous patent treatises by Carpmael, Holroyd and Webster. However, even in these publications, legal considerations were often interwoven with technical discussions. The overall impression is that the bulk of the publications used in the compilation of the Reference Index is largely of technical nature (specialized journals publishing selections of patent specifications or more elaborated technical commentaries of specific patents). The extension of the publishing activity represented in Table 3 suggests that, even if before 1852 patent specifications were of difficult access because dispersed in three different offices, a considerable amount of the technical information embodied in patent specifications was actually placed in the public domain by virtue of the growth of this specialized literature that reported and discussed the contents of patents (Mokyr, 2009, p. 409; Moser, 2010).

### Table 3 around here

We suggest that the number of references listed in Woodcroft’s Reference Index provides a good indication of the “visibility” of a specific patent in the contemporary technical and legal literature. In this paper we study the feasibility of constructing an index of the economic value of patents based on the number of references listed in Woodcroft’s Reference Index.<sup>9</sup> Our assumption is that patents which are more significant from a technical point of view will tend to be cited more often in the technical literature. Furthermore, we also assume that patents with high economic

---

<sup>9</sup> A similar exercise has been carried out by Sullivan (1989, pp. 431-433). His quality indicator is simply the number of different classes in which a patent is listed in Woodcroft’s Subject Index. This would be analogous to the count patent classes for contemporary patents, so in our view, it should be properly considered a measure of generality rather than of quality (Jaffe and Trajtenberg, 2002)



importance will be more likely to become the subject of legal controversies. Thus, we propose that the number of references listed in Woodcroft's Reference Index can serve as a reasonable proxy of the economic value or "quality" of the patent.<sup>10</sup> This approach is obviously analogous to the use of patent citations as proxy for the economic value of patents adopted in the modern literature on innovation. On reflection, there are two main limitations of the Reference Index as indicator of patent value when compared to patent renewals and citations. With respect to renewals, the number of references has the disadvantage of not being a metric susceptible of a straightforward economic interpretation, whereas renewals provide a direct assessment of patent values in monetary terms. With respect to patent citations, the number of references has the disadvantage of being a composite indicator of the visibility of a patent in the contemporary specialized literature (ie, publications can mention the same patent for different motivations). Instead patent citations are the outcome of a fairly "regulated" search process aimed at defining the prior art of the patented invention. However, in comparison to modern patent citations, the number of references in the Reference Index has the advantage of being the product of a relatively homogenous source (Woodcroft and his team of clerks), whereas modern patent citations are generated by heterogeneous sources (inventors, patent attorneys and patent examiners). Furthermore, it is also increasingly recognized that citing behavior in modern patent systems is affected by strategic considerations, eg. an inventor may be reluctant to cite a patent that may disrupt some novelty claims. This problem, instead, is not present in the case of the Reference Index. In fact, it is worth noting that the nature of the references of the Reference Index is more similar to that of citations in modern scientific literature than to contemporary patent citations.<sup>11</sup> In this sense, our approach is akin to bibliometric studies providing assessments of the importance of a scientific paper on the basis of the citations received in the subsequent literature.

#### 4. THE CONSTRUCTION OF THE PATENT QUALITY INDICATOR

Our approach is to assign to each patent a quality score that is equal to the number of references listed in Woodcroft's Reference Index. In our sample, this indicator has a lower bound of 0 (patents with no references and for which the index contains only information concerning the public office in which the specification was lodged) . We will refer to this indicator as Woodcroft Reference Index (WRI).

**Figure 1 around here**

**Figure 2 around here**

Figure 1 shows the annual number of granted patents over the period 1617-1841. The gap in the series corresponds to the period of the Commonwealth and the Protectorate (1641-1660) when the patent system was practically dismantled and no patents were granted (MacLeod, 1988, p. 16). Figure 2 displays the yearly average number of references per patent in Woodcroft's Reference Index as a thin line. Figure 2 also shows as a thick line the average number of references for the following subperiods: 1617-1701, 1702-1721, 1722-1741, 1742-1761, 1762-1781, 1782-1801, 1802-1811, 1812-1821, 1822-1831, 1832-1841 and as a dotted thick line the yearly average number of

---

<sup>10</sup> The Reference Index volume was prepared in the early 1850s. This means that Woodcroft and his team of clerks, due to lack of hindsight, may have faced more difficulties in preparing accurate and complete list of references for the most recent patents. In order to minimize this problem, in this paper we restrict our analysis to the period 1617-1841. This means that each patent in our sample can at least enjoy a period of ten years for becoming "fully visible" in the technical and legal literature.

<sup>11</sup> On strategic considerations affecting citing behavior in patents, see Lampe (2010) and for cautionary considerations on the use of patent citations as indicators of patent value, see Bessen (2008))

references smoothed using the Hodrick-Prescott filter.<sup>12</sup> It is quite clear that the time series of the yearly average number of references shows a cyclical behavior around an upward trend, revealing a propensity of more recent patents to be mentioned in a higher number of references. This increase in the number of references reflects both the sustained expansion of the English literature on science and technology taking place during the eighteenth and early nineteenth century (Mokyr, 2009, pp 46-48) and the growth of the specialized literature on patents, also related to the growing public awareness of the working of the patent system (MacLeod, 1988, pp 146-147). Clearly, if one were to use simply the number of references as indicator of patent quality when comparing patents granted in different years, he could obtain results that are possibly biased by the variations over time in the number of references per patent.<sup>13</sup> This type of problem is indeed present also in modern patent data. Also in this case the propensity to cite other patents is not constant over time. For example, the computerization of patent databases during the 1980s enhanced the search of prior art for inventors and patent examiners leading to an increase in the average number of citations per patent (Hall et al., 2002, p. 418-419). A common way to solve this issue is to divide the citations received by a given patent by the mean of citations received by all patents belonging to the same time cohort. This means using as a benchmark citation intensity for assessing the quality of an individual patent, the average number of citations received by patents of the same time cohort. This procedure is usually referred to as “fixed effects” approach (Hall et. al., 2002, pp 437-441). Here we adopt the same type of adjustment by dividing the number of references of each individual patent for the average number of references received by all patents in the time cohorts corresponding to the fixed sub-periods used for the drawing the thick line of figure 1. This is our adjusted indicator of the economic value of patents, which we shall call adjusted Woodcroft Reference Index (WRI\*).

#### **Table 4 around here**

As a first step, it is important to check how sensitive the quality indicator is to the choice of the time intervals employed for benchmarking the reference intensity. Table 4 reports the Spearman rank correlations matrix between patents whose quality has been measured using different types of fixed-effects adjustments. The first column (“Woodcroft raw”) refers simply to patents whose quality was measured by the “raw” number of references without any type of adjustment, the second column refers to patents whose quality was measured using as benchmark the yearly average number of references, the third column refers to patents whose quality was measured using as benchmark the average number of references for the fixed subperiods of figure 2, the fourth column refers to patents whose quality was measured using as benchmark the time series of the yearly average number of patents smoothed using the Hodrick-Prescott filter, the fifth column refers to patents whose quality has been measured by dividing their number of references by the number of publications retrieved in the Goldsmiths’-Kress Library of Economic Literature using the keyword “patent” in the publication years corresponding to the fixed subperiods of figure 2.<sup>14</sup> The Goldsmiths’-Kress Library is one of the largest collections of publications in English covering the period 1450-1850. It is important to note that, notwithstanding its title, the collection is not restricted only to economic subjects, but it contains a large amount of engineering publications and legal treatises (including most publications listed in table 3). Therefore, the aim

---

<sup>12</sup> We have used a parameter of 6.25 for the Hodrick-Prescott filter as suggested by Ravn and Uhlig (2002)

<sup>13</sup> The growth in the average number references per patent is mostly accounted for the increasing number of specialized periodicals reporting and commenting the specifications of selections of contemporary patents.

<sup>14</sup> We have retrieved the number of publications using the search catalogue of the digital edition of the Goldsmiths’-Kress Library published by Gale publishing.

of this last column is to examine the effects of a benchmark that does not reflect only the variations over time of the references in Woodcroft's index, but instead captures the more general trends in broad literature (books and journals) related to patents. Table 4 shows that all indicators of patent quality calculated with different fixed-adjustments procedures appear strongly correlated with each other. Furthermore, even the use of a simple "raw" counting of the number of references as quality indicator is strongly correlated with the indicators calculated using the more sophisticated adjustment procedures. The main reason for this result is that important patents (such as James Watt's patent for the separate condenser) tend to have, in comparison to other patents, a significantly higher number of references. For this reason, even without fixed-effects adjustment, they will receive a high quality score also when compared to patents belonging to later time cohorts characterized by higher average reference numbers. Overall, the results of table 4 indicate that the use of different approaches for benchmarking the reference intensity is not likely to have major effects on the relative assessment of patents (in the sense that the different approaches will tend to single out highly overlapping groups of patents as those with a high quality). For this reason, we think that the use of quality indicator based number of references is better suited for the identification of groups of high-quality patents (in this way we can hope of dealing in a more effective way with measurement errors at the level of individual patents), rather as a precise quality weight for measuring inventive output. The use of the quality indicator for the identification of groups of high-quality patents has also the advantage of not drawing too strong conclusions based on the peculiar metric of the indicator. In the rest of this paper we will use the time cohorts corresponding to the subperiods of figure 2 to construct our quality indicator adjustment using the fixed-effects procedure.

## 5. ASSESSING THE RELIABILITY OF THE PATENT QUALITY INDICATOR

To assess the reliability of the indicator of patent quality based on Woodcroft's Reference Index we need to compare it with some independent measure of patent quality. To perform this task, we will construct four lists of "important patents" that can be used to validate our patent quality indicator.

Khan and Sokoloff (1993) have first used inclusion in biographical dictionaries as a method for identifying "great inventors" (ie, those responsible for the most historically significant inventions) in the US case. More recently Khan and Sokoloff (2008) have carried a comparative study of American and British "great inventors" using the same method. Khan and Sokoloff (2008) have constructed their British sample of "great inventors" using the 2004 edition of the Dictionary of National Biography (DNB). Here we will follow this type of approach and consider patents awarded to inventors included in the Dictionary of National Biography as of particular historical significance. In our period of interest, we have been able to retrieve 256 patentees whose biographical profile is included in the DNB. These inventors were responsible for 723 patents. This is our first list of "important patents".

Allen (2009, pp. 242-271) has also recently constructed two samples of British "great inventors" with a specific focus on the economic significance of the inventions they produced. Allen's first list of "great inventors" has been constructed by considering all the inventors active in Britain between 1660 and 1800 mentioned in Singer's History of Technology. This sample has been integrated also considering Mokyr (1990) and Mantoux (1928). This list contains 54 inventors that were responsible for 133 patents in total. Allen's second list of inventors is more restricted and contains 10 "superstar" inventors that can be regarded as responsible for genuine "macroinventions" in the sense of Mokyr (1990). These "macro inventors" were responsible for

27 patents. Allen's lists of "great" and "macro" inventors are the sources of our second and third list of "important patents"

Another interesting source for the identification of important patents is Baker (1976). Baker's list is meant to include the "most important" patents granted in Britain over the period 1691-1971. An initial selection was originally compiled by the staff of the enquiry desk of the British patent office in the early 1970s. This selection was extended by Baker through an extensive search in the technical and historical literature (Baker, 1976, pp. 7-25). Baker's list of important patents has been employed by Kleinknecht (1987) and Silverberg and Verspagen (2003) for testing the Schumpeterian hypothesis of the existence of temporal clusterings of radical innovations. In our period of interest, we have 137 patents belonging to the Baker list. This is our fourth list of "important patents".

Table 5 shows that there is a rather imperfect overlap between the lists of patents identified using the DNB, Allen's two lists of inventors and the Baker list. In table 5, the diagonal cells contain the total number of patents in each of these lists. Cells outside the diagonal instead contain the number of patents that are included simultaneously in two lists. The most significant differences are clearly between the Baker list and the other great inventor lists (both DNB and Allen's). In particular, respectively 60% (ie, 82 patents) and 77% (ie, 105 patents) of the patents in the Baker list are not included in the DNB list and the Allen's lists. In this perspective, these lists of "important patents" seems to reflect a number of relatively independent assessments of the historical significance of inventions and, for this reason, they can be an interesting yardstick for judging the reliability of our indicator of patent quality.

#### **Table 5 around here**

Our first step is to check whether there are significant differences in the quality scores between patents included in our four lists of "important patents" and the rest of the sample. This is done by performing the non-parametric test of stochastic equality suggested by Fligner and Policello II (1981), which is particularly suited for our case in which we must compare samples of different numerosity possibly characterized by non normal distributions of unknown shape. Given two random variables X and Y, the Fligner-Policello statistic determines whether the  $\text{Prob}[X > Y] > 0.5$ . In other words, the Fligner-Policello statistic reveals whether by randomly selecting two patents, one from the "important patents" list and one from the rest of the sample, the probability that the patent from the "important patents" list has a higher quality score is higher than 0.5.<sup>15</sup>

Table 6 contains the results of these Fligner-Policello tests of stochastic equality for the four different lists of "important patents". The first row of table 6 reports the results for the period 1617-1841. We perform these tests of stochastic equality also for subsets of our total patent sample. The second row of table 6 considers only patents granted after 1741. In this way, we want to remove from the sample the erratic procedures of the early patent system. In particular, in the early period, patentees were asked only to provide a cursory description of the invention. The filing of a complete written description of the invention (specification), became established practice only in the 1730s (MacLeod, 1988, pp. 48-49). The third row considers only patents granted after 1781. With this third subset we would like to control for the effect of Liardet vs Johnson (1778) decision that established that the specification should enable anyone skilled in the

---

<sup>15</sup> As a robustness check we have also carried out the Mann-Whitney-Wilcoxon test, which is the traditional test to assess the equality means between two samples, obtaining fully consistent results with those of table 6.

art to construct the invention. After this decision the specification was definitely recognized as a fundamental aspect for the legal validity of the patent (MacLeod, 1988, p. 49). The final row considers all patents excluding those subjected to trials in court.<sup>16</sup> Since patent lawsuits were very costly (MacLeod, 1988, pp. 58-74), it seems unlikely that patents of minor economic importance were subjected to extensive litigation. Hence, references discussing legal issues may be expected to be related to the economic value of patents. In this sense, it seems appropriate to have an indicator that combines references to technical and legal literature (also because in several cases it is difficult to classify the nature of the source used in the index). On the other hand, patents subjected to court trials can attract references because the lawsuit in question represented an important legal precedent, rather than by virtue of their technological significance, so by removing these patents from the sample we may expect to have a more restricted set of patents in which the distribution of references is reflecting, to a major degree, the genuine technological content of the patents, rather than legal issues. It is important to check whether the relationship between the quality indicator and the “important patents” is confirmed also for this restricted set of patents depurated by lawsuits.

#### **Table 6 around here**

The results presented in table 6 provide a first validation for the construction of quality weights based on the Reference Index. In all cases, the hypothesis of stochastic equality is rejected at a significance level of 1%, indicating that the patents belonging to the list of important patents have a higher probability of assuming higher quality scores than patent in the rest of the samples.

The second approach we adopt in order to examine the relationship between “important patents” and the quality index is to consider our lists of “important patents” as a “treatment” and to examine whether patents that receive this type treatment have a higher odds of being in the highest percentiles of the distribution of our quality indicator, WRI\*. In particular, we consider three cases: patents with values that are in the top 50%, 10% and 1% percentiles of the distribution of WRI\*.<sup>17</sup> Also in this case we perform this exercise for different selections of the patent sample. Our results are displayed in table 7. The table shows in all cases odds-ratios that are greater than 1 (an odds-ratio of 1 indicates that the odds of a patent of being in the high percentiles quality group is the same for patents in the “important patents” lists and in the rest of the sample) and all significant at the 1% level. This means that patents that are in the lists of important patents have consistently a much higher probability to appear in the three outcome groups (top 50%, top 10% and top 1%) than patents that are not included in the lists. Note that the value of the odds-ratios are higher when we consider as outcome the inclusion of the patent in the top 1% percentile of the quality distribution.

#### **Table 7 around here**

The positive relationship between “important patents” and the quality indicator is also obtained through multivariate analysis that controls for the possible influence of other factors. In this case, our dependent variable is the number of references listed for each patent in Woodcroft’s Reference Index. As we have mentioned, WRI is an integer number that can take values between 0 and the maximum number of references. Thus, the appropriate estimation technique is a negative binomial regression. Our covariates are the following:

---

<sup>16</sup> A list of patents subjected to court trials is provided in Woodcroft (1862, pp. 669-710).

<sup>17</sup> See Agresti (2002, pp. 36-104) for an introduction to the use of odds-ratios in case-control data.

- i) Dummy variables indicating whether the patentee is a DNB inventor, Allen “Great Inventor”, Allen “Macro Inventor” or the patent is in the Baker list.
- ii) Engineer: a dummy variable indicating whether the occupation of at least one of the patentees is related with engineering type of trades.
- iii) Number of inventors: a variable indicating the number of inventors.
- iv) Patent experience: a dummy variable indicating whether at least one of the patentees had already been granted at least a patent before the one in question.
- v) Foreign communication: a dummy variable indicating whether the patent is the outcome of a communication from abroad.
- vi) Metropolitan: a dummy variable indicating whether the residence of at least one of the patentees is in a town with more than 50,000 inhabitants.<sup>18</sup> Information on patentees’ occupations, number of inventors, previous patents, foreign communication and patentees’ addresses were all retrieved from Woodcroft’s Chronological Index (Woodcroft, 1854). Information on town sizes was retrieved from Wrigley (1985).
- vii) Insider: a dummy variable indicating whether the invention patented is related with the occupation of the patentee (e.g., a medicine for physician or a plough for a farmer). Note that the variable has been constructed in such a way to consider only the cases in which the inventor was clearly connected with the occupation of the patentee. When this dummy variable takes a value of 0 this does not mean that the inventor in question is an outsider, but simply that it was not possible to establish with full certainty whether he was an insider in relation to the subject matter of the patent in question. Given the degree of uncertainty in the definition of the variable, we should obviously interpret the estimates of this coefficient with caution.

On the basis of the description of the invention contained in Woodcroft’s Chronological Index (Woodcroft, 1854), we have also classified patents in 21 industries (agriculture, carriages, chemicals, clothing, construction, engines, food, furniture, glass, hardware, instruments, leather, manufacturing, medicines, metallurgy, military, mining, paper, pottery, shipbuilding, textiles).<sup>19</sup> This classification is very similar to the one adopted by Moser (2010). We include in the regressions, dummy variables for controlling for industry effects (textiles is the base reference) and we use time dummies for controlling for the rise over time in the number of references per patent. For the time dummies we have adopted the same subperiods used for computing the adjusted index (WRI\*). In this case the period 1832-1841 is the base reference.

The results of the negative binomial regressions are reported in table 8. The coefficients of the variables related to significant patents (DNB, Allen “Great Inventor”, Allen “Macro Inventor”, Baker) are all positive and significant. Furthermore, as one could have expected, the coefficient for Allen’s more restricted list of “Great Inventors” is higher than the one for DNB inventors and, in turn, the one for the “Macro Inventors” is higher than the one for Allen’s great inventor list. Concerning the other variables, in some specifications the variable “engineer” appears to be positive and significant. This finding is consistent with the literature that pointed to mechanical engineering as the critical innovative sector of the first industrial revolution (von Tunzelmann, 1995, pp. 104-122). In some specifications, the variable “foreign communication” is significant with a negative sign suggesting that patented inventions that were imported from abroad were not of particularly high quality. Finally, the coefficient of the “insider” variable is negative and

---

<sup>18</sup> We have also carried out estimations defining the variable “metropolitan” in terms of residence in towns with more than 100,000 inhabitants, obtaining analogous results.

<sup>19</sup> In our sample of 9210 patents covering the period 1617-1841, we have not been able to assign only 11 patents to a specific industry due to unclear or insufficient description of the invention.

significant which seems to indicate that the inventions produced by “insiders” were of somewhat minor quality relatively to the rest. In the innovation literature it has been pointed out that radical inventions are frequently made by outsiders, who may enjoy the advantage of an “uncommitted mind” and in this way have fresh insights on the possible solutions of specific technological problems (Jewkes et al., 1969). In the period we are considering, consistently with our findings, O’Brien et al (1996) have contended that, in the textile industries, the most important inventions were made by outsiders who had a pre-professional interest (scientific and technological curiosity, fascination for mechanical contrivances, etc.) in invention, whereas the inventive activities of insiders were mostly of incremental nature (on the possible advantages of outsiders as inventors in this period, see also O’Brien, 1997). The results of table 8 are also confirmed when performing the regression analysis on subsets of patents restricted to the periods 1742-1841 and 1782-1841 (in order to remove the early periods in which the legal status of the specification was not fully developed) and on the subsets excluding the patents disputed in court cases (in order to focus the analysis only on patents receiving mostly technical references). The results of these regression are reported in Appendix (tables A.1,A.2, A.3).

#### **Table 8 around here**

Table 9 reports descriptive statistics for WRI\*scores across industries. Table 9 suggests the existence of systematic differences in WRI\* scores across industries. This is particularly evident when looking at the median values and maximum values of the quality distributions. Figure 3 shows the distribution of WRI\* across industries using histograms. All the distributions are right-skewed (this also confirmed by the summary statistics reported in table 9).<sup>20</sup> This means that the majority of patents tend to be negligible (the number of patents with WRI\*=0 is indicated in the last column) or of very low value and that only few patents have high quality scores. Further, all industrial sectors seems capable of producing at least some “high-quality” patents, although “technological blockbusters” (patents with quality scores that are more than one order of magnitude higher than the time cohort average) are experienced only in a few sectors. This is fully in line with the findings of the modern literature on the value of patents. All the modern indicators of patent quality (number of citations received, renewal data and survey data based on inventors’ self-assessment) have right-skewed distributions similar to those of figure 3 (see Silverberg and Verspagen, 2007 for a thorough discussion). Notably, this holds also at the level of individual industries (Giuri et al., 2007, pp. 1120-1121). Therefore, in our interpretation, the distribution of the quality index provides further corroboration of WRI\*as a plausible indicator of patent quality.

#### **Table 9 around here**

#### **Figure 3 around here**

### **6. THE DISTRIBUTION OF HIGH QUALITY PATENTS OVER TIME AND ACROSS INDUSTRIES**

What are the implications of the indicator of patent quality based on Woodcroft’s Reference Index for the debate concerning the timing and scope of the industrial revolution ? Figure 4 charts the cumulative distribution of patents of different quality over time. The thin lines represent the cumulative distribution of patents that are in the top 0.5%, 1% and 5% percentiles in terms of

---

<sup>20</sup> The hypothesis of normality is rejected for the entire sample and for all technology classes (Shapiro-Wilks test).

their quality scores measured using WRI\*. The thick line represents the cumulative distribution of the total number of patents. Figure 4 may be interpreted as comparing the evolution over time of the stock of knowledge embodied in patented macroinventions (the top percentiles) and in patented microinventions (the total number of patents). The dotted line represents the cumulative distribution of a set of “important patents” (this set contains all the patents that have been mentioned in at least two lists of important patents used in the previous section: DNB, Allen “Great Inventor”, Allen “Macro Inventor” and Baker). We have plotted the cumulative distribution of this set of patents in order to compare it with those of the patents in the top percentiles of WRI\*. Figure 4 shows that the cumulative distribution of high quality patents tends to “anticipate” the cumulative distribution of the total patents. In particular, the cumulative distribution of the top 0.5% percentile reaches a level of 50% in 1794 (in the same year the cumulative distribution of “important patents” is also reaching a level of 50%), whereas the cumulative distribution of total patents reaches a level of 50% only in 1823, almost thirty years later. It is instructive to compare this time profile with the estimates of productivity growth produced by Crafts and Harley. According to Crafts’ most recent estimates, total factor productivity growth was negligible in the period 1760-1780. It increased to 0.3 % per year in the period 1780-1831 and from there to 0.75 % per year in 1831-1873 (Crafts, 2004, p. 522). It is relatively straightforward to put forward an explanation that accounts for these temporal patterns: the classical take-off period (1760-1801) should be regarded as the phase in which several macroinventions in the sense of Mokyr (1990) emerged. In this interpretation, the time profile of the high quality patents in figure 4 (in particular the top 0.5%) is capturing the time dynamics of these macro inventions. However, the impact of these macro inventions on productivity growth became fully manifest only after a stream of micro-inventions (possibly represented in figure 3 by the cumulative distribution of total patents) improved their technological performance and cost effectiveness. In this way, the distribution over time of high quality patents may be reconciled with the dynamics of productivity growth posited in Crafts and Harley (1992) revisionist account.

**Figure 4 around here**

Turning our attention to the scope of technical change, it is possible to use the quality indicator to carry out a simple accounting exercise aimed at singling out the relative contribution of different industries to overall technical change during this period. Given the imperfections of our indicator, we should consider this accounting exercise nothing more than a rough back of envelope type of calculation. In particular, since we are going to use the mean of WRI\* as a weight for the quality of patents, we will obtain results that are smoothing the impact of radical innovations over many patents, neglecting the distinction between macro and micro innovations. The results of the exercise are reported in table 10. The first two columns of the table contain the number of a patents in each industry and their average quality (WRI\*). The third column of the table contains the patenting rates calculated by Moser (2010). These patenting rates are computed as the share of British inventions at the Crystal Palace exhibition of 1851 that were patented. The purpose of this column is to provide some indication of the different propensity to patent of different industries. The fourth column reports the share of each sector in total inventive output computed using the number of patents. The fifth column reports the share of each sector in total inventive output computed as number of patents weighted by their average quality. The sixth column reports the shares in inventive output weighted by average quality when we use the patenting rates of Moser (2010) for trying to adjust for the different patent propensity of the sectors. This adjustment



consists in dividing the number of patents in each sector for the patenting rate.<sup>21</sup> The results of table 10 seems to point to a pattern of technical change that is widespread and not localized in few sectors (although, it is interesting to note that, for all our three approaches to measurement, textiles, engines and chemicals account for more than 30% of inventive output). The adjustment for the average quality of patents does not seem to have a major effect the industrial concentration of inventive output and as such these results are broadly consistent with those obtained of Sullivan (1990) who has used patent counts for measuring inventive output. Interestingly enough, the adjustment for the propensity to patent has instead a much stronger effect on the shares of inventive output. In particular, when adjusted for patenting propensity, the share of the paper industry becomes much larger. In fact, the paper industry was an industry witnessing important technical changes, but characterized by a very low patent propensity (Moser, 2010). However, even after adjusting for the propensity to patent, inventive output remains fairly widespread across industries.

**Table 10 around here**

However, the highly skewed nature of the distribution of the quality of patents discussed in the previous section, suggests that, in order to shed light on the nature of technical change, is probably more revealing to consider the distribution across industries of the patents in the top percentiles of the quality scores. The underlying assumption is that is the restricted group of macroinventions situated in the tails of the quality distributions that are really critical for productivity growth. Table 11 shows the concentration of patents of different quality across industries over the period 1702-1841 measured using the Herfindahl index and concentration ratios.<sup>22</sup> Patents in the top percentiles of the quality scores (top 0.5%, top 1%) exhibit a remarkably higher degree of concentration than patents of lower quality (top 50% and the total patent sample). In table 11 we have also displayed the degree of industrial concentration for the set of important patents (defined as in figure 4 as the set of patents that have been mentioned simultaneously in at least two lists of “important patents”). The level of concentration for this set of patents is similar to that of the top 0.5% percentile. Overall, table 11 suggests that, although total patents were relatively widespread across industries as pointed out by Sullivan (1990),<sup>23</sup> technological blockbusters (patents of very high quality) were remarkably more localized. This result, in our view, provides an interesting hint for reconciling the Crafts-Harvey view with the patent evidence.

**Table 11 around here**

**7. CONCLUDING REMARKS**

In this paper we have proposed a new indicator (WRI\*) of the quality of English patents in the period 1617-1852 based on Woodcroft’s Reference Index. We have also explored the properties of

---

<sup>21</sup> For the sectors for which patenting rates were not available we have used the aggregate patenting rate of 0.12.

<sup>22</sup> The Herfindahl index was computed as  $H = \sum s_i^2$  where  $s_i$  is the share of patents of given quality in industry  $i$ . The higher the value of H the higher the degree of concentration: in this formulation, the index ranges from  $1/21$  ( $\cong 0.048$ ) when patents are evenly distributed across industries, to 1 when all patents are concentrated in one single industry. It is also instructive to consider the equivalent number ( $1/H$ ) that indicates the number of industries with equal size corresponding to the level H of concentration. The C3 concentration ratio is the sum of the shares of the three industries with the largest shares.

<sup>23</sup> The Herfindahl index for columns 4, 5 and 6 in table 10 are respectively equal to 0.07 (this, of course, is the same as column 6 in table 11), 0.07 and to 0.09.

this indicator and our preliminary results appear quite encouraging. We have established that the quality indicator is positively correlated with four different lists of “important patents” (patentees included in the DNB, in the two lists of “great inventors” recently compiled by Allen (2009) and in the list of significant patents constructed by Baker (1976)). One of the merits of the WRI\* indicator in comparison with the “great inventors” approach is that it provides a proxy for quality at the invention rather than at the inventor level. One further advantage (in comparison both to the great inventor lists and to Baker’s list of significant patents) is that WRI\* index can be calculated for all patents. Instead one of the obvious limitations of the adjusted WRI\* index in comparison with “great inventors” approach is that the former is restricted to patented inventions, whereas the latter can include also inventions that were not patented. We have also established that the distribution of WRI\*, both at aggregate level and at the level of individual industry, is right-skewed and similar to the empirical evidence found in contemporary studies of value of patents.

In a broader perspective, we think that the WRI\* indicator and, more generally, Woodcroft’s Reference Index have some very interesting potential for helping us to shed further light on some of the ongoing debates on the timing and scope of innovation during the industrial revolution. The WRI\* indicator presents the advantage of being of relatively easy computation and it seems capable to provide a reasonable proxy for the economic value of patents, which can fruitfully complement simple patent counts as indicator of innovation in this historical period. In particular, it has been frequently pointed out that the patent evidence lends support to a traditional view of the industrial revolution as a dramatic acceleration of technical change taking place in the second half of the eighteenth century and affecting simultaneously many sectors (Sullivan, 1989, 1990; Temin, 2000, p. 845). Our proposed indicator of patent quality seems instead to offer a way of reconciling the patent evidence with the “revisionist view” put forward by Crafts and Harley (1992). Concerning the timing of the industrial revolution, our findings seem in line with a traditional chronology and confirm that the second half of the eighteenth century (1762-1801) was the critical historical phase with a clustering of critical technical breakthroughs (top quality patents). However, it is important to take into account that the full impact of these macro “prototype” inventions on productivity growth became visible only after a phase of adaptation, improvement and refinement by means of streams of microinventions. Thus the time profile of high quality patents that we have reconstructed using the WRI\* indicator appears to be consistent with the dynamics of productivity growth estimated by Crafts and Harley (1992). In terms of the scope of the change, our findings indicate that, although total patents were relatively widespread, top-quality patents (ie, those covering technological blockbusters) were much more concentrated across industries. If we regard productivity growth as an outcome of the sustained improvement and extension (also to other industrial applications) of these macroinventions, our results indicate that the patent records evidence may indeed be consistent with a view of the industrial revolution as a process driven by a few revolutionary industrial innovations localized in a relatively circumscribed segment of the economy.

It is worth to conclude with an (obvious) word of caution. Our findings on the patterns of technical change during the industrial revolution are exclusively based on patented inventions. We should not forget however, that in this historical period a very significant amount of inventive activities was undertaken without the coverage of patent protection. Thus, the findings of this paper do not imply that the search for indicators of technical change based on historical sources that are alternative to the patent records is going to become less important. Real progress in our understanding of the historical process of technical change is likely to emerge only by tackling the

subject combining systematically different type of indicators and approaches to measurement both on patented and not patented inventions..

## APPENDIX

**Table A.1 around here**

**Table A.2 around here**

**Table A.3 around here**

## REFERENCES

- Agresti, A. (2002), *Categorical Data Analysis*, (New York: Wiley, 2<sup>nd</sup> ed.)
- Allen, R. C. (2009), *The British Industrial Revolution in Global Perspective* (Cambridge: Cambridge University Press).
- Allison, J. R., Lemley, M. A., Moore, K. A., and Trunkey, R. D. (2004), “Valuable Patents”, *Georgetown Law Journal*, 92, pp. 435-479.
- Anon. (1794), “Advertisement”, *Repertory of Arts and Manufactures*, 1, pp. i-iv.
- Anon. (1823), “Preface”, *Mechanic’s Magazine*, 1, pp. i-iv.
- Anon [Newton, W.] (1820), “Preface”, *London Journal of Arts and Sciences*, 1, pp. i-v.
- Anon. (1839), “Introductory Address”, *The Inventors’ Advocate and Patentee Recorder*, 1, pp. 1-2.
- Baker, R. (1976), *New and Improved...Inventors and Inventions that Have Changed the Modern World* (London: British Library)
- Bessen, J. (2008), “The Value of US Patents by Owner and Patent Characteristics”, *Research Policy*, 37, pp. 932-945.
- Bessen, J. (2009), “Estimates of Patent Rents from Firm Market Value”, *Research Policy*, 38, pp. 1604-1616.
- Crafts, N. F. R. (2004), “Productivity Growth in the Industrial Revolution: A New Growth Accounting Perspective”, *Journal of Economic History*, 64, pp. 521-535.
- Crafts, N. F. R. and Harley, C. K. (1992), “Output Growth and the British Industrial Revolution: a Restatement of the Crafts-Harley View”, *Economic History Review*, 45, pp. 703-730.
- Dutton, H.I. (1984), *The Patent System and Inventive Activity during the Industrial Revolution* (Manchester: Manchester University Press).
- Fligner, M. A. and Policello II, G. E. (1981), “Robust Rank Procedures for the Behrens-Fisher Problem”, *Journal of the American Statistical Association*, 73, pp. 162-168.
- Gomme, A. A. (1946), *Patents of Invention. Origins and Growth of the Patent System in Britain* (London: Longmans).
- Giuri, P. et al. (2007), “Inventors and Invention Processes in Europe. Results from the PatVal-EU Survey”, *Research Policy*, 36, pp. 1107-1127.
- Hall, B. H., Jaffe, A. B., Trajtenberg, M. (2002), “The NBER Patent-Citations Data File: Lessons, Insights, Methodological Tools” in Jaffe, A. B. and Trajtenberg, M. (2002), *Patents, Citations and Innovations*, (Cambridge (MA): MIT Press),
- Harhoff, D., Scherer, F. M. and Vopel, K. (2003), “Citations, Family Size, Opposition and the Value of Patents”, *Research Policy*, 32, pp. 1343-1363.
- Harrison, J. (2006), *Encouraging Innovation in the Eighteenth and Nineteenth Centuries, The Society of Arts and Patents, 1754-1904* (Gunnislake: High View)
- Harvey, W. S. and Downs-Rose, G. (1974), “Mr. Symington’s Improved Atmospheric Engine”, *Transactions of the Newcomen Society*, 48 (1973-4), pp. 27-32
- Hebert L. (1836), *The Engineer’s and Mechanic’s Encyclopaedia* (London: Kelly).
- Hewish, J. (1982), *The Indefatigable Mr. Woodcroft. The Legacy of Invention* (London: British Library).
- Hewish, J. (2000), *Rooms near Chancery Lane. The Patent Office under the Commissioners 1852-1883* (London: British Library).

- House of Lords (1851) [Select Committee of the House of Lords appointed to consider the Bills for the amendment of the Law touching Letters Patent for Invention], 'Reports and Minutes of the Evidence' (P.P. 1851, XVIII).
- Jaffe, A. and Trajtenberg, M. (2002), *Patents, Citations and Innovation. A Window on the Knowledge Economy* (Cambridge, MA: MIT Press).
- Jewkes, J., Sawers, D. and Stillerman R. (1969), *The Sources of Invention* (London: Macmillan, 2<sup>nd</sup> ed.)
- Khan, B. Z. and Sokoloff, K. L. (1993), "'Schemes of Practical Utility': Entrepreneurship and Innovation among 'Great Inventors' in the United States, 1790-1865", *Journal of Economic History*, 53, pp. 289-307.
- Khan, B. Z. and Sokoloff, K. L. (2008), "A Tale of Two Countries: Innovation and Incentives among Great Inventors in Britain and the United States, 1750-1930" in Farmer, R. (ed.), *Macroeconomics in the Small and the Large* (Cheltenham: Edward Elgar).
- Kleinknecht, A. (1987), *Innovation Patterns in Crisis and Prosperity: Schumpeter's Long Cycle Reconsidered* (London: MacMillan)
- Lampe, R. (2010), "Strategic Citation", Working Paper, Stanford University.
- MacLeod, C. (1988), *Inventing the Industrial Revolution. The English Patent System, 1660-1800* (Cambridge: Cambridge University Press).
- MacLeod, C. (2007), *Heroes of Invention. Technology, Liberalism and British Identity, 1750-1914* (Cambridge: Cambridge University Press).
- MacLeod, C., Tann, J., Andrew J. and Stein, J. (2003), 'Evaluating inventive activity: the cost of nineteenth century UK patents and the fallibility of renewal data', *Economic History Review*, 56, pp. 537-562.
- Mantoux, P. (1928), *The Industrial Revolution in the Eighteenth Century* (London: MacMillan).
- Mitchell, B. R and Deane, P. (1962), *Abstracts of British Historical Statistics* (Cambridge: Cambridge University Press).
- Mokyr, J. (1990), *The Lever of Riches* (Oxford: Oxford University Press).
- Mokyr, J. (1999), "Introduction: The New Economic History and the Industrial Revolution" in Mokyr, J. (ed.), *The British Industrial Revolution. An Economic Perspective* (Boulder: Westview, 2<sup>nd</sup> ed.)
- Mokyr, J. (2009), *The Enlightened Economy. An Economic History of Britain 1700-1850* (New Haven: Yale University Press).
- Moser, P. (2005), "How Do Patent Laws Influence Innovation ? Evidence from Nineteenth Century World Fairs", *American Economic Review*, 95, pp. 1213-1236.
- Moser, P. (2010), "Do Patents Weaken the Localization of Innovations ? Evidence from World Fairs, 1851-1915", Working Paper, Stanford University.
- Nuvolari, A. (2004), "Collective Invention during the British Industrial Revolution: the Case of the Cornish Pumping Engine", *Cambridge Journal Economics*, 28, pp. 347-363.
- O' Brien, P. K. (1997), "The Micro Foundations of Macro Invention: the Case of Reverend Edmund Cartwright", *Textile History*, 28, pp. 201-233.
- O'Brien, P. K., Griffiths, T. and P. Hunt (1995), "There is Nothing Outside the Text and There is No Safety in Numbers: A Reply to Sullivan", *Journal of Economic History*, 55, pp. 671-672.
- O' Brien, P. K., Griffiths, T. and P. Hunt (1996), "Technological Change during the First Industrial Revolution: the Paradigm Case of Textiles, 1688-1851" in R. Fox (ed.), *Technological Change* (Amsterdam: Harwood).
- Ravn, M. O. and Uhlig, H. (2002), "On Adjusting the Hodrick-Prescott Filter for the Frequency of Observations", *Review of Economics and Statistics*, 84, pp. 371-380.
- Sampat, B. N. and Ziedonis, A. A. (2004), "Patent Citations and the Economic Value of Patents" in Moed, H. F. et al. (eds.), *Handbook of Quantitative Science and Technology Research* (Dordrecht:Kluwer).
- Schankerman, M. and Pakes, A. (1986), "Estimates of the Value of Patents in European Countries during Post-1950 Period", *Economic Journal*, 97, pp. 1-25.
- Silverberg, G. and Verspagen, B. (2003), "Breaking the Waves: a Poisson Regression Approach to Schumpeterian Clustering of Basic Innovations", *Cambridge Journal of Economics*, 27, pp. 671-693.

- Silverberg, G. and Verspagen, B. (2007), "The Size Distribution of Inventions Revisited: An Application of Extreme Value Statistics to Citation and Value Measure of Patent Significance", *Journal of Econometrics*, 139, pp. 318-339.
- Sullivan, R. J. (1989), "England's 'Age of Invention': the Acceleration of Patents and of Patentable Invention during the Industrial Revolution", *Explorations in Economic History*, 26, pp. 424-452
- Sullivan, R. J. (1990), "The Revolution of Ideas: Widespread Patenting and Invention during the English Industrial Revolution", *Journal of Economic History*, 50, pp. 349-362.
- Sullivan, R. J. (1994), "Estimates of the Value of Patent Rights in Great Britain and Ireland, 1852-1876", *Economica*, 61, pp. 37-58.
- Sullivan, R. J. (1995), "Patent Counts and Textile Invention: a comment on Griffiths, Hunt and O'Brien", *Journal of Economic History*, 55, pp. 666-670.
- Temin, P. (2000), "A Response to Harley and Crafts", *Journal of Economic History*, 60, pp. 842-846.
- Trajtenberg, M. (1990), "A Penny for your Quotes: Patent Citations and the Value of Innovations", *Rand Journal of Economics*, 21, pp. 172-187.
- Van Zeebroeck, N. (2009), "The Puzzle of Patent Value Indicators", Solvay Business School Working Paper.
- Von Tunzelmann, G. N. (1995), *Technology and Industrial Progress* (Aldershot: Edward Elgar).
- Woodcroft, B. (1854), *Titles of Patents of Invention Chronologically Arranged, 1617-1852* (London)
- Woodcroft, B. (1862), *Reference Index of English Patents of Invention, 1617-1852* (London)
- Wrigley, E. A. (1985), "Urban growth and agricultural change: England and the continent in the early modern period", *Journal of Interdisciplinary History*, 15, pp. 683-728.

**Table 1: Entry in Woodcroft's Reference Index for James Watt's patent of the separate condenser**

<b>Patent Number</b>	<b>Reference</b>
<b>913</b>	Repertory of Arts, vol I, p. 217
	Mechanics Magazine, vol I, p. 4
	Practical Mechanics' Journal, vol I, p. 285
	Register of Arts and Sciences, vol IV, p. 4, etc.
	Engineers' and Mechanics' Encyclopaedia, vol 2, p. 725
	Webster's Reports, vol I, p. 31, etc.
	Webster's Patent Law, p. 46, etc.
	Webster's Letter Patent, p. 6, etc.
	Blackstone's Reports, vol II, 463
	Carpmael's Report on Patent Cases, vol I, p. 117, etc.
	Davies on Patents, p. 155, etc.
	Collier's Law on Patents, p. 71, etc.
	Parliamentary Report, 1829, p. 187, etc.
	Vesey, junr.' S Reports, vol III, p. 140
	Holroyd on Patents, p. 35, etc.
	Durnford and East Term Reports, vol VIII, p. 95
	Patentee's Manual, p.8
Billing on Patents, p. 20, etc.	
Rolls Chapel Reports, 6 <sup>th</sup> Report, p. 160	
Extended by Act of Parliament for 25 years	
	<b>Rolls Chapel</b>

**Table 2: Entry in Woodcroft's Reference Index for William Symington's patent of an improved Newcomen engine design**

<b>Patent Number</b>	<b>Reference</b>
<b>2544</b>	Mechanics' Magazine, vol XVII, p. 385, etc.
	Rolls Chapel Reports, 6 <sup>th</sup> Report, p. 151
	<b>Rolls Chapel</b>

**Table 3: Publications with most references in Woodcroft's Reference Index**

<b>Publication s</b>	<b>1 -2000</b> <b>[1617-1794]</b>	<b>2001 – 4000</b> <b>[1794-1816]</b>	<b>4001- 6000</b> <b>[1816-1830]</b>	<b>6001 – 8000</b> <b>[1830-1839]</b>	<b>8001 – 9210</b> <b>[1839-1841]</b>	<b>Total</b>
London Journal of Arts and Sciences (Newton's; London, 1820)	0	2	1330	1290	463	3085
Repertory of Arts and Manufactures (5th series, London, 1794)	169	931	1124	833	335	3392
Rolls Chapel Reports, 6th, 7th and 8 <sup>th</sup>	738	968	360	245	0	2311
Mechanic's Magazine (London, 1823)	32	22	194	249	641	1138
Inventors' Advocate and Patentees' Recorder (London, 1839)	0	0	0	38	901	939
Register of Arts and Sciences (2nd series, London, 1824)	23	35	602	212	1	873
Engineers' and Mechanics' Encyclopaedia (by Luke Hebert, London, 1836)	30	44	315	102	0	491
Carpmael's Patent Cases (Reports)	25	36	44	25	1	131
Webster's (Reports)	22	20	44	41	5	132
Webster's Patent Law (a Treatise)	22	28	32	23	1	106
Billing on Patents (a Treatise)	13	18	36	28	5	100
Engineers' and Architects' Journal (London, 1837)	1	2	6	45	100	154
Law Journal (Reports)	0	2	13	27	18	60
Parliamentary, 1829 Patent Law (Reports)	15	26	17	0	0	58
Artizan. A Monthly Journal of Operative Arts (London, 1843)	2	4	7	17	17	47
Patentees Manual (by Henry Johnson, London, 1853)	6	10	12	7	2	37
Ure's Cotton Manufacture (London, 1836)	6	6	23	10	0	45
Websters Letters Patent (London, 1848)	6	9	14	5	0	34
Patent Journal and Inventor's Magazine (London, 1846)	0	0	5	24	12	41
Holroyd's on Patents (a Treatise)	12	15	4	0	0	31
Jurist (Reports)	0	1	4	15	11	31
Law Times (Reports)	0	2	3	12	12	29
Davies on Patents (Reports)	16	9	0	0	0	25
Practical Mechanics' Journal (Glasgow, 1848)	2	0	2	8	14	26
Stuart's History of the Steam Engine (London, 1825)	7	7	4	0	0	18
Moore's Privy Council Cases (Reports)	0	0	4	9	3	16
Transactions of the Society of Arts	0	0	0	5	10	15
Meeson and Welsby's (Reports)	0	1	5	5	2	13

---

Ure's Philosophy of Manufactures (London, 1835)	0	0	4	7	0	11
---	---	---	---	---	---	----

---



**Table 4: Spearman Rank Correlation Matrix of different fixed-effects adjustments**

	Woodcroft (raw)	Adjusted Woodcroft (yearly mean)	Adjusted Woodcroft (mean subperiods)	Adjusted Woodcroft (HP filter)	Adjusted Woodcroft (Goldsmith Kress Library)
Woodcroft (raw)	1				
Adjusted Woodcroft (yearly mean)	0.8256	1			
Adjusted Woodcroft (mean subperiods)	0.8748	0.9384	1		
Adjusted Woodcroft (HP filter)	0.8722	0.9717	0.9782	1	
Adjusted Woodcroft (Goldsmith Kress Library)	0.8266	0.8285	0.8966	0.8803	1

All coefficients significant at 1%

**Table 5: Overlap between DNB, Allen and Baker patents**

	DNB	Allen “great inventor”	Allen “macro inventor”	Baker
DNB	723	104	26	55
Allen “great inventor”		133	27	32
Allen “macro inventor”			27	12
Baker				137

**Table 6: Fligner-Policello tests of stochastic equality**

	DNB	Baker	Allen “Great Inventor”	Allen “Macro Inventor”
Entire sample 1617-1841				
Fligner-Policello statistic	8.416***	6.892***	7.573***	9.141***
Year>1741				
Fligner-Policello statistic	7.787***	6.877***	10.542***	12.469***
Year>1781				
Fligner-Policello statistic	6.549***	5.858***	10.054***	9.408***
(removing patent cases)				
Fligner-Policello statistic	7.906***	5.307***	6.842***	7.941***

\*, \*\*, \*\*\* indicate significance levels of (10%, 5%, 1%)

**Table 7: Odds-Ratios of “important patents” of being in high WRI\* percentiles**

	Treatment			
	DNB	Baker	Allen “Great Inventor”	Allen “Macro Inventor”
Entire sample 1617-1841				
Outcomes			Odds-Ratios	
WRI* (top 50%)	1.625***	2.909***	3.964***	22.846***
WRI* (top 10%)	2.336***	4.220***	3.894***	5.684***
WRI* (top 1%)	4.641***	12.248***	13.933**	24.326***
Year>1741				
Outcomes			Odds-Ratios	
WRI* (top 50%)	1.525***	2.774***	6.334***	22.729***
WRI* (top 10%)	2.240***	3.986***	4.164***	11.163***
WRI* (top 1%)	5.076***	12.098***	13.420***	33.647***
Year>1781				
Outcomes			Odds-Ratios	
WRI* (top 50%)	1.543***	2.809***	9.253***	28.547***
WRI* (top 10%)	1.979***	3.831***	4.283***	9.172***
WRI*(top 1%)	3.697***	13.919***	9.269***	27.181***
(removing patent cases)				
Outcomes			Odds-Ratios	
WRI*(top 50%)	1.543***	2.528***	3.853***	20.317***
WRI* (top 10%)	2.183***	3.373***	3.908***	9.976***
WRI* (top 1%)	14.712***	64.496***	62.281***	40.523***

\*, \*\*, \*\*\* indicate significance levels of 10%, 5%, 1% (chi-squared test for Odds-Ratios different from 1)

**Table 8: Determinants of Woodcroft Reference Index (1617-1841)**

	(1)	(2)	(3)	(4)	(5)	(6)
DNB inventor	0.352*** (0.0460)					0.356*** (0.0461)
Number of inventors	0.00366 (0.0290)	0.00525 (0.0291)	0.0143 (0.0289)	0.00589 (0.0287)	0.00682 (0.0291)	0.00275 (0.0291)
Previous patents	-0.0243 (0.0218)	-0.00775 (0.0210)	0.00182 (0.0208)	0.00867 (0.0208)	0.0132 (0.0212)	-0.0224 (0.0218)
Engineer	0.0184 (0.0264)	0.0273 (0.0268)	0.0456* (0.0264)	0.0381 (0.0262)	0.0481* (0.0265)	0.0244 (0.0262)
Foreign Communication	-0.0438 (0.0370)	-0.0630* (0.0371)	-0.0645* (0.0371)	-0.0673* (0.0365)	-0.0625* (0.0371)	-0.0497 (0.0372)
Metropolitan	-0.0201 (0.0208)	-0.0152 (0.0207)	-0.0132 (0.0208)	-0.0222 (0.0206)	-0.0194 (0.0209)	-0.0216 (0.0211)
Allen "Great Inventor"		1.015*** (0.120)				
Allen "Macro Inventor"			1.667*** (0.255)			
Baker patent				0.894*** (0.107)		
Insider						-0.0391* (0.0211)
Constant	0.492*** (0.0508)	0.499*** (0.0503)	0.469*** (0.0501)	0.488*** (0.0505)	0.491*** (0.0510)	0.617*** (0.0389)
Time dummies	Yes	Yes	Yes	Yes	Yes	Yes
Industry dummies	Yes	Yes	Yes	Yes	Yes	No
Observations	9199	9199	9199	9199	9199	9210
Log-Likelihood	-13852	-13819	-13839	-13816	-13910	-13900
Pseudo R <sup>2</sup>	0.0836	0.0858	0.0844	0.0860	0.0798	0.0814

Note: negative binomial regressions (dependent variable is WRI), robust standard errors in parenthesis;  
\*, \*\*, \*\*\* indicate significance levels of (10%, 5%, 1%)

**Table 9: Descriptive statistics for WRI\* (1617-1841)**

Industry	Number	Mean	Standard deviation	Median	Skewness	Kurtosis	Min	Max	Number of 0s
Agriculture	287	0.829	0.720	0.798	0.773	4.178	0	3.989	88
Carriages, vehicles, railways	513	1.064	1.424	1.091	11.291	192.174	0	26.214	97
Chemical and allied industries	753	1.113	1.256	1.091	5.286	46.051	0	15.701	148
Clothing	196	0.893	1.126	0.786	3.824	25.714	0	8.738	65
Construction	400	1.127	1.614	1.091	7.494	83.257	0	22.154	83
Engines (steam engines, water wheels)	1177	1.092	2.287	1.091	17.893	428.160	0	61.167	282
Food and Drink	529	0.949	1.116	0.798	4.383	36.000	0	12.502	156
Furniture	473	0.848	0.911	0.786	4.103	35.272	0	10.467	120
Glass	89	1.157	2.206	0.798	5.498	37.584	0	17.476	27
Hardware (edge tools, locks, grates)	628	0.961	1.111	0.940	6.641	85.237	0	17.476	147
Instruments (Scientific Instruments, Watches, Measuring devices)	410	0.889	0.779	1.082	2.016	14.020	0	6.547	106
Leather	158	1.050	0.809	1.137	1.169	6.697	0	5.063	33
Manufacturing machinery (other)	457	0.901	1.012	0.798	3.824	28.534	0	10.229	128
Medicines (drugs, surgical and dental instruments, other medical devices)	244	0.804	0.927	0.786	4.035	29.221	0	7.851	73
Metal manufacturing	466	1.112	2.636	0.798	16.142	310.156	0	52.429	115
Military equipment and weapons	216	0.979	1.471	0.786	7.372	77.248	0	17.476	46
Mining	62	1.052	1.044	1.114	1.509	6.601	0	5.111	20
Paper, printing and publishing	337	1.107	1.407	1.091	6.510	59.536	0	14.775	52
Pottery, Bricks, Artificial Stone	169	1.044	1.199	1.091	3.474	20.518	0	8.738	45
Shipbuilding	481	0.953	1.081	0.786	3.504	21.272	0	8.738	119
Textiles	1154	0.972	1.653	0.633	7.615	89.369	0	27.692	288
<b>Total sample</b>	9210	1	1.530	0.798	15.239	450.939	0	61.167	2245

**Table 10: Inventive Output measured using patents and WRI\*, 1702-1841**

	Patents	Mean (WRI*)	Patenting rates (Moser, 2010)	Shares in inventive output (patents)	Shares in inventive output (patents x WRI*)	Shares in inventive output (patents/patenting rates) x WRI*
Agriculture	272	0.875	0.228	0.031	0.027	0.010
Carriages, vehicles, railways	500	1.039	0.12	0.057	0.059	0.043
Chemical and allied industries	723	1.111	0.063	0.082	0.091	0.125
Clothing	185	0.851	0.103	0.021	0.018	0.015
Construction	383	1.155	0.141	0.043	0.050	0.031
Engines (steam engines, water wheels)	1133	1.050	0.261	0.128	0.135	0.045
Food and Drink	492	0.985	0.054	0.056	0.055	0.088
Furniture	466	0.861	0.061	0.053	0.045	0.065
Glass	76	1.010	0.104	0.009	0.009	0.007
Hardware (edge tools, locks, grates)	610	0.961	0.151	0.069	0.066	0.038
Instruments (Scientific Instruments, Watches, Measuring devices)	406	0.898	0.088	0.046	0.041	0.041
Leather	152	1.091	0.093	0.017	0.019	0.018
Manufacturing machinery (other)	445	0.925	0.296	0.050	0.047	0.014
Medicines (drugs, surgical and dental instruments, other medical devices)	240	0.818	(-)	0.027	0.022	0.016
Metal manufacturing	430	1.063	(-)	0.049	0.052	0.037
Military equipment and weapons	208	0.932	0.135	0.024	0.022	0.014
Mining	54	1.207	0.038	0.006	0.007	0.017
Paper, printing and publishing	324	1.151	0.023	0.037	0.042	0.160
Pottery, Bricks, Artificial Stone	159	1.055	(-)	0.018	0.019	0.014
Shipbuilding	444	1.013	(-)	0.050	0.051	0.037
Textiles	1132	0.968	0.065	0.128	0.124	0.166
Total sample	8834	1	0.12	1	1	1

Note: For calculating the shares of column (4), inventive output is computed as number of patents. For calculating the shares of column (5), inventive output is computed as column (1) x column (2). For calculating the shares of column (6), inventive output is computed as [column(1)/column(3)] x column (2)

**Table 11: Industrial concentration of patents of different quality (Herfindahl indexes), 1702-1841**

	Top 0.5%	Top 1%	Top 5%	Top 10%	Top 50%	Total Patents	Important patents
Herfindahl (H)	0.12	0.10	0.07	0.08	0.07	0.07	0.12
Equivalent number (1/H)	8.07	9.86	13.40	13.27	14.42	14.37	8.68
C3	0.51	0.42	0.37	0.37	0.34	0.34	0.51

**Table A.1: Determinants of Woodcroft Reference Index (1742-1841)**

	(1)	(2)	(3)	(4)	(5)	(6)
DNB Inventor	0.329*** (0.0453)					0.333*** (0.0453)
Number of inventors	0.0144 (0.0292)	0.0163 (0.0293)	0.0244 (0.0291)	0.0165 (0.0288)	0.0176 (0.0292)	0.0134 (0.0292)
Previous patents	-0.0245 (0.0217)	-0.00914 (0.0210)	-0.00001 (0.0209)	0.00653 (0.0208)	0.0104 (0.0211)	-0.0228 (0.0218)
Engineer	0.0221 (0.0264)	0.0298 (0.0268)	0.0472* (0.0264)	0.0402 (0.0262)	0.0496* (0.0265)	0.0265 (0.0262)
Foreign communication	-0.0444 (0.0370)	-0.0621* (0.0371)	-0.0636* (0.0371)	-0.0663* (0.0365)	-0.0618* (0.0371)	-0.0502 (0.0372)
Metropolitan	-0.0206 (0.0208)	-0.0164 (0.0208)	-0.0142 (0.0208)	-0.0226 (0.0206)	-0.0199 (0.0210)	-0.0217 (0.0211)
Allen "Great Inventor"		0.969*** (0.120)				
Allen "Macro Inventor"			1.590*** (0.255)			
Baker				0.839*** (0.107)		
Insider						-0.0386* (0.0211)
Constant	0.475*** (0.0509)	0.482*** (0.0505)	0.453*** (0.0501)	0.472*** (0.0506)	0.473*** (0.0511)	0.606*** (0.0390)
Time dummies	Yes	Yes	Yes	Yes	Yes	Yes
Industry dummies	Yes	Yes	Yes	Yes	Yes	No
Observations	8623	8623	8623	8623	8623	8629
Log-Likelihood	-13549	-13520	-13538	-13519	-13599	-13598
Pseudo R <sup>2</sup>	0.0547	0.0567	0.0555	0.0568	0.0511	0.0519

Note: negative binomial regressions (dependent variable is WRI), robust standard errors in parenthesis; \*, \*\*, \*\*\* indicate significance levels of (10%, 5%, 1%)

**Table A.2: Determinants of Woodcroft Reference Index (1782-1841)**

	(1)	(2)	(3)	(4)	(5)	(6)
DNB Inventor	0.258*** (0.0417)					0.265*** (0.0420)
Number of inventors	0.0207 (0.0281)	0.0238 (0.0282)	0.0258 (0.0282)	0.0217 (0.0277)	0.0230 (0.0283)	0.0164 (0.0283)
Previous patents	-0.0209 (0.0218)	-0.00645 (0.0210)	0.000184 (0.0209)	0.00298 (0.0207)	0.00636 (0.0211)	-0.0181 (0.0219)
Engineer	0.0322 (0.0262)	0.0368 (0.0267)	0.0522** (0.0265)	0.0449* (0.0262)	0.0529** (0.0265)	0.0303 (0.0262)
Foreign communication	-0.0510 (0.0370)	-0.0646* (0.0371)	-0.0655* (0.0371)	-0.0678* (0.0365)	-0.0648* (0.0371)	-0.0560 (0.0372)
Metropolitan	-0.0127 (0.0211)	-0.00954 (0.0211)	-0.00974 (0.0212)	-0.0164 (0.0208)	-0.0115 (0.0212)	-0.0118 (0.0212)
Allen “Great Inventor”		0.806*** (0.107)				
Allen “Macro Inventor			1.228*** (0.224)			
Baker				0.767*** (0.104)		
Insider						-0.0336 (0.0212)
Constant	0.442*** (0.0501)	0.447*** (0.0500)	0.431*** (0.0499)	0.443*** (0.0498)	0.440*** (0.0503)	0.598*** (0.0382)
Time dummies	Yes	Yes	Yes	Yes	Yes	Yes
Industry dummies	Yes	Yes	Yes	Yes	Yes	No
Observations	7896	7896	7896	7896	7896	7901
Log-Likelihood	-12658	-12647	-12665	-12628	-12688	-12711
Pseudo R <sup>2</sup>	0.0465	0.0472	0.0459	0.0487	0.0442	0.0430

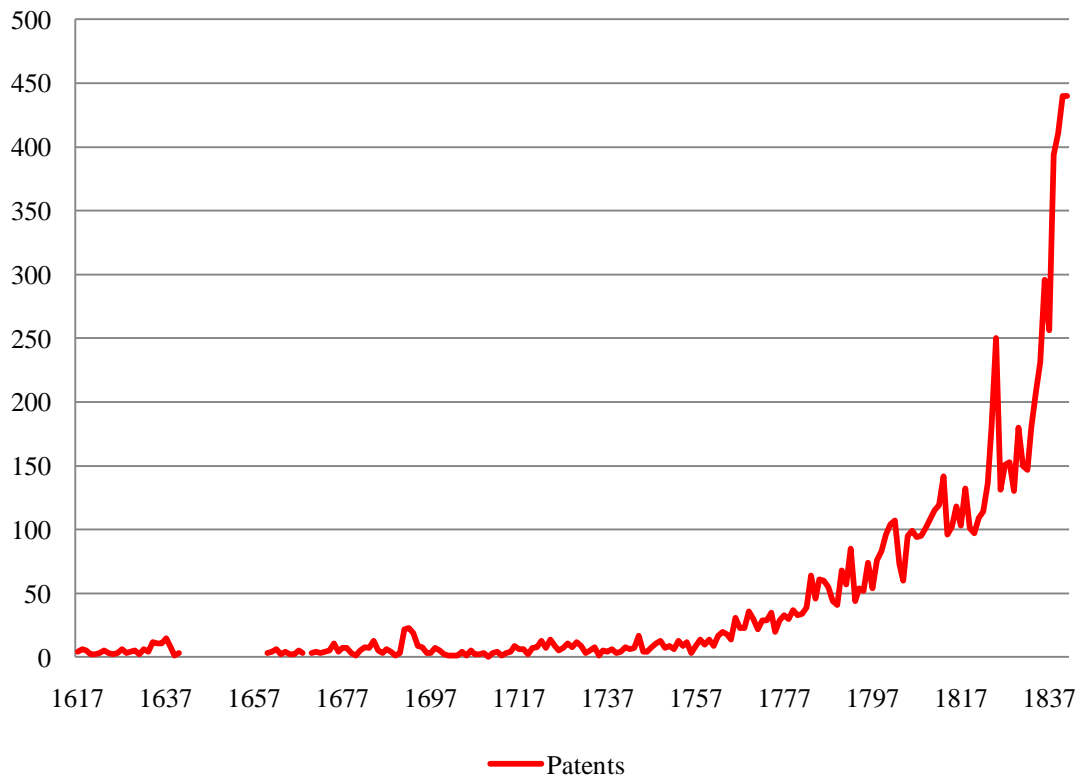
Note: negative binomial regressions (dependent variable is WRI), robust standard errors in parenthesis; \*, \*\*, \*\*\* indicate significance levels of (10%, 5%, 1%)

**Table A.3: Determinants of Woodcroft Reference Index (removing patent cases)**

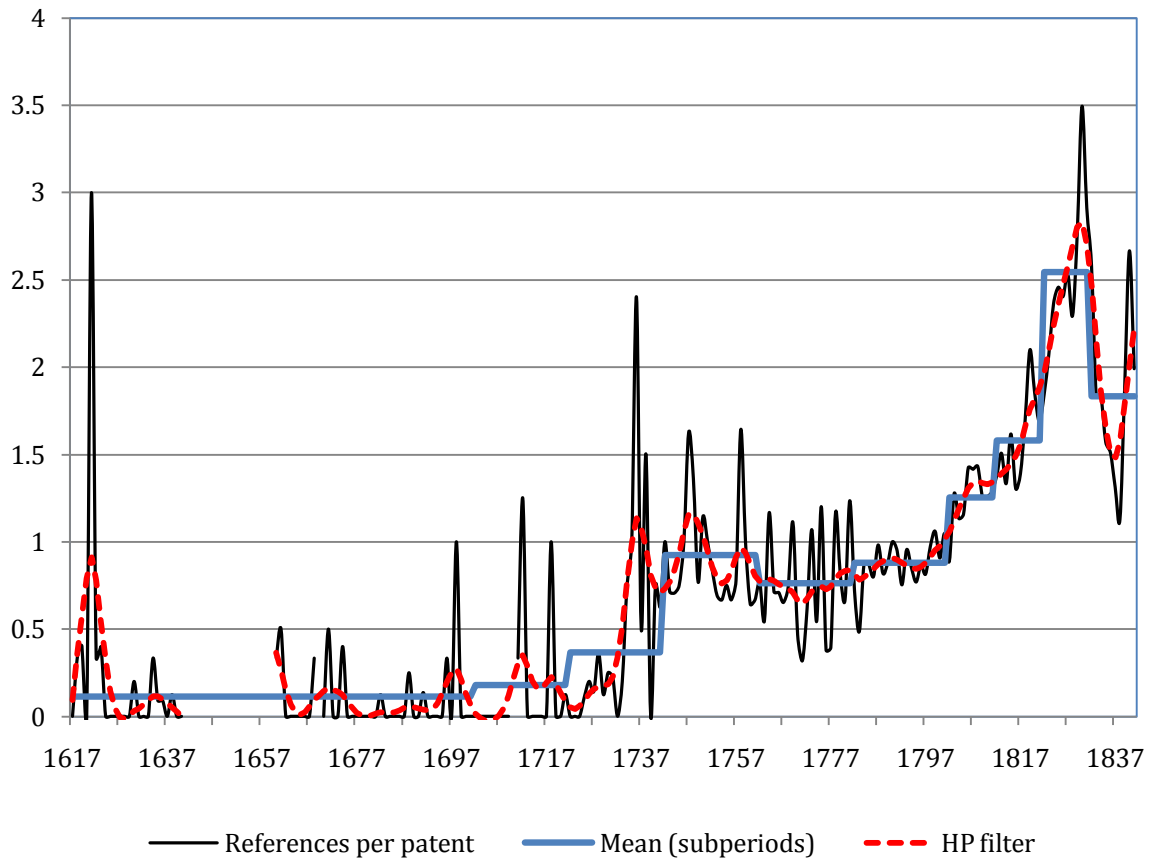
	(1)	(2)	(3)	(4)	(5)	(6)
DNB Inventor	0.203*** (0.0308)					0.212*** (0.0311)
Numer of inventors	0.00950 (0.0211)	0.00813 (0.0211)	0.0146 (0.0209)	0.0115 (0.0210)	0.0114 (0.0210)	-0.000359 (0.0217)
Metropolitan	-0.0269* (0.0157)	-0.0261* (0.0156)	-0.0262* (0.0157)	-0.0296* (0.0157)	-0.0278* (0.0157)	-0.0268* (0.0157)
Previous patents	-0.0237 (0.0165)	-0.0159 (0.0160)	-0.00625 (0.0160)	-0.00404 (0.0160)	-0.00142 (0.0161)	-0.0221 (0.0166)
Engineer	0.0624*** (0.0210)	0.0635*** (0.0210)	0.0758*** (0.0209)	0.0729*** (0.0210)	0.0785*** (0.0211)	0.0787*** (0.0214)
Allen "Great Inventor"		0.759*** (0.0843)				
Allen "Macro Inventor"			1.180*** (0.181)			
Baker patent				0.526*** (0.0839)		
Insider						-0.0382** (0.0158)
Constant	0.275*** (0.0386)	0.284*** (0.0385)	0.265*** (0.0385)	0.271*** (0.0385)	0.272*** (0.0386)	0.495*** (0.0299)
Time dummies	Yes	Yes	Yes	Yes	Yes	Yes
Industry dummies	Yes	Yes	Yes	Yes	Yes	No
Observations	8937	8937	8937	8937	8937	8948
Log-likelihood	-11947	-11919	-11942	-11942	-11966	-12019
Pseudo R <sup>2</sup>	0.107	0.109	0.108	0.108	0.106	0.103

Note: negative binomial regressions (dependent variable is WRI), robust standard errors in parenthesis; \*, \*\*, \*\*\* indicate significance levels of (10%, 5%, 1%)



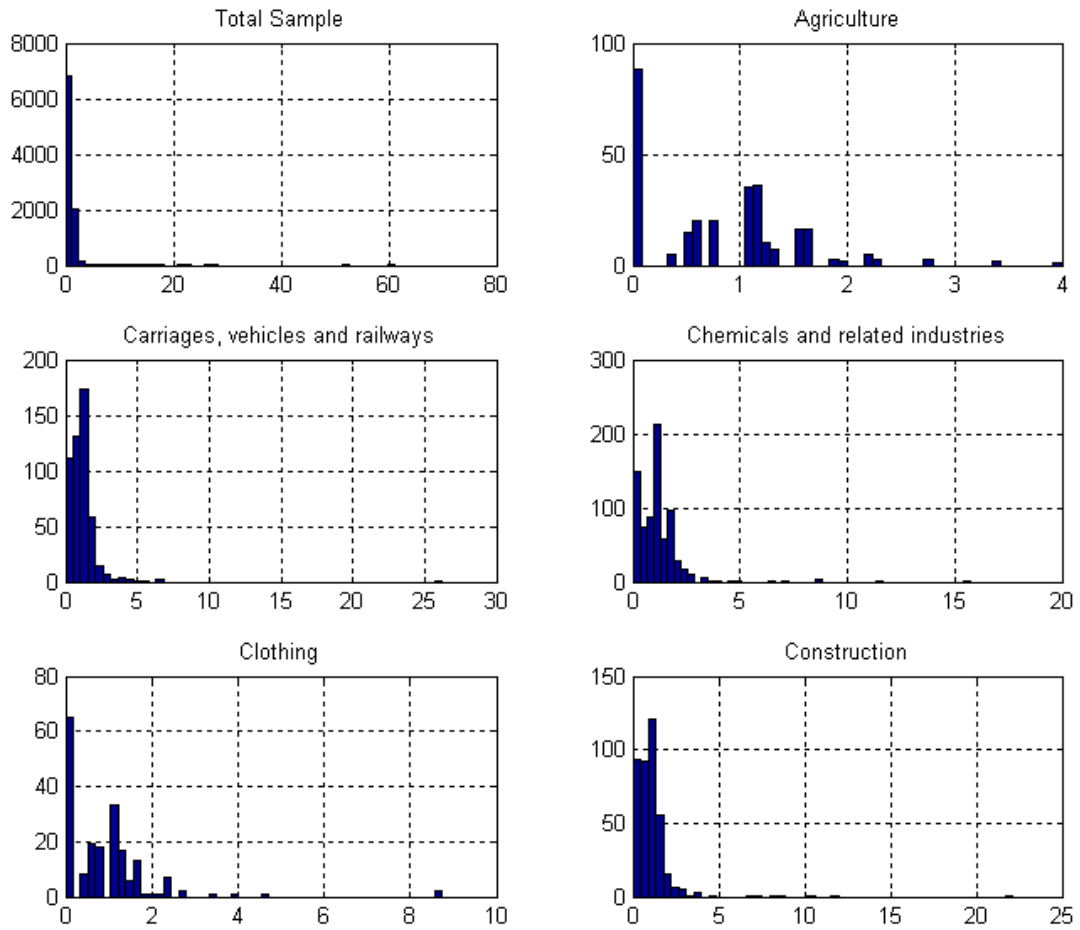


**Figure 1: Number of English patents granted per year.**

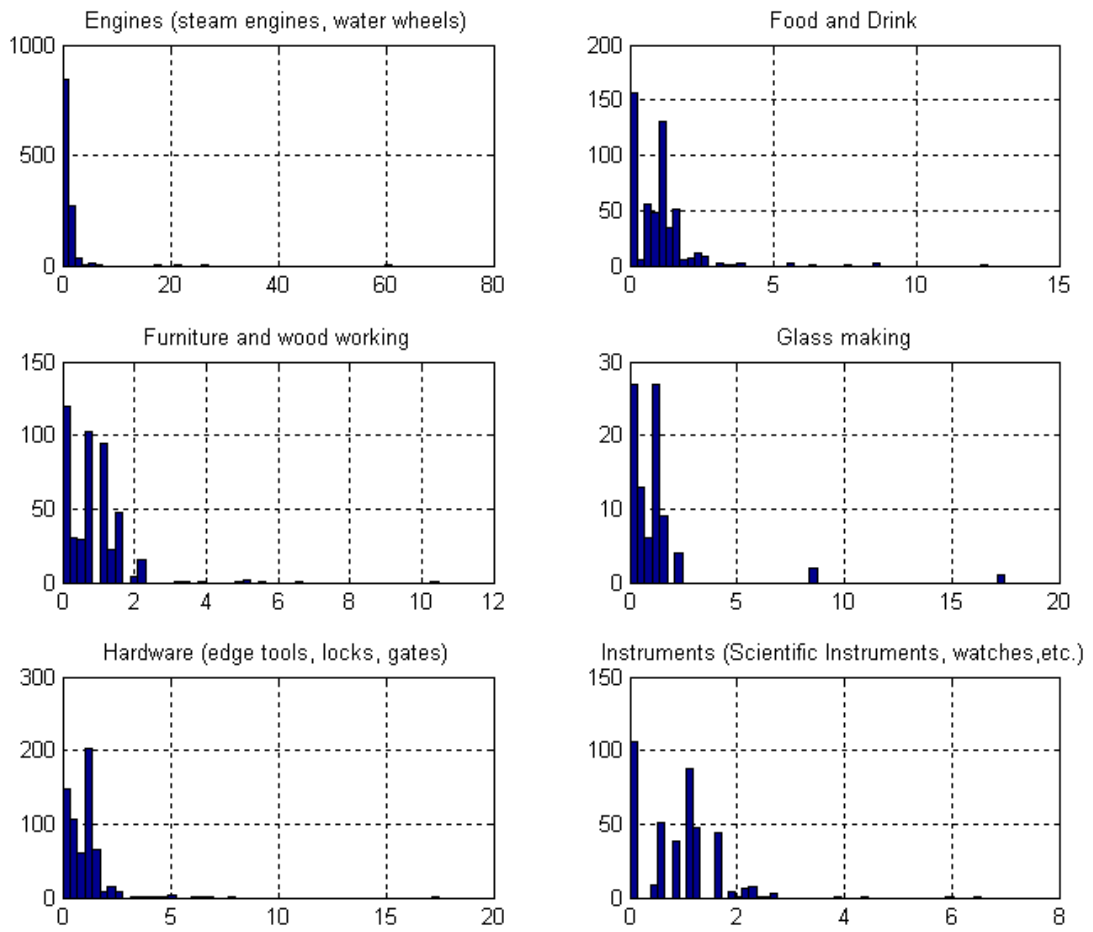


**Figure 2: Average number of references per patent (yearly and subperiods)**

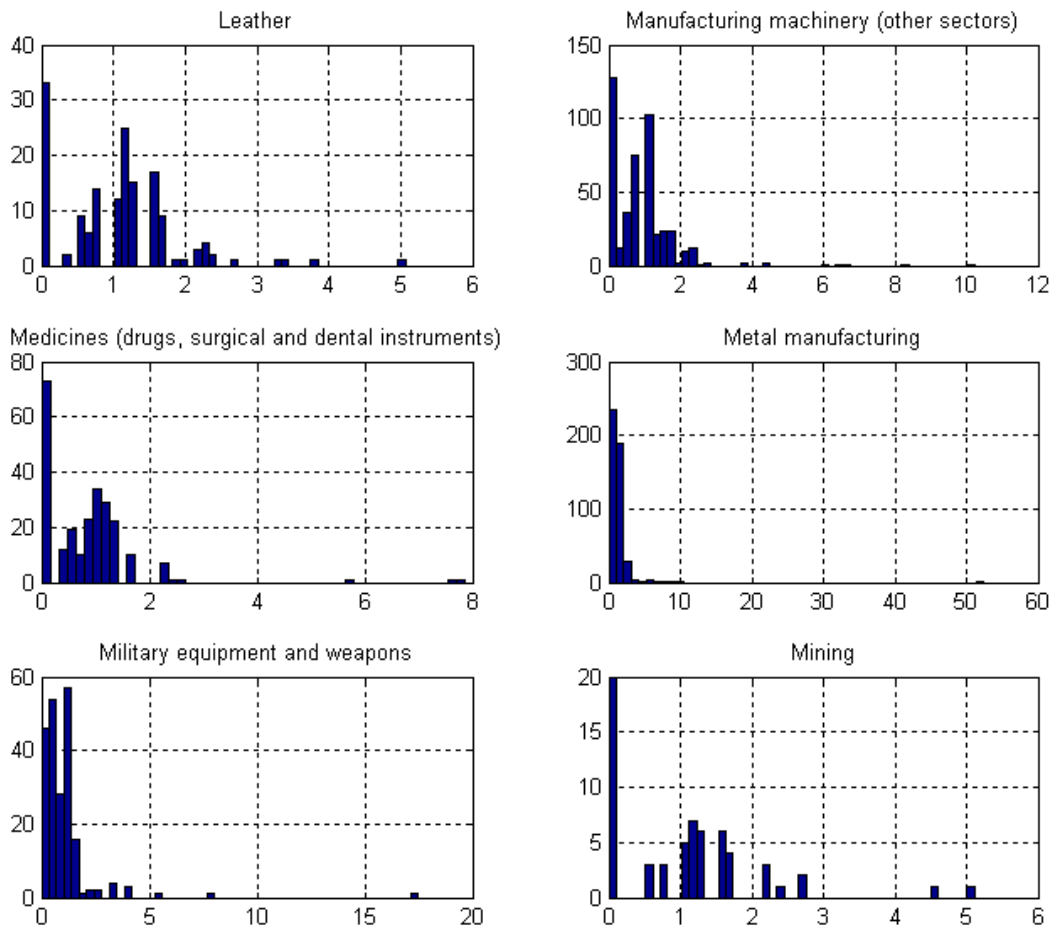
**Figure 3: Distribution of WRI\* across industries**



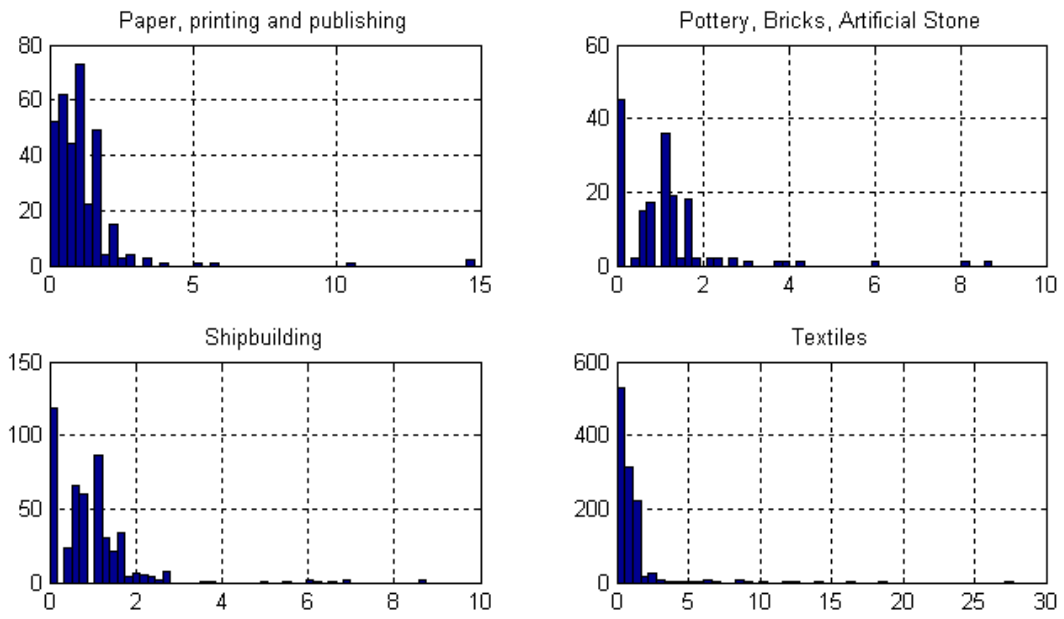
**Figure 3: Distribution of WRI\* across industries (continued)**

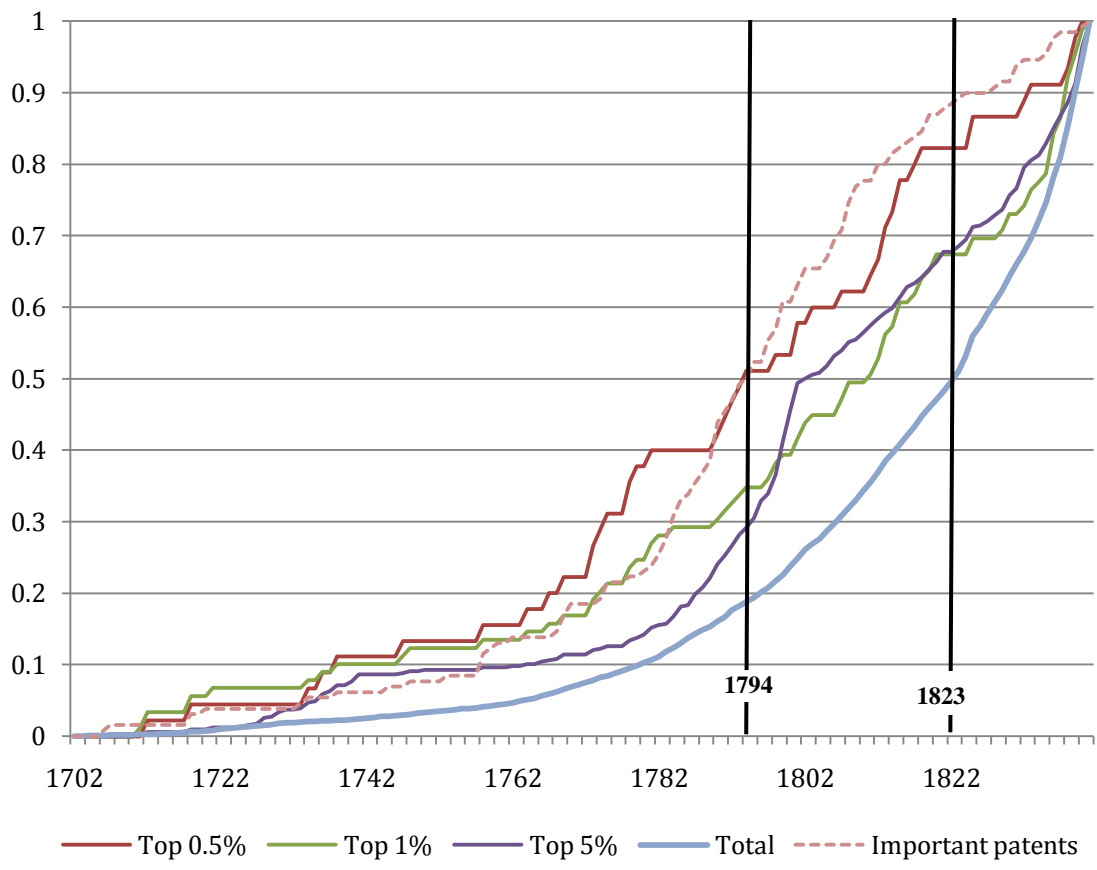


**Figure 3: Distribution of WRI\* across industries (continued)**



**Figure 3: Distribution of WRI\* across industries (continued)**





**Figure 4: Cumulative distribution of patents of different quality, 1702-1841**