



United States Department of Agriculture
National Agricultural Statistics Service



**ACREAGE
GRAIN STOCKS
RICE STOCKS**

Executive Summary

JUNE 29, 2012

8:30 AM



Contents



Field Crops	Stocks
Planted Acres	Corn
Harvested Acres	Soybeans
	Wheat
	Rice



Survey Overview

	June Ag Survey	June Area Survey
Survey Type	Farmer Reported	Farmer Reported
Collection Method	Mail, Phone, Internet, Personal Interview	Personal Interview
Crops Included	Field Crops	Field Crops
States	All except AK and HI	All except AK and HI
Sample Size	~70,500 farms	~11,000 segments
Collection Period	May 30 – June 18	May 30 – June 15



U.S. Principal Crop Acres

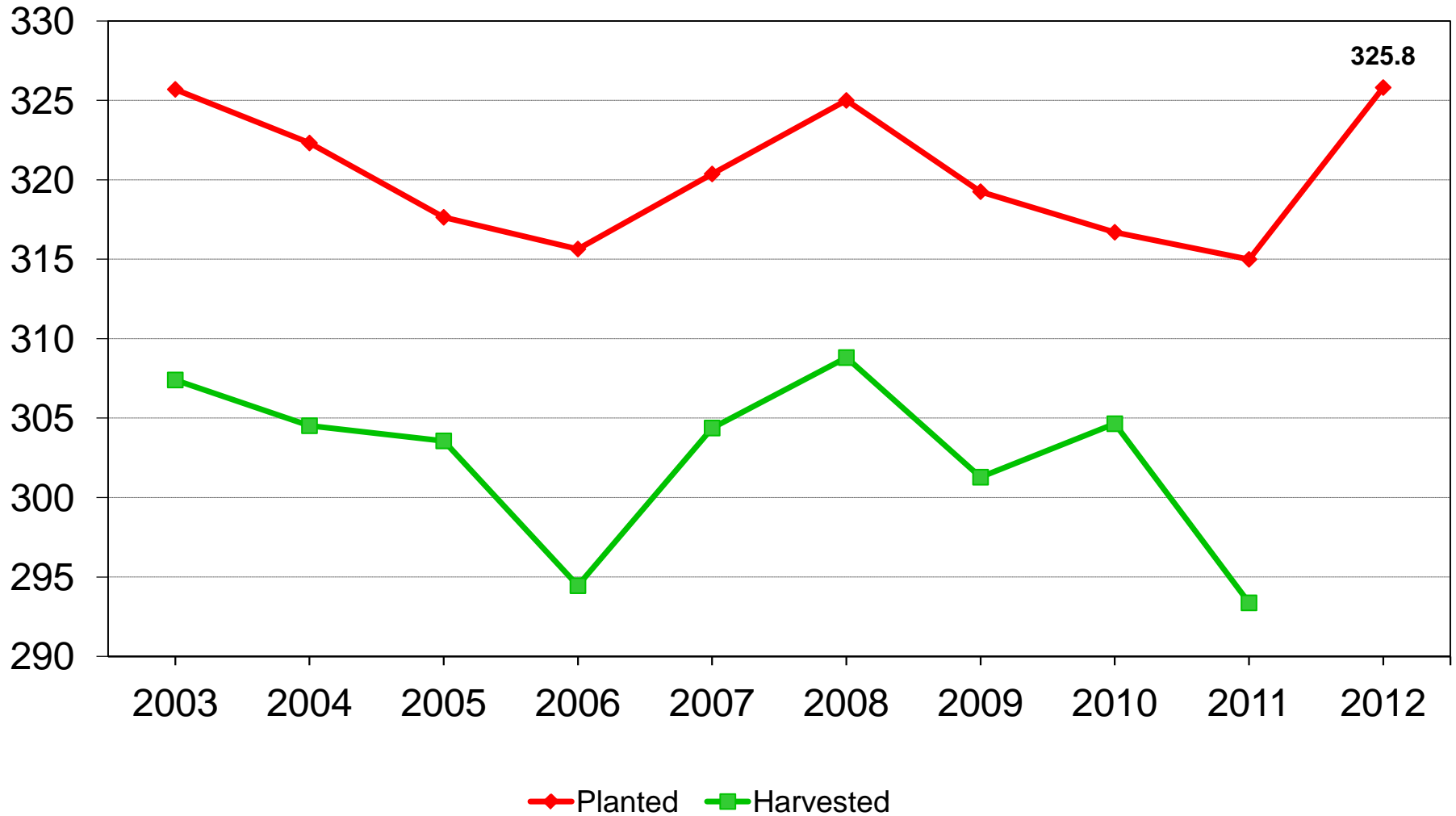
Year	Planted Area	Change from Previous Year
<i>---Million acres---</i>		
2003	325.7	- 1.6
2004	322.3	- 3.4
2005	317.6	- 4.7
2006	315.6	- 2.0
2007	320.4	+ 4.7
2008	325.0	+ 4.6
2009	319.3	- 5.7
2010	316.7	- 2.6
2011	315.0	- 1.7
2012	325.8	+ 10.8



U.S. Principal Crop Acres

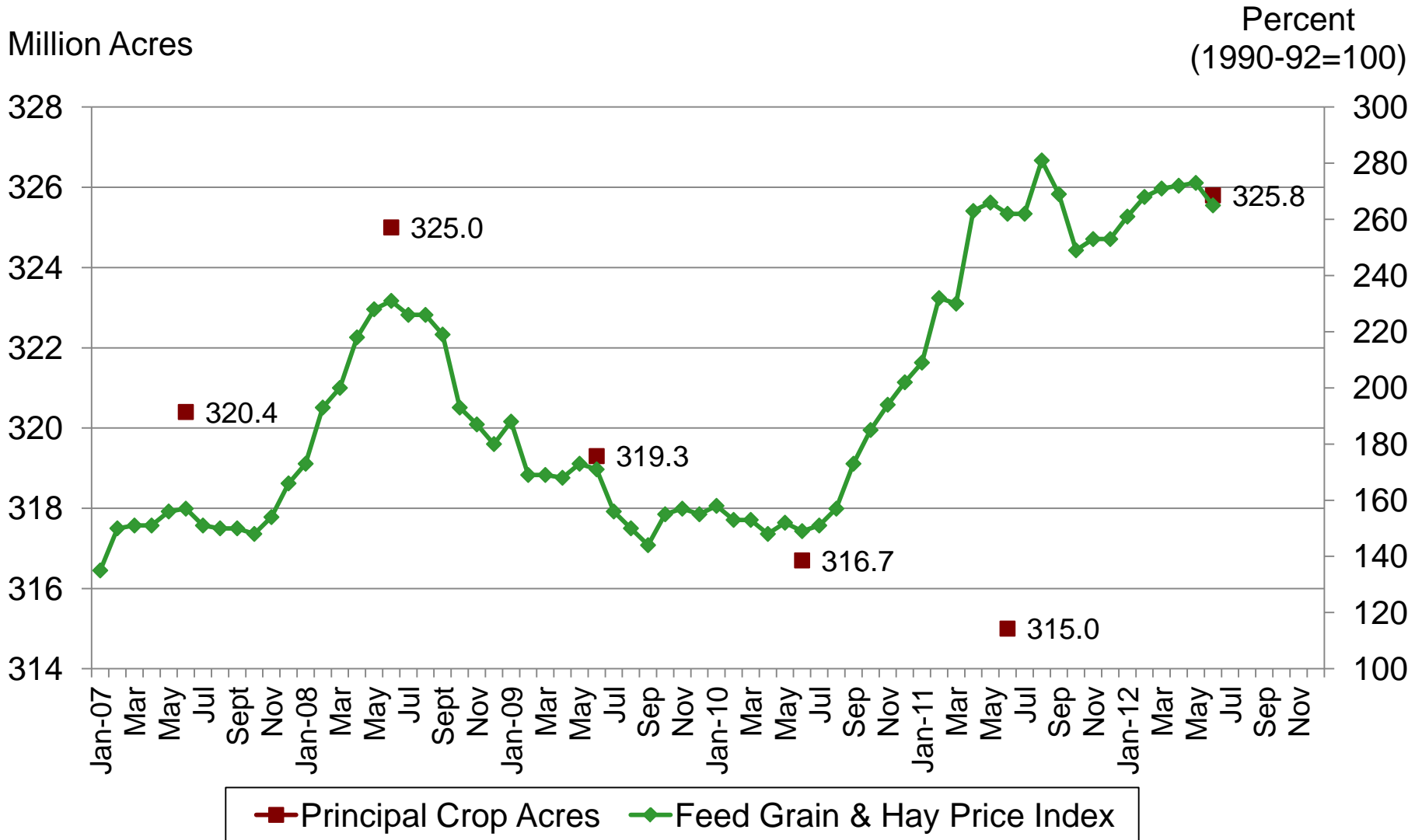


Million acres





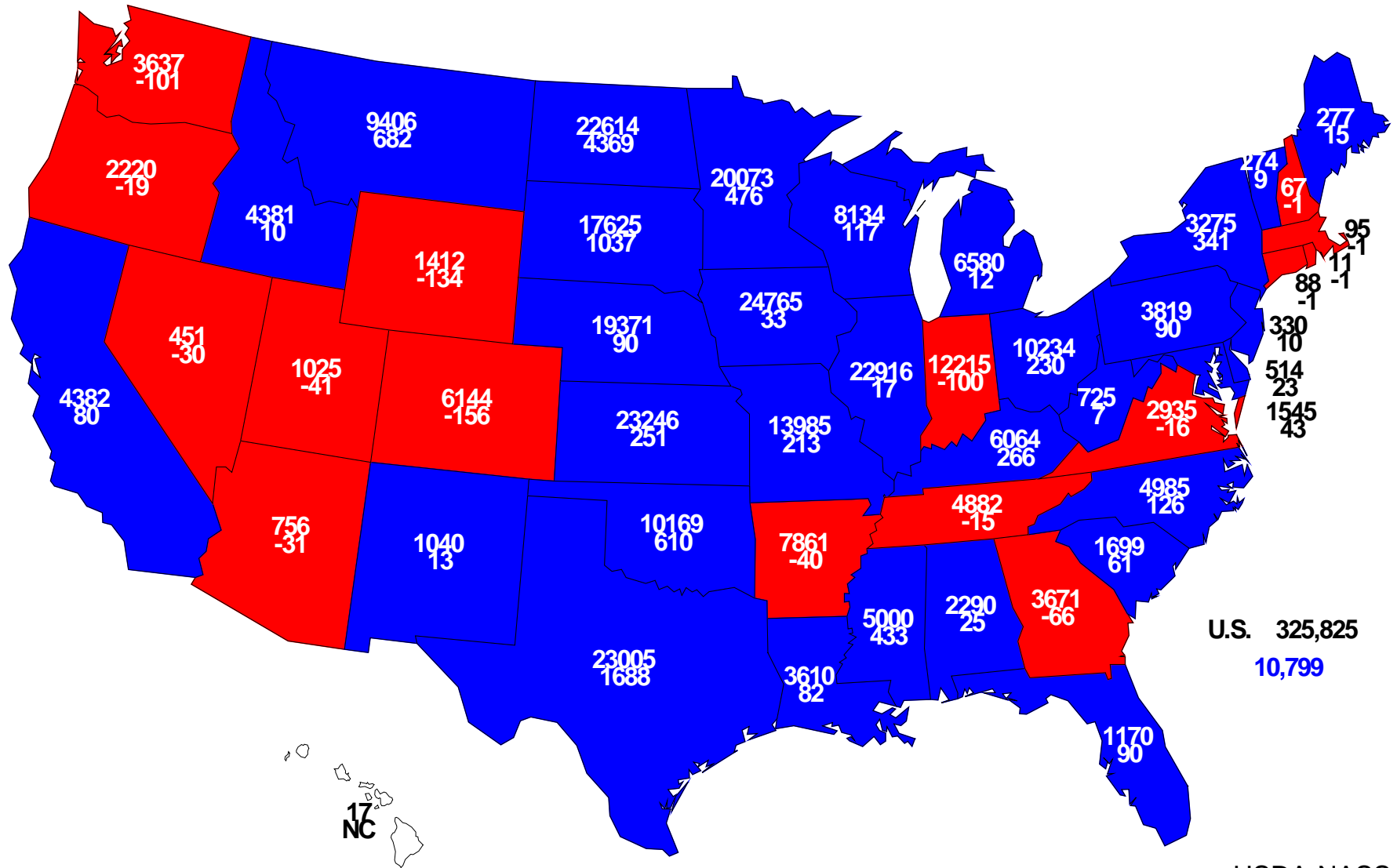
Feed Grain & Hay Price Index and Principal Crop Acres (2007-2012)





2012 Principal Crops Planted

Acres (000) and Change From Previous Year

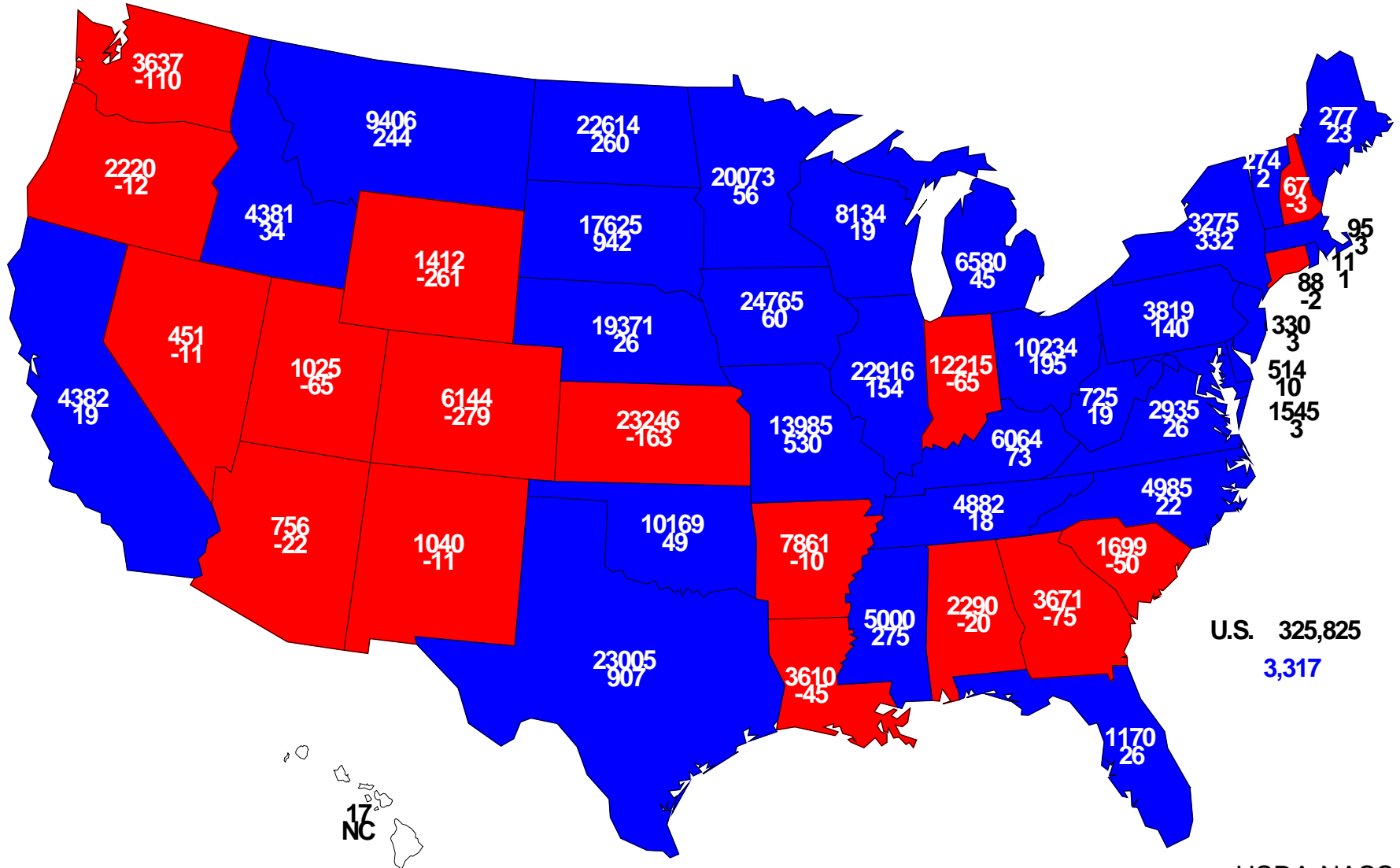


U.S. 325,825
10,799



2012 Principal Crops Planted

Acres (000) and Change From Prospective Plantings





June 2012 Acreage

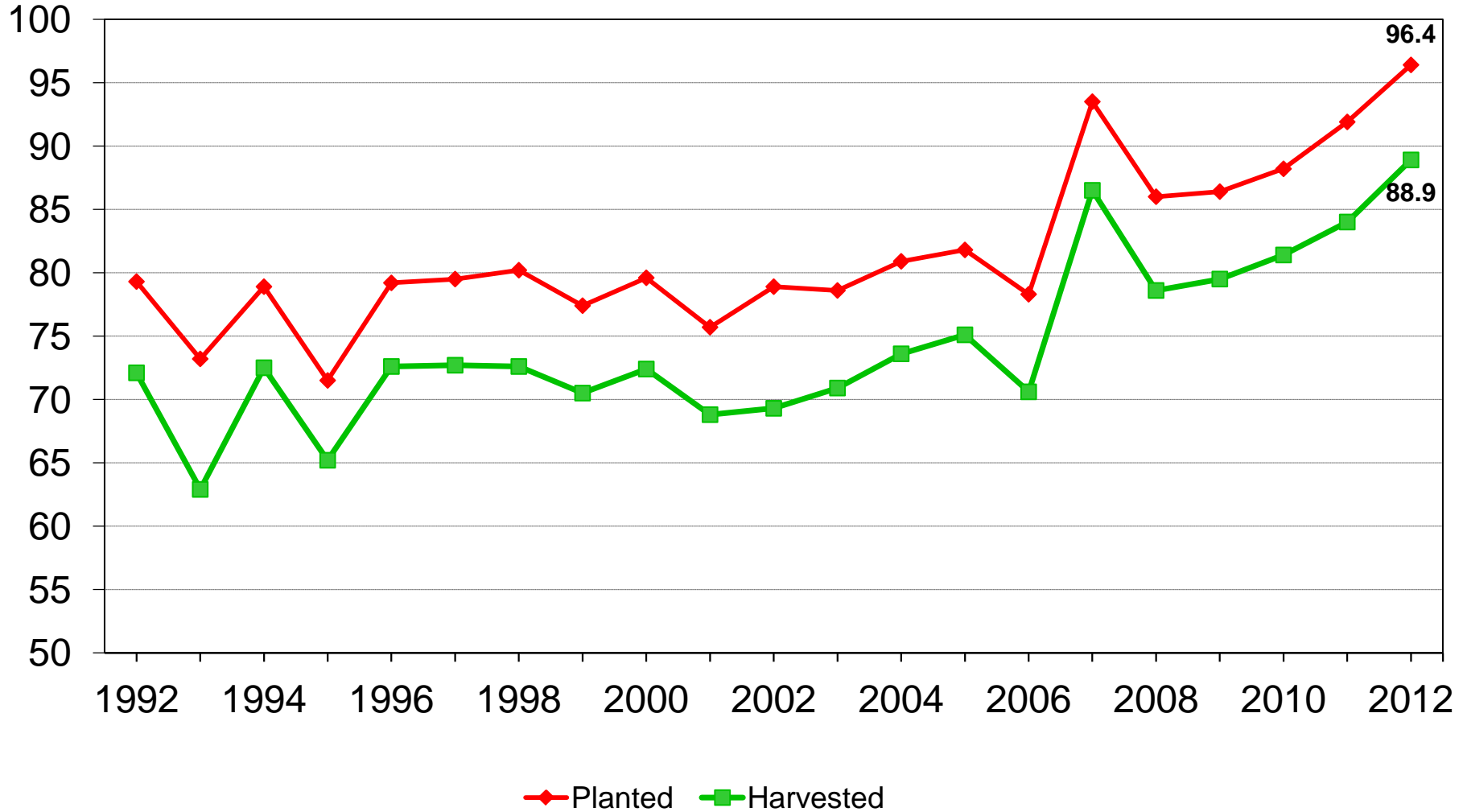
Crop	March 2012	June 2012	Change from March	Change from 2011
	<i>---Million acres---</i>		<i>---Percent---</i>	
Corn				
Planted	95.9	96.4	+ 0.6	+ 4.9
Harvested	---	88.9	---	+ 5.8



U.S. Corn Acres



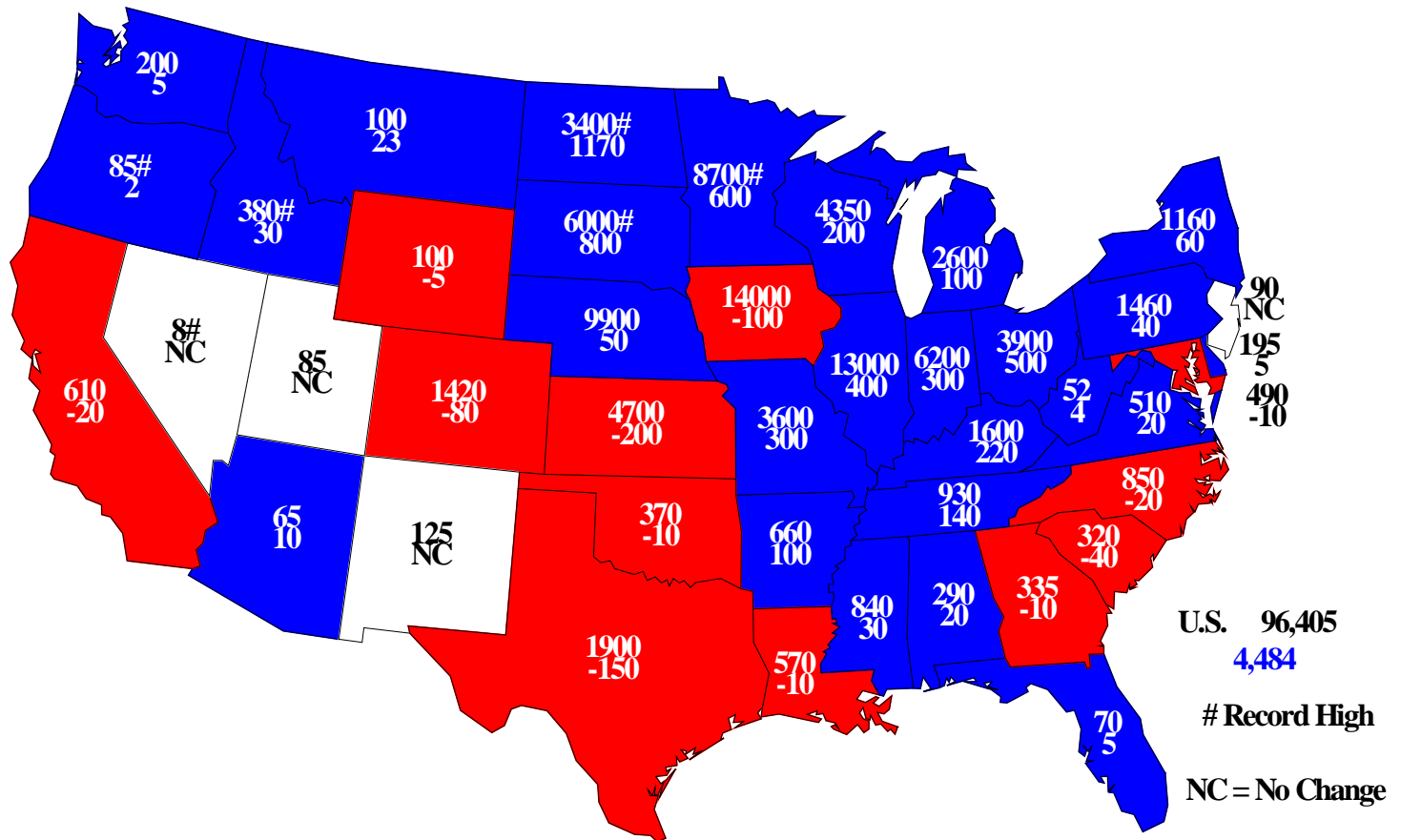
Million acres





2012 Corn Planted

Acres (000) and Change From Previous Year





June 2012 Acreage

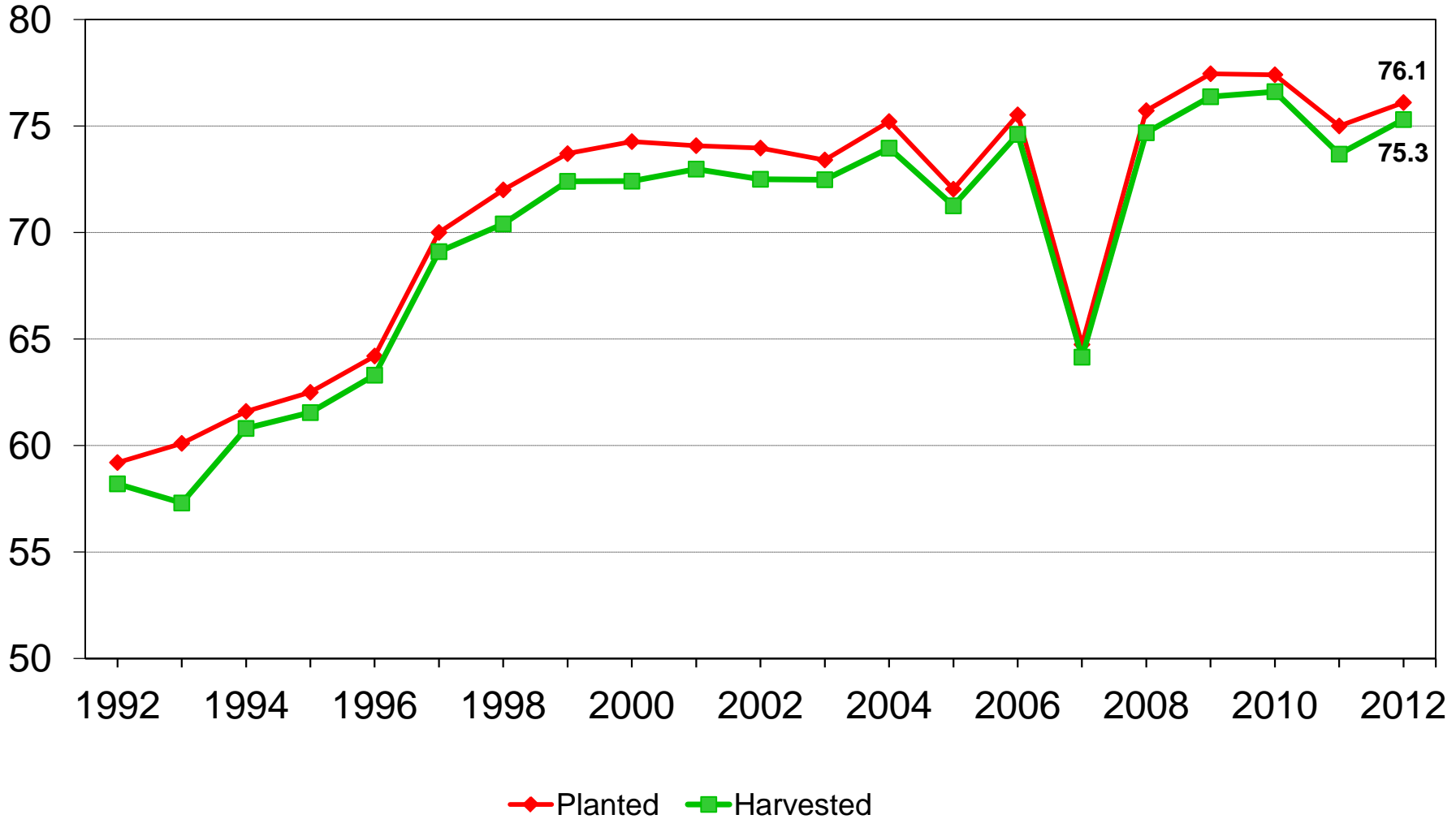
Crop	March 2012	June 2012	Change from March	Change from 2011
	<i>---Million acres---</i>		<i>---Percent---</i>	
Soybeans				
Planted	73.9	76.1	+ 2.9	+ 1.5
Harvested	---	75.3	---	+ 2.3



U.S. Soybean Acres



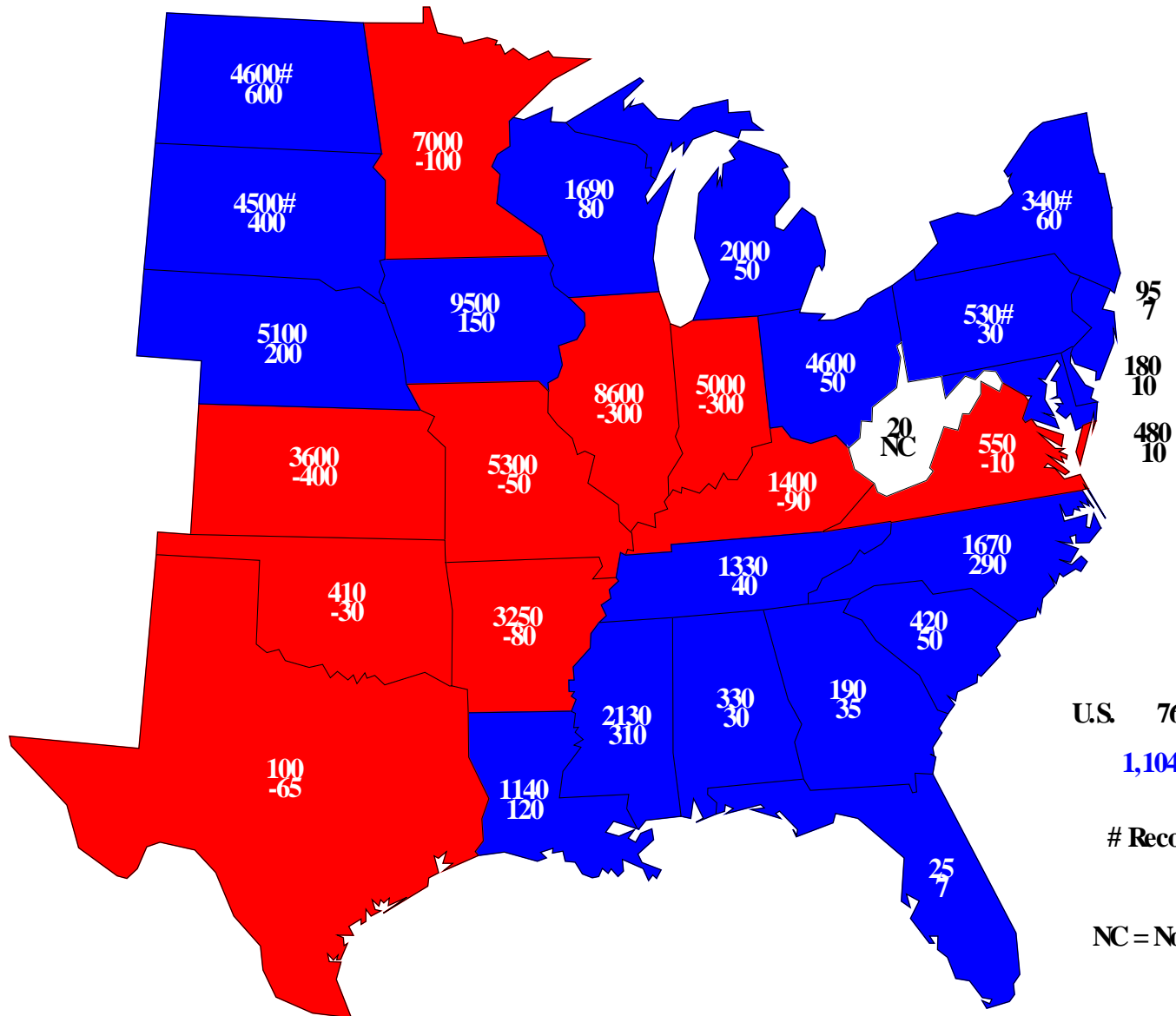
Million acres





2012 Soybeans Planted

Acres (000) and Change From Previous Year



95
7
180
10
480
10

U.S. 76,080

1,104

Record High

NC = No Change

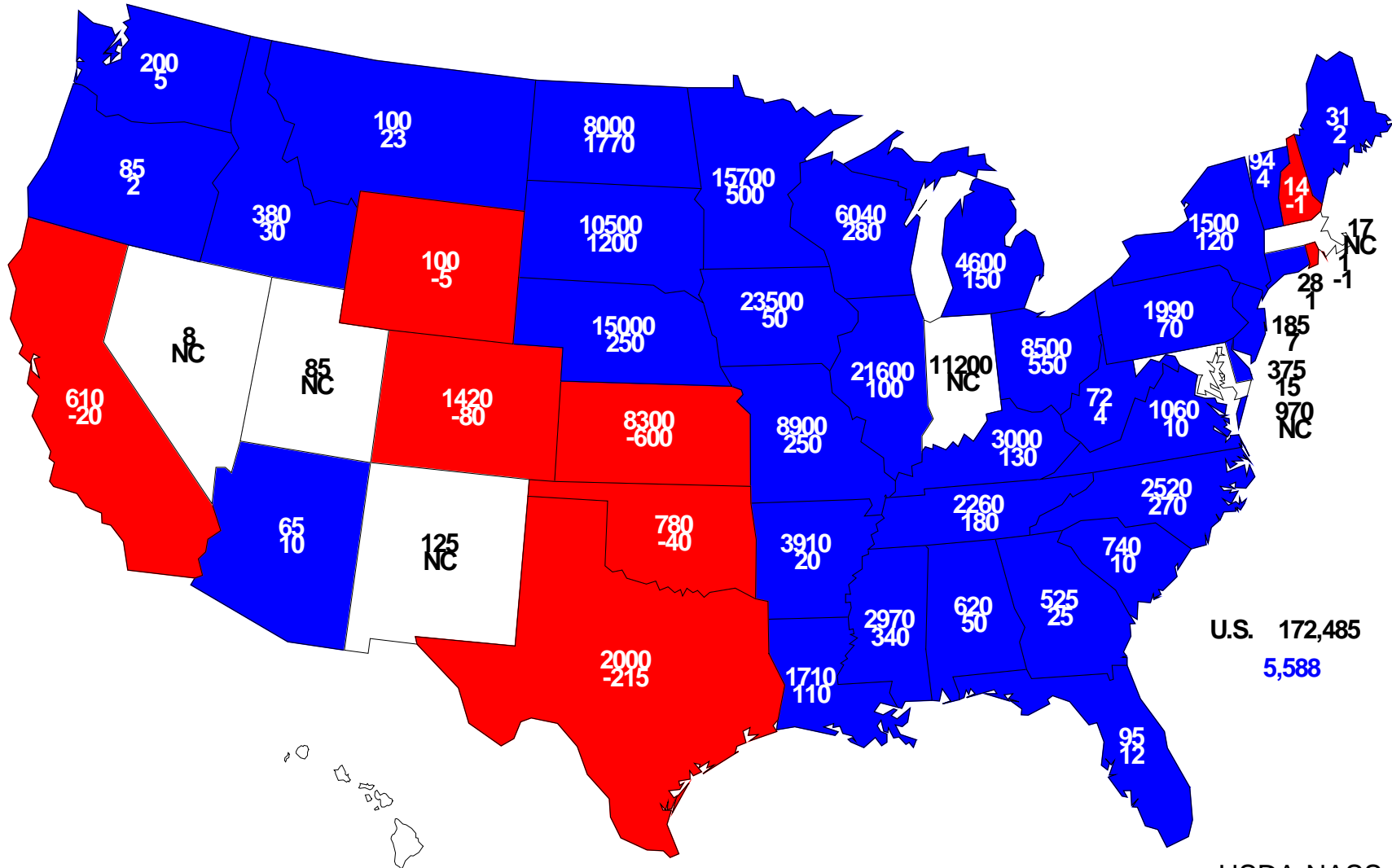
USDA-NASS

6-29-12



2012 Combined Corn & Soybeans Planted

Acres (000) and Change From Previous Year



U.S. 172,485
5,588

USDA-NASS
6-29-12



June 2012 Acreage

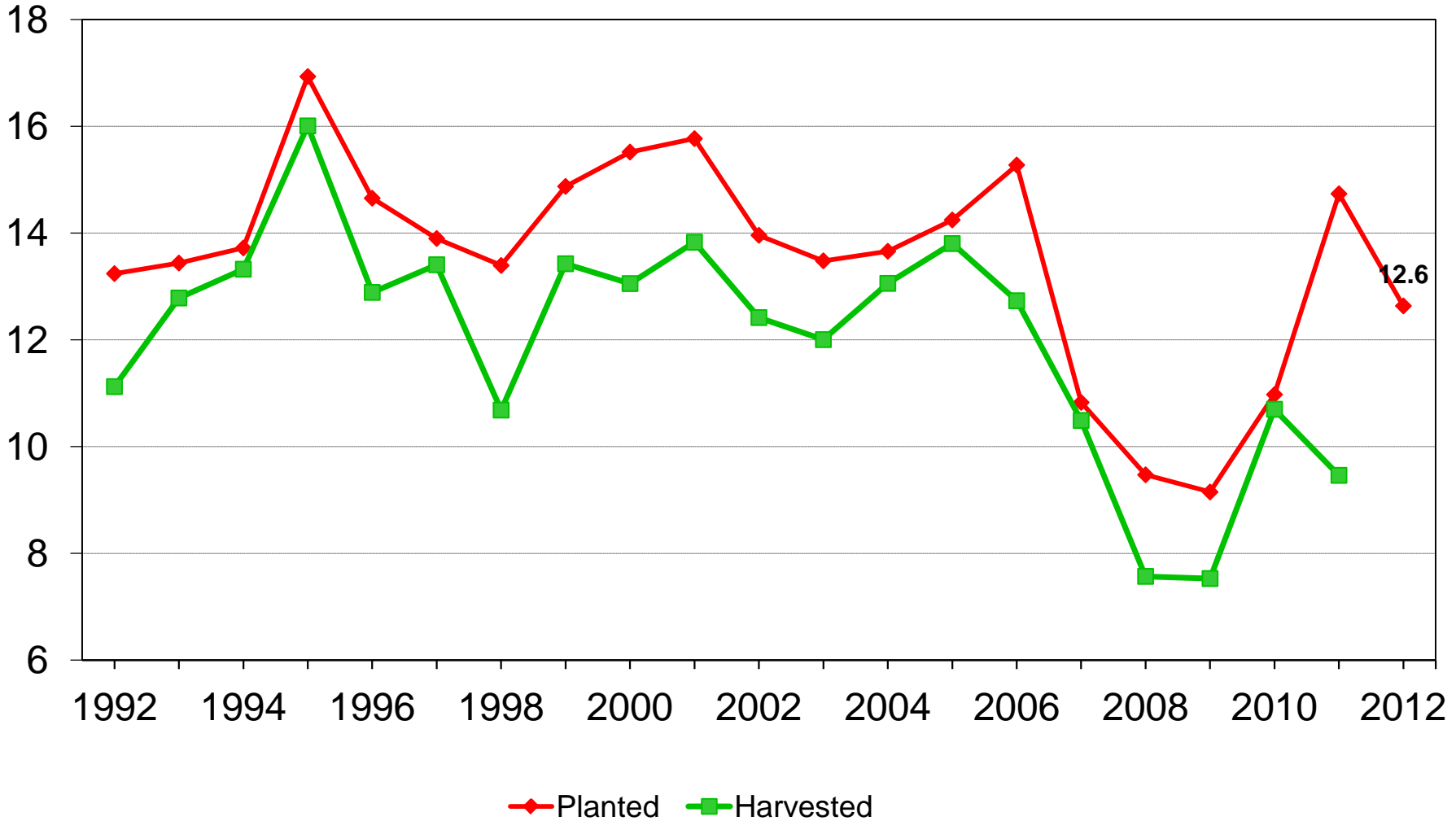
Crop	March 2012	June 2012	Change from March	Change from 2011
	<i>---Million acres---</i>		<i>---Percent---</i>	
Upland Cotton Planted	12.9	12.4	- 3.8	- 14.1
American Pima Planted	0.270	0.235	- 13.0	- 23.6
All Cotton Planted	13.2	12.6	- 4.0	- 14.3

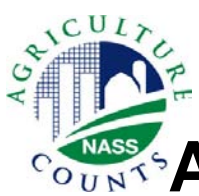


U.S. All Cotton Acres



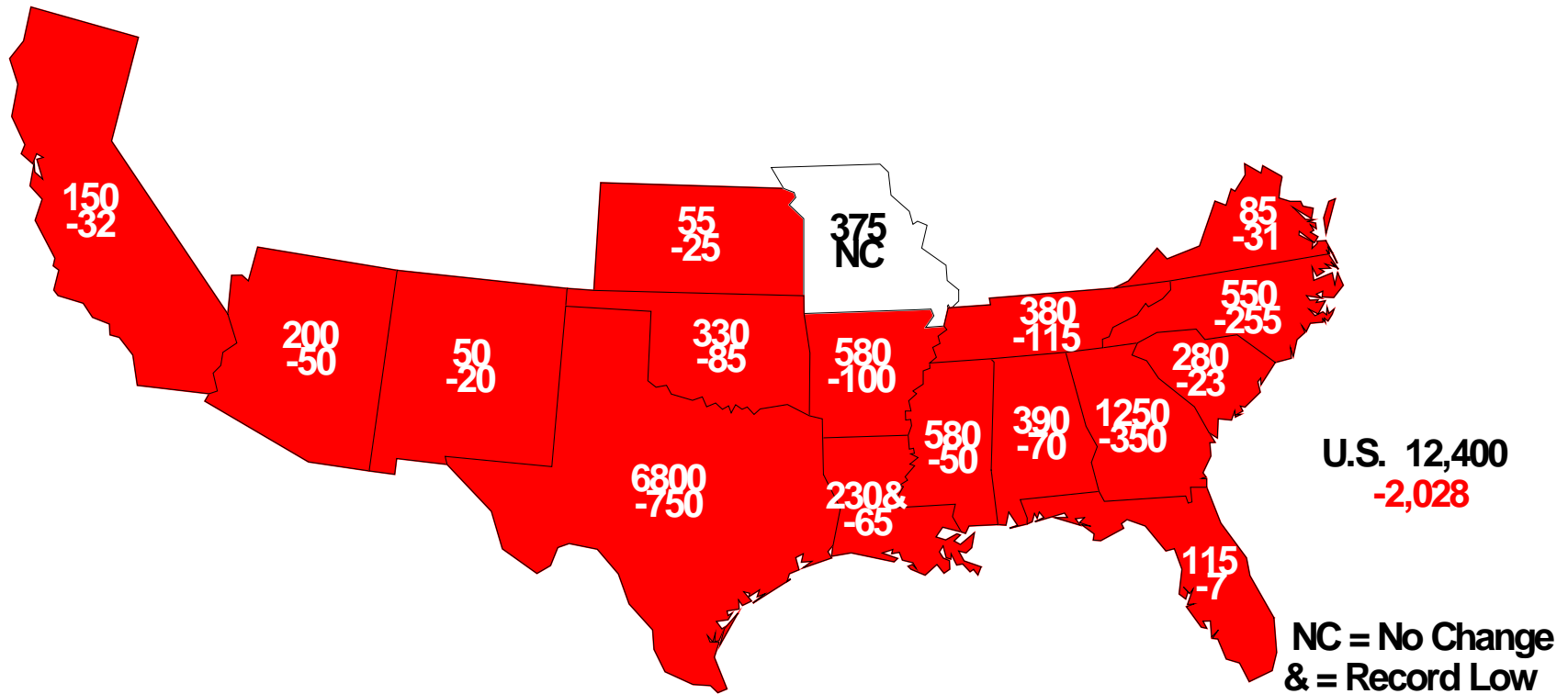
Million acres





2012 Upland Cotton Planted

Acres (000) and Change From Previous Year





June 2012 Acreage

Crop	March 2012	June 2012	Change from March	Change from 2011
	<i>---Million acres---</i>		<i>---Percent---</i>	
Winter Wheat				
Planted	41.7	41.8	+ 0.3	+ 2.9
Harvested	* 35.6	35.0	- 1.6	+ 8.4
Other Spring Wheat				
Planted	12.0	12.0	+ 0.2	- 3.2
Harvested	---	11.7	---	- 3.3
Durum Wheat				
Planted	2.22	2.20	- 0.9	+ 60.9
Harvested	---	2.12	---	+ 61.7
All Wheat				
Planted	55.9	56.0	+ 0.2	+ 3.0
Harvested	---	48.8	---	+ 6.8

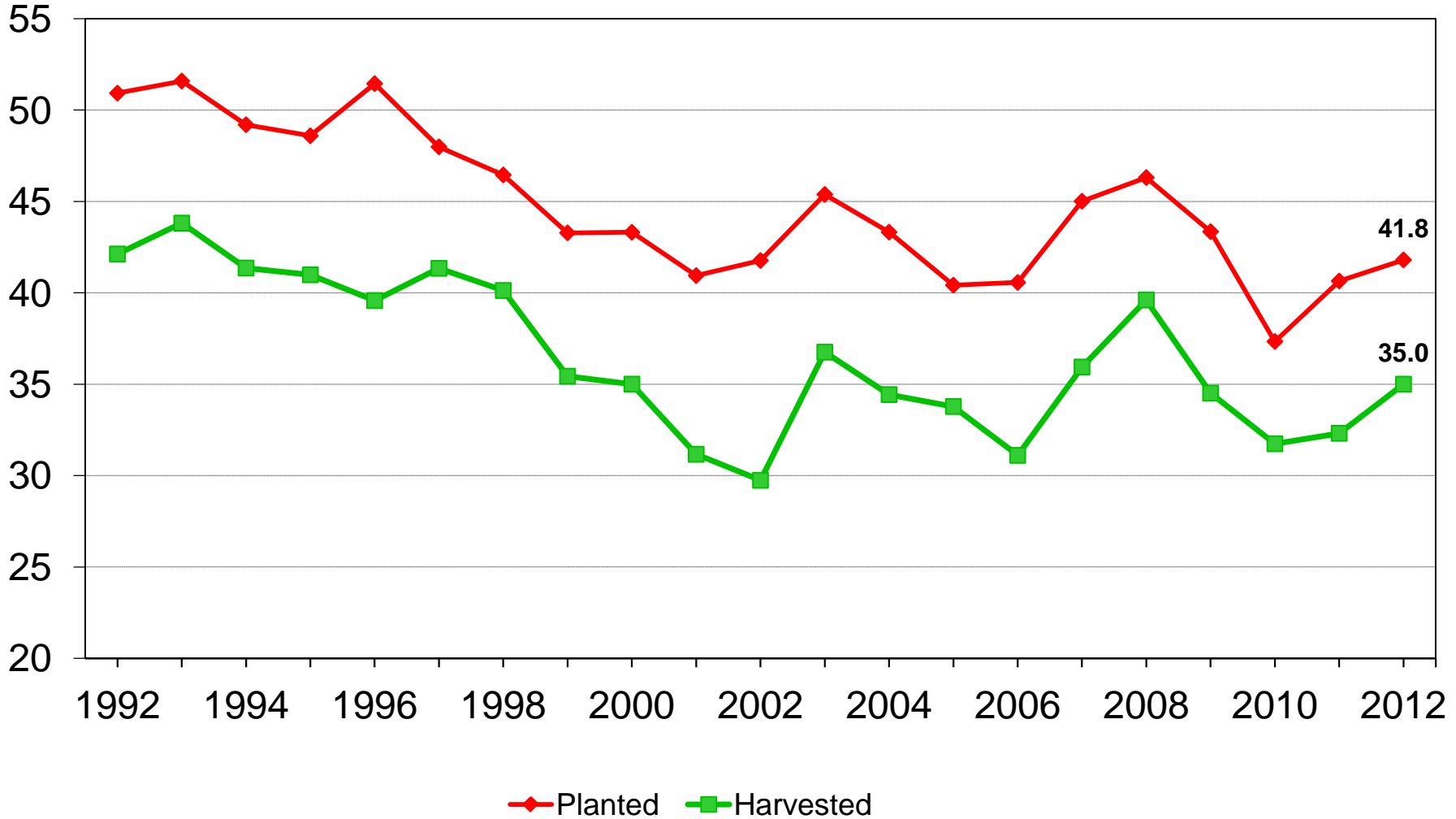
* June 12, 2012



U.S. Winter Wheat Acres



Million acres

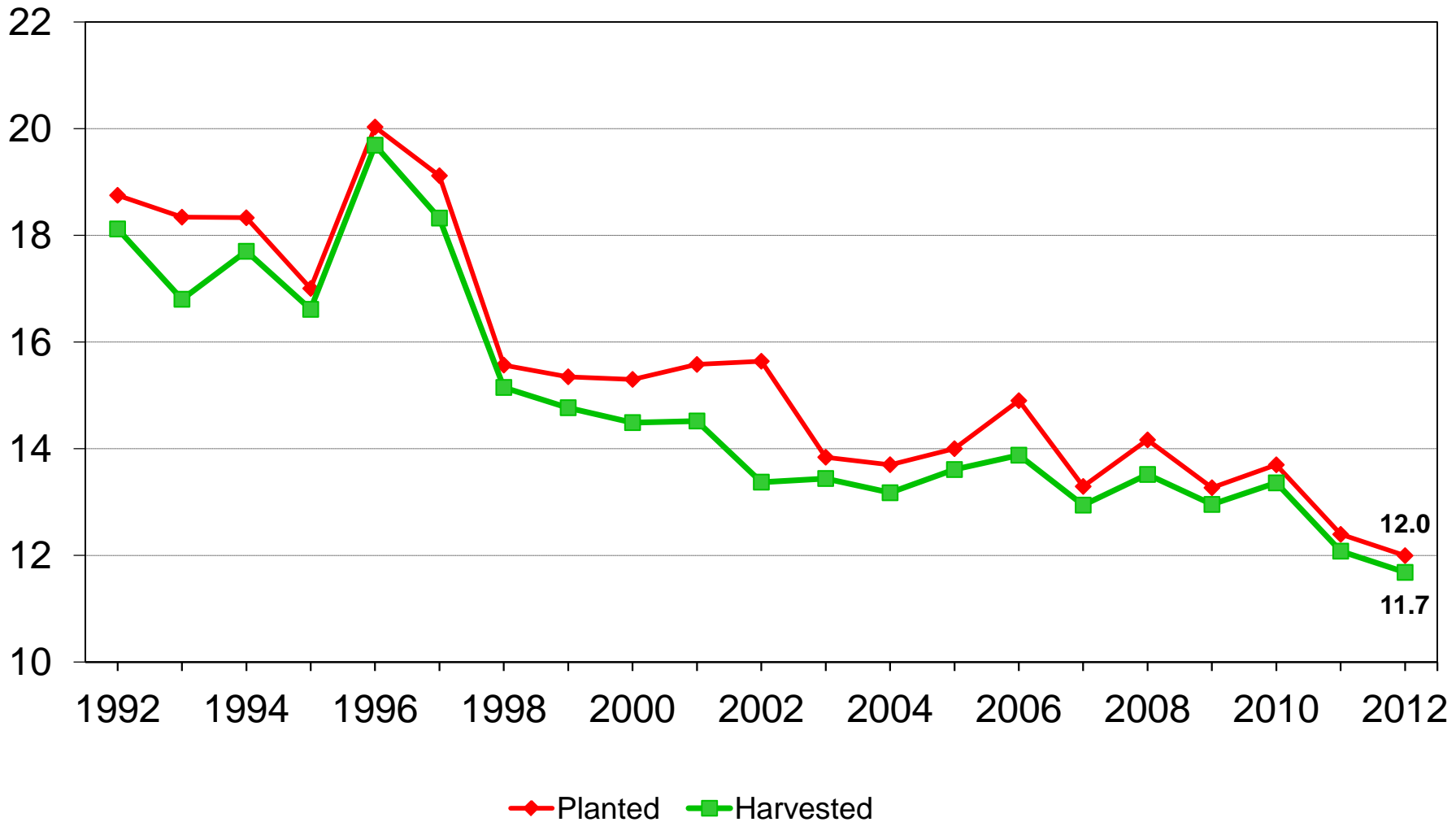




U.S. Other Spring Wheat Acres



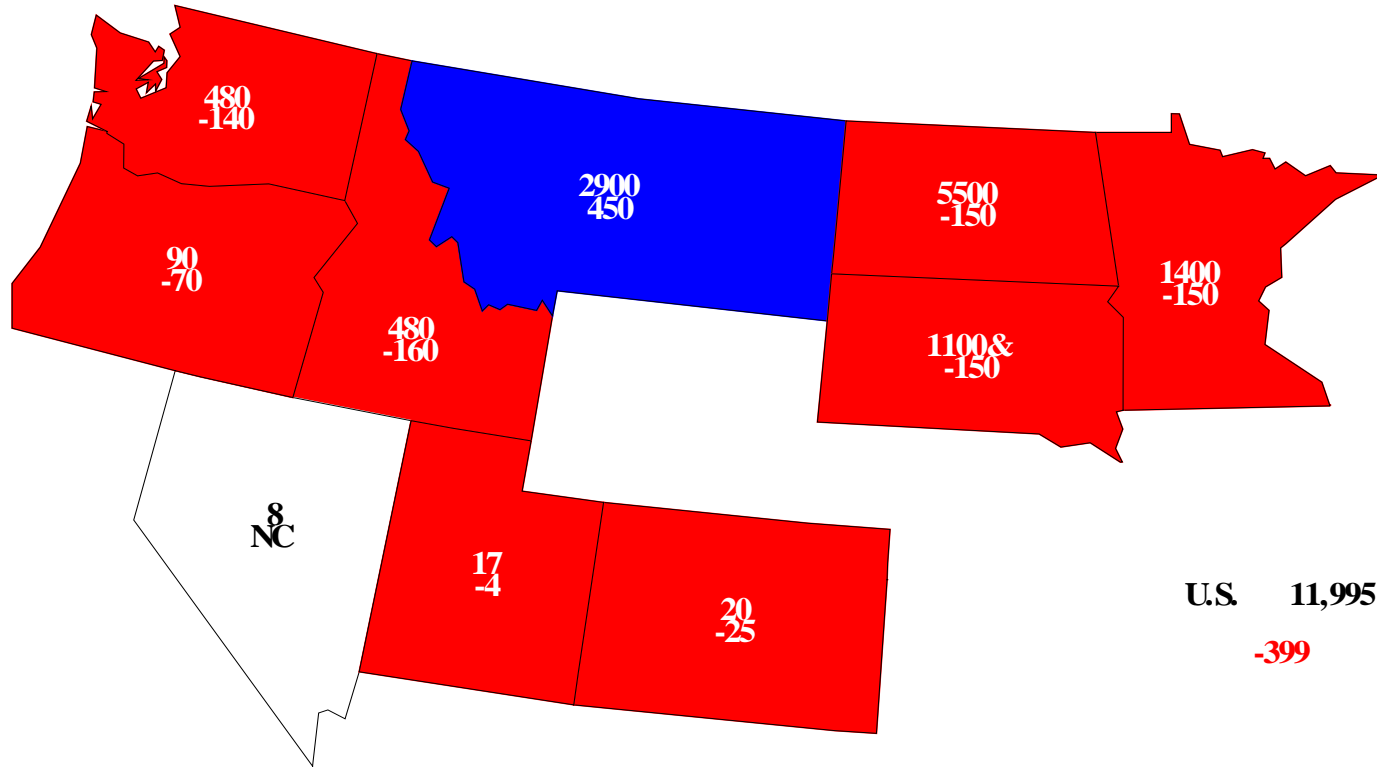
Million acres





Other Spring Wheat Planted, 2012

Acres(000) and Change From Previous Year



U.S. 11,995
-399

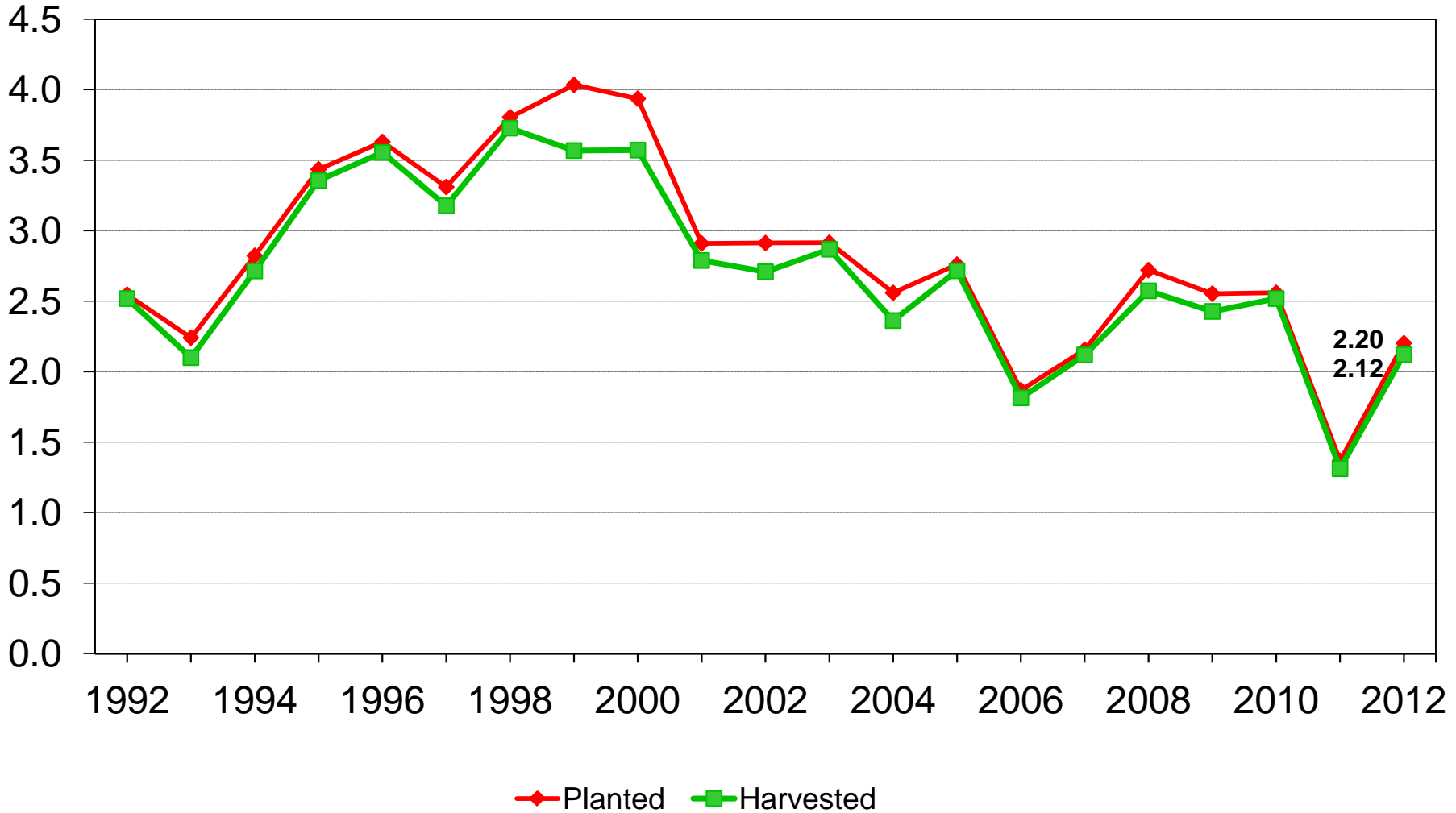
& Record Low
NC = No Change



U.S. Durum Wheat Acres



Million acres





June 2012 Acreage

Crop	Planted Area		Change from March	Change from 2011
	March 2012	June 2012		
	<i>---Million acres---</i>		<i>---Percent---</i>	
Sorghum	5.95	6.21	+ 4.4	+ 13.3
Oats	2.86	2.75	- 4.1	+ 10.0
Barley	3.33	3.68	+ 10.4	+ 43.7
All Hay ^{1/}	57.3	57.7	+ 0.6	+ 3.7
Alfalfa ^{1/}	---	18.8	---	- 2.0
Other ^{1/}	---	38.8	---	+ 6.7

^{1/} For harvest



June 2012 Acreage

Crop	Planted Area		Change from March	Change from 2011
	March 2012	June 2012		
	<i>---Million acres---</i>		<i>---Percent---</i>	
Rice	2.56	2.66	+ 3.9	- 1.0
Peanuts	1.42	1.53	+ 7.3	+ 33.8
Sugarbeets	1.24	1.24	+ 0.2	+ 0.9
Sugarcane ^{1/}	---	0.892	---	+ 2.2
Dry Beans	1.67	1.63	- 2.2	+ 35.4
Potatoes, Summer	---	0.048	---	- 0.2
Sweet Potatoes	0.133	0.131	- 1.5	- 1.6
Tobacco ^{1/}	0.318	0.324	+ 1.8	- 0.4

^{1/} For harvest



June 2012 Acreage

Crop	Planted Area		Change from March	Change from 2011
	March 2012	June 2012		
	<i>---Million acres---</i>		<i>---Percent---</i>	
Sunflower	1.81	1.80	- 0.2	+ 16.9
Canola	1.56	1.63	+ 4.8	+ 52.3
Flaxseed	0.289	0.285	- 1.4	+ 60.1
Safflower	---	0.148	---	+ 12.9
Mustard Seed	---	0.056	---	+ 139.2
Rye	---	1.25	---	- 1.2
Proso Millet	---	0.315	---	- 14.9



Biotech Varieties

% of All Planted Acres

Crop	Herbicide Resistant Only		Insect Resistant (Bt) Only	
	2011	2012	2011	2012
Corn	23	21	16	15
Soybeans	94	93	---	---
Upland Cotton	15	17	17	14

Crop	Stacked Gene		All Biotech Varieties	
	2011	2012	2011	2012
Corn	49	52	88	88
Soybeans	---	---	94	93
Upland Cotton	58	63	90	94

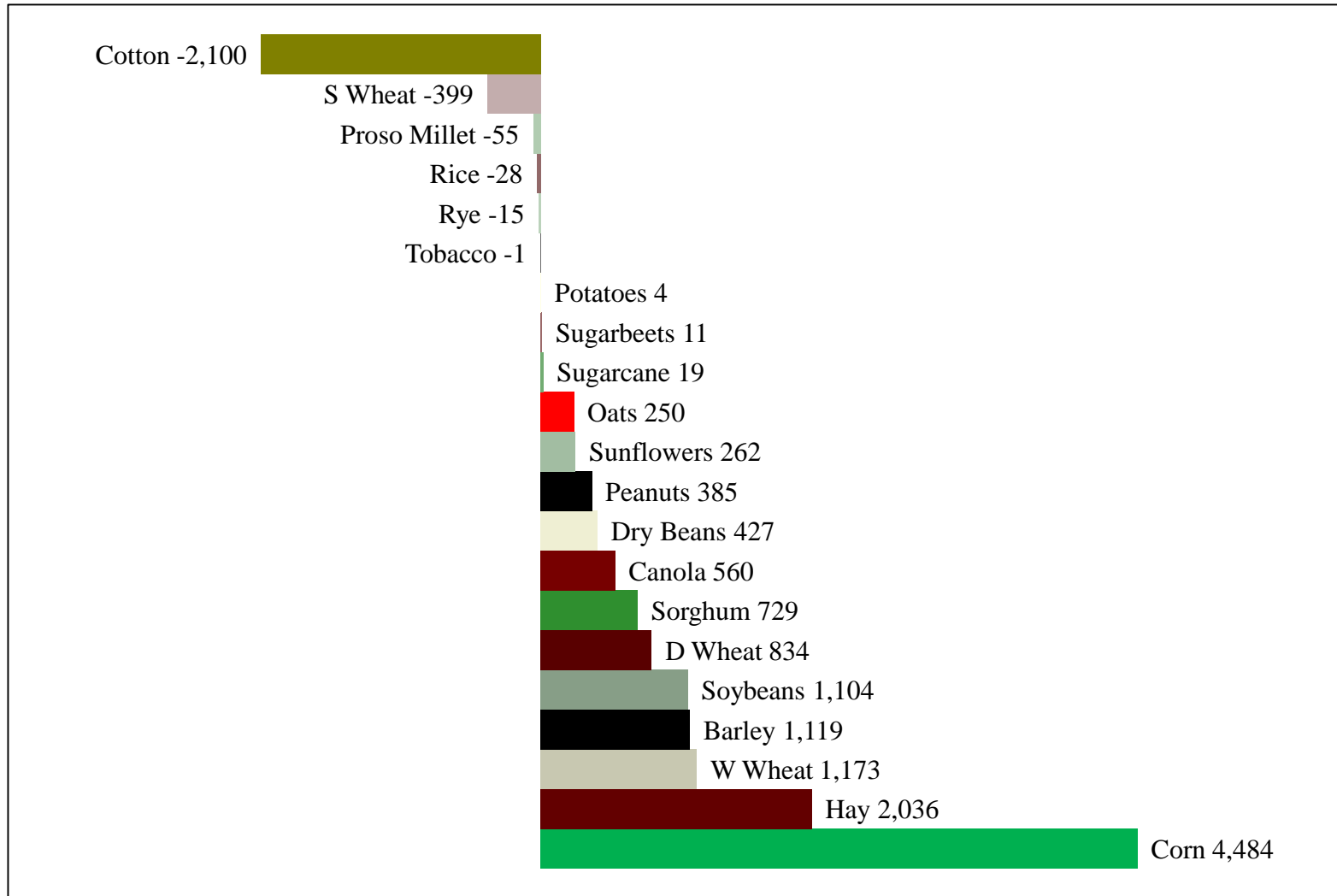


Percent of Acres Remaining To Be Planted

Crop	2010	2011	2012
		<i>---Percent---</i>	
Corn	1.4	4.3	0.7
Soybeans	13.4	25.9	6.5
Other Spring Wheat	1.7	17.4	0.0
Durum Wheat	8.5	30.7	< 0.1



Change in Planted Acres (000) 2012 Compared With 2011

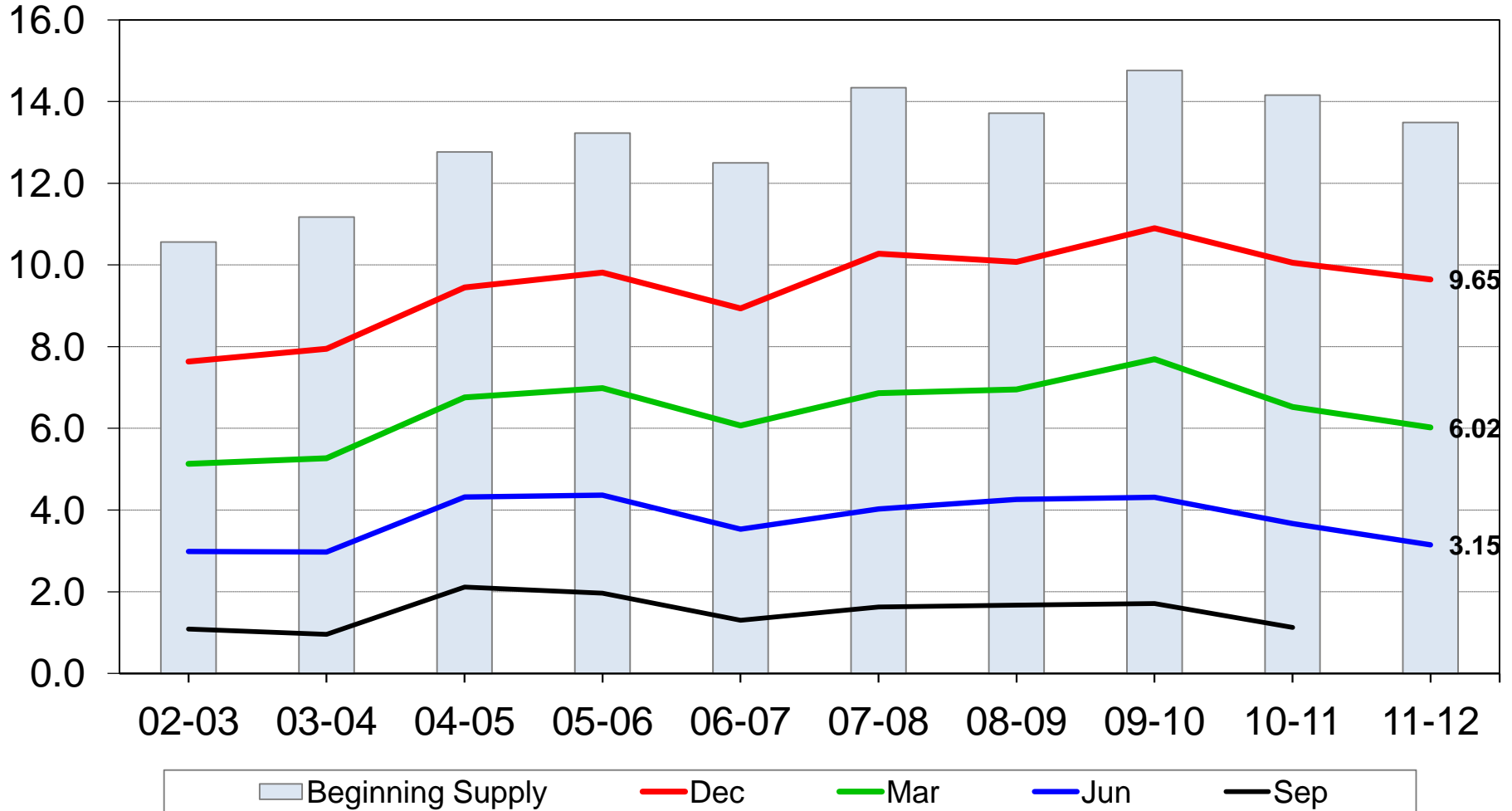




U.S. Corn Stocks



Billion bushels

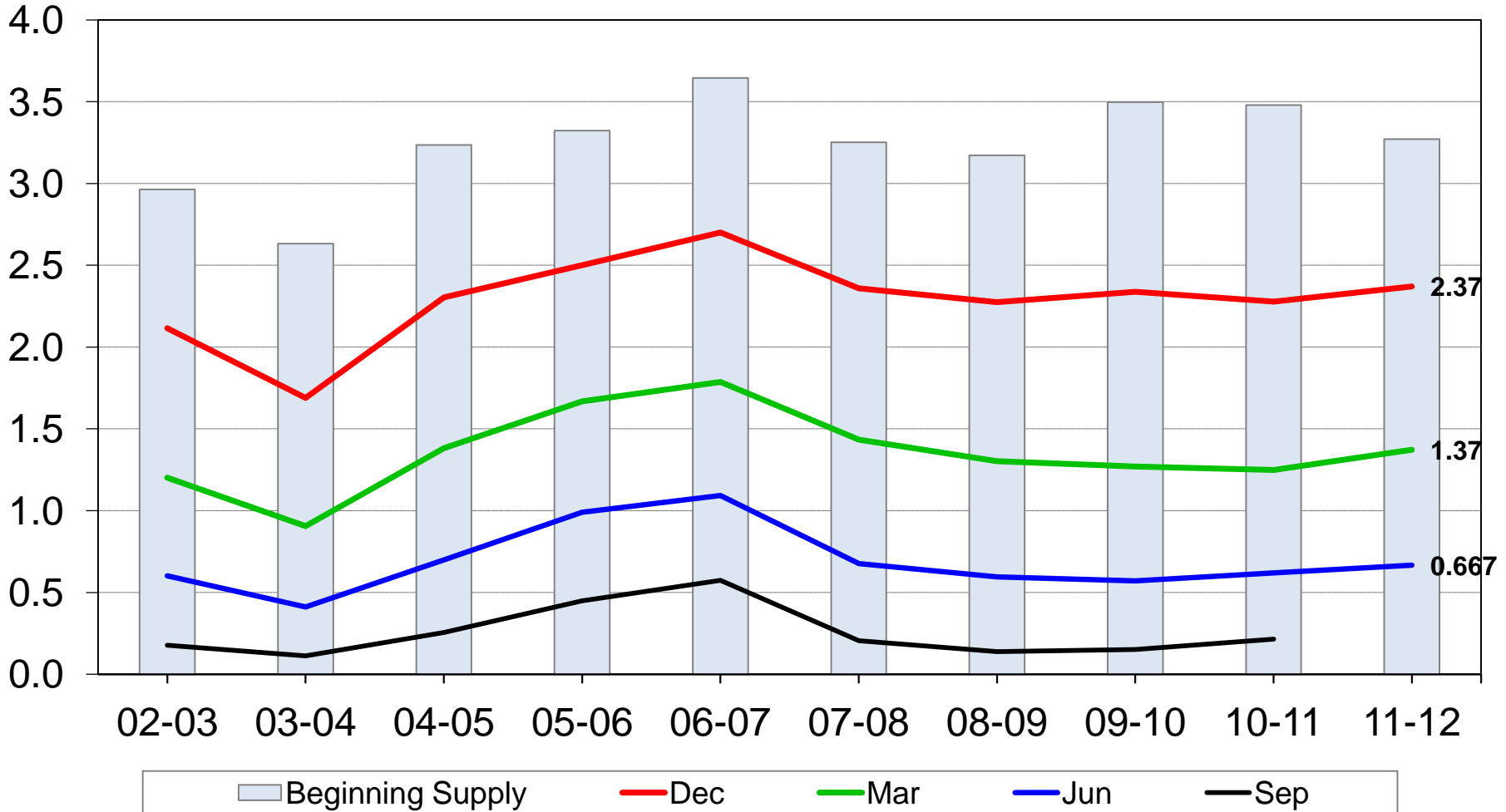




U.S. Soybean Stocks



Billion bushels

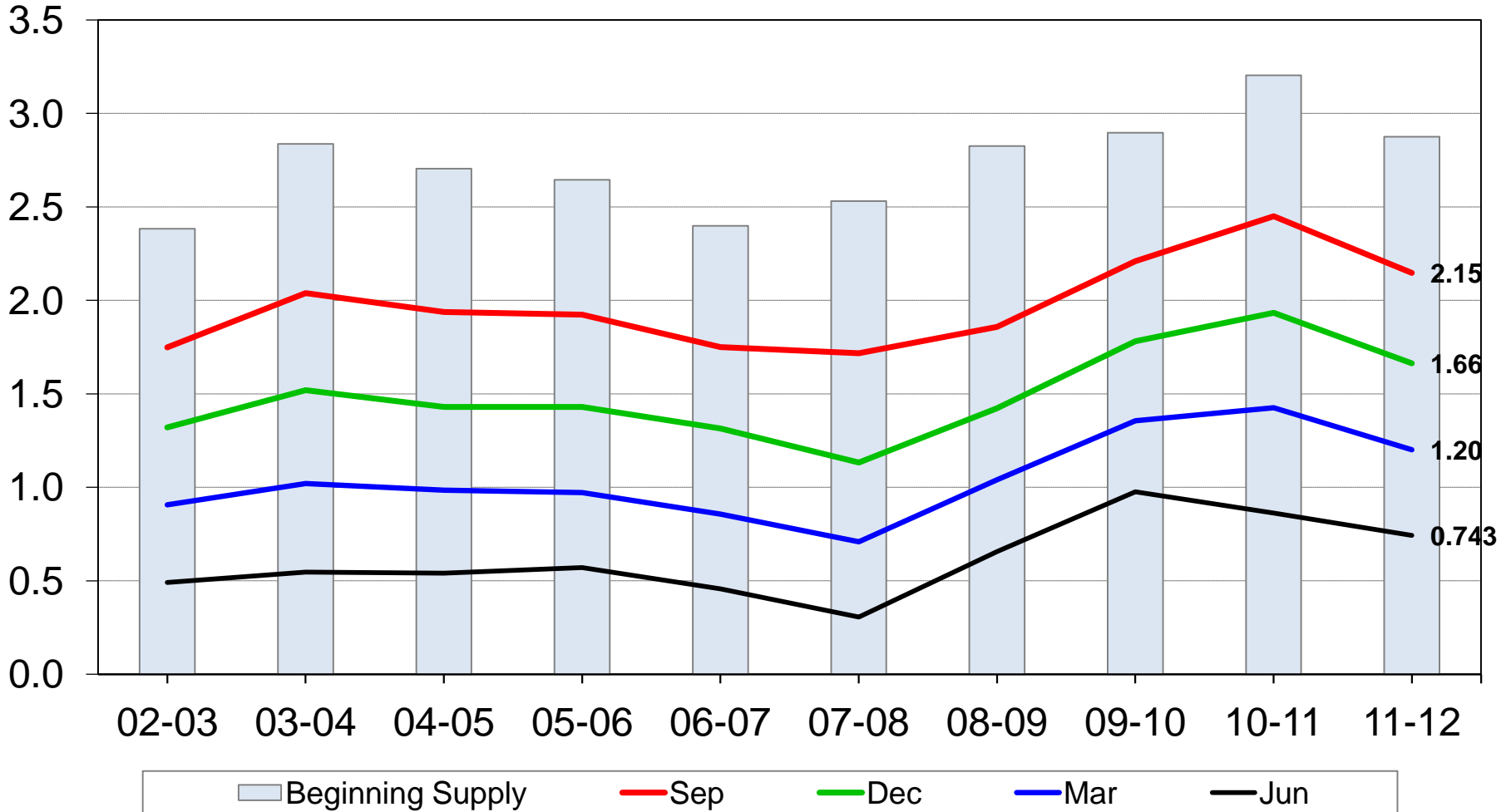




U.S. All Wheat Stocks



Billion bushels

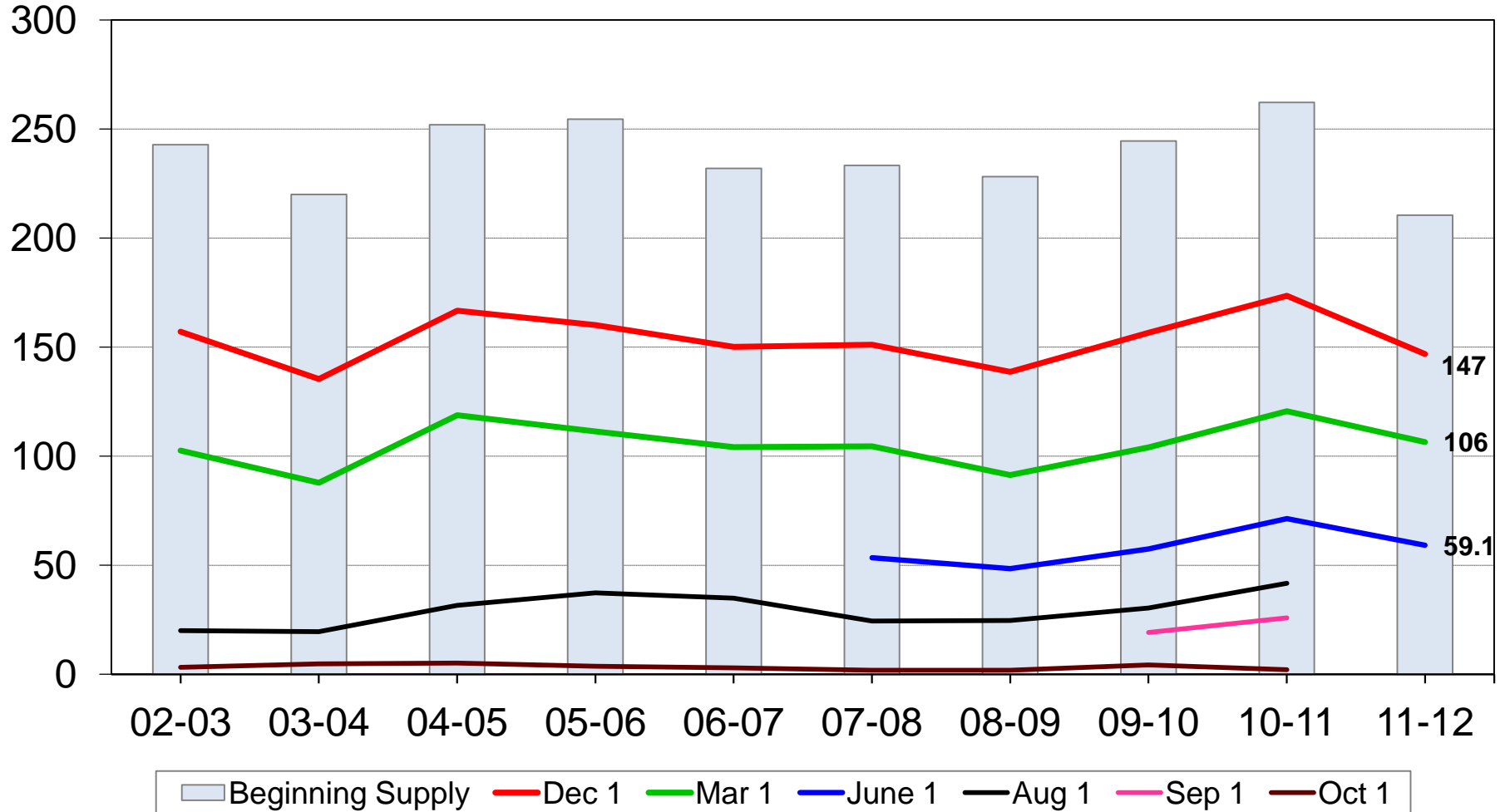




U.S. Rough Rice Stocks



Million cwt





United States Department of Agriculture
National Agricultural Statistics Service

Upcoming Reports

June 29	Quarterly Hogs and Pigs
July 6	Noncitrus Fruits and Nuts Annual
July 11	Crop Production
July 20	Cattle
July 31	Agricultural Prices
August 10	Crop Production



United States Department of Agriculture
National Agricultural Statistics Service



All Reports Available At

www.nass.usda.gov

For Questions

202-720-2127

800-727-9540

nass@nass.usda.gov